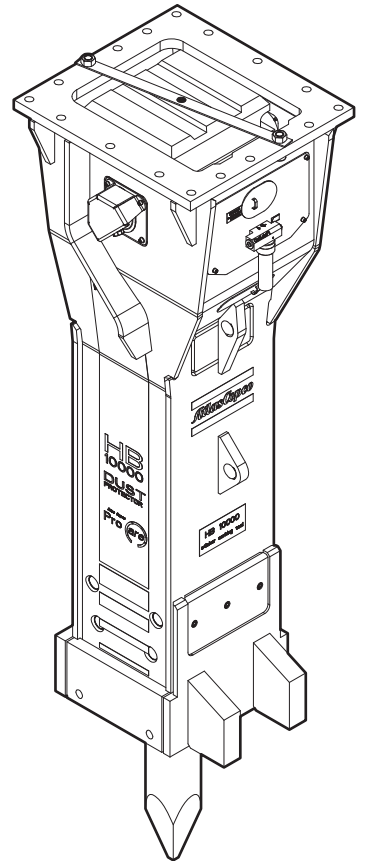


## Spare parts list Hydraulic breakers

	Valid from serial number
HB 10000 DP	20 and also serial number 11





# Contents

General note.....	5
Spare parts list.....	6
Hydraulic breaker HB 10000 DustProtector.....	6
Percussion unit part 1: cylinder cover.....	8
Percussion unit part 2: cylinder.....	12
Percussion unit part 3: lower breaker part.....	14
Connecting kit for ContiLube® II.....	16
StartSelect - AutoStart or AutoStop.....	18
Optional parts.....	20
Tightening torques.....	21
Working tools.....	22
HB 10000 DustProtector.....	22
Accessories.....	23
Hydraulic hoses.....	23
Optional equipment.....	23
Kits.....	24
Label kit HB 10000 DustProtector.....	24
Seal kit.....	25
Seal kit for swivel joint (ContiLube® II).....	25
Plastic parts kit.....	26
Tensioning bolt kit.....	26
DustProtector kit.....	26
Noise protection kit.....	26
Lower breaker part kit DustProtector (bronze).....	27
Lower breaker part kit DustProtector (steel).....	27
Expansion bolt kit.....	27
Accumulator repair kit.....	28
Dimensions.....	29
Dimensions HB 10000 DustProtector.....	29



## General note

This spare parts list applies to the following:

Part number	Description
3363 1003 91	Hydraulic breaker HB 10000 DustProtector

Use only authorized parts. Any damage or malfunction caused by the use of unauthorized parts is not covered by Warranty or Product Liability. Any unauthorized use or copying of the contents or any part thereof is prohibited. This applies in particular to trademarks, model denominations, part numbers, and drawings.

### Instructions for use

This spare parts list contains no safety regulations and is merely intended to assist in the ordering of spare parts.

For information on operating, servicing, or repairing, the relevant Safety and operating instructions must be consulted at all costs.

Please observe the safety instructions listed in the relevant Safety and operating instructions!

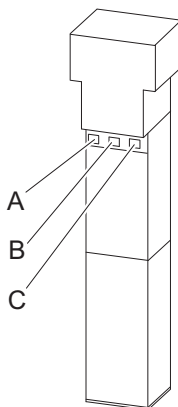
### Instructions of ordering

It is essential to indicate the serial number of the hydraulic attachment when ordering spare parts!

Please note the full identification number of your hydraulic attachment. This code can be found on the cylinder.

Determine the quantity of individual parts which are required and need to be ordered. The order must indicate the following details:

- full identification code of the hydraulic attachment
- required quantity
- part number
- description

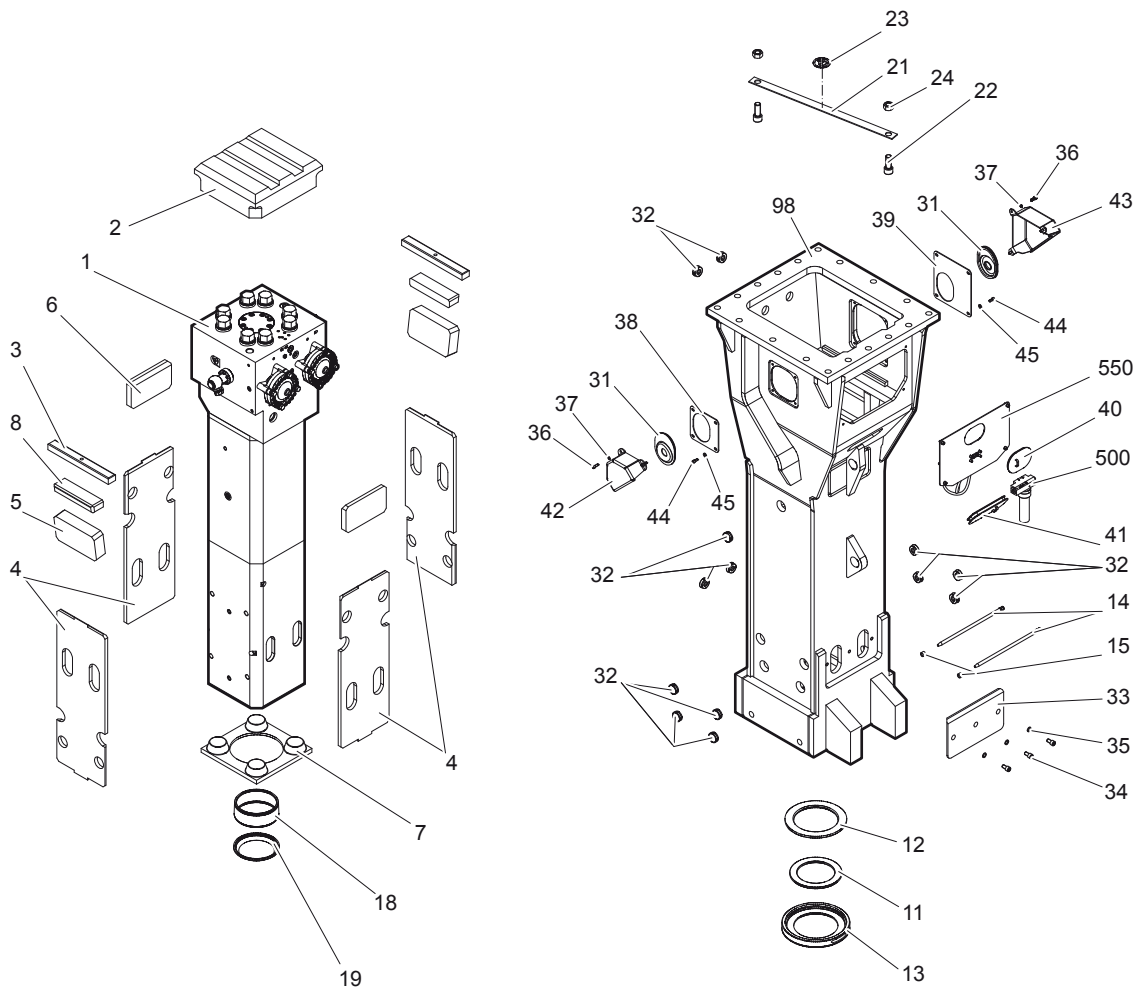


- A. Cylinder number
- B. Type
- C. Serial number

# Spare parts list

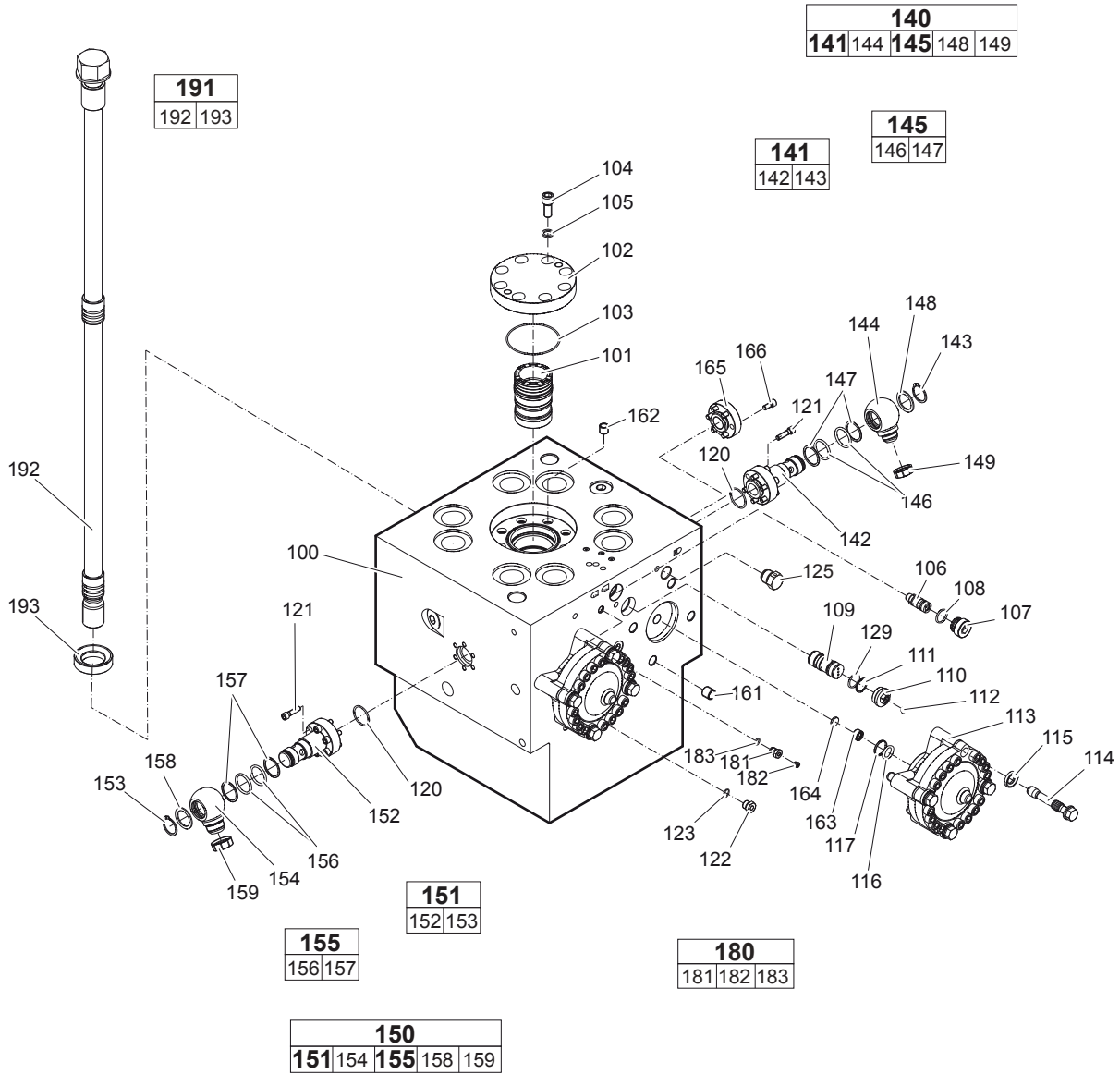
## Hydraulic breaker HB 10000 DustProtector

20			
21	22	23	24



No.	Description	Remark	Quantity	Part number
1	Percussion unit	see separate chapter <b>Note:</b> When ordering a percussion unit for DustProtector version it is imperative to order additionally the base for wiper (no. 18) and the wiper (no. 19).	1	3363 1000 01
2	Elastic pad		1	3363 0929 57
3	Shock absorber		2	3363 0938 53
4	Guide plate		4	3363 0938 55
5	Guide plate		2	3362 2626 67
6	Guide plate		2	3362 2626 65
7	Guide plate		1	3363 1007 13
8	Plate		2	3363 1007 77
11	Floating ring	tribolid steel see chapter <i>Optional parts</i>	1	3363 1007 01
12	Counter ring		1	3363 1007 03
13	Guide ring		1	3363 1007 05
14	Bolt		2	3363 1007 07
15	Locking bush		2	3361 8543 63
18	Base for wiper		1	3363 1007 09
19	Wiper		1	3363 1007 11
<b>20(21-24)</b>	<b>Transport safety device complete</b>		1	3363 0948 25
21	Transport safety device		1	-
22	Allen screw		2	3360 1141 51
23	Label transport safety device		1	3363 0918 72
24	Nut		2	3360 1032 55
31	Cover		2	3363 0311 81
32	Plug		13	3363 0860 17
33	Plate		1	3363 0938 27
34	Allen screw		3	3363 0830 07
35	Pair of lock washers		3	3361 8507 48
36	Allen screw		6	3360 1037 51
37	Pair of lock washers		6	3361 8505 96
38	Plate		1	3363 0988 30
39	Plate		1	3363 1032 87
40	Cover		1	3363 0926 97
41	Cover		1	3363 0680 99
42	Swivel joint cover		1	3363 1114 67
43	Swivel joint cover		1	3363 1114 72
44	Allen screw		2	3360 1037 50
45	Pair of lock washers		2	3363 1112 96
98	Breaker box		1	3363 1049 01
500	ContiLube® II	see separate <i>Safety and operating instructions</i>	1	3363 0671 23
550	Connecting kit for ContiLube® II	see separate chapter	1	3363 0940 58

# Percussion unit part 1: cylinder cover

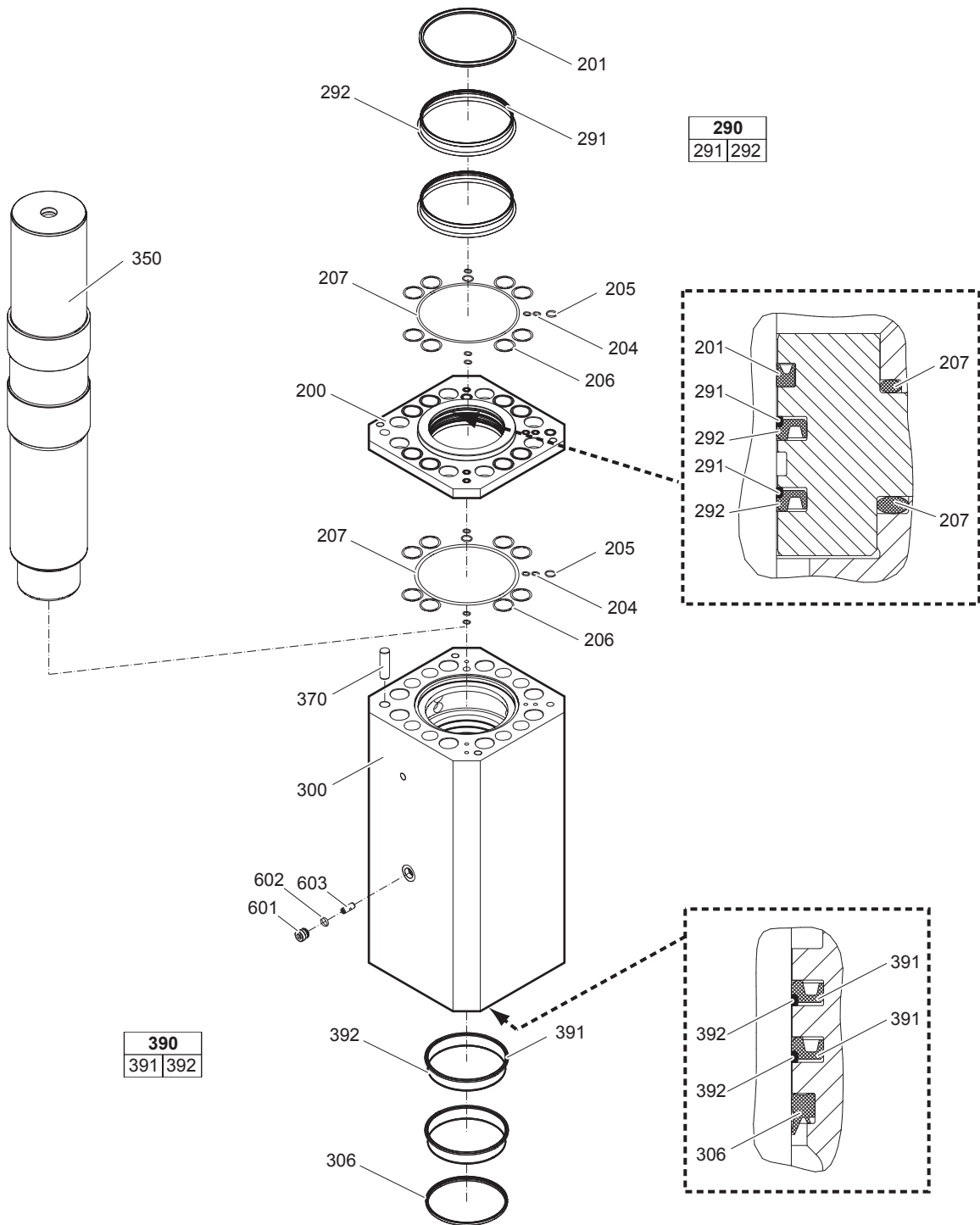


No.	Description	Remark	Quantity	Part number
100	Cylinder cover	with no. 161 - 166	1	3363 0983 12
101	Main control valve		1	3363 1000 15
102	Cover		1	3363 1000 17
103	O-ring		1	3360 4782 91
104	Allen screw		8	3360 1037 76
105	Pair of lock washers		8	3361 8507 48
106	Frequency switching valve	AutoControl	1	3363 0354 53
107	Threaded plug		1	3363 0354 25
108	O-ring		1	3360 3143 70
109	Safety valve	PowerAdapt Only in exchange for the part to be replaced. Consult the Atlas Copco Customer Center/Dealer in your area.	1	3363 0852 70
110	Threaded plug		1	3363 0870 86
111	Back-up ring		1	3363 0870 85
112	Plug		1	3363 0870 87
113	HP-accumulator		2	3363 0949 81
114	Expansion bolt		8	3363 1000 47
115	Washer		8	3363 1000 49
116	O-ring		2	3360 3143 64
117	Back-up ring		2	3360 3280 46
120	O-ring		2	3360 3143 73
121	Allen screw		12	3362 3280 39
122	Connecting screw		1	3361 8546 57
123	O-ring		1	3360 4781 71
125	Non-return valve		1	3361 8545 11
129	O-ring		1	3363 1104 01
<b>140(141,144,145,148-149)</b>	<b>Swivel joint complete</b>		1	3363 0865 71
<b>141(142-143)</b>	<b>Adapter complete</b>		1	3363 1034 70
142	Adapter		1	-
143	Snapping		1	3363 1031 33
144	Adapter		1	3363 0865 69
<b>145(146-147)</b>	<b>Seal kit</b>		1	3361 8504 22
146	O-ring		2	-
147	Back-up ring		2	-
148	Disk		1	3361 3566 45
149	Cap		1	3363 0837 49
<b>150(151,154,155,158-159)</b>	<b>Swivel joint complete</b>		1	3363 0860 81
<b>151(152-153)</b>	<b>Adapter complete</b>		1	3363 1034 70
152	Adapter		1	-
153	Snapping		1	3363 1031 33
154	Adapter		1	3361 3566 43
<b>155(156-157)</b>	<b>Seal kit</b>		1	3361 8504 22
156	O-ring		2	-
157	Back-up ring		2	-
158	Disk		1	3361 3566 45
159	Cap		1	3361 3534 89
161	Threaded insert		8	3363 0949 82
162	Threaded insert		8	3361 0315 29
163	Threaded plug		2	3361 8441 15
164	Strainer disk		2	3361 8441 13
165	Flange		1	3363 1047 87
166	Allen screw		6	3360 1037 50

No.	Description	Remark	Quantity	Part number
<b>180(181-183)</b>	<b>Filling valve complete</b>		1	3363 0872 86
181	Filling valve		1	-
182	Threaded plug		1	3360 4784 26
183	O-ring		1	3360 1751 25
<b>191(192-193)</b>	<b>Tensioning bolt complete</b>		8	3363 0983 21
192	Tensioning bolt		1	3363 1000 11
193	Washer		1	3363 0936 53

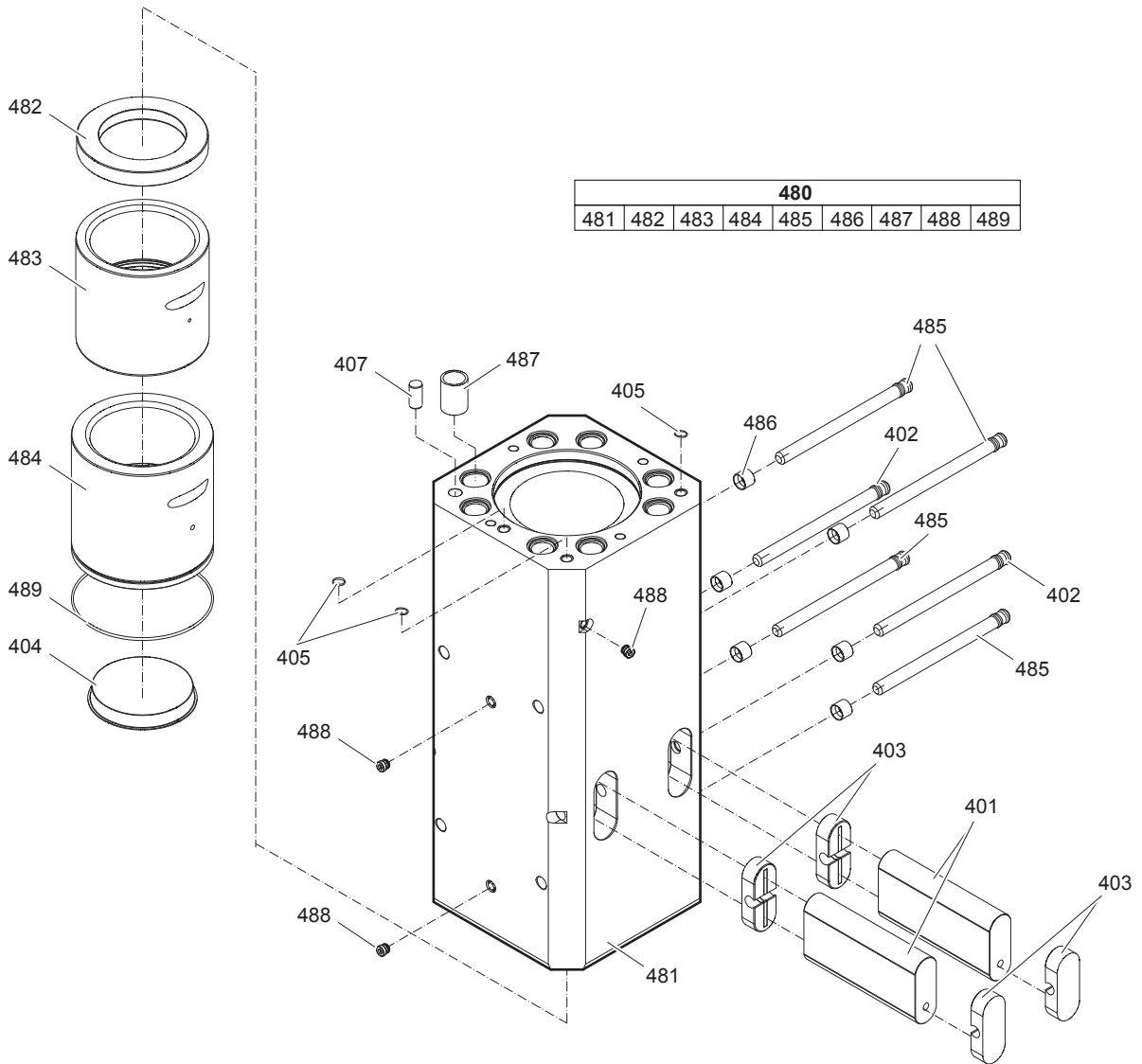


# Percussion unit part 2: cylinder



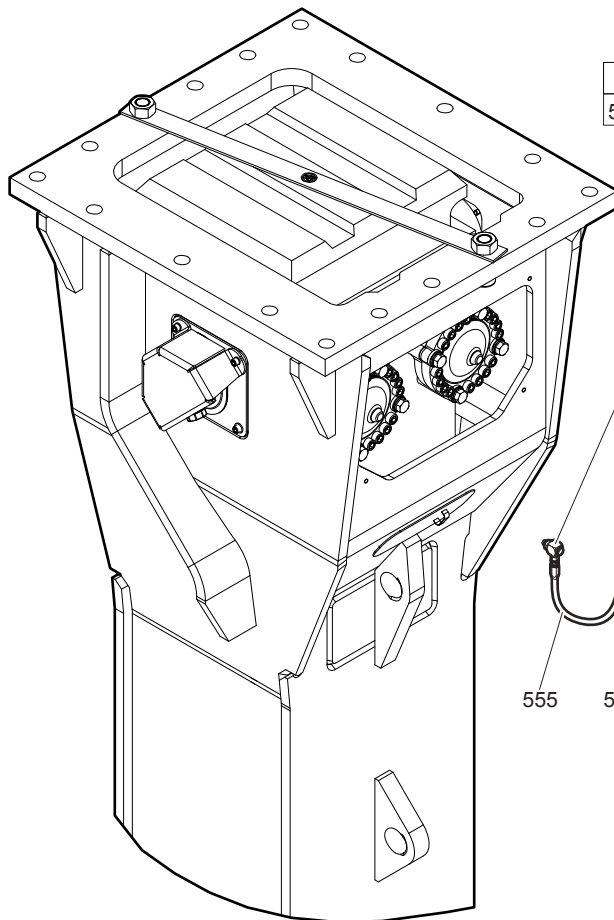
No.	Description	Remark	Quantity	Part number
200	Seal flange		1	3363 1000 13
201	Seal		1	3363 1034 20
204	O-ring		10	3360 4780 97
205	O-ring		4	3360 3143 68
206	O-ring		16	3363 0706 32
207	O-ring		2	3363 0949 78
<b>290(291-292)</b>	<b>Seal kit</b>		2	3363 0983 24
291	Back-up ring		1	-
292	Seal		1	-
300	Cylinder	with no. 601 - 603	1	3363 0983 13
306	Wiper		1	3363 0949 74
350	Percussion piston		1	3363 0983 00
370	Lock pin		1	3360 1068 19
<b>390(391-392)</b>	<b>Seal kit</b>		2	3363 0983 25
391	Back-up ring		1	-
392	Seal		1	-
601	Plug		1	3363 0825 93
602	O-ring		1	3363 0832 45
603	Valve	StartSelect	1	3363 0825 05

# Percussion unit part 3: lower breaker part

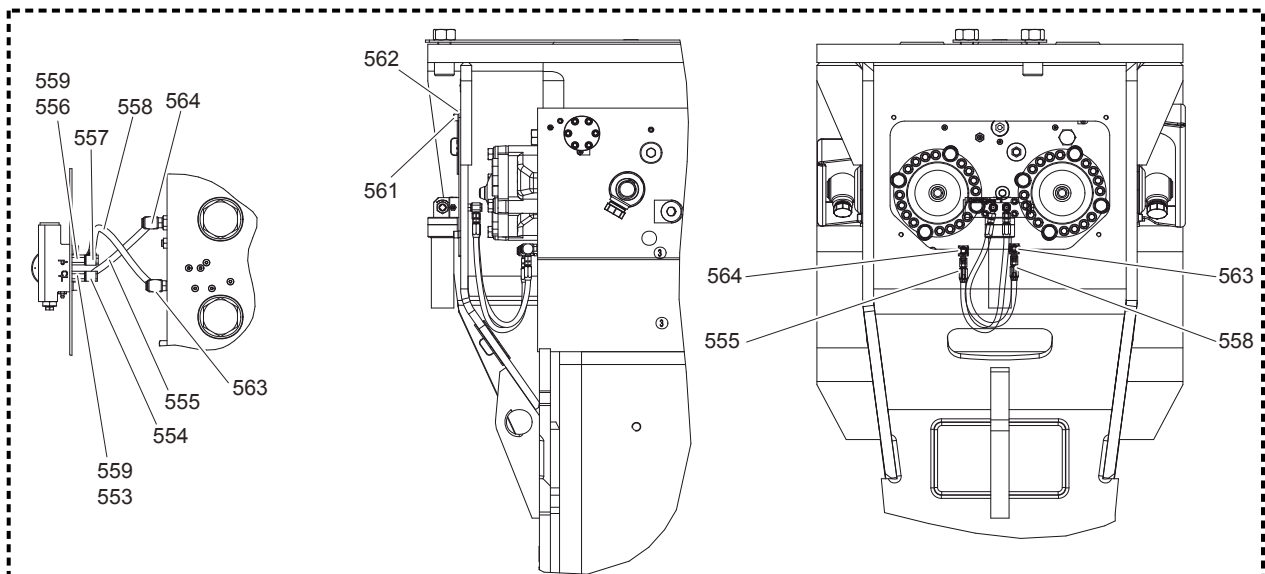
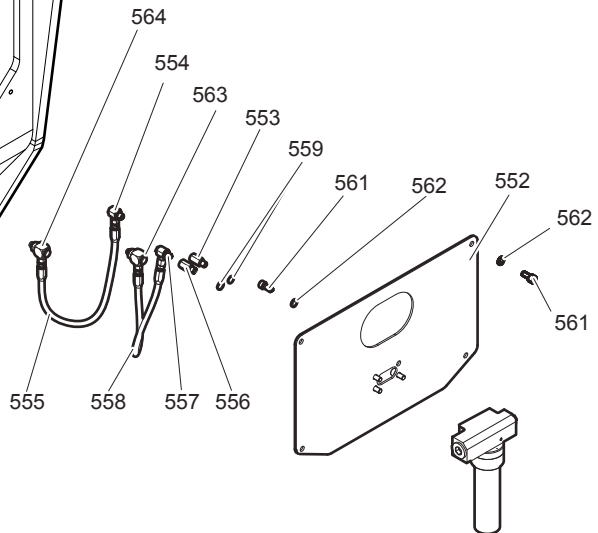


No.	Description	Remark	Quantity	Part number
401	Retainer bar		2	3363 1000 27
402	Bolt		2	3362 2604 31
403	Plug		4	3363 1000 29
404	Protective cap		1	3363 0949 77
405	O-ring		3	3360 3144 53
407	Lock pin		1	3360 1068 18
<b>480(481-489)</b>	<b>Lower breaker part complete</b>	<b>Note:</b> When ordering a lower breaker part for DustProtector version it is imperative to order additionally the base for wiper (no. 18) and the wiper (no. 19).	1	3363 0983 16
481	Lower breaker part		1	-
482	Buffer ring		1	3363 1000 35
483	Wear bush		1	3363 1000 37
484	Wear bush		1	3363 1000 41
485	Bolt		4	3362 2604 31
486	Locking bush		6	3362 2604 33
487	Threaded insert		8	3363 0853 21
488	Plug		4	3363 0863 01
489	O-ring		1	3363 0949 78

# Connecting kit for ContiLube® II

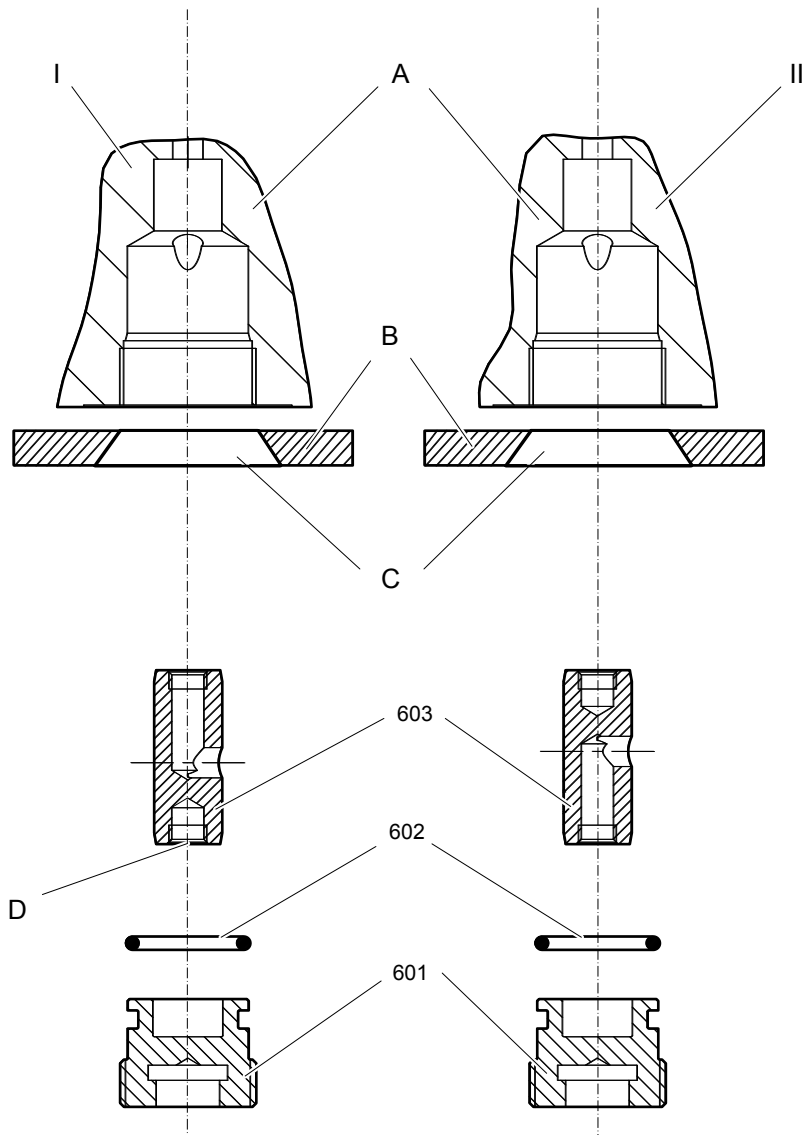


550											
552	553	554	555	556	557	558	559	561	562	563	564



No.	Description	Remark	Quantity	Part number
550(552-564)	Connecting kit		1	3363 0940 58
552	Support		1	3363 0938 59
553	Adapter	secure with Loctite 243	1	3363 0668 87
554	Fitting	secure with Loctite 243	1	3363 0662 33
555	Hydraulic hose	Grease line secure with Loctite Route the hydraulic hoses as shown on the drawing. It must be ensured that the hydraulic hoses can move freely and are not in contact at any point.	1	3363 0838 74
556	Adapter	secure with Loctite 243	1	3363 0687 45
557	Fitting	secure with Loctite 243	1	3363 0662 34
558	Hydraulic hose	Oil line secure with Loctite Route the hydraulic hoses as shown on the drawing. It must be ensured that the hydraulic hoses can move freely and are not in contact at any point.	1	3363 0838 78
559	Seal		2	3363 0669 51
561	Allen screw	secure all 4 allen screws with Loctite 243 screwed in the ContiLube® II	8	3360 1037 50
562	Pair of lock washers		8	3361 8505 96
563	Fitting	secure with Loctite 243	1	3363 0871 85
564	Support		1	3363 0871 86

# StartSelect - AutoStart or AutoStop



No.	Description	Remark	Quantity	Part number
601	Plug		1	3363 0825 93
602	O-ring		1	3363 0832 45
603	Valve	StartSelect	1	3363 0825 05

I = AutoStop setting

II = AutoStart setting (standard setting on delivery)

- A. Port bore in cylinder
- B. Wall of breaker box
- C. Plug of breaker box
- D. M 10 thread (both ends) for mounting

The position of the StartSelect unit is shown on the percussion unit illustrations.

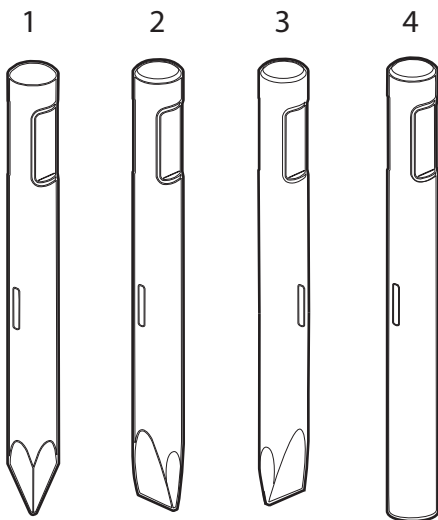
## Optional parts

No.	Description	Remark	Quantity	Part number
11	Floating ring	steel	1	3363 1007 15
484	Wear bush	bronze	1	3363 1000 39

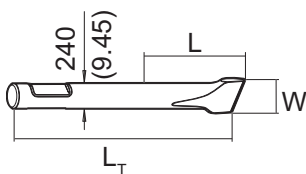
## Tightening torques

No.	Description	Tightening torque	Remark
36	Allen screw	85 Nm	Allen key size 10
44	Allen screw	85 Nm	Allen key size 10
104	Allen screw	380 Nm	Allen key size 17
107	Threaded plug	300 Nm	Allen key size 22
110	Threaded plug	300 Nm	Socket spanner size 24
114	Expansion bolt		Socket spanner size 30 Tightening regulations: 1. Treat the threads and threaded inserts for the expansion bolts with an Anti-Seize agent. 2. Treat the surfaces between the bolt head, washer, and HP-accumulator cover with Anti-Seize. 3. Place on the HP-accumulator, and tighten the expansion bolts by hand in a crosswise fashion. 4. Pretighten the expansion bolts to 120 Nm, proceeding in a crosswise fashion, 5. then tighten each bolt through 30° in a crosswise fashion, 6. finally tighten each bolt again through 60° in a crosswise fashion.
120	Allen screw	80 Nm	Allen key size 10
125	Non-return valve	200 Nm	Socket spanner size 41
166	Allen screw	80 Nm	Allen key size 10
181	Filling valve	130 Nm	Socket spanner size 22
182	Threaded plug	20 Nm	Allen key size 5
192	Tensioning bolt		Torque wrench or Power wrench size 75 1. Pretighten the tensioning bolts to 500 Nm, proceeding in a crosswise fashion, 2. then tighten each tensioning bolt through 120° (2 sides of hexagonal head) in a crosswise fashion, 3. then tighten each tensioning bolt through 120° (2 sides of hexagonal head) in a crosswise fashion, 4. finally tighten each tensioning bolt again through 150° (2 1/2 sides of hexagonal head) in a crosswise fashion.
601	Plug	200 Nm	Allen key size 17

## Working tools



## HB 10000 DustProtector



### Metric

No.	Description	Remark	W (mm)	L (mm)	L <sub>T</sub> (mm)	Wt (kg)	Part number
1	Moil point	SilverLine		880	1900	580.0	3363 0981 07
2	Chisel (cross)	SilverLine	240	880	1900	606.0	3363 0981 05
3	Chisel (parallel)	SilverLine	240	880	1900	606.0	3363 0981 06
4	Blunt tool	SilverLine		880	1900	651.0	3363 0990 51

### Imperial

No.	Description	Remark	W (in.)	L (in.)	L <sub>T</sub> (in.)	Wt (lb)	Part number
1	Moil point	SilverLine		34.65	74.80	1278.7	3363 0981 07
2	Chisel (cross)	SilverLine	9.45	34.65	74.80	1336.0	3363 0981 05
3	Chisel (parallel)	SilverLine	9.45	34.65	74.80	1336.0	3363 0981 06
4	Blunt tool	SilverLine		34.65	74.80	1435.2	3363 0990 51

## Accessories

### Hydraulic hoses

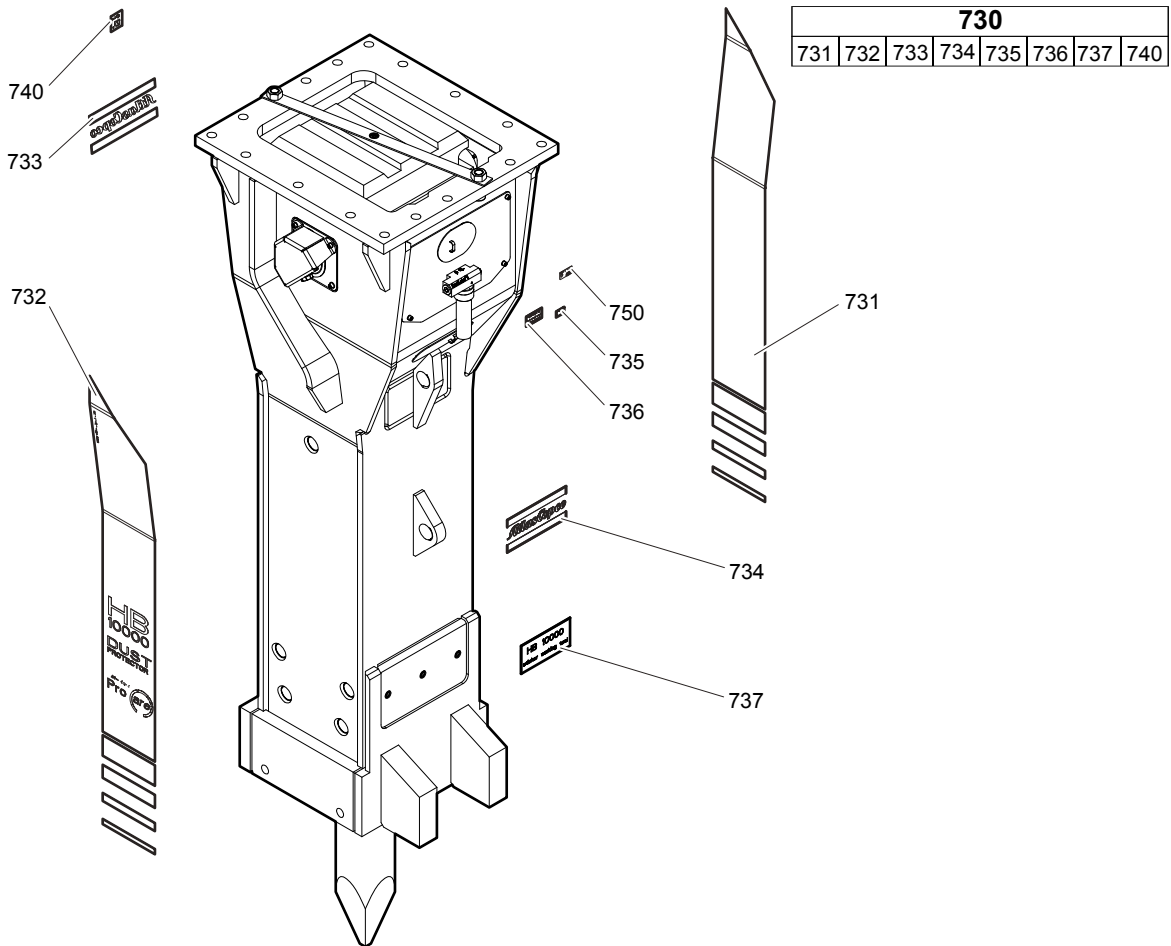
Description	Remark	Quantity	Part number
Hose	Feed line I.D. 32 (1 1/4"), both ends JIC 1 5/8", length 2800 mm (110 in.)	1	3361 8538 60
Hose	Return line I.D. 40 (1 1/2"), both ends JIC 1 7/8", length 2800 mm (110 in.)	1	3363 0835 63
Hose	Feed line I.D. 32 (1 1/4"), both ends JIC 1 5/8", length 3500 mm (138 in.)	1	3361 8538 61
Hose	Return line I.D. 40 (1 1/2"), both ends JIC 1 7/8", length 3500 mm (138 in.)	1	3363 0835 62

### Optional equipment

Description	Remark	Quantity	Part number
Chisel paste for ContiLube® II	12 x 500 g (1.1 lbs)	1	3363 0912 00
Grease gun for cartridge ContiLube® II		1	3363 0345 67
Grease nipple		1	3360 4337 74
Service box no. II with nitrogen cylinder	5 l 1.1 gal (1.32 US gal)	1	3363 0898 45
Service box no. III without nitrogen cylinder		1	3363 0949 40
Test gauge lower wear bush		1	3363 1004 67
Inside calliper upper wear bush		1	3363 0949 52
Adapter plate matching the carrier Consult the Atlas Copco Customer Center/Dealer in your area.		1	-
Base plate with threaded inserts		1	3363 1046 09
Bolt kit		1	3363 1030 61
Base plate with through borings		1	3363 1028 75
Bolt kit		1	3363 0945 78
Allen key	27 mm for bolt kit	1	3360 1038 02
Adapter kit for underwater applications		1	3363 1030 77
Vertebral block (hoisting device)		2	3363 0944 00
Piston retainer		1	3363 1000 51

# Kits

## Label kit HB 10000 DustProtector



No.	Description	Remark	Quantity	Part number
<b>730(731-740)</b>	<b>Label kit HB 10000 DustProtector</b>		1	3363 0983 27
731	Label HB 10000 DustProtector		1	-
732	Label HB 10000 DustProtector		1	-
733	Label Atlas Copco		1	-
734	Label Atlas Copco		2	-
735	Lubricating symbol		1	-
736	Label gas pressure		2	-
737	Label working tools		1	-
740	Label noise level		1	-
750	Name plate		1	-

## Seal kit

No.	Description	Remark	Quantity	Part number
	<b>Seal kit</b>		1	3363 0983 22
103	O-ring		1	3360 4782 91
108	O-ring		1	3360 3143 70
111	Back-up ring		1	3363 0870 85
116	O-ring		2	3360 3143 64
117	Back-up ring		2	3360 3280 46
120	O-ring		2	3360 3143 73
123	O-ring		1	3360 4781 71
129	O-ring		1	3363 1104 01
<b>145(146-147)</b>	<b>Seal kit</b>		1	3361 8504 22
146	O-ring		2	3361 8462 82
147	Back-up ring		2	3361 8462 81
<b>155(156-157)</b>	<b>Seal kit</b>		1	3361 8504 22
156	O-ring		2	3361 8462 82
157	Back-up ring		2	3361 8462 81
182	Threaded plug		1	3360 4784 26
183	O-ring		1	3360 1751 25
201	Seal		1	3363 1034 20
204	O-ring		10	3360 4780 97
205	O-ring		4	3360 3143 68
206	O-ring		16	3363 0706 32
207	O-ring		2	3363 0949 78
<b>290(291-292)</b>	<b>Seal kit</b>		2	3363 0983 24
291	Back-up ring		1	3363 1000 21
292	O-ring		1	3360 4780 97
306	Wiper		1	3363 0949 74
<b>390(391-392)</b>	<b>Seal kit</b>		2	3363 0983 25
391	Seal		1	3363 1000 23
392	Back-up ring		1	3363 1000 25
405	O-ring		3	3360 3144 53
489	O-ring		1	3363 0949 78
602	O-ring		1	3363 0832 45

## Seal kit for swivel joint (ContiLube® II)

No.	Description	Remark	Quantity	Part number
	<b>Seal kit</b>		1	3363 0917 32

## Plastic parts kit

No.	Description	Remark	Quantity	Part number
	<b>Plastic parts kit</b>		1	3363 0948 23
2	Elastic pad		1	3363 0929 57
3	Shock absorber		2	3363 0938 53
4	Guide plate		4	3363 0938 55
5	Guide plate		2	3362 2626 67
6	Guide plate		2	3362 2626 65
7	Guide plate		1	3363 1007 13
8	Plate		2	3363 1007 77

## Tensioning bolt kit

No.	Description	Remark	Quantity	Part number
	<b>Tensioning bolt kit</b>		1	3363 0983 29
192	Tensioning bolt		4	3363 1000 11
193	Washer		4	3363 0936 53
487	Threaded insert		4	3363 0853 21
	Anti-Seize 120 g		1	3363 0943 00

## DustProtector kit

No.	Description	Remark	Quantity	Part number
	<b>DustProtector kit</b>		1	3363 0983 30
11	Floating ring		1	3363 1007 01
12	Counter ring		1	3363 1007 03
13	Guide ring		1	3363 1007 05
14	Bolt		2	3363 1007 07
15	Locking bush		2	3361 8543 63

## Noise protection kit

No.	Description	Remark	Quantity	Part number
	<b>Noise protection kit</b>		1	3363 0983 28
31	Cover		2	3363 0311 81
32	Plug		13	3363 0860 17
40	Cover		1	3363 0926 97
41	Cover		1	3363 0680 99

## Lower breaker part kit DustProtector (bronze)

No.	Description	Remark	Quantity	Part number
	<b>Lower breaker part kit</b>	HB 10000 DustProtector with lower wear bush bronze	1	3363 1034 15
18	Base for wiper		1	3363 1007 09
19	Wiper		1	3363 1007 11
401	Retainer bar		2	3363 1000 27
402	Bolt		2	3362 2604 31
403	Plug		4	3363 1000 29
482	Buffer ring		1	3363 1000 35
483	Wear bush		1	3363 1000 37
484	Wear bush	bronze	1	3363 1000 39
485	Bolt		4	3362 2604 31
486	Locking bush		6	3362 2604 33
489	O-ring		1	3363 0949 78
	Chisel paste		1	3315 0381 00
	Test gauge		1	3363 1004 67

## Lower breaker part kit DustProtector (steel)

No.	Description	Remark	Quantity	Part number
	<b>Lower breaker part kit</b>	HB 10000 DustProtector with lower wear bush steel	1	3363 0983 32
18	Base for wiper		1	3363 1007 09
19	Wiper		1	3363 1007 11
401	Retainer bar		2	3363 1000 27
402	Bolt		2	3362 2604 31
403	Plug		4	3363 1000 29
482	Buffer ring		1	3363 1000 35
483	Wear bush		1	3363 1000 37
484	Wear bush	steel	1	3363 1000 41
485	Bolt		4	3362 2604 31
486	Locking bush		6	3362 2604 33
489	O-ring		1	3363 0949 78
	Chisel paste		1	3315 0381 00
	Test gauge		1	3363 1004 67

## Expansion bolt kit

No.	Description	Remark	Quantity	Part number
	<b>Expansion bolt kit</b>		1	3363 0983 38
114	Expansion bolt		4	3363 1000 47
115	Washer		4	3363 1000 49
161	Threaded insert		4	3363 0949 82

## Accumulator repair kit

---

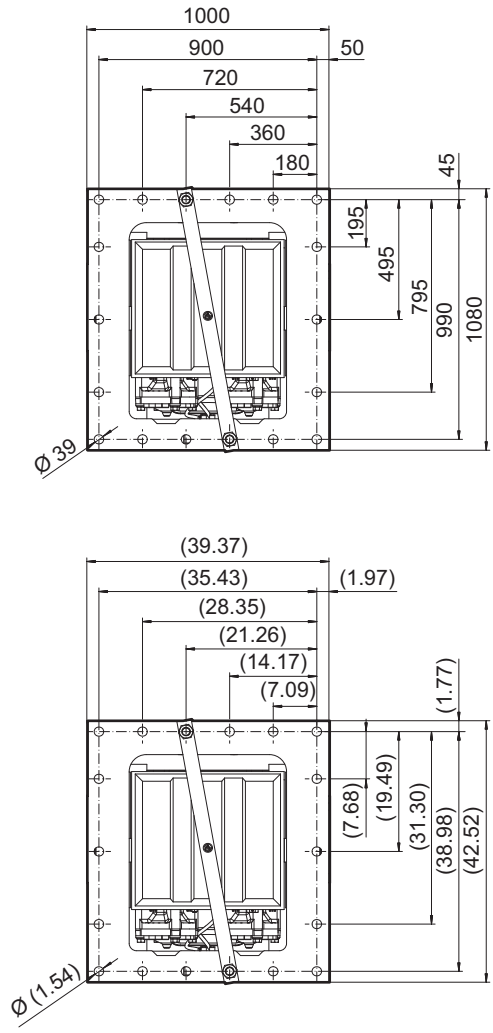
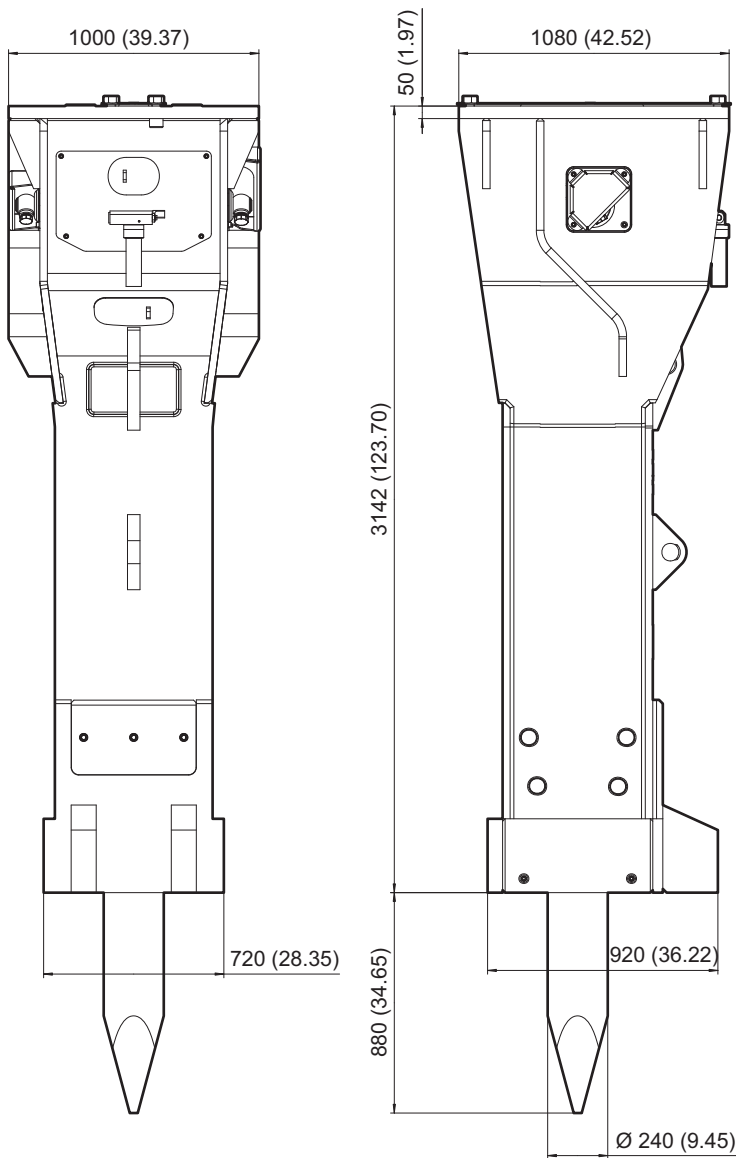
Accumulators are pressure containers in the context of the European Pressure Equipment Directive 97/23/EC. You have to observe all safety instructions comply with the laws and all national/regional regulations of your country if you repair accumulators.

No.	Description	Remark	Quantity	Part number
	<b>Accumulator repair kit</b>		1	3363 0898 50
	Diaphragm		1	3361 3290 22
	Filling screw		1	3360 3322 59
	O-ring		1	3360 3144 60
	Protective cap		1	3361 3350 25
	O-ring		1	3360 3143 64
	Back-up ring		1	3360 3280 46

# Dimensions

## Dimensions HB 10000 DustProtector

mm (inch)









Any unauthorized use or copying of the contents or any part thereof is prohibited.  
This applies in particular to trademarks, model denominations, part numbers, and drawings.

© 2010 Atlas Copco Construction Tools GmbH | No. 3390 7266 01 | 2010-11-05

[www.atlascopco.com](http://www.atlascopco.com)