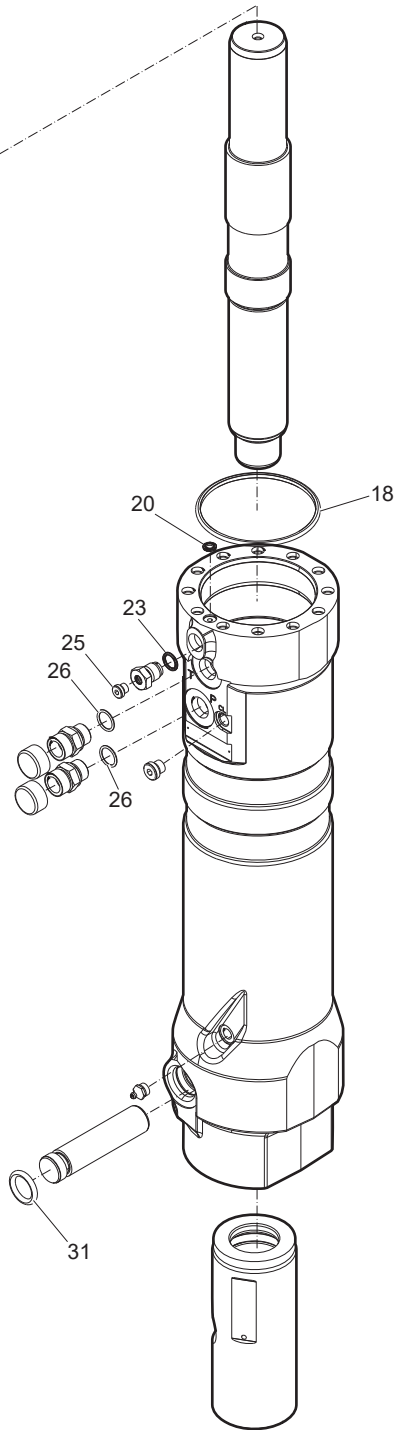
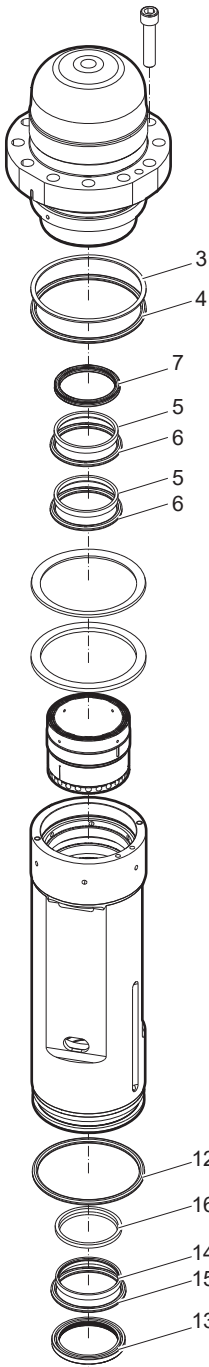
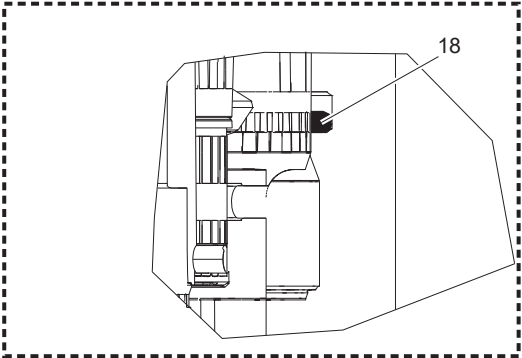
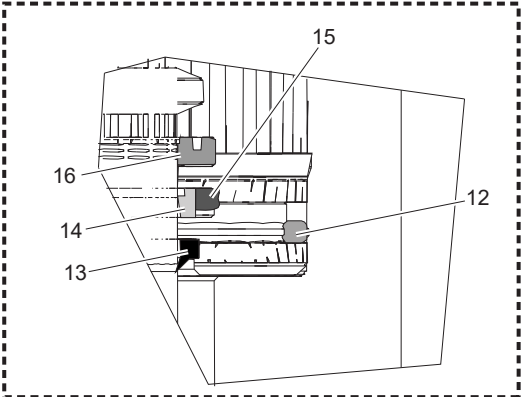
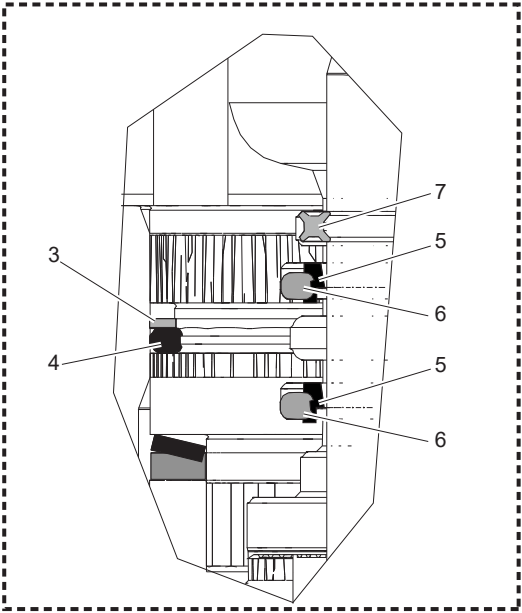

Maintenance kit

Seals

Seal kit 3382070008



Item	Part No.	Name	Qty	L
3	3361192036	BACK-UP RING	1	
4	3363091712	O-RING	1	
5	3361192032	SEAL	2	
6	3361192033	O-RING	2	
7	3361192031	QUADRING	1	
12	3363091709	O-RING	2	
13	3361192041	WIPER	1	
14	3361192039	SEAL	1	
15	3361192040	O-RING	1	
16	3361192038	SEAL	1	
18	3315296615	SEAL	1	
20	3115329002	SEAL RING	1	
23	0663925100	O-RING	1	
25	3360478426	THREADED PLUG	1	
26	3361192067	O-RING	2	
31	0663212006	O-RING	1	

This document contains no safety instructions. For information on operating, servicing or repairing the hydraulic attachment, the relevant Safety and operating instructions must be consulted at all costs. Please observe the safety instructions listed in the relevant Safety and operating instructions.

Any unauthorized use or copying of the contents or any part thereof is prohibited.
This applies in particular to trademarks, model denominations, part numbers, and
drawings.