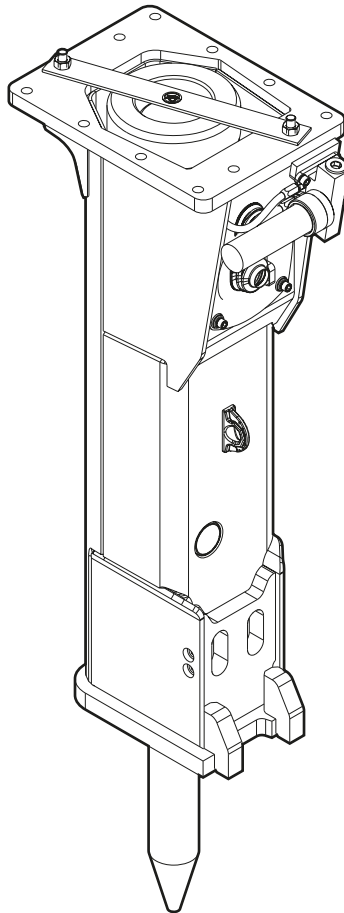


EC 100T CL

Spare parts list Hydraulic breakers

EC 100T CL s/n DEQ180094 - DEQ181462



General information

This spare parts list applies to the following:

Part number	Description
3363115892	Hydraulic breaker EC 100T with ContiLube® II

Use only authorized parts. Any damage or malfunction caused by the use of unauthorized parts is not covered by Warranty or Product Liability. Any unauthorized use or copying of the contents or any part thereof is prohibited. This applies in particular to trademarks, model denominations, part numbers, and drawings.

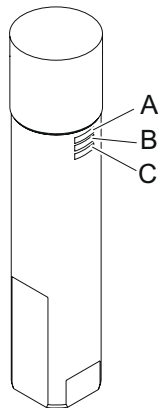
Instructions for use

This spare parts list contains no safety regulations and is merely intended to assist in the ordering of spare parts. For information about operating, servicing, or repairing, the relevant Safety and operating instructions must be consulted at all costs. Please observe the safety instructions listed in the relevant Safety and operating instructions!

Instructions for ordering

It is essential to indicate the serial number of the hydraulic attachment when ordering spare parts! Please note the full identification number of your hydraulic attachment. The code can be found on the main body. Determine the quantity of individual parts which are required and need to be ordered. The order must indicate the following details:

- full identification code of the hydraulic attachment
- required quantity
- part number
- description



- A. Type
- B. Serial number
- C. Main body number

Service, repair and wear part kits

Label kit	1
Kit list	3

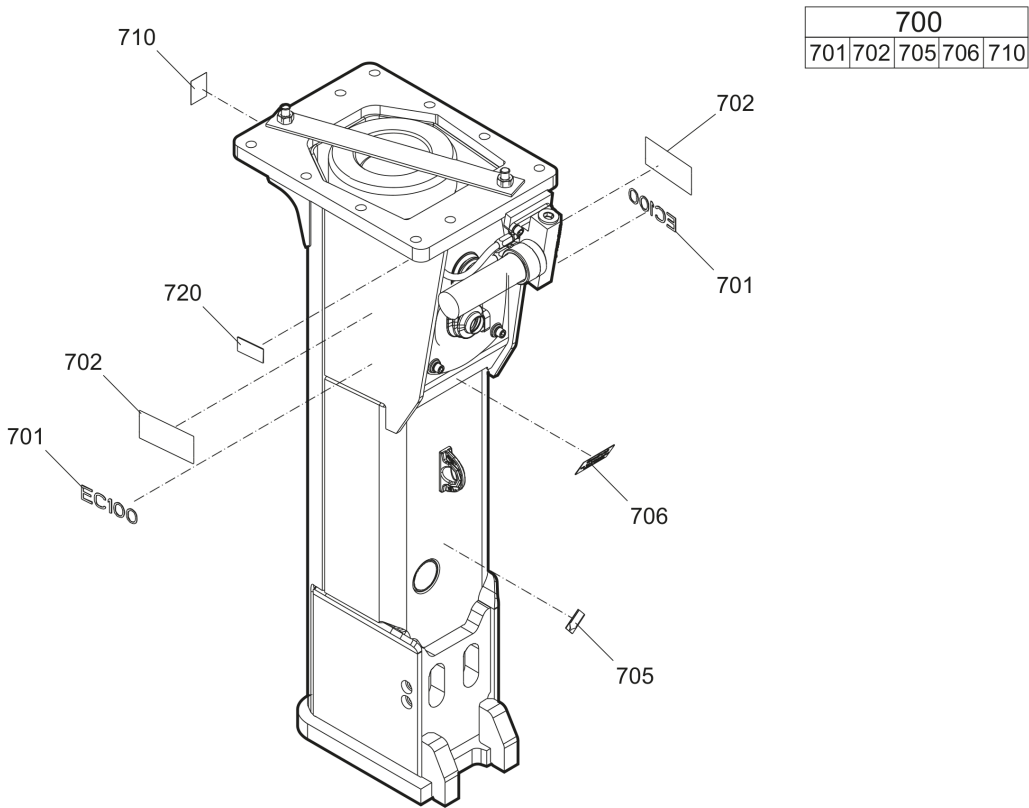
Mechanical

Hydraulic breaker	5
Percussion unit part 1: Cover	7
Percussion unit part 2: main body complete	9
Connecting parts for automatic lubrication system	11
Tightening torques	13
Dimensions	15

Options / accessories

Hydraulic hoses	16
Optional equipment	19
Working tools	21

Service, repair and wear part kits Label kit



Item	Part No.	Name	Qty	L
700(701-710)	3363117021	Label kit EC 100T	1	
701		Product label "EC 100T"	2	
702		Label "Company"	2	
705		Label - Lubricating symbol	1	
706		Label - Gas pressure	1	
710		Sound power label	1	
720		Name plate - Consult the authorized Customer Center/Dealer in your area.	1	

Service, repair and wear part kits Kit list

NO EXPLODED VIEW
AVAILABLE
FOR THIS BOM

Item	Part No.	Name	Qty	L
KIT	3363122460	Seal kit	1	
101	3361853317	O-ring	1	
107	3360314494	O-ring	1	
160	3360314551	O-ring	2	
182	3360478426	Threaded plug	1	
183	3360175125	O-ring	1	
201	3363109525	Seal	1	
202	3363109527	Back-up ring	1	
203	3363091710	Seal	1	
302	3363110010	Seal	6	
303	3363066582	O-ring	1	
305	3363122402	Seal	2	
306	3363091714	Wiper	1	
307	3363083573	Seal	8	
308	3362267583	Stirromatic	1	
309	3362267581	Seal	1	
KIT	3363091732	Seal kit for swivel joint for automatic lubrication system	1	

Item	Part No.	Name	Qty	L
1		Percussion unit	1	A
2	3363104943	Elastic pad	1	
3	3363114493	Shock absorber	1	
4	3363113793	Guide plate	1	
5	3363115900	Guide plate	1	
6	3363115899	Guide ring	1	
7	3363104955	Cap	1	
20(21-24)	3363083731	Transport safety device complete	1	
21		Transport safety device	1	
22	3360026786	Allen screw	2	
23	3363091872	Label transport safety device	1	
24	3360103251	Nut	2	
31	3363115923	Plate	1	
34	3361850596	Pair of lock washers	3	
35	3360103750	Allen screw	3	
37	3362267897	Plug	2	
38	3362267893	Plug	1	
52	3363114486	Retainer bar	2	
53	3363114673	Plug	2	
54	3363114461	Bolt	2	
95	3363111993	Lifting eye	1	B
99	3363115850	Breaker box	1	C
500	3363067123	Automatic lubrication system	1	D
550		Connecting parts	1	A

Comments for Page: Hydraulic breaker

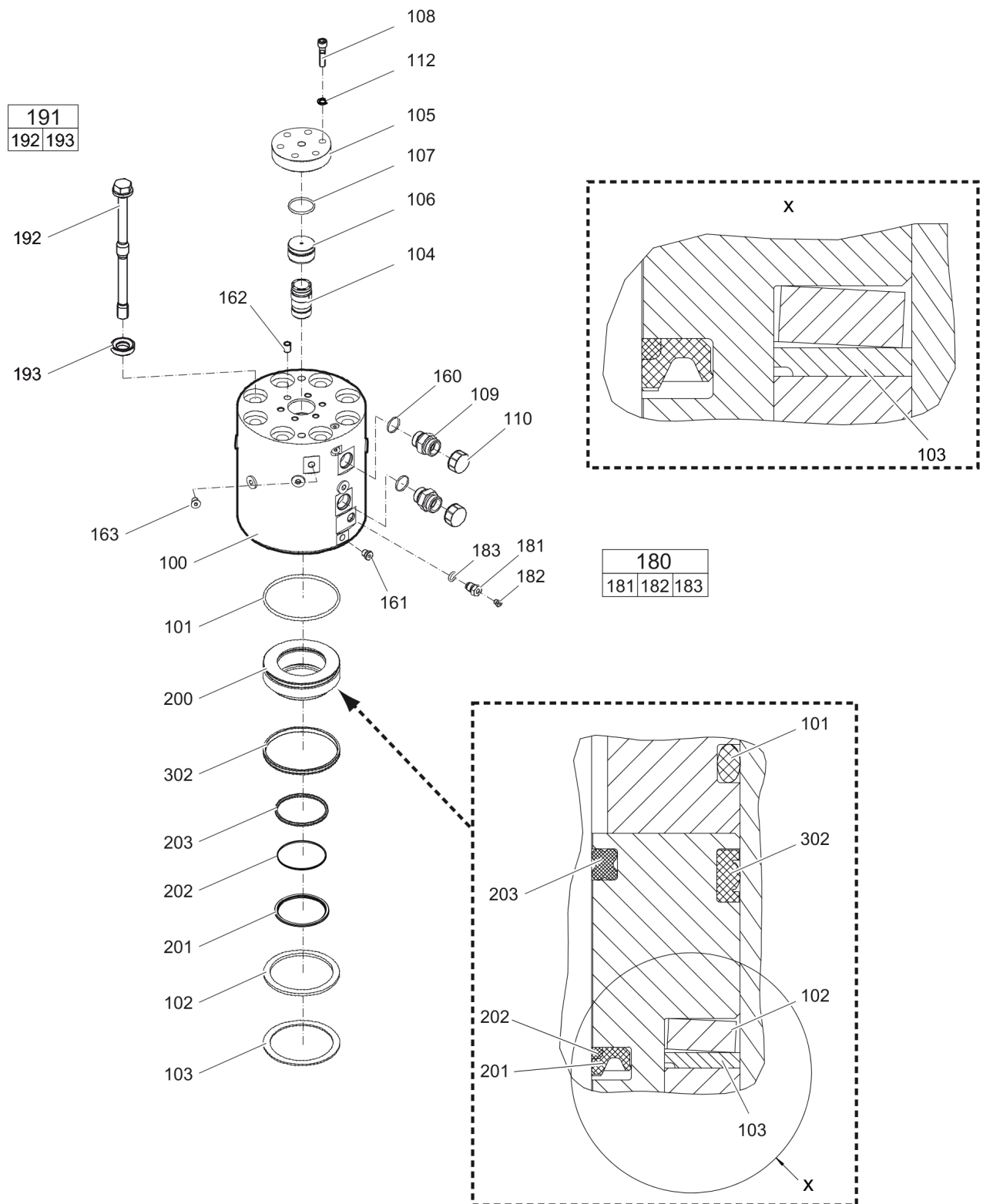
(L)OCAL REMARKS

A | see separate chapter

B | professional welding process necessary

C | with item 95

D | see separate Safety and operating instructions

Mechanical Percussion unit part 1: Cover

Item	Part No.	Name	Qty	L
100	3363110014	Cover	1	A
101	3361853317	O-ring	1	
102	3363110009	Plate spring	1	
103	3363109431	Disk	1	B
104	3363109417	Main control valve	1	
105	3363109425	Cover	1	
106	3363109419	Cap	1	
107	3360314494	O-ring	1	
108	3360026514	Allen screw	6	
109	3360478190	Fitting	2	C
110	3361353487	Cap	2	
112	3361850596	Pair of lock washers	6	
160	3360314551	O-ring	2	
161	3363066963	Plug, M14 x 1.5 mm	1	
162	3363110012	Threaded insert	6	
163	3360478439	Threaded plug	1	
180(181-183)	3363087286	Filling valve complete	1	
181		Filling valve	1	
182	3360478426	Threaded plug	1	
183	3360175125	O-ring	1	
191(192-193)	3363110057	Bolt complete	8	
192		Bolt	1	
193	3363109423	Washer	1	
200	3363109415	Seal bush	1	
201	3363109525	Seal	1	
202	3363109527	Back-up ring	1	
203	3363091710	Seal	1	
302	3363110010	Seal	1	

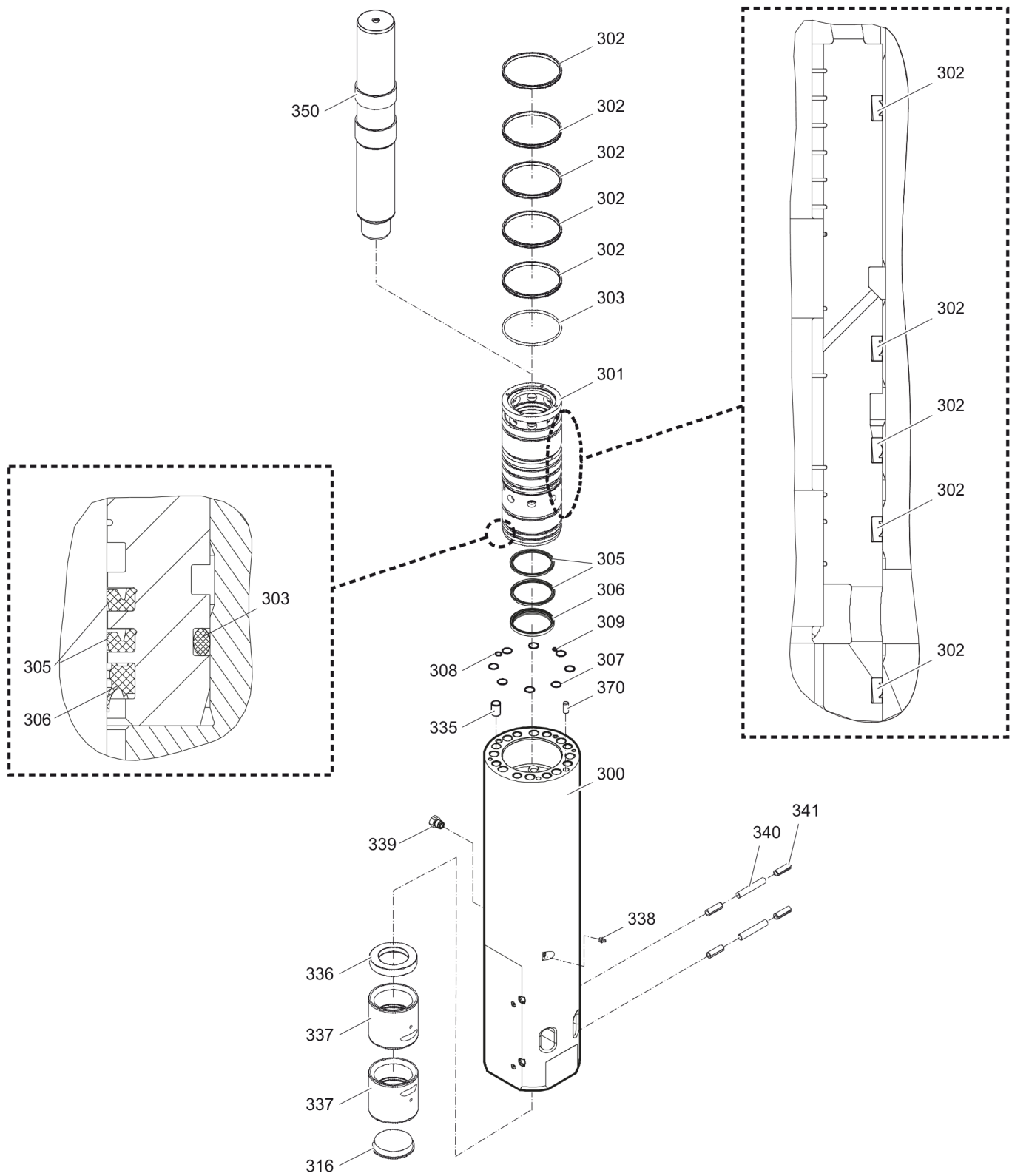
Comments for Page: Percussion unit part 1: Cover

(L)OCAL REMARKS

A | with item 161 - 163

B | observe mounting direction

C | with item 160

Mechanical Percussion unit part 2: main body complete

Refer to Parts Online for the most up to date information. The printed information might be outdated.

Wed Feb 07 08:46:47 UTC 2018

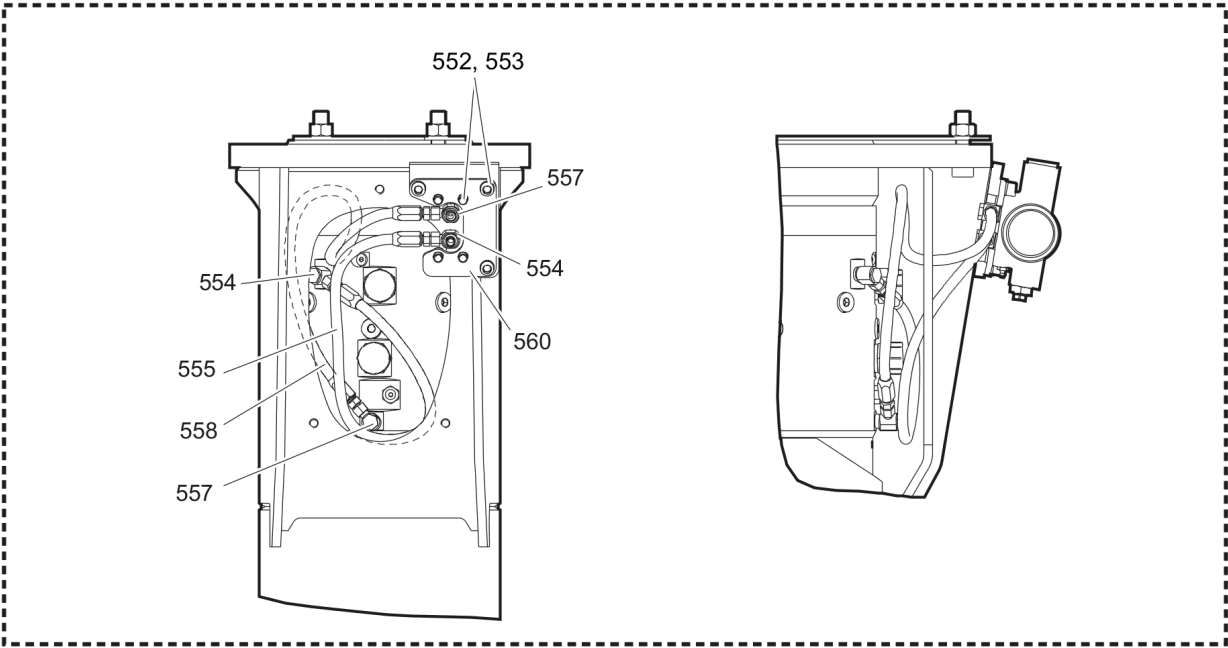
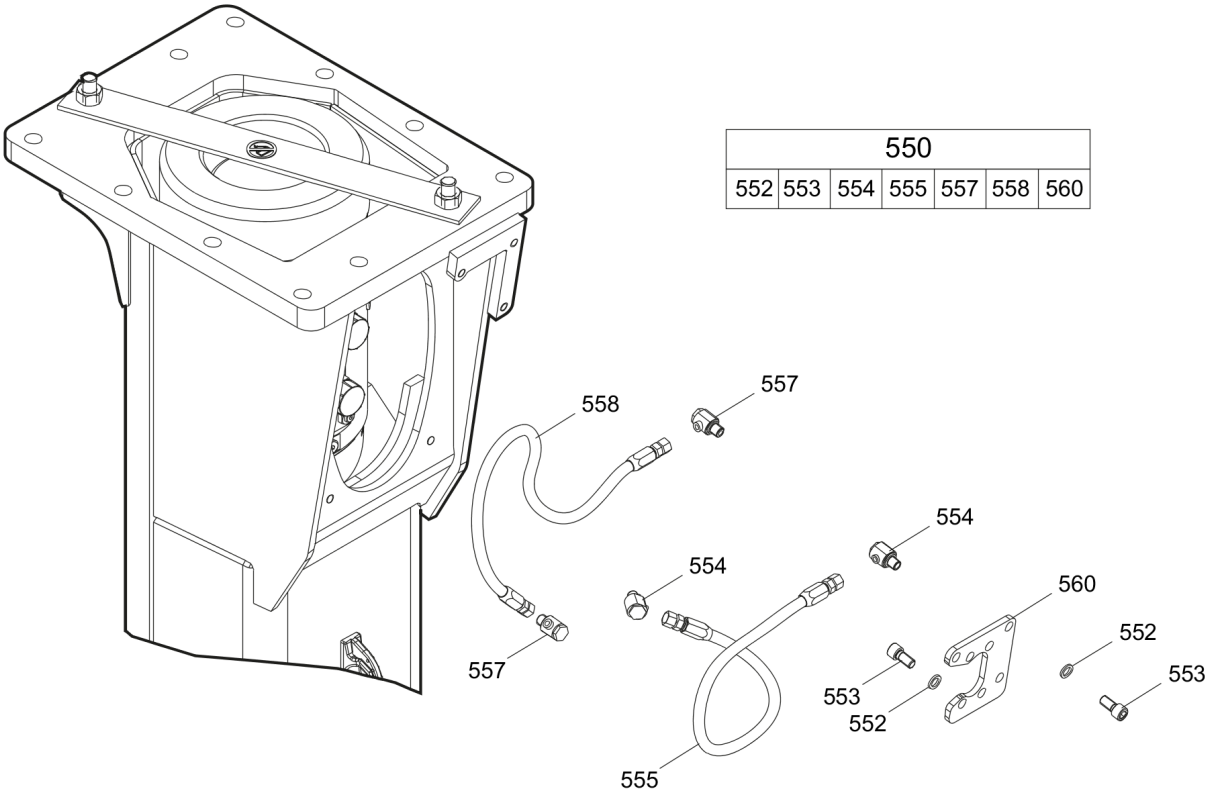
Item	Part No.	Name	Qty	L
300	3363114612	Main body	1	A
301	3363122452	Cylinder bush	1	
302	3363110010	Seal	5	
303	3363066582	O-ring	1	
305	3363122402	Seal	2	
306	3363091714	Wiper	1	
307	3363083573	Seal	8	
308	3362267583	Stirromatic	1	
309	3362267581	Seal	1	
316	3363031713	Protective cap	1	
335	3363110011	Threaded insert	8	
336	3363109427	Impact ring	1	
337	3363109429	Wear bush	2	
338	3360433774	Grease nipple	1	
339	3363109435	Non return valve, G1/2 in.	1	
340	3362261509	Pin	2	
341	3363091201	Spring dowel sleeve	4	
350	3363110066	Percussion piston	1	
370	3360106784	Parallel pin 14X28	1	

Comments for Page: Percussion unit part 2: main body complete

(L)OCAL REMARKS

A | with item 335 - 341

Mechanical Connecting parts for automatic lubrication system



Item	Part No.	Name	Qty	L
550(552-560)		Connecting parts	1	
552	3361850596	Pair of lock washers	7	
553	3360103750	Allen screw	7	A
554	3363066233	Fitting	2	B
555	3363083873	Hydraulic hose	1	C
557	3363066234	Fitting	2	D
558	3363087394	Hydraulic hose	1	E
560	3363115928	Support	1	

Comments for Page: Connecting parts for automatic lubrication system

(L)OCAL REMARKS

A | secure all 4 allen screws with Loctite 243 screwed in the ContiLube® II

B | secure with Loctite 243

C | Grease line

secure with Loctite 243

Route the hydraulic hoses as shown on the drawing. It must be ensured that the hydraulic hoses can move freely and are not in contact at any point.

D | secure with Loctite 243

E | Oil line

secure with Loctite 243

Route the hydraulic hoses as shown on the drawing. It must be ensured that the hydraulic hoses can move freely and are not in contact at any point.

Mechanical Tightening torques

NO EXPLODED VIEW
AVAILABLE
FOR THIS BOM

Item	Part No.	Name	Qty	L
35	-	Allen screw - 10 Nm		A
108	-	Allen screw - 85 Nm		B
109	-	Fitting - 120 Nm		C
181	-	Filling valve - 130 Nm		D
182	-	Threaded plug - 20 Nm		E
192	-	Bolt		F
339	-	Non-return valve - 200 Nm		G
553	-	Allen screw - 85 Nm		H
554	-	Fitting - 45 Nm		I
555	-	Hydraulic hose grease line - 16 Nm		J
557	-	Fitting - 55 Nm		K
558	-	Hydraulic hose, oil line - 42 Nm		L

Comments for Page: Tightening torques

(L)OCAL REMARKS

A | Allen key size 10

B | Allen key size 10

C | Open-end wrench size 41

D | Socket spanner size 22

E | Allen key size 5

F | Torque wrench or Power wrench size 32

1. Pre-tighten the bolts to 100 Nm, proceeding in a crosswise fashion,
2. pre-tighten the bolts to 100 Nm again, proceeding in a crosswise fashion,
3. then tighten each bolt through 90° (1 ½ sides of hexagonal head) in a crosswise fashion,
4. finally tighten each bolt again through 90° (1 ½ sides of hexagonal head) in a crosswise fashion.

G | Socket wrench size 27

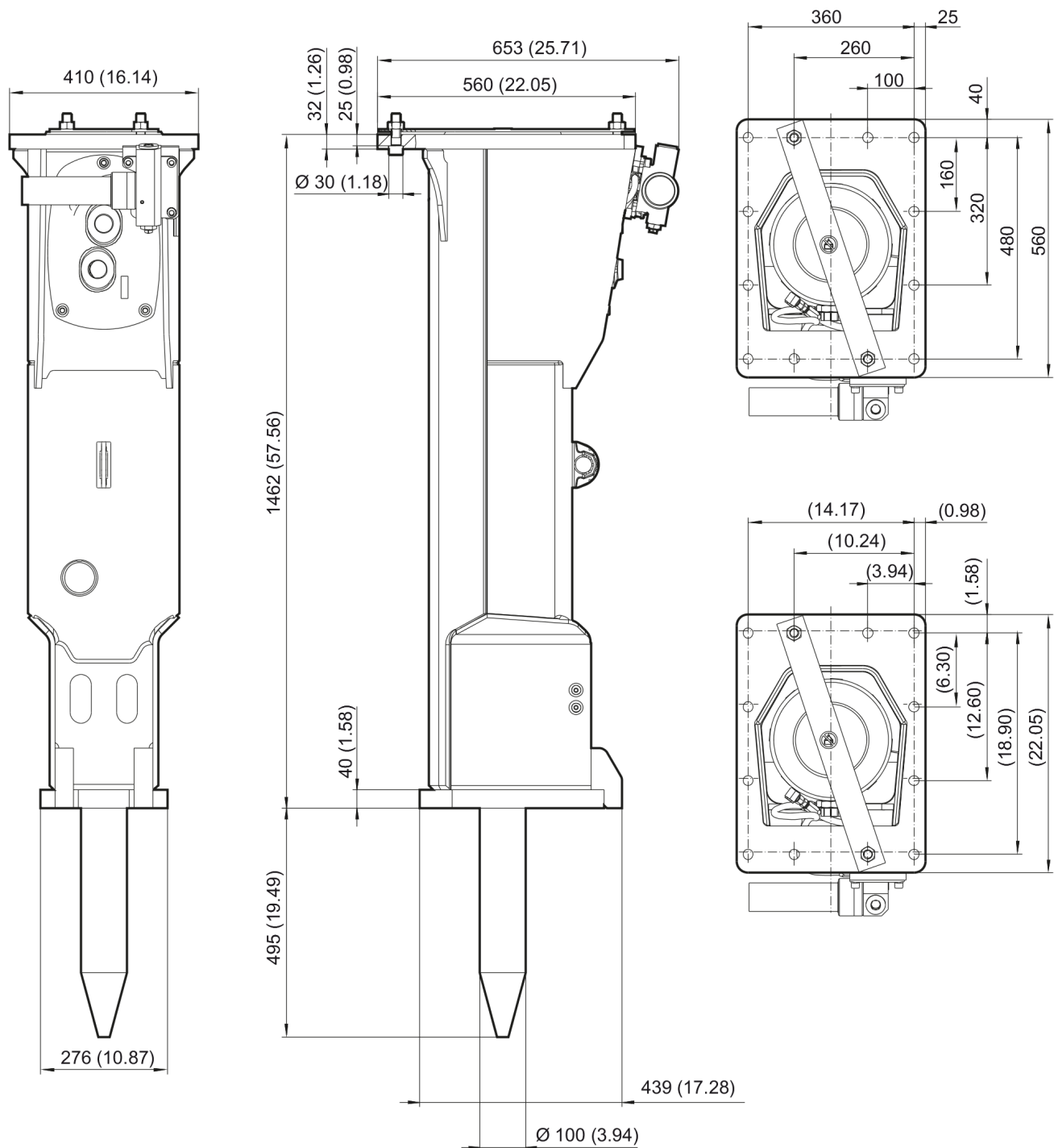
H | Allen key size 10

I | Open-ended wrench size 19, 22, 17

J | Open-ended wrench size 17

K | Open-ended wrench size 19, 19, 22

L | Open-ended wrench size 19

Mechanical Dimensions

Refer to Parts Online for the most up to date information. The printed information might be outdated.

Wed Feb 07 08:46:48 UTC 2018

This page intentionally left blank

Options / accessories Hydraulic hoses

NO EXPLODED VIEW
AVAILABLE
FOR THIS BOM

Item	Part No.	Name	Qty	L
-	3360332294	Hydraulic hose, I.D. 20 (0.79 in.), both ends M36 x 2 mm conical seal 24°, length 2,300 mm (90.5 in.)	2	
-	3363085947	Hydraulic hose, I.D. 20 (0.79 in.), both ends M36 x 2 mm conical seal 24°, length 2,800 mm (110.2 in.)	2	

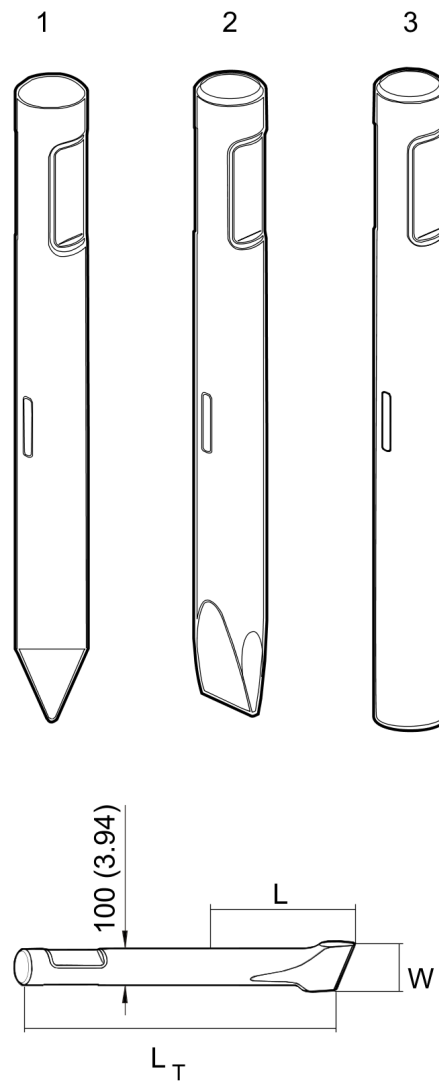
Options / accessories Optional equipment

NO EXPLODED VIEW
AVAILABLE
FOR THIS BOM

Item	Part No.	Name	Qty	L
-	3363091200	Chisel paste cartridge, 12 x 500 g (1.1 lbs)	1	
-	3363034567	Grease gun for 500 g cartridge	1	
-	3363089844	Maintenance and charging box with nitrogen cylinder, 2 l, 0.43 gal (0.53 US gal)	1	
-	3363094940	Maintenance and charging box without nitrogen cylinder	1	
-	3362235293	Test gauge lower wear bush	1	
-	3363094952	Inside callipers upper wear bush	1	
-		Adapter plate matching the carrier. Consult the authorized Customer Center/Dealer in your area.	1	
-	3363099797	Base plate with threaded inserts	1	
-	3363094537	Bolt kit	1	
-	3363100695	Base plate with through borings	1	
-	3363094574	Bolt kit	1	
-	3360209253	Allen key (19 mm)	1	
-	3363117805	Automatic lubrication system kit	1	A

Comments for Page: Optional equipment

A | ContiLube® II

Options / accessories Working tools

Item	Part No.	Name	Qty	L
1	3363115931	Moil point		A
2	3363115932	Chisel (cross)		B
3	3363115933	Blunt tool		C

Comments for Page: Working tools

(L)OCAL REMARKS

A | L = 495 mm, LT = 895 mm, Wt = 48.7 kg

L = 19.49 inch, LT = 35.24 inch, Wt = 107.4 lb

B | L = 495 mm, LT = 895 mm, Wt = 51.1 kg

L = 19.49 inch, LT = 35.24 inch, Wt = 112.6 lb

C | L = 495 mm, LT = 895 mm, Wt = 53.5 kg

L = 19.49 inch, LT = 35.24 inch, Wt = 117.9 lb

Any unauthorized use or copying of the contents or any part thereof is prohibited.
This applies in particular to trademarks, model denominations, part numbers, and drawings.