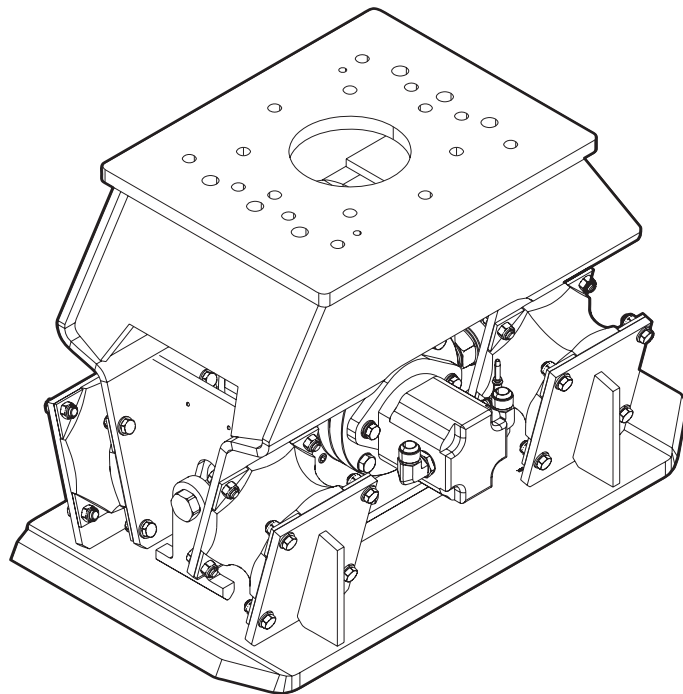


HC 350

Spare parts list Hydraulic compactor

HC 350 s/n BGF100473 -



General information

This spare parts list applies to the following:

Part number	Description
1826101747	Hydraulic compactor HC 350

Use only authorized parts. Any damage or malfunction caused by the use of unauthorized parts is not covered by Warranty or Product Liability. Any unauthorized use or copying of the contents or any part thereof is prohibited. This applies in particular to trademarks, model denominations, part numbers, and drawings.

Instructions for use

This spare parts list contains no safety regulations and is merely intended to assist in the ordering of spare parts.

For information about operating, servicing, or repairing, the relevant Safety and operating instructions must be consulted at all costs.

Please observe the safety instructions listed in the relevant Safety and operating instructions!

Instructions for ordering

It is essential to indicate the serial number of the hydraulic attachment when ordering spare parts!

Please note the full identification number of your hydraulic attachment.

Determine the quantity of individual parts which are required and need to be ordered. The order must indicate the following details:

- full identification code of the hydraulic attachment
- required quantity
- part number
- description

Service, repair and wear part kits

Kit list 1

Mechanical

Hydraulic compactor 3

Tightening torques 6

Dimensions 9

Options / accessories

Hydraulic hoses 10

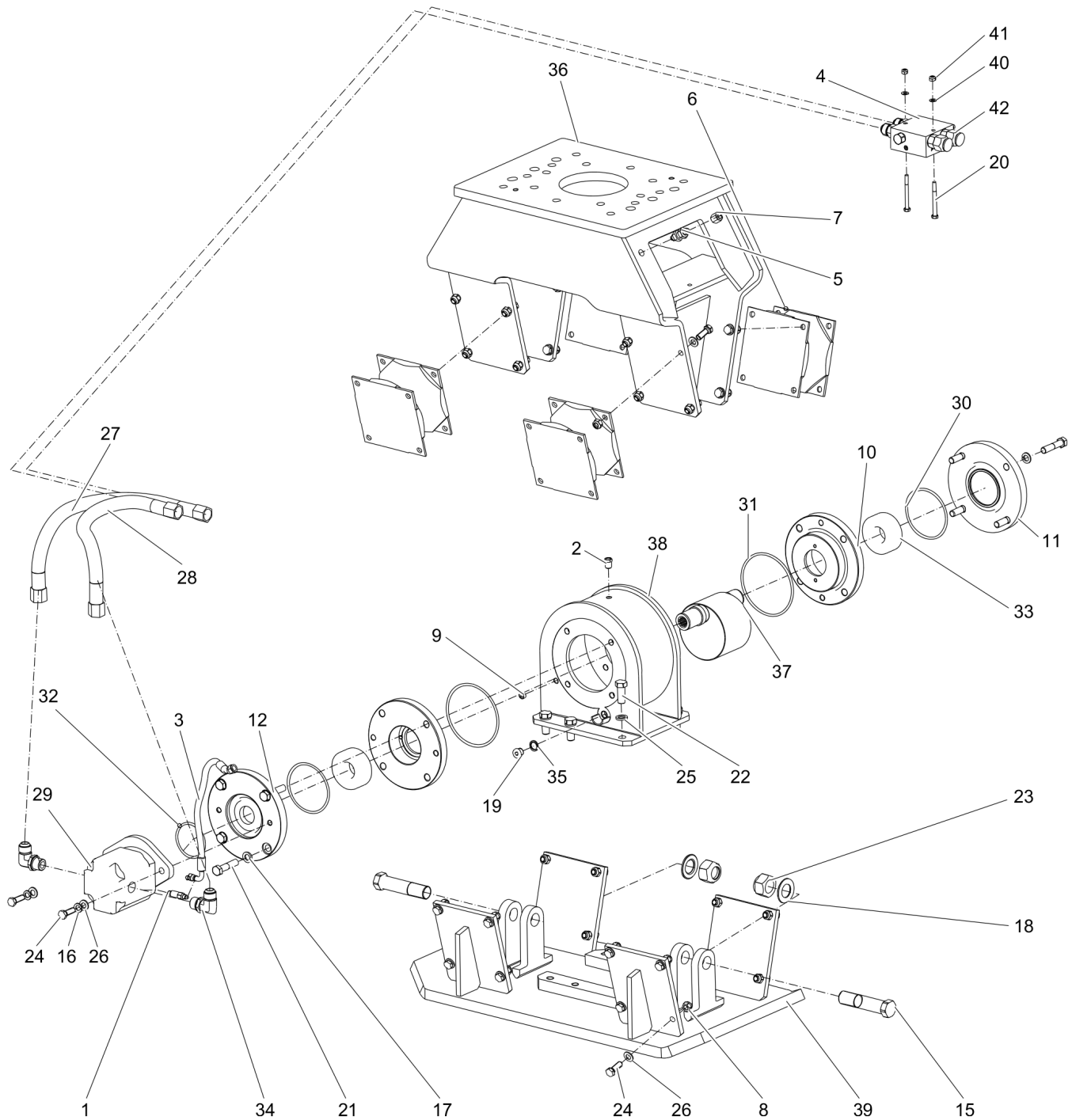
Optional equipment part 1 13

Optional equipment part 2 15

Service, repair and wear part kits Kit list

NO EXPLODED VIEW
AVAILABLE
FOR THIS BOM

Item	Part No.	Name	Qty	L
KIT	3376696231	Label kit	1	
KIT	3376690036	Seal kit (Hydraulic motor)	1	
KIT	3376690032	Rubber isolator kit	1	
6	3376100755	Rubber isolator	4	
8	0291111200	Lock nut M12	32	
24	0147140203	Screw	32	
26	0301235800	Flat washer	32	
KIT	3376100997	Seal kit (Rotator)	1	

Mechanical Hydraulic compactor

Refer to Parts Online for the most up to date information. The printed information might be outdated.

Thu Mar 16 08:06:07 UTC 2017

Item	Part No.	Name	Qty	L
1	3376696146	Adapter	1	
2	3376100779	Vent valve	1	
3	3376101522	Hydraulic hose	1	
4	3376690007	Valve block, female thread 3/4" - 16 UNF	1	
5	3176649600	Fitting	1	
6	3376100755	Rubber isolator	4	
7	3176542900	Cap	1	
8	0291111200	Lock nut M12	32	
9	0686612800	Plug	1	
10	3376696012	Bearing retainer	2	
11	3376696013	Bearing cover	1	
12	3376696011	Bearing cover	1	
15	3376696143	Axle	2	A
16	0333217421	Spring washer	2	
17	0333217422	Spring washer M14	8	
18	0300027486	Washer M30	2	
19	0686371626	Plug, VSTI R 38 - ED	1	
20	0147133603	Hexagon bolt	2	
21	0147144503	Hexagon head bolt M14 x 65 mm 8.8	8	
22	5530879900	Hexagon head bolt M16 x 40 mm 10.9	6	
23	0291112000	Nut M30	2	
24	0147140203	Screw	34	
25	3315019510	Lock washer	6	
26	0301235800	Flat washer	34	
27	3376101486	Hydraulic hose	1	
28	3376101519	Hydraulic hose	1	
29	3376100752	Hydraulic motor	1	
30	0663212018	O-ring 110 x 5 mm 70° IRH (NBR)	2	
31	0663211340	O-ring 140 x 5 mm 70° IRH (NBR)	2	
32	0663212016	O-ring 75 x 5 mm 70° IRH (NBR)	1	
33	0506010022	Bearing	2	
34	3176657100	Fitting 90°, 1 1/16" - 12 UN-2A	2	
35	0661100016	Seal washer	1	
36	3376696406	Outer housing	1	
37	3376690004	Rotor	1	
38	3376696409	Rotor housing	1	
39	3376696403	Tamper plate	1	

Refer to Parts Online for the most up to date information. The printed information might be outdated.

Thu Mar 16 08:06:07 UTC 2017

Item	Part No.	Name	Qty	L
40	0301233500	Flat washer	2	
41	0291111000	Locknut	2	
42	0570501040	Fitting 1 1/16" - 12 / 3/4" - 16 UNF-2A	4	

Comments for Page: Hydraulic compactor

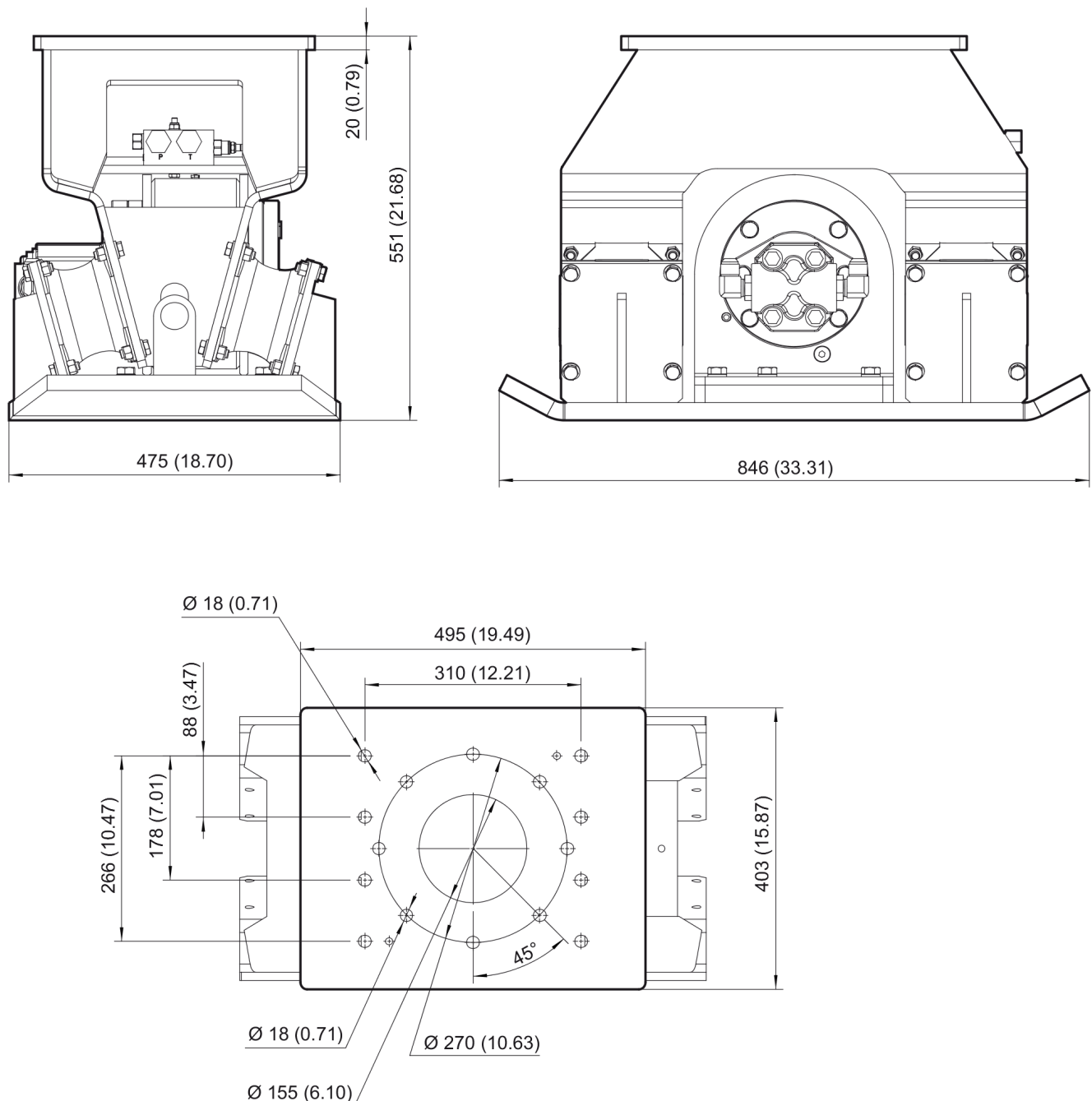
A | with items 18 and 23

This page intentionally left blank

Mechanical Tightening torques

NO EXPLODED VIEW
AVAILABLE
FOR THIS BOM

Item	Part No.	Name	Qty	L
2	-	Open-ended wrench - pretighten finger tight, then 1 - 2 turns tighten with the open-ended wrench	-	
8	-	Open-ended wrench - 93 Nm (69 ft lbf)	-	
9	-	Allen key - pretighten finger tight, then 1 - 2 turns tighten with the Allen key	-	
19	-	Allen key - 30.5 Nm (22.5 ft lbf)	-	
20	-	Open-ended wrench - 20 Nm (15 ft lbf)	-	
21	-	Open-ended wrench - 148 Nm (109 ft lbf)	-	
22	-	Open-ended wrench - 230 Nm (170 ft lbf)	-	
24	-	Open-ended wrench - 93 Nm (69 ft lbf)	-	

Mechanical Dimensions

Refer to Parts Online for the most up to date information. The printed information might be outdated.

Thu Mar 16 08:06:08 UTC 2017

This page intentionally left blank

Options / accessories Hydraulic hoses

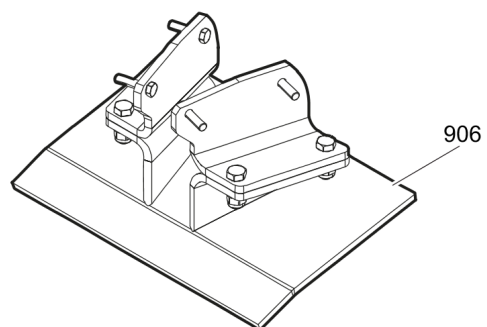
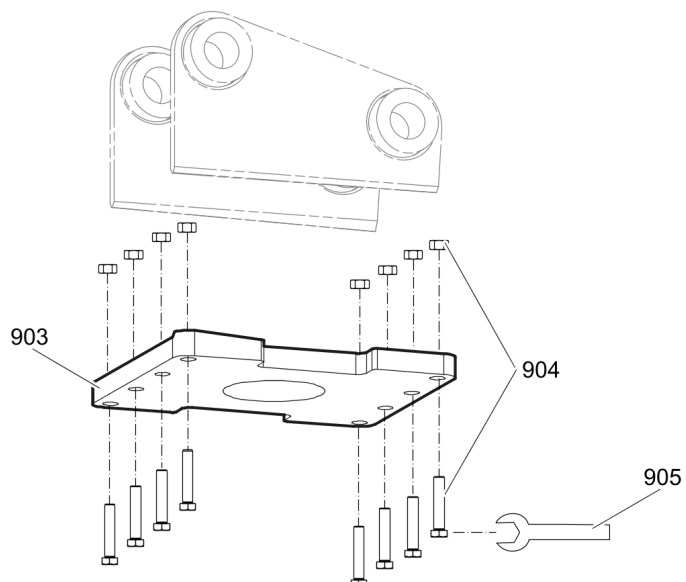
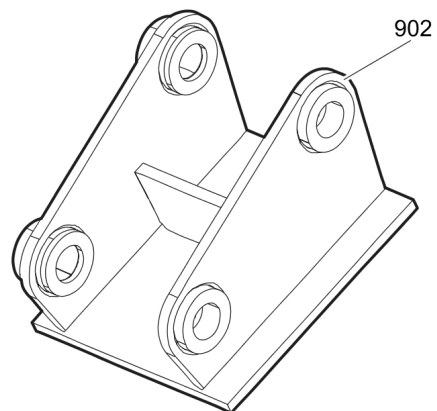
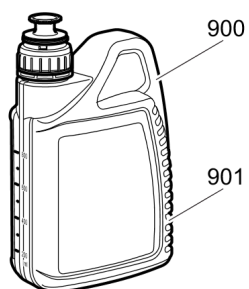
NO EXPLODED VIEW
AVAILABLE
FOR THIS BOM

Item	Part No.	Name	Qty	L
Not Shown	-	Pressure line / tank line		
-	3361353551	Hydraulic hose, I.D. 12 (0.47"), both ends M22 x 1.5, conical seal 24°, length 1750 mm (69 in.)	2	
-	3363085946	Hydraulic hose, I.D. 12 (0.47"), both ends M22 x 1.5, conical seal 24°, length 2100 mm (83 in.)	2	
Not Shown	-	Accessories to the hydraulic hoses		
-	3363098286	Fitting set	1	
Not Shown	-	Drainage for hydraulic motor		
-	3363119625	Hydraulic hose, I.D. 8 (3/8"), M20 x 1.5 conical seal 24° - 9/16-18 JIC, length 2800 mm (110 in.)	1	

Comments for Page: Hydraulic hoses

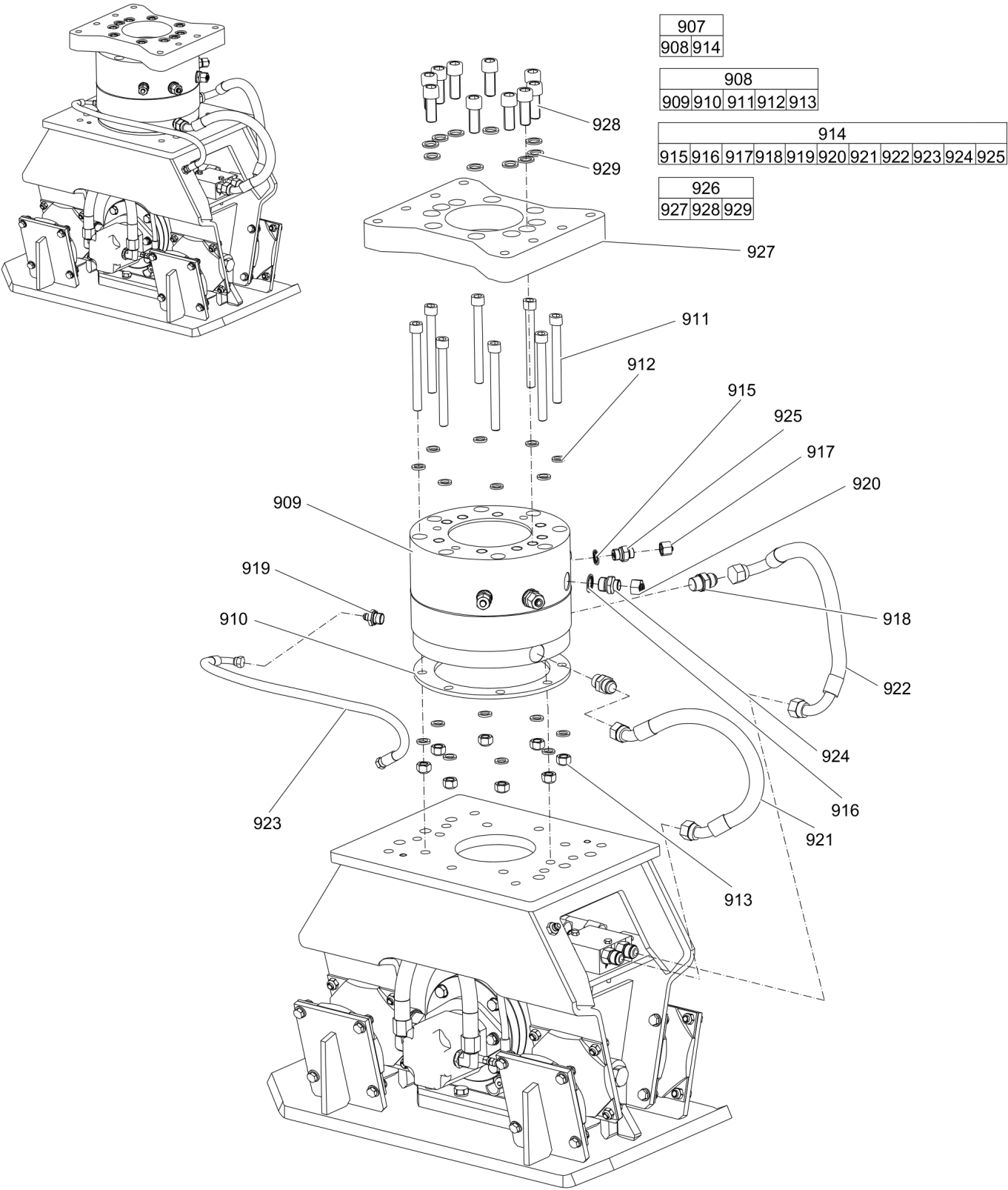
Note

Remove the genuine fittings carrier side from the valve block before mounting the fitting set.

Options / accessories Optional equipment part 1

Item	Part No.	Name	Qty	L
900	9234001203	Cobra & compactor Impact-OIL 1L	1	
901	9234001405	Cobra Compactor Impact-Oil, 20x1 L (0.22 gal) (0.26 US gal)	1	
902		Adapter plate matching the carrier. Consult the Atlas Copco Customer Center/Dealer in your area.	1	
903	3315295100	Base plate	1	
904	3315296490	Bolt kit	1	
905	3360430655	Open end spanner (24/27 mm)	1	
906	3376696108	Backfill blade kit	1	

Options / accessories Optional equipment part 2



Item	Part No.	Name	Qty	L
907(908-925)	1826104829	Rotation kit	1	
908(909-913)	1826101823	Rotation unit	1	
909		Rotator	1	
910		Spacer	1	
911		Allen screw	8	
912		Lock washer	16	
914(915-925)	3376696437	Hose/Fitting kit	1	
913		Hexagon nut, M16 A2K	8	
915		Washer	3	
916		Seal washer	2	
917		Plug	3	
918		Fitting	2	
919		Fitting	1	
920		Plug	2	
921		Hydraulic hose	1	
922		Hydraulic hose	1	
923		Hydraulic hose	1	
924		Fitting	2	
925		Fitting	3	
926(927-929)	3363115683	Sandwich plate complete	1	
927		Sandwich plate	1	
928	3360026782	Allen screw	10	
929	3361850748	Pair of lock washers	10	

Any unauthorized use or copying of the contents or any part thereof is prohibited.
This applies in particular to trademarks, model denominations, part numbers, and drawings.

