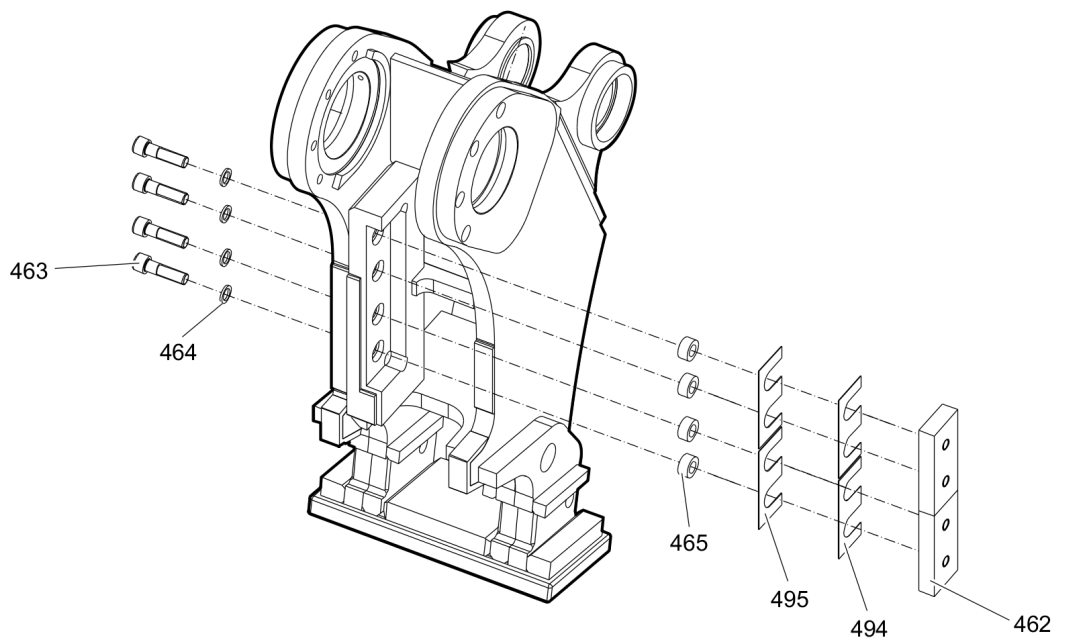
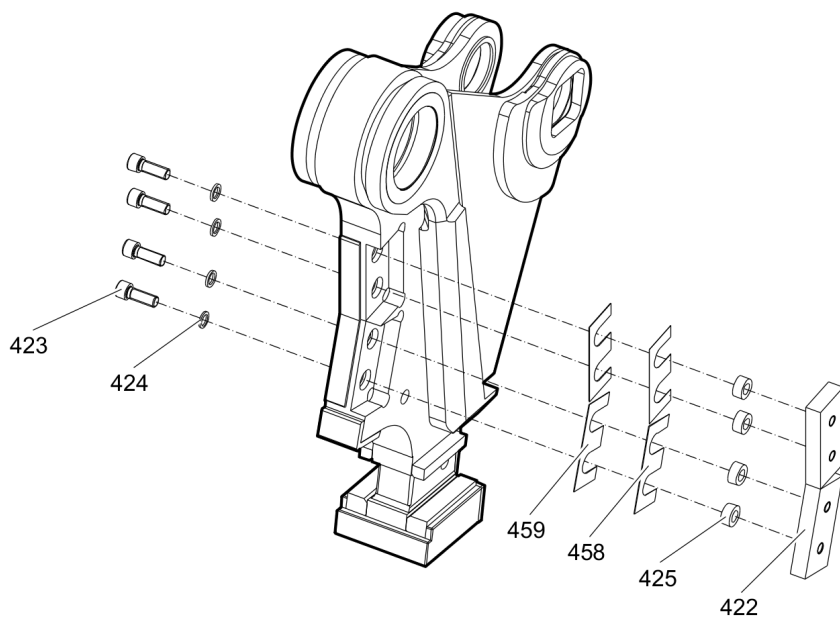


Maintenance kit

Blades

Cutter blades kit 3363121227



Item	Part No.	Name	Qty	L
422	3363086479	Cutter blade	2	
423	3362328057	Allen screw	4	A
424	3361850748	Pair of lock washers	4	
425	3363035107	Lock ring	4	
458	3363088149	Shim	2	B
459	3363087607	Shim	2	C
462	3363086479	Cutter blade	2	
463	3363070085	Allen screw	4	A
464	3361850748	Pair of lock washers	4	
465	3363035107	Lock ring	4	
494	3363088149	Shim	2	B
495	3363087607	Shim	2	C

Comments for Page: Cutter blades kit 336121227

This document contains no safety instructions. For information on operating, servicing or repairing the hydraulic attachment, the relevant Safety and operating instructions must be consulted at all costs. Please observe the safety instructions listed in the relevant Safety and operating instructions.

A | tightening torque 530 + 30 Nm (391 + 22 ft lbf)

B | 0.2 mm (0.01 in.) thick, as required

C | 1.0 mm (0.04 in.) thick, as required

Any unauthorized use or copying of the contents or any part thereof is prohibited.
This applies in particular to trademarks, model denominations, part numbers, and
drawings.

© 2018 Construction Tools GmbH | No. 3390798801 | 2018-04-12