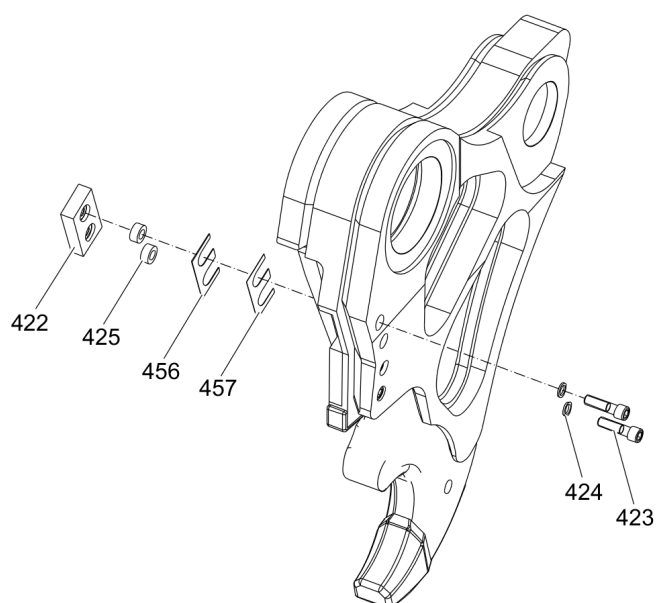


## Maintenance kit Blades



Item	Part No.	Name	Qty	L
422	3363122359	Cutter blade	4	
423	3363070085	Allen screw	8	A
424	3361850748	Pair of lock washers	8	
425	3363035107	Lock ring	8	
456	3363122330	Shim	4	B
457	3363122331	Shim	4	C

Comments for Page: Cutter blades kit 3363124644

A | Tightening torque 530 + 30 Nm (391 + 22 ft lbf)

B | 0.2 mm (0.01 in.) thick, as required

C | 1.0 mm (0.04 in.) thick, as required

This document contains no safety instructions. For information on operating, servicing or repairing, the relevant Safety and operating instructions must be consulted at all costs. Please observe the safety instructions listed in the relevant Safety and operating instructions.

Any unauthorized use or copying of the contents or any part thereof is prohibited.  
This applies in particular to trademarks, model denominations, part numbers, and drawings.

© 2021 Construction Tools GmbH | No. 3390819301 | 2021-02-12