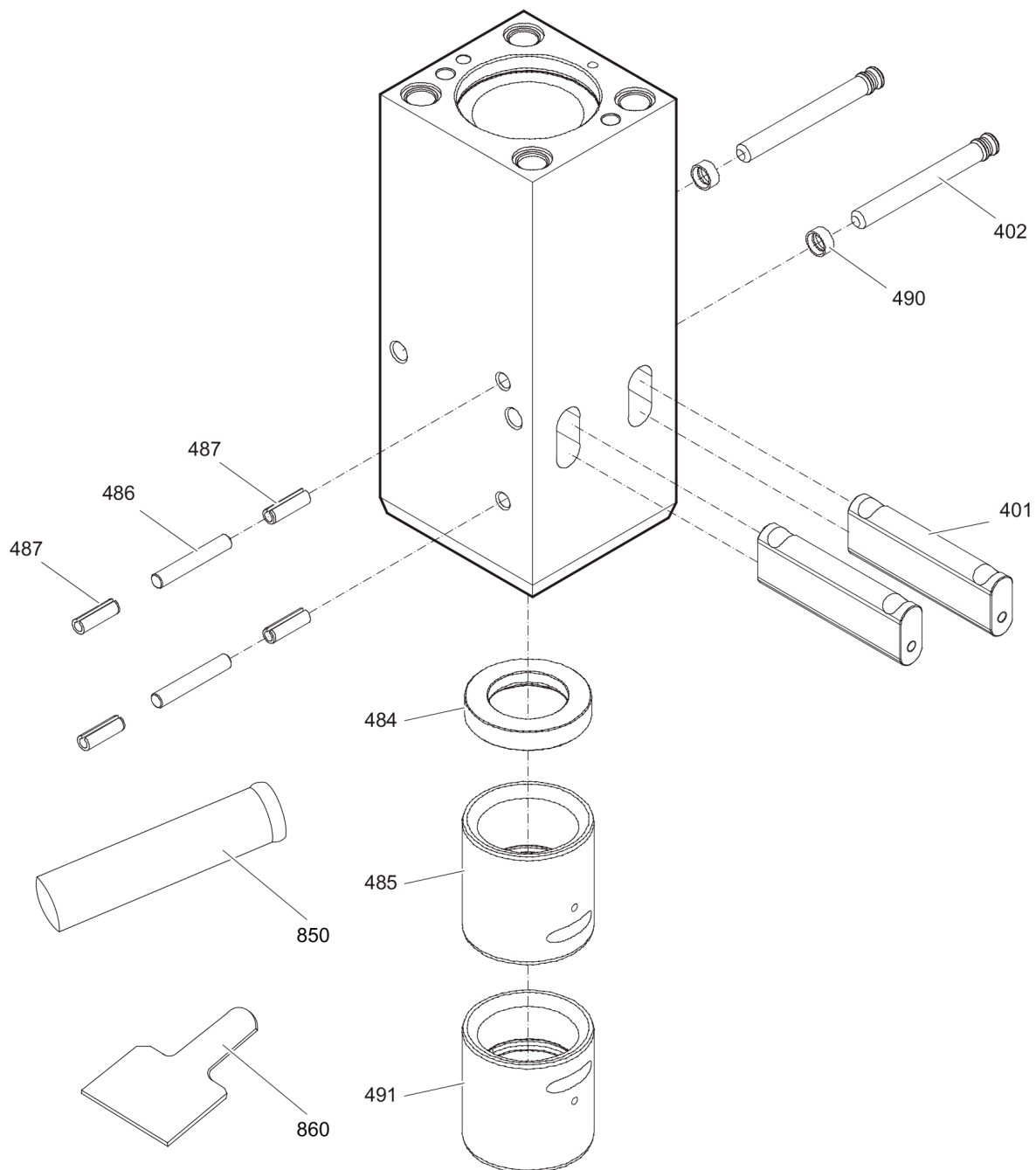


Maintenance kit

Lower breaker part (steel wear bush)

Lower breaker part kit 3363 1034 84



| Item | Part No. | Name | Qty | L |
|------|------------|---------------------------------------|-----|---|
| 401 | 3363104779 | Retainer bar | 2 | |
| 402 | 3363104781 | Bolt | 2 | |
| 484 | 3363092889 | Impact ring | 1 | |
| 485 | 3363092891 | Wear bush | 1 | |
| 486 | 3362261509 | Pin | 2 | |
| 487 | 3363091201 | Spring dowel sleeve | 4 | |
| 490 | 3363033043 | Locking bush | 2 | |
| 491 | 3363104777 | Wear bush (steel) | 1 | A |
| 850 | 3315038100 | Chisel paste cartridge, 400 g 0.88 lb | 1 | |
| 860 | 3362235293 | Test gauge lower wear bush | 1 | |

Comments for Page: Lower breaker part kit 3363 1034 84

This document contains no safety instructions. For information on operating, servicing or repairing the hydraulic attachment, the relevant Safety and operating instructions must be consulted at all costs. Please observe the safety instructions listed in the relevant Safety and operating instructions .

(L)OCAL REMARKS

A | steel

Any unauthorized use or copying of the contents or any part thereof is prohibited.
This applies in particular to trademarks, model denominations, part numbers, and
drawings.

© 2018 Construction Tools GmbH | No. 3390740801 | 2018-02-05