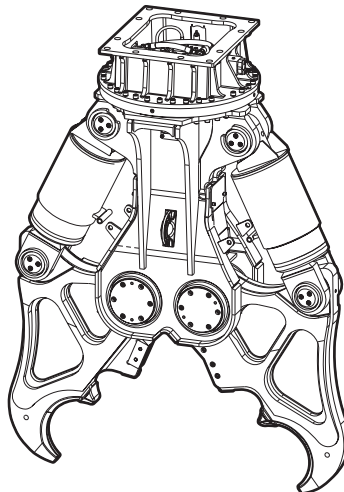


CB 5500

Spare parts list

Hydraulic concrete buster

CB 5500 s/n DEQ209093 -



General information

This spare parts list applies to the following:

Part number	Description
3363121740	Hydraulic concrete buster CB 5500
3363124933	Hydraulic concrete buster CB 5500 with HATCON 3G
3363126960	Hydraulic concrete buster CB 5500 with HATCON LTE

Use only authorized parts. Any damage or malfunction caused by the use of unauthorized parts is not covered by Warranty or Product Liability. Any unauthorized use or copying of the contents or any part thereof is prohibited. This applies in particular to trademarks, model denominations, part numbers, and drawings.

Instructions for use

This spare parts list contains no safety regulations and is merely intended to assist in the ordering of spare parts.

For information about operating, servicing, or repairing, the relevant Safety and operating instructions must be consulted at all costs.

Please observe the safety instructions listed in the relevant Safety and operating instructions!

Instructions for ordering

It is essential to indicate the serial number of the hydraulic attachment when ordering spare parts!

Please note the full identification number of your hydraulic attachment.

Determine the quantity of individual parts which are required and need to be ordered. The order must indicate the following details:

- full identification code of the hydraulic attachment
- required quantity
- part number
- description

Service, repair and wear part kits

Hose kit (casing)	1
Cutter blades kit	3
Seal kit (Hydraulic cylinder)	5
Kit list	7

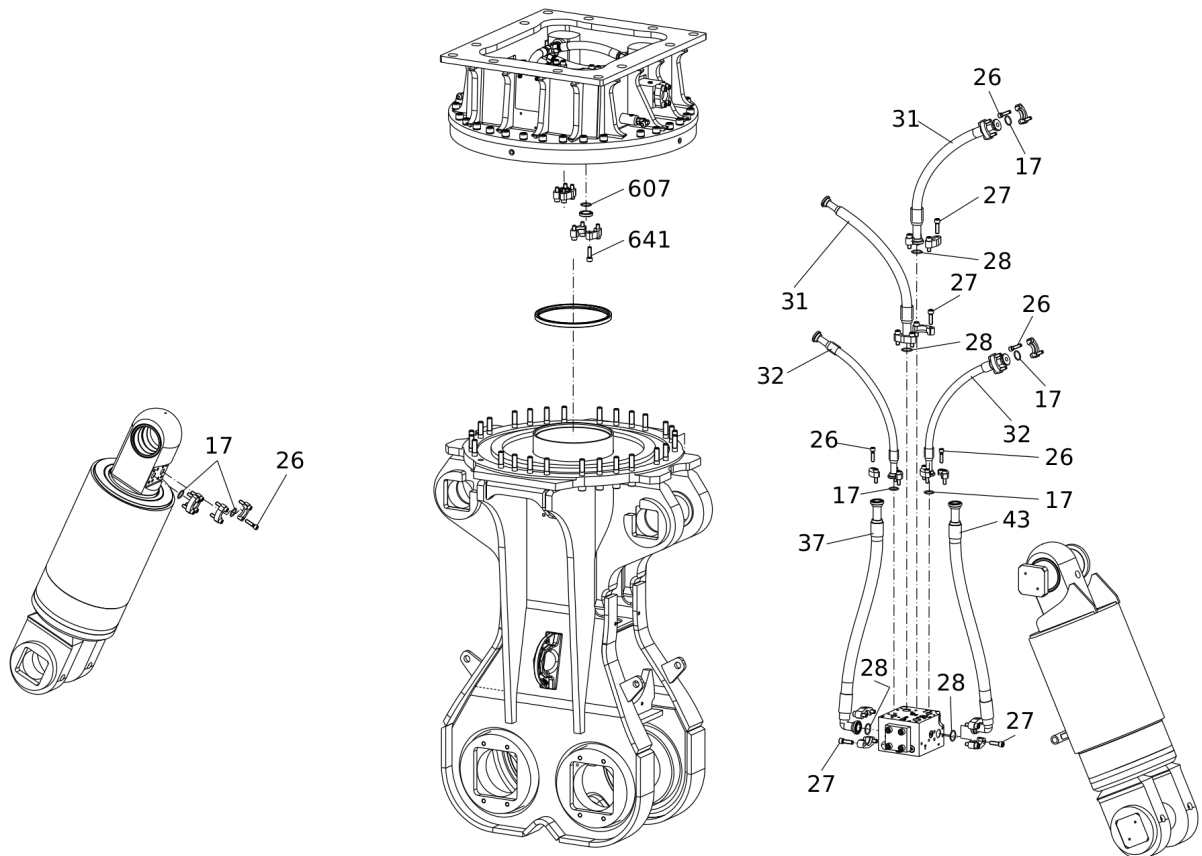
Mechanical

Hydraulic concrete buster	9
Hydraulic cylinder	12
Main bolts	15
Cutter jaw	17
Upper part complete	19
Rotary transmission	22
HATCON	25
Tightening torques	27
Dimensions	29

Options / accessories

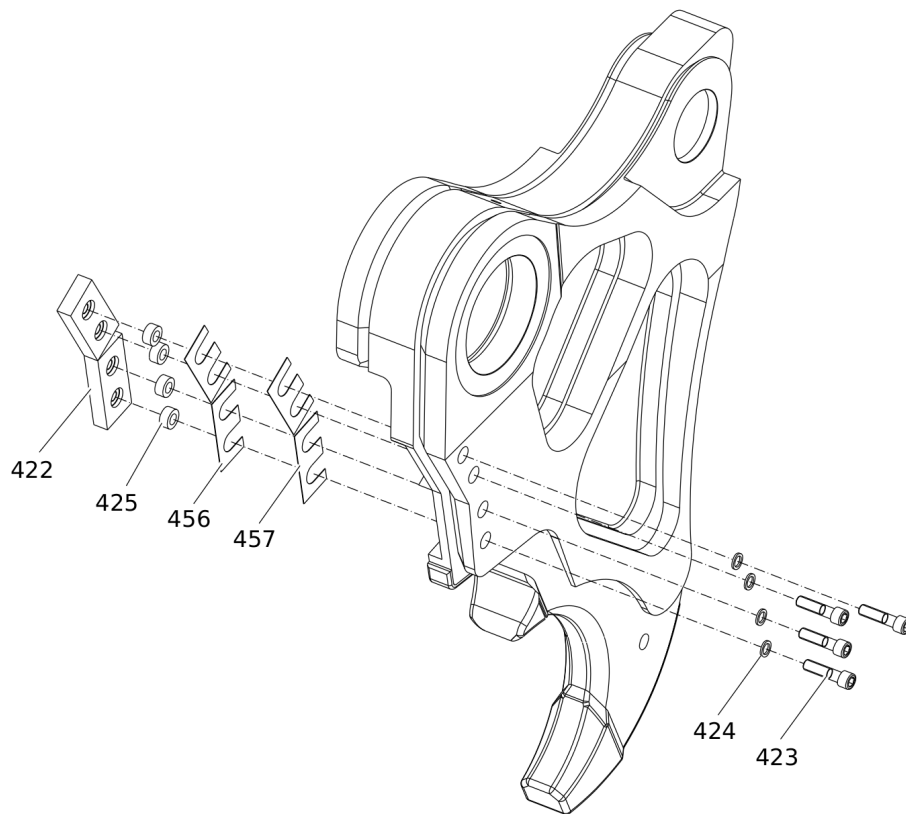
Hydraulic hoses	30
Optional equipment	33

Service, repair and wear part kits Hose kit (casing)



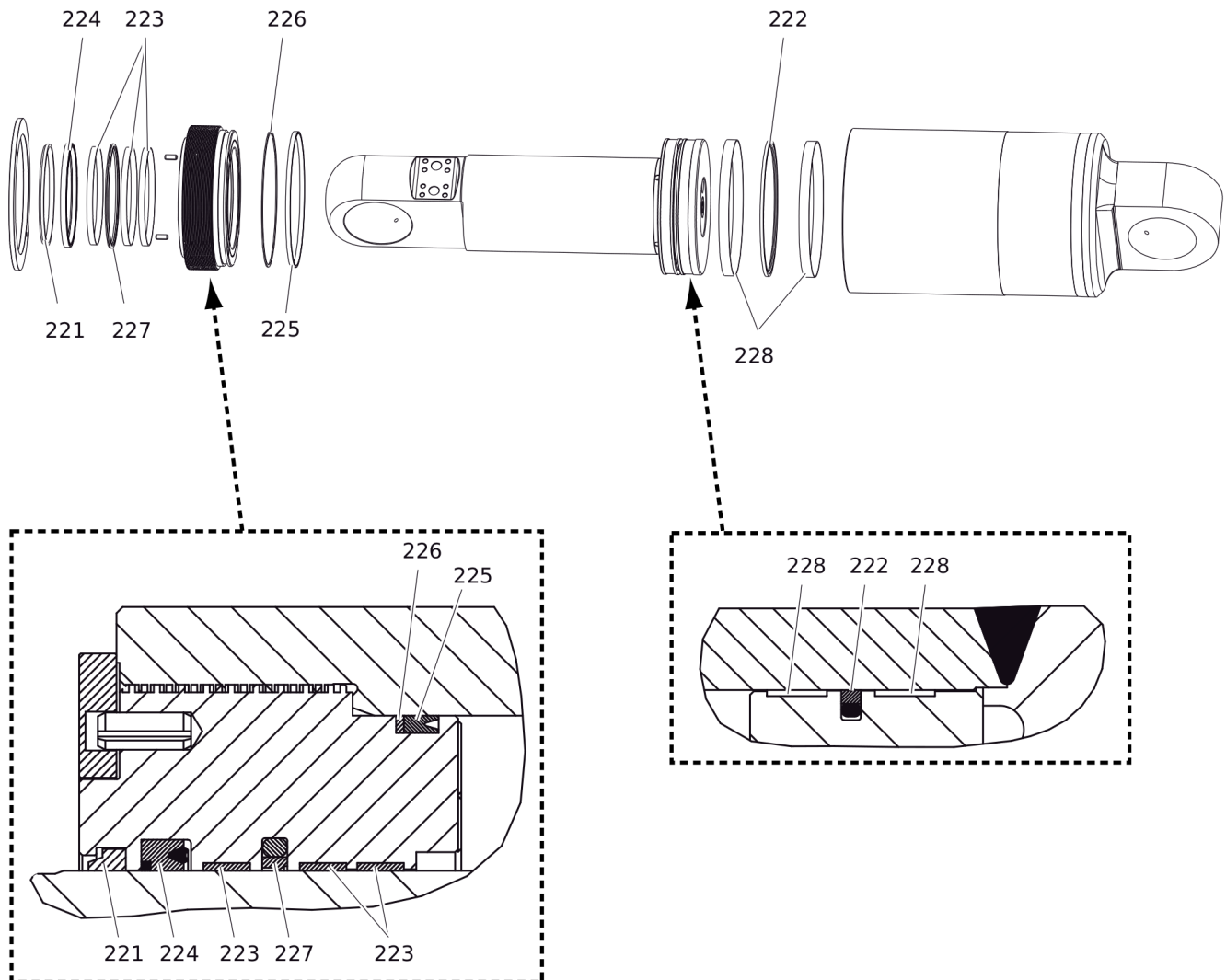
Item	Part No.	Name	Qty	L
KIT	3363123234	HOSE KIT (casing)	1	
17	3360314370	O-RING	6	
26	3360026513	ALLEN SCREW	24	
27	3363034274	ALLEN SCREW	16	
28	3360314372	O-RING	4	
31	3363121831	HYDRAULIC HOSE	2	
32	3363121832	HYDRAULIC HOSE	2	
37	3363121833	HYDRAULIC HOSE	1	
43	3363123139	HYDRAULIC HOSE	1	
607	3360314372	O-RING	2	
641	3363034274	ALLEN SCREW	8	

Service, repair and wear part kits Cutter blades kit



Item	Part No.	Name	Qty	L
KIT	3363123205	CUTTER BLADES KIT	1	
422	3363086479	CUTTER BLADE	4	
423	3360106098	ALLEN SCREW	8	
424	3361850748	PAIR OF LOCK WASHERS	8	
425	3363035107	LOCK RING	8	
456	3363088149	SHIM	4	
457	3363099491	SPACER RING	4	C

Service, repair and wear part kits Seal kit (Hydraulic cylinder)



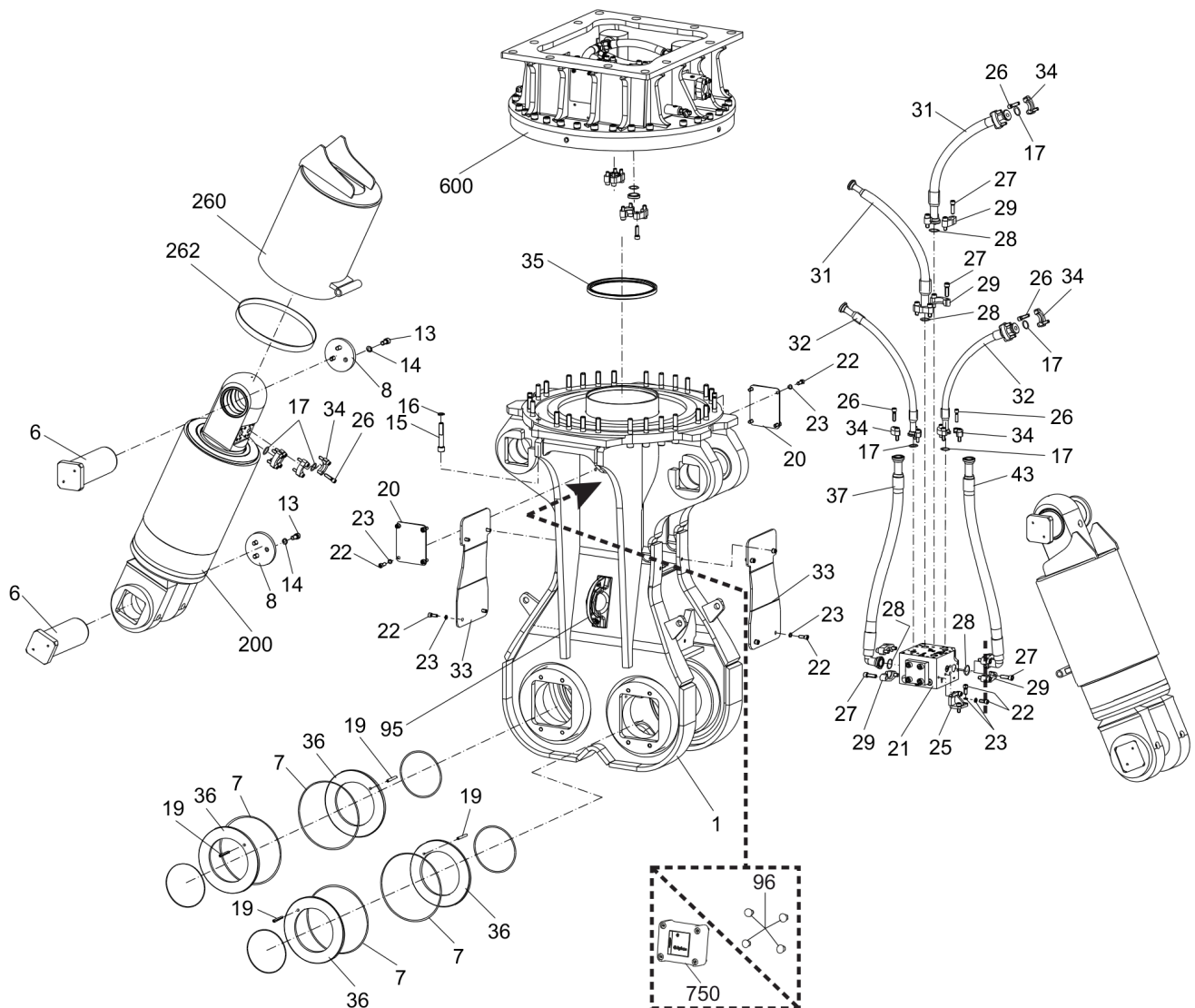
Item	Part No.	Name	Qty	L
KIT	3363103698	SEAL KIT (Hydraulic cylinder)	1	
221		WIPER	1	
222		SEAL	1	
223		GUIDE RING	3	
224		SEAL	1	
225		O-RING	1	
226		BACK-UP RING	1	
227		SEAL	1	
228		GUIDE RING	2	

Service, repair and wear part kits Kit list

NO EXPLODED VIEW
AVAILABLE
FOR THIS BOM

Item	Part No.	Name	Qty	L
KIT	3363123147	LABEL KIT	1	
KIT	3363126309	SEAL KIT (Hydraulic motor and housing)	1	
707(708-711)	3363083066	SEAL KIT (Rotary transmission)	1	
708		V-RING	1	
709		O-RING	1	
710		SLIDE RING	1	
711		SEAL	2	
KIT	3363106314	SEAL KIT (Rapid movement valve)	1	

Mechanical Hydraulic concrete buster



Refer to the DocMine web page for most up-to-date information. The printed information might be outdated.

Thu Nov 14 12:18:21 UTC 2024

Item	Part No.	Name	Qty	L
1	3363121733	HOUSING	1	A
6	3363121720	BOLT	4	
7	3366605829	O-RING	4	
8	3363114744	CAP	4	
13	3362328113	ALLEN SCREW	12	
14	3361333703	PAIR OF LOCK WASHERS	12	
15	3360106101	ALLEN SCREW	28	
16	3361850748	PAIR OF LOCK WASHERS	28	
17	3360314370	O-RING	6	
19	3363121828	SPRING DOWEL SLEEVE	4	
20	3362262371	CAP	2	
21	3363099407	RAPID MOVEMENT VALVE	1	
22	3360103751	ALLEN SCREW	24	
23	3361850596	PAIR OF LOCK WASHERS	24	
25	3363105487	HOLDER	2	
26	3360026513	ALLEN SCREW	24	
27	3363034274	ALLEN SCREW	16	
28	3360314372	O-RING	4	
29	3360992488	FLANGE HALF	8	
31	3363121831	HYDRAULIC HOSE	2	
32	3363121832	HYDRAULIC HOSE	2	
33	3363121842	PLATE	2	
34	3361853208	FLANGE HALF	12	
35	3363070083	SEAL	1	
36	3363121738	RING	4	
37	3363121833	HYDRAULIC HOSE	1	
43	3363123139	HYDRAULIC HOSE	1	
95	3363111995	LIFTING EYE	2	B
96	3315439145	PROTECTIVE PLUG HATCON	4	C
200	3363123204	HYDRAULIC CYLINDER, complete	2	D
260	3363121838	PROTECTIVE PISTON ROD SHEATH, complete	2	E
262	3363099497	GUIDE STRIP	2	
600	3363115332	UPPER PART, complete	1	D
750		HATCON	1	F

Comments for Page: Hydraulic concrete buster

A | with item 95

B | professional welding process necessary

Refer to the DocMine web page for most up-to-date information. The printed information might be outdated.

Thu Nov 14 12:18:21 UTC 2024

C | only for hydraulic concrete busters without HATCON

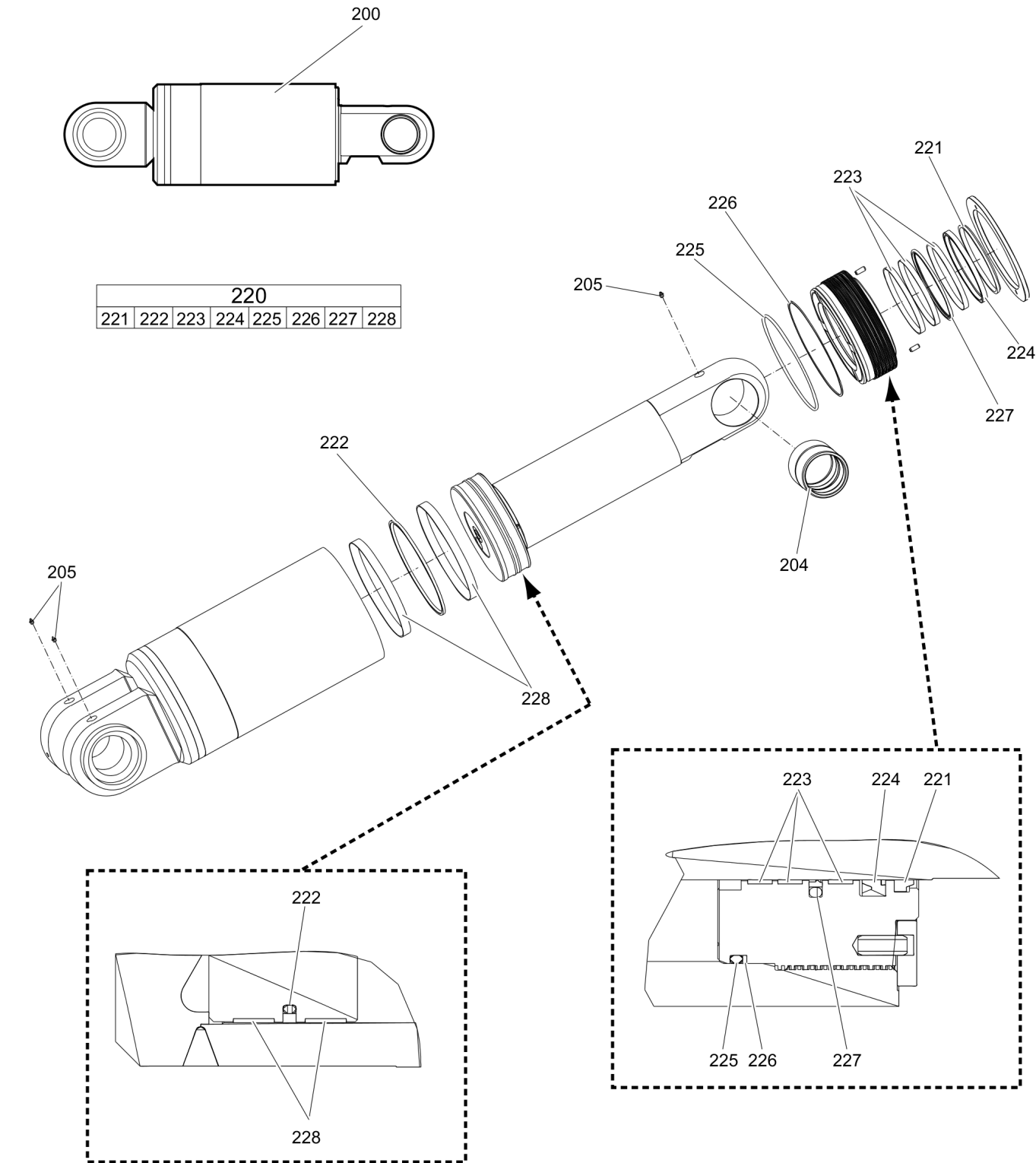
D | see separate chapter

E | with item 262

F | only for hydraulic concrete busters with HATCON / see separate chapter

This page intentionally left blank

Mechanical Hydraulic cylinder



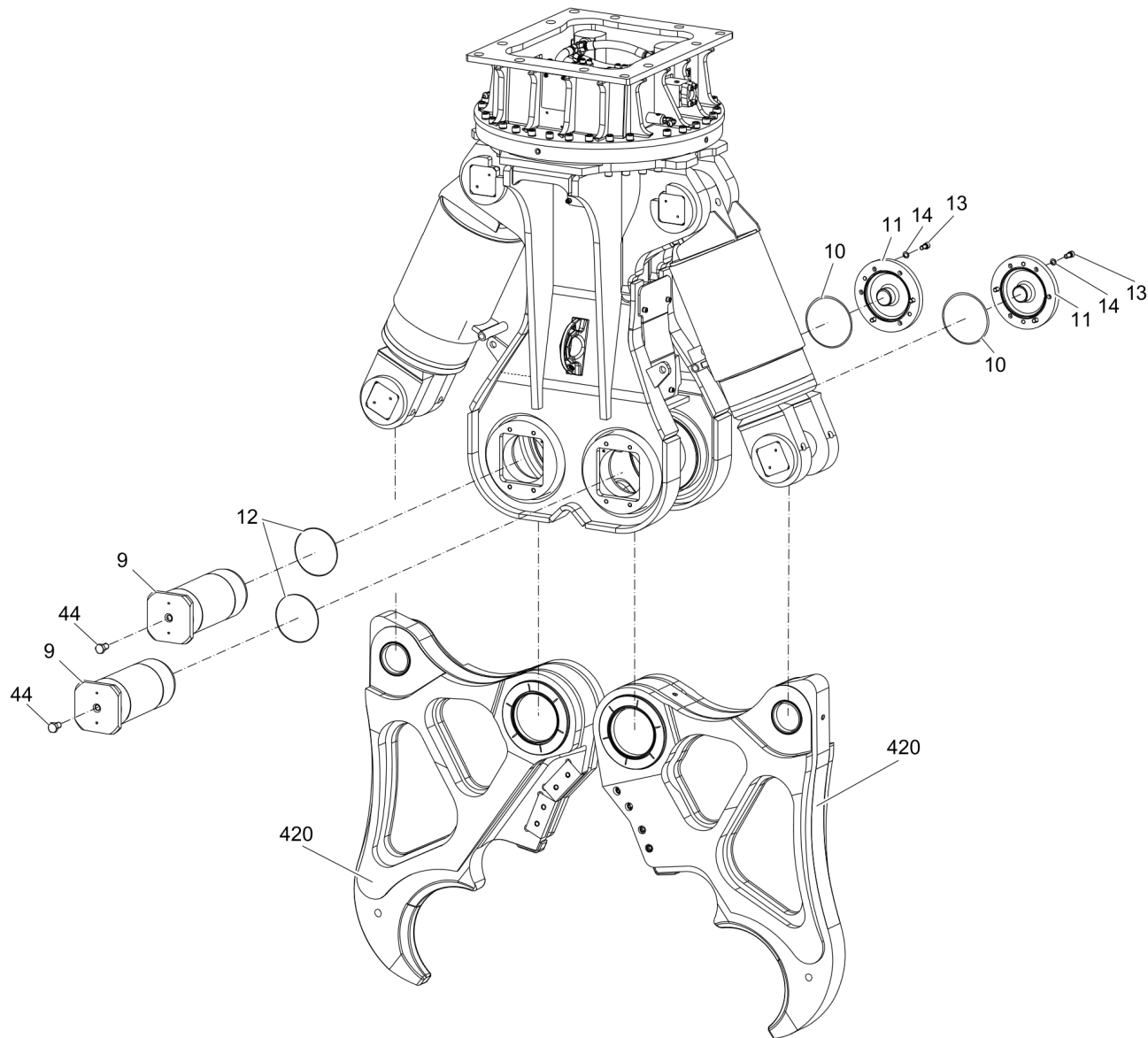
Item	Part No.	Name	Qty	L
200	3363123204	HYDRAULIC CYLINDER, complete	2	A
204	3363109929	CLAMPING BUSH	2	
205	3360209834	GREASE NIPPLE	6	
220(221-228)	3363103698	SEAL KIT (Hydraulic cylinder)	2	
221		WIPER	1	
222		SEAL	1	
223		GUIDE RING	3	
224		SEAL	1	
225		O-RING	1	
226		BACK-UP RING	1	
227		SEAL	1	
228		GUIDE RING	2	

Comments for Page: Hydraulic cylinder

(L)OCAL REMARKS

A | with item 204 - 228

Mechanical Main bolts

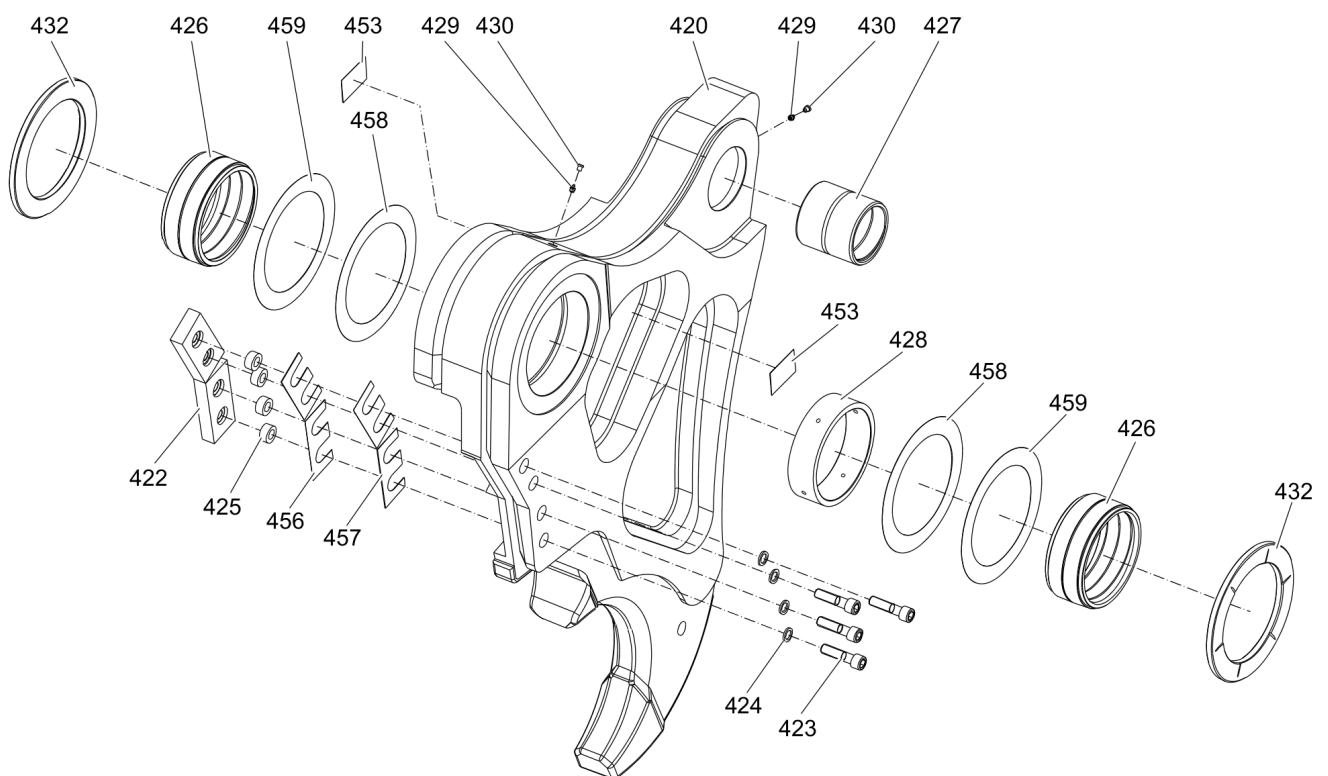


Item	Part No.	Name	Qty	L
9	3363121736	Bolt	2	
10	3361031951	O-RING	2	
11	3363118185	CAP	2	
12	3363031795	O-RING	2	
13	3362328113	ALLEN SCREW	6	
14	3361333703	PAIR OF LOCK WASHERS	6	
44	3363091095	HEXAGON HEAD SCREW	2	
420	3363123042	CUTTER JAW	2	A

Comments for Page: Main bolts

A | see separate chapter

Mechanical Cutter jaw



Refer to the DocMine web page for most up-to-date information. The printed information might be outdated.

Thu Nov 14 12:18:26 UTC 2024

Item	Part No.	Name	Qty	L
420	3363123042	CUTTER JAW	2	A
422	3363086479	CUTTER BLADE	4	
423	3360106098	ALLEN SCREW	8	
424	3361850748	PAIR OF LOCK WASHERS	8	
425	3363035107	LOCK RING	8	
426	3363118617	BEARING BUSH	4	
427	3363121532	BEARING BUSH	2	
428	3363121533	SPACER RING	2	
429	3360209834	GREASE NIPPLE	4	
430	3363087600	CAP	4	
432	3363099495	WEAR RING	4	
453	3362268751	LABEL TIGHTENING TORQUE	4	B
456	3363088149	SHIM	4	C
457	3363087607	SHIM	4	D
458	3363099493	SPACER RING	4	E
459	3363099491	SPACER RING	4	C

Comments for Page: Cutter jaw

A | with item 422 - 453

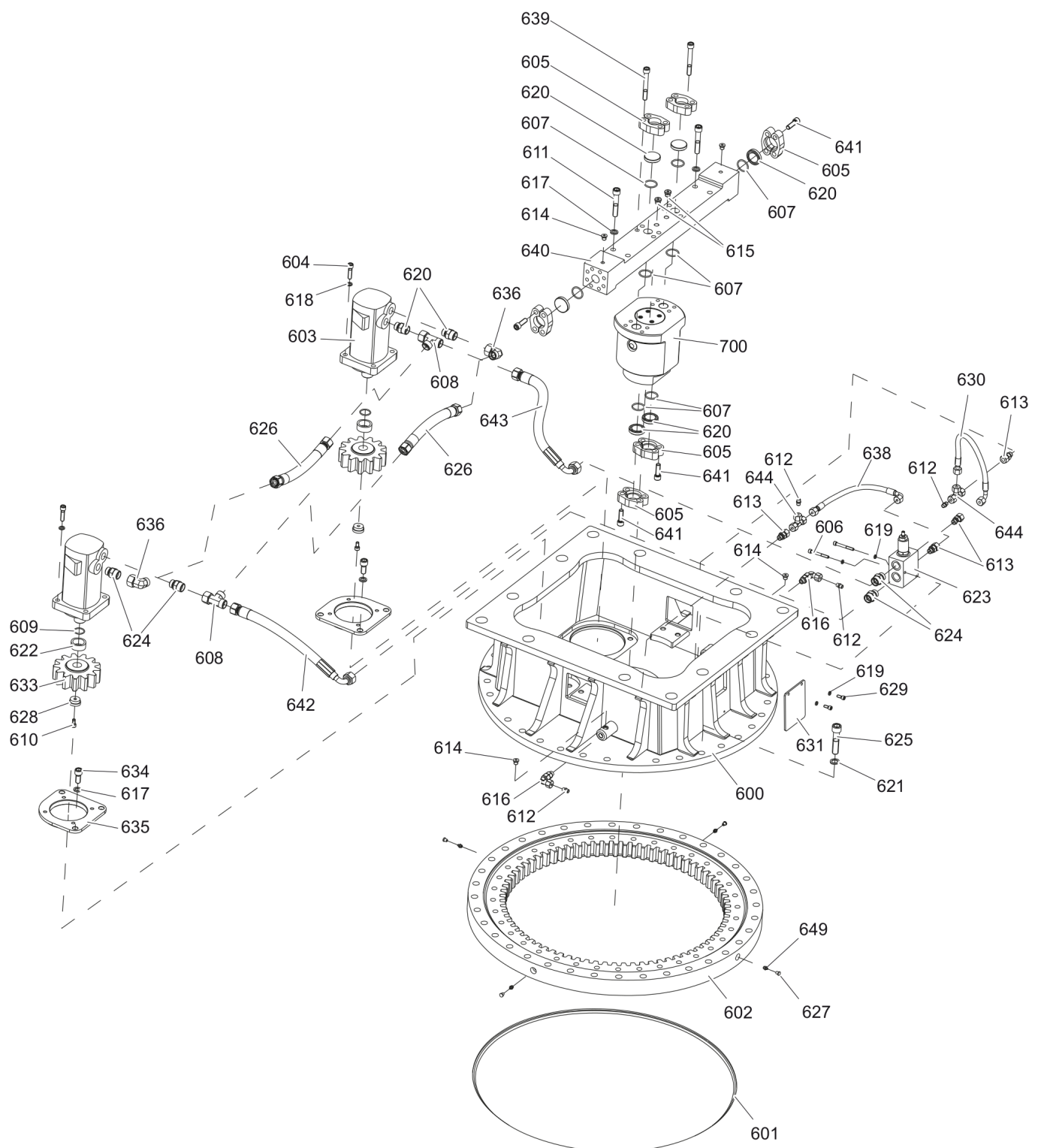
B | German/English

C | 0.2 mm (0.01 in.) thick, as required

D | 1.0 mm (0.04 in.) thick, as required

E | 0.5 mm (0.02 in.) thick, as required

Mechanical Upper part complete



Refer to the DocMine web page for most up-to-date information. The printed information might be outdated.

Thu Nov 14 12:18:27 UTC 2024

Item	Part No.	Name	Qty	L
600	3363115332	UPPER PART, complete	1	A
601	3363129330	SEAL	1	
602	3363097139	FOUR POINT BEARING	1	
603	3363098967	HYDRAULIC MOTOR	2	
604	3360026513	ALLEN SCREW	8	
605	3360992488	FLANGE HALF	12	
606	3360103738	ALLEN SCREW	2	
607	3360314372	O-RING	8	
608	3363113033	FITTING	2	
609	3360313304	O-RING	2	
610	3361031981	ALLEN SCREW	2	
611	3362328096	ALLEN SCREW	4	
612	3360314593	PLUG	4	
613	3360478333	FITTING	4	
614	3360478439	THREADED PLUG	4	
615	3360478440	THREADED PLUG	2	
616	3363091912	FITTING	2	
617	3361333703	PAIR OF LOCK WASHERS	10	
618	3361850596	PAIR OF LOCK WASHERS	8	
619	3361850743	PAIR OF LOCK WASHERS	4	
620	3363031348	BLIND PLATE	6	
621	3361850748	PAIR OF LOCK WASHERS	32	
622	3362265869	RING	2	
623	3363127360	VALVE BLOCK	1	
624	3363113032	FITTING	6	
625	3360106099	ALLEN SCREW	32	
626	3363113042	HYDRAULIC HOSE	2	
627	3363087600	CAP	4	
628	3363088327	RING	2	
629	3360103733	ALLEN SCREW	2	
630	3363083972	HYDRAULIC HOSE	1	
631	3363099489	COVER SHEET	1	
633	3363099597	SPUR PINION	2	
634	3360026641	ALLEN SCREW	6	
635	3363109941	PLATE	2	
636	3363113034	FITTING	2	
638	3363085885	HYDRAULIC HOSE	1	

Refer to the DocMine web page for most up-to-date information. The printed information might be outdated.

Thu Nov 14 12:18:27 UTC 2024

Item	Part No.	Name	Qty	L
639	3363105485	ALLEN SCREW	8	
640	3363105495	CONNECTION PLATE	1	
641	3363034274	ALLEN SCREW	16	
642	3363113423	HYDRAULIC HOSE	1	
643	3363113422	HYDRAULIC HOSE	1	
644	3360314543	FITTING	2	
649	3360209834	GREASE NIPPLE	4	
700	3363105471	ROTARY TRANSMISSION	1	B

Comments for Page: Upper part complete

A | with item 602 - 700

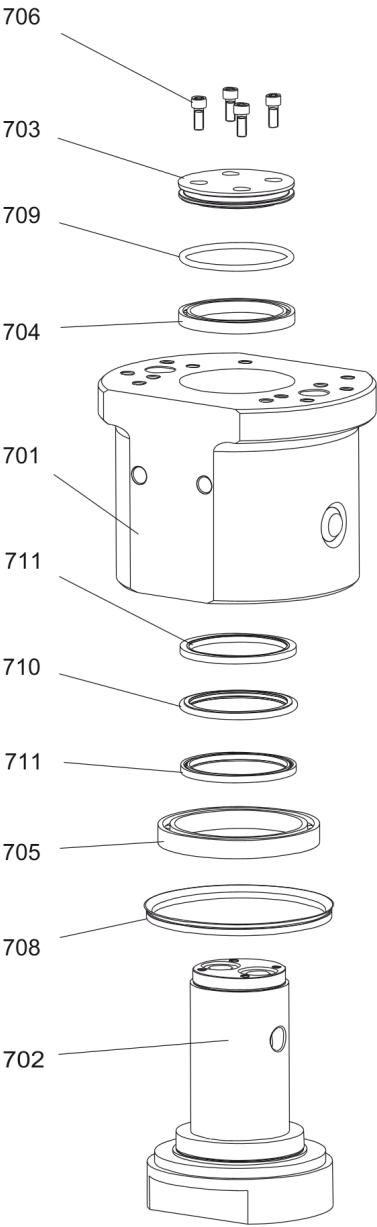
B | see separate chapter

This page intentionally left blank

Mechanical Rotary transmission

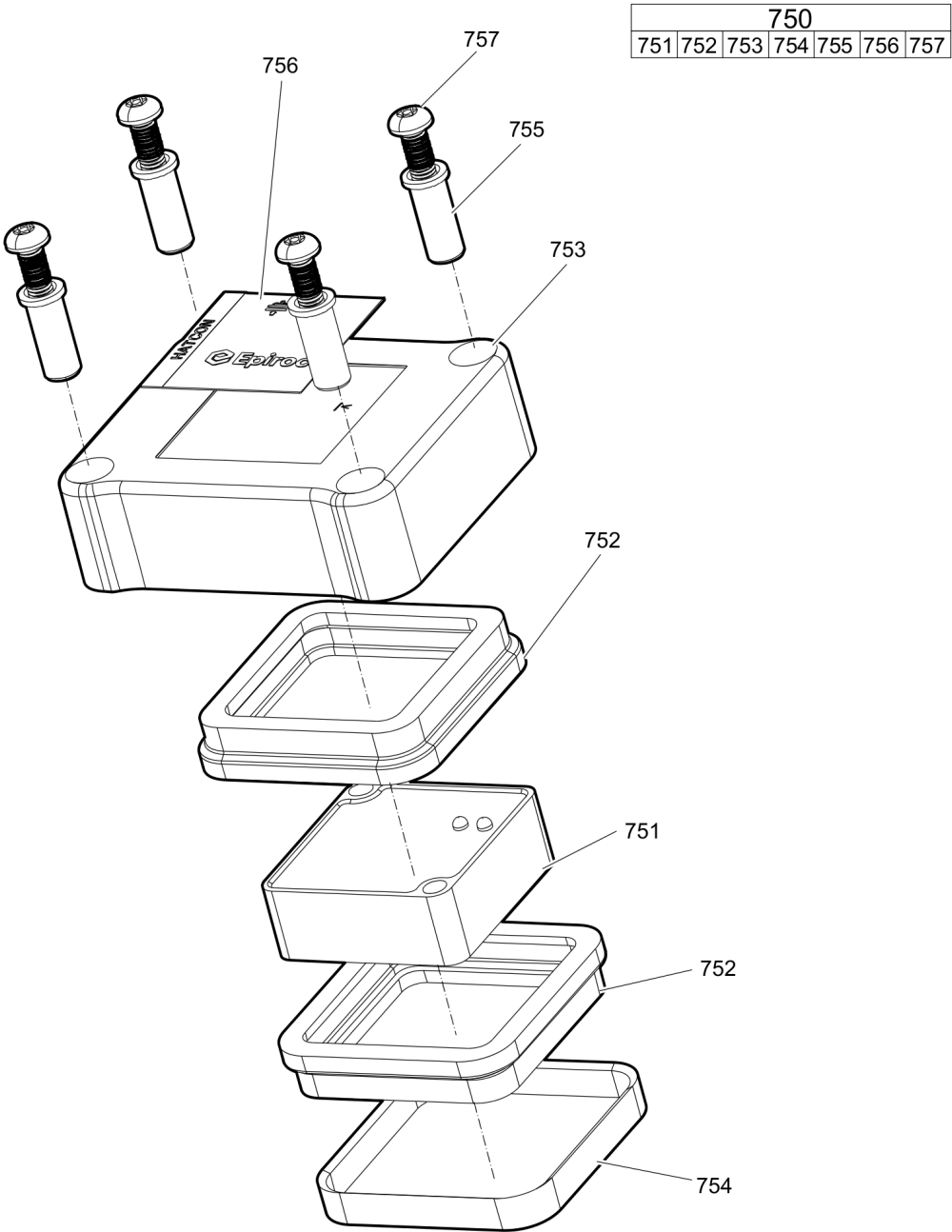
700						
701	702	703	704	705	706	707

707			
708	709	710	711



Item	Part No.	Name	Qty	L
700(701-707)	3363105471	ROTARY TRANSMISSION	1	
701	3363105473	STATOR	1	
702	3363105477	ROTOR	1	
703	3363034318	CAP	1	
704	3363034319	BALL BEARING	1	
705	3363034320	BALL BEARING	1	
706	3363034325	ALLEN SCREW	4	
707(708-711)	3363083066	SEAL KIT (Rotary transmission)	1	
708		V-RING	1	
709		O-RING	1	
710		SLIDE RING	1	
711		SEAL	2	

Mechanical HATCON



Item	Part No.	Name	Qty	L
750(751-757)		HATCON	1	A
751		TRACKING MODULE HATCON	1	
752	3315439130	DAMPER HATCON	2	
753	3315439110	HOUSING TYPE 1 HATCON	1	
754	3315439140	LOCK RING HATCON	1	
755	3315439120	SLEEVE HATCON	4	
756	3315439100	PRODUCT LABEL HATCON	1	
757	3315442600	SCREW HATCON	4	

Comments for Page: HATCON

A | part number see chapter "Optional equipment"

Mechanical Tightening torques

NO EXPLODED VIEW
AVAILABLE
FOR THIS BOM

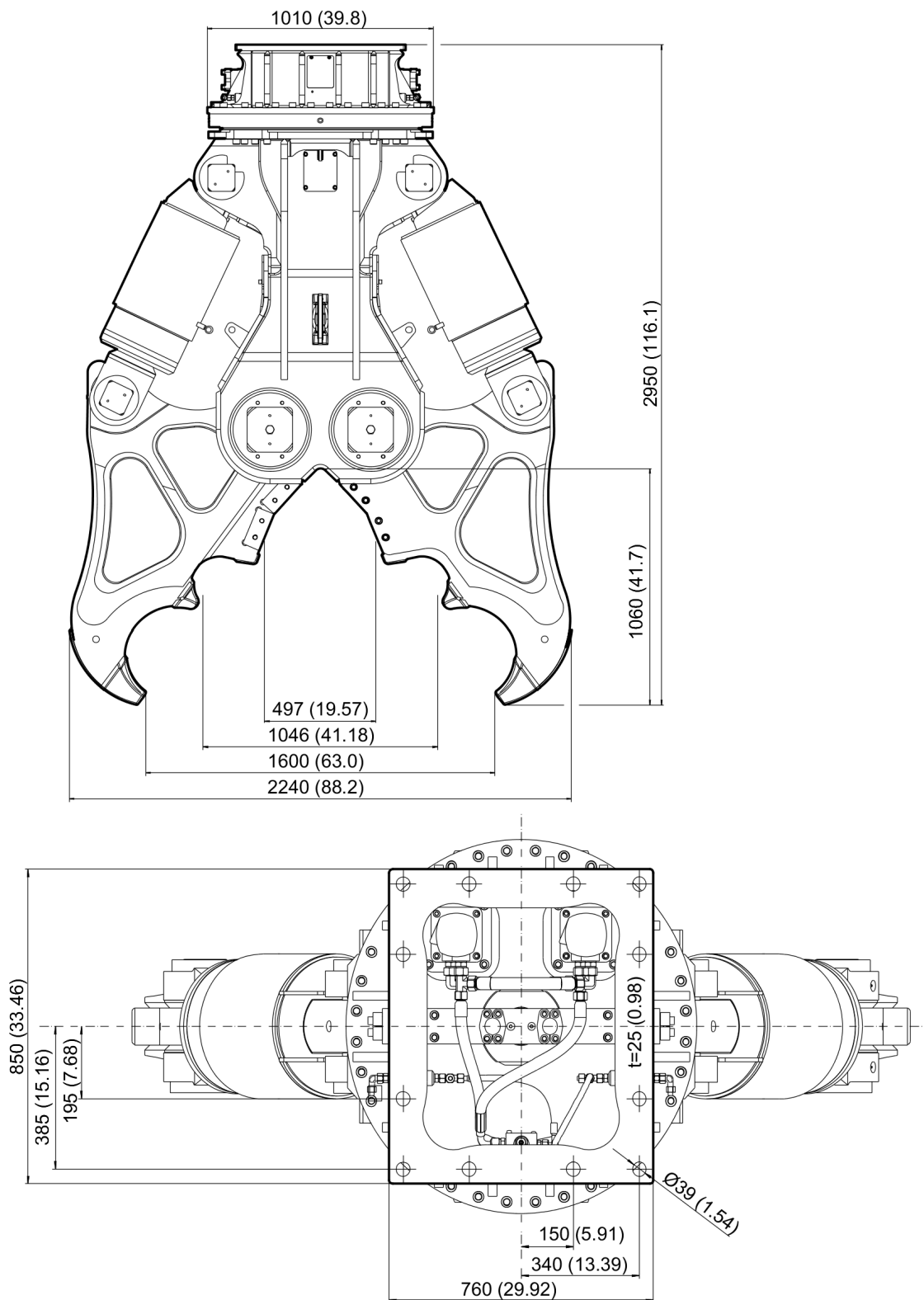
Item	Part No.	Name	Qty	L
13	-	ALLEN SCREW - 180 + 20 Nm (133 + 15 ft lbf)	-	
15	-	ALLEN SCREW - 530 + 20 Nm (391 + 15 ft lbf)	-	
22	-	SCREW HATCON - 22 Nm (16 ft lbf)	-	
26	-	SCREW HATCON - 22 Nm (16 ft lbf)	-	
27	-	ALLEN SCREW - 170 + 15 Nm (125 + 11 ft lbf)	-	
44	-	HEXAGON HEAD SCREW - 630 + 30 Nm (465 + 22 ft lbf)	-	
205	-	GREASE NIPPLE - 8 + 2 Nm (6 + 1 ft lbf)	-	
423	-	ALLEN SCREW - 530 + 30 Nm (391 + 22 ft lbf)	-	
429	-	GREASE NIPPLE - 8 + 2 Nm (6 + 1 ft lbf)	-	
604	-	SCREW HATCON - 22 Nm (16 ft lbf)	-	
606	-	ALLEN SCREW - 19 + 5 Nm (14 + 4 ft lbf)	-	
610	-	ALLEN SCREW - 75 Nm (18 ft lbf)	-	A
611	-	ALLEN SCREW - 255 + 30 Nm (188 + 22 ft lbf)	-	
613	-	FITTING - 70 + 10 Nm (52 + 7 ft lbf)	-	
614	-	THREADED PLUG - 56 + 4 Nm (41 + 3 ft lbf)	-	
615	-	THREADED PLUG - 40 + 20 Nm (30 + 15 ft lbf)	-	
616	-	FITTING - 70 + 10 Nm (52 + 7 ft lbf)	-	
624	-	FITTING -180 + 20 Nm (133 + 15 ft lbf)	-	
625	-	ALLEN SCREW - 530 + 30 Nm (391 + 22 ft lbf)	-	
629	-	ALLEN SCREW - 19 + 5 Nm (14 + 4 ft lbf)	-	
634	-	ALLEN SCREW -180 + 20 Nm (133 + 15 ft lbf)	-	
639	-	ALLEN SCREW -170 + 15 Nm (125 + 11 ft lbf)	-	
641	-	ALLEN SCREW -170 + 15 Nm (125 + 11 ft lbf)	-	
649	-	GREASE NIPPLE - 8 + 2 Nm (6 + 1 ft lbf)	-	
706	-	ALLEN SCREW - 25 Nm (18 ft lbf)	-	
757	-	SCREW HATCON - 22 Nm (16 ft lbf)	-	

Comments for Page: Tightening torques

(L)OCAL REMARKS

A | fix with Loctite 243

Mechanical Dimensions



Refer to the DocMine web page for most up-to-date information. The printed information might be outdated.

Thu Nov 14 12:18:30 UTC 2024

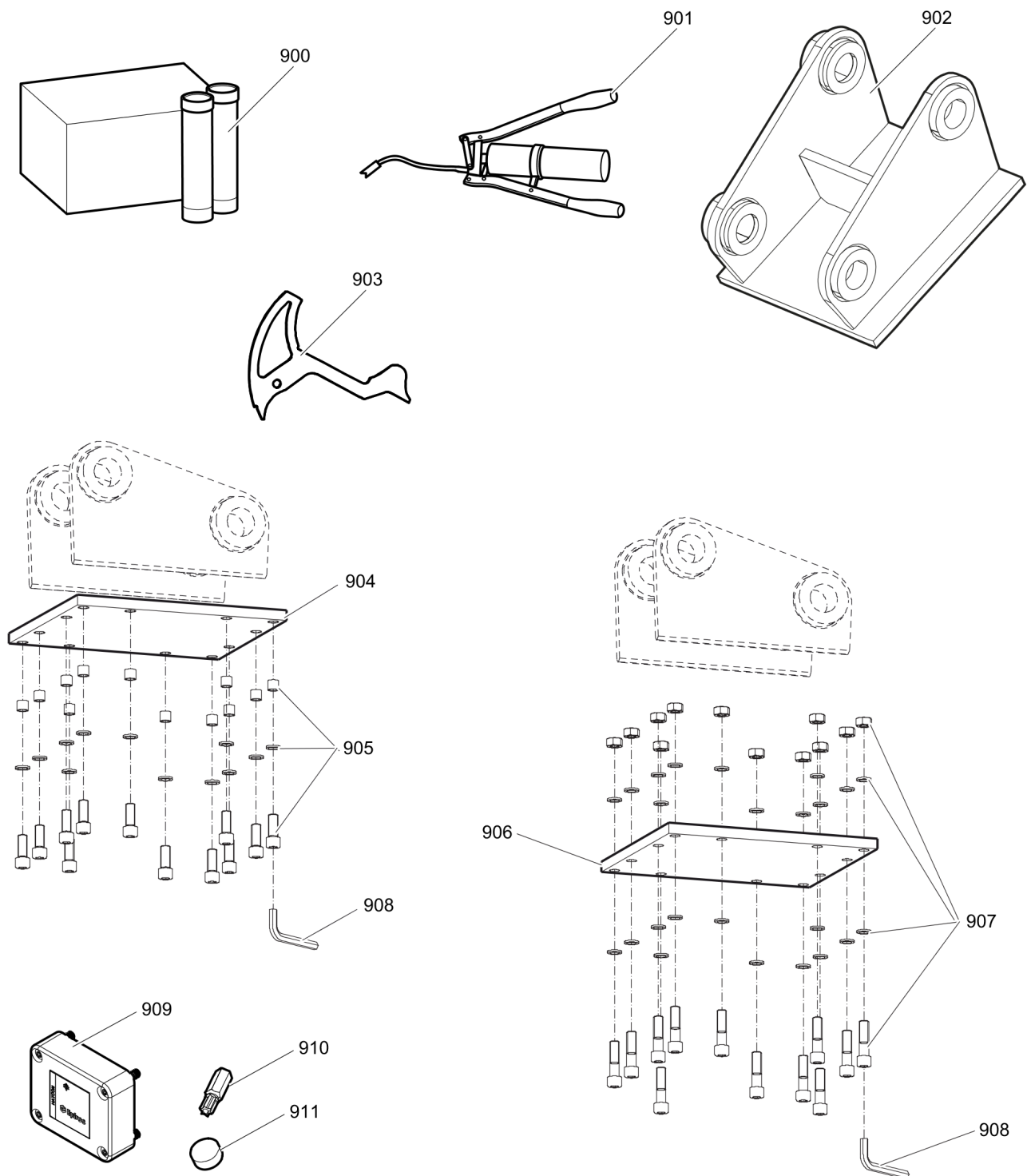
This page intentionally left blank

Options / accessories Hydraulic hoses

NO EXPLODED VIEW
AVAILABLE
FOR THIS BOM

Item	Part No.	Name	Qty	L
	-	Open - Close		
-	3363106493	HYDRAULIC HOSE, I.D. 32 (1.26 in.) flange SAE 90° 1 1/4 in. - 6000 PSI, , 1 5/8 in. JIC, length 2800 mm (110 in.)	2	
-	3363106494	HYDRAULIC HOSE, I.D. 32 (1.26 in.) flange SAE 90° 1 1/4 in. - 6000 PSI, , 1 5/8 in. JIC, length 3500 mm (138 in.)	2	
	-	Rotation		
-	3363031767	HYDRAULIC HOSE, I.D. 8 (3/8"), both ends M20 x 1.5 conical seal 24°, length 2800 mm (110 in.)	2	
-	3363034399	HYDRAULIC HOSE, I.D. 8 (3/8"), both ends M20 x 1.5 conical seal 24°, length 3500 mm (138 in.)	2	

Options / accessories Optional equipment



Refer to the DocMine web page for most up-to-date information. The printed information might be outdated.

Thu Nov 14 12:18:32 UTC 2024

Item	Part No.	Name	Qty	L
900	3363094914	CUTTER GREASE CARTRIDGE, 12 x 400 g (0.88 lbs)	1	
901	0909107100	LUBRICAT.GUN	1	
902		ADAPTER PLATE matching the carrier. Consult the authorized Customer Center/Dealer in your area.	1	
903		GAUGE	1	A
904	3363104727	BASE PLATE WITH THREADED INSERTS	1	
905	3363087307	BOLT KIT	1	
906	3363104725	BASE PLATE WITH THROUGH BORINGS	1	
907	3363094580	BOLT KIT	1	
908	3360478949	ALLEN KEY (27 mm)	1	
909	3315442500	HATCON KIT 1 (3G)	1	B
909	3315442520	HATCON KIT 1 (LTE)	1	B
910	3315439105	SECURITY BIT HATCON	1	
911	3315439106	MAGNET HATCON	1	

Comments for Page: Optional equipment

A | for hard facing the teeth; consult the authorized Customer Center/Dealer in your area.

B | with item 910 and 911

Any unauthorized use or copying of the contents or any part thereof is prohibited.
This applies in particular to trademarks, model denominations, part numbers, and drawings.