

# BP 3050, 3050 R

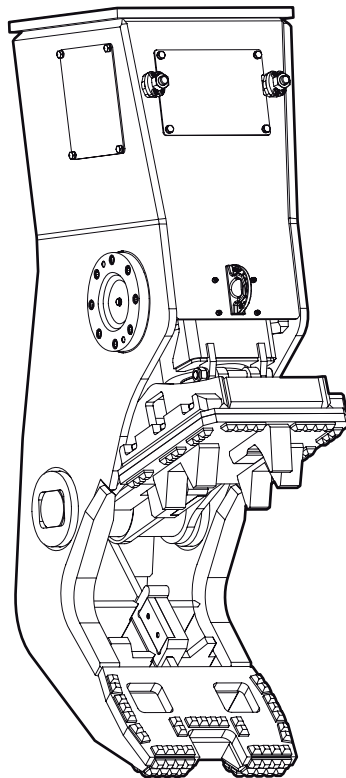
---

## Spare parts list

### Bulk pulverizer

BP 3050 s/n 103 - DEQ149424

BP 3050 R s/n 103 - DEQ149424



# General information

This spare parts list applies to the following:

Part number	Description
3363111715	Bulk pulverizer BP 3050 non rotating
3363111960	Bulk pulverizer BP 3050 rotating

Use only authorized parts. Any damage or malfunction caused by the use of unauthorized parts is not covered by Warranty or Product Liability. Any unauthorized use or copying of the contents or any part thereof is prohibited. This applies in particular to trademarks, model denominations, part numbers, and drawings.

## Instructions for use

This spare parts list contains no safety regulations and is merely intended to assist in the ordering of spare parts.

For information about operating, servicing, or repairing, the relevant Safety and operating instructions must be consulted at all costs.

Please observe the safety instructions listed in the relevant Safety and operating instructions!

## Instructions for ordering

It is essential to indicate the serial number of the hydraulic attachment when ordering spare parts!

Please note the full identification number of your hydraulic attachment.

Determine the quantity of individual parts which are required and need to be ordered. The order must indicate the following details:

- full identification code of the hydraulic attachment
- required quantity
- part number
- description

## Contents

### Service, repair and wear part kits

Kit list	1
----------	---

### Mechanical

Bulk pulverizer BP 3050 non rotating	3
Bulk pulverizer BP 3050 rotating	6
Pulverizer jaw	10
Hydraulic cylinder	13
Upper part complete	15
Rotary transmission	18
Tightening torque	21
Dimensions BP 3050 non rotating	23
Dimensions BP 3050 rotating	24

### Options / accessories

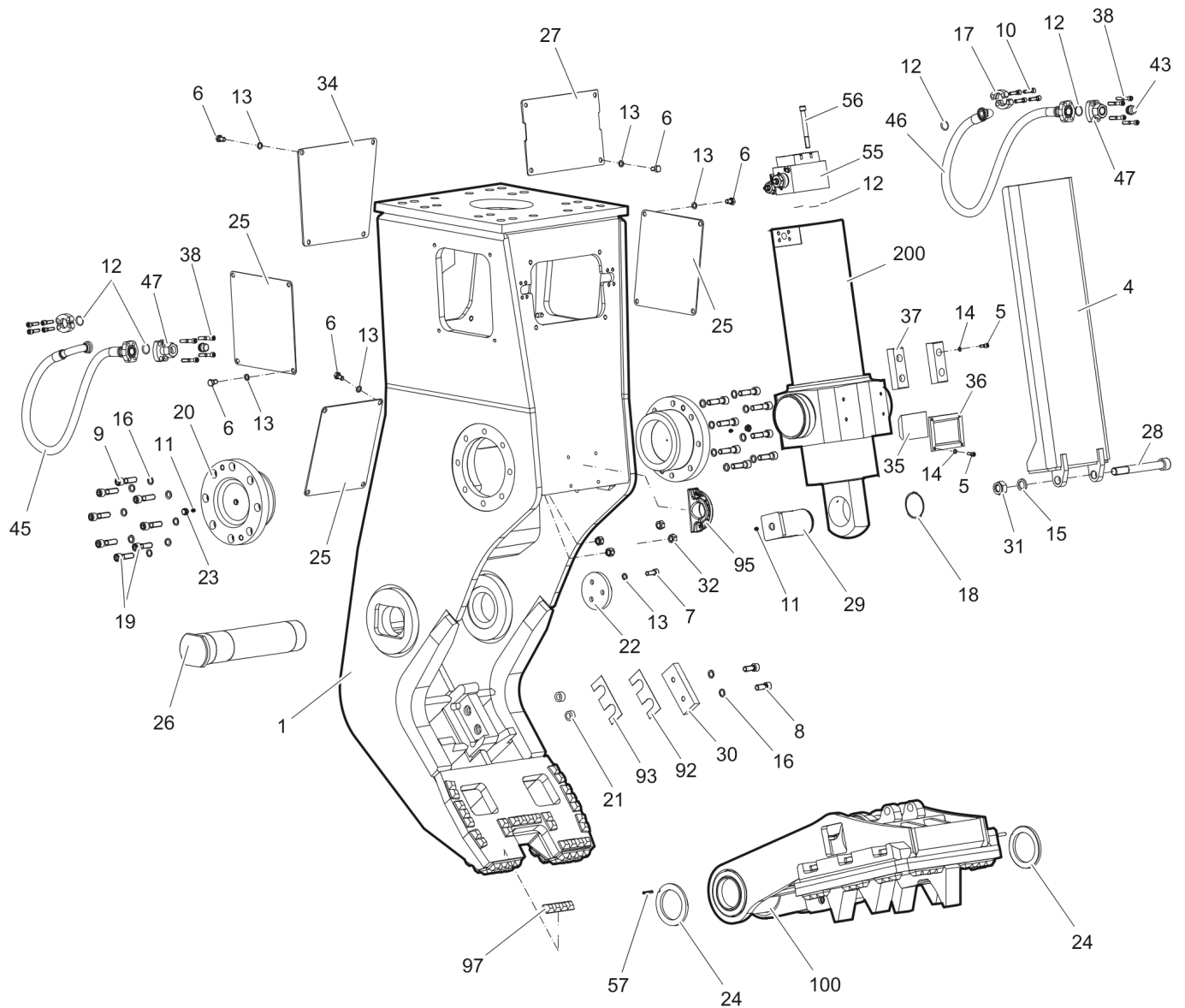
Hydraulic hoses - non rotating	26
Hydraulic hoses - rotating	29
Optional equipment	31

---

**Service, repair and wear part kits** Kit list

NO EXPLODED VIEW  
AVAILABLE  
FOR THIS BOM

Item	Part No.	Name	Qty	L
KIT	3363112466	Label kit	1	
KIT	3363112463	Cutter blades kit	1	
8	3360106092	Allen screw	2	
16	3361850748	Pair of lock washers	2	
21	3363035107	Lock ring	2	
30	3363086455	Cutter blade	1	
92	3363092403	Shim	1	
93	3363091026	Shim	1	
105	3363035107	Lock ring	2	
106	3363086455	Cutter blade	1	
109	3361850748	Pair of lock washers	2	
110	3360106092	Allen screw	2	
192	3363092403	Shim	1	
193	3363091026	Shim	1	
KIT	3363083945	Seal kit (Hydraulic motor housing)	1	
KIT	3363083074	Seal kit (Hydraulic motor)	1	
KIT	3363113168	Seal kit (Rapid movement valve)	1	

**Mechanical** Bulk pulverizer BP 3050 non rotating

Refer to Parts Online for the most up to date information. The printed information might be outdated.

Mon Aug 17 03:52:47 MDT 2015

Item	Part No.	Name	Qty	L
1	3363115417	Housing	1	
4	3363112733	Protective sheath	1	
5	3360103745	Allen screw	8	
6	3360105141	Hexagon head bolt	20	
7	3360106079	Allen screw	3	
8	3360106092	Allen screw	2	
9	3360106098	Allen screw	12	
10	3360026513	Allen screw	8	
11	3360209834	Grease nipple	3	
12	3360314370	O-ring	7	
13	3361333703	Lock washer	23	
14	3361850745	Pair of lock washers	8	
15	3361850747	Pair of lock washers	1	
16	3361850748	Pair of lock washers	18	
17	3361853208	Flange half	4	
18	3362328072	Lock ring	1	
19	3362328117	Allen screw	4	
20	3363088851	Cap	2	
21	3363035107	Lock ring	2	
22	3363069911	Cap	1	
23	3363070084	Threaded plug	2	
24	3363070088	Disk	2	
25	3363082455	Plate	3	
26	3363082491	Bolt	1	
27	3363112732	Plate	1	
28	3363111908	Allen screw	1	
29	3363086439	Bolt	1	
30	3363086455	Cutter blade	1	
31	3363087612	Hexagon nut	1	
32	3363087619	Hexagon nut	4	
34	3363088269	Plate	1	
35	3363088385	Guide part	1	
36	3363088387	Support	1	
37	3363088389	Guide part	2	
38	3360026518	Allen screw	8	
43	3361031956	Plug	2	
45	3363111915	Hydraulic hose	1	

Refer to Parts Online for the most up to date information. The printed information might be outdated.

Mon Aug 17 03:52:47 MDT 2015

Item	Part No.	Name	Qty	L
46	3363112218	Hydraulic hose	1	
47	3363083083	Hose connection	2	
55	3363103691	Rapid movement valve	1	
56	3363091092	Allen screw	4	
57	3363098104	Spring dowel sleeve	2	
92	3363092403	Shim	1	A
93	3363091026	Shim	1	B
95	3363111994	Lifting eye	1	C
97	3363100177	Wear rail	10	D
100	3363112730	Pulverizer jaw complete	1	E
200	3363112731	Hydraulic cylinder	1	E

Comments for Page: Bulk pulverizer BP 3050 non rotating

(L)OCAL REMARKS

A | 0.2 mm (0.01 in.) thick, as required

B | 1.0 mm (0.04 in.) thick, as required

C | professional welding process necessary

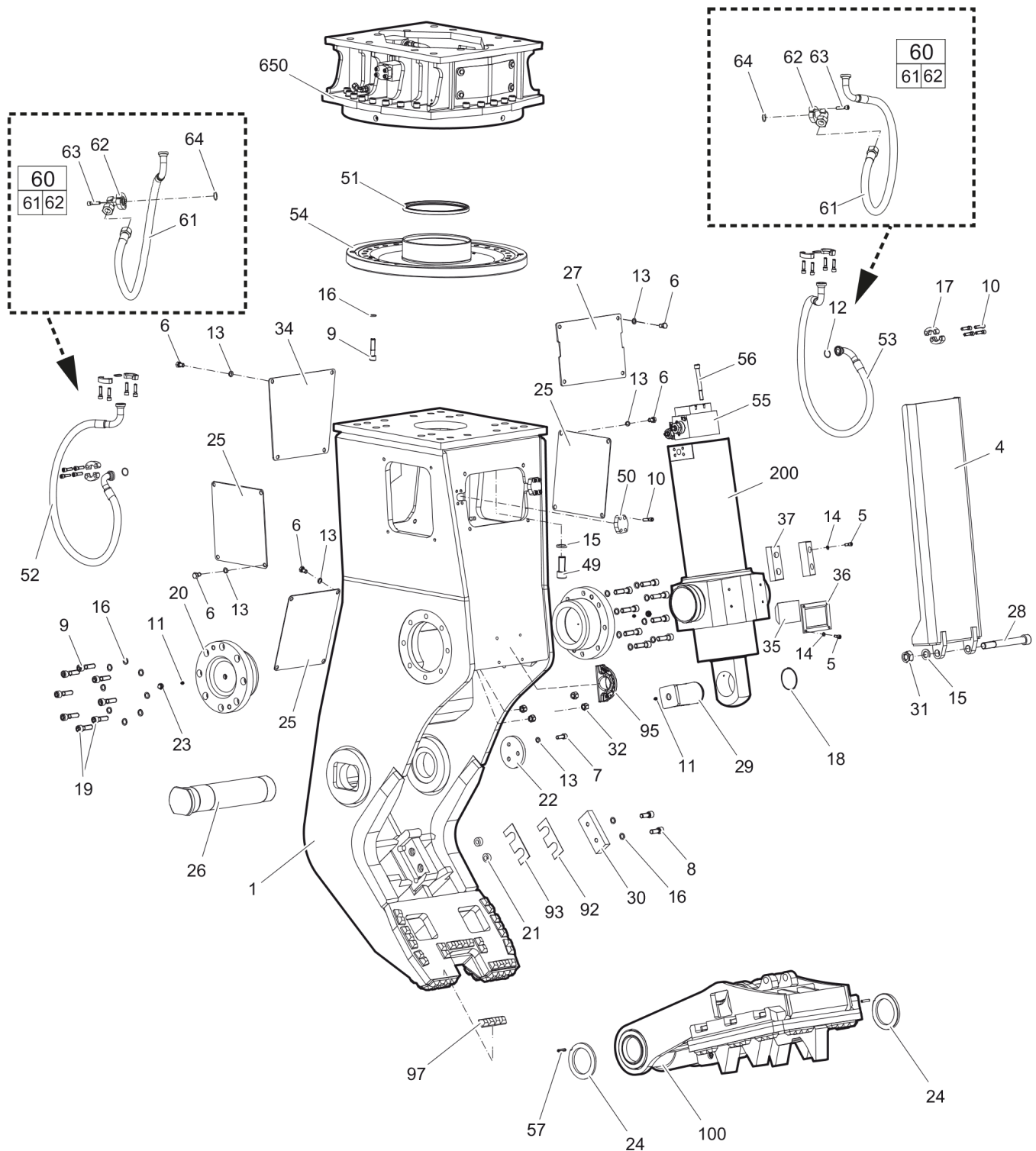
D | block with six pieces, cut to needed size necessary

professional welding process necessary

E | see separate chapter



This page intentionally left blank

**Mechanical** Bulk pulverizer BP 3050 rotating

Refer to Parts Online for the most up to date information. The printed information might be outdated.

Mon Aug 17 03:52:48 MDT 2015

Item	Part No.	Name	Qty	L
1	3363115417	Housing	1	
4	3363112733	Protective sheath	1	
5	3360103745	Allen screw	8	
6	3360105141	Hexagon head bolt	20	
7	3360106079	Allen screw	3	
8	3360106092	Allen screw	2	
9	3360106098	Allen screw	44	
10	3360026513	Allen screw	24	
11	3360209834	Grease nipple	3	
12	3360314370	O-ring	4	
13	3361333703	Lock washer	23	
14	3361850745	Pair of lock washers	8	
15	3361850747	Pair of lock washers	21	
16	3361850748	Pair of lock washers	50	
17	3361853208	Flange half	8	
18	3362328072	Lock ring	1	
19	3362328117	Allen screw	4	
20	3363088851	Cap	2	
21	3363035107	Lock ring	2	
22	3363069911	Cap	1	
23	3363070084	Threaded plug	2	
24	3363070088	Disk	2	
25	3363082455	Plate	3	
26	3363082491	Bolt	1	
27	3363112732	Plate	1	
28	3363111908	Allen screw	1	
29	3363086439	Bolt	1	
30	3363086455	Cutter blade	1	
31	3363087612	Hexagon nut	1	
32	3363087619	Hexagon nut	4	
34	3363088269	Plate	1	
35	3363088385	Guide part	1	
36	3363088387	Support	1	
37	3363088389	Guide part	2	
49	3363083003	Allen screw	20	
50	3363034040	Blind flange	2	A
51	3363070083	Seal	1	

Refer to Parts Online for the most up to date information. The printed information might be outdated.

Mon Aug 17 03:52:48 MDT 2015

Item	Part No.	Name	Qty	L
52		Hydraulic hose	1	
53		Hydraulic hose	1	
54	3363111963	Plate	1	
55	3363103691	Rapid movement valve	1	
56	3363091092	Allen screw	4	
57	3363098104	Spring dowel sleeve	2	
60(61-62)	3363117285	Upgrade kit	2	B
61	3363117256	Hydraulic hose	1	
62	3362263593	Fitting complete	1	C
63	3360026513	Allen screw	8	
64	3360314370	O-ring	2	
92	3363092403	Shim	1	D
93	3363091026	Shim	1	E
95	3363111994	Lifting eye	1	F
97	3363100177	Wear rail	10	G
100	3363112730	Pulverizer jaw complete	1	H
200	3363112731	Hydraulic cylinder	1	H
650	3363104175	Upper part complete	1	H

Comments for Page: Bulk pulverizer BP 3050 rotating

(L)OCAL REMARKS

A | with 4 times item 10

B | Replacement for item 52 and 52

C | with 4 times item 63 and 1 times item 64

D | 0.2 mm (0.01 in.) thick, as required

E | 1.0 mm (0.04 in.) thick, as required

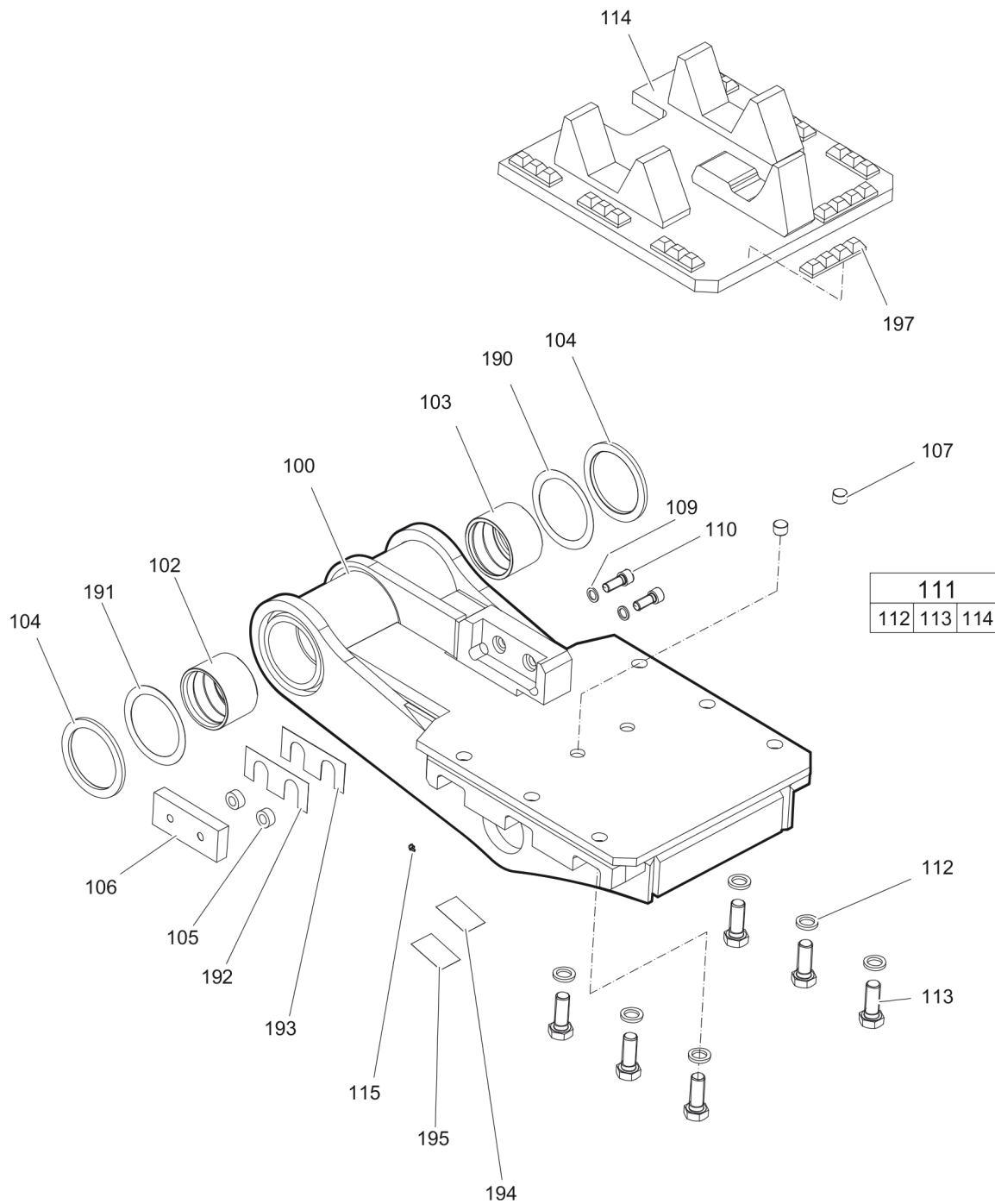
F | professional welding process necessary

G | block with six pieces, cut to needed size necessary

professional welding process necessary

H | see separate chapter

This page intentionally left blank

**Mechanical** Pulverizer jaw

Refer to Parts Online for the most up to date information. The printed information might be outdated.

Mon Aug 17 03:52:49 MDT 2015

Item	Part No.	Name	Qty	L
100	3363112730	Pulverizer jaw complete	1	A
102	3363069865	Bearing bush	1	
103	3363069867	Bearing bush	1	
104	3363070089	Disk	2	
105	3363035107	Lock ring	2	
106	3363086455	Cutter blade	1	
107	3363086441	Lock pin	2	
109	3361850748	Pair of lock washers	2	
110	3360106092	Allen screw	2	
111(112-114)	3363112468	Tooth plate complete	1	
112	3361850747	Pair of lock washers	6	
113	3363111871	Hexagon head bolt	6	
114	-	Tooth plate	1	B
115	3360209834	Grease nipple	1	
190	3363111884	Spacer ring	1	C
191	3363070090	Spacer ring	1	D
192	3363092403	Shim	1	C
193	3363091026	Shim	1	E
194	3362268751	Label tightening torque	1	F
195	3363066750	Label tightening torque	1	G
197	3363100177	Wear rail	4	H

Comments for Page: Pulverizer jaw

(L)OCAL REMARKS

A | with parts item 102 to 113

B | with parts item 196 and 197

C | 0.2 mm (0.01 in.) thick, as required

D | 0.5 mm (0.02 in.) thick, as required

E | 1.0 mm (0.04 in.) thick, as required

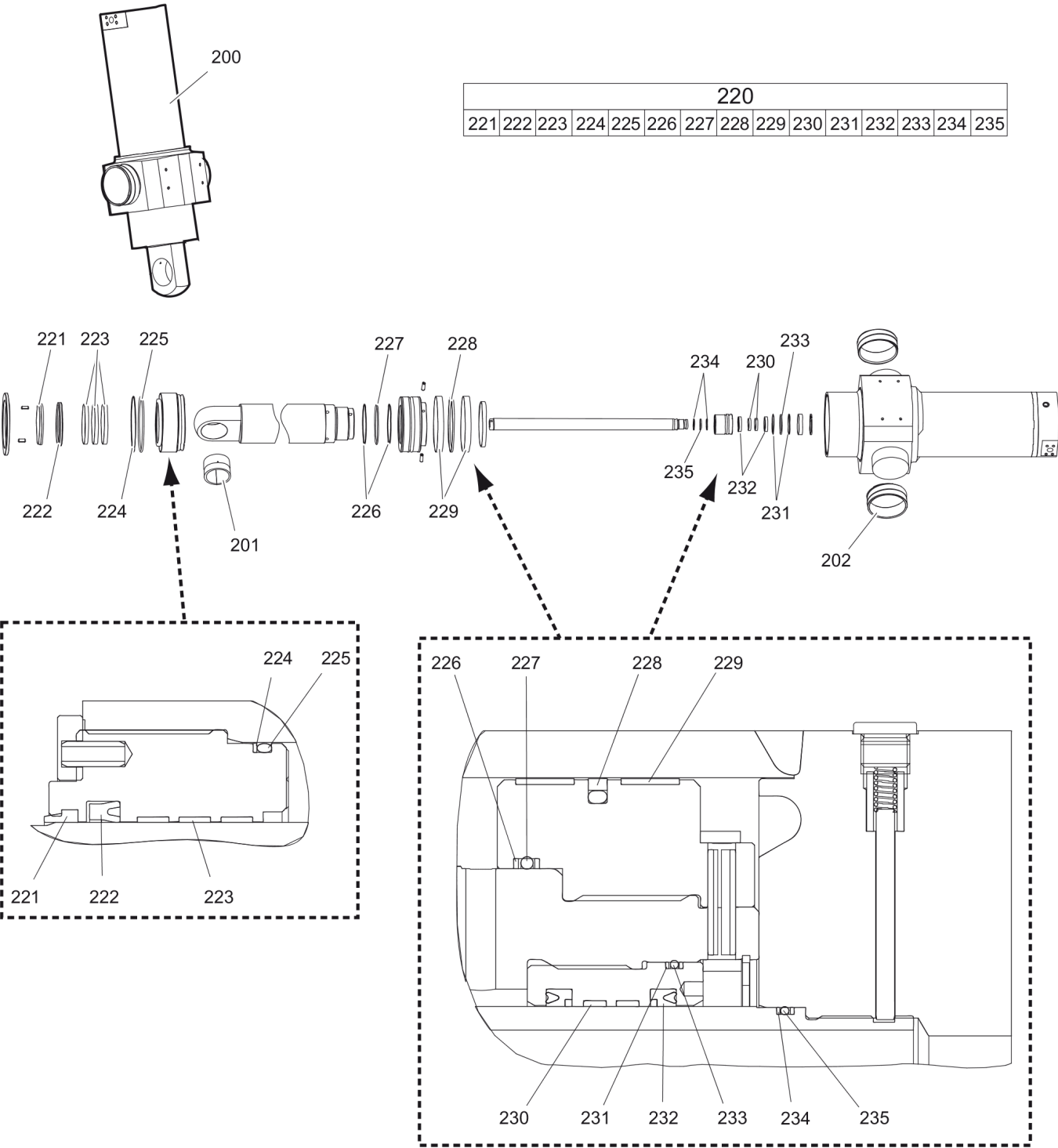
F | German/English

G | Spanish/French

H | block with six pieces, cut to needed size necessary

professional welding process necessary

Mechanical Hydraulic cylinder



220														
221	222	223	224	225	226	227	228	229	230	231	232	233	234	235

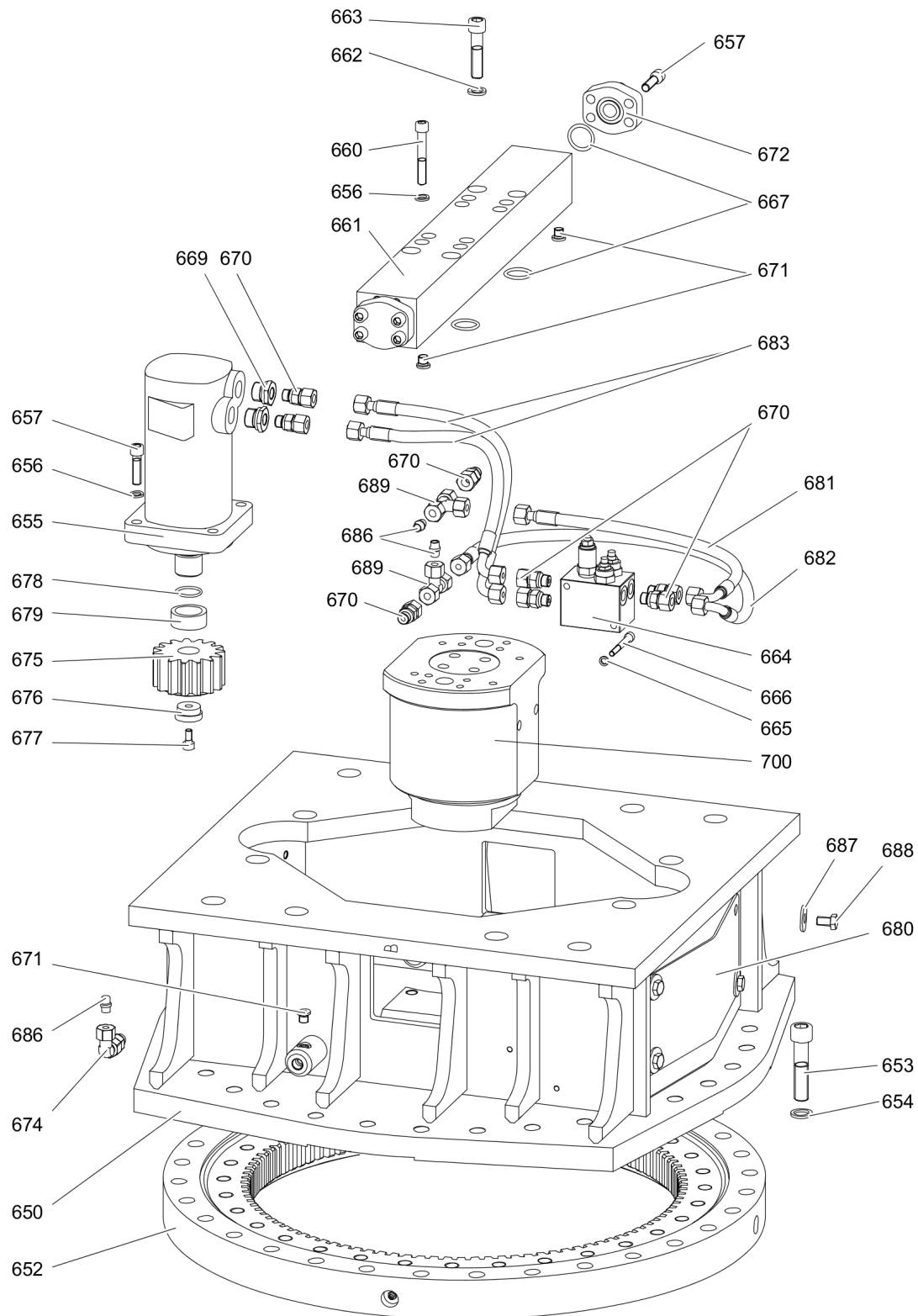


Item	Part No.	Name	Qty	L
200	3363112731	Hydraulic cylinder	1	A
201	3363112970	Clamping bush	1	
202	3363069873	Clamping bush	2	
220(221-235)	3363112987	Seal kit	1	
221	-	Wiper of Actuating Cylinder	1	
222	-	Seal	1	
223	-	Guide Ring	3	
224	-	Back-up ring	1	
225	-	O-ring	1	
226	-	Back-up ring	2	
227	-	O-ring	1	
228	-	Seal	1	
229	-	Guide Ring	2	
230	-	Guide Ring	2	
231	-	Back-up ring	2	
232	-	Seal	2	
233	-	O-ring	1	
234	-	Back-up ring	2	
235	-	O-ring	1	

Comments for Page: Hydraulic cylinder

(L)OCAL REMARKS

A | with parts item 201 to 235

**Mechanical** Upper part complete

Refer to Parts Online for the most up to date information. The printed information might be outdated.

Mon Aug 17 03:52:51 MDT 2015

Item	Part No.	Name	Qty	L
650	3363104175	Upper part complete	1	A
652	3363070082	Four point bearing	1	
653	3360106099	Allen screw	28	
654	3361850748	Pair of lock washers	28	
655	3363098967	Hydraulic motor	1	
656	3361850596	Pair of lock washers	12	
657	3360026513	Allen screw	12	
660	3363034429	Allen screw	8	
661	3363104173	Connection plate	1	
662	3361333703	Lock washer	4	
663	3360026646	Allen screw	4	
664	3362266712	Valve block	1	
665	3361850743	Pair of lock washers	2	
666	3360103738	Allen screw	2	
667	3360314370	O-ring	4	
669	3362267435	Fitting	2	
670	3360478333	Fitting	8	
671	3360478439	Threaded plug	4	
672	3363034040	Blind flange	2	
674	3363091912	Fitting	2	
675	3362260807	Spur pinion	1	
676	3363088327	Ring	1	
677	3361031981	Allen screw	1	
678	3360313304	O-ring	1	
679	3362265869	Ring	1	
680	3363104171	Cover sheet	2	
681	3363083970	Hydraulic hose	1	
682	3363085884	Hydraulic hose	1	
683	3363085885	Hydraulic hose	2	
686	3360314593	Plug	4	
687	3362328082	Washer	8	
688	3360433381	Hexagon head screw	8	
689	3360314543	Fitting	2	
700	3363033685	Rotary transmission	1	B

Comments for Page: Upper part complete

(L)OCAL REMARKS

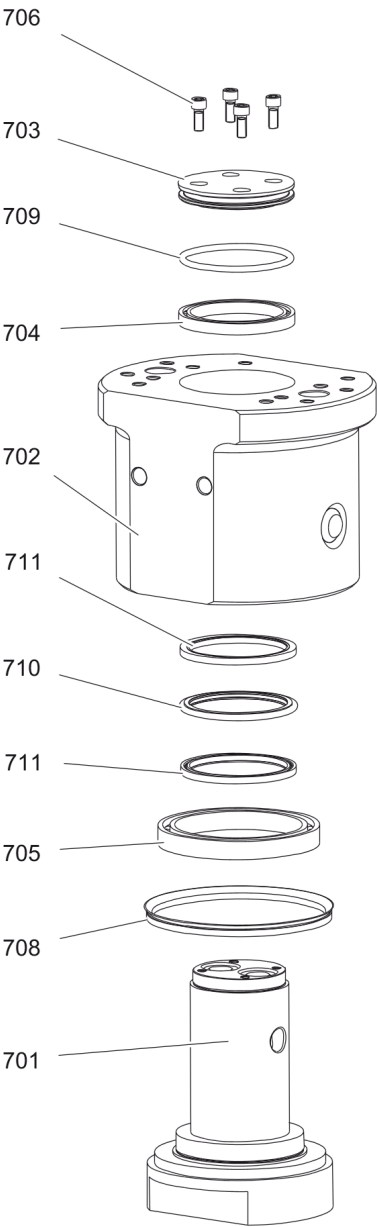
A | with item 652 - 700

B | see separate chapter

This page intentionally left blank

Mechanical Rotary transmission

700						
701	702	703	704	705	706	707



707			
708	709	710	711

Item	Part No.	Name	Qty	L
700(701-707)	3363033685	Rotary transmission	1	
701	3363034316	Rotor	1	
702	3363034317	Stator	1	
703	3363034318	Cap	1	
704	3363034319	Ball bearing	1	
705	3363034320	Ball bearing	1	
706	3363034325	Allen screw	4	
707(708-711)	3363083066	Seal kit (Rotary transmission)	1	
708		V-ring	1	
709		O-ring	1	
710		Slide ring	1	
711		Seal	2	

---

**Mechanical** Tightening torque

NO EXPLODED VIEW  
AVAILABLE  
FOR THIS BOM

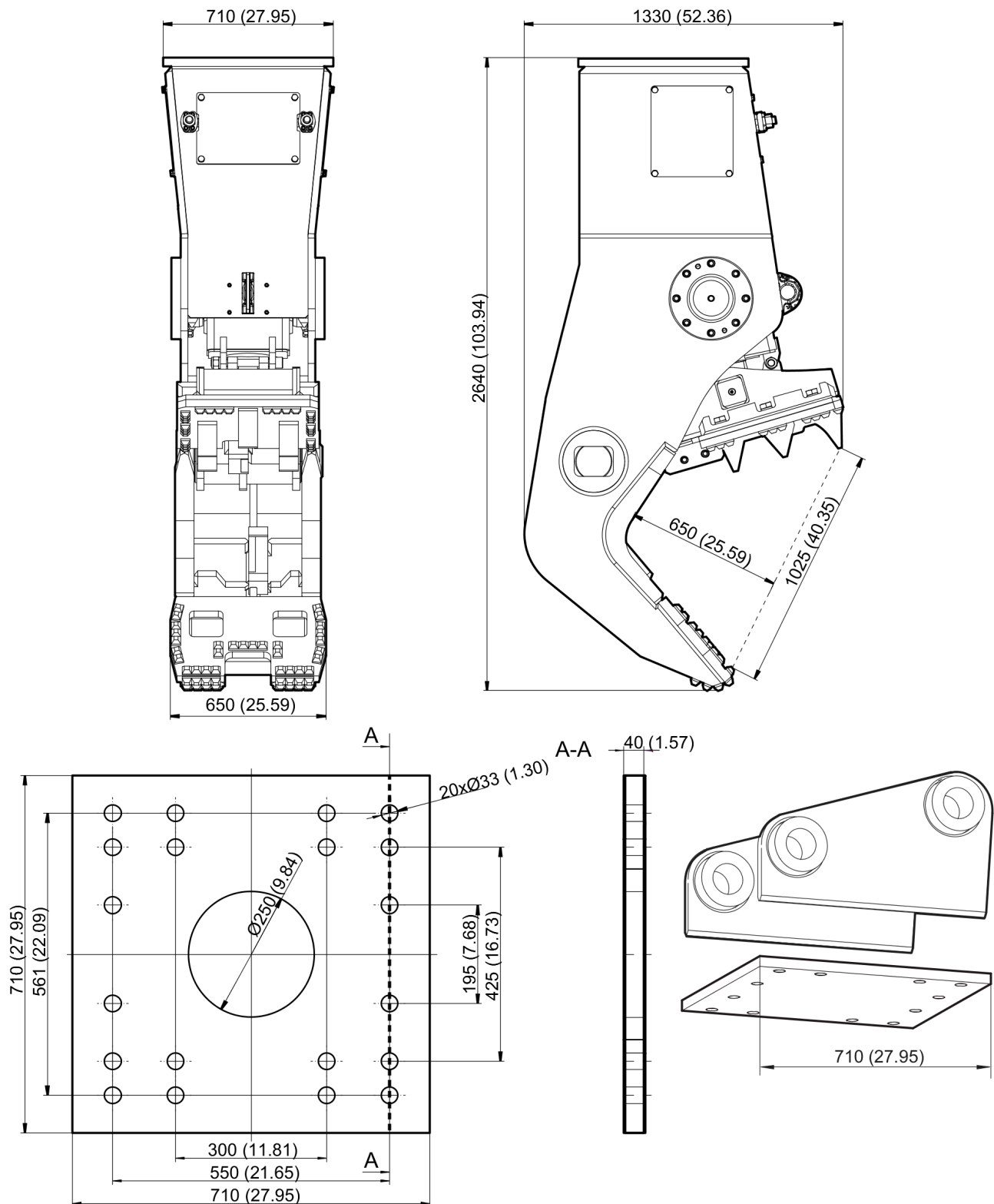


Item	Part No.	Name	Qty	L
5	-	Allen screw - 44 + 5 Nm	-	
6	-	Hexagon head bolt - 180 + 5 Nm	-	
7	-	Allen screw - 255 + 30 Nm	-	
8	-	Allen screw - 530 + 30 Nm	-	
9	-	Allen screw - 530 + 30 Nm	-	
10	-	Allen screw - 100 + 10 Nm	-	
19	-	Allen screw - 530 + 30 Nm	-	
31	-	Hexagon nut - 530 + 30 Nm	-	
32	-	Hexagon nut - 530 + 30 Nm	-	
38	-	Allen screw - 100 + 10 Nm	-	
56	-	Allen screw - 250 + 20 Nm	-	
110	-	Hexagonal nut - 530 + 30 Nm	-	
113	-	Hexagon head bolt - 1000 + 30 Nm	-	
653	-	Allen screw - 530 + 30 Nm	-	
657	-	Allen screw - 75 + 10 Nm	-	
660	-	Allen screw - 75 + 10 Nm	-	
663	-	Allen screw - 180 + 20 Nm	-	
666	-	Allen screw - 19 + 5 Nm	-	
669	-	Fitting - 150 + 20 Nm	-	
670	-	Fitting - 70 + 10 Nm	-	
674	-	Fitting - 70 + 10 Nm	-	
677	-	Allen screw - 70 + 5 Nm	-	A
688	-	Hexagon head bolt - 75 + 10 Nm	-	

Comments for Page: Tightening torque

(L)OCAL REMARKS

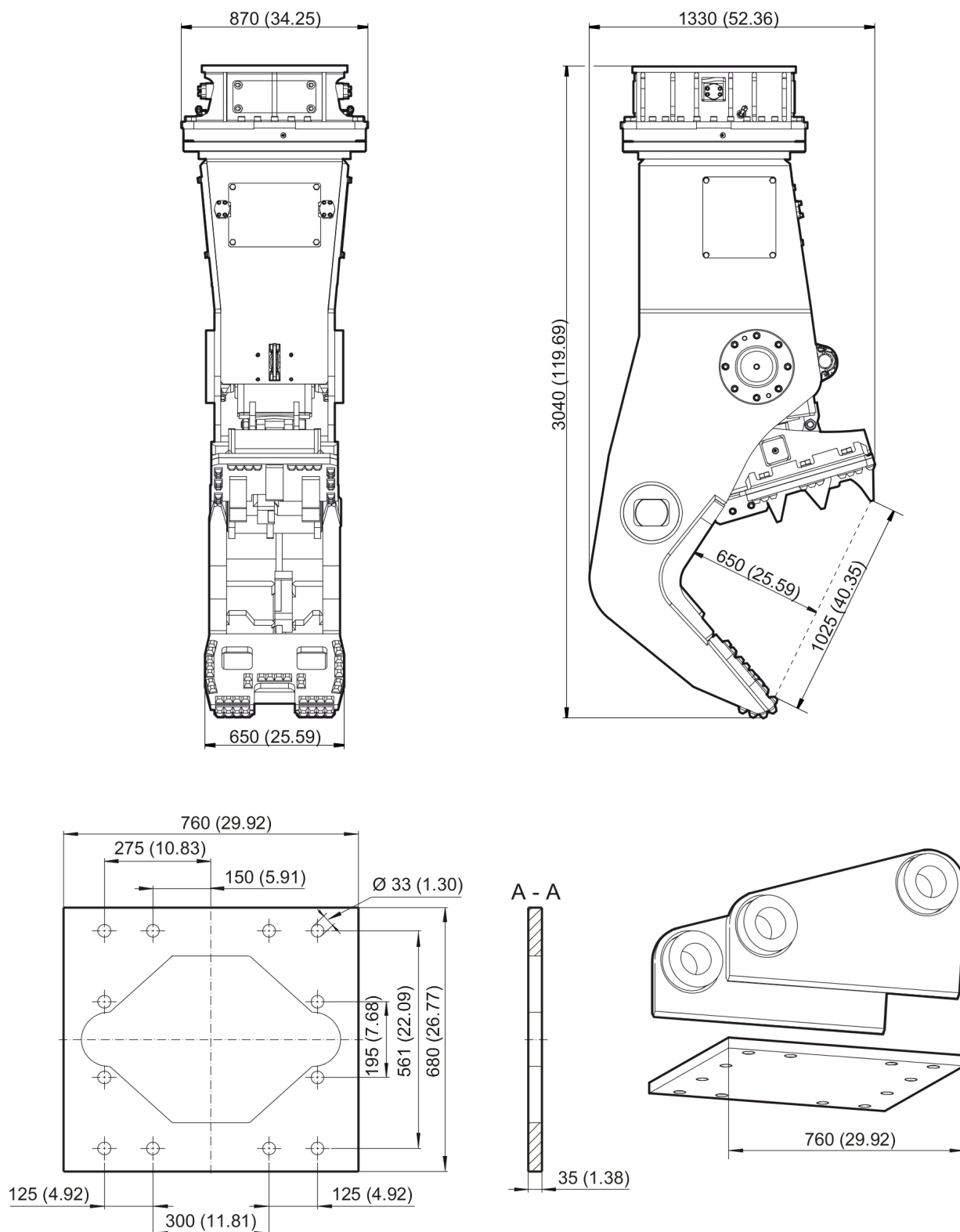
A | fix with Loctite 243

**Mechanical** Dimensions BP 3050 non rotating

Refer to Parts Online for the most up to date information. The printed information might be outdated.

Mon Aug 17 03:52:53 MDT 2015

This page intentionally left blank

**Mechanical** Dimensions BP 3050 rotating

Refer to Parts Online for the most up to date information. The printed information might be outdated.

Mon Aug 17 03:52:53 MDT 2015

This page intentionally left blank

---

**Options / accessories** Hydraulic hoses - non rotating

NO EXPLODED VIEW  
AVAILABLE  
FOR THIS BOM

Item	Part No.	Name	Qty	L
-	3360992340	Hydraulic hose, I.D. 25 (1"), both ends M42 x 2 conical seal 24°, length 2300 mm (91 in.)	2	
-	3361853859	Hydraulic hose, I.D. 25 (1"), both ends M42 x 2 conical seal 24°, length 2800 mm (110 in.)	2	

---

**Options / accessories** Hydraulic hoses - rotating

NO EXPLODED VIEW  
AVAILABLE  
FOR THIS BOM



Item	Part No.	Name	Qty	L
Not Shown	-	Open - Close	1	
-	3363094645	Hydraulic Hose, I.D. 25 (1"), , flange SAE 90° - 6000 PSI / M42 x 2, conical seal 24°, length 2300 mm (91 in.)	2	
-	3363094646	Hydraulic Hose, I.D. 25 (1"), , flange SAE 90° - 6000 PSI / M42 x 2, conical seal 24°, length 2800 mm (110 in.)	2	
Not Shown	-	Rotation	1	
-	3363031767	Hydraulic hose, I.D. 8 (3/8"), both ends M20 x 1.5 conical seal 24°, length 2800 mm (110 in.)	2	
-	3363034399	Hydraulic hose, I.D. 8 (3/8"), both ends M20 x 1.5 conical seal 24°, length 3500 mm (138 in.)	2	

---

**Options / accessories** Optional equipment

NO EXPLODED VIEW  
AVAILABLE  
FOR THIS BOM

Item	Part No.	Name	Qty	L
-	3363094914	Cutter grease cartridge, 12 x 400 g (0.88 lbs)	1	
-	0909107100	Grease gun(for manual greasing with catridge 400g)	1	
Not Shown	-	Adapter plate matching the carrier. Consult the Atlas Copco Customer Center/Dealer in your area.	1	
-	3363099795	Base plate with threaded inserts	1	
-	3363087306	Bolt kit	1	
-	3363100699	Base plate with through borings	1	
-	3363094579	Bolt kit	1	
-	3360209445	Allen key (22 mm)	1	

Any unauthorized use or copying of the contents or any part thereof is prohibited.  
This applies in particular to trademarks, model denominations, part numbers, and drawings.

