

SB 102

Spare parts list Hydraulic breakers

SB 102 s/n BES149351 –



General information

This spare parts list applies to the following:

Part number	Description
8460030032	SB 102
8460030035	SB 102 HATCON
8460030037	SB 102 HATCON LTE

Use only authorized parts. Any damage or malfunction caused by the use of unauthorized parts is not covered by Warranty or Product Liability. Any unauthorized use or copying of the contents or any part thereof is prohibited. This applies in particular to trademarks, model denominations, part numbers, and drawings.

Instructions for use

This spare parts list contains no safety regulations and is merely intended to assist in the ordering of spare parts. For information about operating, servicing, or repairing, the relevant Safety and operating instructions must be consulted at all costs. Please observe the safety instructions listed in the relevant Safety and operating instructions!

Service, repair and wear part kits

Label kit 1

Seal kit 3

Lower hammer part kit5

Accumulator repair kit 7

Mechanical

Hydraulic breaker 9

HATCON (Horizontal) 12

Bushing oversize, complete 15

Restrictor, complete 17

Tightening torque 19

Dimensions 21

Options/accessories

Hydraulic hoses 22

Optional equipment 25

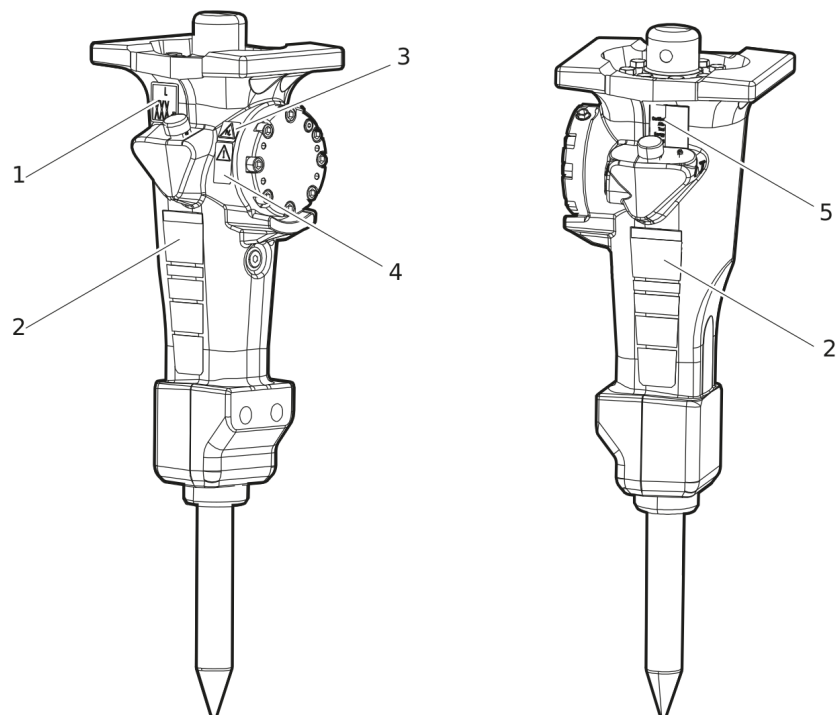
Working tools ClassicLine 27

Working tools ProLine 29

Annex

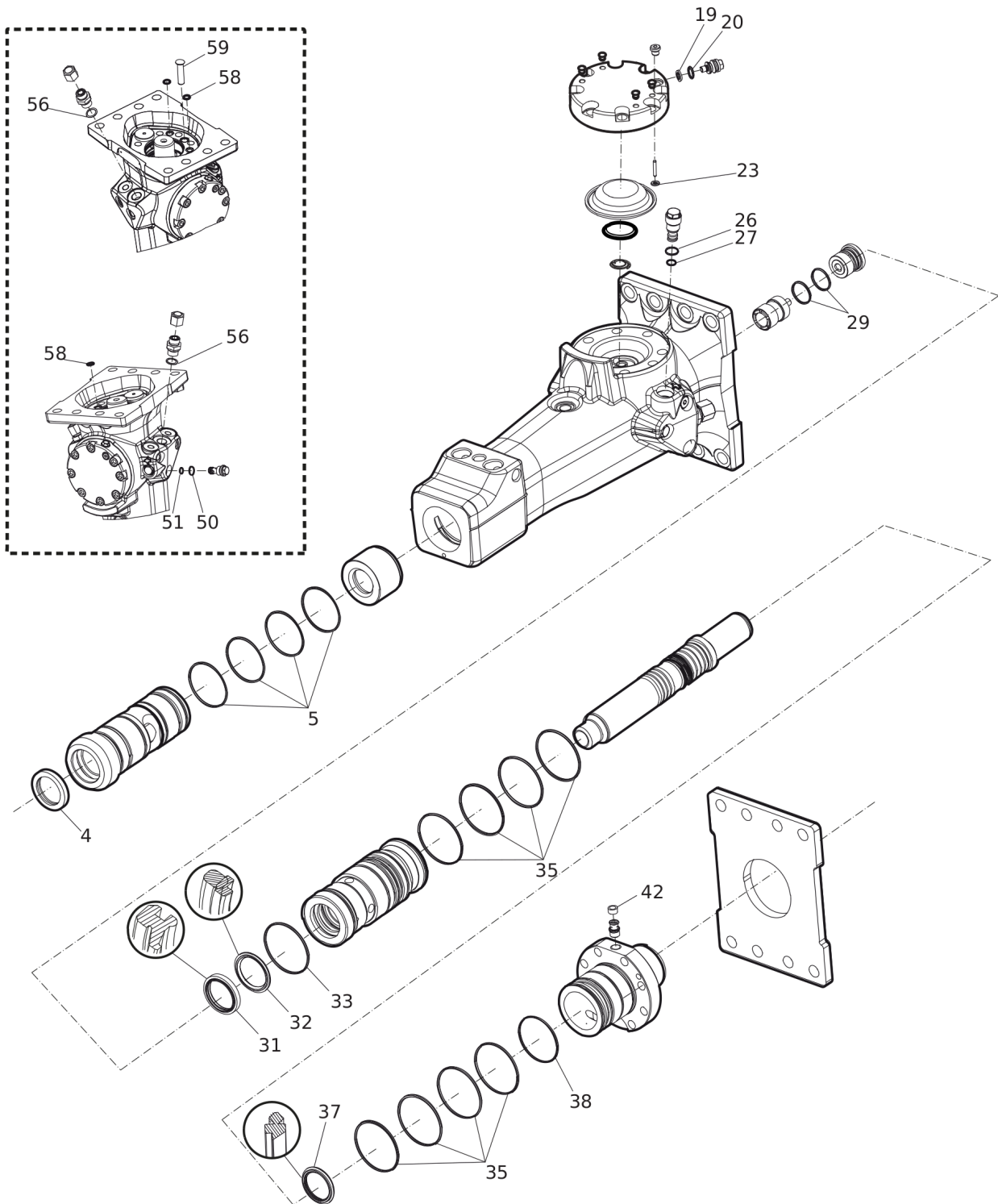
Environmental Product Compliance - REACH Declaration31

Service, repair and wear part kits Label kit



Item	Part No.	Name	Qty	L
KIT	3315296291	LABEL KIT	1	
1		SOUND POWER LABEL	1	
2		PRODUCT LABEL	2	
3		SAFETY LABEL	1	
4		SAFETY LABEL	1	
5		AEM SIGN	1	

Service, repair and wear part kits Seal kit

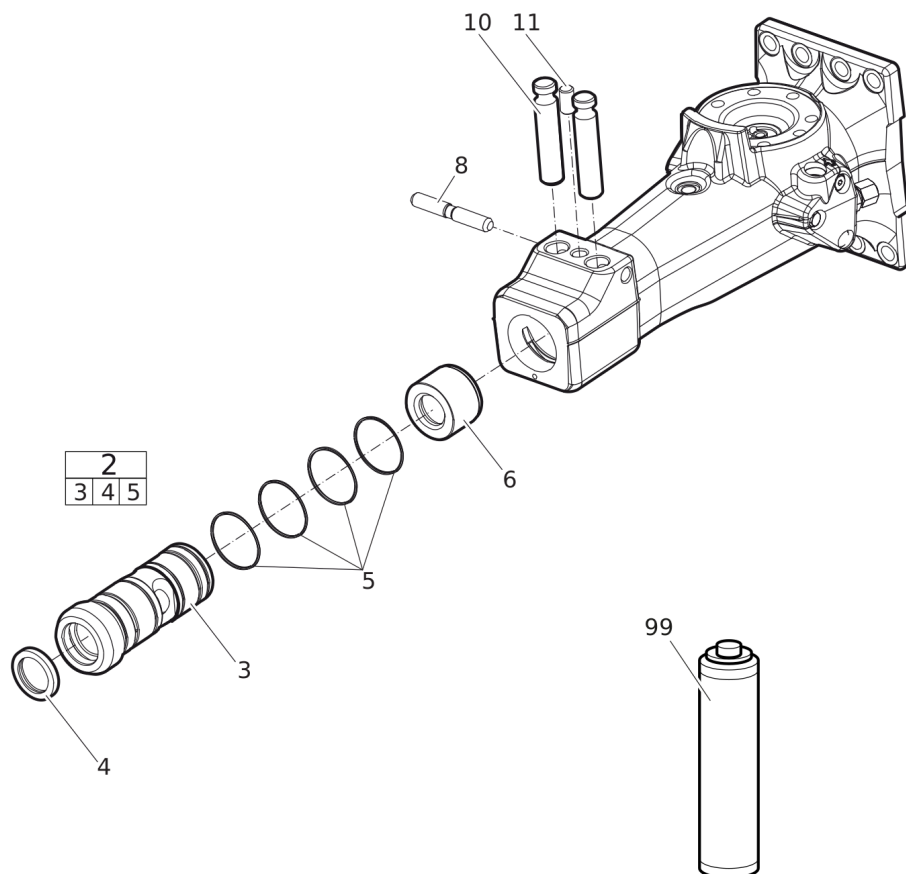


Refer to the DocMine web page for most up-to-date information. The printed information might be outdated.

Thu Mar 07 10:20:05 UTC 2024

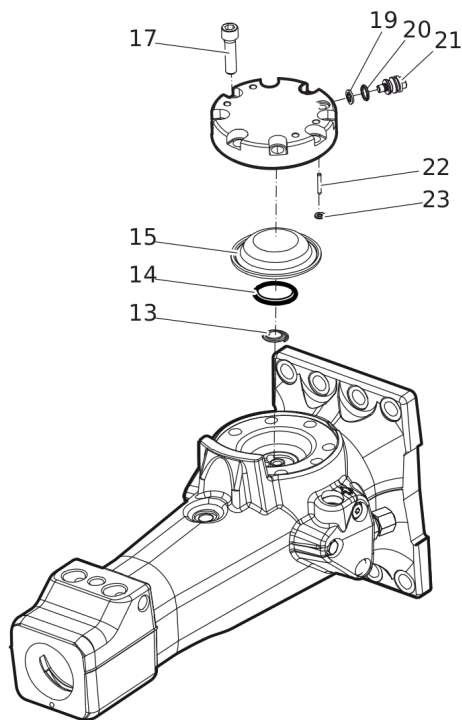
Item	Part No.	Name	Qty	L
KIT	3382070208	SEAL KIT	1	
4	3315356500	SCRAPER RING	1	
5	0663210289	O-RING	4	
19	3115329002	SEAL RING	1	
20	0663212000	O-RING	1	
23	0663211400	O-RING	1	
26	0663903201	O-RING	1	
27	0663905401	O-RING	1	
29	0663211489	O-RING	2	
31	0665909961	WIPER	1	
32	3315391001	PISTON ROD SEAL	1	
33	0663210576	O-RING	1	
35	0663211254	O-RING	8	
37	5750533164	PISTON ROD SEAL	1	
38	0663927900	O-RING	1	
42	3315280800	VALVE RUBBER	1	
50	0663903201	O-RING	1	
51	0663905401	O-RING	1	
56	0664000003	SEAL RING	2	
58	0665090014	SEAL RING	3	
59	3315305000	PLUG	1	

Service, repair and wear part kits Lower hammer part kit



Item	Part No.	Name	Qty	L
KIT	3315352121	LOWER HAMMER PART KIT	1	
2	3315353880	BUSHING, complete	1	
3		BUSHING	1	
4	3315356500	SCRAPER RING	1	
5	0663210289	O-RING	4	
6	3315298500	STOP RING	1	
8	3315293010	LOCK PIN	1	
10	3315300010	TOOL RETAINER	2	
11	3315304600	LOCK BUFFER	1	
99		BIO CHISEL PASTE CARTRIDGE, 1 x 400 g (0.88 lbs)	1	A

Service, repair and wear part kits Accumulator repair kit



Item	Part No.	Name	Qty	L
KIT	3382070209	ACCUMULATOR REPAIR KIT	1	
13	3315359610	COIL SPRING	1	
14	3315359521	DIAPHRAGM SUPPORT	1	
15	3315238200	DIAPHRAGM	1	
17	0211196534	HEX SOCK. SCREW	8	
19	3115329002	SEAL RING	1	
20	0663212000	O-RING	1	
21	3315366000	VALVE	1	
22	0101414000	PIN	1	
23	0663211400	O-RING	1	

This exploded view diagram illustrates the assembly of a mechanical component, likely a pump or valve. The main assembly is shown in the center, with various parts numbered 1 through 62. The diagram includes several sub-assembly boxes, each containing a table of part numbers:

- Top Left Box (54):**

54
55 56
- Bottom Left Box (48):**

48
49 50 51
- Top Right Box (24):**

24
25 26 27
- Bottom Right Box (45):**

45
46 47
- Bottom Left Box (2):**

2
3 4 5
- Bottom Center Box (40):**

40
41 42

The diagram also shows various other components and their assembly sequence, indicated by dashed lines and arrows. Key parts include a main housing (1), a central shaft (36), and various seals and bearings (5, 6, 7, 8, 9, 10, 11, 12, 13, 14, 15, 16, 17, 18, 19, 20, 21, 22, 23, 25, 26, 27, 28, 29, 30, 31, 32, 33, 34, 35, 37, 38, 39, 40, 41, 42, 43, 44, 46, 47, 48, 49, 50, 51, 52, 53, 54, 55, 56, 57, 58, 59, 60, 61, 62).

Item	Part No.	Name	Qty	L
1	-	HAMMER BODY	1	
2	3315353880	BUSHING, complete	1	
3	--	BUSHING, Ø 70.0 mm (Ø 2.76 in.)	1	
4	3315356500	SCRAPER RING	1	
5	0663210289	O-RING	4	
6	3315298500	STOP RING	1	
7	0686100016	PLUG	2	
8	3315293010	LOCK PIN	1	
9	0108169126	SPRING PIN, option	1	
10	3315300010	TOOL RETAINER	2	
11	3315304600	LOCK BUFFER	1	
12	0686371801	PLUG	3	
13	3315359610	COIL SPRING	1	
14	3315359521	DIAPHRAGM SUPPORT	1	
15	3315238200	DIAPHRAGM	1	
16	3315299710	ACCUMULATOR HOUSE	1	
17	0211196534	HEX SOCK. SCREW	8	
18	0686371805	PLUG	1	
19	3115329002	SEAL RING	1	
20	0663212000	O-RING	1	
21	3315366000	VALVE	1	
22	0101414000	PIN	1	
23	0663211400	O-RING	1	
24	3315335000	PRESSURE RELIEF VALVE, complete	1	A
25	--	PRESSURE RELIEF VALVE	1	
26	0663903201	O-RING	1	
27	0663905401	O-RING	1	
28	3315298710	CONTROL VALVE	1	
29	0663211489	O-RING	2	
30	3315365005	VALVE COVER	1	
31	0665909961	WIPER	1	
32	3315391001	PISTON ROD SEAL	1	
33	0663210576	O-RING	1	
34	3315298105	LINER	1	
35	0663211254	O-RING	8	
36	3315298305	PISTON	1	
37	5750533164	PISTON ROD SEAL	1	

Refer to the DocMine web page for most up-to-date information. The printed information might be outdated.

Thu Mar 07 10:20:06 UTC 2024

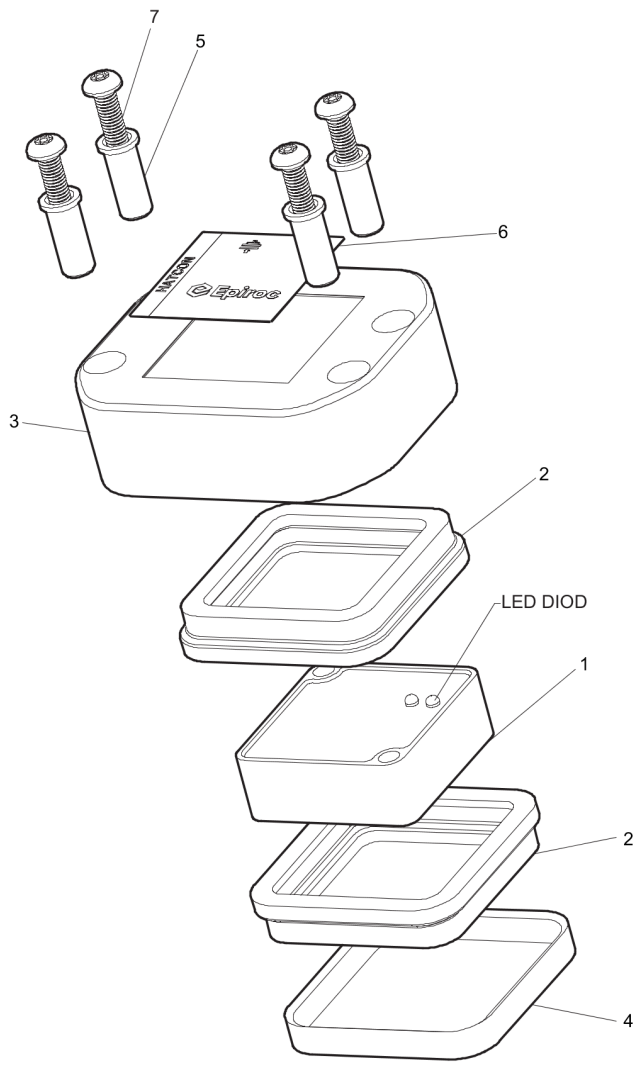
Item	Part No.	Name	Qty	L
38	0663927900	O-RING	1	
39	3315298205	BACK HEAD	1	
40	3315244881	CHECK VALVE, complete	1	
41	--	CHECK VALVE	1	
42	3315280800	VALVE RUBBER	1	
43	0147140503	SCREW, HEX HEAD	8	
44	3315322600	BASE PLATE WITH TROUGH BORINGS	1	
45	3315322100	BOLT KIT	1	
46	--	SCREW	8	
47		NUT, M16	8	
48	3315369541	RESTRICTOR, complete	1	
49		RESTRICTOR, Ø 4.1 mm (Ø 0.16 in.)	1	
50	0663903201	O-RING	1	
51	0663905401	O-RING	1	
52	0686644207	PLUG	4	
53	3360433774	GREASE NIPPLE	1	
54	0580001846	PIPE COUPLING	1	
55		NIPPLE	2	
56	0664000003	SEAL RING	2	
57	3361353486	CAP	2	
58	0665090014	SEAL RING	1	
59	3315305000	PLUG	1	
60	3315439145	PROTECTIVE PLUG HATCON	4	
61		HATCON LABEL	1	
62	0686100009	PLUG	2	

Comments for Page: Hydraulic breaker

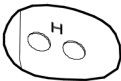
A | CAS No. see chapter "Environmental Product Compliance - REACH Declaration"

This page intentionally left blank

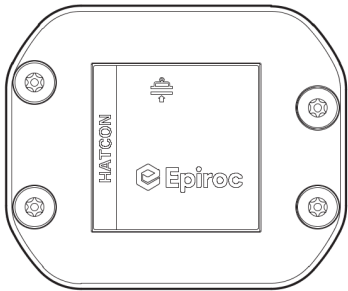
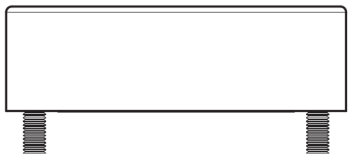
Mechanical HATCON (Horizontal)



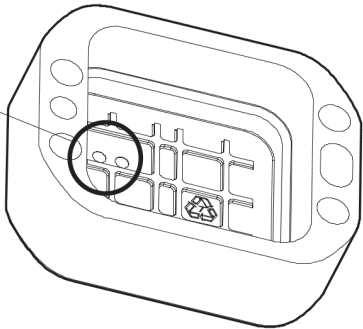
DETAIL A



Horizontal mounted.
Match diods on POS.1 to
match the recess marked H on POS .3

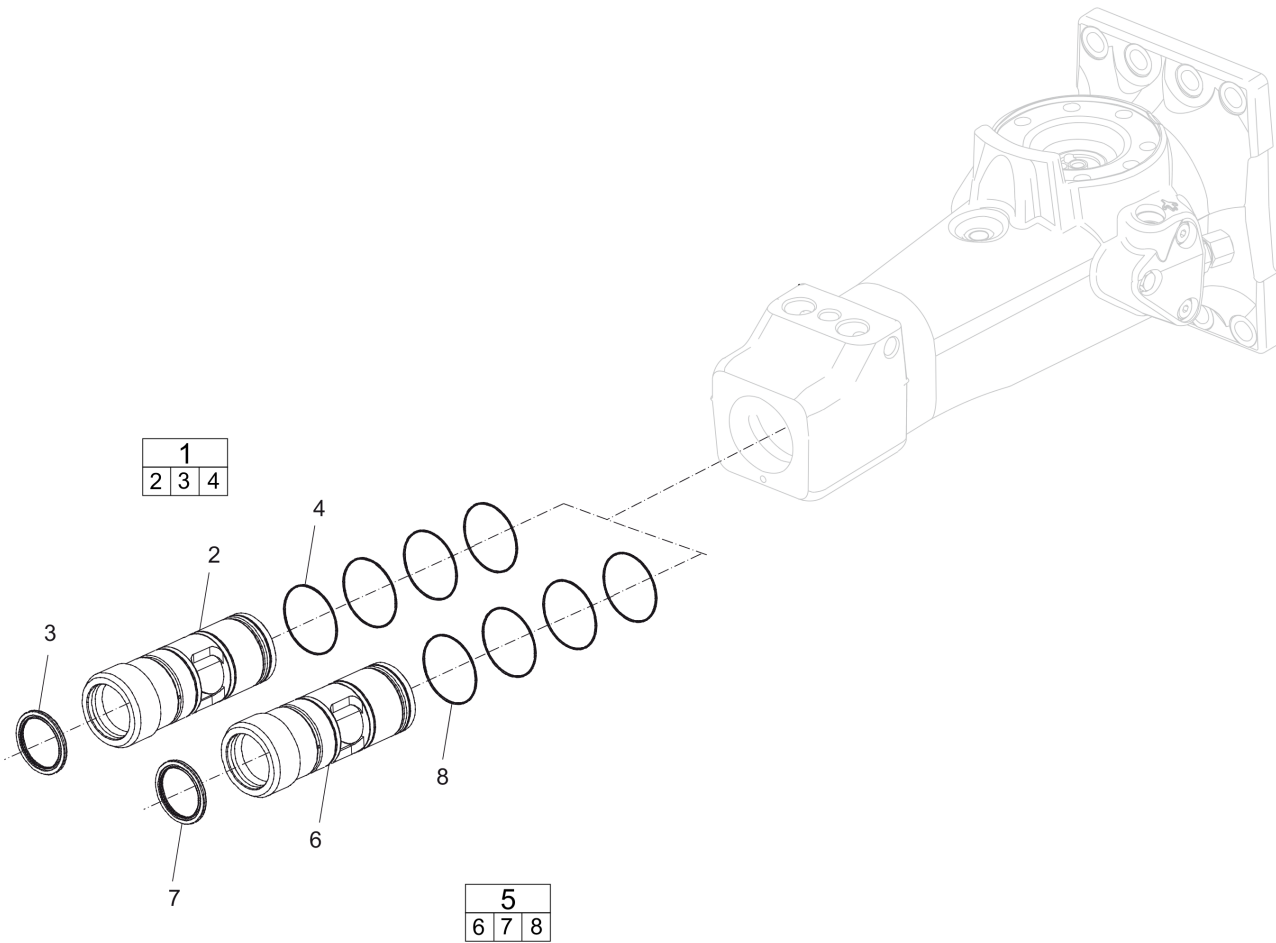


SEE DETAIL A



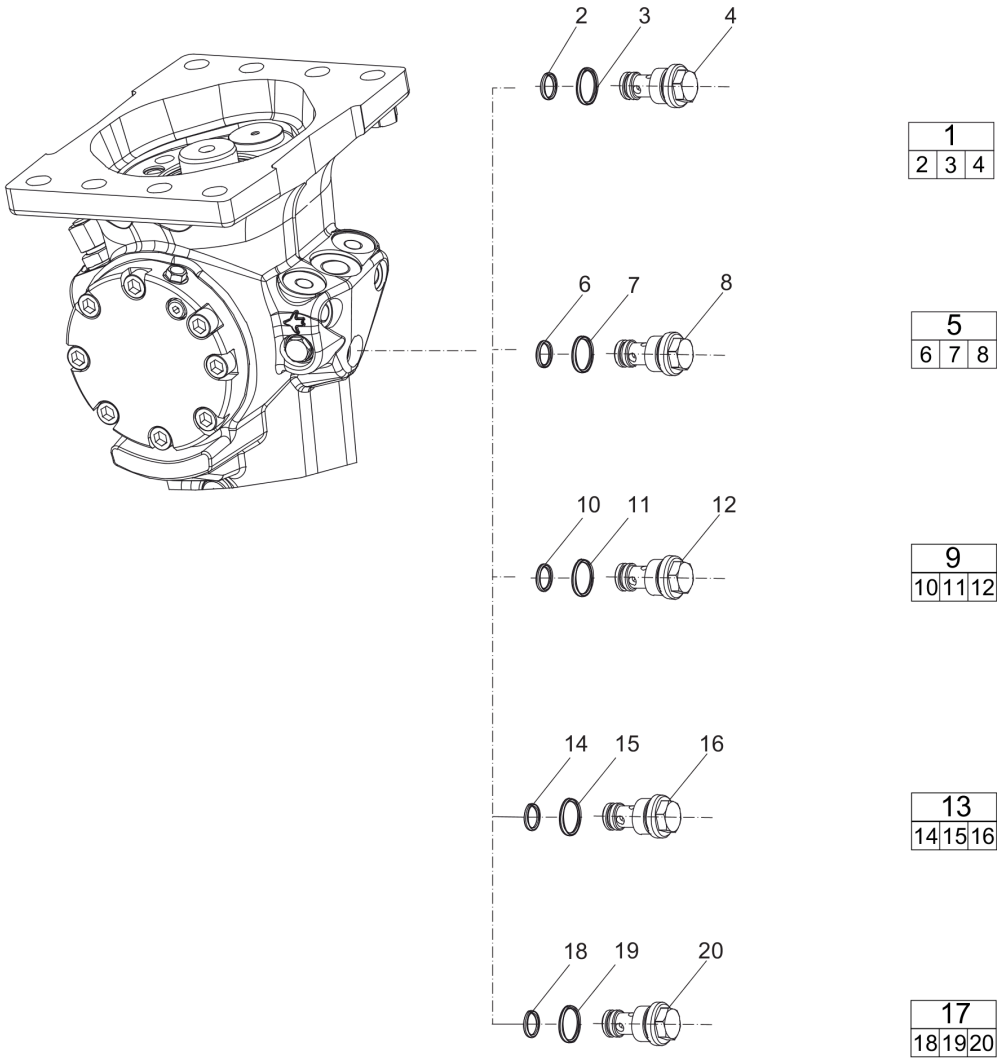
Item	Part No.	Name	Qty	L
1		TRACKING MODULE HATCON	1	
2	3315439130	DAMPER HATCON	2	
3	3315439117	HOUSING TYPE 2 HATCON	1	
4	3315439140	LOCK RING HATCON	1	
5	3315439120	SLEEVE HATCON	4	
6	3315439100	PRODUCT LABEL HATCON	1	
7	3315442600	SCREW HATCON	4	

Mechanical Bushing oversize, complete



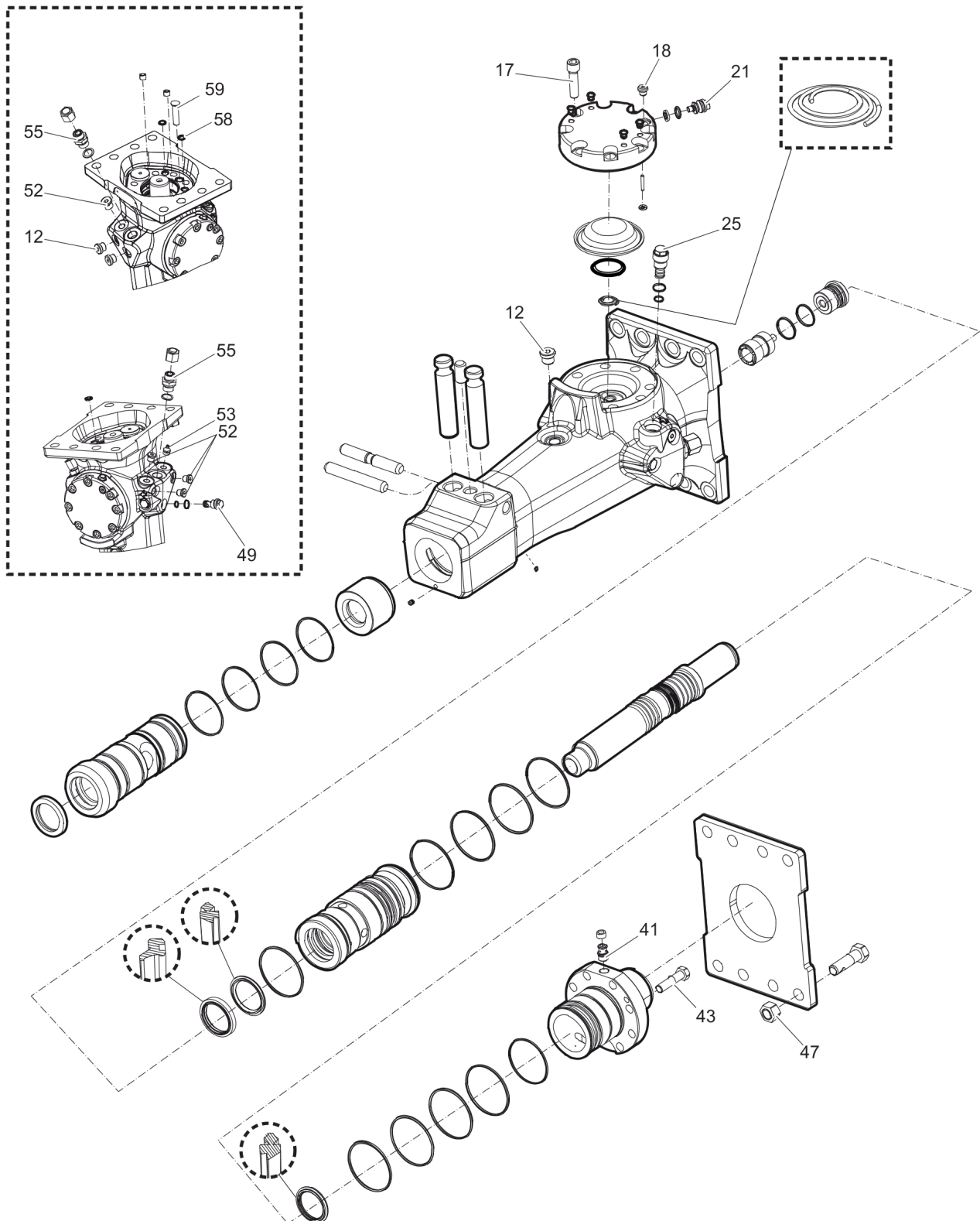
Item	Part No.	Name	Qty	L
1	3315353860	BUSHING OVERSIZE, complete	1	
2		BUSHING, Ø 71.5 mm (Ø 2.81 in.)	1	
3	3315356500	SCRAPER RING	1	
4	0663210289	O-RING	4	
5	3315353863	BUSHING OVERSIZE, complete	1	
6		BUSHING, Ø 73.0 mm (Ø 2.87 in.)	1	
7	3315356500	SCRAPER RING	1	
8	0663210289	O-RING	4	

Mechanical Restrictor, complete



Item	Part No.	Name	Qty	L
1	3315369536	RESTRICTOR, complete	1	
2	0663905401	O-RING	1	
3	0663903201	O-RING	1	
4		RESTRICTOR, Ø 3.0 mm (Ø 0.12 in.)	1	
5	3315369537	RESTRICTOR, complete	1	
6	0663905401	O-RING	1	
7	0663903201	O-RING	1	
8		RESTRICTOR, Ø 3.3 mm (Ø 0.13 in.)	1	
9	3315369538	RESTRICTOR, complete	1	
10	0663905401	O-RING	1	
11	0663903201	O-RING	1	
12		RESTRICTOR, Ø 3.8 mm (Ø 0.15 in.)	1	
13	3315369528	RESTRICTOR, complete	1	
14	0663905401	O-RING	1	
15	0663903201	O-RING	1	
16		RESTRICTOR, Ø 2.8 mm (Ø 0.11 in.)	1	
17	3315369541	RESTRICTOR, complete	1	
18	0663905401	O-RING	1	
19	0663903201	O-RING	1	
20		RESTRICTOR, Ø 4.1 mm (Ø 0.16 in.)	1	

Mechanical Tightening torque



Refer to the DocMine web page for most up-to-date information. The printed information might be outdated.

Thu Mar 07 10:20:08 UTC 2024

Item	Part No.	Name	Qty	L
12		PLUG - 80 Nm (59 ft lbf)	-	A
17		HEXAGON SOCKET PLUG - 120 Nm (89 ft lbf)	-	B
18		PLUG - 20 Nm (15 ft lbf)	-	
21		VALVE - 27 Nm (20 ft lbf)	-	
25		PRESSURE RELIEF VALVE - 60 Nm (44 ft lbf)	-	
41		CHECK VALVE - 30 Nm (22 ft lbf)	-	A
43		HEXAGON HEAD SCREW - 75 Nm (55 ft lbf)	-	B
47		NUT - 200 Nm (148 ft lbf)	-	
49		RESTRICTOR - 80 Nm (59 ft lbf)	-	
52		PLUG - 30 Nm (22 ft lbf)	-	A
53		GREASE NIPPLE - 30 Nm (22 ft lbf)	-	
55		NIPPLE - 120 Nm (89 ft lbf)	-	

Comments for Page: Tightening torque

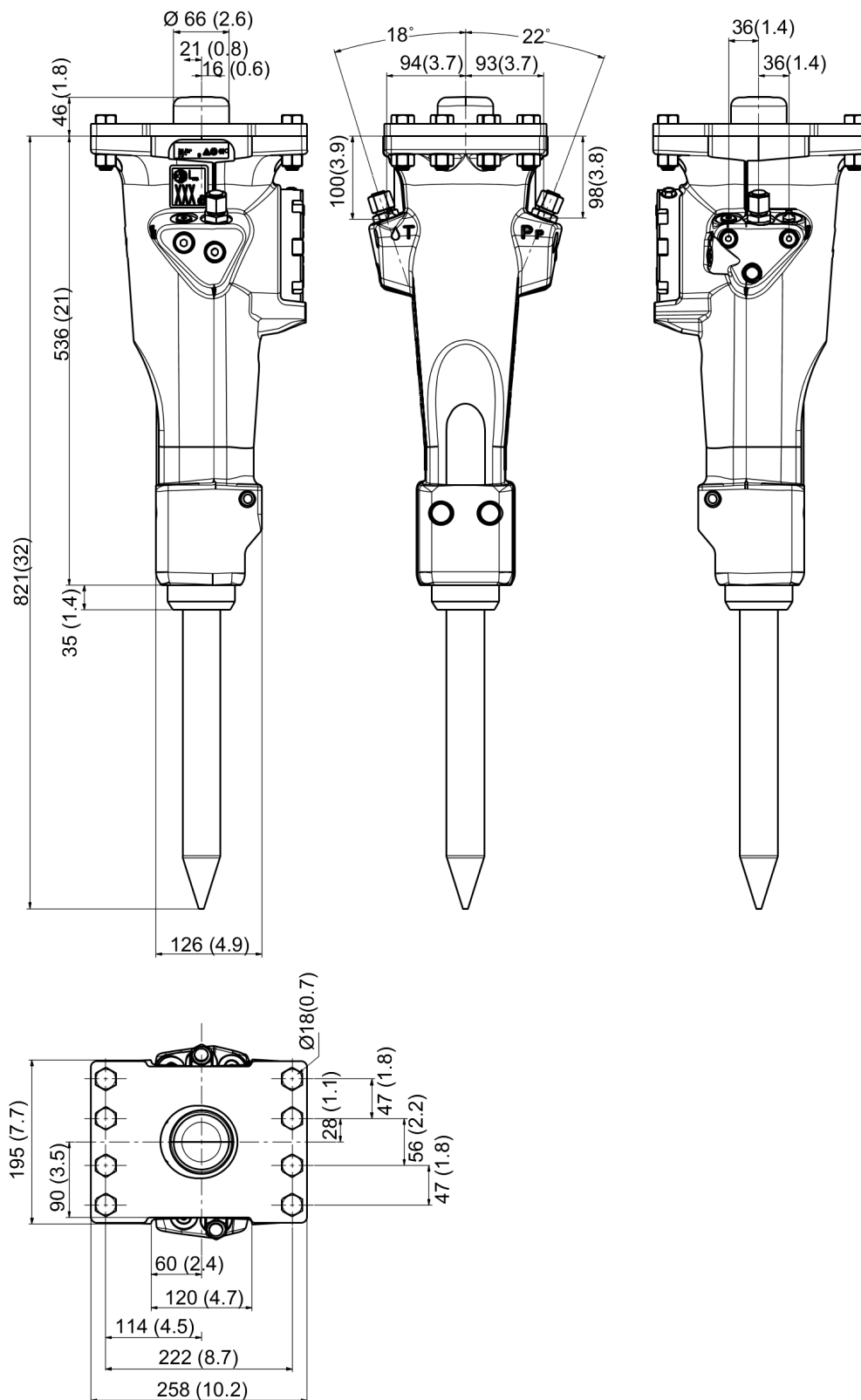
LOCTITE is a registered trademark of Henkel Corporation. 243 is a trademark of Henkel Corporation. Molykote is a registered trademark of Dow Corning Corporation.

(L)OCAL REMARKS

A | LOCTITE® 243™

B | Molykote®

Mechanical Dimensions

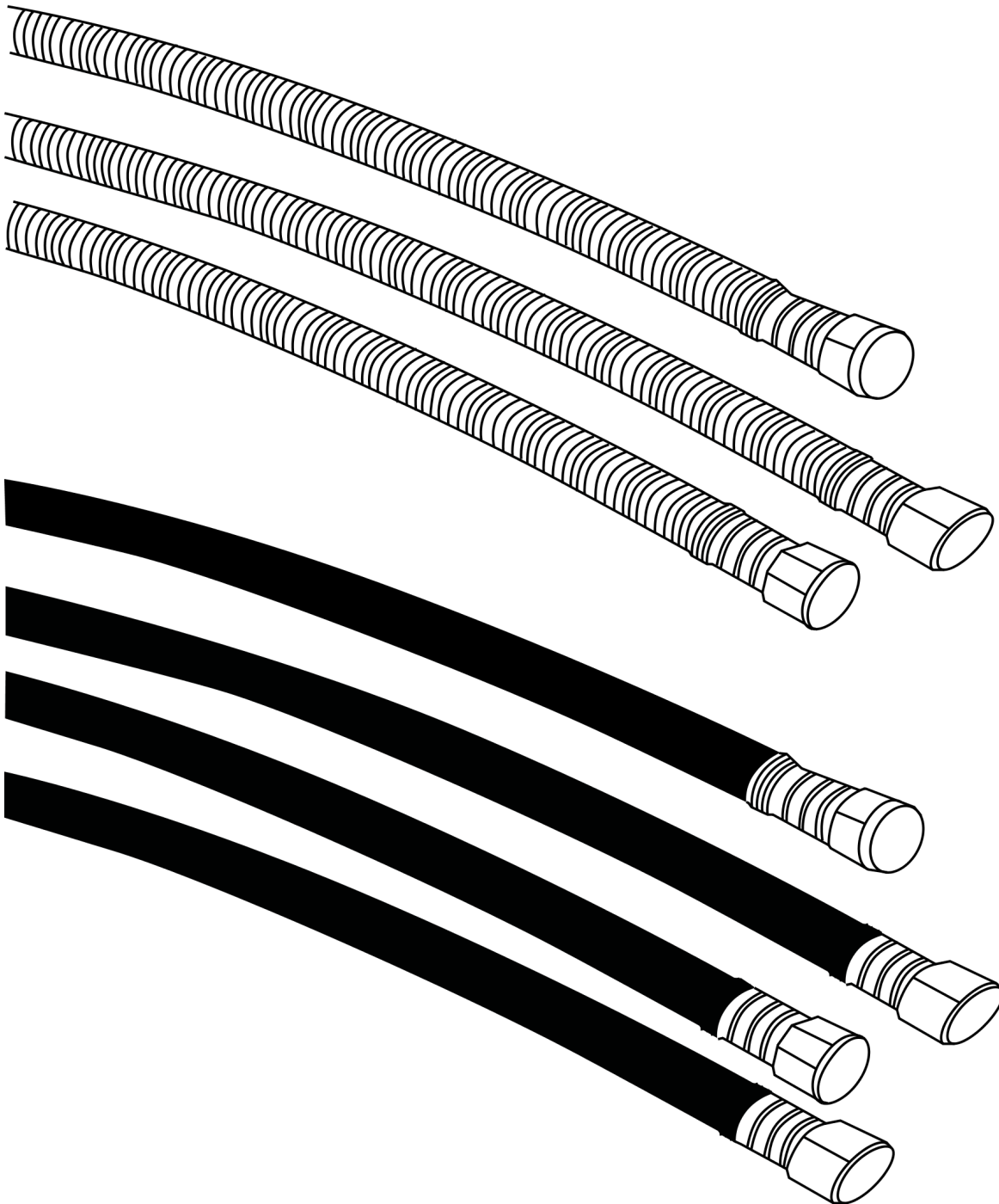


Refer to the DocMine web page for most up-to-date information. The printed information might be outdated.

Thu Mar 07 10:20:09 UTC 2024

This page intentionally left blank

Options/accessories Hydraulic hoses



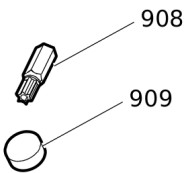
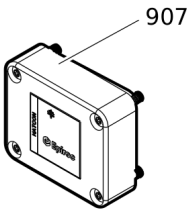
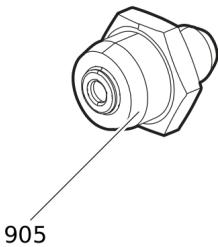
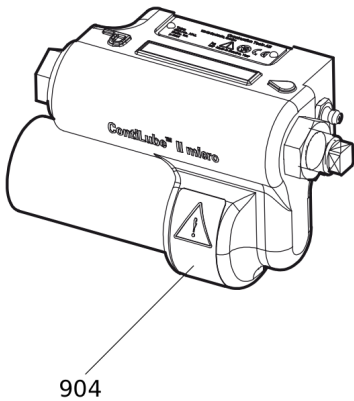
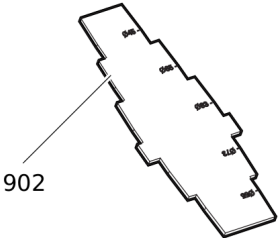
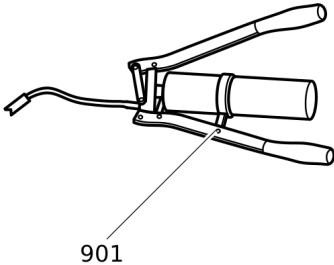
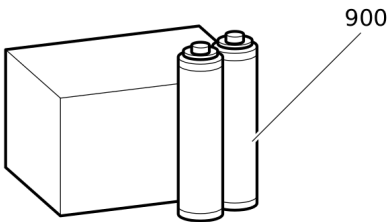
Item	Part No.	Name	Qty	L
	-	HEAVY DUTY CONNECTION HOSES	-	
-	3360995717	HYDRAULIC HOSE, both ends 18 L (M26 x 1.5) length 1500 mm (59 in.)	2	
-	3362235159	HYDRAULIC HOSE, both ends 18 L (M26 x 1.5) length 2000 mm (79 in.)	2	
-	3363115426	HYDRAULIC HOSE, both ends 18 L (M26x1.5) length 1750 mm (68 in.)	2	
-	3363083313	HYDRAULIC HOSE, both ends 18 L (M26 x 1.5) length 2400 mm (95 in.)	2	
	-	STANDARD CONNECTION HOSES	-	
-	3363491002	HYDRAULIC HOSE, both ends 18 L (M26x1.5) length 1500 mm (59 in.)	2	
-	3363115423	HYDRAULIC HOSE, both ends 18 L (M26x1.5) length 1750 mm (68 in.)	2	
-	3363115424	HYDRAULIC HOSE, both ends 18 L (M26x1.5) length 2000 mm (79 in.)	2	
-	3363115425	HYDRAULIC HOSE, both ends 18 L (M26x1.5) length 2400 mm (95 in.)	2	
-	3363098018	ADDITIONAL FITTING KIT	1	A

Comments for Page: Hydraulic hoses

(L)OCAL REMARKS

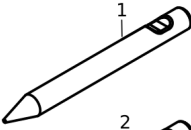
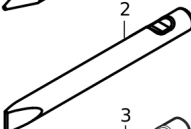
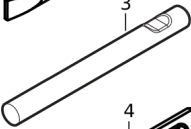
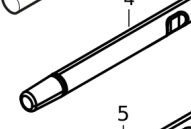
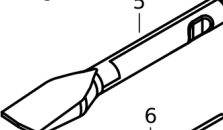
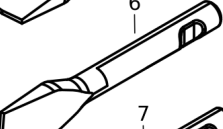
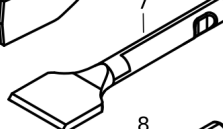
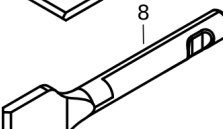
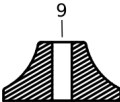
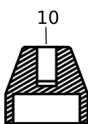
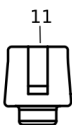

A | Needed to fit two hoses to the hydraulic breaker

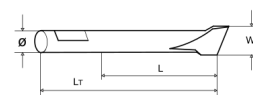
Options/accessories Optional equipment



Item	Part No.	Name	Qty	L
900	3363122354	BIO CHISEL PASTE, 20 x 150 g (0.33 lbs)	1	
900	3363122355	BIO CHISEL PASTE CARTRIDGE FOR GREASE GUN, 12 x 400 g (0.88 lbs)	1	
-	3363122357	BIO CHISEL PASTE CONTAINER 15 kg (33 lbs)	1	
-	3363122358	BIO CHISEL PASTE CONTAINER 45 kg (99 lbs)	1	
901	0909107100	LUBRICAT.GUN	1	
902	3315353100	BUSHING WEAR CONTROLLER	1	
904	3315383190	CONTILUBE II MICRO	1	
905	3363094459	NIPPLE, for charging the accumulator	1	
-	3360920415	FILLING DEVICE, for accumulator	1	
-	3361329803	FILLING HOSE, for charging the accumulator	1	
907	3315442503	HATCON KIT 3 2G/3G	1	
907	3315442522	HATCON KIT 3 (LTE, 2G/4G)	1	
908	3315439105	SECURITY BIT HATCON	1	
909	3315439106	MAGNET HATCON	1	

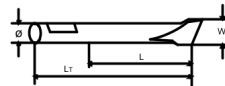
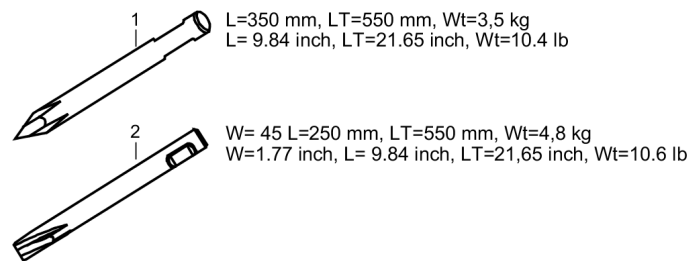
Options/accessories Working tools ClassicLine

	L=265 mm, LT=465 mm, Wt=5,0 kg L= 10.43 inch, LT=18.31 inch, Wt=11.0 lb
	W= 45 mm, L=265 mm, LT=465 mm, Wt=6,0 kg W=1.77 inch, L= 10.43 inch, LT=18.31 inch, Wt=13.2 lb
	L=265 mm, LT=465 mm, Wt=5,0 kg L= 10.43 inch, LT=18.31 inch, Wt=11.0 lb
	LT=465 mm, Wt=5,2 kg LT=18.31 inch, Wt=11.5 lb
	W=75 mm, L=320 mm, LT=520 mm, Wt=6.1 kg W=2.95 inch, L=12.6 inch, LT=20.47 inch, Wt=13.4 lb
	W=75 mm, L=350 mm, LT=550 mm, Wt=6.1kg W=2.95 inch, L=13.78 inch, LT=20.47 inch, Wt=13.4 lb
	W=120 mm, L=280 mm, LT=480 mm, Wt=5.7 kg W=4.72 inch, L=11.02 inch, LT=18.9 inch, Wt=12.6 lb
	W=120 mm, L=280 mm, LT=480 mm, Wt=5.7 kg W=4.72 inch, L=11.02 inch, LT=18.9 inch, Wt=12.6 lb
	W= Ø200 mm, Wt=15 kg W=Ø7.87 inch, Wt=33.1 lb
	W=Ø100 mm, Wt=8.5 kg W=Ø3.94 inch, Wt=18.7 lb
	W=Ø50 mm, Wt=3.3 kg W=Ø1.97 inch, Wt=7.3 lb
	W=Ø90 mm, Wt=4.1 kg W=Ø3.54 inch, Wt=9.0 lb



Item	Part No.	Name	Qty	L
1	3083342410	MOIL POINT	1	
2	3083342411	CHISEL (cross)	1	
3	3083342412	BLUNT TOOL	1	
4	3315370001	SHAFT	1	
5	3083340910	WIDE CHISEL (cross)	1	
6	3083340911	WIDE CHISEL (parallel)	1	
7	3083340912	ASPHALT CUTTER (cross)	1	
8	3083340913	ASPHALT CUTTER (parallel)	1	
9	3315370600	TAMPING PAD (square)	1	
10	3315371400	POST DRIVER PAD (round)	1	
11	3315372100	PILE DRIVER PAD (round)	1	
12	3315372800	BUSHING PAD (round)	1	

Options/accessories Working tools ProLine



Item	Part No.	Name	Qty	L
1	3363120259	MOIL POINT (X-profile)	1	
2	3363120260	CHISEL (X-profile)	1	

Annex Environmental Product Compliance - REACH Declaration

NO EXPLODED VIEW
AVAILABLE
FOR THIS BOM

Item	Part No.	Name	Qty	L
36	-	PRESSURE RELIEF VALVE, complete, Part No. 3315335000 - CAS No. 7439-92-1	-	

Comments for Page: Environmental Product Compliance - REACH Declaration

EU REACH Candidate List substances present in product listed above.

Any unauthorized use or copying of the contents or any part thereof is prohibited.
This applies in particular to trademarks, model denominations, part numbers, and drawings.