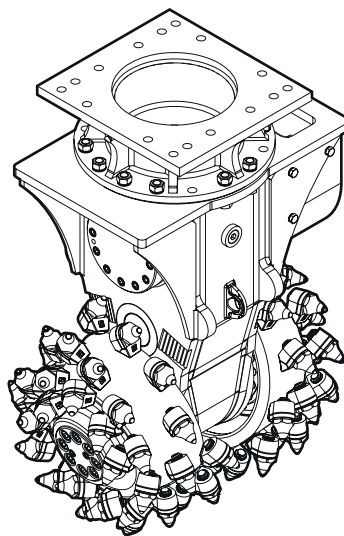


# VC 3000

---

## Spare parts list Transverse Drum Cutters

VC 3000 s/n DGR286437 -



# General information

This spare parts list applies to the following:

## Description

VC 3000 - 1

VC 3000 - 2

VC 3000 - 3

Use only authorized parts. Any damage or malfunction caused by the use of unauthorized parts is not covered by Warranty or Product Liability. Any unauthorized use or copying of the contents or any part thereof is prohibited. This applies in particular to trademarks, model denominations, part numbers, and drawings.

## Instructions for use

This spare parts list contains no safety regulations and is merely intended to assist in the ordering of spare parts.

For information about operating, servicing, or repairing, the relevant Safety and operating instructions must be consulted at all costs.

Please observe the safety instructions listed in the relevant Safety and operating instructions!

**Service, repair and wear part kits**

Label kit	1
Kit list	3

**Mechanical**

Transverse Drum Cutter, part 1 (Rotatable upper part)	7
Transverse Drum Cutter, part 1 (Intermediate bracket)	11
Transverse Drum Cutter, part 2 (Rotatable upper part)	15
Transverse Drum Cutter, part 2 (Intermediate bracket)	17
Transverse Drum Cutter, part 3 (Rotatable upper part)	19
Transverse Drum Cutter, part 3 (Intermediate bracket)	21
HATCON	23
Tightening torques	25
Dimensions (Rotatable upper part)	27
Dimensions (Intermediate bracket)	28

**Options / accessories**

Picks and retainers kits	30
Tools for picks	35
Optional equipment	37

Service, repair and wear part kits Label kit

NO EXPLODED VIEW  
AVAILABLE  
FOR THIS BOM

Item	Part No.	Name	Qty	L
KIT	3311006421	Label kit	1	

Service, repair and wear part kits Kit list

NO EXPLODED VIEW  
AVAILABLE  
FOR THIS BOM

Item	Part No.	Name	Qty	L
KIT	3311006411	Adjustment cover kit	1	
48		Cover	1	
57	3311000682	Allen screw	12	
59	3311000658	O-ring	1	
KIT	3311006412	Seal kit drive shaft	1	
57	3311000682	Allen screw	16	
60	3311000691	O-ring	1	
63	3311000692	Seal	1	
90	3311000537	O-ring	1	
91	3311000687	O-ring	2	
KIT	3311006413	Drive shaft compl.	1	
45		Drive shaft	1	
48	3311001598	Cover	1	
49	3311000395	Flange (motor)	1	
50	3311006378	Distance sleeve	2	
57	3311000682	Allen screw	28	
59	3311000658	O-ring	1	
60	3311000691	O-ring	1	
63	3311000692	Seal	1	
KIT	3311001204	Motor complete	1	A
79		Cover (motor)	1	
81		Distribution housing (motor)	1	
82	3311002963	Cam ring	1	A
85		Cylinder block	1	
86	3311000203	Tension pin (motor)	2	
87	3311000502	Hexagon head screw	5	
88	3311000683	Allen screw	10	
90	3311000537	O-ring	1	
91	3311000687	O-ring	2	
92	3311000204	Fitting sleeve (motor)	2	
KIT	3311001205	Motor complete	1	B
79		Cover (motor)	1	
81		Distribution housing (motor)	1	
82	3311000189	Cam ring	1	B
85		Cylinder block	1	
86	3311000203	Tension pin (motor)	2	
87	3311000502	Hexagon head screw	5	

Refer to the DocMine web page for most up-to-date information. The printed information might be outdated.

Thu Feb 29 09:42:51 UTC 2024

Item	Part No.	Name	Qty	L
88	3311000683	Allen screw	10	
90	3311000537	O-ring	1	
91	3311000687	O-ring	2	
92	3311000204	Fitting sleeve (motor)	2	
KIT	3311001206	Motor complete	1	C
79		Cover (motor)	1	
81		Distribution housing (motor)	1	
82	3311000190	Cam ring	1	C
85		Cylinder block	1	
86	3311000203	Tension pin (motor)	2	
87	3311000502	Hexagon head screw	5	
88	3311000683	Allen screw	10	
90	3311000537	O-ring	1	
91	3311000687	O-ring	2	
92	3311000204	Fitting sleeve (motor)	2	
KIT	3311006414	Overpressure cover compl.	1	
79		Cover (motor)	1	
87	3311000502	Hexagon head screw	5	
90	3311000537	O-ring	1	
KIT	3311006415	Wear sleeve kit	1	
36	3311000801	Wear sleeve	72	
KIT	3311006386	Output unit cpl.	1	
10		Output shaft	1	
11	3311006350	Bushing	8	
12	3311006347	Bevel gear	1	
13		Housing (output shaft)	1	
14	3311000326	Sealing cover	1	
17	3311006348	Inner race (tapered roller bearing)	2	
20	3311000589	Seal	1	
21	3311001934	Allen screw	8	
22	3311002498	Allen screw	24	
24	3311000628	Allen screw	8	
25	3311000591	Allen screw	4	
26	3311000592	Usit-ring	12	
27	3311004952	O-ring	1	
28	3311000594	O-ring	1	
34	3311003512	Bolt	2	

Refer to the DocMine web page for most up-to-date information. The printed information might be outdated.

Thu Feb 29 09:42:51 UTC 2024



Item	Part No.	Name	Qty	L
KIT	3311006417	Drum fastening kit	1	
66	3311002938	Cover	16	
67	3311001960	Clamping sleeve	16	
75	3311001961	Allen screw	16	
78	3311000551	Allen screw	4	
94	3311000533	Pair of lock washers	4	
KIT	3311006159	Seal kit output shaft	1	
14	3311000326	Sealing cover	2	
20	3311000589	Seal	2	
24	3311000628	Allen screw	16	
25	3311000591	Allen screw	8	
26	3311000592	Usit-ring	24	
28	3311000594	O-ring	2	

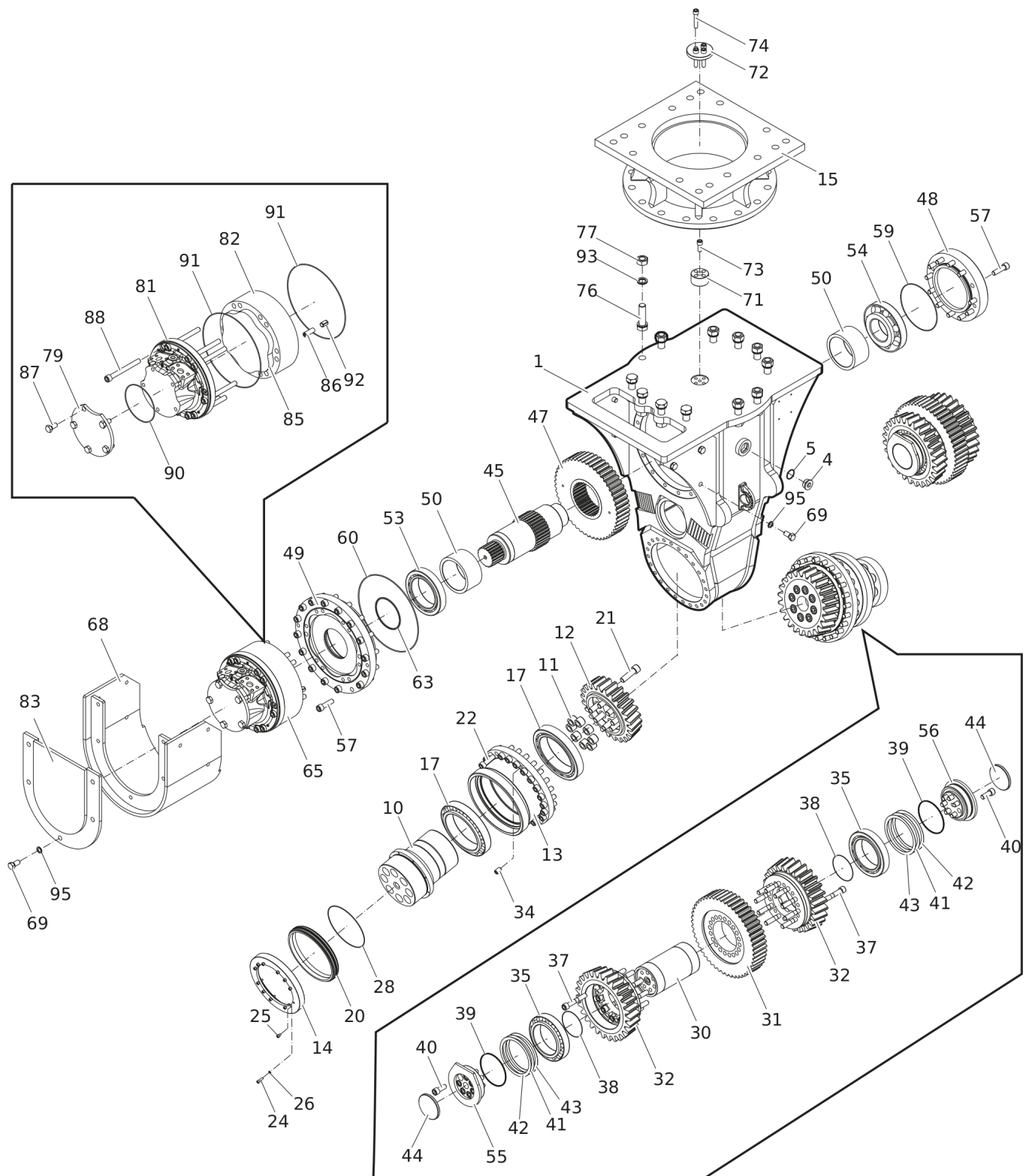
Comments for Page: Kit list

A | VC 3000 - 1

B | VC 3000 - 2

C | VC 3000 - 3

## Mechanical Transverse Drum Cutter, part 1 (Rotatable upper part)



Refer to the DocMine web page for most up-to-date information. The printed information might be outdated.

Thu Feb 29 09:42:52 UTC 2024

Item	Part No.	Name	Qty	L
1	3311006380	Gear housing	1	
4	3311000583	Plug	2	
5	3311000584	Seal	2	
10		Output shaft	2	I
11	3311006350	Bushing	16	
12	3311006347	Bevel gear	2	
13		Housing (output shaft)	2	I
14	3311000326	Sealing cover	2	
15	3311000951	Rotatable upper part	1	
17	3311006348	Inner race (tapered roller bearing)	4	
20	3311000589	Seal	2	
21	3311001934	Allen screw	16	
22	3311002498	Allen screw	48	
24	3311000628	Allen screw	16	
25	3311000591	Allen screw	8	
26	3311000592	Usit-ring	24	
27	3311004952	O-ring	2	
28	3311000594	O-ring	2	
30	3311006388	Idle cogwheel pin	1	
31	3311006375	Idle cogwheel	1	
32	3311006346	Bevel gear	2	
34	3311003512	Bolt	4	
35	3311000689	Tapered roller bearing	2	
37	3311006389	Bolt	20	
38	3311006355	O-ring	2	
39	3311006356	Seal	2	
40	3311003718	Allen screw	14	
41	3311006393	Spacer	5	
42	3311006394	Spacer	5	
43	3311006395	Spacer	5	
44	3311006392	Cover	2	
45		Drive shaft	1	F
47	3311006376	Spur gear	1	
48		Cover	1	E
49	3311000395	Flange (motor)	1	
50	3311006378	Distance sleeve	2	
53	3311000689	Tapered roller bearing	1	

Refer to the DocMine web page for most up-to-date information. The printed information might be outdated.

Thu Feb 29 09:42:52 UTC 2024

Item	Part No.	Name	Qty	L
54	3311000657	Tapered roller bearing	1	
55	3311006390	Cover (left)	1	
56	3311006391	Cover (right)	1	
57	3311000682	Allen screw	28	
59	3311000658	O-ring	1	
60	3311000691	O-ring	1	
63	3311000692	Seal	1	
65	3311001204	Motor complete	1	B, D
65	3311001205	Motor complete	1	B, D
65	3311001206	Motor complete	1	C, D
68	3311006406	Cover (motor)	1	
69	3311000502	Hexagon head screw	11	
71	3311000341	Centering pin	1	
72	3311000342	Plate (centering pin)	1	
73	3311002937	Allen screw	1	
74	3311001065	Allen screw	4	
76	3311006240	Hexagon head screw	12	
77	3311002686	Hexagonal nut	12	
79		Cover (motor)	1	G, H
81		Distribution housing (motor)	1	G
82	3311002963	Cam ring	1	A
82	3311000189	Cam ring	1	B
82	3311000190	Cam ring	1	C
83	3311006422	Cover	1	
85		Cylinder block	1	G
86	3311000203	Tension pin (motor)	2	
87	3311000502	Hexagon head screw	5	
88	3311000683	Allen screw	10	
90	3311000537	O-ring	1	
91	3311000687	O-ring	2	
92	3311000204	Fitting sleeve (motor)	2	
93	3311000521	Pair of lock washers	24	
95	3311000532	Pair of lock washers	11	

Comments for Page: Transverse Drum Cutter, part 1 (Rotatable upper part)

A | VC 3000 - 1

B | VC 3000 - 2

Refer to the DocMine web page for most up-to-date information. The printed information might be outdated.

Thu Feb 29 09:42:53 UTC 2024

C | VC 3000 - 3

D | with item 79-82 and 85-92

E | see Adjustment cover kit

F | see Drive shaft compl.

G | see Motor complete

H | see Overpressure cover compl.

I | see Output unit cpl.

This technical drawing is an exploded view of a mechanical assembly, likely a pump or motor component. It features numerous numbered parts (1 through 99) and three callout boxes labeled A, B, and C, which provide detailed views of specific sub-assemblies.

**Callout A:** Located in the top left, it shows a detailed view of a circular component (1) with a central shaft (81) and a flange (82). Other parts shown include 88, 89, 90, 91, 92, and 93.

**Callout B:** Located in the bottom left, it shows a detailed view of a U-shaped component (68) with a flange (69) and a shaft (70). Other parts shown include 71, 72, 73, 74, 75, 76, 77, 78, 79, 80, 81, 82, 83, 84, 85, 86, 87, 88, 89, 90, 91, 92, 93, 94, 95, 96, 97, 98, and 99.

**Callout C:** Located in the bottom right, it shows a detailed view of a gear assembly (30) with a shaft (31) and a housing (32). Other parts shown include 33, 34, 35, 36, 37, 38, 39, 40, 41, 42, 43, 44, 45, 46, 47, 48, 49, 50, 51, 52, 53, 54, 55, 56, 57, 58, 59, 60, 61, 62, 63, 64, 65, 66, 67, 68, 69, 70, 71, 72, 73, 74, 75, 76, 77, 78, 79, 80, 81, 82, 83, 84, 85, 86, 87, 88, 89, 90, 91, 92, 93, 94, 95, 96, 97, 98, and 99.

The main assembly includes a central housing (1) with a flange (2) and a shaft (3). The shaft is connected to a gear (4) which meshes with a larger gear (5). The gear (5) is mounted on a shaft (6) which is connected to a housing (7). The housing (7) has a flange (8) and a shaft (9). The shaft (9) is connected to a gear (10) which meshes with a larger gear (11). The gear (11) is mounted on a shaft (12) which is connected to a housing (13). The housing (13) has a flange (14) and a shaft (15). The shaft (15) is connected to a gear (16) which meshes with a larger gear (17). The gear (17) is mounted on a shaft (18) which is connected to a housing (19). The housing (19) has a flange (20) and a shaft (21). The shaft (21) is connected to a gear (22) which meshes with a larger gear (23). The gear (23) is mounted on a shaft (24) which is connected to a housing (25). The housing (25) has a flange (26) and a shaft (27). The shaft (27) is connected to a gear (28) which meshes with a larger gear (29). The gear (29) is mounted on a shaft (30) which is connected to a housing (31). The housing (31) has a flange (32) and a shaft (33). The shaft (33) is connected to a gear (34) which meshes with a larger gear (35). The gear (35) is mounted on a shaft (36) which is connected to a housing (37). The housing (37) has a flange (38) and a shaft (39). The shaft (39) is connected to a gear (40) which meshes with a larger gear (41). The gear (41) is mounted on a shaft (42) which is connected to a housing (43). The housing (43) has a flange (44) and a shaft (45). The shaft (45) is connected to a gear (46) which meshes with a larger gear (47). The gear (47) is mounted on a shaft (48) which is connected to a housing (49). The housing (49) has a flange (50) and a shaft (51). The shaft (51) is connected to a gear (52) which meshes with a larger gear (53). The gear (53) is mounted on a shaft (54) which is connected to a housing (55). The housing (55) has a flange (56) and a shaft (57). The shaft (57) is connected to a gear (58) which meshes with a larger gear (59). The gear (59) is mounted on a shaft (60) which is connected to a housing (61). The housing (61) has a flange (62) and a shaft (63). The shaft (63) is connected to a gear (64) which meshes with a larger gear (65). The gear (65) is mounted on a shaft (66) which is connected to a housing (67). The housing (67) has a flange (68) and a shaft (69). The shaft (69) is connected to a gear (70) which meshes with a larger gear (71). The gear (71) is mounted on a shaft (72) which is connected to a housing (73). The housing (73) has a flange (74) and a shaft (75). The shaft (75) is connected to a gear (76) which meshes with a larger gear (77). The gear (77) is mounted on a shaft (78) which is connected to a housing (79). The housing (79) has a flange (80) and a shaft (81). The shaft (81) is connected to a gear (82) which meshes with a larger gear (83). The gear (83) is mounted on a shaft (84) which is connected to a housing (85). The housing (85) has a flange (86) and a shaft (87). The shaft (87) is connected to a gear (88) which meshes with a larger gear (89). The gear (89) is mounted on a shaft (90) which is connected to a housing (91). The housing (91) has a flange (92) and a shaft (93). The shaft (93) is connected to a gear (94) which meshes with a larger gear (95). The gear (95) is mounted on a shaft (96) which is connected to a housing (97). The housing (97) has a flange (98) and a shaft (99).

Thu Feb 29 09:42:53 UTC 2024

Item	Part No.	Name	Qty	L
1	3311006380	Gear housing	1	
4	3311000583	Plug	2	
5	3311000584	Seal	2	
10		Output shaft	2	I
11	3311006350	Bushing	16	
12	3311006347	Bevel gear	2	
13		Housing (output shaft)	2	I
14	3311000326	Sealing cover	2	
15	3311005724	Intermediate bracket	1	
17	3311006348	Inner race (tapered roller bearing)	4	
20	3311000589	Seal	2	
21	3311001934	Allen screw	16	
22	3311002498	Allen screw	48	
24	3311000628	Allen screw	16	
25	3311000591	Allen screw	8	
26	3311000592	Usit-ring	24	
27	3311004952	O-ring	2	
28	3311000594	O-ring	2	
30	3311006388	Idle cogwheel pin	1	
31	3311006375	Idle cogwheel	1	
32	3311006346	Bevel gear	2	
34	3311003512	Bolt	4	
35	3311000689	Tapered roller bearing	2	
37	3311006389	Bolt	20	
38	3311006355	O-ring	2	
39	3311006356	Seal	2	
40	3311003718	Allen screw	14	
41	3311006393	Spacer	5	
42	3311006394	Spacer	5	
43	3311006395	Spacer	5	
44	3311006392	Cover	2	
45		Drive shaft	1	F
47	3311006376	Spur gear	1	
48		Cover	1	E
49	3311000395	Flange (motor)	1	
50	3311006378	Distance sleeve	2	
52	3311005634	Rubber plate	1	

Refer to the DocMine web page for most up-to-date information. The printed information might be outdated.

Thu Feb 29 09:42:53 UTC 2024

Item	Part No.	Name	Qty	L
53	3311000689	Tapered roller bearing	1	
54	3311000657	Tapered roller bearing	1	
55	3311006390	Cover (left)	1	
56	3311006391	Cover (right)	1	
57	3311000682	Allen screw	28	
59	3311000658	O-ring	1	
60	3311000691	O-ring	1	
61	3311005920	Cover	1	
62	3311001222	Socket head bolt	8	
63	3311000692	Seal	1	
64	3311005633	Flat steel	2	
65	3311001204	Motor complete	1	A, D
65	3311001205	Motor complete	1	B, D
65	3311001206	Motor complete	1	C, D
68	3311006406	Cover (motor)	1	
69	3311000502	Hexagon head screw	11	
76	3311006240	Hexagon head screw	12	
77	3311002686	Hexagonal nut	12	
79		Cover (motor)	1	G, H
81		Distribution housing (motor)	1	G
82	3311002963	Cam ring	1	A
82	3311000189	Cam ring	1	B
82	3311000190	Cam ring	1	C
83	3311006422	Cover	1	
85		Cylinder block	1	G
86	3311000203	Tension pin (motor)	2	
87	3311000502	Hexagon head screw	5	
88	3311000683	Allen screw	10	
90	3311000537	O-ring	1	
91	3311000687	O-ring	2	
92	3311000204	Fitting sleeve (motor)	2	
93	3311000521	Pair of lock washers	24	
95	3311000532	Pair of lock washers	11	
96	3311005921	Cover	1	
97	3311002512	Socket head bolt	4	
99	3311000533	Pair of lock washers	12	

Refer to the DocMine web page for most up-to-date information. The printed information might be outdated.

Thu Feb 29 09:42:54 UTC 2024



---

Comments for Page: Transverse Drum Cutter, part 1 (Intermediate bracket)

A | VC 3000 - 1

B | VC 3000 - 2

C | VC 3000 - 3

D | with item 79-82 and 85-92

E | see Adjustment cover kit

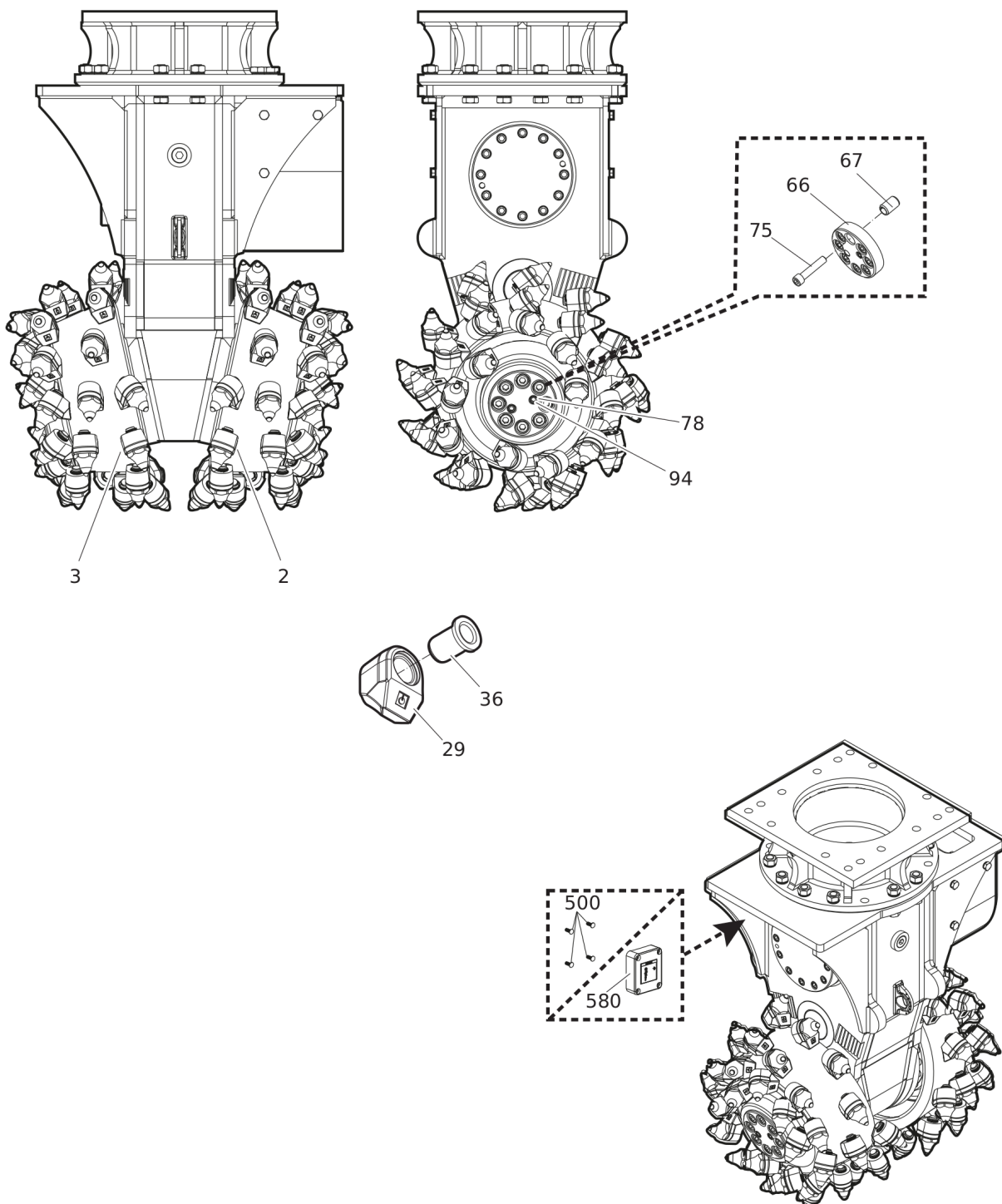
F | see Drive shaft compl.

G | see Motor complete

H | see Overpressure cover compl.

I | see Output unit cpl.

## Mechanical Transverse Drum Cutter, part 2 (Rotatable upper part)



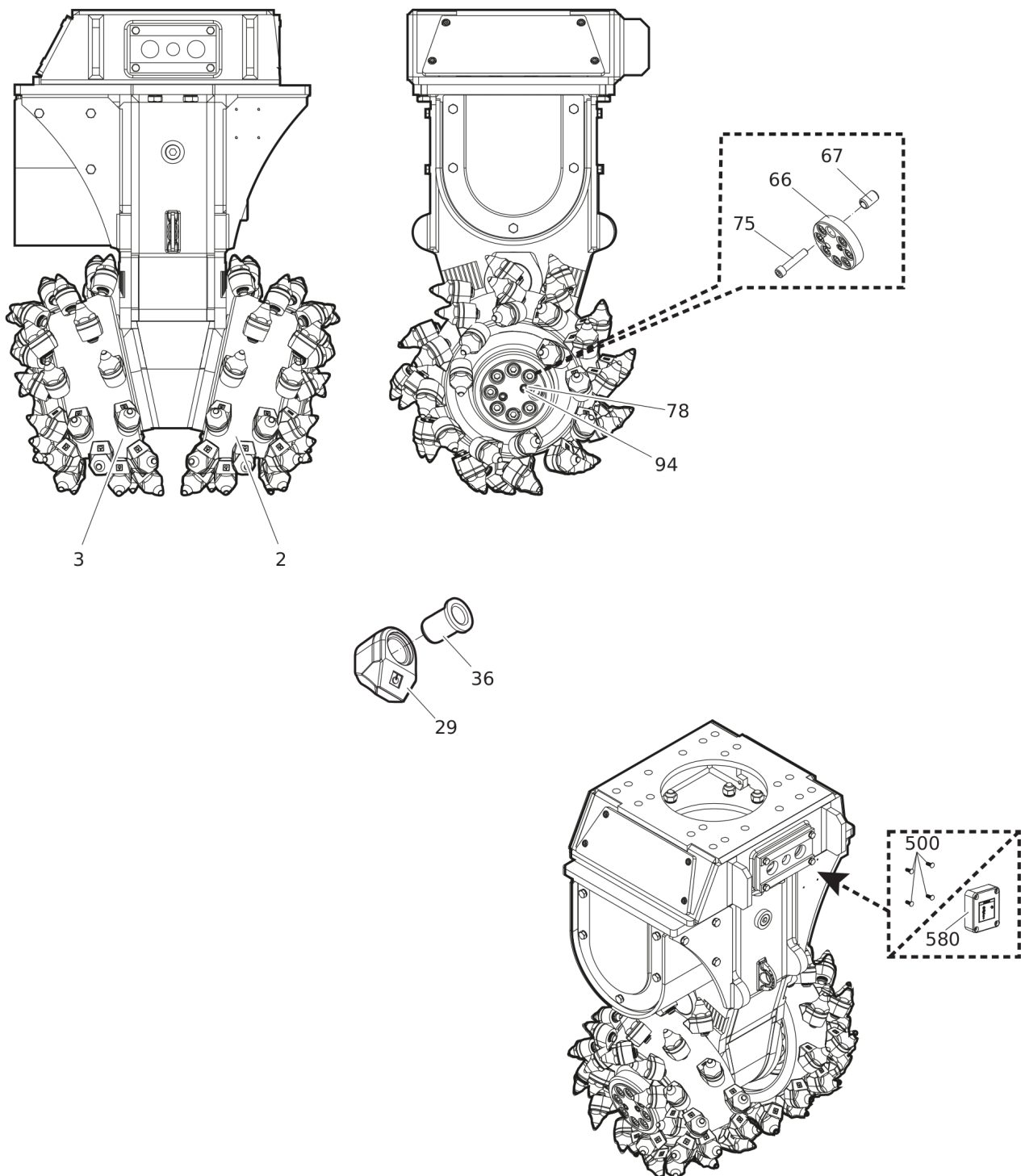
Item	Part No.	Name	Qty	L
2	3311006396	Cutter drum (left)	1	
3	3311006397	Cutter drum (right/motor)	1	
29	3311000792	Pick box	72	
36	3311000801	Wear sleeve	72	
66	3311002938	Cover	2	
67	3311006117	Clamping sleeve	16	
75	3311006121	Allen screw	16	
78	3311000551	Allen screw	8	
94	3311000533	Pair of lock washers	64	
500	3315439145	PROTECTIVE PLUG HATCON	4	A
580		HATCON	1	B

Comments for Page: Transverse Drum Cutter, part 2 (Rotatable upper part)

A | only for drum cutters without HATCON

B | only for drum cutters with HATCON / see separate chapter

## Mechanical Transverse Drum Cutter, part 2 (Intermediate bracket)



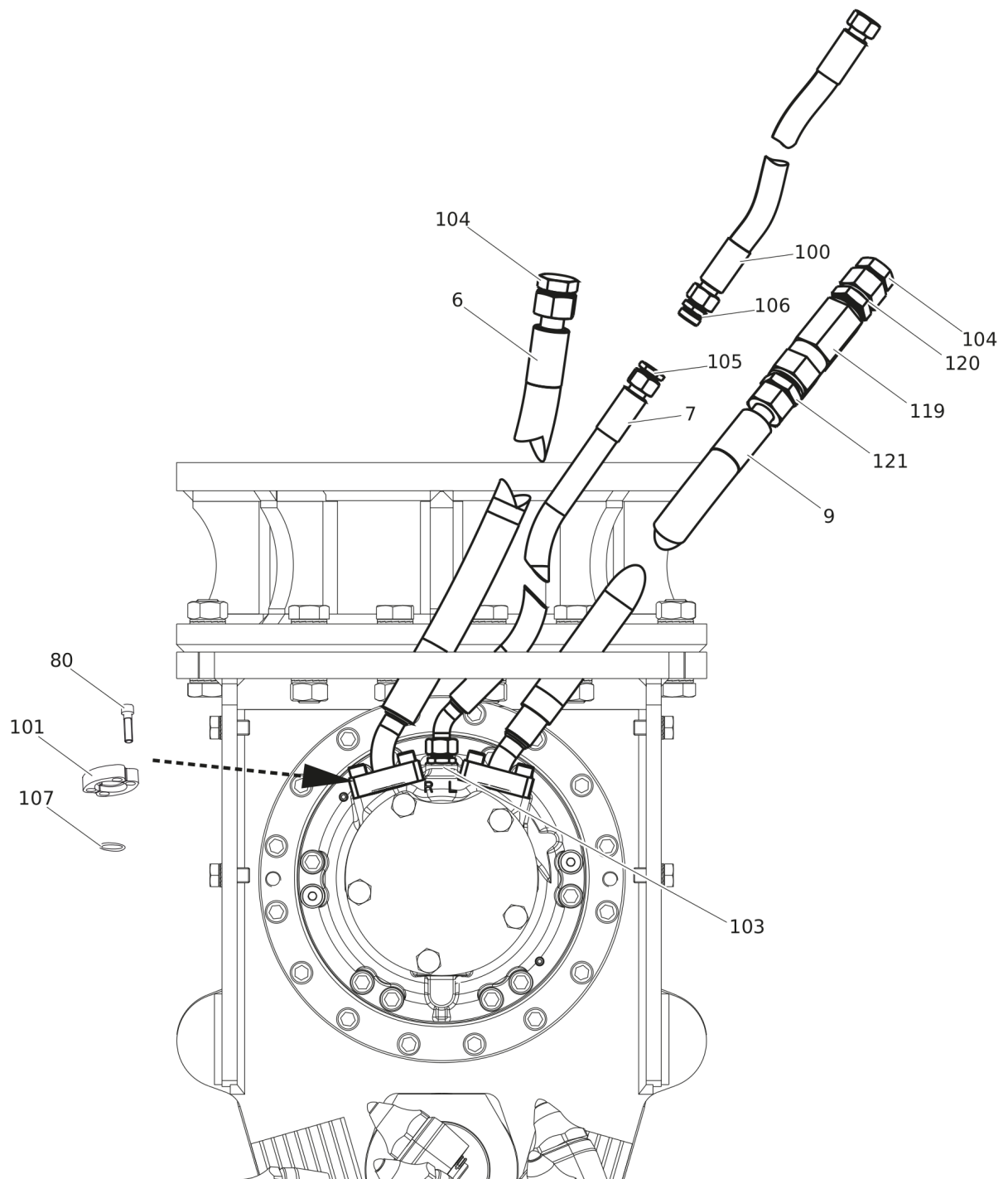
Item	Part No.	Name	Qty	L
2	3311006396	Cutter drum (left)	1	
3	3311006397	Cutter drum (right/motor)	1	
29	3311000792	Pick box	72	
36	3311000801	Wear sleeve	72	
66	3311002938	Cover	2	
67	3311006117	Clamping sleeve	16	
75	3311006121	Allen screw	16	
78	3311000551	Allen screw	8	
94	3311000533	Pair of lock washers	64	
500	3315439145	PROTECTIVE PLUG HATCON	4	A
580		HATCON	1	B

Comments for Page: Transverse Drum Cutter, part 2 (Intermediate bracket)

A | only for drum cutters without HATCON

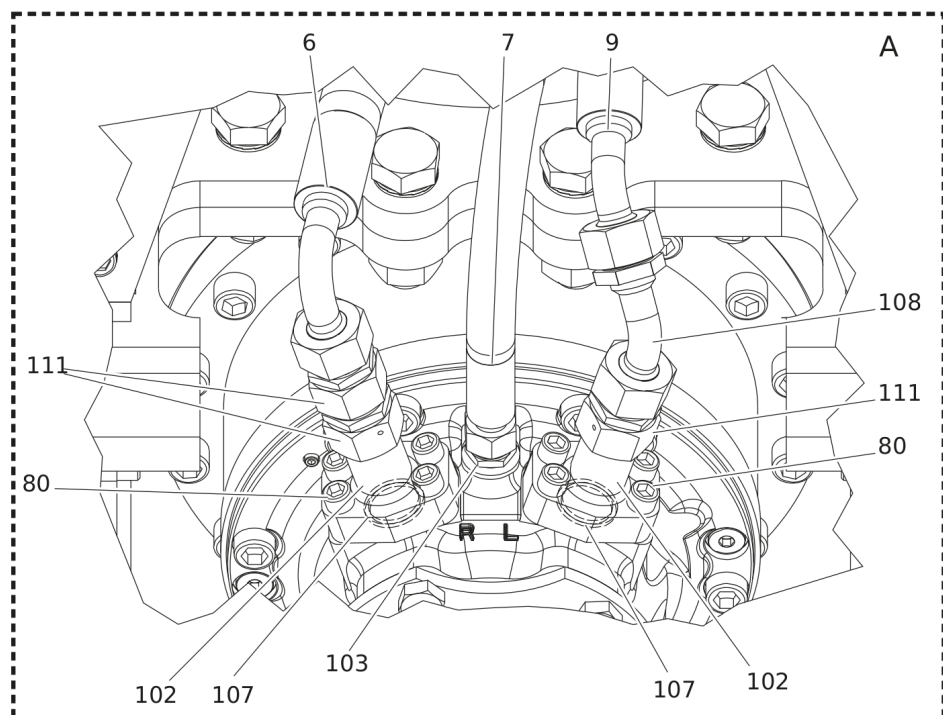
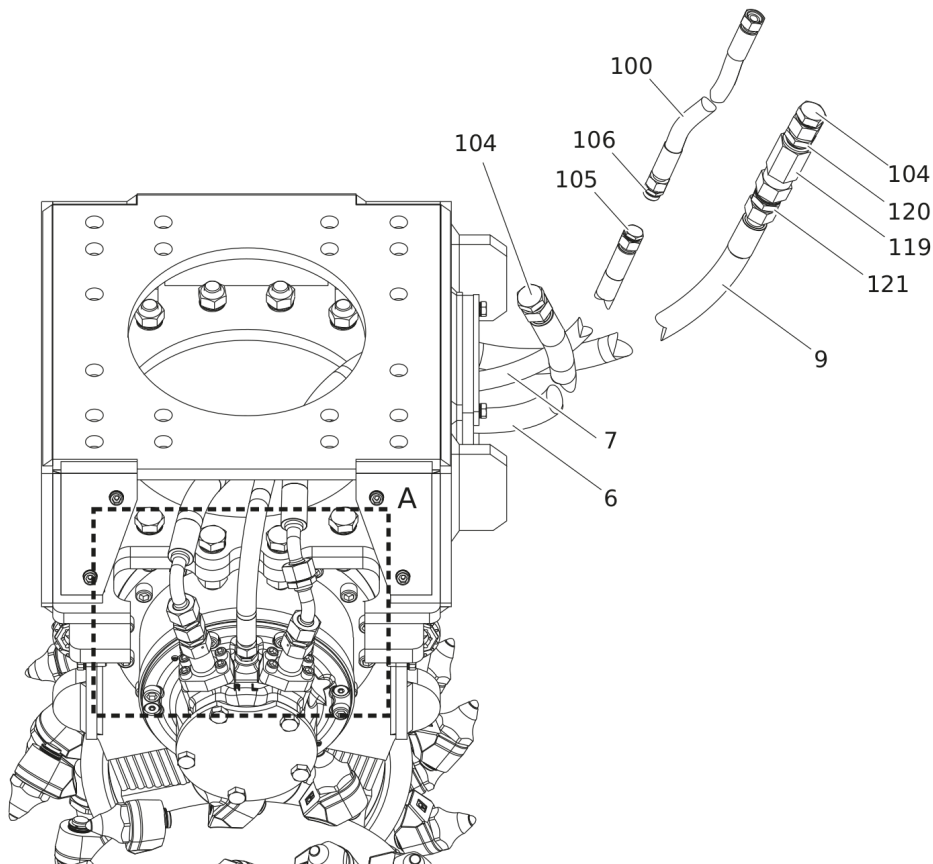
B | only for drum cutters with HATCON / see separate chapter

## Mechanical Transverse Drum Cutter, part 3 (Rotatable upper part)



Item	Part No.	Name	Qty	L
KIT		Hose kit metric, 2.5 m (Standard)	1	
6	3311004928	Hydraulic hose	1	
7	3311000244	Hydraulic hose	1	
9	3311004929	Hydraulic hose	1	
80	3311000536	Allen screw	8	
100	3311001582	Hydraulic hose	1	
101	3311000170	Flange	4	
103	3311000099	Fitting	1	
104	3311000118	Plug	2	
105	3311000119	Plug	1	
106	3311000120	Fitting	1	
107	3311000556	O-ring	2	
119	3311002965	Check valve	1	
120	3311000085	Fitting	1	
121	3311000086	Fitting	1	
KIT	3311005353	Hose kit JIC, 2.5 m (Optional)	1	
6	3311005334	Hydraulic hose	1	
7	3311005335	Hydraulic hose	1	
9	3311005336	Hydraulic hose	1	
80	3311000536	Allen screw	8	
100	3311005337	Hydraulic hose	1	
101	3311000170	Flange	4	
103	3311002210	Fitting	1	
104	3311002745	Plug	2	
105	3311002747	Plug	1	
106	3311002211	Fitting	1	
107	3311000556	O-ring	2	
119	3311002965	Check valve	1	
120	3311002744	Fitting	1	
121	3311003016	Fitting	1	

## Mechanical Transverse Drum Cutter, part 3 (Intermediate bracket)



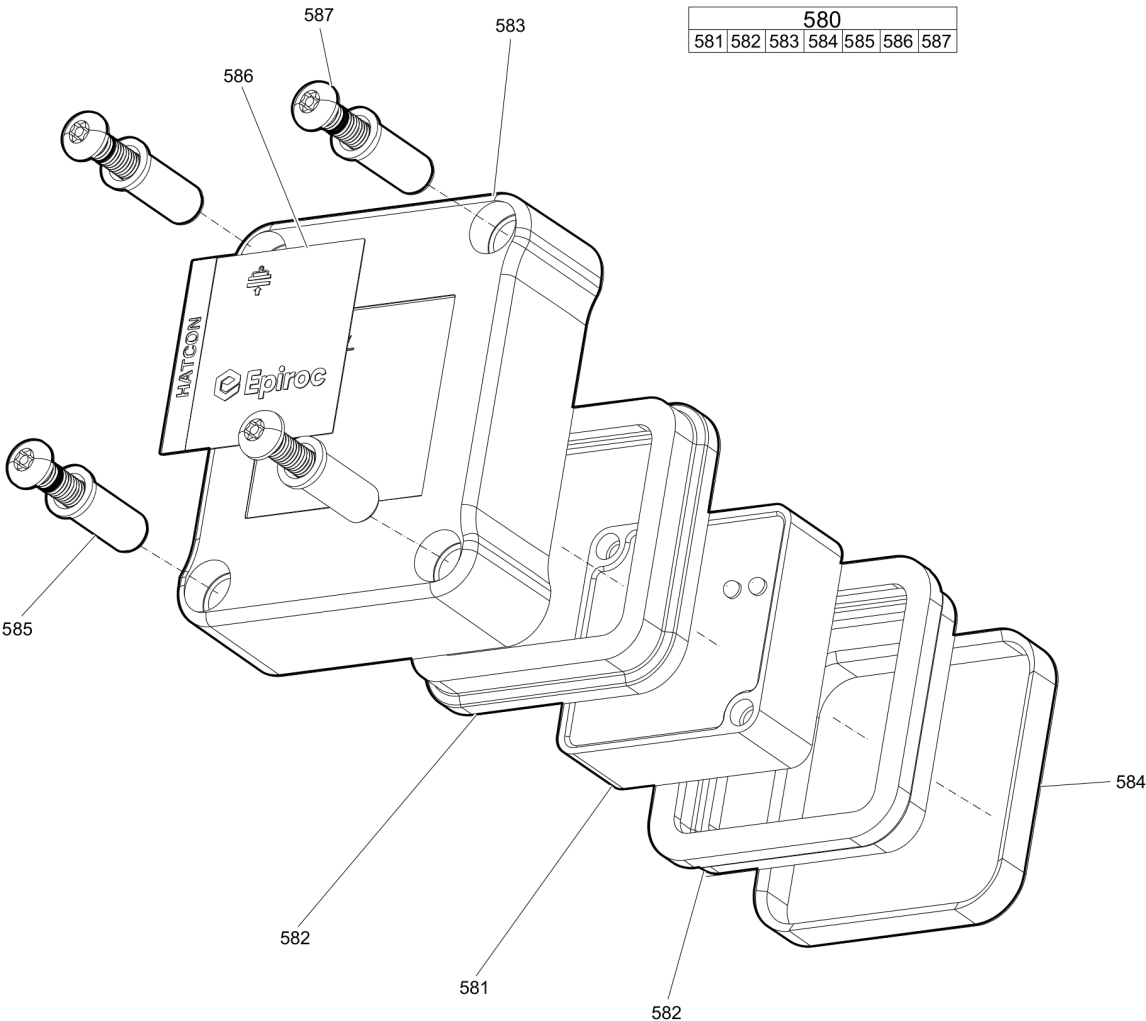
Refer to the DocMine web page for most up-to-date information. The printed information might be outdated.

Thu Feb 29 09:42:55 UTC 2024



Item	Part No.	Name	Qty	L
KIT	3311001200	Hose kit metric, 2.5 m (Standard)	1	
6	3311000165	Hydraulic hose	1	
7	3311000244	Hydraulic hose	1	
9	3311000165	Hydraulic hose	1	
80	3311000536	Allen screw	8	
100	3311001582	Hydraulic hose	1	
101	3311000168	Flange	2	
102	3311000086	Fitting	2	
103	3311000099	Fitting	1	
104	3311000118	Plug	2	
105	3311000119	Plug	1	
106	3311000120	Fitting	1	
107	3311000556	O-ring	2	
119	3311002965	Check valve	1	
120	3311000085	Fitting	1	
121	3311000086	Fitting	1	
KIT	3311004150	Hose kit JIC, 2.5 m (Optional)	1	
6	3311004131	Hydraulic hose	1	
7	3311002208	Hydraulic hose	1	
9	3311004151	Hydraulic hose	1	
80	3311000536	Allen screw	8	
100	3311002209	Hydraulic hose	1	
101	3311000170	Flange	4	
103	3311002210	Fitting	1	
104	3311002745	Plug	2	
105	3311002747	Plug	1	
106	3311002211	Fitting	1	
107	3311000556	O-ring	2	
119	3311002965	Check valve	1	
120	3311002744	Fitting	1	
121	3311003016	Fitting	1	

Mechanical HATCON



Item	Part No.	Name	Qty	L
580(581-587)		HATCON	1	A
581		TRACKING MODULE HATCON	1	
582	3315439130	DAMPER HATCON	2	
583	3315439110	HOUSING TYPE 1 HATCON	1	
584	3315439140	LOCK RING HATCON	1	
585	3315439120	SLEEVE HATCON	4	
586	3315439100	PRODUCT LABEL HATCON	1	
587	3315442600	SCREW HATCON	4	

Comments for Page: HATCON

A | part number see chapter "Optional equipment"

---

Mechanical Tightening torques

NO EXPLODED VIEW  
AVAILABLE  
FOR THIS BOM

Item	Part No.	Name	Qty	L
75	-	Allen screw - 560 Nm (413 ft lbf)	-	A
76	-	Hexagon head screw - 1428 Nm (1053 ft lbf)	-	B
587	-	SCREW HATCON - 22 Nm (16 ft lbf)	-	C

Comments for Page: Tightening torques

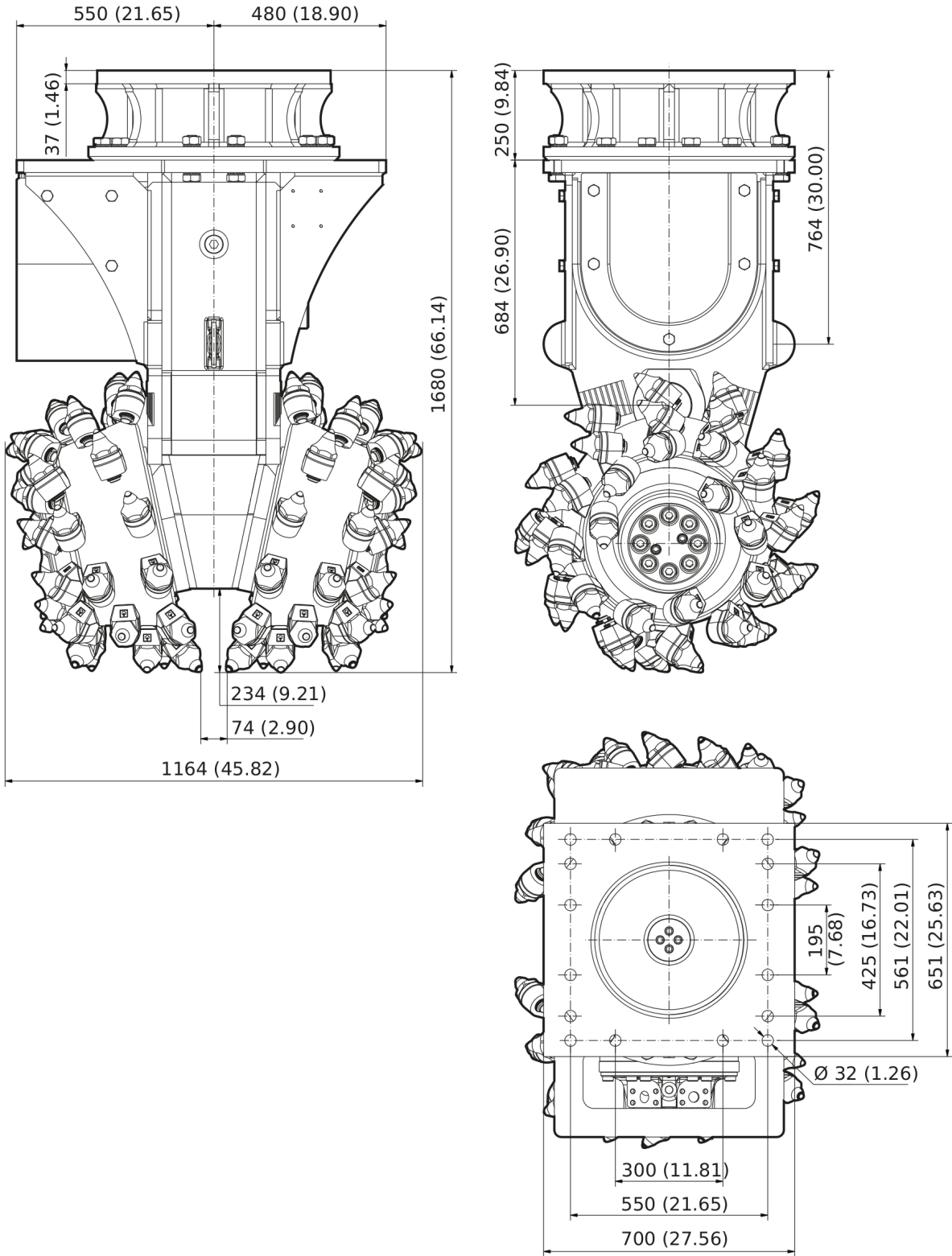
(L)OCAL REMARKS

A | Allen key size 19

B | Open-ended wrench size 46

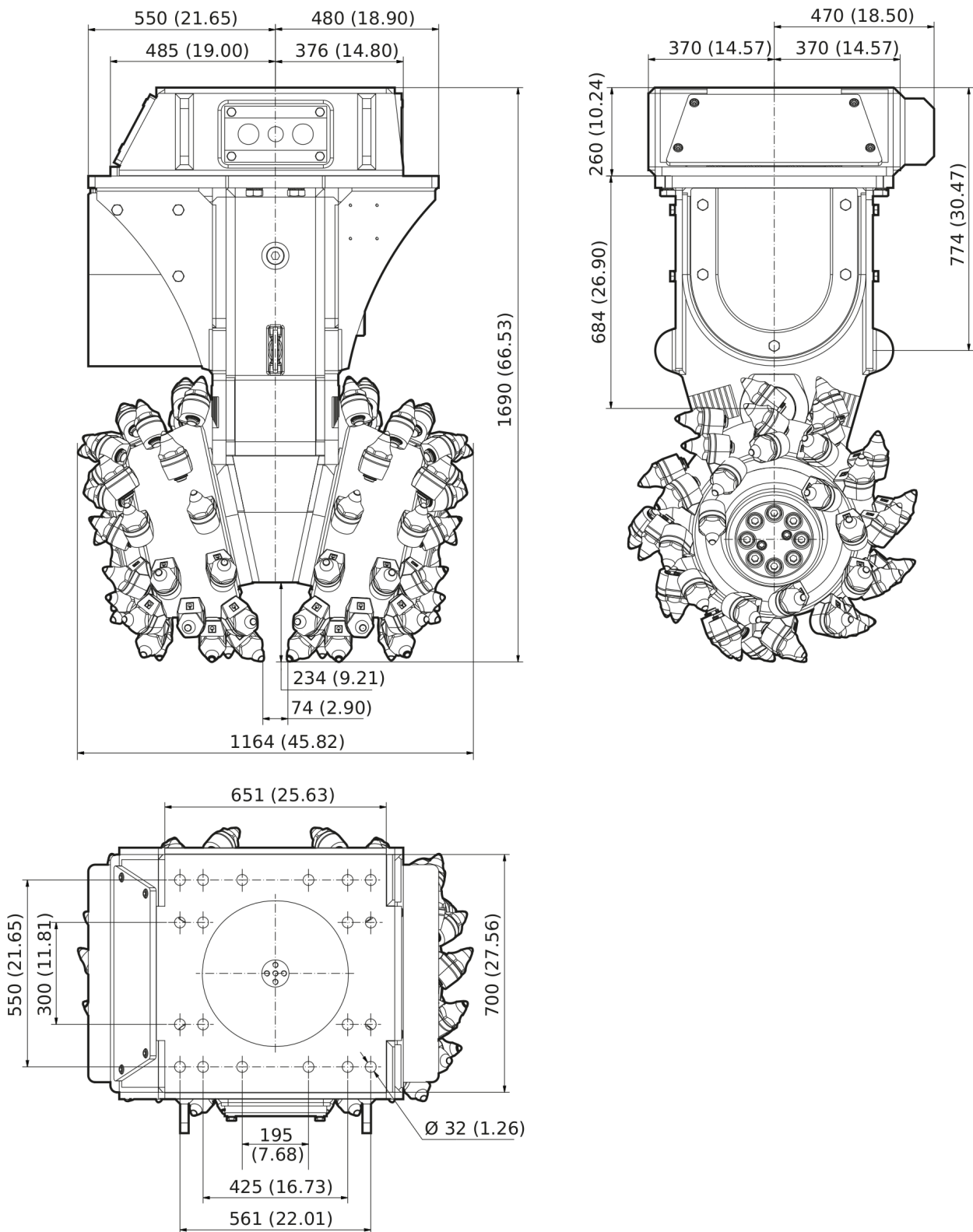
C | Security bit HATCON

Mechanical Dimensions (Rotatable upper part)



This page intentionally left blank

## Mechanical Dimensions (Intermediate bracket)



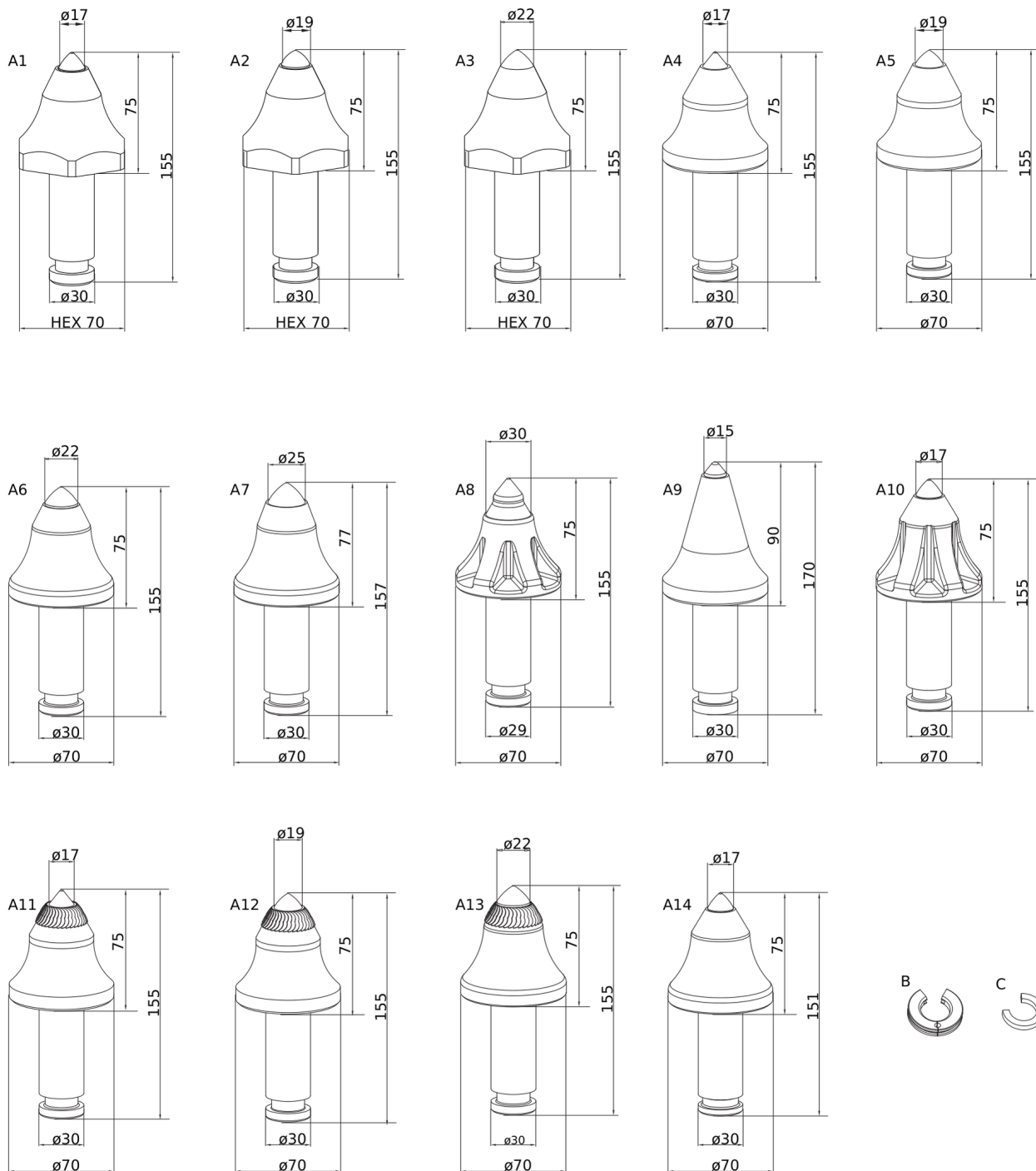
Refer to the DocMine web page for most up-to-date information. The printed information might be outdated.

Thu Feb 29 09:42:57 UTC 2024



This page intentionally left blank

## Options / accessories Picks and retainers kits



Refer to the DocMine web page for most up-to-date information. The printed information might be outdated.

Thu Feb 29 09:42:58 UTC 2024

Item	Part No.	Name	Qty	L
1	3311006195	Picks and retainers kit	1	
A1		HexPick 17/30	10	
B	3311000978	Quick snap	10	
2	3311006298	Picks and retainers kit	1	
A1		HexPick 17/30	10	
C	3311002869	Retainer clip	10	
3	3311006196	Picks and retainers kit	1	
A2		HexPick 19/30	10	
B	3311000978	Quick snap	10	
4	3311006299	Picks and retainers kit	1	
A2		HexPick 19/30	10	
C	3311002869	Retainer clip	10	
5	3311006351	Picks and retainers kit	10	
A3		HexPick 22/30	10	
C	3311002869	Retainer clip	10	
6	3311004575	Picks and retainers kit	1	
A4		ER17/75/70/30 Q	10	
B	3311000978	Quick snap	10	
7	3311004606	Picks and retainers kit	1	
A4		ER17/75/70/30 Q	10	
C	3311002869	Retainer clip	10	
8	3311004576	Picks and retainers kit	1	
A5		ER19/75/70/30 Q	10	
B	3311000978	Quick snap	10	
9	3311004607	Picks and retainers kit	1	
A5		ER19/75/70/30 Q	10	
C	3311002869	Retainer clip	10	
10	3311004577	Picks and retainers kit	1	
A6		ER22/75/70/30 Q	10	
B	3311000978	Quick snap	10	
11	3311004608	Picks and retainers kit	1	
A6		ER22/75/70/30 Q	10	
C	3311002869	Retainer clip	10	
12	3311004578	Picks and retainers kit	1	
A7		ER25/75/70/30 Q	8	
B	3311000978	Quick snap	8	
13	3311004609	Picks and retainers kit	1	

Refer to the DocMine web page for most up-to-date information. The printed information might be outdated.

Thu Feb 29 09:42:58 UTC 2024

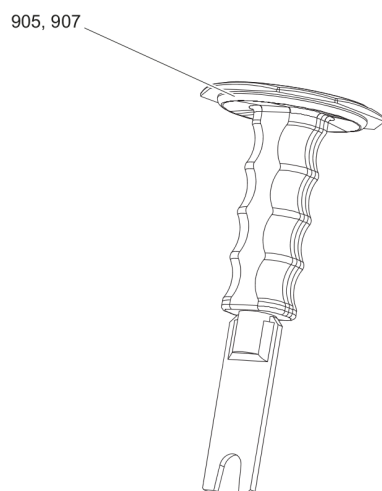
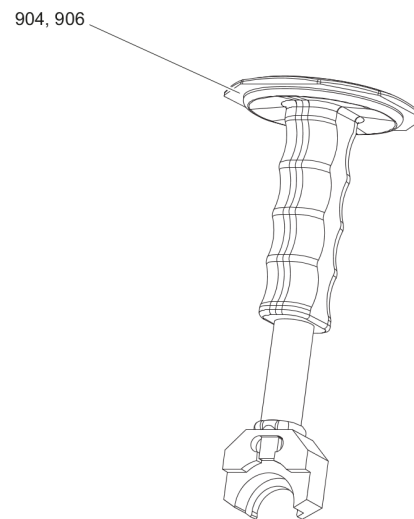
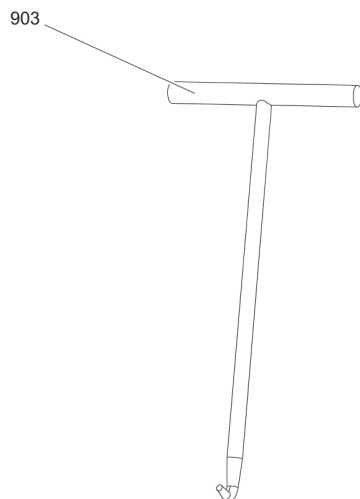
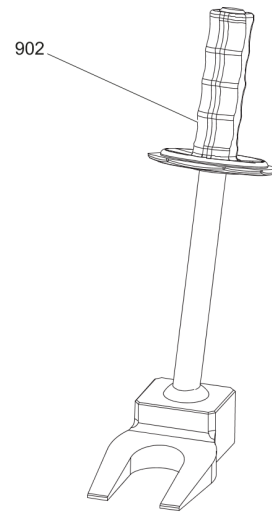
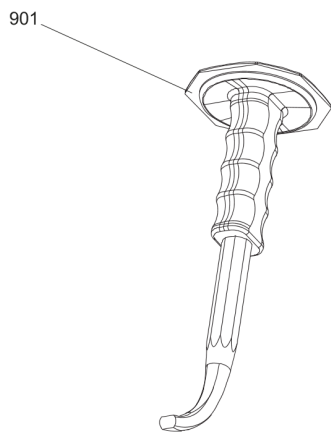
Item	Part No.	Name	Qty	L
A7		ER25/75/70/30 Q	8	
C	3311002869	Retainer clip	8	
14	3311004579	Picks and retainers kit	1	
A8		ER30/77/70/30 Q	10	
B	3311000978	Quick snap	10	
15	3311004613	Picks and retainers kit	1	
A8		ER30/77/70/30 Q	10	
C	3311002869	Retainer clip	10	
16	3311004580	Picks and retainers kit	1	
A9		ER15/90/70/30 Q	10	
B	3311000978	Quick snap	10	
17	3311004614	Picks and retainers kit	1	
A9		ER15/90/70/30 Q	10	
C	3311002869	Retainer clip	10	
18	3311004581	Picks and retainers kit	1	
A10		ER17/75/70/30 QE	10	
B	3311000978	Quick snap	10	
19	3311004615	Picks and retainers kit	1	
A10		ER17/75/70/30 QE	10	
C	3311002869	Retainer clip	10	
20	3311004582	Picks and retainers kit	1	
A11		ER17/75/70/30 PQ	10	
B	3311000978	Quick snap	10	
21	3311004616	Picks and retainers kit	1	
A11		ER17/75/70/30 PQ	10	
C	3311002869	Retainer clip	10	
22	3311004583	Picks and retainers kit	1	
A12		ER19/75/70/30 PQ	10	
B	3311000978	Quick snap	10	
23	3311004617	Picks and retainers kit	1	
A12		ER19/75/70/30 PQ	10	
C	3311002869	Retainer clip	10	
24	3311004584	Picks and retainers kit	1	
A13		ER22/75/70/30 PQ	10	
B	3311000978	Quick snap	10	
20	3311004618	Picks and retainers kit	1	
A13		ER22/75/70/30 PQ	10	

Refer to the DocMine web page for most up-to-date information. The printed information might be outdated.

Thu Feb 29 09:42:58 UTC 2024

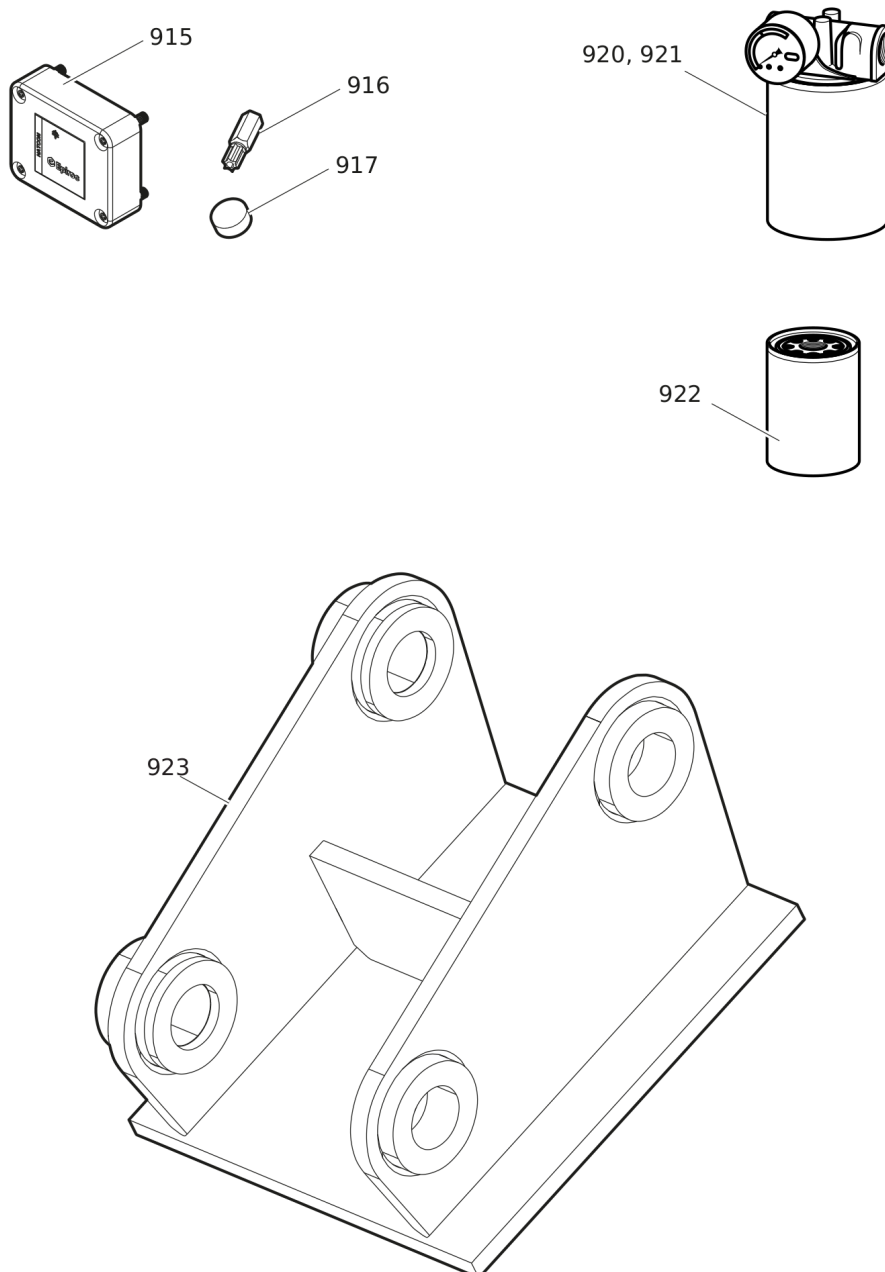
Item	Part No.	Name	Qty	L
C	3311002869	Retainer clip	10	
21	3311004585	Picks and retainers kit	1	
A14		ER17/75/70/30 C	10	
C	3311002869	Retainer clip	10	

## Options / accessories Tools for picks



Item	Part No.	Name	Qty	L
901	3311000989	Knock out tool	1	
902	3311002872	Knock out tool for stuck picks	1	
903	3311000980	Puller tool for quick snap retainers	1	
904	3311004217	Mounting toolfor retaining clips	1	
905	3311004218	Dismantling toolfor retaining clips	1	
906	3311002876	Mounting toolfor retaining clips (ER17/75/70/30 C)	1	
907	3311002195	Dismantling toolfor retaining clips (ER17/75/70/30 C)	1	

## Options / accessories Optional equipment





Item	Part No.	Name	Qty	L
915	3315442500	HATCON KIT 1 (3G)	1	A
915	3315442520	HATCON KIT 1 (LTE)	1	
916	3315439105	SECURITY BIT HATCON	1	
917	3315439106	MAGNET HATCON	1	
920	3311003111	Hydraulic filter set for leakage oil, metric	1	
921	3311003195	Hydraulic filter set for leakage oil, JIC	1	
922	3311003087	Filter cartridge for leakage oil, metric and JIC	1	
923		ADAPTER PLATE matching the carrier. Consult the authorized Customer Center/Dealer in your area.	1	
-	3311005189	WATER SPRAY KIT	1	

Comments for Page: Optional equipment

A | with item 916 and 917





Any unauthorized use or copying of the contents or any part thereof is prohibited.  
This applies in particular to trademarks, model denominations, part numbers, and drawings.