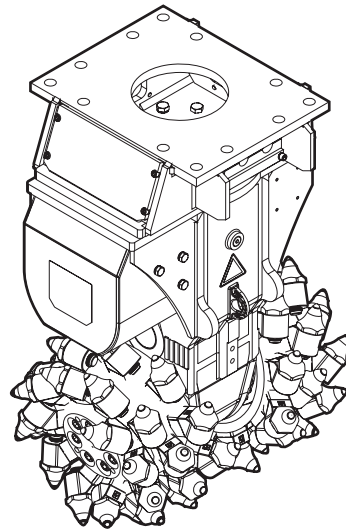


VC 1400

Spare parts list Transverse Drum Cutters

VC 1400 s/n DGR666121 -



General information

This spare parts list applies to the following:

Description

VC 1400 - 1
VC 1400 - 2
VC 1400 - 3

Use only authorized parts. Any damage or malfunction caused by the use of unauthorized parts is not covered by Warranty or Product Liability. Any unauthorized use or copying of the contents or any part thereof is prohibited. This applies in particular to trademarks, model denominations, part numbers, and drawings.

Instructions for use

This spare parts list contains no safety regulations and is merely intended to assist in the ordering of spare parts.

For information about operating, servicing, or repairing, the relevant Safety and operating instructions must be consulted at all costs.

Please observe the safety instructions listed in the relevant Safety and operating instructions!

Service, repair and wear part kits

Label kit	1
Kit list	3

Mechanical

Transverse Drum Cutter, part 1 (Rotatable upper part)	7
Transverse Drum Cutter, part 1 (Intermediate bracket)	11
Transverse Drum Cutter, part 2 (Rotatable upper part)	15
Transverse Drum Cutter, part 2 (Intermediate bracket)	17
Transverse Drum Cutter, part 3 (Rotatable upper part)	19
Transverse Drum Cutter, part 3 (Intermediate bracket)	22
HATCON	26
Tightening torques	29
Dimensions (Rotatable upper part)	31
Dimensions (Intermediate bracket)	32

Options / accessories

Picks and retainers kits	34
Tools for picks	39
Optional equipment	41

Service, repair and wear part kits Label kit

NO EXPLODED VIEW
AVAILABLE
FOR THIS BOM

Item	Part No.	Name	Qty	L
KIT	3311006212	Label kit	1	

Service, repair and wear part kits Kit list

NO EXPLODED VIEW
AVAILABLE
FOR THIS BOM

Item	Part No.	Name	Qty	L
KIT	3311006226	Adjustment cover kit	1	
48		Cover	1	
57	3311000727	Allen screw	16	
59	3311004460	O-ring	1	
KIT	3311006227	Seal kit drive shaft	1	
22	3311000670	Allen screw	15	
60	3311000715	O-ring	1	
63	3311000650	Seal	1	
90	3311000558	O-ring	1	
91	3311002372	O-ring	2	
KIT	3311006228	Drive shaft compl.	1	
22	3311000670	Allen screw	15	
45		Drive shaft	1	
49	3311006032	Flange (motor)	1	
50	3311006033	Distance sleeve	2	
57	3311000727	Allen screw	16	
59	3311004460	O-ring	1	
60	3311000715	O-ring	1	
63	3311000650	Seal	1	
KIT	3311001557	Motor complete	1	A
79		Cover (motor)	1	
81		Distribution housing (motor)	1	
82	3311001336	Cam ring	1	A
85		Cylinder block	1	
87	3311000524	Hexagon head screw	5	
88	3311000580	Allen screw	12	
90	3311000558	O-ring	1	
91	3311002372	O-ring	2	
KIT	3311001534	Motor complete	1	B
79		Cover (motor)	1	
81		Distribution housing (motor)	1	
82	3311002389	Cam ring	1	B
85		Cylinder block	1	
87	3311000524	Hexagon head screw	5	
88	3311000580	Allen screw	12	
90	3311000558	O-ring	1	
91	3311002372	O-ring	2	

Refer to the DocMine web page for most up-to-date information. The printed information might be outdated.

Thu Feb 29 10:47:53 UTC 2024

Item	Part No.	Name	Qty	L
KIT	3311001428	Motor complete	1	C
79		Cover (motor)	1	
81		Distribution housing (motor)	1	
82	3311002390	Cam ring	1	C
85		Cylinder block	1	
87	3311000524	Hexagon head screw	5	
88	3311000580	Allen screw	12	
90	3311000558	O-ring	1	
91	3311002372	O-ring	2	
KIT	3311006229	Overpressure cover compl.	1	
79		Cover (motor)	1	
87	3311000524	Hexagon head screw	5	
90	3311000558	O-ring	1	
KIT	3311006230	Wear sleeve kit	1	
36	3311000801	Wear sleeve	54	
KIT	3311006231	Output unit cpl.	1	
10		Output shaft	1	
11	3311005891	Bushing	7	
12	3311006026	Bevel gear	1	
13		Housing (output shaft)	1	
14	3311004279	Sealing cover	1	
17	3311000756	Tapered roller bearing	1	
18	3311004273	Tapered roller bearing	1	
20	3311004280	Seal	1	
21	3311006207	Allen screw	7	
23	3311000714	Allen screw	32	
24	3311000731	Allen screw	10	
25	3311000640	Allen screw	4	
26	3311000641	Usit-ring	14	
KIT	3311006232	Drum fastening kit	1	
66	3311000885	Washer (drum cutter)	14	
67	3311000884	Clamping sleeve	14	
75	3311000682	Allen screw	14	
78	3311004513	Set screw	8	
KIT	3311006233	Seal kit output shaft	1	
14	3311004279	Sealing cover	2	
20	3311004280	Seal	2	

Refer to the DocMine web page for most up-to-date information. The printed information might be outdated.

Thu Feb 29 10:47:53 UTC 2024

Item	Part No.	Name	Qty	L
24	3311000731	Allen screw	20	
25	3311000640	Allen screw	8	
26	3311000641	Usit-ring	28	
28	3311004287	O-ring	2	

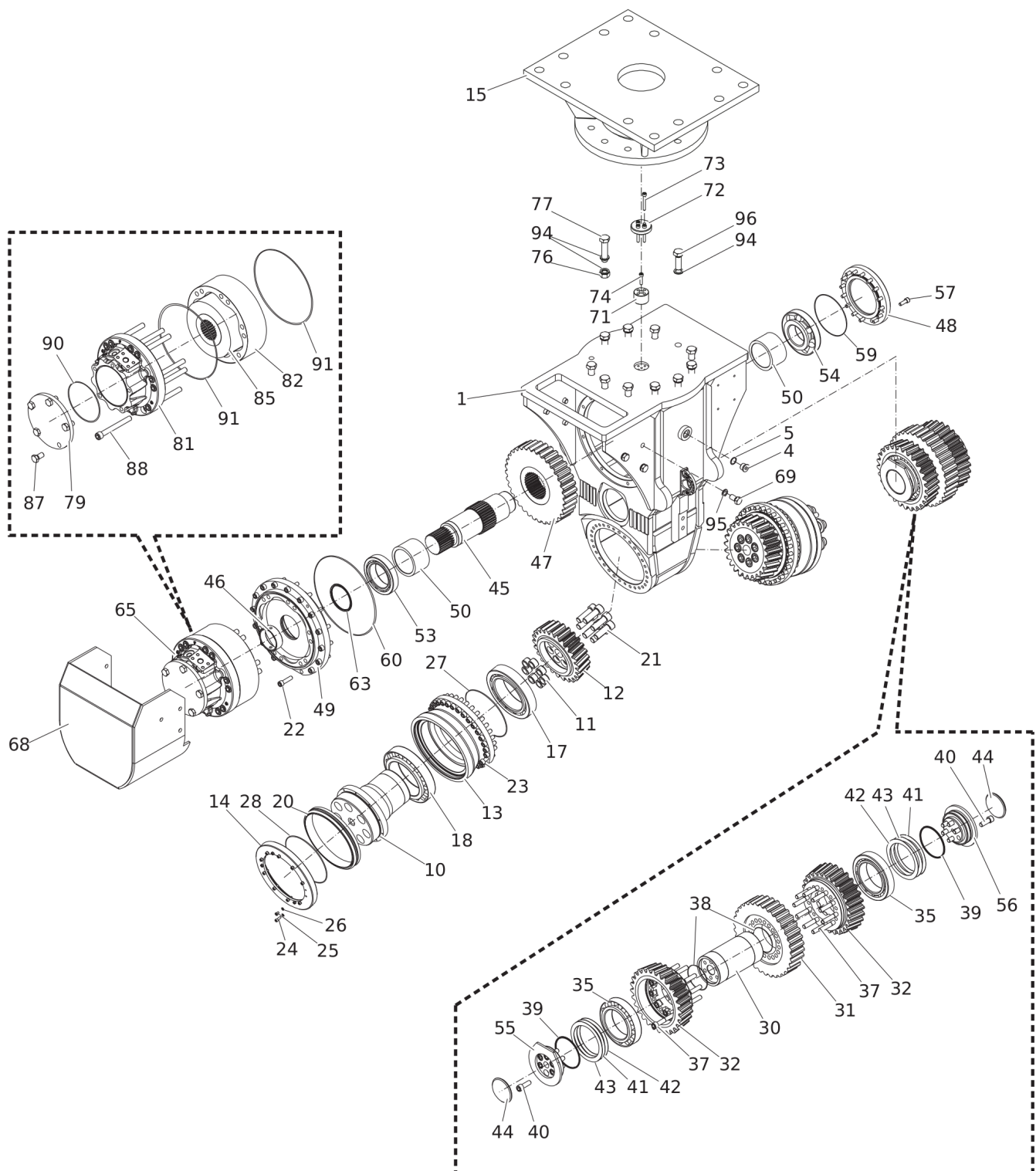
Comments for Page: Kit list

A | VC 1400 - 1

B | VC 1400 - 2

C | VC 1400 - 3

Mechanical Transverse Drum Cutter, part 1 (Rotatable upper part)



Refer to the DocMine web page for most up-to-date information. The printed information might be outdated.

Thu Feb 29 10:47:55 UTC 2024

Item	Part No.	Name	Qty	L
1	3311006063	Gear housing	1	
4	3311000631	Plug	2	
5	3311001071	Seal	2	
10		Output shaft	2	I
11	3311005891	Bushing	14	
12	3311006026	Bevel gear	2	
13		Housing (output shaft)	2	I
14	3311004279	Sealing cover	2	
15	3311000953	Rotatable upper part	1	
17	3311000756	Tapered roller bearing	2	
18	3311004273	Tapered roller bearing	2	
20	3311004280	Seal	2	
21	3311006207	Allen screw	14	
22	3311000670	Allen screw	15	
23	3311000714	Allen screw	64	
24	3311000731	Allen screw	20	
25	3311000640	Allen screw	8	
26	3311000641	Usit-ring	28	
27	3311000594	O-ring	2	
28	3311004287	O-ring	2	
30	3311006024	Idle cogwheel pin	1	
31	3311006025	Idle cogwheel	1	
32	3311006022	Bevel gear	2	
35	3311006067	Tapered roller bearing	2	
37	3311006036	Bolt	20	
38	3311000760	O-ring	2	
39	3311006216	Seal	2	
40	3311006217	Allen screw	12	
41	3311006234	Spacer	5	
42	3311006235	Spacer	5	
43	3311006236	Spacer	5	
44	3311006029	Cover	2	
45		Drive shaft	1	F
46	3311001653	Ring	1	
47	3311006031	Spur gear	1	
48		Cover	1	E
49	3311006032	Flange (motor)	1	

Refer to the DocMine web page for most up-to-date information. The printed information might be outdated.

Thu Feb 29 10:47:55 UTC 2024

Item	Part No.	Name	Qty	L
50	3311006033	Distance sleeve	2	
53	3311000646	Tapered roller bearing	1	
54	3311001429	Tapered roller bearing	1	
55	3311006027	Cover (left)	1	
56	3311006028	Cover (right)	1	
57	3311000727	Allen screw	16	
59	3311004460	O-ring	1	
60	3311000715	O-ring	1	
63	3311000650	Seal	1	
65	3311001557	Motor complete	1	A, D
65	3311001534	Motor complete	1	B, D
65	3311001428	Motor complete	1	C
68	3311006064	Cover (motor)	1	
69	3311000524	Hexagon head screw	6	
71	3311000385	Centering pin	1	
72	3311000386	Plate (centering pin)	1	
73	3311000741	Allen screw	4	
74	3311000704	Allen screw	1	
76	3311000663	Hexagon head nut	6	
77	3311001596	Hexagon head screw	6	
79		Cover (motor)	1	G, H
81		Distribution housing (motor)	1	G
82	3311001336	Cam ring	1	A
82	3311002389	Cam ring	1	B
82	3311002390	Cam ring	1	C
85		Cylinder block	1	G
87	3311000524	Hexagon head screw	5	
88	3311000580	Allen screw	12	
90	3311000558	O-ring	1	
91	3311002372	O-ring	2	
94	3311000532	Pair of lock washers	16	
95	3311000533	Pair of lock washers	1	
96	3311004745	Hexagon head screw	4	

Comments for Page: Transverse Drum Cutter, part 1 (Rotatable upper part)

A | VC 1400 - 1

B | VC 1400 - 2

Refer to the DocMine web page for most up-to-date information. The printed information might be outdated.

Thu Feb 29 10:47:56 UTC 2024

C | VC 1400 - 3

D | with item 79-91

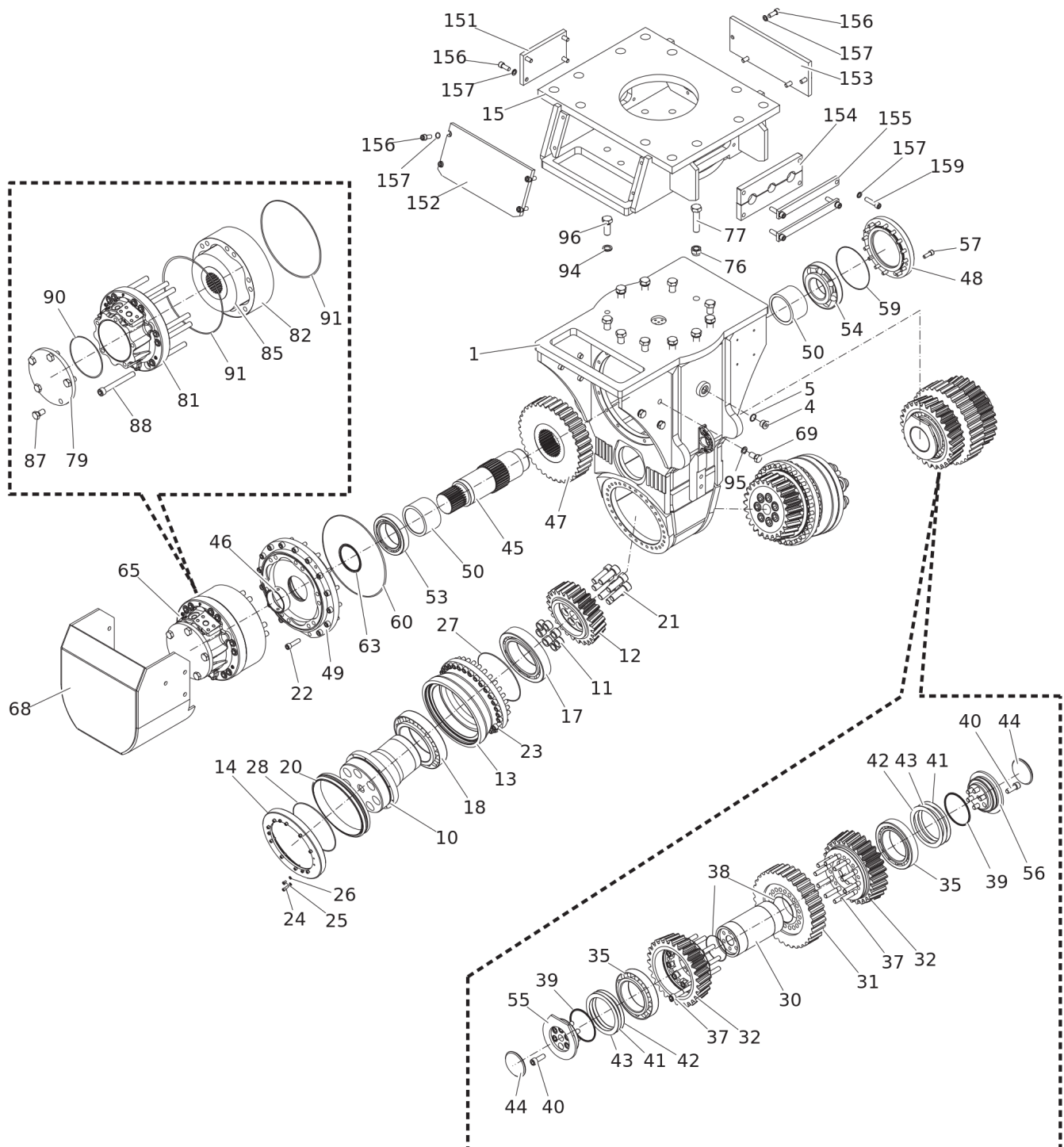
E | see Adjustment cover kit

F | see Drive shaft compl.

G | see Motor complete

H | see Overpressure cover compl.

I | see Output unit cpl.



Item	Part No.	Name	Qty	L
1	3311006063	Gear housing	1	
4	3311000631	Plug	2	
5	3311001071	Seal	2	
10		Output shaft	2	I
11	3311005891	Bushing	14	
12	3311006026	Bevel gear	2	
13		Housing (output shaft)	2	I
14	3311004279	Sealing cover	2	
15	3311005672	Intermediate bracket	1	
17	3311000756	Tapered roller bearing	2	
18	3311004273	Tapered roller bearing	2	
20	3311004280	Seal	2	
21	3311006207	Allen screw	14	
22	3311000670	Allen screw	15	
23	3311000714	Allen screw	64	
24	3311000731	Allen screw	20	
25	3311000640	Allen screw	8	
26	3311000641	Usit-ring	28	
27	3311000594	O-ring	2	
28	3311004287	O-ring	2	
30	3311006024	Idle cogwheel pin	1	
31	3311006025	Idle cogwheel	1	
32	3311006022	Bevel gear	2	
35	3311006067	Tapered roller bearing	2	
37	3311006036	Bolt	20	
38	3311000760	O-ring	2	
39	3311006216	Seal	2	
40	3311006217	Allen screw	12	
41	3311006234	Spacer	5	
42	3311006235	Spacer	5	
43	3311006236	Spacer	5	
44	3311006029	Cover	2	
45		Drive shaft	1	F
46	3311001653	Ring	1	
47	3311006031	Spur gear	1	
48		Cover	1	E
49	3311006032	Flange (motor)	1	

Refer to the DocMine web page for most up-to-date information. The printed information might be outdated.

Thu Feb 29 10:47:56 UTC 2024

Item	Part No.	Name	Qty	L
50	3311006033	Distance sleeve	2	
53	3311000646	Tapered roller bearing	1	
54	3311001429	Tapered roller bearing	1	
55	3311006027	Cover (left)	1	
56	3311006028	Cover (right)	1	
57	3311000727	Allen screw	16	
59	3311004460	O-ring	1	
60	3311000715	O-ring	1	
63	3311000650	Seal	1	
65	3311001557	Motor complete	1	A, D
65	3311001534	Motor complete	1	B, D
65	3311001428	Motor complete	1	C
68	3311006064	Cover (motor)	1	
69	3311000524	Hexagon head screw	6	
76	3311000663	Hexagon head nut	6	
77	3311001596	Hexagon head screw	6	
79		Cover (motor)	1	G, H
81		Distribution housing (motor)	1	G
82	3311001336	Cam ring	1	A
82	3311002389	Cam ring	1	B
82	3311002390	Cam ring	1	C
85		Cylinder block	1	G
87	3311000524	Hexagon head screw	5	
88	3311000580	Allen screw	12	
90	3311000558	O-ring	1	
91	3311002372	O-ring	2	
94	3311000532	Pair of lock washers	16	
95	3311000533	Pair of lock washers	1	
96	3311004745	Hexagon head screw	4	
151	3311005858	Cover	1	
152	3311005859	Cover	1	
153	3311005860	Cover	1	
154	3311005861	Rubber plate	1	
155	3311005862	Flat steel	2	
156	3311000529	Allen screw	12	
157	3311000540	Pair of lock washers	12	
159	3311005904	Allen screw	4	

Refer to the DocMine web page for most up-to-date information. The printed information might be outdated.

Thu Feb 29 10:47:56 UTC 2024

Comments for Page: Transverse Drum Cutter, part 1 (Intermediate bracket)

A | VC 1400 - 1

B | VC 1400 - 2

C | VC 1400 - 3

D | with item 79-91

E | see Adjustment cover kit

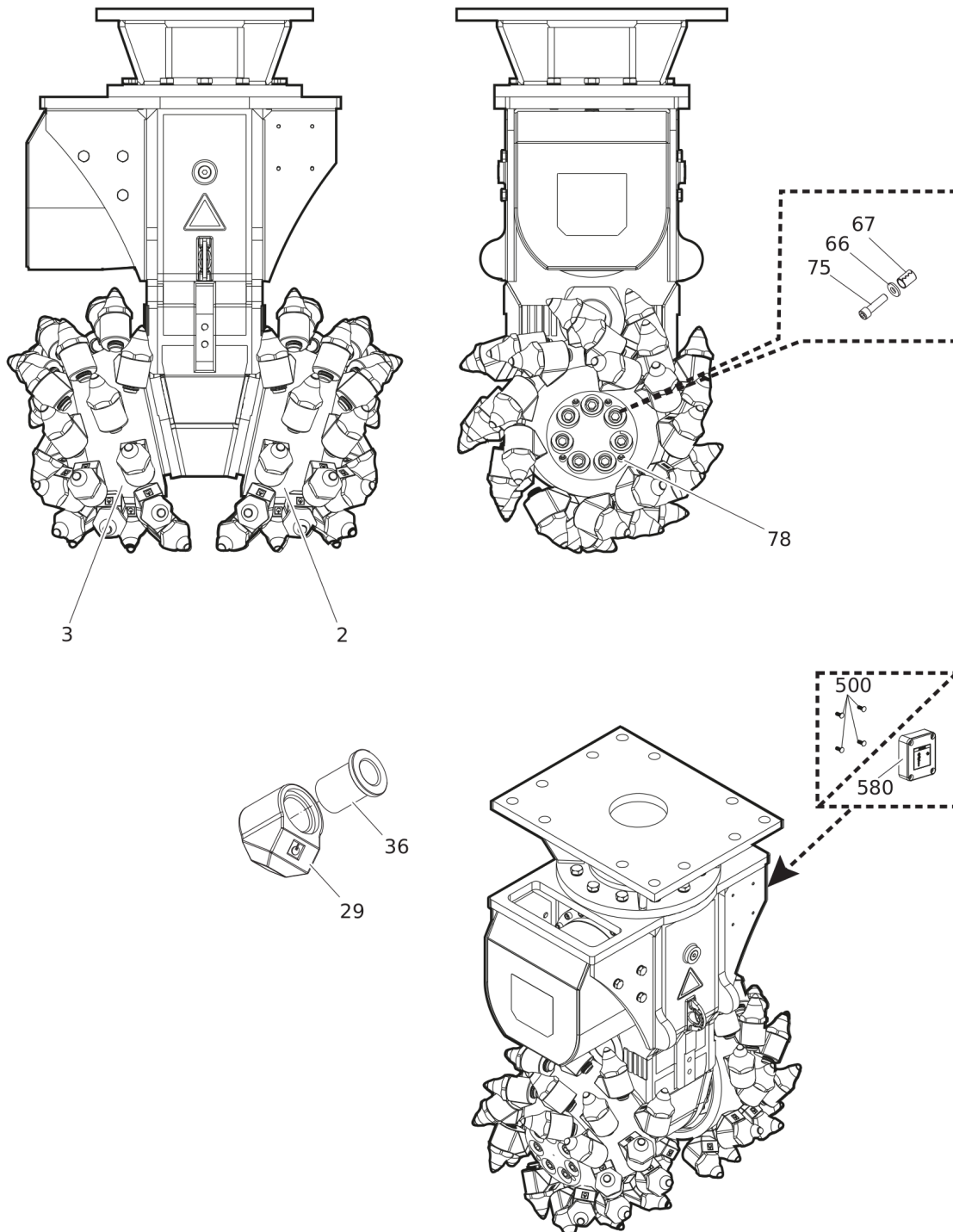
F | see Drive shaft compl.

G | see Motor complete

H | see Overpressure cover compl.

I | see Output unit cpl.

Mechanical Transverse Drum Cutter, part 2 (Rotatable upper part)



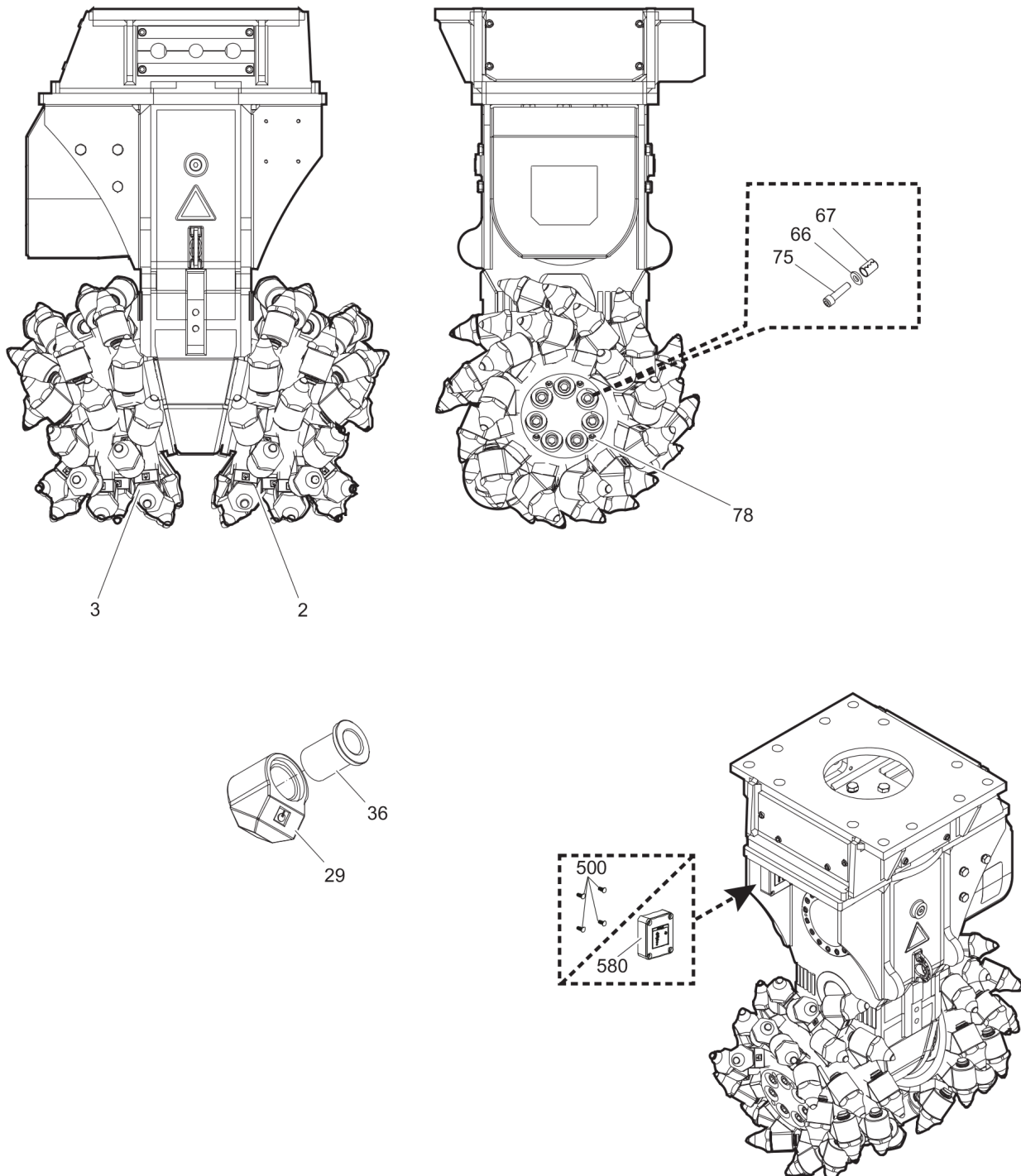
Item	Part No.	Name	Qty	L
2	3311006081	Cutter drum (left)	1	
3	3311006082	Cutter drum (right/motor)	1	
29	3311004253	Pick box	54	
36	3311000801	Wear sleeve	54	
66	3311000885	Washer (drum cutter)	14	
67	3311000884	Clamping sleeve	14	
75	3311000682	Allen screw	14	
78	3311004513	Set screw	8	
500	3315439145	PROTECTIVE PLUG HATCON	4	A
580		HATCON	1	B

Comments for Page: Transverse Drum Cutter, part 2 (Rotatable upper part)

A | only for drum cutters without HATCON

B | only for drum cutters with HATCON / see separate chapter

Mechanical Transverse Drum Cutter, part 2 (Intermediate bracket)



Refer to the DocMine web page for most up-to-date information. The printed information might be outdated.

Thu Feb 29 10:47:58 UTC 2024

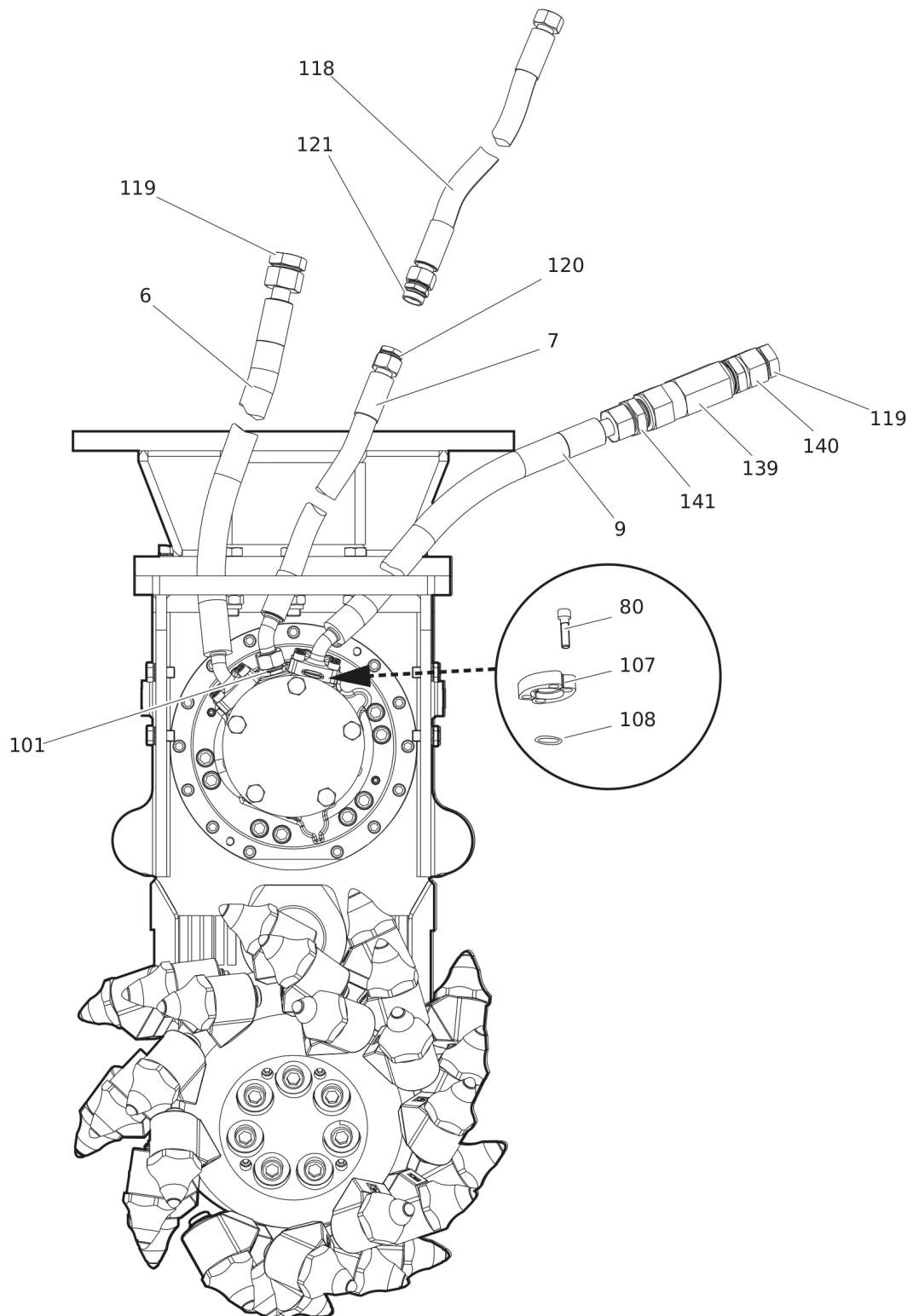
Item	Part No.	Name	Qty	L
2	3311006081	Cutter drum (left)	1	
3	3311006082	Cutter drum (right/motor)	1	
29	3311004253	Pick box	54	
36	3311000801	Wear sleeve	54	
66	3311000885	Washer (drum cutter)	14	
67	3311000884	Clamping sleeve	14	
75	3311000682	Allen screw	14	
78	3311004513	Set screw	8	
500	3315439145	PROTECTIVE PLUG HATCON	4	A
580		HATCON	1	B

Comments for Page: Transverse Drum Cutter, part 2 (Intermediate bracket)

A | only for drum cutters without HATCON

B | only for drum cutters with HATCON / see separate chapter

Mechanical Transverse Drum Cutter, part 3 (Rotatable upper part)



Item	Part No.	Name	Qty	L
KIT	3311006344	Hose kit metric, 2.5 m (Standard)	1	
6	3311001540	Hydraulic hose	1	
7	3311000244	Hydraulic hose	1	
9	3311001540	Hydraulic hose	1	
80	3311001805	Allen screw	8	
101	3311001538	Fitting	1	
107	3311001537	Flange	2	
108	3311001361	O-ring	2	
118	3311001582	Hydraulic hose	1	
119	3311000118	Plug	2	
120	3311000119	Plug	1	
121	3311000120	Fitting	1	
139	3311002965	Check valve	1	
140	3311000085	Fitting	1	
141	3311000086	Fitting	1	
KIT	3311006339	Hose kit JIC, 2.5 m (Optional)	1	
6	3311005618	Hydraulic hose	1	
7	3311002208	Hydraulic hose	1	
9	3311005618	Hydraulic hose	1	
80	3311001805	Allen screw	8	
101	3311003082	Fitting	1	
107	3311001537	Flange	2	
108	3311001361	O-ring	2	
118	3311002209	Hydraulic hose	1	
119	3311002745	Plug	2	
120	3311002747	Plug	1	
121	3311002211	Fitting	1	
139	3311002965	Check valve	1	
140	3311002744	Fitting	1	
141	3311003016	Fitting	1	
KIT	3311006332	Hose kit BSP, 2.5 m (Optional)	1	
6	3311004859	Hydraulic hose	1	
7	3311004656	Hydraulic hose	1	
9	3311004859	Hydraulic hose	1	
80	3311001805	Allen screw	8	
101	3311001538	Fitting	1	
107	3311001537	Flange	2	

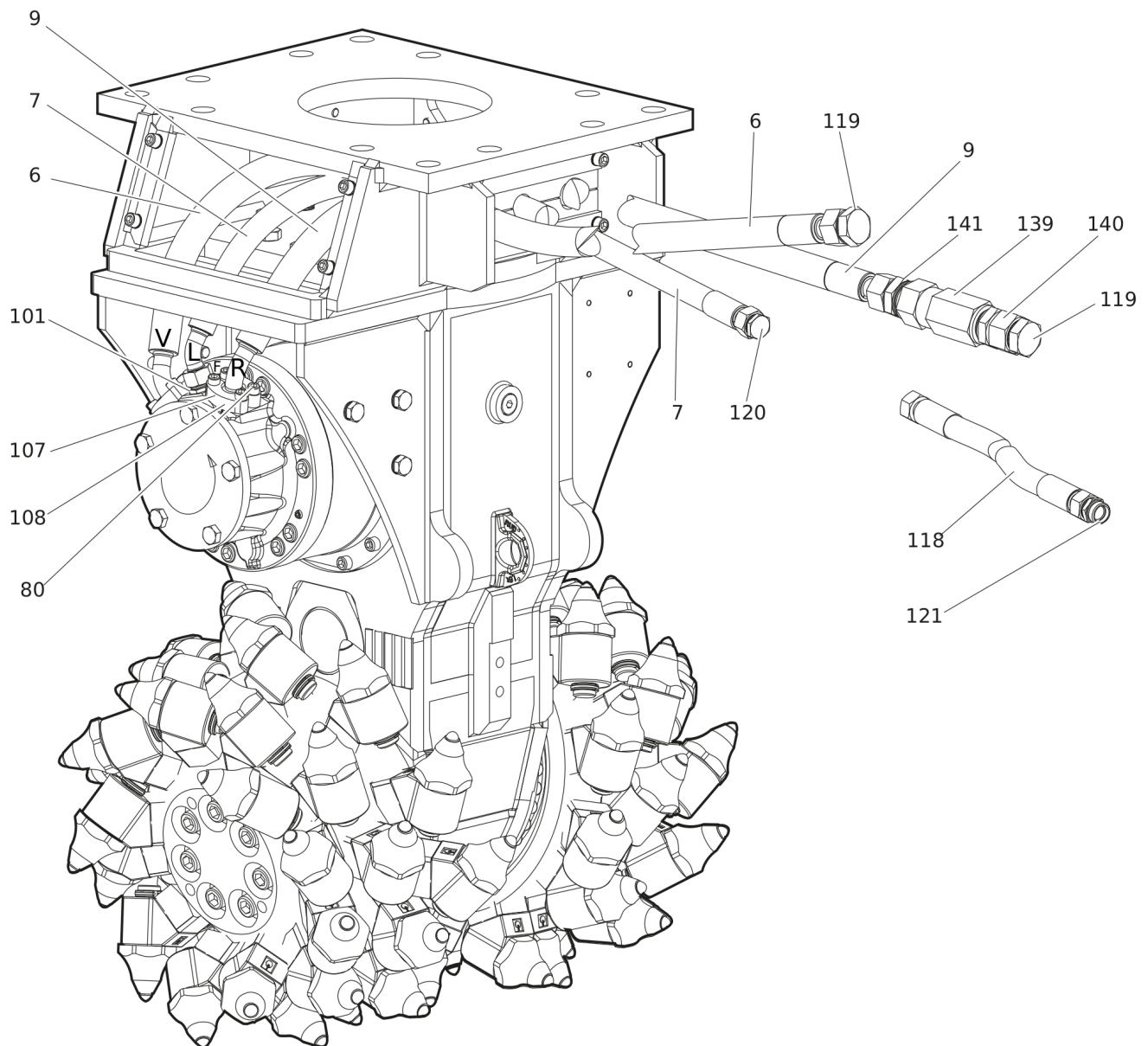
Refer to the DocMine web page for most up-to-date information. The printed information might be outdated.

Thu Feb 29 10:47:58 UTC 2024

Item	Part No.	Name	Qty	L
108	3311001361	O-ring	2	
118	3311004015	Hydraulic hose	1	
119	3311004016	Plug	2	
120	3311003877	Plug	1	
121	3311004017	Fitting	1	
139	3311002965	Check valve	1	
140	3311004019	Fitting	1	
141	3311004020	Fitting	1	

This page intentionally left blank

Mechanical Transverse Drum Cutter, part 3 (Intermediate bracket)



Item	Part No.	Name	Qty	L
KIT	3311006344	Hose kit metric, 2.5 m (Standard)	1	
6	3311001540	Hydraulic hose	1	
7	3311000244	Hydraulic hose	1	
9	3311001540	Hydraulic hose	1	
80	3311001805	Allen screw	8	
101	3311001538	Fitting	1	
107	3311001537	Flange	2	
108	3311001361	O-ring	2	
118	3311001582	Hydraulic hose	1	
119	3311000118	Plug	2	
120	3311000119	Plug	1	
121	3311000120	Fitting	1	
139	3311002965	Check valve	1	
140	3311000085	Fitting	1	
141	3311000086	Fitting	1	
KIT	3311006339	Hose kit JIC, 2.5 m (Optional)	1	
6	3311005618	Hydraulic hose	1	
7	3311002208	Hydraulic hose	1	
9	3311005618	Hydraulic hose	1	
80	3311001805	Allen screw	8	
101	3311003082	Fitting	1	
107	3311001537	Flange	2	
108	3311001361	O-ring	2	
118	3311002209	Hydraulic hose	1	
119	3311002745	Plug	2	
120	3311002747	Plug	1	
121	3311002211	Fitting	1	
139	3311002965	Check valve	1	
140	3311002744	Fitting	1	
141	3311003016	Fitting	1	
KIT	3311006332	Hose kit BSP, 2.5 m (Optional)	1	
6	3311004859	Hydraulic hose	1	
7	3311004656	Hydraulic hose	1	
9	3311004859	Hydraulic hose	1	
80	3311001805	Allen screw	8	
101	3311001538	Fitting	1	
107	3311001537	Flange	2	

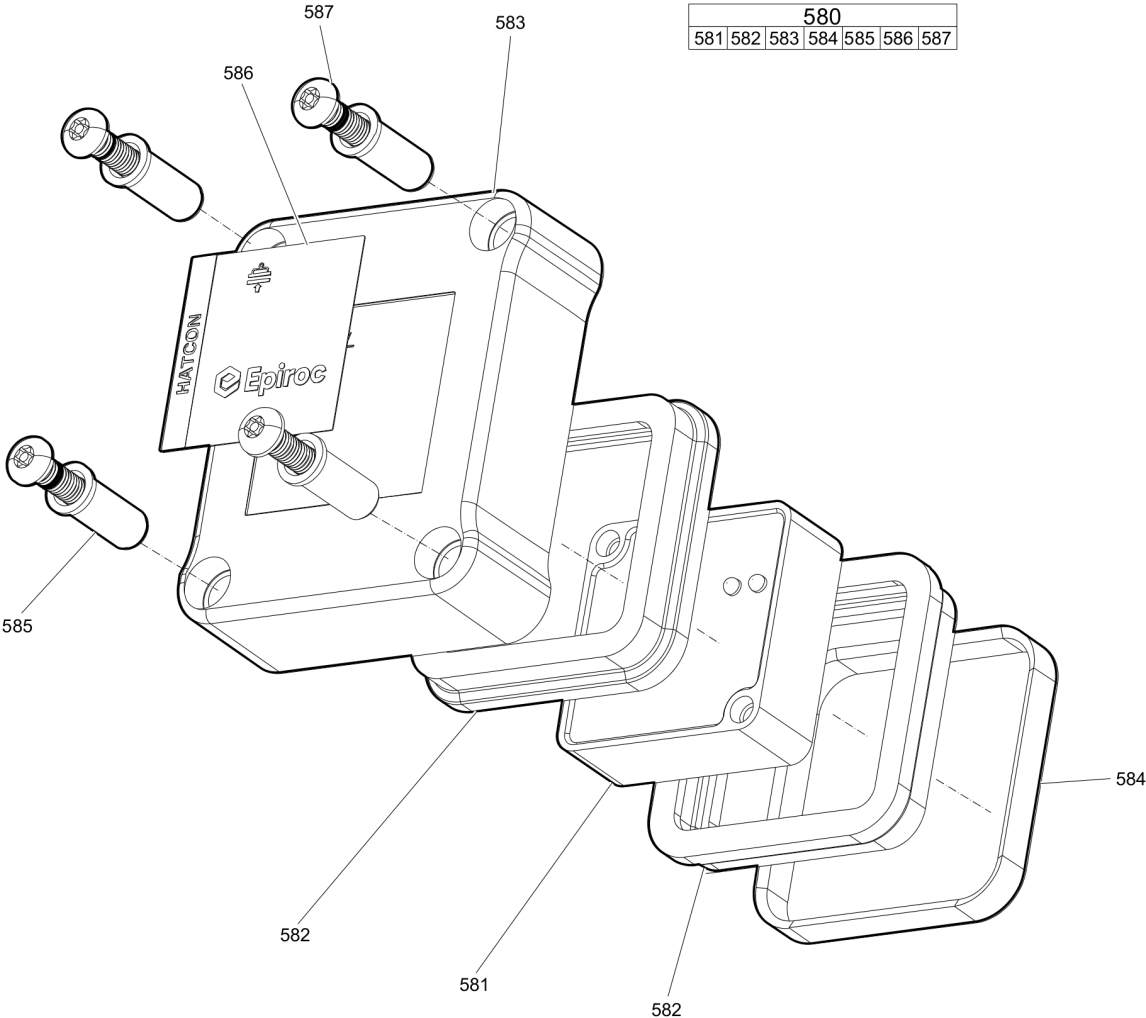
Refer to the DocMine web page for most up-to-date information. The printed information might be outdated.

Thu Feb 29 10:47:59 UTC 2024

Item	Part No.	Name	Qty	L
108	3311001361	O-ring	2	
118	3311004015	Hydraulic hose	1	
119	3311004016	Plug	2	
120	3311003877	Plug	1	
121	3311004017	Fitting	1	
139	3311002965	Check valve	1	
140	3311004019	Fitting	1	
141	3311004020	Fitting	1	

This page intentionally left blank

Mechanical HATCON



Item	Part No.	Name	Qty	L
580(581-587)		HATCON	1	A
581		TRACKING MODULE HATCON	1	
582	3315439130	DAMPER HATCON	2	
583	3315439110	HOUSING TYPE 1 HATCON	1	
584	3315439140	LOCK RING HATCON	1	
585	3315439120	SLEEVE HATCON	4	
586	3315439100	PRODUCT LABEL HATCON	1	
587	3315442600	SCREW HATCON	4	

Comments for Page: HATCON

A | part number see chapter "Optional equipment"

Mechanical Tightening torques

NO EXPLODED VIEW
AVAILABLE
FOR THIS BOM

Item	Part No.	Name	Qty	L
75	-	Allen screw - 560 Nm (413 ft lbf)	-	A
76, 96	-	Hexagon head screw - 415 Nm (306 ft lbf)	-	B
587	-	SCREW HATCON - 22 Nm (16 ft lbf)	-	C

Comments for Page: Tightening torques

(L)OCAL REMARKS

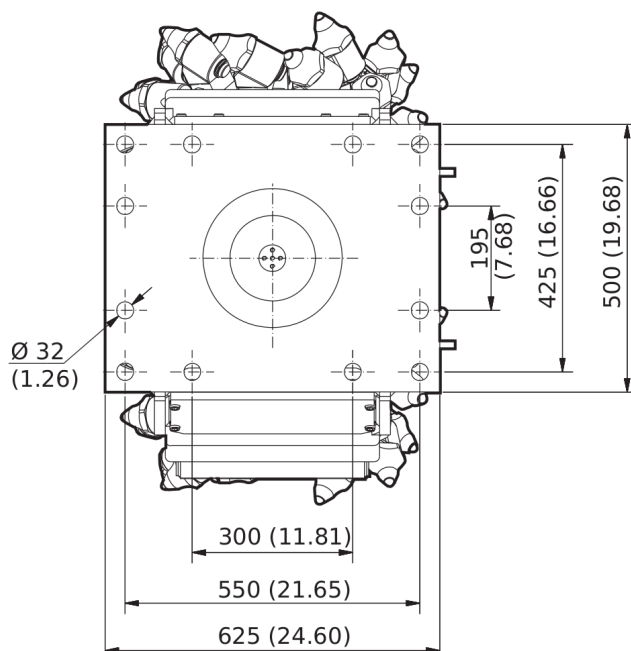
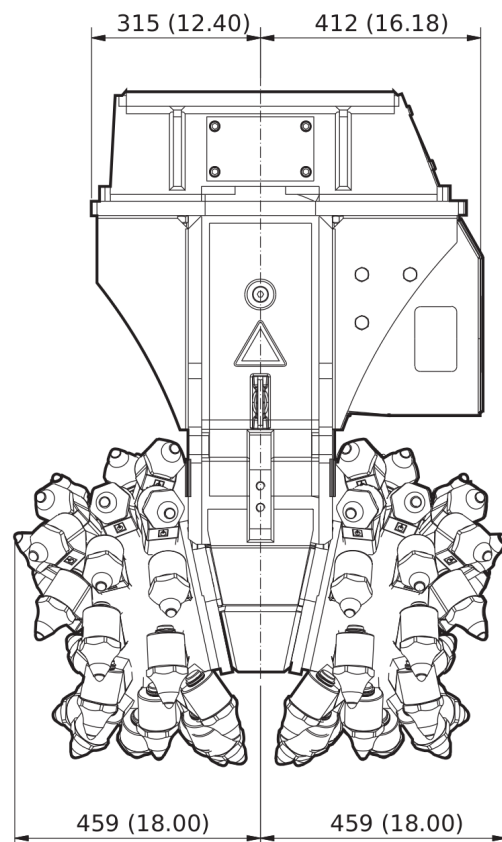
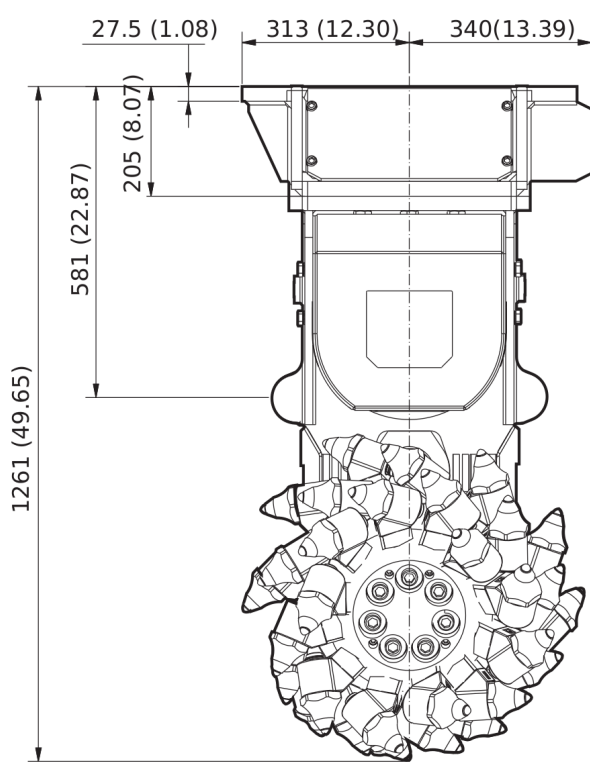
A | Allen key size 17

B | Open-ended wrench size 30

C | Security bit HATCON

This page intentionally left blank

Mechanical Dimensions (Intermediate bracket)

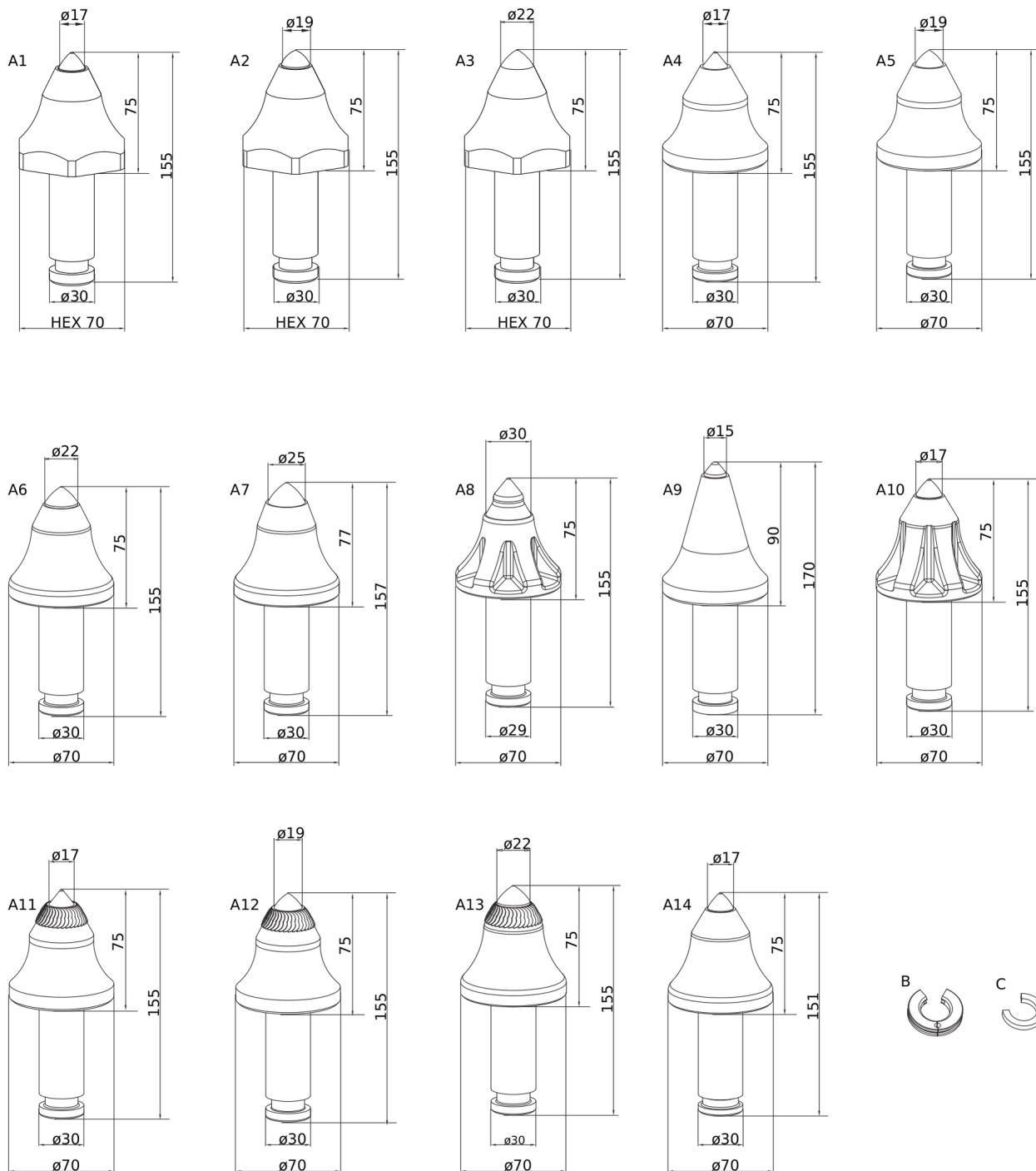


Refer to the DocMine web page for most up-to-date information. The printed information might be outdated.

Thu Feb 29 10:48:01 UTC 2024

This page intentionally left blank

Options / accessories Picks and retainers kits



Refer to the DocMine web page for most up-to-date information. The printed information might be outdated.

Thu Feb 29 10:48:02 UTC 2024

Item	Part No.	Name	Qty	L
1	3311006195	Picks and retainers kit	1	
A1		HexPick 17/30	10	
B	3311000978	Quick snap	10	
2	3311006298	Picks and retainers kit	1	
A1		HexPick 17/30	10	
C	3311002869	Retainer clip	10	
3	3311006196	Picks and retainers kit	1	
A2		HexPick 19/30	10	
B	3311000978	Quick snap	10	
4	3311006299	Picks and retainers kit	1	
A2		HexPick 19/30	10	
C	3311002869	Retainer clip	10	
5	3311006351	Picks and retainers kit	10	
A3		HexPick 22/30	10	
C	3311002869	Retainer clip	10	
6	3311004575	Picks and retainers kit	1	
A4		ER17/75/70/30 Q	10	
B	3311000978	Quick snap	10	
7	3311004606	Picks and retainers kit	1	
A4		ER17/75/70/30 Q	10	
C	3311002869	Retainer clip	10	
8	3311004576	Picks and retainers kit	1	
A5		ER19/75/70/30 Q	10	
B	3311000978	Quick snap	10	
9	3311004607	Picks and retainers kit	1	
A5		ER19/75/70/30 Q	10	
C	3311002869	Retainer clip	10	
10	3311004577	Picks and retainers kit	1	
A6		ER22/75/70/30 Q	10	
B	3311000978	Quick snap	10	
11	3311004608	Picks and retainers kit	1	
A6		ER22/75/70/30 Q	10	
C	3311002869	Retainer clip	10	
12	3311004578	Picks and retainers kit	1	
A7		ER25/75/70/30 Q	8	
B	3311000978	Quick snap	8	
13	3311004609	Picks and retainers kit	1	

Refer to the DocMine web page for most up-to-date information. The printed information might be outdated.

Thu Feb 29 10:48:02 UTC 2024

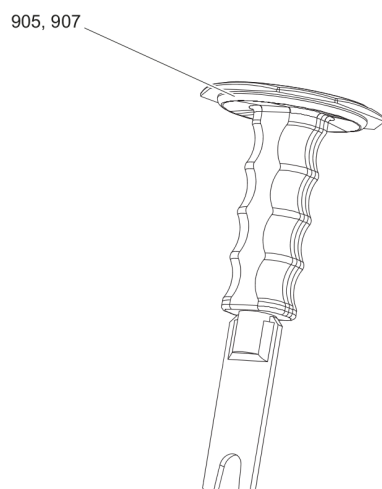
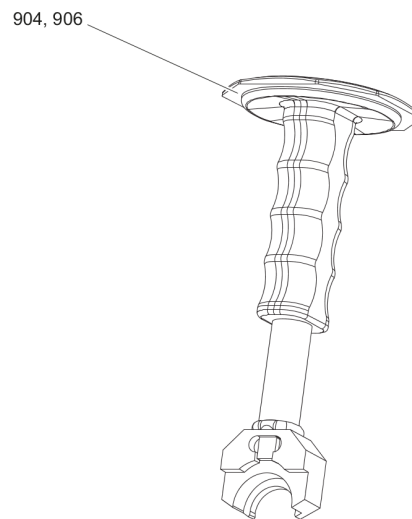
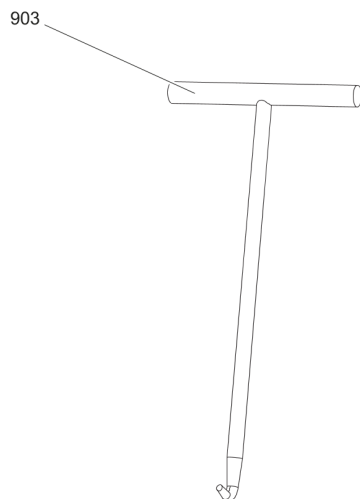
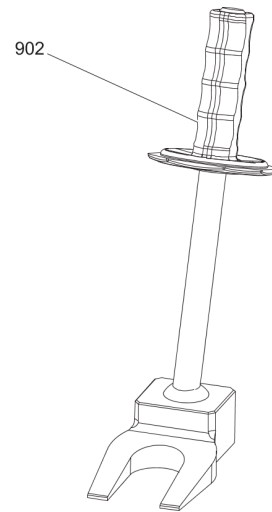
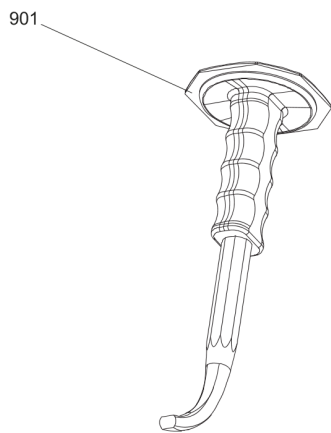
Item	Part No.	Name	Qty	L
A7		ER25/75/70/30 Q	8	
C	3311002869	Retainer clip	8	
14	3311004579	Picks and retainers kit	1	
A8		ER30/77/70/30 Q	10	
B	3311000978	Quick snap	10	
15	3311004613	Picks and retainers kit	1	
A8		ER30/77/70/30 Q	10	
C	3311002869	Retainer clip	10	
16	3311004580	Picks and retainers kit	1	
A9		ER15/90/70/30 Q	10	
B	3311000978	Quick snap	10	
17	3311004614	Picks and retainers kit	1	
A9		ER15/90/70/30 Q	10	
C	3311002869	Retainer clip	10	
18	3311004581	Picks and retainers kit	1	
A10		ER17/75/70/30 QE	10	
B	3311000978	Quick snap	10	
19	3311004615	Picks and retainers kit	1	
A10		ER17/75/70/30 QE	10	
C	3311002869	Retainer clip	10	
20	3311004582	Picks and retainers kit	1	
A11		ER17/75/70/30 PQ	10	
B	3311000978	Quick snap	10	
21	3311004616	Picks and retainers kit	1	
A11		ER17/75/70/30 PQ	10	
C	3311002869	Retainer clip	10	
22	3311004583	Picks and retainers kit	1	
A12		ER19/75/70/30 PQ	10	
B	3311000978	Quick snap	10	
23	3311004617	Picks and retainers kit	1	
A12		ER19/75/70/30 PQ	10	
C	3311002869	Retainer clip	10	
24	3311004584	Picks and retainers kit	1	
A13		ER22/75/70/30 PQ	10	
B	3311000978	Quick snap	10	
20	3311004618	Picks and retainers kit	1	
A13		ER22/75/70/30 PQ	10	

Refer to the DocMine web page for most up-to-date information. The printed information might be outdated.

Thu Feb 29 10:48:02 UTC 2024

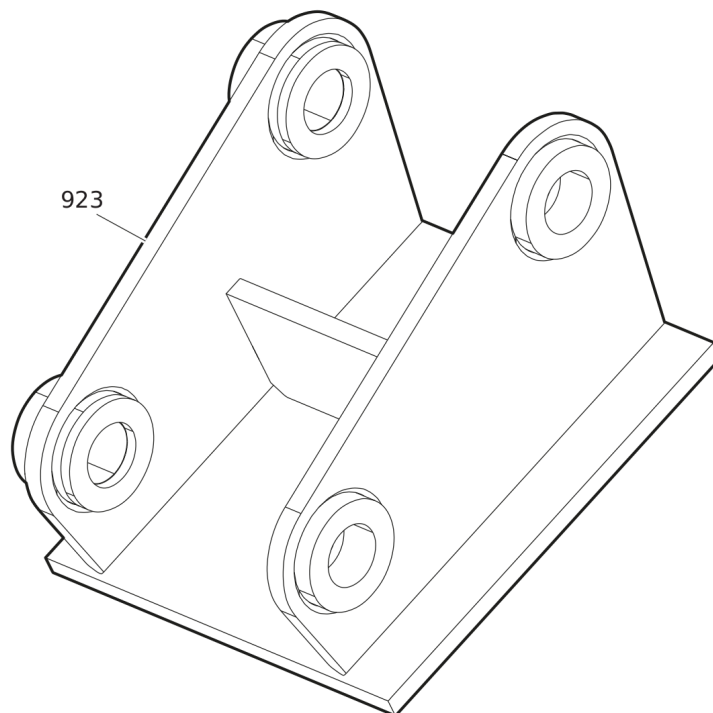
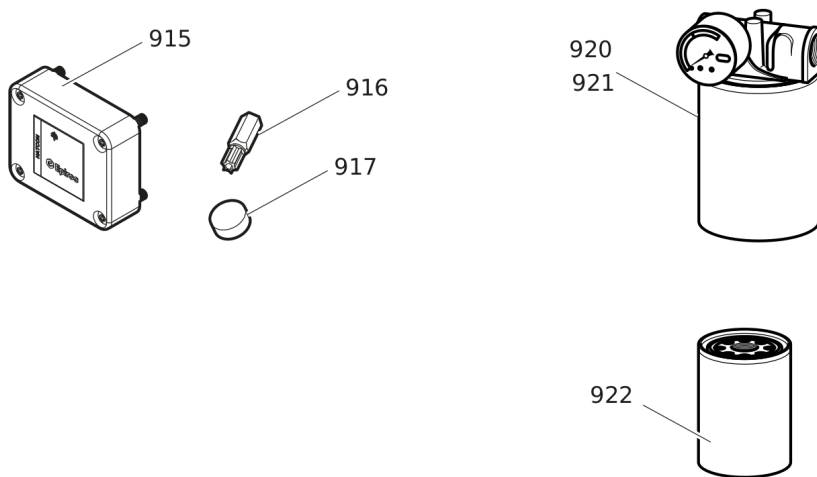
Item	Part No.	Name	Qty	L
C	3311002869	Retainer clip	10	
21	3311004585	Picks and retainers kit	1	
A14		ER17/75/70/30 C	10	
C	3311002869	Retainer clip	10	

Options / accessories Tools for picks



Item	Part No.	Name	Qty	L
901	3311000989	Knock out tool	1	
902	3311002872	Knock out tool for stuck picks	1	
903	3311000980	Puller tool for quick snap retainers	1	
904	3311004217	Mounting toolfor retaining clips	1	
905	3311004218	Dismantling toolfor retaining clips	1	
906	3311002876	Mounting toolfor retaining clips (ER17/75/70/30 C)	1	
907	3311002195	Dismantling toolfor retaining clips (ER17/75/70/30 C)	1	

Options / accessories Optional equipment



Item	Part No.	Name	Qty	L
915	3315442500	HATCON KIT 1 (3G)	1	A
915	3315442520	HATCON KIT 1 (LTE)	1	
916	3315439105	SECURITY BIT HATCON	1	
917	3315439106	MAGNET HATCON	1	
920	3311003111	Hydraulic filter set for leakage oil, metric	1	
921	3311003195	Hydraulic filter set for leakage oil, JIC	1	
922	3311003087	Filter cartridge for leakage oil, metric and JIC	1	
923		ADAPTER PLATE matching the carrier. Consult the authorized Customer Center/Dealer in your area.	1	

Comments for Page: Optional equipment

A | with item 916 and 917

Any unauthorized use or copying of the contents or any part thereof is prohibited.
This applies in particular to trademarks, model denominations, part numbers, and drawings.