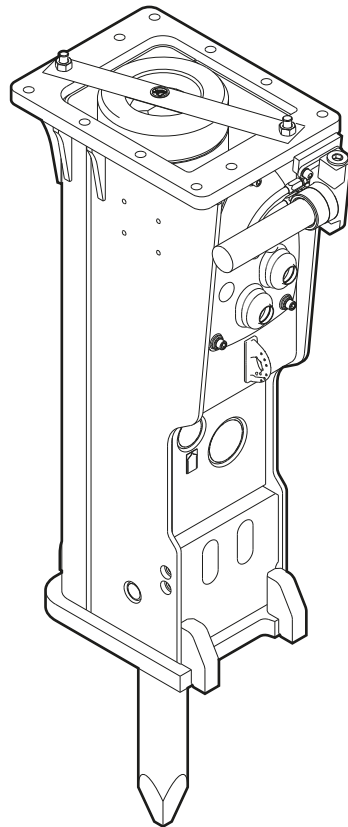


EC 100T CL

Spare parts list Hydraulic breakers

EC 100T CL s/n DEQ241090 -



General information

This spare parts list applies to the following:

Part number	Description
8460050159	Hydraulic breaker EC 100T CL with ContiLube™ II
8460050161	Hydraulic breaker EC 100T CL with ContiLube™ II and HATCON (LTE)

Use only authorized parts. Any damage or malfunction caused by the use of unauthorized parts is not covered by Warranty or Product Liability. Any unauthorized use or copying of the contents or any part thereof is prohibited. This applies in particular to trademarks, model denominations, part numbers, and drawings.

Instructions for use

This spare parts list contains no safety regulations and is merely intended to assist in the ordering of spare parts.

For information about operating, servicing, or repairing, the relevant Safety and operating instructions must be consulted at all costs.

Please observe the safety instructions listed in the relevant Safety and operating instructions!

Instructions for ordering

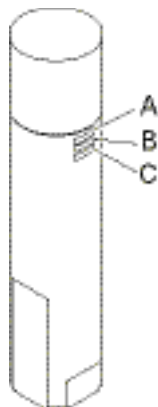
It is essential to indicate the serial number of the hydraulic attachment when ordering spare parts!

Please note the full identification number of your hydraulic attachment.

The code can be found on the main body.

Determine the quantity of individual parts which are required and need to be ordered. The order must indicate the following details:

- full identification code of the hydraulic attachment
- required quantity
- part number
- description



- A. Type
- B. Serial number
- C. Main body number

Service, repair and wear part kits

Label kit	1
Kit list	3

Mechanical

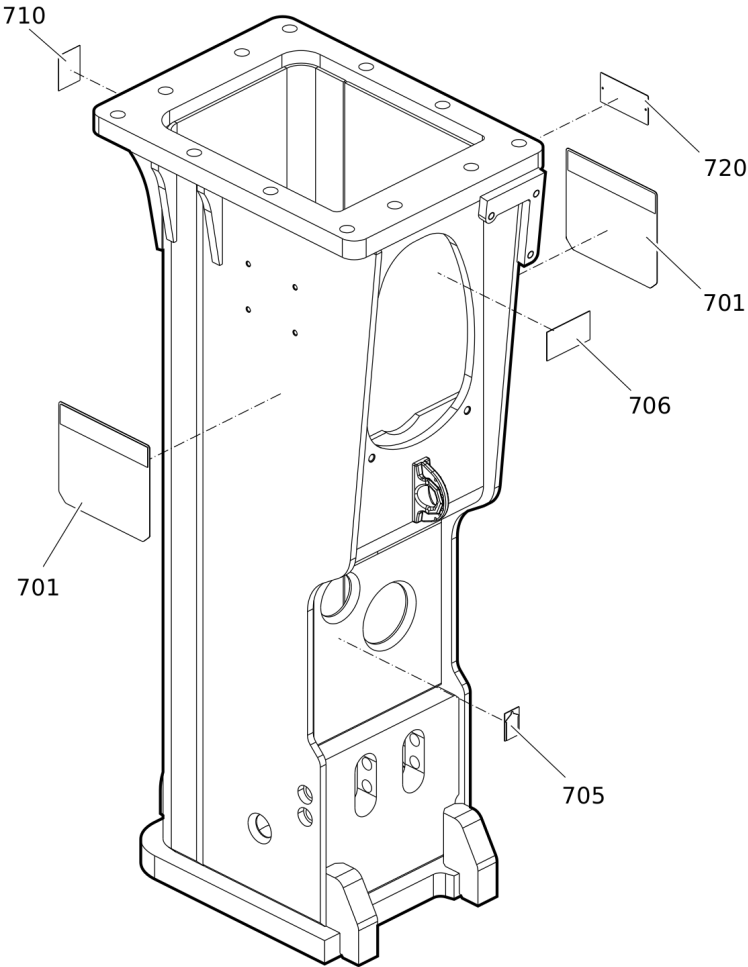
Hydraulic breaker	5
Percussion unit	7
Main body complete and Percussion piston	9
Connecting parts for automatic lubrication system	11
HATCON	13
Tightening torques	15
Dimensions	17

Options / accessories

Hydraulic hoses	18
Optional equipment	21
Working tools	23

Service, repair and wear part kits Label kit

700			
701	705	706	710



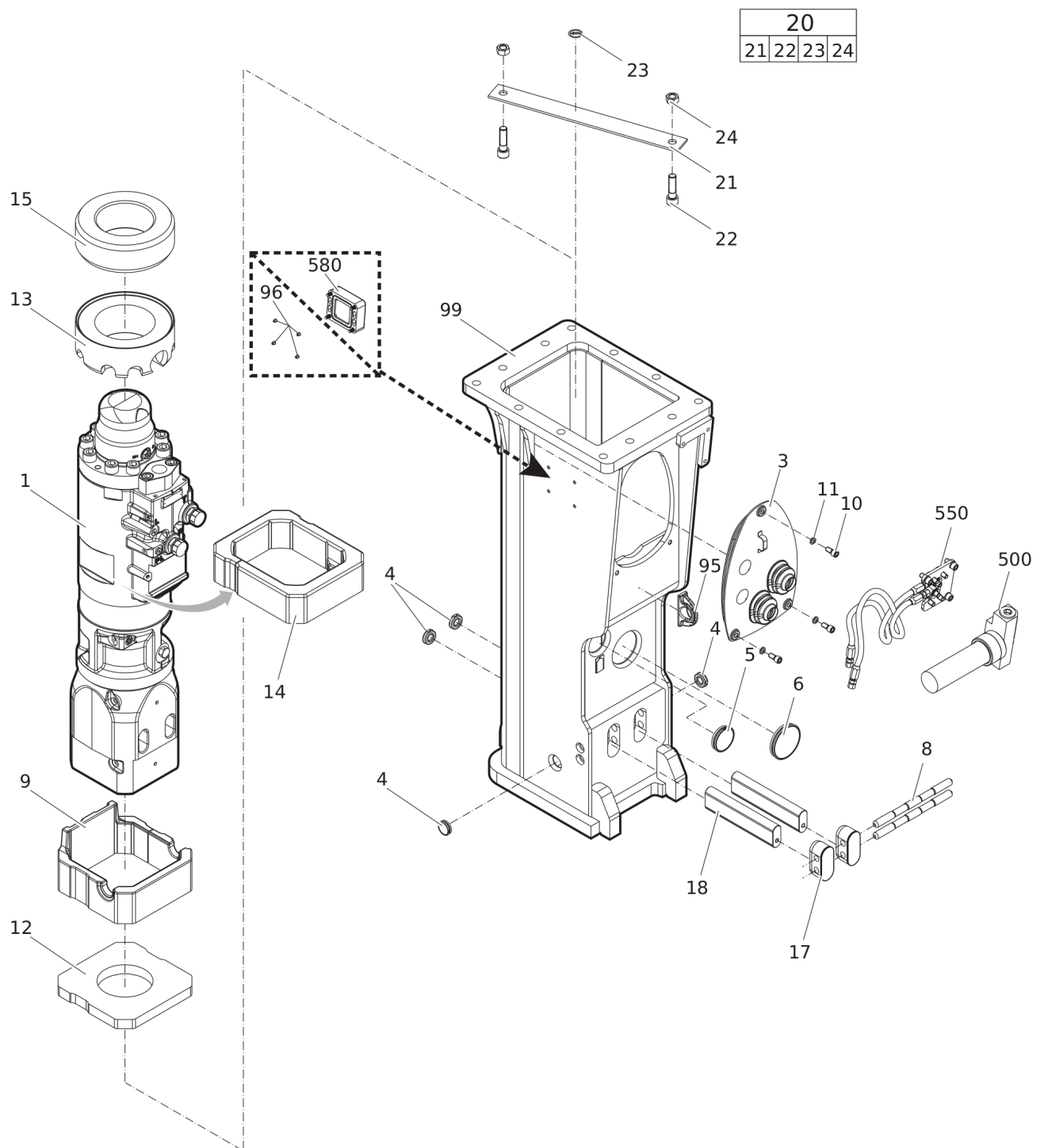
Item	Part No.	Name	Qty	L
700(701-710)	3363121467	LABEL KIT	1	
701		LABEL "EC 100 Epiroc"	2	
705		LABEL - LUBRICATING SYMBOL	1	
706		GAS PRESSURE LABEL	2	
710		SOUND POWER LABEL	1	
720		NAME PLATE - Consult the authorized Customer Center/Dealer in your area.	1	

Service, repair and wear part kits Kit list

NO EXPLODED VIEW
AVAILABLE
FOR THIS BOM

Item	Part No.	Name	Qty	L
KIT	3363122460	SEAL KIT	1	
101	3361853317	O-RING	1	
107	3360314494	O-RING	1	
160	3360314551	O-RING	2	
182	3360478426	THREADED PLUG	1	
183	3360175125	O-RING	1	
201	3363109525	SEAL	1	
202	3363109527	BACK-UP RING	1	
203	3363091710	SEAL	1	
302	3363110010	SEAL	6	
303	3363066582	O-RING	1	
305	3363122402	SEAL	2	
306	3363091714	WIPER	1	
307	3363083573	SEAL	8	
308	3362267583	SEAL	1	
309	3362267581	SEAL	1	

Mechanical Hydraulic breaker



Refer to the DocMine web page for most up-to-date information. The printed information might be outdated.

Thu Feb 13 06:27:28 UTC 2025

Item	Part No.	Name	Qty	L
1		PERCUSSION UNIT	1	A
3	3315443235	COVER	1	
4	3362267897	PLUG	4	
5	3362267893	PLUG	1	
6	3315444046	PLUG	1	
8	3315443248	BOLT	2	
9	3315443242	LOWER GUIDE	1	
10	3360103750	ALLEN SCREW	3	
11	3361850596	PAIR OF LOCK WASHERS	3	
12	3315443241	SHOCK ABSORBER	1	
13	3315443247	SPACER	1	
14	3315443244	UPPER GUIDE	1	
15	3363104943	ELASTIC PAD	1	
16	3360026786	ALLEN SCREW	2	
17	3363114673	PLUG	2	
18	3315443234	RETAINER BAR	2	
20(21-24)	3363083731	TRANSPORT SAFETY DEVICE, complete	1	
21		TRANSPORT SAFETY DEVICE	1	
22	3360026786	ALLEN SCREW	2	
23	3363091872	LABEL TRANSPORT SAFETY DEVICE	1	
24	3360103251	NUT	2	
95	3363111993	LIFTING EYE	1	B
96	3315439145	PROTECTIVE PLUG HATCON	4	C
99	3315442106	BREAKER BOX	1	D
500	3363067123	AUTOMATIC LUBRICATION SYSTEM	1	
550		CONNECTING PARTS	1	A
580		HATCON	1	E

Comments for Page: Hydraulic breaker

(L)OCAL REMARKS

A | see separate chapter

B | professional welding process necessary

C | only for hydraulic breakers without HATCON

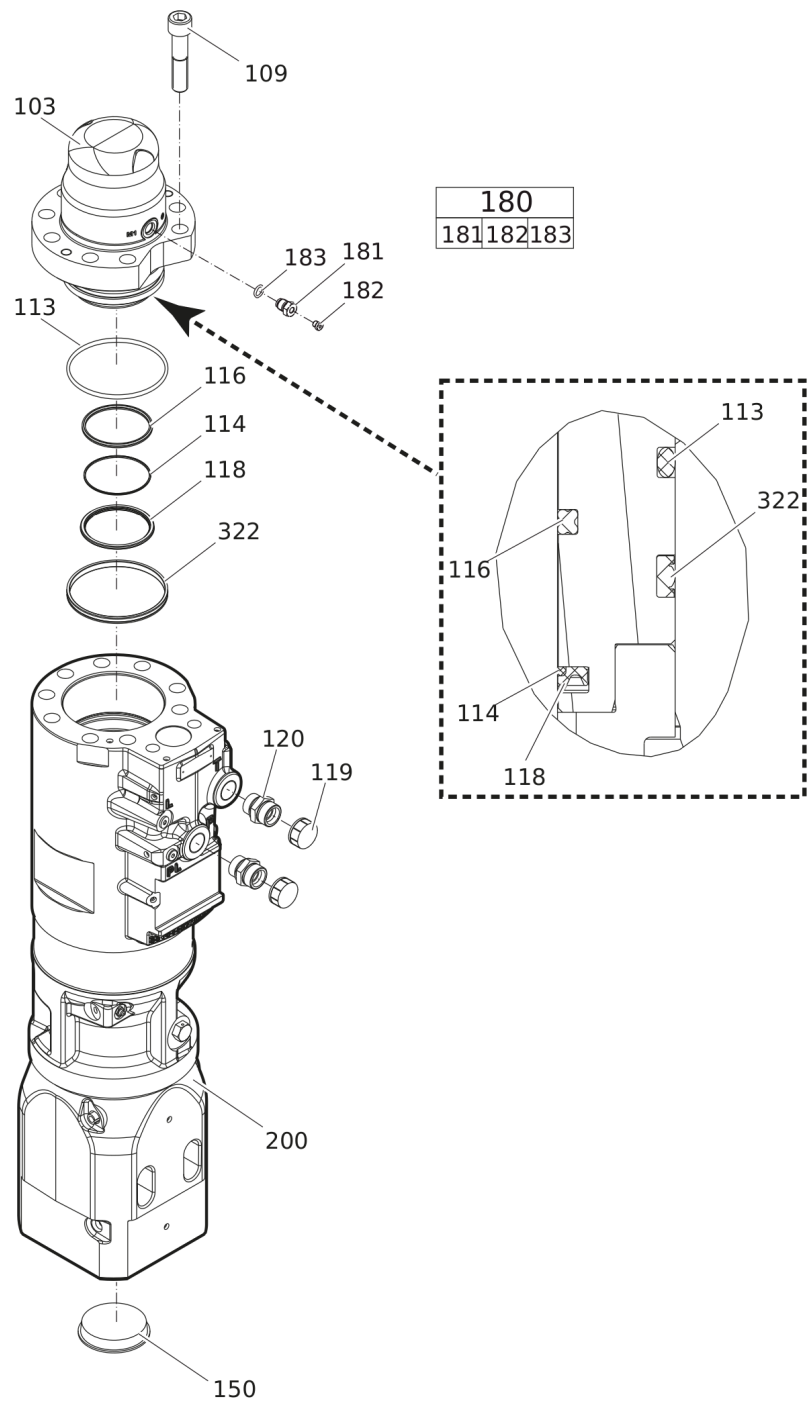
D | with item 95 and 96

E | only for hydraulic breakers with HATCON / see separate chapter

Refer to the DocMine web page for most up-to-date information. The printed information might be outdated.

Thu Feb 13 06:27:29 UTC 2025

Mechanical Percussion unit



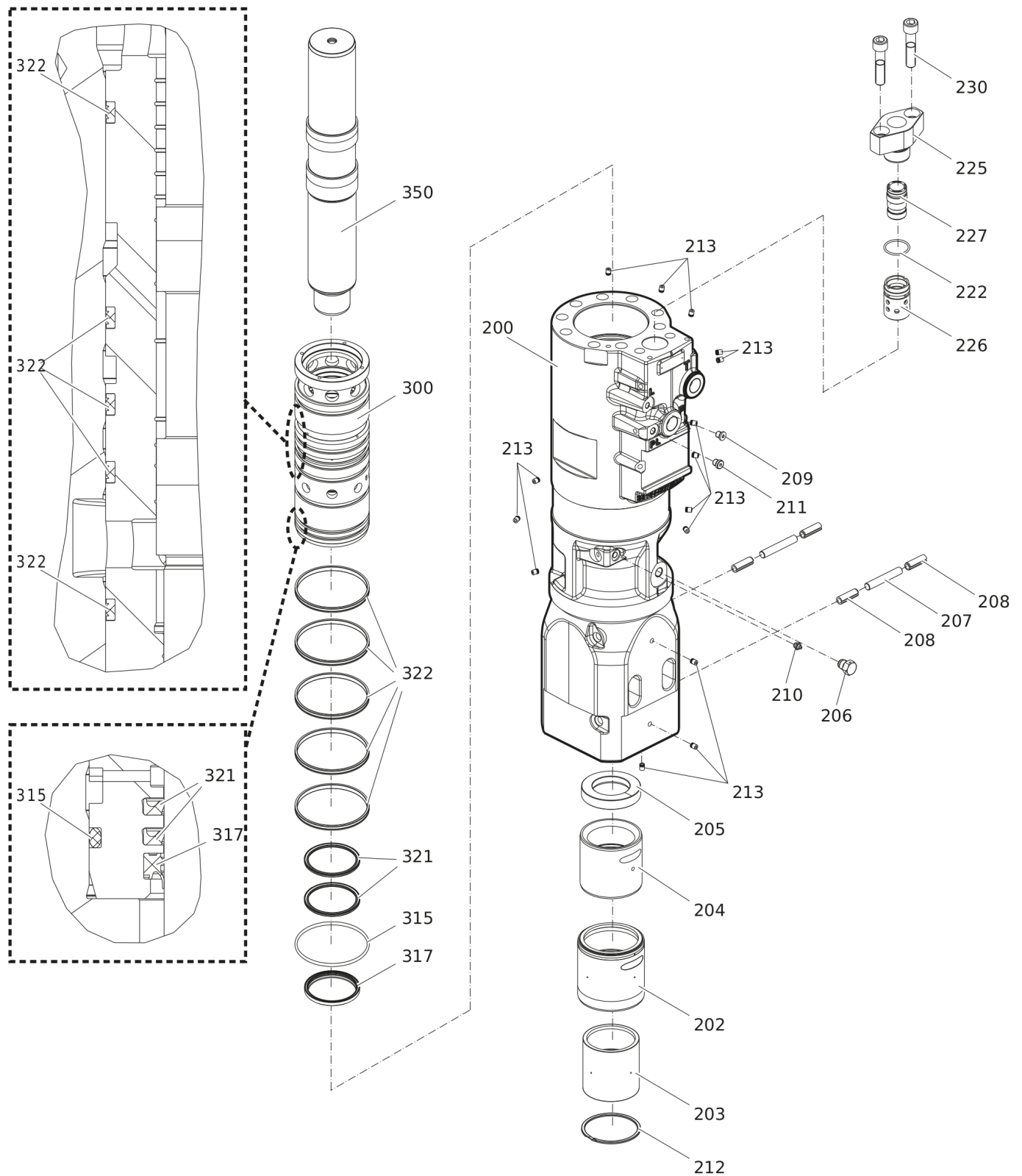
Item	Part No.	Name	Qty	L
103	3315443211	BACK HEAD	1	
109	0211196235	SCREW	9	
113	3361853317	O-RING	1	
114	3363109527	BACK-UP RING	1	
116	3363091710	SEAL	1	
118	3363109525	SEAL	1	
119	0686925030	CAP	2	
120	0580001476	PIPE COUPLING	2	
150	3363109425	COVER	1	
180(181-183)	3363087286	FILLING VALVE, complete	1	
181		FILLING VALVE	1	
182	3360478426	THREADED PLUG	1	
183	3360175125	O-RING	1	
200	3315443202	MAIN BODY	1	A
322	3363110010	SEAL	1	

Comments for Page: Percussion unit

(L)OCAL REMARKS

A | see separate chapter

Mechanical Main body complete and Percussion piston

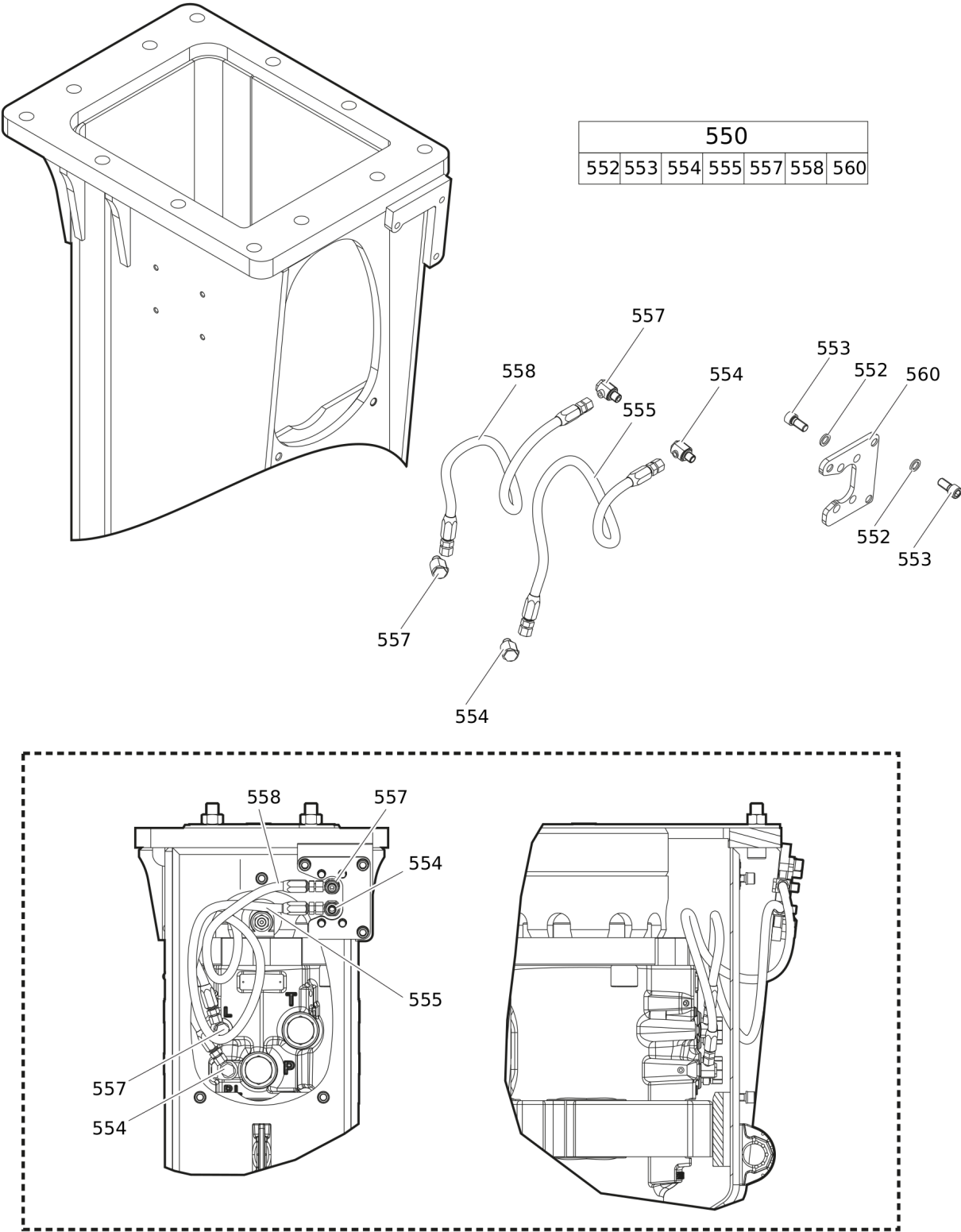


Refer to the DocMine web page for most up-to-date information. The printed information might be outdated.

Thu Feb 13 06:27:30 UTC 2025

Item	Part No.	Name	Qty	L
200	3315443202	MAIN BODY	1	
202	3315443230	GUIDE BUSH	1	
203	3315443231	WEAR BUSH	1	
204	3363109429	WEAR BUSH	1	
205	3363109427	IMPACT RING	1	
206	3363109435	NON RETURN VALVE	1	
207	3362261509	PIN	2	
208	3363091201	SPRING DOWEL SLEEVE	4	
209	3360478439	THREADED PLUG	1	
210	3360433774	GREASE NIPPLE	1	
211	3363066963	PLUG	1	
212	3315443291	LOCK RING	1	
213	0686100009	PLUG	15	
222	3360314494	O-RING	1	
225	3315443215	VALVE COVER	1	
226	3363109433	CONTROL BUSH	1	
227	3363109417	MAIN CONTROL VALVE	1	
230	3315444202	ALLEN SCREW	2	
300	3315443213	LINER	1	
315	3363066582	O-RING	1	
317	3363091714	WIPER	1	
321	3363122402	SEAL	2	
322	3363110010	SEAL	5	
350	3363109413	PERCUSSION PISTON	1	

Mechanical Connecting parts for automatic lubrication system



Item	Part No.	Name	Qty	L
550(552-560)		CONNECTING PARTS	1	
552	3361850596	PAIR OF LOCK WASHERS	7	
553	3360103750	ALLEN SCREW	7	A
554	3363066233	FITTING	2	B
555	3363083873	HYDRAULIC HOSE	1	C
557	3363066234	FITTING	2	D
558	3363087394	HYDRAULIC HOSE	1	E
560	3363115928	SUPPORT	1	

Comments for Page: Connecting parts for automatic lubrication system

(L)OCAL REMARKS

A | secure all 4 allen screws with Loctite 243 screwed in the ContiLube® II

B | secure with Loctite 243

C | Grease line

secure with Loctite 243

Route the hydraulic hoses as shown on the drawing. It must be ensured that the hydraulic hoses can move freely and are not in contact at any point.

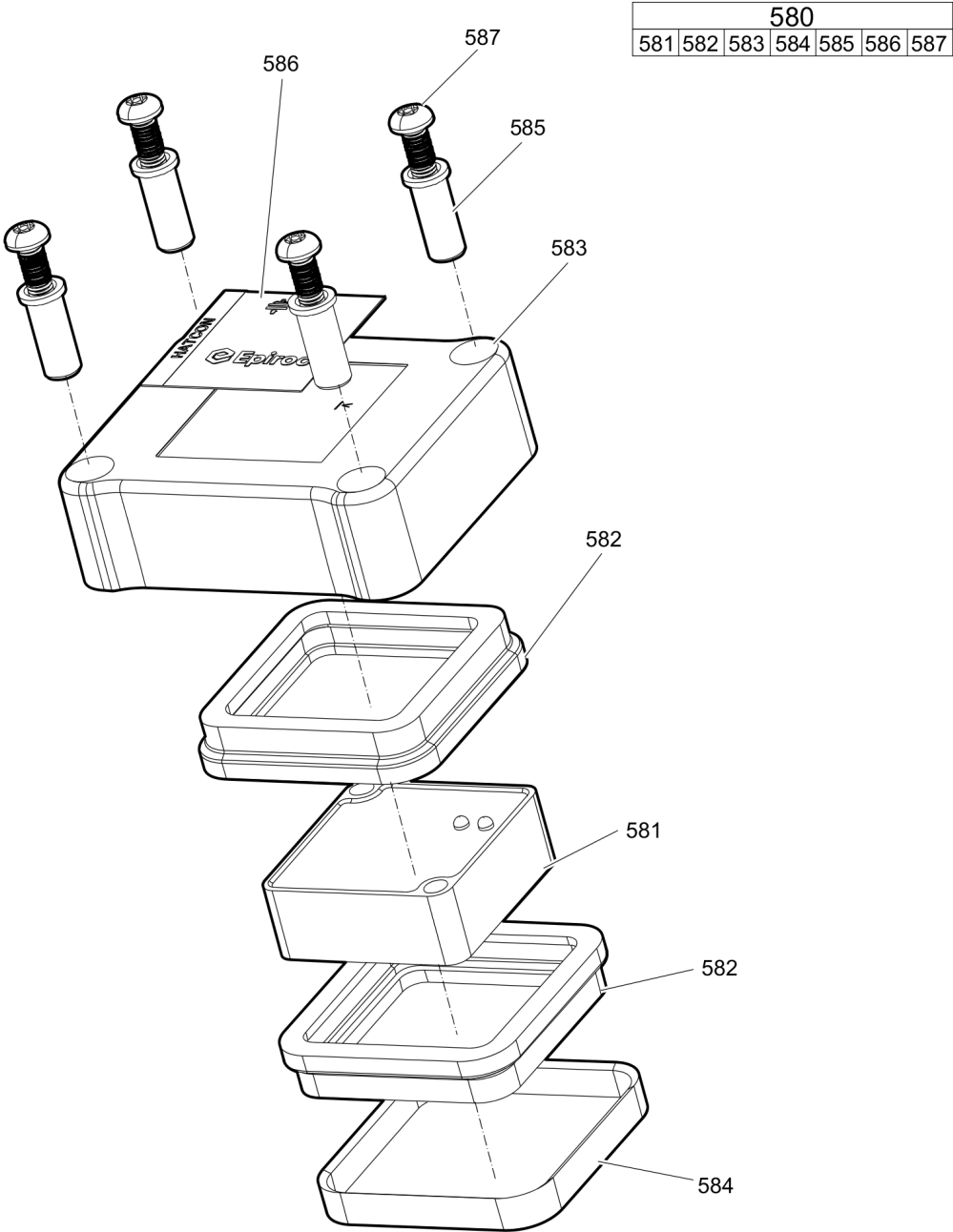
D | secure with Loctite 243

E | Oil line

secure with Loctite 243

Route the hydraulic hoses as shown on the drawing. It must be ensured that the hydraulic hoses can move freely and are not in contact at any point.

Mechanical HATCON



Item	Part No.	Name	Qty	L
580(581-587)		HATCON	1	A
581		TRACKING MODULE HATCON	1	
582	3315439130	DAMPER HATCON	2	
583	3315439110	HOUSING TYPE 1 HATCON	1	
584	3315439140	LOCK RING HATCON	1	
585	3315439120	SLEEVE HATCON	4	
586	3315439100	PRODUCT LABEL HATCON	1	
587	3315442600	SCREW HATCON	4	

Comments for Page: HATCON

A | part number see chapter "Optional equipment"

Mechanical Tightening torques

NO EXPLODED VIEW
AVAILABLE
FOR THIS BOM

Item	Part No.	Name	Qty	L
35		ALLEN SCREW	-	A
108		ALLEN SCREW	-	B
109		FITTING	-	C
181		FILLING VALVE	-	D
182		THREADED PLUG	-	E
192		TENSIONING BOLT	-	F
339		NON RETURN VALVE	-	G
587		SCREW HATCON	-	H

Comments for Page: Tightening torques

(L)OCAL REMARKS

A | Allen key size 10 - 10 Nm (7 ft lbf)

B | Allen key size 10 - 85 Nm (63 ft lbf)

C | Open-end wrench size 41 - 120 Nm (89 ft lbf)

D | Socket spanner size 22 - 130 Nm (96 ft lbf)

E | Allen key size 5 - 20 Nm (15 ft lbf)

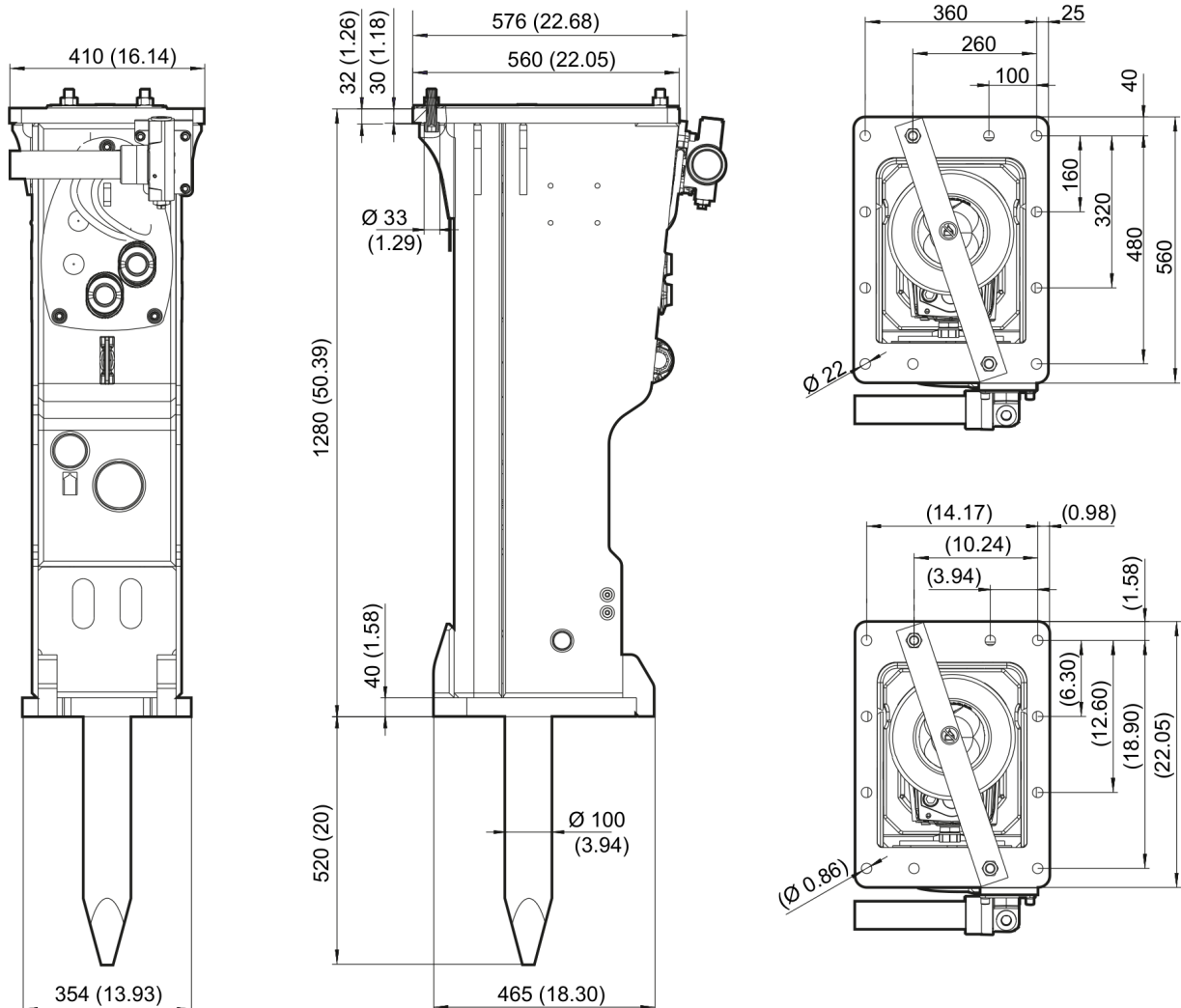
F | Torque wrench or Power wrench size 32

1. Pre-tighten the bolts to 100 Nm (74 ft lbf), proceeding in a crosswise fashion,
2. pre-tighten the bolts to 100 Nm (74 ft lbf) again, proceeding in a crosswise fashion,
3. then tighten each bolt through 90° (1 ½ sides of hexagonal head) in a crosswise fashion,
4. finally tighten each bolt again through 90° (1 ½ sides of hexagonal head) in a crosswise fashion

G | Socket wrench size 27 - 200 Nm (148 ft lbf)

H | Security bit HATCON - 22 Nm (16 ft lbf)

Mechanical Dimensions



Refer to the DocMine web page for most up-to-date information. The printed information might be outdated.

Thu Feb 13 06:27:32 UTC 2025

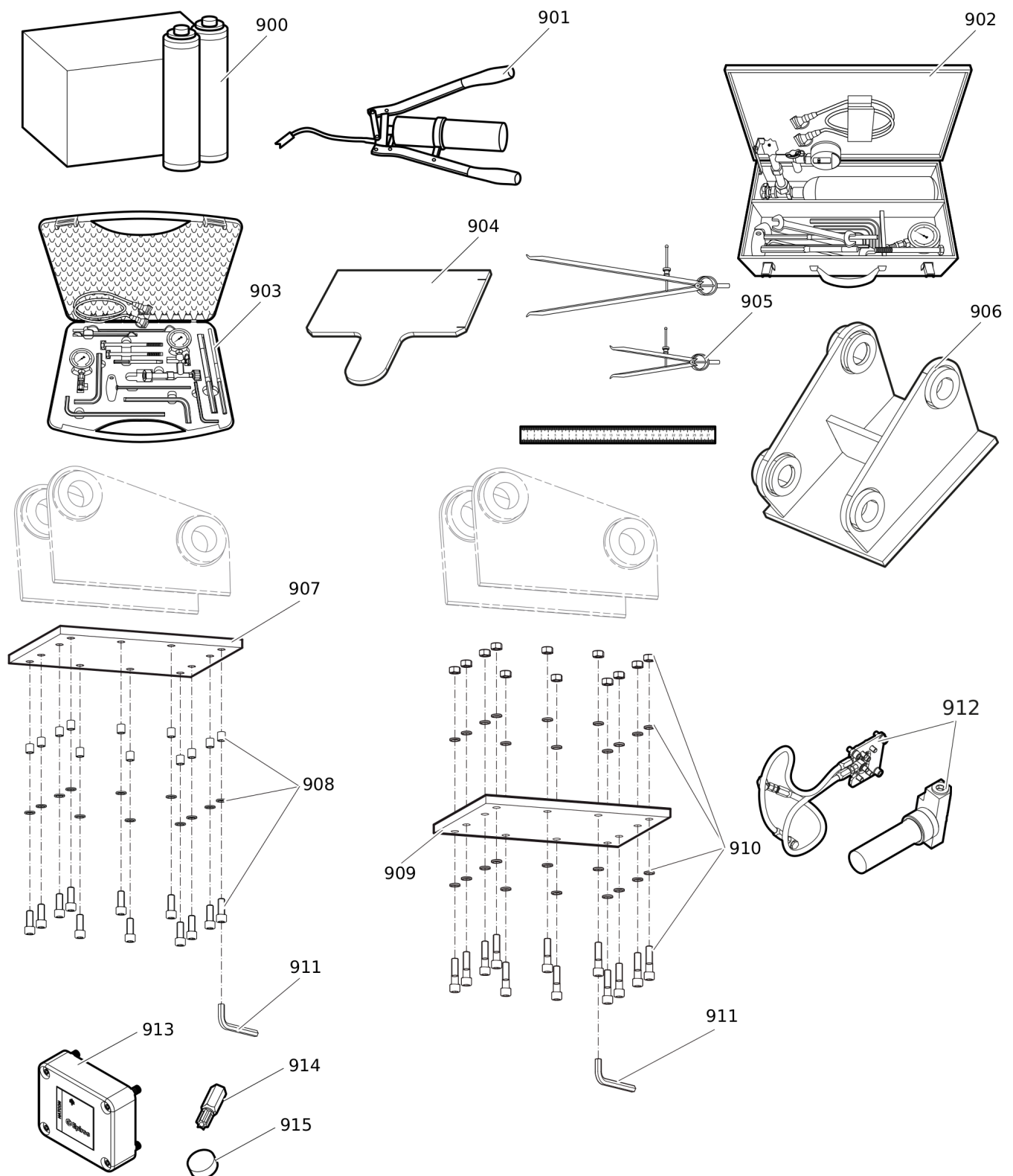
This page intentionally left blank

Options / accessories Hydraulic hoses

NO EXPLODED VIEW
AVAILABLE
FOR THIS BOM

Item	Part No.	Name	Qty	L
-	3360332294	HYDRAULIC HOSE, I.D. 20 (0.79 in.), both ends M36 x 2 mm conical seal 24°, length 2,300 mm (90.5 in.)	2	
-	3363085947	HYDRAULIC HOSE, I.D. 20 (0.79 in.), both ends M36 x 2 mm conical seal 24°, length 2,800 mm (110.2 in.)	2	

Options / accessories Optional equipment



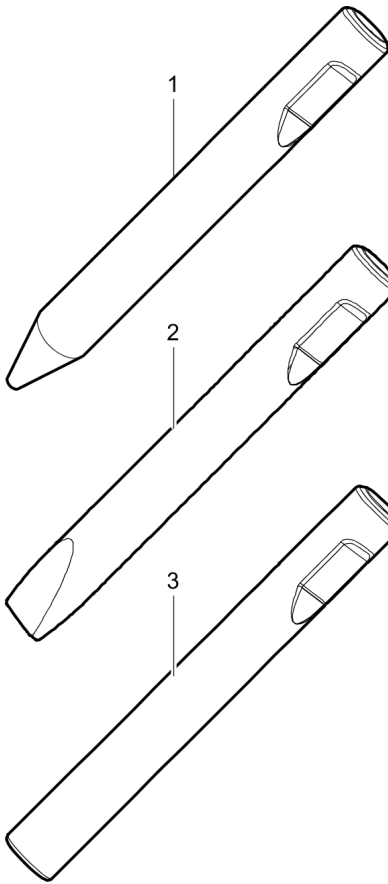
Item	Part No.	Name	Qty	L
900	3363122356	BIO CHISEL PASTE CARTRIDGE, 12 x 550 g (1.2 lbs)	1	
900	3363091200	CHISEL PASTE CARTRIDGE, 12 x 500 g (1.1 lbs)	1	
901	3363034567	GREASE PUMP	1	
902	3363491004	CHARGING BOX with nitrogen cylinder, 2 l, 0.43 gal (0.53 US gal)	1	
903	3363117786	CHARGING BOX without nitrogen cylinder	1	
904	3362235293	TEST GAUGE LOWER WEAR BUSH	1	
905	3363094952	INSIDE CALLIPERS UPPER WEAR BUSH	1	
906		ADAPTER PLATE matching the carrier. Consult the authorized Customer Center/Dealer in your area.	1	
907	3363099797	BASE PLATE WITH THREADED INSERTS	1	
908	3363094537	BOLT KIT	1	
909	3363100695	BASE PLATE WITH THROUGH BORINGS	1	
910	3363094574	BOLT KIT	1	
911	3360209253	ALLEN KEY (19 mm)	1	
912	3363117805	AUTOMATIC LUBRICATION SYSTEM KIT	1	A
913	3315442500	HATCON KIT 1 (3G)	1	B
913	3315442520	HATCON KIT 1 (LTE)	1	B
914	3315439105	SECURITY BIT HATCON	1	
915	3315439106	MAGNET HATCON	1	

Comments for Page: Optional equipment

A | ContiLube® II

B | with item 914 and 915

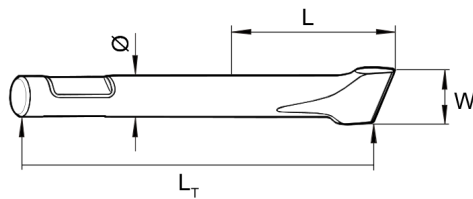
Options / accessories Working tools



Ø=100 mm, L=520 mm, L_T=920 mm, Wt=50.2 kg
Ø=3.94 inch, L=21 inch, L_T=36.22, Wt=110.7 lb

Ø=100 mm, W=100 mm, L=520 mm, L_T=920 mm, Wt=52.6 kg
Ø=3.94 inch, W=3.94 inch, L=21 inch, L_T=36.22, Wt=116.0 lb

Ø=100 mm, L=520 mm, L_T=920 mm, Wt=55.0 kg
Ø=3.94 inch, L=21 inch, L_T=36.22, Wt=121.3 lb



Item	Part No.	Name	Qty	L
1	3363120144	MOIL POINT	1	
2	3363120142	CHISEL (cross)	1	
3	3363120143	BLUNT TOOL	1	

Any unauthorized use or copying of the contents or any part thereof is prohibited.
This applies in particular to trademarks, model denominations, part numbers, and drawings.