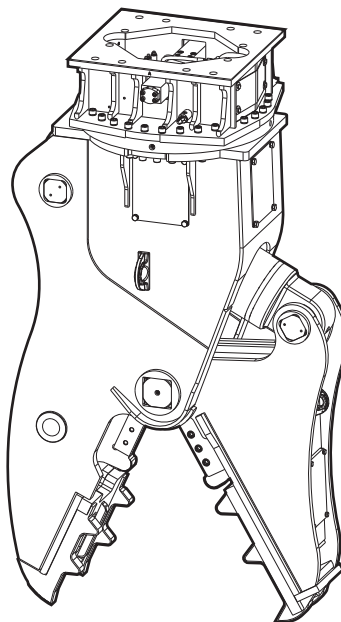


DP 3220

Spare parts list Demolition pulverizer

DP 3220 s/n DGR250026 -



General information

This spare parts list applies to the following:

Part number	Description
3363128000	Demolition pulverizer DP 3220
3363127993	Demolition pulverizer DP 3220 with HATCON (LTE)

Use only authorized parts. Any damage or malfunction caused by the use of unauthorized parts is not covered by Warranty or Product Liability. Any unauthorized use or copying of the contents or any part thereof is prohibited. This applies in particular to trademarks, model denominations, part numbers, and drawings.

Instructions for use

This spare parts list contains no safety regulations and is merely intended to assist in the ordering of spare parts.

For information about operating, servicing, or repairing, the relevant Safety and operating instructions must be consulted at all costs.

Please observe the safety instructions listed in the relevant Safety and operating instructions!

Instructions for ordering

It is essential to indicate the serial number of the hydraulic attachment when ordering spare parts!

Please note the full identification number of your hydraulic attachment.

Determine the quantity of individual parts which are required and need to be ordered. The order must indicate the following details:

- full identification code of the hydraulic attachment
- required quantity
- part number
- description

Service, repair and wear part kits

Kit list

1

Mechanical

Demolition pulverizer DP 3220

Pulverizer jaw DP 3220

Hydraulic cylinder DP 3220

Upper part complete

Rotary transmission

HATCON

Tightening torques DP 3220

Dimensions DP 3220

4

8

11

13

16

19

21

23

Options / accessories

Hydraulic hoses

Optional equipment

24

27

Service, repair and wear part kits Kit list

NO EXPLODED VIEW
AVAILABLE
FOR THIS BOM

Item	Part No.	Name	Qty	L
KIT	3363129249	LABLE KIT	1	
KIT	3363128880	CUTTER BLADES KIT	1	
24	3363118317	CUTTER BLADE	1	
25	3363035107	LOCK RING	3	
26	3362328057	ALLEN SCREW	3	
27	3361850748	PAIR OF LOCK WASHERS	3	
90	3363118319	SHIM	1	
91	3363118318	SHIM	1	
106	3363118317	CUTTER BLADE	1	
113	3363035107	LOCK RING	3	
115	3361850748	PAIR OF LOCK WASHERS	2	
116	3362328057	ALLEN SCREW	3	
190	3363118319	SHIM	1	
191	3363118318	SHIM	1	
KIT	3363129257	TOOTH PLATE KIT (Housing)	1	
3		TOOTH PLATE	1	
5	3360438210	HEXAGON HEAD BOLT	4	
6	3361850747	PAIR OF LOCK WASHERS	4	
7	3363086441	LOCK PIN	2	
KIT	3363129251	TOOTH PLATE KIT (Pulverizer jaw)	1	
102		TOOTH PLATE	1	
107	3361850747	PAIR OF LOCK WASHERS	6	
108	3360438210	HEXAGON HEAD BOLT	6	
109	3363086441	LOCK PIN	2	
KIT	3363129252	SEAL KIT (Hydraulic cylinder)	1	
241		GUIDE RING	3	
242		SEAL	1	
243		BACK-UP RING	2	
244		O-RING	1	
245		O-RING	1	
246		BACK-UP RING	2	
247		O-RING	1	
248		BACK-UP RING	1	
249		GUIDE RING	3	
250		SEAL	1	
251		WIPER	1	
KIT	3363126309	SEAL KIT (Hydraulic motor and housing)	1	

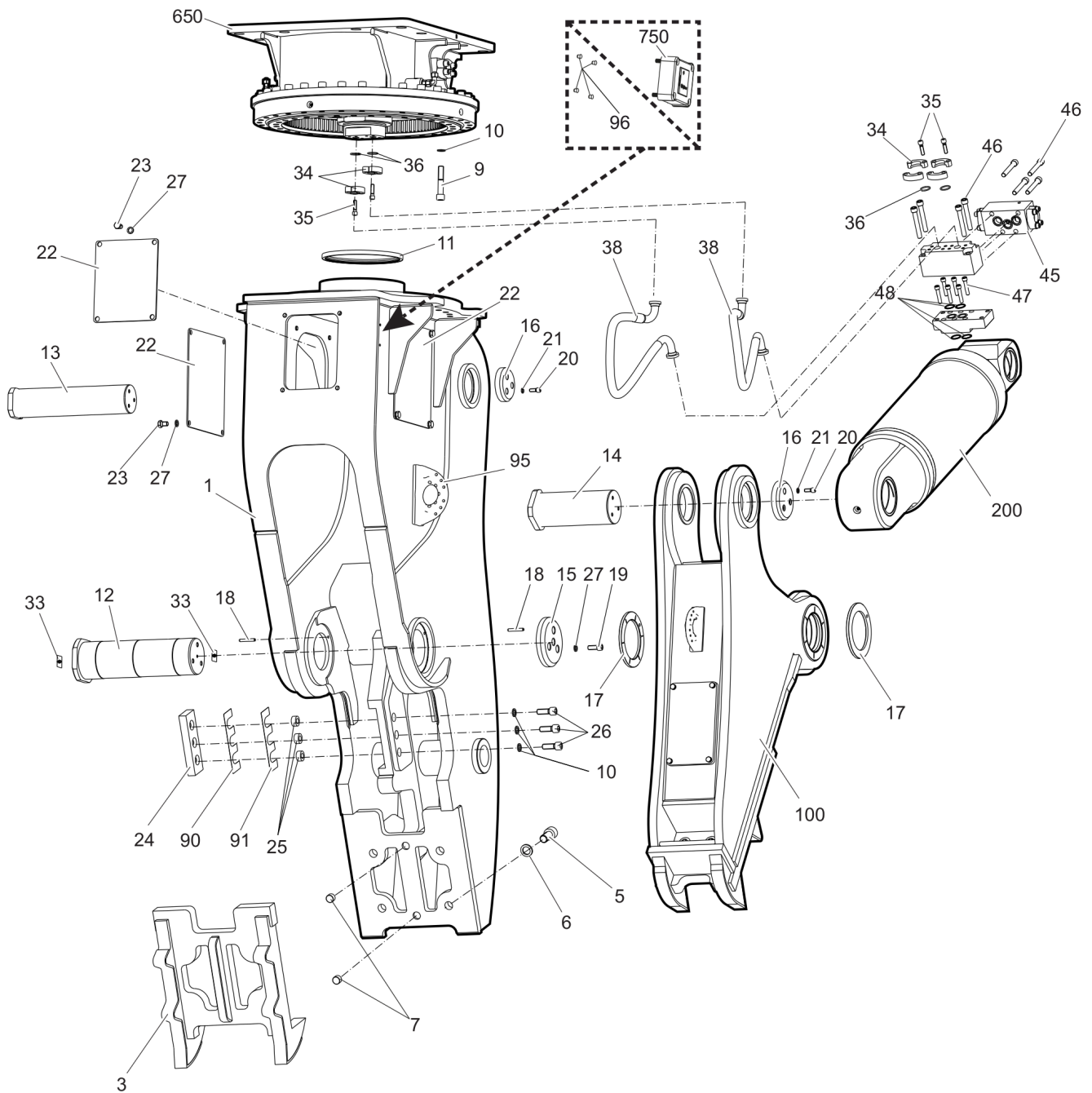
Refer to the DocMine web page for most up-to-date information. The printed information might be outdated.

Tue Mar 11 07:58:00 UTC 2025

Item	Part No.	Name	Qty	L
KIT	3363127334	SEAL KIT (Rapid movement valve)	1	

This page intentionally left blank

Mechanical Demolition pulverizer DP 3220



Refer to the DocMine web page for most up-to-date information. The printed information might be outdated.

Tue Mar 11 07:58:01 UTC 2025

Item	Part No.	Name	Qty	L
1	3363128001	HOUSING	1	A
3		TOOTH PLATE	1	
5	3360438210	HEXAGON HEAD BOLT	4	
6	3361850747	PAIR OF LOCK WASHERS	4	
7	3363086441	LOCK PIN	2	
9	3360106100	ALLEN SCREW	24	
10	3361850748	PAIR OF LOCK WASHERS	27	
11	3363070083	SEAL	1	
12	3363128006	BOLT	1	
13	3363128005	BOLT	1	
14	3363128045	BOLT	2	
15	3363129074	CAP	1	
16	3363120451	CAP	2	
17	3363120660	WEAR RING	2	
18	3363098104	SPRING DOWEL SLEEVE	2	
19	3360106079	ALLEN SCREW	3	
20	3360103751	ALLEN SCREW	6	
21	3361850596	PAIR OF LOCK WASHERS	6	
22	3363082455	PLATE	3	
23	3360105141	HEXAGON HEAD BOLT	12	
24	3363118317	CUTTER BLADE	1	
25	3363035107	LOCK RING	3	
26	3362328057	ALLEN SCREW	3	
27	3361333703	PAIR OF LOCK WASHERS	15	
33	3360209834	GREASE NIPPLE	2	
34	3361853208	FLANGE HALF	8	
35	3360026513	ALLEN SCREW	16	
36	3360314370	O-RING	4	
38	3363129076	HYDRAULIC HOSE	2	
45	3363127125	RAPID MOVEMENT VALVE	1	
46	3363127136	ALLEN SCREW	8	
47	3363127128	ALLEN SCREW	6	
48	3360314370	O-RING	4	
90	3363118319	SHIM	1	B
91	3363118318	SHIM	1	C
95	3363111995	LIFTING EYE	2	D
96	3315439145	PROTECTIVE PLUG HATCON	4	E

Refer to the DocMine web page for most up-to-date information. The printed information might be outdated.

Tue Mar 11 07:58:01 UTC 2025

Item	Part No.	Name	Qty	L
100	3363128002	PULVERIZER JAW complete	1	F
200	3363128004	HYDRAULIC CYLINDER complete	1	F
650	3363120351	UPPER PART, complete	1	F
750		HATCON	1	G

Comments for Page: Demolition pulverizer DP 3220

(L)OCAL REMARKS

A | with item 95

B | 1.0 mm (0.04 in.) thick, as required

C | 0.2 mm (0.01 in.) thick, as required

D | professional welding process necessary

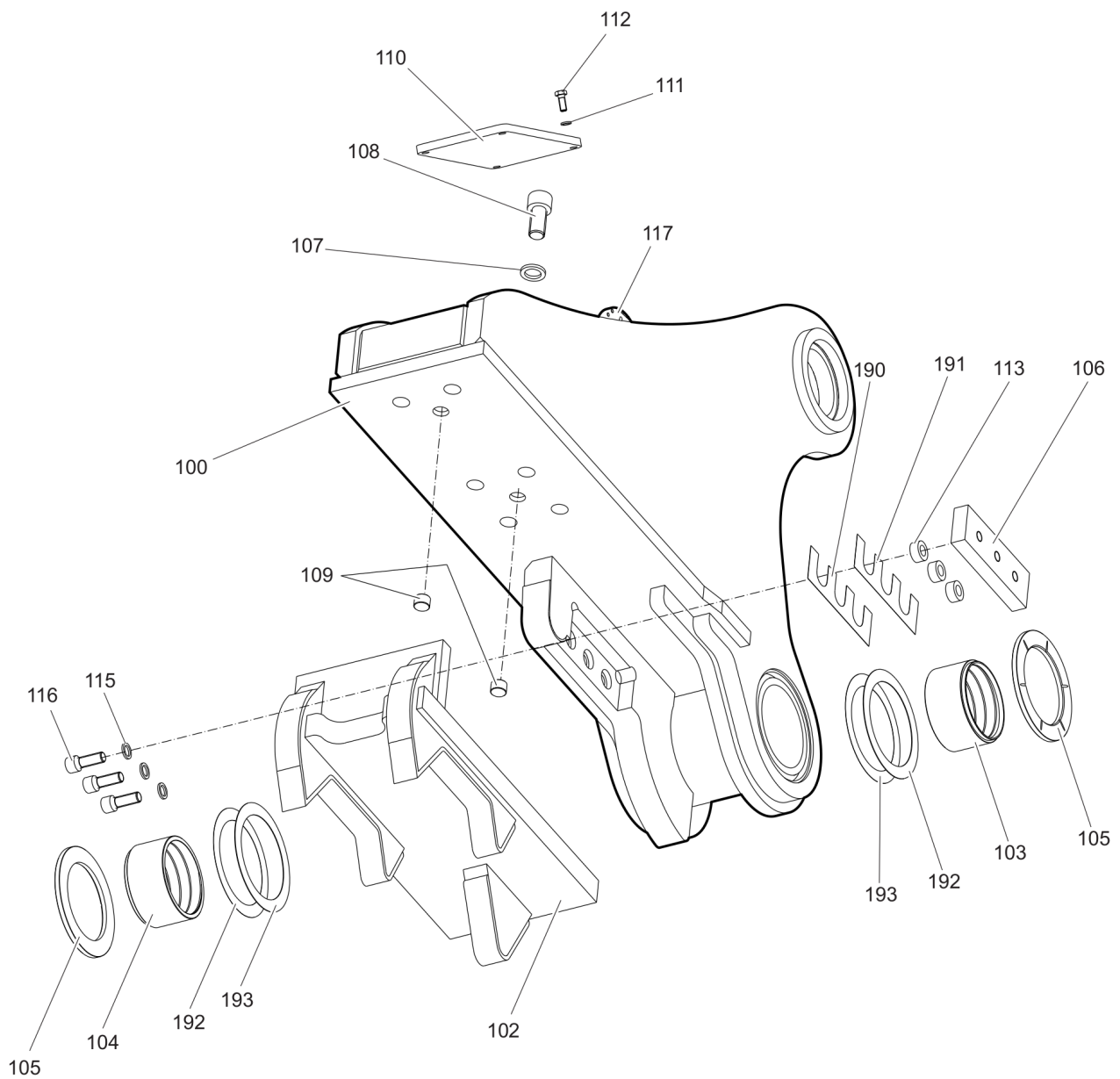
E | only for hydraulic pulverizers without HATCON

F | see separate chapter

G | only for hydraulic pulverizers with HATCON / see separate chapter

This page intentionally left blank

Mechanical Pulverizer jaw DP 3220



Item	Part No.	Name	Qty	L
100	3363128002	PULVERIZER JAW complete	1	A
102		TOOTH PLATE	1	
103	3363120661	BEARING BUSH	1	
104	3363120659	BEARING BUSH	1	
105	3363120660	WEAR RING	2	
106	3363118317	CUTTER BLADE	1	
107	3361850747	PAIR OF LOCK WASHERS	6	
108	3360438210	HEXAGON HEAD BOLT	6	
109	3363086441	LOCK PIN	2	
110	3363128427	COVER PLATE	1	
111	3361850596	PAIR OF LOCK WASHERS	4	
112	3360433383	HEXAGON HEAD BOLT	4	
113	3363035107	LOCK RING	3	
115	3361850748	PAIR OF LOCK WASHERS	3	
116	3362328057	ALLEN SCREW	3	
117	3363111994	LIFTING EYE	1	B
190	3363118319	SHIM	1	C
191	3363118318	SHIM	1	D
192	3363121160	SPACER RING	1	D
193	3363121159	SPACER RING	1	E

Comments for Page: Pulverizer jaw DP 3220

(L)OCAL REMARKS

A | with parts item 102 to 117

B | professional welding process necessary

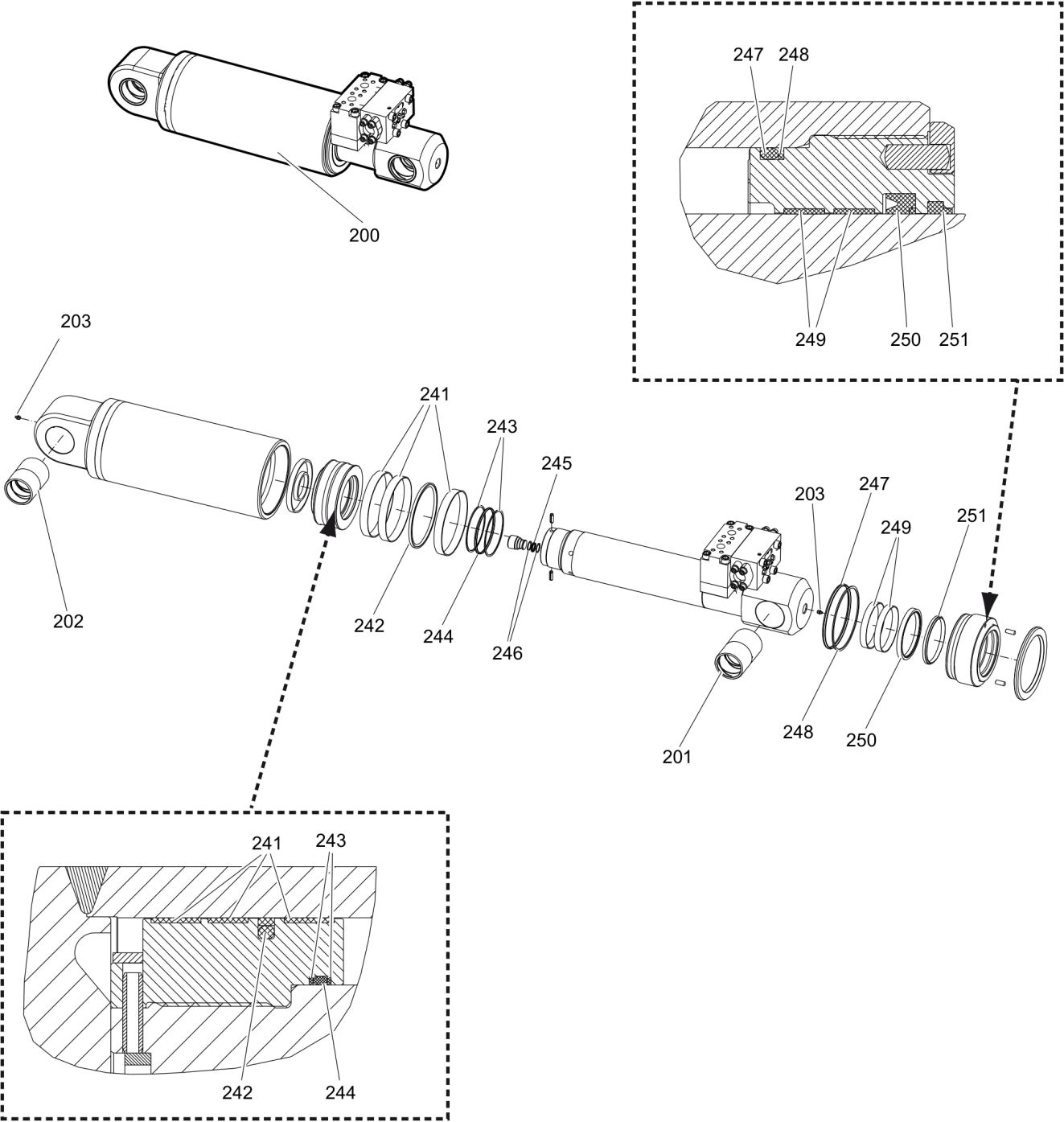
C | 0.5 mm (0.02 in.) thick, as required

D | 0.2 mm (0.01 in.) thick, as required

E | 1.0 mm (0.04 in.) thick, as required

Mechanical Hydraulic cylinder DP 3220

240										
241	242	243	244	245	246	247	248	249	250	251

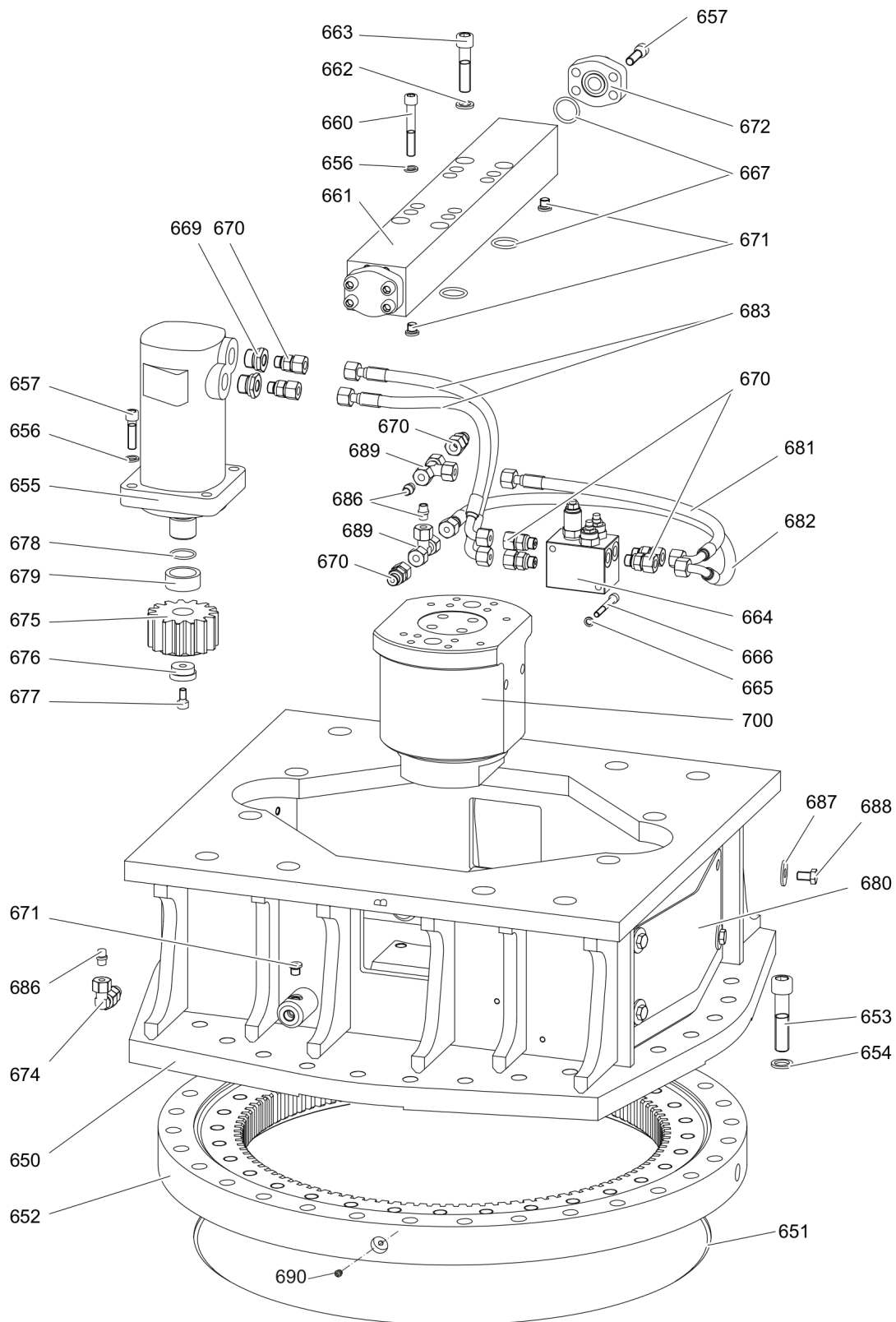


Item	Part No.	Name	Qty	L
200	3363128004	HYDRAULIC CYLINDER complete	1	A
201	3363129100	BEARING BUSH	1	
202	3363129106	BEARING BUSH	1	
203	3363127141	GREASE NIPPLE	2	
240 (24-251)	3363129252	SEAL KIT (Hydraulic cylinder)	1	
241		GUIDE RING	3	
242		SEAL	1	
243		BACK-UP RING	2	
244		O-RING	1	
245		O-RING	1	
246		BACK-UP RING	2	
247		O-RING	1	
248		BACK-UP RING	1	
249		GUIDE RING	3	
250		SEAL	1	
251		WIPER	1	

Comments for Page: Hydraulic cylinder DP 3220

A | with parts item 201 - 251

Mechanical Upper part complete



Refer to the DocMine web page for most up-to-date information. The printed information might be outdated.

Tue Mar 11 07:58:03 UTC 2025

Item	Part No.	Name	Qty	L
650	3363104175	UPPER PART, complete	1	A
651	3363129329	SEAL	1	
652	3363070082	FOUR POINT BEARING	1	
653	3360106099	ALLEN SCREW	28	
654	3361850748	PAIR OF LOCK WASHERS	28	
655	3363098967	HYDRAULIC MOTOR	1	
656	3361850596	PAIR OF LOCK WASHERS	12	
657	3360026513	ALLEN SCREW	12	
660	3363034429	ALLEN SCREW	8	
661	3363104173	CONNECTION PLATE	1	
662	3361333703	PAIR OF LOCK WASHERS	4	
663	3360026646	ALLEN SCREW	4	
664	3362266712	VALVE BLOCK	1	
665	3361850743	PAIR OF LOCK WASHERS	2	
666	3360103738	ALLEN SCREW	2	
667	3360314370	O-RING	4	
669	3362267435	FITTING	2	
670	3360478333	FITTING	8	
671	3360478439	THREADED PLUG	4	
672	3363034040	BLIND FLANGE	2	
674	3363091912	FITTING	2	
675	3362260807	SPUR PINION	1	
676	3363088327	RING	1	
677	3361031981	ALLEN SCREW	1	
678	3360313304	O-RING	1	
679	3362265869	RING	1	
680	3363104171	COVER SHEET	2	
681	3363083970	HYDRAULIC HOSE	1	
682	3363085884	HYDRAULIC HOSE	1	
683	3363085885	HYDRAULIC HOSE	2	
686	3360314593	PLUG	4	
687	3362328082	WASHER	8	
688	3360433381	HEXAGON HEAD BOLT	8	
689	3360314543	FITTING	2	
690	3360209834	GREASE NIPPLE	4	
700	3363033685	ROTARY TRANSMISSION	1	B

Comments for Page: Upper part complete

Refer to the DocMine web page for most up-to-date information. The printed information might be outdated.

Tue Mar 11 07:58:03 UTC 2025

(L)OCAL REMARKS

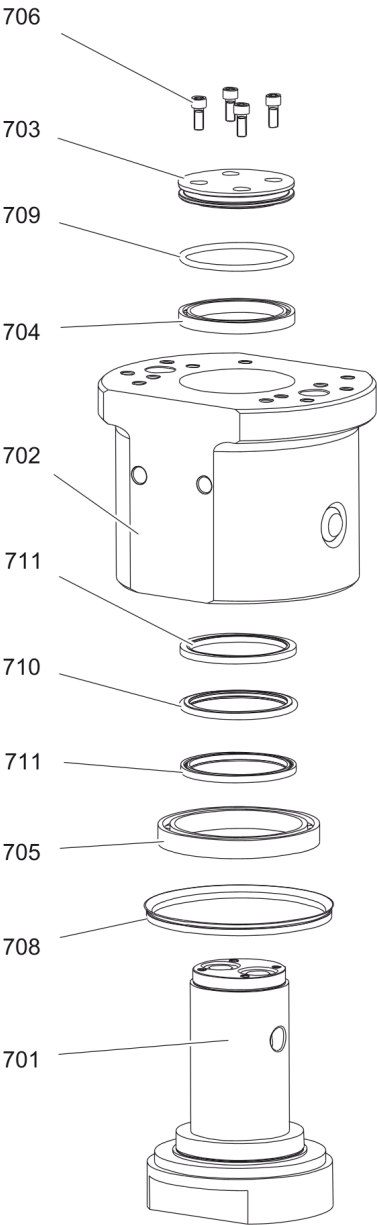
A | with item 652 - 700

B | see separate chapter

This page intentionally left blank

Mechanical Rotary transmission

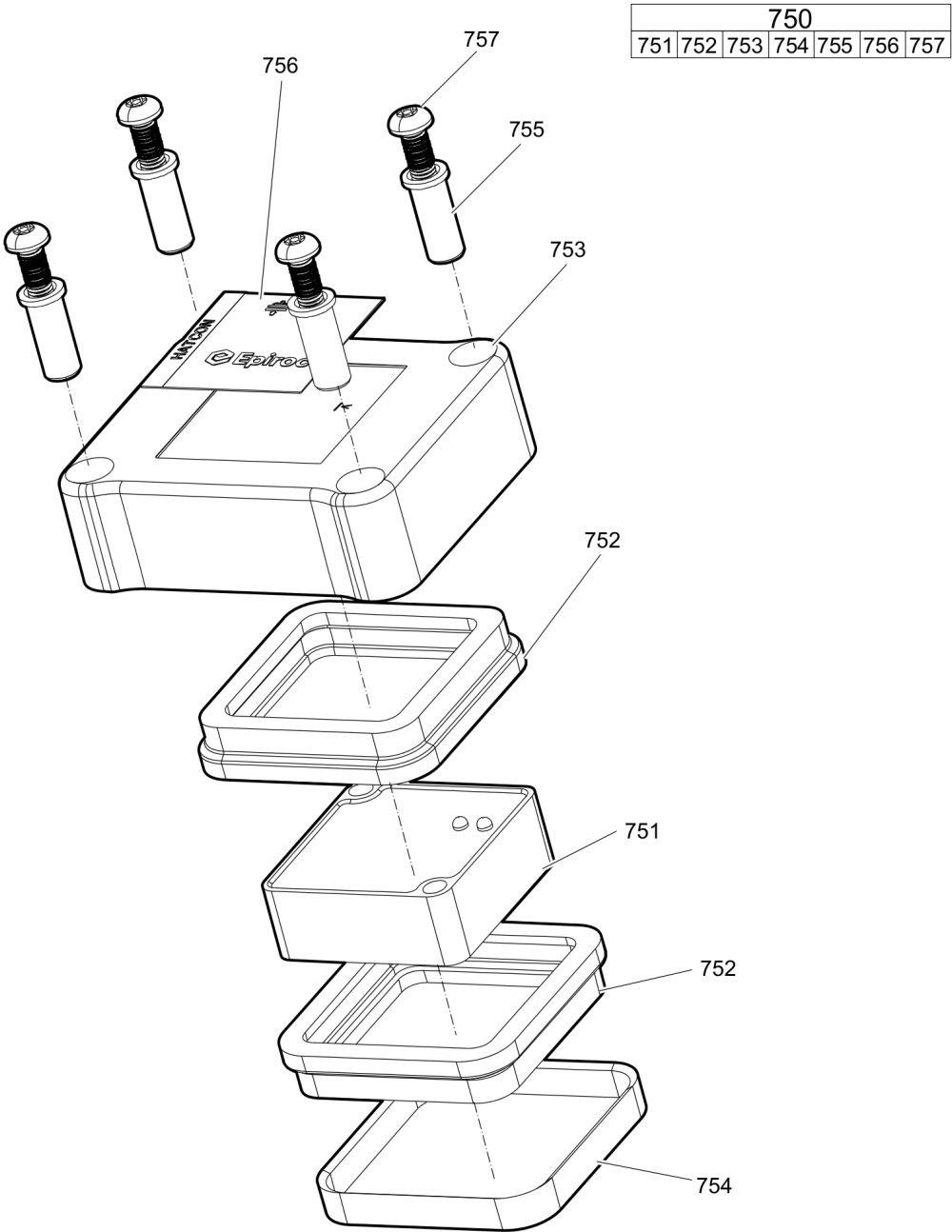
700						
701	702	703	704	705	706	707



707			
708	709	710	711

Item	Part No.	Name	Qty	L
700(701-707)	3363033685	ROTARY TRANSMISSION	1	
701	3363034316	ROTOR	1	
702	3363034317	STATOR	1	
703	3363034318	CAP	1	
704	3363034319	BALL BEARING	1	
705	3363034320	BALL BEARING	1	
706	3363034325	ALLEN SCREW	4	
707(708-711)	3363083066	SEAL KIT (Rotary transmission)	1	
708		V-RING	1	
709		O-RING	1	
710		SLIDE RING	1	
711		SEAL	2	

Mechanical HATCON



Item	Part No.	Name	Qty	L
750(751-757)		HATCON	1	A
751		TRACKING MODULE HATCON	1	
752	3315439130	DAMPER HATCON	2	
753	3315439110	HOUSING TYPE 1 HATCON	1	
754	3315439140	LOCK RING HATCON	1	
755	3315439120	SLEEVE HATCON	4	
756	3315439100	PRODUCT LABEL HATCON	1	
757	3315442600	SCREW HATCON	4	

Comments for Page: HATCON

A | part number see chapter "Optional equipment"

Mechanical Tightening torques DP 3220

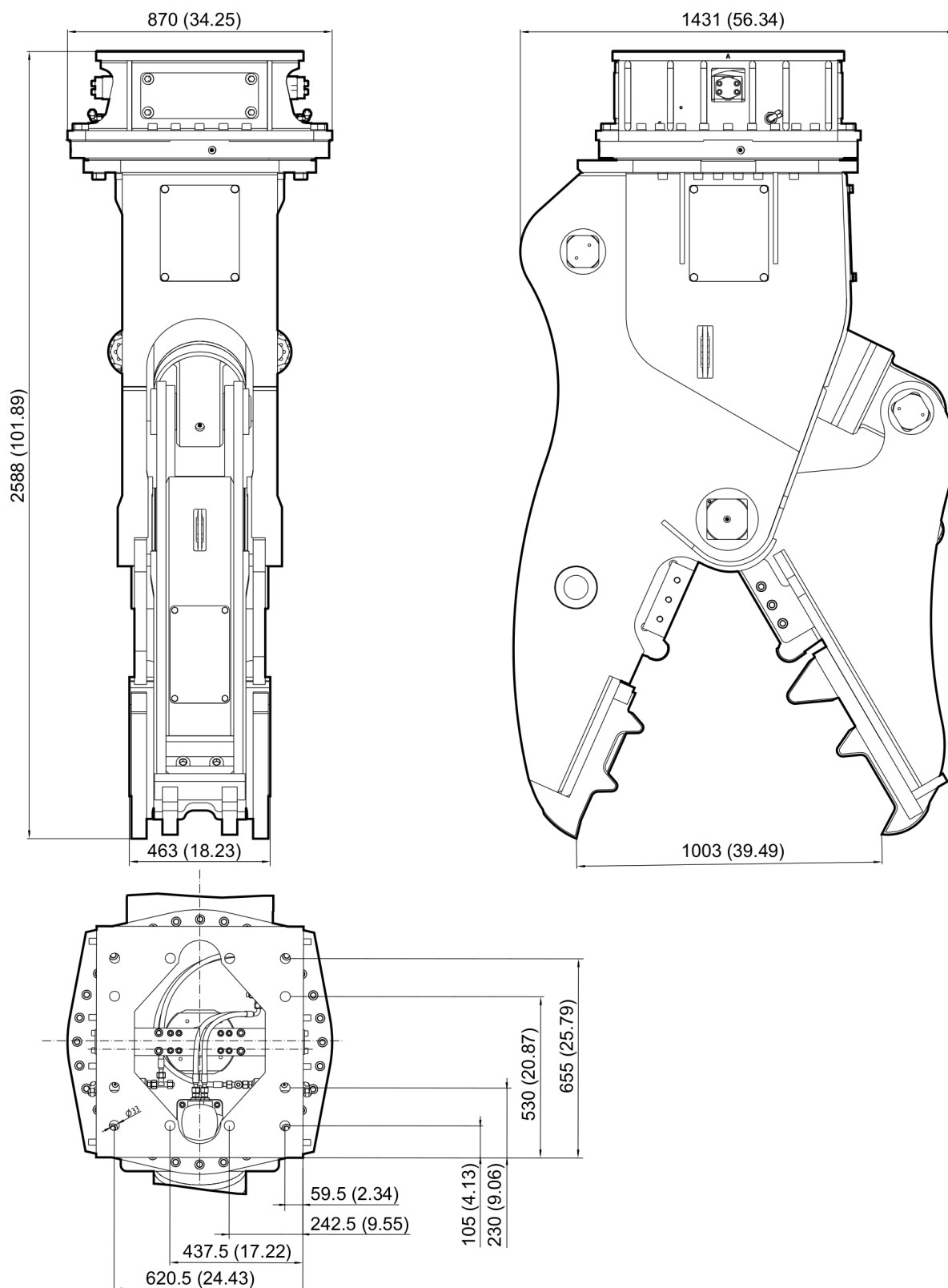
NO EXPLODED VIEW
AVAILABLE
FOR THIS BOM

Item	Part No.	Name	Qty	L
5		ALLEN SCREW - 600 + 30 Nm (443 + 22 ft lbf)	-	
9		ALLEN SCREW - 255 + 30 Nm (188 + 22 ft lbf)	-	
19		ALLEN SCREW - 255 + 30 Nm (188 + 22 ft lbf)	-	
20		HEXAGON HEAD SCREW - 75 + 10 Nm (55 + 7 ft lbf)	-	
23		ALLEN SCREW - 180 + 20 Nm (133 + 15 ft lbf)	-	
26		ALLEN SCREW - 530 + 30 Nm (391 + 22 ft lbf)	-	
108		ALLEN SCREW - 600 + 30 Nm (443 + 22 ft lbf)	-	
112		HEXAGON HEAD SCREW - 75 + 10 Nm (55 + 7 ft lbf)		
116		ALLEN SCREW - 530 + 30 Nm (391 + 22 ft lbf)	-	
653		ALLEN SCREW - 530 + 30 Nm (391 + 22 ft lbf)		
657		ALLEN SCREW - 75 + 10 Nm (55 + 7 ft lbf)	-	
660		ALLEN SCREW - 75 + 10 Nm (55 + 7 ft lbf)	-	
663		ALLEN SCREW - 180 + 20 Nm (133 + 15 ft lbf)	-	
666		ALLEN SCREW - 19 + 5 Nm (14 + 4 ft lbf)	-	
669		FITTING - 150 + 20 Nm (111 + 15 ft lbf)	-	
670		FITTING - 70 + 10 Nm (52 + 7 ft lbf)	-	
671		THREADED PLUG - 25 + 5 Nm (18 + 4 ft lbf)	-	
674		FITTING - 70 + 10 Nm (52 + 7 ft lbf)	-	
677		ALLEN SCREW - 75 + 10 Nm (55 + 7 ft lbf)	-	
706		ALLEN SCREW - 75 Nm (18 ft lbf)	-	A
757		SCREW HATCON - 22 Nm (16 ft lbf)	-	

Comments for Page: Tightening torques DP 3220

A | fix with Loctite 243

Mechanical Dimensions DP 3220



Refer to the DocMine web page for most up-to-date information. The printed information might be outdated.

Tue Mar 11 07:58:06 UTC 2025

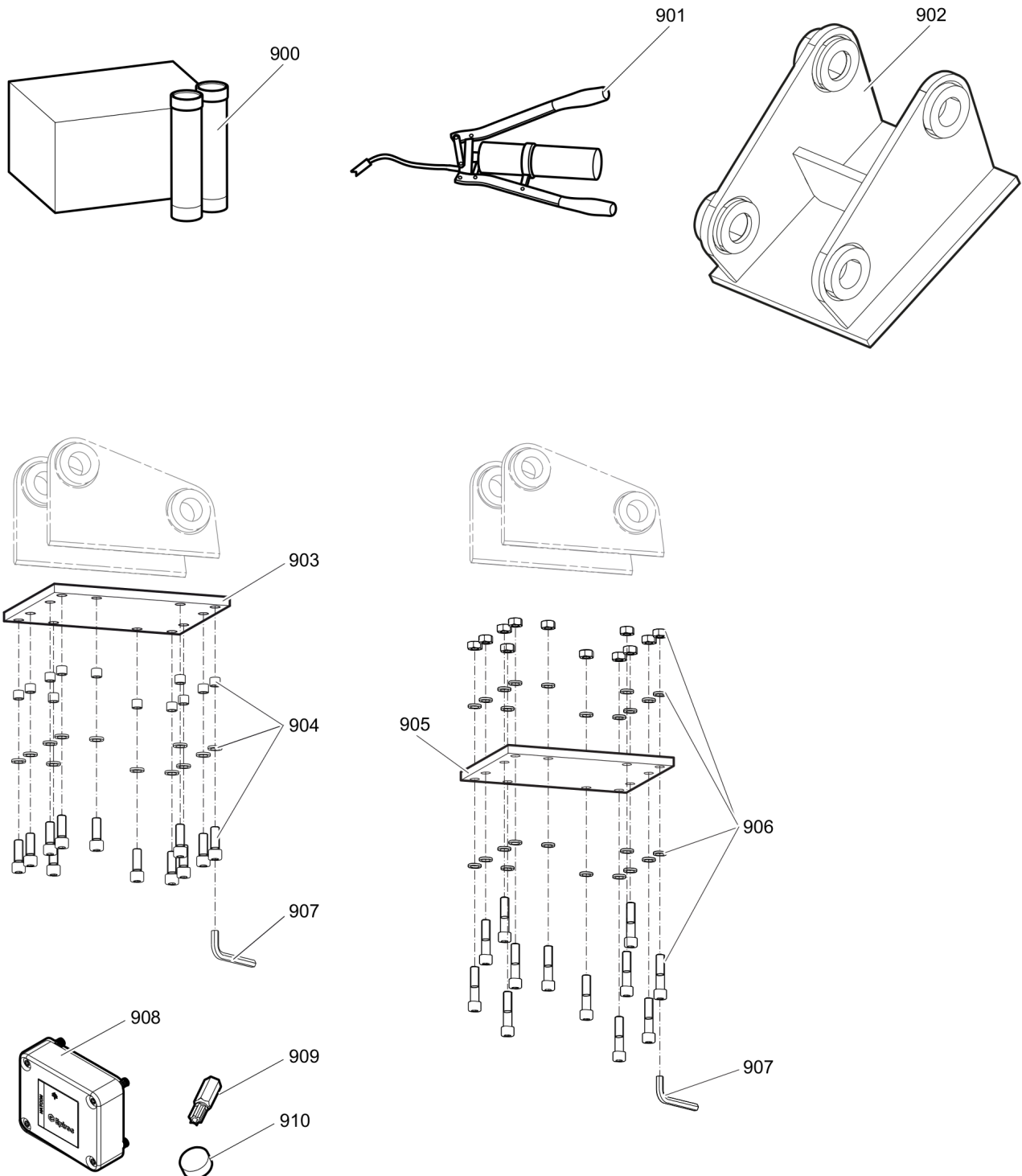
This page intentionally left blank

Options / accessories Hydraulic hoses

NO EXPLODED VIEW
AVAILABLE
FOR THIS BOM

Item	Part No.	Name	Qty	L
-	3363094645	HYDRAULIC HOSE, I.D. 25 (1"), , flange SAE 90° - 6000 PSI / M42 x 2, conical seal 24°, length 2300 mm (91 in.)	2	
-	3363094646	HYDRAULIC HOSE, I.D. 25 (1"), , flange SAE 90° - 6000 PSI / M42 x 2, conical seal 24°, length 2800 mm (110 in.)	2	
-	3363031767	HYDRAULIC HOSE, I.D. 8 (3/8"), both ends M20 x 1.5 conical seal 24°, length 2800 mm (110 in.)	2	
-	3363034399	HYDRAULIC HOSE, I.D. 8 (3/8"), both ends M20 x 1.5 conical seal 24°, length 3500 mm (138 in.)	2	

Options / accessories Optional equipment



Refer to the DocMine web page for most up-to-date information. The printed information might be outdated.

Tue Mar 11 07:58:07 UTC 2025

Item	Part No.	Name	Qty	L
900	3363094914	CUTTER GREASE CARTRIDGE, 12 x 400 g (0.88 lbs)	1	
901	0909107100	LUBRICAT.GUN	1	
902		ADAPTER PLATE matching the carrier. Consult the authorized Customer Center/Dealer in your area.	1	
903	3363099795	BASE PLATE WITH THREADED INSERTS	1	
904	3363087306	BOLT KIT	1	
905	3363100699	BASE PLATE WITH THROUGH BORINGS	1	
906	3363094579	BOLT KIT	1	
907	3360209445	ALLEN KEY (22 mm)	1	
908	3315442520	HATCON KIT 1 (LTE)	1	A
909	3315439105	SECURITY BIT HATCON	1	
910	3315439106	MAGNET HATCON	1	

Comments for Page: Optional equipment

A | with item 909 and 910

Any unauthorized use or copying of the contents or any part thereof is prohibited.
This applies in particular to trademarks, model denominations, part numbers, and drawings.