

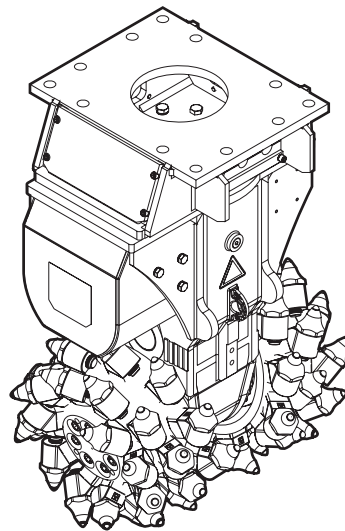
# VC 1400

---

## Spare parts list

### Transverse Drum Cutters

VC 1400 s/n DGR666121 -



# General information

This spare parts list applies to the following:

## Description

VC 1400 - 1  
VC 1400 - 2  
VC 1400 - 3

Use only authorized parts. Any damage or malfunction caused by the use of unauthorized parts is not covered by Warranty or Product Liability. Any unauthorized use or copying of the contents or any part thereof is prohibited. This applies in particular to trademarks, model denominations, part numbers, and drawings.

## Instructions for use

This spare parts list contains no safety regulations and is merely intended to assist in the ordering of spare parts.

For information about operating, servicing, or repairing, the relevant Safety and operating instructions must be consulted at all costs.

Please observe the safety instructions listed in the relevant Safety and operating instructions!

**Service, repair and wear part kits**

|           |   |
|-----------|---|
| Label kit | 1 |
| Kit list  | 3 |

**Mechanical**

|   |    |
|---|----|
| Transverse Drum Cutter, part 1 (Rotatable upper part) | 7  |
| Transverse Drum Cutter, part 1 (Intermediate bracket) | 11 |
| Transverse Drum Cutter, part 2 (Rotatable upper part) | 15 |
| Transverse Drum Cutter, part 2 (Intermediate bracket) | 17 |
| Transverse Drum Cutter, part 3 (Rotatable upper part) | 19 |
| Transverse Drum Cutter, part 3 (Intermediate bracket) | 22 |
| HATCON  | 26 |
| Tightening torques                                    | 29 |
| Dimensions (Rotatable upper part)                     | 31 |
| Dimensions (Intermediate bracket)                     | 32 |

**Options / accessories**

|                          |    |
|--------------------------|----|
| Picks and retainers kits | 34 |
| Tools for picks          | 39 |
| Optional equipment       | 41 |

Service, repair and wear part kits Label kit

NO EXPLODED VIEW  
AVAILABLE  
FOR THIS BOM

| Item | Part No.   | Name      | Qty | L |
|------|------------|-----------|-----|---|
| KIT  | 3311006212 | Label kit | 1   |   |

Service, repair and wear part kits Kit list

NO EXPLODED VIEW  
AVAILABLE  
FOR THIS BOM

| Item | Part No.   | Name                         | Qty | L |
|------|------------|------------------------------|-----|---|
| KIT  | 3311006226 | Adjustment cover kit         | 1   |   |
| 48   |            | Cover                        | 1   |   |
| 57   | 3311000727 | Allen screw                  | 16  |   |
| 59   | 3311004460 | O-ring                       | 1   |   |
| KIT  | 3311006227 | Seal kit drive shaft         | 1   |   |
| 22   | 3311000670 | Allen screw                  | 15  |   |
| 60   | 3311000715 | O-ring                       | 1   |   |
| 63   | 3311000650 | Seal                         | 1   |   |
| 90   | 3311000558 | O-ring                       | 1   |   |
| 91   | 3311002372 | O-ring                       | 2   |   |
| KIT  | 3311006228 | Drive shaft compl.           | 1   |   |
| 22   | 3311000670 | Allen screw                  | 15  |   |
| 45   |            | Drive shaft                  | 1   |   |
| 49   | 3311006032 | Flange (motor)               | 1   |   |
| 50   | 3311006033 | Distance sleeve              | 2   |   |
| 57   | 3311000727 | Allen screw                  | 16  |   |
| 59   | 3311004460 | O-ring                       | 1   |   |
| 60   | 3311000715 | O-ring                       | 1   |   |
| 63   | 3311000650 | Seal                         | 1   |   |
| KIT  | 3311001557 | Motor complete               | 1   | A |
| 79   |            | Cover (motor)                | 1   |   |
| 81   |            | Distribution housing (motor) | 1   |   |
| 82   | 3311001336 | Cam ring                     | 1   | A |
| 85   |            | Cylinder block               | 1   |   |
| 87   | 3311000524 | Hexagon head screw           | 5   |   |
| 88   | 3311000580 | Allen screw                  | 12  |   |
| 90   | 3311000558 | O-ring                       | 1   |   |
| 91   | 3311002372 | O-ring                       | 2   |   |
| KIT  | 3311001534 | Motor complete               | 1   | B |
| 79   |            | Cover (motor)                | 1   |   |
| 81   |            | Distribution housing (motor) | 1   |   |
| 82   | 3311002389 | Cam ring                     | 1   | B |
| 85   |            | Cylinder block               | 1   |   |
| 87   | 3311000524 | Hexagon head screw           | 5   |   |
| 88   | 3311000580 | Allen screw                  | 12  |   |
| 90   | 3311000558 | O-ring                       | 1   |   |
| 91   | 3311002372 | O-ring                       | 2   |   |

Refer to the DocMine web page for most up-to-date information. The printed information might be outdated.

Thu Feb 29 10:41:43 UTC 2024

| Item | Part No.   | Name                         | Qty | L |
|------|------------|------------------------------|-----|---|
| KIT  | 3311001428 | Motor complete               | 1   | C |
| 79   |            | Cover (motor)                | 1   |   |
| 81   |            | Distribution housing (motor) | 1   |   |
| 82   | 3311002390 | Cam ring                     | 1   | C |
| 85   |            | Cylinder block               | 1   |   |
| 87   | 3311000524 | Hexagon head screw           | 5   |   |
| 88   | 3311000580 | Allen screw                  | 12  |   |
| 90   | 3311000558 | O-ring                       | 1   |   |
| 91   | 3311002372 | O-ring                       | 2   |   |
| KIT  | 3311006229 | Overpressure cover compl.    | 1   |   |
| 79   |            | Cover (motor)                | 1   |   |
| 87   | 3311000524 | Hexagon head screw           | 5   |   |
| 90   | 3311000558 | O-ring                       | 1   |   |
| KIT  | 3311006230 | Wear sleeve kit              | 1   |   |
| 36   | 3311000801 | Wear sleeve                  | 54  |   |
| KIT  | 3311006231 | Output unit cpl.             | 1   |   |
| 10   |            | Output shaft                 | 1   |   |
| 11   | 3311005891 | Bushing                      | 7   |   |
| 12   | 3311006026 | Bevel gear                   | 1   |   |
| 13   |            | Housing (output shaft)       | 1   |   |
| 14   | 3311004279 | Sealing cover                | 1   |   |
| 17   | 3311000756 | Tapered roller bearing       | 1   |   |
| 18   | 3311004273 | Tapered roller bearing       | 1   |   |
| 20   | 3311004280 | Seal                         | 1   |   |
| 21   | 3311006207 | Allen screw                  | 7   |   |
| 23   | 3311000714 | Allen screw                  | 32  |   |
| 24   | 3311000731 | Allen screw                  | 10  |   |
| 25   | 3311000640 | Allen screw                  | 4   |   |
| 26   | 3311000641 | Usit-ring                    | 14  |   |
| KIT  | 3311006232 | Drum fastening kit           | 1   |   |
| 66   | 3311000885 | Washer (drum cutter)         | 14  |   |
| 67   | 3311000884 | Clamping sleeve              | 14  |   |
| 75   | 3311000682 | Allen screw                  | 14  |   |
| 78   | 3311004513 | Set screw                    | 8   |   |
| KIT  | 3311006233 | Seal kit output shaft        | 1   |   |
| 14   | 3311004279 | Sealing cover                | 2   |   |
| 20   | 3311004280 | Seal                         | 2   |   |

Refer to the DocMine web page for most up-to-date information. The printed information might be outdated.

Thu Feb 29 10:41:43 UTC 2024



| Item | Part No.   | Name        | Qty | L |
|------|------------|-------------|-----|---|
| 24   | 3311000731 | Allen screw | 20  |   |
| 25   | 3311000640 | Allen screw | 8   |   |
| 26   | 3311000641 | Usit-ring   | 28  |   |
| 28   | 3311004287 | O-ring      | 2   |   |

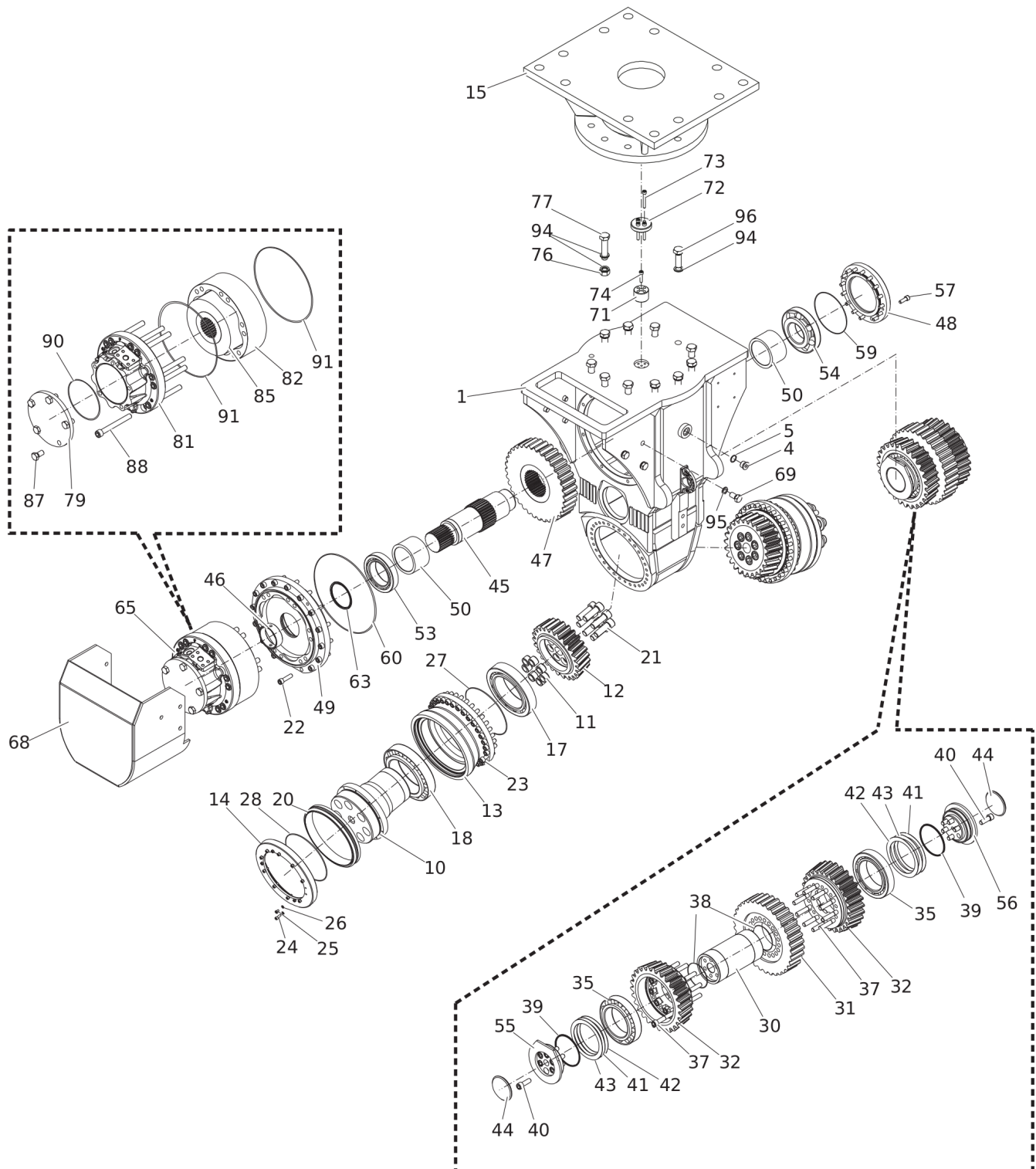
Comments for Page: Kit list

A | VC 1400 - 1

B | VC 1400 - 2

C | VC 1400 - 3

## Mechanical Transverse Drum Cutter, part 1 (Rotatable upper part)



Refer to the DocMine web page for most up-to-date information. The printed information might be outdated.

Thu Feb 29 10:41:45 UTC 2024

| Item | Part No.   | Name                   | Qty | L |
|------|------------|------------------------|-----|---|
| 1    | 3311006063 | Gear housing           | 1   |   |
| 4    | 3311000631 | Plug                   | 2   |   |
| 5    | 3311001071 | Seal                   | 2   |   |
| 10   |            | Output shaft           | 2   | I |
| 11   | 3311005891 | Bushing                | 14  |   |
| 12   | 3311006026 | Bevel gear             | 2   |   |
| 13   |            | Housing (output shaft) | 2   | I |
| 14   | 3311004279 | Sealing cover          | 2   |   |
| 15   | 3311000953 | Rotatable upper part   | 1   |   |
| 17   | 3311000756 | Tapered roller bearing | 2   |   |
| 18   | 3311004273 | Tapered roller bearing | 2   |   |
| 20   | 3311004280 | Seal                   | 2   |   |
| 21   | 3311006207 | Allen screw            | 14  |   |
| 22   | 3311000670 | Allen screw            | 15  |   |
| 23   | 3311000714 | Allen screw            | 64  |   |
| 24   | 3311000731 | Allen screw            | 20  |   |
| 25   | 3311000640 | Allen screw            | 8   |   |
| 26   | 3311000641 | Usit-ring              | 28  |   |
| 27   | 3311000594 | O-ring                 | 2   |   |
| 28   | 3311004287 | O-ring                 | 2   |   |
| 30   | 3311006024 | Idle cogwheel pin      | 1   |   |
| 31   | 3311006025 | Idle cogwheel          | 1   |   |
| 32   | 3311006022 | Bevel gear             | 2   |   |
| 35   | 3311006067 | Tapered roller bearing | 2   |   |
| 37   | 3311006036 | Bolt                   | 20  |   |
| 38   | 3311000760 | O-ring                 | 2   |   |
| 39   | 3311006216 | Seal                   | 2   |   |
| 40   | 3311006217 | Allen screw            | 12  |   |
| 41   | 3311006234 | Spacer                 | 5   |   |
| 42   | 3311006235 | Spacer                 | 5   |   |
| 43   | 3311006236 | Spacer                 | 5   |   |
| 44   | 3311006029 | Cover                  | 2   |   |
| 45   |            | Drive shaft            | 1   | F |
| 46   | 3311001653 | Ring                   | 1   |   |
| 47   | 3311006031 | Spur gear              | 1   |   |
| 48   |            | Cover                  | 1   | E |
| 49   | 3311006032 | Flange (motor)         | 1   |   |

Refer to the DocMine web page for most up-to-date information. The printed information might be outdated.

Thu Feb 29 10:41:45 UTC 2024

| Item | Part No.   | Name                         | Qty | L    |
|------|------------|------------------------------|-----|------|
| 50   | 3311006033 | Distance sleeve              | 2   |      |
| 53   | 3311000646 | Tapered roller bearing       | 1   |      |
| 54   | 3311001429 | Tapered roller bearing       | 1   |      |
| 55   | 3311006027 | Cover (left)                 | 1   |      |
| 56   | 3311006028 | Cover (right)                | 1   |      |
| 57   | 3311000727 | Allen screw                  | 16  |      |
| 59   | 3311004460 | O-ring                       | 1   |      |
| 60   | 3311000715 | O-ring                       | 1   |      |
| 63   | 3311000650 | Seal                         | 1   |      |
| 65   | 3311001557 | Motor complete               | 1   | A, D |
| 65   | 3311001534 | Motor complete               | 1   | B, D |
| 65   | 3311001428 | Motor complete               | 1   | C    |
| 68   | 3311006064 | Cover (motor)                | 1   |      |
| 69   | 3311000524 | Hexagon head screw           | 6   |      |
| 71   | 3311000385 | Centering pin                | 1   |      |
| 72   | 3311000386 | Plate (centering pin)        | 1   |      |
| 73   | 3311000741 | Allen screw                  | 4   |      |
| 74   | 3311000704 | Allen screw                  | 1   |      |
| 76   | 3311000663 | Hexagon head nut             | 6   |      |
| 77   | 3311001596 | Hexagon head screw           | 6   |      |
| 79   |            | Cover (motor)                | 1   | G, H |
| 81   |            | Distribution housing (motor) | 1   | G    |
| 82   | 3311001336 | Cam ring                     | 1   | A    |
| 82   | 3311002389 | Cam ring                     | 1   | B    |
| 82   | 3311002390 | Cam ring                     | 1   | C    |
| 85   |            | Cylinder block               | 1   | G    |
| 87   | 3311000524 | Hexagon head screw           | 5   |      |
| 88   | 3311000580 | Allen screw                  | 12  |      |
| 90   | 3311000558 | O-ring                       | 1   |      |
| 91   | 3311002372 | O-ring                       | 2   |      |
| 94   | 3311000532 | Pair of lock washers         | 16  |      |
| 95   | 3311000533 | Pair of lock washers         | 1   |      |
| 96   | 3311004745 | Hexagon head screw           | 4   |      |

Comments for Page: Transverse Drum Cutter, part 1 (Rotatable upper part)

A | VC 1400 - 1

B | VC 1400 - 2

Refer to the DocMine web page for most up-to-date information. The printed information might be outdated.

Thu Feb 29 10:41:46 UTC 2024

C | VC 1400 - 3

D | with item 79-91

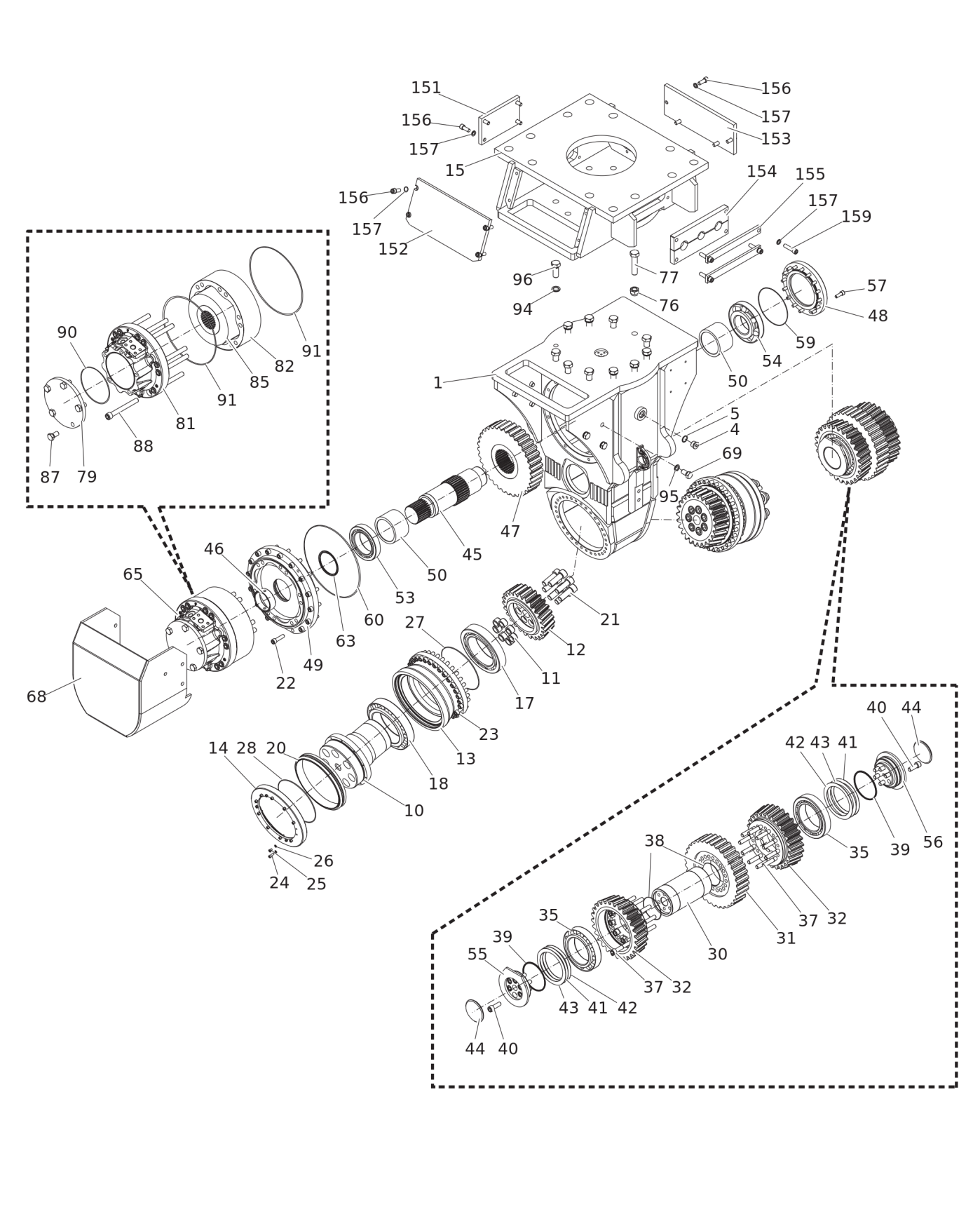
E | see Adjustment cover kit

F | see Drive shaft compl.

G | see Motor complete

H | see Overpressure cover compl.

I | see Output unit cpl.



Refer to the DocMine web page for most up-to-date information. The printed information might be outdated.

Thu Feb 29 10:41:47 UTC 2024

| Item | Part No.   | Name                   | Qty | L |
|------|------------|------------------------|-----|---|
| 1    | 3311006063 | Gear housing           | 1   |   |
| 4    | 3311000631 | Plug                   | 2   |   |
| 5    | 3311001071 | Seal                   | 2   |   |
| 10   |            | Output shaft           | 2   | I |
| 11   | 3311005891 | Bushing                | 14  |   |
| 12   | 3311006026 | Bevel gear             | 2   |   |
| 13   |            | Housing (output shaft) | 2   | I |
| 14   | 3311004279 | Sealing cover          | 2   |   |
| 15   | 3311005672 | Intermediate bracket   | 1   |   |
| 17   | 3311000756 | Tapered roller bearing | 2   |   |
| 18   | 3311004273 | Tapered roller bearing | 2   |   |
| 20   | 3311004280 | Seal                   | 2   |   |
| 21   | 3311006207 | Allen screw            | 14  |   |
| 22   | 3311000670 | Allen screw            | 15  |   |
| 23   | 3311000714 | Allen screw            | 64  |   |
| 24   | 3311000731 | Allen screw            | 20  |   |
| 25   | 3311000640 | Allen screw            | 8   |   |
| 26   | 3311000641 | Usit-ring              | 28  |   |
| 27   | 3311000594 | O-ring                 | 2   |   |
| 28   | 3311004287 | O-ring                 | 2   |   |
| 30   | 3311006024 | Idle cogwheel pin      | 1   |   |
| 31   | 3311006025 | Idle cogwheel          | 1   |   |
| 32   | 3311006022 | Bevel gear             | 2   |   |
| 35   | 3311006067 | Tapered roller bearing | 2   |   |
| 37   | 3311006036 | Bolt                   | 20  |   |
| 38   | 3311000760 | O-ring                 | 2   |   |
| 39   | 3311006216 | Seal                   | 2   |   |
| 40   | 3311006217 | Allen screw            | 12  |   |
| 41   | 3311006234 | Spacer                 | 5   |   |
| 42   | 3311006235 | Spacer                 | 5   |   |
| 43   | 3311006236 | Spacer                 | 5   |   |
| 44   | 3311006029 | Cover                  | 2   |   |
| 45   |            | Drive shaft            | 1   | F |
| 46   | 3311001653 | Ring                   | 1   |   |
| 47   | 3311006031 | Spur gear              | 1   |   |
| 48   |            | Cover                  | 1   | E |
| 49   | 3311006032 | Flange (motor)         | 1   |   |

Refer to the DocMine web page for most up-to-date information. The printed information might be outdated.

Thu Feb 29 10:41:47 UTC 2024

| Item | Part No.   | Name                         | Qty | L       |
|------|------------|------------------------------|-----|---------|
| 50   | 3311006033 | Distance sleeve              | 2   |         |
| 53   | 3311000646 | Tapered roller bearing       | 1   |         |
| 54   | 3311001429 | Tapered roller bearing       | 1   |         |
| 55   | 3311006027 | Cover (left)                 | 1   |         |
| 56   | 3311006028 | Cover (right)                | 1   |         |
| 57   | 3311000727 | Allen screw                  | 16  |         |
| 59   | 3311004460 | O-ring                       | 1   |         |
| 60   | 3311000715 | O-ring                       | 1   |         |
| 63   | 3311000650 | Seal                         | 1   |         |
| 65   | 3311001557 | Motor complete               | 1   | A, D    |
| 65   | 3311001534 | Motor complete               | 1   | B, D    |
| 65   | 3311001428 | Motor complete               | 1   | C       |
| 68   | 3311006064 | Cover (motor)                | 1   |         |
| 69   | 3311000524 | Hexagon head screw           | 6   |         |
| 76   | 3311000663 | Hexagon head nut             | 6   |         |
| 77   | 3311001596 | Hexagon head screw           | 6   |         |
| 79   |            | Cover (motor)                | 1   | G,<br>H |
| 81   |            | Distribution housing (motor) | 1   | G       |
| 82   | 3311001336 | Cam ring                     | 1   | A       |
| 82   | 3311002389 | Cam ring                     | 1   | B       |
| 82   | 3311002390 | Cam ring                     | 1   | C       |
| 85   |            | Cylinder block               | 1   | G       |
| 87   | 3311000524 | Hexagon head screw           | 5   |         |
| 88   | 3311000580 | Allen screw                  | 12  |         |
| 90   | 3311000558 | O-ring                       | 1   |         |
| 91   | 3311002372 | O-ring                       | 2   |         |
| 94   | 3311000532 | Pair of lock washers         | 16  |         |
| 95   | 3311000533 | Pair of lock washers         | 1   |         |
| 96   | 3311004745 | Hexagon head screw           | 4   |         |
| 151  | 3311005858 | Cover                        | 1   |         |
| 152  | 3311005859 | Cover                        | 1   |         |
| 153  | 3311005860 | Cover                        | 1   |         |
| 154  | 3311005861 | Rubber plate                 | 1   |         |
| 155  | 3311005862 | Flat steel                   | 2   |         |
| 156  | 3311000529 | Allen screw                  | 12  |         |
| 157  | 3311000540 | Pair of lock washers         | 12  |         |
| 159  | 3311005904 | Allen screw                  | 4   |         |

Refer to the DocMine web page for most up-to-date information. The printed information might be outdated.

Thu Feb 29 10:41:48 UTC 2024



---

Comments for Page: Transverse Drum Cutter, part 1 (Intermediate bracket)

A | VC 1400 - 1

B | VC 1400 - 2

C | VC 1400 - 3

D | with item 79-91

E | see Adjustment cover kit

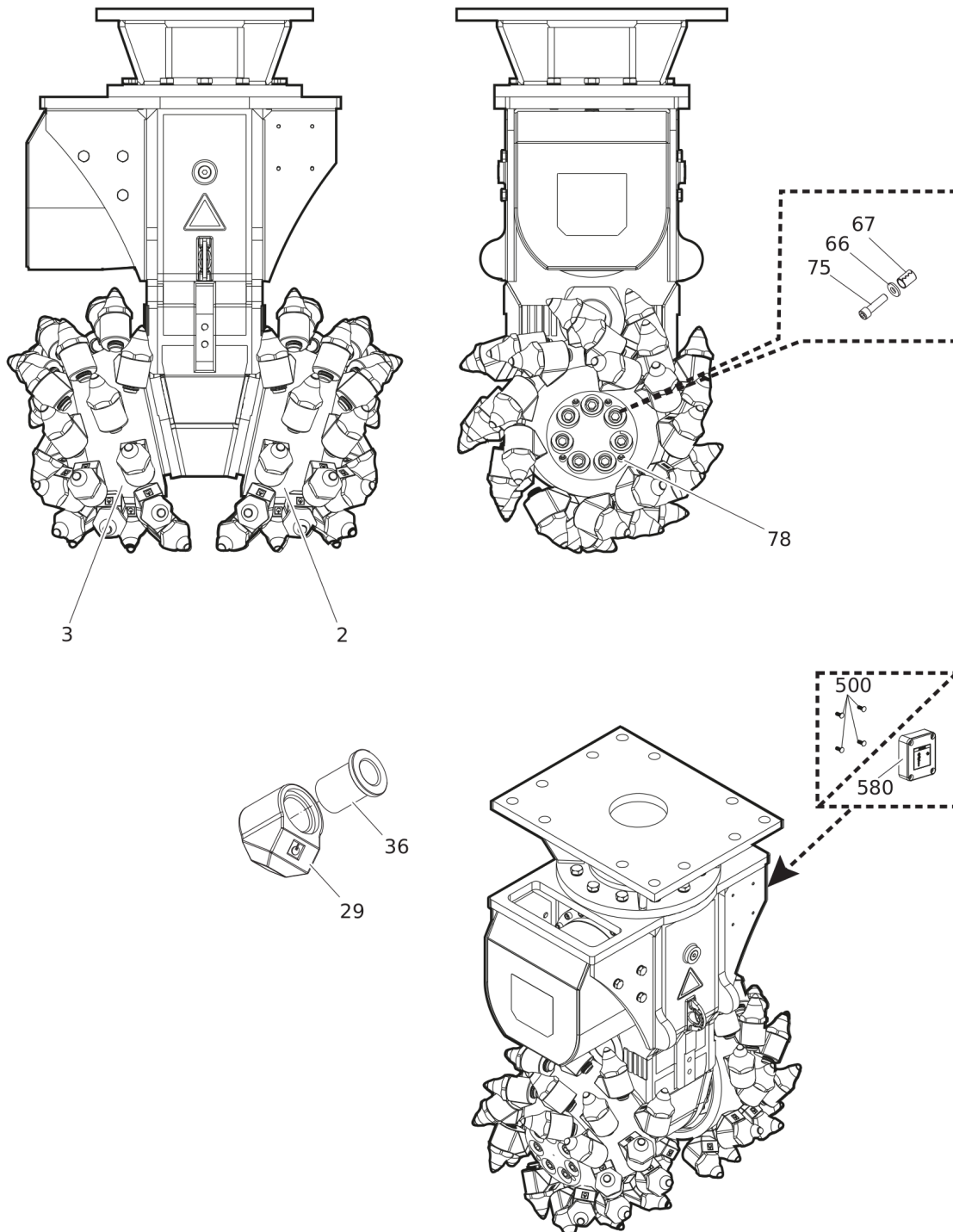
F | see Drive shaft compl.

G | see Motor complete

H | see Overpressure cover compl.

I | see Output unit cpl.

## Mechanical Transverse Drum Cutter, part 2 (Rotatable upper part)



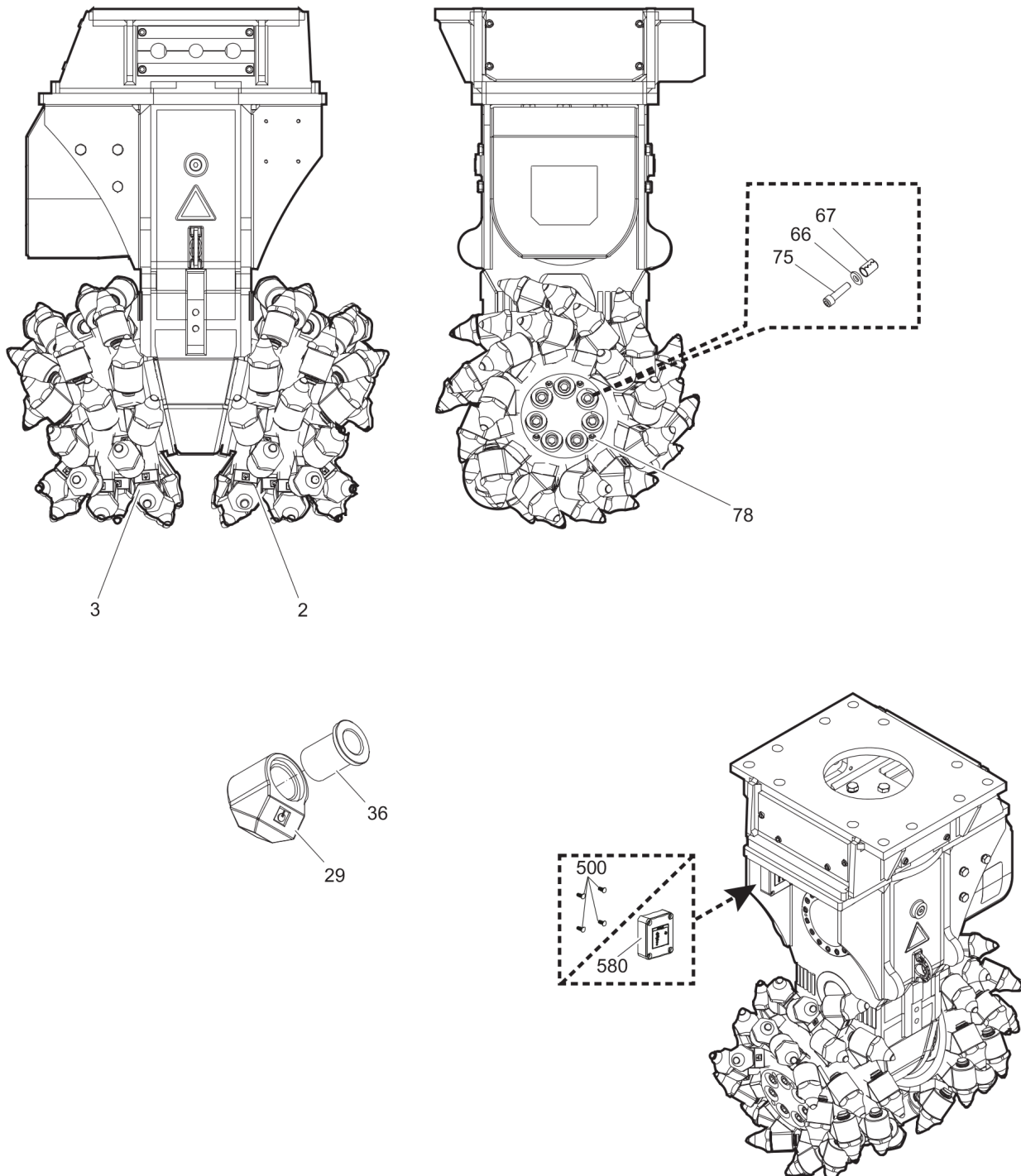
| Item | Part No.   | Name                      | Qty | L |
|------|------------|---------------------------|-----|---|
| 2    | 3311006081 | Cutter drum (left)        | 1   |   |
| 3    | 3311006082 | Cutter drum (right/motor) | 1   |   |
| 29   | 3311004253 | Pick box                  | 54  |   |
| 36   | 3311000801 | Wear sleeve               | 54  |   |
| 66   | 3311000885 | Washer (drum cutter)      | 14  |   |
| 67   | 3311000884 | Clamping sleeve           | 14  |   |
| 75   | 3311000682 | Allen screw               | 14  |   |
| 78   | 3311004513 | Set screw                 | 8   |   |
| 500  | 3315439145 | PROTECTIVE PLUG HATCON    | 4   | A |
| 580  |            | HATCON                    | 1   | B |

Comments for Page: Transverse Drum Cutter, part 2 (Rotatable upper part)

A | only for drum cutters without HATCON

B | only for drum cutters with HATCON / see separate chapter

## Mechanical Transverse Drum Cutter, part 2 (Intermediate bracket)



Refer to the DocMine web page for most up-to-date information. The printed information might be outdated.

Thu Feb 29 10:41:49 UTC 2024

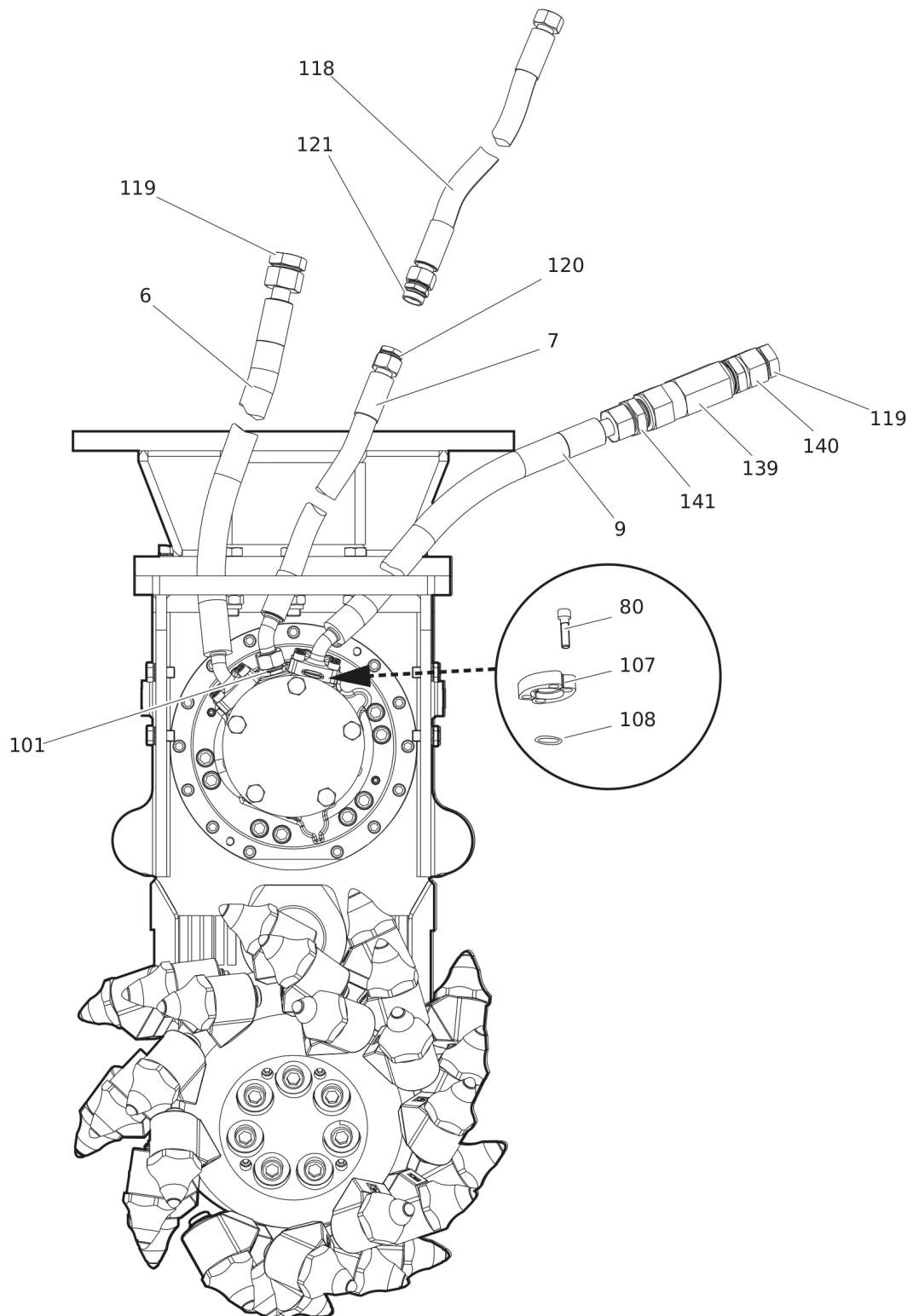
| Item | Part No.   | Name                      | Qty | L |
|------|------------|---------------------------|-----|---|
| 2    | 3311006081 | Cutter drum (left)        | 1   |   |
| 3    | 3311006082 | Cutter drum (right/motor) | 1   |   |
| 29   | 3311004253 | Pick box                  | 54  |   |
| 36   | 3311000801 | Wear sleeve               | 54  |   |
| 66   | 3311000885 | Washer (drum cutter)      | 14  |   |
| 67   | 3311000884 | Clamping sleeve           | 14  |   |
| 75   | 3311000682 | Allen screw               | 14  |   |
| 78   | 3311004513 | Set screw                 | 8   |   |
| 500  | 3315439145 | PROTECTIVE PLUG HATCON    | 4   | A |
| 580  |            | HATCON                    | 1   | B |

Comments for Page: Transverse Drum Cutter, part 2 (Intermediate bracket)

A | only for drum cutters without HATCON

B | only for drum cutters with HATCON / see separate chapter

## Mechanical Transverse Drum Cutter, part 3 (Rotatable upper part)



| Item | Part No.   | Name                              | Qty | L |
|------|------------|-----------------------------------|-----|---|
| KIT  | 3311006344 | Hose kit metric, 2.5 m (Standard) | 1   |   |
| 6    | 3311001540 | Hydraulic hose                    | 1   |   |
| 7    | 3311000244 | Hydraulic hose                    | 1   |   |
| 9    | 3311001540 | Hydraulic hose                    | 1   |   |
| 80   | 3311001805 | Allen screw                       | 8   |   |
| 101  | 3311001538 | Fitting                           | 1   |   |
| 107  | 3311001537 | Flange                            | 2   |   |
| 108  | 3311001361 | O-ring                            | 2   |   |
| 118  | 3311001582 | Hydraulic hose                    | 1   |   |
| 119  | 3311000118 | Plug                              | 2   |   |
| 120  | 3311000119 | Plug                              | 1   |   |
| 121  | 3311000120 | Fitting                           | 1   |   |
| 139  | 3311002965 | Check valve                       | 1   |   |
| 140  | 3311000085 | Fitting                           | 1   |   |
| 141  | 3311000086 | Fitting                           | 1   |   |
| KIT  | 3311006339 | Hose kit JIC, 2.5 m (Optional)    | 1   |   |
| 6    | 3311005618 | Hydraulic hose                    | 1   |   |
| 7    | 3311002208 | Hydraulic hose                    | 1   |   |
| 9    | 3311005618 | Hydraulic hose                    | 1   |   |
| 80   | 3311001805 | Allen screw                       | 8   |   |
| 101  | 3311003082 | Fitting                           | 1   |   |
| 107  | 3311001537 | Flange                            | 2   |   |
| 108  | 3311001361 | O-ring                            | 2   |   |
| 118  | 3311002209 | Hydraulic hose                    | 1   |   |
| 119  | 3311002745 | Plug                              | 2   |   |
| 120  | 3311002747 | Plug                              | 1   |   |
| 121  | 3311002211 | Fitting                           | 1   |   |
| 139  | 3311002965 | Check valve                       | 1   |   |
| 140  | 3311002744 | Fitting                           | 1   |   |
| 141  | 3311003016 | Fitting                           | 1   |   |
| KIT  | 3311006332 | Hose kit BSP, 2.5 m (Optional)    | 1   |   |
| 6    | 3311004859 | Hydraulic hose                    | 1   |   |
| 7    | 3311004656 | Hydraulic hose                    | 1   |   |
| 9    | 3311004859 | Hydraulic hose                    | 1   |   |
| 80   | 3311001805 | Allen screw                       | 8   |   |
| 101  | 3311001538 | Fitting                           | 1   |   |
| 107  | 3311001537 | Flange                            | 2   |   |

Refer to the DocMine web page for most up-to-date information. The printed information might be outdated.

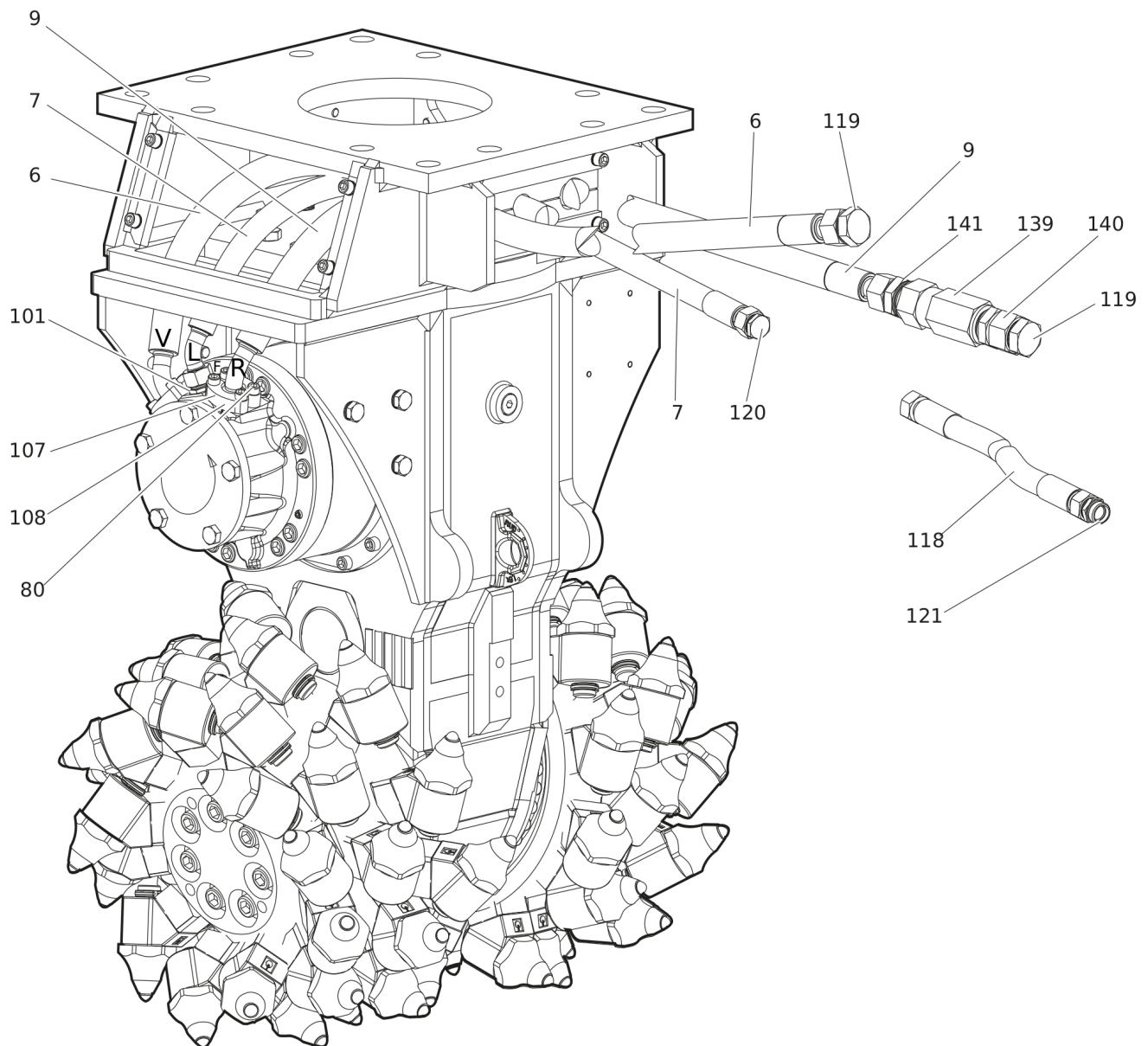
Thu Feb 29 10:41:50 UTC 2024

| Item | Part No.   | Name           | Qty | L |
|------|------------|----------------|-----|---|
| 108  | 3311001361 | O-ring         | 2   |   |
| 118  | 3311004015 | Hydraulic hose | 1   |   |
| 119  | 3311004016 | Plug           | 2   |   |
| 120  | 3311003877 | Plug           | 1   |   |
| 121  | 3311004017 | Fitting        | 1   |   |
| 139  | 3311002965 | Check valve    | 1   |   |
| 140  | 3311004019 | Fitting        | 1   |   |
| 141  | 3311004020 | Fitting        | 1   |   |



This page intentionally left blank

## Mechanical Transverse Drum Cutter, part 3 (Intermediate bracket)



| Item | Part No.   | Name                              | Qty | L |
|------|------------|-----------------------------------|-----|---|
| KIT  | 3311006344 | Hose kit metric, 2.5 m (Standard) | 1   |   |
| 6    | 3311001540 | Hydraulic hose                    | 1   |   |
| 7    | 3311000244 | Hydraulic hose                    | 1   |   |
| 9    | 3311001540 | Hydraulic hose                    | 1   |   |
| 80   | 3311001805 | Allen screw                       | 8   |   |
| 101  | 3311001538 | Fitting                           | 1   |   |
| 107  | 3311001537 | Flange                            | 2   |   |
| 108  | 3311001361 | O-ring                            | 2   |   |
| 118  | 3311001582 | Hydraulic hose                    | 1   |   |
| 119  | 3311000118 | Plug                              | 2   |   |
| 120  | 3311000119 | Plug                              | 1   |   |
| 121  | 3311000120 | Fitting                           | 1   |   |
| 139  | 3311002965 | Check valve                       | 1   |   |
| 140  | 3311000085 | Fitting                           | 1   |   |
| 141  | 3311000086 | Fitting                           | 1   |   |
| KIT  | 3311006339 | Hose kit JIC, 2.5 m (Optional)    | 1   |   |
| 6    | 3311005618 | Hydraulic hose                    | 1   |   |
| 7    | 3311002208 | Hydraulic hose                    | 1   |   |
| 9    | 3311005618 | Hydraulic hose                    | 1   |   |
| 80   | 3311001805 | Allen screw                       | 8   |   |
| 101  | 3311003082 | Fitting                           | 1   |   |
| 107  | 3311001537 | Flange                            | 2   |   |
| 108  | 3311001361 | O-ring                            | 2   |   |
| 118  | 3311002209 | Hydraulic hose                    | 1   |   |
| 119  | 3311002745 | Plug                              | 2   |   |
| 120  | 3311002747 | Plug                              | 1   |   |
| 121  | 3311002211 | Fitting                           | 1   |   |
| 139  | 3311002965 | Check valve                       | 1   |   |
| 140  | 3311002744 | Fitting                           | 1   |   |
| 141  | 3311003016 | Fitting                           | 1   |   |
| KIT  | 3311006332 | Hose kit BSP, 2.5 m (Optional)    | 1   |   |
| 6    | 3311004859 | Hydraulic hose                    | 1   |   |
| 7    | 3311004656 | Hydraulic hose                    | 1   |   |
| 9    | 3311004859 | Hydraulic hose                    | 1   |   |
| 80   | 3311001805 | Allen screw                       | 8   |   |
| 101  | 3311001538 | Fitting                           | 1   |   |
| 107  | 3311001537 | Flange                            | 2   |   |

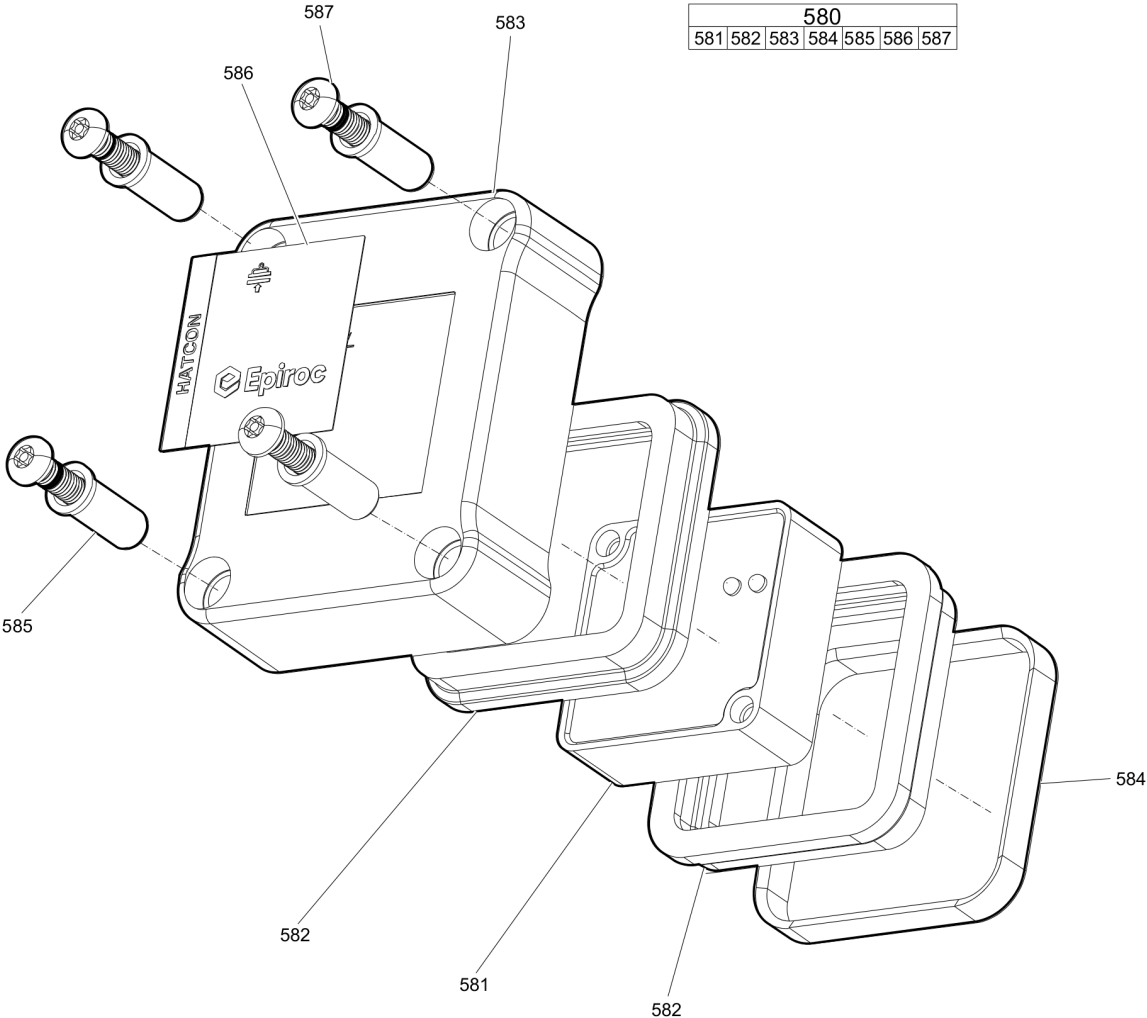
Refer to the DocMine web page for most up-to-date information. The printed information might be outdated.

Thu Feb 29 10:41:50 UTC 2024

| Item | Part No.   | Name           | Qty | L |
|------|------------|----------------|-----|---|
| 108  | 3311001361 | O-ring         | 2   |   |
| 118  | 3311004015 | Hydraulic hose | 1   |   |
| 119  | 3311004016 | Plug           | 2   |   |
| 120  | 3311003877 | Plug           | 1   |   |
| 121  | 3311004017 | Fitting        | 1   |   |
| 139  | 3311002965 | Check valve    | 1   |   |
| 140  | 3311004019 | Fitting        | 1   |   |
| 141  | 3311004020 | Fitting        | 1   |   |

This page intentionally left blank

Mechanical HATCON



| Item         | Part No.   | Name                   | Qty | L |
|--------------|------------|------------------------|-----|---|
| 580(581-587) |            | HATCON                 | 1   | A |
| 581          |            | TRACKING MODULE HATCON | 1   |   |
| 582          | 3315439130 | DAMPER HATCON          | 2   |   |
| 583          | 3315439110 | HOUSING TYPE 1 HATCON  | 1   |   |
| 584          | 3315439140 | LOCK RING HATCON       | 1   |   |
| 585          | 3315439120 | SLEEVE HATCON          | 4   |   |
| 586          | 3315439100 | PRODUCT LABEL HATCON   | 1   |   |
| 587          | 3315442600 | SCREW HATCON           | 4   |   |

Comments for Page: HATCON

A | part number see chapter "Optional equipment"

---

Mechanical Tightening torques

NO EXPLODED VIEW  
AVAILABLE  
FOR THIS BOM



| Item   | Part No. | Name                                     | Qty | L |
|--------|----------|--|-----|---|
| 75     | -        | Allen screw - 560 Nm (413 ft lbf)        | -   | A |
| 76, 96 | -        | Hexagon head screw - 415 Nm (306 ft lbf) | -   | B |
| 587    | -        | SCREW HATCON - 22 Nm (16 ft lbf)         | -   | C |

Comments for Page: Tightening torques

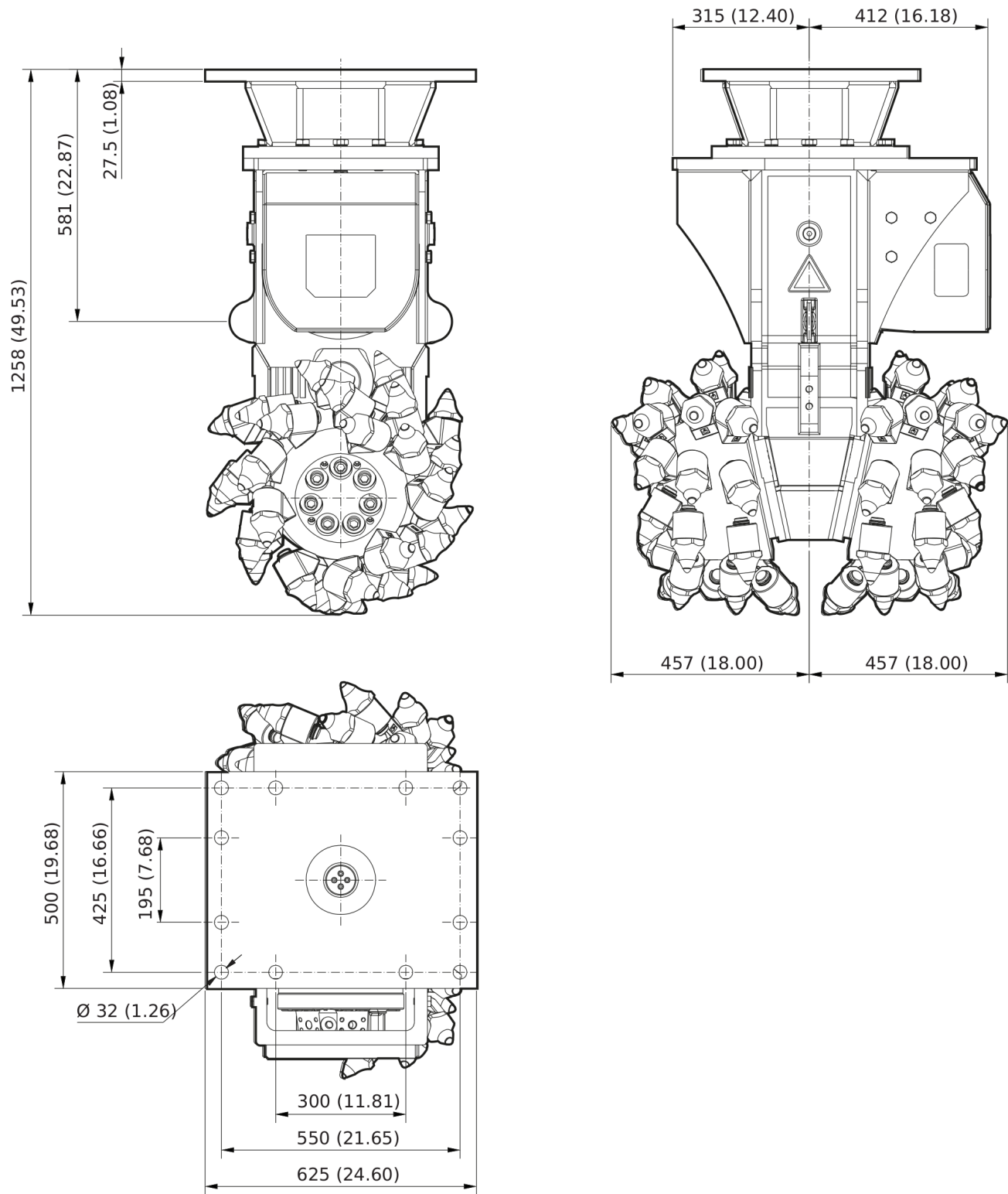
(L)OCAL REMARKS

A | Allen key size 17

B | Open-ended wrench size 30

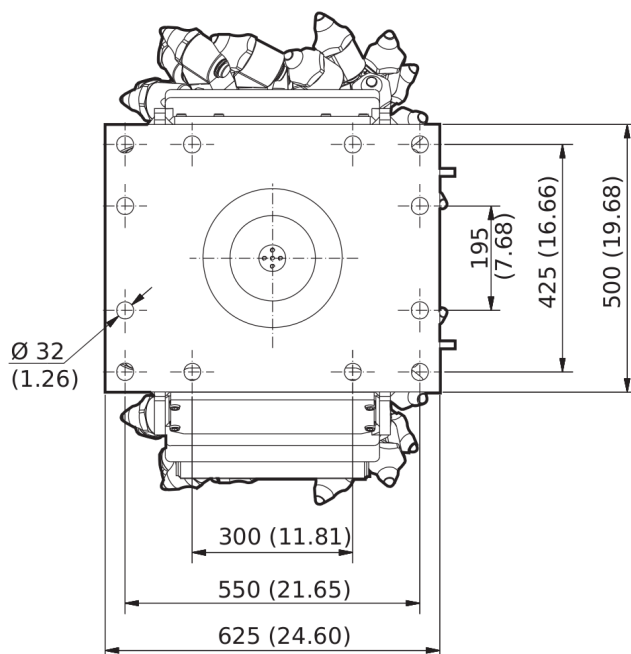
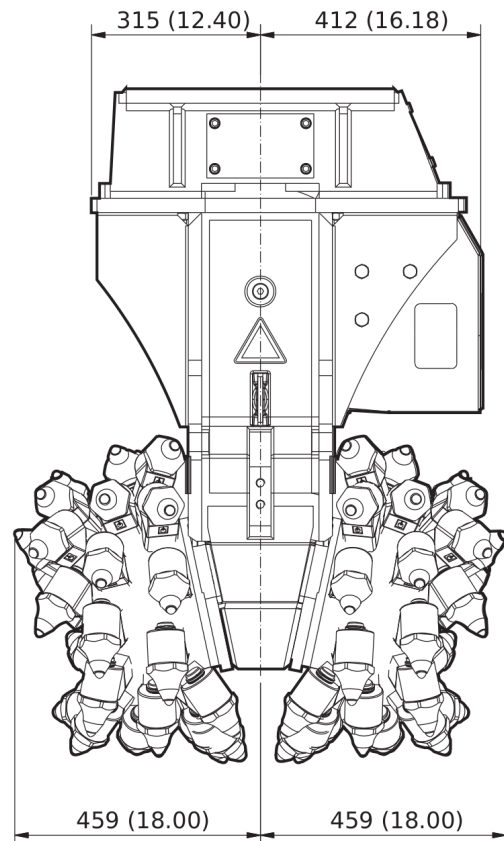
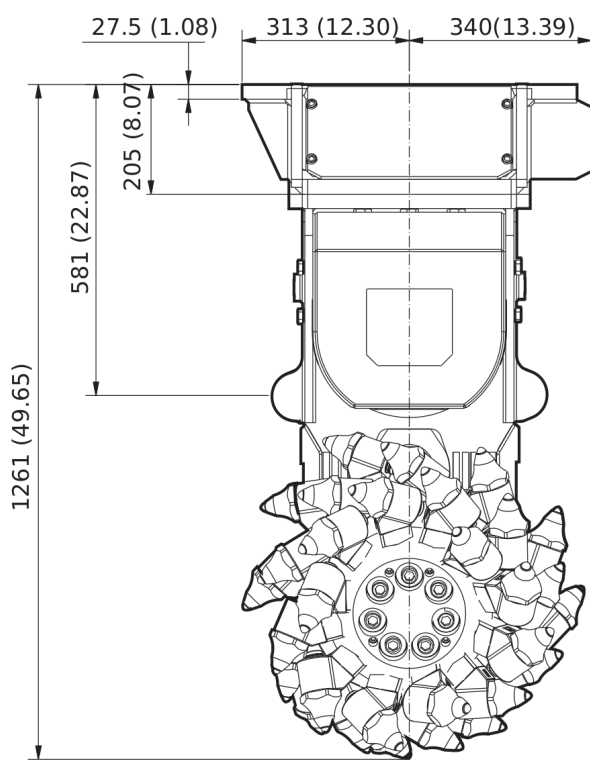
C | Security bit HATCON

Mechanical Dimensions (Rotatable upper part)



This page intentionally left blank

## Mechanical Dimensions (Intermediate bracket)

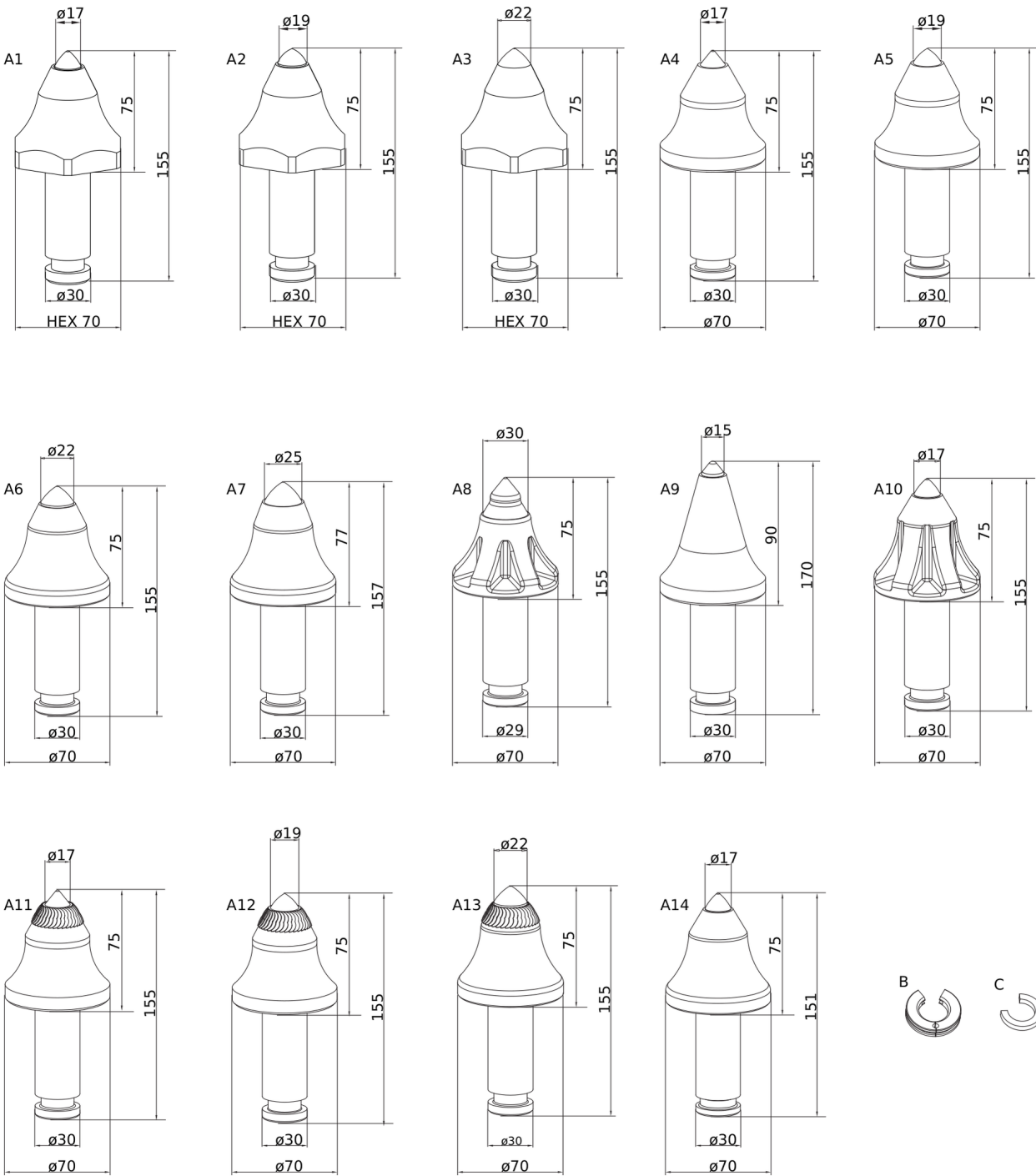


Refer to the DocMine web page for most up-to-date information. The printed information might be outdated.

Thu Feb 29 10:41:53 UTC 2024

This page intentionally left blank

Options / accessories   Picks and retainers kits



| Item | Part No.   | Name                    | Qty | L |
|------|------------|-------------------------|-----|---|
| 1    | 3311006195 | Picks and retainers kit | 1   |   |
| A1   |            | HexPick 17/30           | 10  |   |
| B    | 3311000978 | Quick snap              | 10  |   |
| 2    | 3311006298 | Picks and retainers kit | 1   |   |
| A1   |            | HexPick 17/30           | 10  |   |
| C    | 3311002869 | Retainer clip           | 10  |   |
| 3    | 3311006196 | Picks and retainers kit | 1   |   |
| A2   |            | HexPick 19/30           | 10  |   |
| B    | 3311000978 | Quick snap              | 10  |   |
| 4    | 3311006299 | Picks and retainers kit | 1   |   |
| A2   |            | HexPick 19/30           | 10  |   |
| C    | 3311002869 | Retainer clip           | 10  |   |
| 5    | 3311006351 | Picks and retainers kit | 10  |   |
| A3   |            | HexPick 22/30           | 10  |   |
| C    | 3311002869 | Retainer clip           | 10  |   |
| 6    | 3311004575 | Picks and retainers kit | 1   |   |
| A4   |            | ER17/75/70/30 Q         | 10  |   |
| B    | 3311000978 | Quick snap              | 10  |   |
| 7    | 3311004606 | Picks and retainers kit | 1   |   |
| A4   |            | ER17/75/70/30 Q         | 10  |   |
| C    | 3311002869 | Retainer clip           | 10  |   |
| 8    | 3311004576 | Picks and retainers kit | 1   |   |
| A5   |            | ER19/75/70/30 Q         | 10  |   |
| B    | 3311000978 | Quick snap              | 10  |   |
| 9    | 3311004607 | Picks and retainers kit | 1   |   |
| A5   |            | ER19/75/70/30 Q         | 10  |   |
| C    | 3311002869 | Retainer clip           | 10  |   |
| 10   | 3311004577 | Picks and retainers kit | 1   |   |
| A6   |            | ER22/75/70/30 Q         | 10  |   |
| B    | 3311000978 | Quick snap              | 10  |   |
| 11   | 3311004608 | Picks and retainers kit | 1   |   |
| A6   |            | ER22/75/70/30 Q         | 10  |   |
| C    | 3311002869 | Retainer clip           | 10  |   |
| 12   | 3311004578 | Picks and retainers kit | 1   |   |
| A7   |            | ER25/75/70/30 Q         | 8   |   |
| B    | 3311000978 | Quick snap              | 8   |   |
| 13   | 3311004609 | Picks and retainers kit | 1   |   |

Refer to the DocMine web page for most up-to-date information. The printed information might be outdated.

Thu Feb 29 10:41:54 UTC 2024

| Item | Part No.   | Name                    | Qty | L |
|------|------------|-------------------------|-----|---|
| A7   |            | ER25/75/70/30 Q         | 8   |   |
| C    | 3311002869 | Retainer clip           | 8   |   |
| 14   | 3311004579 | Picks and retainers kit | 1   |   |
| A8   |            | ER30/77/70/30 Q         | 10  |   |
| B    | 3311000978 | Quick snap              | 10  |   |
| 15   | 3311004613 | Picks and retainers kit | 1   |   |
| A8   |            | ER30/77/70/30 Q         | 10  |   |
| C    | 3311002869 | Retainer clip           | 10  |   |
| 16   | 3311004580 | Picks and retainers kit | 1   |   |
| A9   |            | ER15/90/70/30 Q         | 10  |   |
| B    | 3311000978 | Quick snap              | 10  |   |
| 17   | 3311004614 | Picks and retainers kit | 1   |   |
| A9   |            | ER15/90/70/30 Q         | 10  |   |
| C    | 3311002869 | Retainer clip           | 10  |   |
| 18   | 3311004581 | Picks and retainers kit | 1   |   |
| A10  |            | ER17/75/70/30 QE        | 10  |   |
| B    | 3311000978 | Quick snap              | 10  |   |
| 19   | 3311004615 | Picks and retainers kit | 1   |   |
| A10  |            | ER17/75/70/30 QE        | 10  |   |
| C    | 3311002869 | Retainer clip           | 10  |   |
| 20   | 3311004582 | Picks and retainers kit | 1   |   |
| A11  |            | ER17/75/70/30 PQ        | 10  |   |
| B    | 3311000978 | Quick snap              | 10  |   |
| 21   | 3311004616 | Picks and retainers kit | 1   |   |
| A11  |            | ER17/75/70/30 PQ        | 10  |   |
| C    | 3311002869 | Retainer clip           | 10  |   |
| 22   | 3311004583 | Picks and retainers kit | 1   |   |
| A12  |            | ER19/75/70/30 PQ        | 10  |   |
| B    | 3311000978 | Quick snap              | 10  |   |
| 23   | 3311004617 | Picks and retainers kit | 1   |   |
| A12  |            | ER19/75/70/30 PQ        | 10  |   |
| C    | 3311002869 | Retainer clip           | 10  |   |
| 24   | 3311004584 | Picks and retainers kit | 1   |   |
| A13  |            | ER22/75/70/30 PQ        | 10  |   |
| B    | 3311000978 | Quick snap              | 10  |   |
| 20   | 3311004618 | Picks and retainers kit | 1   |   |
| A13  |            | ER22/75/70/30 PQ        | 10  |   |

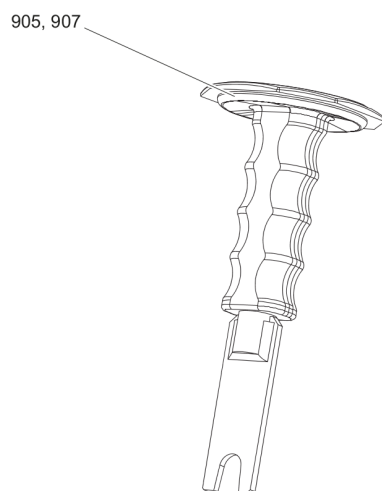
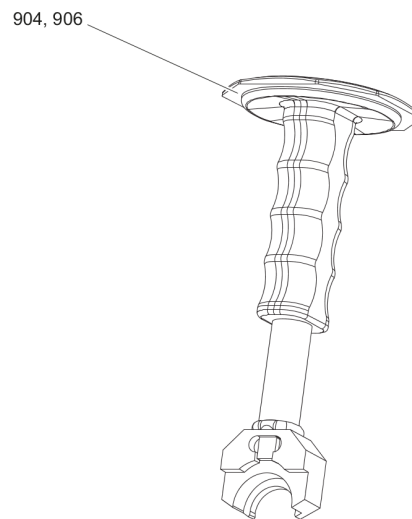
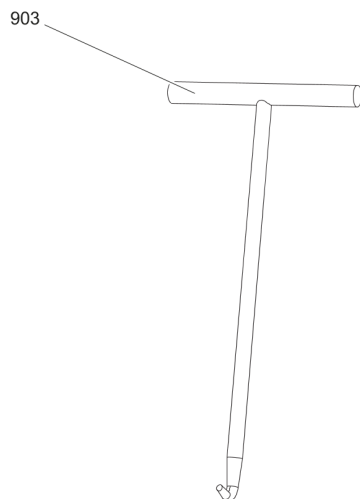
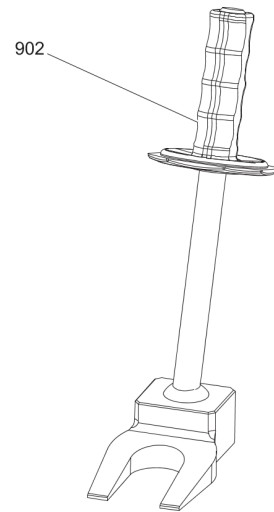
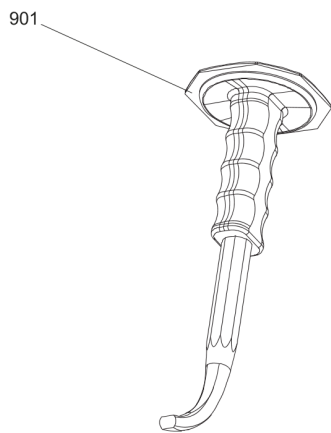
Refer to the DocMine web page for most up-to-date information. The printed information might be outdated.

Thu Feb 29 10:41:54 UTC 2024



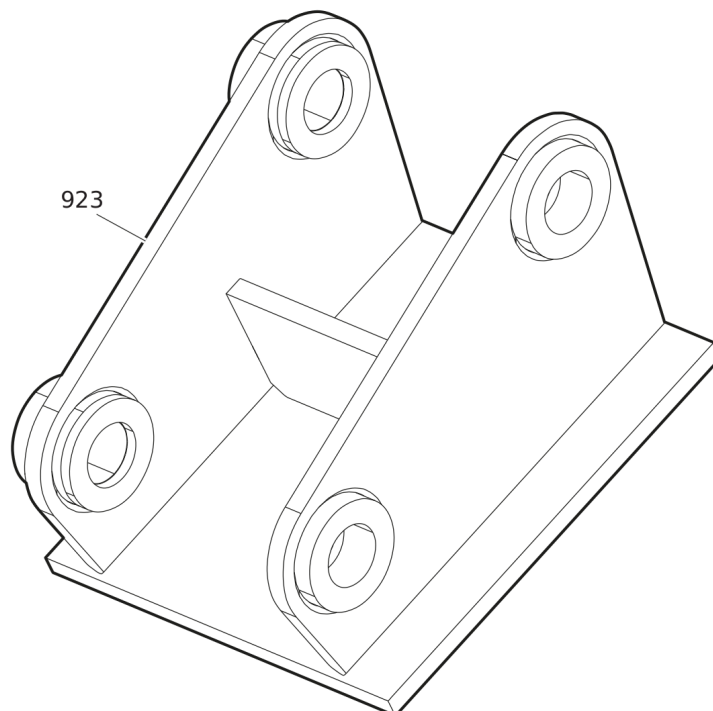
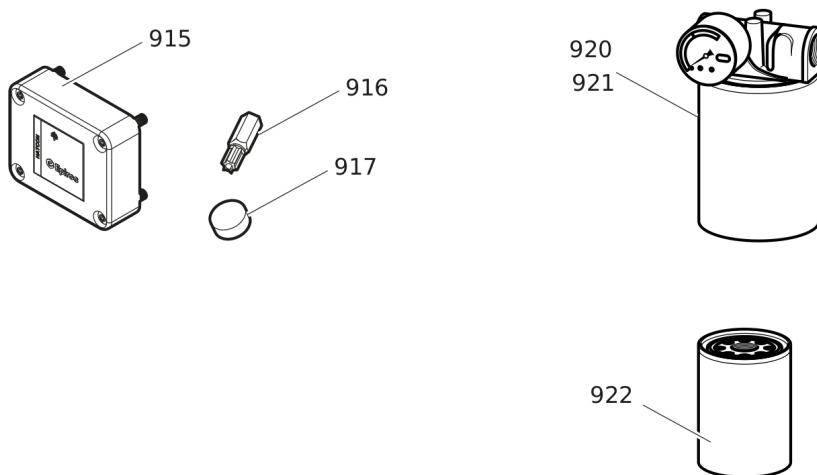
| Item | Part No.   | Name                    | Qty | L |
|------|------------|-------------------------|-----|---|
| C    | 3311002869 | Retainer clip           | 10  |   |
| 21   | 3311004585 | Picks and retainers kit | 1   |   |
| A14  |            | ER17/75/70/30 C         | 10  |   |
| C    | 3311002869 | Retainer clip           | 10  |   |

## Options / accessories Tools for picks



| Item | Part No.   | Name  | Qty | L |
|------|------------|---|-----|---|
| 901  | 3311000989 | Knock out tool  | 1   |   |
| 902  | 3311002872 | Knock out tool for stuck picks                        | 1   |   |
| 903  | 3311000980 | Puller tool for quick snap retainers                  | 1   |   |
| 904  | 3311004217 | Mounting toolfor retaining clips                      | 1   |   |
| 905  | 3311004218 | Dismantling toolfor retaining clips                   | 1   |   |
| 906  | 3311002876 | Mounting toolfor retaining clips (ER17/75/70/30 C)    | 1   |   |
| 907  | 3311002195 | Dismantling toolfor retaining clips (ER17/75/70/30 C) | 1   |   |

## Options / accessories Optional equipment



| Item | Part No.   | Name  | Qty | L |
|------|------------|---|-----|---|
| 915  | 3315442500 | HATCON KIT 1 (3G)   | 1   | A |
| 915  | 3315442520 | HATCON KIT 1 (LTE)  | 1   |   |
| 916  | 3315439105 | SECURITY BIT HATCON   | 1   |   |
| 917  | 3315439106 | MAGNET HATCON   | 1   |   |
| 920  | 3311003111 | Hydraulic filter set for leakage oil, metric  | 1   |   |
| 921  | 3311003195 | Hydraulic filter set for leakage oil, JIC   | 1   |   |
| 922  | 3311003087 | Filter cartridge for leakage oil, metric and JIC  | 1   |   |
| 923  |            | ADAPTER PLATE matching the carrier. Consult the authorized Customer Center/Dealer in your area. | 1   |   |

Comments for Page: Optional equipment

A | with item 916 and 917





Any unauthorized use or copying of the contents or any part thereof is prohibited.  
This applies in particular to trademarks, model denominations, part numbers, and  
drawings.