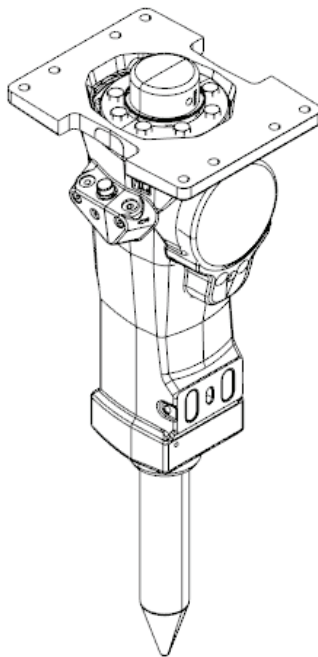


SB 452 Tunnel

Spare parts list

Hydraulic breakers

SB 452 Tunnel s/n BES083100 –



General information

This spare parts list applies to the following:

| Part number | Description |
|-------------|---------------|
| 8460030073 | SB 452 Tunnel |

Use only authorized parts. Any damage or malfunction caused by the use of unauthorized parts is not covered by Warranty or Product Liability. Any unauthorized use or copying of the contents or any part thereof is prohibited. This applies in particular to trademarks, model denominations, part numbers, and drawings.

Instructions for use

This spare parts list contains no safety regulations and is merely intended to assist in the ordering of spare parts.

For information about operating, servicing, or repairing, the relevant Safety and operating instructions must be consulted at all costs.

Please observe the safety instructions listed in the relevant Safety and operating instructions!

Service, repair and wear parts Kits

| | |
|------------------------|---|
| Label kit | 1 |
| Seal kit | 3 |
| Lower hammer part kit | 5 |
| Accumulator repair kit | 7 |

Mechanical

| | |
|---|----|
| Hydraulic breaker | 9 |
| Optional parts - Bushing oversize, complete | 13 |
| Optional parts - Restrictor, complete | 15 |
| Tightening torque | 17 |
| Dimensions (mm) | 19 |
| Assembly instruction | 20 |

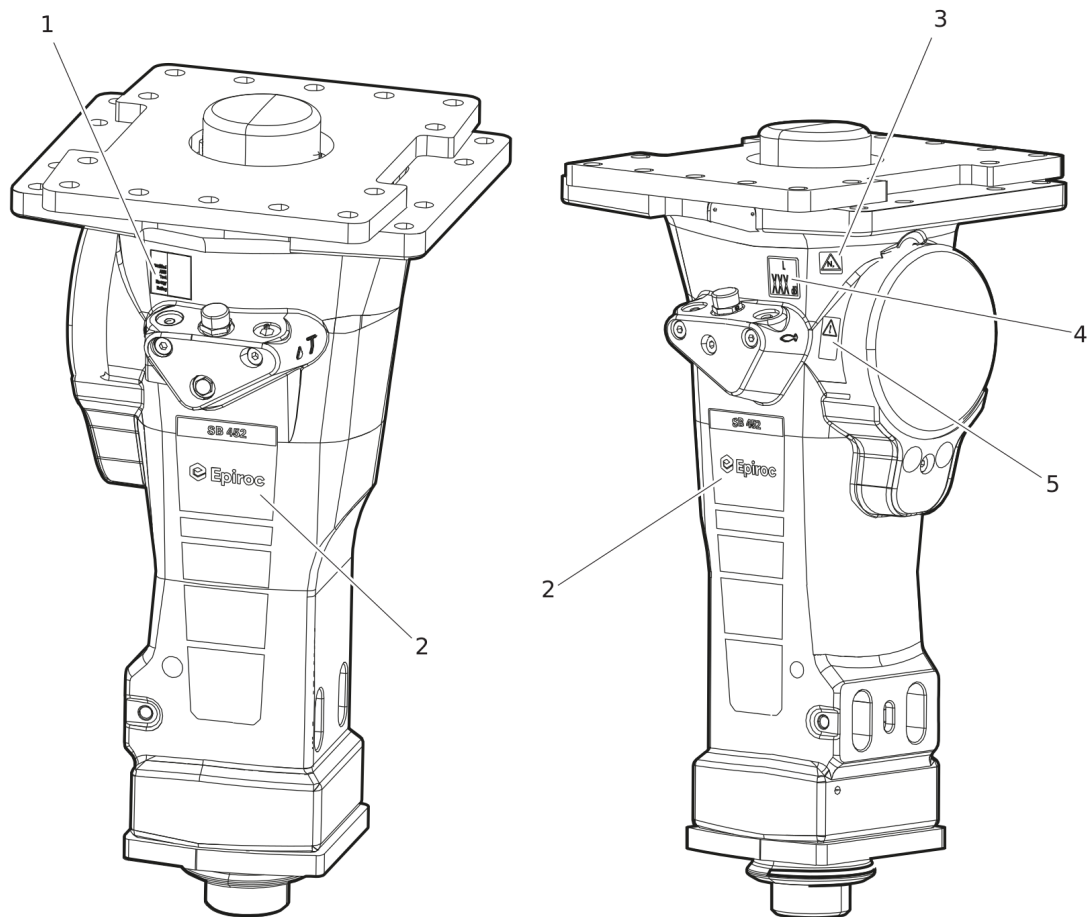
Option and accessories

| | |
|---------------------------|----|
| Hydraulic hoses | 22 |
| Optional equipment | 25 |
| Working Tools ClassicLine | 27 |

Annex

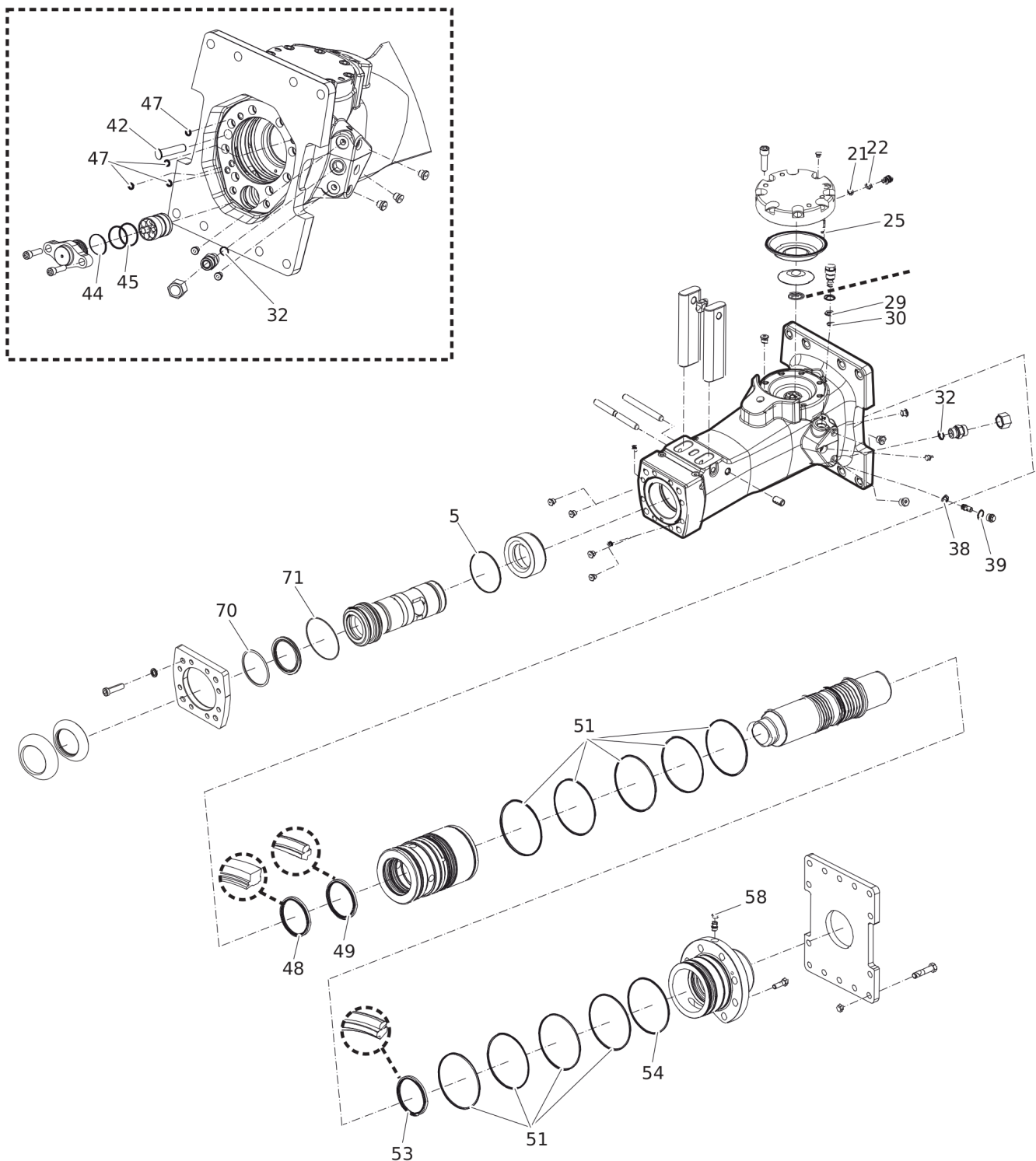
| | |
|--|----|
| Environmental Product Compliance - REACH Declaration | 29 |
|--|----|

Service, repair and wear parts Kits Label kit



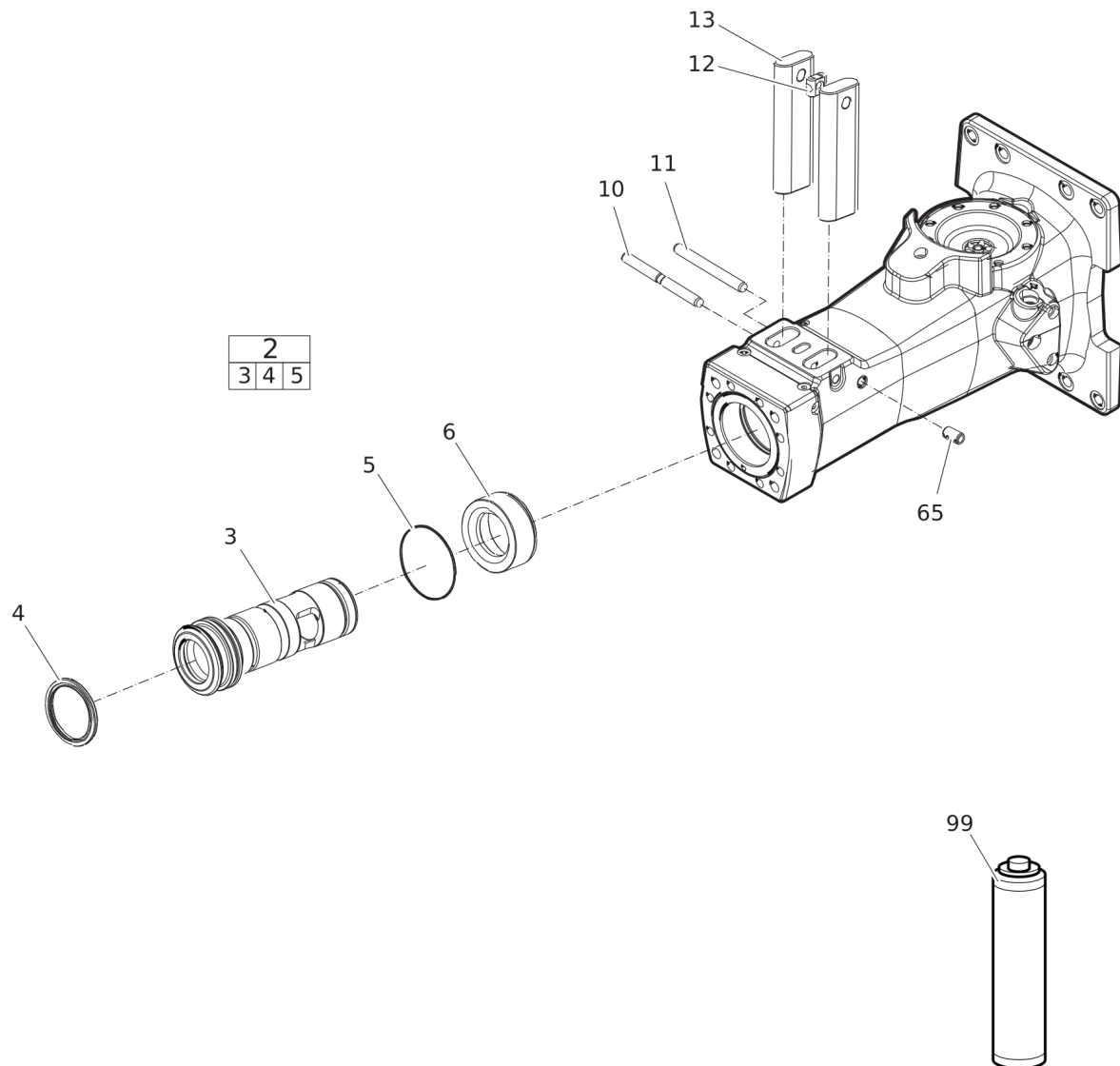
| Item | Part No. | Name | Qty | L |
|------|------------|-------------------|-----|---|
| KIT | 3315312791 | LABEL KIT | 1 | |
| 1 | | AEM SIGN | 1 | |
| 2 | | PRODUCT LABEL | 2 | |
| 3 | | SAFETY LABEL | 1 | |
| 4 | | SOUND POWER LABEL | 1 | |
| 5 | | SAFETY LABEL | 1 | |

Service, repair and wear parts Kits Seal kit



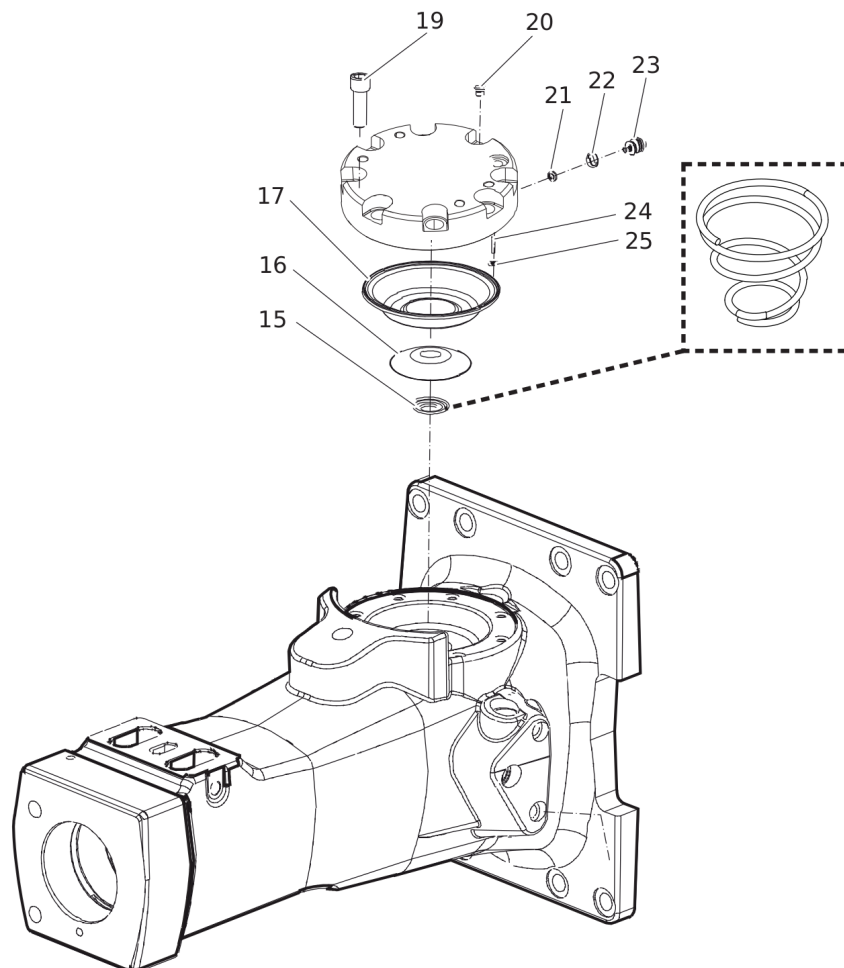
| Item | Part No. | Name | Qty | L |
|------|------------|-----------------|-----|---|
| KIT | 3382070103 | SEAL KIT | 1 | |
| 5 | 0663714700 | O-RING | 1 | |
| 21 | 3115329002 | SEAL RING | 1 | |
| 22 | 0663212000 | O-RING | 1 | |
| 25 | 0663211400 | O-RING | 1 | |
| 29 | 0663210421 | O-RING | 1 | |
| 30 | 0661200401 | BACK-UP RING | 1 | |
| 32 | 0664000004 | SEAL RING | 2 | |
| 38 | 0663210421 | O-RING | 1 | |
| 39 | 0663212141 | O-RING | 1 | |
| 42 | 3315336700 | PLUG | 1 | |
| 43 | 3315362820 | VALVE COVER | 1 | |
| 44 | 0663211491 | O-RING | 1 | |
| 45 | 0663990026 | SEAL RING | 2 | |
| 47 | 0665090014 | SEAL RING | 4 | |
| 48 | 0665909964 | WIPER | 1 | |
| 49 | 0665070147 | PISTON ROD SEAL | 1 | |
| 51 | 0663990032 | SEAL RING | 9 | |
| 53 | 0665070148 | PISTON ROD SEAL | 1 | |
| 54 | 0663210417 | O-RING | 1 | |
| 58 | 3315280800 | VALVE RUBBER | 1 | |
| 70 | 0663210658 | O-RING | 1 | |
| 71 | 0663212007 | O-RING | 1 | |

Service, repair and wear parts Kits Lower hammer part kit



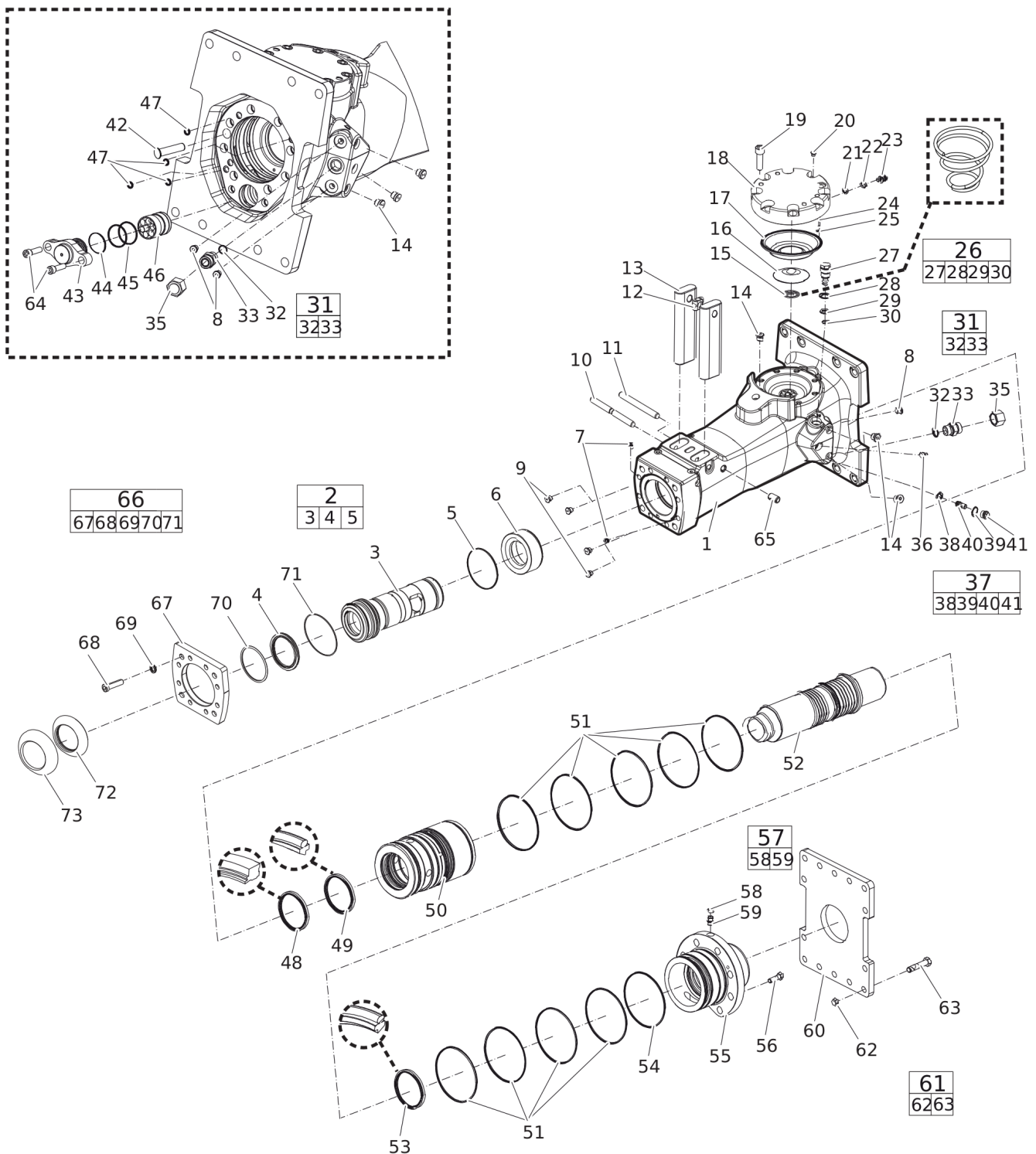
| Item | Part No. | Name | Qty | L |
|--------|------------|--|-----|---|
| KIT | 3382070109 | LOWER HAMMER PART KIT | 1 | |
| 2(3-5) | 3315435060 | BUSHING, complete | 1 | |
| 3 | | BUSHING, Ø 129 mm (Ø 5.08 in.) | 1 | |
| 4 | 3315353600 | SCRAPER RING | 1 | |
| 5 | 0663714700 | O-RING | 4 | |
| 6 | 3315312300 | STOP RING | 1 | |
| 10 | 3315155810 | LOCK PIN | 1 | |
| 11 | 3315434900 | BUSHING PIN | 1 | |
| 12 | 3315141900 | LOCK BUFFER | 1 | |
| 13 | 3315155710 | RETAINER BAR | 2 | |
| 65 | 0108110322 | SPRING PIN | 1 | |
| 99 | | BIO CHISEL PASTE CARTRIDGE, 1 x 400 g (0.88 lbs) | 1 | |

Service, repair and wear parts Kits Accumulator repair kit



| Item | Part No. | Name | Qty | L |
|------|------------|------------------------|-----|---|
| KIT | 3315303190 | ACCUMULATOR REPAIR KIT | 1 | |
| 15 | 3315303500 | COIL SPRING | 1 | |
| 16 | 3315303201 | DIAPHRAGM SUPPORT | 1 | |
| 17 | 3315416300 | DIAPHRAGM | 1 | |
| 19 | 0211196544 | HEXAGON SOCKET SCREW | 8 | |
| 20 | 0686371805 | PLUG | 1 | |
| 21 | 3115329002 | SEAL RING | 1 | |
| 22 | 0663212000 | O-RING | 1 | |
| 23 | 3315366000 | VALVE | 1 | |
| 24 | 0101414000 | PIN | 1 | |
| 25 | 0663211400 | O-RING | 1 | |

Mechanical Hydraulic breaker



Refer to the DocMine web page for most up-to-date information. The printed information might be outdated.

Tue Aug 13 08:43:40 UTC 2024

| Item | Part No. | Name | Qty | L |
|-----------|------------|---------------------------------|-----|---|
| 1 | | BREAKER BODY | 1 | |
| 2(3-5) | 3315435060 | BUSHING, complete | 1 | A |
| 3 | | BUSHING, Ø 129 mm (Ø 5.08 in.) | 1 | |
| 4 | 3315353600 | SCRAPER RING | 1 | |
| 5 | 0663714700 | O-RING | 1 | |
| 6 | 3315312300 | STOP RING | 1 | |
| 7 | 0686100009 | PLUG | 2 | |
| 8 | 0686644207 | PLUG | 3 | B |
| 9 | 3315395200 | WATER NOSSLE | 4 | |
| 10 | 3315155810 | LOCK PIN | 1 | |
| 11 | 3315434900 | BUSHING PIN | 1 | |
| 12 | 3315141900 | LOCK BUFFER | 1 | |
| 13 | 3315155710 | RETAINER BAR | 2 | |
| 14 | 0686371801 | PLUG | 6 | C |
| 15 | 3315303500 | COIL SPRING | 1 | |
| 16 | 3315303201 | DIAPHRAGM SUPPORT | 1 | |
| 17 | 3315416300 | DIAPHRAGM | 1 | |
| 18 | 3315303100 | DIAPHRAGM COVER | 1 | |
| 19 | 0211196544 | HEXAGON SOCKET SCREW | 8 | D |
| 20 | 0686371805 | PLUG | 1 | E |
| 21 | 3115329002 | SEAL RING | 1 | |
| 22 | 0663212000 | O-RING | 1 | |
| 23 | 3315366000 | VALVE | 1 | |
| 24 | 0101414000 | PIN | 1 | |
| 25 | 0663211400 | O-RING | 1 | |
| 26(27-30) | 3315365800 | PRESSURE RELIEF VALVE, complete | 1 | F |
| 27 | - | PRESSURE RELIEF VALVE | 1 | |
| 28 | 0663212141 | O-RING | 1 | |
| 29 | 0663210421 | O-RING | 1 | |
| 30 | 0661200401 | BACK-UP RING | 1 | |
| 31(32-33) | 0580001845 | NIPPLE, complete | 1 | G |
| 32 | 0664000004 | SEAL RING | 2 | |
| 33 | | NIPPLE | 1 | |
| 35 | 0570700010 | CAP | 2 | |
| 36 | 3360433774 | GREASE NIPPLE | 1 | |
| 37(38-40) | 3315369687 | RESTRICTOR, complete | 1 | H |
| 38 | 0663210421 | O-RING | 1 | |

Refer to the DocMine web page for most up-to-date information. The printed information might be outdated.

Tue Aug 13 08:43:40 UTC 2024

| Item | Part No. | Name | Qty | L |
|-----------|------------|-----------------------------------|-----|---|
| 39 | 0663212141 | O-RING | 1 | |
| 40 | | RESTRICTOR, Ø 8.7 mm (Ø 0.34 in.) | 1 | |
| 41 | 3315369200 | RESTRICTOR PLUG | 1 | |
| 42 | 3315336700 | PLUG | 1 | |
| 43 | 3315362820 | VALVE COVER | 1 | |
| 44 | 0663211491 | O-RING | 1 | |
| 45 | 0663990026 | SEAL RING | 2 | |
| 46 | 3315312100 | CONTROL VALVE | 1 | |
| 47 | 0665090014 | SEAL RING | 4 | |
| 48 | 0665909964 | WIPER | 1 | |
| 49 | 0665070147 | PISTON ROD SEAL | 1 | |
| 50 | 3315312000 | LINER | 1 | |
| 51 | 0663990032 | SEAL RING | 9 | |
| 52 | 3315311910 | PISTON | 1 | |
| 53 | 0665070148 | PISTON ROD SEAL | 1 | |
| 54 | 0663210417 | O-RING | 1 | |
| 55 | 3315312600 | BACK HEAD | 1 | |
| 56 | 0147155503 | SCREW, HEX HEAD | 8 | |
| 57(58-59) | 3315244881 | CHECK VALVE, complete | 1 | |
| 58 | 3315280800 | VALVE RUBBER | 1 | |
| 59 | | CHECK VALVE | 1 | |
| 60 | 3315307700 | BASE PLATE | 1 | |
| 61(62-63) | 3315323890 | SCREW SET | 1 | |
| 62 | | NUT | 8 | |
| 63 | | SCREW, M20 x 90 mm | 8 | |
| 64 | 0211110495 | HEXAGON SOCKET SCREW | 2 | |
| 65 | 0108110322 | SPRING PIN | 1 | |
| 66(67-71) | 3382070112 | WEAR PLATE, complete | 1 | |
| 67 | | WEAR PLATE | 1 | |
| 68 | 0215001042 | HEXAGON SOCKET SCREW | 8 | |
| 69 | 0333520027 | LOCK WASHER | 8 | |
| 70 | 0663210658 | O-RING | 1 | |
| 71 | 0663212007 | O-RING | 1 | |
| 72 | 3315239710 | DUST COVER | 1 | |
| 73 | 3315264200 | FRONT SHIELD | 1 | |

Comments for Page: Hydraulic breaker

Refer to the DocMine web page for most up-to-date information. The printed information might be outdated.

Tue Aug 13 08:43:41 UTC 2024

(LOCAL REMARKS

A | For oversize bushings, see section "Bushing oversize, complete".

B | VSTI G 1/4 - ED

C | VSTI G 3/8- ED

D | Screw with extra high fatigue strength.

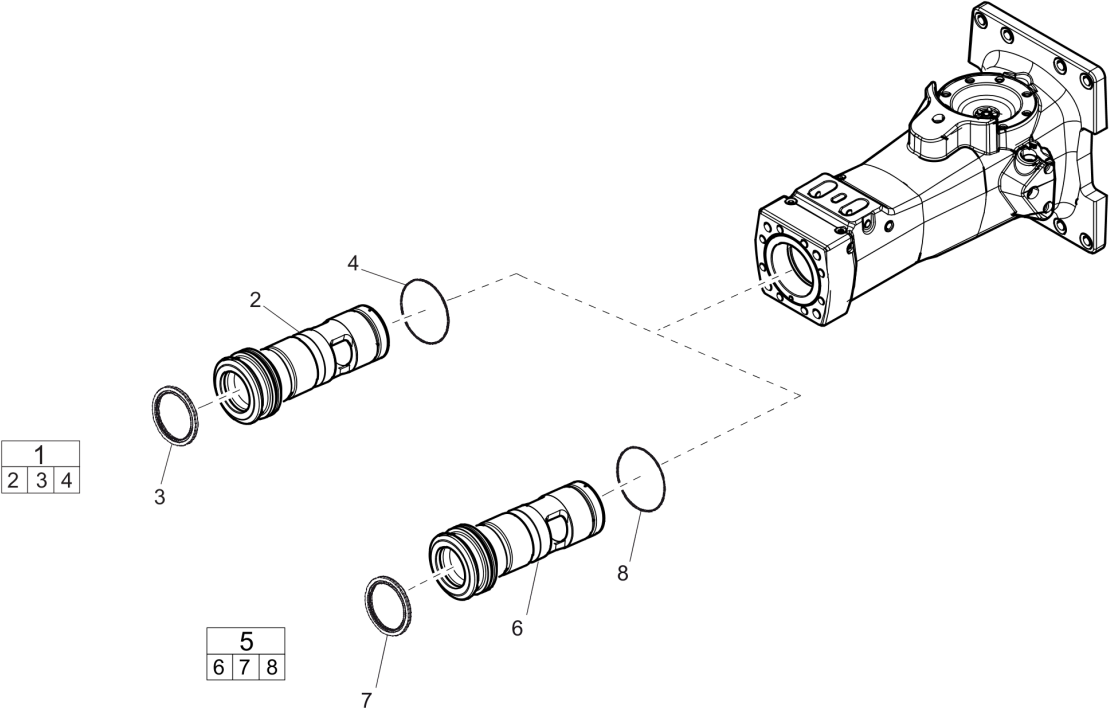
E | VSTI R 1/8- ED

F | CAS No. see chapter "Environmental Product Compliance - REACH Declaration"

G | with one time item 32 and 34. There are two "Fitting, complete" on the machine.

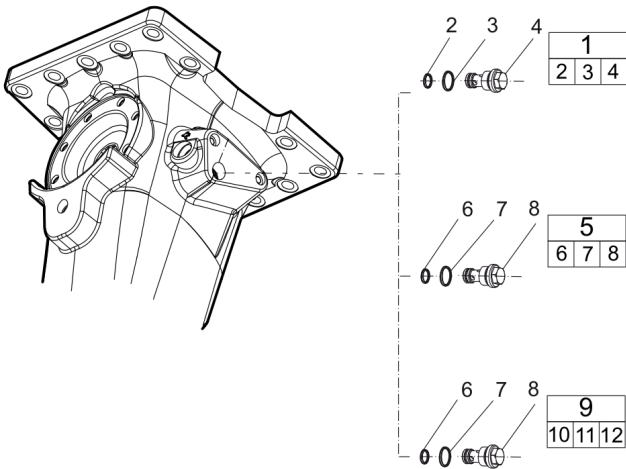
H | For more restrictors, see section "Restrictors, complete".

Mechanical Optional parts - Bushing oversize, complete



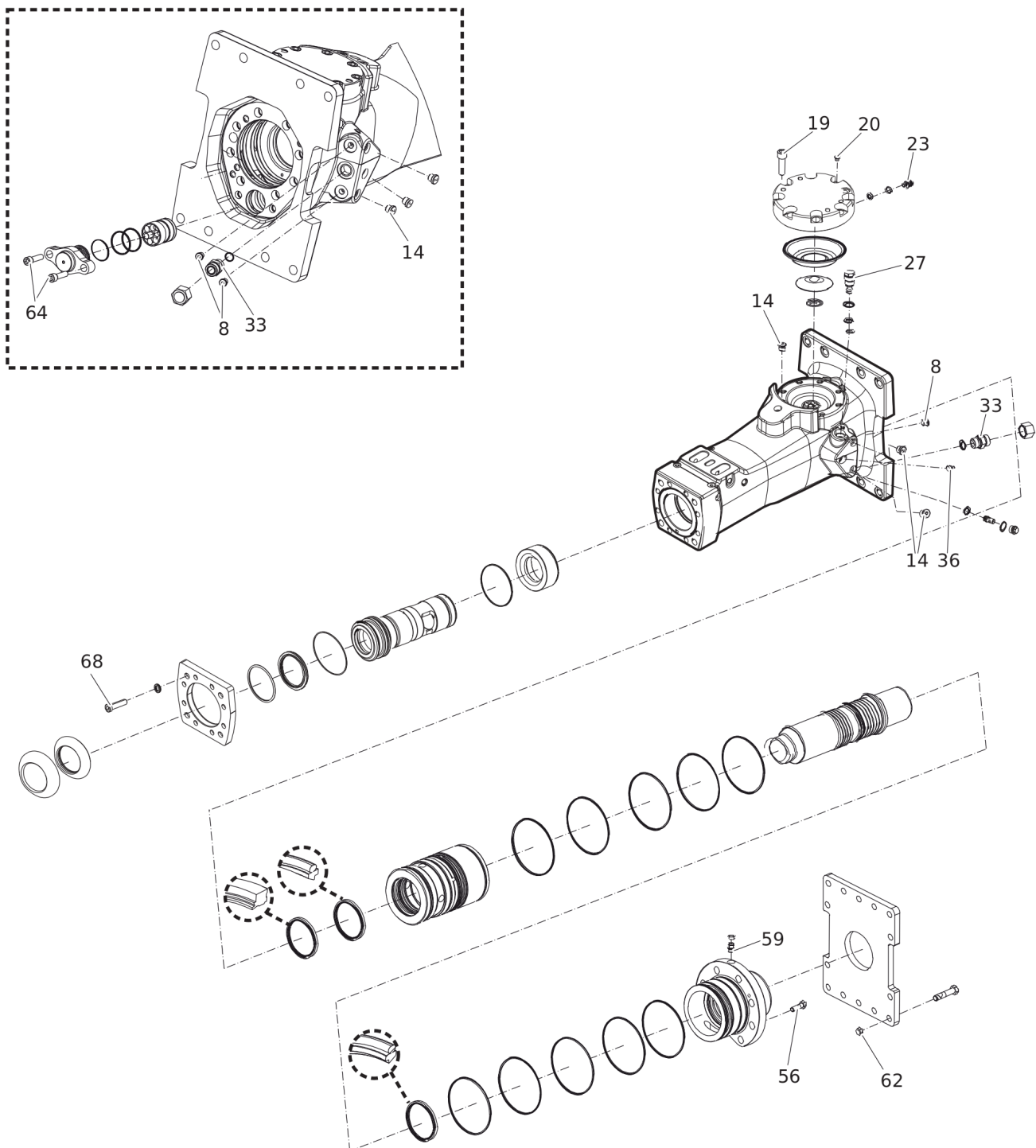
| Item | Part No. | Name | Qty | L |
|------|------------|--|-----|---|
| 1 | 3315435061 | BUSHING (press fit oversize), complete | 1 | |
| 2 | - | BUSHING, Ø 130.5 mm (Ø 5.11 in.) | 1 | |
| 3 | 3315353600 | SCRAPER RING | 1 | |
| 4 | 0663714700 | O-RING | 1 | |
| 5 | 3315435062 | BUSHING (press fit oversize), complete | 1 | |
| 6 | - | BUSHING, Ø 132 mm (Ø 5.2 in.) | 1 | |
| 7 | 3315353600 | SCRAPER RING | 1 | |
| 8 | 0663714700 | O-RING | 1 | |

Mechanical Optional parts - Restrictor, complete



| Item | Part No. | Name | Qty | L |
|------|------------|-----------------------------------|-----|---|
| 1 | 3315369635 | RESTRICTOR, complete | 1 | |
| 2 | 0663210421 | O-RING | 1 | |
| 3 | 0663212141 | O-RING | 1 | |
| 4 | | RESTRICTOR, Ø 6.0 mm (Ø 0.24 in.) | 1 | |
| 5 | 3315369645 | RESTRICTOR, complete | 1 | |
| 6 | 0663210421 | O-RING | 1 | |
| 7 | 0663212141 | O-RING | 1 | |
| 8 | | RESTRICTOR, Ø 6.7 mm (Ø 0.26 in.) | 1 | |
| 9 | 3315369653 | RESTRICTOR, complete | 1 | |
| 10 | 0663210421 | O-RING | 1 | |
| 11 | 0663212141 | O-RING | 1 | |
| 12 | | RESTRICTOR, Ø 7.5 mm (Ø 0.30 in.) | 1 | |

Mechanical Tightening torque



| Item | Part No. | Name | Qty | L |
|------|----------|--|-----|---|
| 8 | | PLUG - 30 Nm (22 ft lbf) | - | A |
| 14 | - | PLUG - 80 Nm (59 ft lbf) | - | A |
| 19 | | HEXAGON SOCKET SCREW - 300 Nm (221 ft lbf) | - | B |
| 20 | - | PLUG - 20 Nm (15 ft lbf) | - | |
| 23 | | VALVE - 27 Nm (20 ft lbf) | - | |
| 27 | | PRESSURE RELIEF VALVE - 80 Nm (59 ft lbf) | - | |
| 33 | | FITTING - 120 Nm (89 ft lbf) | - | |
| 36 | | GREASE NIPPLE - 30 Nm (22 ft lbf) | - | |
| 56 | | HEXAGON HEAD SCREW - 315 Nm (232 ft lbf) | - | B |
| 59 | | CHECK VALVE - 30 Nm (22 ft lbf) | - | A |
| 62 | | NUT - 400 Nm (295 ft lbf) | - | B |
| 64 | - | HEXAGON SOCKET SCREW - 615 Nm (454 ft lbf) | - | B |
| 68 | - | HEXAGON SOCKET SCREW - 240 Nm (177 ft lbf) | - | |

Comments for Page: Tightening torque

LOCTITE is a registered trademark of Henkel Corporation. 243 is a trademark of Henkel Corporation.

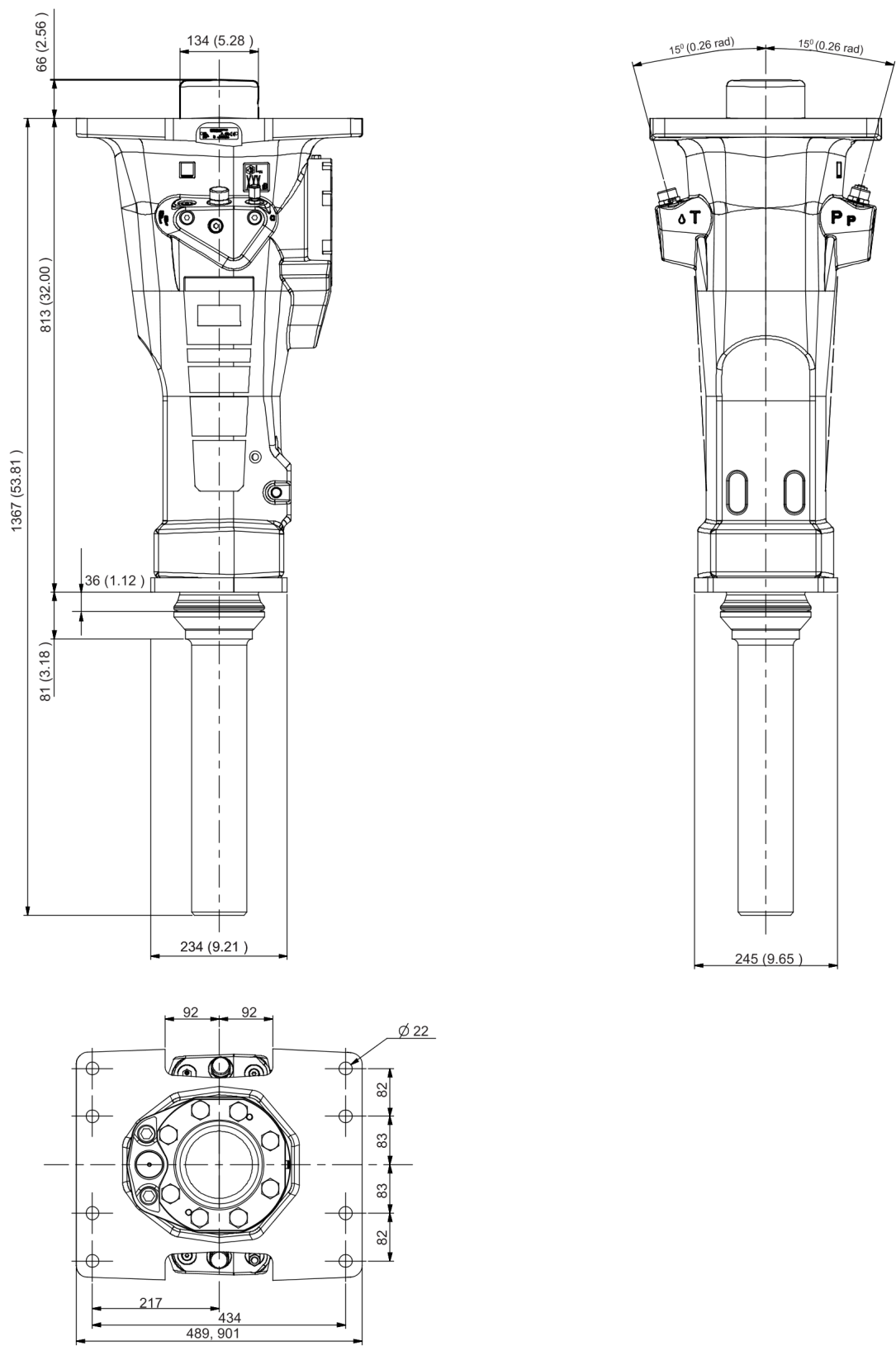
Molykote is a registered trademark of Dow Corning Corporation.

(L)OCAL REMARKS

A | LOCTITE® 243™

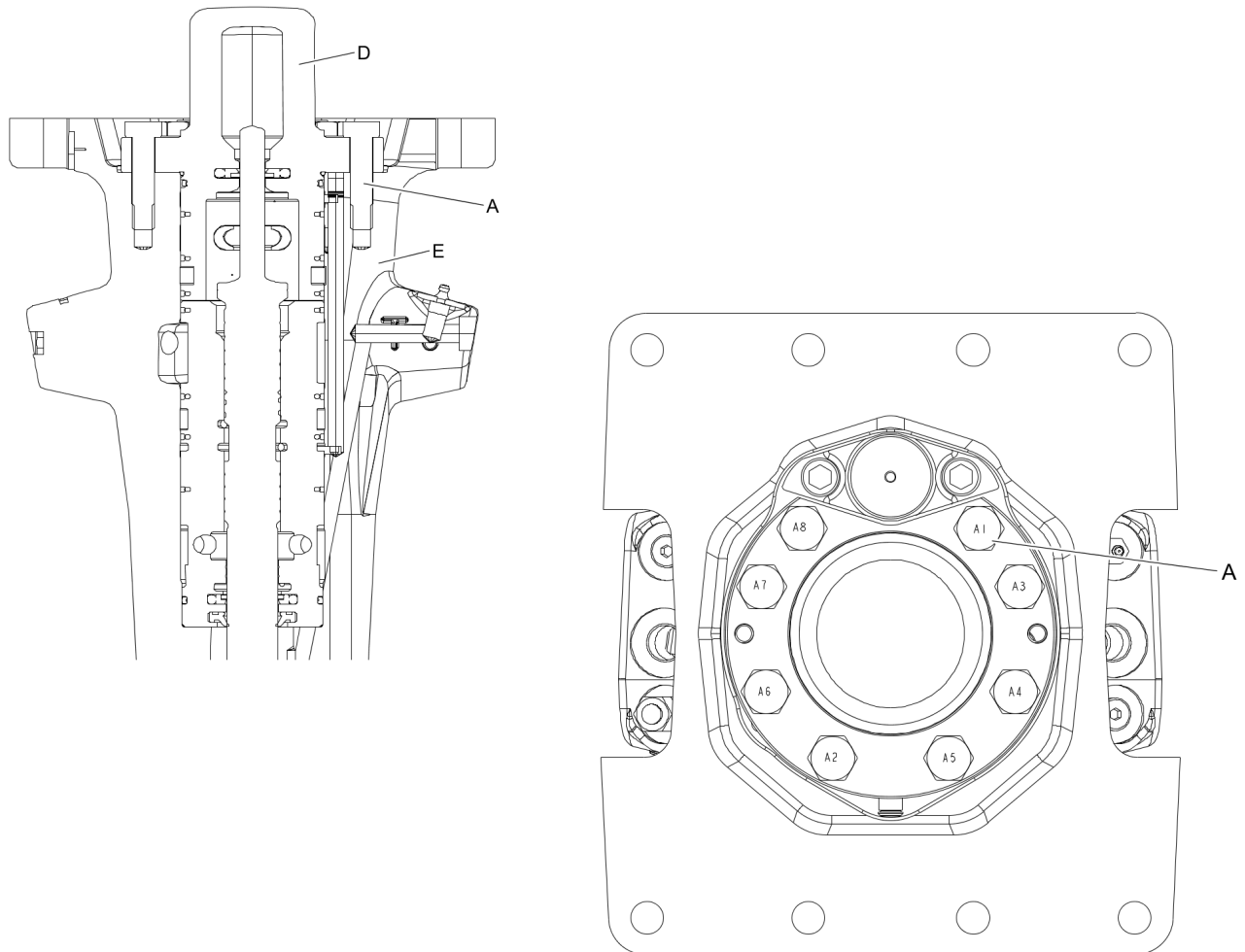
B | Molykote®

Mechanical Dimensions (mm)



This page intentionally left blank

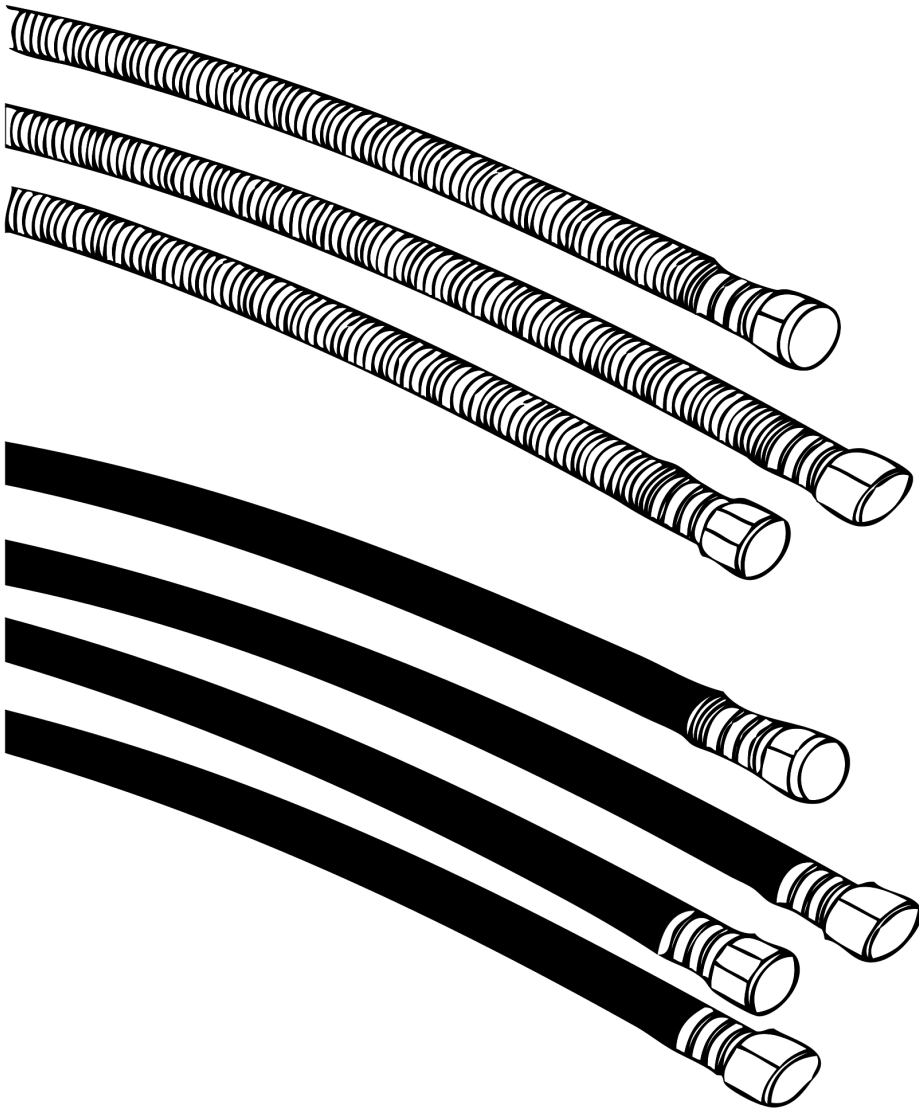
Mechanical Assembly instruction



1. Press the back head (D) down on the hammer body(E).
2. Grease the screws (A) with Molykote® 1000 (Molykote is a registered trademark of Dow Corning Corporation), and manually fit them on the back head (D)
3. Torque the screws (A) in the order from A1 to A8.

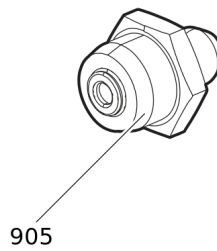
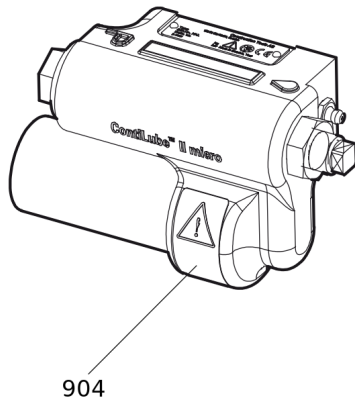
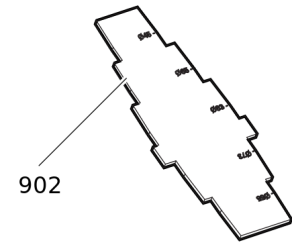
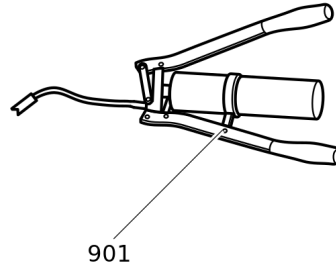
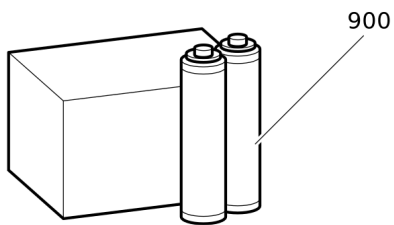
This page intentionally left blank

Option and accessories Hydraulic hoses



| Item | Part No. | Name | Qty | L |
|------|------------|--|-----|---|
| - | 3360995717 | HYDRAULIC HOSE, both ends 18 L (M26 x 1.5) length 1500 mm (59 in.) | 2 | |
| - | 3362235159 | HYDRAULIC HOSE, both ends 18 L (M26 x 1.5) length 2000 mm (79 in.) | 2 | |
| - | 3363083313 | HYDRAULIC HOSE, both ends 18 L (M26 x 1.5) length 2400 mm (95 in.) | 2 | |
| - | 3363098019 | ADDITIONAL FITTING KIT | 1 | |

Option and accessories Optional equipment



| Item | Part No. | Name | Qty | L |
|------|------------|--|-----|---|
| 900 | 3363122354 | BIO CHISEL PASTE, 20 x 150 g (0.33 lbs) | 1 | A |
| 900 | 3363122355 | BIO CHISEL PASTE CARTRIDGE FOR GREASE GUN, 12 x 400 g (0.88 lbs) | 1 | |
| - | 3363122357 | BIO CHISEL PASTE CONTAINER 15 kg (33 lbs) | 1 | |
| - | 3363122358 | BIO CHISEL PASTE CONTAINER 45 kg (99 lbs) | 1 | |
| 901 | 0909107100 | LUBRICAT.GUN | 1 | |
| 902 | 3315353100 | BUSHING WEAR CONTROLLER | 1 | |
| 904 | 3315383190 | CONTILUBE II MICRO | 1 | |
| 905 | 3363094459 | NIPPLE, for charging the accumulator | 1 | |
| - | 3360920415 | FILLING DEVICE, for accumulator | 1 | |
| - | 3361329803 | FILLING HOSE, for charging the accumulator | 1 | |

Option and accessories Working Tools ClassicLine

1

234

3

4

2

L=470 mm

LT=890 mm

W= Ø95 mm

WT= 43.3 Kg

L=18.5 inch

LT=35.0 inch

W= Ø3.7 inch

WT= 95.5 lb

5

678

7

8

6

L=470 mm

LT=890 mm

W= Ø95 mm

WT= 46.9 Kg

L=18.5 inch

LT=35.0 inch

W= Ø3.7 inch

WT= 103.4 lb

9

101112

11

12

10

L=470 mm

LT=890 mm

W= Ø95 mm

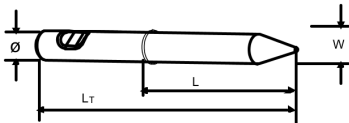
WT= 48.2 Kg

L=18.5 inch

LT=35.0 inch

W= Ø3.7 inch

WT= 106.3 lb



| Item | Part No. | Name | Qty | L |
|------|------------|-----------------------|-----|---|
| 1 | 3083342707 | MOIL POINT Tunnel | 1 | |
| 2 | | MOIL POINT | 1 | |
| 3 | 3315264200 | FRONT SHIELD | 1 | |
| 4 | 3315239710 | DUST COVER | 1 | |
| 5 | 3083342708 | CHISEL (cross) Tunnel | 1 | |
| 6 | | CHISEL (cross) | 1 | |
| 7 | 3315264200 | FRONT SHIELD | 1 | |
| 8 | 3315239710 | DUST COVER | 1 | |
| 9 | 3083342709 | BLUNT TOOL Tunnel | 1 | |
| 10 | | BLUNT TOOL | 1 | |
| 11 | 3315264200 | FRONT SHIELD | 1 | |
| 12 | 3315239710 | DUST COVER | 1 | |

Annex Environmental Product Compliance - REACH Declaration

NO EXPLODED VIEW
AVAILABLE
FOR THIS BOM

| Item | Part No. | Name | Qty | L |
|------|----------|--|-----|---|
| 26 | - | Pressure relief valve, complete, Part No. 3315365800 - CAS No. 7439-92-1 | - | |

Comments for Page: Environmental Product Compliance - REACH Declaration

EU REACH Candidate List substances present in product listed above.

Any unauthorized use or copying of the contents or any part thereof is prohibited.
This applies in particular to trademarks, model denominations, part numbers, and drawings.