

# SBU 220

---

## Spare parts list

### Hydraulic breaker

SBU 220 from s/n BES055535



# General information

This spare parts list applies to the following:

Part number	Description
8460030055	SBU 220

Use only authorized parts. Any damage or malfunction caused by the use of unauthorized parts is not covered by Warranty or Product Liability. Any unauthorized use or copying of the contents or any part thereof is prohibited. This applies in particular to trademarks, model denominations, part numbers, and drawings.

## Instructions for use

This spare parts list contains no safety regulations and is merely intended to assist in the ordering of spare parts.

For information about operating, servicing, or repairing, the relevant Safety and operating instructions must be consulted at all costs.

Please observe the safety instructions listed in the relevant Safety and operating instructions!

**Spare parts list**

Spare parts list ..... 1

Optional parts - Bushing oversize, complete ..... 4

Optional parts - Restrictor, complete ..... 7

**Tightening torque**

Tightening torque ..... 9

**Working tools**

Working tools ClassicLine ..... 11

Working tools ProLine ..... 13

**Accessories**

Hydraulic hoses ..... 15

Optional equipment ..... 17

**Kits**

Label kit ..... 19

Seal kit ..... 21

Kits and consumables ..... 23

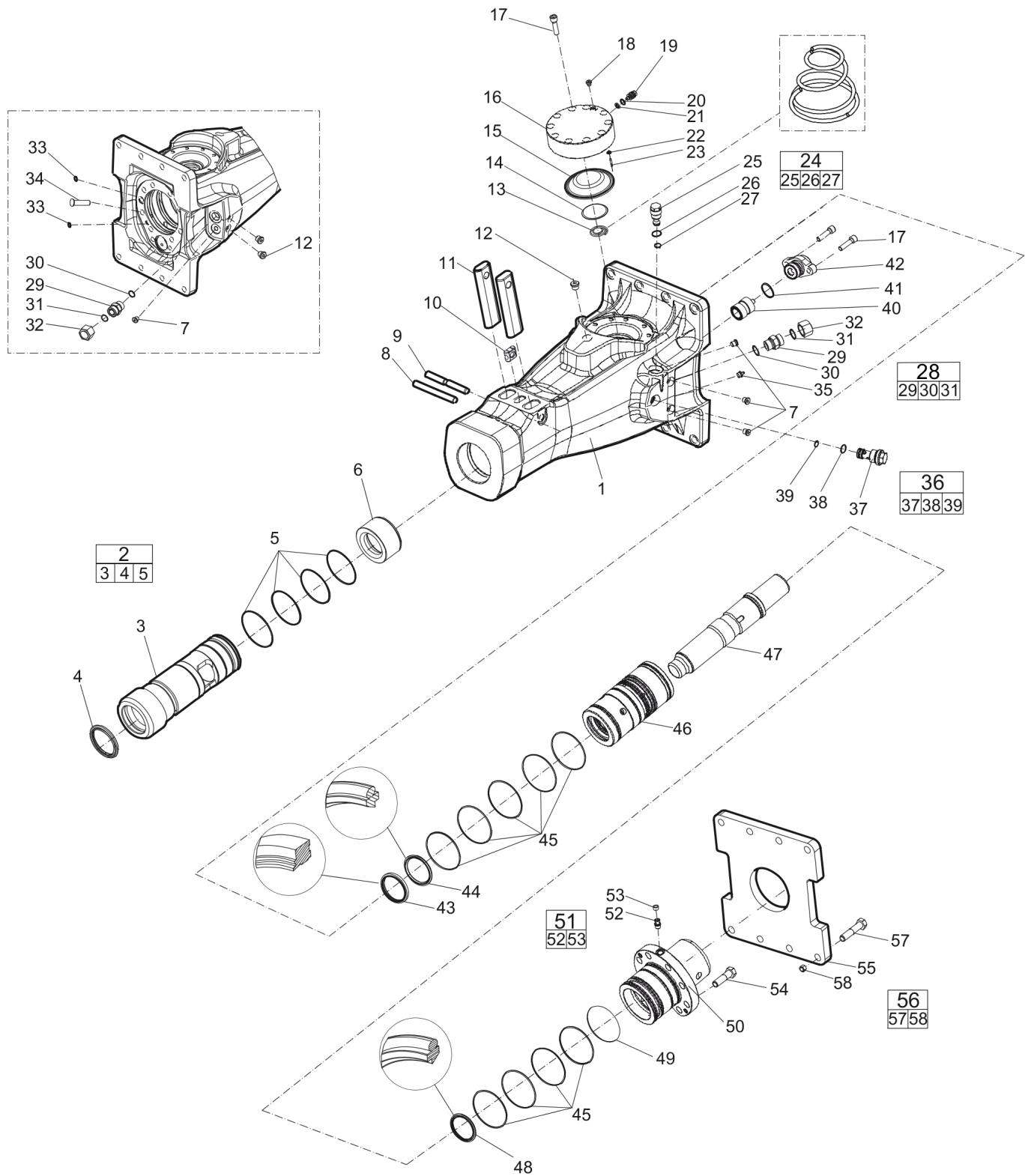
Lower hammer part kit ..... 25

Accumulator repair kit ..... 27

**Dimensions**

Dimensions (mm) ..... 29

## Spare parts list

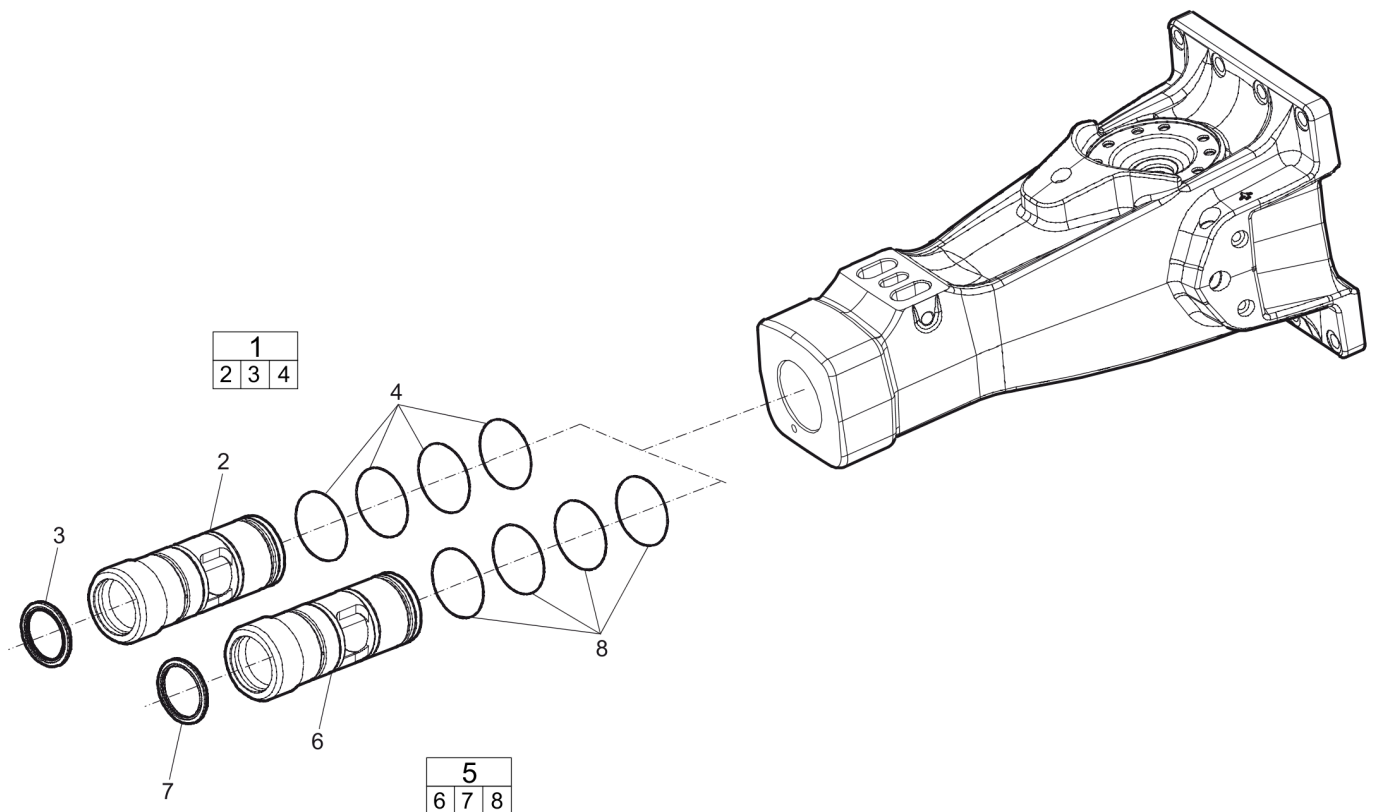


Item	Part No.	Name	Qty	Remarks	Reman No.	L
1		BREAKER BODY	1			
2	3315354080	BUSHING STANDARD, complete	1			
3	-	BUSHING, Ø 90 mm (Ø 3.54 in.)	1			
4	3315356200	SCRAPER RING	1			
5	0663210498	O-RING	4			
6	3315277800	STOP RING	1			
7	0686644207	PLUG	4			
8	0108169127	SPRING PIN, option	1			
9	3315135000	LOCK PIN	1			
10	3315141900	LOCK BUFFER	1			
11	3315134900	RETAINER BAR	2			
12	0686371801	PLUG	3			
13	3315359600	COIL SPRING	1			
14	3315359500	DIAPHRAGM SUPPORT	1			
15	3315289000	DIAPHRAGM	1			
16	3315359400	ACCUMULATOR HOUSE	1			
17	0211196534	HEX SOCK. SCREW	12			
18	0686371805	PLUG	1			
19	3315366000	VALVE	1			
20	0663212000	O-RING	1			
21	3115329002	SEAL RING	1			
22	0663211400	O-RING	1			
23	0101414000	PIN	1			
24	3315335000	PRESSURE RELIEF VALVE, complete	1			
25		PRESSURE RELIEF VALVE	1			
26	0663903201	O-RING	1			
27	0663905401	O-RING	1			
28	0580001845	NIPPLE, complete	1			
29	-	FITTING	1			
30	0664000004	SEAL RING	1			
31	0663210217	O-RING				
32	0570700010	CAP	2			
33	0665090014	SEAL RING	2			
34	3315301100	PLUG	1			
35	3363070299	GREASE NIPPLE	1			
36	3315369551	RESTRICTOR STANDARD, complete	1			

Item	Part No.	Name	Qty	Remarks	Reman No.	L
37	-	Restrictor, standard, Ø5.1 mm, Ø0.2 in.	1			
38	0663903201	O-RING	1			
39	0663905401	O-RING	1			
40	3315362400	CONTROL VALVE	1			
41	0663990033	SEAL	1			
42	3315362900	VALVE COVER	1			
43	0665909956	WIPER	1			
44	0665070130	PISTON ROD SEAL	1			
45	0663990036	SEAL RING	9			
46	3315359210	LINER	1			
47	3315359110	PISTON	1			
48	0665070129	PISTON ROD SEAL	1			
49	0663211516	O-RING	1			
50	3315359300	BACK HEAD	1			
51	3315244881	CHECK VALVE, complete	1			
52	-	CHECK VALVE	1			
53	3315280800	VALVE RUBBER	1			
54	3315431201	HEXAGON BOLT	8			
55	3315295100	BASE PLATE	1			
56	3315296490	BOLT KIT	1			
57	-	Screw, M16 x 75 mm 8.8	8			
58	-	NUT, M16	8			

This page intentionally left blank

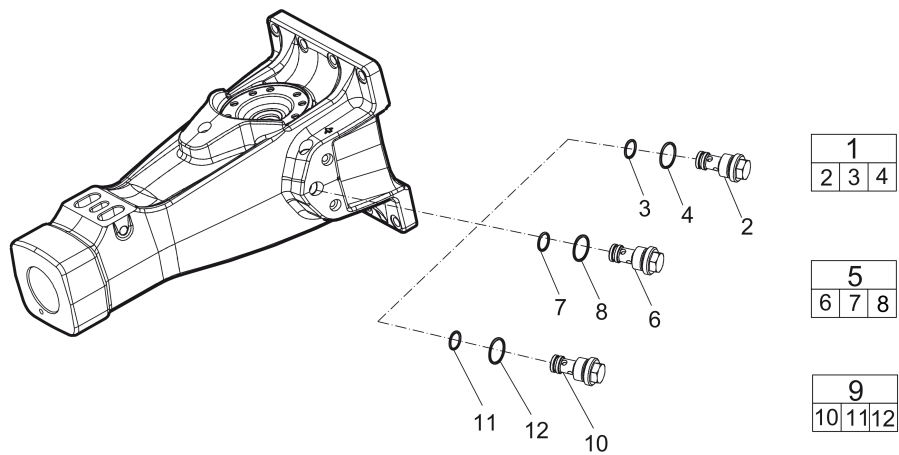
## Spare parts list





Item	Part No.	Name	Qty	Remarks	Reman No.	L
1	3315354060	BUSHING OVERSIZE, complete	1			
2	--	Bushing, Ø 91.5 mm , Ø 3.6 in.	1			
3	3315356200	SCRAPER RING	1			
4	0663210498	O-RING	4			
5	3315354063	BUSHING OVERSIZE, complete	1			
6	--	Bushing, Ø 93 mm, Ø 3.66 in.	1			
7	3315356200	SCRAPER RING	1			
8	0663210498	O-RING	4			

## Spare parts list



Item	Part No.	Name	Qty	Remarks	Reman No.	L
1	3315369540	RESTRICTOR, complete	1			
2	--	Restrictor, Ø 4.0 mm, Ø 0.16 in.	1			
3	0663903201	O-RING	1			
4	0663905401	O-RING	1			
5	3315369535	RESTRICTOR, complete	1			
6	--	Restrictor, Ø 4.5 mm, Ø 0.18 in.	1			
7	0663903201	O-RING	1			
8	0663905401	O-RING	1			
9	3315369555	RESTRICTOR, complete	1			
10	--	Restrictor, Ø 7.0 mm, Ø 0.28 in.	1			
11	0663903201	O-RING	1			
12	0663905401	O-RING	1			

Tightening torque

NO EXPLODED VIEW  
AVAILABLE  
FOR THIS BOM

Item	Part No.	Name	Qty	Remarks	Reman No.	L
7	-	PLUG - 30 Nm (22 ft lbf)	-			A
12		HEXAGON SOCKET PLUG - 80 Nm (59 ft lbf)	-			B
17		HEXAGON SOCKET PLUG - 120 Nm (89 ft lbf)	-			C
18		PLUG - 20 Nm (15 ft lbf)	-			
19	-	Charge valve - 20 Nm	-			
25	-	PRESSURE RELIEF VALVE - 80 Nm (59 ft lbf)	-			
29		FITTING - 120 Nm (89 ft lbf)	-			
35	-	GREASE NIPPLE - 30 Nm (22 ft lbf)	-			
52	-	CHECK VALVE - 30 Nm (22 ft lbf)	-			I
54	-	Hexagon head screw - 180 Nm	-			J
58	-	Nut - 170 Nm	-			

Comments for Page: Tightening torque

LOCTITE is a registered trademark of Henkel Corporation. 243 is a trademark of Henkel Corporation. Molykote is a registered trademark of Dow Corning Corporation.

(L)OCAL REMARKS

A | LOCTITE® 243™

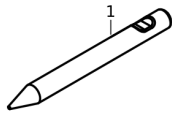
B | LOCTITE® 243™

C | Molykote®

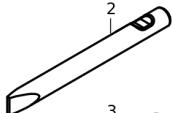
I | LOCTITE® 243™

J | Molykote®

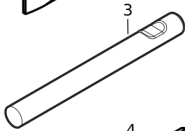
## Working tools



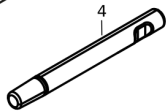
L=330 mm, LT=630 mm, Wt=13 kg  
L=12.99 inch, LT=24.8 inch, Wt= 28.66 lb



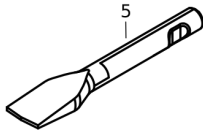
W= 65 mm, L=330 mm, LT=630 mm, Wt=14 kg  
W=2.56 inch, L= 12.99 inch, LT=24.8 inch, Wt=30.86 lb



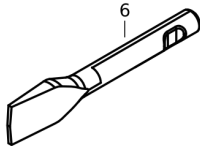
L=330 mm, LT=630 mm, Wt=15 kg  
L=12.99 inch, LT=24.8 inch, Wt=33.07 lb



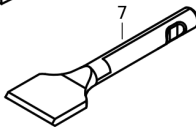
LT=630 mm, Wt=21 kg  
LT=24.8 inch, Wt=46.3 lb



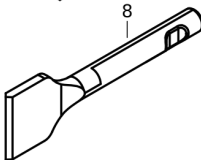
W=130 mm, L=350 mm, LT=650 mm, Wt=16 kg  
W=5.12 inch, L=13.78 inch, LT=25.6 inch, Wt=35.27 lb



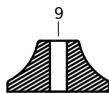
W=130 mm, L=350 mm, LT=650 mm, Wt=16kg  
W=5.12 inch, L=13.78 inch, LT=25.6 inch, Wt=35.27 lb



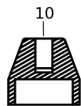
W=140 mm, L=350 mm, LT=650 mm, Wt=16 kg  
W=5.51 inch, L=13.78 inch, LT=25.6 inch, Wt=35.27 lb



W=140 mm, L=350 mm, LT=650 mm, Wt=16 kg  
W=5.51 inch, L=11.02 inch, LT=25.6 inch, Wt=35.27 lb



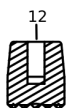
W= Ø300 mm, Wt=33 kg  
W= Ø11.81 inch, Wt=1.3 lb



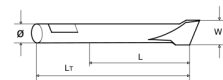
W=Ø150 mm, Wt=21 kg  
W= Ø5.9 inch, Wt=0.83 lb



W=Ø100 mm, Wt=9 kg  
W= Ø3.9 inch, Wt=0.35 lb

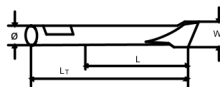
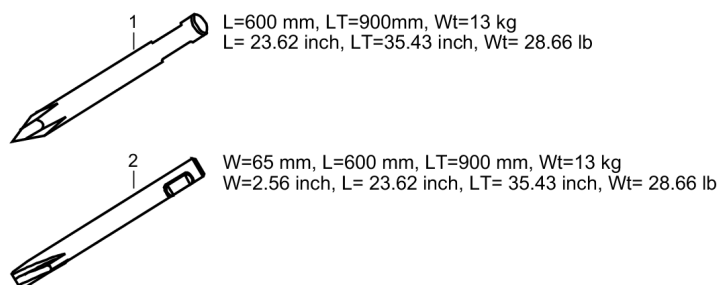


W=Ø130 , Wt=9,8 kg  
W= Ø5.1 inch, Wt=0.38 lb



Item	Part No.	Name	Qty	Remarks	Reman No.	L
1	3083316206	MOIL POINT	1			
2	3083316105	CHISEL (cross)	1			
3	3083341105	BLUNT TOOL	1			
4	3315370205	SHAFT	1			
5	3083316300	WIDE CHISEL (cross)	1			
6	3083316700	WIDE CHISEL (parallel)	1			
7	3083340946	ASPHALT CUTTER (cross)	1			
8	3083340947	ASPHALT CUTTER (parallel)	1			
9	3315370900	TAMPING PAD (square)	1			
10	3315371700	POST DRIVER PAD (round)	1			
11	3315372300	PILE DRIVER PAD (round)	1			
12	3315373000	BUSHING PAD (round)	1			

## Working tools





Item	Part No.	Name	Qty	Remarks	Reman No.	L
1	3363120263	MOIL POINT (X-Profile)	1			
2	3363120264	CHISEL (X-profile)	1			

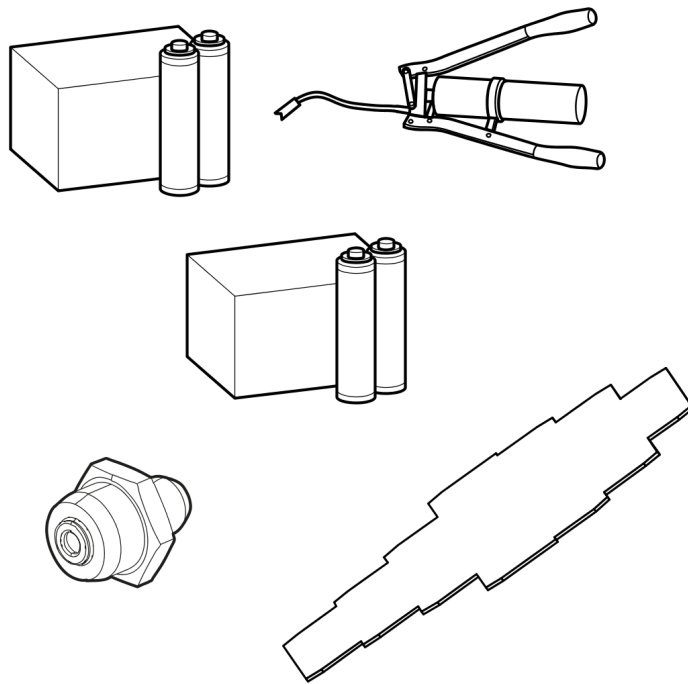
---

Accessories

NO EXPLODED VIEW  
AVAILABLE  
FOR THIS BOM

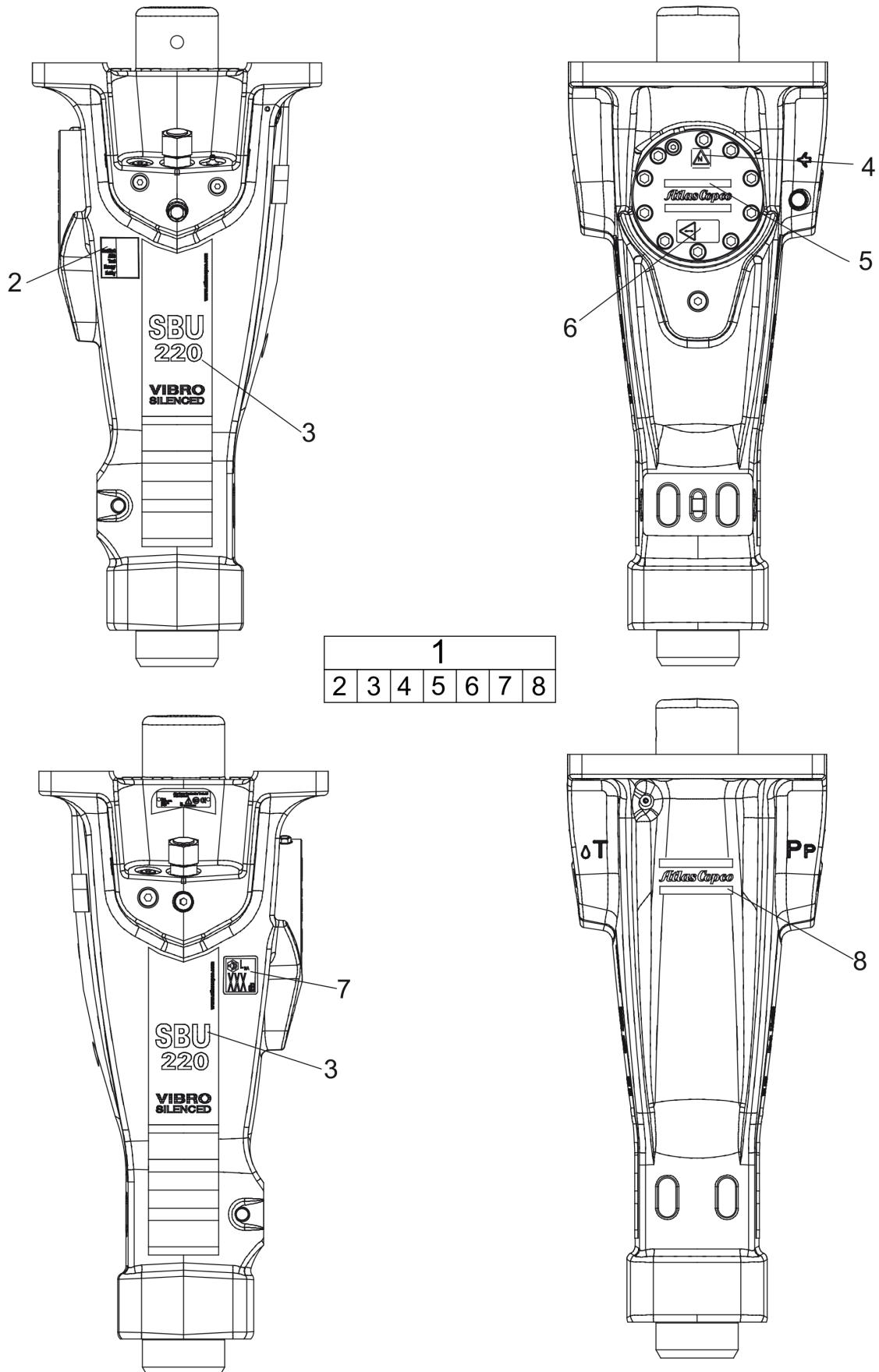
Item	Part No.	Name	Qty	Remarks	Reman No.	L
-	3360995717	HYDRAULIC HOSE, both ends 18 L (M26 x 1.5) length 1500 mm (59 in.)	2			
-	3362235159	HYDRAULIC HOSE, both ends 18 L (M26 x 1.5) length 2000 mm (79 in.)	2			
-	3363083313	HYDRAULIC HOSE, both ends 18 L (M26 x 1.5) length 2400 mm (95 in.)	2			
-	3363098019	ADDITIONAL FITTING KIT	1			

## Accessories



Item	Part No.	Name	Qty	Remarks	Reman No.	L
-	3315383190	CONTILUBE II MICRO	1			
-	0909107100	LUBRICAT.GUN	1			
-	3363122354	BIO CHISEL PASTE, 20 x 150 g (0.33 lbs)	1			
-	3363122355	BIO CHISEL PASTE CARTRIDGE FOR GREASE GUN, 12 x 400 g (0.88 lbs)	1			
-	3363122357	BIO CHISEL PASTE CONTAINER 15 kg (33 lbs)	1			
-	3363122358	BIO CHISEL PASTE CONTAINER 45 kg (99 lbs)	1			
-	3360920415	FILLING DEVICE, for accumulator	1			
-	3363094459	NIPPLE, for charging the accumulator	1			
-	3361329803	FILLING HOSE, for charging the accumulator	1			
-	3315353100	BUSHING WEAR CONTROLLER	1			

## Kits



Item	Part No.	Name	Qty	Remarks	Reman No.	L
1	3315373590	LABEL KIT	1			
2	--	AEM label	1			
3	--	PRODUCT LABEL	2			A
4	--	SAFETY LABEL	1			
5	--	PRODUCT LABEL	1			B
6	--	SAFETY LABEL	1			
7	--	Noise level label	1			
8	--	PRODUCT LABEL	1			C

Comments for Page: Label kit

(L)OCAL REMARKS

A | "SBU 220"

B | "Atlas Copco"

C | "Atlas Copco"

## Kits

NO EXPLODED VIEW  
AVAILABLE  
FOR THIS BOM



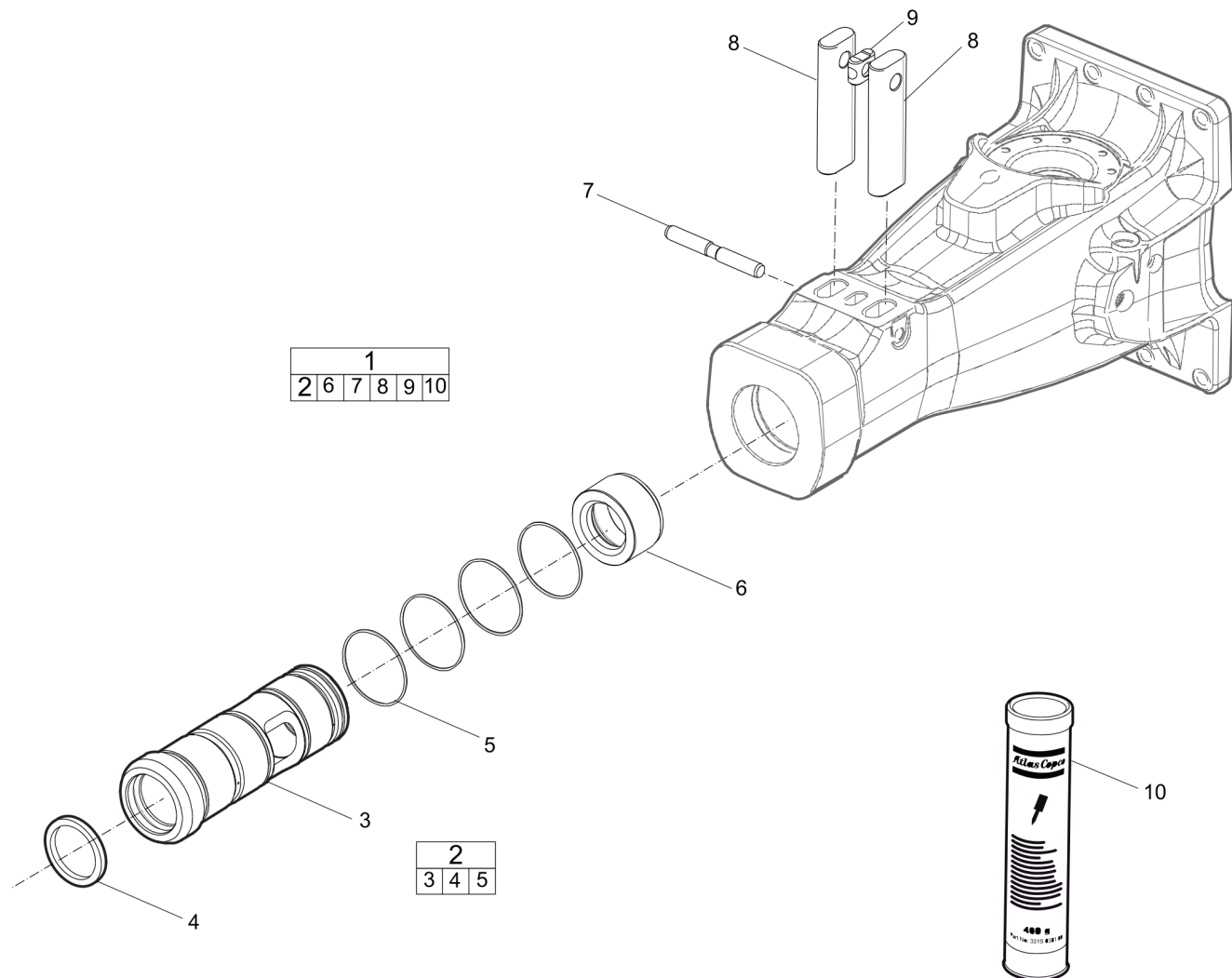
Item	Part No.	Name	Qty	Remarks	Reman No.	L
1	3315359090	SEAL KIT	1			
-	0663212000	O-RING	1			
-	3115329002	SEAL RING	1			
-	0663210498	O-RING	4			
-	0663211400	O-RING	1			
-	0663990036	SEAL RING	9			
-	0663990033	SEAL	1			
-	0663905401	O-RING	2			
-	0665090014	SEAL RING	2			
-	3315301100	PLUG	1			
-	0665909956	WIPER	1			
-	0665070129	PISTON ROD SEAL	1			
-	0665070130	PISTEN ROD SEAL	1			
-	3315280800	VALVE RUBBER	1			
-	0663903201	O-RING	2			
-	3315356200	SCRAPER RING	1			
-	0664000004	SEAL RING	2			
-	0663210217	O-RING	2			
-	0663211516	O-RING	1			

## Kits

<b>Service offers resume SBU220</b>	<b>Item</b>	<b>Description</b>
<b>Lubricants</b>	1	Chisel paste cartridge (for manual greasing)
	2	Chisel paste cartridge for ContiLube® II Micro
<b>Main wear part</b>	3	Impact ring
	4	Lock buffer
	5	Lock pin
	6	Retainer bar
	7	Wear bush
<b>Rebuild&amp;Overhaul kits</b>	8	Label kit
<b>Start-Up Kits</b>	9	Start-Up Kit Blunt
	10	Start-Up Kit Chisel (cross)
	11	Start-Up Kit Chisel (X-Profile)
	12	Start-Up Kit Moil point
	13	Start-Up Kit Moil point (X-Profile)
<b>Wear&amp;Repair Kits</b>	14	ACC umulator repair kit
	15	Lower breaker part kit
	16	Seal kit

Item	Part No.	Name	Qty	Remarks	Reman No.	L
1	3363094913	CHISEL PASTE CARTRIDGE FOR GREASE GUN, 12 x 400 g (12 x 0.88 lbs)	1			
2	3363106447	CHISEL PASTE CATRIDGE, 20 x 150 g (20 x 0.33 lb)	1			
3	3315277800	STOP RING	1			
4	3315141900	LOCK BUFFER	1			
5	3315135000	LOCK PIN	1			
6	3315134900	RETAINER BAR	1			
7	3315354080	BUSHING STANDARD, complete	1			
8	3315373590	LABEL KIT	1			
9	3382070052	Start-Up Kit Blunt	1			
10	3382070050	Start-Up Kit Chisel (cross)	1			
11	3382070051	Start-Up Kit Chisel (X-Profile)	1			
12	3382070048	Start-Up Kit Moil point	1			
13	3382070049	Start-Up Kit Moil point (X-Profile)	1			
14	3315359490	ACCUMULATOR REPAIR KIT	1			
15	3315352145	LOWER HAMMER PART KIT	1			
16	3315359090	SEAL KIT	1			

## Kits



Item	Part No.	Name	Qty	Remarks	Reman No.	L
1	3315352145	LOWER HAMMER PART KIT	1			
2	3315354080	BUSHING STANDARD, complete	1			
3		BUSHING	1			
4	3315356200	SCRAPER RING	1			
5	0663210498	O-RING	4			
6	3315277800	STOP RING	1			
7	3315135000	LOCK PIN	1			
8	3315134900	RETAINER BAR	2			
9	3315141900	LOCK BUFFER	1			
10	--	CHISEL PASTE CARTRIDGE	1			A

Comments for Page: Lower hammer part kit

(L)OCAL REMARKS

A | 400 g

0.88 lb

## Kits

NO EXPLODED VIEW  
AVAILABLE  
FOR THIS BOM

Item	Part No.	Name	Qty	Remarks	Reman No.	L
1	3315359490	ACCUMULATOR REPAIR KIT	1			
-	3315359600	COIL SPRING	1			
-	3315359500	DIAPHRAGM SUPPORT	1			
-	3315289000	DIAPHRAGM	1			
-	3115329002	SEAL RING	1			
-	0663212000	O-RING	1			
-	3315366000	VALVE	1			
-	0663211400	O-RING	1			
-	0101414000	PIN	1			
-	0211196534	HEX SOCK. SCREW	10			A
-	0686371805	PLUG	1			B

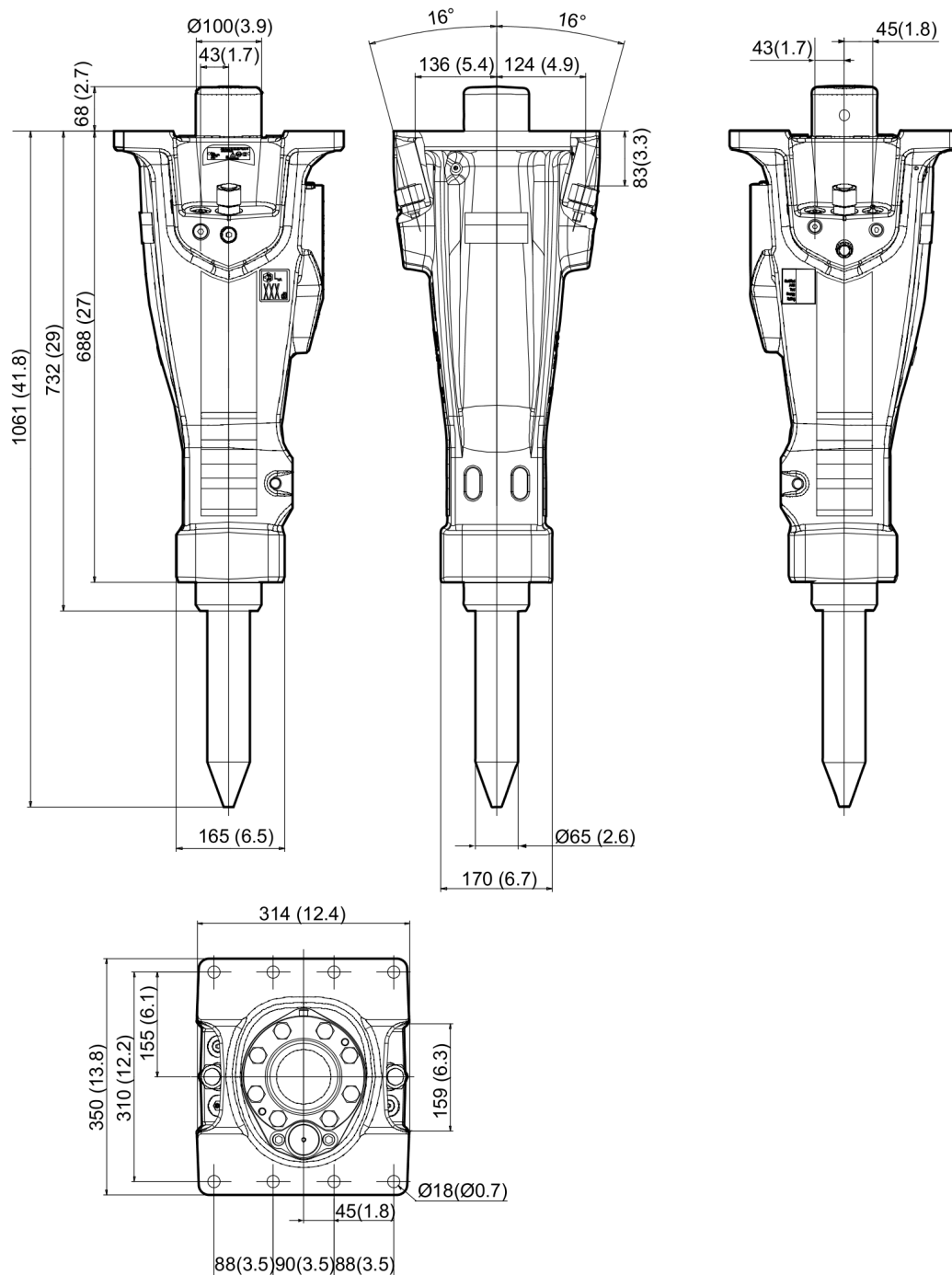
Comments for Page: Accumulator repair kit

(L)OCAL REMARKS

A | Screw with extra high fatigue strength.

B | VSTI R 1/8 - ED

## Dimensions





Any unauthorized use or copying of the contents or any part thereof is prohibited.  
This applies in particular to trademarks, model denominations, part numbers, and  
drawings.

