

SB 552

Spare parts list Hydraulic breaker

SB 552 from s/n BES002103



General information

This spare parts list applies to the following:

Part number	Description
8460030080	SB 552

Use only authorized parts. Any damage or malfunction caused by the use of unauthorized parts is not covered by Warranty or Product Liability. Any unauthorized use or copying of the contents or any part thereof is prohibited. This applies in particular to trademarks, model denominations, part numbers, and drawings.

Instructions for use

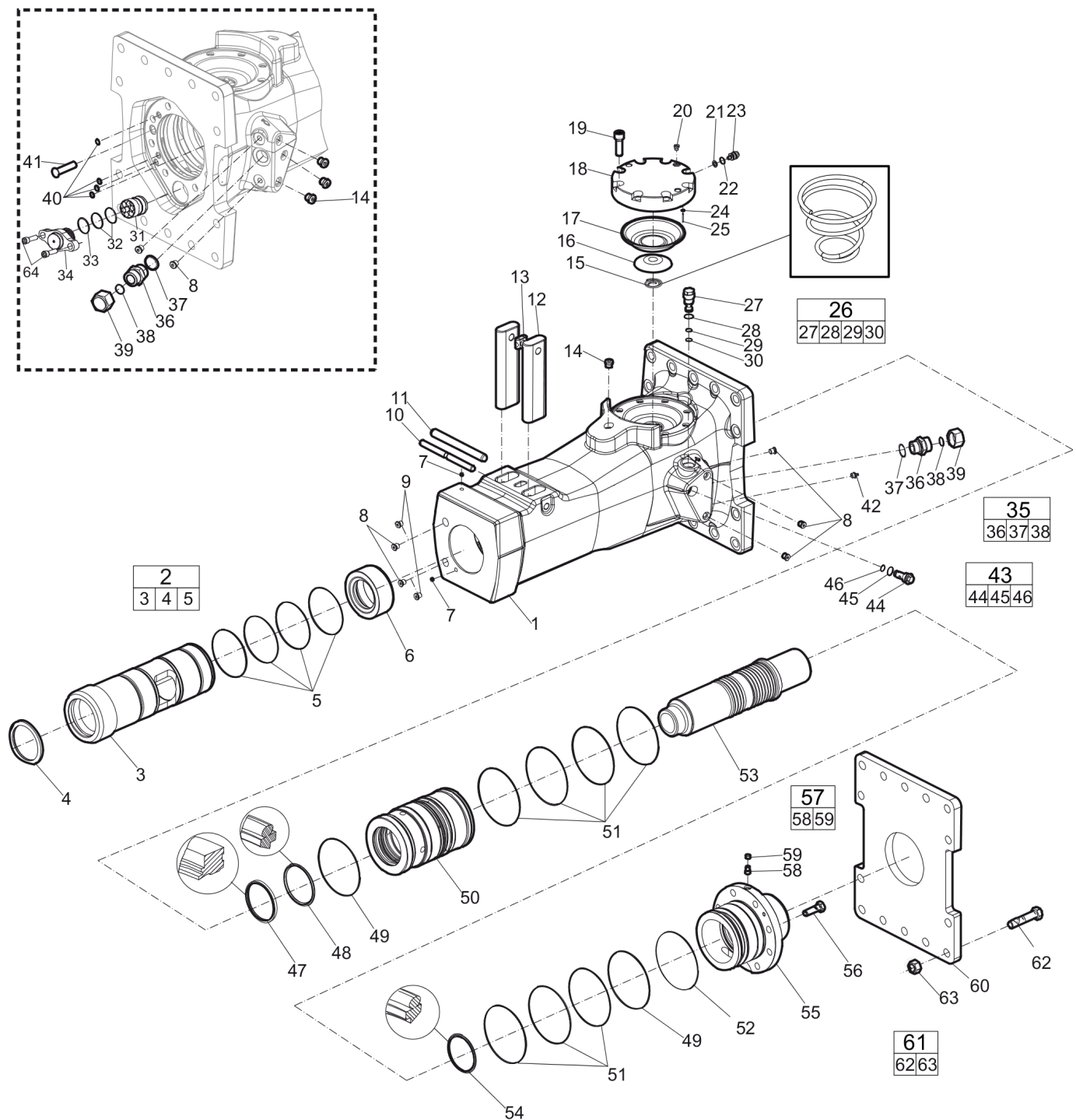
This spare parts list contains no safety regulations and is merely intended to assist in the ordering of spare parts.

For information about operating, servicing, or repairing, the relevant Safety and operating instructions must be consulted at all costs.

Please observe the safety instructions listed in the relevant Safety and operating instructions!

Contents

Spare parts list	
Spare part list	4
Optional parts - Bushing oversize, complete	9
Optional parts - Restrictor, complete	12
Tightening torque	
Tightening torque	14
Working tools	
Working tools SB 552	16
Accessories	
Optional equipment	19
Hydraulic hoses	23
Kits	
Label kit	26
Lower hammer part kit	28
Accumulator repair kit	30
Seal kit	32
Dimensions	
Dimensions (mm)	34

Spare parts list Spare part list

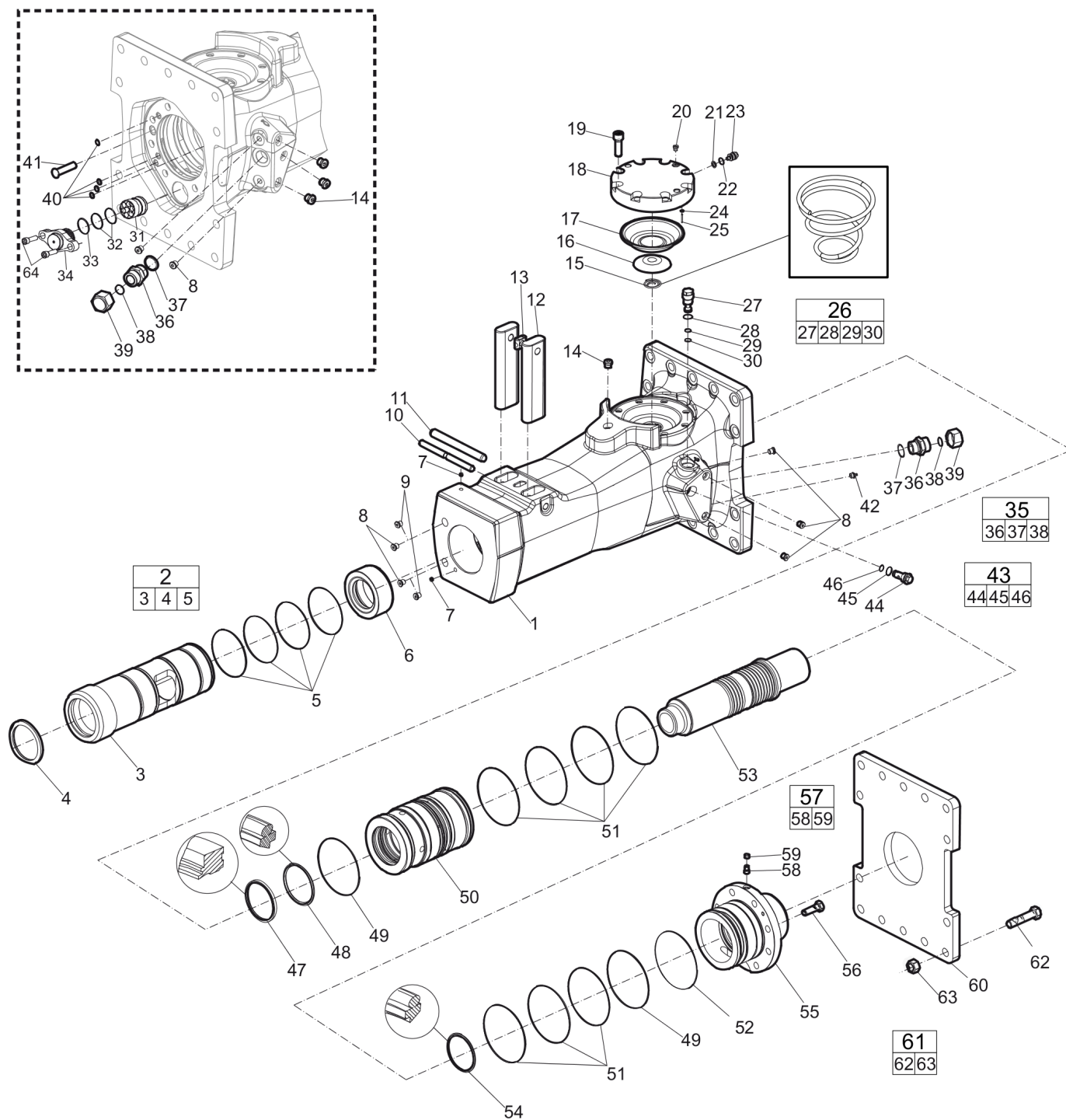
Refer to Parts Online for the most up to date information. The printed information might be outdated.

Fri Sep 19 08:51:48 UTC 2014

Item	Part No.	Name	Qty	L
1	-	Breaker body	1	
2	3315302980	Bushing, complete	1	A
3	--	Bushing	1	
4	3315303000	Scraper ring	1	
5	0663210823	O-ring, 119.5 x 3 mm, 4.70 x 0.12 in.	4	
6	3315302800	Stop ring	1	
7	0686100009	Plug, Ø10 mm, Ø0.39 in.	2	
8	0686644207	Plug	7	B
9	3315395200	Water nozzle	2	C
10	3315319100	Lock pin	1	
11	0108169129	Spring pin, option, 16 x 180 mm, 0.63 x 7.09 in.	1	D
12	3315305900	Tool retainer	2	
13	3315141900	Lock buffer	1	
14	0686371801	Plug	4	E
15	3315303500	Coil spring	1	
16	3315303201	Diaphragm support	1	
17	3315416300	Diaphragm	1	
18	3315303100	Diaphragm cover	1	
19	0211196544	Hexagon socket screw M16 x 50 mm Screw with extra high fatigue strength.	8	F
20	0686371805	Plug VSTI R 1/8-ED	1	G
21	3115329002	Seal ring 8 x 14 x 2.4 mm (90 shore), 0.31 x 0.55 x 0.09 in.	1	
22	0663212000	O-ring 13.3 x 2.4 mm (70 shore), 0.52 x 0.09 in.	1	
23	3315366000	Charge valve	1	
24	0663211400	O-ring 7.3 x 2.4 mm (90 shore), 0.28 x 0.09 in.	1	
25	0101414000	Parallel pin D4 x 25 mm, D4 x 0.98 in.	1	
26	3315365800	Pressure relief valve, complete	1	
27	--	Pressure relief valve	1	
28	9125621100	O-ring, 20.35 x 1.78 mm, 0.80 x 0.07 in. (90 shore)	1	
29	0663210421	O-ring, 14 x 1.78 mm, 0.55 x 0.07 in. (90 shore)	1	
30	0661200401	Back-up ring	1	
31	3315312100	Control valve	1	
32	0663990026	Seal ring, 51.3 x 54.3 x 3 mm, 2.02 x 2.14 x 0.12 in.	2	
33	0663211491	O-ring, 47.29 x 2.62 mm Polyuretan, 1.86 x 0.10 in.	1	
34	3315362820	Valve cover	1	
35	0570700005	Nipple, complete	1	H
36	--	Nipple	1	I
37	0664000005	Sealing ring, 29.70 x 35.70 x 1.50 mm, 1.17 x 1.41 x 0.06 in.	1	

Refer to Parts Online for the most up to date information. The printed information might be outdated.

Fri Sep 19 08:51:48 UTC 2014



Refer to Parts Online for the most up to date information. The printed information might be outdated.

Fri Sep 19 08:51:49 UTC 2014

Item	Part No.	Name	Qty	L
.38	0663211125	O-ring, 23.25 x 1.78 mm, 0.92 x 0.07 in.	1	
39	0570700011	Cap	2	
40	0665090014	Seal	4	
41	3315336700	Plug	1	
42	0544215300	Grease nipple	1	J
43	3315369655	Restrictor standard, complete	1	K
.44	--	Restrictor, standard, Ø7.7 mm, Ø0.3 in.	1	
.45	0663210421	O-ring, 14 x 1.78 mm, 0.55 x 0.07 in. (90 shore)	1	
.46	9125621100	O-ring, 20.35 x 1.78 mm, 0.80 x 0.07 in. (90 shore)	1	
47	0665909965	Wiper	1	
48	0665070134	Piston rod seal	1	
49	0663990027	Beaseal, 159.4 x 162.3 x 3 mm, 6.28 x 6.39 x 0.12 in.	2	
50	3315302500	Liner	1	
51	0663211303	O-ring, 149.5 x 3 mm, 5.89 x 0.12 in.	7	
52	0663211506	O-ring, 151.64 x 1.78 mm , 5.97 x 0.07 in. (70 shore)	1	
53	3315302400	Piston	1	
54	0665070133	Piston rod seal	1	
55	3315303410	Back head	1	
56	0147155503	Hexagon head screw, M20 x 70 mm 8.8 fzb	8	
57	3315244881	Check valve, complete	1	
.58	--	Check valve	1	
.59	3315280800	Valve rubber	1	
60	3315307700	Base plate with through borings	1	
61	3315323990	Bold kit	1	
.62	--	Screw	14	
.63	--	Nut, M20	14	
64	0211110467	Screw, M20 x 75	1	

Comments for Page: Spare part list

(L)OCAL REMARKS

A | For oversize bushings, see section "Bushing oversize, complete".

B | VSTI G 1/4 - ED

C | Option

D | Option

E | VSTI G 3/8 - ED

F | Screw with extra high fatigue strength.

G | VSTI G 1/8 - ED

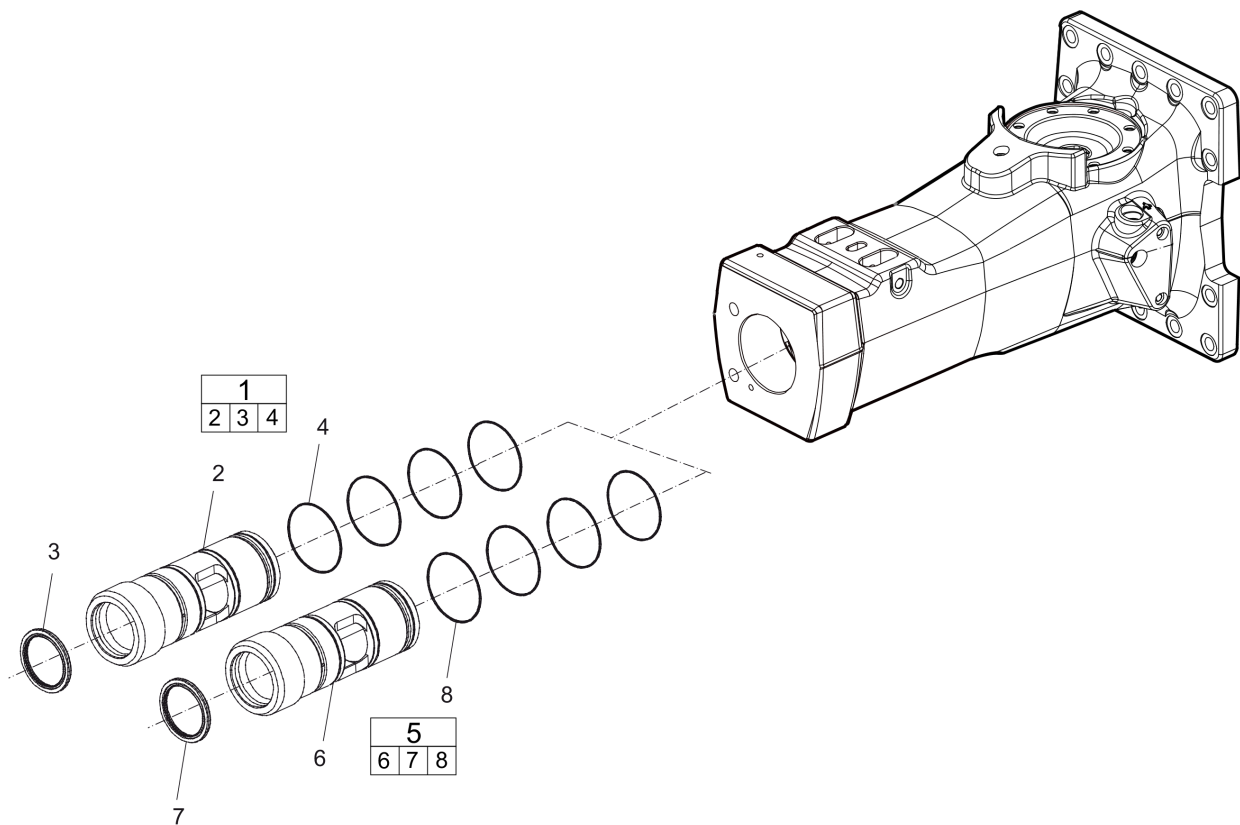
H | There are two "Nipple, complete" on the machine.

I | 1 7/16 " -12UN G1A

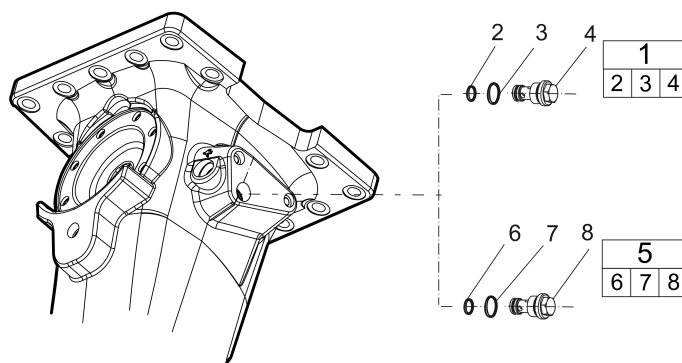
J | ISO 7-R 1/4

K | For more restrictors, see section "Restrictor, complete".

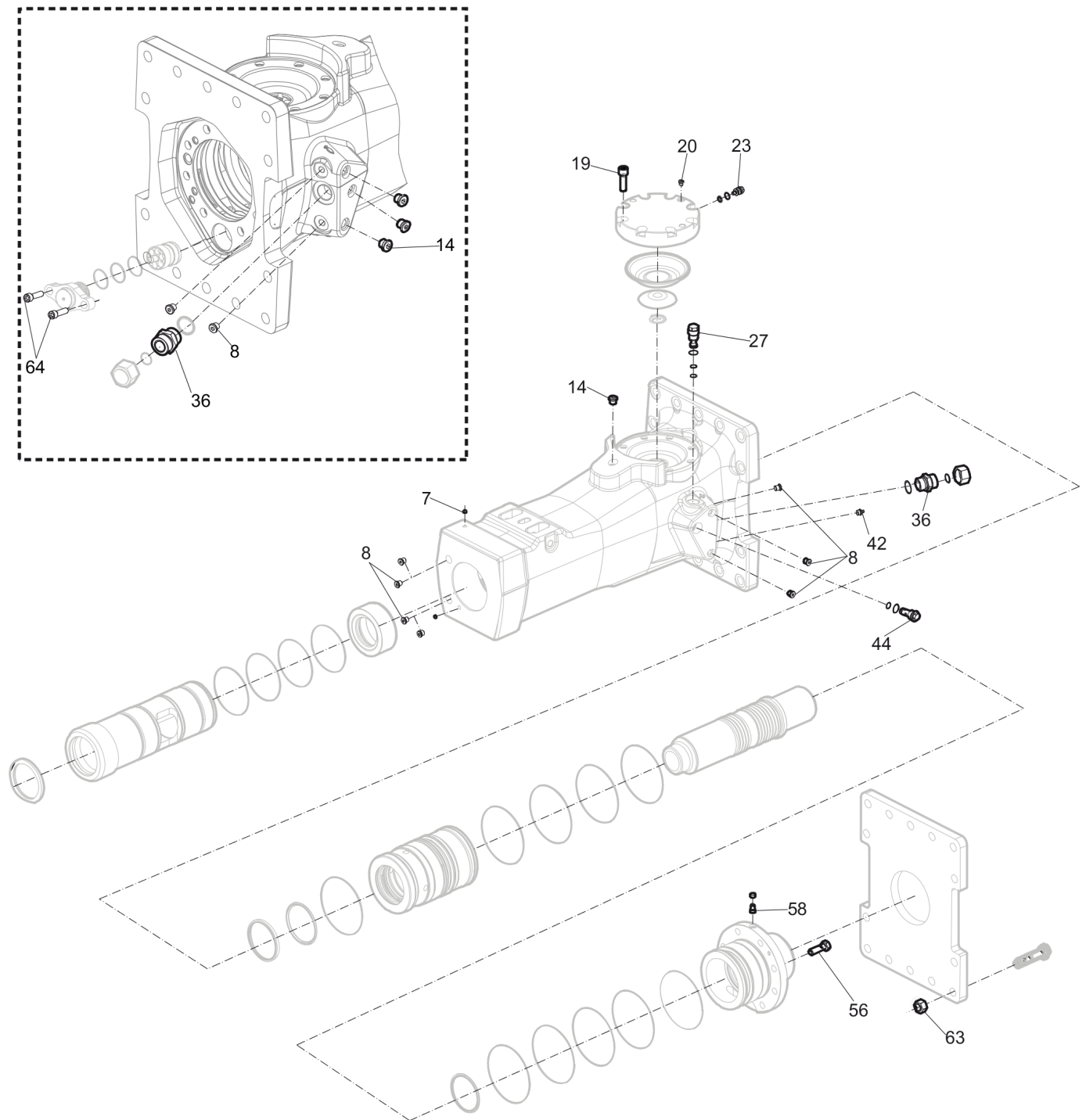
Page intentionally left blank

Spare parts list Optional parts - Bushing oversize, complete

Item	Part No.	Name	Qty	L
1	3315302960	Bushing oversize, complete	1	
2	--	Bushing, Ø 135.5 mm, Ø 5.33 in.	1	
3	3315303000	Scraper ring	1	
4	0663211508	O-ring, 119.5 x 3 mm, 4.70 x 0.12 in. (90 shore)	4	
5	3315302963	Bushing oversize, complete	1	
6	--	Bushing, Ø 137 mm, Ø 5.39 in.	1	
7	3315303000	Scraper ring	1	
8	0663211508	O-ring, 119.5 x 3 mm, 4.70 x 0.12 in. (90 shore)	4	

Spare parts list Optional parts - Restrictor, complete

Item	Part No.	Name	Qty	L
1	3315369635	Restrictor, complete	1	
.2	0663210421	O-ring, 14 x 1.78 mm, 0.55 x 0.07 in. (90 shore)	1	
.3	9125621100	O-ring, 20.35 x 1.78 mm, 0.80 x 0.07 in. (90 shore)	1	
.4	--	Restrictor, Ø5.4 mm, Ø0.21 in.	1	
5	3315369645	Restrictor, complete	1	
.6	0663210421	O-ring, 14 x 1.78 mm, 0.55 x 0.07 in. (90 shore)	1	
.7	9125621100	O-ring, 20.35 x 1.78 mm, 0.80 x 0.07 in. (90 shore)	1	
.8	--	Restrictor, Ø6.0 mm, Ø0.24 in.	1	

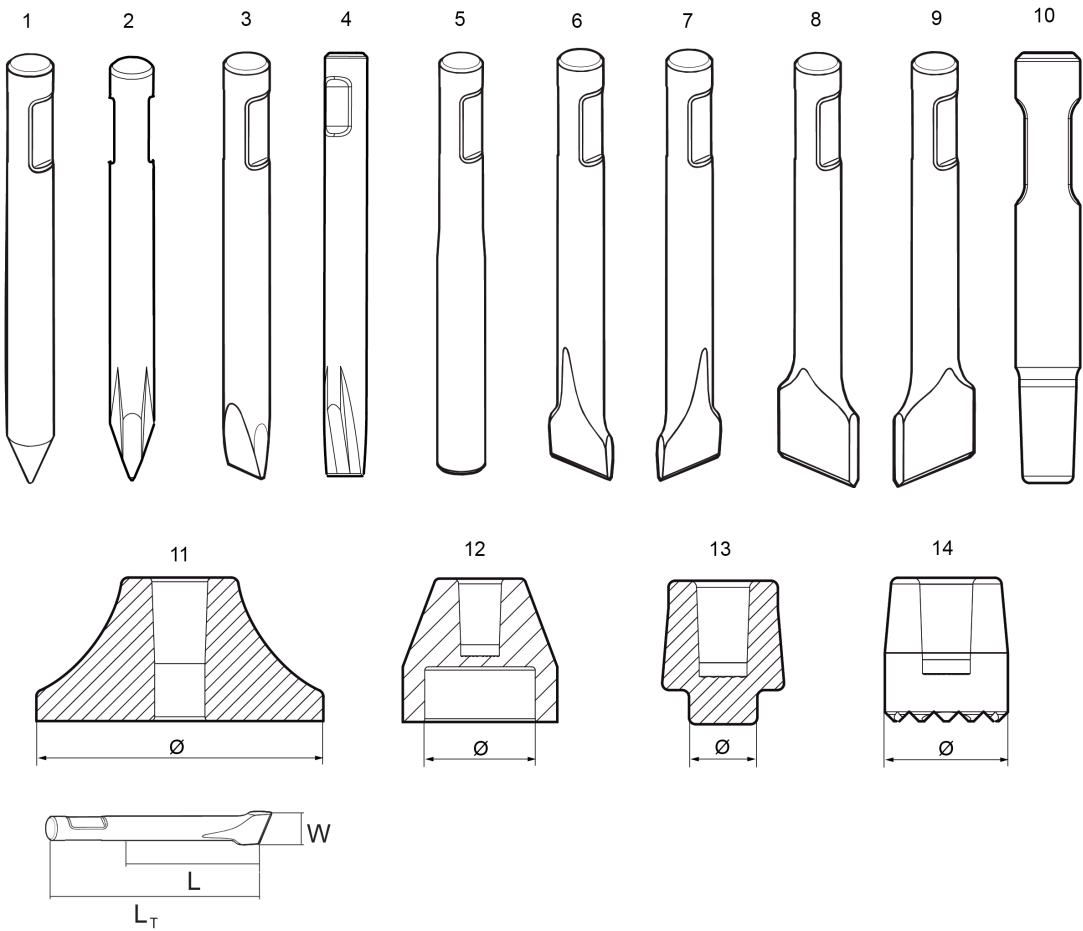
Tightening torque Tightening torque

Refer to Parts Online for the most up to date information. The printed information might be outdated.

Fri Sep 19 08:51:57 UTC 2014

Item	Part No.	Name	Qty	L
8	-	Plug - 30 Nm, use LOCTITE® 243™	-	
14	-	Plug - 80 Nm, use LOCTITE® 243™	-	
19	-	Hexagon socket screw - 300 Nm, use Molykote®	-	
20	-	Plug - 20 Nm	-	
23	-	Charge valve - 20 Nm	-	
27	-	Pressure relief valve - 80 Nm	-	
36	-	Nipple - 315 Nm	-	
42	-	Grease nipple - 30 Nm	-	
44	-	Restrictor, standard - 80 Nm	-	
56	-	Hexagon head screw - 315 Nm, use Molykote®	-	
58	-	Check valve - 30 Nm, use LOCTITE® 243™	-	
63	-	Nut - 400 Nm, use Molykote®	-	
64	-	Screw - 615 Nm, use Molykote®	-	

Working tools Working tools SB 552



Item	Part No.	Name	Qty	L
1	3083340905	Moil point	1	A
2	3363098258	Moil point (X-profile)	1	B
3	3083340906	Chisel (cross)	1	C
4	3363098259	Chisel (X-profile)	1	D
5	3083340907	Blunt tool	1	E
6	3083340924	Wide chisel (cross)	1	F
7	3083340925	Wide chisel (parallel)	1	G
8	3083340942	Asphalt cutter (cross)	1	H
9	3083340943	Asphalt cutter (parallel)	1	I
10	3315370500	Shaft	1	J
11	3315371200	Tamping pad (square)	1	K
12	3315372000	Post driver pad (round)	1	L
13	3315372600	Pile driver pad (round)	1	M
14	3315373200	Bushing pad (round)	1	N

Comments for Page: Working tools SB 552

(L)OCAL REMARKS

A | L=475 mm, LT=900 mm, Wt=49 kg

L=18.7 inch, LT=35.4 inch, Wt=108 lb

B | L=475 mm, LT=900 mm, Wt=46 kg

L=18.7 inch, LT=35.4 inch, Wt=101 lb

C | W= 100 mm, L=475 mm, LT=900 mm, Wt=51 kg

W=3.93 inch, L=18.7 inch, LT=35.4 inch, Wt=112 lb

D | W=100 mm, L=475 mm, LT=900 mm, Wt=48 kg

W=3.93 inch, L=18.7 inch, LT=35.4 inch, Wt=106 lb

E | L=475 mm, LT=900 mm, Wt=53 kg

L=18.7 inch, LT=35.4 inch, Wt=117 lb

F | W=180 mm, L=475 mm, LT=800 mm, Wt=52 kg

W=7.09 inch, L=18.7 inch, LT=31.5 inch, Wt=115 lb

G | W=180 mm, L=475 mm, LT=800 mm, Wt=52 kg

W=7.09 inch, L=18.7 inch, LT=31.5 inch, Wt=115 lb

H | W=200 mm, L=475 mm, LT=850 mm, Wt=52 kg

W=7.87 inch, L=18.7 inch, LT=33.5 inch, Wt=115 lb

I | W= 200 L=475 mm, LT=850 mm, Wt=39 kg

W=7.87 inch, L=18.7 inch, LT=33.5 inch, Wt=86 lb

J | LT=900 mm, Wt=53 kg

LT=35.4 inch, Wt=117 lb

K | W=Ø400 mm, , Wt= 80 kg

W=Ø15.75 inch, Wt= 176 kg

L | W=Ø200 mm, Wt= 33 kg

W=Ø7.87 inch, Wt= 73 lb

M | W= Ø150 mm, Wt=26 kg

W=Ø5.90 inch, Wt= 57 lb

N | W=Ø190 mm, Wt=30 kg

W=Ø7.48 inch, Wt= 66 lb

Page intentionally left blank

Accessories Optional equipment

**NO DRAWING
AVAILABLE
FOR THIS BOM**

Item	Part No.	Name	Qty	L
-	0909107100	Grease gun	1	A
-	3363094913	Chisel paste cartridge, 400 g x 12, 0.88 lb x 12	1	
-	3315383190	ContiLube II micro	1	
-	3315386780	Welding kit, universal	1	B
-	3315386280	Hose kit, universal	1	C
-	3363106447	Chisel paste cartridge, 150 g x 12, 0.33 lb x 12	1	
-	3363094669	Filling device	1	D
-	3315383980	Filling adapter	1	E
-	3363066411	Filling device	1	F
-	3362263900	Chisel paste container	1	G
-	3362263275	Chisel paste container	1	H
-	3360920415	Filling device for accumulator	1	
-	3363094459	Nipple, for charging the accumulator	1	
-	3361329803	Filling hose, for charging the accumulator	1	
-	3315353100	Bushing wear controller	1	

Comments for Page: Optional equipment

(L)OCAL REMARKS

A | For manual greasing with cartridge, 400 g (0.88 lb)

B | For ContiLube™ II micro

C | For ContiLube™ II micro

D | For the 150 g (0.33 lb) Chisel paste cartridges, to use in combination with Chisel paste container 15 kg (33 lb)

E | For the 150 g (0.33 lb)

Chisel paste cartridges, suitable with the filling device for 15 kg (33 lb) and 45 kg (99 lb)

F | For the 150 g (0.33 lb) Chisel paste cartridges, to use in combination with Chisel paste container 45 kg (99 lb)

G | 15 kg (33 lb)

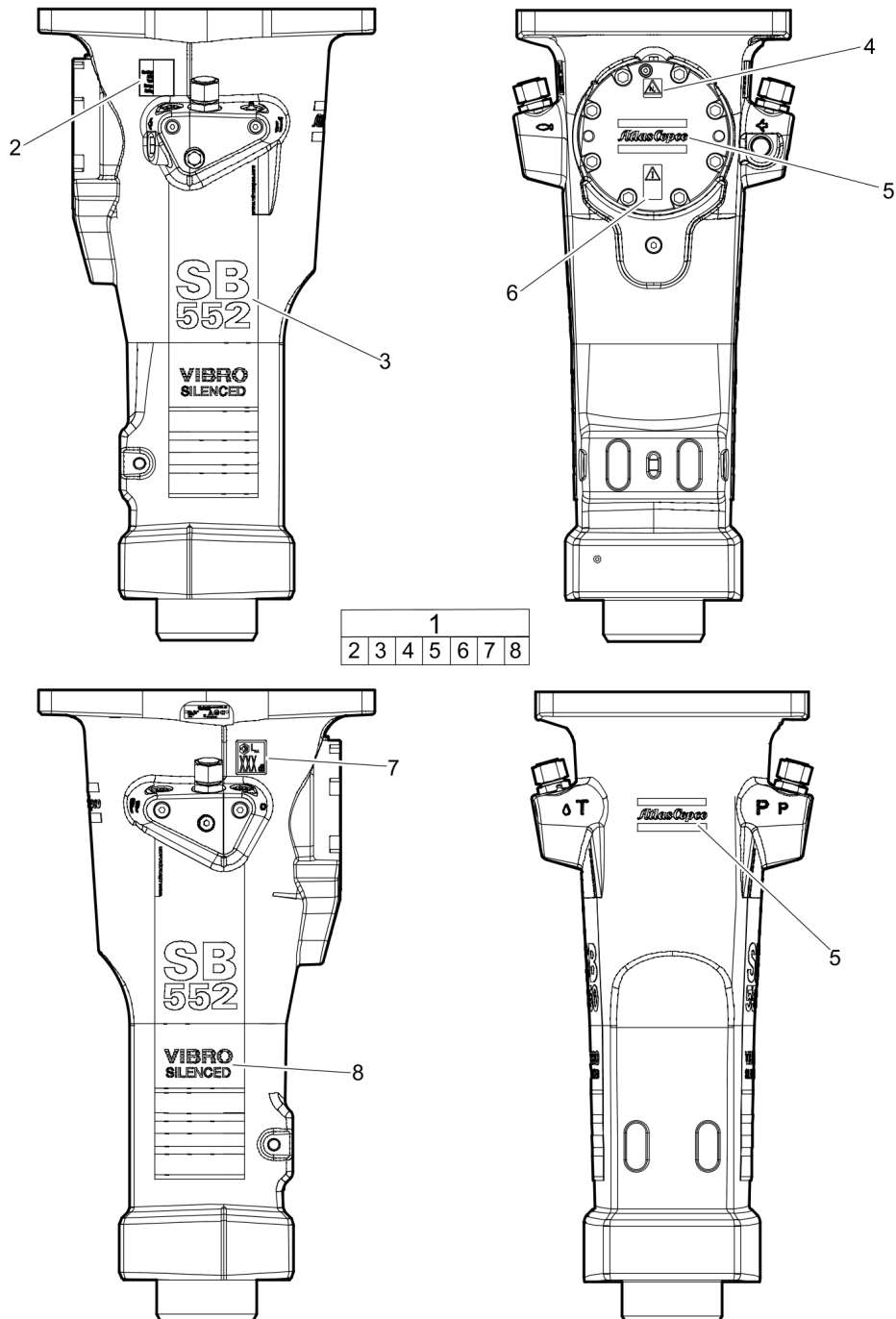
H | 45 kg (99 lb)

Page intentionally left blank

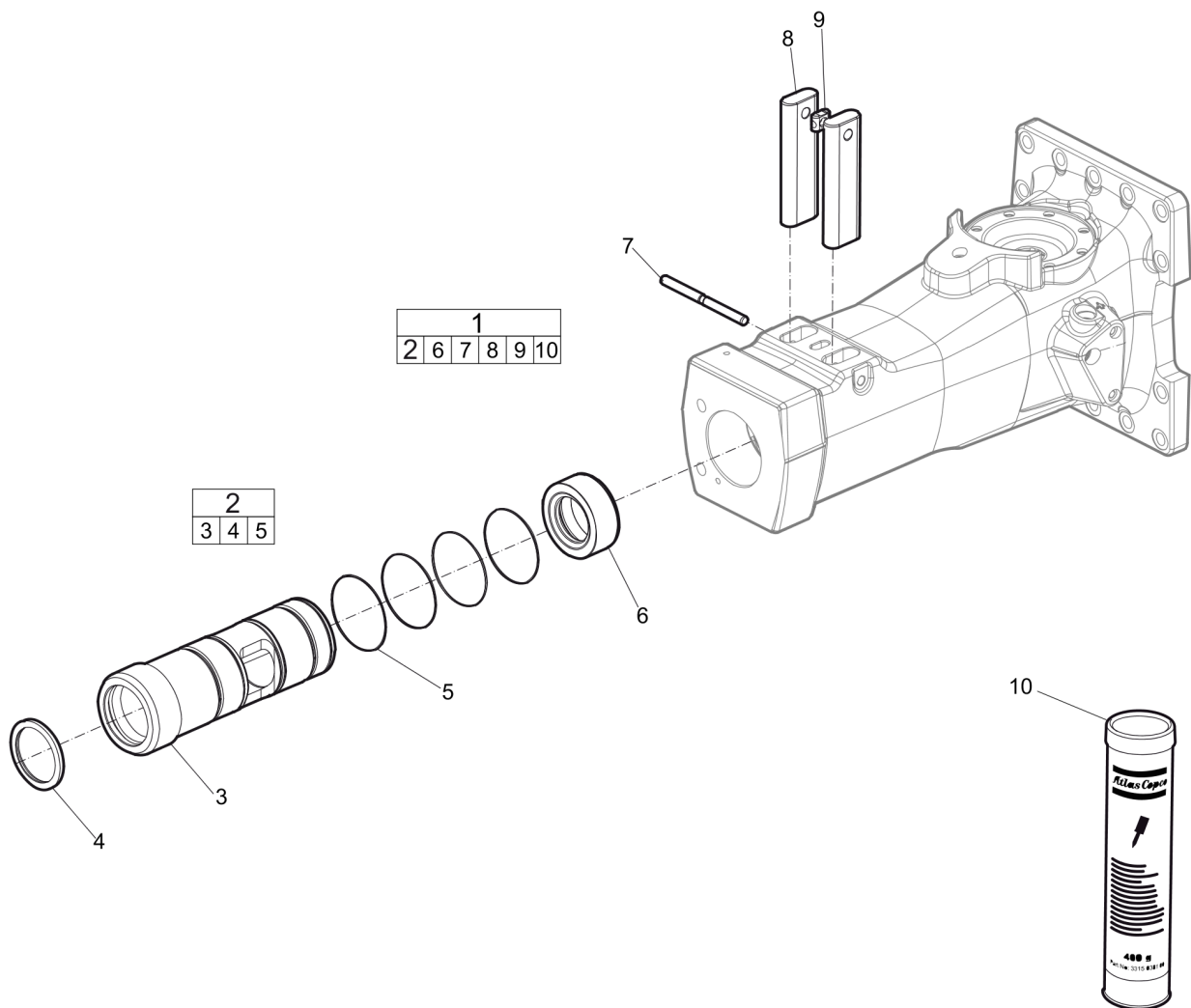
Accessories Hydraulic hoses

**NO DRAWING
AVAILABLE
FOR THIS BOM**

Item	Part No.	Name	Qty	L
-	3360332294	Hydraulic hose, I.D. 20 (0.79 in.), both ends M36 x 2 mm conical seal 24°, length 2,300 mm (90.5 in.)	2	
-	3363085947	Hydraulic hose, I.D. 20 (0.79 in.), both ends M36 x 2 mm conical seal 24°, length 2,800 mm (110.2 in.)	2	
-	3363094964	Additional fitting kit (needed to fit two hoses to the hydraulic breaker)	1	

Kits Label kit

Item	Part No.	Name	Qty	L
1	3315321590	Label kit	1	
.2	--	AEM sign	1	
.3	--	Product label "SB 552"	1	
.4	--	Safety label	1	
.5	--	Product label "Atlas Copco"	2	
.6	--	Safety label	1	
.7	--	Noise level label	1	
.8	--	Label "Vibro Silenced"	1	

Kits Lower hammer part kit

Item	Part No.	Name	Qty	L
1	3315352195	Lower hammer part kit	1	
2	3315302980	Bushing, complete	1	
3	---	Bushing	1	
4	3315303000	Scraper ring	1	
5	0663210823	O-ring, 119.5 x 3 mm, 4.70 x 0.12 in.	4	
6	3315302800	Stop ring	1	
7	3315319100	Lock pin	1	
8	3315305900	Tool retainer	2	
9	3315141900	Lock buffer	1	
10	--	Chisel paste cartridge, 400 g	1	

Kits Accumulator repair kit

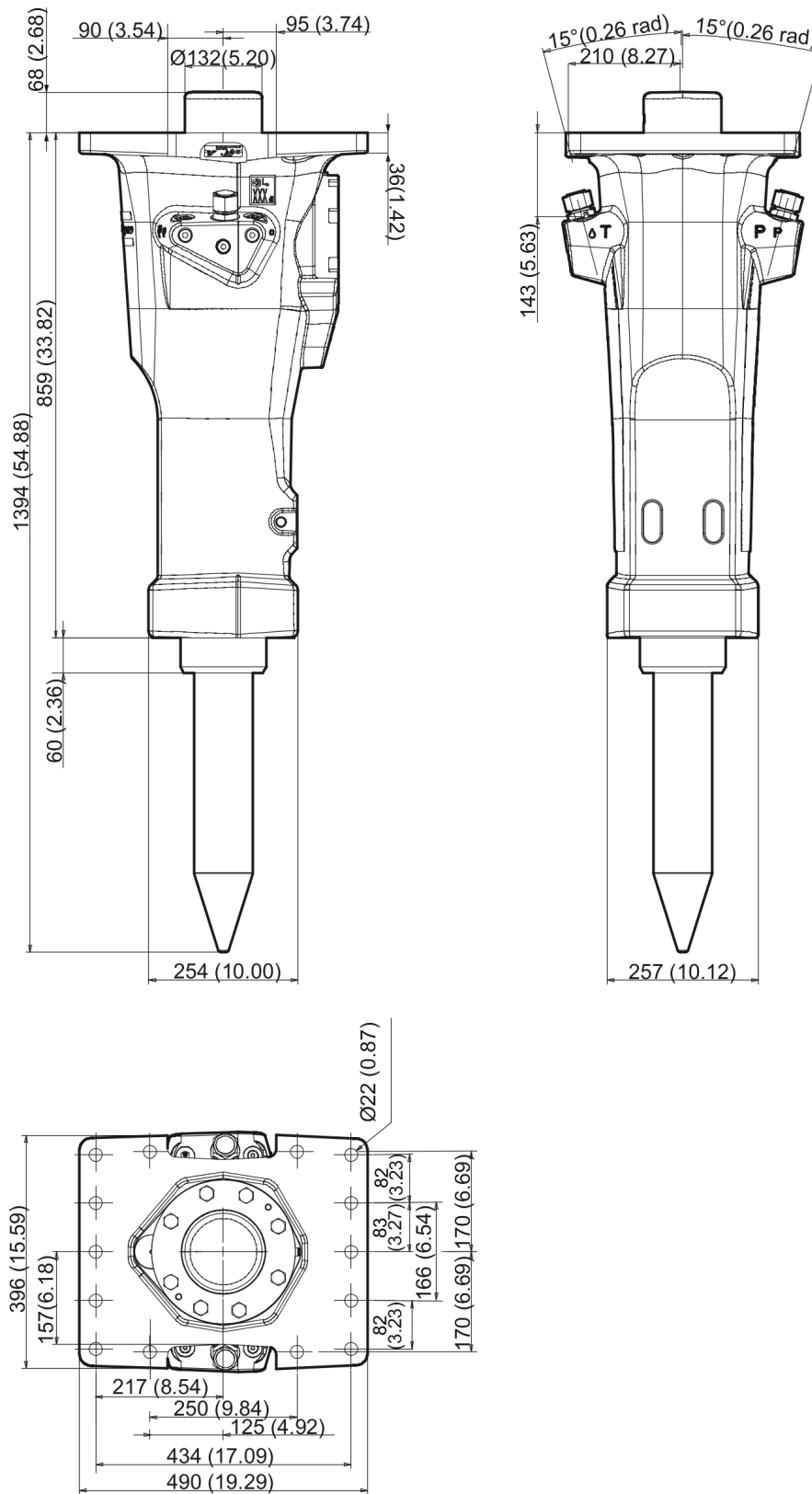
**NO DRAWING
AVAILABLE
FOR THIS BOM**

Item	Part No.	Name	Qty	L
17	3315303190	Accumulator repair kit	1	
.18	3315303500	Coil spring	1	
.19	3315303201	Diaphragm support	1	
.20	3315416300	Diaphragm	1	
.22	0211196544	Hexagon socket screw M16 x 50 mm Screw with extra high fatigue strength.	8	
.23	0686371805	Plug VSTI R 1/8-ED	1	
.24	3115329002	Seal ring 8 x 14 x 2.4 mm (90 shore), 0.31 x 0.55 x 0.09 in.	1	
.25	0663212000	O-ring 13.3 x 2.4 mm (70 shore), 0.52 x 0.09 in.	1	
.26	3315366000	Charge valve	1	
.27	0101414000	Parallel pin D4 x 25 mm, D4 x 0.98 in.	1	
.28	0663211400	O-ring 7.3 x 2.4 mm (90 shore), 0.28 x 0.09 in.	1	

A collection of 14 hand-drawn, irregular oval shapes, resembling stones or pebbles, scattered across a white background. One shape on the left is a cylinder-like form with a flat circular end. The shapes are drawn with simple black outlines, some with a slight double-line effect to give them a three-dimensional appearance. They are arranged in a loose, scattered pattern, with some overlapping slightly. The overall style is minimalist and sketchy.

Item	Part No.	Name	Qty	L
1	3315303690	Seal kit	1	
.2	0663210823	O-ring, 119.5 x 3 mm, 4.70 x 0.12 in.	4	
.3	0661100024	Seal washer	1	
.4	3115329002	Seal ring 8 x 14 x 2.4 mm (90 shore), 0.31 x 0.55 x 0.09 in.	1	
.5	0663212000	O-ring 13.3 x 2.4 mm (70 shore), 0.52 x 0.09 in.	1	
.6	0663211400	O-ring 7.3 x 2.4 mm (90 shore), 0.28 x 0.09 in.	1	
.7	9125621100	O-ring, 20.35 x 1.78 mm, 0.80 x 0.07 in. (90 shore)	2	
.8	0663211491	O-ring, 47.29 x 2.62 mm Polyuretan, 1.86 x 0.10 in.	1	
.9	0661200401	Back-up ring	1	
.10	0663990026	Seal ring, 51.3 x 54.3 x 3 mm, 2.02 x 2.14 x 0.12 in.	2	
.11	0664000005	Sealing ring, 29.70 x 35.70 x 1.50 mm, 1.17 x 1.41 x 0.06 in.	2	
.12	0663211125	O-ring, 23.25 x 1.78 mm, 0.92 x 0.07 in.	2	
.13	0665090014	Seal	4	
.14	3315336700	Plug	1	
.15	0665909965	Wiper	1	
.16	0665070134	Piston rod seal	1	
.17	0663990027	Beaseal, 159.4 x 162.3 x 3 mm, 6.28 x 6.39 x 0.12 in.	2	
.18	0665211303	O-ring, 149.5 x 3 mm, 5.89 x 0.12 in.	7	
.19	0665070133	Piston rod seal	1	
.20	3315280800	Valve rubber	1	
.21	0663210421	O-ring, 14 x 1.78 mm, 0.55 x 0.07 in. (90 shore)	2	
.22	0663211506	O-ring, 151.64 x 1.78 mm , 5.97 x 0.07 in. (70 shore)	1	
.23	3315303000	Scraper ring	1	

Dimensions Dimensions (mm)



Any unauthorized use or copying of the contents or any part thereof is prohibited.
This applies in particular to trademarks, model denominations, part numbers, and drawings.

