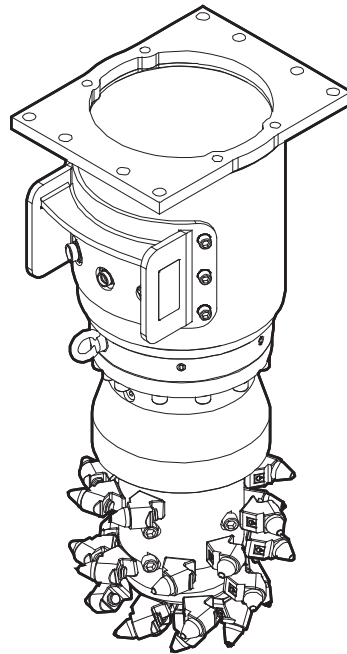


# ERL 700

---

## Spare parts list Longitudinal Drum Cutters

ERL 700 s/n DGR464183 -



# General information

This spare parts list applies to the following:

## Description

ERL 700 - 1  
ERL 700 - 3

Use only authorized parts. Any damage or malfunction caused by the use of unauthorized parts is not covered by Warranty or Product Liability. Any unauthorized use or copying of the contents or any part thereof is prohibited. This applies in particular to trademarks, model denominations, part numbers, and drawings.

## Instructions for use

This spare parts list contains no safety regulations and is merely intended to assist in the ordering of spare parts.

For information about operating, servicing, or repairing, the relevant Safety and operating instructions must be consulted at all costs.

Please observe the safety instructions listed in the relevant Safety and operating instructions!

**Service, repair and wear part kits**

Label kit .....	1
-----------------	---

**Mechanical**

Longitudinal Drum Cutter, part 1 .....	3
Longitudinal Drum Cutter, part 2 .....	6
Longitudinal Drum Cutter, part 3 .....	9
Tightening torques .....	12
Dimensions .....	15

**Options / accessories**

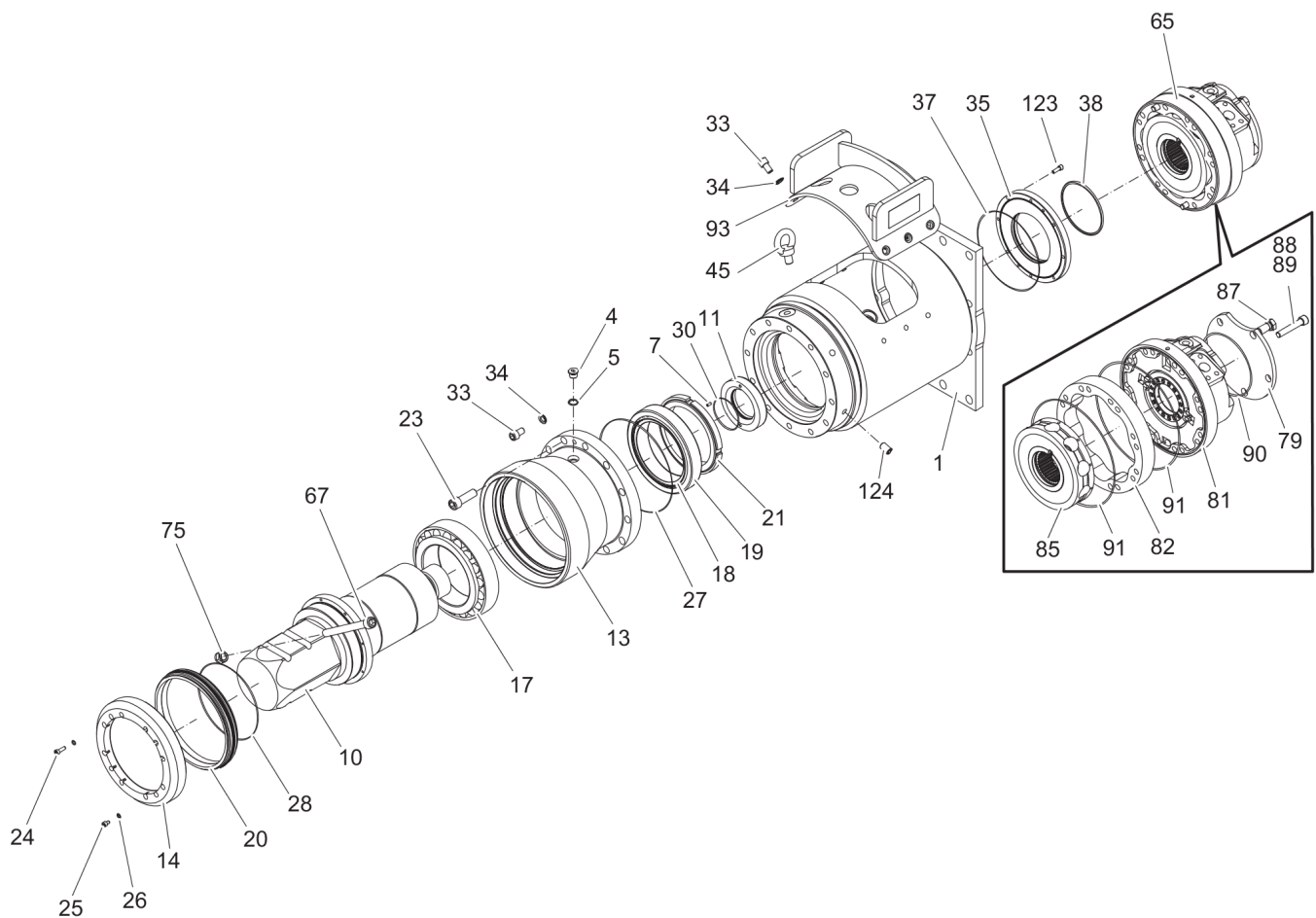
Picks and retainers kits .....	16
Tools for picks .....	19
Optional equipment .....	21

Service, repair and wear part kits Label kit

NO EXPLODED VIEW  
AVAILABLE  
FOR THIS BOM

Item	Part No.	Name	Qty	L
KIT	3311005760	Label kit	1	

## Mechanical Longitudinal Drum Cutter, part 1



Refer to the DocMine web page for most up-to-date information. The printed information might be outdated.

Fri Aug 12 05:11:53 UTC 2022

Item	Part No.	Name	Qty	L
1	3311004226	Intermediate bracket	1	
4	3311000631	Plug	2	
5	3311001071	Seal	2	
7	3311003275	Spring pin	2	
10	3311003363	Output shaft	1	
11	3311003366	Distance washer	1	
13	3311002369	Bearing flange	1	
14	3311003417	Sealing cover	1	
17	3311000611	Tapered roller bearing	1	
18	3311000586	Inner race (tapered roller bearing)	1	
19	3311000588	Outer race (tapered roller bearing)	1	
20	3311000589	Seal	1	
21	3311004173	Shaft nut	1	
23	3311001842	Allen screw	12	
24	3311000628	Allen screw	8	
25	3311000591	Allen screw	4	
26	3311000592	Usit-ring	12	
27	3311000593	O-ring	1	
28	3311000594	O-ring	1	
30	3311003368	O-ring	1	
33	3311000743	Allen screw	8	
34	3311000533	Pair of lock washers	8	
35	3311003367	Sealing cover	1	
37	3311003369	O-ring	1	
38	3311000692	Seal	1	
45	3311002145	Eye bolt	1	
65	3311005574	Motor complete	1	A
65	3311001277	Motor complete	1	B
67	3311001686	Allen screw	4	
75	3311000510	Hexagonal nut	4	
79	3311000143	Cover (motor)	1	
81	3311000277	Distribution housing (motor)	1	
82	3311000275	Cam ring	1	A
82	3311000273	Cam ring	1	B
85	3311000276	Cylinder block	1	
87	3311000502	Hexagon head screw	5	
88	3311000765	Allen screw	14	

Refer to the DocMine web page for most up-to-date information. The printed information might be outdated.

Fri Aug 12 05:11:53 UTC 2022

Item	Part No.	Name	Qty	L
89	3311000766	Allen screw	2	
90	3311000537	O-ring	1	
91	3311000581	O-ring	2	
93	3311004228	Cover	1	
123	3311000630	Allen screw	8	
124	3311003512	Bolt	5	

Comments for Page: Longitudinal Drum Cutter, part 1

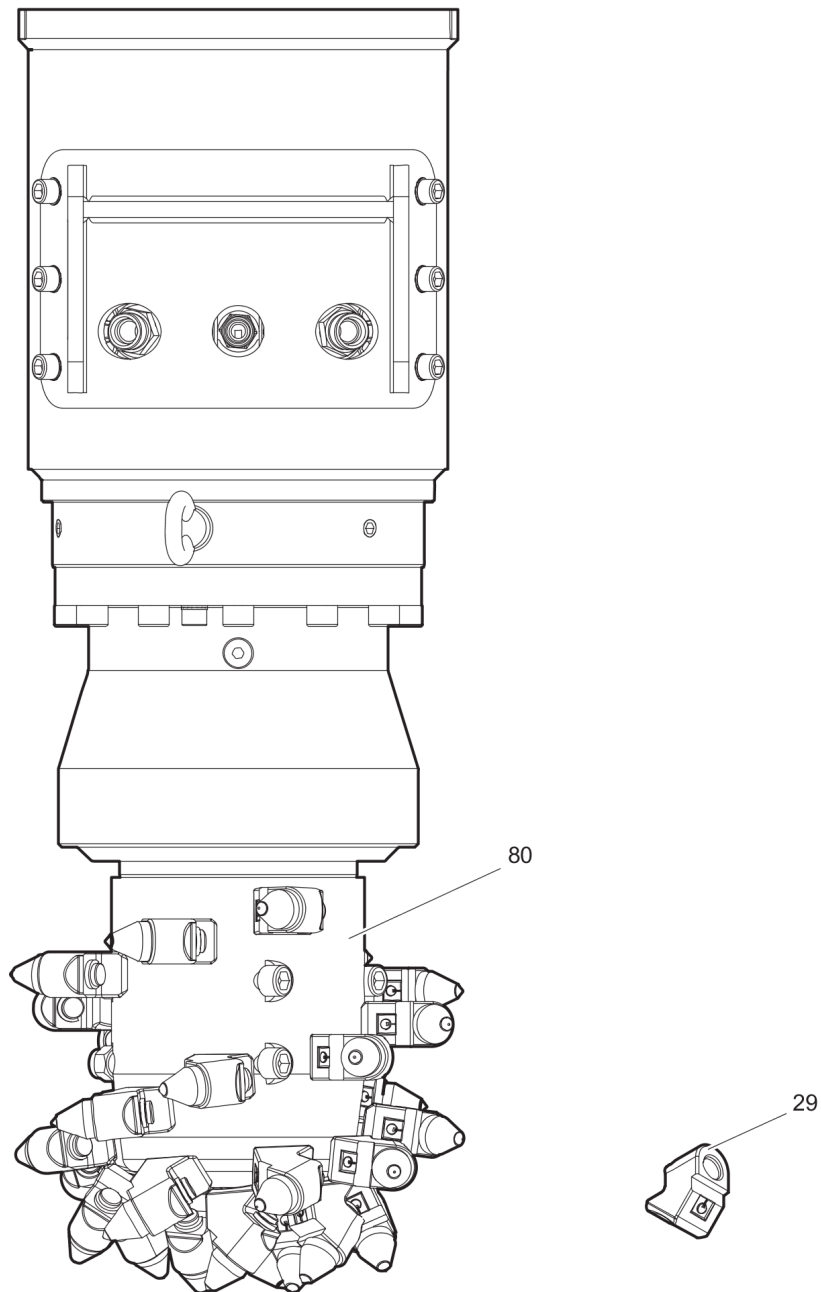
A | ERL 700 - 1

B | ERL 700 - 3



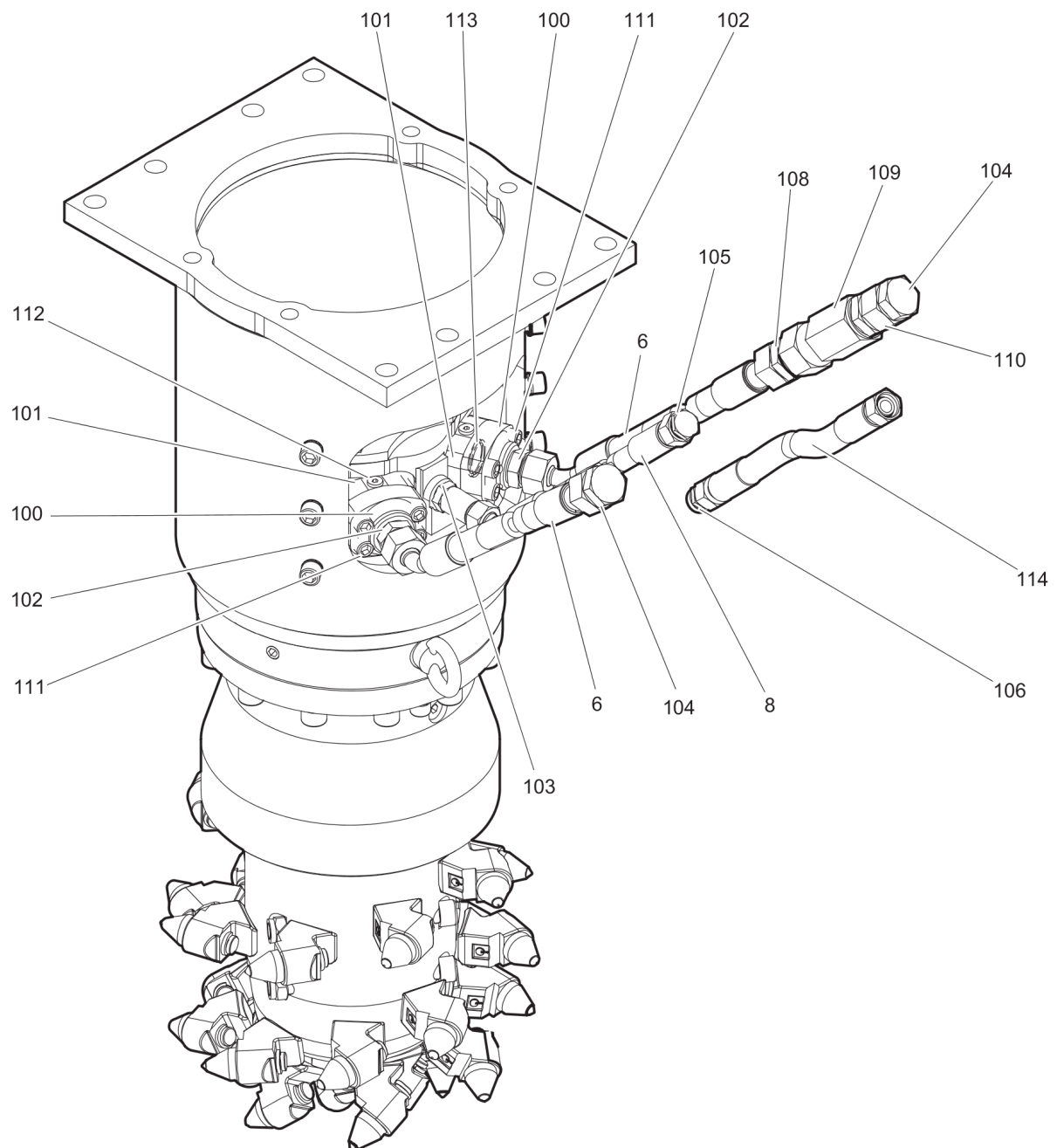
This page intentionally left blank

## Mechanical Longitudinal Drum Cutter, part 2



Item	Part No.	Name	Qty	L
29	3311001804	Pick box	30	
80	3311003370	Cutting head	1	

## Mechanical Longitudinal Drum Cutter, part 3



Item	Part No.	Name	Qty	L
KIT	3311003825	Hose kit metric, 2.1 m (6.89 ft) (Standard)	1	
6	3311003537	Hydraulic hose	2	
8	3311003539	Hydraulic hose	1	
100	3311003513	Flange	2	
101	3311001231	Flange	2	
102	3311002525	Fitting	2	
103	3311003504	Fitting	1	
104	3311000118	Plug	2	
105	3311000119	Plug	1	
106	3311000120	Fitting	1	
108	3311000086	Fitting	1	
109	3311002965	Check valve	1	
110	3311000085	Fitting	1	
111	3311000552	Allen screw	8	
112	3311002599	Threaded plug	2	
113	3311000556	O-ring	4	
114	3311001582	Hydraulic hose	1	
KIT	3311004504	Hose kit JIC, 2.1 m (6.89 ft) (Optional)	1	
6	3311005938	Hydraulic hose	2	
8	3311005939	Hydraulic hose	1	
100	3311000168	Flange	2	
101	3311001231	Flange	2	
102	3311003016	Fitting	2	
103	3311005940	Fitting	1	
104	3311002745	Plug	2	
105	3311002747	Plug	1	
106	3311002211	Fitting	1	
108	3311003016	Fitting	1	
109	3311002965	Check valve	1	
110	3311002744	Fitting	1	
111	3311000552	Allen screw	8	
112	3311002599	Threaded plug	1	
113	3311000556	O-ring	4	
114	3311002209	Hydraulic hose	1	

Comments for Page: Longitudinal Drum Cutter, part 3

(L)OCAL REMARKS

Refer to the DocMine web page for most up-to-date information. The printed information might be outdated.

Fri Aug 12 05:11:57 UTC 2022

A | see chapter Options / accessories

This page intentionally left blank

Mechanical Tightening torques

NO EXPLODED VIEW  
AVAILABLE  
FOR THIS BOM



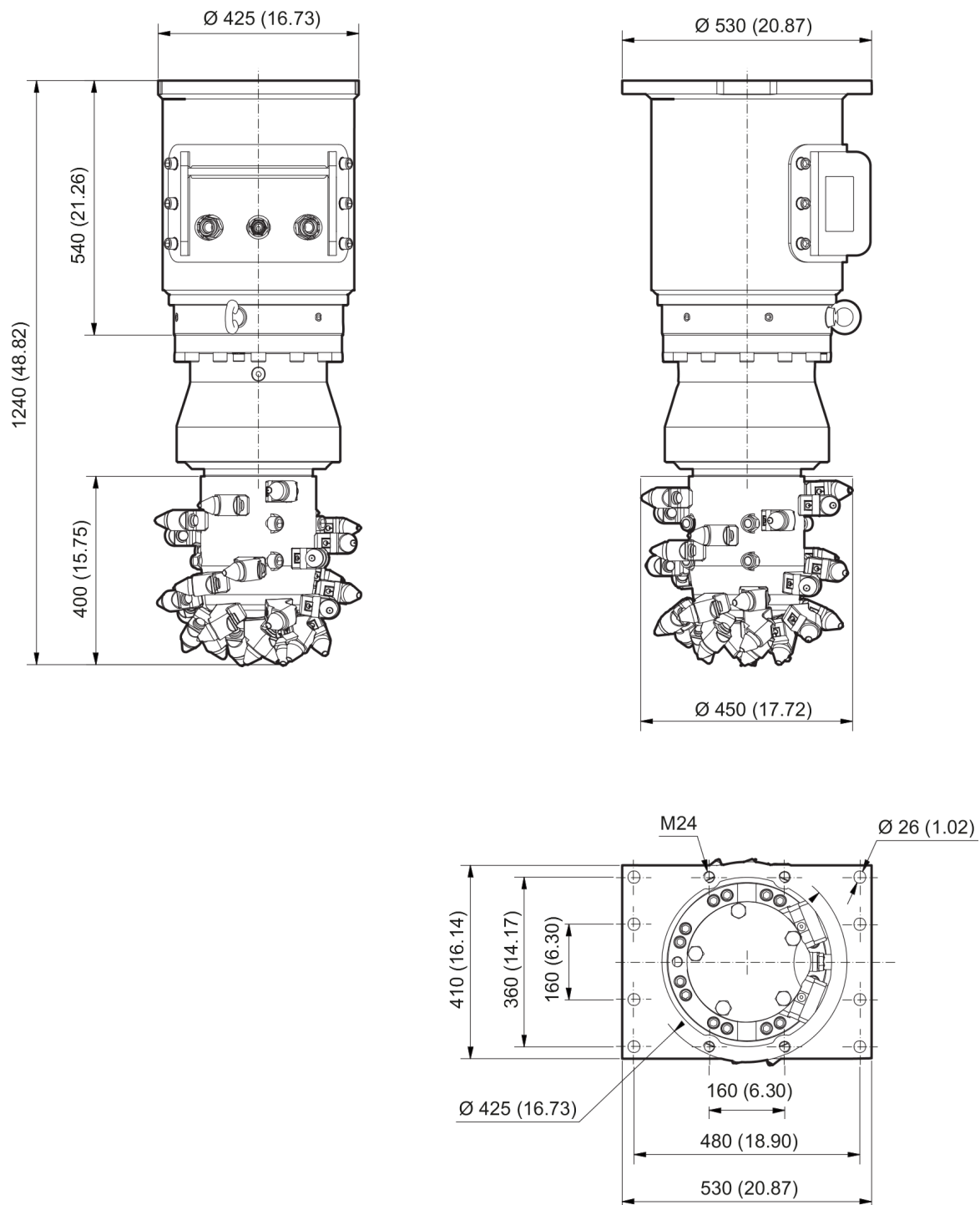
Item	Part No.	Name	Qty	L
67	-	Allen screw - 420 Nm (310 ft lbf)	-	A
75	-	Lock nut - 420 Nm (310 ft lbf)	-	B

Comments for Page: Tightening torques

A | Allen key size 17

B | Open-ended wrench key size 30

## Mechanical Dimensions

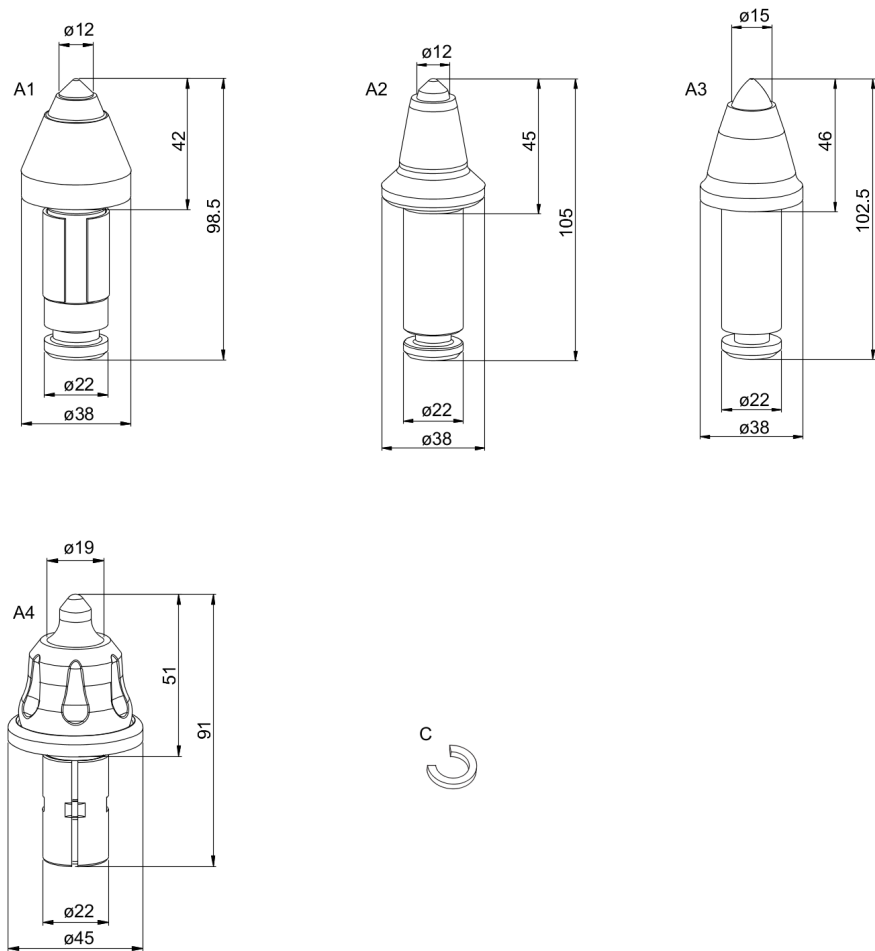


Refer to the DocMine web page for most up-to-date information. The printed information might be outdated.

Fri Aug 12 05:11:59 UTC 2022

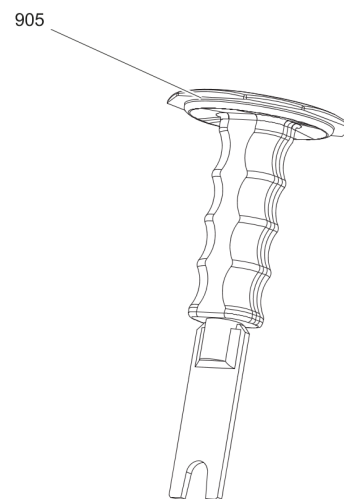
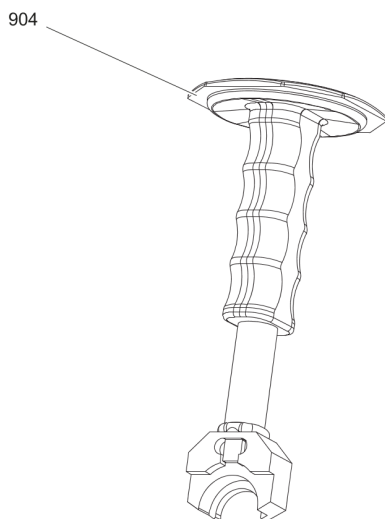
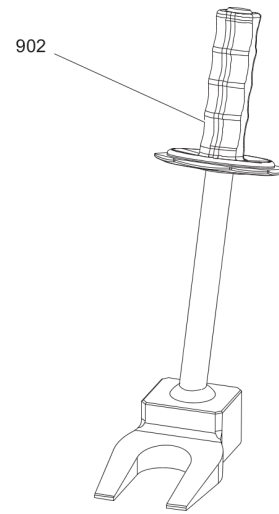
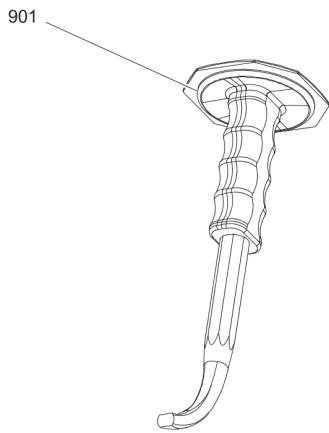
This page intentionally left blank

Options / accessories Picks and retainers kits



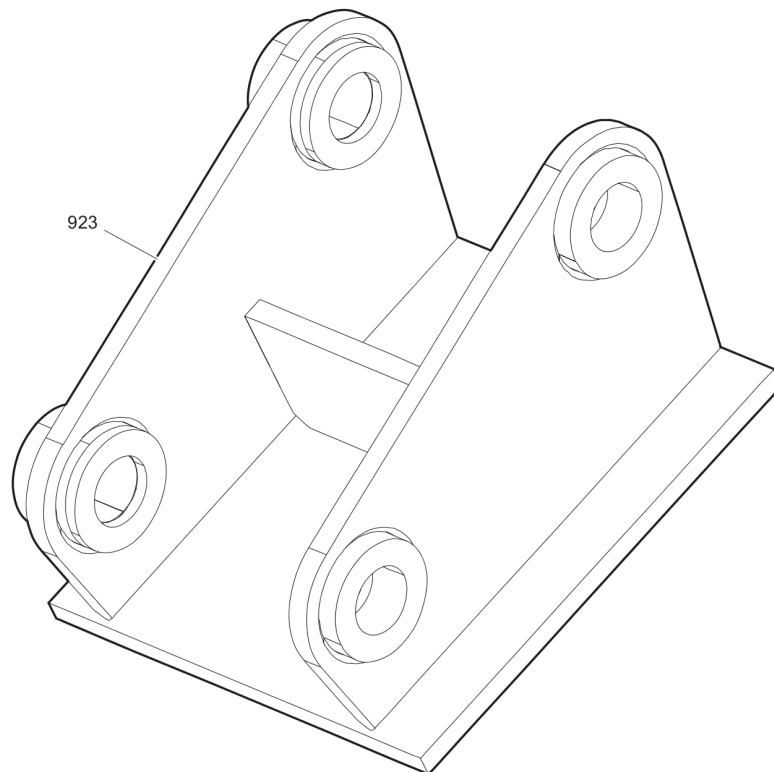
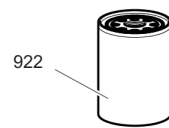
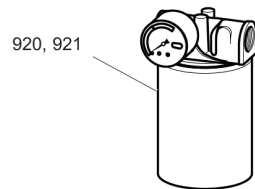
Item	Part No.	Name	Qty	L
1	3311004565	Picks and retainers kit	1	
A1		ER12/45/38/22HC	40	
C	3311000990	Knock on retainer	40	
2	3311004566	Picks and retainers kit	1	
A2		ER12/45/38/22C	40	
C	3311000990	Knock on retainer	40	
3	3311004567	Picks and retainers kit	1	
A3		ER15/46/38/22C	40	
C	3311000990	Knock on retainer	40	
4	3311004568	Picks and retainers kit	1	
A4		ER19/51/45/22H	40	

## Options / accessories Tools for picks



Item	Part No.	Name	Qty	L
901	3311000989	Knock out tool	1	
902	3311002039	Knock out tool for stuck picks (optional)	1	
904	3311002196	Mounting tool	1	
905	3311002197	Dismantling tool	1	

## Options / accessories Optional equipment





Item	Part No.	Name	Qty	L
920	3311000066	Hydraulic filter set for leakage oil, metric	1	
921	3311002298	Hydraulic filter set for leakage oil, JIC	1	
922	3311000064	Filter cartridge for leakage oil, metric and JIC	1	
923		Adapter plate matching the carrier. Consult the authorized Customer Center/Dealer in your area.	1	





Any unauthorized use or copying of the contents or any part thereof is prohibited.  
This applies in particular to trademarks, model denominations, part numbers, and drawings.