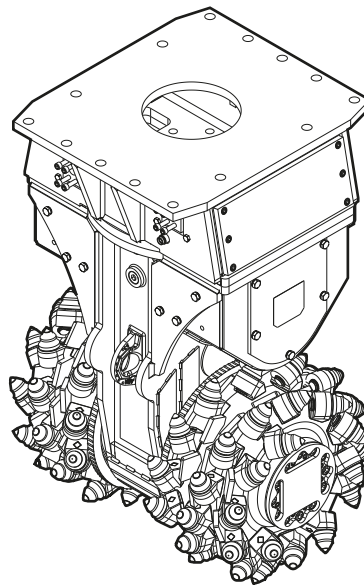


# ER 4000

---

## Spare parts list Transverse Drum Cutters

ER 4000 s/n DGR545750 -



# General information

This spare parts list applies to the following:

## Description

ER 4000 - 1  
ER 4000 - 2  
ER 4000 - 3

Use only authorized parts. Any damage or malfunction caused by the use of unauthorized parts is not covered by Warranty or Product Liability. Any unauthorized use or copying of the contents or any part thereof is prohibited. This applies in particular to trademarks, model denominations, part numbers, and drawings.

## Instructions for use

This spare parts list contains no safety regulations and is merely intended to assist in the ordering of spare parts.

For information about operating, servicing, or repairing, the relevant Safety and operating instructions must be consulted at all costs.

Please observe the safety instructions listed in the relevant Safety and operating instructions!

**Service, repair and wear part kits**

Label kit	1
-----------	---

**Mechanical**

Transverse Drum Cutter, part 1	3
Transverse Drum Cutter, part 2	6
Transverse Drum Cutter, part 3	9
HATCON	11
Tightening torques	13
Dimensions	15
Dimensions	16

**Options / accessories**

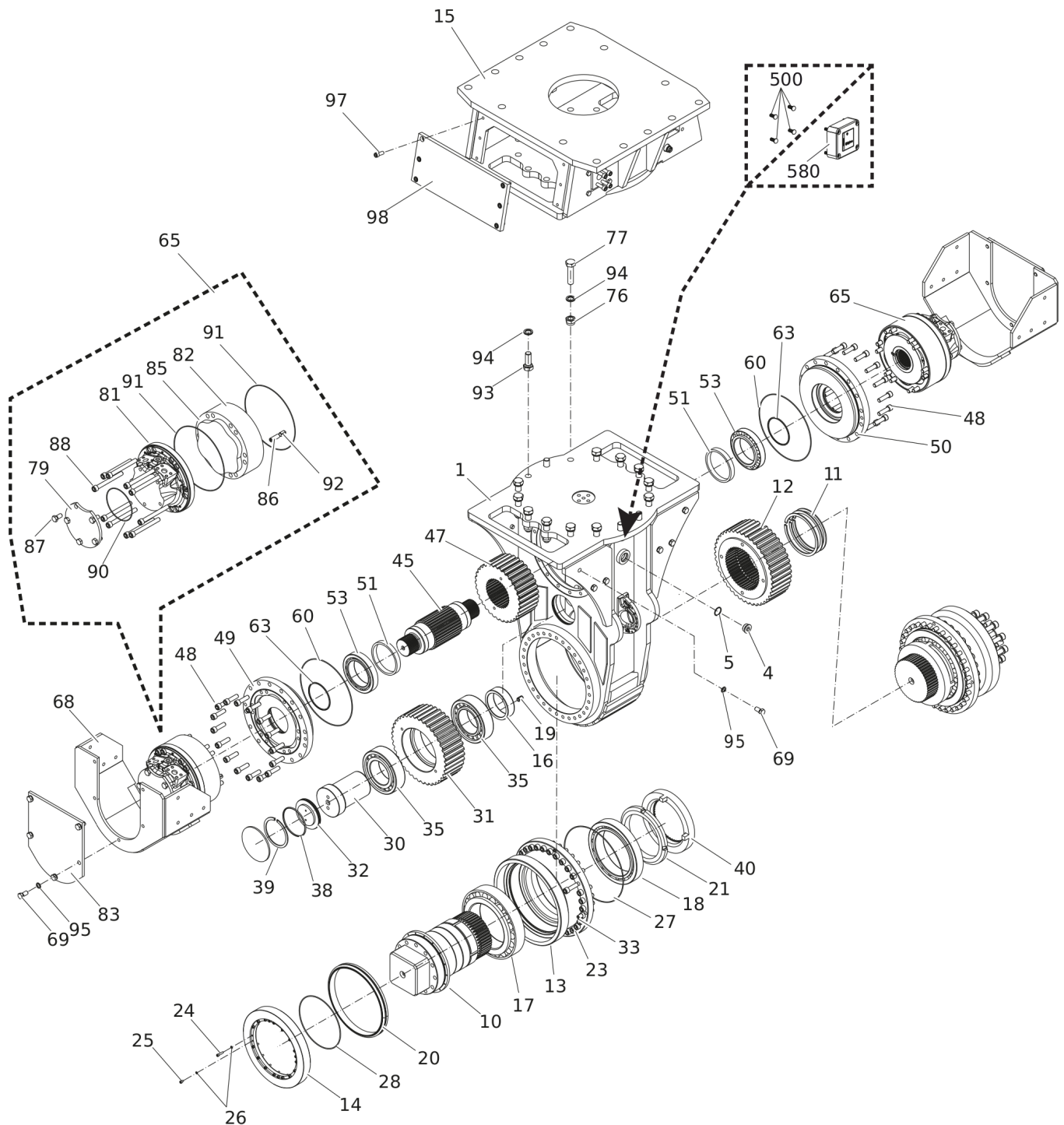
Picks and retainers kits	18
Tools for picks	21
Optional equipment	23

Service, repair and wear part kits Label kit

NO EXPLODED VIEW  
AVAILABLE  
FOR THIS BOM

Item	Part No.	Name	Qty	L
KIT	3311006214	Label kit	1	

## Mechanical Transverse Drum Cutter, part 1



Refer to the DocMine web page for most up-to-date information. The printed information might be outdated.  
Thu Aug 15 05:58:12 UTC 2024

Item	Part No.	Name	Qty	L
1	3311006123	Gear housing	1	
4	3311000583	Plug	2	
5	3311000584	Seal	2	
10	3311006077	Output shaft	2	
11	3311000697	Lock ring	3	
12	3311006090	Output cogwheel	1	
13	3311006078	Housing (output shaft)	2	
14	3311001599	Sealing cover	2	
15	3311006198	Intermediate bracket	1	
16	3311006109	Distancering bolt	1	
17	3311000698	Tapered roller bearing	2	
18	3311000699	Tapered roller bearing	2	
19	3311000910	Clamping sleeve	1	
20	3311000700	Seal	2	
21	3311000443	Shaft nut	2	
23	3311000682	Allen screw	64	
24	3311000704	Allen screw	32	
25	3311001068	Allen screw	8	
26	3311000592	Usit-ring	40	
27	3311000708	O-ring	2	
28	3311000709	O-ring	2	
30	3311006108	Bolt	1	
31	3311006089	Idle cogwheel	1	
32	3311006110	Cover	1	
33	3311003512	Bolt	8	
35	3311006137	Cylindrical roller bearing	2	
38	3311006138	Sealing ring	1	
39	3311006139	Retaining ring	1	
40	3311000448	Lock ring	2	
45	3311006107	Drive shaft	1	
47	3311006088	Drive cogwheel	1	
48	3311000682	Allen screw	32	
49	3311000395	Flange (motor)	1	
50	3311006135	Flange (motor)	1	
51	3311006134	Distancering bolt	2	
53	3311000689	Tapered roller bearing	2	
60	3311000691	O-ring	2	

Refer to the DocMine web page for most up-to-date information. The printed information might be outdated.

Thu Aug 15 05:58:12 UTC 2024

Item	Part No.	Name	Qty	L
63	3311000692	Seal	2	
65	3311001204	Motor complete	2	A
65	3311001205	Motor complete	2	B
65	3311001206	Motor complete	2	C
68	3311006133	Cover (motor)	2	
69	3311000502	Hexagon head screw	5	
76	3311000508	Hex nut	12	
77	3311000577	Hexagonal screw	12	
79	3311000143	Cover (motor)	2	
81	3311001101	Distribution housing (motor)	2	
82	3311002963	Cam ring	2	A
82	3311000189	Cam ring	2	B
82	3311000190	Cam ring	2	C
83	3311006136	Assembling cap	2	
85	3311002964	Cylinder block	2	
86	3311000203	Tension pin (motor)	4	
87	3311000502	Hexagon head screw	10	
88	3311000683	Allen screw	20	
90	3311000537	O-ring	2	
91	3311000687	O-ring	4	
92	3311000204	Fitting sleeve (motor)	4	
93	3311000503	Hexagon head screw	4	
94	3311000521	Pair of lock washers	16	
95	3311000532	Pair of lock washers	5	
97	3311000549	Allen screw	12	
98	3311006136	Assembling cap	2	
500	3315439145	PROTECTIVE PLUG HATCON	4	A
580		HATCON	1	B

Comments for Page: Transverse Drum Cutter, part 1

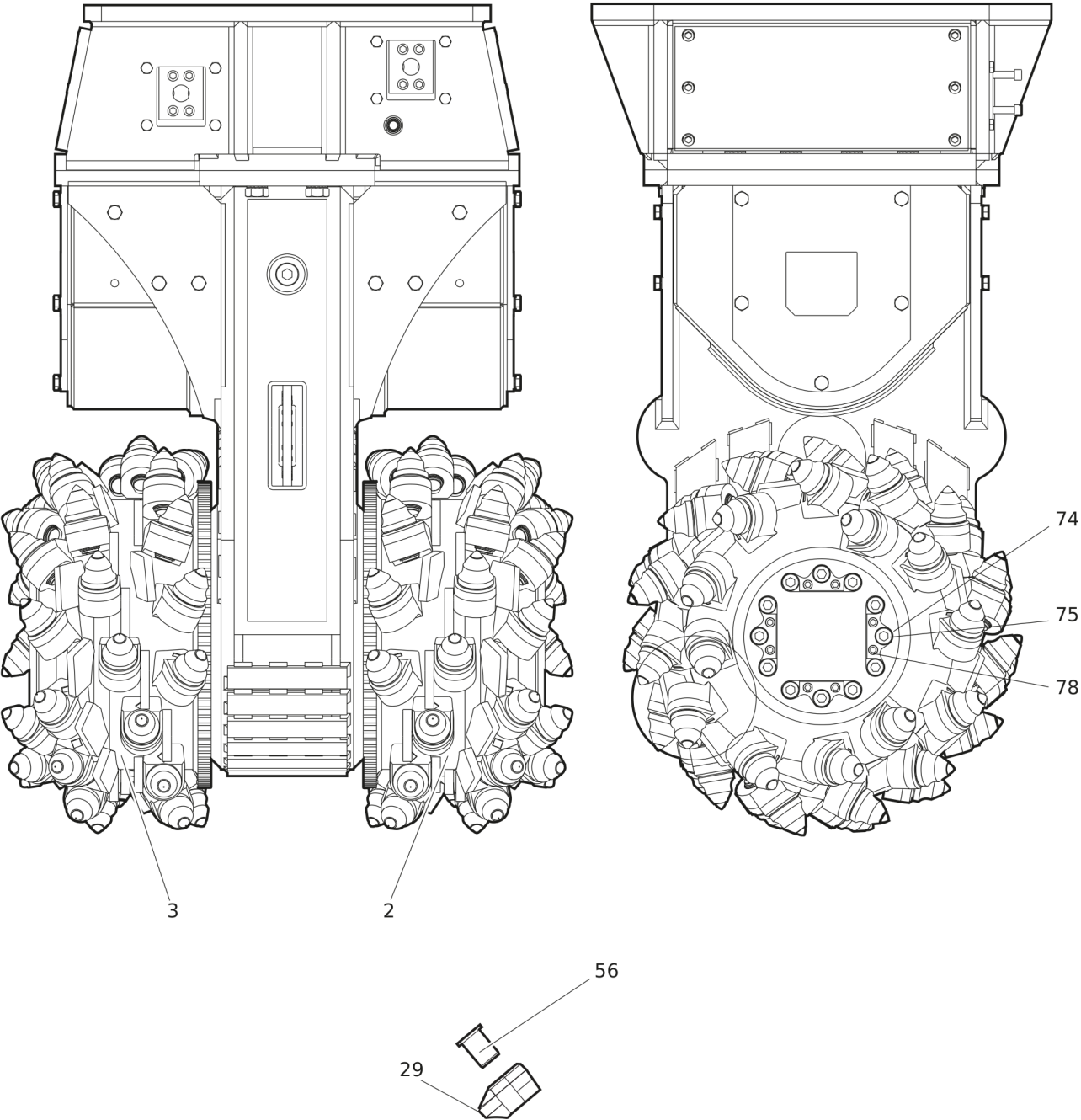
A | only for drum cutters without HATCON

B | only for drum cutters with HATCON / see separate chapter



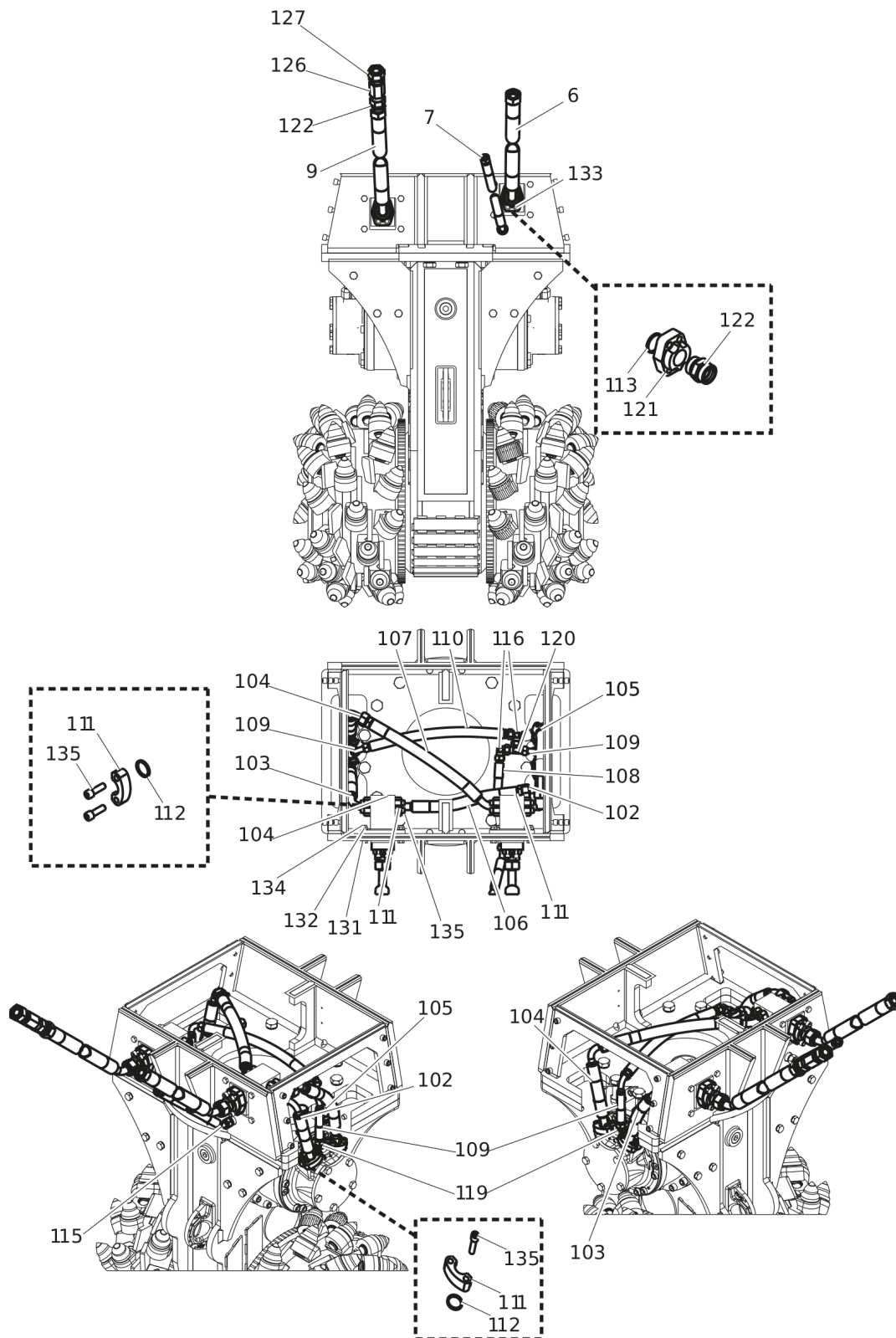
This page intentionally left blank

Mechanical Transverse Drum Cutter, part 2



Item	Part No.	Name	Qty	L
2	3311006080	Cutter drum (left)	1	
3	3311006079	Cutter drum (right/motor)	1	
29	3311000880	Pick box	78	
56	3311005961	Wear sleeve	78	
74	3311000534	Pair of lock washers	24	
75	3311000677	Allen screw	24	
78	3311000578	Threaded pin	16	

## Mechanical Transverse Drum Cutter, part 3

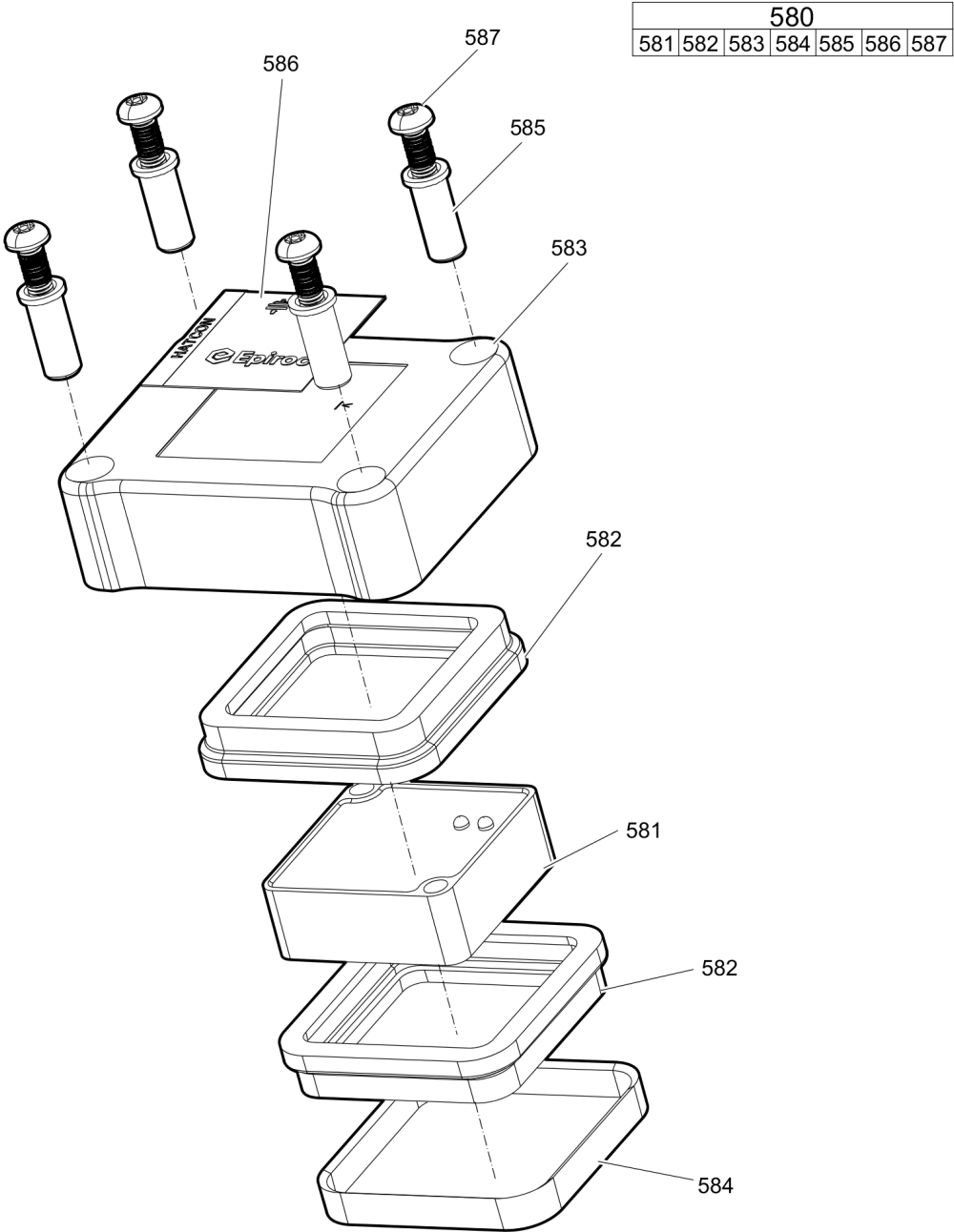


Refer to the DocMine web page for most up-to-date information. The printed information might be outdated.

Thu Aug 15 05:58:13 UTC 2024

Item	Part No.	Name	Qty	L
KIT	3311006447	Hose kit metric, 2.5 m (Standard)	1	
6	3311001102	Hydraulic hose	1	
7	3311000244	Hydraulic hose	1	
9	3311001102	Hydraulic hose	1	
101	3311001103	Hydraulic block	2	
102	3311006433	Hydraulic hose	1	
103	3311006436	Hydraulic hose	1	
104	3311006437	Hydraulic hose	1	
105	3311006438	Hydraulic hose	1	
106	3311006439	Hydraulic hose	1	
107	3311006440	Hydraulic hose	1	
108	3311006441	Hydraulic hose	1	
109	3311006442	Hydraulic hose	2	
110	3311006443	Hydraulic hose	1	
111	3311000170	Flange	16	
112	3311000556	O-ring	8	
113	3311001099	O-ring	2	
114	3311001105	Adapter	1	
115	3311001106	Fitting	1	
116	3311002962	Fitting	2	
119	3311000099	Fitting	2	
120	3311004957	Fitting	1	
121	3311001108	Fitting	2	
122	3311001088	Fitting	3	
126	3311000242	Check valve	1	
127	3311001085	Fitting	1	
131	3311001132	Hexagon head screw	8	
132	3311001137	Disk	8	
133	3311000545	Allen screw	8	
134	3311000667	Lock nut	8	
135	3311000536	Allen screw	32	

Mechanical HATCON



Item	Part No.	Name	Qty	L
580(581-587)		HATCON	1	A
581		TRACKING MODULE HATCON	1	
582	3315439130	DAMPER HATCON	2	
583	3315439110	HOUSING TYPE 1 HATCON	1	
584	3315439140	LOCK RING HATCON	1	
585	3315439120	SLEEVE HATCON	4	
586	3315439100	PRODUCT LABEL HATCON	1	
587	3315442600	SCREW HATCON	4	

Comments for Page: HATCON

A | part number see chapter "Optional equipment"

---

Mechanical Tightening torques

NO EXPLODED VIEW  
AVAILABLE  
FOR THIS BOM



Item	Part No.	Name	Qty	L
69	-	Allen screw - 400 Nm (295 ft lbf)	-	A
75	-	Allen screw - 950 Nm (701 ft lbf)	-	B
77	-	Allen screw - 1428 Nm (1053 ft lbf)		C
93	-	Allen screw - 1428 Nm (1053 ft lbf)		C

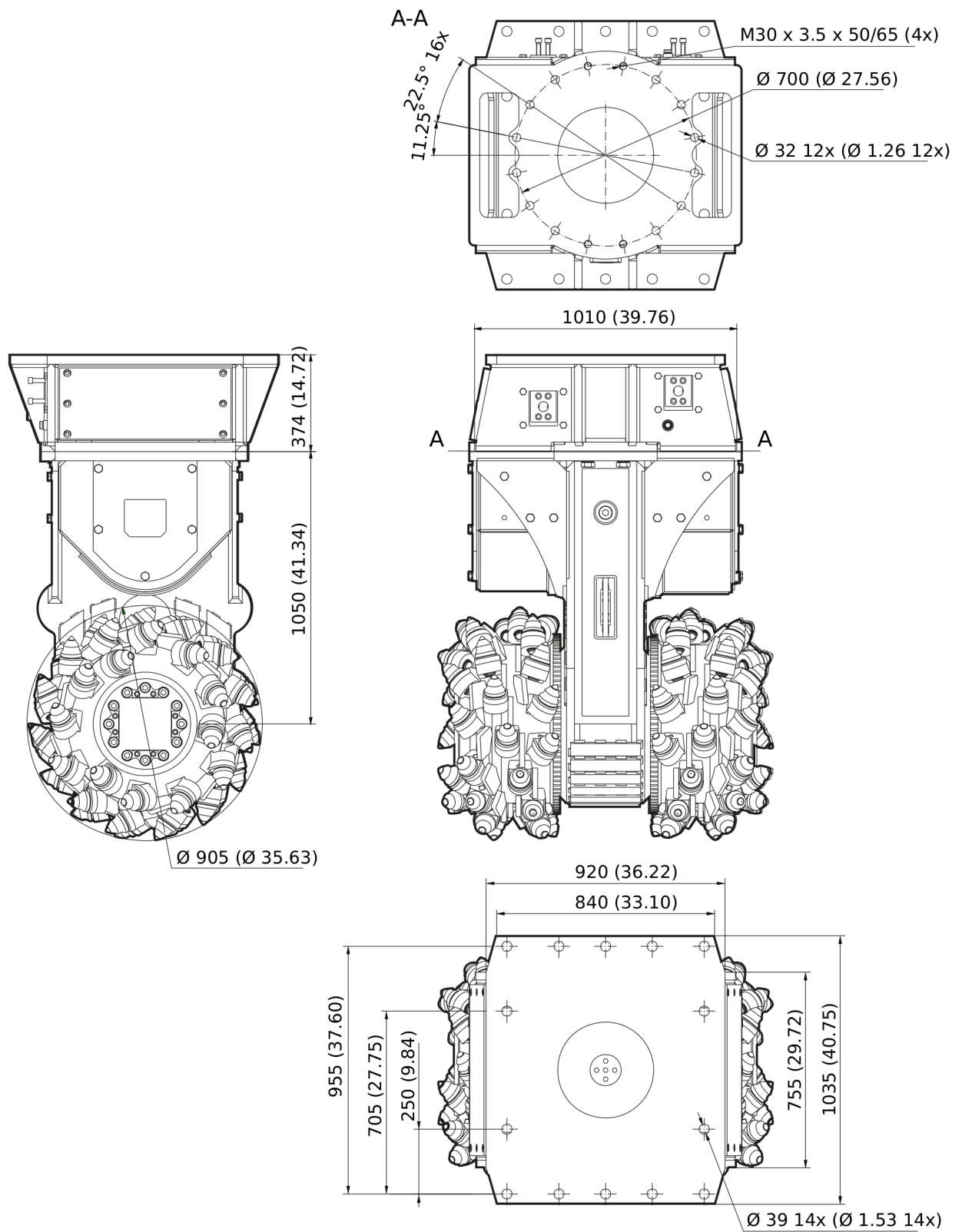
Comments for Page: Tightening torques

A | Allen key size 30

B | Allen key size 19

C | Allen key size 46

## Mechanical Dimensions

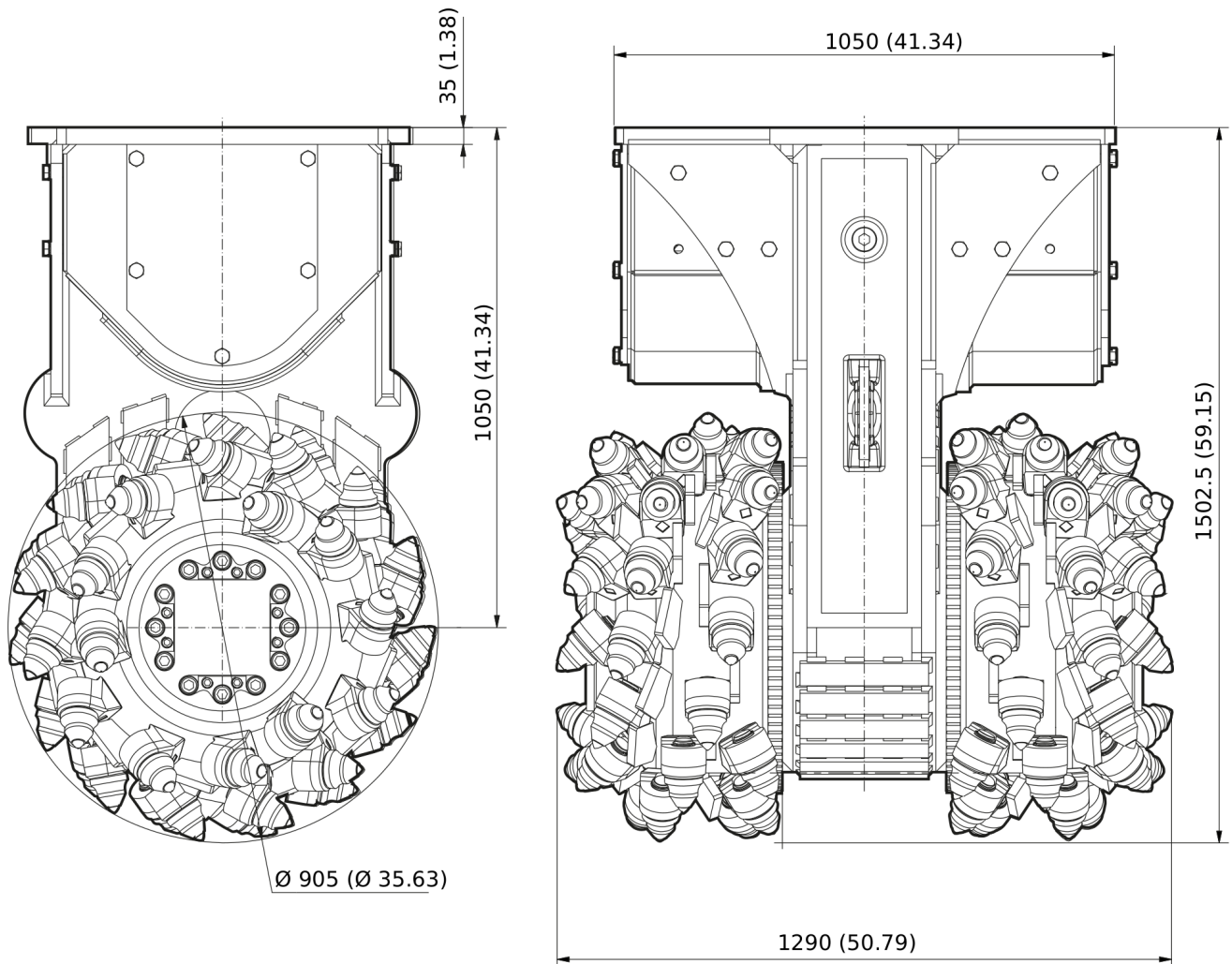


Refer to the DocMine web page for most up-to-date information. The printed information might be outdated.

Thu Aug 15 05:58:15 UTC 2024

This page intentionally left blank

## Mechanical Dimensions

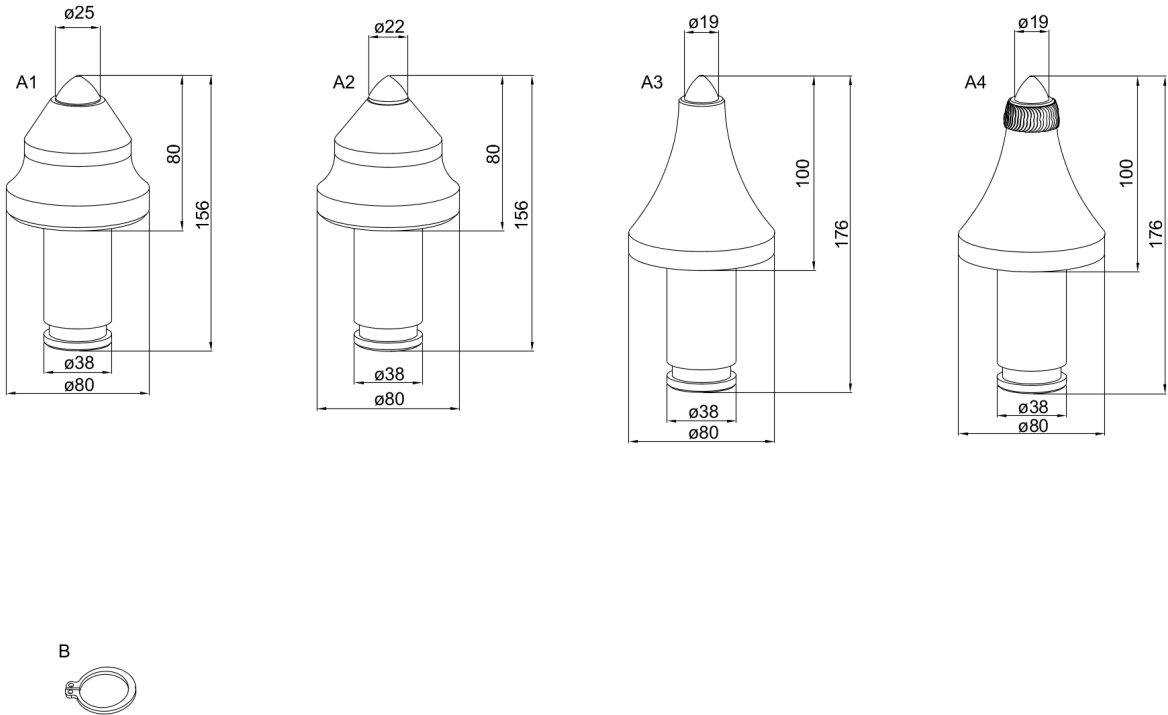


Refer to the DocMine web page for most up-to-date information. The printed information might be outdated.

Thu Aug 15 05:58:15 UTC 2024

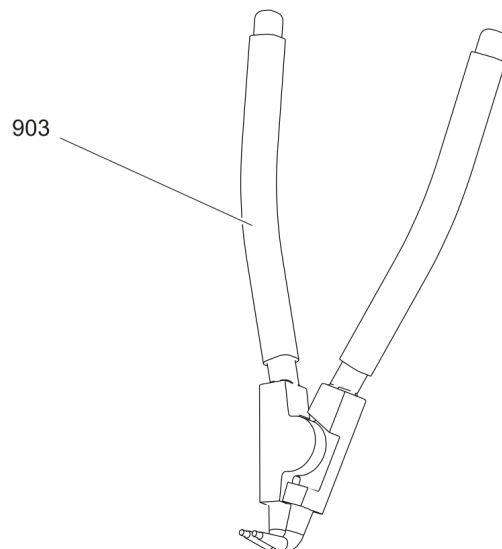
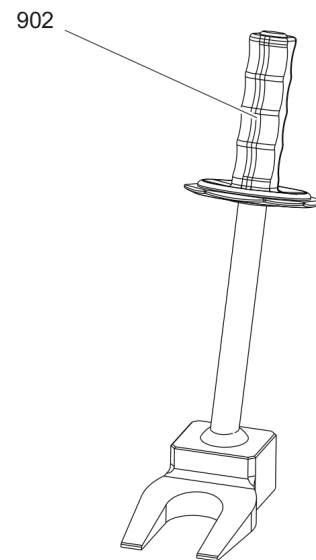
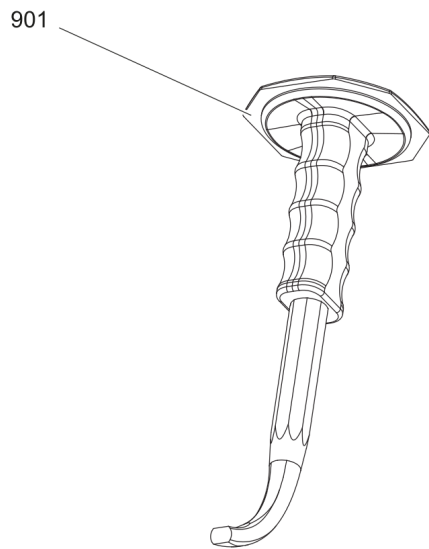
This page intentionally left blank

Options / accessories Picks and retainers kits



Item	Part No.	Name	Qty	L
1	3311004590	Picks and retainers kit	1	
A1		ER25/80/80/38S	6	
B	3311000979	Circlip	12	
2	3311004591	Picks and retainers kit	1	
A2		ER22/80/80/38S	8	
B	3311000979	Circlip	16	
3	3311004592	Picks and retainers kit	1	
A3		ER19/100/80/38S	6	
B	3311000979	Circlip	12	
4	3311004593	Picks and retainers kit	1	
A4		ER19/100/80/38PS	6	
B	3311000979	Circlip	12	

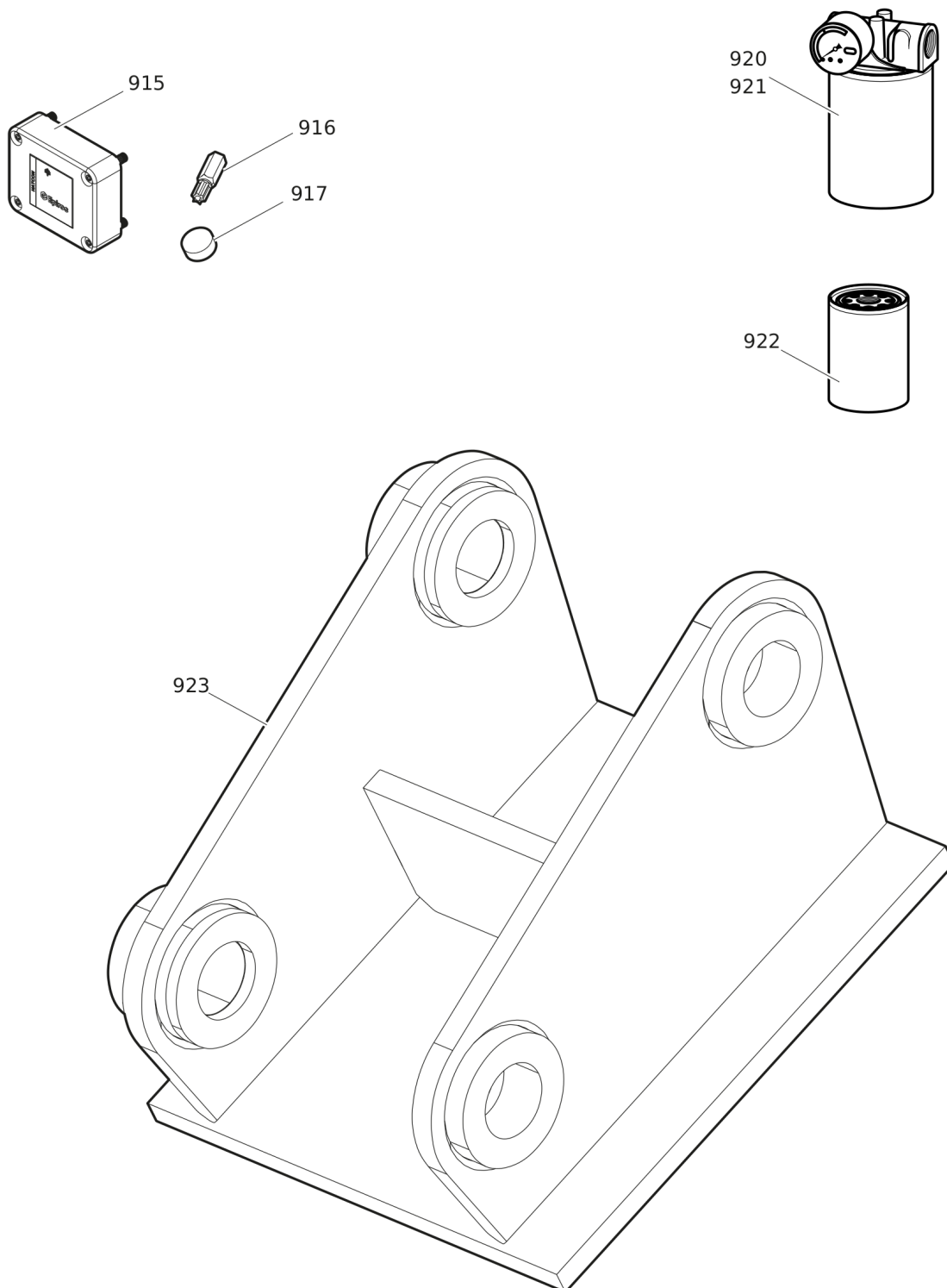
## Options / accessories Tools for picks





Item	Part No.	Name	Qty	L
901	3311000989	Knock out tool	1	
902	3311002872	Knock out tool for stuck picks	1	
903	3311002194	Pliers	1	

## Options / accessories Optional equipment



Item	Part No.	Name	Qty	L
915	3315442500	HATCON KIT 1 (3G)	1	A
915	3315442520	HATCON KIT 1 (LTE)	1	
916	3315439105	SECURITY BIT HATCON	1	
917	3315439106	MAGNET HATCON	1	
920	3311003111	Hydraulic filter set for leakage oil, metric	1	
921	3311003195	Hydraulic filter set for leakage oil, JIC	1	
922	3311003087	Filter cartridge for leakage oil, metric and JIC	1	
923		ADAPTER PLATE matching the carrier. Consult the authorized Customer Center/Dealer in your area.	1	
-	3311005536	WATER SPRAY KIT	1	

Comments for Page: Optional equipment

A | with item 916 and 917

Any unauthorized use or copying of the contents or any part thereof is prohibited.  
This applies in particular to trademarks, model denominations, part numbers, and drawings.