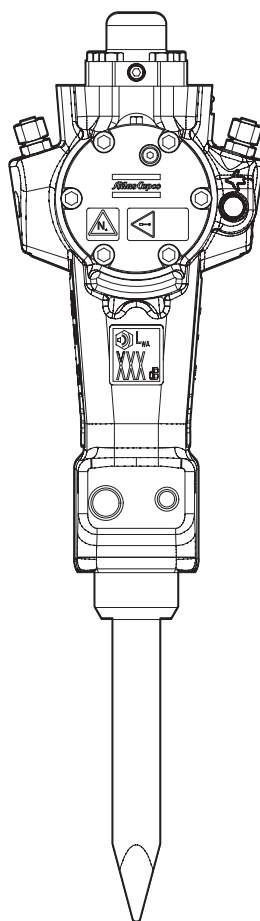


SB 52

Spare parts list

Hydraulic breakers



General information

This spare parts list applies to the following:

Part number	Description
8460030010	SB 52

Use only authorized parts. Any damage or malfunction caused by the use of unauthorized parts is not covered by Warranty or Product Liability. Any unauthorized use or copying of the contents or any part thereof is prohibited. This applies in particular to trademarks, model denominations, part numbers, and drawings.

Instructions for use

This spare parts list contains no safety regulations and is merely intended to assist in the ordering of spare parts.

For information about operating, servicing, or repairing, the relevant Safety and operating instructions must be consulted at all costs.

Please observe the safety instructions listed in the relevant Safety and operating instructions!

Contents

Spare parts list

Spare parts list	4
------------------------	---

Optional parts

Bushing oversize, complete	7
Restrictor, complete	10

Tightening torque

Tightening torque	12
-------------------------	----

Working tools

Working tools SB 52	14
---------------------------	----

Accessories

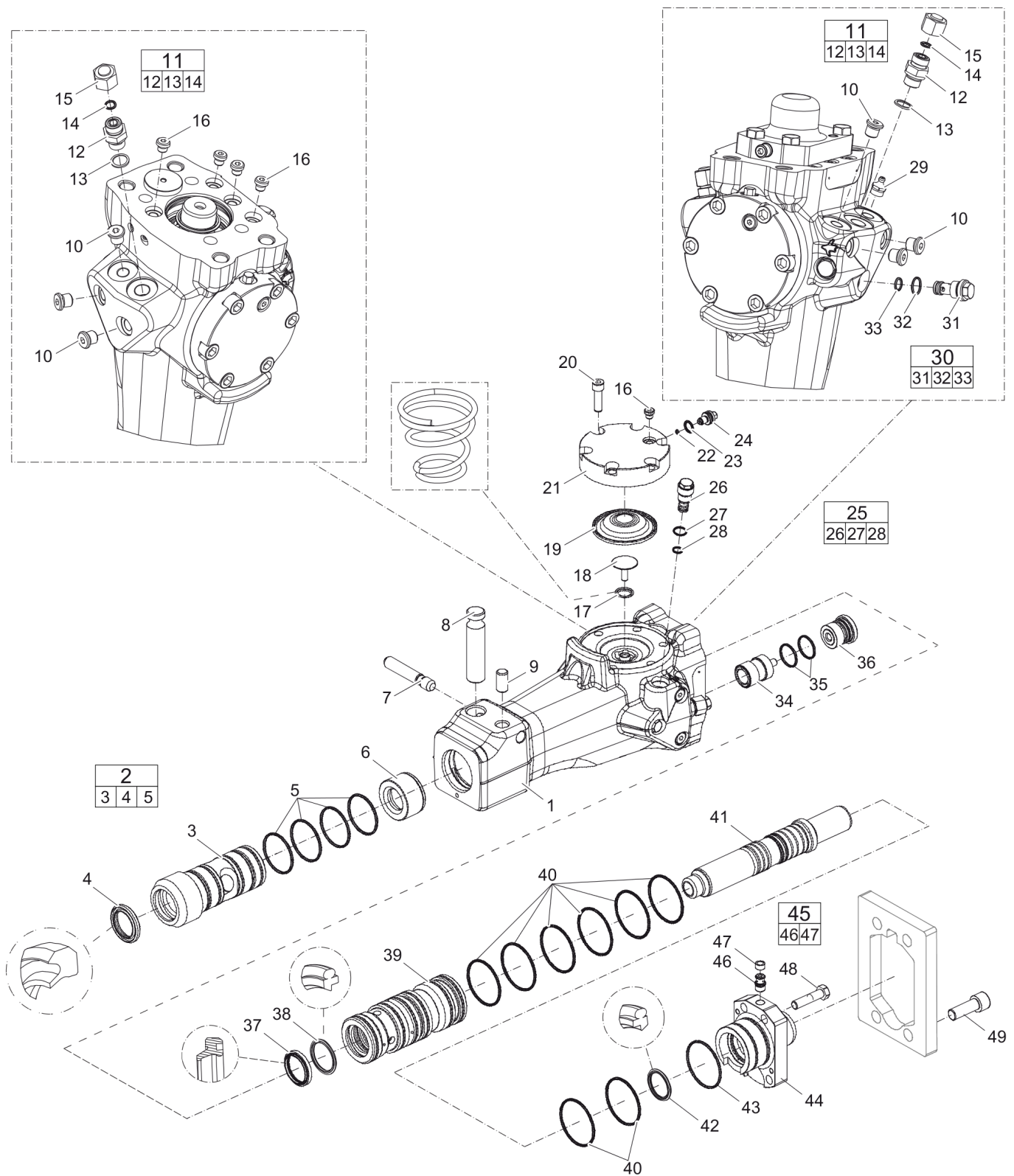
Optional equipment	17
Hydraulic hoses	20

Kits

Label kit	22
Seal kit	24
Accumulator repair kit	26
Lower hammer part kit	28

Dimensions

Dimensions SB 52	30
------------------------	----

Spare parts list Spare parts list

Refer to Parts Online for the most up to date information. The printed information might be outdated.

Tue Dec 02 07:27:31 MST 2014

Item	Part No.	Name	Qty	L
1	-	Hammer body	1	
2	3315333780	Bushing, complete	1	A
3	--	Bushing, Ø 60 mm, Ø 2.36 in.	1	
4	3315334200	Scraper ring	1	
5	0663210800	O-ring, 54.5 x 3 mm, 2.15 x 0.12 in.	4	
6	3315334500	Stop ring	1	
7	3315333900	Lock pin	1	
8	3315346500	Tool retainer	1	
9	3315304600	Lock buffer	1	
10	0686644207	Plug	6	B
11	0570700002	Nipple, complete	2	C
.12	--	Nipple	1	
.13	0664000002	Seal ring	1	
.14	0663905001	O-ring, 9.25 x 1.78 mm , 0.36 x 0.07 in. (90 shore)	1	
15	0570700009	Cap	2	
16	0686371805	Plug VSTI R 1/8-ED	5	D
17	3315346600	Coil spring	1	
18	3315339100	Diaphragm support	1	
19	3315346200	Diaphragm	1	
20	0211196548	Hexagon socket screw	6	
21	3315334600	Accumulator cover	1	
22	0661100048	Seal washer	1	
23	0663212000	O-ring 13.3 x 2.4 mm (70 shore), 0.52 x 0.09 in.	1	
24	3315346400	Charge valve	1	
25	3315335000	Pressure relief valve, complete	1	
.26	--	Pressure relief valve	1	
.27	0663903201	O-ring, 10.82 x 1.78 mm , 0.43 x 0.07 in. (90 shore)	1	
.28	0663905401	O-ring, 15.6 x 1.78 mm , 0.61 x 0.07 in. (90 shore)	1	
29	0544215300	Grease nipple	1	E
30	3315369537	Restrictor, complete	1	F
.31	--	Restrictor	1	
.32	0663903201	O-ring, 10.82 x 1.78 mm , 0.43 x 0.07 in. (90 shore)	1	
.33	0663905401	O-ring, 15.6 x 1.78 mm , 0.61 x 0.07 in. (90 shore)	1	
34	3315298700	Control valve	1	
35	0663211489	O-ring, 28.24 x 2.62 mm, 1.11 x 0.10 in.	2	
36	3315365000	Valve cover	1	
37	0665909963	Wiper	1	

Refer to Parts Online for the most up to date information. The printed information might be outdated.

Tue Dec 02 07:27:31 MST 2014

Item	Part No.	Name	Qty	L
38	0665070142	Piston rod seal	1	
39	3315333800	Liner	1	
40	0663211364	O-ring 58 x 3 mm	8	
40	-	Part Description Not Available	1	
41	3315334000	Piston	1	
42	0665070141	Piston rod seal	1	
43	0663210653	O-ring, 76 x 2 mm, 2.99 x 0.08 in.	1	
44	3315333600	Back head	1	
45	3315244881	Check valve, complete	1	
46	--	Check valve	1	
47	3315280800	Valve rubber	1	
48	0147140503	Hex. Head screw	4	
49	3315333592	Bolt kit	1	

Comments for Page: Spare parts list

(L)OCAL REMARKS

A | For more bushings, see section "Bushings oversize, complete"

B | VSTI R 4/4-ED

C | 11/16 - 16UN G3/8A

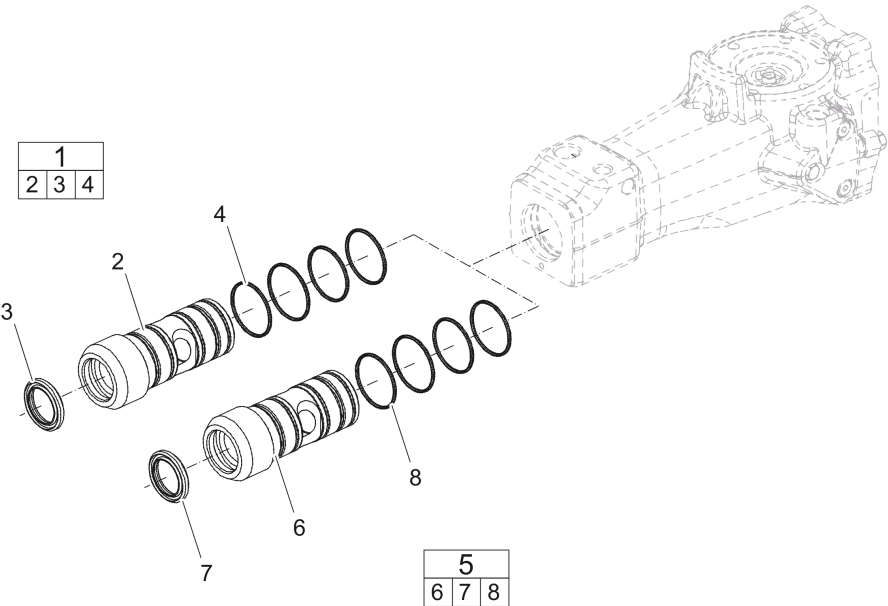
D | VSTI R 1/8-ED

E | ISO 7 - R 1/4

F | For more restrictors, see section "Restrictor, complete"

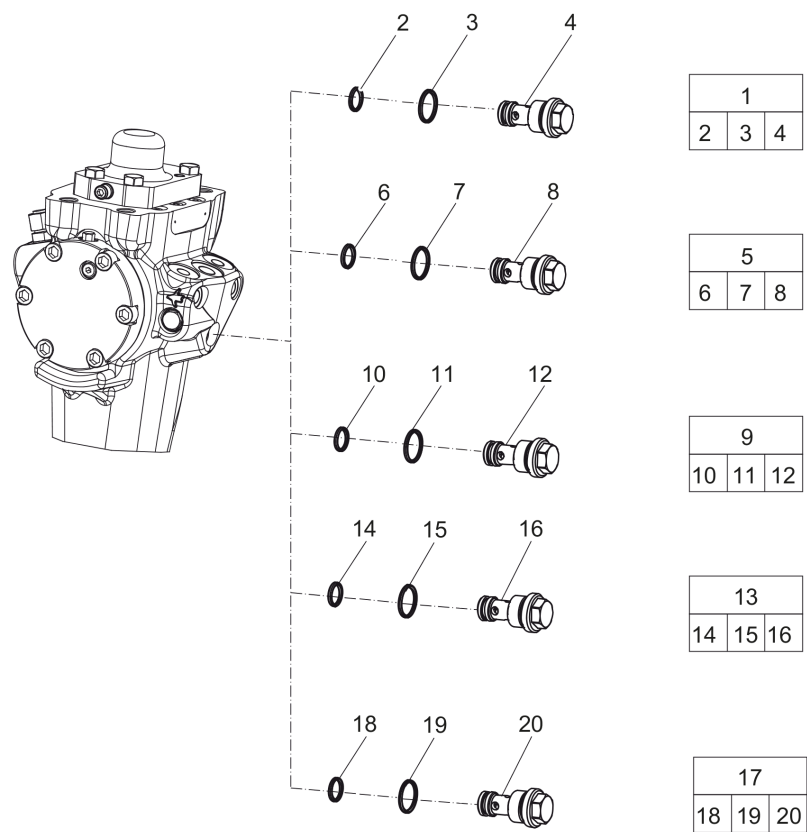
This page intentionally left blank

Optional parts Bushing oversize, complete



Item	Part No.	Name	Qty	L
1	3315333760	Bushing oversize, complete	1	
2	--	Bushing, Ø 61.5 mm, Ø 2.42 in.	1	
3	3315334200	Scraper ring	1	
4	0663210800	O-ring, 54.5 x 3 mm, 2.15 x 0.12 in.	4	
5	3315333763	Bushing oversize, complete	1	
6	--	Bushing, Ø 63.0 mm, Ø 2.48 in.	1	
7	3315334200	Scraper ring	1	
8	0663210800	O-ring, 54.5 x 3 mm, 2.15 x 0.12 in.	4	

Optional parts Restrictor, complete



Item	Part No.	Name	Qty	L
1	3315369522	Restrictor, complete, Ø 2.2 mm, Ø 0.09 in.	1	
.2	--	O-ring, 10.82 x 1.78 mm , 0.43 x 0.07 in. (90 shore)	1	
.3	--	O-ring, 15.60 x 1.78 mm , 0.61 x 0.07 in. (90 shore)	1	
.4	--	Restrictor	1	
5	3315369524	Restrictor, complete, Ø 2.4 mm, Ø 0.09 in.	1	
.6	--	O-ring, 10.82 x 1.78 mm , 0.43 x 0.07 in. (90 shore)	1	
.6	--	O-ring, 10.82 x 1.78 mm , 0.43 x 0.07 in. (90 shore)	1	
.7	--	O-ring, 15.60 x 1.78 mm , 0.61 x 0.07 in. (90 shore)	1	
.7	--	O-ring, 15.60 x 1.78 mm , 0.61 x 0.07 in. (90 shore)	1	
.8	--	Restrictor	1	
.8	--	Restrictor	1	
9	3315369536	Restrictor, complete	1	
.10	--	O-ring, 10.82 x 1.78 mm , 0.43 x 0.07 in. (90 shore)	1	
.10	--	O-ring, 10.82 x 1.78 mm , 0.43 x 0.07 in. (90 shore)	1	
.11	--	O-ring, 15.60 x 1.78 mm , 0.61 x 0.07 in. (90 shore)	1	
.11	--	O-ring, 15.60 x 1.78 mm , 0.61 x 0.07 in. (90 shore)	1	
.12	--	Restrictor	1	
.12	--	Restrictor	1	
13	3315369538	Restrictor, complete	1	
.14	--	O-ring, 10.82 x 1.78 mm , 0.43 x 0.07 in. (90 shore)	1	
.14	--	O-ring, 10.82 x 1.78 mm , 0.43 x 0.07 in. (90 shore)	1	
.15	--	O-ring, 15.60 x 1.78 mm , 0.61 x 0.07 in. (90 shore)	1	
.15	--	O-ring, 15.60 x 1.78 mm , 0.61 x 0.07 in. (90 shore)	1	
.16	--	Restrictor	1	
.16	--	Restrictor	1	
17	3315369527	Restrictor, complete, ø2.7 mm, ø0.11 in.	1	
.18	--	O-ring, 10.82 x 1.78 mm , 0.43 x 0.07 in. (90 shore)	1	
.18	--	O-ring, 10.82 x 1.78 mm , 0.43 x 0.07 in. (90 shore)	1	
.19	--	O-ring, 15.60 x 1.78 mm , 0.61 x 0.07 in. (90 shore)	1	
.19	--	O-ring, 15.60 x 1.78 mm , 0.61 x 0.07 in. (90 shore)	1	
.20	--	Restrictor	1	
.20	--	Restrictor	1	

Tightening torque Tightening torque

NO EXPLODED VIEW
AVAILABLE
FOR THIS BOM

Item	Part No.	Name	Qty	L
10	-	Plug - 30 Nm	-	A
12	-	Nipple - 80 Nm	-	
16	-	Plug - 20 Nm	-	B
20	-	Hexagon socket screw - 75 Nm	-	C
24	-	Charge valve - 20 Nm	-	
26	-	Pressure relief valve - 80 Nm	-	
29	-	Grease nipple - 30 Nm	-	
31	-	Restrictor - 80 Nm	-	
46	-	Check valve - 30 Nm	-	D
48	-	Hexagon head screw - 75 Nm	-	E
49	-	Set of four hexagon socket screw - 290 Nm	-	F

Comments for Page: Tightening torque

LOCTITE is a registered trademark of Henkel Corporation. 243 is a trademark of Henkel Corporation. Molykote is a registered trademark of Dow Corning Corporation.

(L)OCAL REMARKS

A | LOCTITE® 243™

B | LOCTITE® 243™

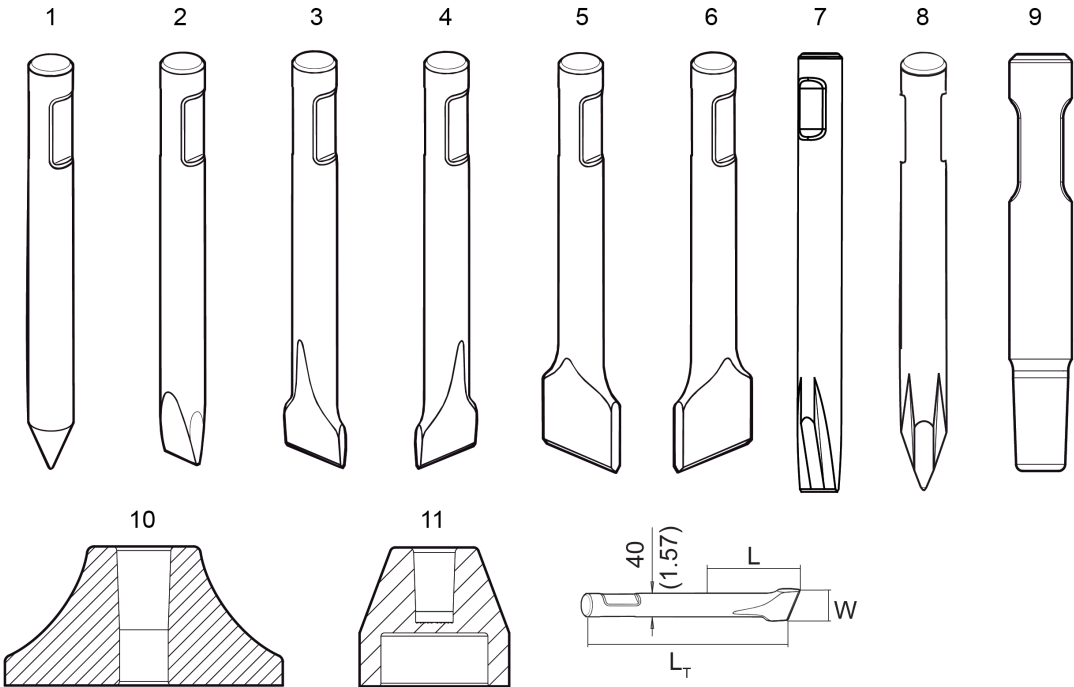
C | Molykote®

D | LOCTITE® 243™

E | Molykote®

F | Molykote®

Working tools Working tools SB 52



Item	Part No.	Name	Qty	L
1	3083340918	Moil point	1	A
2	3083340919	Chisel (cross)	1	B
3	3083340920	Wide chisel (cross)	1	C
4	3083340921	Wide chisel (parallel)	1	D
5	3083340922	Asphalt cutter (cross)	1	E
6	3083340923	Asphalt cutter (parallel)	1	F
7	3363098247	Chisel (X-Profile)	1	G
8	3363098246	Moil point (X-Profile)	1	H
9	3315369900	Shaft	1	I
10	3315370600	Tamping pad (square)	1	J
11	3315371400	Post driver pad (round)	1	K

Comments for Page: Working tools SB 52

(L)OCAL REMARKS

A | L=254 mm, LT=420 mm, Wt=3,9 kg

L=10.00 inch, LT=16.54 inch, Wt=8.5 lb

B | L=254 mm, LT=420 mm, Wt=3,8 kg

L=10.00 inch, LT=16.54 inch, Wt=8.5 lb

C | W=75 mm, L=254 mm, LT=420 mm, Wt=4,2 kg

W=2.95 inch, L=10.00 inch, LT=16.54 inch, Wt=9.2 lb

D | W=75 mm, L=254 mm, LT=420 mm, Wt=4,3 kg

W=2.95 inch, L=10.00 inch, LT=16.54 inch, Wt=9.5 lb

E | W=120 mm, L=254 mm, LT=420 mm, Wt=4,4 kg

W=4.72 inch, L=10.00 inch, LT=16.54 inch, Wt=9.7 lb

F | W=120 mm, L=254 mm, LT=420 mm, Wt=4,4 kg

W=4.72 inch, L=10.00 inch, LT=16.54 inch, Wt=9.7 lb

G | L=254 mm, LT=420 mm, Wt=3,5 kg

L=10.00 inch, LT=16.54 inch, Wt=7.6 lb

H | L=254 mm, LT=420 mm, Wt=3,5 kg

L=10.00 inch, LT=16.54 inch, Wt=7.8 lb

I | LT=400 mm, Wt=3,8 kg

LT=15.75 inch, Wt=8.4 lb

J | W=Ø200 mm, Wt=15 kg

W=Ø7.87 inch, Wt=33.0 lb

K | W=Ø100 mm, Wt= 8,5 kg

W=Ø3.94 inch, Wt=18.7 lb

This page intentionally left blank

Accessories Optional equipment

NO EXPLODED VIEW
AVAILABLE
FOR THIS BOM

Item	Part No.	Name	Qty	L
-	0909107100	Grease gun	1	A
-	3363094913	Chisel paste cartridge, 400 g x 12 pcs, 0.88 lb x 12	1	
-	3315383190	ContiLube II micro	1	
-	3315386780	Welding kit, universal	1	B
-	3315386280	Hose kit, universal	1	C
-	3363106447	Chisel paste cartridge, 150 g x 12, 0.33 lb x 12	1	
-	3363094669	Filling device	1	D
-	3315383980	Filling adapter	1	E
-	3363066411	Filling device	1	F
-	3362263900	Chisel paste container	1	G
-	3362263275	Chisel paste container	1	H
-	3360920415	Filling device for accumulator	1	
-	3363094459	Nipple, for charging the accumulator	1	
-	3361329803	Filling hose, for charging the accumulator	1	
-	3315353100	Bushing wear controller	1	

Comments for Page: Optional equipment

(L)OCAL REMARKS

A | for manual greasing with cartridge 400 g (0.88 lb)

B | for Contilube™ II micro

C | for Contilube™ II micro

D | for Chisel paste cartridges 150 g (0.33 lb) to use in combination with Chisel paste container 15 kg (33 lb)

E | for Chisel paste cartridges 150 g (0.33 lb)

suitable to Filling device for 15 kg (33 lb) and 45 kg (99 lb)

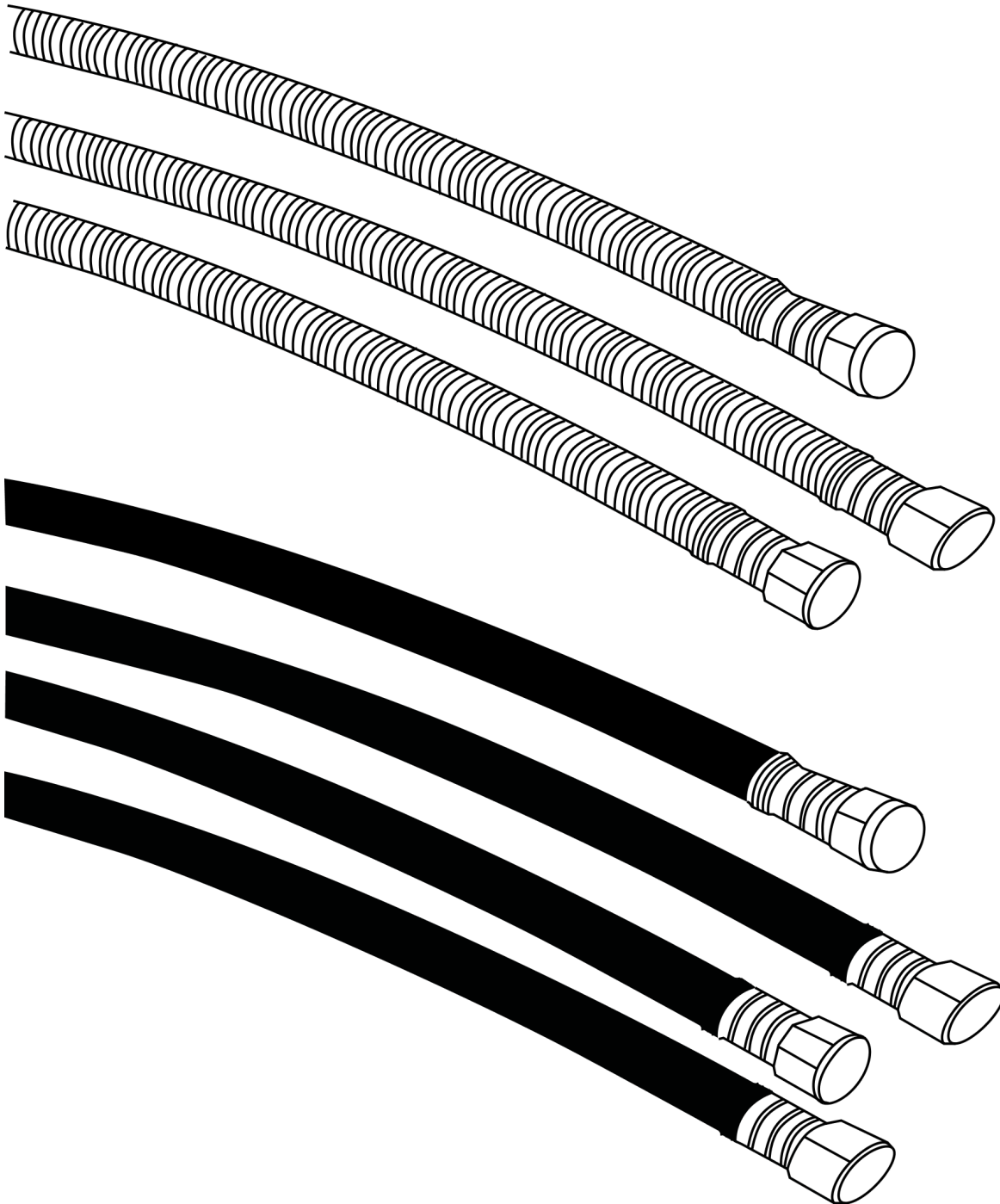
F | for Chisel paste cartridges 150 g (0.33 lb) to use in combination with Chisel paste container 45 kg (99 lb)

G | 15 kg

33 lb

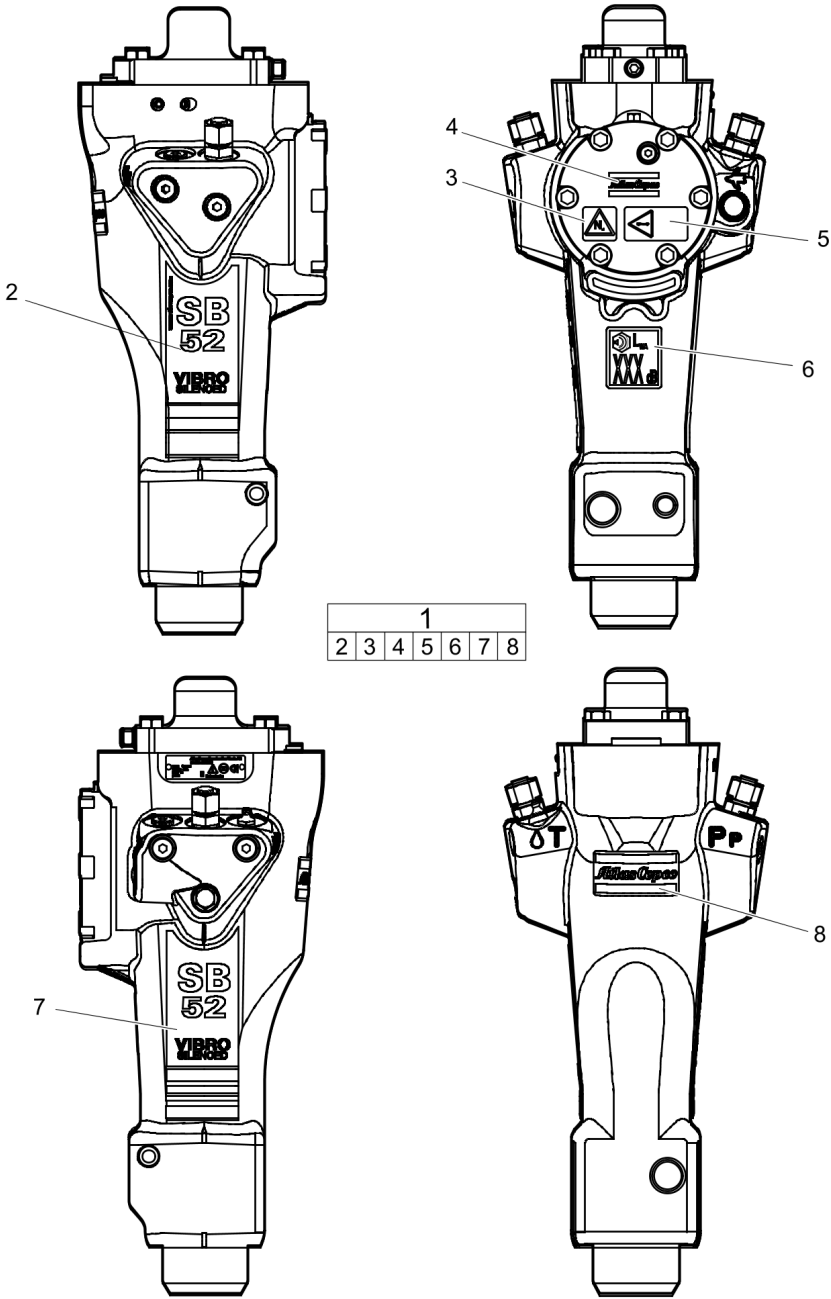
H | 45 kg

99 lb

Accessories Hydraulic hoses

Item	Part No.	Name	Qty	L
1	-	Heavy Duty Connection Hoses with Steel Spring Protection	1	
2	3363116917	Hydraulic hose, I.D. 12 (0.47"), both ends M 22 x 1.5, conical seal 24°, length 1000 mm (39.4 in.)	1	
3	3363115422	Hydraulic hose, I.D. 12 (0.47"), both ends M 22 x 1.5, conical seal 24°, length 1500 mm (59.05 in.)	1	
4	3361353551	Hydraulic hose, I.D. 12 (0.47"), both ends M 22 x 1.5, conical seal 24°, length 1750 mm (69 in.)	1	
5	3363115421	Hydraulic hose, I.D. 12 (0.47"), both ends M 22 x 1.5, conical seal 24°, length 2100 mm (82.68 in.)	1	
6	-	Standard Connection Hoses	1	
7	3363115420	Hydraulic hose, I.D. 12 (0.47"), both ends M 22 x 1.5, conical seal 24°, length 1500 mm (59.05 in.)	1	
8	3363491001	Hydraulic hose, I.D. 12 (0.47"), both ends M 22 x 1.5, conical seal 24°, length 1750 mm (69 in.)	1	
9	3363101421	Hydraulic hose, I.D. 12 (0.47"), both ends M 22 x 1.5, conical seal 24°, length 2100 mm (82.68 in.)	1	
10	3363098017	Additional fitting set	1	

Kits Label kit



Item	Part No.	Name	Qty	L
1	3315333591	Label kit	1	
.2	--	Product label	1	A
.3	--	Safety label	1	
.4	--	Product label	1	B
.4	--	Product label	1	B
.5	--	Safety label	1	
.5	--	Safety label	1	
.6	--	Sound power label	1	
.7	--	Product label	1	C
.7	--	Product label	1	C
.8	--	Product label	1	D
.8	--	Product label	1	D

Comments for Page: Label kit

(L)OCAL REMARKS

A | "SB 52"

B | "Atlas Copco"

C | "SB 52"

D | "Atlas Copco"

Kits Seal kit

NO EXPLODED VIEW
AVAILABLE
FOR THIS BOM

Item	Part No.	Name	Qty	L
1	3315333590	Seal kit	1	
.4	3315334200	Scraper ring	1	
.5	0663210800	O-ring, 54.5 x 3 mm, 2.15 x 0.12 in.	4	
.22	0661100048	Seal washer	1	
.23	0663212000	O-ring 13.3 x 2.4 mm (70 shore), 0.52 x 0.09 in.	1	
.27	0663903201	O-ring, 10.82 x 1.78 mm , 0.43 x 0.07 in. (90 shore)	1	
.28	0663905401	O-ring, 15.6 x 1.78 mm , 0.61 x 0.07 in. (90 shore)	1	
.33	0663903201	O-ring, 10.82 x 1.78 mm , 0.43 x 0.07 in. (90 shore)	1	
.34	0663905401	O-ring, 15.6 x 1.78 mm , 0.61 x 0.07 in. (90 shore)	1	
.36	0663211489	O-ring, 28.24 x 2.62 mm, 1.11 x 0.10 in.	2	
.38	0665909963	Wiper	1	
.39	0665070142	Piston rod seal	1	
.41	0663211364	O-ring 58 x 3 mm	8	
.43	0665070141	Piston rod seal	1	
.44	0663210653	O-ring, 76 x 2 mm, 2.99 x 0.08 in.	1	
.48	3315280800	Valve rubber	1	

Kits Accumulator repair kit

NO EXPLODED VIEW
AVAILABLE
FOR THIS BOM

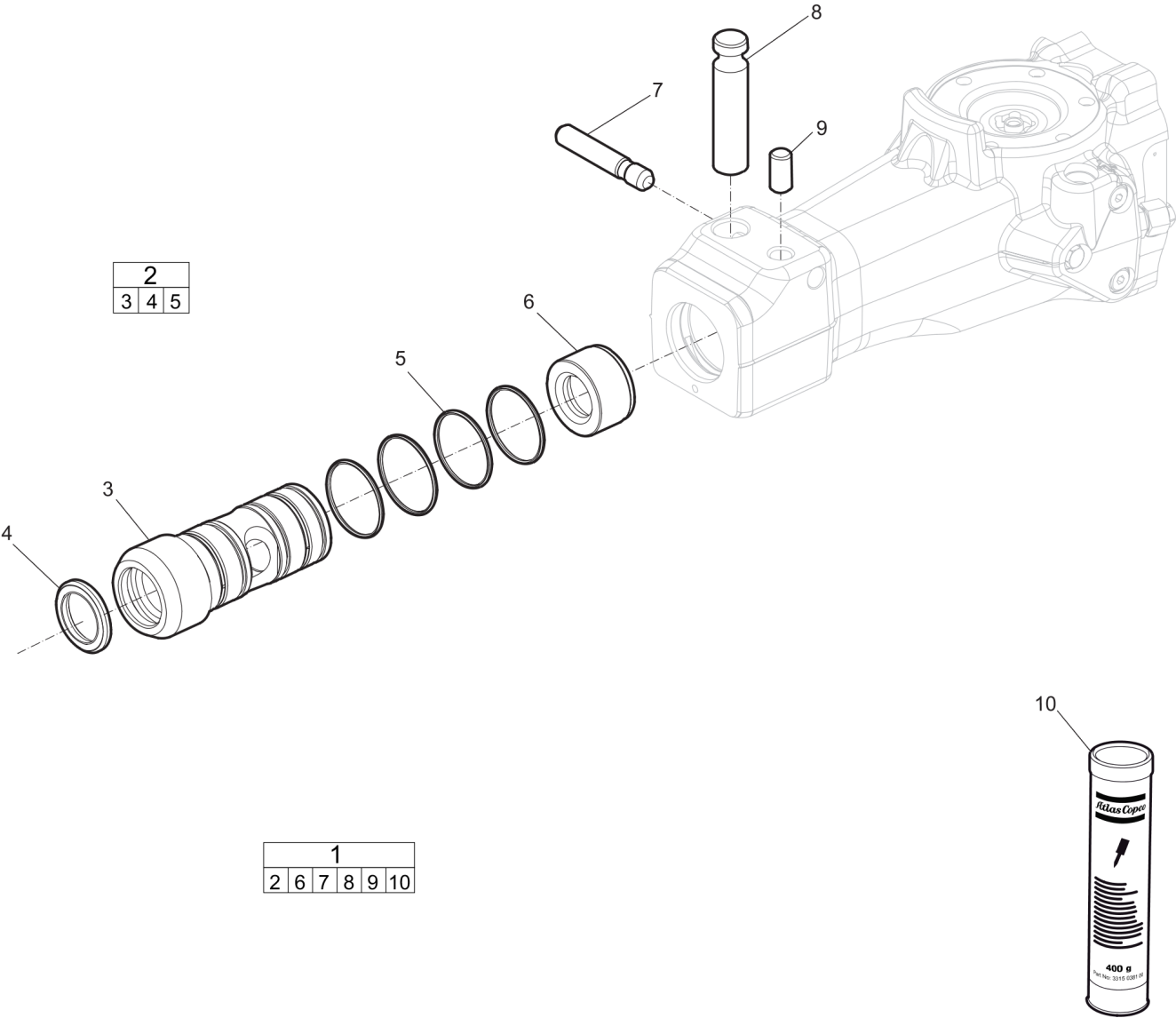
Item	Part No.	Name	Qty	L
1	3315334690	Accumulator repair kit	1	
.-	0686371805	Plug VSTI R 1/8-ED	1	A
.-	3315346600	Coil spring	1	
.-	3315339100	Diaphragm support	1	
.-	3315346200	Diaphragm	1	
.-	0211196548	Hexagon socket screw	6	
.-	0661100048	Seal washer	1	
.-	0663212000	O-ring 13.3 x 2.4 mm (70 shore), 0.52 x 0.09 in.	1	
.-	3315346400	Charge valve	1	

Comments for Page: Accumulator repair kit

(L)OCAL REMARKS

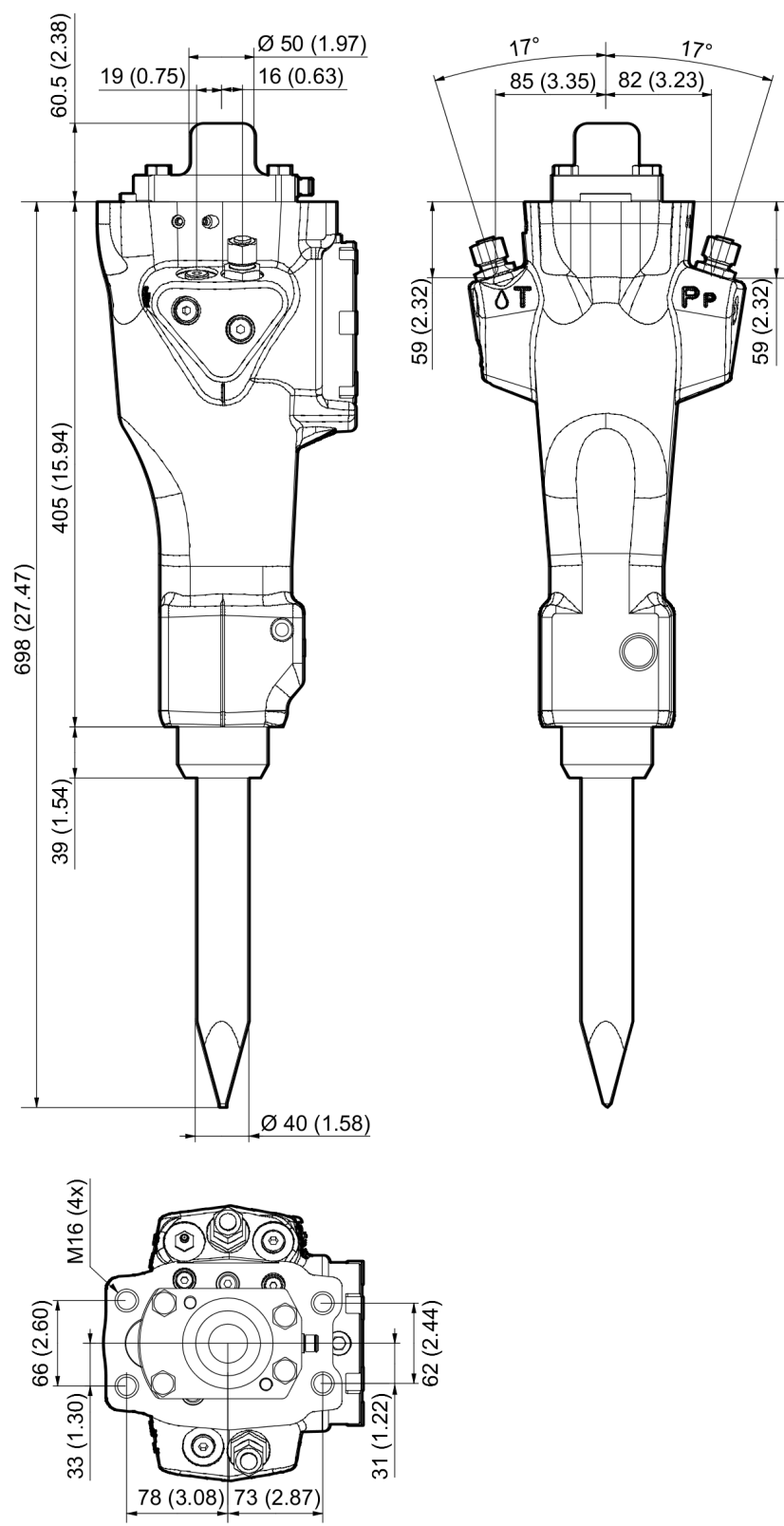
A | VSTI R 1/8-ED

Kits Lower hammer part kit



Item	Part No.	Name	Qty	L
1	3315352105	Lower hammer part kit	1	
.2	3315333780	Bushing, complete	1	
..3	-	Bushing	1	
..4	3315334200	Scraper ring	1	
..5	0663613501	O-ring, 54.5x3 mm (90 shore)	4	
.6	3315334500	Stop ring	1	
.7	3315333900	Lock pin	1	
.8	3315346500	Tool retainer	1	
.9	3315304600	Lock buffer	1	
.10	3315038100	Chisel paste cartridge, 400 g 0.88 lb	1	

Dimensions Dimensions SB 52



Any unauthorized use or copying of the contents or any part thereof is prohibited.
This applies in particular to trademarks, model denominations, part numbers, and
drawings.

