

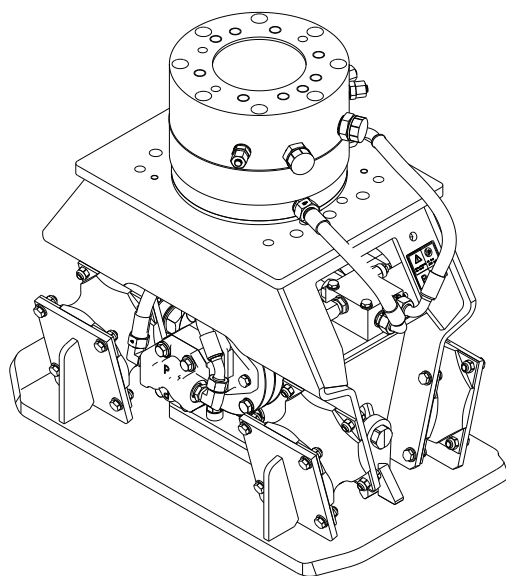
HC 350, HC 350 R

Spare parts list

Hydraulic compactor

HC 350 s/n BES169745 -

HC 350 R s/n BES169745 -



General information

This spare parts list applies to the following:

Part number	Description
8460060017	Hydraulic compactor HC 350
8460060018	Hydraulic compactor HC 350 R
8460060019	Hydraulic compactor HC 350 with HATCON (3G)
8460060020	Hydraulic compactor HC 350 R with HATCON (3G)
8460060029	Hydraulic compactor HC 350 with HATCON (LTE)
8460060030	Hydraulic compactor HC 350 R with HATCON (LTE)

Use only authorized parts. Any damage or malfunction caused by the use of unauthorized parts is not covered by Warranty or Product Liability. Any unauthorized use or copying of the contents or any part thereof is prohibited. This applies in particular to trademarks, model denominations, part numbers, and drawings.

Instructions for use

This spare parts list contains no safety regulations and is merely intended to assist in the ordering of spare parts.

For information about operating, servicing, or repairing, the relevant Safety and operating instructions must be consulted at all costs.

Please observe the safety instructions listed in the relevant Safety and operating instructions!

Instructions for ordering

It is essential to indicate the serial number of the hydraulic attachment when ordering spare parts!

Please note the full identification number of your hydraulic attachment.

Determine the quantity of individual parts which are required and need to be ordered. The order must indicate the following details:

- full identification code of the hydraulic attachment
- required quantity
- part number
- description

Service, repair and wear part kits

Kit list

Mechanical

Options / accessories

Kit list	1
Hydraulic compactor HC 350 non rotating	3
Hydraulic compactor HC 350 rotating	6
Rotation unit	10
Tightening torques	13
HATCON (Horizontal)	15
Dimensions HC 350 non rotating	17
Dimensions HC 350 rotating	18
Hydraulic hoses HC 350	20
Optional equipment part 1	23
Optional equipment part 2	25

Service, repair and wear part kits Kit list

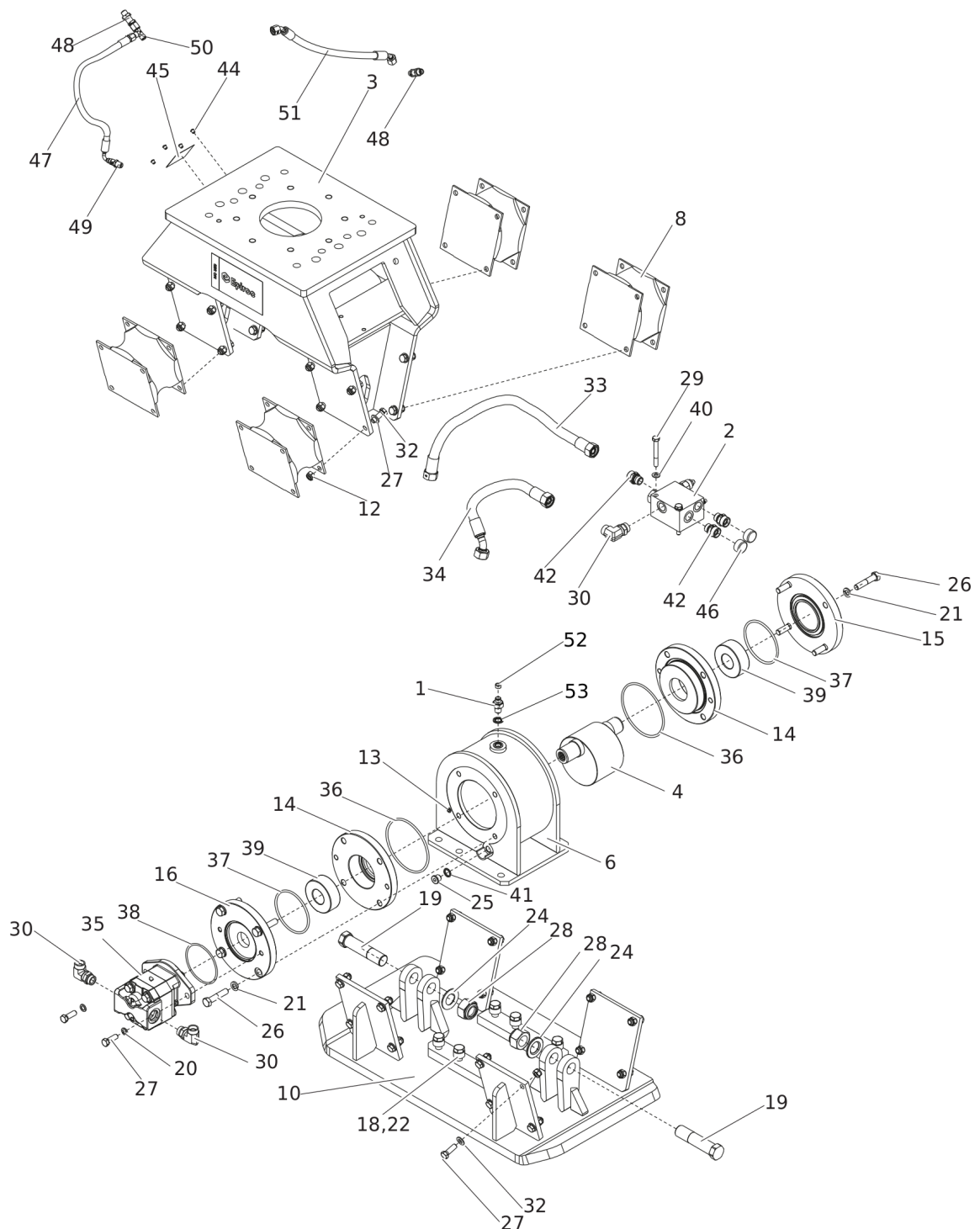
NO EXPLODED VIEW
AVAILABLE
FOR THIS BOM

Item	Part No.	Name	Qty	L
KIT	3376696231	LABEL KIT	1	
KIT	3376690036	SEAL KIT (HYDRAULIC MOTOR)	1	
KIT	3376690032	RUBBER ISOLATOR KIT	1	
6	3376100755	RUBBER ISOLATOR	4	
8	0291111200	LOCK NUT	32	
24	0147140203	SCREW, HEX HEAD	32	
26	0301235800	FLAT WASHER	32	
KIT	3376100997	SEAL KIT (ROTATOR)	1	
KIT	3316000312	DRAINLINE KIT HC 350	1	
47		HYDRAULIC HOSE	1	
48		BULKHEAD UNION	2	
49		ADAPTER	1	
50		T-ADAPTER	1	
51		HYDRAULIC HOSE	1	
KIT	3316000313	DRAINLINE KIT HC 350-R	1	
47		HYDRAULIC HOSE	1	
48		BULKHEAD UNION	1	
49		ADAPTER	1	
50		T-ADAPTER	1	
52		HYDRAULIC HOSE	1	
53		ADAPTER GE10 LR	1	

Comments for Page: Kit list

A I for HC's without rotation

Mechanical Hydraulic compactor HC 350 non rotating



Refer to the DocMine web page for most up-to-date information. The printed information might be outdated.

Fri Feb 16 13:55:08 UTC 2024

Item	Part No.	Name	Qty	L
1	3316000036	VENT VALVE	1	
2	3316000073	VALVE BLOCK, female thread 3/4" - 16 UNF	1	
3	3316000108	OUTER HOUSING	1	
4	3376690004	ROTOR	1	
6	3316000160	ROTOR HOUSING	1	
8	3376100755	RUBBER ISOLATOR	4	
10	3376696403	TAMPER PLATE	1	
12	0291111200	LOCK NUT	32	
13	0686612800	PLUG	1	
14	3376696012	BEARING RETAINER	2	
15	3376696013	BEARING COVER	1	
16	3363123142	BEARING COVER	1	
18	3316000063	SPRING WASHER	6	
19	3376696143	AXLE	2	A
20	3361850596	PAIR OF LOCK WASHERS	2	
21	0333217422	SPRING WASHER	8	
22	0147147803	SCREW	6	
24	0300027486	WASHER M30	2	
25	0686371626	PLUG	1	
26	0147144503	SCREW, HEX HEAD	8	
27	0147140203	SCREW, HEX HEAD	34	
28	0291112000	LOCK NUT	2	
29	0147137303	SCREW, HEX HEAD	2	
30	3316000114	ELBOW	3	
32	0301235800	FLAT WASHER	32	
33	3316000136	HYDRAULIC HOSE	1	
34	3316000137	HYDRAULIC HOSE	1	
35	3316000082	HYDRAULIC MOTOR	1	
36	0663211340	O-RING	2	
37	0663212018	O-RING	2	
38	3360314375	O-RING	1	
39	0506010022	BEARING	2	
40	0301234400	PLAIN WASHER	2	
41	3377016375	SEAL-RING - Bounded seal - Oil outlet 3/8 USS	1	
42	0580001846	PIPE COUPLING	3	
44	3315439145	PROTECTIVE PLUG HATCON	4	
45	3315439101	HATCON LABEL	1	

Refer to the DocMine web page for most up-to-date information. The printed information might be outdated.

Fri Feb 16 13:55:08 UTC 2024

Item	Part No.	Name	Qty	L
46	3361353486	CAP	2	
47		HYDRAULIC HOSE	1	B
48		BULKHEAD UNION	2	B
49		ADAPTER	1	B
50		T-ADAPTER	1	B
51		HYDRAULIC HOSE	1	B
52	3315280800	VALVE RUBBER	1	
53	6060008101	SEAL WASHER	1	

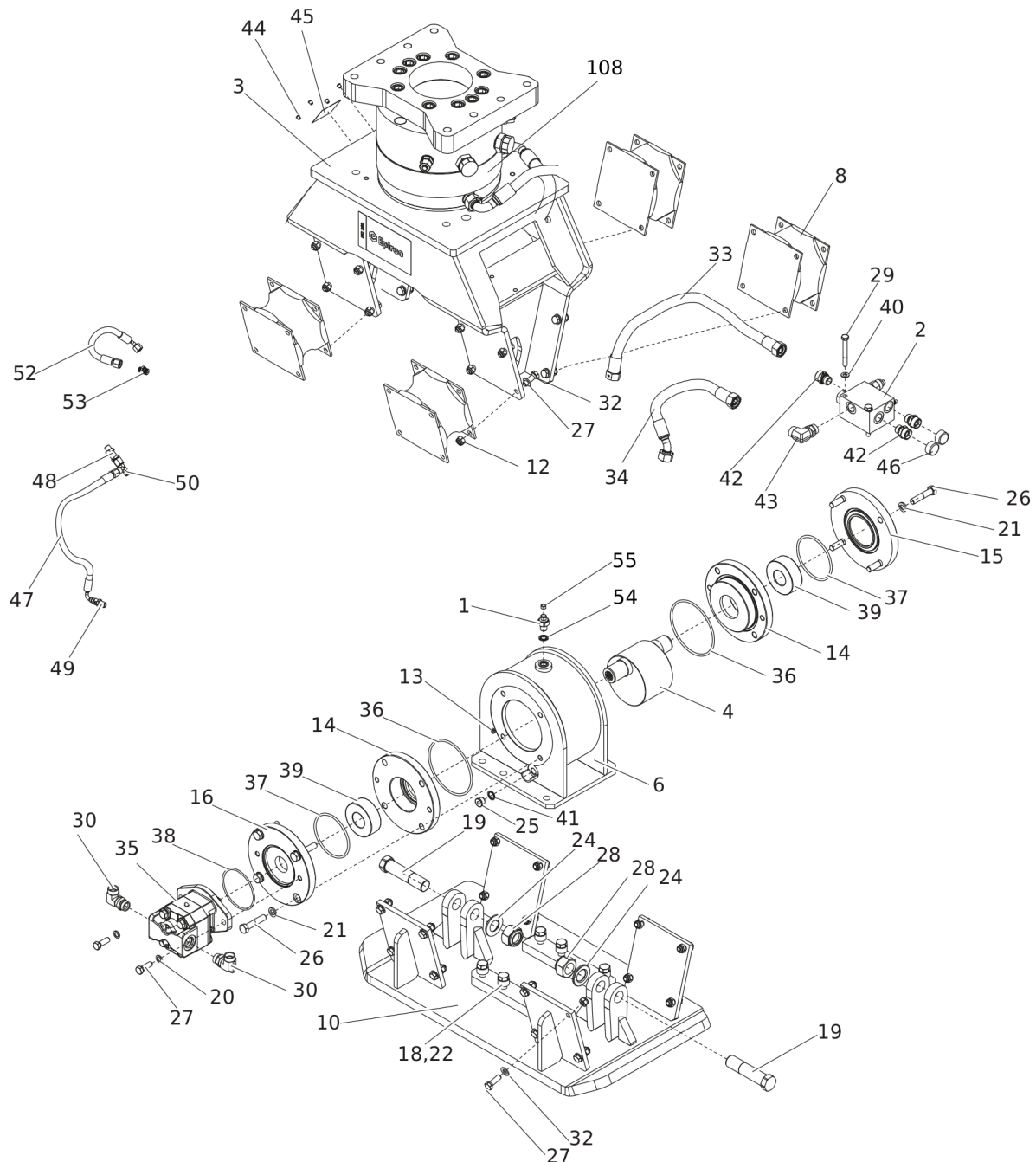
Comments for Page: Hydraulic compactor HC 350 non rotating

A | with items 18 and 23

B | part of drainline kit HC 350 non rotating (see page service, repair and wear part kits)

This page intentionally left blank

Mechanical Hydraulic compactor HC 350 rotating



Refer to the DocMine web page for most up-to-date information. The printed information might be outdated.

Fri Feb 16 13:55:09 UTC 2024

Item	Part No.	Name	Qty	L
1	3316000036	VENT VALVE	1	
2	3316000073	VALVE BLOCK, female thread 3/4" - 16 UNF	1	
3	3316000108	OUTER HOUSING	1	
4	3376690004	ROTOR	1	
6	3316000160	ROTOR HOUSING	1	
8	3376100755	RUBBER ISOLATOR	4	
10	3376696403	TAMPER PLATE	1	
12	0291111200	LOCK NUT	32	
13	0686612800	PLUG	1	
14	3376696012	BEARING RETAINER	2	
15	3376696013	BEARING COVER	1	
16	3363123142	BEARING COVER	1	
18	3316000063	SPRING WASHER	6	
19	3376696143	AXLE	2	A
20	3315019508	LOCK WASHER	2	
21	0333217422	SPRING WASHER	8	
22	0147147803	SCREW	6	
24	0300027486	WASHER M30	2	
25	0686371626	PLUG	1	
26	0147144503	SCREW, HEX HEAD	8	
27	0147140203	SCREW, HEX HEAD	34	
28	0291112000	LOCK NUT	2	
29	0147137303	SCREW, HEX HEAD	2	
30	3316000114	ELBOW	2	
32	0301235800	FLAT WASHER	32	
33	3316000136	HYDRAULIC HOSE	1	
34	3316000137	HYDRAULIC HOSE	1	
35	3316000082	HYDRAULIC MOTOR	1	
36	0663211340	O-RING	2	
37	0663212018	O-RING	2	
38	3360314375	O-RING	1	
39	0506010022	BEARING	2	
40	0301234400	PLAIN WASHER	2	
41	3377016375	SEAL-RING - Bounded seal - Oil outlet 3/8 USS	1	
42	0580001846	PIPE COUPLING	3	
43	3316000114	ELBOW	1	
44	3315439145	PROTECTIVE PLUG HATCON	4	

Refer to the DocMine web page for most up-to-date information. The printed information might be outdated.

Fri Feb 16 13:55:09 UTC 2024

Item	Part No.	Name	Qty	L
45	3315439101	HATCON LABEL	1	
46	3361353486	CAP	2	
47		HYDRAULIC HOSE	1	C
48		BULKHEAD UNION	1	C
49		ADAPTER	1	C
50		T-ADAPTER	1	C
52		HYDRAULIC HOSE	1	C
53		ADAPTER GE10 LR	1	C
54	6060008101	SEAL WASHER	1	
55	3315280800	VALVE RUBBER	1	
108	3376100987	ROTATION UNIT	1	B

Comments for Page: Hydraulic compactor HC 350 rotating

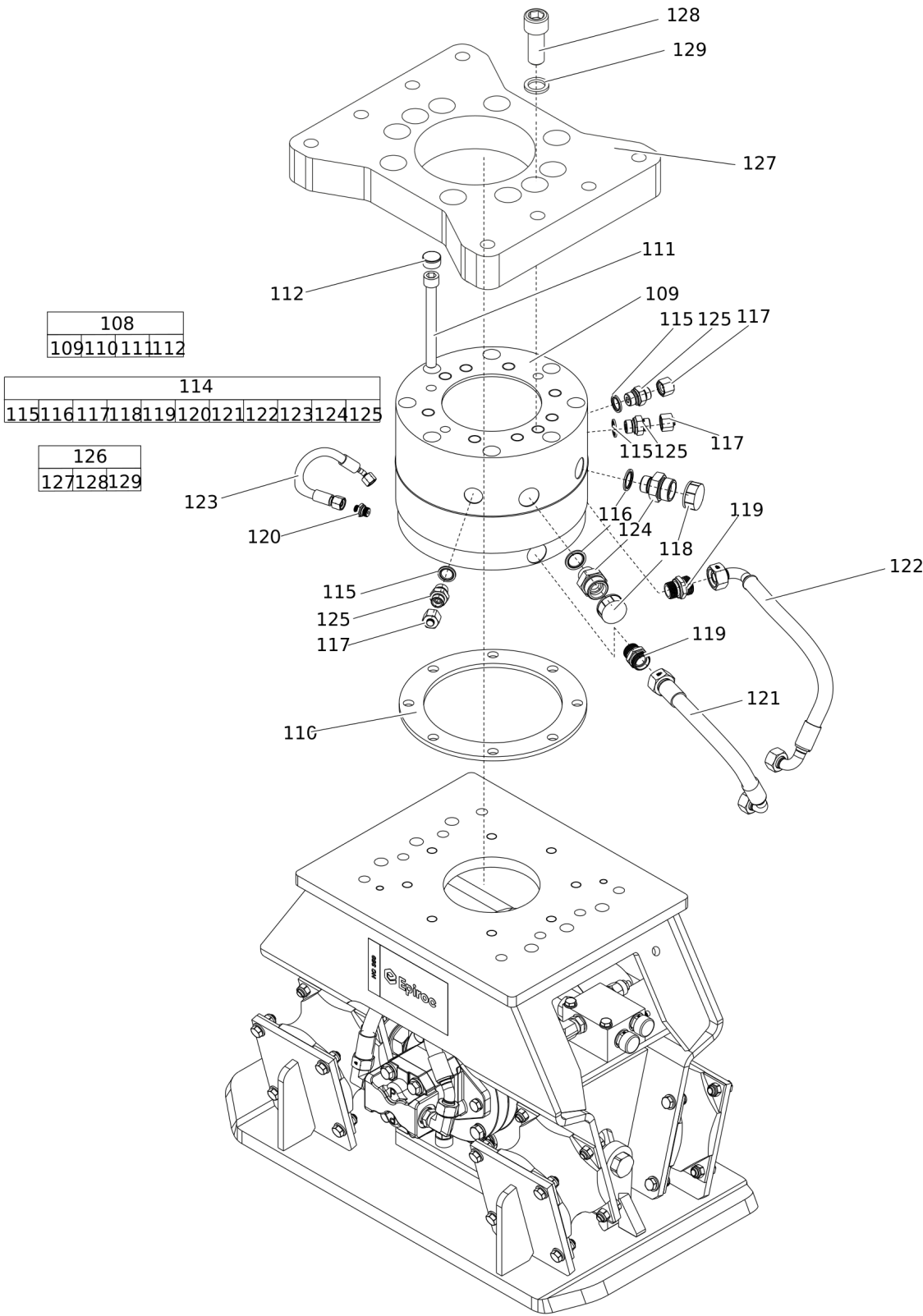
A | with items 18 and 23

B | see separate chapter

C | part of drainline kit HC 350 R (see page service, repair and wear part kits)

This page intentionally left blank

Mechanical Rotation unit



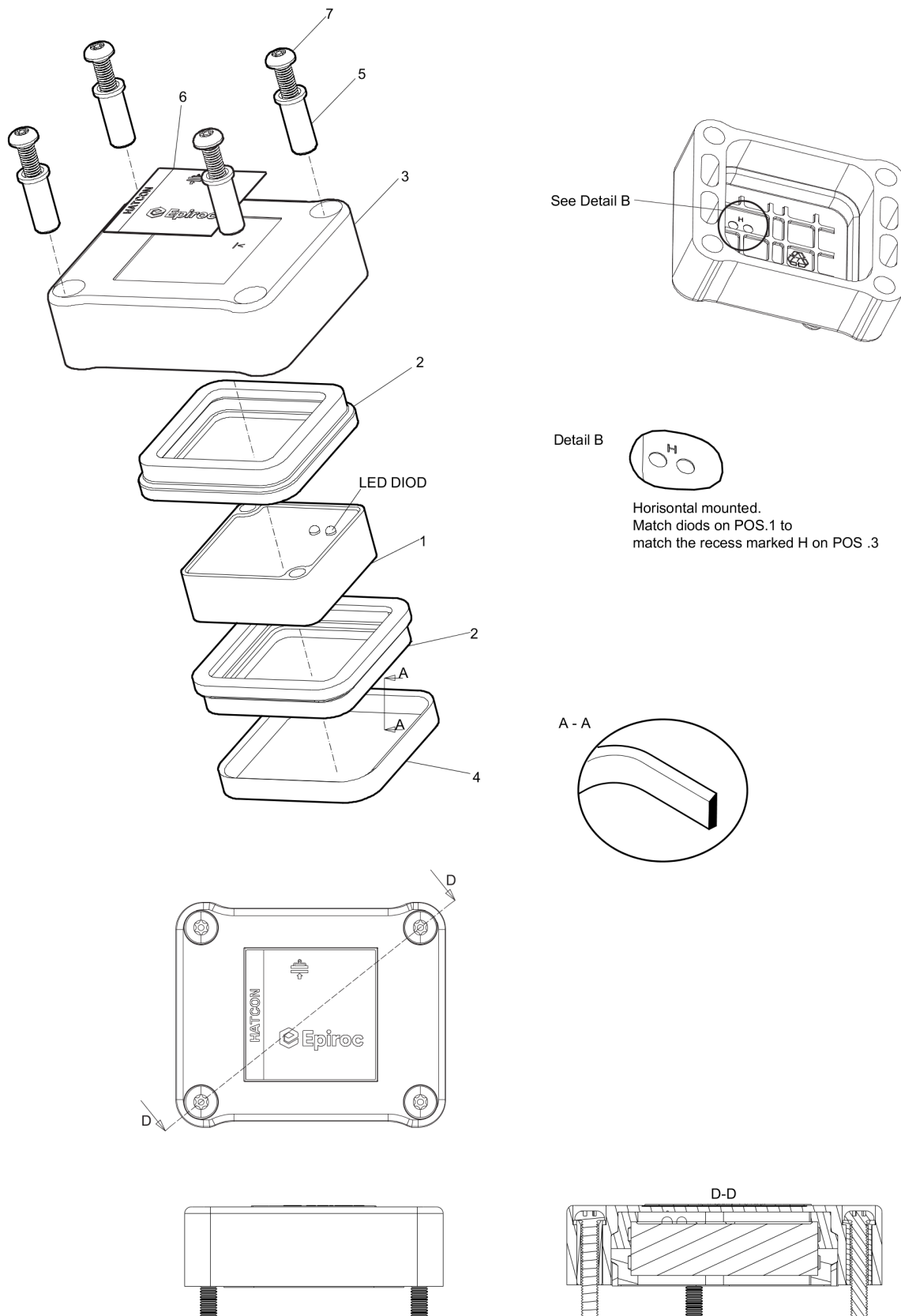
Item	Part No.	Name	Qty	L
108(109-112)	3376100987	ROTATION UNIT	1	
109		ROTATOR	1	
110		SPACER	1	
111		HEXAGON SOCKET SCREW	8	
112		PLUG	8	
114(115-125)	3316000234	HOSE/FITTING KIT	1	
115		SEAL WASHER 21.54x28.58x2.47	3	
116		SEAL WASHER 27.05x34.93x2.47	2	
117		PLUG	3	
118		CAP	2	
119		PIPE COUPLING	2	
120		ADAPTER GE10 LR	1	
121		HYDRAULIC HOSE (P)	1	
122		HYDRAULIC HOSE (T)	1	
123		HYDRAULIC HOSE	1	
124		FITTING	2	
125		FITTING	3	
126(127-129)	3363115683	SANDWICH PLATE COMPLETE	1	
127		SANDWICH PLATE	1	
128	3360026782	ALLEN SCREW	10	
129	3361850748	PAIR OF LOCK WASHERS	10	

Mechanical Tightening torques

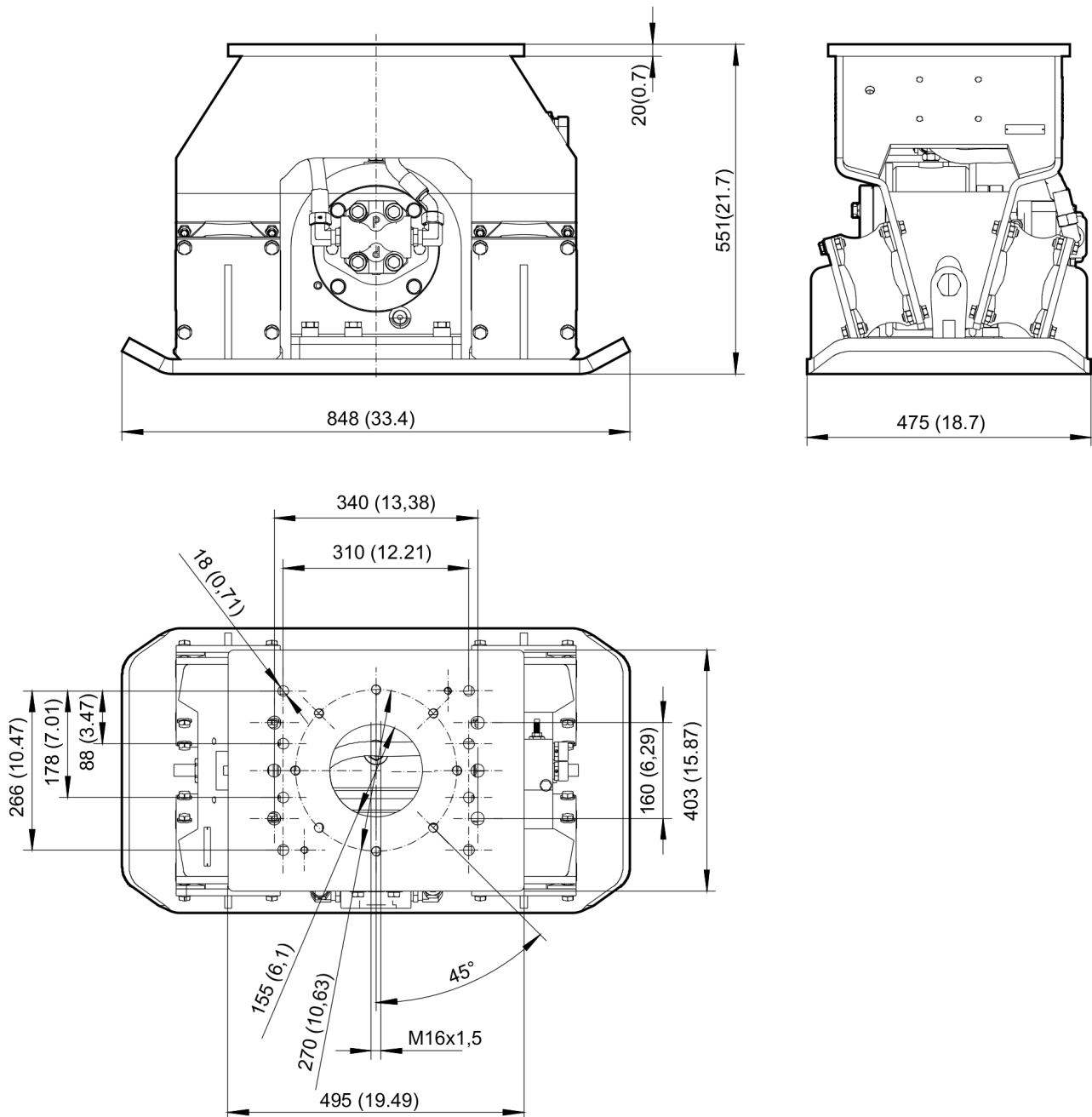
NO EXPLODED VIEW
AVAILABLE
FOR THIS BOM

Item	Part No.	Name	Qty	L
2	-	OPEN-ENDED WRENCH - pretighten finger tight, then 1 - 2 turns tighten with the open-ended wrench	-	
8	-	OPEN-ENDED WRENCH - 93 Nm (69 ft lbf)	-	
9	-	ALLEN KEY - pretighten finger tight, then 1 - 2 turns tighten with the Allen key	-	
19	-	ALLEN KEY - 30.5 Nm (22.5 ft lbf)	-	
20	-	OPEN-ENDED WRENCH - 20 Nm (15 ft lbf)	-	
21	-	OPEN-ENDED WRENCH - 148 Nm (109 ft lbf)	-	
22	-	OPEN-ENDED WRENCH - 230 Nm (170 ft lbf)	-	
24	-	OPEN-ENDED WRENCH - 93 Nm (69 ft lbf)	-	

Mechanical HATCON (Horizontal)

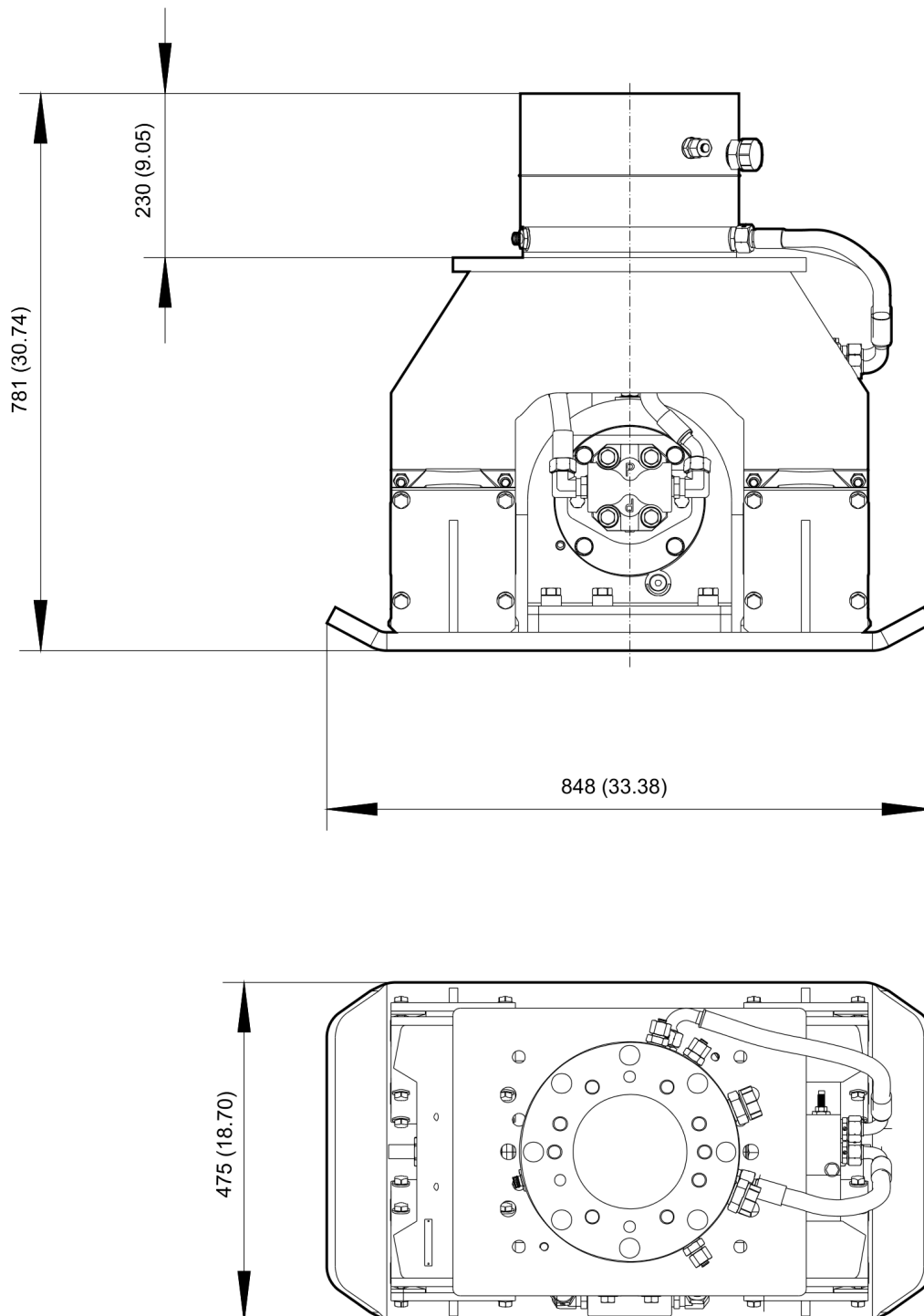


Item	Part No.	Name	Qty	L
1		TRACKING MODULE HATCON	1	
2	3315439130	DAMPER HATCON	2	
3	3315439110	HOUSING TYPE 1 HATCON	1	
4	3315439140	LOCK RING HATCON	1	
5	3315439120	SLEEVE HATCON	4	
6	3315439100	PRODUCT LABEL HATCON	1	
7	3315442600	SCREW HATCON	4	



This page intentionally left blank

Mechanical Dimensions HC 350 rotating



Refer to the DocMine web page for most up-to-date information. The printed information might be outdated.

Fri Feb 16 13:55:11 UTC 2024

This page intentionally left blank

Options / accessories Hydraulic hoses HC 350

NO EXPLODED VIEW
AVAILABLE
FOR THIS BOM

Item	Part No.	Name	Qty	L
	-	PRESSURE LINE / TANK LINE Rotation		
-	3361353551	HYDRAULIC HOSE, I.D. 12 (0.47"), both ends M22 x 1.5, conical seal 24°, length 1750 mm (69 in.)	2	
-	3363085946	HYDRAULIC HOSE, I.D. 12 (0.47"), both ends M22 x 1.5, conical seal 24°, length 2100 mm (83 in.)	2	
	-	PRESSURE LINE / TANK LINE Non-Rotation		
	3360995717	HYDRAULIC HOSE, both ends 18 L (M26 x 1.5) length 1500 mm (59 in.)	1	
	3363115426	HYDRAULIC HOSE, both ends 18 L (M26x1.5) length 1750 mm (68 in.)	1	
	3362235159	HYDRAULIC HOSE, both ends 18 L (M26 x 1.5) length 2000 mm (79 in.)	1	
	3363083313	HYDRAULIC HOSE, both ends 18 L (M26 x 1.5) length 2400 mm (95 in.)	1	
	-	ACCESSORIES TO THE HYDRAULIC HOSES (JIC)		
	05705000501	JIC ADAPTER	2	A
	-	DRAINAGE FOR HYDRAULIC MOTOR		
-	3363119625	HYDRAULIC HOSE, I.D. 8 (3/8"), M20 x 1.5 conical seal 24° - 9/16-18 JIC, length 2800 mm (110 in.)	1	

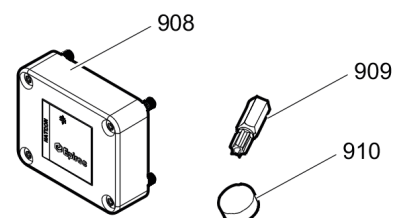
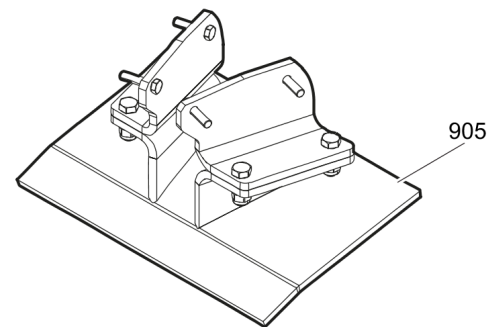
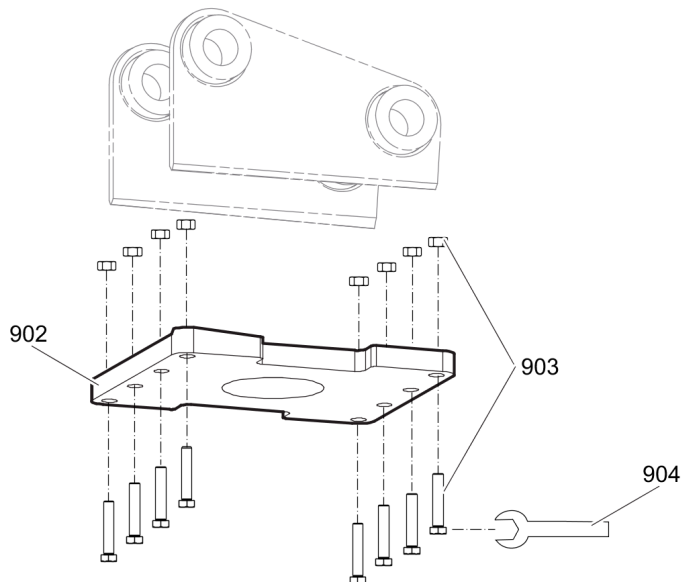
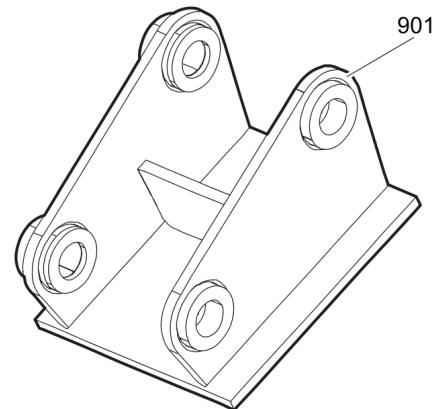
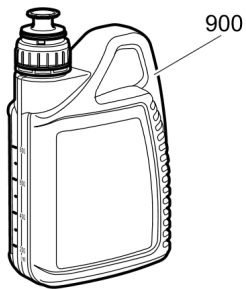
Comments for Page: Hydraulic hoses HC 350

Note

A I Remove the genuine fittings carrier side from the valve block before mounting the fitting set.

B I T-line

Options / accessories Optional equipment part 1



Item	Part No.	Name	Qty	L
900		COMPACTOR OIL	1	A
901		ADAPTER PLATE matching the carrier. Consult the authorized Customer Center/Dealer in your area.	1	
902	3315295100	BASE PLATE	1	
903	3315296490	BOLT KIT	1	
904	3360430655	OPEN END SPANNER (24/27 mm)	1	
905	3376696108	BACKFILL BLADE KIT	1	
908	3315442500	HATCON KIT 1 (3G)	1	
909	3315439105	SECURITY BIT HATCON	1	
910	3315439106	MAGNET HATCON	1	

Comments for Page: Optional equipment part 1

A | Oil specification

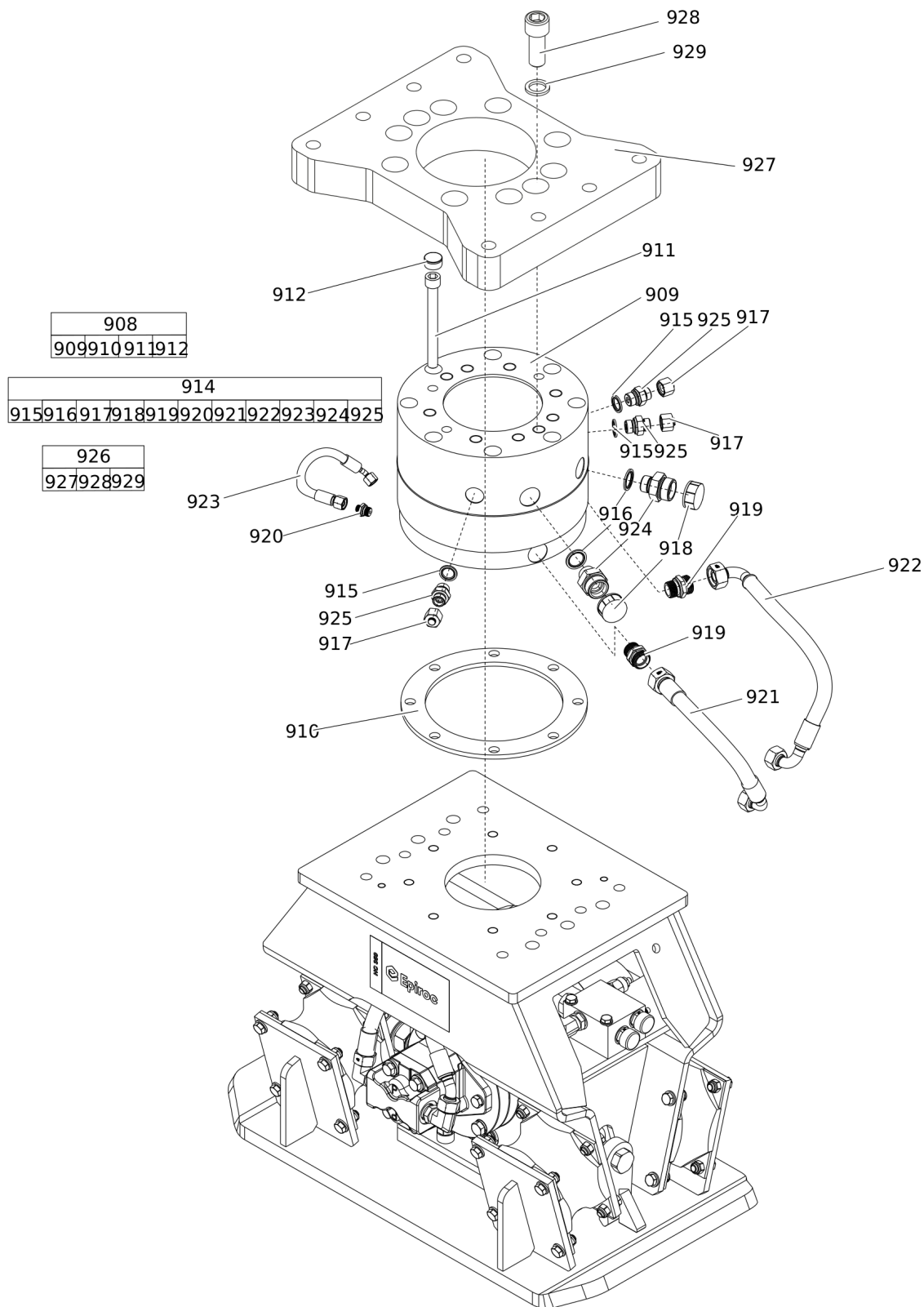
Application: Engine oil

Type: Mineral oil

Viscosity: SAE 15W-40

API Service Classification: CI-4

Options / accessories Optional equipment part 2



Refer to the DocMine web page for most up-to-date information. The printed information might be outdated.

Fri Feb 16 13:55:14 UTC 2024

Item	Part No.	Name	Qty	L
907(908-925)	3316000231	ROTATION KIT HC 350	1	
908(909-912)	3376100987	ROTATION UNIT	1	
909		ROTATOR	1	
910		SPACER	1	
911		HEXAGON SOCKET SCREW	8	
912		PLUG	8	
914(915-925)	3316000234	HOSE/FITTING KIT	1	
915		SEAL WASHER 21.54x28.58x2.47	3	
916		SEAL WASHER 27.05x34.93x2.47	2	
917		PLUG	3	
918		CAP	2	
919	0580001659	PIPE COUPLING	1	
920	5750535330	ADAPTER GE10 LR	1	
921	3316000224	HYDRAULIC HOSE (P)	1	
922	3316000225	HYDRAULIC HOSE (T)	1	
923	3316000221	HYDRAULIC HOSE	1	
924	3376520023	FITTING	2	
925		FITTING	3	
926(927-929)	3363115683	SANDWICH PLATE COMPLETE	1	
927		SANDWICH PLATE	1	
928	3360026782	ALLEN SCREW	10	
929	3361850748	PAIR OF LOCK WASHERS	10	

Any unauthorized use or copying of the contents or any part thereof is prohibited.
This applies in particular to trademarks, model denominations, part numbers, and drawings.