

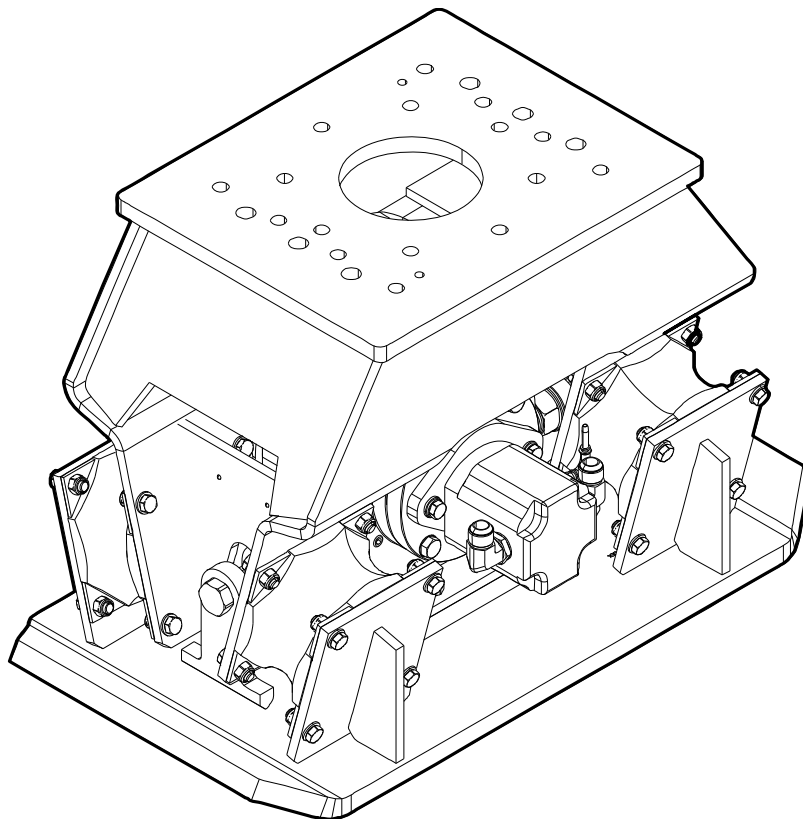
HC 350, HC 350 R

Spare parts list

Hydraulic compactor

HC 350 s/n BES132129 –BES169744

HC 350 R s/n BES132129 –BES169744



General information

This spare parts list applies to the following:

Part number	Description
1826101747	HC 350 non rotating
8460060001	HC 350 R rotating
8460060002	HC 350 non rotating with HATCON
8460060003	HC 350 R rotating with HATCON

Use only authorized parts. Any damage or malfunction caused by the use of unauthorized parts is not covered by Warranty or Product Liability. Any unauthorized use or copying of the contents or any part thereof is prohibited. This applies in particular to trademarks, model denominations, part numbers, and drawings.

Instructions for use

This spare parts list contains no safety regulations and is merely intended to assist in the ordering of spare parts.

For information about operating, servicing, or repairing, the relevant Safety and operating instructions must be consulted at all costs.

Please observe the safety instructions listed in the relevant Safety and operating instructions!

Instructions for ordering

It is essential to indicate the serial number of the hydraulic attachment when ordering spare parts!

Please note the full identification number of your hydraulic attachment.

Determine the quantity of individual parts which are required and need to be ordered. The order must indicate the following details:

- full identification code of the hydraulic attachment
- required quantity
- part number
- description

Service, repair and wear part kits

Kit list

Mechanical

Options / accessories

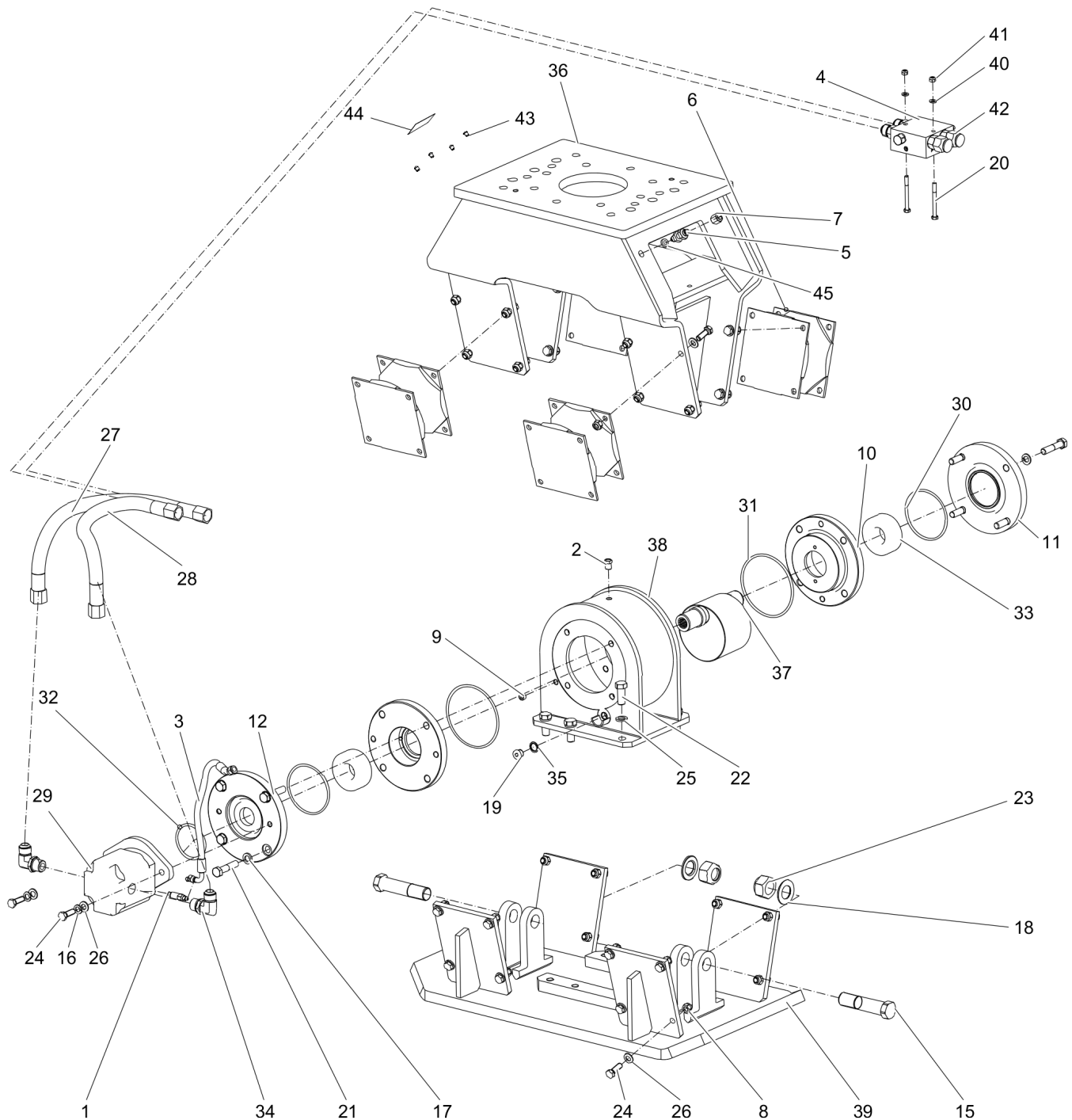
Kit list	1
Hydraulic compactor HC 350 non rotating	3
Hydraulic compactor HC 350 rotating	6
Rotation unit	10
Tightening torques	13
HATCON (Horizontal)	15
Dimensions HC 350 non rotating	17
Dimensions HC 350 rotating	18
Hydraulic hoses	20
Optional equipment part 1	23
Optional equipment part 2	25

Service, repair and wear part kits Kit list

NO EXPLODED VIEW
AVAILABLE
FOR THIS BOM

Item	Part No.	Name	Qty	L
KIT	3376696231	Label kit	1	
KIT	3376690036	Seal kit (Hydraulic motor)	1	
KIT	3376690032	Rubber isolator kit	1	
6	3376100755	Rubber isolator	4	
8	0291111200	Lock nut	32	
24	0147140203	SCREW, HEX HEAD	32	
26	0301235800	FLAT WASHER	32	
KIT	3376100997	Seal kit (Rotator)	1	

Mechanical Hydraulic compactor HC 350 non rotating



Item	Part No.	Name	Qty	L
1	3376696146	Adapter	1	
2	3376100779	Vent valve	1	
3	3376101522	Hydraulic hose	1	
4	3376690007	Valve block, female thread 3/4" - 16 UNF	1	
5	3176649600	NIPPLE	1	
6	3376100755	Rubber isolator	4	
7	3176542900	CAP	1	
8	0291111200	Lock nut	32	
9	0686612800	PLUG	1	
10	3376696012	Bearing retainer	2	
11	3376696013	Bearing cover	1	
12	3363123142	Bearing cover	1	
15	3376696143	Axle	2	A
16	0333217421	SPRING WASHER	2	
17	3376100771	Washer	8	
18	3376110003	Washer	2	
19	0686371626	PLUG	1	
20	3376100568	Hexagon head bolt	2	
21	0147144503	SCREW, HEX HEAD	8	
22	0147147803	Screw	6	
23	3376100146	Nut	2	
24	0147140203	SCREW, HEX HEAD	34	
25	3316000063	SPRING WASHER	6	
26	0301235800	FLAT WASHER	34	
27	3376101486	Hydraulic hose	1	
28	3376101519	Hydraulic hose	1	
29	3376100752	Hydraulic motor	1	
30	3376100060	O-ring	2	
31	0663211340	O-RING	2	
32	3360314375	O-ring	1	
33	0506010022	Bearing	2	
34	3176657100	ELBOW	2	
35	3377016375	Seal ring - Bounded seal - Oil outlet 3/8 USS	1	
36	3376696406	Outer housing	1	
37	3376690004	Rotor	1	
38	3376696409	Rotor housing	1	
39	3376696403	Tamper plate	1	

Refer to the DocMine web page for most up-to-date information. The printed information might be outdated.

Wed Jan 12 12:52:52 UTC 2022

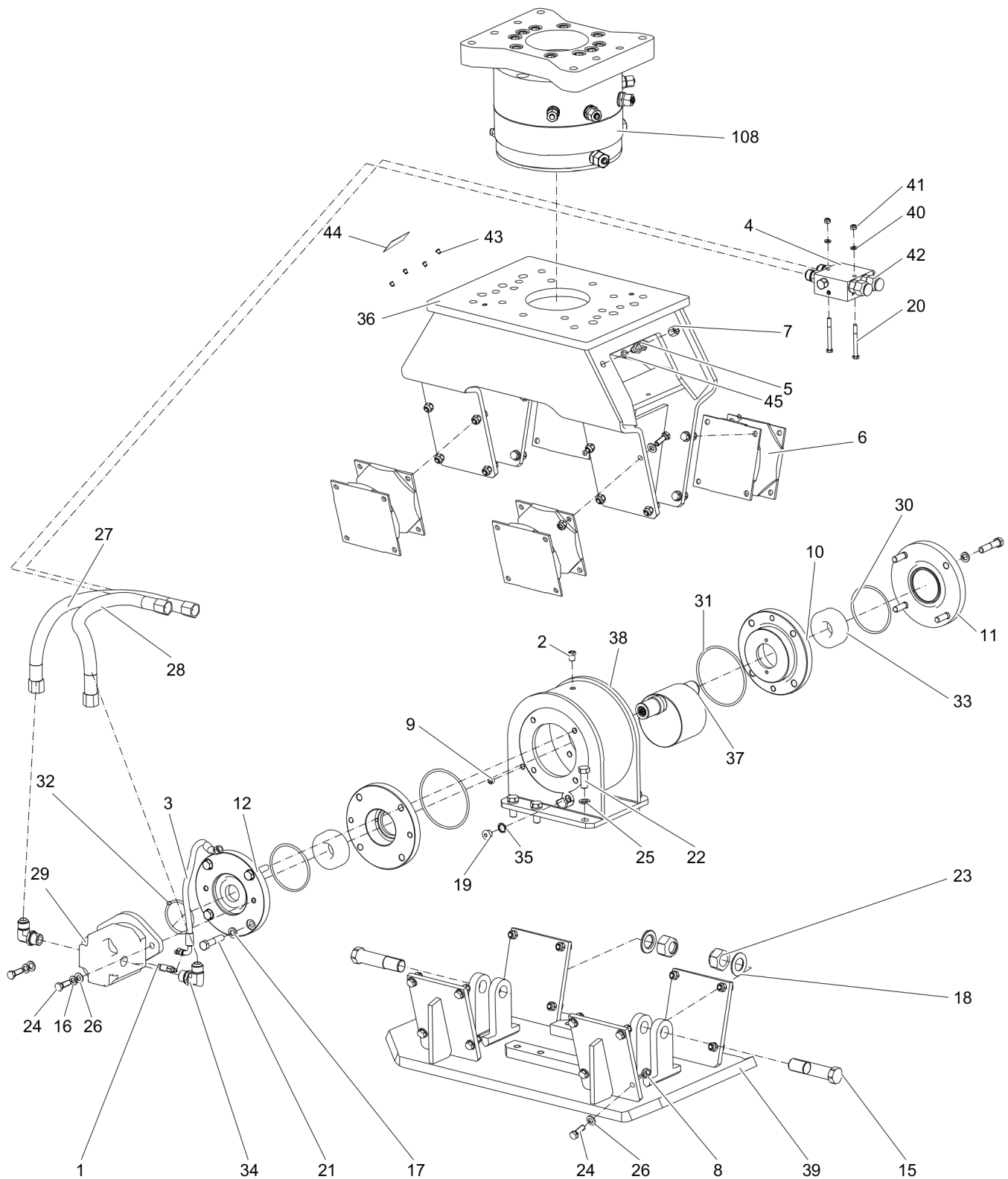
Item	Part No.	Name	Qty	L
40	0301233500	PLAIN WASHER	2	
41	0291111000	LOCK NUT	2	
42	3376100754	Fitting, male thread 1 1/16" - 16" UNF 37° JIC	4	
43	3315439145	Protective plug HATCON	4	
44	3315439101	HATCON label	1	
45	5750534088	Washer	1	

Comments for Page: Hydraulic compactor HC 350 non rotating

A | with items 18 and 23

This page intentionally left blank

Mechanical Hydraulic compactor HC 350 rotating



Item	Part No.	Name	Qty	L
1	3376696146	Adapter	1	
2	3376100779	Vent valve	1	
3	3376101522	Hydraulic hose	1	
4	3376690007	Valve block, female thread 3/4" - 16 UNF	1	
5	3176649600	NIPPLE	1	
6	3376100755	Rubber isolator	4	
7	3176542900	CAP	1	
8	0291111200	Lock nut	32	
9	0686612800	PLUG	1	
10	3376696012	Bearing retainer	2	
11	3376696013	Bearing cover	1	
12	3363123142	Bearing cover	1	
15	3376696143	Axle	2	A
16	0333217421	SPRING WASHER	2	
17	3376100771	Washer	8	
18	3376110003	Washer	2	
19	0686371626	PLUG	1	
20	3376100568	Hexagon head bolt	2	
21	0147144503	SCREW, HEX HEAD	8	
22	0147147803	Screw	6	
23	3376100146	Nut	2	
24	0147140203	SCREW, HEX HEAD	34	
25	3316000063	SPRING WASHER	6	
26	0301235800	FLAT WASHER	34	
27	3376101486	Hydraulic hose	1	
28	3376101519	Hydraulic hose	1	
29	3376100752	Hydraulic motor	1	
30	3376100060	O-ring	2	
31	0663211340	O-RING	2	
32	3360314375	O-ring	1	
33	0506010022	Bearing	2	
34	3176657100	ELBOW	2	
35	3377016375	Seal ring - Bounded seal - Oil outlet 3/8 USS	1	
36	3376696406	Outer housing	1	
37	3376690004	Rotor	1	
38	3376696409	Rotor housing	1	
39	3376696403	Tamper plate	1	

Refer to the DocMine web page for most up-to-date information. The printed information might be outdated.

Wed Jan 12 12:52:54 UTC 2022

Item	Part No.	Name	Qty	L
40	0301233500	PLAIN WASHER	2	
41	0291111000	LOCK NUT	2	
42	3376100754	Fitting, male thread 1 1/16" - 16" UNF 37° JIC	4	
43	3315439145	Protective plug HATCON	4	
44	3315439101	HATCON label	1	
45	5750534088	Washer	1	
108	1826101823	Rotation unit	1	B

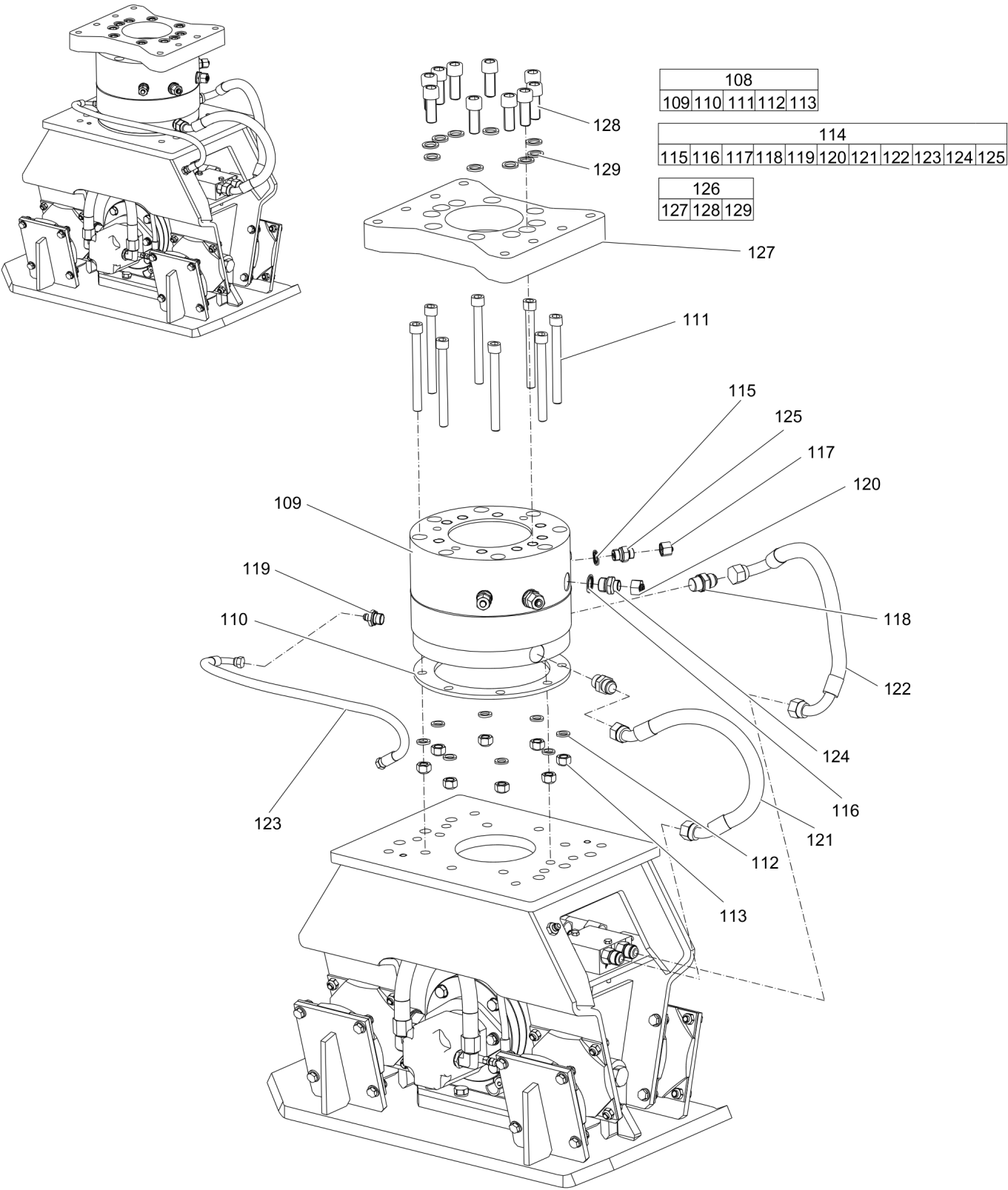
Comments for Page: Hydraulic compactor HC 350 rotating

A | with items 18 and 23

B | see separate chapter

This page intentionally left blank

Mechanical Rotation unit



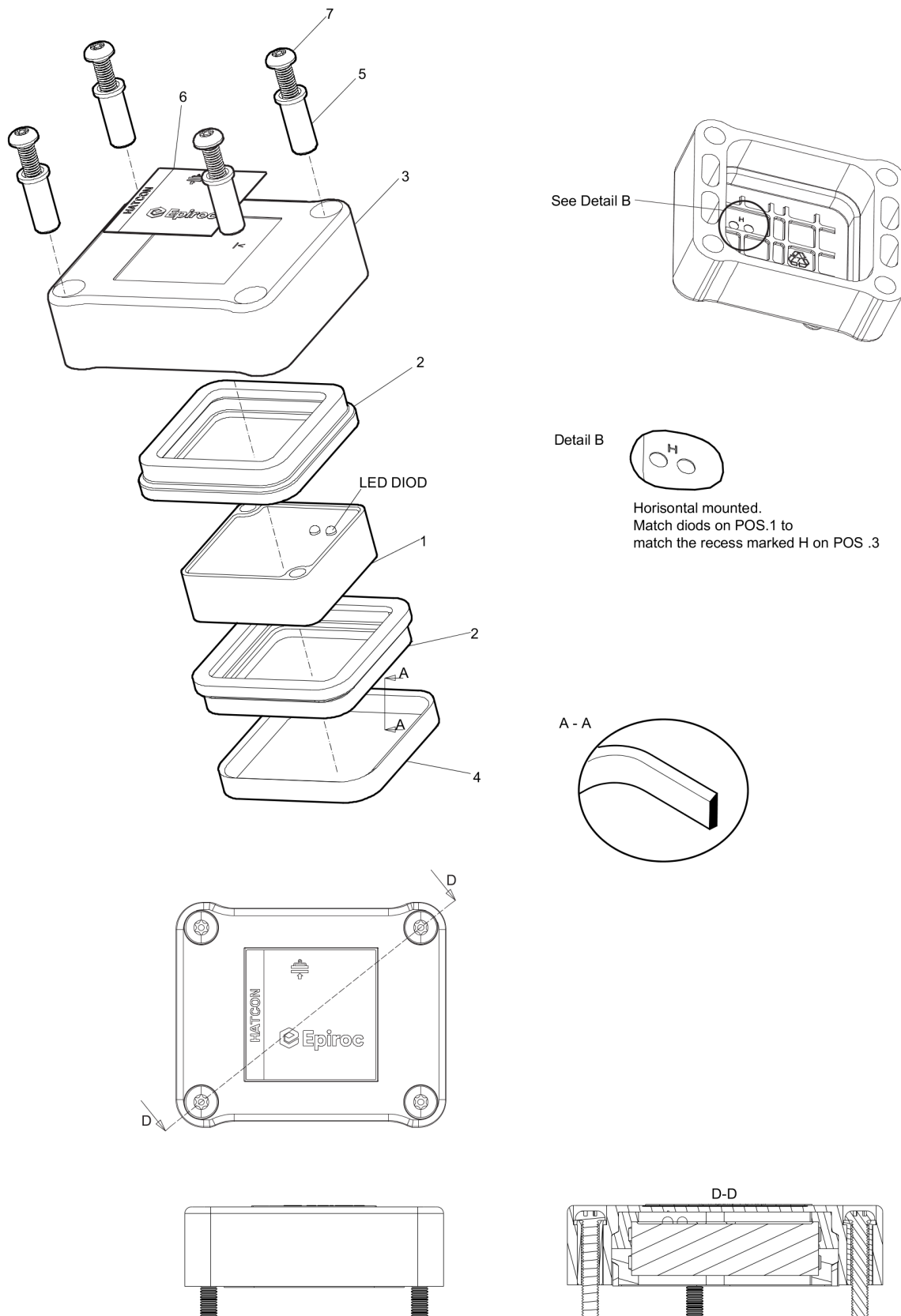
Item	Part No.	Name	Qty	L
108(109-113)	1826101823	Rotation unit	1	
109		Rotator	1	
110		Spacer	1	
111		Allen screw	8	
112		LOCK WASHER	8	
113		Hexagon nut, M16 A2K	8	
114(115-125)	3376696437	Hose/Fitting kit	1	
115		U-seal ring 1/2	3	
116		Seal	2	
117		Plug	3	
118		Fitting	2	
119		Fitting	1	
120		Plug	2	
121		Hydraulic hose	1	
122		Hydraulic hose	1	
123		Hydraulic hose	1	
124		Fitting	2	
125		Fitting	3	
126(127-129)	3363115683	Sandwich plate complete	1	
127		Sandwich plate	1	
128	3360026782	Allen screw	10	
129	3361850748	Pair of lock washers	10	

Mechanical Tightening torques

NO EXPLODED VIEW
AVAILABLE
FOR THIS BOM

Item	Part No.	Name	Qty	L
2	-	Open-ended wrench - pretighten finger tight, then 1 - 2 turns tighten with the open-ended wrench	-	
8	-	Open-ended wrench - 93 Nm (69 ft lbf)	-	
9	-	Allen key - pretighten finger tight, then 1 - 2 turns tighten with the Allen key	-	
19	-	Allen key - 30.5 Nm (22.5 ft lbf)	-	
20	-	Open-ended wrench - 20 Nm (15 ft lbf)	-	
21	-	Open-ended wrench - 148 Nm (109 ft lbf)	-	
22	-	Open-ended wrench - 230 Nm (170 ft lbf)	-	
24	-	Open-ended wrench - 93 Nm (69 ft lbf)	-	

Mechanical HATCON (Horizontal)

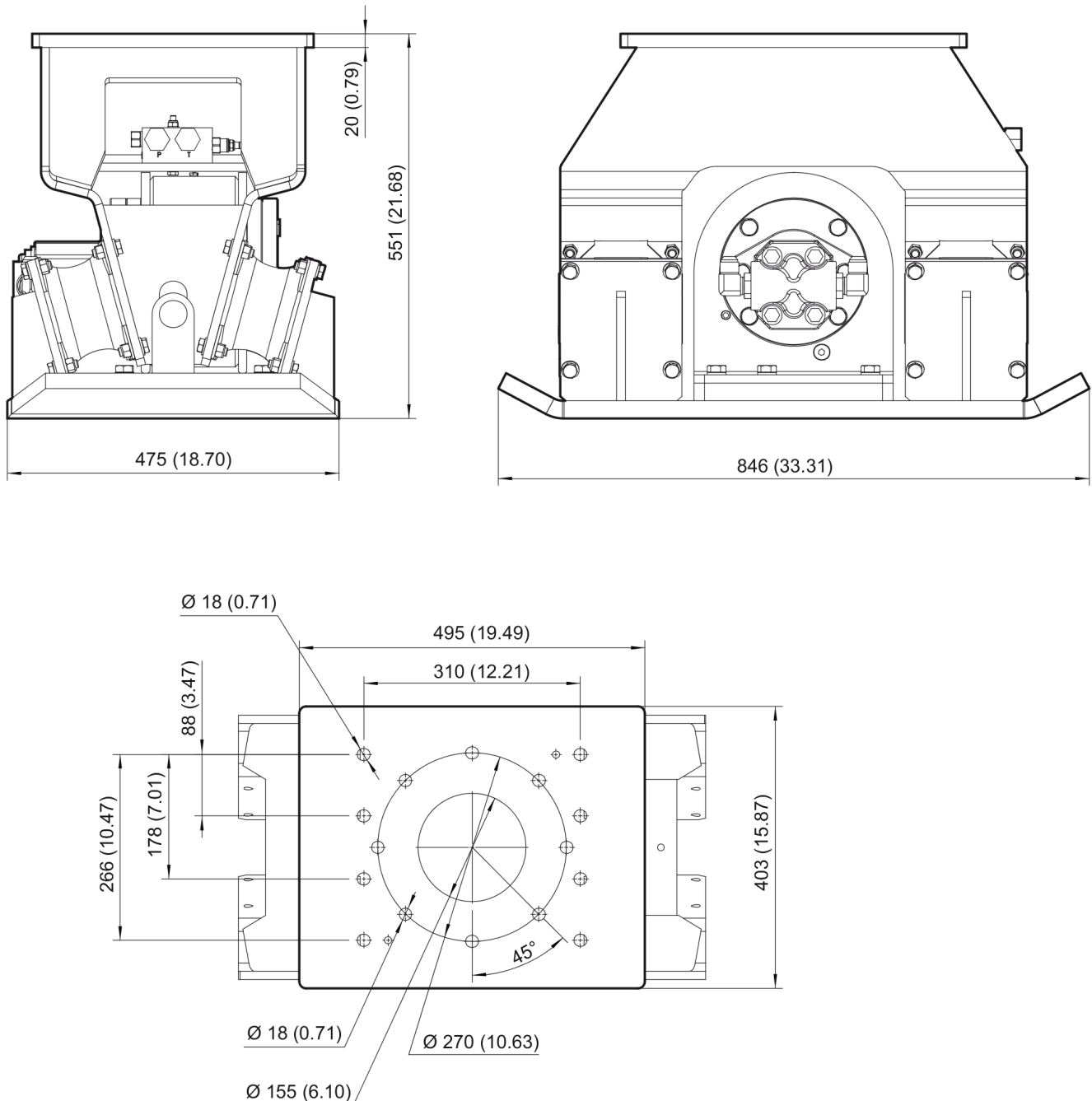


Refer to the DocMine web page for most up-to-date information. The printed information might be outdated.

Wed Jan 12 12:52:56 UTC 2022

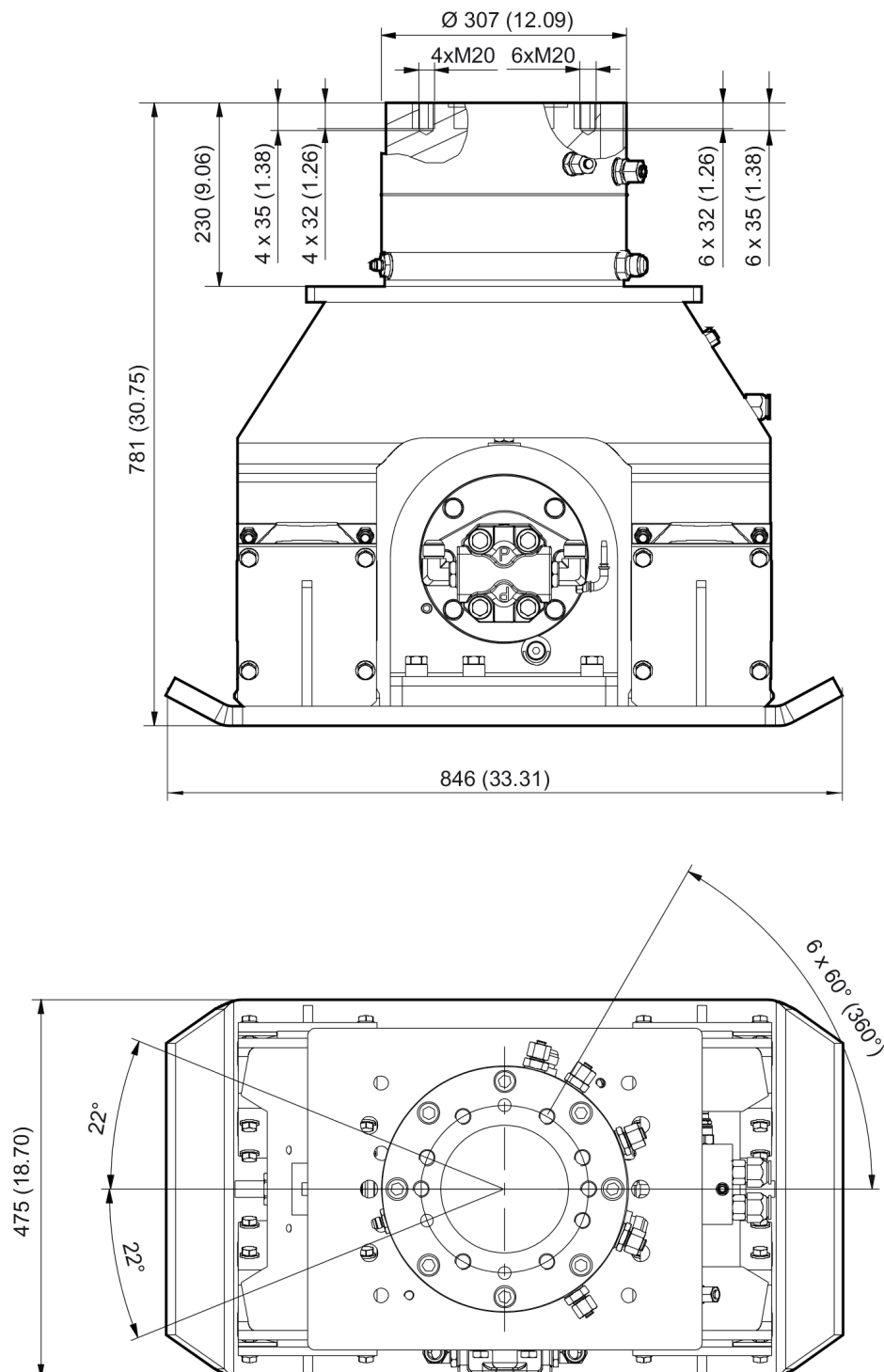
Item	Part No.	Name	Qty	L
1		Tracking module HATCON	1	
2	3315439130	Damper HATCON	2	
3	3315439110	Housing type 1 HATCON	1	
4	3315439140	Lock ring HATCON	1	
5	3315439120	Sleeve HATCON	4	
6	3315439100	Product label HATCON	1	
7	3315442600	Screw HATCON	4	

Mechanical Dimensions HC 350 non rotating



This page intentionally left blank

Mechanical Dimensions HC 350 rotating



Refer to the DocMine web page for most up-to-date information. The printed information might be outdated.

Wed Jan 12 12:52:57 UTC 2022

This page intentionally left blank

Options / accessories Hydraulic hoses

NO EXPLODED VIEW
AVAILABLE
FOR THIS BOM

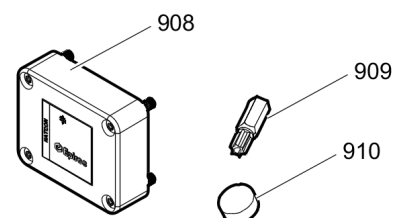
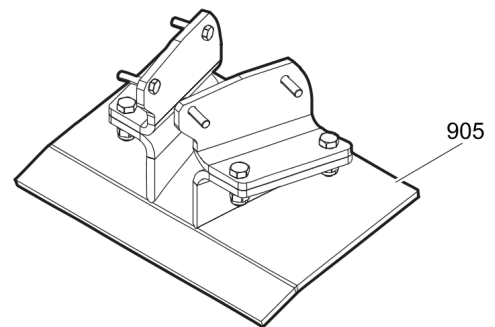
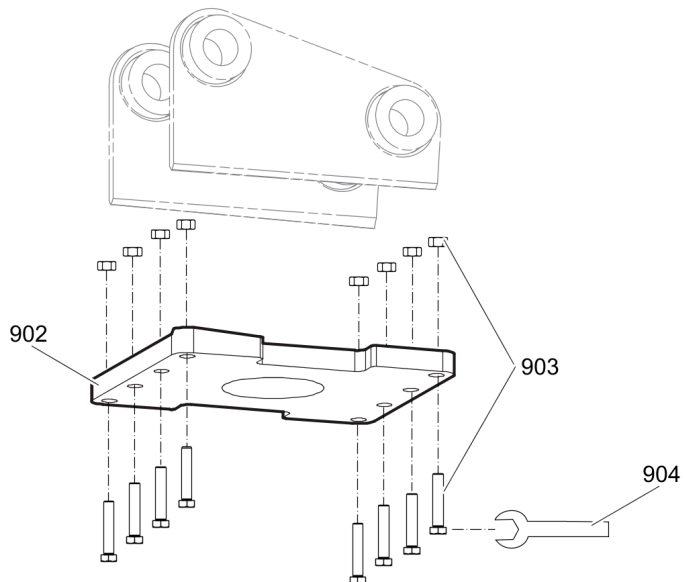
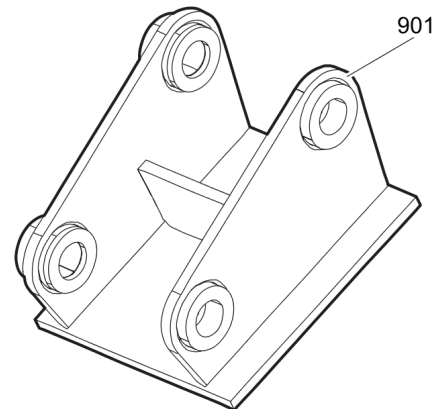
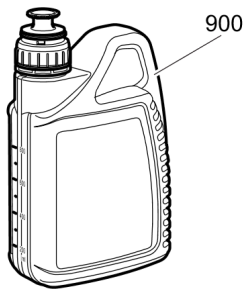
Item	Part No.	Name	Qty	L
Not Shown	-	Pressure line / tank line		
-	3361353551	Hydraulic hose, I.D. 12 (0.47"), both ends M22 x 1.5, conical seal 24°, length 1750 mm (69 in.)	2	
-	3363085946	Hydraulic hose, I.D. 12 (0.47"), both ends M22 x 1.5, conical seal 24°, length 2100 mm (83 in.)	2	
Not Shown	-	Accessories to the hydraulic hoses		
-	3363098286	Fitting set	1	
Not Shown	-	Drainage for hydraulic motor		
-	3363119625	Hydraulic hose, I.D. 8 (3/8"), M20 x 1.5 conical seal 24° - 9/16-18 JIC, length 2800 mm (110 in.)	1	

Comments for Page: Hydraulic hoses

Note

Remove the genuine fittings carrier side from the valve block before mounting the fitting set.

Options / accessories Optional equipment part 1



Item	Part No.	Name	Qty	L
900		Compactor oil	1	A
901		Adapter plate matching the carrier. Consult the authorized Customer Center/Dealer in your area.	1	
902	3315295100	Base plate	1	
903	3315296490	Bolt kit	1	
904	3360430655	Open end spanner (24/27 mm)	1	
905	3376696108	Backfill blade kit	1	
908	3315442500	Retrofit kit HATCON	1	
909	3315439105	Security bit HATCON	1	
910	3315439106	Magnet HATCON	1	

Comments for Page: Optional equipment part 1

A | Oil specification

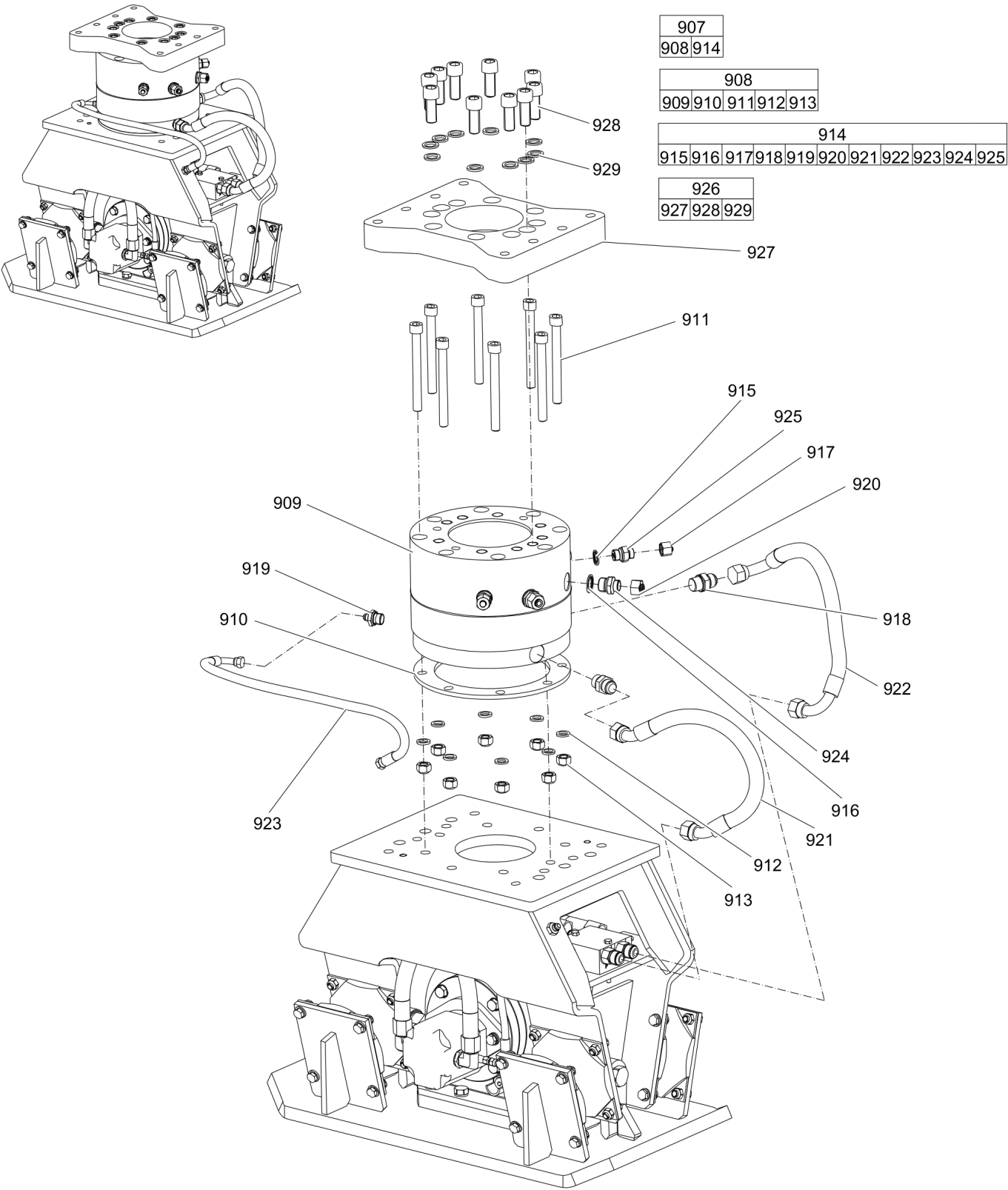
Application: Engine oil

Type: Mineral oil

Viscosity: SAE 15W-40

API Service Classification: CI-4

Options / accessories Optional equipment part 2



Item	Part No.	Name	Qty	L
907(908-925)	1826101829	Rotation kit	1	
908(909-913)	1826101823	Rotation unit	1	
909		Rotator	1	
910		Spacer	1	
911		Allen screw	8	
912		LOCK WASHER	8	
913		Hexagon nut, M16 A2K	8	
914(915-925)	3376696437	Hose/Fitting kit	1	
915		U-seal ring 1/2	3	
916		Seal	2	
917		Plug	3	
918		Fitting	2	
919		Fitting	1	
920		Plug	2	
921		Hydraulic hose	1	
922		Hydraulic hose	1	
923		Hydraulic hose	1	
924		Fitting	2	
925		Fitting	3	
926(927-929)	3363115683	Sandwich plate complete	1	
927		Sandwich plate	1	
928	3360026782	Allen screw	10	
929	3361850748	Pair of lock washers	10	

Any unauthorized use or copying of the contents or any part thereof is prohibited.
This applies in particular to trademarks, model denominations, part numbers and drawings.