

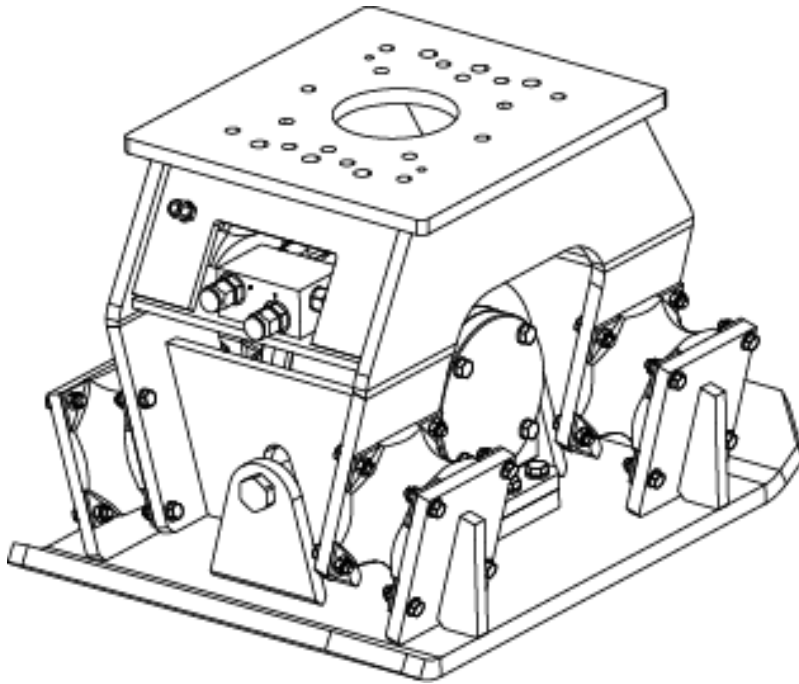
HC 450, HC 450 R

Spare parts list

Hydraulic compactor

HC 450 s/n BES132457 – BES163276

HC 450 R s/n BES132457 – BES163276



General information

This spare parts list applies to the following:

| Part number | Description |
|-------------|----------------------|
| 1826101748 | HC 450 |
| 8460060004 | HC 450 R |
| 8460060005 | HC 450 with HATCON |
| 8460060006 | HC 450 R with HATCON |

Use only authorized parts. Any damage or malfunction caused by the use of unauthorized parts is not covered by Warranty or Product Liability. Any unauthorized use or copying of the contents or any part thereof is prohibited. This applies in particular to trademarks, model denominations, part numbers, and drawings.

Instructions for use

This spare parts list contains no safety regulations and is merely intended to assist in the ordering of spare parts.

For information about operating, servicing, or repairing, the relevant Safety and operating instructions must be consulted at all costs.

Please observe the safety instructions listed in the relevant Safety and operating instructions!

Instructions for ordering

It is essential to indicate the serial number of the hydraulic attachment when ordering spare parts!

Please note the full identification number of your hydraulic attachment.

Determine the quantity of individual parts which are required and need to be ordered. The order must indicate the following details:

- full identification code of the hydraulic attachment
- required quantity
- part number
- description

Service, repair and wear part kits

Kit list 1

Mechanical

Hydraulic compactor HC 450 non rotating3

Hydraulic compactor HC 450 rotating6

Rotation unit10

Tightening torques 13

HATCON (Horizontal) 15

Dimensions HC 450 non rotating 17

Dimensions HC 450 rotating 18

Options / accessories

Hydraulic hoses 20

Optional equipment part 1 23

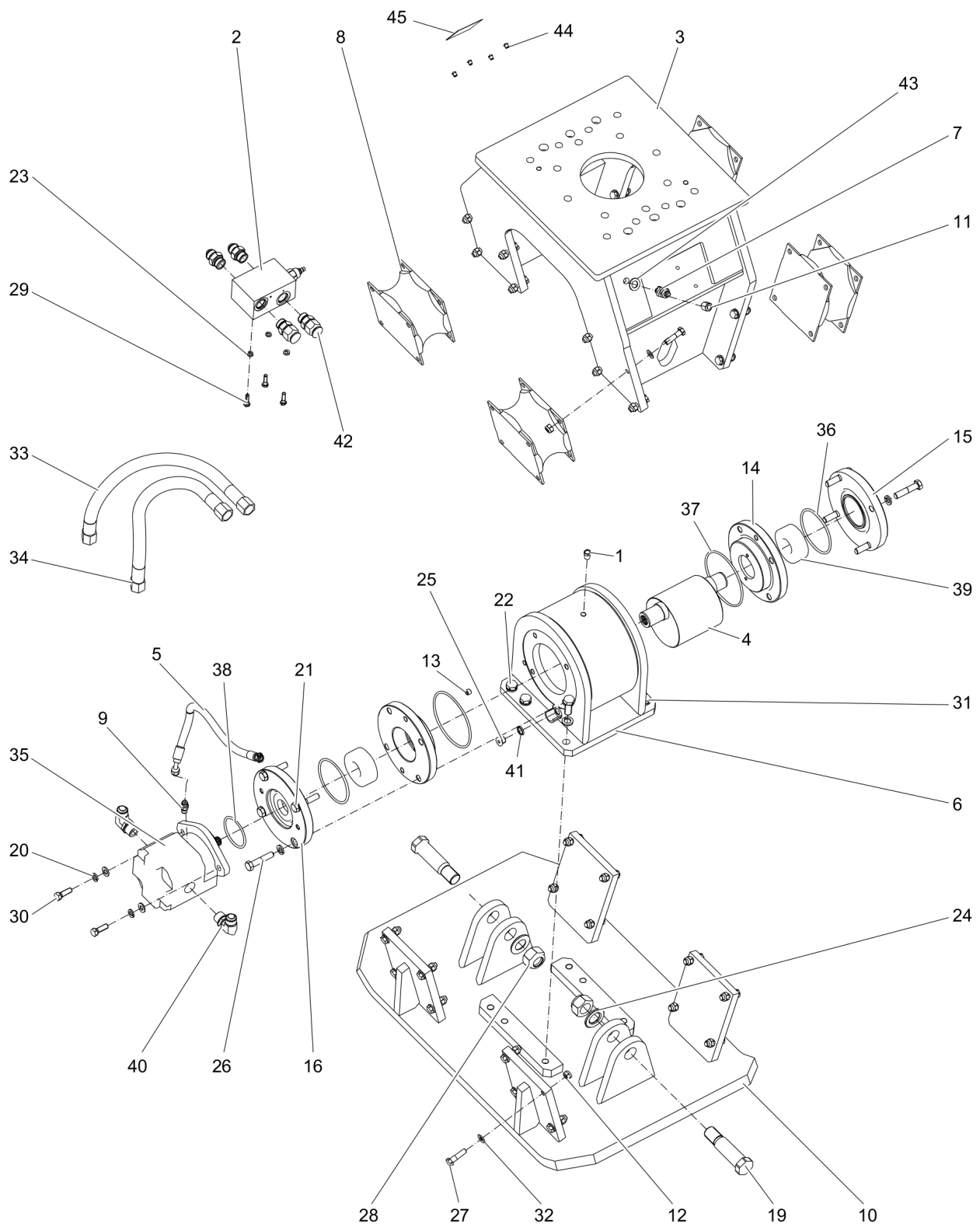
Optional equipment part 2 25

Service, repair and wear part kits Kit list

NO EXPLODED VIEW
AVAILABLE
FOR THIS BOM

| Item | Part No. | Name | Qty | L |
|------|------------|----------------------------|-----|---|
| KIT | 3376697231 | Label kit | 1 | |
| KIT | 3376691036 | Seal kit (Hydraulic motor) | 1 | |
| KIT | 3376691032 | Rubber isolator kit | 1 | |
| 8 | 3376100755 | Rubber isolator | 4 | |
| 12 | 0291111200 | Lock nut | 32 | |
| 27 | 0147140403 | SCREW, HEX HEAD | 32 | |
| 32 | 0301235800 | FLAT WASHER | 32 | |
| KIT | 3376100997 | Seal kit (Rotator) | 1 | |

Mechanical Hydraulic compactor HC 450 non rotating



Refer to the DocMine web page for most up-to-date information. The printed information might be outdated.
Wed Jan 12 12:46:40 UTC 2022

| Item | Part No. | Name | Qty | L |
|------|------------|--|-----|---|
| 1 | 3376100779 | Vent valve | 1 | |
| 2 | 3376697007 | Control valve block 1 1/16" UNF ports female | 1 | |
| 3 | 3376697406 | Outer housing | 1 | |
| 4 | 3376691004 | Rotor | 1 | |
| 5 | 3376101523 | Hydraulic hose | 1 | |
| 6 | 3376697409 | Rotor housing | 1 | |
| 7 | 3176649600 | NIPPLE | 1 | |
| 8 | 3376100755 | Rubber isolator | 4 | |
| 9 | 0570501073 | Fitting, straight UNF 9/16-18, NPT 1/4-18 | 1 | |
| 10 | 3376697403 | Tamper plate | 1 | |
| 11 | 3176542900 | CAP | 1 | |
| 12 | 0291111200 | Lock nut | 32 | |
| 13 | 0686612800 | PLUG | 1 | |
| 14 | 3376696012 | Bearing retainer | 2 | |
| 15 | 3376696013 | Bearing cover | 1 | |
| 16 | 3376696011 | Bearing cover | 1 | |
| 19 | 3376697143 | Axle | 2 | A |
| 20 | 0333217421 | SPRING WASHER | 2 | |
| 21 | 0333217422 | SPRING WASHER | 8 | |
| 22 | 0333217423 | SPRING WASHER | 6 | |
| 23 | 0333222500 | SPRING WASHER | 3 | |
| 24 | 0300027486 | Washer M30 | 2 | |
| 25 | 0686371626 | PLUG | 1 | |
| 26 | 0147144503 | SCREW, HEX HEAD | 8 | |
| 27 | 0147140403 | SCREW, HEX HEAD | 32 | |
| 28 | 0291112000 | LOCK NUT | 2 | |
| 29 | 0147132603 | SCREW, HEX HEAD | 3 | |
| 30 | 0147140203 | SCREW, HEX HEAD | 2 | |
| 31 | 0147147703 | SCREW, HEX HEAD | 6 | |
| 32 | 0301235800 | FLAT WASHER | 34 | |
| 33 | 3376101486 | Hydraulic hose | 1 | |
| 34 | 3376101519 | Hydraulic hose | 1 | |
| 35 | 3376100758 | Hydraulic motor | 1 | |
| 36 | 0663212018 | O-ring 110 x 5 mm 70° IRH (NBR) | 2 | |
| 37 | 0663211340 | O-RING | 2 | |
| 38 | 0663212016 | O-ring 75 x 5 mm 70° IRH (NBR) | 1 | |
| 39 | 0506010022 | Bearing | 2 | |

Refer to the DocMine web page for most up-to-date information. The printed information might be outdated.

Wed Jan 12 12:46:40 UTC 2022

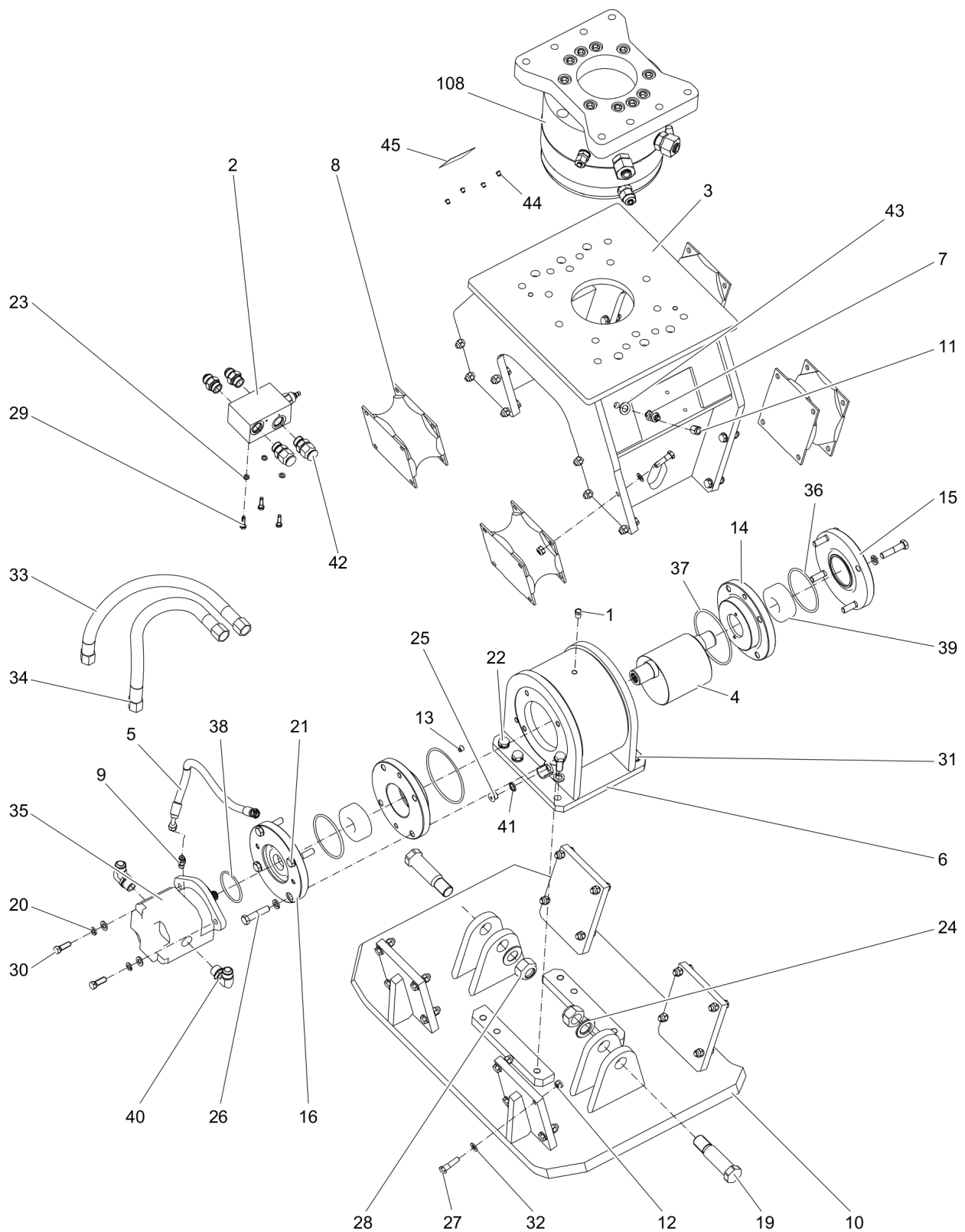
| Item | Part No. | Name | Qty | L |
|------|------------|------------------------|-----|---|
| 40 | 3176657100 | ELBOW | 2 | |
| 41 | 0661100016 | SEAL WASHER | 1 | |
| 42 | 3176630100 | NIPPLE | 4 | |
| 43 | 5750534088 | Washer | 1 | |
| 44 | 3315439145 | Protective plug HATCON | 4 | |
| 45 | 3315439101 | HATCON label | 1 | |

Comments for Page: Hydraulic compactor HC 450 non rotating

A | with item 24 and 28

This page intentionally left blank

Mechanical Hydraulic compactor HC 450 rotating



Refer to the DocMine web page for most up-to-date information. The printed information might be outdated.
Wed Jan 12 12:46:42 UTC 2022

| Item | Part No. | Name | Qty | L |
|------|------------|--|-----|---|
| 1 | 3376100779 | Vent valve | 1 | |
| 2 | 3376697007 | Control valve block 1 1/16" UNF ports female | 1 | |
| 3 | 3376697406 | Outer housing | 1 | |
| 4 | 3376691004 | Rotor | 1 | |
| 5 | 3376101523 | Hydraulic hose | 1 | |
| 6 | 3376697409 | Rotor housing | 1 | |
| 7 | 3176649600 | NIPPLE | 1 | |
| 8 | 3376100755 | Rubber isolator | 4 | |
| 9 | 0570501073 | Fitting, straight UNF 9/16-18, NPT 1/4-18 | 1 | |
| 10 | 3376697403 | Tamper plate | 1 | |
| 11 | 3176542900 | CAP | 1 | |
| 12 | 0291111200 | Lock nut | 32 | |
| 13 | 0686612800 | PLUG | 1 | |
| 14 | 3376696012 | Bearing retainer | 2 | |
| 15 | 3376696013 | Bearing cover | 1 | |
| 16 | 3376696011 | Bearing cover | 1 | |
| 19 | 3376697143 | Axle | 2 | A |
| 20 | 0333217421 | SPRING WASHER | 2 | |
| 21 | 0333217422 | SPRING WASHER | 8 | |
| 22 | 0333217423 | SPRING WASHER | 6 | |
| 23 | 0333222500 | SPRING WASHER | 3 | |
| 24 | 0300027486 | Washer M30 | 2 | |
| 25 | 0686371626 | PLUG | 1 | |
| 26 | 0147144503 | SCREW, HEX HEAD | 8 | |
| 27 | 0147140403 | SCREW, HEX HEAD | 32 | |
| 28 | 0291112000 | LOCK NUT | 2 | |
| 29 | 0147132603 | SCREW, HEX HEAD | 3 | |
| 30 | 0147140203 | SCREW, HEX HEAD | 2 | |
| 31 | 0147147703 | SCREW, HEX HEAD | 6 | |
| 32 | 0301235800 | FLAT WASHER | 34 | |
| 33 | 3376101486 | Hydraulic hose | 1 | |
| 34 | 3376101519 | Hydraulic hose | 1 | |
| 35 | 3376100758 | Hydraulic motor | 1 | |
| 36 | 0663212018 | O-ring 110 x 5 mm 70° IRH (NBR) | 2 | |
| 37 | 0663211340 | O-RING | 2 | |
| 38 | 0663212016 | O-ring 75 x 5 mm 70° IRH (NBR) | 1 | |
| 39 | 0506010022 | Bearing | 2 | |

Refer to the DocMine web page for most up-to-date information. The printed information might be outdated.

Wed Jan 12 12:46:42 UTC 2022

| Item | Part No. | Name | Qty | L |
|------|------------|------------------------|-----|---|
| 40 | 3176657100 | ELBOW | 2 | |
| 41 | 0661100016 | SEAL WASHER | 1 | |
| 42 | 3176630100 | NIPPLE | 4 | |
| 43 | 5750534088 | Washer | 1 | |
| 44 | 3315439145 | Protective plug HATCON | 4 | |
| 45 | 3315439101 | HATCON label | 1 | |
| 108 | 1826101823 | Rotation unit | 1 | B |

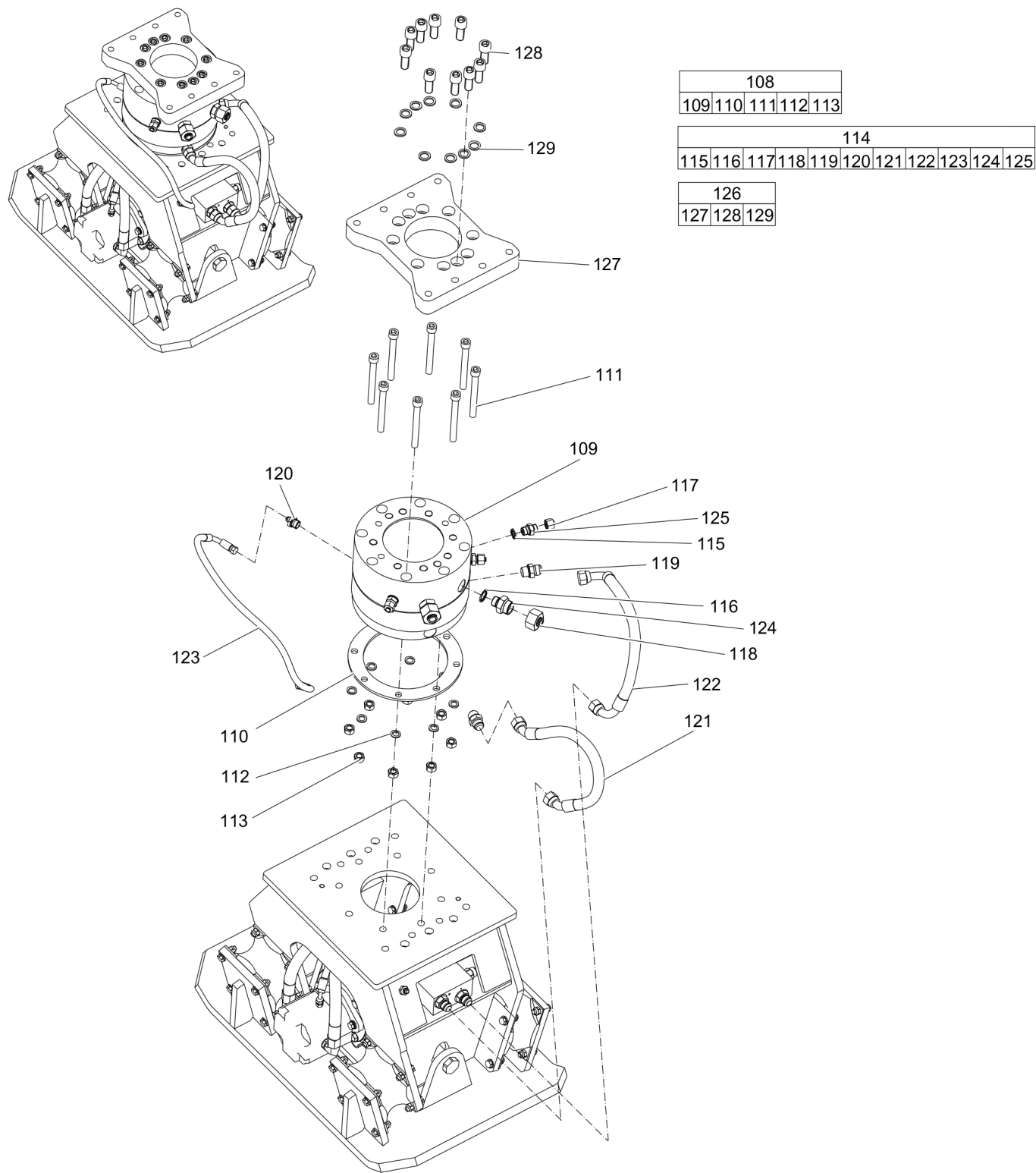
Comments for Page: Hydraulic compactor HC 450 rotating

A | with item 24 and 28

B | see separate chapter

This page intentionally left blank

Mechanical Rotation unit



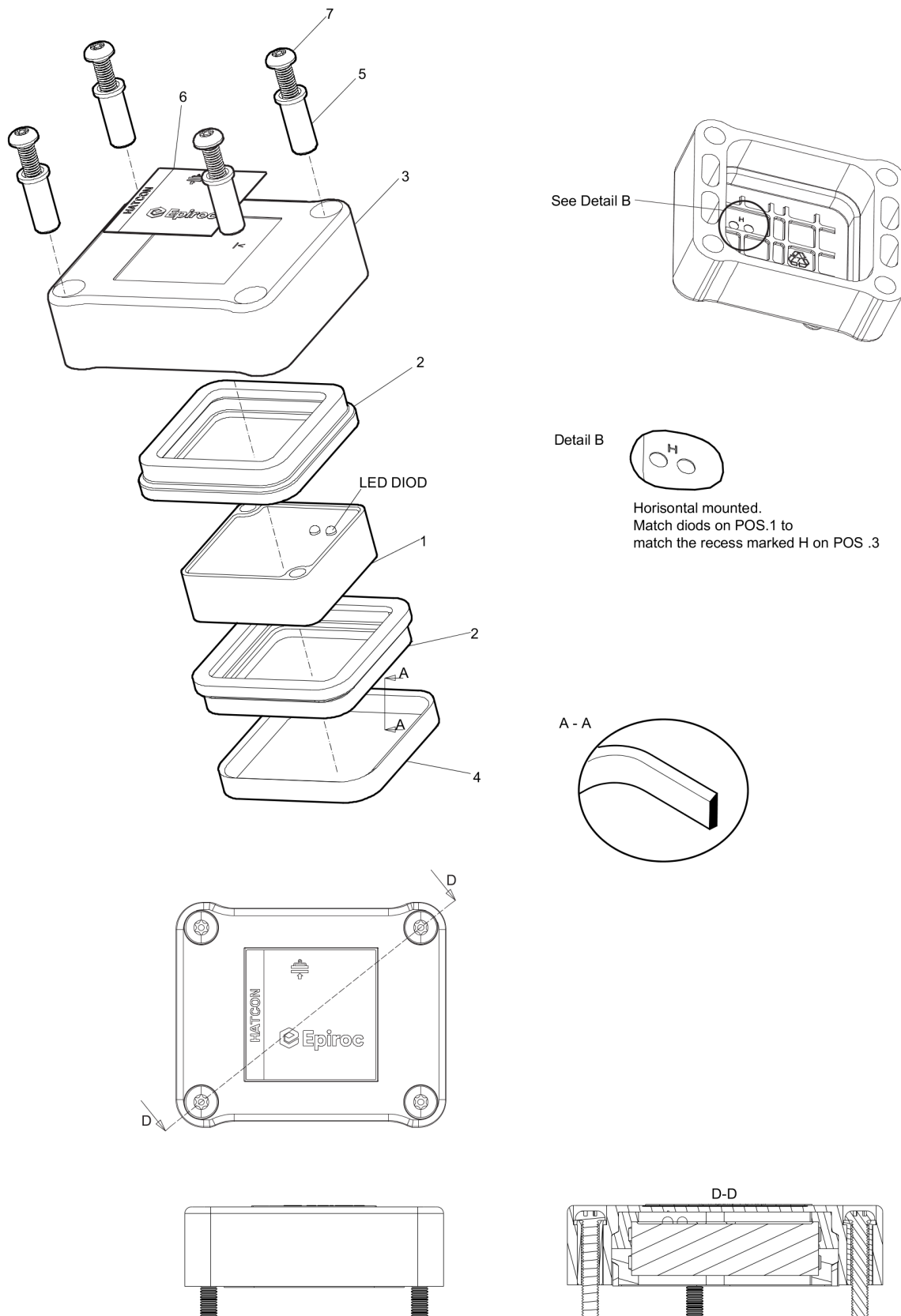
| Item | Part No. | Name | Qty | L |
|--------------|------------|------------------------------|-----|---|
| 108(109-113) | 1826101823 | Rotation unit | 1 | |
| 109 | | Rotator | 1 | |
| 110 | | Spacer | 1 | |
| 111 | | Allen screw | 8 | |
| 112 | | LOCK WASHER | 8 | |
| 113 | | Hexagon nut, M16 A2K | 8 | |
| 114(115-125) | 3376697437 | Hose/Fitting kit | 1 | |
| 115 | | SEAL WASHER 21.54x28.58x2.47 | 3 | |
| 116 | | SEAL WASHER 27.05x34.93x2.47 | 2 | |
| 117 | | Plug | 3 | |
| 118 | | Plug | 2 | |
| 119 | | Fitting | 2 | |
| 120 | | Fitting | 1 | |
| 121 | | Hydraulic hose | 1 | |
| 122 | | Hydraulic hose | 1 | |
| 123 | | Hydraulic hose | 1 | |
| 124 | | Fitting | 2 | |
| 125 | | Fitting | 3 | |
| 126(127-129) | 3363115683 | Sandwich plate complete | 1 | |
| 127 | | Sandwich plate | 1 | |
| 129 | 3361850748 | Pair of lock washers | 10 | |
| 128 | 3360026782 | Allen screw | 10 | |

Mechanical Tightening torques

NO EXPLODED VIEW
AVAILABLE
FOR THIS BOM

| Item | Part No. | Name | Qty | L |
|------|----------|--|-----|---|
| 1 | - | Open-ended wrench - pretighten finger tight, then 1 - 2 turns tighten with the open-ended wrench | - | |
| 13 | - | Allen key - pretighten finger tight, then 1 - 2 turns tighten with the Allen key | - | |
| 25 | - | Allen key - 78 Nm (57.5 ft lbf) | - | |
| 26 | - | Open-ended wrench - 109 Nm (80 ft lbf) | - | |
| 27 | - | Open-ended wrench - 69 Nm (51 ft lbf) | - | |
| 29 | - | Open-ended wrench - 20 Nm (15 ft lbf) | - | |
| 30 | - | Open-ended wrench - 69 Nm (51 ft lbf) | - | |
| 31 | - | Open-ended wrench - 171 Nm (126 ft lbf) | - | |

Mechanical HATCON (Horizontal)

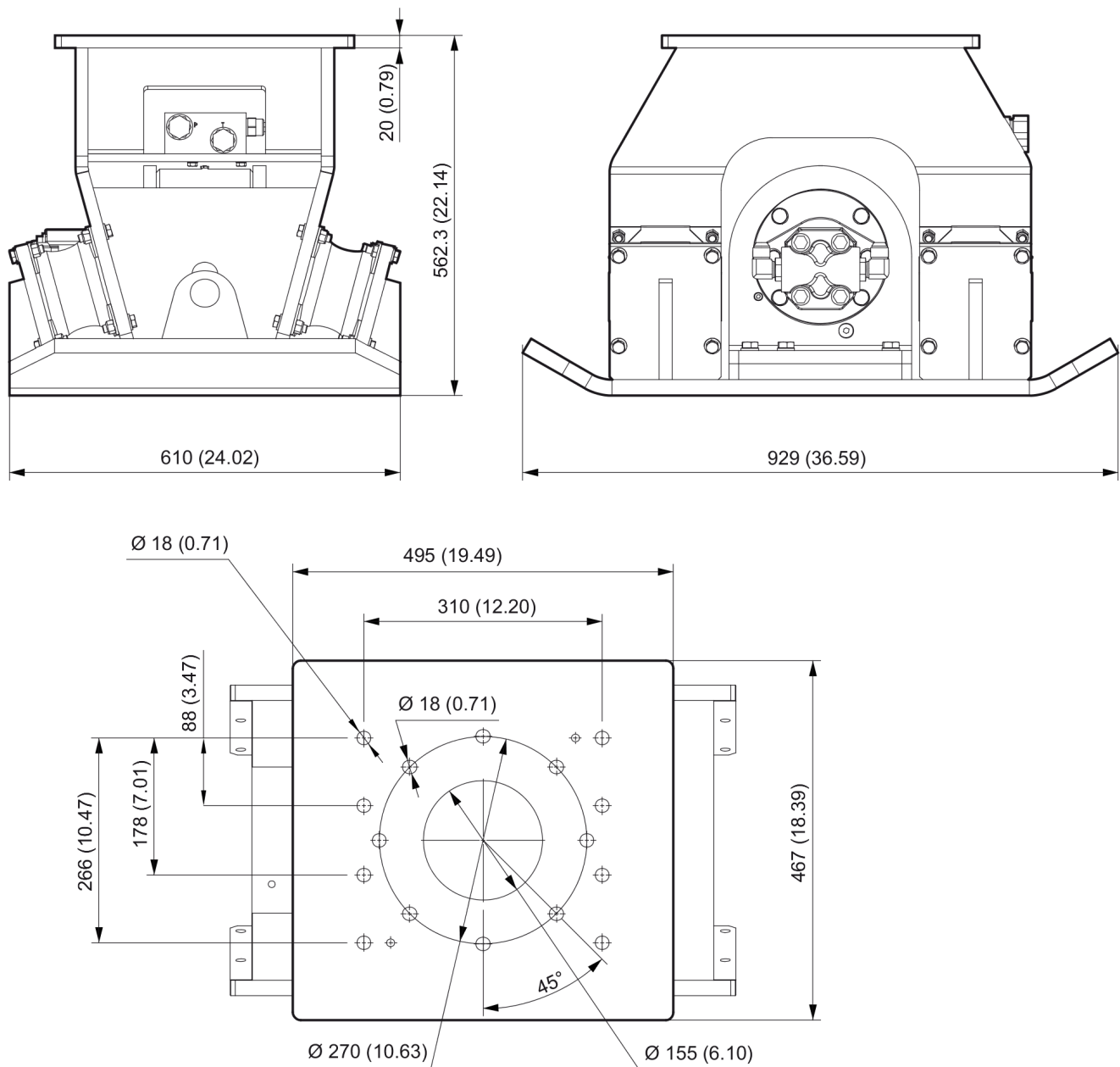


Refer to the DocMine web page for most up-to-date information. The printed information might be outdated.

Wed Jan 12 12:46:45 UTC 2022

| Item | Part No. | Name | Qty | L |
|------|------------|------------------------|-----|---|
| 1 | | Tracking module HATCON | 1 | |
| 2 | 3315439130 | Damper HATCON | 2 | |
| 3 | 3315439110 | Housing type 1 HATCON | 1 | |
| 4 | 3315439140 | Lock ring HATCON | 1 | |
| 5 | 3315439120 | Sleeve HATCON | 4 | |
| 6 | 3315439100 | Product label HATCON | 1 | |
| 7 | 3315442600 | Screw HATCON | 4 | |

Mechanical Dimensions HC 450 non rotating

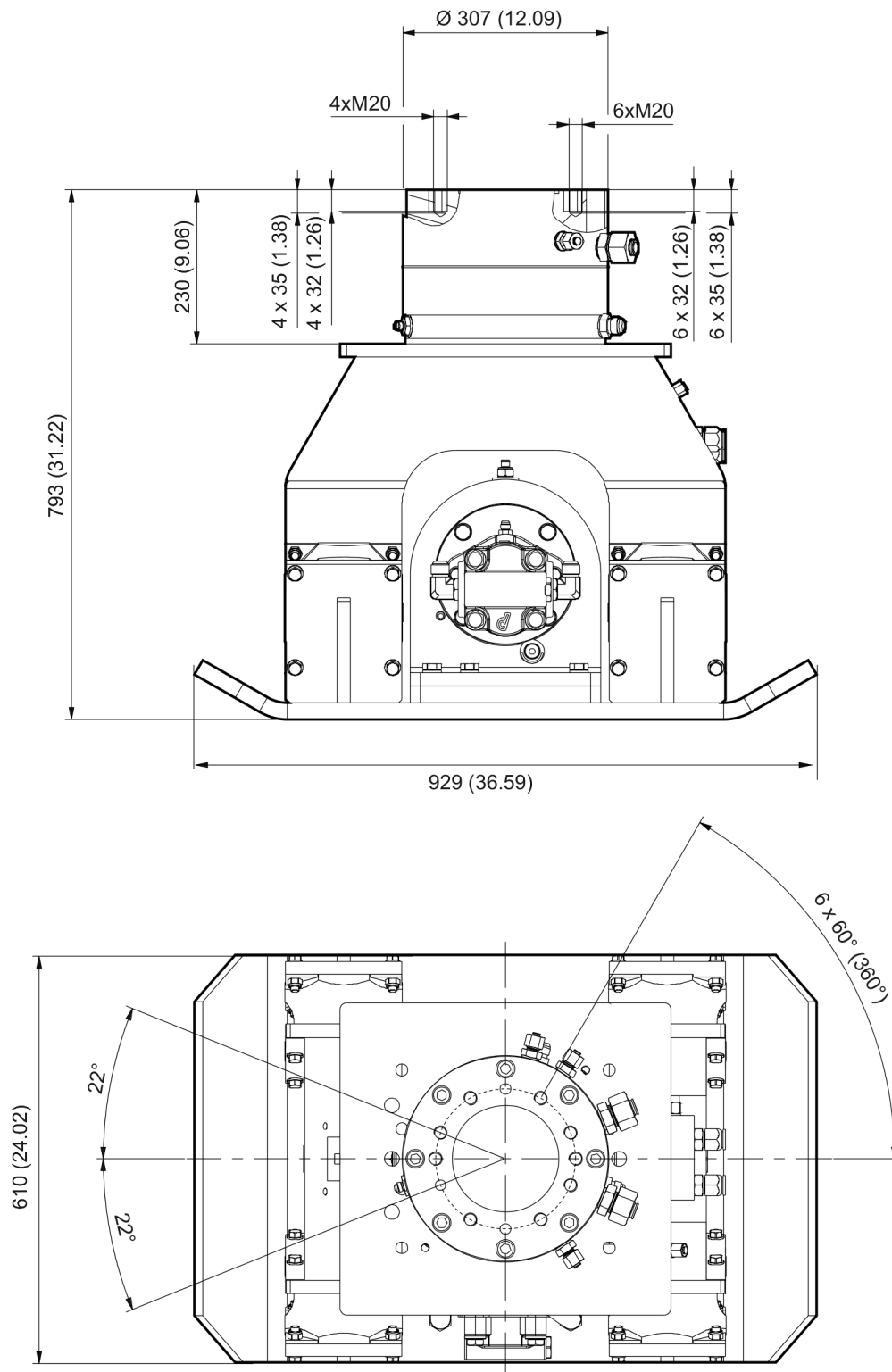


Refer to the DocMine web page for most up-to-date information. The printed information might be outdated.

Wed Jan 12 12:46:45 UTC 2022

This page intentionally left blank

Mechanical Dimensions HC 450 rotating



Refer to the DocMine web page for most up-to-date information. The printed information might be outdated.

Wed Jan 12 12:46:46 UTC 2022

This page intentionally left blank

Options / accessories Hydraulic hoses

NO EXPLODED VIEW
AVAILABLE
FOR THIS BOM

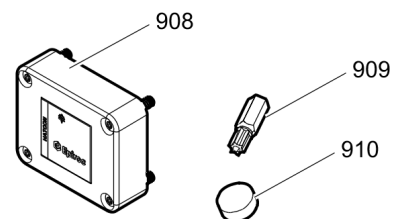
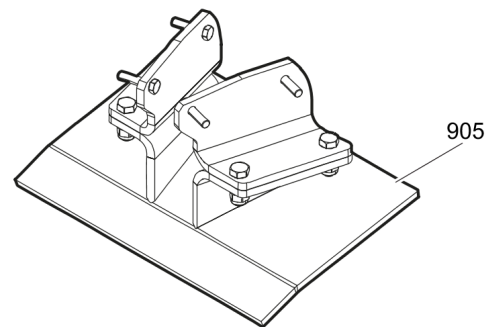
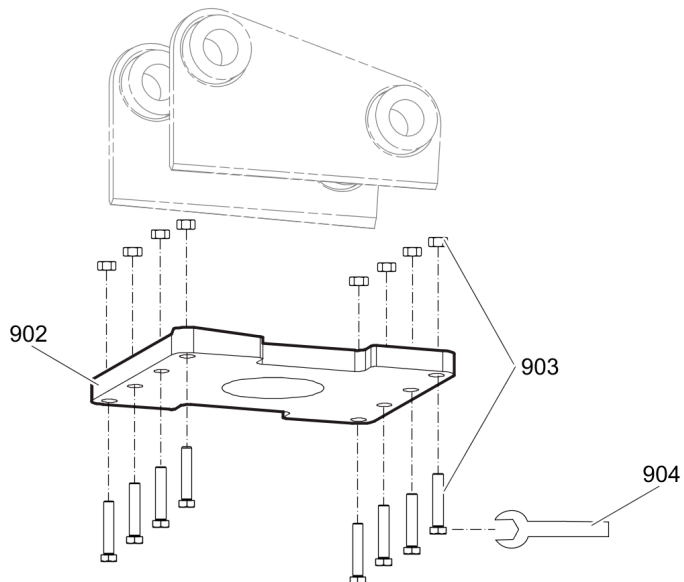
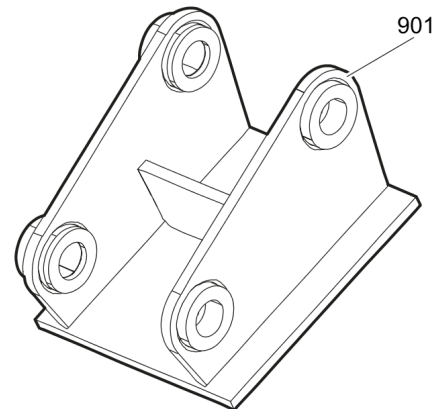
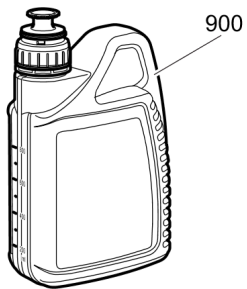
| Item | Part No. | Name | Qty | L |
|-----------|------------|--|-----|---|
| Not Shown | - | Pressure line / tank line | | |
| - | 3360332294 | Hydraulic hose, I.D. 20 (0.79 in.), both ends M36 x 2 mm conical seal 24°, length 2,300 mm (90.5 in.) | 2 | A |
| - | 3363085947 | Hydraulic hose, I.D. 20 (0.79 in.), both ends M36 x 2 mm conical seal 24°, length 2,800 mm (110.2 in.) | 2 | A |
| Not Shown | - | Accessories to the hydraulic hoses | | |
| - | 3363098287 | Fitting set | 1 | B |
| Not Shown | - | Drainage for hydraulic motor | | |
| - | 3363119625 | Hydraulic hose, I.D. 8 (3/8"), M20 x 1.5 conical seal 24° - 9/16-18 JIC, length 2800 mm (110 in.) | 1 | |

Comments for Page: Hydraulic hoses

A | You need a special fitting set when using these hose connections. The fitting set must be ordered separately.

B | Remove the genuine fittings carrier side from the valve block before mounting the fitting set.

Options / accessories Optional equipment part 1



| Item | Part No. | Name | Qty | L |
|------|------------|---|-----|---|
| 900 | | Compactor oil | 1 | A |
| 901 | | Adapter plate matching the carrier. Consult the authorized Customer Center/Dealer in your area. | 1 | |
| 902 | 3315295100 | Base plate | 1 | |
| 903 | 3315296490 | Bolt kit | 1 | |
| 904 | 3360430655 | Open end spanner (24/27 mm) | 1 | |
| 905 | 3376697108 | Backfill blade kit | 1 | |
| 908 | 3315442500 | Retrofit kit HATCON | 1 | |
| 909 | 3315439105 | Security bit HATCON | 1 | |
| 910 | 3315439106 | Magnet HATCON | 1 | |

Comments for Page: Optional equipment part 1

A | Oil specification

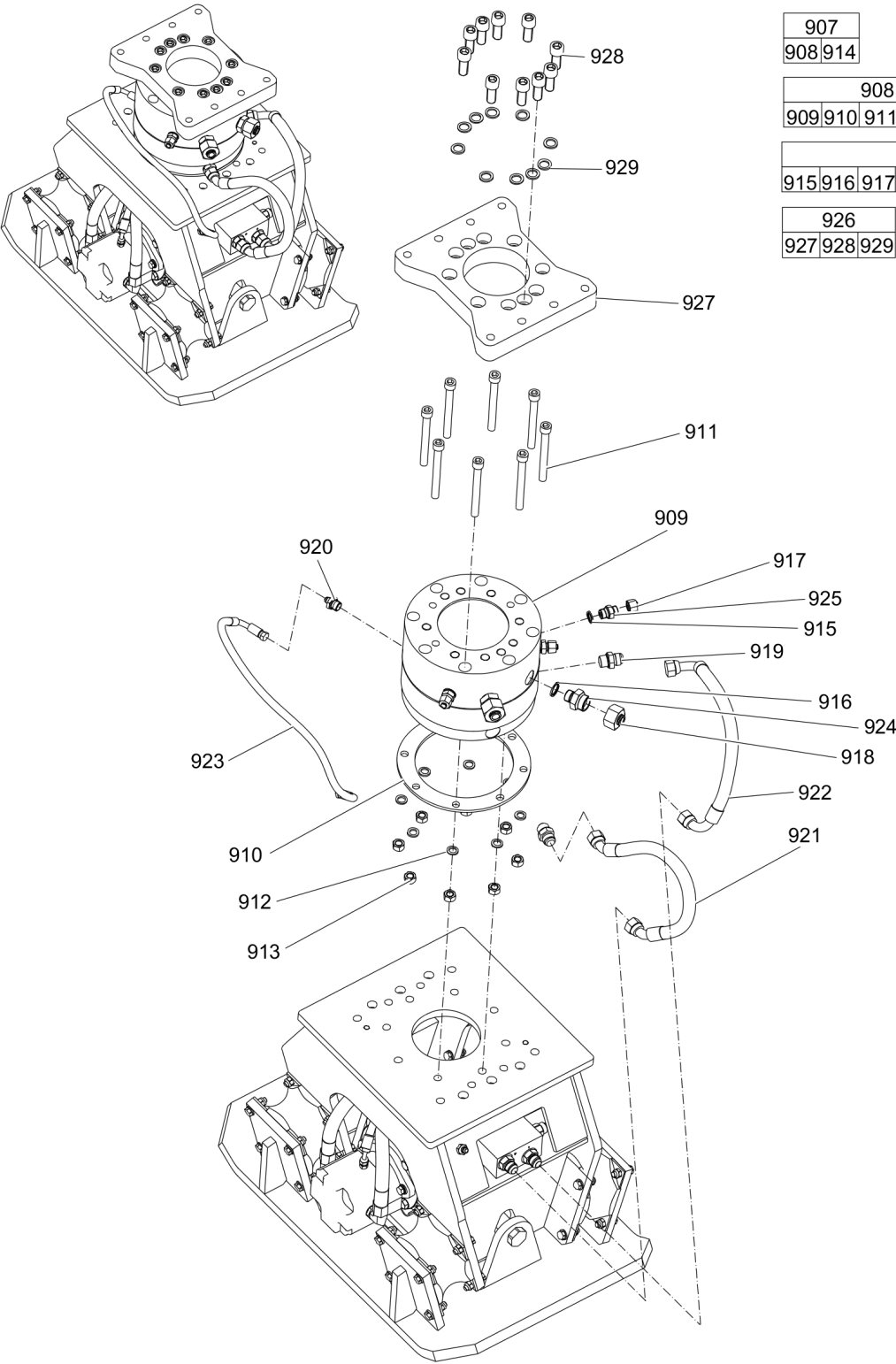
Application: Engine oil

Type: Mineral oil

Viscosity: SAE 15W-40

API Service Classification: CI-4

Options / accessories Optional equipment part 2



| |
|---------|
| 907 |
| 908 914 |

| | | | | |
|-----|-----|-----|-----|-----|
| 908 | | | | |
| 909 | 910 | 911 | 912 | 913 |

| | | | | | | | | | |
|-----|-----|-----|-----|-----|-----|-----|-----|-----|-----|
| 914 | | | | | | | | | |
| 915 | 916 | 917 | 918 | 919 | 920 | 921 | 922 | 923 | 924 |

| | | |
|-----|-----|-----|
| 926 | | |
| 927 | 928 | 929 |

| Item | Part No. | Name | Qty | L |
|--------------|------------|------------------------------|-----|---|
| 907(908-925) | 1826101830 | Rotation kit | 1 | |
| 908(909-913) | 1826101823 | Rotation unit | 1 | |
| 909 | | Rotator | 1 | |
| 910 | | Spacer | 1 | |
| 911 | | Allen screw | 8 | |
| 912 | | LOCK WASHER | 8 | |
| 913 | | Hexagon nut, M16 A2K | 8 | |
| 914(915-925) | 3376697437 | Hose/Fitting kit | 1 | |
| 915 | | SEAL WASHER 21.54x28.58x2.47 | 3 | |
| 916 | | SEAL WASHER 27.05x34.93x2.47 | 2 | |
| 917 | | Plug | 3 | |
| 918 | | Plug | 2 | |
| 919 | | Fitting | 2 | |
| 920 | | Fitting | 1 | |
| 921 | | Hydraulic hose | 1 | |
| 922 | | Hydraulic hose | 1 | |
| 923 | | Hydraulic hose | 1 | |
| 924 | | Fitting | 2 | |
| 925 | | Fitting | 3 | |
| 926(927-929) | 3363115683 | Sandwich plate complete | 1 | |
| 927 | | Sandwich plate | 1 | |
| 929 | 3361850748 | Pair of lock washers | 10 | |
| 928 | 3360026782 | Allen screw | 10 | |

Any unauthorized use or copying of the contents or any part thereof is prohibited.
This applies in particular to trademarks, model denominations, part numbers and drawings.