

# HC 450, HC 450 R

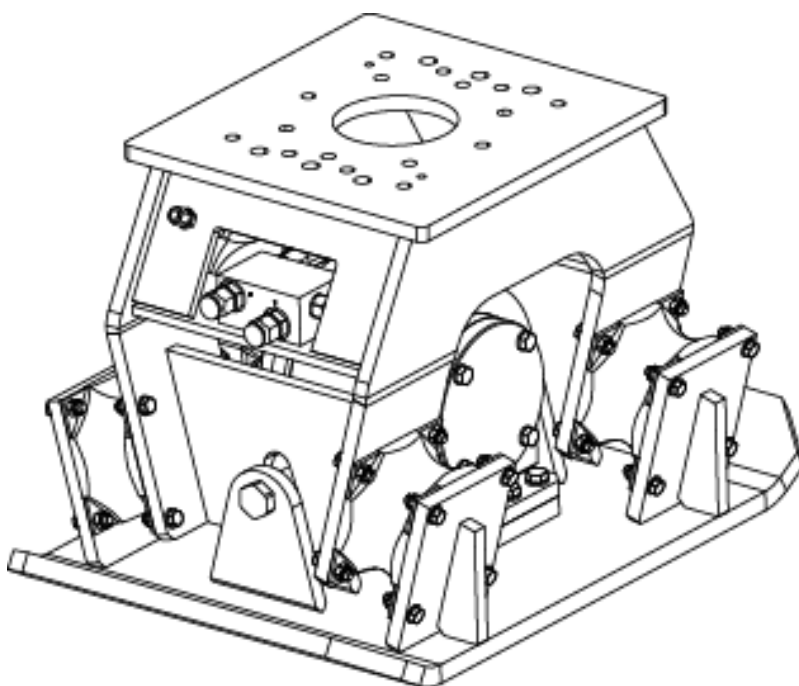
---

## Spare parts list

### Hydraulic compactor

HC 450 s/n BES163958 –

HC 450 R s/n BES163958 –



# General information

This spare parts list applies to the following:

Part number	Description
1826101748	HC 450
8460060004	HC 450 R
8460060005	HC 450 with HATCON
8460060006	HC 450 R with HATCON

Use only authorized parts. Any damage or malfunction caused by the use of unauthorized parts is not covered by Warranty or Product Liability. Any unauthorized use or copying of the contents or any part thereof is prohibited. This applies in particular to trademarks, model denominations, part numbers, and drawings.

## Instructions for use

This spare parts list contains no safety regulations and is merely intended to assist in the ordering of spare parts.

For information about operating, servicing, or repairing, the relevant Safety and operating instructions must be consulted at all costs.

Please observe the safety instructions listed in the relevant Safety and operating instructions!

## Instructions for ordering

It is essential to indicate the serial number of the hydraulic attachment when ordering spare parts!

Please note the full identification number of your hydraulic attachment.

Determine the quantity of individual parts which are required and need to be ordered. The order must indicate the following details:

- full identification code of the hydraulic attachment
- required quantity
- part number
- description

Service, repair and wear part kits

Kit list . . . . . 1

Mechanical

Hydraulic compactor HC 450 non rotating . . . . .3

Hydraulic compactor HC 450 rotating . . . . .6

Rotation unit . . . . .10

Tightening torques . . . . . 13

HATCON (Horizontal) . . . . . 15

Dimensions HC 450 non rotating . . . . . 17

Dimensions HC 450 rotating . . . . . 18

Options / accessories

Hydraulic hoses . . . . . 20

Optional equipment part 1 . . . . . 23

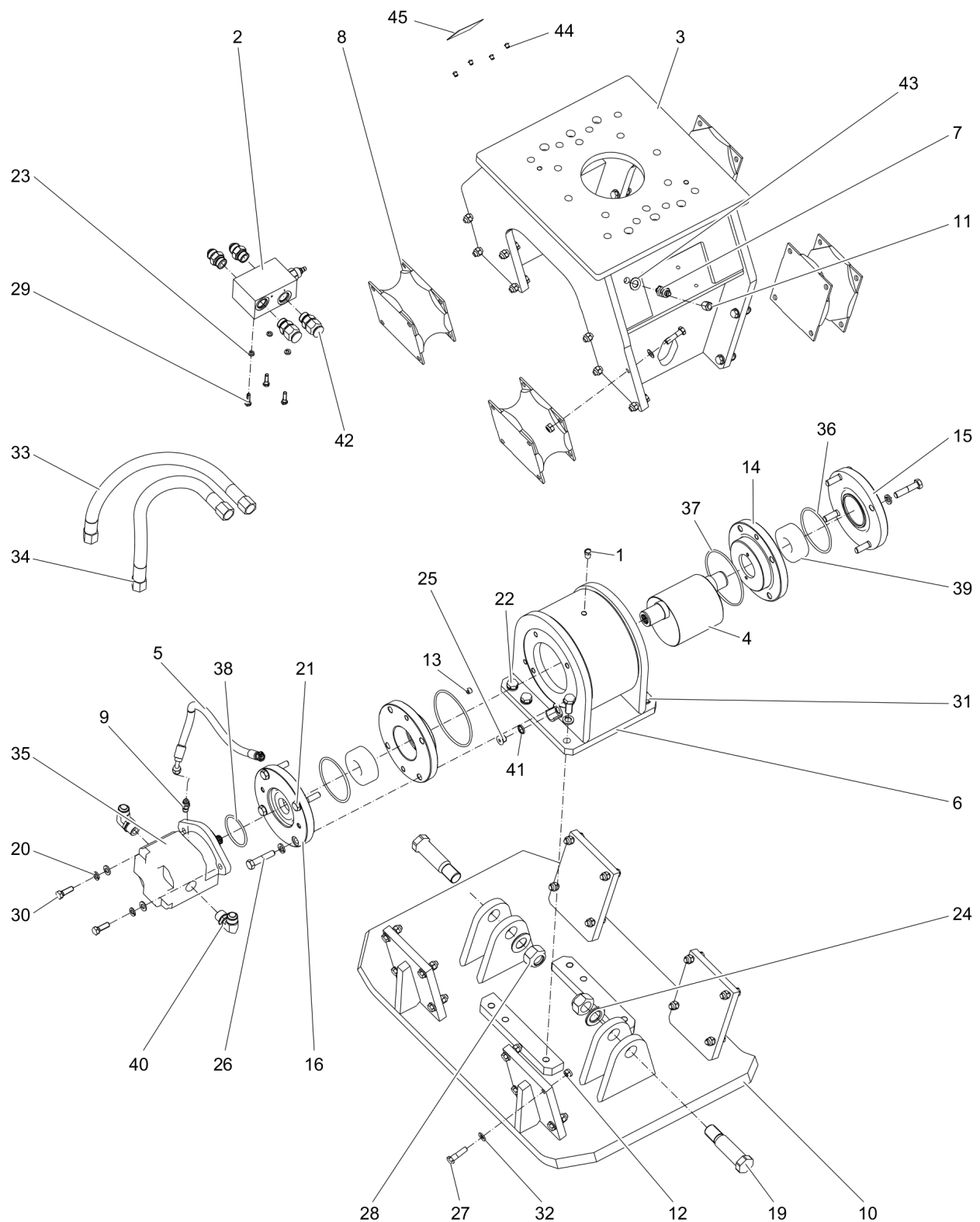
Optional equipment part 2 . . . . . 25

Service, repair and wear part kits Kit list

NO EXPLODED VIEW  
AVAILABLE  
FOR THIS BOM

Item	Part No.	Name	Qty	L
KIT	3376697231	Label kit	1	
KIT	3376691036	Seal kit (Hydraulic motor)	1	
KIT	3376691032	Rubber isolator kit	1	
8	3376100755	Rubber isolator	4	
12	0291111200	Lock nut	32	
27	0147140403	SCREW, HEX HEAD	32	
32	0301235800	FLAT WASHER	32	
KIT	3376100997	Seal kit (Rotator)	1	

## Mechanical Hydraulic compactor HC 450 non rotating



Refer to the DocMine web page for most up-to-date information. The printed information might be outdated.  
Wed Jan 12 12:46:40 UTC 2022

Item	Part No.	Name	Qty	L
1	3376100779	Vent valve	1	
2	3376697007	Control valve block 1 1/16" UNF ports female	1	
3	3376697406	Outer housing	1	
4	3376691004	Rotor	1	
5	3376101523	Hydraulic hose	1	
6	3376697409	Rotor housing	1	
7	3176649600	NIPPLE	1	
8	3376100755	Rubber isolator	4	
9	0570501073	Fitting, straight UNF 9/16-18, NPT 1/4-18	1	
10	3376697403	Tamper plate	1	
11	3176542900	CAP	1	
12	0291111200	Lock nut	32	
13	0686612800	PLUG	1	
14	3376696012	Bearing retainer	2	
15	3376696013	Bearing cover	1	
16	3376696011	Bearing cover	1	
19	3376697143	Axle	2	A
20	0333217421	SPRING WASHER	2	
21	0333217422	SPRING WASHER	8	
22	0333217423	SPRING WASHER	6	
23	0333222500	SPRING WASHER	3	
24	0300027486	Washer M30	2	
25	0686371626	PLUG	1	
26	0147144503	SCREW, HEX HEAD	8	
27	0147140403	SCREW, HEX HEAD	32	
28	0291112000	LOCK NUT	2	
29	0147132603	SCREW, HEX HEAD	3	
30	0147140203	SCREW, HEX HEAD	2	
31	0147147703	SCREW, HEX HEAD	6	
32	0301235800	FLAT WASHER	34	
33	3376101486	Hydraulic hose	1	
34	3376101519	Hydraulic hose	1	
35	3376100758	Hydraulic motor	1	
36	0663212018	O-ring 110 x 5 mm 70° IRH (NBR)	2	
37	0663211340	O-RING	2	
38	0663212016	O-ring 75 x 5 mm 70° IRH (NBR)	1	
39	0506010022	Bearing	2	

Refer to the DocMine web page for most up-to-date information. The printed information might be outdated.

Wed Jan 12 12:46:40 UTC 2022

Item	Part No.	Name	Qty	L
40	3176657100	ELBOW	2	
41	0661100016	SEAL WASHER	1	
42	3176630100	NIPPLE	4	
43	5750534088	Washer	1	
44	3315439145	Protective plug HATCON	4	
45	3315439101	HATCON label	1	

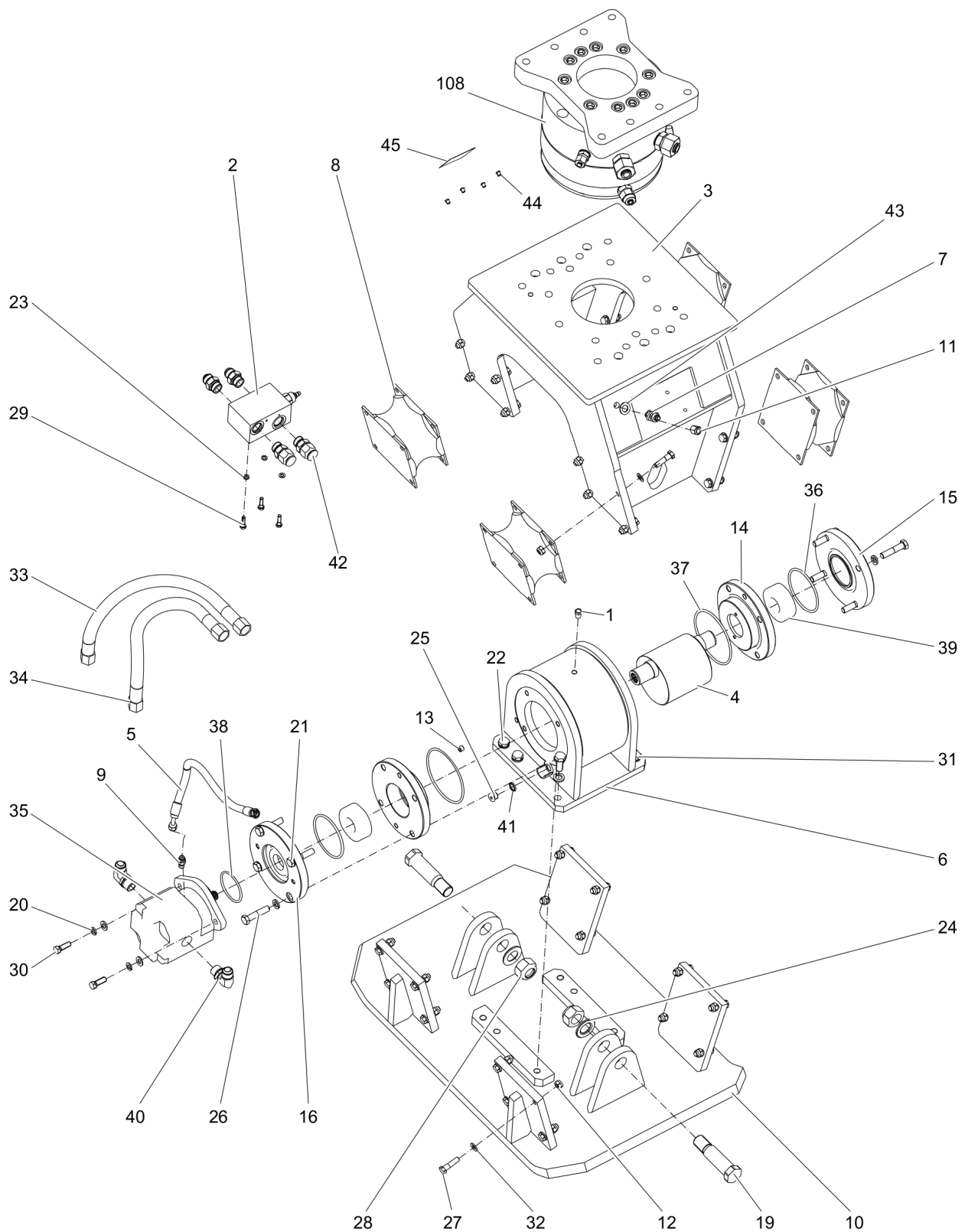
Comments for Page: Hydraulic compactor HC 450 non rotating

A | with item 24 and 28



This page intentionally left blank

## Mechanical Hydraulic compactor HC 450 rotating



Refer to the DocMine web page for most up-to-date information. The printed information might be outdated.  
Wed Jan 12 12:46:42 UTC 2022

Item	Part No.	Name	Qty	L
1	3376100779	Vent valve	1	
2	3376697007	Control valve block 1 1/16" UNF ports female	1	
3	3376697406	Outer housing	1	
4	3376691004	Rotor	1	
5	3376101523	Hydraulic hose	1	
6	3376697409	Rotor housing	1	
7	3176649600	NIPPLE	1	
8	3376100755	Rubber isolator	4	
9	0570501073	Fitting, straight UNF 9/16-18, NPT 1/4-18	1	
10	3376697403	Tamper plate	1	
11	3176542900	CAP	1	
12	0291111200	Lock nut	32	
13	0686612800	PLUG	1	
14	3376696012	Bearing retainer	2	
15	3376696013	Bearing cover	1	
16	3376696011	Bearing cover	1	
19	3376697143	Axle	2	A
20	0333217421	SPRING WASHER	2	
21	0333217422	SPRING WASHER	8	
22	0333217423	SPRING WASHER	6	
23	0333222500	SPRING WASHER	3	
24	0300027486	Washer M30	2	
25	0686371626	PLUG	1	
26	0147144503	SCREW, HEX HEAD	8	
27	0147140403	SCREW, HEX HEAD	32	
28	0291112000	LOCK NUT	2	
29	0147132603	SCREW, HEX HEAD	3	
30	0147140203	SCREW, HEX HEAD	2	
31	0147147703	SCREW, HEX HEAD	6	
32	0301235800	FLAT WASHER	34	
33	3376101486	Hydraulic hose	1	
34	3376101519	Hydraulic hose	1	
35	3376100758	Hydraulic motor	1	
36	0663212018	O-ring 110 x 5 mm 70° IRH (NBR)	2	
37	0663211340	O-RING	2	
38	0663212016	O-ring 75 x 5 mm 70° IRH (NBR)	1	
39	0506010022	Bearing	2	

Refer to the DocMine web page for most up-to-date information. The printed information might be outdated.

Wed Jan 12 12:46:42 UTC 2022

Item	Part No.	Name	Qty	L
40	3176657100	ELBOW	2	
41	0661100016	SEAL WASHER	1	
42	3176630100	NIPPLE	4	
43	5750534088	Washer	1	
44	3315439145	Protective plug HATCON	4	
45	3315439101	HATCON label	1	
108	1826101823	Rotation unit	1	B

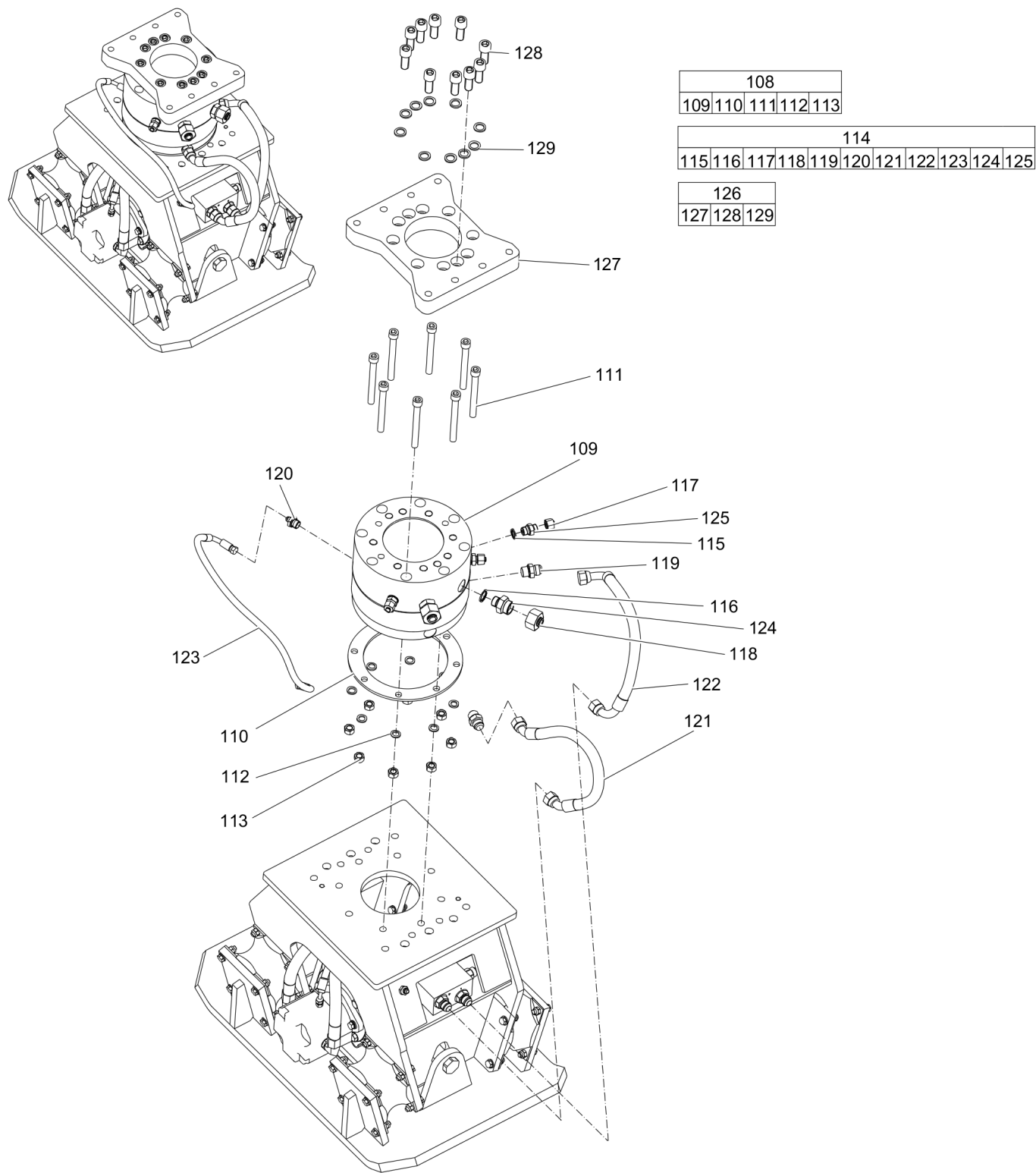
Comments for Page: Hydraulic compactor HC 450 rotating

A | with item 24 and 28

B | see separate chapter

This page intentionally left blank

Mechanical    Rotation unit



Item	Part No.	Name	Qty	L
108(109-113)	1826101823	Rotation unit	1	
109		Rotator	1	
110		Spacer	1	
111		Allen screw	8	
112		LOCK WASHER	8	
113		Hexagon nut, M16 A2K	8	
114(115-125)	3376697437	Hose/Fitting kit	1	
115		SEAL WASHER 21.54x28.58x2.47	3	
116		SEAL WASHER 27.05x34.93x2.47	2	
117		Plug	3	
118		Plug	2	
119		Fitting	2	
120		Fitting	1	
121		Hydraulic hose	1	
122		Hydraulic hose	1	
123		Hydraulic hose	1	
124		Fitting	2	
125		Fitting	3	
126(127-129)	3363115683	Sandwich plate complete	1	
127		Sandwich plate	1	
129	3361850748	Pair of lock washers	10	
128	3360026782	Allen screw	10	

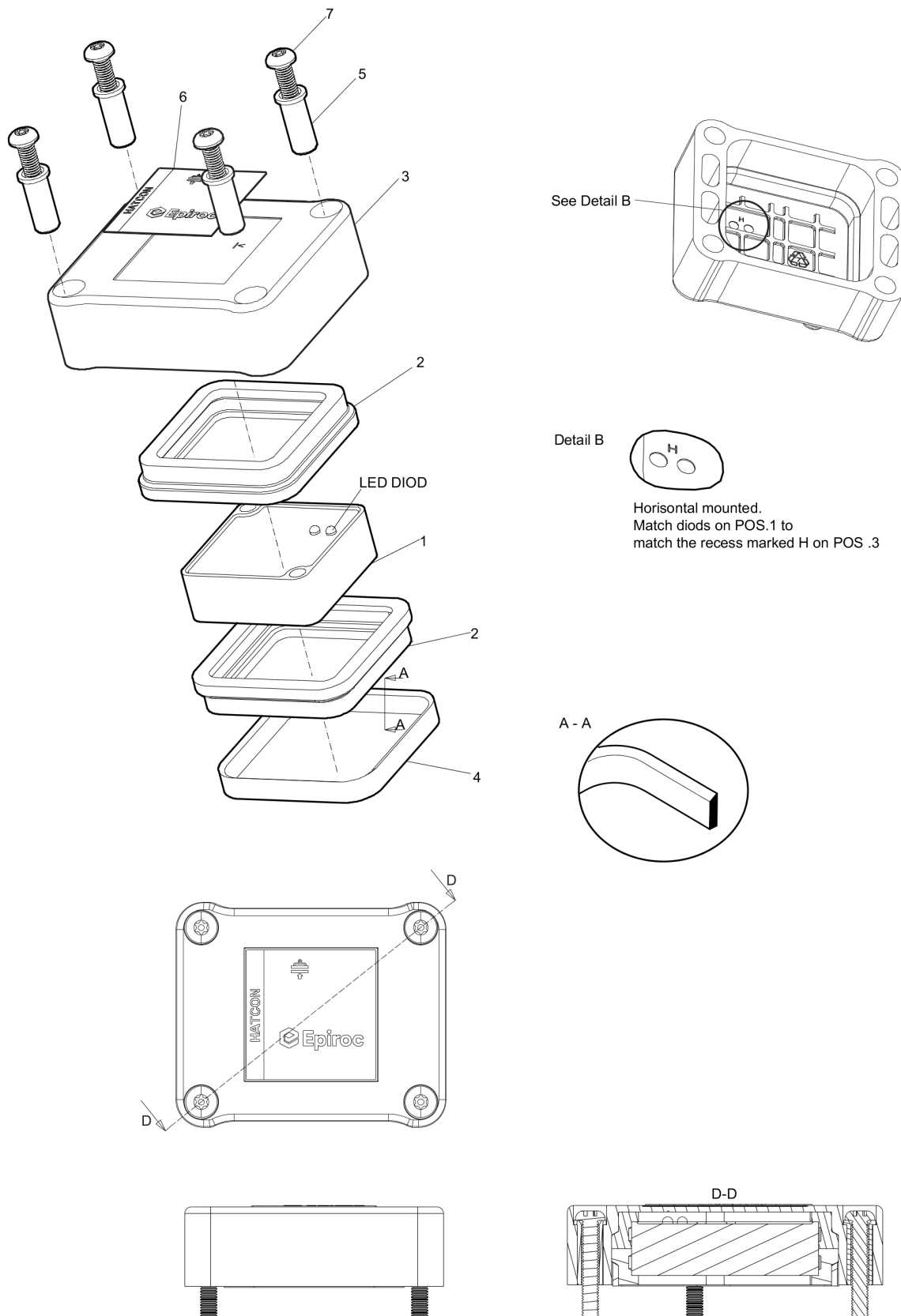
Mechanical Tightening torques

NO EXPLODED VIEW  
AVAILABLE  
FOR THIS BOM



Item	Part No.	Name	Qty	L
1	-	Open-ended wrench - pretighten finger tight, then 1 - 2 turns tighten with the open-ended wrench	-	
13	-	Allen key - pretighten finger tight, then 1 - 2 turns tighten with the Allen key	-	
25	-	Allen key - 78 Nm (57.5 ft lbf)	-	
26	-	Open-ended wrench - 109 Nm (80 ft lbf)	-	
27	-	Open-ended wrench - 69 Nm (51 ft lbf)	-	
29	-	Open-ended wrench - 20 Nm (15 ft lbf)	-	
30	-	Open-ended wrench - 69 Nm (51 ft lbf)	-	
31	-	Open-ended wrench - 171 Nm (126 ft lbf)	-	

## Mechanical HATCON (Horizontal)

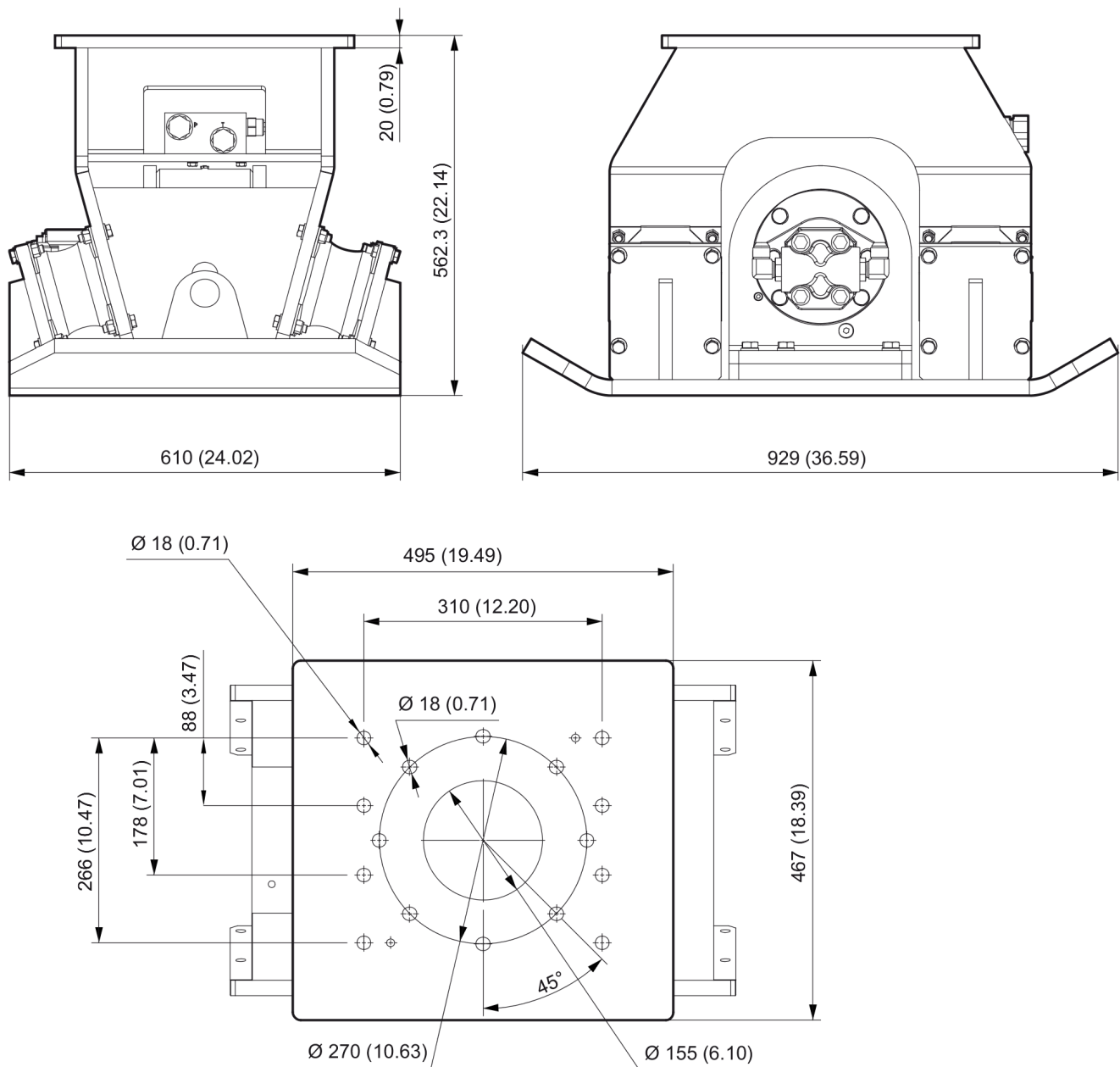


Refer to the DocMine web page for most up-to-date information. The printed information might be outdated.

Wed Jan 12 12:46:45 UTC 2022

Item	Part No.	Name	Qty	L
1		Tracking module HATCON	1	
2	3315439130	Damper HATCON	2	
3	3315439110	Housing type 1 HATCON	1	
4	3315439140	Lock ring HATCON	1	
5	3315439120	Sleeve HATCON	4	
6	3315439100	Product label HATCON	1	
7	3315442600	Screw HATCON	4	

## Mechanical Dimensions HC 450 non rotating

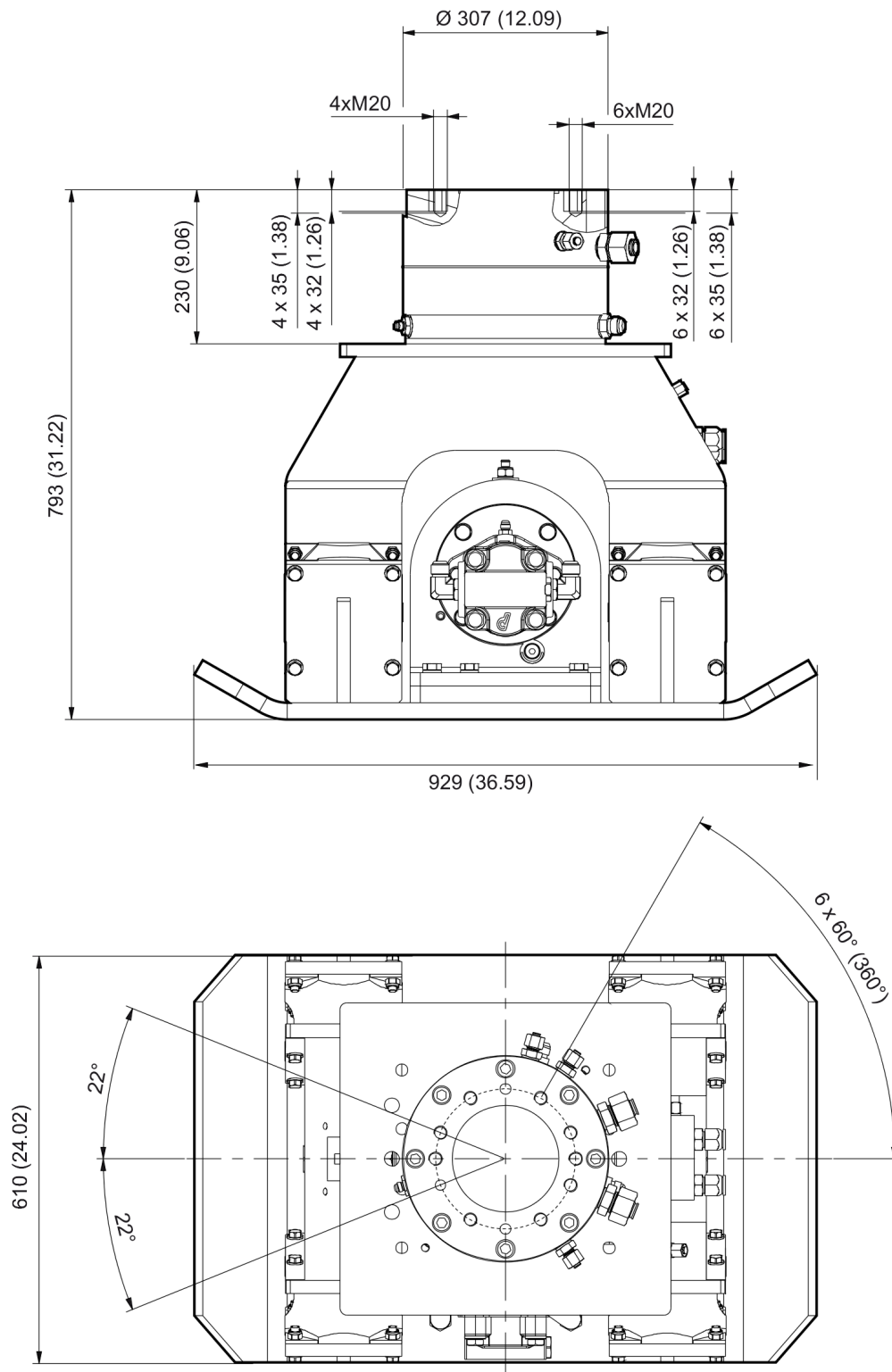


Refer to the DocMine web page for most up-to-date information. The printed information might be outdated.

Wed Jan 12 12:46:45 UTC 2022

This page intentionally left blank

## Mechanical Dimensions HC 450 rotating



Refer to the DocMine web page for most up-to-date information. The printed information might be outdated.

Wed Jan 12 12:46:46 UTC 2022

This page intentionally left blank

Options / accessories Hydraulic hoses

NO EXPLODED VIEW  
AVAILABLE  
FOR THIS BOM



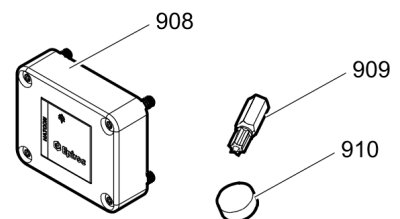
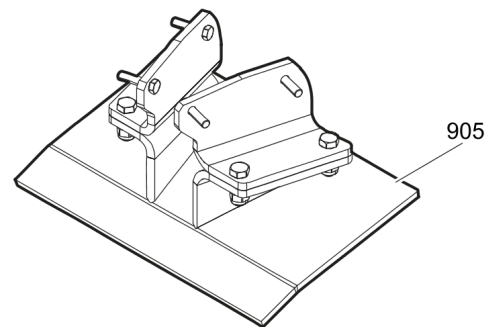
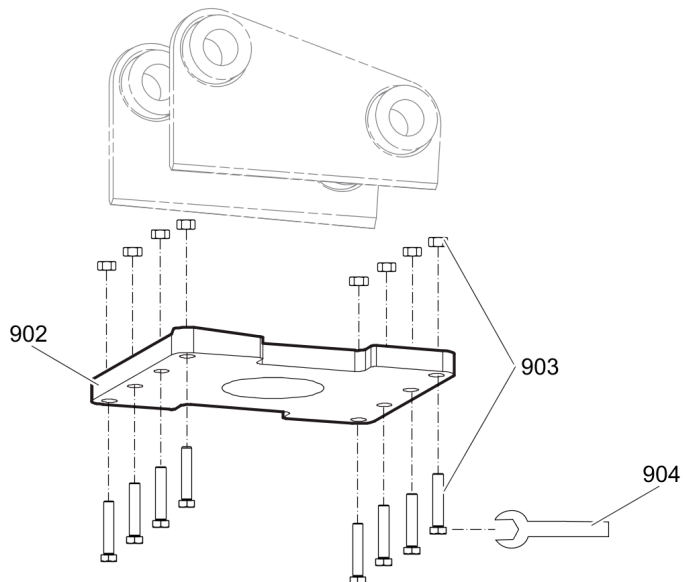
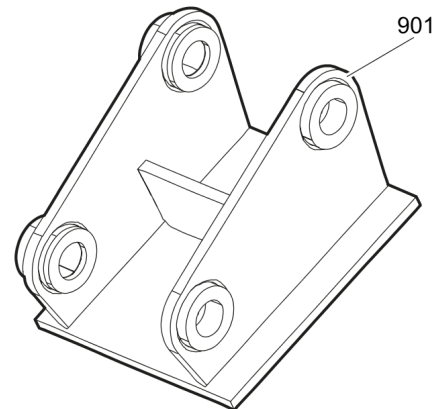
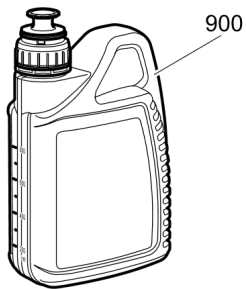
Item	Part No.	Name	Qty	L
Not Shown	-	Pressure line / tank line		
-	3360332294	Hydraulic hose, I.D. 20 (0.79 in.), both ends M36 x 2 mm conical seal 24°, length 2,300 mm (90.5 in.)	2	A
-	3363085947	Hydraulic hose, I.D. 20 (0.79 in.), both ends M36 x 2 mm conical seal 24°, length 2,800 mm (110.2 in.)	2	A
Not Shown	-	Accessories to the hydraulic hoses		
-	3363098287	Fitting set	1	B
Not Shown	-	Drainage for hydraulic motor		
-	3363119625	Hydraulic hose, I.D. 8 (3/8"), M20 x 1.5 conical seal 24° - 9/16-18 JIC, length 2800 mm (110 in.)	1	

Comments for Page: Hydraulic hoses

A | You need a special fitting set when using these hose connections. The fitting set must be ordered separately.

B | Remove the genuine fittings carrier side from the valve block before mounting the fitting set.

## Options / accessories Optional equipment part 1



Item	Part No.	Name	Qty	L
900		Compactor oil	1	A
901		Adapter plate matching the carrier. Consult the authorized Customer Center/Dealer in your area.	1	
902	3315295100	Base plate	1	
903	3315296490	Bolt kit	1	
904	3360430655	Open end spanner (24/27 mm)	1	
905	3376697108	Backfill blade kit	1	
908	3315442500	Retrofit kit HATCON	1	
909	3315439105	Security bit HATCON	1	
910	3315439106	Magnet HATCON	1	

Comments for Page: Optional equipment part 1

A | Oil specification

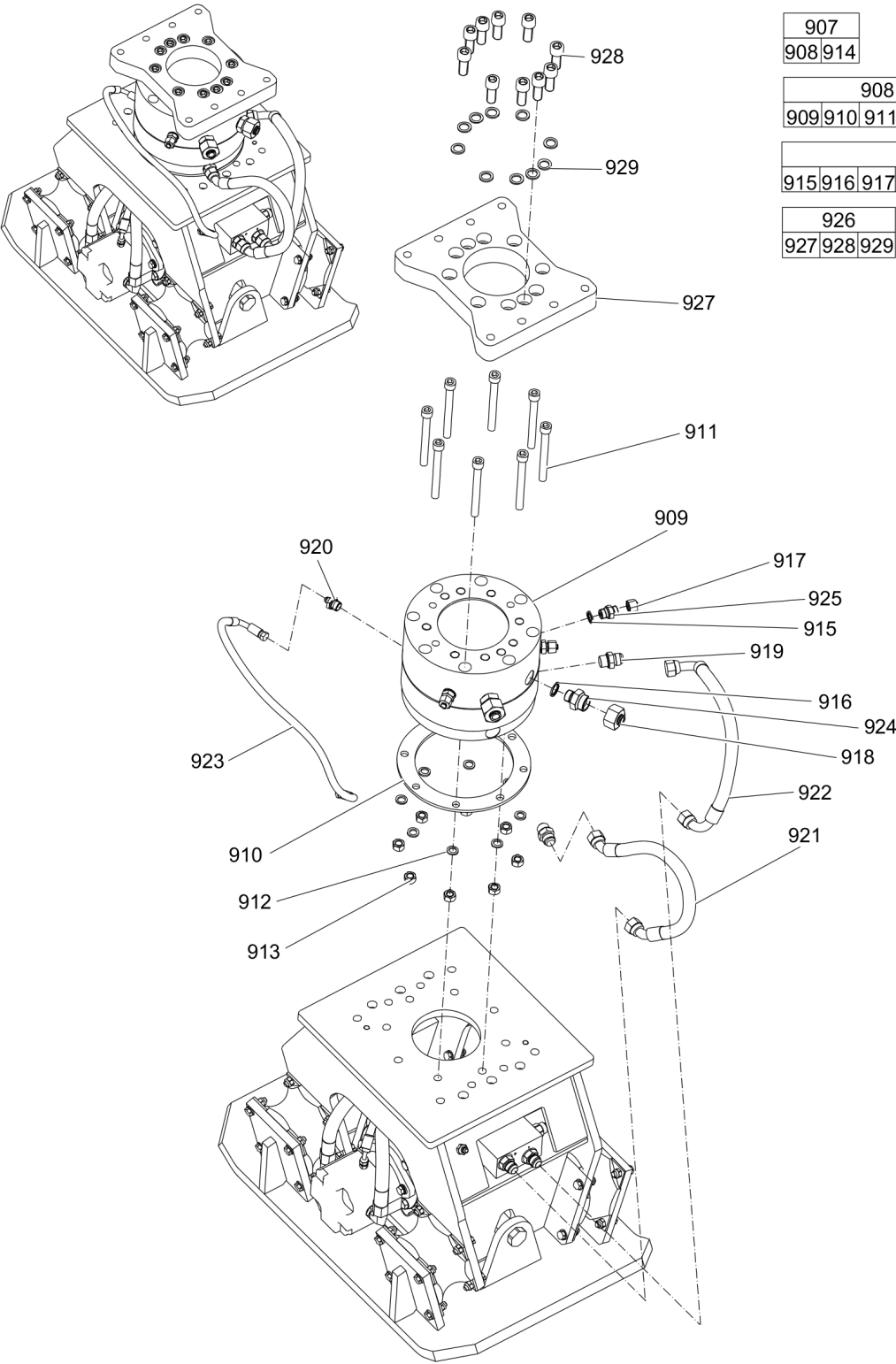
Application: Engine oil

Type: Mineral oil

Viscosity: SAE 15W-40

API Service Classification: CI-4

Options / accessories    Optional equipment part 2



907
908 914

908				
909	910	911	912	913

914									
915	916	917	918	919	920	921	922	923	924

926		
927	928	929

Item	Part No.	Name	Qty	L
907(908-925)	1826101830	Rotation kit	1	
908(909-913)	1826101823	Rotation unit	1	
909		Rotator	1	
910		Spacer	1	
911		Allen screw	8	
912		LOCK WASHER	8	
913		Hexagon nut, M16 A2K	8	
914(915-925)	3376697437	Hose/Fitting kit	1	
915		SEAL WASHER 21.54x28.58x2.47	3	
916		SEAL WASHER 27.05x34.93x2.47	2	
917		Plug	3	
918		Plug	2	
919		Fitting	2	
920		Fitting	1	
921		Hydraulic hose	1	
922		Hydraulic hose	1	
923		Hydraulic hose	1	
924		Fitting	2	
925		Fitting	3	
926(927-929)	3363115683	Sandwich plate complete	1	
927		Sandwich plate	1	
929	3361850748	Pair of lock washers	10	
928	3360026782	Allen screw	10	





Any unauthorized use or copying of the contents or any part thereof is prohibited.  
This applies in particular to trademarks, model denominations, part numbers and drawings.