

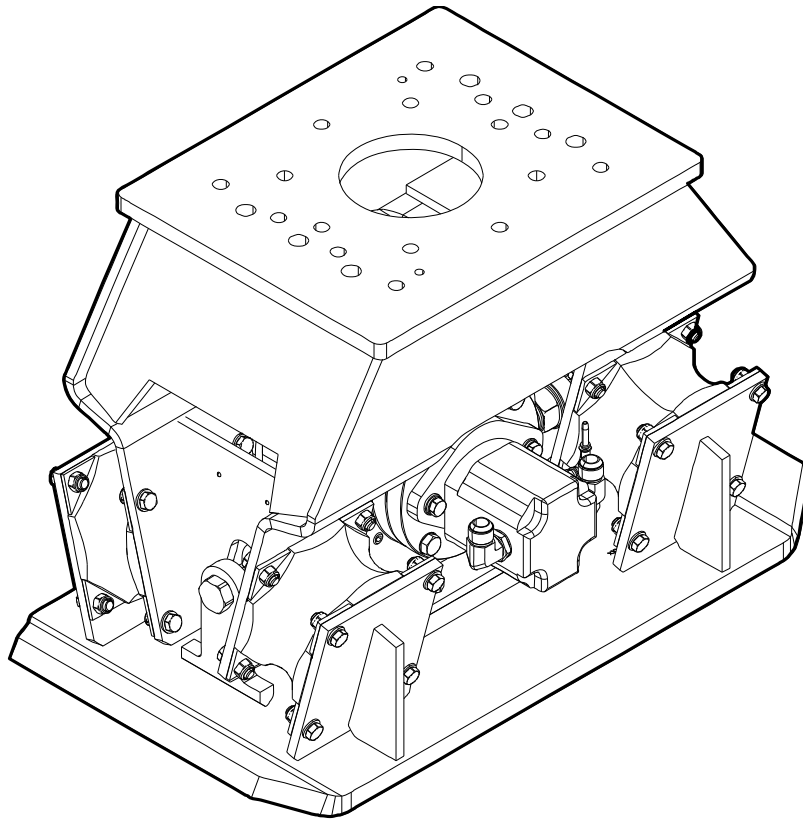
HC 850, HC 850 R

Spare parts list

Hydraulic compactor

HC 850 s/n BES132568 – BES169739

HC 850 R s/n BES132568 – BES169739



General information

This spare parts list applies to the following:

Part number	Description
1826101749	HC 850
8460060007	HC 850 R
8460060008	HC 850 with HATCON
8460060009	HC 850 R with HATCON

Use only authorized parts. Any damage or malfunction caused by the use of unauthorized parts is not covered by Warranty or Product Liability. Any unauthorized use or copying of the contents or any part thereof is prohibited. This applies in particular to trademarks, model denominations, part numbers, and drawings.

Instructions for use

This spare parts list contains no safety regulations and is merely intended to assist in the ordering of spare parts.

For information about operating, servicing, or repairing, the relevant Safety and operating instructions must be consulted at all costs.

Please observe the safety instructions listed in the relevant Safety and operating instructions!

Instructions for ordering

It is essential to indicate the serial number of the hydraulic attachment when ordering spare parts!

Please note the full identification number of your hydraulic attachment.

Determine the quantity of individual parts which are required and need to be ordered. The order must indicate the following details:

- full identification code of the hydraulic attachment
- required quantity
- part number
- description

Service, repair and wear part kits

Kit list

Mechanical

Options / accessories

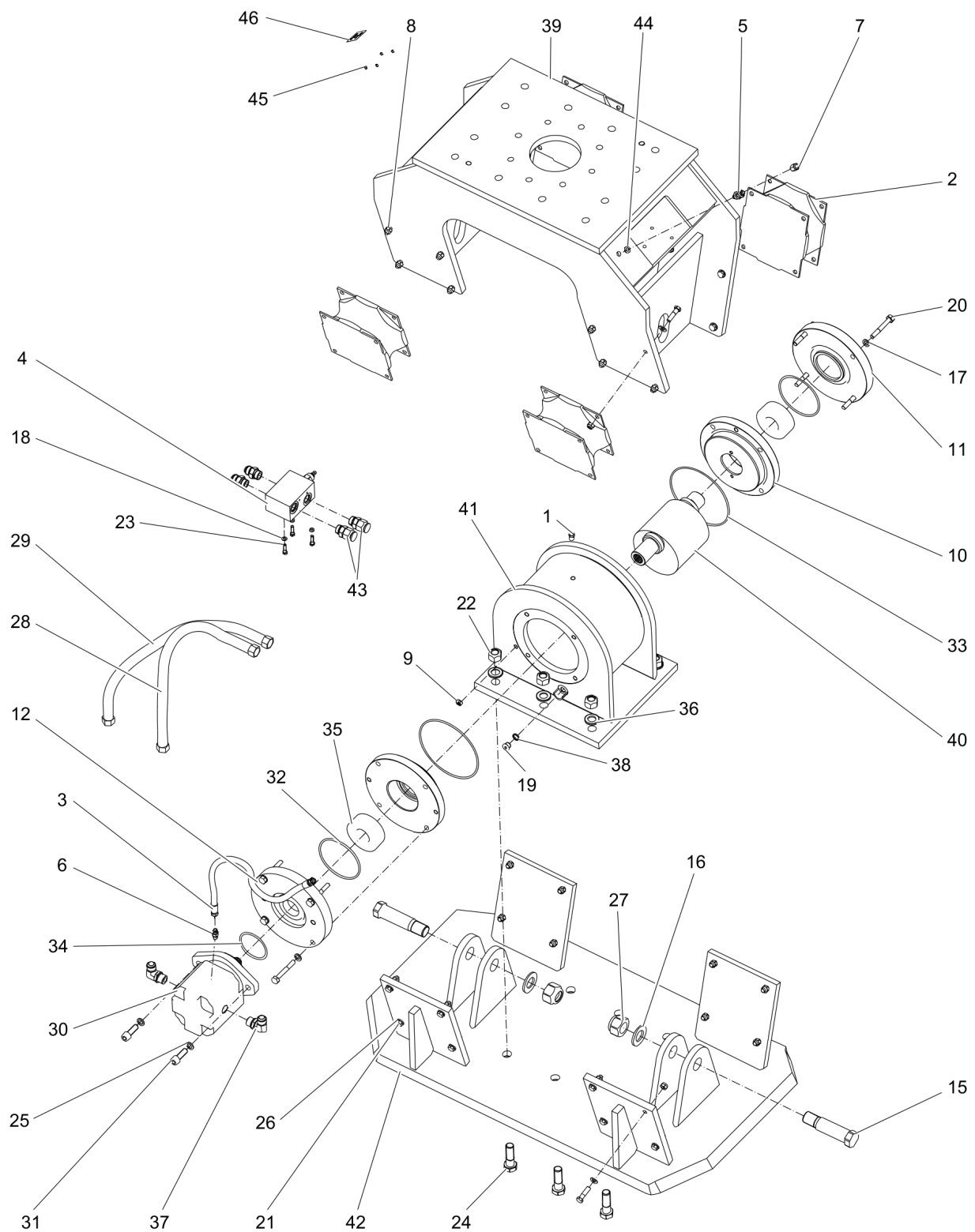
Kit list	1
Hydraulic compactor HC 850 non rotating	3
Hydraulic compactor HC 850 rotating	6
Rotation unit	10
Tightening torques	13
HATCON (Horizontal)	15
Dimensions HC 850 non rotating	17
Dimensions HC 850 rotating	18
Hydraulic hoses	20
Optional equipment part 1	23
Optional equipment part 2	25

Service, repair and wear part kits Kit list

NO EXPLODED VIEW
AVAILABLE
FOR THIS BOM

Item	Part No.	Name	Qty	L
KIT	3376698231	Label kit	1	
KIT	3376692036	Seal kit (Hydraulic motor)	1	
KIT	3376692032	Rubber isolator kit	1	
2	3376100730	Rubber isolator	4	
8	0291111200	Lock nut	32	
21	0147140403	SCREW, HEX HEAD	32	
26	0301235800	FLAT WASHER	32	
KIT	3376100997	Seal kit (Rotator)	1	

Mechanical Hydraulic compactor HC 850 non rotating



Refer to the DocMine web page for most up-to-date information. The printed information might be outdated.
Wed Jan 12 12:39:21 UTC 2022

Item	Part No.	Name	Qty	L
1	3376100779	Vent valve	1	
2	3376100730	Rubber isolator	4	
3	3376101524	Hydraulic hose	1	
4	3376692007	Valve block, female thread 1 1/16" - 12 UNF	1	
5	3176649600	NIPPLE	1	
6	0570501073	Fitting, straight UNF 9/16-18, NPT 1/4-18	1	
7	3176542900	CAP	1	
8	0291111200	Lock nut	32	
9	0686612800	PLUG	1	
10	3376698013	Bearing retainer	2	
11	3376698012	Bearing cover	1	
12	3363123130	Bearing cover	1	
15	3376698143	Axle	2	B
16	0300012949	PLAIN WASHER	2	
17	3376100771	Washer	8	
18	3377000653	Washer	3	
19	0686371626	PLUG	1	
20	0147145003	SCREW, HEX HEAD	8	
21	0147140403	SCREW, HEX HEAD	32	
22	3376100066	Nut	6	
23	0147132603	SCREW, HEX HEAD	3	
24	0147163603	SCREW, HEX HEAD	6	
25	3315019510	LOCK WASHER	2	
26	0301235800	FLAT WASHER	32	
27	0291112832	LOCK NUT	2	
28	3376100781	Hydraulic hose	1	
29	3376100782	Hydraulic hose	1	
30	3376100727	Hydraulic motor	1	
31	0211147800	SCREW	2	
32	0663211340	O-RING	2	
33	3376100780	O-ring	2	
34	3363123133	O-ring	1	
35	3376100737	Bearing	2	
36	0301240500	PLAIN WASHER	6	
37	3176657100	ELBOW	2	
38	3377016375	Seal ring - Bounded seal - Oil outlet 3/8 USS	1	
39	3376698406	Outer housing	1	

Refer to the DocMine web page for most up-to-date information. The printed information might be outdated.

Wed Jan 12 12:39:21 UTC 2022

Item	Part No.	Name	Qty	L
40	3376692004	Rotor	1	
41	3376698409	Rotor housing	1	
42	3376698035	Tamper plate	1	A
43	3176630100	NIPPLE	4	
44	5750534088	Washer	1	
45	3315439145	Protective plug HATCON	4	
46	3315439101	HATCON label	1	

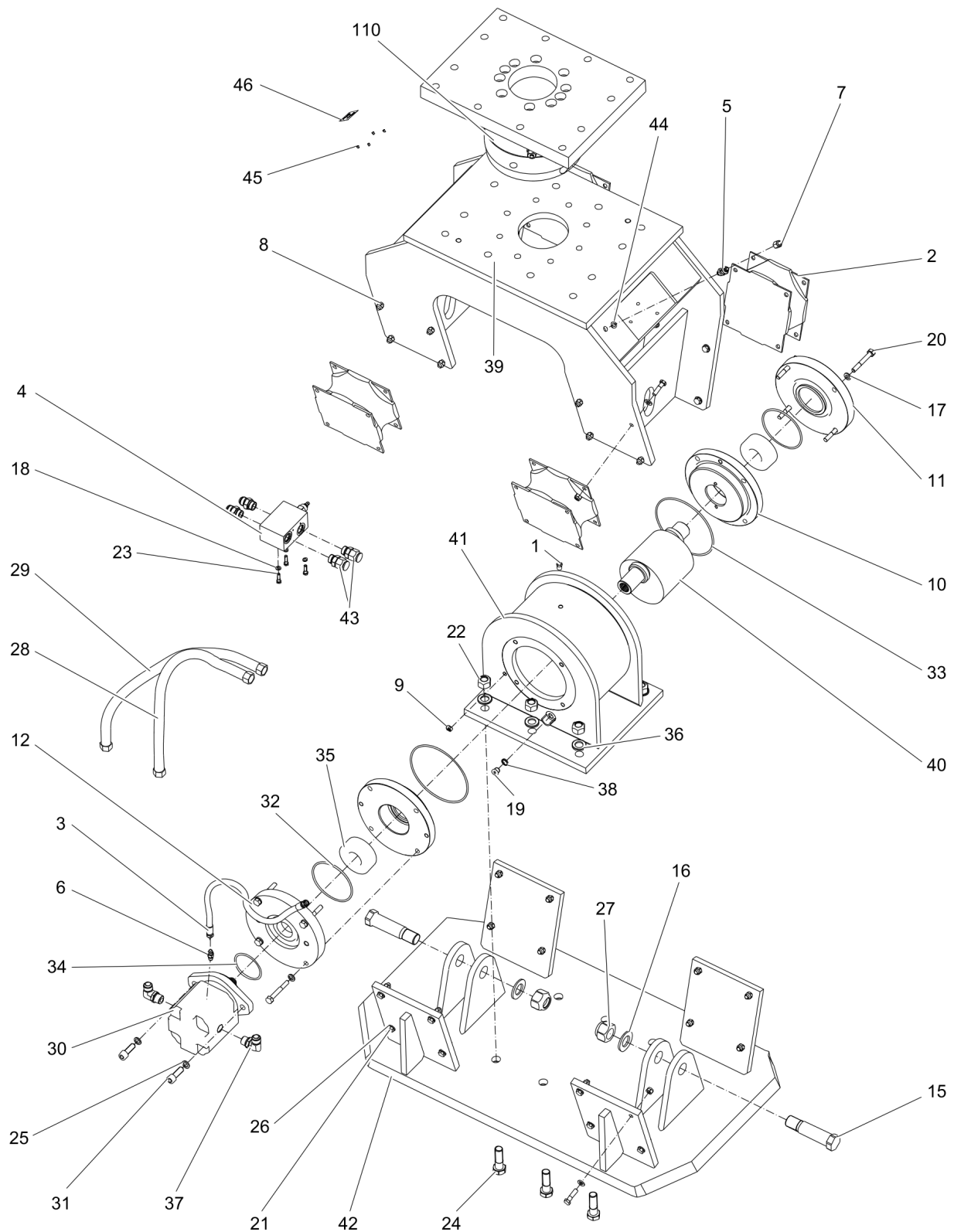
Comments for Page: Hydraulic compactor HC 850 non rotating

A | with items 22, 24 and 36

B | with items 16 and 27

This page intentionally left blank

Mechanical Hydraulic compactor HC 850 rotating



Item	Part No.	Name	Qty	L
1	3376100779	Vent valve	1	
2	3376100730	Rubber isolator	4	
3	3376101524	Hydraulic hose	1	
4	3376692007	Valve block, female thread 1 1/16" - 12 UNF	1	
5	3176649600	NIPPLE	1	
6	0570501073	Fitting, straight UNF 9/16-18, NPT 1/4-18	1	
7	3176542900	CAP	1	
8	0291111200	Lock nut	32	
9	0686612800	PLUG	1	
10	3376698013	Bearing retainer	2	
11	3376698012	Bearing cover	1	
12	3363123130	Bearing cover	1	
15	3376698143	Axle	2	B
16	0300012949	PLAIN WASHER	2	
17	3376100771	Washer	8	
18	3377000653	Washer	3	
19	0686371626	PLUG	1	
20	0147145003	SCREW, HEX HEAD	8	
21	0147140403	SCREW, HEX HEAD	32	
22	3376100066	Nut	6	
23	0147132603	SCREW, HEX HEAD	3	
24	0147163603	SCREW, HEX HEAD	6	
25	3315019510	LOCK WASHER	2	
26	0301235800	FLAT WASHER	32	
27	0291112832	LOCK NUT	2	
28	3376100781	Hydraulic hose	1	
29	3376100782	Hydraulic hose	1	
30	3376100727	Hydraulic motor	1	
31	0211147800	SCREW	2	
32	0663211340	O-RING	2	
33	3376100780	O-ring	2	
34	3363123133	O-ring	1	
35	3376100737	Bearing	2	
36	0301240500	PLAIN WASHER	6	
37	3176657100	ELBOW	2	
38	3377016375	Seal ring - Bounded seal - Oil outlet 3/8 USS	1	
39	3376698406	Outer housing	1	

Refer to the DocMine web page for most up-to-date information. The printed information might be outdated.

Wed Jan 12 12:39:23 UTC 2022

Item	Part No.	Name	Qty	L
40	3376692004	Rotor	1	
41	3376698409	Rotor housing	1	
42	3376698035	Tamper plate	1	A
43	3176630100	NIPPLE	4	
44	5750534088	Washer	1	
45	3315439145	Protective plug HATCON	4	
46	3315439101	HATCON label	1	
110	1826101823	Rotation unit	1	C

Comments for Page: Hydraulic compactor HC 850 rotating

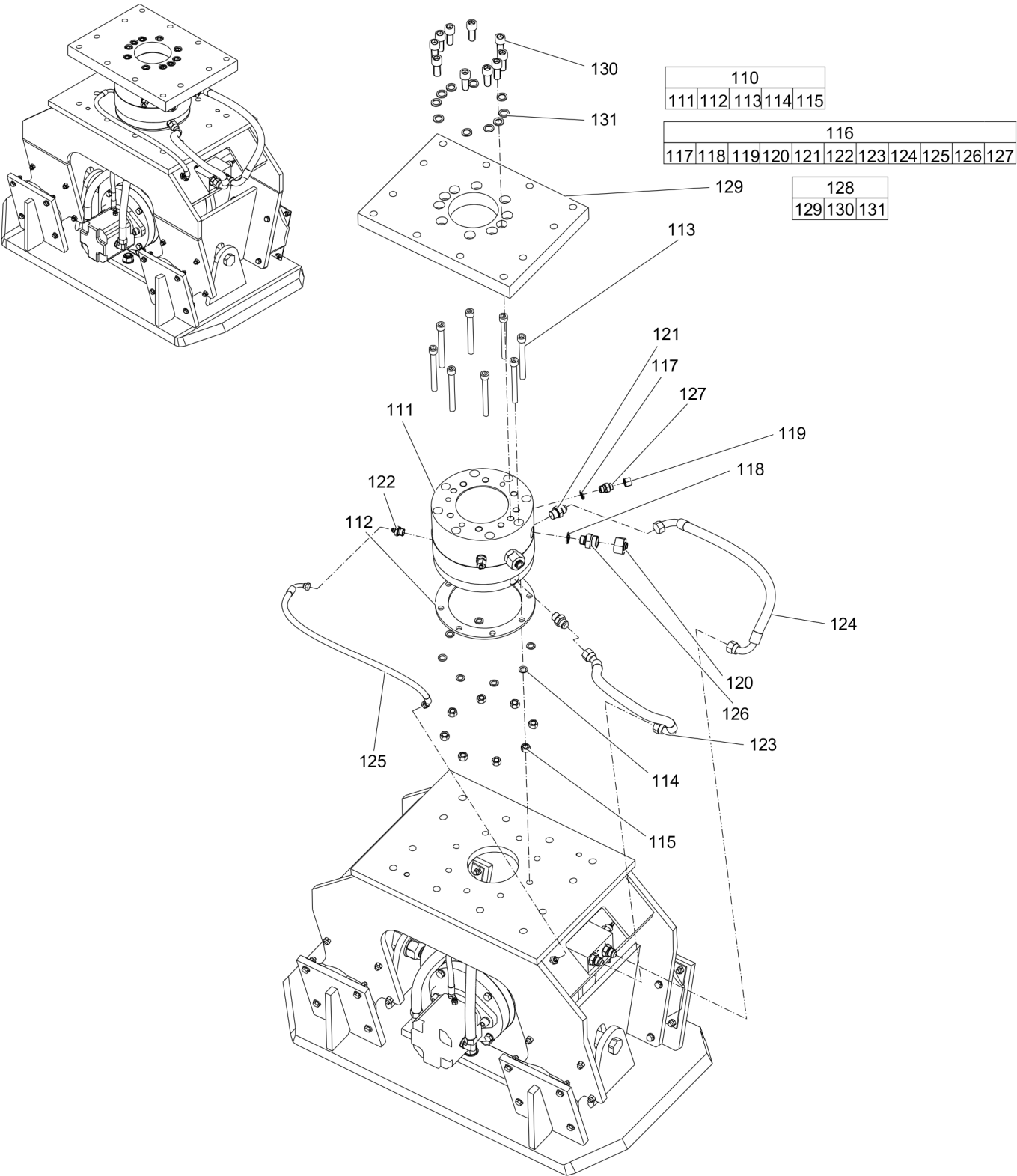
A | with items 22, 24 and 36

B | with items 16 and 27

C | see separate chapter

This page intentionally left blank

Mechanical Rotation unit



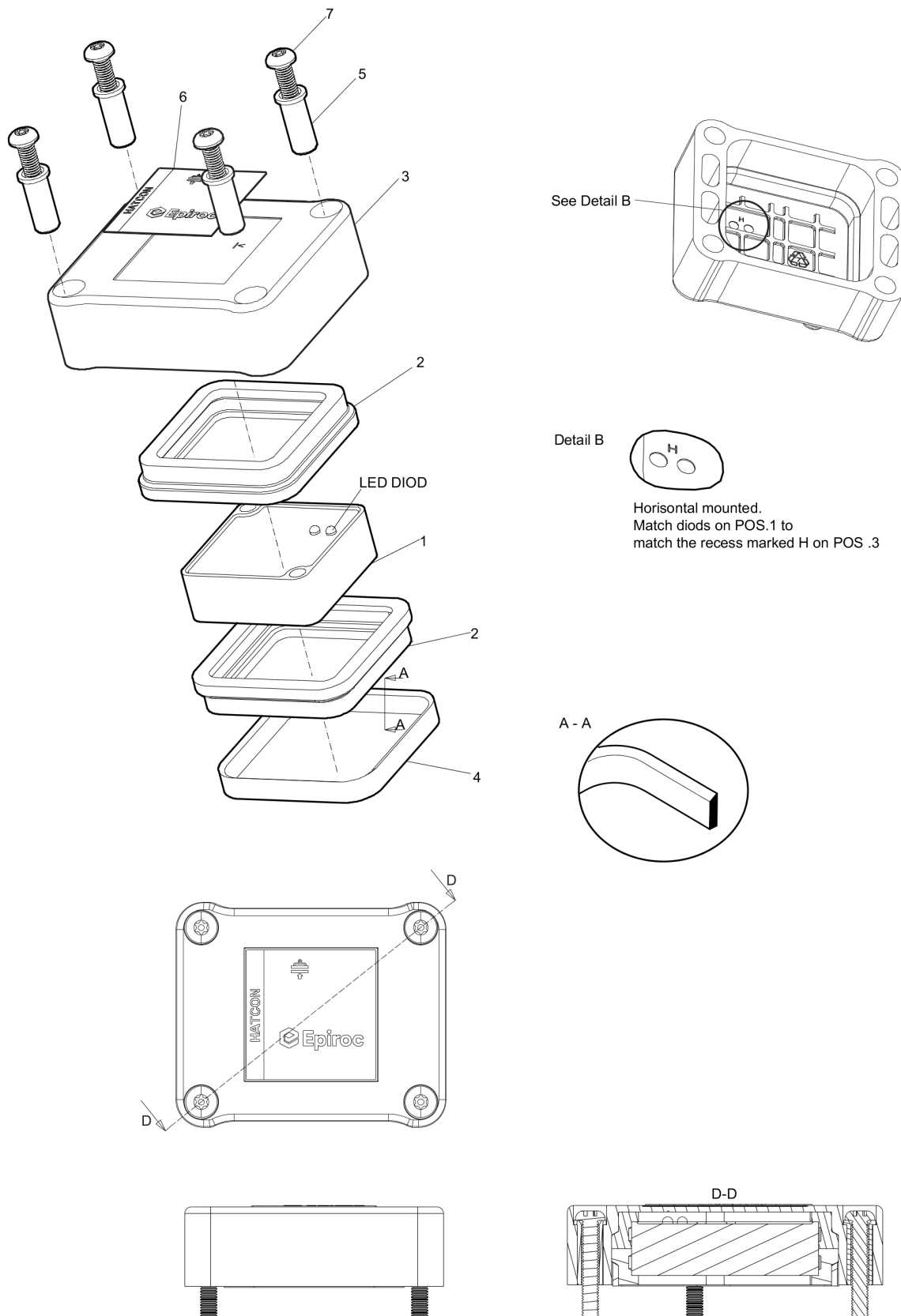
Item	Part No.	Name	Qty	L
110(111-115)	1826101823	Rotation unit	1	
111		Rotator	1	
112		Spacer	1	
113		Allen screw	8	
114		LOCK WASHER	8	
115		Hexagon nut, M16 A2K	8	
116(117-127)	3376698437	Hose/Fitting kit	1	
117		U-seal ring 1/2	3	
118		Seal	2	
119		Plug	3	
120		Plug	2	
121		Fitting	2	
122		Fitting	1	
123		Hydraulic hose	1	
124		Hydraulic hose	1	
125		Hydraulic hose	1	
126		Fitting	2	
127		Fitting	3	
128(129-131)	3363115678	Sandwich plate complete	1	
129		Sandwich plate	1	
130	3360026782	Allen screw	10	
131	3361850748	Pair of lock washers	10	

Mechanical Tightening torques

NO EXPLODED VIEW
AVAILABLE
FOR THIS BOM

Item	Part No.	Name	Qty	L
1	-	Open-ended wrench - pretighten finger tight, then 1 - 2 turns tighten with the open-ended wrench	-	
8	-	Open-ended wrench - 329 Nm (243 ft lbf)	-	
9	-	Allen key - pretighten finger tight, then 1 - 2 turns tighten with the Allen key	-	
19	-	Allen key - 30.5 Nm (22.5 ft lbf)	-	
20	-	Open-ended wrench - 148 Nm (109 ft lbf)	-	
21	-	Open-ended wrench - 329 Nm (243 ft lbf)	-	
22	-	Open-ended wrench - 798 Nm (589 ft lbf)	-	
23	-	Open-ended wrench - 20 Nm (15 ft lbf)	-	
24	-	Open-ended wrench - 798 Nm (589 ft lbf)	-	
31	-	Open-ended wrench - 230 Nm (170 ft lbf)	-	

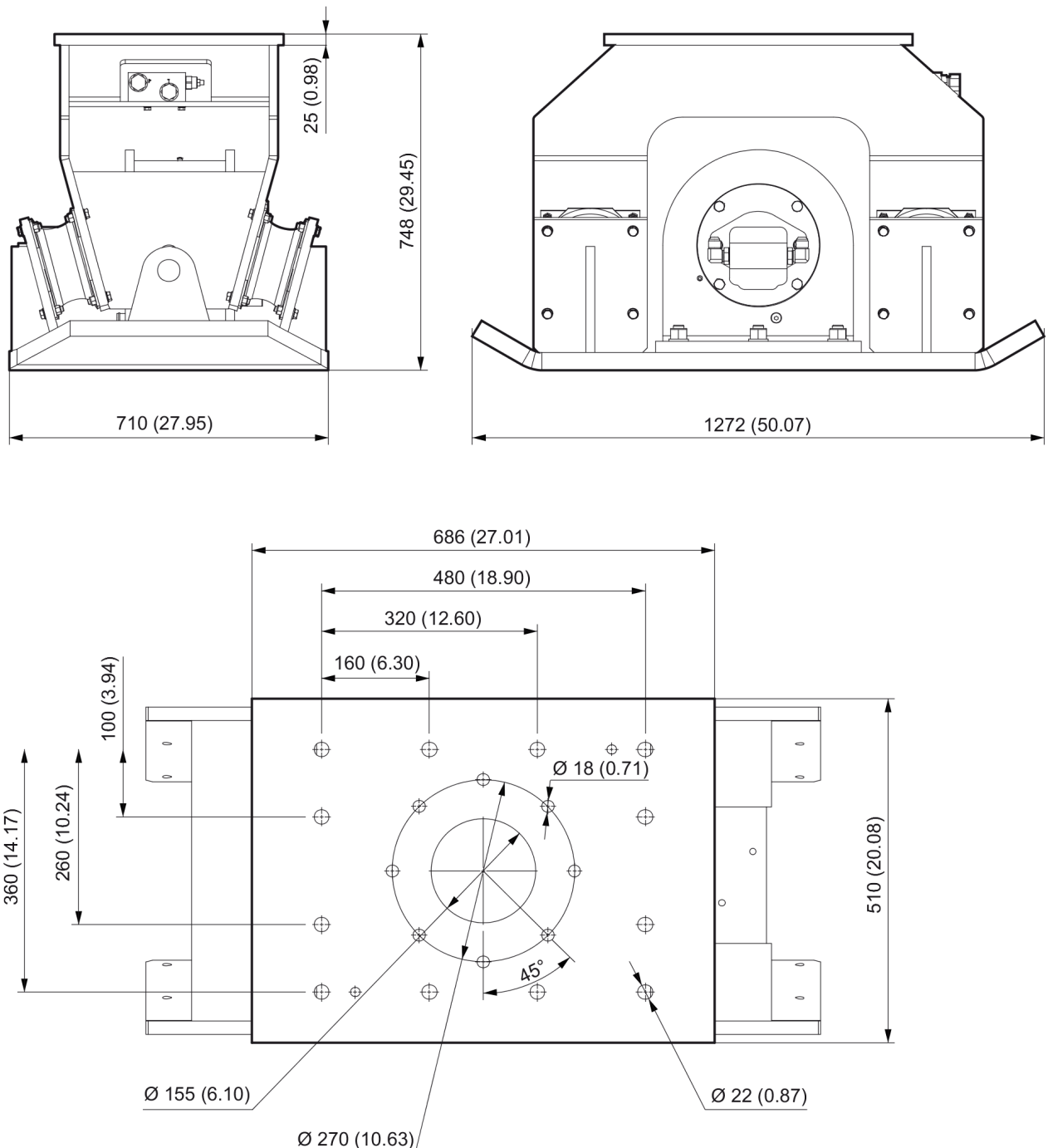
Mechanical HATCON (Horizontal)



Refer to the DocMine web page for most up-to-date information. The printed information might be outdated.

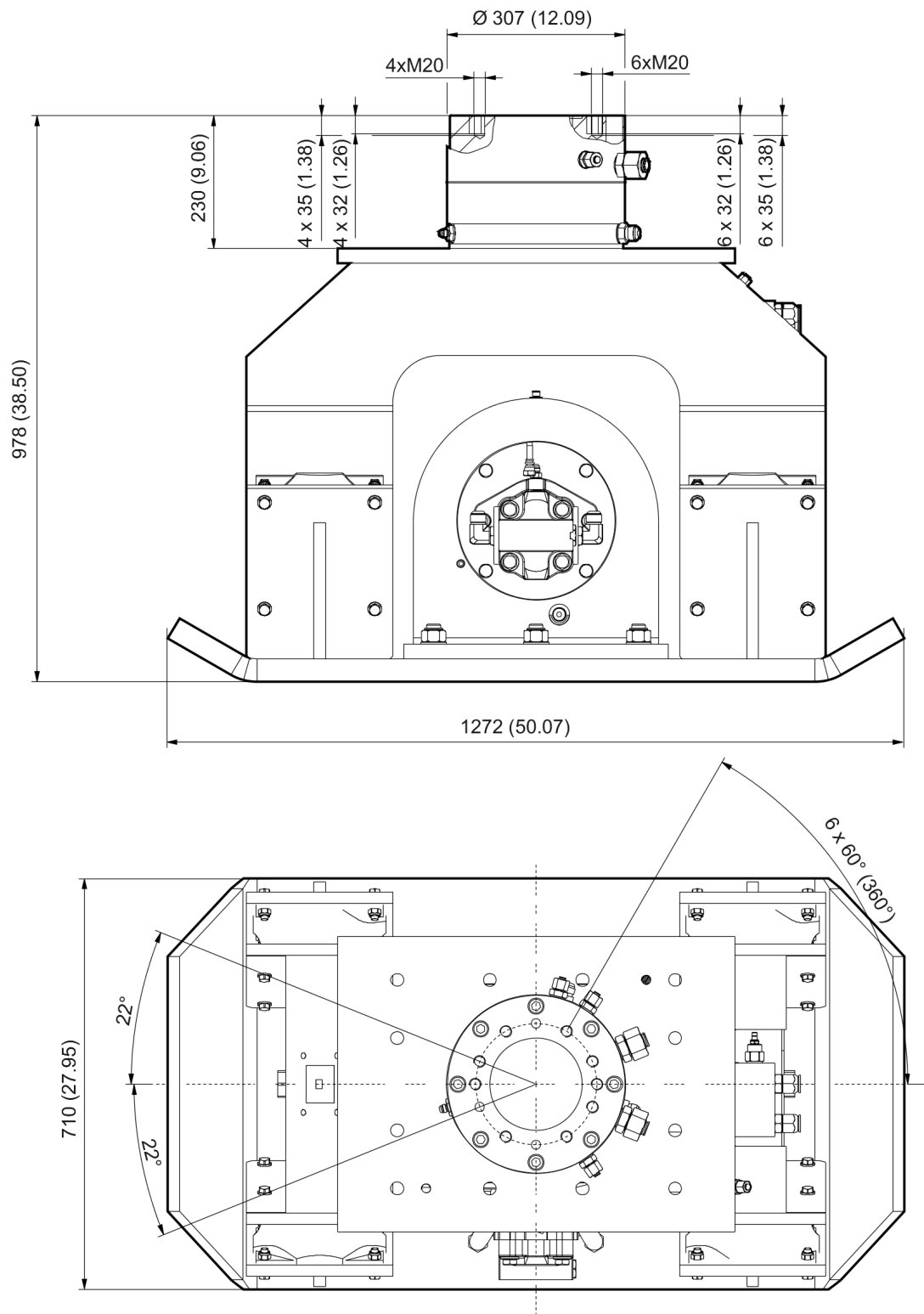
Wed Jan 12 12:39:26 UTC 2022

Item	Part No.	Name	Qty	L
1		Tracking module HATCON	1	
2	3315439130	Damper HATCON	2	
3	3315439110	Housing type 1 HATCON	1	
4	3315439140	Lock ring HATCON	1	
5	3315439120	Sleeve HATCON	4	
6	3315439100	Product label HATCON	1	
7	3315442600	Screw HATCON	4	



This page intentionally left blank

Mechanical Dimensions HC 850 rotating



Refer to the DocMine web page for most up-to-date information. The printed information might be outdated.

Wed Jan 12 12:39:27 UTC 2022

This page intentionally left blank

Options / accessories Hydraulic hoses

NO EXPLODED VIEW
AVAILABLE
FOR THIS BOM

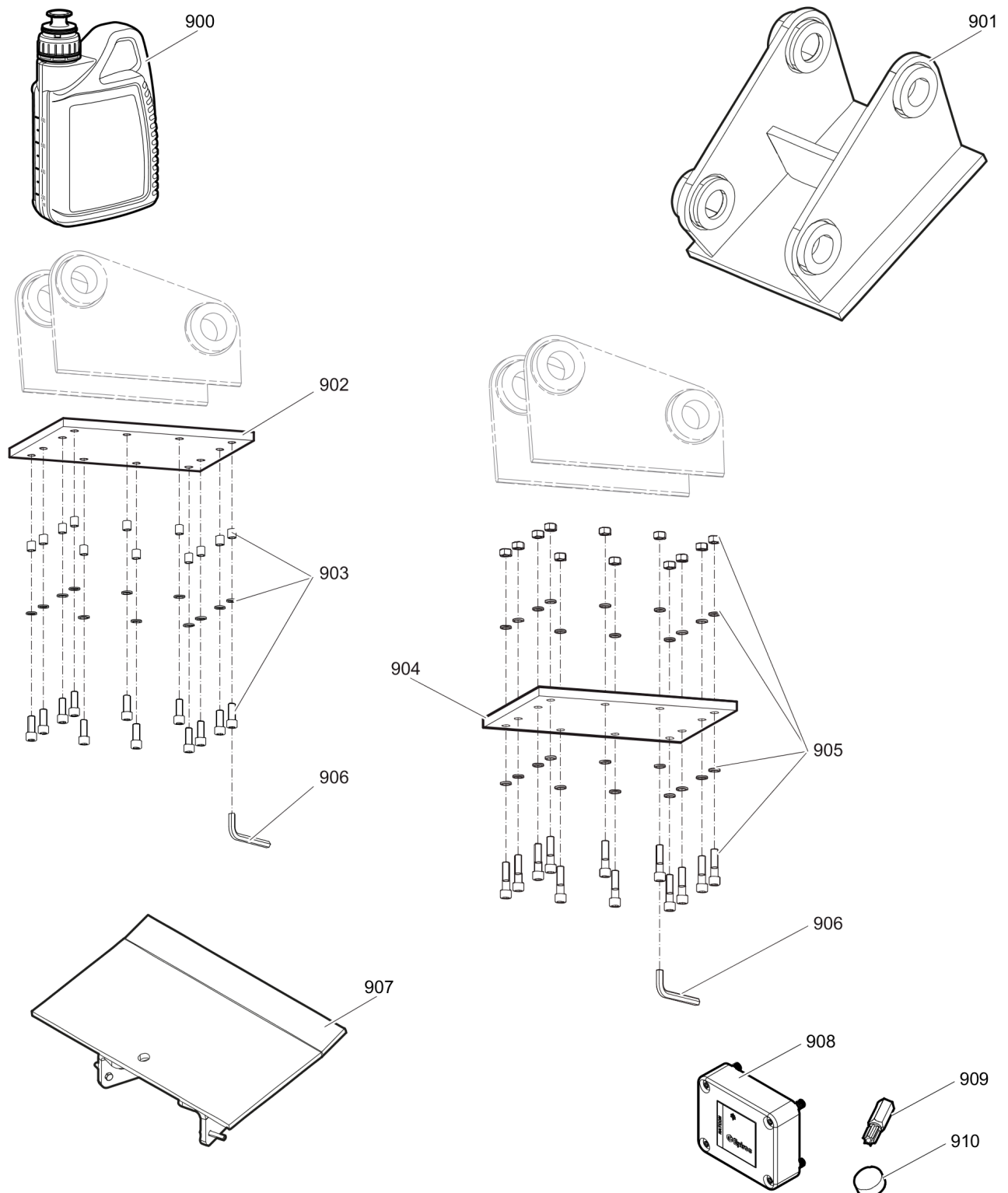
Item	Part No.	Name	Qty	L
Not Shown	-	Pressure line / tank line		
-	3360332294	Hydraulic hose, I.D. 20 (0.79 in.), both ends M36 x 2 mm conical seal 24°, length 2,300 mm (90.5 in.)	2	A
-	3363085947	Hydraulic hose, I.D. 20 (0.79 in.), both ends M36 x 2 mm conical seal 24°, length 2,800 mm (110.2 in.)	2	A
Not Shown	-	Accessories to the hydraulic hoses		
-	3363098287	Fitting set	1	B
Not Shown	-	Drainage for hydraulic motor		
-	3363119625	Hydraulic hose, I.D. 8 (3/8"), M20 x 1.5 conical seal 24° - 9/16-18 JIC, length 2800 mm (110 in.)	1	

Comments for Page: Hydraulic hoses

A | You need a special fitting set when using these hose connections. The fitting set must be ordered separately.

B | Remove the genuine fittings carrier side from the valve block before mounting the fitting set.

Options / accessories Optional equipment part 1



Refer to the DocMine web page for most up-to-date information. The printed information might be outdated.

Wed Jan 12 12:39:28 UTC 2022

Item	Part No.	Name	Qty	L
900		Compactor oil	1	A
901		Adapter plate matching the carrier. Consult the authorized Customer Center/Dealer in your area.	1	
902	3363099797	Base plate with threaded inserts	1	
903	3363094537	Bolt kit	1	
904	3363100695	Base plate with through borings	1	
905	3363094574	Bolt kit	1	
906	3360209253	Allen key (19 mm)	1	
907	3376698108	Backfill blade kit	1	
908	3315442500	Retrofit kit HATCON	1	
909	3315439105	Security bit HATCON	1	
910	3315439106	Magnet HATCON	1	

Comments for Page: Optional equipment part 1

A | Oil specification

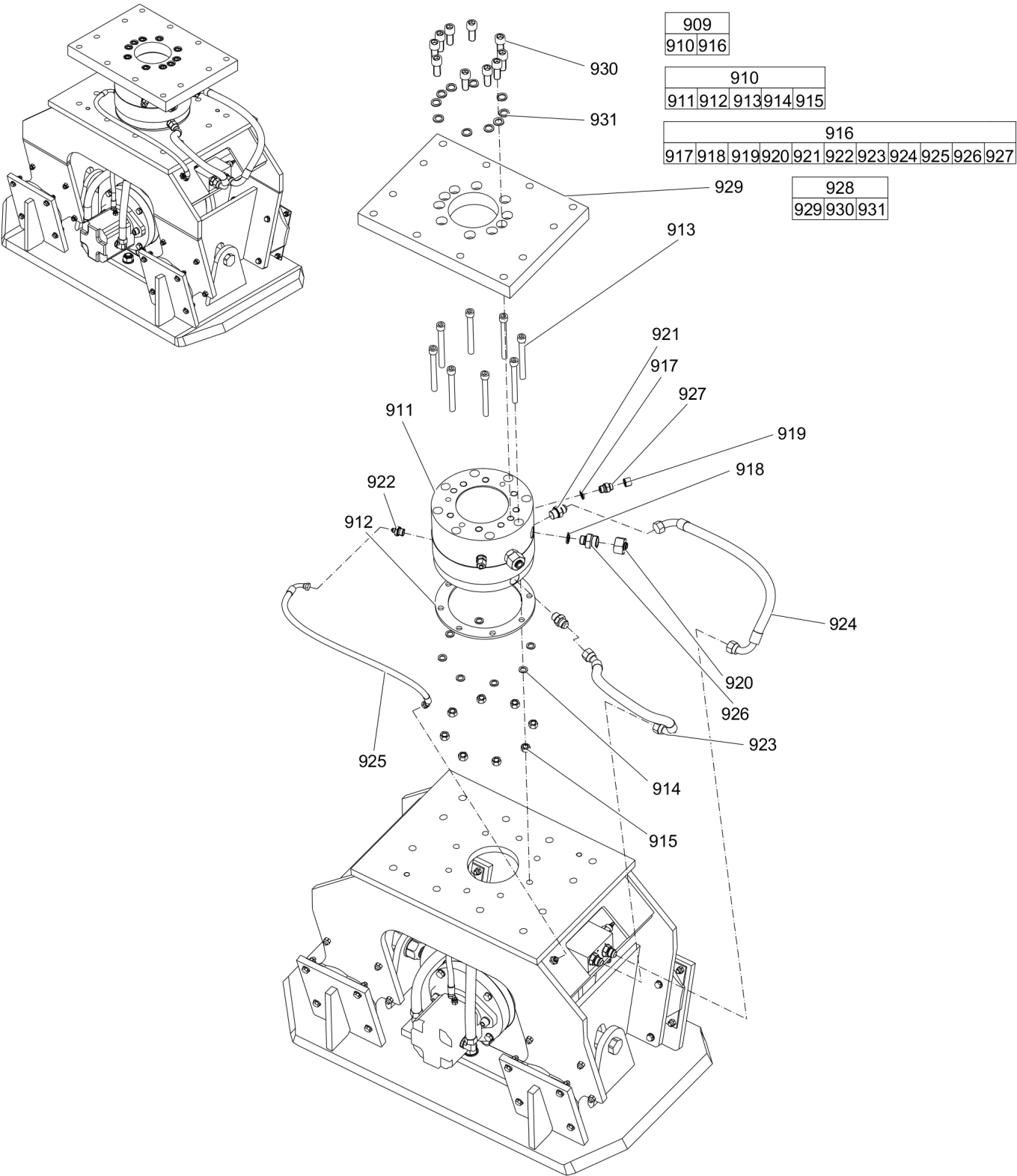
Application: Engine oil

Type: Mineral oil

Viscosity: SAE 15W-40

API Service Classification: CI-4

Options / accessories Optional equipment part 2



Item	Part No.	Name	Qty	L
909(910-927)	1826101831	Rotation kit	1	
910(911-915)	1826101823	Rotation unit	1	
911		Rotator	1	
912		Spacer	1	
913		Allen screw	8	
914		LOCK WASHER	8	
915		Hexagon nut, M16 A2K	8	
916(917-927)	3376698437	Hose/Fitting kit	1	
917		U-seal ring 1/2	3	
918		Seal	2	
919		Plug	3	
920		Plug	2	
921		Fitting	2	
922		Fitting	1	
923		Hydraulic hose	1	
924		Hydraulic hose	1	
925		Hydraulic hose	1	
926		Fitting	2	
927		Fitting	3	
928(929-931)	3363115678	Sandwich plate complete	1	
929		Sandwich plate	1	
930	3360026782	Allen screw	10	
931	3361850748	Pair of lock washers	10	

Any unauthorized use or copying of the contents or any part thereof is prohibited.
This applies in particular to trademarks, model denominations, part numbers and drawings.