

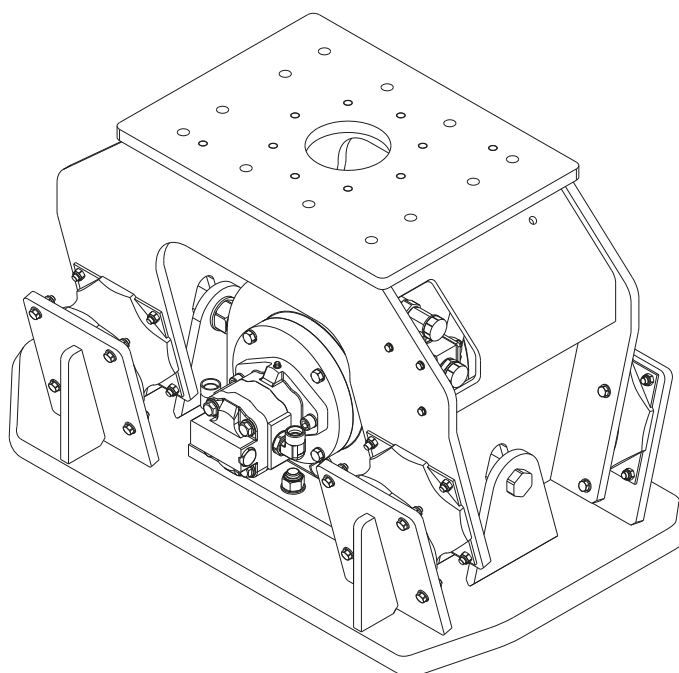
HC 850, HC 850 R

Spare parts list

Hydraulic compactor

HC 850 s/n BES170668 -

HC 850 R s/n BES 170668 -



General information

This spare parts list applies to the following:

Part number	Description
8460060021	Hydraulic compactor HC 850
8460060022	Hydraulic compactor HC 850 R
8460060023	Hydraulic compactor HC 850 with HATCON
8460060024	Hydraulic compactor HC 850 R with HATCON
8460060033	Hydraulic compactor HC 850 with HATCON LTE
8460060034	Hydraulic compactor HC 850 R with HATCON LTE

Use only authorized parts. Any damage or malfunction caused by the use of unauthorized parts is not covered by Warranty or Product Liability. Any unauthorized use or copying of the contents or any part thereof is prohibited. This applies in particular to trademarks, model denominations, part numbers, and drawings.

Instructions for use

This spare parts list contains no safety regulations and is merely intended to assist in the ordering of spare parts.

For information about operating, servicing, or repairing, the relevant Safety and operating instructions must be consulted at all costs.

Please observe the safety instructions listed in the relevant Safety and operating instructions!

Instructions for ordering

It is essential to indicate the serial number of the hydraulic attachment when ordering spare parts!

Please note the full identification number of your hydraulic attachment.

Determine the quantity of individual parts which are required and need to be ordered. The order must indicate the following details:

- full identification code of the hydraulic attachment
- required quantity
- part number
- description

Service, repair and wear part kits

Kit list 1

Mechanical

Hydraulic compactor HC 850 non rotating3

Hydraulic compactor HC 850 rotating6

Rotation unit10

Tightening torques 13

HATCON (Horizontal) 15

Dimensions HC 850 non rotating 17

Dimensions HC 850 rotating 18

Options / accessories

Hydraulic hoses 20

Optional equipment part 1 23

Optional equipment part 2 25

Service, repair and wear part kits Kit list

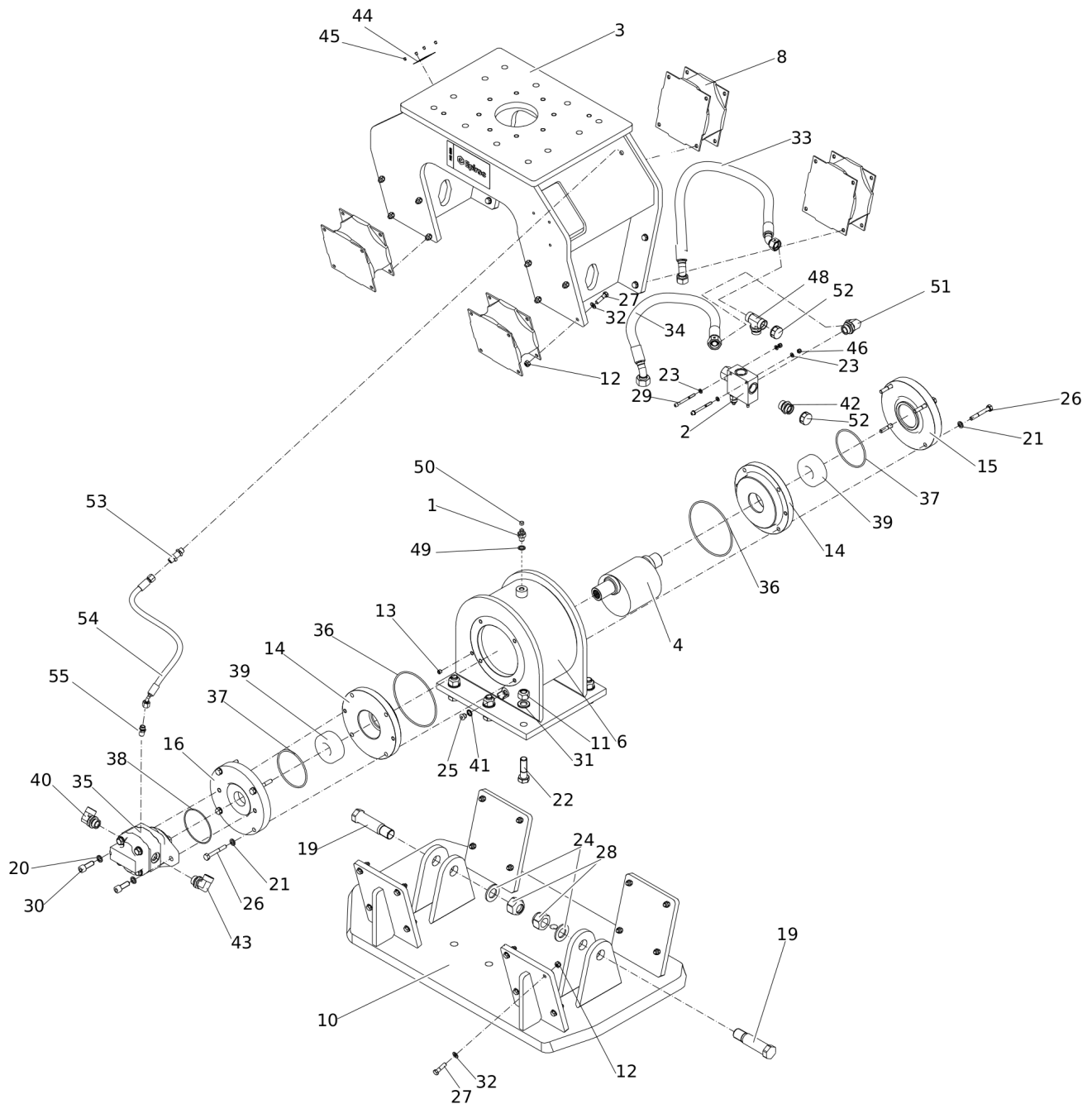
NO EXPLODED VIEW
AVAILABLE
FOR THIS BOM

Item	Part No.	Name	Qty	L
KIT	3376698231	LABEL KIT	1	
KIT	3376692036	SEAL KIT (Hydraulic motor)	1	
KIT	3376692032	RUBBER ISOLATOR KIT	1	
2	3376100730	RUBBER ISOLATOR	4	
8	0291111200	LOCK NUT	32	
21	0147140403	SCREW, HEX HEAD	32	
26	0301235800	FLAT WASHER	32	
KIT	3376100997	SEAL KIT (ROTATOR)	1	
KIT	3316000308	DRAINLINE KIT HC 850 R	1	
53		BULKHEAD UNION	1	
55		ADAPTER GE8L	1	
56		HYDRAULIC HOSE	1	
57		ADAPTER GE10 LR	1	
58		HYDRAULIC HOSE	1	
KIT	3316000307	DRAINLINE KIT HC 850	1	A
53		BULKHEAD UNION	1	
54		HYDRAULIC HOSE	1	
55		ADAPTER GE8L	1	

Comments for Page: Kit list

A I for HC's without rotation

Mechanical Hydraulic compactor HC 850 non rotating



Refer to the DocMine web page for most up-to-date information. The printed information might be outdated.

Fri Jun 07 05:11:42 UTC 2024

Item	Part No.	Name	Qty	L
1	3316000036	VENT VALVE	1	
2	3316000075	CONTROL VALVE BLOCK	1	
3	3316000104	OUTER HOUSING	1	
4	3376692004	ROTOR	1	
6	3316000162	ROTOR HOUSING	1	
8	3376100730	RUBBER ISOLATOR	4	
10	3376698403	TAMPER PLATE	1	A
11	0291111800	LOCK NUT	6	
12	0291111200	LOCK NUT	32	
13	0686612800	PLUG	1	
14	3376698013	BEARING RETAINER	2	
15	3376698012	BEARING COVER	1	
16	3363123130	BEARING COVER	1	
19	3376698143	AXLE	2	B
20	3315019510	LOCK WASHER	2	
21	0333217422	SPRING WASHER	8	
22	0147163603	SCREW, HEX HEAD	6	
23	0301233500	PLAIN WASHER	4	
24	0300012949	PLAIN WASHER	2	
25	0686371626	PLUG	1	
26	0147145003	SCREW, HEX HEAD	8	
27	0147140403	SCREW, HEX HEAD	32	
28	0291112832	LOCK NUT	2	
29	0147134003	SCREW	2	
30	0211147800	SCREW	2	
31	0301240500	PLAIN WASHER	6	
32	0301235800	FLAT WASHER	32	
33	3316000110	HYDRAULIC HOSE	1	
34	3316000111	HYDRAULIC HOSE	1	
35	3316000084	HYDRAULIC MOTOR	1	
36	5750533127	O-RING	2	
37	0663211340	O-RING	2	
38	3363123133	O-RING	1	
39	0506010024	BEARING	2	
40	3316000202	90° ELBOW ADAPTER	1	
41	3377016375	SEAL-RING - Bounded seal - Oil outlet 3/8 USS	1	
42	0580001476	PIPE COUPLING	1	

Refer to the DocMine web page for most up-to-date information. The printed information might be outdated.

Fri Jun 07 05:11:42 UTC 2024

Item	Part No.	Name	Qty	L
43	3316000116	ELBOW	1	
44	3315439101	HATCON LABEL	1	
45	3315439145	PROTECTIVE PLUG HATCON	4	
46	0291112818	LOCK NUT	2	
48	3316000118	TEE ADAPTER	1	
49	6060008101	SEAL WASHER	1	
50	3315280800	VALVE RUBBER	1	
51	3316000203	45° ELBOW ADAPTER G1"-M36 S25	1	
52	0686925030	CAP	2	
53		BULKHEAD UNION	1	C
54		HYDRAULIC HOSE	1	C
55		ADAPTER GE8L	1	C

Comments for Page: Hydraulic compactor HC 850 non rotating

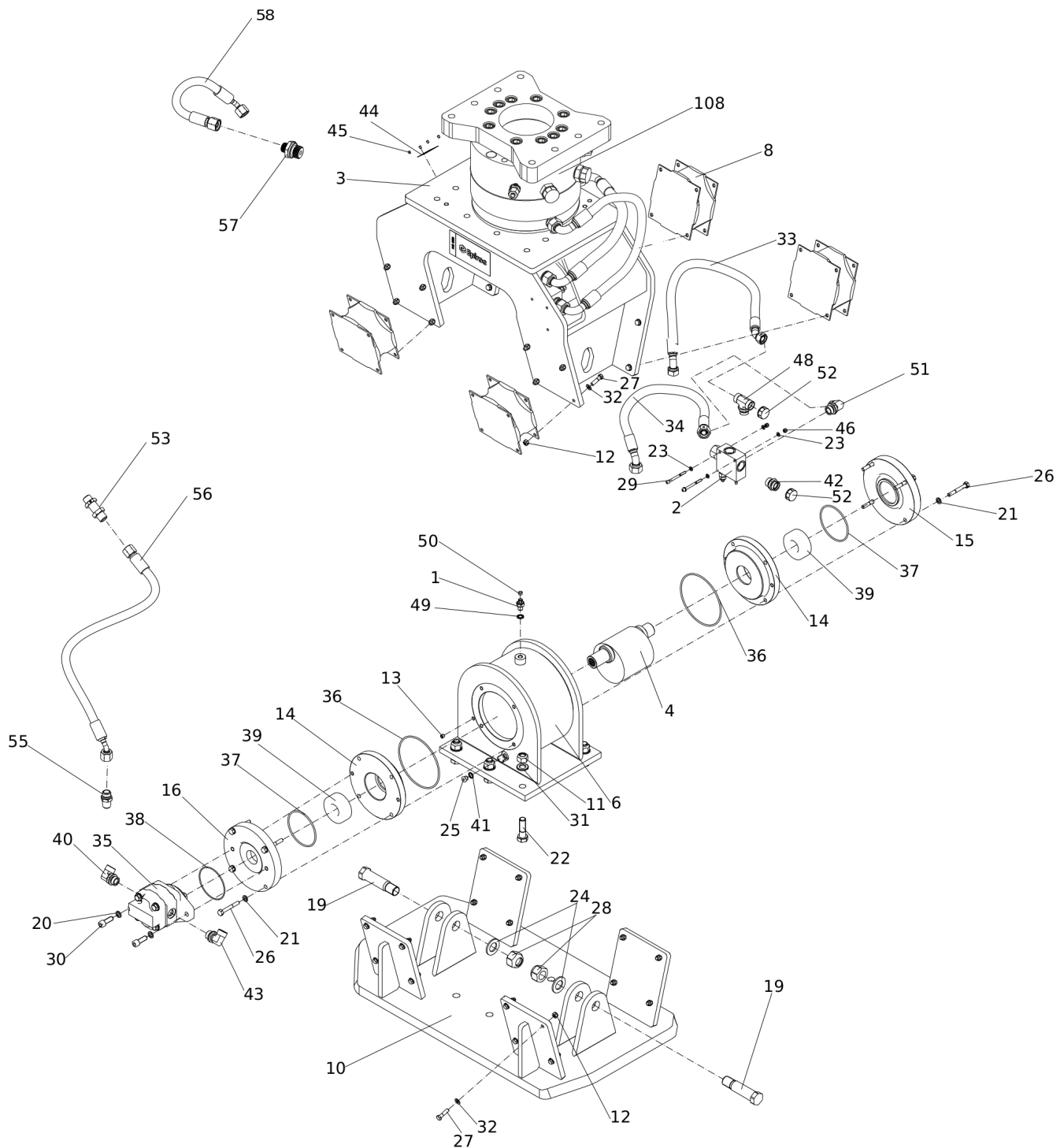
A | with items 22, 24 and 36

B | with items 16 and 27

C | part of drainline kit HC 850 non rotating (see page service, repair and wear part kits)

This page intentionally left blank

Mechanical Hydraulic compactor HC 850 rotating



Refer to the DocMine web page for most up-to-date information. The printed information might be outdated.

Fri Jun 07 05:11:43 UTC 2024

Item	Part No.	Name	Qty	L
1	3316000036	VENT VALVE	1	
2	3316000075	CONTROL VALVE BLOCK	1	
3	3316000104	OUTER HOUSING	1	
4	3376692004	ROTOR	1	
6	3316000162	ROTOR HOUSING	1	
8	3376100730	RUBBER ISOLATOR	4	
10	3376698403	TAMPER PLATE	1	A
11	0291111800	LOCK NUT	6	
12	0291111200	LOCK NUT	32	
13	0686612800	PLUG	1	
14	3376698013	BEARING RETAINER	2	
15	3376698012	BEARING COVER	1	
16	3363123130	BEARING COVER	1	
19	3376698143	AXLE	2	B
20	3315019510	LOCK WASHER	2	
21	0333217422	SPRING WASHER	8	
22	0147163603	SCREW, HEX HEAD	6	
23	0301233500	PLAIN WASHER	4	
24	0300012949	PLAIN WASHER	2	
25	0686371626	PLUG	1	
26	0147145003	SCREW, HEX HEAD	8	
27	0147140403	SCREW, HEX HEAD	32	
28	0291112832	LOCK NUT	2	
29	0147134003	SCREW	2	
30	0211147800	SCREW	2	
31	0301240500	PLAIN WASHER	6	
32	0301235800	FLAT WASHER	32	
33	3316000110	HYDRAULIC HOSE	1	
34	3316000111	HYDRAULIC HOSE	1	
35	3316000084	HYDRAULIC MOTOR	1	
36	5750533127	O-RING	2	
37	0663211340	O-RING	2	
38	3363123133	O-RING	1	
39	0506010024	BEARING	2	
40	3316000202	90° ELBOW ADAPTER	1	
41	3377016375	SEAL-RING - Bounded seal - Oil outlet 3/8 USS	1	
42	0580001476	PIPE COUPLING	1	

Refer to the DocMine web page for most up-to-date information. The printed information might be outdated.

Fri Jun 07 05:11:43 UTC 2024

Item	Part No.	Name	Qty	L
43	3316000116	ELBOW	1	
44	3315439101	HATCON LABEL	1	
45	3315439145	PROTECTIVE PLUG HATCON	4	
46	0291112818	LOCK NUT	2	
48	3316000118	TEE ADAPTER	1	
49	6060008101	SEAL WASHER	1	
50	3315280800	VALVE RUBBER	1	
51	3316000203	45° ELBOW ADAPTER G1"-M36 S25	1	
52	0686925030	CAP	2	
53		BULKHEAD UNION	1	C
55		ADAPTER GE8L	1	C
56		HYDRAULIC HOSE	1	C
57		ADAPTER GE10 LR	1	C
58		HYDRAULIC HOSE	1	C
108	3376100987	ROTATION UNIT	1	

Comments for Page: Hydraulic compactor HC 850 rotating

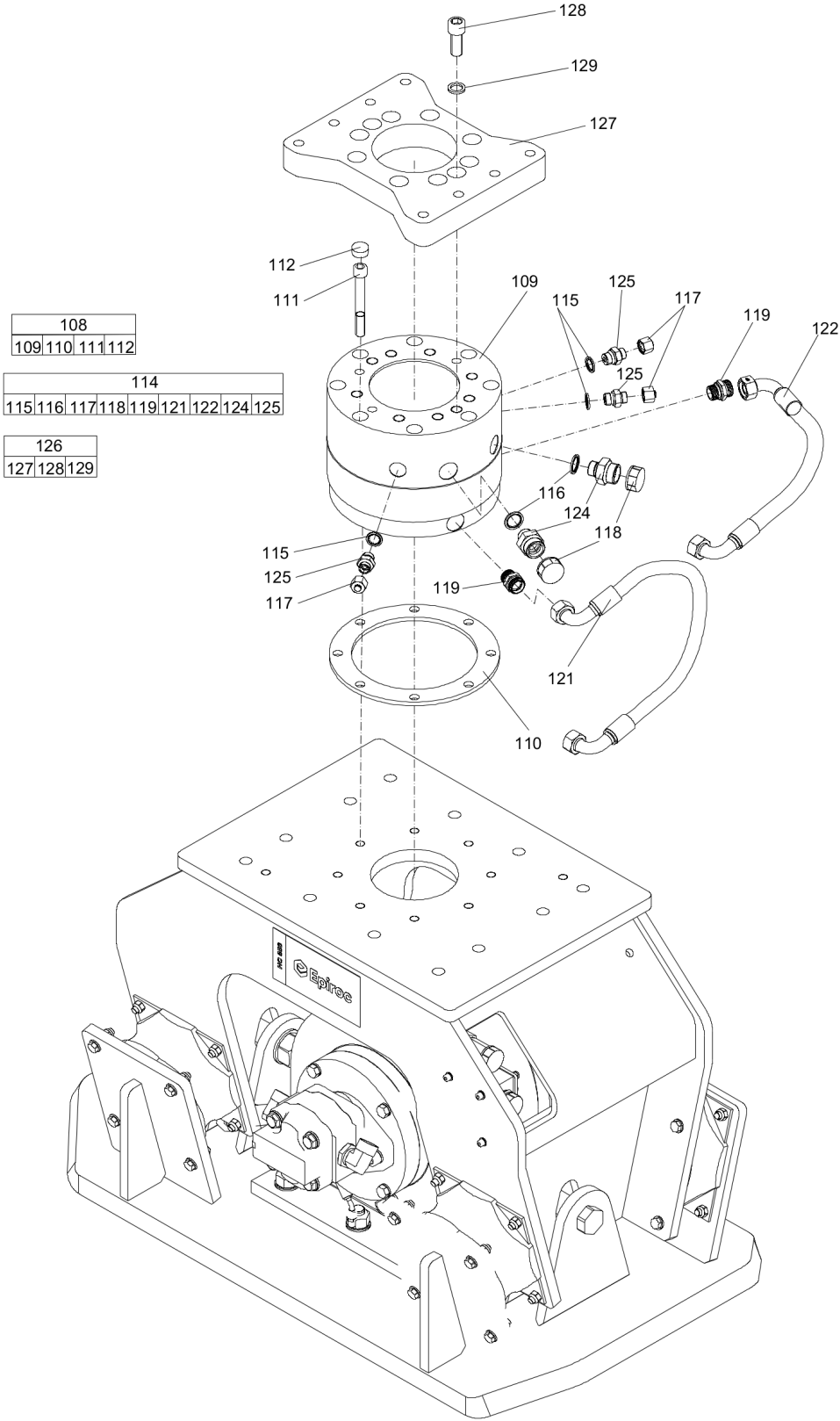
A | with items 22, 24 and 36

B | with items 16 and 27

C | part of drainline kit HC 850 R (see page service, repair and wear part kits)

This page intentionally left blank

Mechanical Rotation unit



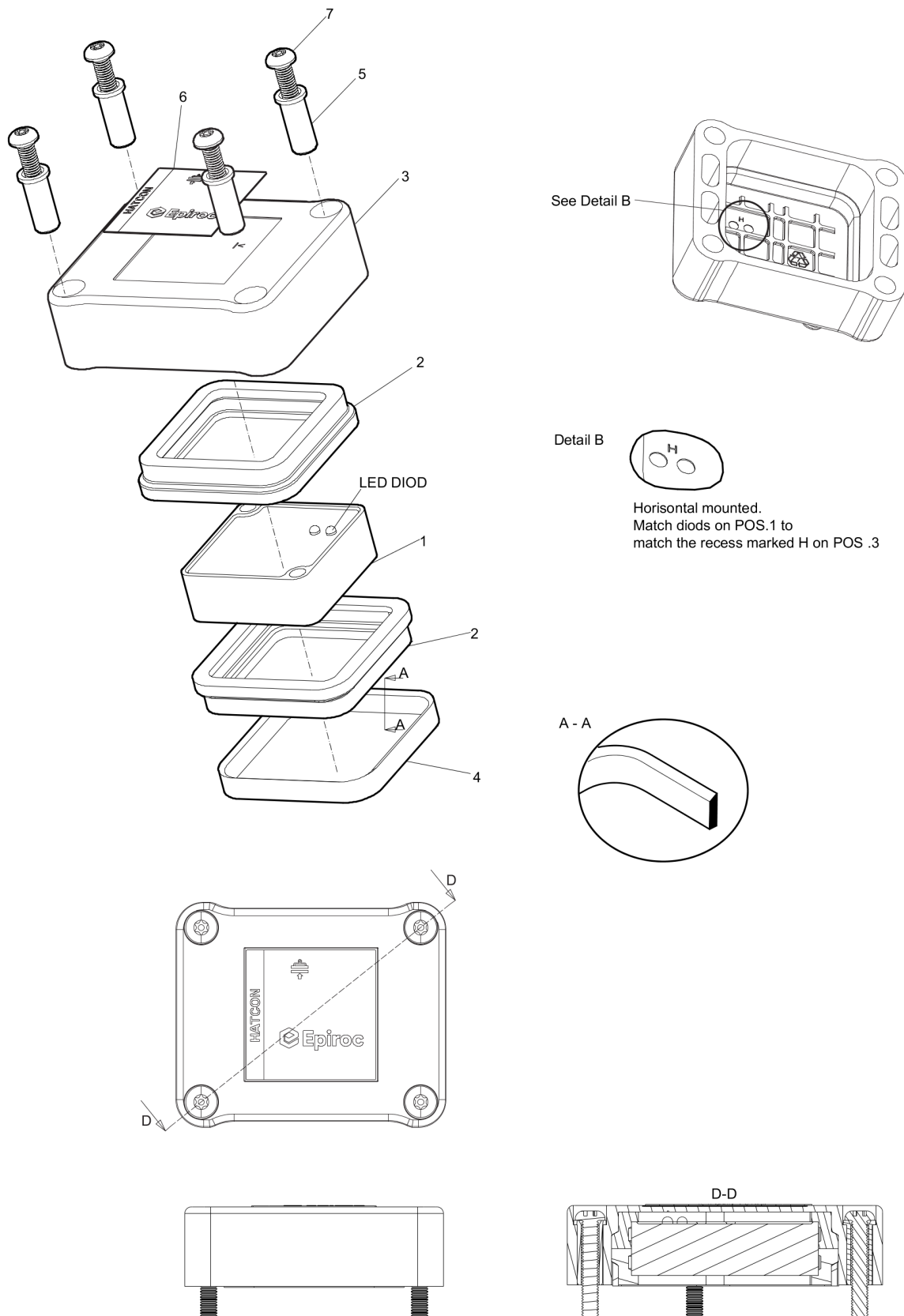
Item	Part No.	Name	Qty	L
108(109-112)	3376100987	ROTATION UNIT	1	
109		ROTATOR	1	
110		SPACER	1	
111		HEXAGON SOCKET SCREW	8	
112		PLUG	8	
114(115-125)	3316000259	HOSE/FITTING KIT HC 850	1	
115		SEAL WASHER 21.54x28.58x2.47	3	
116		SEAL WASHER 27.05x34.93x2.47	2	
117		PLUG	3	
118		CAP	2	
119		PIPE COUPLING	2	
121		HYDRAULIC HOSE (P)	1	
122		HYDRAULIC HOSE (P)	1	
124		FITTING	2	
125		FITTING	3	
126(127-129)	3363115683	SANDWICH PLATE COMPLETE	1	
127		SANDWICH PLATE	1	
128	3360026782	ALLEN SCREW	10	
129	3361850748	PAIR OF LOCK WASHERS	10	

Mechanical Tightening torques

NO EXPLODED VIEW
AVAILABLE
FOR THIS BOM

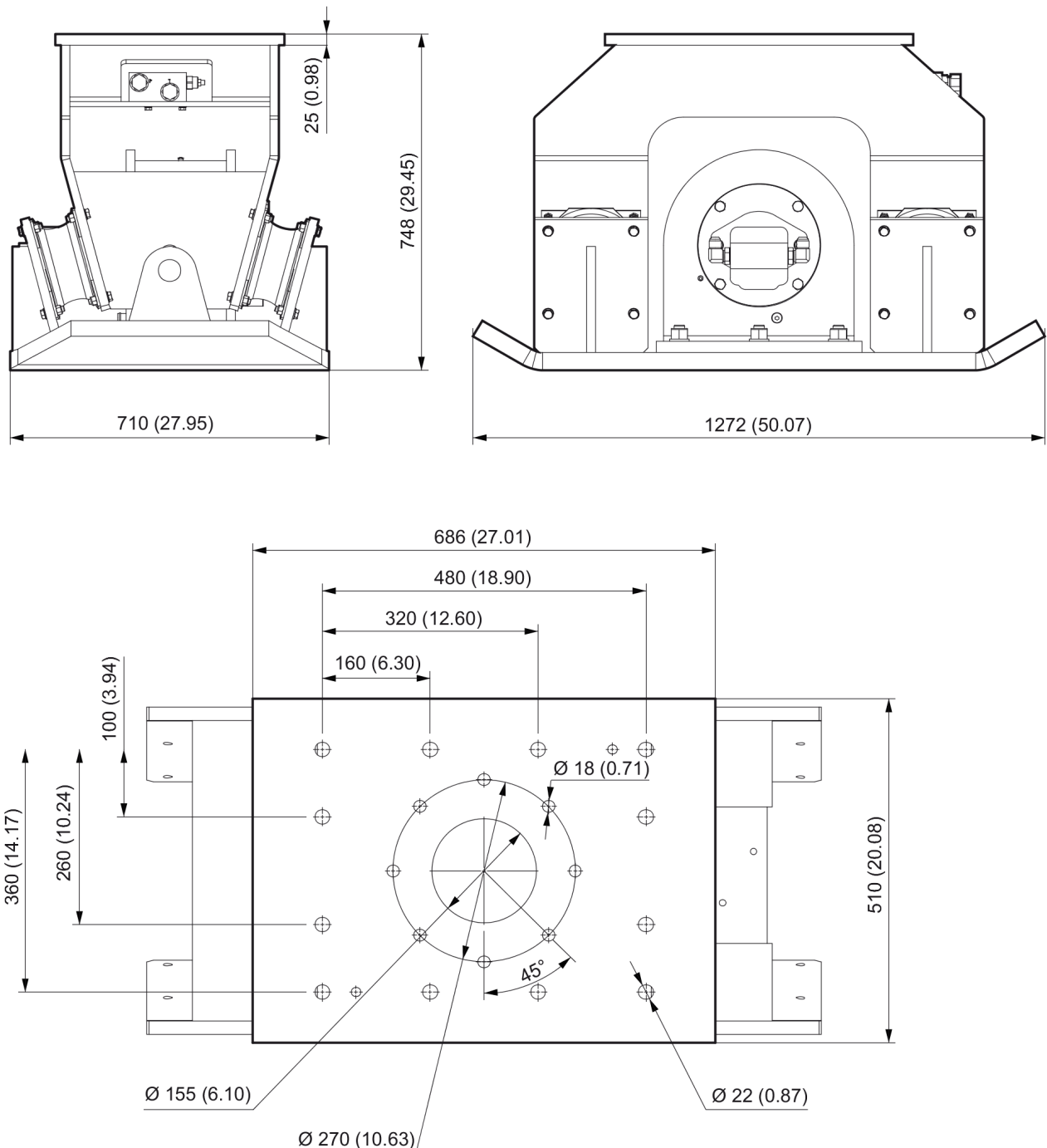
Item	Part No.	Name	Qty	L
1	-	OPEN-ENDED WRENCH - pretighten finger tight, then 1 - 2 turns tighten with the open-ended wrench	-	
8	-	OPEN-ENDED WRENCH - 329 Nm (243 ft lbf)	-	
9	-	ALLEN KEY - pretighten finger tight, then 1 - 2 turns tighten with the Allen key	-	
19	-	ALLEN KEY - 30.5 Nm (22.5 ft lbf)	-	
20	-	OPEN-ENDED WRENCH - 148 Nm (109 ft lbf)	-	
21	-	OPEN-ENDED WRENCH - 329 Nm (243 ft lbf)	-	
22	-	OPEN-ENDED WRENCH - 798 Nm (589 ft lbf)	-	
23	-	OPEN-ENDED WRENCH - 20 Nm (15 ft lbf)	-	
24	-	OPEN-ENDED WRENCH - 798 Nm (589 ft lbf)	-	
31	-	OPEN-ENDED WRENCH - 230 Nm (170 ft lbf)	-	

Mechanical HATCON (Horizontal)



Item	Part No.	Name	Qty	L
1		TRACKING MODULE HATCON	1	
2	3315439130	DAMPER HATCON	2	
3	3315439110	HOUSING TYPE 1 HATCON	1	
4	3315439140	LOCK RING HATCON	1	
5	3315439120	SLEEVE HATCON	4	
6	3315439100	PRODUCT LABEL HATCON	1	
7	3315442600	SCREW HATCON	4	

Mechanical Dimensions HC 850 non rotating

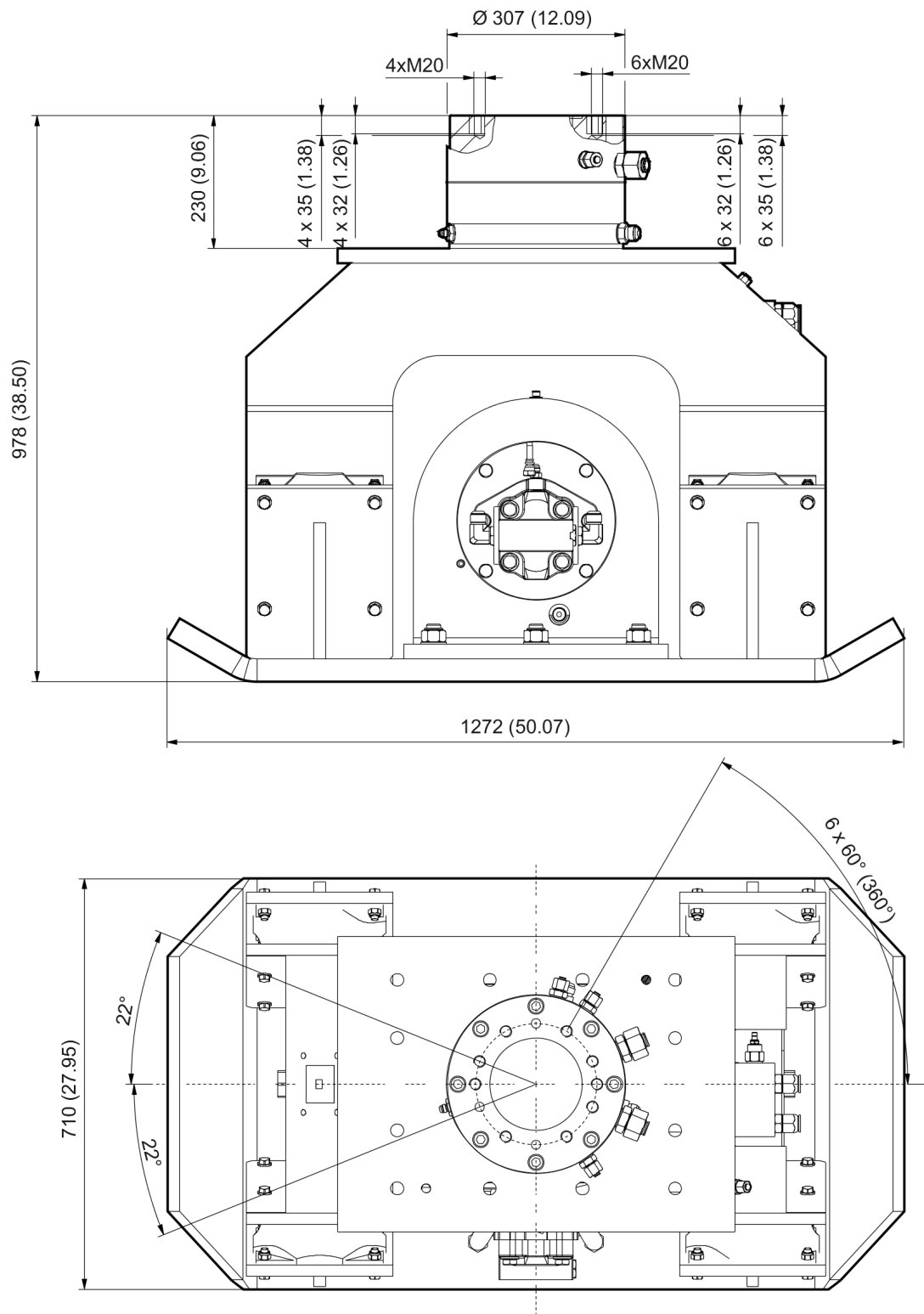


Refer to the DocMine web page for most up-to-date information. The printed information might be outdated.

Fri Jun 07 05:11:45 UTC 2024

This page intentionally left blank

Mechanical Dimensions HC 850 rotating



Refer to the DocMine web page for most up-to-date information. The printed information might be outdated.

Fri Jun 07 05:11:45 UTC 2024

This page intentionally left blank

Options / accessories Hydraulic hoses

NO EXPLODED VIEW
AVAILABLE
FOR THIS BOM

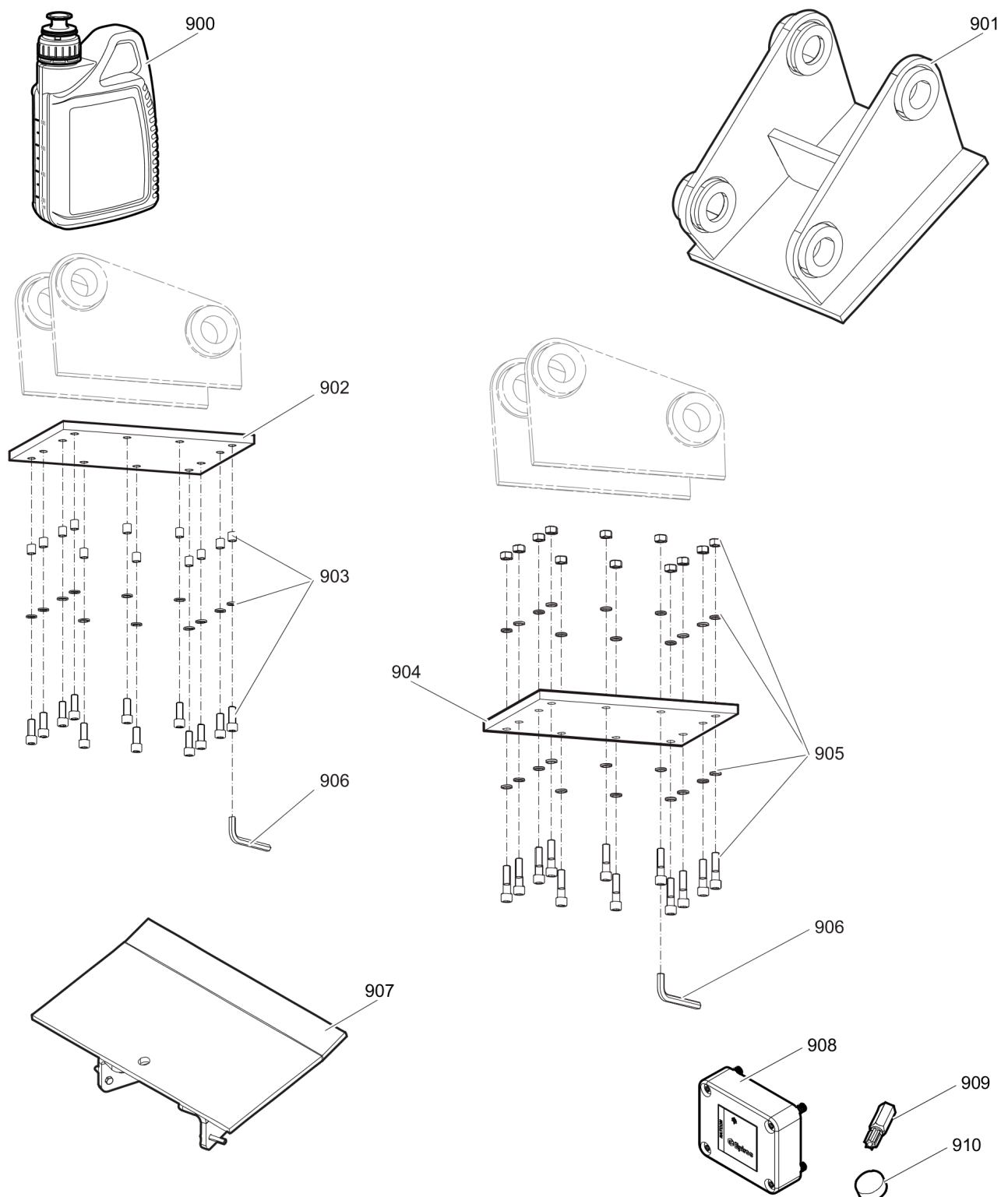
Item	Part No.	Name	Qty	L
	-	PRESSURE LINE / TANK LINE Rotation		
-	3360332294	HYDRAULIC HOSE, I.D. 20 (0.79 in.), both ends M36 x 2 mm conical seal 24°, length 2,300 mm (90.5 in.)	2	
-	3363085947	HYDRAULIC HOSE, I.D. 20 (0.79 in.), both ends M36 x 2 mm conical seal 24°, length 2,800 mm (110.2 in.)	2	
	-	PRESSURE LINE / TANK LINE Non rotation		
-	3360332294	HYDRAULIC HOSE, I.D. 20 (0.79 in.), both ends M36 x 2 mm conical seal 24°, length 2,300 mm (90.5 in.)	1	
-	3316000248	HYDRAULIC HOSE 2300 mm 25S/28L	1	B
-	3363085947	HYDRAULIC HOSE, I.D. 20 (0.79 in.), both ends M36 x 2 mm conical seal 24°, length 2,800 mm (110.2 in.)	1	
-	3316000249	HYDRAULIC HOSE 2800 mm 25S/28L	1	B
	-	ACCESSORIES TO THE HYDRAULIC HOSES		
-	3316000251	ADAPTER JIC (DIN 28L to JIC #16)	1	A
-	3316000252	FITTING JIC 1 5/16 x G1" ED	1	A
	-	DRAINAGE FOR HYDRAULIC MOTOR		
-	3363119625	HYDRAULIC HOSE, I.D. 8 (3/8"), M20 x 1.5 conical seal 24° - 9/16-18 JIC, length 2800 mm (110 in.)	1	

Comments for Page: Hydraulic hoses

A | Remove the genuine fittings carrier side from the valve block before mounting the fitting set.

B | T-Line

Options / accessories Optional equipment part 1



Refer to the DocMine web page for most up-to-date information. The printed information might be outdated.

Fri Jun 07 05:11:46 UTC 2024

Item	Part No.	Name	Qty	L
900		COMPACTOR OIL	1	A
901		ADAPTER PLATE matching the carrier. Consult the authorized Customer Center/Dealer in your area.	1	
902	3363099797	BASE PLATE WITH THREADED INSERTS	1	
903	3363094537	BOLT KIT	1	
904	3363100695	BASE PLATE WITH THROUGH BORINGS	1	
905	3363094574	BOLT KIT	1	
906	3360209253	ALLEN KEY (19 mm)	1	
907	3376698108	BACKFILL BLADE KIT	1	
908	3315442500	HATCON KIT 1 (3G)	1	
909	3315439105	SECURITY BIT HATCON	1	
910	3315439106	MAGNET HATCON	1	

Comments for Page: Optional equipment part 1

A | Oil specification

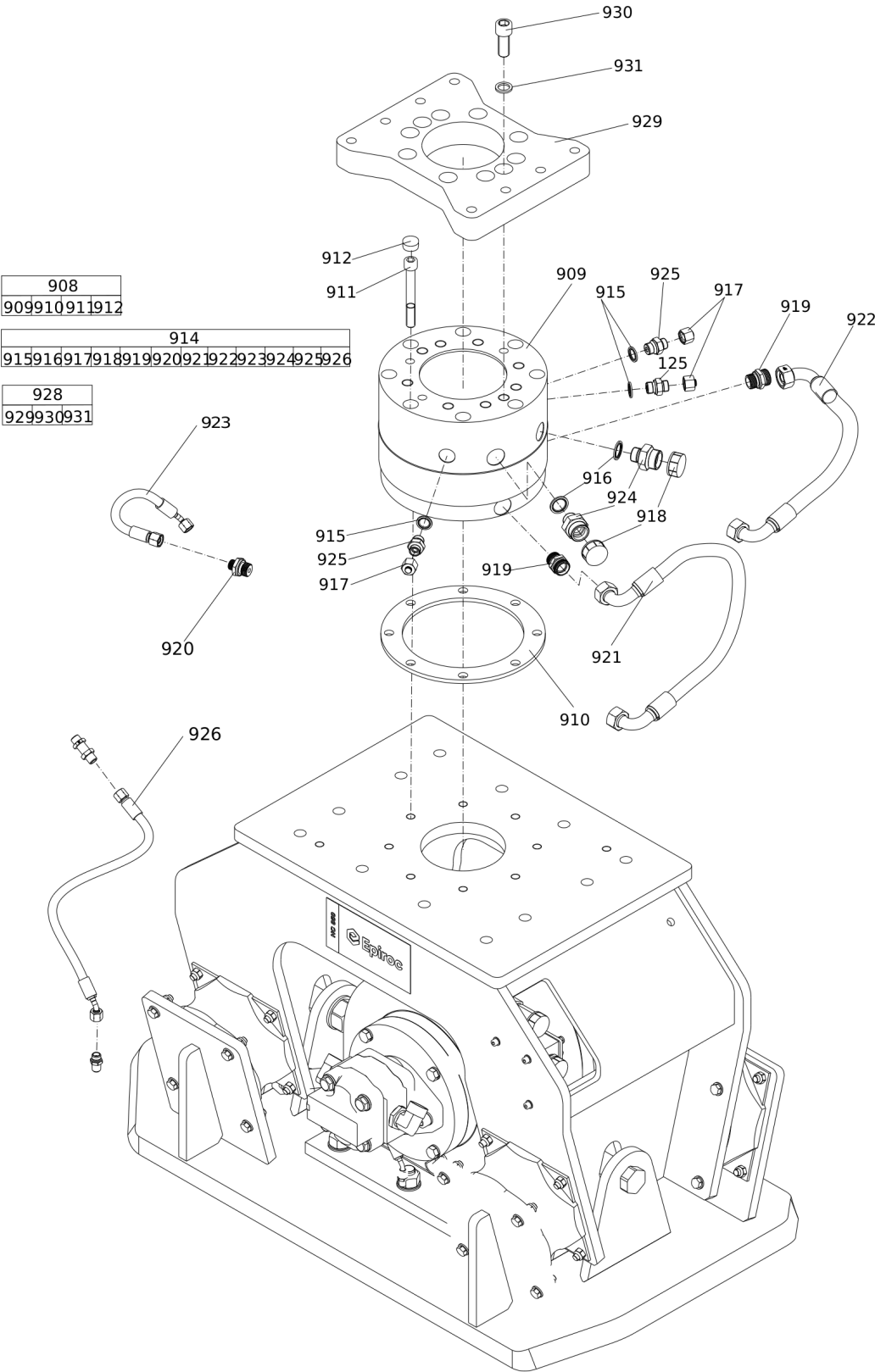
Application: Engine oil

Type: Mineral oil

Viscosity: SAE 15W-40

API Service Classification: CI-4

Options / accessories Optional equipment part 2



Item	Part No.	Name	Qty	L
907(908-926)	3316000250	ROTATION KIT HC 850	1	
908(909-912)	3376100987	ROTATION UNIT	1	
909	3372100062	ROTATOR	1	
910		SPACER	1	
911		HEXAGON SOCKET SCREW	8	
912		PLUG	8	
914(915-926)	3316000259	HOSE/FITTING KIT HC 850	1	
915		SEAL WASHER 21.54x28.58x2.47	3	
916		SEAL WASHER 27.05x34.93x2.47	2	
917		PLUG	3	
918		CAP	2	
919		PIPE COUPLING	2	
920		ADAPTER GE8L	1	
921		HYDRAULIC HOSE (P)	1	
922		HYDRAULIC HOSE (T)	1	
923		HYDRAULIC HOSE	1	
924		FITTING	2	
925		FITTING	3	
926		HYDRAULIC HOSE	1	A
928(929-931)	3363115678	SANDWICH PLATE COMPLETE	1	
929		SANDWICH PLATE	1	
930	3360026782	ALLEN SCREW	10	
931	3361850748	PAIR OF LOCK WASHERS	10	

Comments for Page: Optional equipment part 2

A I hose pos. no. 926 replaces the hose which is originally mounted in HC 850 without rotation unit

Any unauthorized use or copying of the contents or any part thereof is prohibited.
This applies in particular to trademarks, model denominations, part numbers, and drawings.