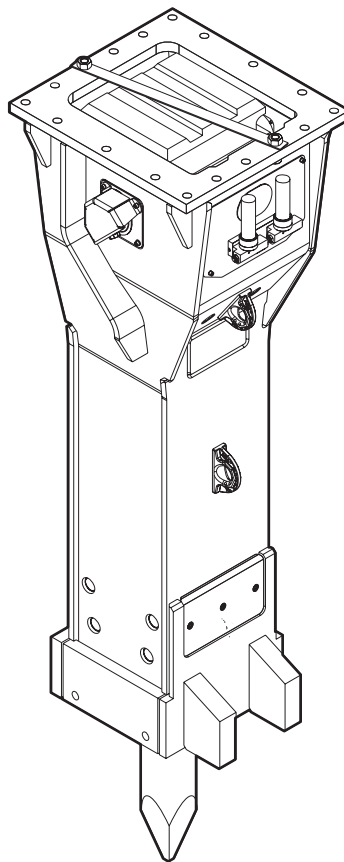


HB 10000 DP

Spare parts list Hydraulic breakers

HB 10000 DP s/n DEQ220482 -



General information

This spare parts list applies to the following:

Part number	Description
3363120937	Hydraulic breaker HB 10000 DP with lower wear bush (steel)
3363121279	Hydraulic breaker HB 10000 DP with lower wear bush (bronze)
3363124806	Hydraulic breaker HB 10000 DP with lower wear bush (steel) with HATCON (3G)
3363124807	Hydraulic breaker HB 10000 DP with lower wear bush (bronze) with HATCON (3G)
3363126888	Hydraulic breaker HB 10000 DP with lower wear bush (steel) with HATCON (LTE)
3363126889	Hydraulic breaker HB 10000 DP with lower wear bush (bronze) with HATCON (LTE)

Use only authorized parts. Any damage or malfunction caused by the use of unauthorized parts is not covered by Warranty or Product Liability. Any unauthorized use or copying of the contents or any part thereof is prohibited. This applies in particular to trademarks, model denominations, part numbers, and drawings.

Instructions for use

This spare parts list contains no safety regulations and is merely intended to assist in the ordering of spare parts.

For information about operating, servicing, or repairing, the relevant Safety and operating instructions must be consulted at all costs.

Please observe the safety instructions listed in the relevant Safety and operating instructions!

Instructions for ordering

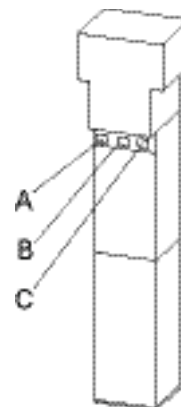
It is essential to indicate the serial number of the hydraulic attachment when ordering spare parts!

Please note the full identification number of your hydraulic attachment.

The code can be found on the cylinder.

Determine the quantity of individual parts which are required and need to be ordered. The order must indicate the following details:

- full identification code of the hydraulic attachment
- required quantity
- part number
- description



- A. Cylinder number
- B. Type
- C. Serial number

Service, repair and wear part kits

Label kit	1
Seal kit	3
Plastic parts kit	5
Tensioning bolt kit	7
DustProtector kit	9
Noise protection kit	11
Lower breaker part kit (bronze)	13
Lower breaker part kit (steel)	15
Fastening screw kit	17
Accumulator repair kit	19

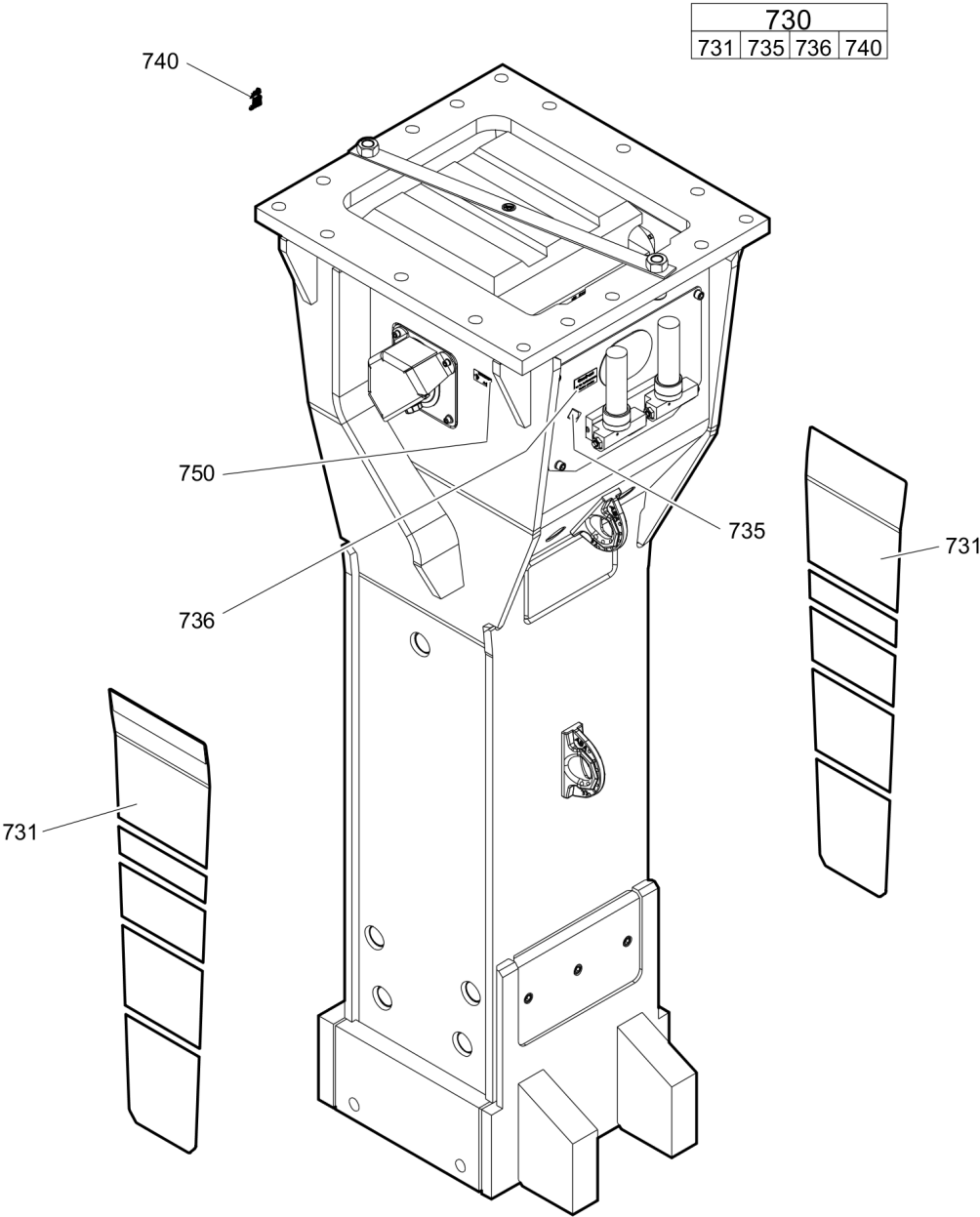
Mechanical

Hydraulic breaker	21
Percussion unit part 1: cylinder cover	24
Percussion unit part 2: cylinder	28
Percussion unit part 3: lower breaker part (steel)	31
Percussion unit part 3: lower breaker part (bronze)	33
Connecting kit for automatic lubrication system	35
HATCON	37
Optional parts	39
Tightening torques	41
Dimensions	44

Options / accessories

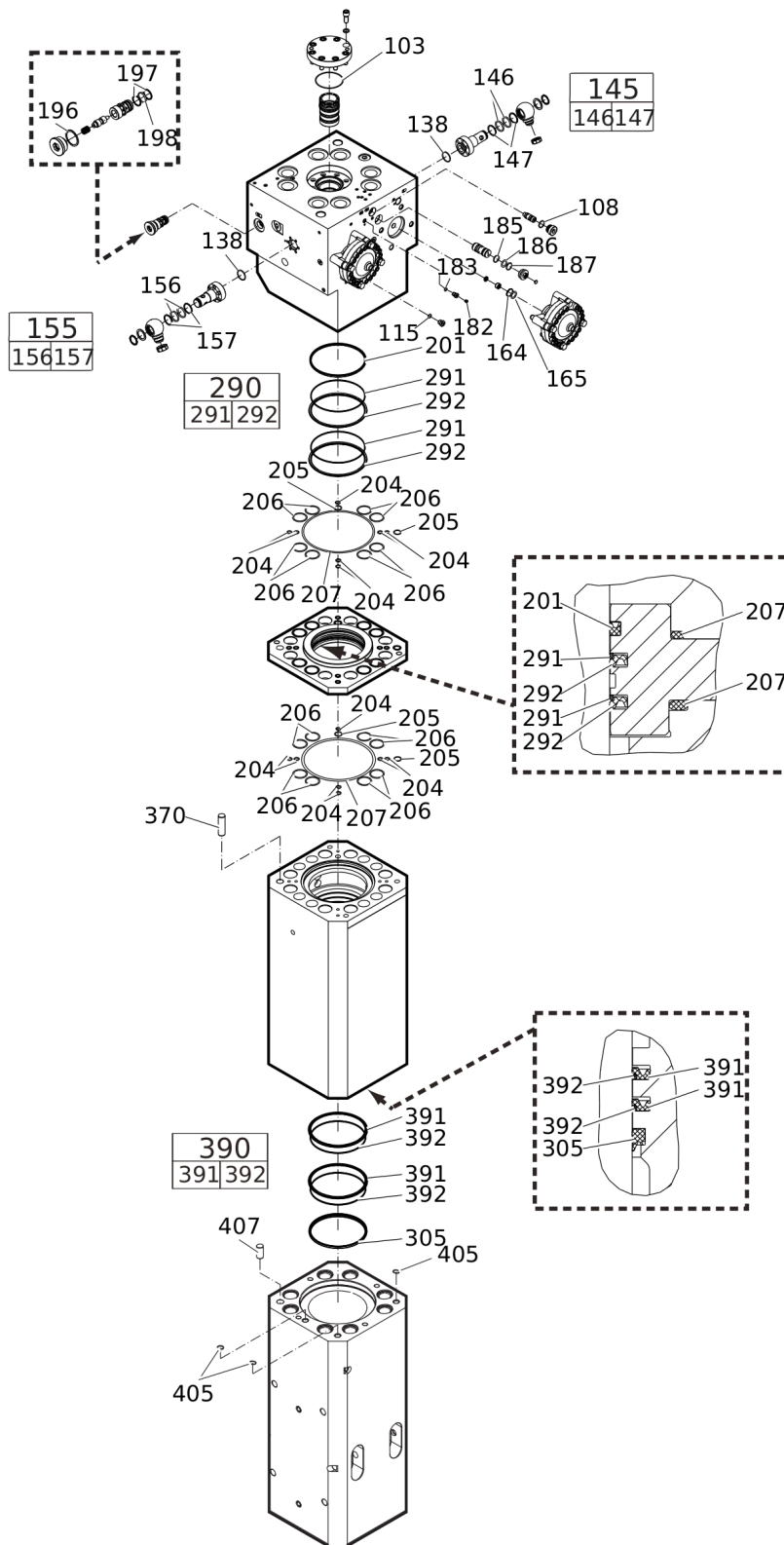
Hydraulic hoses	46
Optional equipment	49
Working tools ClassicLine	51
Working tools ProLine	53

Service, repair and wear part kits Label kit



Item	Part No.	Name	Qty	L
730(730-740)	3363121381	Label kit HB 10000 DP	1	
731		Label "HB 10000 DP Epiroc"	2	
735		LABEL - LUBRICATING SYMBOL	1	
736		GAS PRESSURE LABEL	2	
740		Sound power label	1	
750		NAME PLATE - Consult the authorized Customer Center/Dealer in your area.	1	

Service, repair and wear part kits Seal kit

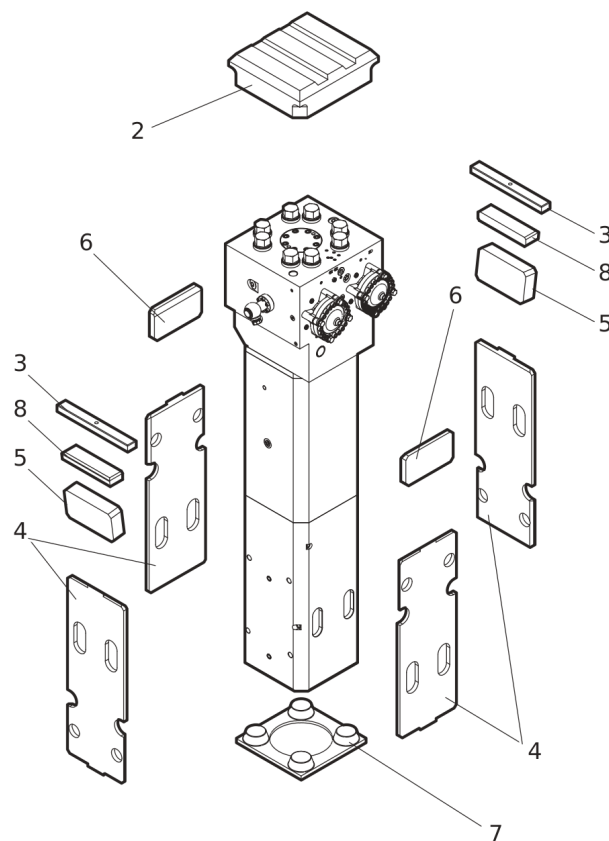


Item	Part No.	Name	Qty	L
KIT	3363121226	Seal kit	1	
103	3360478291	O-ring	1	
108	3360314370	O-RING	1	
115	3360478171	O-RING	1	
138	3360314373	O-RING	2	
164	3360314364	O-RING	2	
165	3360328046	BACK-UP RING	2	
145(146-147)	3361850422	SEAL KIT	1	
146		O-RING	2	
147		BACK-UP RING	2	
155(156-157)	3361850422	SEAL KIT	1	
156	3361846282	O-RING	2	
157	3361846281	BACK-UP RING	2	
182	3360478426	THREADED PLUG	1	
183	3360175125	O-RING	1	
185	3363123253	SEAL	1	
186	3360314790	O-RING	1	
187	3363126739	BACK-UP RING	1	
196	3363121175	SEAL	1	
197	3363121176	BACK-UP RING	2	
198	3360314453	O-RING	1	
201	3363103420	Seal	1	
204	3363124052	Seal	14	
205	3363124053	Seal	4	
206	3363124054	Seal	16	
207	3363094978	O-ring	2	
290(291-292)	3363098324	Seal kit	2	
291		Back-up ring	1	
292		Seal	1	
305	3363094974	Wiper	1	
370	3360106819	LOCK PIN	1	
390(391-392)	3363098325	Seal kit	2	
391		Seal	1	
392		Back-up ring	1	
405	3360314453	O-RING	3	
407	3360106818	LOCK PIN	1	

Refer to the DocMine web page for most up-to-date information. The printed information might be outdated.

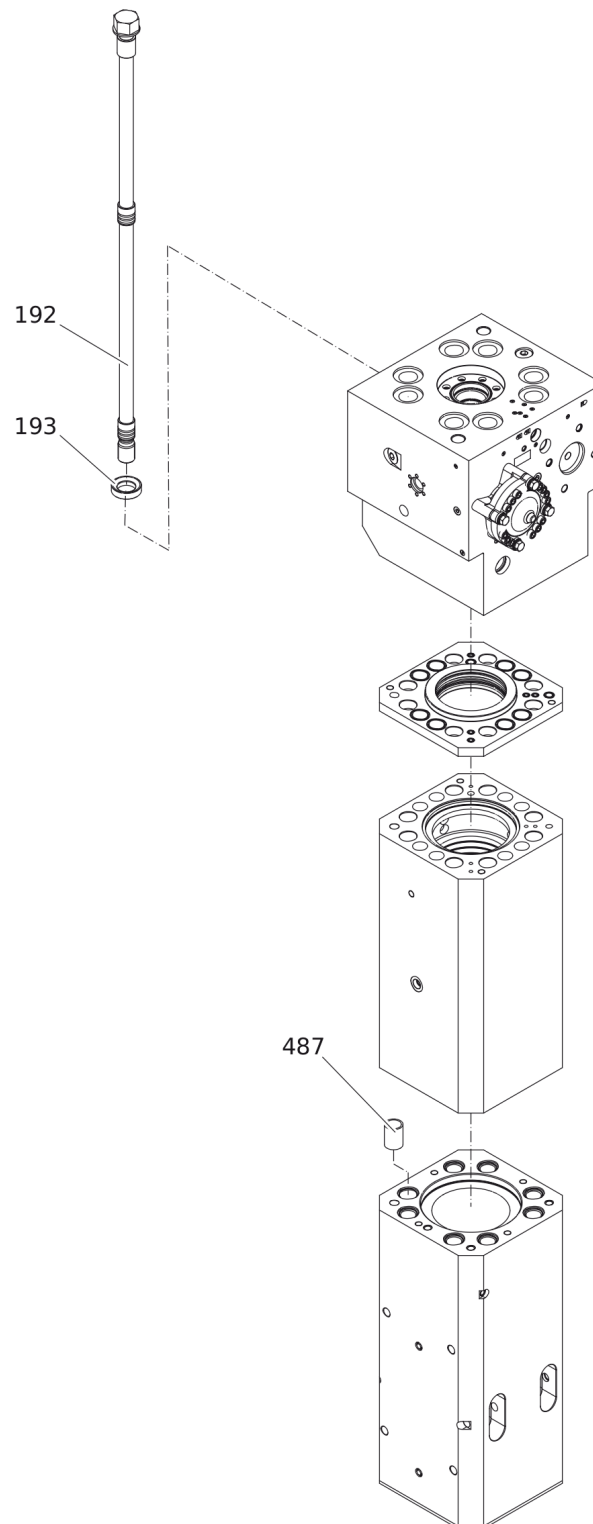
Wed Feb 07 10:53:00 UTC 2024

Service, repair and wear part kits Plastic parts kit



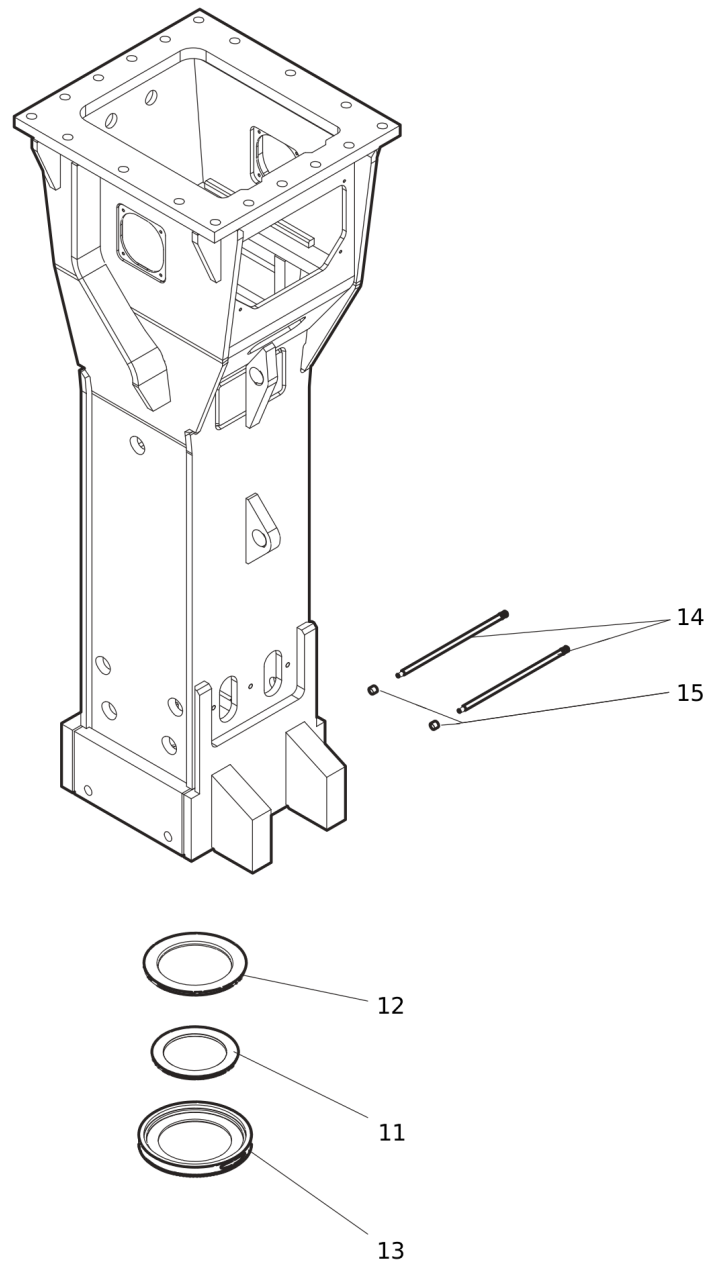
Item	Part No.	Name	Qty	L
KIT	3363094823	Plastic parts kit	1	
2	3363092957	Elastic pad	1	
3	3363093853	Shock absorber	2	
4	3363093855	Guide plate	4	
5	3362262667	GUIDE PLATE	2	
6	3362262665	GUIDE PLATE	2	
7	3363100713	Guide plate	1	
8	3363100777	Plate	2	

Service, repair and wear part kits Tensioning bolt kit



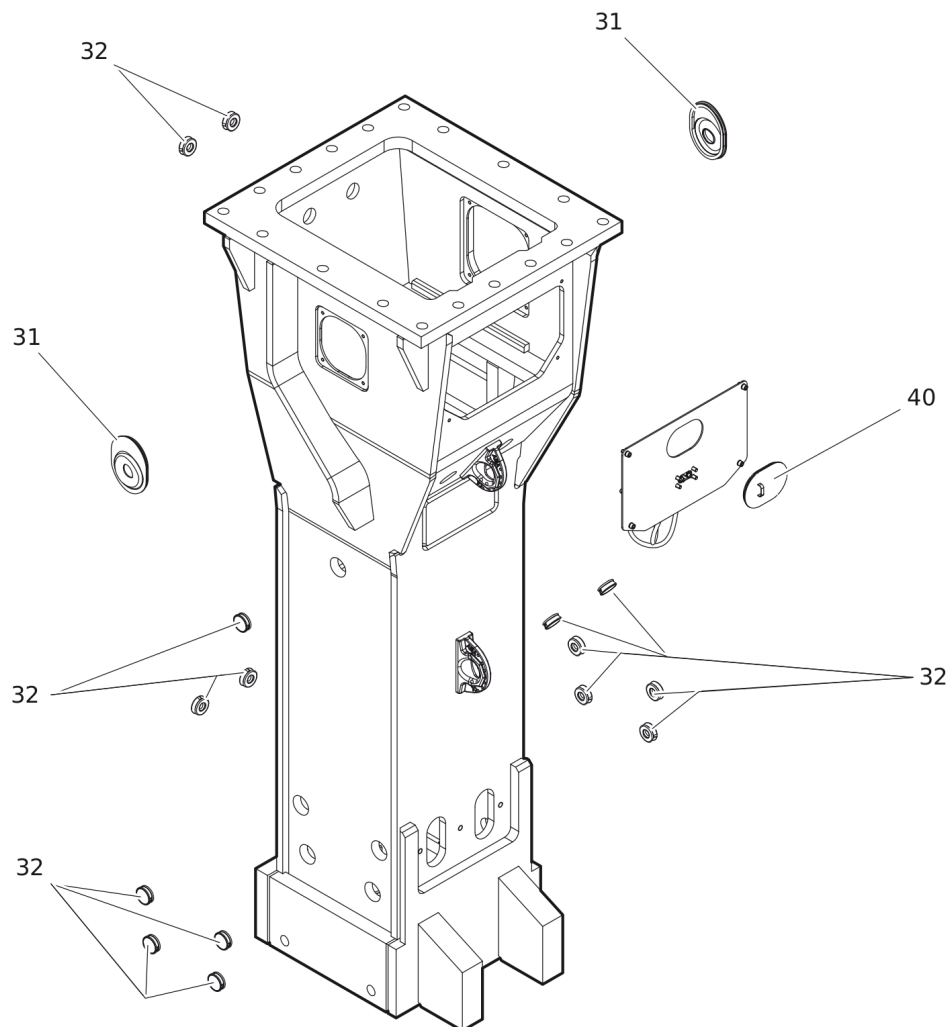
Item	Part No.	Name	Qty	L
KIT	3363098329	Tensioning bolt kit	1	
192		Tensioning bolt	4	
193	3363093653	Washer	4	
487	3363085321	Threaded insert	4	

Service, repair and wear part kits DustProtector kit



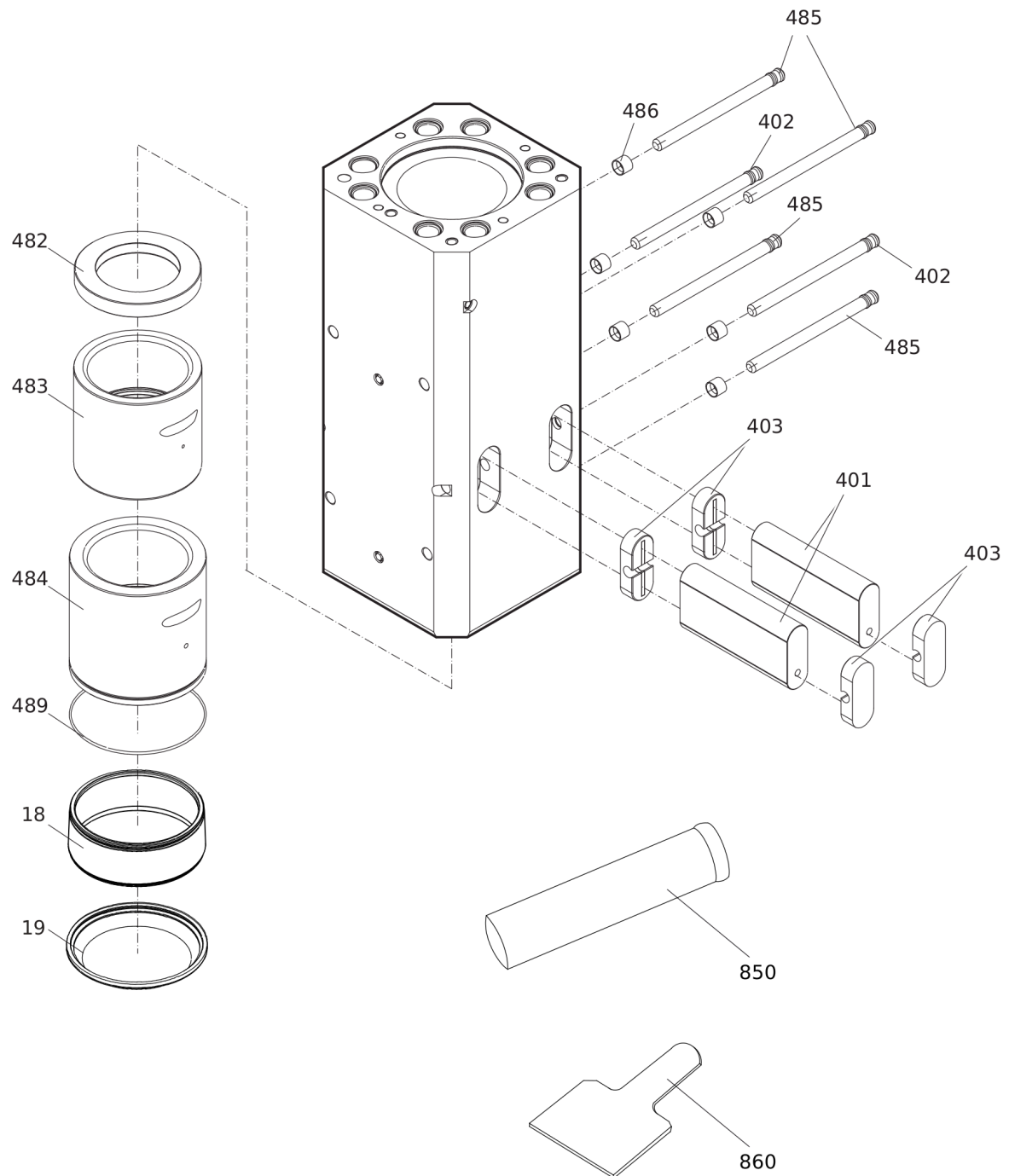
Item	Part No.	Name	Qty	L
KIT	3363098330	DustProtector kit	1	
11	3363100701	Floating ring (tribolid)	1	
12	3363100703	Counter ring	1	
13	3363100705	Guide ring	1	
14	3363100707	Bolt	2	
15	3361854363	LOCKING BUSH	2	

Service, repair and wear part kits Noise protection kit



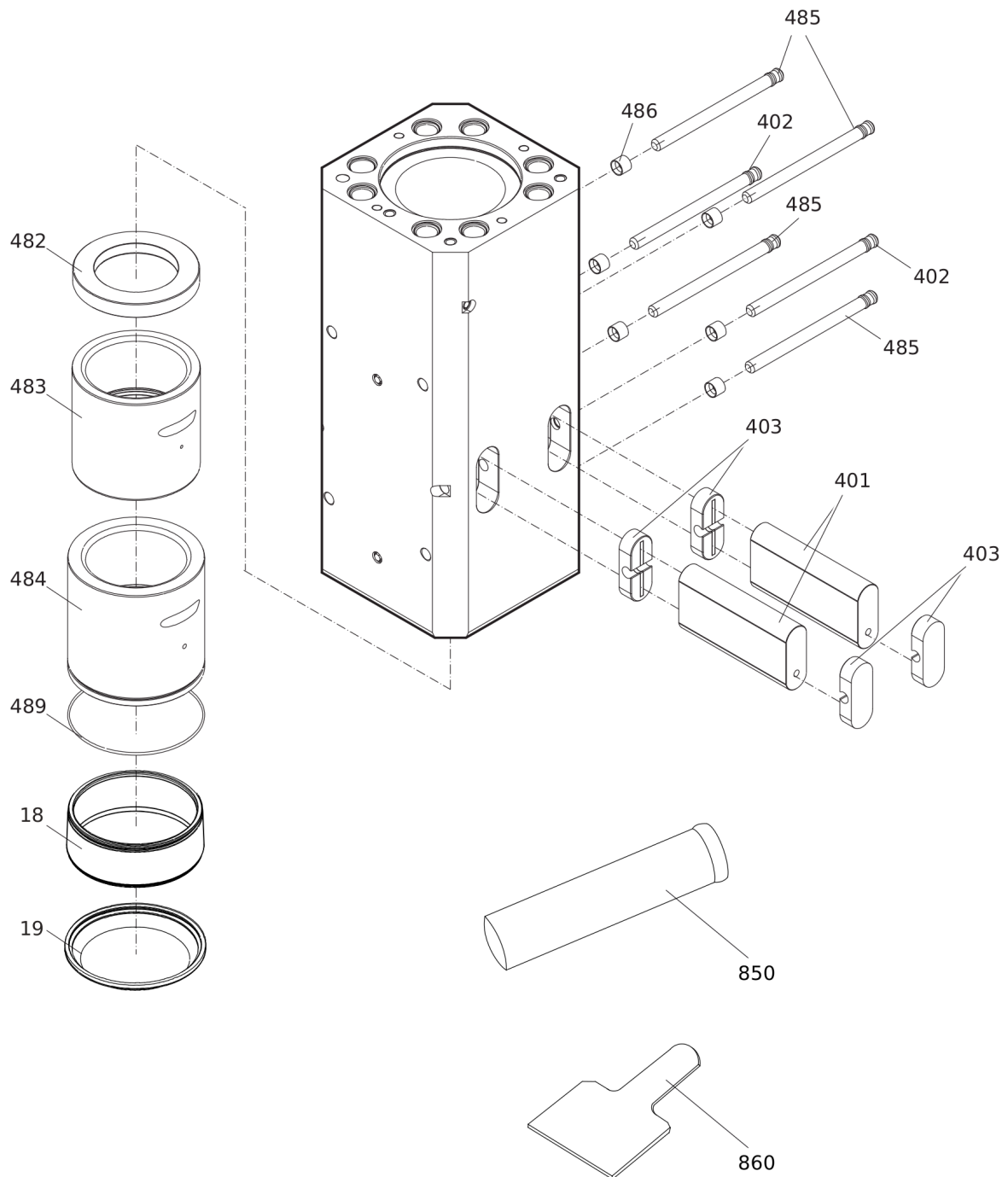
Item	Part No.	Name	Qty	L
KIT	3363113796	Noise protection kit	1	
31	3363031181	COVER	2	
32	3363086017	PLUG	15	
40	3363092697	COVER	1	

Service, repair and wear part kits Lower breaker part kit (bronze)



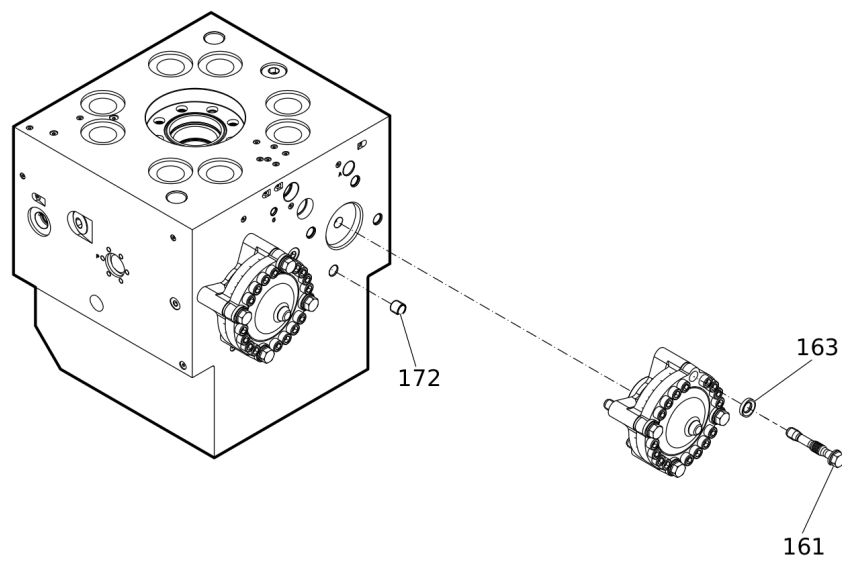
Item	Part No.	Name	Qty	L
KIT	3363103415	Lower breaker part kit (bronze)	1	
18	3363100709	Base for wiper	1	
19	3363100711	Wiper	11	
401	3363100027	Retainer bar	2	
402	3362260431	BOLT	2	
403	3363100029	Plug	4	
482	3363100035	Impact ring	1	
483	3363100037	Wear bush	1	
484	3363100039	Wear bush (bronze)	1	
485	3362260431	BOLT	4	
486	3362260433	LOCKING BUSH	6	
489	3363094978	O-ring	1	
850		BIO CHISEL PASTE CARTRIDGE, 1 x 400 g (0.88 lbs)	1	
860		Test gauge lower wear bush	1	

Service, repair and wear part kits Lower breaker part kit (steel)



Item	Part No.	Name	Qty	L
KIT	3363098332	Lower breaker part kit (steel)	1	
18	3363100709	Base for wiper	1	
19	3363100711	Wiper	1	
401	3363100027	Retainer bar	2	
402	3362260431	BOLT	2	
403	3363100029	Plug	4	
482	3363100035	Impact ring	1	
483	3363100037	Wear bush	1	
484	3363100041	Wear bush (steel)	1	
485	3362260431	BOLT	4	
486	3362260433	LOCKING BUSH	6	
489	3363094978	O-ring	1	
850		BIO CHISEL PASTE CARTRIDGE, 1 x 400 g (0.88 lbs)	1	
860	3363100467	Test gauge lower wear bush	1	

Service, repair and wear part kits Fastening screw kit



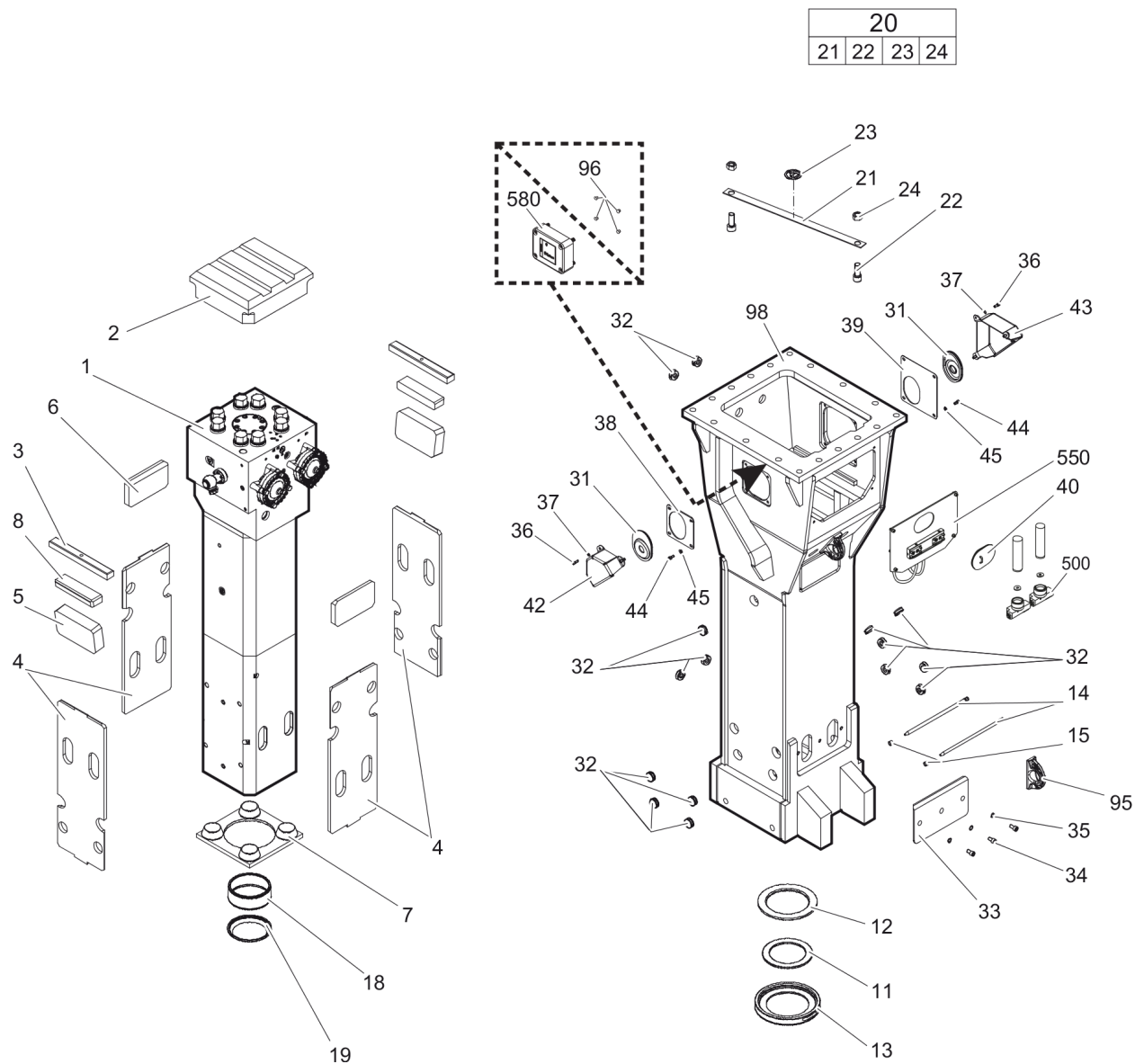
Item	Part No.	Name	Qty	L
KIT	3363098338	Fastening screw kit	1	
161	3363100047	Fastening screw	4	
163	3363100049	WASHER	4	
172	3363094982	Threaded insert	4	

Service, repair and wear part kits Accumulator repair kit

NO EXPLODED VIEW
AVAILABLE
FOR THIS BOM

Item	Part No.	Name	Qty	L
KIT	3363089850	ACCUMULATOR REPAIR KIT	1	
-	3361329022	DIAPHRAGM	1	
-	3360332259	FILLING SCREW	1	
-	3360314460	O-RING	1	
-	3361335025	PROTECTIVE CAP	1	
-	3360314364	O-RING	1	
-	3360328046	BACK-UP RING	1	

Mechanical Hydraulic breaker



Refer to the DocMine web page for most up-to-date information. The printed information might be outdated.

Wed Feb 07 10:53:01 UTC 2024

Item	Part No.	Name	Qty	L
1		Percussion unit	1	A
2	3363092957	Elastic pad	1	
3	3363093853	Shock absorber	2	
4	3363093855	Guide plate	4	
5	3362262667	GUIDE PLATE	2	
6	3362262665	GUIDE PLATE	2	
7	3363100713	Guide plate	1	
8	3363100777	Plate	2	
11	3363100701	Floating ring (tribolid)	1	B
12	3363100703	Counter ring	1	
13	3363100705	Guide ring	1	
14	3363100707	Bolt	2	
15	3361854363	LOCKING BUSH	2	
18	3363100709	Base for wiper	1	
19	3363100711	Wiper	1	
20(21-24)	3363094825	Transport safety device complete	1	
21		Transport safety device	1	
22	3360114151	ALLEN SCREW	2	
23	3363091872	LABEL TRANSPORT SAFETY DEVICE	1	
24	3360103255	NUT	2	
31	3363031181	COVER	2	
32	3363086017	PLUG	15	
33	3363126819	Plate	1	
34	3363083007	Allen screw	3	
35	3361850748	PAIR OF LOCK WASHERS	3	
36	3360103751	ALLEN SCREW	6	
37	3361850596	PAIR OF LOCK WASHERS	6	
38	3363098830	Plate	1	
39	3363103287	Plate	1	
40	3363092697	COVER	1	
42	3363111467	Swivel joint cover	1	
43	3363111472	Swivel joint cover	1	
44	3360103750	ALLEN SCREW	2	
45	3363111296	PAIR OF LOCK WASHERS	2	
95	3363111996	LIFTING EYE	2	C
96	3315439145	PROTECTIVE PLUG HATCON	4	E
98	3363113273	Breaker box	1	D

Refer to the DocMine web page for most up-to-date information. The printed information might be outdated.

Wed Feb 07 10:53:01 UTC 2024

Item	Part No.	Name	Qty	L
500	3363067123	AUTOMATIC LUBRICATION SYSTEM	2	
550		Connecting kit for automatic lubrication system	1	A
580		HATCON	1	F

Comments for Page: Hydraulic breaker

(L)OCAL REMARKS

A | see separate chapter

B | steel see chapter Optional parts

C | professional welding process necessary

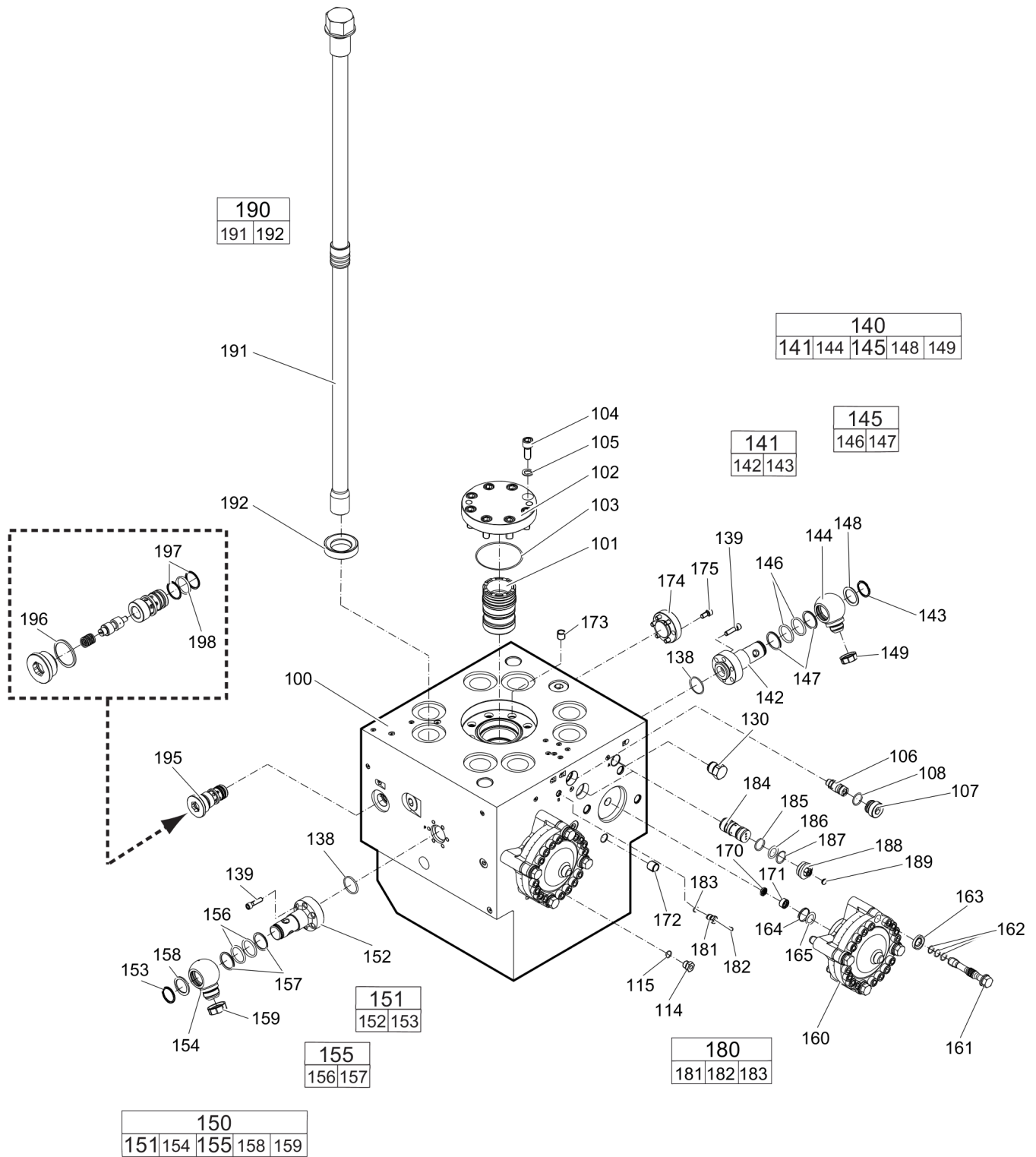
D | with item 95 and 96

E | only for hydraulic breakers without HATCON

F | only for hydraulic breakers with HATCON / see separate chapter

This page intentionally left blank

Mechanical Percussion unit part 1: cylinder cover



Refer to the DocMine web page for most up-to-date information. The printed information might be outdated.

Wed Feb 07 10:53:02 UTC 2024

Item	Part No.	Name	Qty	L
100	3363121100	Cylinder cover	1	A
101	3363100015	Main control valve	1	
102	3363100017	Cover	1	
103	3360478291	O-ring	1	
104	3360103776	ALLEN SCREW	8	
105	3361850748	PAIR OF LOCK WASHERS	8	
106	3363035453	VALVE	1	B
107	3363035425	THREADED PLUG	1	
108	3360314370	O-RING	1	
114	3361854657	CONNECTING SCREW	1	
115	3360478171	O-RING	1	
130	3361854511	NON-RETURN VALVE	1	
138	3360314373	O-RING	2	
139	3362328039	ALLEN SCREW	12	
140(141-149)	3363116889	SWIVEL JOINT complete	1	
141(142-143)	3363116887	ADAPTER complete	1	
142		ADAPTER	1	
143	3363116062	SNAPRING	1	
144	3363086569	ADAPTER	1	
145(146-147)	3361850422	SEAL KIT	1	
146		O-RING	2	
147		BACK-UP RING	2	
148	3361356645	DISK	1	
149	3363083749	CAP	1	
150(151-159)	3363116888	SWIVEL JOINT complete	1	
151(152-153)	3363116887	ADAPTER complete	1	
152		ADAPTER	1	
153	3363116062	SNAPRING	1	
154	3361356643	ADAPTER	1	
155(156-157)	3361850422	SEAL KIT	1	
156		O-RING	2	
157		BACK-UP RING	2	
158	3361356645	DISK	1	
159	3361353489	CAP	1	
160	3363094981	HP-ACCUMULATOR	2	
161	3363113101	FASTENING SCREW	8	C
162	3363114730	SERVICE KIT O-RINGS	2	D

Refer to the DocMine web page for most up-to-date information. The printed information might be outdated.

Wed Feb 07 10:53:02 UTC 2024

Item	Part No.	Name	Qty	L
163	3363100049	WASHER	8	
164	3360314364	O-RING	2	
165	3360328046	BACK-UP RING	2	
170	3361844113	STRAINER DISK	2	
171	3361844115	THREADED PLUG	2	
172	3363094982	Threaded insert	8	
173	3361031529	THREADED INSERT	8	
174	3363104787	FLANGE	1	
175	3360103750	ALLEN SCREW	6	
180(181-183)	3363087286	FILLING VALVE, complete	1	
181		FILLING VALVE	1	
182	3360478426	THREADED PLUG	1	
183	3360175125	O-RING	1	
184	3363126207	SAFETY VALVE	1	E
185	3363123253	SEAL	1	
186	3360314790	O-RING	1	
187	3363126739	BACK-UP RING	1	
188	3363126740	THREADED PLUG	1	F
189	3363087087	CAP	1	
190(191-192)	3363098321	Tensioning bolt complete	8	
191		Tensioning bolt	1	
192	3363093653	Washer	1	
195	3363120683	VALVE	1	G
196	3363121175	SEAL	1	
197	3363121176	BACK-UP RING	2	
198	3360314453	O-RING	1	

Comments for Page: Percussion unit part 1: cylinder cover

(L)OCAL REMARKS

A | with items 170 - 175

B | AutoControl

C | each fastening screw with 3 o-rings item 162

D | 12 o-rings for all 4 fastening screws item 161

E | PowerAdapt, with item 185

Only in exchange for the part to be replaced. Consult the authorized Customer Center/Dealer in your area.

F | with item 186, 187, 189

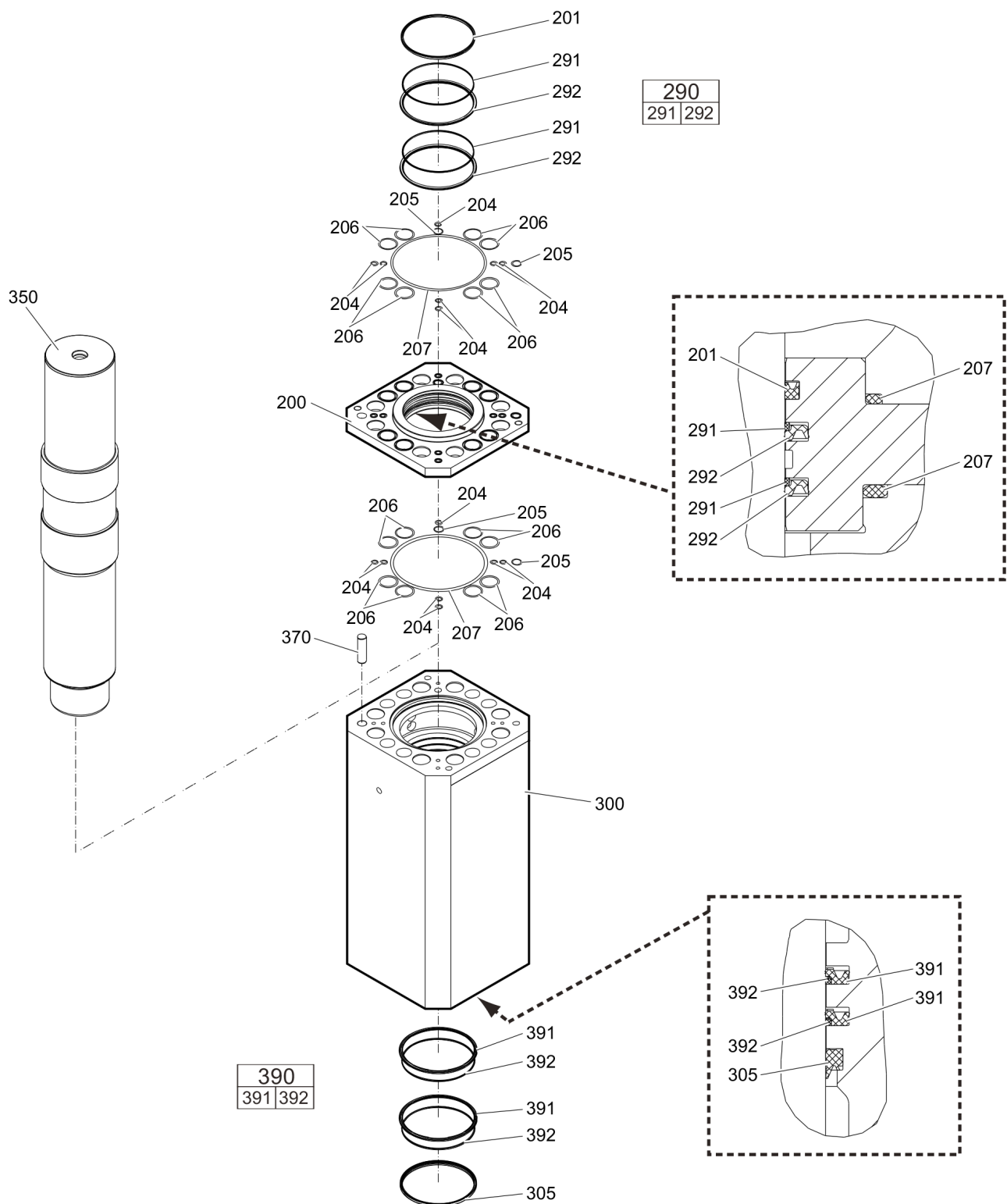
G | IPS - Intelligent Protection System, with item 196 - 198

Refer to the DocMine web page for most up-to-date information. The printed information might be outdated.

Wed Feb 07 10:53:03 UTC 2024

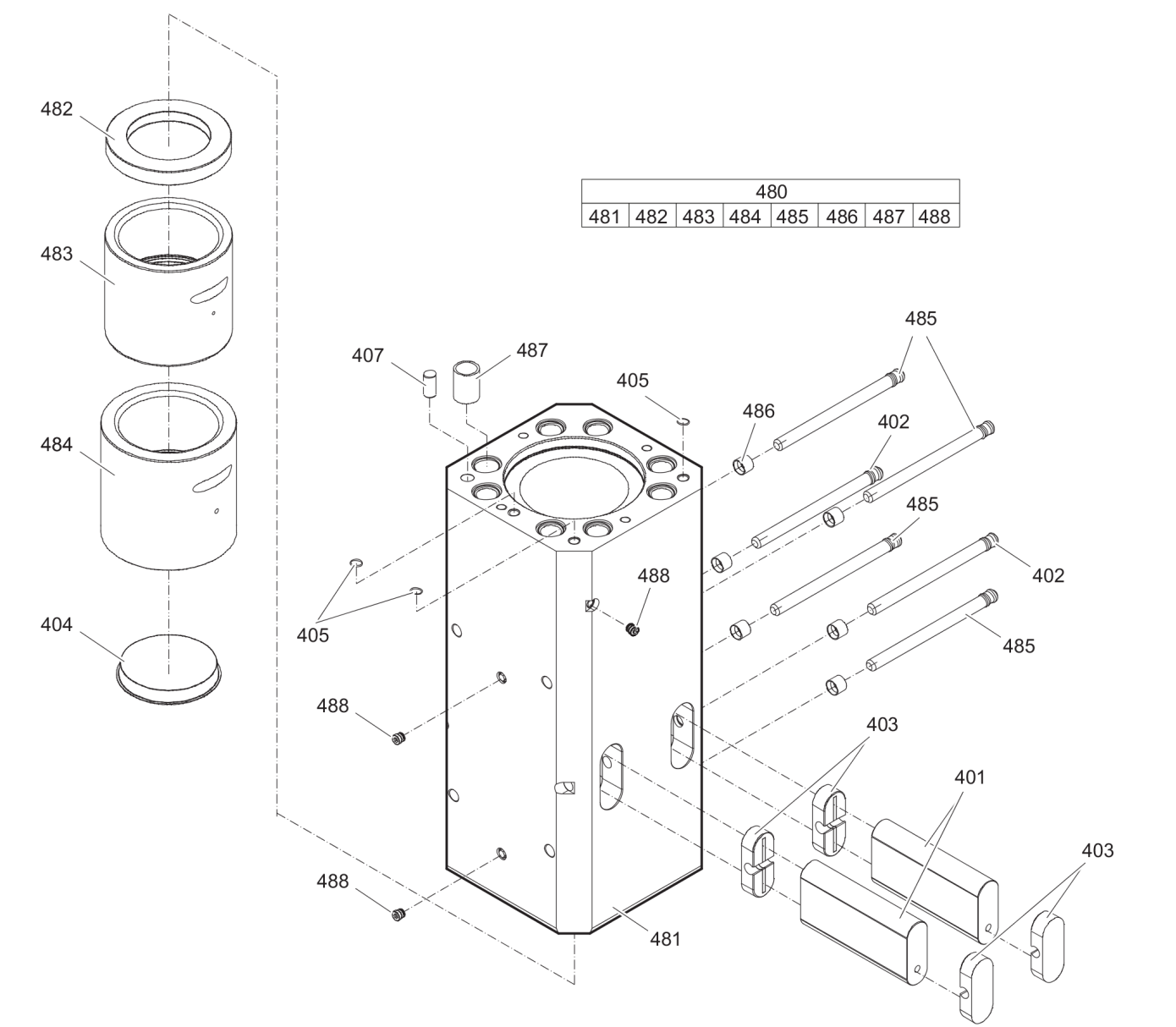
This page intentionally left blank

Mechanical Percussion unit part 2: cylinder



Item	Part No.	Name	Qty	L
200	3363120931	Seal flange	1	
201	3363103420	Seal	1	
204	3363124052	Seal	14	
205	3363124053	Seal	4	
206	3363124054	Seal	16	
207	3363094978	O-ring	2	
290(291-292)	3363098324	Seal kit	2	
291		Back-up ring	1	
292		Seal	1	
300	3363121101	Cylinder	1	
305	3363094974	Wiper	1	
350	3363098300	Percussion piston	1	
370	3360106819	LOCK PIN	1	
390(391-392)	3363098325	Seal kit	2	
391		Seal	1	
392		Back-up ring	1	

Mechanical Percussion unit part 3: lower breaker part (steel)



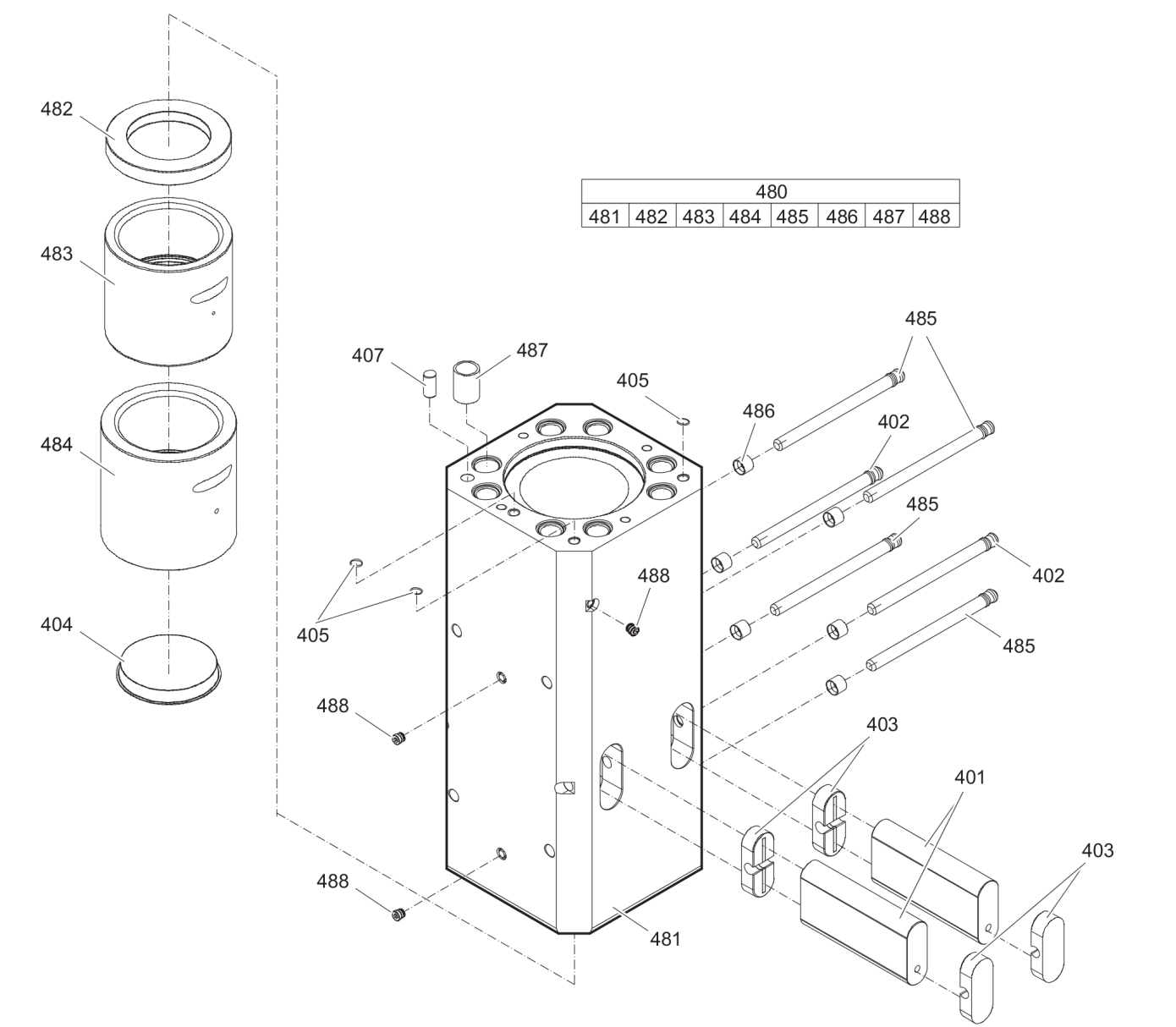
Item	Part No.	Name	Qty	L
401	3363100027	Retainer bar	2	
402	3362260431	BOLT	2	
403	3363100029	Plug	4	
404	3363094977	Protective cap	1	
405	3360314453	O-RING	3	
407	3360106818	LOCK PIN	1	
480(481-489)	3363098316	Lower breaker part complete with lower wear bush steel	1	A
481		Lower breaker part	1	
482	3363100035	Impact ring	1	
483	3363100037	Wear bush	1	
484	3363100041	Wear bush (steel)	1	
485	3362260431	BOLT	4	
486	3362260433	LOCKING BUSH	6	
487	3363085321	Threaded insert	8	
488	3363086301	PLUG	4	

Comments for Page: Percussion unit part 3: lower breaker part (steel)

(L)OCAL REMARKS

A | Note: When ordering a lower breaker part for DustProtector version it is imperative to order additionally the base for wiper (item 18) and the wiper (item 19).

Mechanical Percussion unit part 3: lower breaker part (bronze)



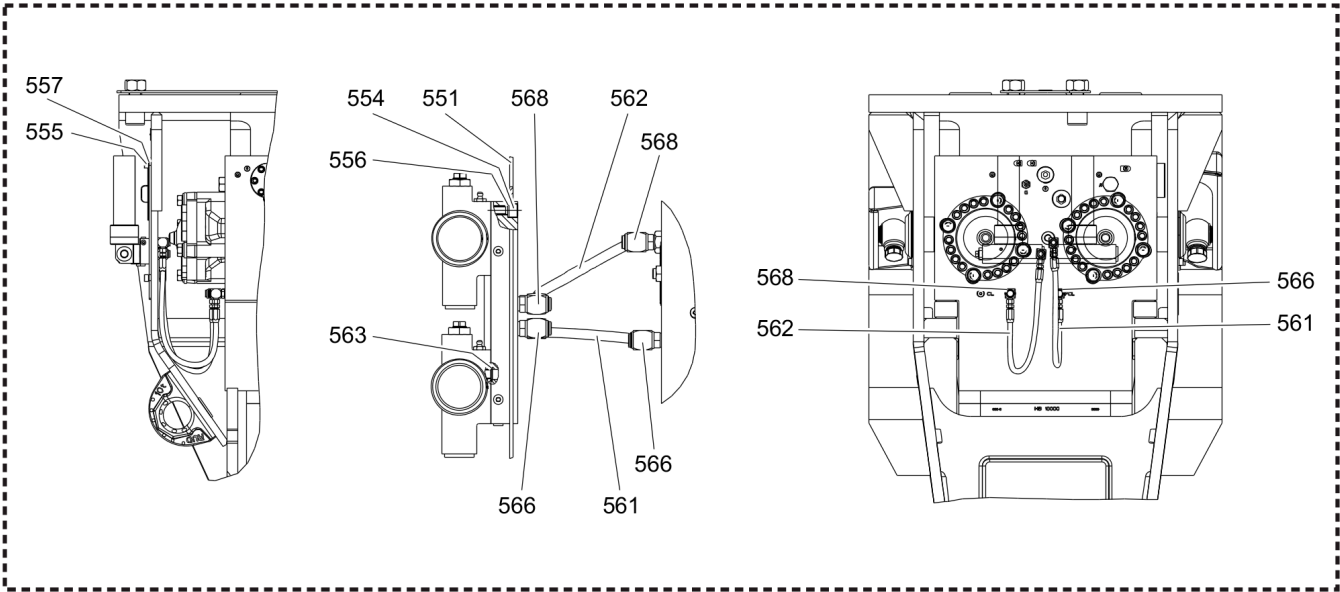
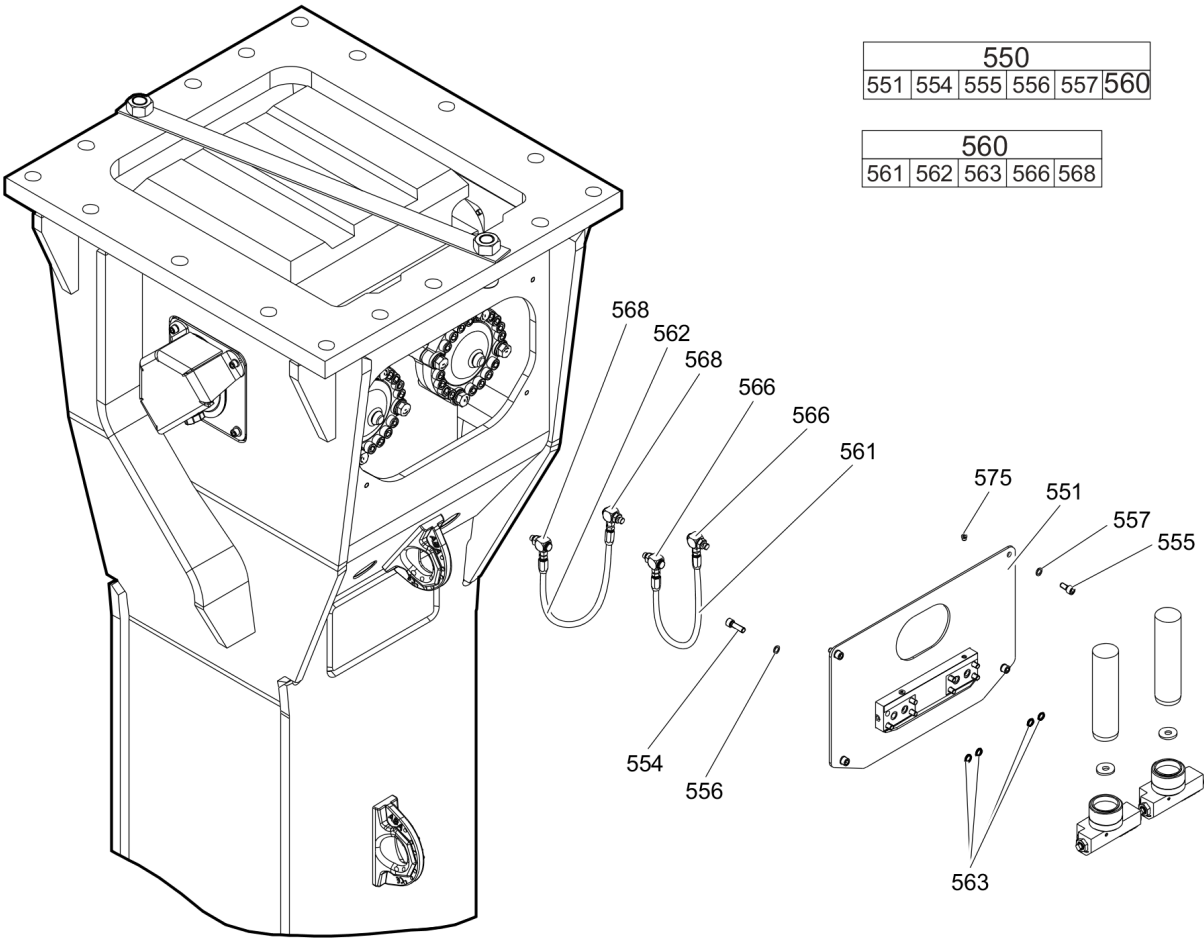
Item	Part No.	Name	Qty	L
401	3363100027	Retainer bar	2	
402	3362260431	BOLT	2	
403	3363100029	Plug	4	
404	3363094977	Protective cap	1	
405	3360314453	O-RING	3	
407	3360106818	LOCK PIN	1	
480(481-489)	3363116921	Lower breaker part complete with lower wear bush bronze	1	A
481		Lower breaker part	1	
482	3363100035	Impact ring	1	
483	3363100037	Wear bush	1	
484	3363100039	Wear bush (bronze)	1	
485	3362260431	BOLT	4	
486	3362260433	LOCKING BUSH	6	
487	3363085321	Threaded insert	8	
488	3363086301	PLUG	4	

Comments for Page: Percussion unit part 3: lower breaker part (bronze)

(L)OCAL REMARKS

A | Note: When ordering a lower breaker part for DustProtector version it is imperative to order additionally the base for wiper (item 18) and the wiper (item 19).

Mechanical Connecting kit for automatic lubrication system



Item	Part No.	Name	Qty	L
550(551-560)		Connecting kit for automatic lubrication system	1	
551	3363119008	Support	1	A
554	3360026512	ALLEN SCREW	8	B
555	3362328113	ALLEN SCREW	4	
556	3361850596	PAIR OF LOCK WASHERS	8	
557	3361333703	PAIR OF LOCK WASHERS	4	
560(561-569)	3363119351	Connecting kit for automatic lubrication system	1	C
561	3363083878	HYDRAULIC HOSE	1	D
562	3363083874	HYDRAULIC HOSE	1	E
563	3362267584	SEAL - Merkel Stirromatic Sealing	4	
566	3363087185	FITTING	2	B
568	3363087186	FITTING	2	B
575	3360107879	PLUG	3	
KIT	3363091732	SEAL KIT for swivel joint for automatic lubrication system	1	

Comments for Page: Connecting kit for automatic lubrication system

(L)OCAL REMARKS

A | with item 575

B | secure with Loctite 243

C | without fastening elements

D | Oil line

secure with Loctite

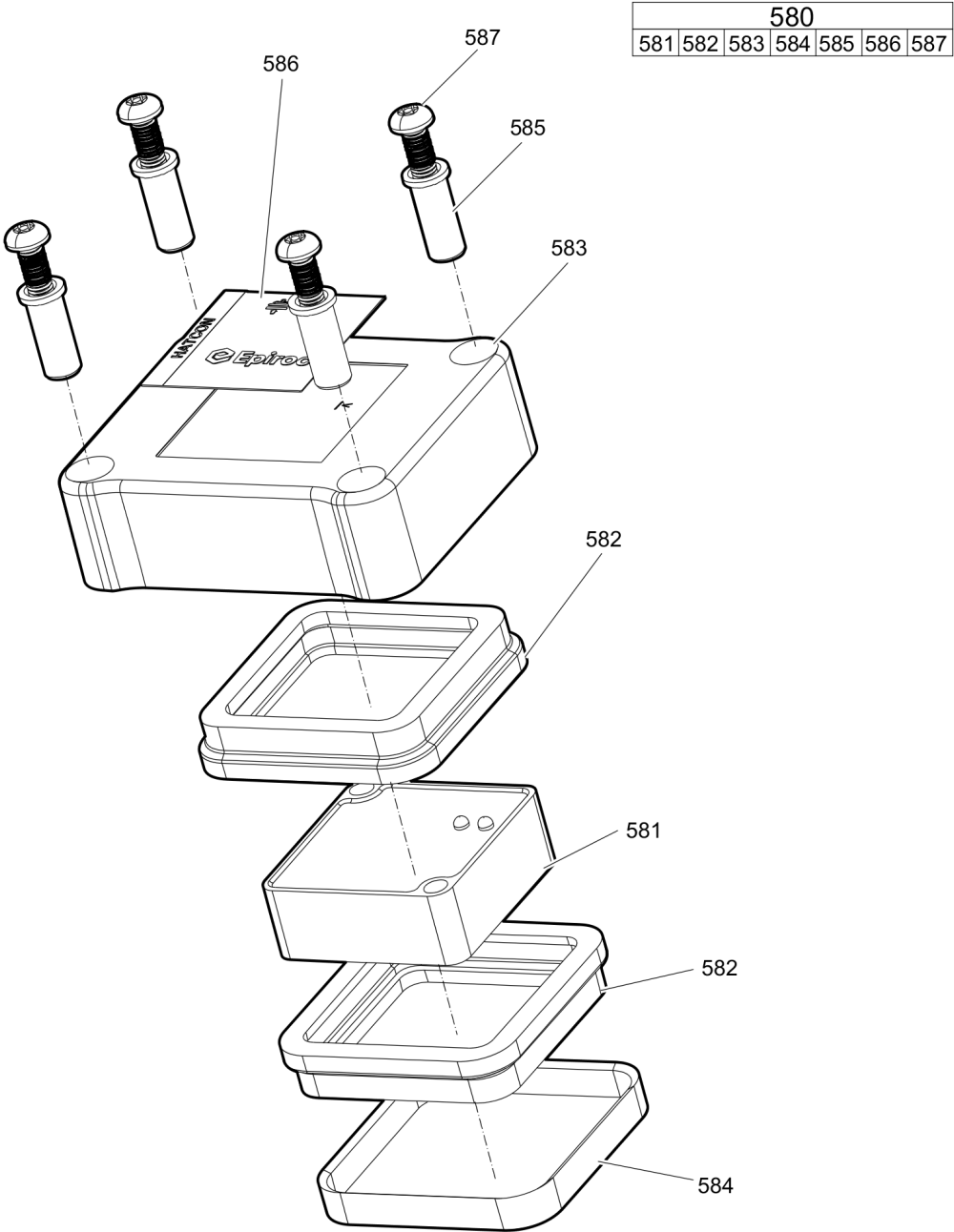
Route the hydraulic hoses as shown on the drawing. It must be ensured that the hydraulic hoses can move freely and are not in contact at any point.

E | Grease line

secure with Loctite

Route the hydraulic hoses as shown on the drawing. It must be ensured that the hydraulic hoses can move freely and are not in contact at any point.

Mechanical HATCON

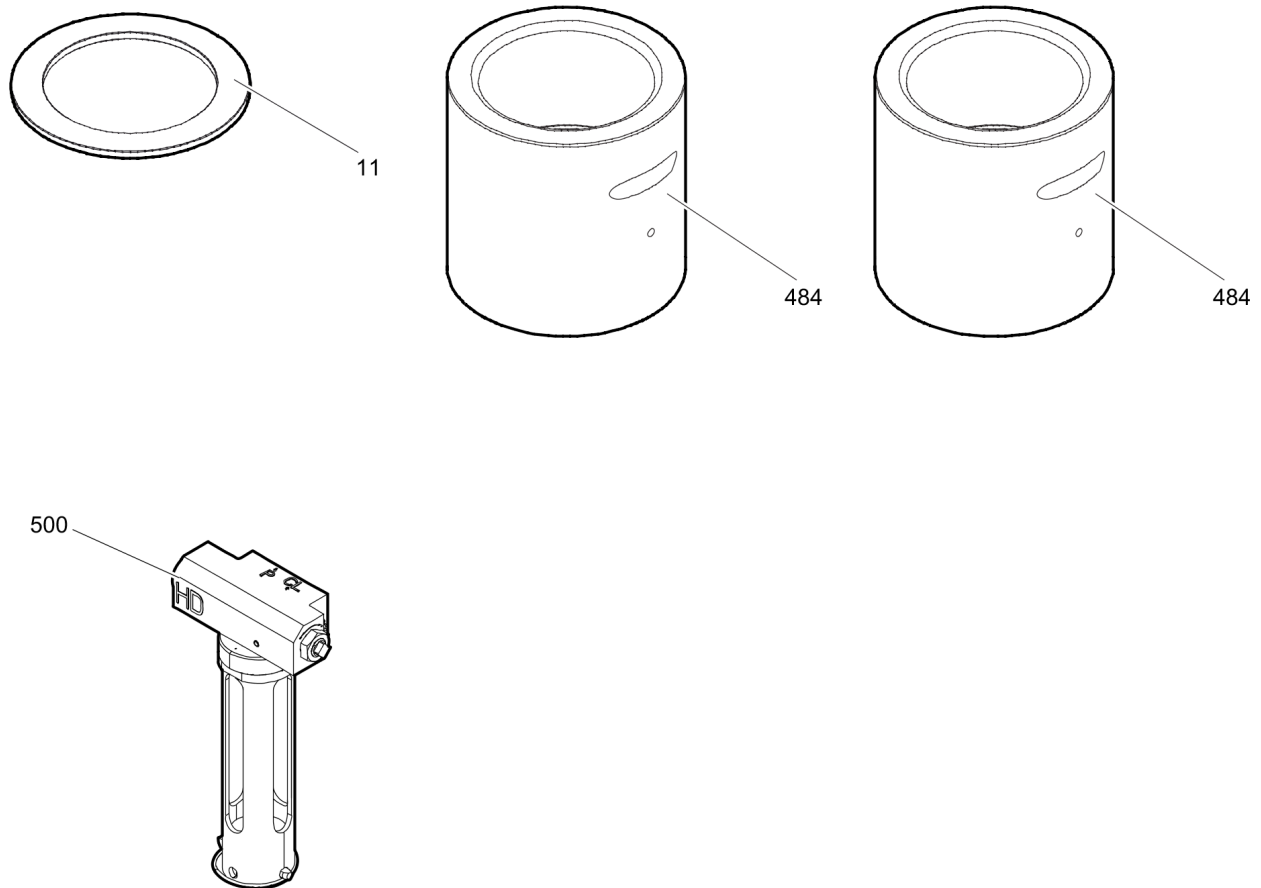


Item	Part No.	Name	Qty	L
580(581-587)		HATCON	1	A
581		TRACKING MODULE HATCON	1	
582	3315439130	DAMPER HATCON	2	
583	3315439110	HOUSING TYPE 1 HATCON	1	
584	3315439140	LOCK RING HATCON	1	
585	3315439120	SLEEVE HATCON	4	
586	3315439100	PRODUCT LABEL HATCON	1	
587	3315442600	SCREW HATCON	4	

Comments for Page: HATCON

A | part number see chapter "Optional equipment"

Mechanical Optional parts



Item	Part No.	Name	Qty	L
11	3363100715	Floating ring	1	
484	3363100041	Wear bush (steel)	1	
484	3363100039	Wear bush (bronze)	1	
500	3363117931	AUTOMATIC LUBRICATION SYSTEM HD	2	

Mechanical Tightening torques

NO EXPLODED VIEW
AVAILABLE
FOR THIS BOM

Item	Part No.	Name	Qty	L
34	-	Allen screw - 400 Nm (295 ft lbf)	-	A
36	-	ALLEN SCREW - 85 Nm (63 ft lbf)	-	B
44	-	ALLEN SCREW - 85 Nm (63 ft lbf)	-	B
104	-	ALLEN SCREW - 380 Nm (280 ft lbf)	-	A
107	-	THREADED PLUG - 300 Nm (221 ft lbf)	-	C
110	-	THREADED PLUG - 300 Nm (221 ft lbf)	-	D
130	-	NON-RETURN VALVE - 200 Nm (148 ft lbf)	-	E
139	-	ALLEN SCREW - 80 Nm (59 ft lbf)	-	B
161	-	FASTENING SCREW -	-	F
175	-	ALLEN SCREW - 80 Nm (59 ft lbf)	-	B
181	-	FILLING VALVE - 130 Nm (96 ft lbf)	-	G
182	-	THREADED PLUG - 20 Nm (15 ft lbf)	-	H
188	-	Threaded plug - 300 Nm (221 ft lbf)	-	D
191	-	TENSIONING BOLT -	-	I
195	-	VALVE - 250 Nm (184 ft lbf)	-	O
554	-	ALLEN SCREW - 85 Nm (63 ft lbf)	-	B
555	-	ALLEN SCREW - 200 Nm (148 ft lbf)	-	J
561	-	HYDRAULIC HOSE - 42 Nm (31 ft lbf)	-	K
562	-	HYDRAULIC HOSE - 16 Nm (12 ft lbf)	-	L
566	-	FITTING - 60 Nm (44 ft lbf)	-	M
568	-	FITTING - 50 Nm (37 ft lbf)	-	N
587	-	SCREW HATCON - 22 Nm (16 ft lbf)	-	P

Comments for Page: Tightening torques

(L)OCAL REMARKS

A | Allen key size 17

B | Allen key size 10

C | Allen key size 22

D | Socket spanner size 24

E | Socket spanner size 41

F | Socket spanner size 30

1. Treat the threads and threaded inserts for the fastening screws with an Anti-Seize agent.
2. Treat the surfaces between the screw head, washer, and HP-accumulator cover with Anti-Seize.
3. Place on the HP-accumulator, and tighten the fastening screws by hand in a crosswise fashion.
4. Pretighten the fastening screws to 120 Nm (89 ft lbf), proceeding in a crosswise fashion,
5. then tighten each screw through 30° in a crosswise fashion,
6. finally tighten each screw again through 60° in a crosswise fashion.

G | Socket spanner size 22

Refer to the DocMine web page for most up-to-date information. The printed information might be outdated.

Wed Feb 07 10:53:07 UTC 2024

H | Allen key size 5

I | Torque wrench or Power wrench size 75

1. Pretighten the tensioning bolts to 500 Nm (369 ft lbf), proceeding in a crosswise fashion,
2. then tighten each tensioning bolt through 120° (2 sides of hexagonal head) in a crosswise fashion,
3. then tighten each tensioning bolt through 120° (2 sides of hexagonal head) in a crosswise fashion,
4. finally tighten each tensioning bolt again through 150° (2 1/2 sides of hexagonal head) in a crosswise fashion.

J | Allen key size 14

K | Open-ended wrench size 19

L | Open-ended wrench size 17

M | Open-ended wrench size 19, 22, 27

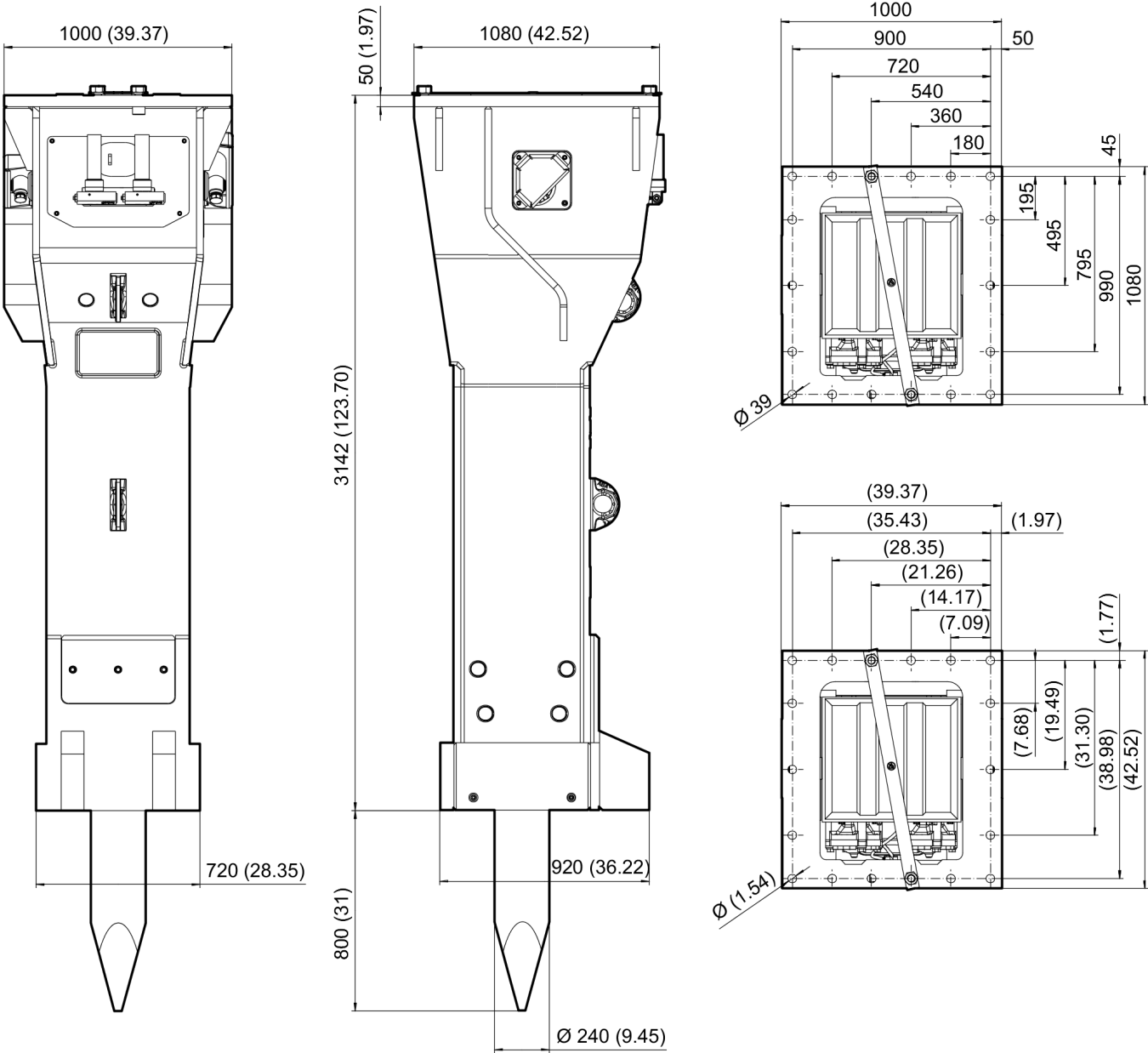
N | Open-ended wrench size 17, 22, 27

O | Allen key size 24

P | Security bit HATCON

This page intentionally left blank

Mechanical Dimensions



This page intentionally left blank

Options / accessories Hydraulic hoses

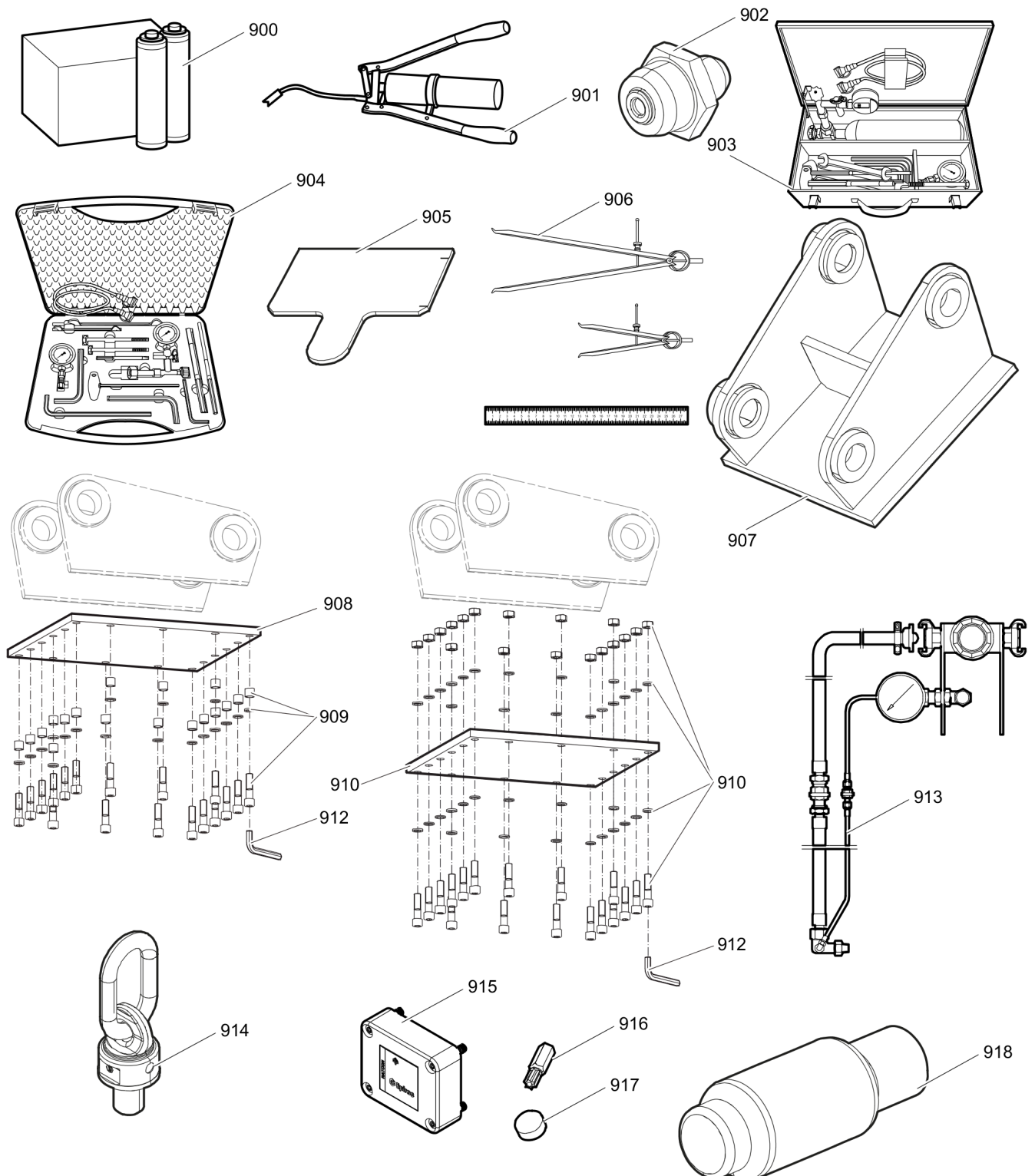
NO EXPLODED VIEW
AVAILABLE
FOR THIS BOM

Item	Part No.	Name	Qty	L
-	3361853860	HYDRAULIC HOSE, I.D. 32 (1 1/4"), both ends JIC 1 5/8", length 2800 mm (110 in.)	1	
-	3363083563	HYDRAULIC HOSE, I.D. 40 (1 1/2"), both ends JIC 1 7/8", length 2800 mm (110 in.)	1	A
-	3361853861	HYDRAULIC HOSE, I.D. 32 (1 1/4"), both ends JIC 1 5/8", length 3500 mm (138 in.)	1	
-	3363083562	HYDRAULIC HOSE, I.D. 40 (1 1/2"), both ends JIC 1 7/8", length 3500 mm (138 in.)	1	A

Comments for Page: Hydraulic hoses

A | Return line

Options / accessories Optional equipment



Refer to the DocMine web page for most up-to-date information. The printed information might be outdated.
Wed Feb 07 10:53:09 UTC 2024

Item	Part No.	Name	Qty	L
900	3363122356	BIO CHISEL PASTE CARTRIDGE, 12 x 550 g (1.2 lbs)	1	
900	3363091200	CHISEL PASTE CARTRIDGE, 12 x 500 g (1.1 lbs)	1	
901	3363034567	GREASE PUMP	1	
902	3360433774	GREASE NIPPLE	1	
903	3363089845	MAINTENANCE AND CHARGING BOX with nitrogen cylinder, 5 l, 1.1 gal (1.32 US gal)	1	
904	3363094940	MAINTENANCE AND CHARGING BOX without nitrogen cylinder	1	
905	3363100467	Test gauge lower wear bush	1	
906	3363094952	INSIDE CALLIPERS UPPER WEAR BUSH	1	
907		ADAPTER PLATE matching the carrier. Consult the authorized Customer Center/Dealer in your area.	1	
908	3363104609	Base plate with threaded inserts	1	
909	3363103061	Bolt kit	1	
910	3363102877	Base plate with through borings	1	
911	3363094578	Bolt kit	1	
912	3360103802	Allen screw	1	
913	3363103077	ADAPTER KIT for underwater applications	1	
914	3363094400	Vertebral block M48 X 68	2	
915	3315442500	HATCON KIT 1 (3G)	1	A
915	3315442520	HATCON KIT 1 (LTE)	1	A
916	3315439105	SECURITY BIT HATCON	1	
917	3315439106	MAGNET HATCON	1	
918	3363100051	Piston retainer	1	B

Comments for Page: Optional equipment

A | with item 916 and 917

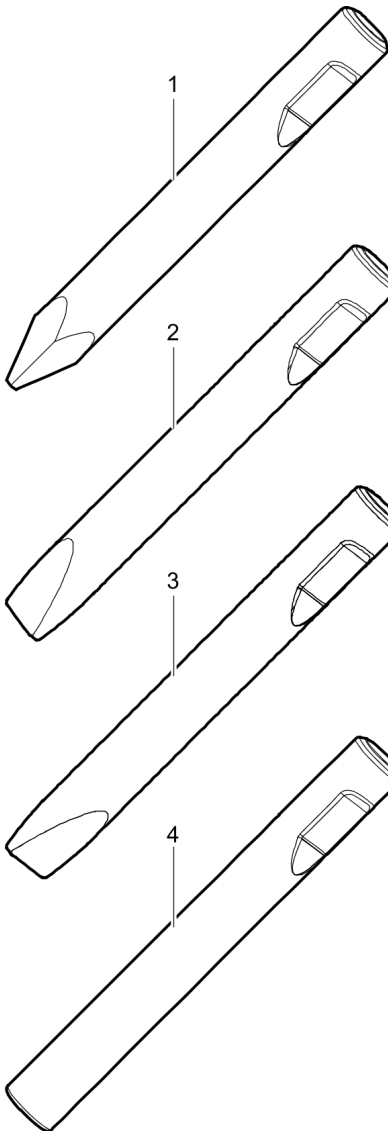
Hydraulic breakers are factory equipped with threads for attaching Retrofit kit HATCON

from s/n DEQ200144 - (HB 10000 DP with lower wear bush steel)

from s/n DEQ200500 - (HB 10000 DP with lower wear bush bronze)

B | Consult the authorized Customer Center/Dealer in your area.

Options / accessories Working tools ClassicLine

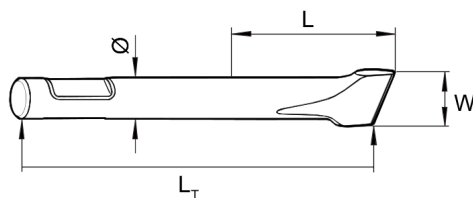


Ø=240 mm, L=800 mm, LT=1820 mm, Wt=548.0 kg
Ø=9.45 inch, L=31 inch, LT=71.65 inch, Wt=1208.1 lb

Ø=240 mm, W=240 mm, L=800 mm, LT=1820 mm, Wt=575.0 kg
Ø=9.45 inch, W=9.45 inch, L=31 inch, LT=71.65 inch, Wt=1267.7 lb

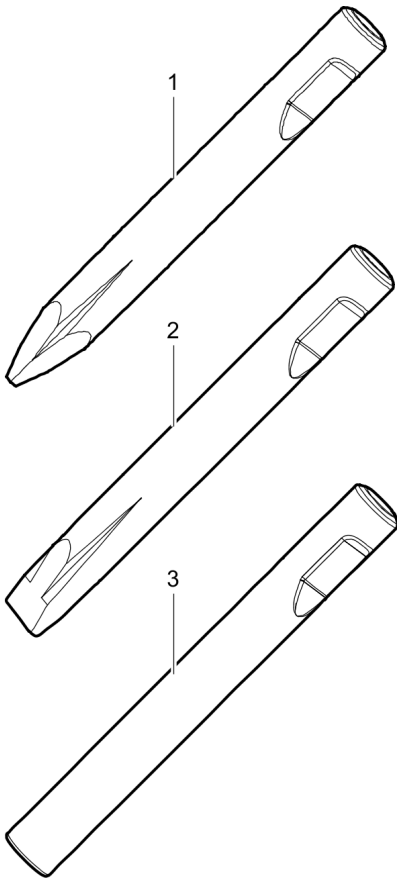
Ø=240 mm, W=240 mm, L=800 mm, LT=1820 mm, Wt=575.0 kg
Ø=9.45 inch, W=9.45 inch, L=31 inch, LT=71.65 inch, Wt=1267.7 lb

Ø=240 mm, L=800 mm, LT=1820 mm, Wt=623.0 kg
Ø=9.45 inch, L=31 inch, LT=71.65 inch, Wt=1373.5 lb



Item	Part No.	Name	Qty	L
1	3363119573	Moil point	1	
2	3363119574	Chisel (cross)	1	
3	3363119575	Chisel (parallel)	1	
4	3363119576	Blunt tool	1	

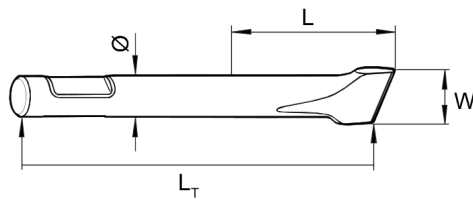
Options / accessories Working tools ProLine



Ø=240 mm, L=880 mm, LT=1900 mm, Wt=570.0 kg
Ø=9.45 inch, L=35 inch, LT=74.80 inch, Wt=1256.6 lb

Ø=240 mm, W=240 mm, L=880 mm, LT=1900 mm, Wt=594.0 kg
Ø=9.45 inch, W=9.45 inch, L=35 inch, LT=74.80 inch, Wt=1309.5 lb

Ø=240 mm, L=880 mm, LT=1900 mm, Wt=651.0 kg
Ø=9.45 inch, L=35 inch, LT=74.80 inch, Wt=1435.2 lb



Item	Part No.	Name	Qty	L
1	3363106485	Moil point	1	
2	3363106486	Chisel (cross)	1	
3	3363099051	Blunt tool	1	

Any unauthorized use or copying of the contents or any part thereof is prohibited.
This applies in particular to trademarks, model denominations, part numbers, and drawings.