

# HB 7000, 7000 DP

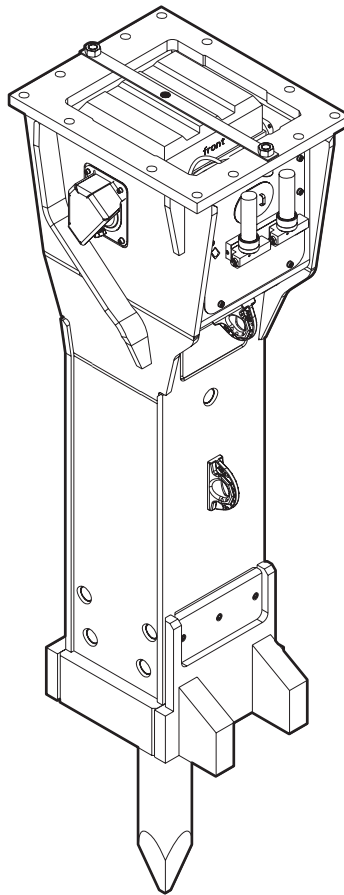
---

## Spare parts list

### Hydraulic breakers

HB 7000 s/n DEQ220482 -

HB 7000 DP s/n DEQ220482 -



# General information

This spare parts list applies to the following:

Part number	Description
3363120920	Hydraulic breaker HB 7000 with lower wear bush (steel)
3363121277	Hydraulic breaker HB 7000 with lower wear bush (bronze)
3363120949	Hydraulic breaker HB 7000 DP with lower wear bush (steel)
3363121278	Hydraulic breaker HB 7000 DP with lower wear bush (bronze)
3363124802	Hydraulic breaker HB 7000 with lower wear bush (steel) with HATCON (3G)
3363124803	Hydraulic breaker HB 7000 with lower wear bush (bronze) with HATCON (3G)
3363124804	Hydraulic breaker HB 7000 DP with lower wear bush (steel) with HATCON (3G)
3363124805	Hydraulic breaker HB 7000 DP with lower wear bush (bronze) with HATCON (3G)
3363126884	Hydraulic breaker HB 7000 with lower wear bush (steel) with HATCON (LTE)
3363126885	Hydraulic breaker HB 7000 with lower wear bush (bronze) with HATCON (LTE)
3363126886	Hydraulic breaker HB 7000 DP with lower wear bush (steel) with HATCON (LTE)
3363126887	Hydraulic breaker HB 7000 DP with lower wear bush (bronze) with HATCON (LTE)

Use only authorized parts. Any damage or malfunction caused by the use of unauthorized parts is not covered by Warranty or Product Liability. Any unauthorized use or copying of the contents or any part thereof is prohibited. This applies in particular to trademarks, model denominations, part numbers, and drawings.

## Instructions for use

This spare parts list contains no safety regulations and is merely intended to assist in the ordering of spare parts.

For information about operating, servicing, or repairing, the relevant Safety and operating instructions must be consulted at all costs.

Please observe the safety instructions listed in the relevant Safety and operating instructions!

## Instructions for ordering

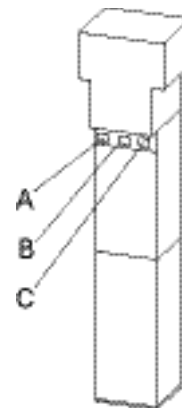
It is essential to indicate the serial number of the hydraulic attachment when ordering spare parts!

Please note the full identification number of your hydraulic attachment.

The code can be found on the cylinder.

Determine the quantity of individual parts which are required and need to be ordered. The order must indicate the following details:

- full identification code of the hydraulic attachment
- required quantity
- part number
- description



- A. Cylinder number
- B. Type
- C. Serial number

## Service, repair and wear part kits

Label kit	1
Seal kit	3
Plastic parts kit	5
Tensioning bolt kit	7
DustProtector kit	9
Noise protection kit	11
Lower breaker part kit (bronze)	13
Lower breaker part kit (steel)	15
Lower breaker part kit (bronze) DustProtector	17
Lower breaker part kit (steel) DustProtector	19
Fastening screw kit	21
Accumulator repair kit	23

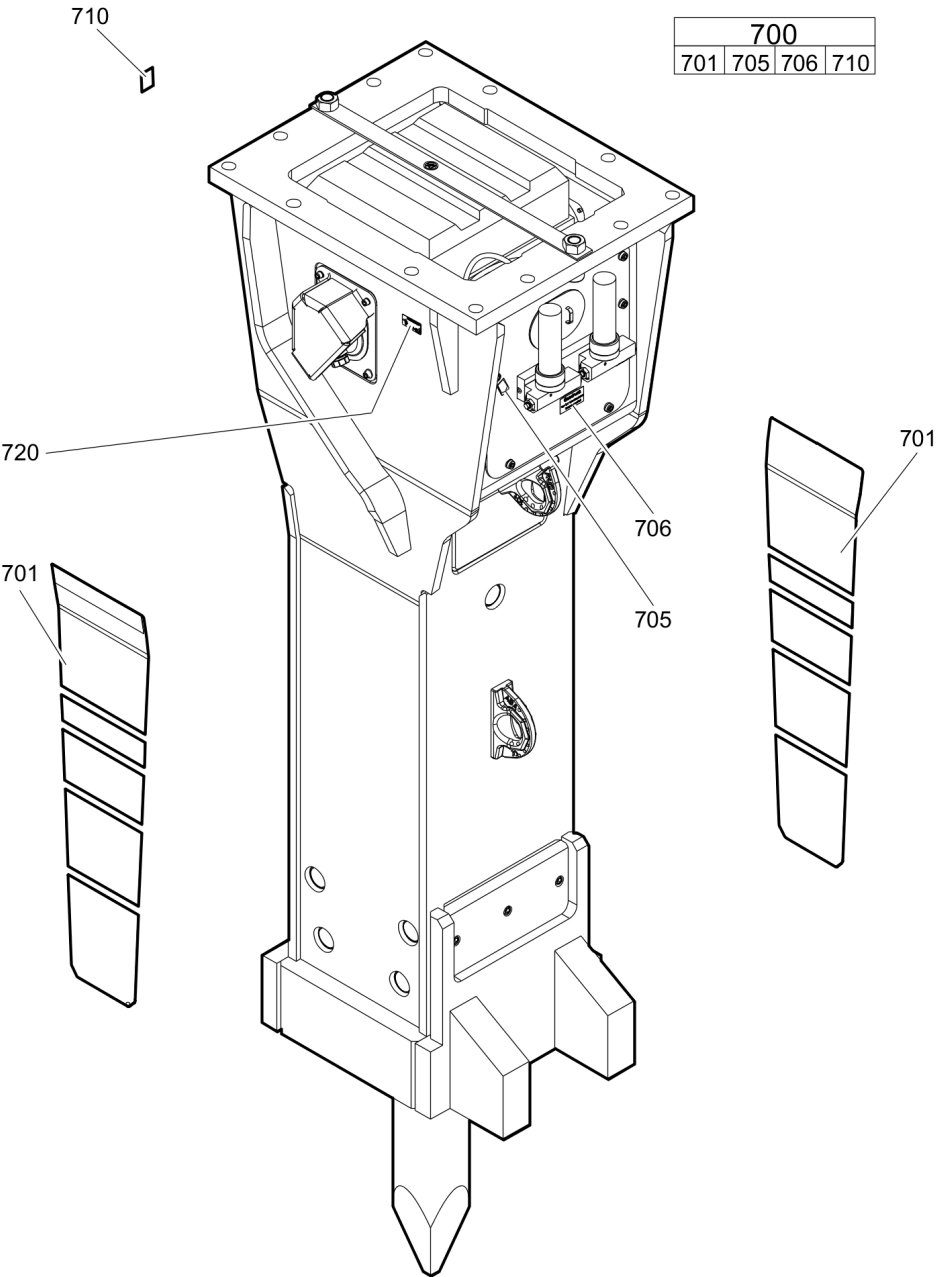
## Mechanical

Hydraulic breaker HB 7000	25
Hydraulic breaker HB 7000 DP	28
Percussion unit part 1: cylinder cover	32
Percussion unit part 2: cylinder	36
Percussion unit part 3: lower breaker part (steel)	39
Percussion unit part 3: lower breaker part (bronze)	41
Connecting kit for automatic lubrication system	43
HATCON	45
Optional parts	47
Tightening torques	49
Dimensions HB 7000	52
Dimensions HB 7000 DP	54

## Options / accessories

Hydraulic hoses	56
Optional equipment	59
Working tools ClassicLine HB 7000	61
Working tools ProLine HB 7000	63
Working tools ClassicLine HB 7000 DP	65
Working tools ProLine HB 7000 DP	67

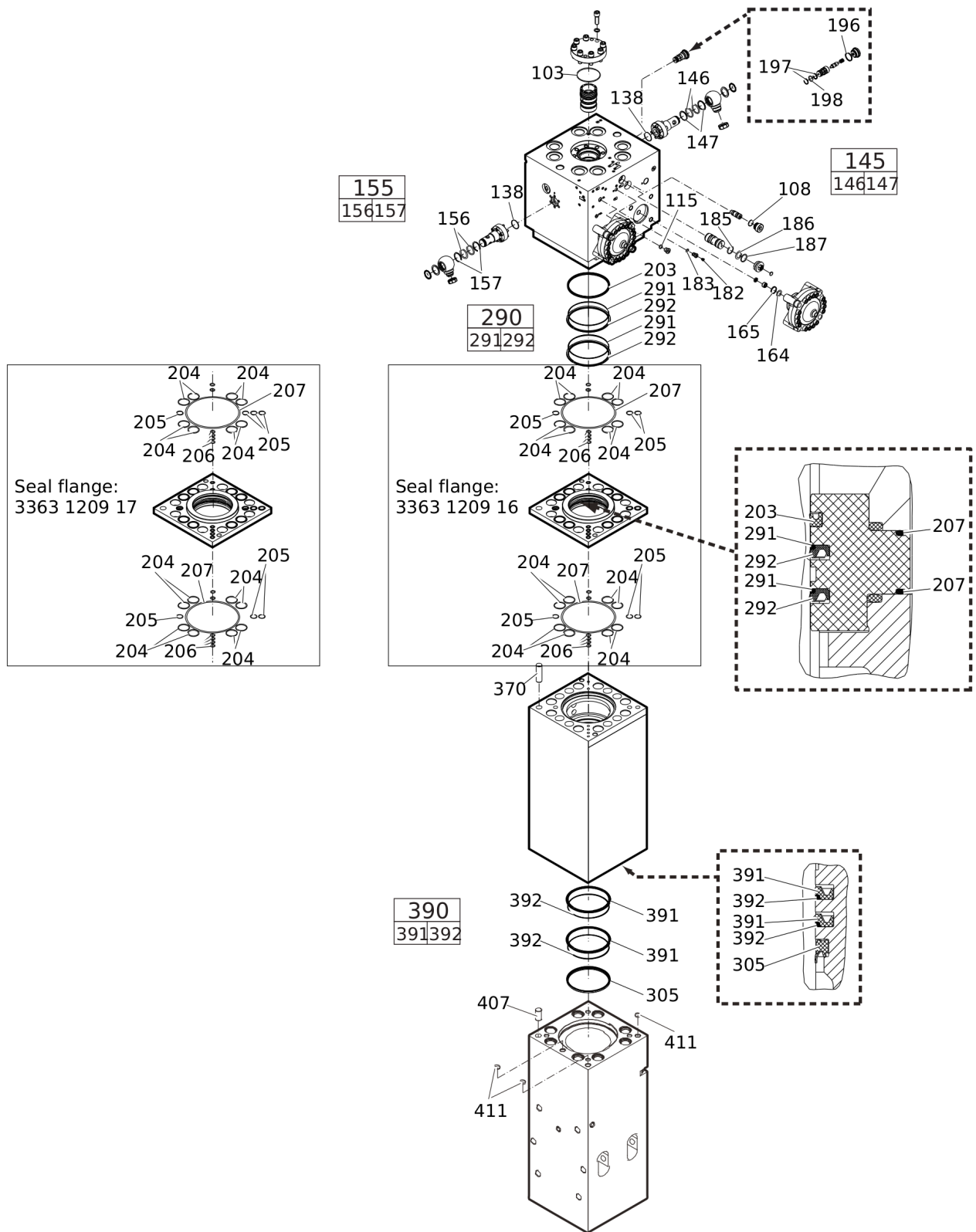
Service, repair and wear part kits Label kit





Item	Part No.	Name	Qty	L
700(701-710)	3363121380	LABLE KIT HB 7000	1	
701		PRODUCT LABEL	2	
705		LABEL - LUBRICATING SYMBOL	1	
706		GAS PRESSURE LABEL	2	
710		SOUND POWER LABEL	1	
720		NAME PLATE - Consult the authorized Customer Center/Dealer in your area.	1	

## Service, repair and wear part kits Seal kit



Refer to the DocMine web page for most up-to-date information. The printed information might be outdated.

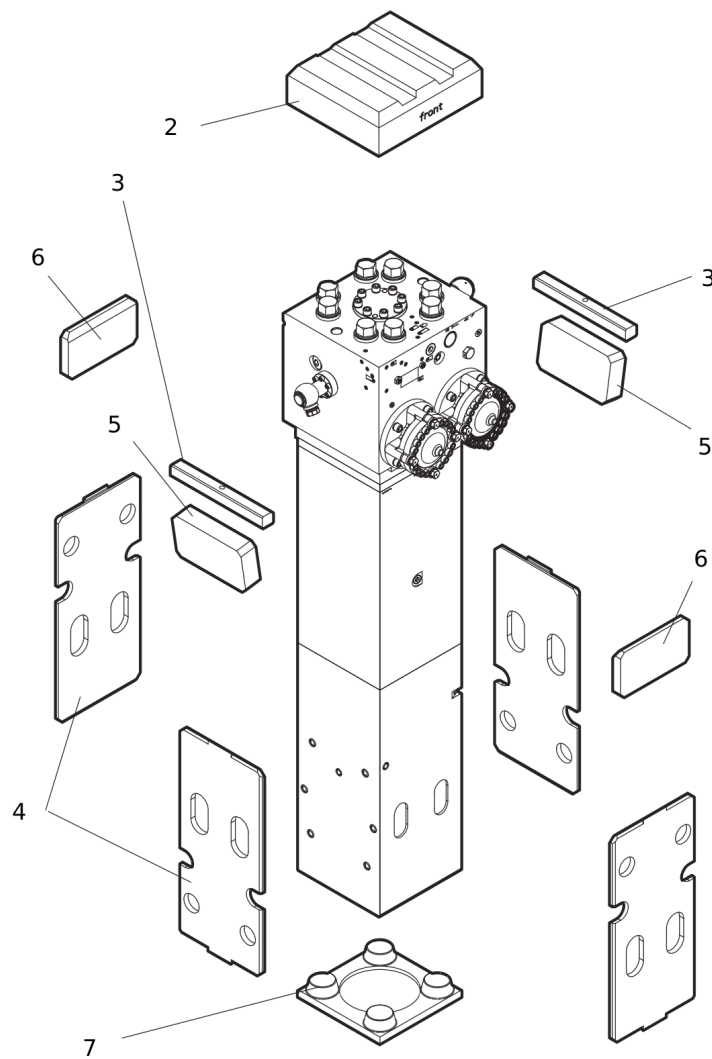
Thu Feb 08 06:47:49 UTC 2024

Item	Part No.	Name	Qty	L
KIT	3363121225	SEAL KIT	1	
103	3360314376	O-RING	1	
108	3360314370	O-RING	1	
115	3360478171	O-RING	1	
138	3360314373	O-RING	2	
145(146-147)	3361850422	SEAL KIT	1	
146		O-RING	2	
147		BACK-UP RING	2	
155(156-157)	3361850422	SEAL KIT	1	
156		O-RING	2	
157		BACK-UP RING	2	
164	3360314364	O-RING	2	
165	3360328046	BACK-UP RING	2	
182	3360478426	THREADED PLUG	1	
183	3360175125	O-RING	1	
185	3363123253	SEAL	1	
186	3360314790	O-RING	1	
187	3363126739	BACK-UP RING	1	
196	3363121175	SEAL	1	
197	3363121176	BACK-UP RING	2	
198	3360314453	O-RING	1	
203	3363103419	SEAL	1	
204	3360314455	O-RING	16	
205	3360314368	O-RING	6	A
206	3360478097	O-RING	12	
207	3361031988	O-RING	2	
290(291-292)	3362268907	SEAL KIT	2	
291		SEAL	1	
292		BACK-UP RING	1	
305	3363083672	WIPER	1	
370	3360106819	LOCK PIN	1	
390(391-392)	3362268905	SEAL KIT	2	
391		SEAL	1	
392		BACK-UP RING	1	
407	3360106818	LOCK PIN	1	
411	3360314453	O-RING	3	

Refer to the DocMine web page for most up-to-date information. The printed information might be outdated.

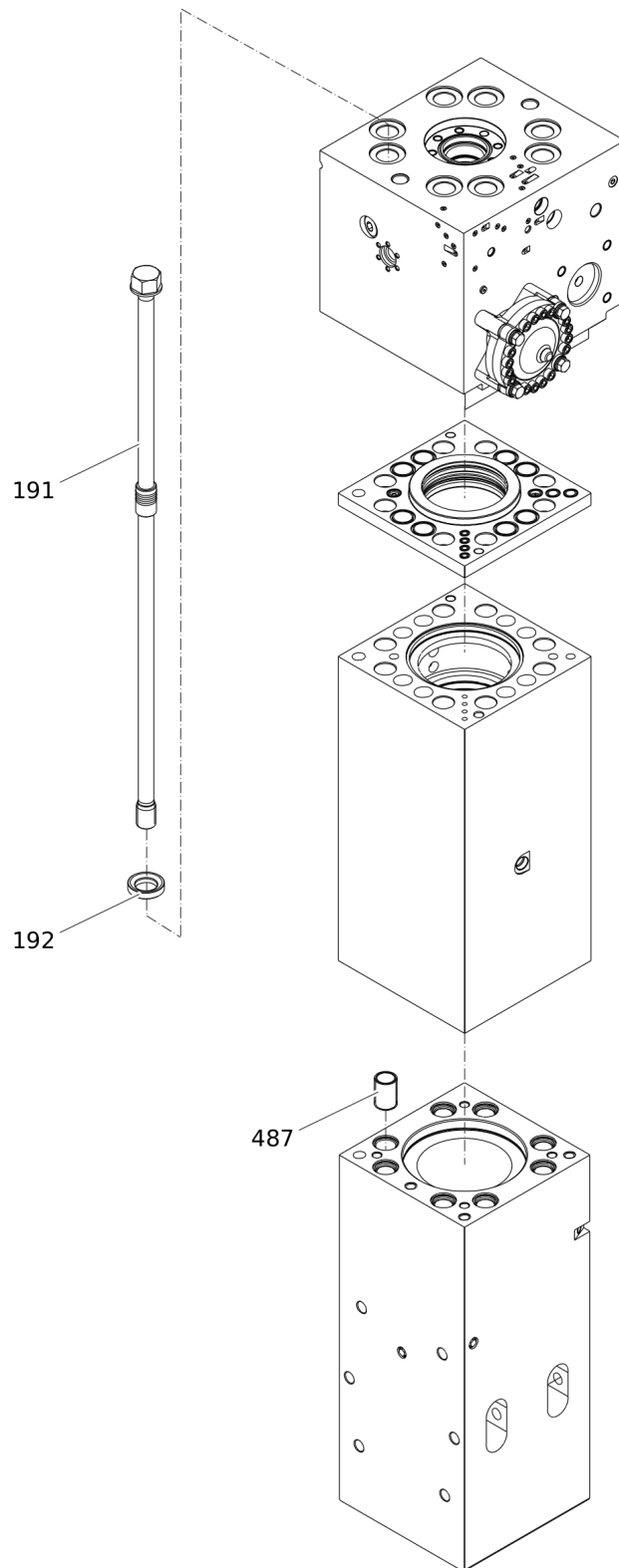
Thu Feb 08 06:47:50 UTC 2024

## Service, repair and wear part kits Plastic parts kit



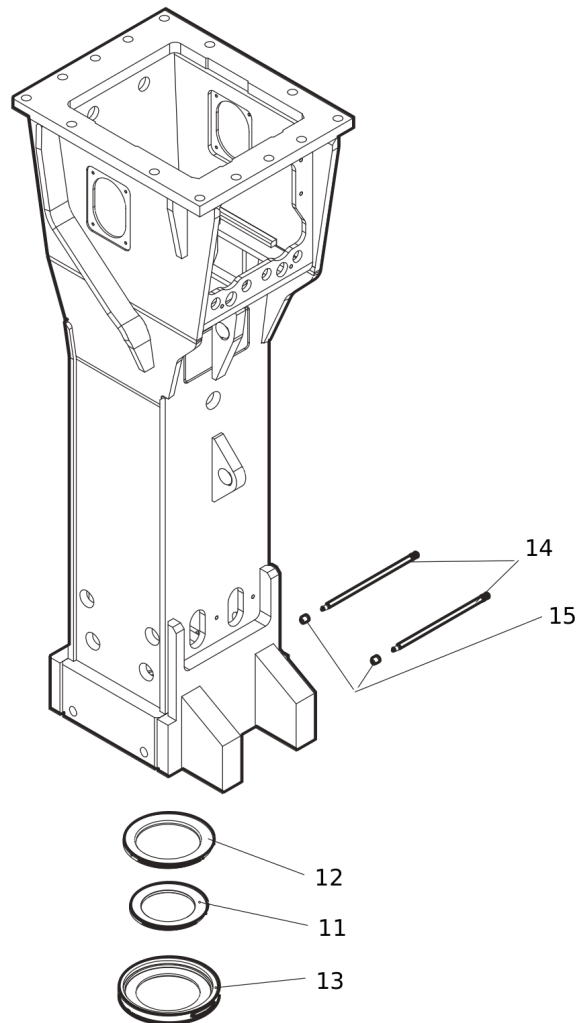
Item	Part No.	Name	Qty	L
KIT	3363089517	PLASTIC PARTS KIT	1	
2	3362260549	ELASTIC PAD	1	
3	3362260545	SHOCK ABSORBER	2	
4	3362269697	GUIDE PLATE	4	
5	3362262667	GUIDE PLATE	2	
6	3362262665	GUIDE PLATE	2	
7	3363093383	PLATE	1	

## Service, repair and wear part kits Tensioning bolt kit



Item	Part No.	Name	Qty	L
KIT	3363094355	TENSIONING BOLT KIT	1	
191		TENSIONING BOLT	4	
192	3363093655	WASHER	4	
487	3363085499	THREADED INSERT	4	

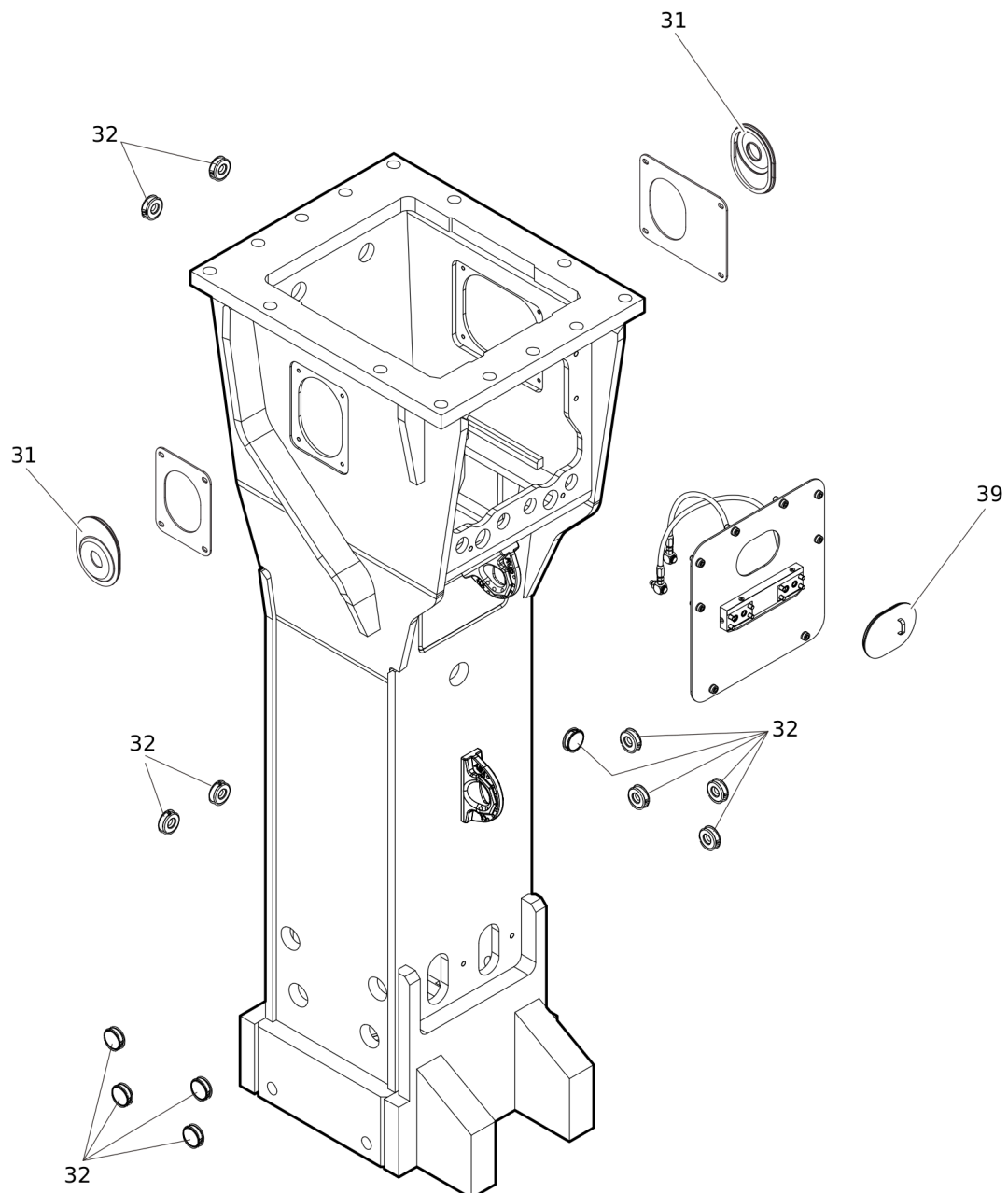
## Service, repair and wear part kits DustProtector kit





Item	Part No.	Name	Qty	L
KIT	3363094391	DUSTPROTECTOR KIT	1	
11	3363070666	FLOATING RING (tribolid)	1	
12	3363035643	COUNTER RING	1	
13	3363035639	GUIDE RING	1	
14	3363070645	BOLT	2	
15	3361854363	LOCKING BUSH	2	

## Service, repair and wear part kits Noise protection kit

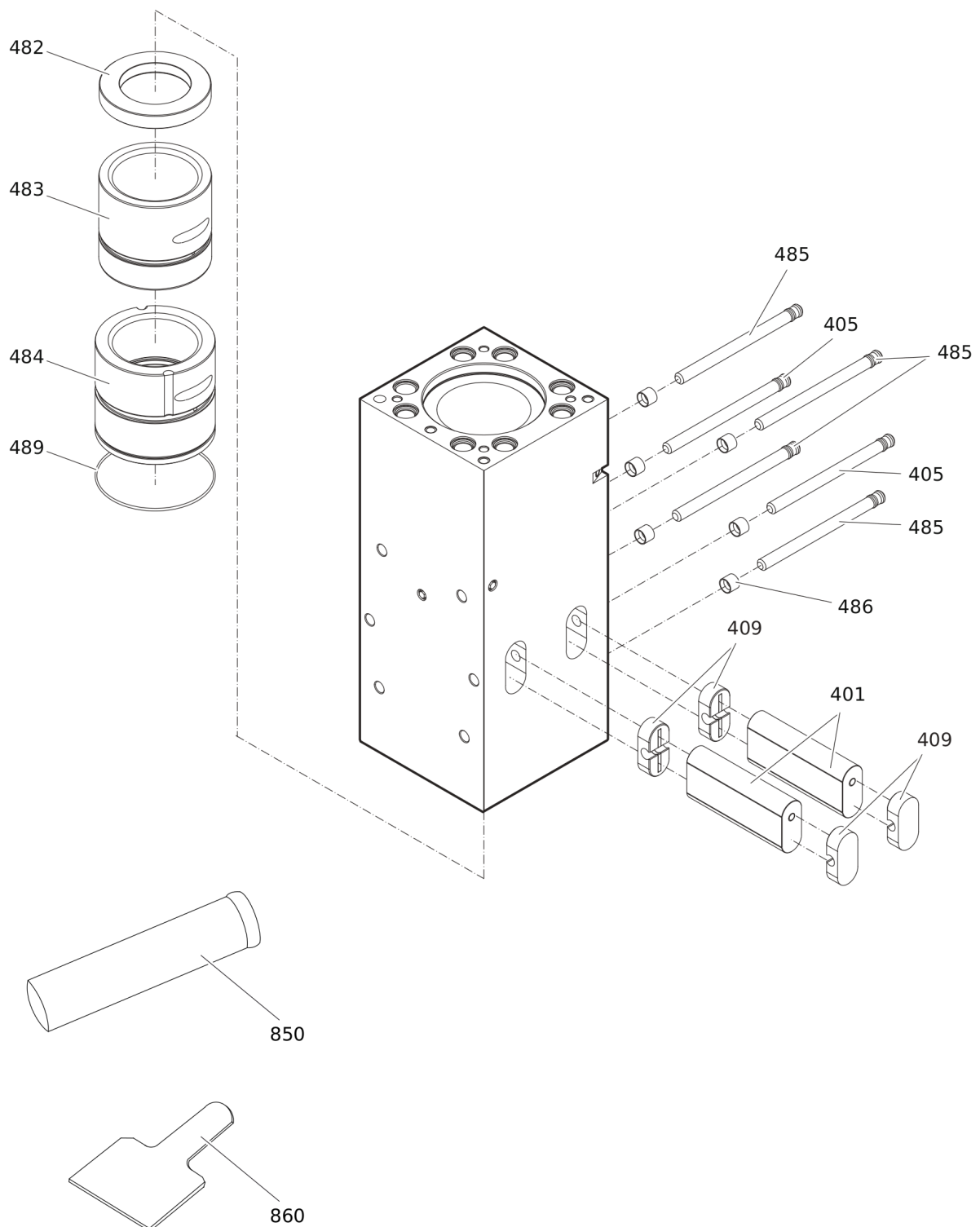


Refer to the DocMine web page for most up-to-date information. The printed information might be outdated.

Thu Feb 08 06:47:50 UTC 2024

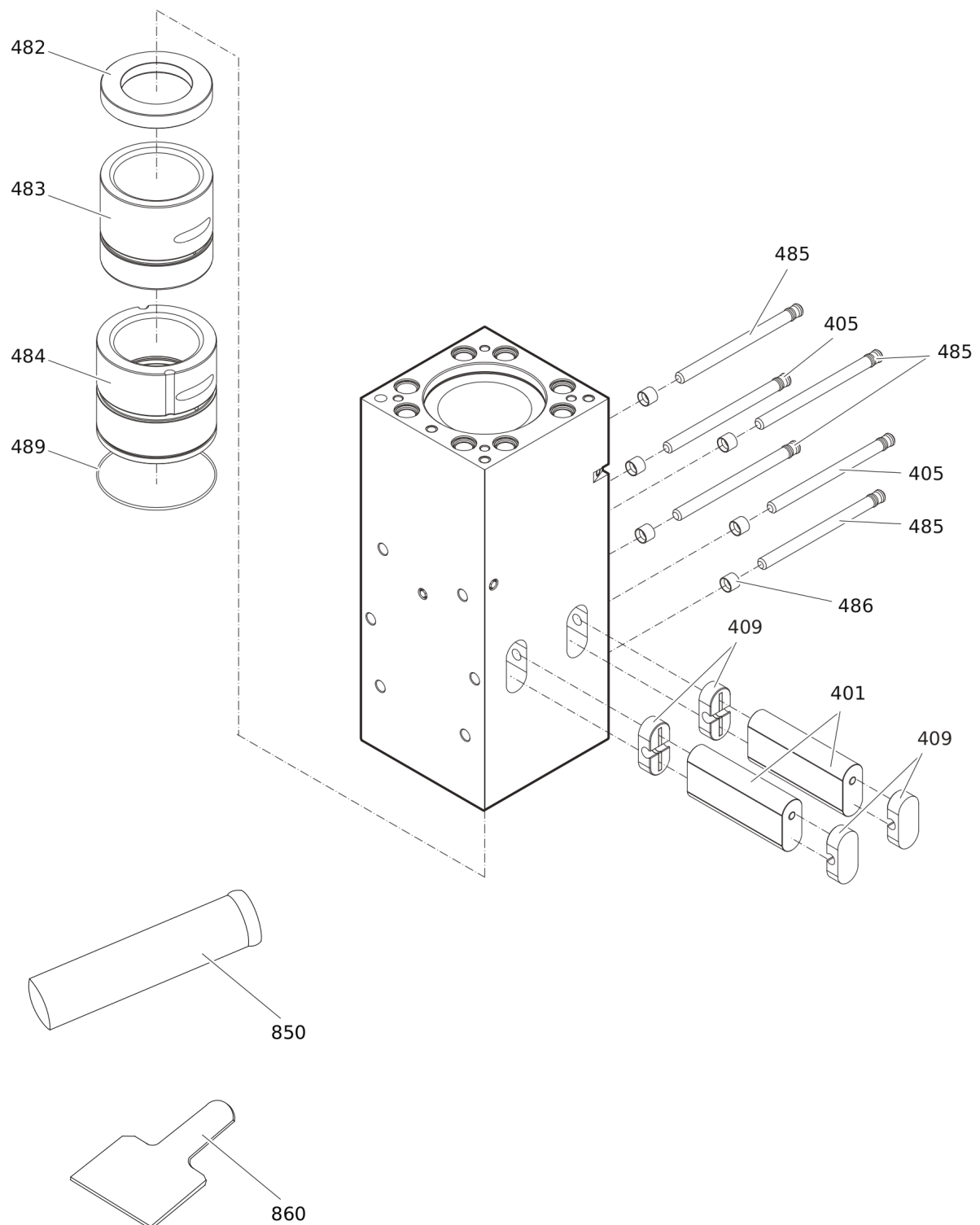
Item	Part No.	Name	Qty	L
KIT	3363119327	NOISE PROTECTION KIT	1	
31	3363031181	COVER	2	
32	3363086017	PLUG	13	
39	3363092697	COVER	1	

## Service, repair and wear part kits Lower breaker part kit (bronze)



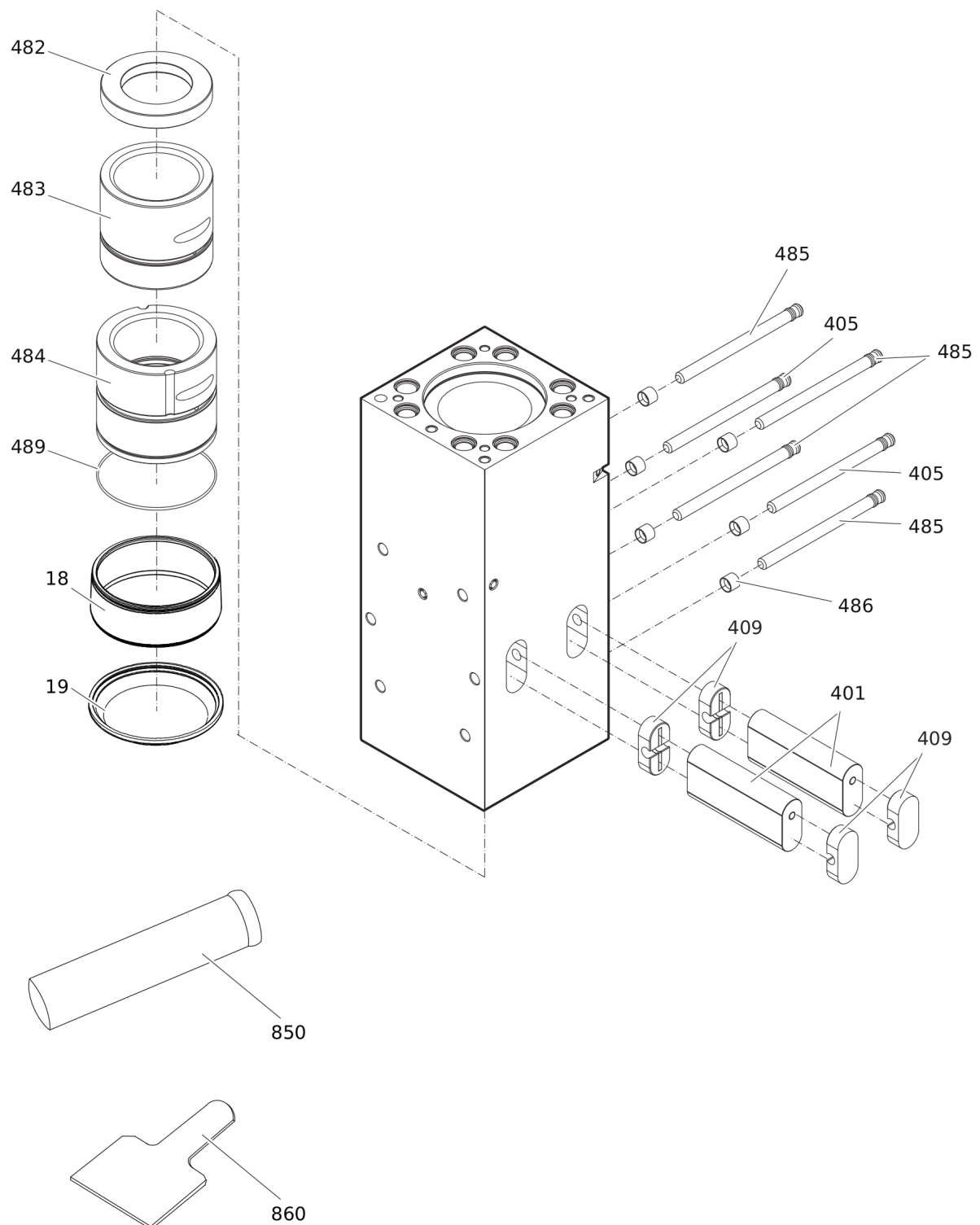
Item	Part No.	Name	Qty	L
KIT	3363094381	LOWER BREAKER PART KIT (bronze)	1	
401	3362260429	RETAINER BAR	2	
405	3362260431	BOLT	2	
409	3362260435	PLUG	4	
482	3363069085	IMPACT RING	1	
483	3363069507	WEAR BUSH	1	
484	3363088513	WEAR BUSH (bronze)	1	
485	3362260431	BOLT	4	
486	3362260433	LOCKING BUSH	6	
489	3361031988	O-RING	1	
850		BIO CHISEL PASTE CARTRIDGE, 1 x 400 g (0.88 lbs)	1	
860	3362235295	TEST GAUGE lower wear bush	1	

## Service, repair and wear part kits Lower breaker part kit (steel)



Item	Part No.	Name	Qty	L
KIT	3363103412	LOWER BREAKER PART KIT (steel)	1	
401	3362260429	RETAINER BAR	2	
405	3362260431	BOLT	2	
409	3362260435	PLUG	4	
482	3363069085	IMPACT RING	1	
483	3363069507	WEAR BUSH	1	
484	3363088657	WEAR BUSH (steel)	1	
485	3362260431	BOLT	4	
486	3362260433	LOCKING BUSH	6	
489	3361031988	O-RING	1	
850		BIO CHISEL PASTE CARTRIDGE, 1 x 400 g (0.88 lbs)	1	
860	3362235295	TEST GAUGE lower wear bush	1	

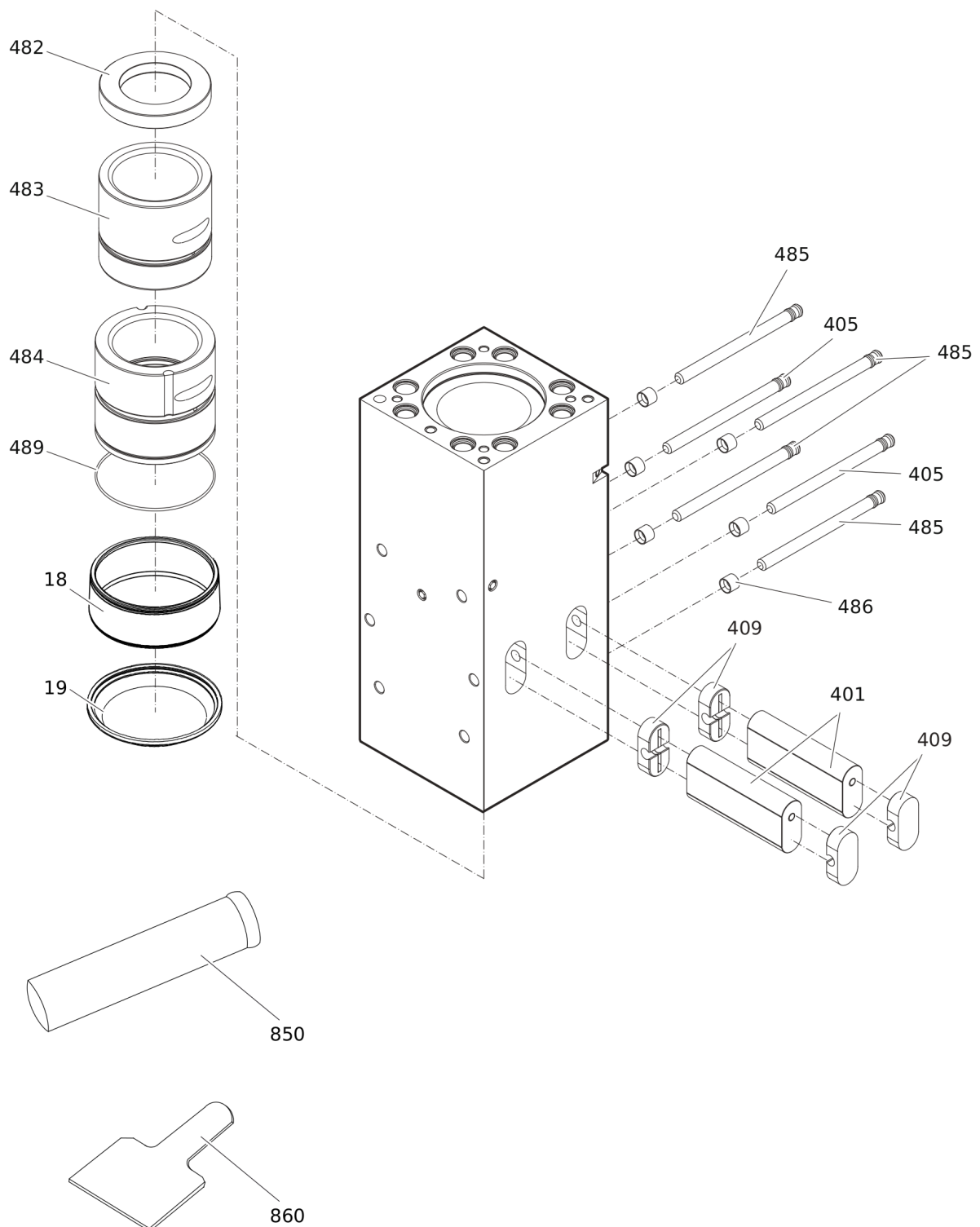
## Service, repair and wear part kits Lower breaker part kit (bronze) DustProtector





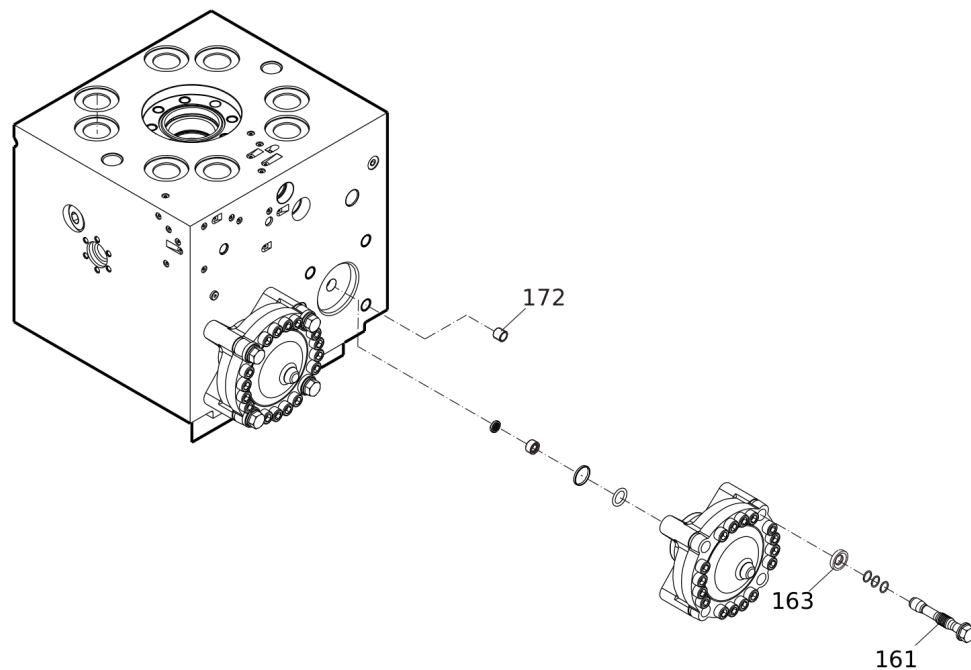
Item	Part No.	Name	Qty	L
KIT	3363094382	LOWER BREAKER PART KIT (bronze) for DustProtector version	1	
18	3363088649	BASE FOR WIPER	1	
19	3363034589	WIPER	1	
401	3362260429	RETAINER BAR	2	
405	3362260431	BOLT	2	
409	3362260435	PLUG	4	
482	3363069085	IMPACT RING	1	
483	3363069507	WEAR BUSH	1	
484	3363088513	WEAR BUSH (bronze)	1	
485	3362260431	BOLT	4	
486	3362260433	LOCKING BUSH	6	
489	3361031988	O-RING	1	
850		BIO CHISEL PASTE CARTRIDGE, 1 x 400 g (0.88 lbs)	1	
860	3362235295	TEST GAUGE lower wear bush	1	

## Service, repair and wear part kits Lower breaker part kit (steel) DustProtector



Item	Part No.	Name	Qty	L
KIT	3363103413	LOWER BREAKER PART KIT (steel) for DustProtector version	1	
18	3363088649	BASE FOR WIPER	1	
19	3363034589	WIPER	1	
401	3362260429	RETAINER BAR	2	
405	3362260431	BOLT	2	
409	3362260435	PLUG	4	
482	3363069085	IMPACT RING	1	
483	3363069507	WEAR BUSH	1	
484	3363088657	WEAR BUSH (steel)	1	
485	3362260431	BOLT	4	
486	3362260433	LOCKING BUSH	6	
489	3361031988	O-RING	1	
850		BIO CHISEL PASTE CARTRIDGE, 1 x 400 g (0.88 lbs)	1	
860	3362235295	TEST GAUGE lower wear bush	1	

## Service, repair and wear part kits Fastening screw kit



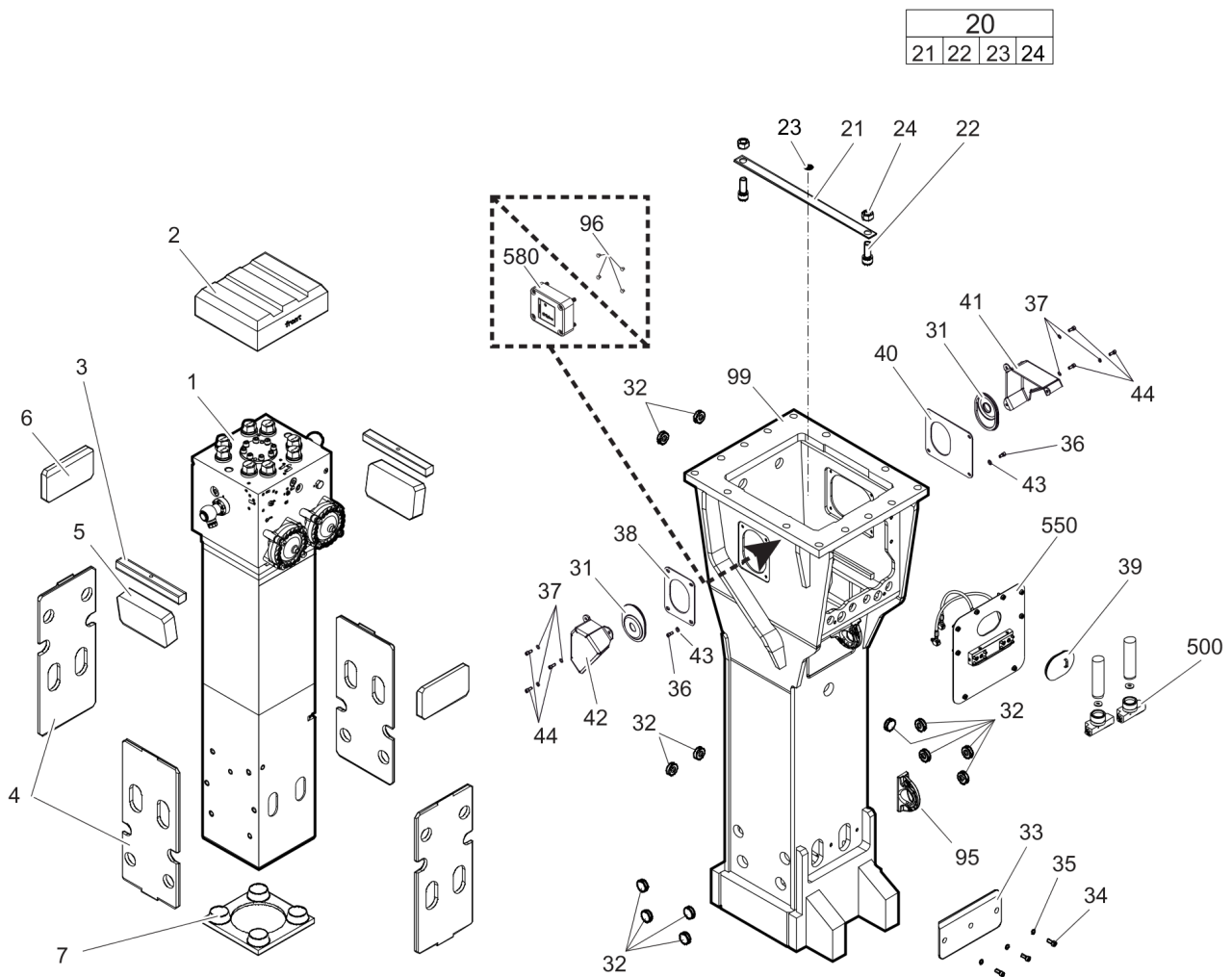
Item	Part No.	Name	Qty	L
KIT	3363103487	FASTENING SCREW KIT	1	
161	3363100047	Fastening screw	4	
163	3363100049	WASHER	4	
172	3361031546	THREADED INSERT	4	

Service, repair and wear part kits Accumulator repair kit

NO EXPLODED VIEW  
AVAILABLE  
FOR THIS BOM

Item	Part No.	Name	Qty	L
KIT	3363089850	ACCUMULATOR REPAIR KIT	1	
-	3361329022	DIAPHRAGM	1	
-	3360332259	FILLING SCREW	1	
-	3360314460	O-RING	1	
-	3361335025	PROTECTIVE CAP	1	
-	3360314364	O-RING	1	
-	3360328046	BACK-UP RING	1	

## Mechanical Hydraulic breaker HB 7000



Refer to the DocMine web page for most up-to-date information. The printed information might be outdated.

Thu Feb 08 06:47:50 UTC 2024



Item	Part No.	Name	Qty	L
1		PERCUSSION UNIT	1	A
2	3362260549	ELASTIC PAD	1	
3	3362260545	SHOCK ABSORBER	2	
4	3362269697	GUIDE PLATE	4	
5	3362262667	GUIDE PLATE	2	
6	3362262665	GUIDE PLATE	2	
7	3363093383	PLATE	1	
20(21-24)	3363083677	TRANSPORT SAFETY DEVICE complete	1	
21		TRANSPORT SAFETY DEVICE	1	
22	3360114151	ALLEN SCREW	2	
23	3363091872	LABEL TRANSPORT SAFETY DEVICE	1	
24	3360103255	NUT	2	
31	3363031181	COVER	2	
32	3363086017	PLUG	13	
33	3363098852	PLATE	1	
34	3360103768	ALLEN SCREW	3	
35	3361333703	PAIR OF LOCK WASHERS	3	
36	3360103750	ALLEN SCREW	2	
37	3361850596	PAIR OF LOCK WASHERS	6	
38	3363098838	PLATE	1	
39	3363092697	COVER	1	
40	3363106729	PLATE	1	
41	3363111477	SWIVEL JOINT COVER	1	
42	3363111461	SWIVEL JOINT COVER	1	
43	3363111296	PAIR OF LOCK WASHERS	2	
44	3360103751	ALLEN SCREW	6	
95	3363111996	LIFTING EYE	2	B
96	3315439145	PROTECTIVE PLUG HATCON	4	C
99	3363106730	BREAKER BOX	1	D
500	3363067123	AUTOMATIC LUBRICATION SYSTEM	2	
550		CONNECTING KIT for automatic lubrication system	1	A
580		HATCON	1	E

Comments for Page: Hydraulic breaker HB 7000

(L)OCAL REMARKS

A | see separate chapter

B | professional welding process necessary

C | only for hydraulic breakers without HATCON

Refer to the DocMine web page for most up-to-date information. The printed information might be outdated.

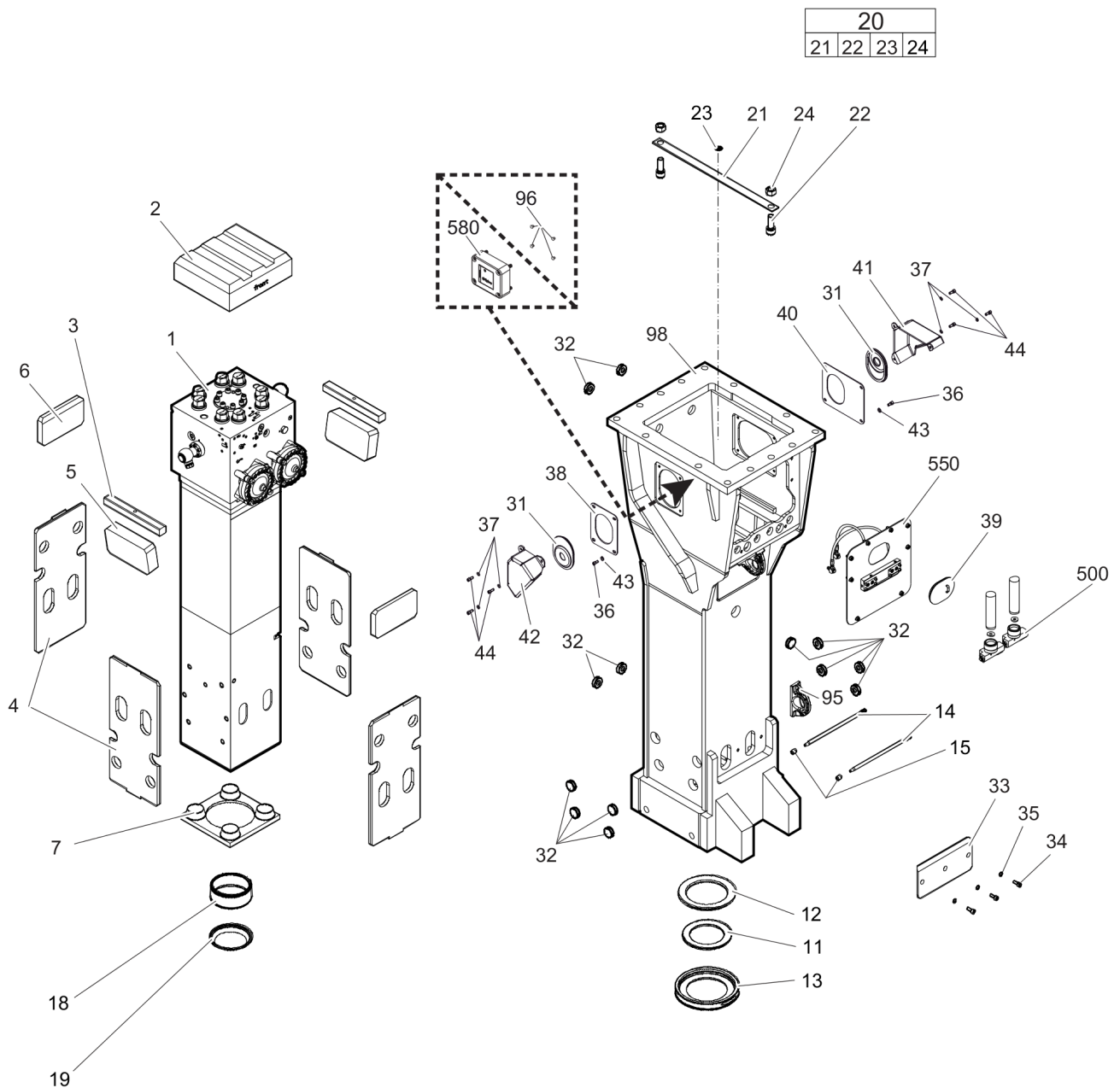
Thu Feb 08 06:47:51 UTC 2024

D | with item 95 and 96

E | only for hydraulic breakers with HATCON / see separate chapter

This page intentionally left blank

## Mechanical Hydraulic breaker HB 7000 DP



Refer to the DocMine web page for most up-to-date information. The printed information might be outdated.

Thu Feb 08 06:47:51 UTC 2024

Item	Part No.	Name	Qty	L
1		PERCUSSION UNIT	1	A
2	3362260549	ELASTIC PAD	1	
3	3362260545	SHOCK ABSORBER	2	
4	3362269697	GUIDE PLATE	4	
5	3362262667	GUIDE PLATE	2	
6	3362262665	GUIDE PLATE	2	
7	3363093383	PLATE	1	
11	3363070666	FLOATING RING (tribolid)	1	B
12	3363035643	COUNTER RING	1	
13	3363035639	GUIDE RING	1	
14	3363070645	BOLT	2	
15	3361854363	LOCKING BUSH	2	
18	3363088649	BASE FOR WIPER	1	
19	3363034589	WIPER	1	
20(21-24)	3363083677	TRANSPORT SAFETY DEVICE complete	1	
21		TRANSPORT SAFETY DEVICE	1	
22	3360114151	ALLEN SCREW	2	
23	3363091872	LABEL TRANSPORT SAFETY DEVICE	1	
24	3360103255	NUT	2	
31	3363031181	COVER	2	
32	3363086017	PLUG	13	
33	3363098852	PLATE	1	
34	3360103768	ALLEN SCREW	3	
35	3361333703	PAIR OF LOCK WASHERS	3	
36	3360103750	ALLEN SCREW	2	
37	3361850596	PAIR OF LOCK WASHERS	6	
38	3363098838	PLATE	1	
39	3363092697	COVER	1	
40	3363106729	PLATE	1	
41	3363111477	SWIVEL JOINT COVER	1	
42	3363111461	SWIVEL JOINT COVER	1	
43	3363111296	PAIR OF LOCK WASHERS	2	
44	3360103751	ALLEN SCREW	6	
95	3363111996	LIFTING EYE	2	C
96	3315439145	PROTECTIVE PLUG HATCON	4	D
98	3363106726	BREAKER BOX	1	E
500	3363067123	AUTOMATIC LUBRICATION SYSTEM	2	

Refer to the DocMine web page for most up-to-date information. The printed information might be outdated.

Thu Feb 08 06:47:51 UTC 2024

Item	Part No.	Name	Qty	L
550		CONNECTING KIT for automatic lubrication system	1	A
580		HATCON	1	F

Comments for Page: Hydraulic breaker HB 7000 DP

(L)OCAL REMARKS

A | see separte chapter

B | steel see chapter Optional parts

C | professional welding process necessary

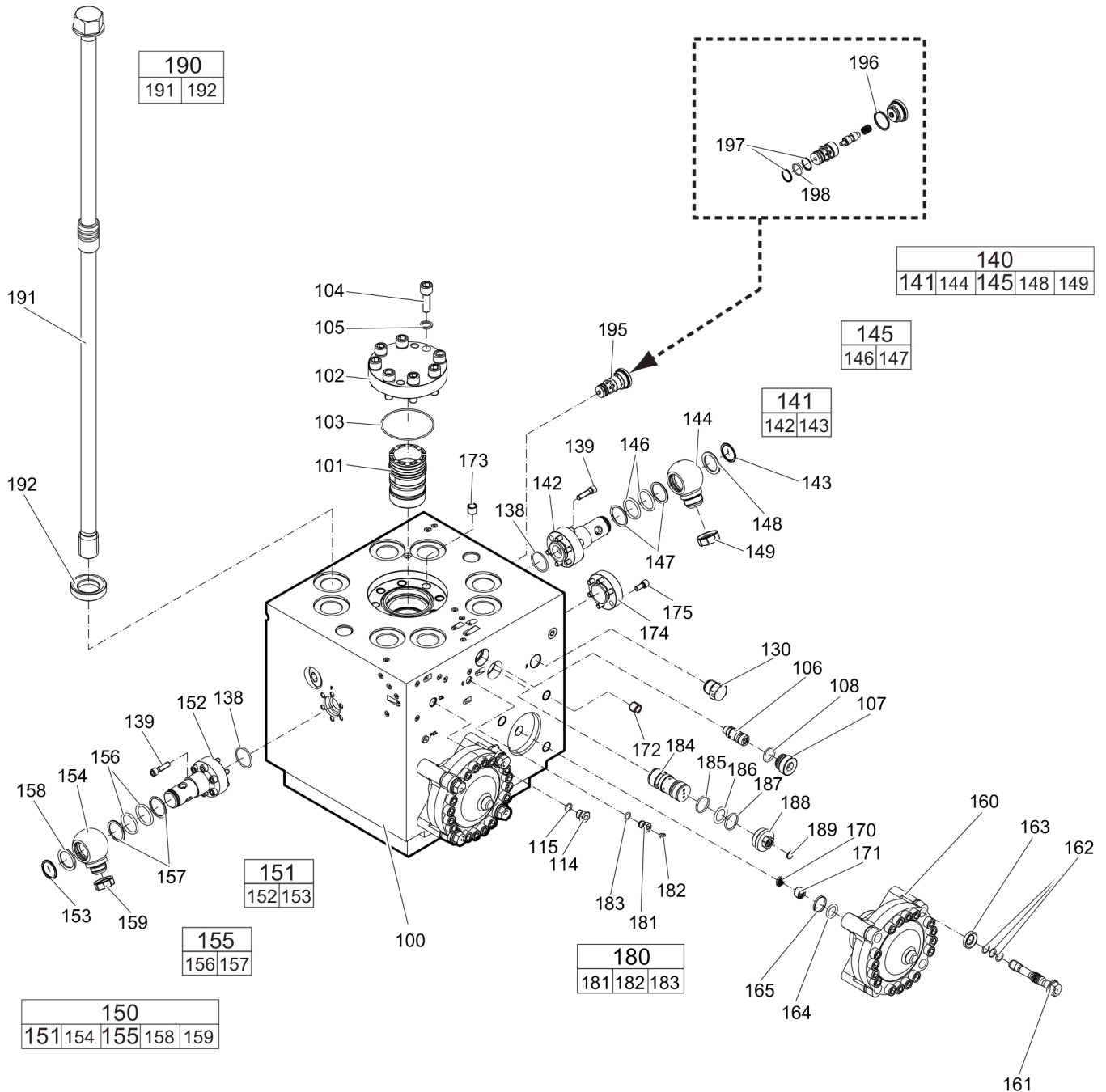
D | only for hydraulic breakers without HATCON

E | with item 95 and 96

F | only for hydraulic breakers with HATCON / see separate chapter

This page intentionally left blank

## Mechanical Percussion unit part 1: cylinder cover



Refer to the DocMine web page for most up-to-date information. The printed information might be outdated.

Thu Feb 08 06:47:52 UTC 2024



Item	Part No.	Name	Qty	L
100	3363121010	CYLINDER COVER	1	A
101	3363086519	MAIN CONTROL VALVE	1	
102	3363086515	COVER	1	
103	3360314376	O-RING	1	
104	3360026784	ALLEN SCREW	8	
105	3361850748	PAIR OF LOCK WASHERS	8	
106	3363035453	VALVE	1	B
107	3363035425	THREADED PLUG	1	
108	3360314370	O-RING	1	
114	3361854657	CONNECTING SCREW	1	
115	3360478171	O-RING	1	
130	3361854511	NON-RETURN VALVE	1	
138	3360314373	O-RING	2	
139	3360026513	ALLEN SCREW	12	
140(141-149)	3363116889	SWIVEL JOINT complete	1	
141(142-143)	3363116887	ADAPTER complete	1	
142		ADAPTER	1	
143	3363116062	SNAPRING	1	
144	3363086569	ADAPTER	1	
145(146-147)	3361850422	SEAL KIT	1	
146		O-RING	2	
147		BACK-UP RING	2	
148	3361356645	DISK	1	
149	3363083749	CAP	1	
150(151-159)	3363116888	SWIVEL JOINT complete	1	
151(152-153)	3363116887	ADAPTER complete	1	
152		ADAPTER	1	
153	3363116062	SNAPRING	1	
154	3361356643	ADAPTER	1	
155(156-157)	3361850422	SEAL KIT	1	
156		O-RING	2	
157		BACK-UP RING	2	
158	3361356645	DISK	1	
159	3361353489	CAP	1	
160	3363094981	HP-ACCUMULATOR	2	
161	3363113101	FASTENING SCREW	8	C
162	3363114730	SERVICE KIT O-RINGS	2	D

Refer to the DocMine web page for most up-to-date information. The printed information might be outdated.

Thu Feb 08 06:47:52 UTC 2024

Item	Part No.	Name	Qty	L
163	3363100049	WASHER	8	
164	3360314364	O-RING	2	
165	3360328046	BACK-UP RING	2	
170	3361844113	STRAINER DISK	2	
171	3361844115	THREADED PLUG	2	
172	3361031546	THREADED INSERT	8	
173	3361031529	THREADED INSERT	8	
174	3363104787	FLANGE	1	
175	3360103750	ALLEN SCREW	6	
180(181-183)	3363087286	FILLING VALVE, complete	1	
181		FILLING VALVE	1	
182	3360478426	THREADED PLUG	1	
183	3360175125	O-RING	1	
184	3363126207	SAFETY VALVE	1	E
185	3363123253	SEAL	1	
186	3360314790	O-RING	1	
187	3363126739	BACK-UP RING	1	
188	3363126740	THREADED PLUG	1	F
189	3363087087	CAP	1	
190(191-192)	3363085625	TENSIONING BOLT complete	8	
191		TENSIONING BOLT	1	
192	3363093655	WASHER	1	
195	3363120683	VALVE	1	G
196	3363121175	SEAL	1	
197	3363121176	BACK-UP RING	2	
198	3360314453	O-RING	1	

Comments for Page: Percussion unit part 1: cylinder cover

(L)OCAL REMARKS

A | with items 170 - 175

B | AutoControl

C | each fastening screw with 3 o-rings item 162

D | 12 o-rings for all 4 fastening screws item 161

E | PowerAdapt with item 185

Only in exchange for the part to be replaced. Consult the authorized Customer Center/Dealer in your area.

F | with item 186,187,189

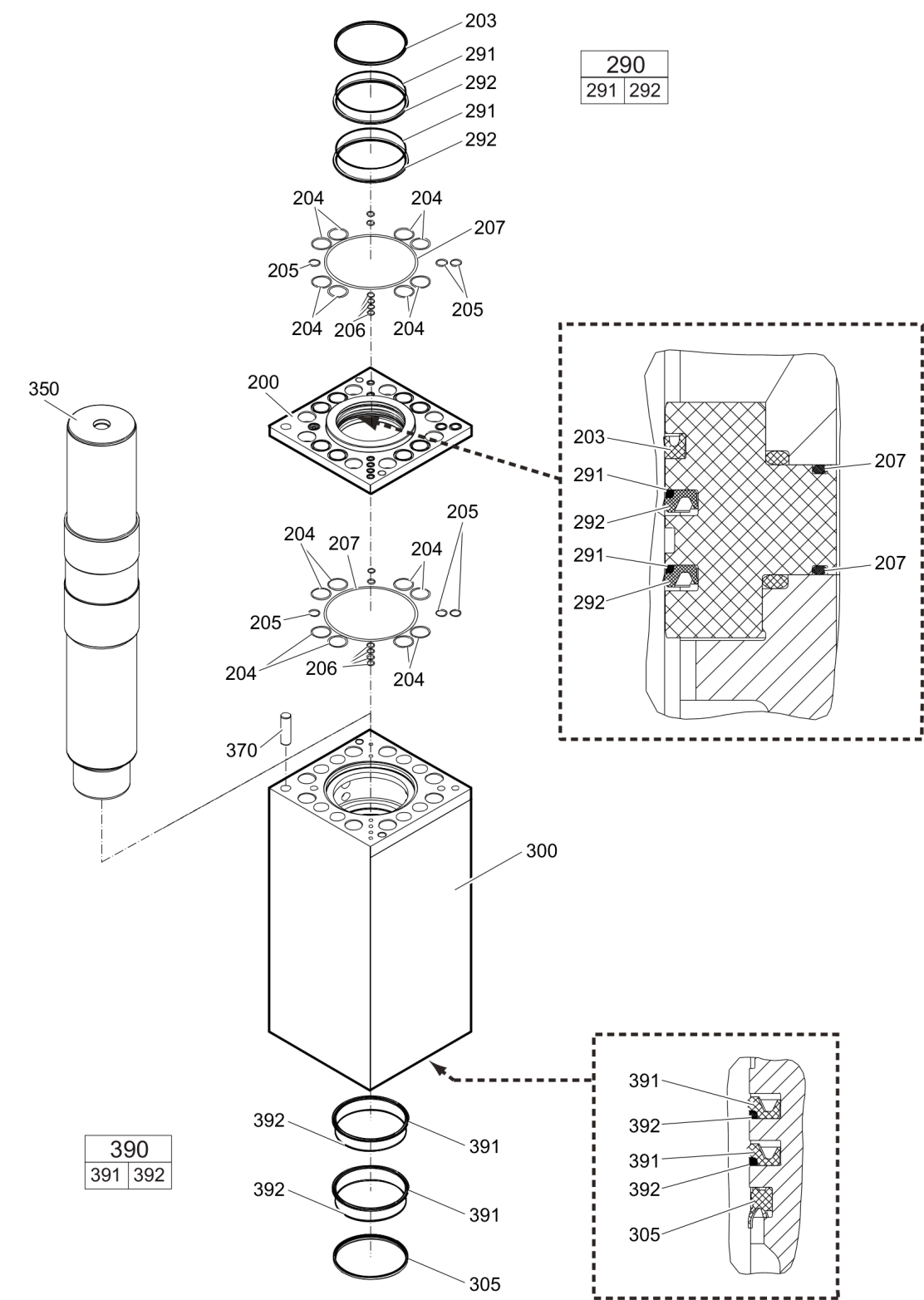
G | IPS - Intelligent Protection System with item 196 - 198

Refer to the DocMine web page for most up-to-date information. The printed information might be outdated.

Thu Feb 08 06:47:53 UTC 2024

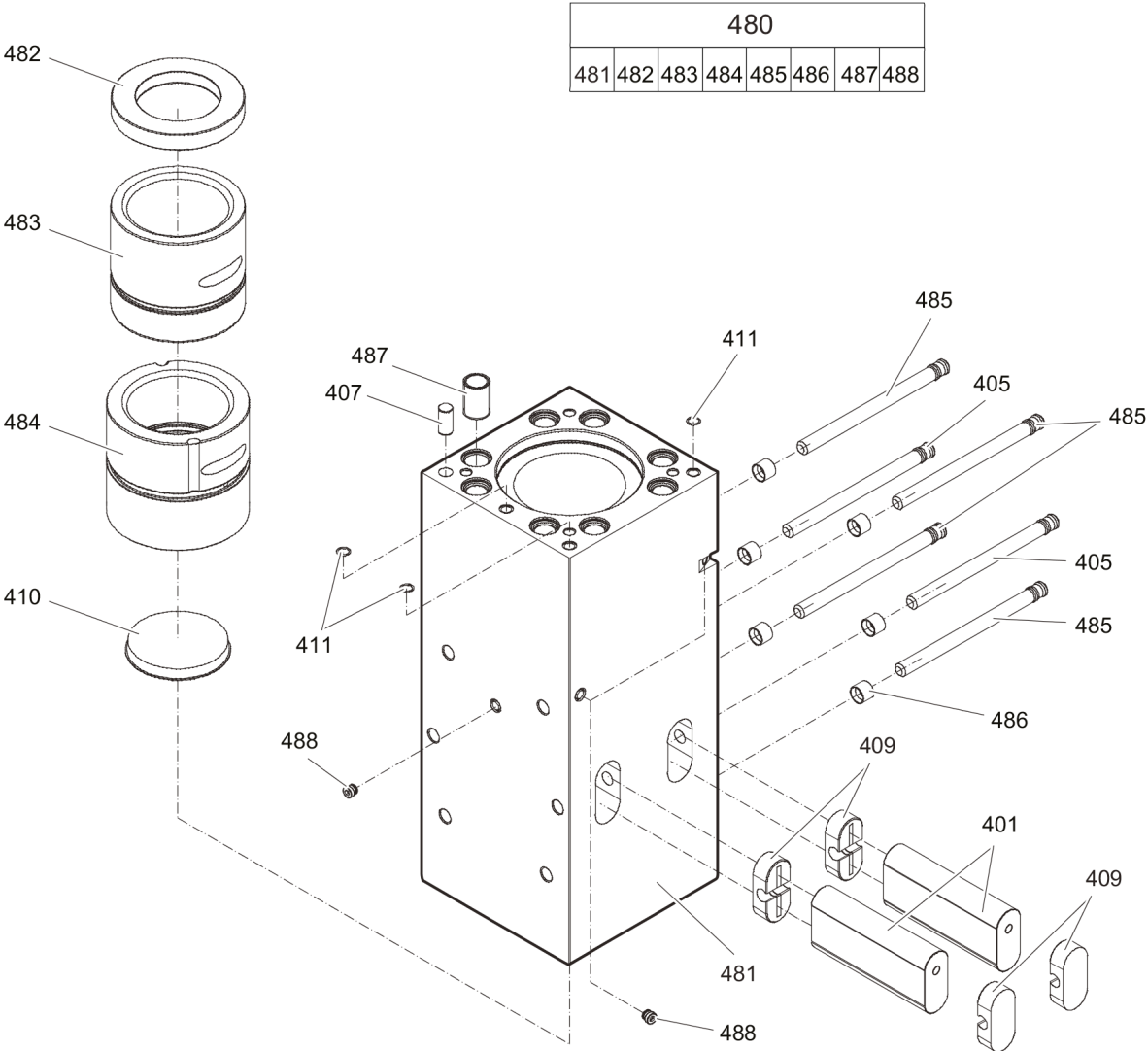
This page intentionally left blank

Mechanical Percussion unit part 2: cylinder



Item	Part No.	Name	Qty	L
200	3363120916	SEAL FLANGE	1	
203	3363103419	SEAL	1	
204	3360314455	O-RING	16	
205	3360314368	O-RING	6	
206	3360478097	O-RING	12	
207	3361031988	O-RING	2	
290(291-292)	3362268907	SEAL KIT	2	
291		BACK-UP RING	1	
292		SEAL	1	
300	3363121022	CYLINDER	1	
305	3363083672	WIPER	1	
350	3363087006	PERCUSSION PISTON	1	
370	3360106819	LOCK PIN	1	
390(391-392)	3362268905	SEAL KIT	2	
391		SEAL	1	
392		BACK-UP RING	1	

Mechanical Percussion unit part 3: lower breaker part (steel)



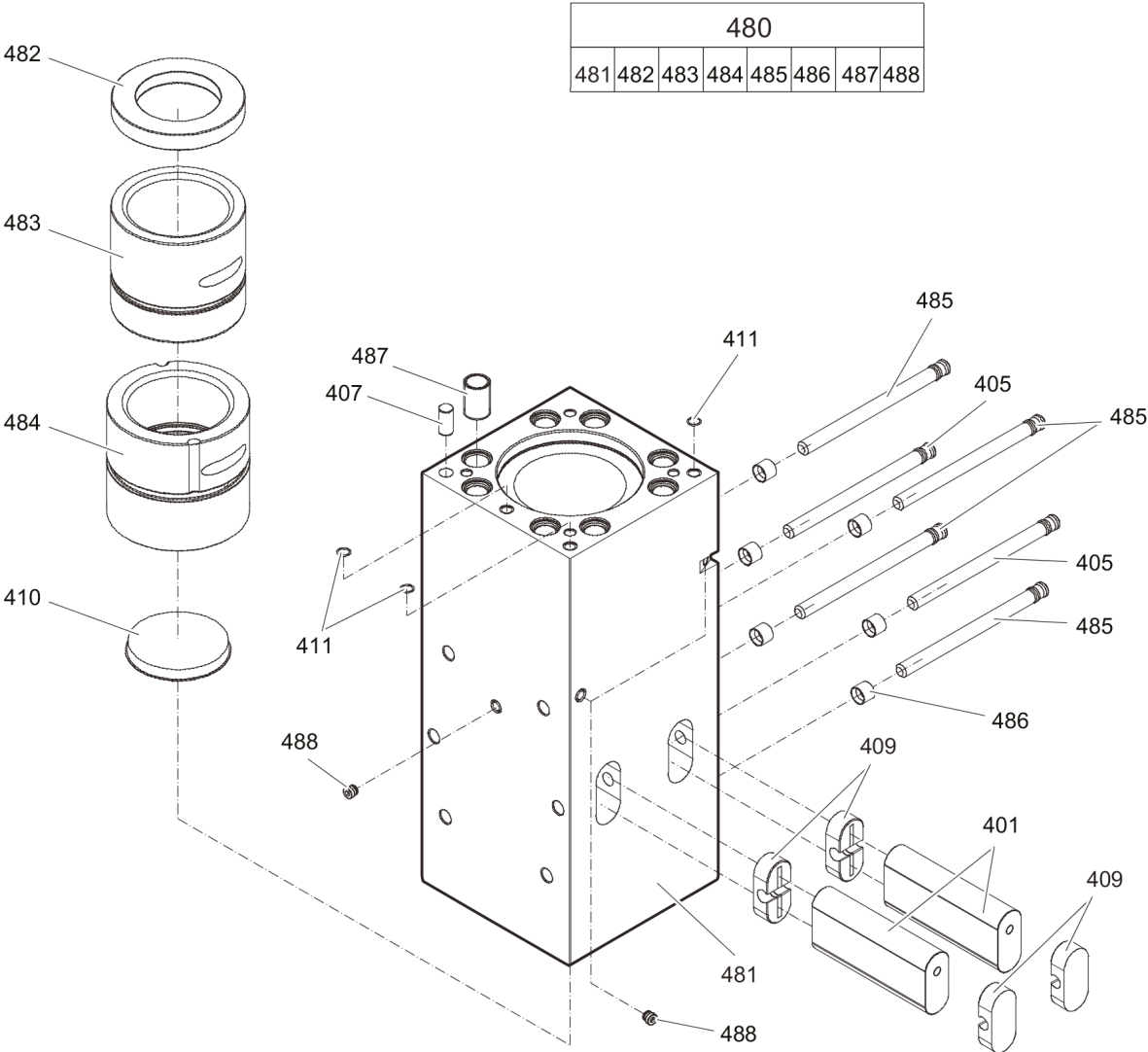
Item	Part No.	Name	Qty	L
401	3362260429	RETAINER BAR	2	
405	3362260431	BOLT	2	
407	3360106818	LOCK PIN	1	
409	3362260435	PLUG	4	
410	3361855719	PROTECTIVE CAP	1	
411	3360314453	O-RING	3	
480(481-488)	3363089500	LOWER BREAKER PART complete with lower wear bush steel	1	A
481		LOWER BREAKER PART	1	
482	3363069085	IMPACT RING	1	
483	3363069507	WEAR BUSH	1	
484	3363088657	WEAR BUSH (steel)	1	
485	3362260431	BOLT	4	
486	3362260433	LOCKING BUSH	6	
487	3363085499	THREADED INSERT	8	
488	3363086301	PLUG	3	

Comments for Page: Percussion unit part 3: lower breaker part (steel)

#### (L)OCAL REMARKS

A | Note: When ordering a lower breaker part for DustProtector version it is imperative to order additionally the base for wiper (item 18) and the wiper (item 19).

Mechanical Percussion unit part 3: lower breaker part (bronze)





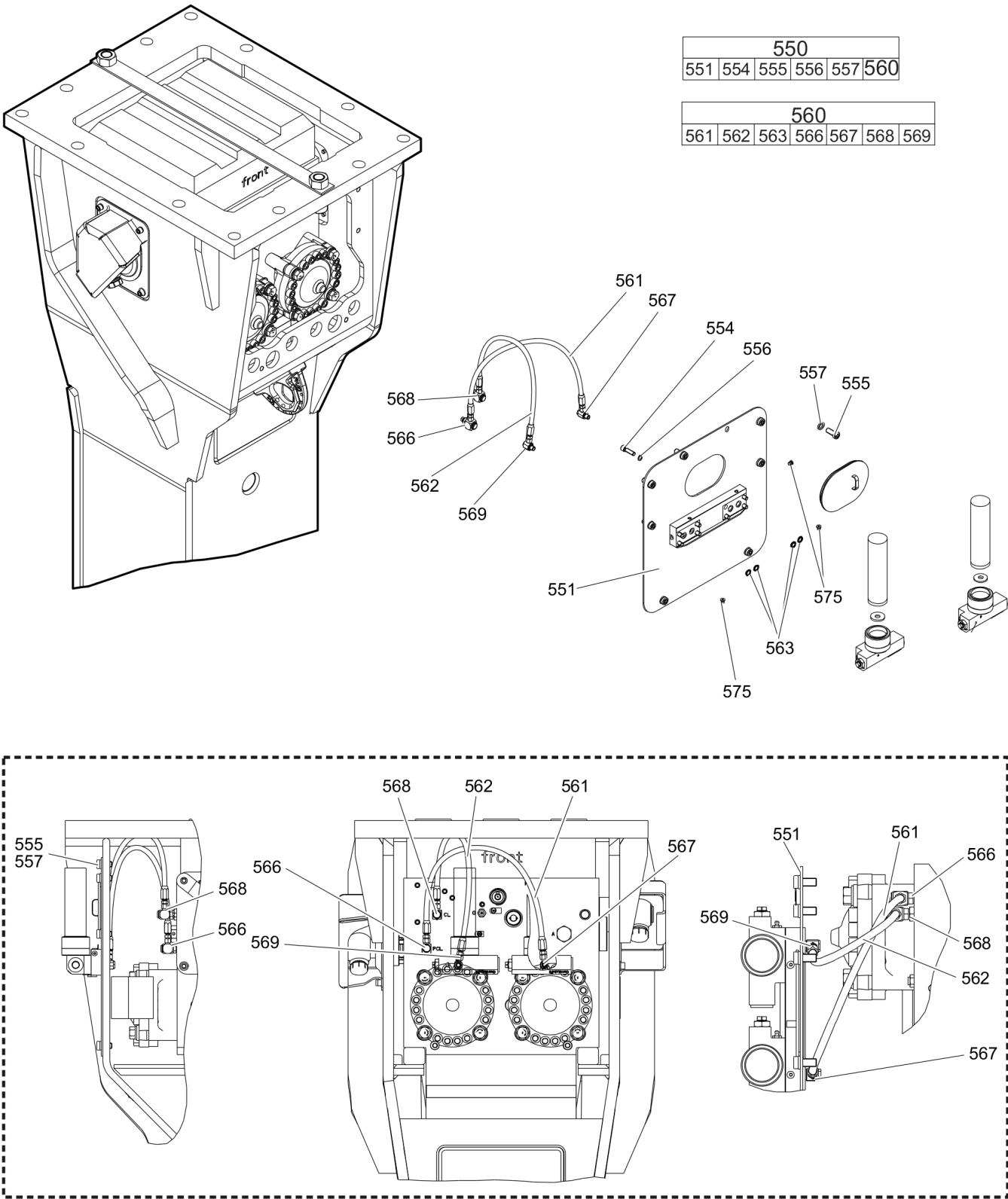
Item	Part No.	Name	Qty	L
401	3362260429	RETAINER BAR	2	
405	3362260431	BOLT	2	
407	3360106818	LOCK PIN	1	
409	3362260435	PLUG	4	
410	3361855719	PROTECTIVE CAP	1	
411	3360314453	O-RING	3	
480(481-488)	3363116925	LOWER BREAKER PART complete with lower wear bush bronze	1	A
481		LOWER BREAKER PART	1	
482	3363069085	IMPACT RING	1	
483	3363069507	WEAR BUSH	1	
484	3363088513	WEAR BUSH (bronze)	1	
485	3362260431	BOLT	4	
486	3362260433	LOCKING BUSH	6	
487	3363085499	THREADED INSERT	8	
488	3363086301	PLUG	3	

Comments for Page: Percussion unit part 3: lower breaker part (bronze)

#### (L)OCAL REMARKS

A | Note: When ordering a lower breaker part for DustProtector version it is imperative to order additionally the base for wiper (item 18) and the wiper (item 19).

Mechanical Connecting kit for automatic lubrication system



Item	Part No.	Name	Qty	L
550(551-560)		CONNECTING KIT for automatic lubrication system	1	
551	3363118844	SUPPORT	1	A
554	3360026512	ALLEN SCREW	8	B
555	3360100796	ALLEN SCREW	8	
556	3361850596	PAIR OF LOCK WASHERS	8	
557	3361333703	PAIR OF LOCK WASHERS	8	
560(561-569)	3363119350	CONNECTING KIT for automatic lubrication system	1	C
561	3363083877	HYDRAULIC HOSE	1	D
562	3363087583	HYDRAULIC HOSE	1	E
563	3362267584	SEAL - Merkel Stirromatic Sealing	4	
566	3363087185	FITTING	1	B
567	3363066234	FITTING	1	B
568	3363087186	FITTING	1	B
569	3363066233	FITTING	1	B
575	3360107879	PLUG	3	
KIT	3363091732	SEAL KIT for swivel joint for automatic lubrication system	1	

Comments for Page: Connecting kit for automatic lubrication system

(L)OCAL REMARKS

A | with item 575

B | secure with Loctite 243

C | without fastening elements

D | Oil line

secure with Loctite 243

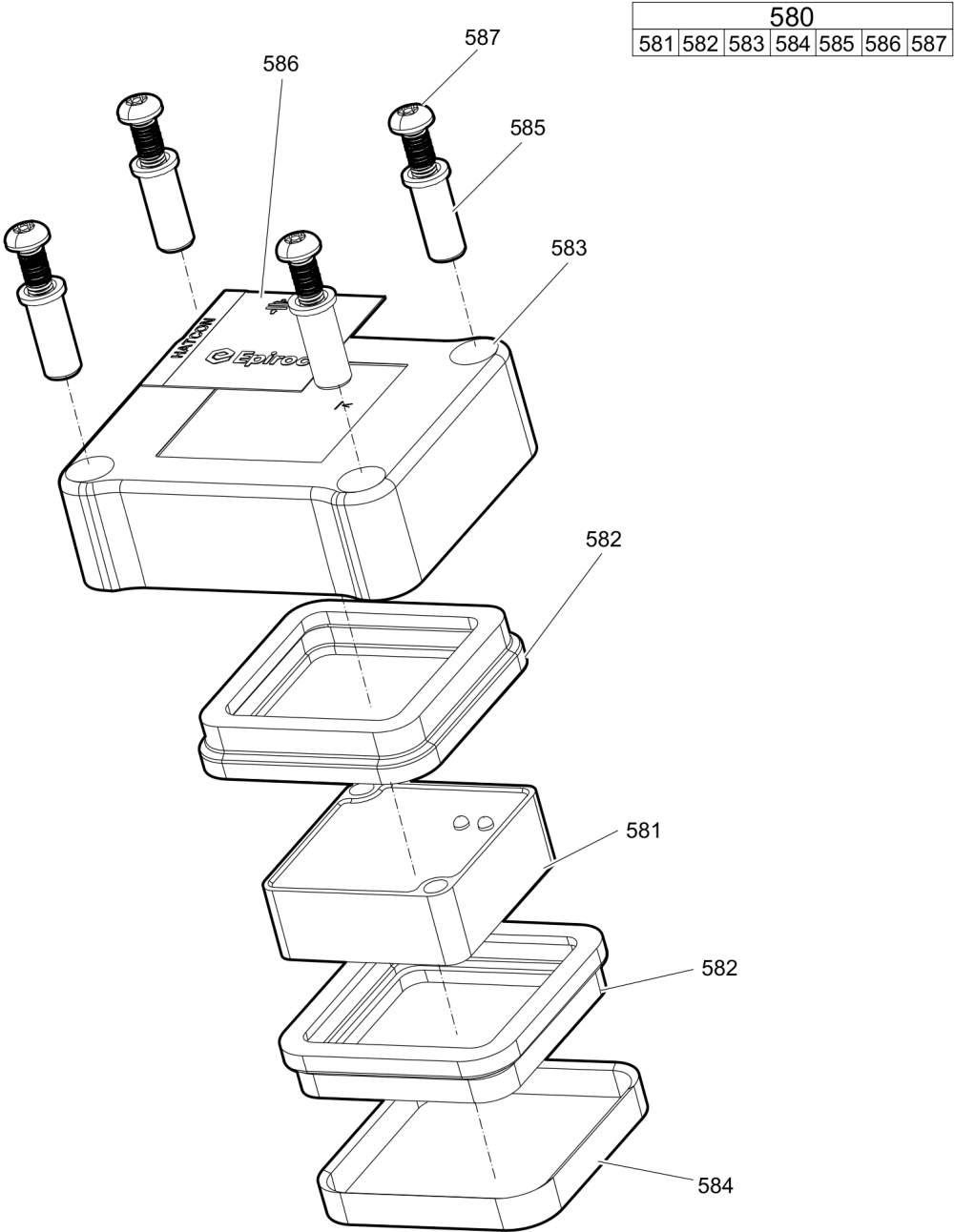
Route the hydraulic hoses as shown on the drawing. It must be ensured that the hydraulic hoses can move freely and are not in contact to any point.

E | Grease line

secure with Loctite 243

Route the hydraulic hoses as shown on the drawing. It must be ensured that the hydraulic hoses can move freely and are not in contact to any point.

Mechanical HATCON

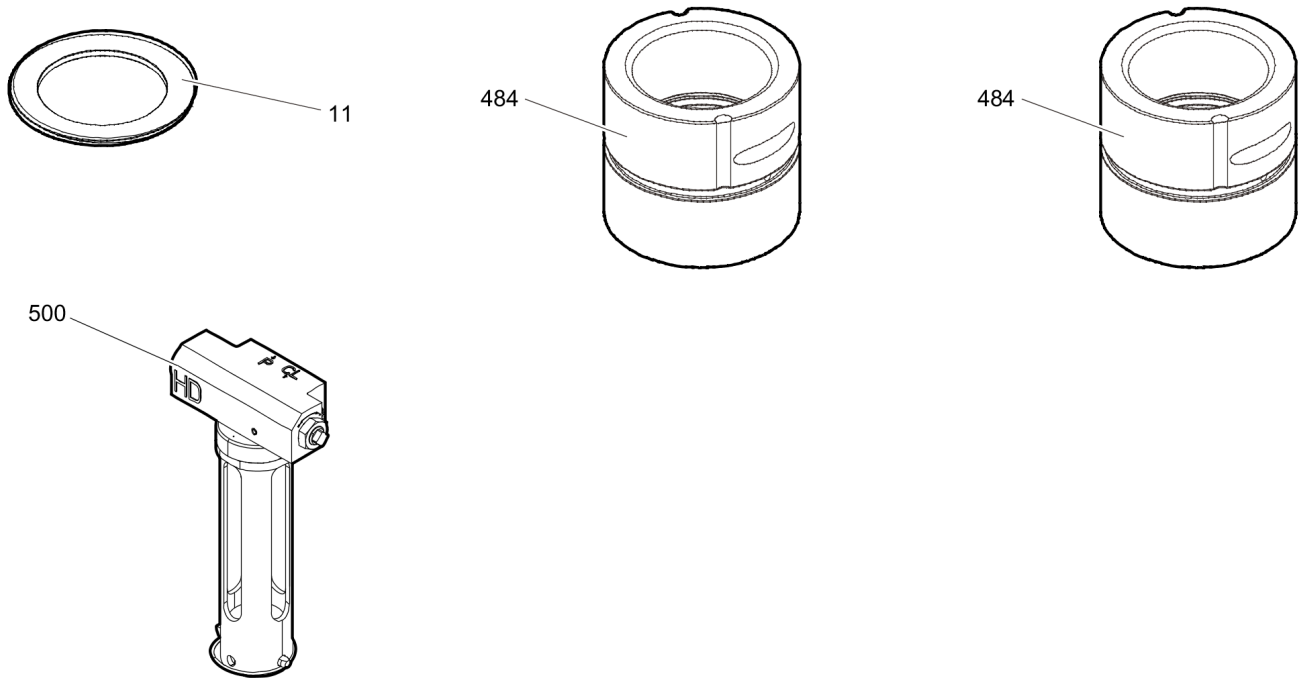


Item	Part No.	Name	Qty	L
580(581-587)		HATCON	1	A
581		TRACKING MODULE HATCON	1	
582	3315439130	DAMPER HATCON	2	
583	3315439110	HOUSING TYPE 1 HATCON	1	
584	3315439140	LOCK RING HATCON	1	
585	3315439120	SLEEVE HATCON	4	
586	3315439100	PRODUCT LABEL HATCON	1	
587	3315442600	SCREW HATCON	4	

Comments for Page: HATCON

A | part number see chapter "Optional equipment"

## Mechanical Optional parts



Item	Part No.	Name	Qty	L
11	3363035641	FLOATING RING (steel)	1	
484	3363088657	WEAR BUSH (steel)	1	
484	3363088513	WEAR BUSH (bronze)	1	
500	3363117931	AUTOMATIC LUBRICATION SYSTEM HD	2	

---

Mechanical Tightening torques

NO EXPLODED VIEW  
AVAILABLE  
FOR THIS BOM



Item	Part No.	Name	Qty	L
34	-	ALLEN SCREW - 200 Nm (148 ft lbf)	-	A
36	-	ALLEN SCREW - 85 Nm (63 ft lbf)	-	B
44	-	ALLEN SCREW - 85 Nm (63 ft lbf)	-	B
104	-	ALLEN SCREW - 380 Nm (280 ft lbf)	-	C
107	-	THREADED PLUG - 300 Nm (221 ft lbf)	-	D
110	-	THREADED PLUG - 300 Nm (221 ft lbf)	-	E
130	-	NON-RETURN VALVE - 200 Nm (148 ft lbf)	-	F
139	-	ALLEN SCREW - 80 Nm (59 ft lbf)	-	B
161	-	FASTENING SCREW -	-	G
175	-	ALLEN SCREW - 80 Nm (59 ft lbf)	-	B
181	-	FILLING VALVE - 130 Nm (96 ft lbf)	-	H
182	-	THREADED PLUG - 20 Nm (15 ft lbf)	-	I
188	-	THREADED PLUG - 300 Nm (221 ft lbf)	-	E
191	-	TENSIONING BOLT -	-	J
195	-	VALVE - 250 Nm (184 ft lbf)	-	Q
554	-	ALLEN SCREW - 85 Nm (63 ft lbf)	-	B
555	-	ALLEN SCREW - 200 Nm (148 ft lbf)	-	A
561	-	HYDRAULIC HOSE - 42 Nm 31 ft lbf)	-	K
562	-	HYDRAULIC HOSE - 16 Nm (12 ft lbf)	-	L
566	-	FITTING - 60 Nm (44 ft lbf)	-	M
567	-	FITTING - 55 Nm (41 ft lbf)	-	N
568	-	FITTING - 50 Nm (37 ft lbf)	-	O
569	-	FITTING - 45 Nm (33 ft lbf)	-	P
587	-	SCREW HATCON - 22 Nm (16 ft lbf)	-	R

Comments for Page: Tightening torques

(L)OCAL REMARKS

A | Allen key size 14

B | Allen key size 10

C | Allen key size 17

D | Allen key size 22

E | Socket spanner size 24

F | Socket spanner size 41

G | Socket spanner size 30

1. Treat the threads and threaded inserts for the fastening screws with an Anti-Seize agent.
2. Treat the surfaces between the screw head, washer, and HP-accumulator cover with Anti-Seize.
3. Place on the HP-accumulator, and tighten the fastening screws by hand in a crosswise fashion.
4. Pretighten the fastening screws to 80 Nm (59 ft lbf), proceeding in a crosswise fashion,

Refer to the DocMine web page for most up-to-date information. The printed information might be outdated.

Thu Feb 08 06:47:57 UTC 2024

5. then tighten each screw through 30° in a crosswise fashion,
6. finally tighten each screw again through 60° in a crosswise fashion.

H | Socket spanner size 22

I | Allen key size 5

J | Torque wrench or Power wrench size 65

1. Pretighten the tensioning bolts to 500 Nm (369 ft lbf), proceeding in a crosswise fashion,
2. then tighten each tensioning bolt through 180° (3 sides of hexagonal head) in a crosswise fashion,
3. then tighten each tensioning bolt again through 180° (3 sides of hexagonal head) in a crosswise fashion.
4. finally loose each tensioning bolt through -15° (1/4 side of hexagonal head) in a crosswise fashion.

K | Open-ended wrench size 19

L | Open-ended wrench size 17

M | Open-ended wrench size 19, 22, 27

N | Open-ended wrench size 19, 22

O | Open-ended wrench size 17, 22, 27

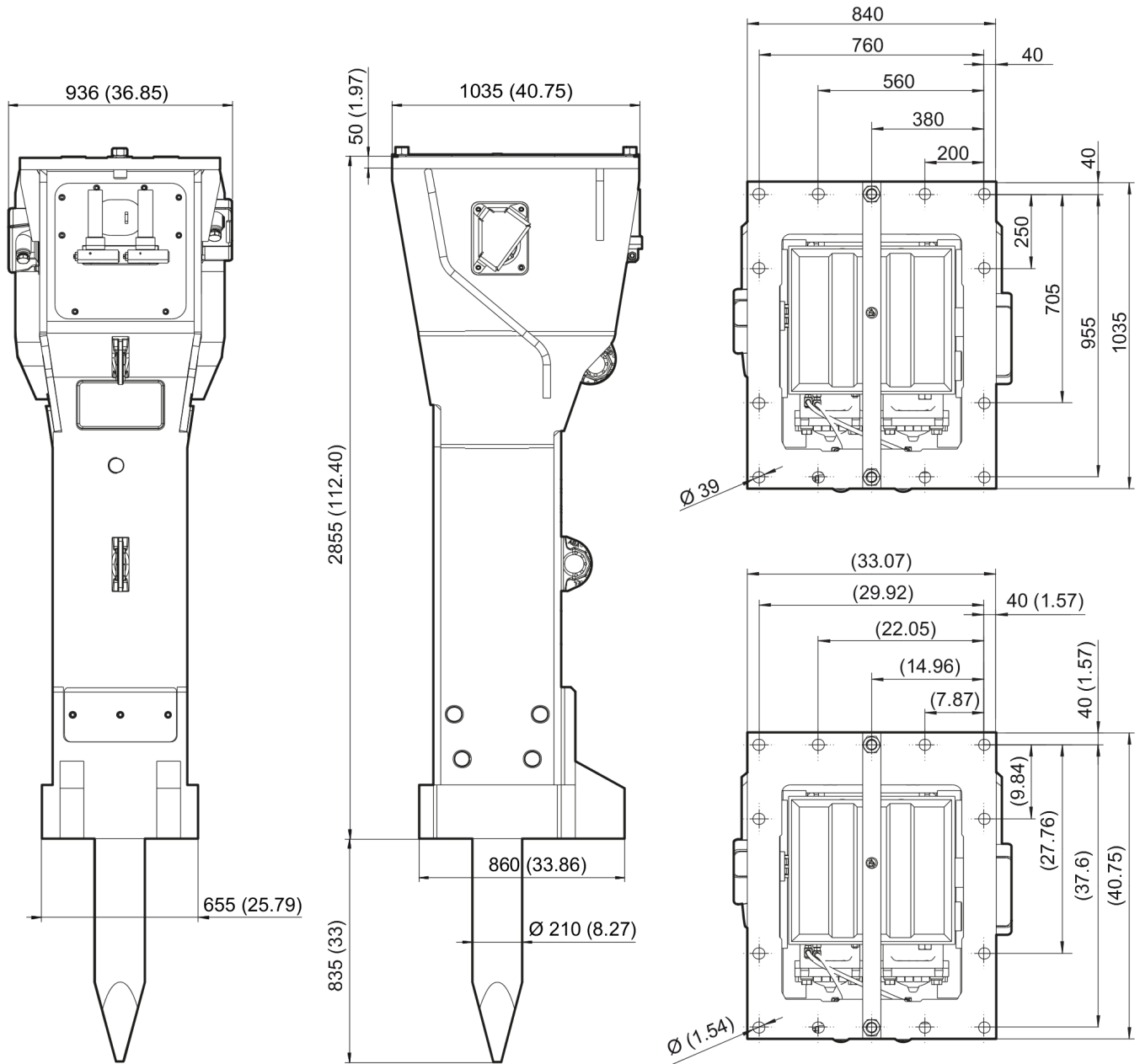
P | Open-ended wrench size 17, 19, 22

Q | Allen key size 24

R | Security bit HATCON

This page intentionally left blank

## Mechanical Dimensions HB 7000

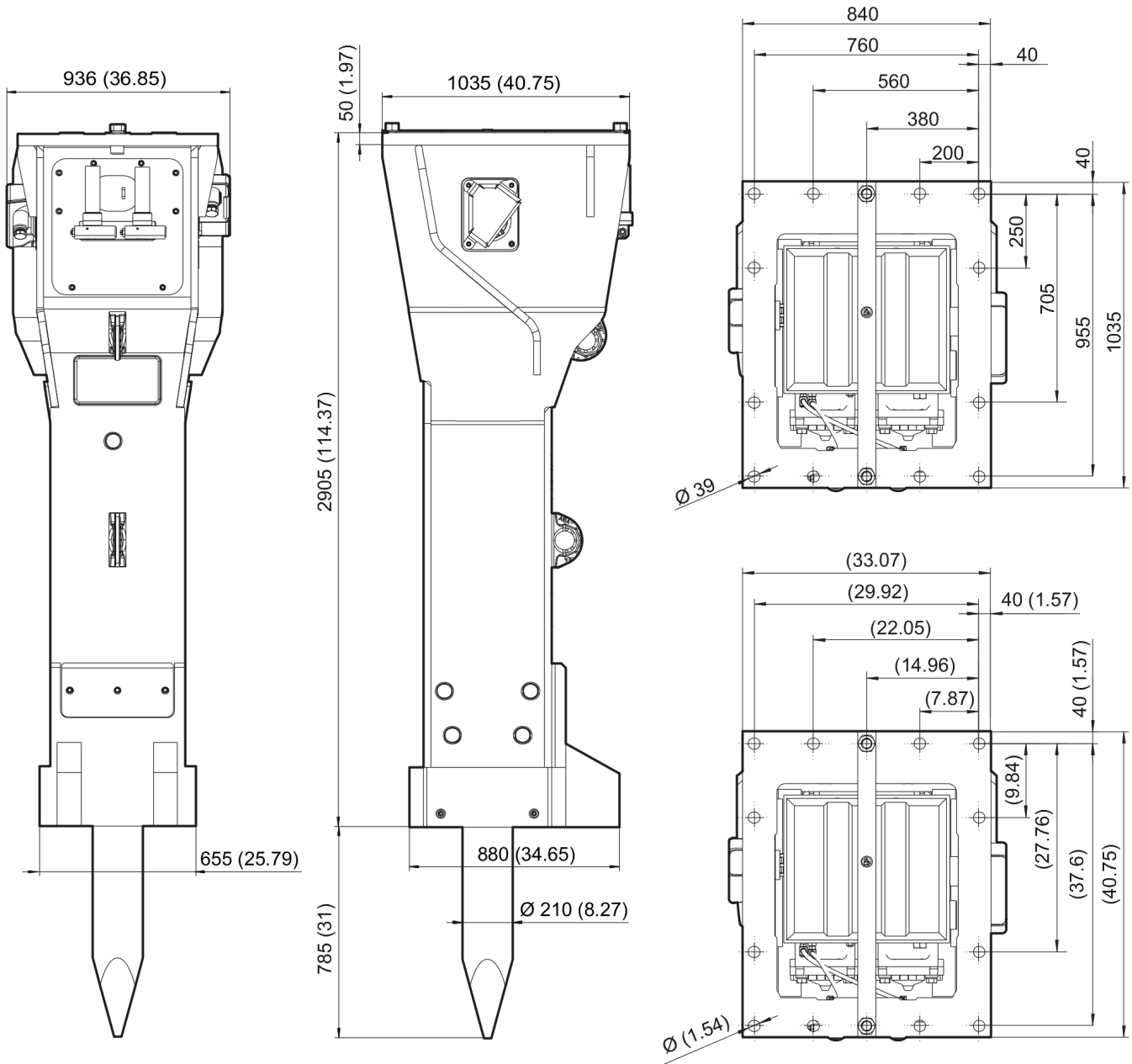


Refer to the DocMine web page for most up-to-date information. The printed information might be outdated.

Thu Feb 08 06:47:57 UTC 2024

This page intentionally left blank

## Mechanical Dimensions HB 7000 DP



Refer to the DocMine web page for most up-to-date information. The printed information might be outdated.

Thu Feb 08 06:47:57 UTC 2024

This page intentionally left blank

Options / accessories Hydraulic hoses

NO EXPLODED VIEW  
AVAILABLE  
FOR THIS BOM

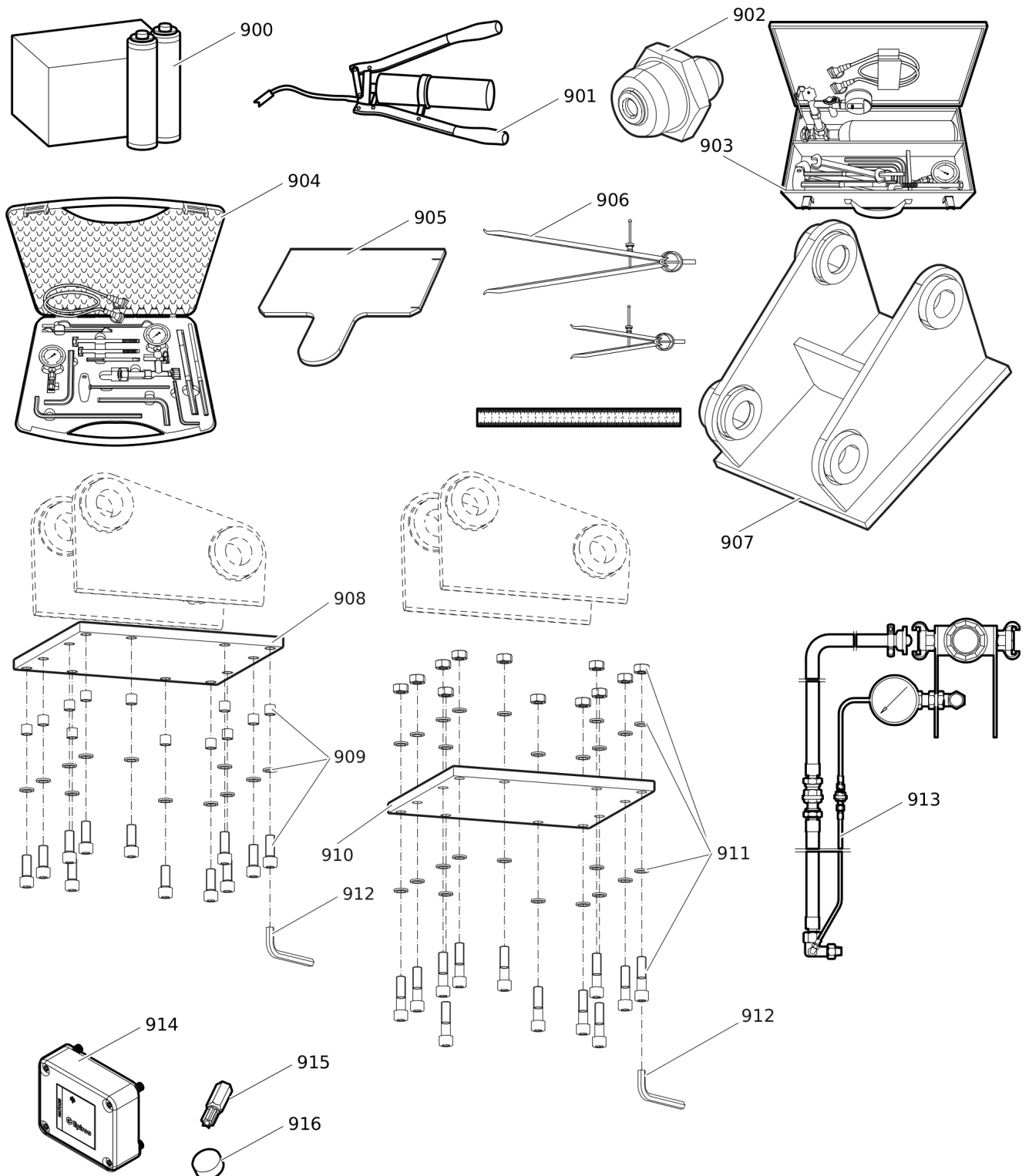


Item	Part No.	Name	Qty	L
-	3361853860	HYDRAULIC HOSE, I.D. 32 (1 1/4"), both ends JIC 1 5/8", length 2800 mm (110 in.)	1	
-	3363083563	HYDRAULIC HOSE, I.D. 40 (1 1/2"), both ends JIC 1 7/8", length 2800 mm (110 in.)	1	A
-	3361853861	HYDRAULIC HOSE, I.D. 32 (1 1/4"), both ends JIC 1 5/8", length 3500 mm (138 in.)	1	
-	3363083562	HYDRAULIC HOSE, I.D. 40 (1 1/2"), both ends JIC 1 7/8", length 3500 mm (138 in.)	1	A

Comments for Page: Hydraulic hoses

A | Return line

## Options / accessories Optional equipment



Refer to the DocMine web page for most up-to-date information. The printed information might be outdated.

Thu Feb 08 06:47:58 UTC 2024

Item	Part No.	Name	Qty	L
900	3363122356	BIO CHISEL PASTE CARTRIDGE, 12 x 550 g (1.2 lbs)	1	
900	3363091200	CHISEL PASTE CARTRIDGE, 12 x 500 g (1.1 lbs)	1	
901	3363034567	GREASE PUMP	1	
902	3360433774	GREASE NIPPLE	1	
903	3363089845	MAINTENANCE AND CHARGING BOX with nitrogen cylinder, 5 l, 1.1 gal (1.32 US gal)	1	
904	3363094940	MAINTENANCE AND CHARGING BOX without nitrogen cylinder	1	
905	3362235295	TEST GAUGE lower wear bush	1	
906	3363094952	INSIDE CALLIPERS UPPER WEAR BUSH	1	
907		ADAPTER PLATE matching the carrier. Consult the authorized Customer Center/Dealer in your area.	1	
908	3363093497	BASE PLATE WITH THREADED INSERTS	1	
909	3363087305	BOLT KIT	1	
910	3363102875	BASE PLATE WITH THROUGH BORINGS	1	
911	3363094577	BOLT KIT	1	
912	3360478949	ALLEN KEY (27 mm)	1	
913	3363103077	ADAPTER KIT for underwater applications	1	
914	3315442500	HATCON KIT 1 (3G)	1	A
914	3315442520	HATCON KIT 1 (LTE)	1	A
915	3315439105	SECURITY BIT HATCON	1	
916	3315439106	MAGNET HATCON	1	

Comments for Page: Optional equipment

A | with item 915 and 916

Hydraulic breakers are factory equipped with threads for attaching Retrofit kit HATCON

from s/n DEQ192196 - (HB 7000 with lower wear bush steel)

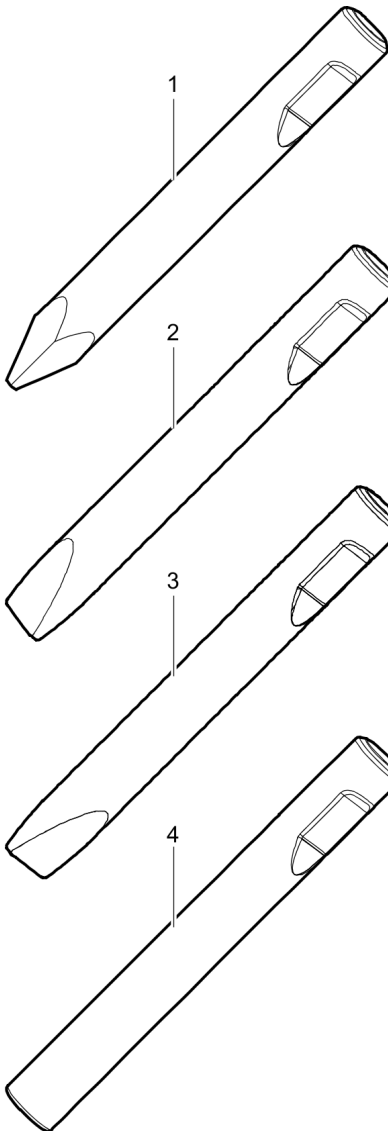
from s/n DEQ192015 - (HB 7000 with lower wear bush bronze)

from s/n DEQ192196 - (HB 7000 DP with lower wear bush steel)

from s/n DEQ191961 - (HB 7000 DP with lower wear bush bronze)

B | Consult the authorized Customer Center/Dealer in your area.

## Options / accessories Working tools ClassicLine HB 7000

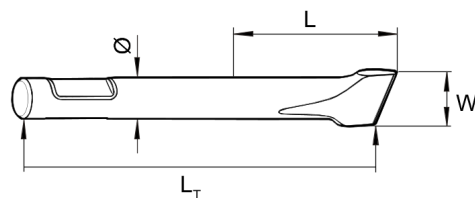


Ø=210 mm, L=835 mm, LT=1700 mm, Wt=400.0 kg  
Ø=8.27 inch, L=33 inch, LT=66.93 inch, Wt=881.8 lb

Ø=210 mm, W=210 mm, L=835 mm, LT=1700 mm, Wt=415.0 kg  
Ø=8.27 inch, W=8.27 inch, L=33 inch, LT=66.93 inch, Wt=914.9 lb

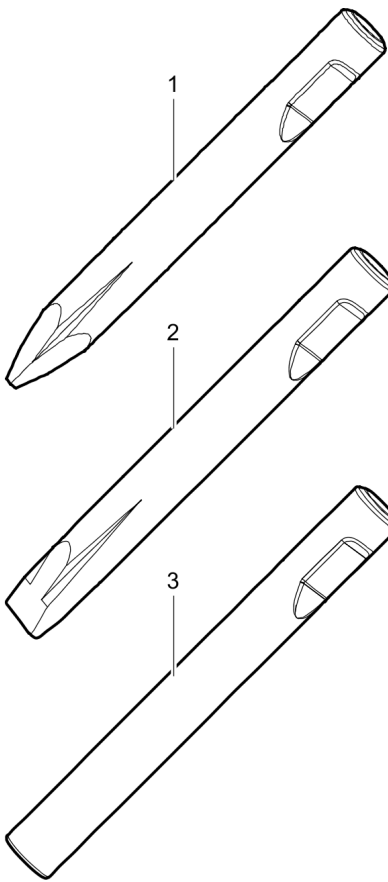
Ø=210 mm, W=210 mm, L=835 mm, LT=1700 mm, Wt=415.0 kg  
Ø=8.27 inch, W=8.27 inch, L=33 inch, LT=66.93 inch, Wt=914.9 lb

Ø=210 mm, L=835 mm, LT=1700 mm, Wt=432.0 kg  
Ø=8.27 inch, L=33 inch, LT=66.93 inch, Wt=952.4 lb



Item	Part No.	Name	Qty	L
1	3363119563	MOIL POINT	1	
2	3363119564	CHISEL (cross)	1	
3	3363119565	CHISEL (parallel)	1	
4	3363119566	BLUNT TOOL	1	

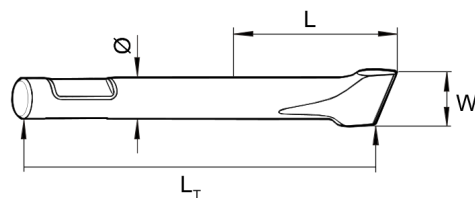
## Options / accessories Working tools ProLine HB 7000



Ø=210 mm, L=935 mm, LT=1800 mm, Wt=417.0 kg  
Ø=8.27 inch, L=37 inch, LT=70.87 inch, Wt=919.3 lb

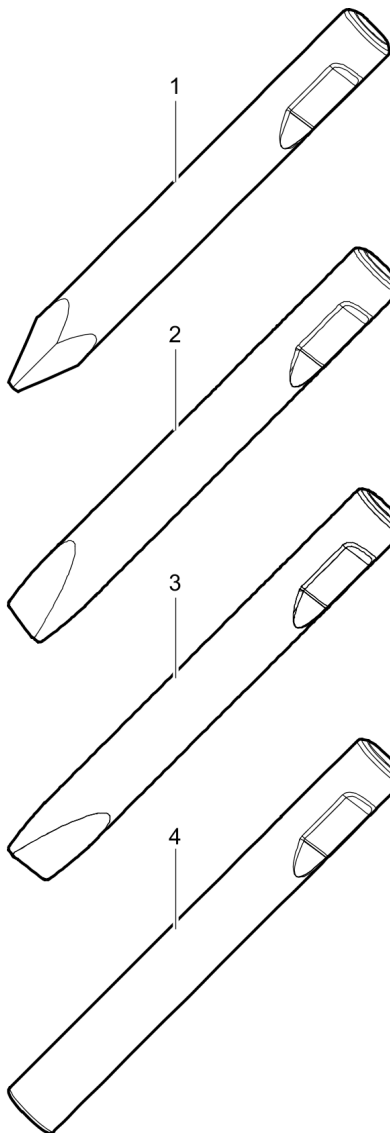
Ø=210 mm, W=210 mm, L=935 mm, LT=1800 mm, Wt=433.0 kg  
Ø=8.27 inch, W=8.27 inch, L=37 inch, LT=70.87 inch, Wt=954.6 lb

Ø=210 mm, L=935 mm, LT=1800 mm, Wt=470.0 kg  
Ø=8.27 inch, L=37 inch, LT=70.87 inch, Wt=1036.2 lb



Item	Part No.	Name	Qty	L
1	3363118329	MOIL POINT	1	
2	3363118333	CHISEL (cross)	1	
3	3363091425	BLUNT TOOL	1	

## Options / accessories Working tools ClassicLine HB 7000 DP

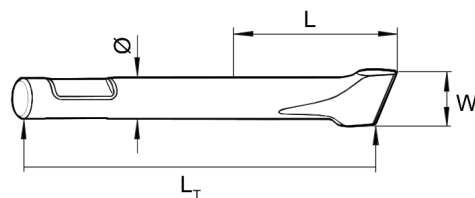


Ø=210 mm, L=785 mm, LT=1700 mm, Wt=400.0 kg  
Ø=8.27 inch, L=31 inch, LT=66.93 inch, Wt=881.8 lb

Ø=210 mm, W=210 mm, L=785 mm, LT=1700 mm, Wt=415.0 kg  
Ø=8.27 inch, W=8.27 inch, L=31 inch, LT=66.93 inch, Wt=914.9 lb

Ø=210 mm, W=210 mm, L=785 mm, LT=1700 mm, Wt=415.0 kg  
Ø=8.27 inch, W=8.27 inch, L=31 inch, LT=66.93 inch, Wt=914.9 lb

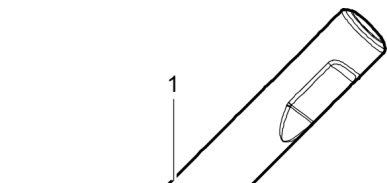
Ø=210 mm, L=785 mm, LT=1700 mm, Wt=432.0 kg  
Ø=8.27 inch, L=31 inch, LT=66.93 inch, Wt=952.4 lb



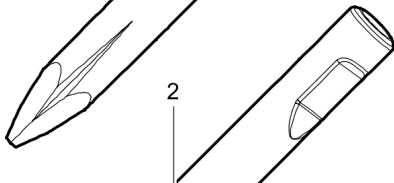


Item	Part No.	Name	Qty	L
1	3363119563	MOIL POINT	1	
2	3363119564	CHISEL (cross)	1	
3	3363119565	CHISEL (parallel)	1	
4	3363119566	BLUNT TOOL	1	

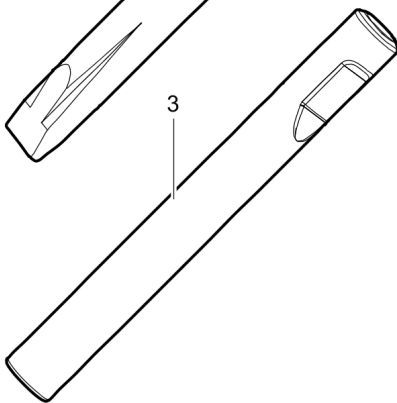
## Options / accessories Working tools ProLine HB 7000 DP



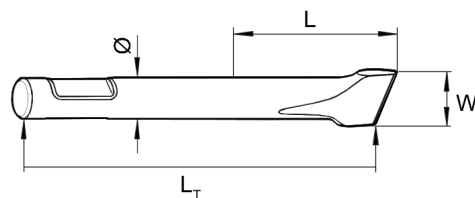
Ø=210 mm, L=885 mm, LT=1800 mm, Wt=417.0 kg  
Ø=8.27 inch, L=35 inch, LT=70.87 inch, Wt=919.3 lb



Ø=210 mm, W=210 mm, L=885 mm, LT=1800 mm, Wt=433.0 kg  
Ø=8.27 inch, W=8.27 inch, L=35 inch, LT=70.87 inch, Wt=954.6 lb



Ø=210 mm, L=885 mm, LT=1800 mm, Wt=470.0 kg  
Ø=8.27 inch, L=35 inch, LT=70.87 inch, Wt=1036.2 lb



Item	Part No.	Name	Qty	L
1	3363118329	MOIL POINT	1	
2	3363118333	CHISEL (cross)	1	
3	3363091425	BLUNT TOOL	1	

Any unauthorized use or copying of the contents or any part thereof is prohibited.  
This applies in particular to trademarks, model denominations, part numbers, and drawings.