

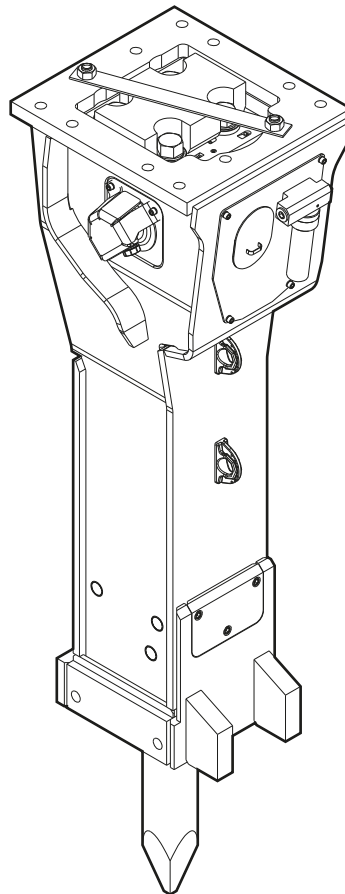
HB 2500, HB 2500 DP

Spare parts list

Hydraulic breakers

HB 2500 s/n DEQ180110 - DEQ220481

HB 2500 DP s/n DEQ180110 - DEQ220481



General information

This spare parts list applies to the following:

| Part number | Description |
|-------------|--|
| 3363120928 | Hydraulic breaker HB 2500 with lower wear bush (steel) |
| 3363121265 | Hydraulic breaker HB 2500 with lower wear bush (bronze) |
| 3363120929 | Hydraulic breaker HB 2500 DP with lower wear bush (steel) |
| 3363121266 | Hydraulic breaker HB 2500 DP with lower wear bush (bronze) |
| 3363124778 | Hydraulic breaker HB 2500 with lower wear bush (steel) with HATCON |
| 3363124779 | Hydraulic breaker HB 2500 with lower wear bush (bronze) with HATCON |
| 3363124780 | Hydraulic breaker HB 2500 DP with lower wear bush (steel) with HATCON |
| 3363124781 | Hydraulic breaker HB 2500 DP with lower wear bush (bronze) with HATCON |

Use only authorized parts. Any damage or malfunction caused by the use of unauthorized parts is not covered by Warranty or Product Liability. Any unauthorized use or copying of the contents or any part thereof is prohibited. This applies in particular to trademarks, model denominations, part numbers, and drawings.

Instructions for use

This spare parts list contains no safety regulations and is merely intended to assist in the ordering of spare parts.

For information about operating, servicing, or repairing, the relevant Safety and operating instructions must be consulted at all costs.

Please observe the safety instructions listed in the relevant Safety and operating instructions!

Instructions for ordering

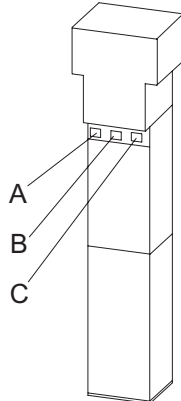
It is essential to indicate the serial number of the hydraulic attachment when ordering spare parts!

Please note the full identification number of your hydraulic attachment.

The code can be found on the cylinder.

Determine the quantity of individual parts which are required and need to be ordered. The order must indicate the following details:

- full identification code of the hydraulic attachment
- required quantity
- part number
- description



- A. Cylinder number
- B. Type
- C. Serial number

Service, repair and wear part kits

Label kit 1

Kit list 3

Mechanical

Hydraulic breaker HB 2500 8

Hydraulic breaker HB 2500 DP 11

Percussion unit part 1: cylinder cover 14

Percussion unit part 2: cylinder 18

Percussion unit part 3: lower breaker part (steel) 21

Percussion unit part 3: lower breaker part (bronze) 23

Connecting kit for automatic lubrication system 25

HATCON 27

Optional parts 29

Tightening torques 31

Dimensions HB 2500 34

Dimensions HB 2500 DP 36

Options / accessories

Hydraulic hoses 38

Optional equipment 41

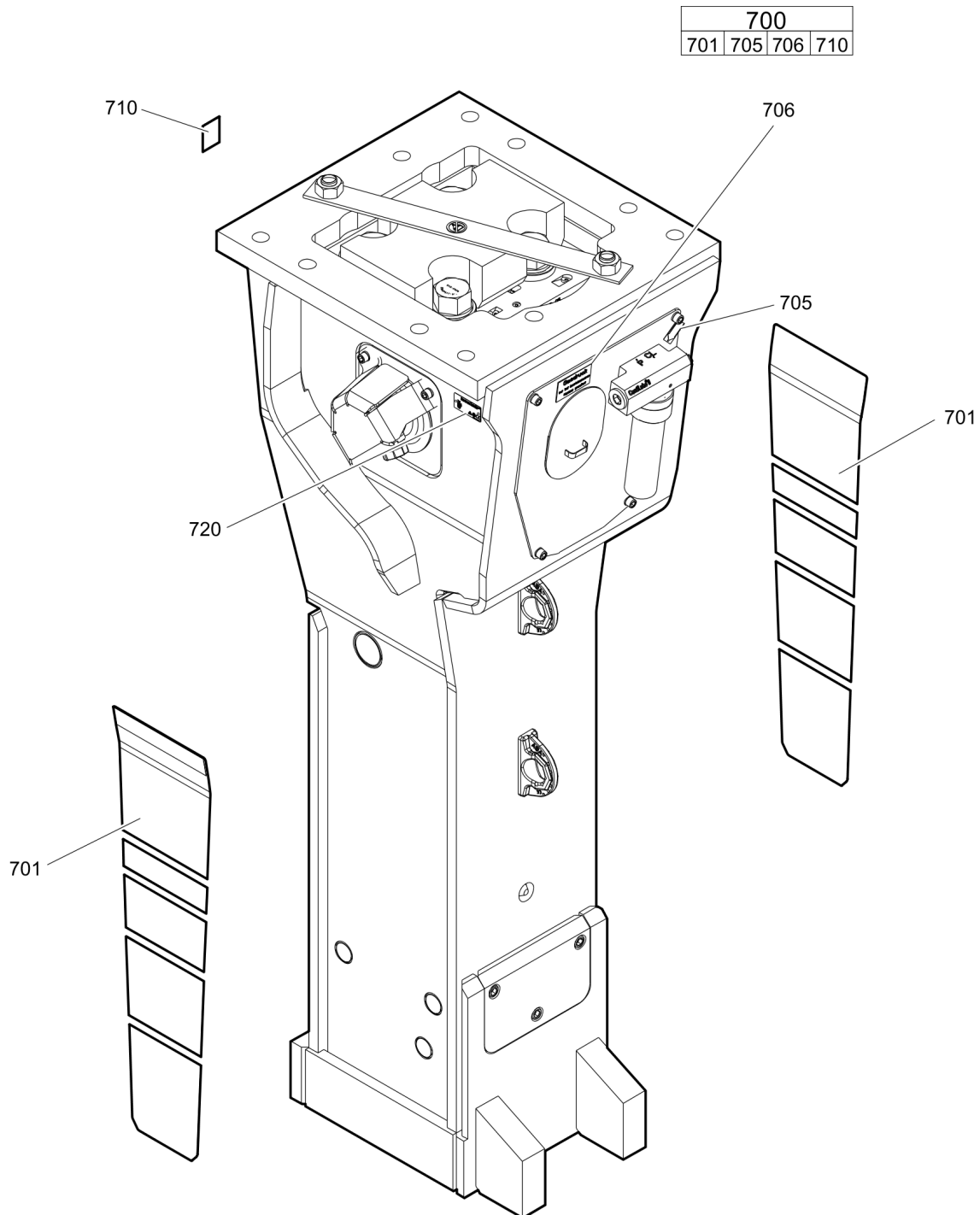
Working tools ClassicLine HB 2500 43

Working tools ProLine HB 2500 45

Working tools ClassicLine HB 2500 DP 47

Working tools ProLine HB 2500 DP 49

Service, repair and wear part kits Label kit



| Item | Part No. | Name | Qty | L |
|--------------|------------|--|-----|---|
| 700(701-710) | 3363121374 | Label kit | 1 | |
| 701 | | Label "HB 2500 Epiroc" | 2 | |
| 705 | | Label - Lubricating symbol | 1 | |
| 706 | | Label - Gas pressure | 2 | |
| 710 | | Sound power label | 1 | |
| 720 | | Name plate - Consult the authorized Customer Center/Dealer in your area. | 1 | |

Service, repair and wear part kits Kit list

NO EXPLODED VIEW
AVAILABLE
FOR THIS BOM

| Item | Part No. | Name | Qty | L |
|--------------|------------|--|-----|---|
| KIT | 3363122470 | Seal kit | 1 | |
| 103 | 3360314375 | O-ring | 1 | |
| 108 | 3360314370 | O-ring | 1 | |
| 113 | 3363123253 | Seal | 1 | |
| 115 | 3360478171 | O-ring | 1 | |
| 120 | 3360478079 | O-ring | 1 | |
| 138 | 3360314373 | O-ring | 2 | |
| 145(146-147) | 3361850422 | Seal kit | 2 | |
| 146 | | O-ring | 2 | |
| 147 | | Back-up ring | 2 | |
| 151 | 3363121175 | Seal | 1 | |
| 152 | 3363121176 | Back-up ring | 2 | |
| 153 | 3360314453 | O-ring | 1 | |
| 164 | 3361031912 | O-ring | 1 | |
| 165 | 3361850529 | Back-up ring | 1 | |
| 166 | 3361031990 | O-ring | 1 | |
| 182 | 3360478426 | Threaded plug | 1 | |
| 183 | 3360175125 | O-ring | 1 | |
| 202 | 3363098135 | Seal | 1 | |
| 203 | 3363094624 | Seal | 1 | |
| 290(291-292) | 3363094641 | Seal kit | 2 | |
| 291 | | Back-up ring | 1 | |
| 292 | | Seal | 1 | |
| 301 | 3362267583 | Stirromatic | 6 | |
| 302 | 3362267585 | Seal | 5 | |
| 303 | 3362267281 | Seal | 8 | |
| 304 | 3363122397 | Seal | 2 | |
| 306 | 3363094625 | Wiper | 1 | |
| KIT | 3363091732 | Seal kit for swivel joint for automatic lubrication system | 1 | |
| KIT | 3363115941 | Plastic parts kit | 1 | |
| 2 | 3363093879 | Elastic pad | 1 | |
| 3 | 3361356925 | Shock absorber | 2 | |
| 4 | 3363115362 | Guide plate | 2 | |
| 5 | 3363115363 | Guide plate | 2 | |
| 6 | 3363093877 | Plate | 1 | |
| KIT | 3363098085 | Tensioning bolt kit | 1 | A |
| 191 | | Tensioning bolt | 2 | |

Refer to the DocMine web page for most up-to-date information. The printed information might be outdated.

Fri Mar 18 07:03:38 UTC 2022

| Item | Part No. | Name | Qty | L |
|------|------------|--|-----|---|
| 192 | 3363093651 | Washer | 2 | |
| 487 | 3363085499 | Threaded insert | 2 | |
| KIT | 3363098086 | DustProtector kit | 1 | |
| 11 | 3363097735 | Floating ring (tribolid) | 1 | |
| 12 | 3363033723 | Counter ring | 1 | |
| 13 | 3363033719 | Guide ring | 1 | |
| 14 | 3361854363 | Locking bush | 2 | |
| 15 | 3363070643 | Bolt | 2 | |
| KIT | 3363115940 | Noise protection kit | 1 | |
| 34 | 3363086015 | Plug | 10 | |
| 35 | 3362267893 | Plug | 1 | |
| 36 | 3363115515 | Cover | 2 | |
| 40 | 3363092697 | Cover | 1 | |
| KIT | 3363103404 | Lower breaker part kit (steel) | 1 | |
| 401 | 3360981927 | Retainer bar | 2 | |
| 402 | 3361854347 | Bolt | 2 | |
| 403 | 3362262925 | Plug | 4 | |
| 482 | 3363097721 | Impact ring | 1 | |
| 483 | 3363097723 | Wear bush | 1 | |
| 484 | 3363097727 | Wear bush (steel) | 1 | |
| 485 | 3361854363 | Locking bush | 4 | |
| 486 | 3361854347 | Bolt | 2 | |
| - | 3315038100 | Bio chisel paste cartridge, 1 x 400 g (0.88 lbs) | 1 | |
| - | 3363099205 | Test gauge | 1 | |
| KIT | 3363094395 | Lower breaker part kit (bronze) | 1 | |
| 401 | 3360981927 | Retainer bar | 2 | |
| 402 | 3361854347 | Bolt | 2 | |
| 403 | 3362262925 | Plug | 4 | |
| 482 | 3363097721 | Impact ring | 1 | |
| 483 | 3363097723 | Wear bush | 1 | |
| 484 | 3363097725 | Wear bush (bronze) | 1 | |
| 485 | 3361854363 | Locking bush | 4 | |
| 486 | 3361854347 | Bolt | 2 | |
| - | 3315038100 | Bio chisel paste cartridge, 1 x 400 g (0.88 lbs) | 1 | |
| - | 3363099205 | Test gauge | 1 | |
| KIT | 3363103405 | Lower breaker part kit (steel) for DustProtector version | 1 | |
| 18 | 3363097733 | Base for wiper | 1 | |

Refer to the DocMine web page for most up-to-date information. The printed information might be outdated.

Fri Mar 18 07:03:38 UTC 2022

| Item | Part No. | Name | Qty | L |
|------|------------|---|-----|---|
| 19 | 3363097741 | Wiper | 1 | |
| 401 | 3360981927 | Retainer bar | 2 | |
| 402 | 3361854347 | Bolt | 2 | |
| 403 | 3362262925 | Plug | 4 | |
| 482 | 3363097721 | Impact ring | 1 | |
| 483 | 3363097723 | Wear bush | 1 | |
| 484 | 3363097727 | Wear bush (steel) | 1 | |
| 485 | 3361854363 | Locking bush | 4 | |
| 486 | 3361854347 | Bolt | 2 | |
| - | 3315038100 | Bio chisel paste cartridge, 1 x 400 g (0.88 lbs) | 1 | |
| - | 3363099205 | Test gauge | 1 | |
| KIT | 3363094396 | Lower breaker part kit (bronze) for DustProtector version | 1 | |
| 18 | 3363097733 | Base for wiper | 1 | |
| 19 | 3363097741 | Wiper | 1 | |
| 401 | 3360981927 | Retainer bar | 2 | |
| 402 | 3361854347 | Bolt | 2 | |
| 403 | 3362262925 | Plug | 4 | |
| 482 | 3363097721 | Impact ring | 1 | |
| 483 | 3363097723 | Wear bush | 1 | |
| 484 | 3363097725 | Wear bush (bronze) | 1 | |
| 485 | 3361854363 | Locking bush | 4 | |
| 486 | 3361854347 | Bolt | 2 | |
| - | 3315038100 | Bio chisel paste cartridge, 1 x 400 g (0.88 lbs) | 1 | |
| - | 3363099205 | Test gauge | 1 | |
| KIT | 3363098088 | Fastening screw kit | 1 | |
| 161 | 3363070490 | Allen screw | 6 | |
| 163 | 3361333703 | Pair of lock washers | 6 | |
| 172 | 3361031989 | Threaded insert | 6 | |
| KIT | 3363089849 | Accumulator repair kit | 1 | |
| - | 3362261647 | Diaphragm | 1 | |
| - | 3360332259 | Filling screw | 1 | |
| - | 3360314460 | O-ring | 1 | |
| - | 3361335025 | Protective cap | 1 | |
| - | 3361031912 | O-ring | 1 | |
| - | 3361850529 | Back-up ring | 1 | |

Comments for Page: Kit list

Refer to the DocMine web page for most up-to-date information. The printed information might be outdated.

Fri Mar 18 07:03:39 UTC 2022

A | You need Anti-Seize agent when fitting tensioning bolts. You have to order it separately.

Anti-seize 120 g, part number 3363094300

Or buy it locally according to the following specification:

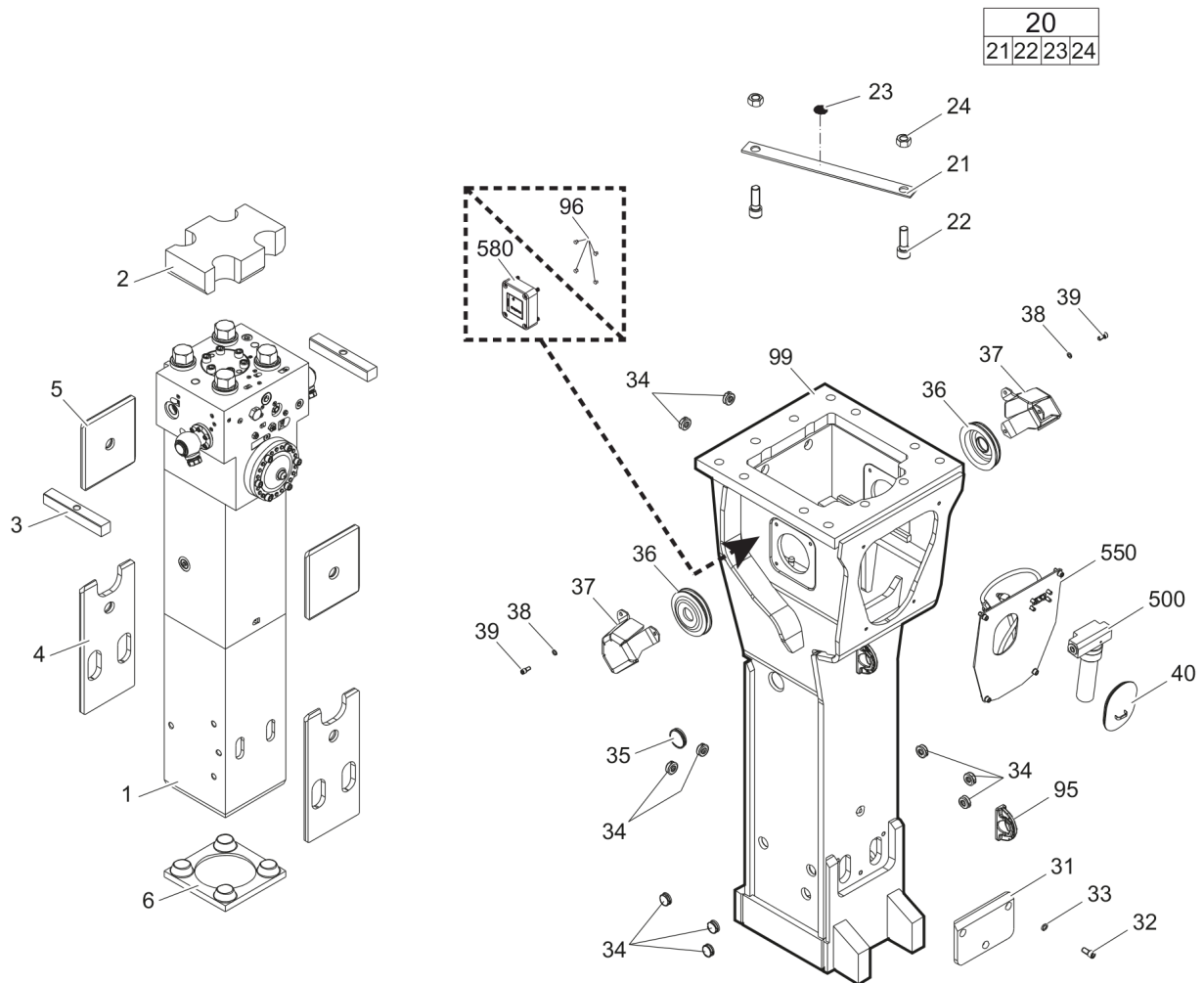
coefficient of friction 0.14 μ

coefficient of friction thread 0.13 μ

coefficient of friction on upside down 0.15 μ

This page intentionally left blank

Mechanical Hydraulic breaker HB 2500



Refer to the DocMine web page for most up-to-date information. The printed information might be outdated.

Fri Mar 18 07:03:42 UTC 2022

| Item | Part No. | Name | Qty | L |
|-----------|------------|---|-----|---|
| 1 | | Percussion unit | 1 | A |
| 2 | 3363093879 | Elastic pad | 1 | |
| 3 | 3361356925 | Shock absorber | 2 | |
| 4 | 3363115362 | Guide plate | 2 | |
| 5 | 3363115363 | Guide plate | 2 | |
| 6 | 3363093877 | Plate | 1 | |
| 20(21-24) | 3363083343 | Transport safety device complete | 1 | |
| 21 | | Transport safety device | 1 | |
| 22 | 3360026883 | Allen screw | 2 | |
| 23 | 3363091872 | Label transport safety device | 1 | |
| 24 | 3360103254 | Nut | 2 | |
| 31 | 3363115644 | Plate | 1 | |
| 32 | 3362328113 | Allen screw | 3 | |
| 33 | 3361333703 | Pair of lock washers | 3 | |
| 34 | 3363086015 | Plug | 10 | |
| 35 | 3362267893 | Plug | 1 | |
| 36 | 3363115515 | Cover | 2 | |
| 37 | 3363115524 | Swivel joint cover | 2 | |
| 38 | 3361850596 | Pair of lock washers | 6 | |
| 39 | 3360103750 | Allen screw | 6 | |
| 40 | 3363092697 | Cover | 1 | |
| 95 | 3363111994 | Lifting eye | 2 | B |
| 96 | 3315439145 | Protective plug HATCON | 4 | |
| 98 | 3363115655 | Breaker box | 1 | D |
| 500 | 3363067123 | Automatic lubrication system | 1 | |
| 550 | | Connecting kit for automatic lubrication system | 1 | A |
| 580 | | HATCON | 1 | E |

Comments for Page: Hydraulic breaker HB 2500

(L)OCAL REMARKS

A | see separate chapter

B | professional welding process necessary

C | only for hydraulic breakers without HATCON

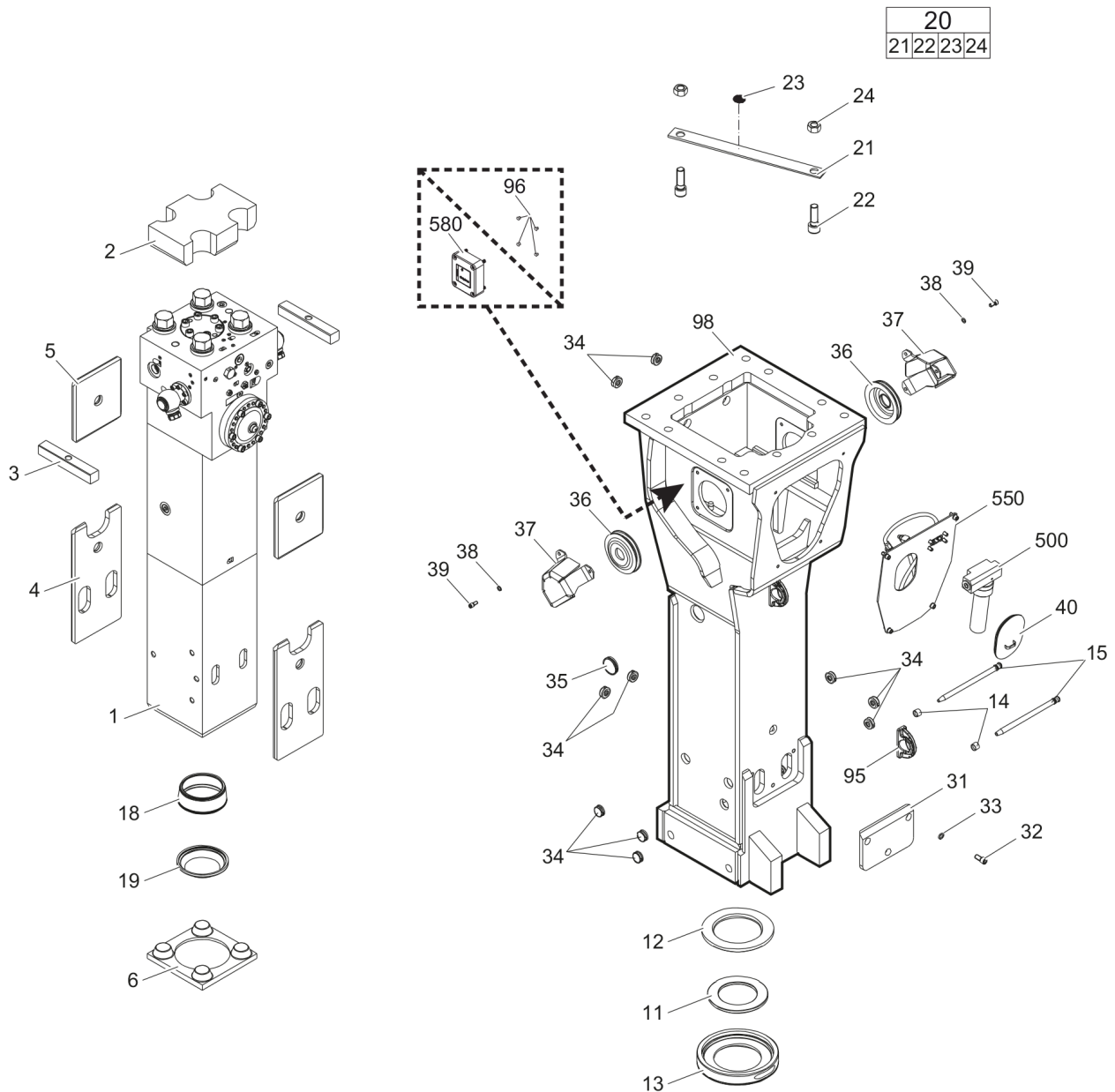
D | with item 95 and 96

E | only for hydraulic breakers with HATCON / see separate chapter

Refer to the DocMine web page for most up-to-date information. The printed information might be outdated.

Fri Mar 18 07:03:43 UTC 2022

Mechanical Hydraulic breaker HB 2500 DP



| Item | Part No. | Name | Qty | L |
|-----------|------------|---|-----|---|
| 1 | | Percussion unit | 1 | A |
| 2 | 3363093879 | Elastic pad | 1 | |
| 3 | 3361356925 | Shock absorber | 2 | |
| 4 | 3363115362 | Guide plate | 2 | |
| 5 | 3363115363 | Guide plate | 2 | |
| 6 | 3363093877 | Plate | 1 | |
| 11 | 3363097735 | Floating ring (tribolid) | 1 | B |
| 12 | 3363033723 | Counter ring | 1 | |
| 13 | 3363033719 | Guide ring | 1 | |
| 14 | 3361854363 | Locking bush | 2 | |
| 15 | 3363070643 | Bolt | 2 | |
| 18 | 3363097733 | Base for wiper | 1 | |
| 19 | 3363097741 | Wiper | 1 | |
| 20(21-24) | 3363083343 | Transport safety device complete | 1 | |
| 21 | | Transport safety device | 1 | |
| 22 | 3360026883 | Allen screw | 2 | |
| 23 | 3363091872 | Label transport safety device | 1 | |
| 24 | 3360103254 | Nut | 2 | |
| 31 | 3363115644 | Plate | 1 | |
| 32 | 3362328113 | Allen screw | 3 | |
| 33 | 3361333703 | Pair of lock washers | 3 | |
| 34 | 3363086015 | Plug | 10 | |
| 35 | 3362267893 | Plug | 1 | |
| 36 | 3363115515 | Cover | 2 | |
| 37 | 3363115524 | Swivel joint cover | 2 | |
| 38 | 3361850596 | Pair of lock washers | 6 | |
| 39 | 3360103750 | Allen screw | 6 | |
| 40 | 3363092697 | Cover | 1 | |
| 95 | 3363111994 | Lifting eye | 2 | C |
| 96 | 3315439145 | Protective plug HATCON | 4 | D |
| 98 | 3363115591 | Breaker box | 1 | E |
| 500 | 3363067123 | Automatic lubrication system | 1 | |
| 550 | | Connecting kit for automatic lubrication system | 1 | A |
| 580 | | HATCON | 1 | F |

Comments for Page: Hydraulic breaker HB 2500 DP

(L)OCAL REMARKS

Refer to the DocMine web page for most up-to-date information. The printed information might be outdated.

Fri Mar 18 07:03:44 UTC 2022

A | see separate chapter

B | steel see chapter Optional parts

C | professional welding process necessary

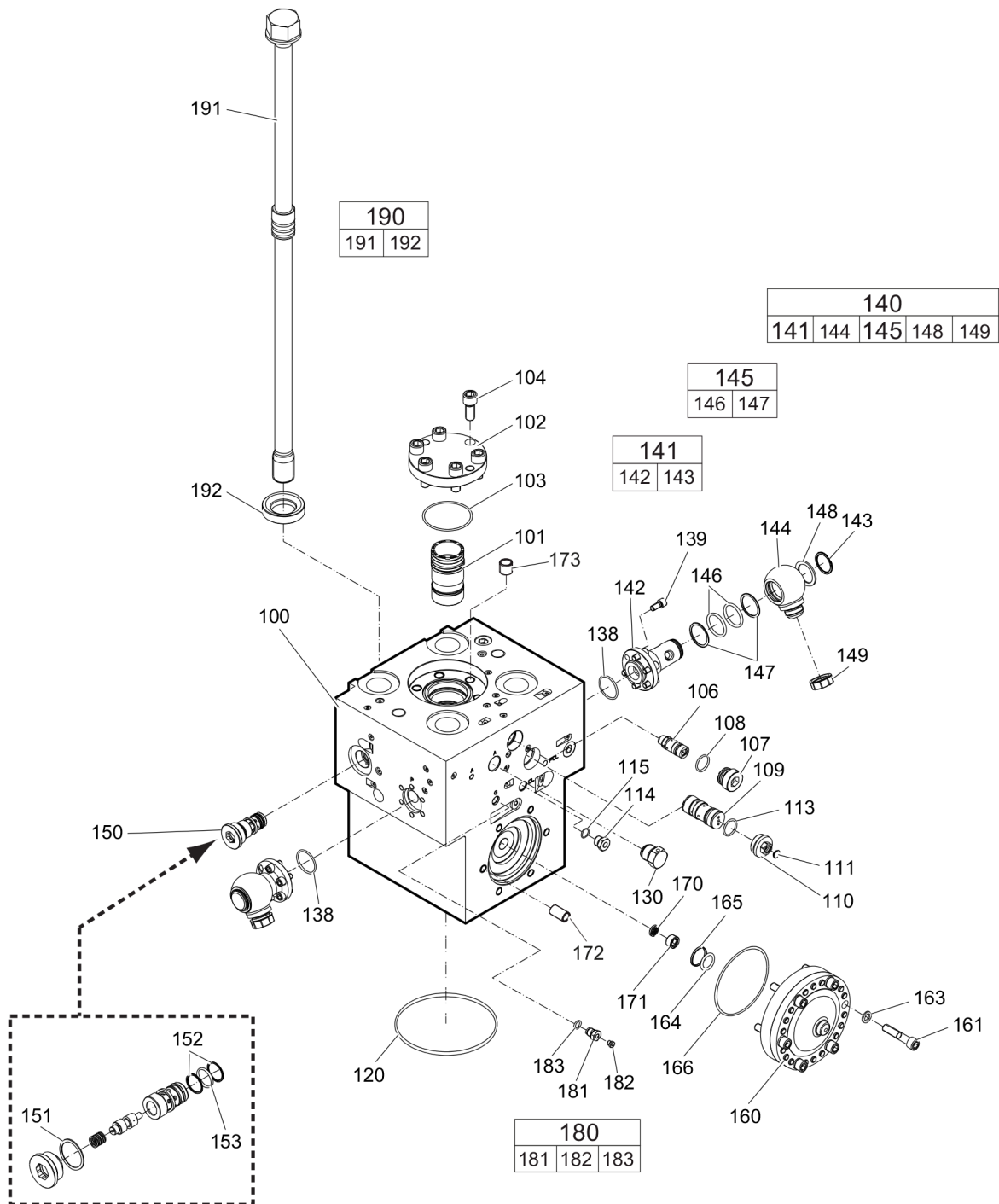
D | only for hydraulic breakers without HATCON

E | with item 95 and 96

F | only for hydraulic breakers with HATCON / see separate chapter

This page intentionally left blank

Mechanical Percussion unit part 1: cylinder cover



| Item | Part No. | Name | Qty | L |
|--------------|------------|-----------------------|-----|---|
| 100 | 3363119756 | Cylinder cover | 1 | A |
| 101 | 3363109219 | Main control valve | 1 | |
| 102 | 3363097717 | Cover | 1 | |
| 103 | 3360314375 | O-ring | 1 | |
| 104 | 3360103776 | Allen screw | 6 | |
| 106 | 3363035453 | Valve | 1 | B |
| 107 | 3363035425 | Threaded plug | 1 | |
| 108 | 3360314370 | O-ring | 1 | |
| 109 | 3363126207 | Safety valve | 1 | C |
| 110 | 3363087086 | Threaded plug | 1 | |
| 110 | 3363126740 | Threaded plug | 1 | D |
| 111 | 3363087087 | Cap | 1 | |
| 113 | 3363123253 | Seal | 1 | |
| 114 | 3361854657 | Connecting screw | 1 | |
| 115 | 3360478171 | O-ring | 1 | |
| 120 | 3360478079 | O-ring | 1 | |
| 130 | 3361854511 | Non-return valve | 1 | |
| 138 | 3360314373 | O-ring | 2 | |
| 139 | 3360103750 | Allen screw | 12 | |
| 140(141-149) | 3363116891 | Swivel joint complete | 2 | |
| 141(142-143) | 3363116890 | Adapter complete | 1 | |
| 142 | | Adapter | 1 | |
| 143 | 3363116062 | Snapring | 1 | |
| 144 | 3361356643 | Adapter | 1 | |
| 145(146-147) | 3361850422 | Seal kit | 1 | |
| 146 | | O-ring | 2 | |
| 147 | | Back-up ring | 2 | |
| 148 | 3361356645 | Disk | 1 | |
| 149 | 3361353489 | Cap | 1 | |
| 150 | 3363120683 | Valve | 1 | E |
| 151 | 3363121175 | Seal | 1 | |
| 152 | 3363121176 | Back-up ring | 2 | |
| 153 | 3360314453 | O-ring | 1 | |
| 160 | 3363069585 | HP-accumulator | 1 | |
| 161 | 3363070490 | Allen screw | 6 | |
| 163 | 3361333703 | Pair of lock washers | 6 | |
| 164 | 3361031912 | O-ring | 1 | |

Refer to the DocMine web page for most up-to-date information. The printed information might be outdated.

Fri Mar 18 07:03:45 UTC 2022

| Item | Part No. | Name | Qty | L |
|--------------|------------|--------------------------|-----|---|
| 165 | 3361850529 | Back-up ring | 1 | |
| 166 | 3361031990 | O-ring | 1 | |
| 170 | 3361844113 | Strainer disk | 1 | |
| 171 | 3361844115 | Threaded plug | 1 | |
| 172 | 3361031989 | Threaded insert | 6 | |
| 173 | 3361031529 | Threaded insert | 6 | |
| 176 | 3360478439 | Threaded plug | 1 | |
| 180(181-183) | 3363087286 | Filling valve complete | 1 | |
| 181 | | Filling valve | 1 | |
| 182 | 3360478426 | Threaded plug | 1 | |
| 183 | 3360175125 | O-ring | 1 | |
| 190(191-192) | 3363094604 | Tensioning bolt complete | 4 | |
| 191 | | Tensioning bolt | 1 | |
| 192 | 3363093651 | Washer | 1 | |

Comments for Page: Percussion unit part 1: cylinder cover

(L)OCAL REMARKS

A | with items 170 - 176

B | AutoControl

C | PowerAdapt, when ordering a new Safety valve you must additional order the new threaded plug item 110, Part No. 3363126740

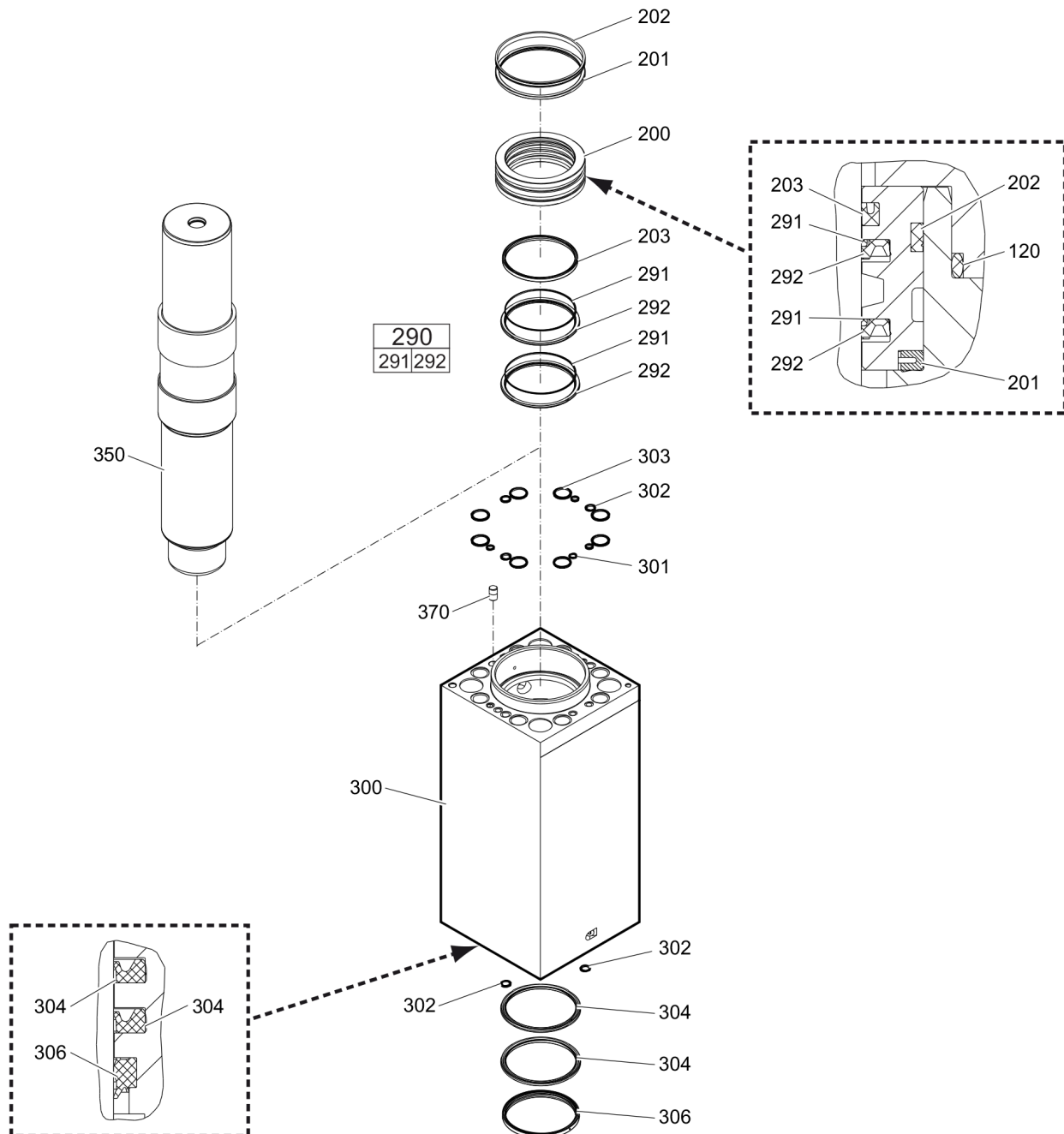
Only in exchange for the part to be replaced. Consult the authorized Customer Center/Dealer in your area.

D | only when ordering item 109

E | IPS - Intelligent Protection System, with item 151 - 153

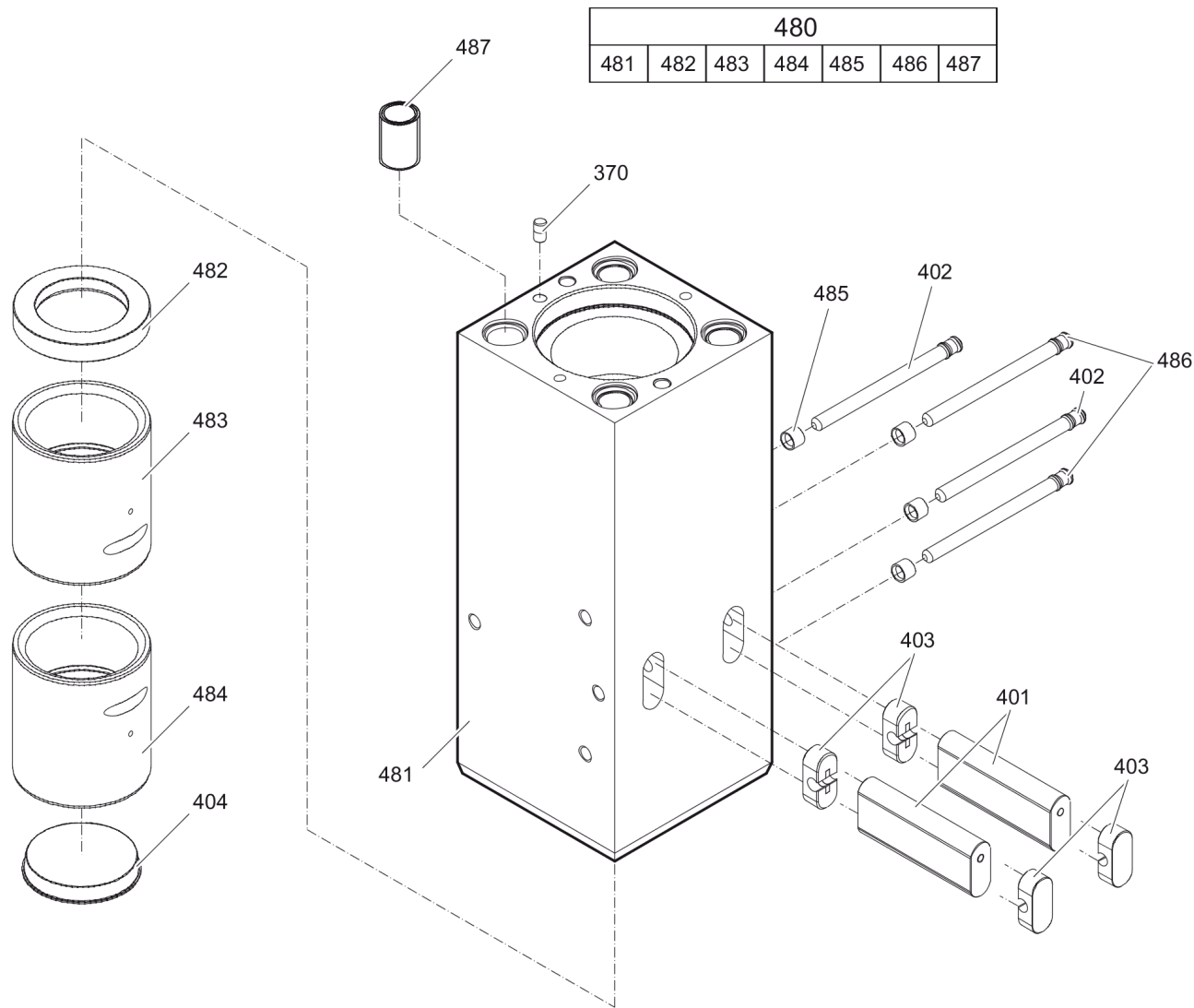
This page intentionally left blank

Mechanical Percussion unit part 2: cylinder



| Item | Part No. | Name | Qty | L |
|--------------|------------|-------------------|-----|---|
| 200 | 3363097711 | Seal bush | 1 | |
| 201 | 3363097791 | Ring | 1 | |
| 202 | 3363098135 | Seal | 1 | |
| 203 | 3363094624 | Seal | 1 | |
| 290(291-292) | 3363094641 | Seal kit | 2 | |
| 291 | | Back-up ring | 1 | |
| 292 | | Seal | 1 | |
| 300 | 3363119762 | Cylinder | 1 | |
| 301 | 3362267583 | Stirromatic | 6 | |
| 302 | 3362267585 | Seal | 5 | |
| 303 | 3362267281 | Seal | 8 | |
| 304 | 3363122397 | Seal | 2 | |
| 306 | 3363094625 | Wiper | 1 | |
| 350 | 3363094600 | Percussion piston | 1 | |
| 370 | 3362268185 | Lock pin | 1 | |

Mechanical Percussion unit part 3: lower breaker part (steel)



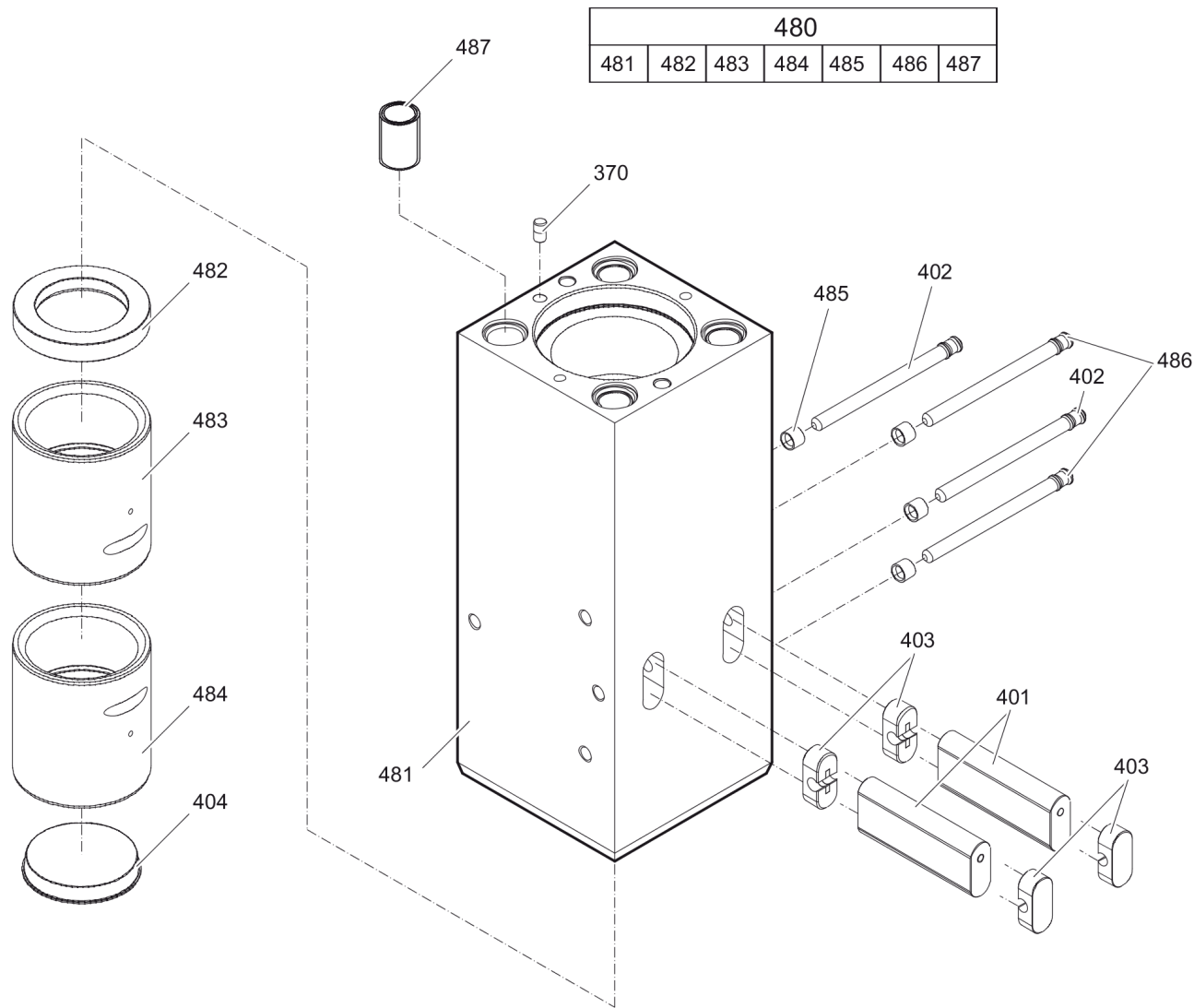
| Item | Part No. | Name | Qty | L |
|--------------|------------|--|-----|---|
| 370 | 3362268185 | Lock pin | 1 | |
| 401 | 3360981927 | Retainer bar | 2 | |
| 402 | 3361854347 | Bolt | 2 | |
| 403 | 3362262925 | Plug | 4 | |
| 404 | 3363085471 | Protective cap | 1 | |
| 480(481-487) | 3363094603 | Lower breaker part complete with lower wear bush steel | 1 | A |
| 481 | | Lower breaker part | 1 | |
| 482 | 3363097721 | Impact ring | 1 | |
| 483 | 3363097723 | Wear bush | 1 | |
| 484 | 3363097727 | Wear bush (steel) | 1 | |
| 485 | 3361854363 | Locking bush | 4 | |
| 486 | 3361854347 | Bolt | 2 | |
| 487 | 3363085499 | Threaded insert | 4 | |

Comments for Page: Percussion unit part 3: lower breaker part (steel)

(L)OCAL REMARKS

A | Note: When ordering a lower breaker part for DustProtector version it is imperative to order additionally the base for wiper (item 18) and the wiper (item 19).

Mechanical Percussion unit part 3: lower breaker part (bronze)



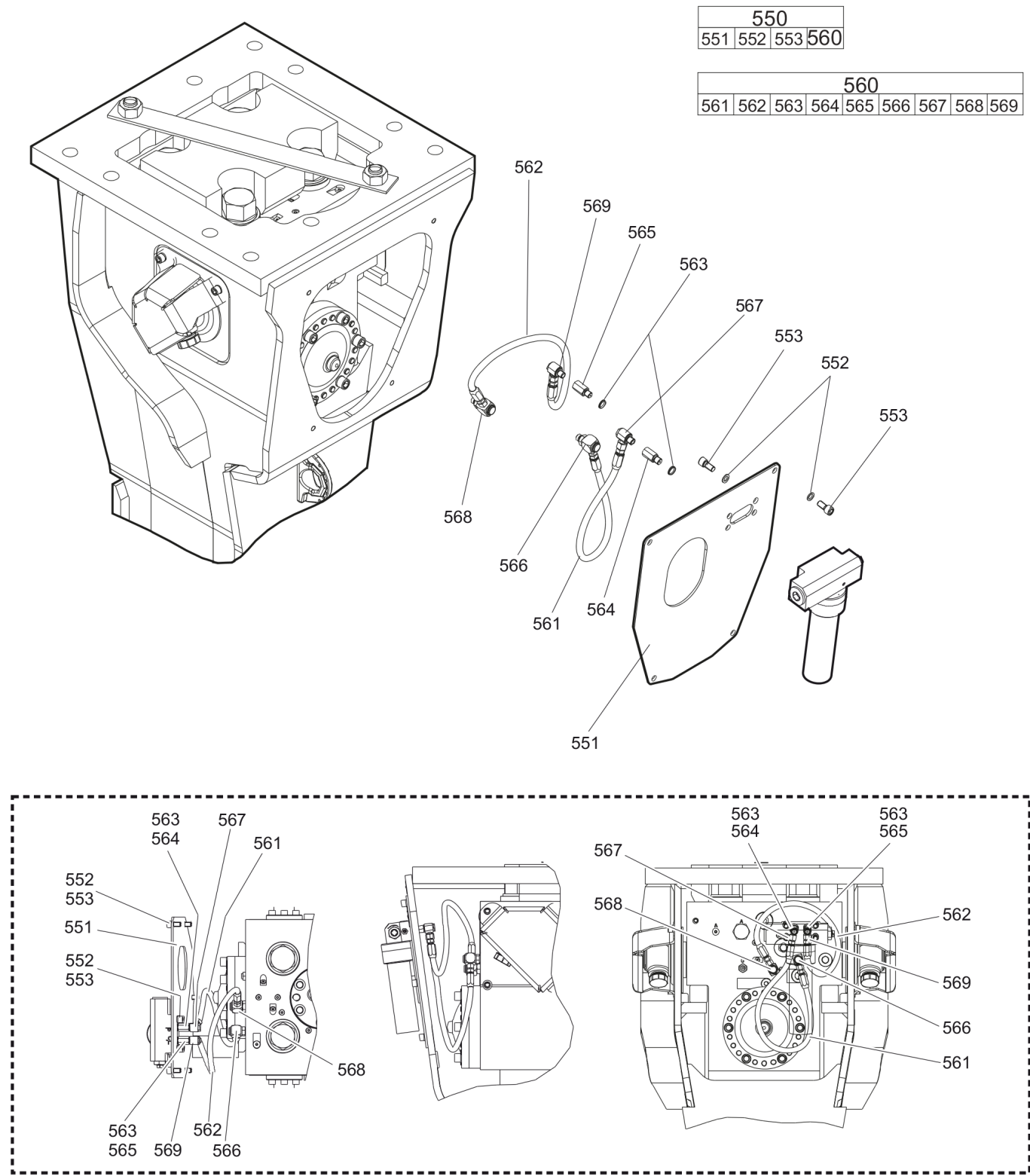
| Item | Part No. | Name | Qty | L |
|--------------|------------|---|-----|---|
| 370 | 3362268185 | Lock pin | 1 | |
| 401 | 3360981927 | Retainer bar | 2 | |
| 402 | 3361854347 | Bolt | 2 | |
| 403 | 3362262925 | Plug | 4 | |
| 404 | 3363085471 | Protective cap | 1 | |
| 480(481-487) | 3363116901 | Lower breaker part complete with lower wear bush bronze | 1 | A |
| 481 | | Lower breaker part | 1 | |
| 482 | 3363097721 | Impact ring | 1 | |
| 483 | 3363097723 | Wear bush | 1 | |
| 484 | 3363097725 | Wear bush (bronze) | 1 | |
| 485 | 3361854363 | Locking bush | 4 | |
| 486 | 3361854347 | Bolt | 2 | |
| 487 | 3363085499 | Threaded insert | 4 | |

Comments for Page: Percussion unit part 3: lower breaker part (bronze)

(L)OCAL REMARKS

A | Note: When ordering a lower breaker part for DustProtector version it is imperative to order additionally the base for wiper (item 18) and the wiper (item 19).

Mechanical Connecting kit for automatic lubrication system



| Item | Part No. | Name | Qty | L |
|--------------|------------|---|-----|---|
| 550(551-560) | | Connecting kit for automatic lubrication system | 1 | |
| 551 | 3363115645 | Plate | 1 | |
| 552 | 3361850596 | Pair of lock washers | 8 | |
| 553 | 3360103750 | Allen screw | 8 | A |
| 560(561-569) | 3363118210 | Connecting kit for automatic lubrication system | 1 | B |
| 561 | 3363083877 | Hydraulic hose | 1 | C |
| 562 | 3363087583 | Hydraulic hose | 1 | D |
| 563 | 3363066951 | Seal | 2 | |
| 564 | 3363068745 | Adapter | 1 | E |
| 565 | 3363066887 | Adapter | 1 | E |
| 566 | 3363087185 | Fitting | 1 | E |
| 567 | 3363066234 | Fitting | 1 | E |
| 568 | 3363087186 | Fitting | 1 | E |
| 569 | 3363066233 | Fitting | 1 | E |

Comments for Page: Connecting kit for automatic lubrication system

(L)OCAL REMARKS

A | secure all 4 allen screws with Loctite 243 screwed in the automatic lubrication system

B | without fastening elements

C | Oil line

secure with Loctite 243

Route the hydraulic hoses as shown on the drawing. It must be ensured that the hydraulic hoses can move freely and are not in contact at any point.

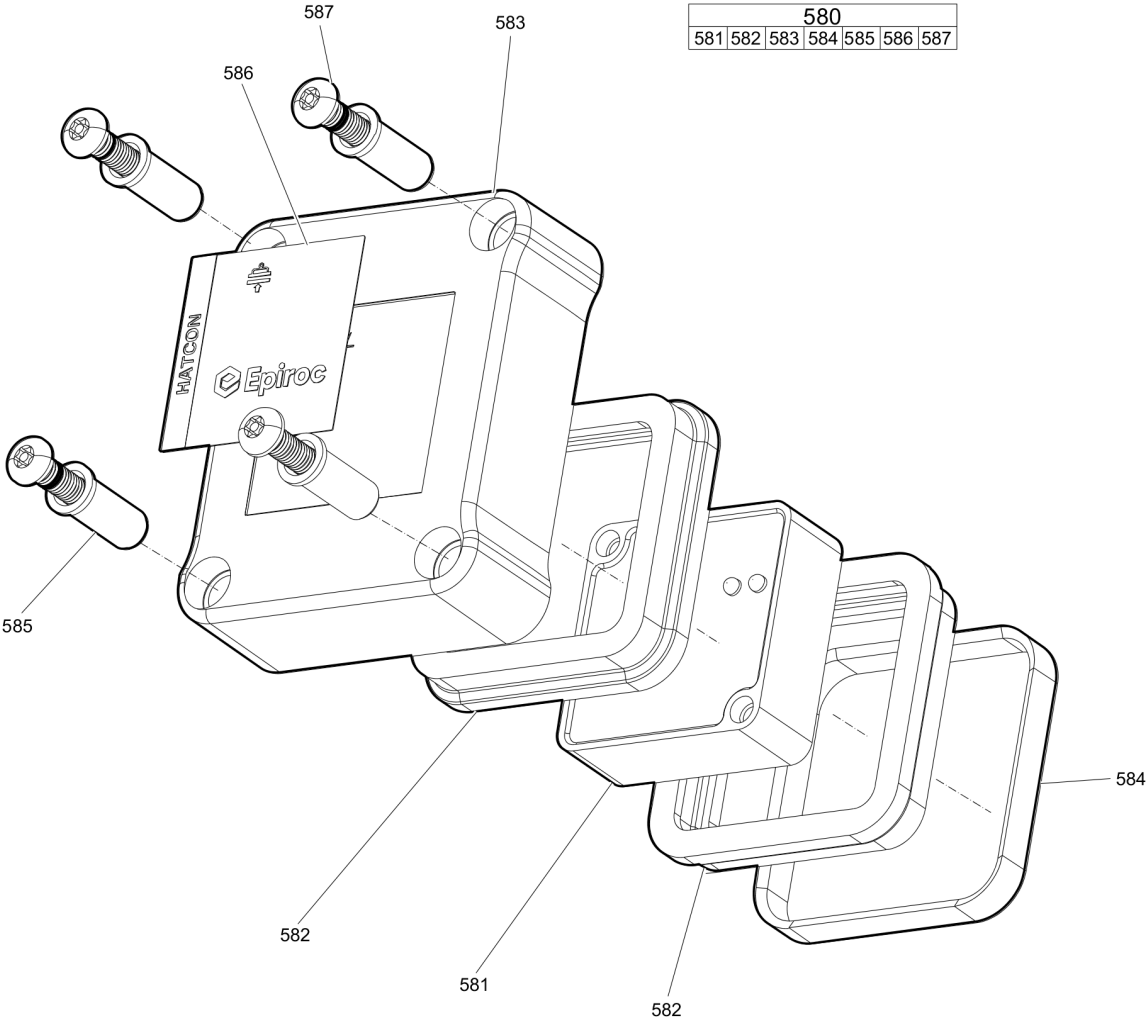
D | Grease line

secure with Loctite 243

Route the hydraulic hoses as shown on the drawing. It must be ensured that the hydraulic hoses can move freely and are not in contact at any point.

E | secure with Loctite 243

Mechanical HATCON

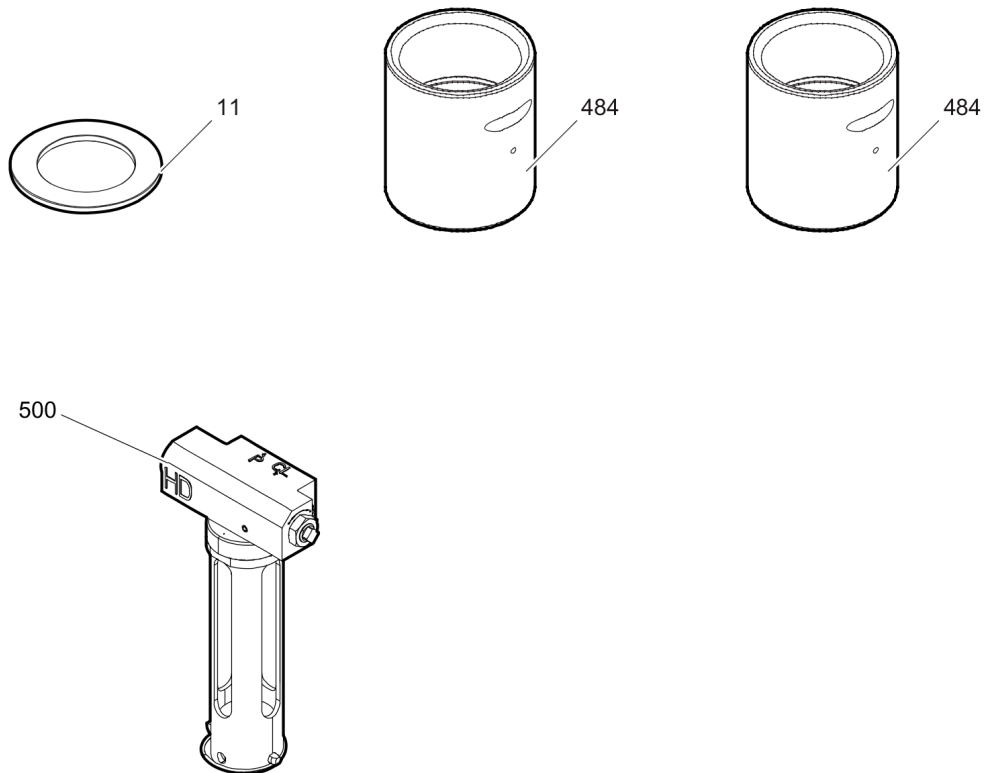


| Item | Part No. | Name | Qty | L |
|--------------|------------|------------------------|-----|---|
| 580(581-587) | | HATCON | 1 | A |
| 581 | | Tracking module HATCON | 1 | |
| 582 | 3315439130 | Damper HATCON | 2 | |
| 583 | 3315439110 | Housing type 1 HATCON | 1 | |
| 584 | 3315439140 | Lock ring HATCON | 1 | |
| 585 | 3315439120 | Sleeve HATCON | 4 | |
| 586 | 3315439100 | Product label HATCON | 1 | |
| 587 | 3315442600 | Screw HATCON | 4 | |

Comments for Page: HATCON

A | part number see chapter "Optional equipment"

Mechanical Optional parts



| Item | Part No. | Name | Qty | L |
|------|------------|---------------------------------|-----|---|
| 11 | 3363097737 | Floating ring (steel) | 1 | |
| 484 | 3363097727 | Wear bush (steel) | 1 | |
| 484 | 3363097725 | Wear bush (bronze) | 1 | |
| 500 | 3363117931 | Automatic lubrication system HD | 1 | |

Mechanical Tightening torques

NO EXPLODED VIEW
AVAILABLE
FOR THIS BOM

| Item | Part No. | Name | Qty | L |
|------|----------|--|-----|---|
| 22 | - | Allen screw - 240 Nm (177 ft lbf) | - | A |
| 32 | - | Allen screw - 200 Nm (148 ft lbf) | - | B |
| 39 | - | Allen screw - 85 Nm (63 ft lbf) | - | C |
| 104 | - | Allen screw - 380 Nm (280 ft lbf) | - | D |
| 107 | - | Threaded plug - 300 Nm (221 ft lbf) | - | A |
| 110 | - | Threaded plug - 300 Nm (221 ft lbf) | - | E |
| 130 | - | Non-return valve - 200 Nm (148 ft lbf) | - | F |
| 138 | - | Allen screw - 80 Nm (59 ft lbf) | - | C |
| 150 | - | Valve - 250 Nm (184 ft lbf) | - | P |
| 161 | - | Fastening screw - 350 Nm (258 ft lbf) | - | B |
| 181 | - | Filling valve - 130 Nm (96 ft lbf) | - | G |
| 182 | - | Threaded plug - 20 Nm (15 ft lbf) | - | H |
| 191 | - | Tensioning bolt | - | I |
| 553 | - | Allen screw - 85 Nm (63 ft lbf) | - | C |
| 561 | - | Hydraulic hose - 42 Nm (31 ft lbf) | - | J |
| 562 | - | Hydraulic hose - 16 Nm (12 ft lbf) | - | K |
| 564 | - | Adapter - 55 Nm (41 ft lbf) | - | J |
| 565 | - | Adapter - 45 Nm (33 ft lbf) | - | J |
| 566 | - | Fitting - 60 Nm (44 ft lbf) | - | L |
| 567 | - | Fitting - 55 Nm (41 ft lbf) | - | M |
| 568 | - | Fitting - 50 Nm (37 ft lbf) | - | N |
| 569 | - | Fitting - 45 Nm (33 ft lbf) | - | O |
| 587 | - | Screw HATCON - 22 Nm (16 ft lbf) | - | Q |

Comments for Page: Tightening torques

(L)OCAL REMARKS

A | Allen key size 22

B | Allen key size 14

C | Allen key size 10

D | Allen key size 17

E | Socket spanner size 24

F | Socket spanner size 41

G | Socket spanner size 22

H | Allen key size 5

I | Torque wrench or Power wrench size 65

1. Pretighten the tensioning bolts to 500 Nm (369 ft lbf), proceeding in a crosswise fashion,
2. then tighten each tensioning bolt through 120° (2 sides of hexagonal head) in a crosswise fashion,

Refer to the DocMine web page for most up-to-date information. The printed information might be outdated.

Fri Mar 18 07:03:52 UTC 2022

3. finally tighten each tensioning bolt again through 150° (2 1/2 sides of hexagonal head) in a crosswise fashion.

J | Open-ended wrench size 19

K | Open-ended wrench size 17

L | Open-ended wrench size 19, 22, 27

M | Open-ended wrench size 19, 22

N | Open-ended wrench size 17, 22, 27

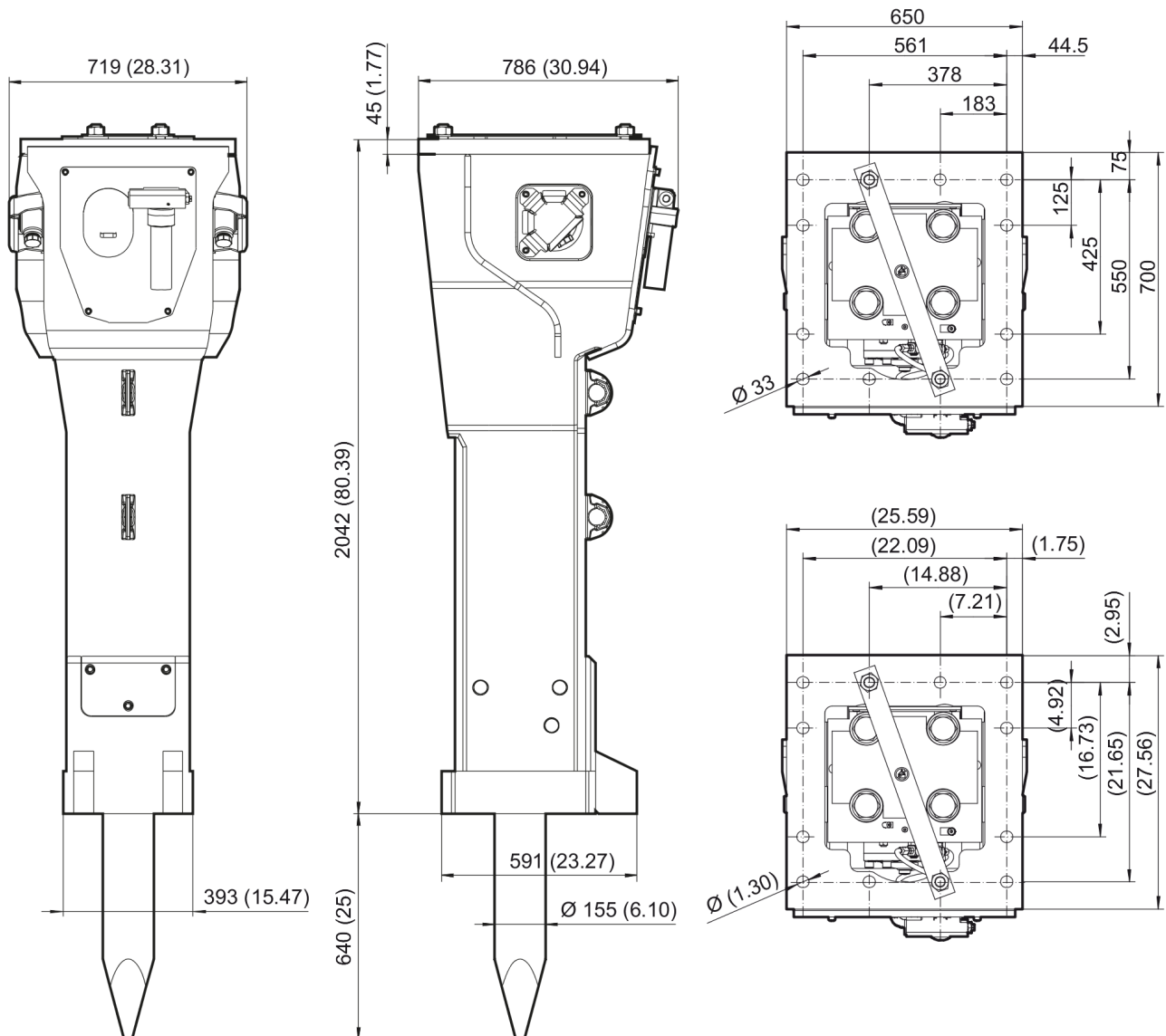
O | Open-ended wrench size 17, 19, 22

P | Allen key size 24

Q | Security bit HATCON

This page intentionally left blank

Mechanical Dimensions HB 2500



Refer to the DocMine web page for most up-to-date information. The printed information might be outdated.

Fri Mar 18 07:03:52 UTC 2022

This page intentionally left blank

[illegible]

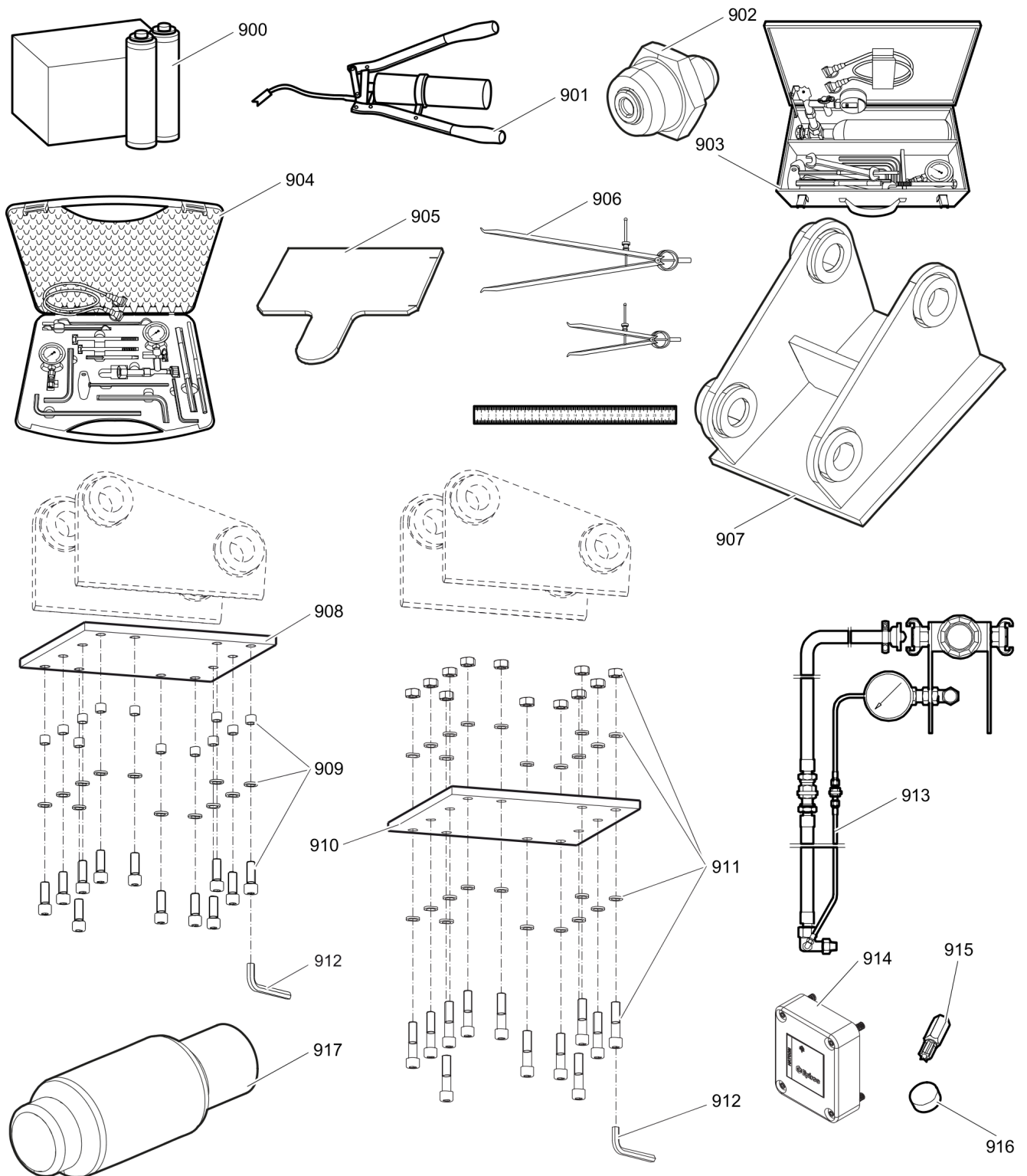
This page intentionally left blank

Options / accessories Hydraulic hoses

NO EXPLODED VIEW
AVAILABLE
FOR THIS BOM

| Item | Part No. | Name | Qty | L |
|------|------------|--|-----|---|
| - | 3363031190 | Hydraulic hose, I.D. 25 (1"), both ends JIC 1 5/8", length 2300 mm (91 in.) | 2 | |
| - | 3363031191 | Hydraulic hose, I.D. 25 (1"), both ends JIC 1 5/8", length 2800 mm (110 in.) | 2 | |

Options / accessories Optional equipment



Refer to the DocMine web page for most up-to-date information. The printed information might be outdated.

Fri Mar 18 07:03:55 UTC 2022

| Item | Part No. | Name | Qty | L |
|------|------------|---|-----|---|
| 900 | 3363122356 | Bio chisel paste cartridge, 12 x 550 g (1.2 lbs) | 1 | |
| 900 | 3363091200 | Chisel paste cartridge, 12 x 500 g (1.1 lbs) | 1 | |
| 901 | 3363034567 | GREASE PUMP | 1 | |
| 902 | 3360433774 | Grease nipple | 1 | |
| 903 | 3363089844 | Maintenance and charging box with nitrogen cylinder, 2 l, 0.43 gal (0.53 US gal) | 1 | |
| 904 | 3363094940 | Maintenance and charging box without nitrogen cylinder | 1 | |
| 905 | 3363099205 | Test gauge | 1 | |
| 906 | 3363094952 | Inside callipers upper wear bush | 1 | |
| 907 | | Adapter plate matching the carrier. Consult the authorized Customer Center/Dealer in your area. | 1 | |
| 908 | 3363099795 | Base plate with threaded inserts | 1 | |
| 909 | 3363087303 | Bolt kit | 1 | |
| 910 | 3363100699 | Base plate with through borings | 1 | |
| 911 | 3363094575 | Bolt kit | 1 | |
| 912 | 3360209445 | Allen key (22 mm) | 1 | |
| 913 | 3363090531 | Adapter kit for underwater applications | 1 | |
| 914 | 3315442500 | Retrofit kit HATCON | 1 | A |
| 915 | 3315439105 | Security bit HATCON | 1 | |
| 916 | 3315439106 | Magnet HATCON | 1 | |
| 917 | 3363097761 | Piston retainer | 1 | B |

Comments for Page: Optional equipment

A | with item 915 and 916

Hydraulic breakers are factory equipped with threads for attaching Retrofit kit HATCON

from s/n DEQ200289 - (HB 2500 with lower wear bush steel)

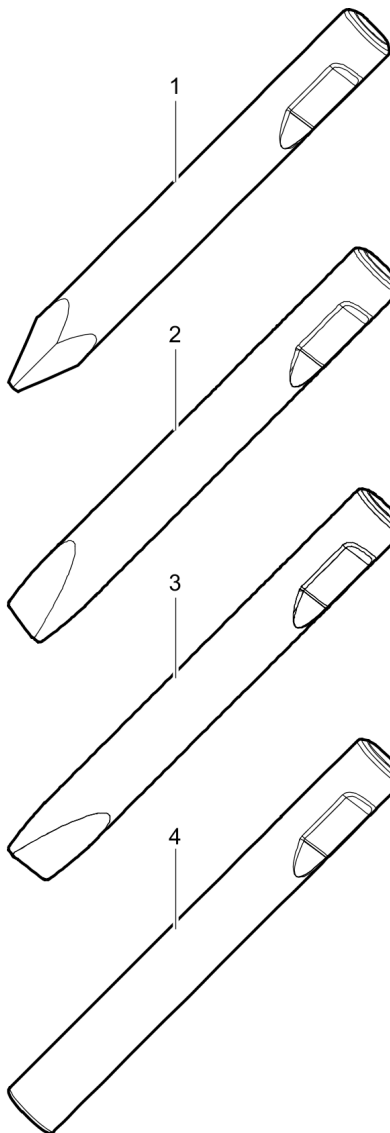
from s/n DEQ200235 - (HB 2500 with lower wear bush bronze)

from s/n DEQ200222 - (HB 2500 DP with lower wear bush steel)

from s/n DEQ200326 - (HB 2500 DP with lower wear bush bronze)

B | Consult the authorized Customer Center/Dealer in your area.

Options / accessories Working tools ClassicLine HB 2500

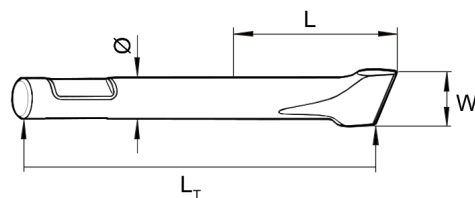


Ø=155 mm, L=640 mm, Lt=1310 mm, Wt=171.0 kg
Ø=6.10 inch, L=25 inch, LT=51.57 inch, Wt=374.8 lb

Ø=155 mm, W= 155 mm, L=640 mm, Lt=1310 mm, Wt=178.0 kg
Ø=6.10 inch, W=6.10 inch, L=25 inch, LT=51.57 inch, Wt=392.4 lb

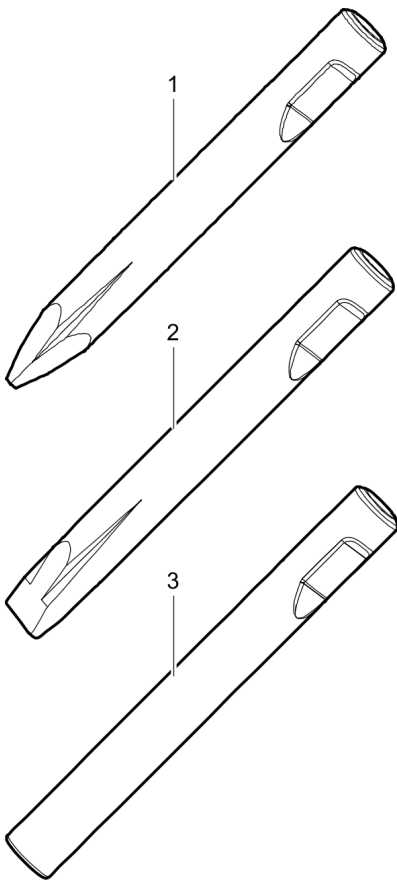
Ø=155 mm, W= 155 mm, L=640 mm, Lt=1310 mm, Wt=178.0 kg
Ø=6.10 inch, W=6.10 inch, L=25 inch, LT=51.57 inch, Wt=392.4 lb

Ø=155 mm, L=640 mm, Lt=1310 mm, Wt=190.0 kg
Ø=6.10 inch, L=25 inch, LT=51.57 inch, Wt=418.9 lb



| Item | Part No. | Name | Qty | L |
|------|------------|-------------------|-----|---|
| 1 | 3363119615 | Moil point | 1 | |
| 2 | 3363119616 | Chisel (cross) | 1 | |
| 3 | 3363119617 | Chisel (parallel) | 1 | |
| 4 | 3363119618 | Blunt tool | 1 | |

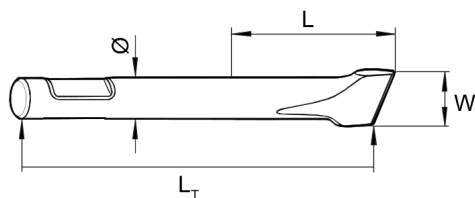
Options / accessories Working tools ProLine HB 2500



Ø=155 mm, L=600 mm, Lt=1350 mm, Wt=168.0 kg
Ø=6.10 inch, L=24 inch, LT=53.15 inch, Wt=370.4 lb

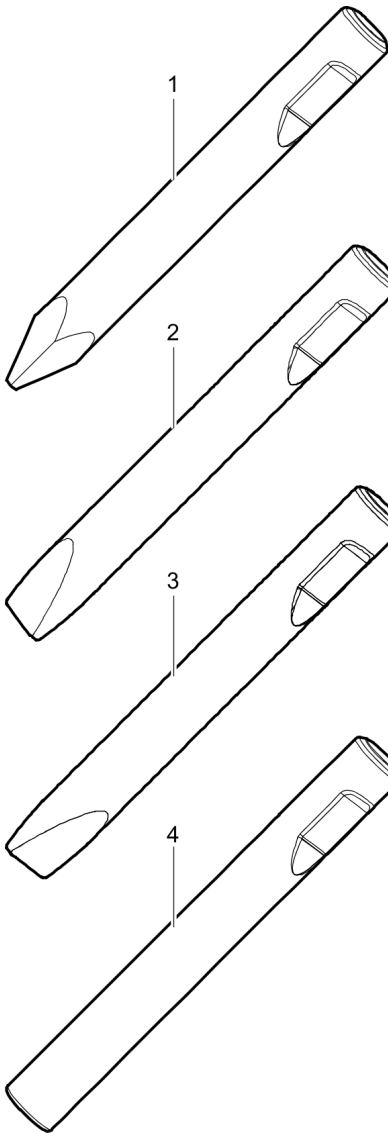
Ø=155 mm, W= 155 mm, L=600 mm, Lt=1350 mm, Wt=174.0 kg
Ø=6.10 inch, W=6.10 inch, L=24 inch, LT=53.15 inch, Wt=384.6 lb

Ø=155 mm, L=600 mm, Lt=1350 mm, Wt=196.0 kg
Ø=6.10 inch, L=24 inch, LT=53.15 inch, Wt=432.1 lb



| Item | Part No. | Name | Qty | L |
|------|------------|----------------|-----|---|
| 1 | 3363118362 | Moil point | 1 | |
| 2 | 3363118363 | Chisel (cross) | 1 | |
| 3 | 3363097763 | Blunt tool | 1 | |

Options / accessories Working tools ClassicLine HB 2500 DP

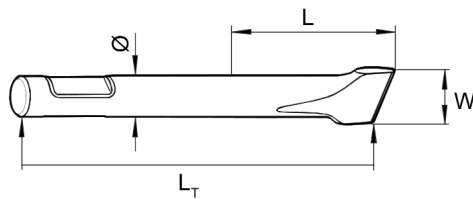


Ø=155 mm, L=600 mm, Lt=1310 mm, Wt=171.0 kg
Ø=6.10 inch, L=24 inch, LT=51.57 inch, Wt=374.8 lb

Ø=155 mm, W= 155 mm, L=600 mm, Lt=1310 mm, Wt=178.0 kg
Ø=6.10 inch, W=6.10 inch, L=24 inch, LT=51.57 inch, Wt=392.4 lb

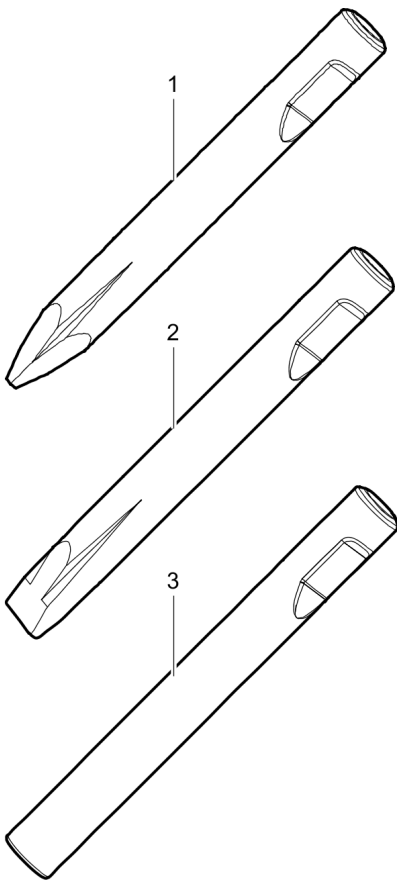
Ø=155 mm, W= 155 mm, L=600 mm, Lt=1310 mm, Wt=178.0 kg
Ø=6.10 inch, W=6.10 inch, L=24 inch, LT=51.57 inch, Wt=392.4 lb

Ø=155 mm, L=600 mm, Lt=1310 mm, Wt=190.0 kg
Ø=6.10 inch, L=24 inch, LT=51.57 inch, Wt=418.9 lb



| Item | Part No. | Name | Qty | L |
|------|------------|-------------------|-----|---|
| 1 | 3363119615 | Moil point | 1 | |
| 2 | 3363119616 | Chisel (cross) | 1 | |
| 3 | 3363119617 | Chisel (parallel) | 1 | |
| 4 | 3363119618 | Blunt tool | 1 | |

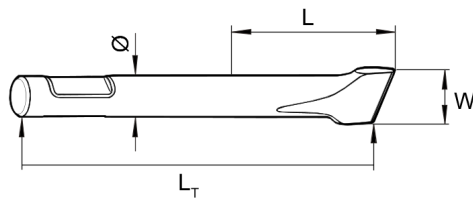
Options / accessories Working tools ProLine HB 2500 DP



Ø=155 mm, L=560 mm, Lt=1350 mm, Wt=168.0 kg
Ø=6.10 inch, L=22 inch, LT=53.15 inch, Wt=370.4 lb

Ø=155 mm, W= 155 mm, L=560 mm, Lt=1350 mm, Wt=174.0 kg
Ø=6.10 inch, W=6.10 inch, L=22 inch, LT=53.15 inch, Wt=384.6 lb

Ø=155 mm, L=560 mm, Lt=1350 mm, Wt=196.0 kg
Ø=6.10 inch, L=22 inch, LT=53.15 inch, Wt=432.1 lb



| Item | Part No. | Name | Qty | L |
|------|------------|----------------|-----|---|
| 1 | 3363118362 | Moil point | 1 | |
| 2 | 3363118363 | Chisel (cross) | 1 | |
| 3 | 3363097763 | Blunt tool | 1 | |

Any unauthorized use or copying of the contents or any part thereof is prohibited.
This applies in particular to trademarks, model denominations, part numbers, and drawings.