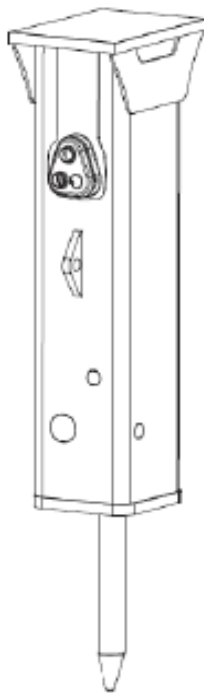


EC 80T

Spare parts list

Hydraulic breakers

EC 80T s/n BES141886 –



General information

This spare parts list applies to the following:

Part number	Description
8460050058	EC 80T
8460050114	EC 80T
8460050139	EC 80T HATCON
8460050146	EC 80T HATCON LTE

Use only authorized parts. Any damage or malfunction caused by the use of unauthorized parts is not covered by Warranty or Product Liability. Any unauthorized use or copying of the contents or any part thereof is prohibited. This applies in particular to trademarks, model denominations, part numbers, and drawings.

Instructions for use

This spare parts list contains no safety regulations and is merely intended to assist in the ordering of spare parts.

For information about operating, servicing, or repairing, the relevant Safety and operating instructions must be consulted at all costs.

Please observe the safety instructions listed in the relevant Safety and operating instructions!

Service, repair and wear part kits

Label kit	1
Seal kit	3

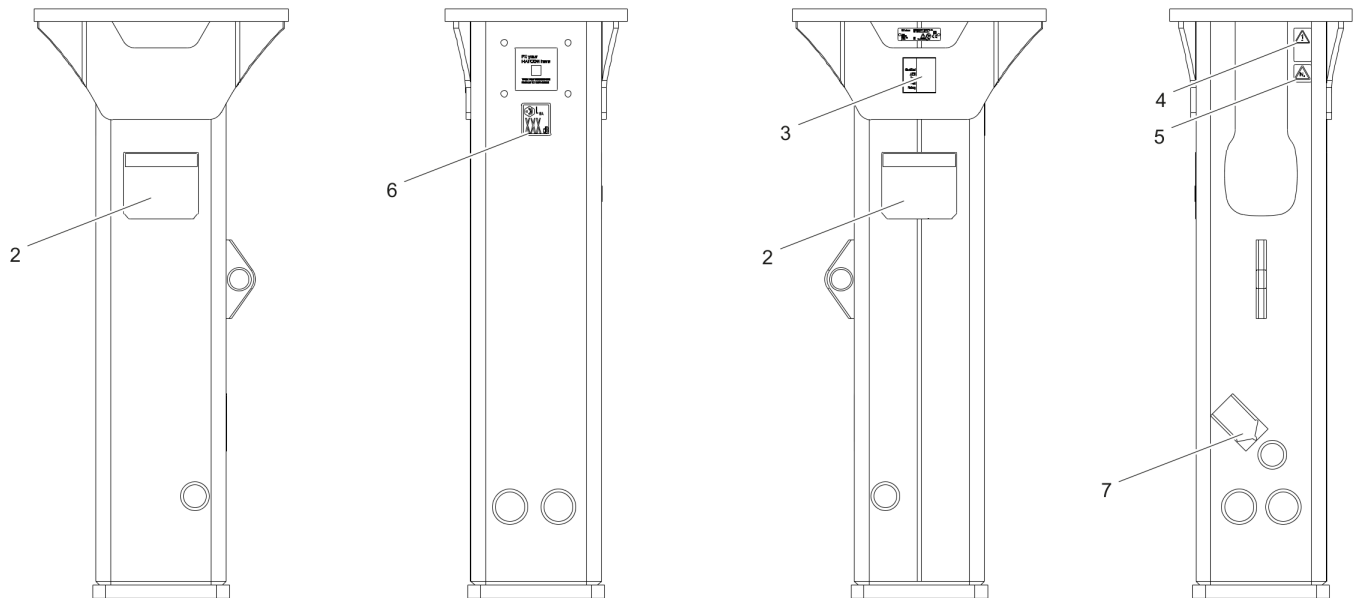
Mechanical

Hydraulic breaker	5
Percussion unit	7
HATCON (Horizontal)	9
Tightening torques	11
Main dimensions, mm (in.)	13
Assembly instruction	14

Options/accessories

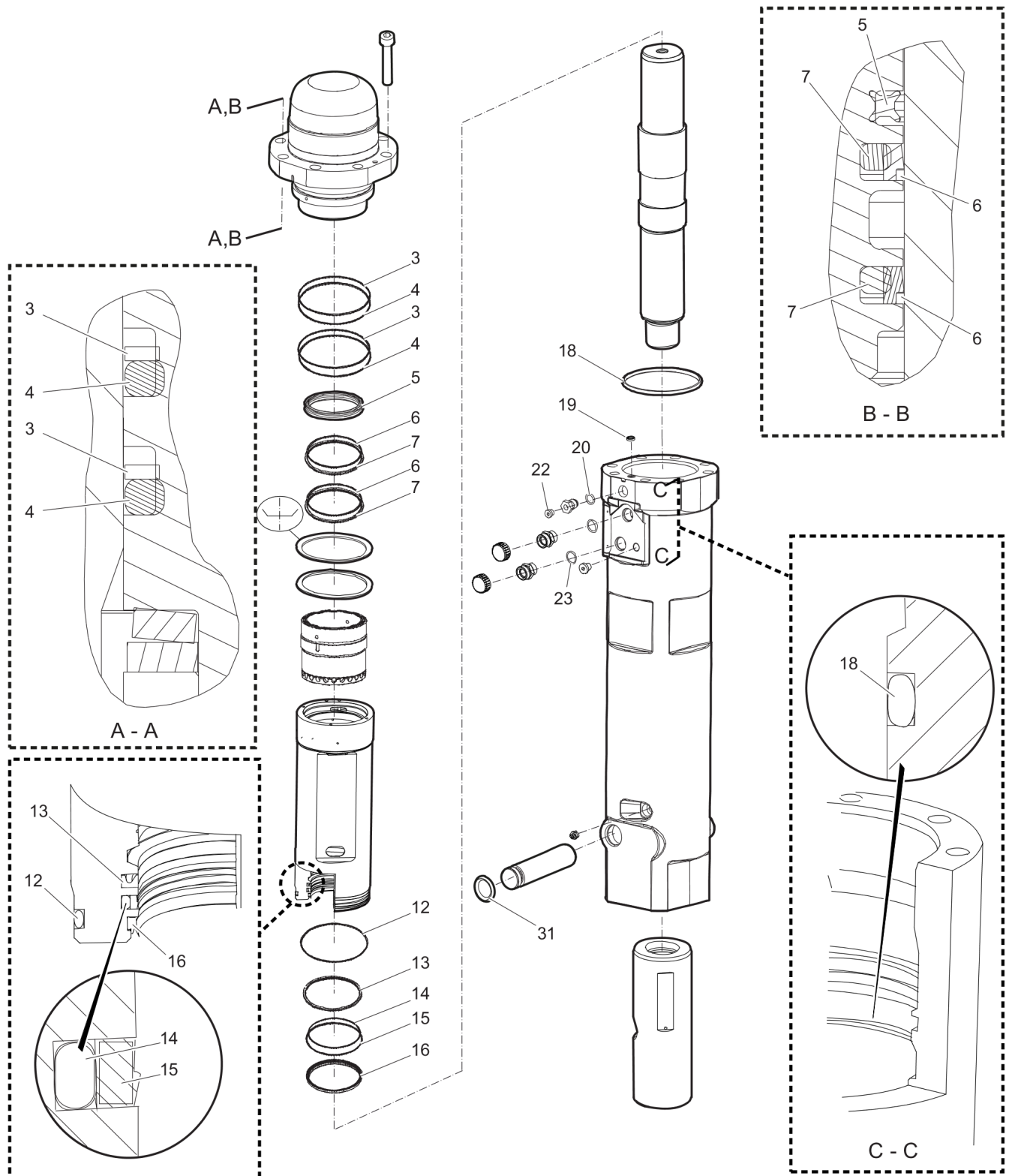
Hydraulic hose	16
Optional equipment	19
Working tools	21

Service, repair and wear part kits Label kit



Item	Part No.	Name	Qty	L
Kit	3382070012	LABEL KIT	1	
2		PRODUCT LABEL	2	
3		AEM SIGN	1	
4		SAFETY LABEL	1	
5		SAFETY LABEL	1	
6		SOUND POWER LABEL	1	
7		LABEL - LUBRICATING SYMBOL	1	

Service, repair and wear part kits Seal kit



Refer to the DocMine web page for most up-to-date information. The printed information might be outdated.

Fri Jun 02 04:42:13 UTC 2023

Item	Part No.	Name	Qty	L
Kit	3382070011	SEAL KIT	1	
3	0661150127	BACK-UP RING	2	A
4	3361192007	O-RING	2	B
5	3361192002	SEAL	1	
6	3361192003	SEAL	2	
7	3361192004	O-RING	2	C
12	3361192011	O-RING	1	D
13	3361192013	SEAL	1	E
14	3361192015	O-RING	1	F
15	3361192014	SEAL	1	
16	3361192016	WIPER	1	G
18	3315296625	SEAL	1	
19	3115329002	SEAL RING	1	
20	0663925100	O-RING	1	H
22	3360478426	THREADED PLUG	1	
23	3361192067	O-RING	2	
31	0663212005	O-RING	1	I
-	3361192066	O-RING	1	J

Comments for Page: Seal kit

(L)OCAL REMARKS

A | \varnothing 130.89 mm (\varnothing 5.15 in.)

B | \varnothing 132.75 x 5.33 mm (\varnothing 5.23 x 0.21 in.)

C | \varnothing 81.92 x 5.33 mm (\varnothing 3.23 x 0.21 in.)

D | \varnothing 126.37 x 5.33 mm (\varnothing 4.98 x 0.21 in.)

E | 70 x 85.1 x 6.3 mm (2.76 x 3.35 x 0.25 in.)

F | \varnothing 85.09 x 5.33 mm (\varnothing 3.35 x 0.21 in.)

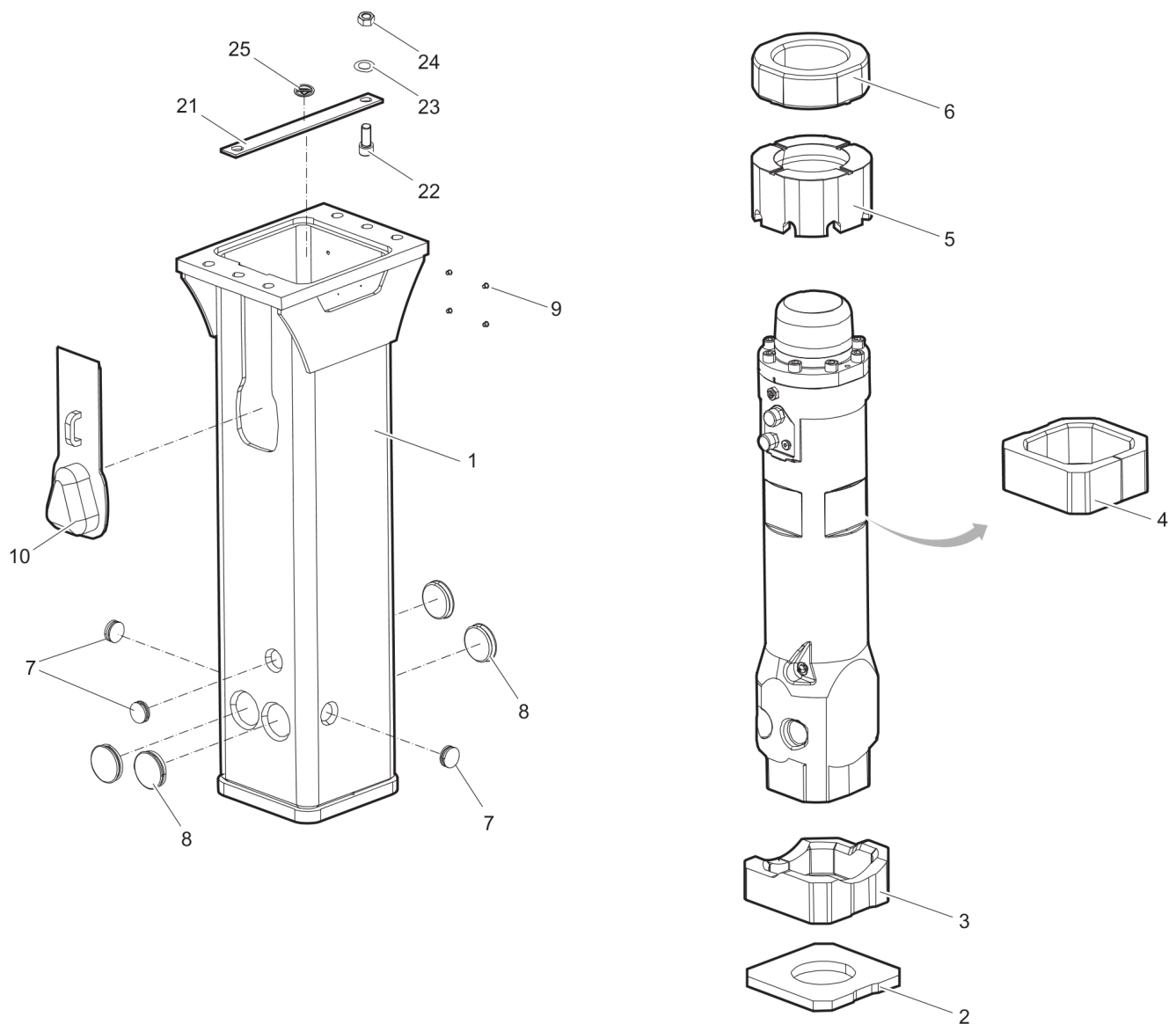
G | 80 x 90 x 6.3 mm (3.15 x 3.54 x 0.25 in.)

H | \varnothing 15.08 x 2.62 mm (\varnothing 0.59 x 0.10 in.)

I | \varnothing 32 x 5.7 mm (\varnothing 1.26 x 0.22 in.) NBR 90°IRH

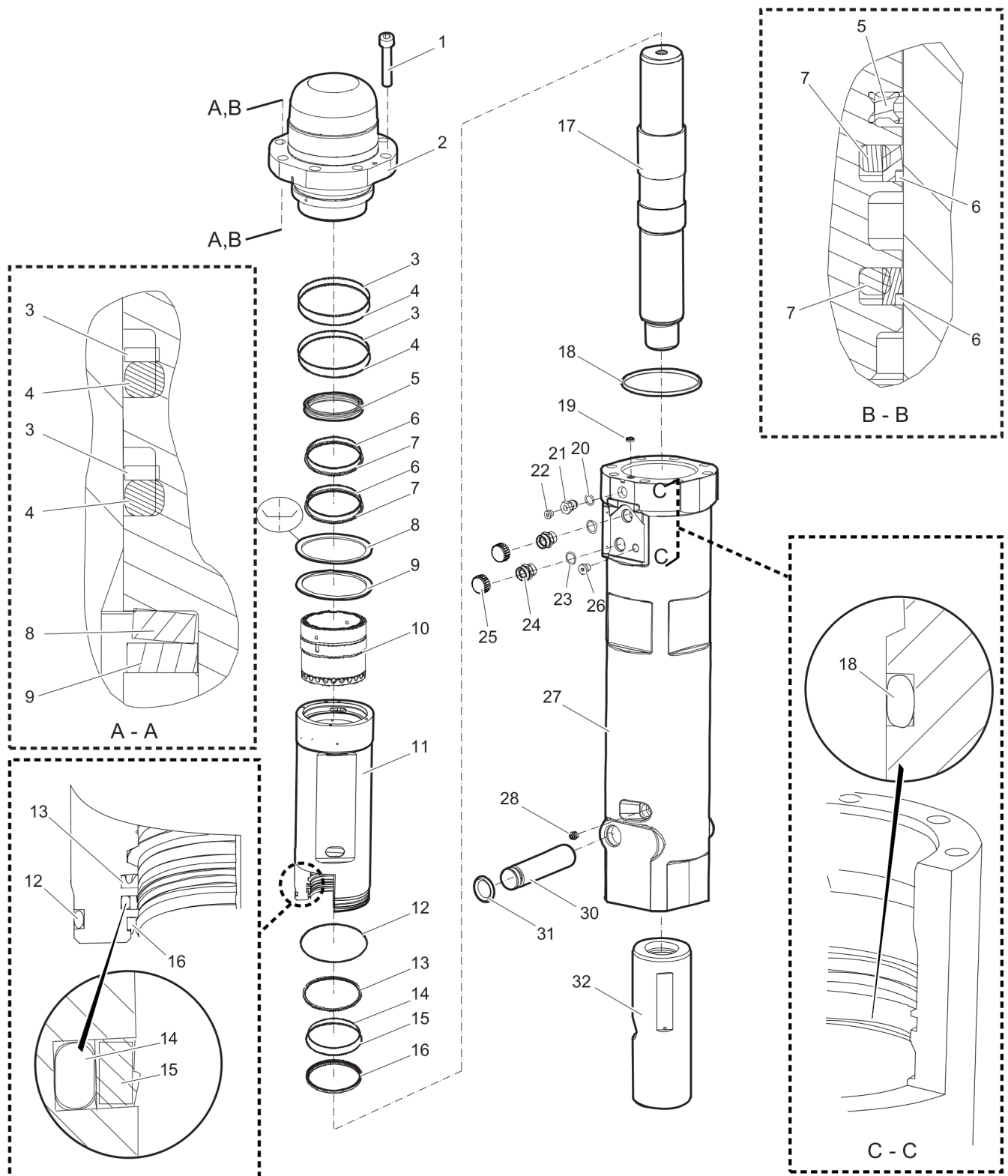
J | \varnothing 16.36 x 2.21 mm (\varnothing 0.64 x 0.09 in.)

Mechanical Hydraulic breaker



Item	Part No.	Name	Qty	L
1	3362150002	BREAKER BOX	1	
2	3362450001	SHOCK ABSORBER	1	
3	3315406740	GUIDE PLATE	2	
4	3315406717	GUIDE PLATE	1	
5	3315422220	SPACER	1	
6	3315422210	SHOCK ABSORBER	1	
7	3362491004	PLUG	3	
8	3362491003	PLUG	4	
9	3315439145	PROTECTIVE PLUG HATCON	4	
10	3362491002	COVER	1	
21	3362491016	TRANSPORT SAFETY DEVICE	1	
22	0211155703	HEX SOCK SCREW	2	
23	3361850748	PAIR OF LOCK WASHERS	4	
24	3360103251	NUT	2	
25	3363091872	LABEL TRANSPORT SAFETY DEVICE	1	

Mechanical Percussion unit

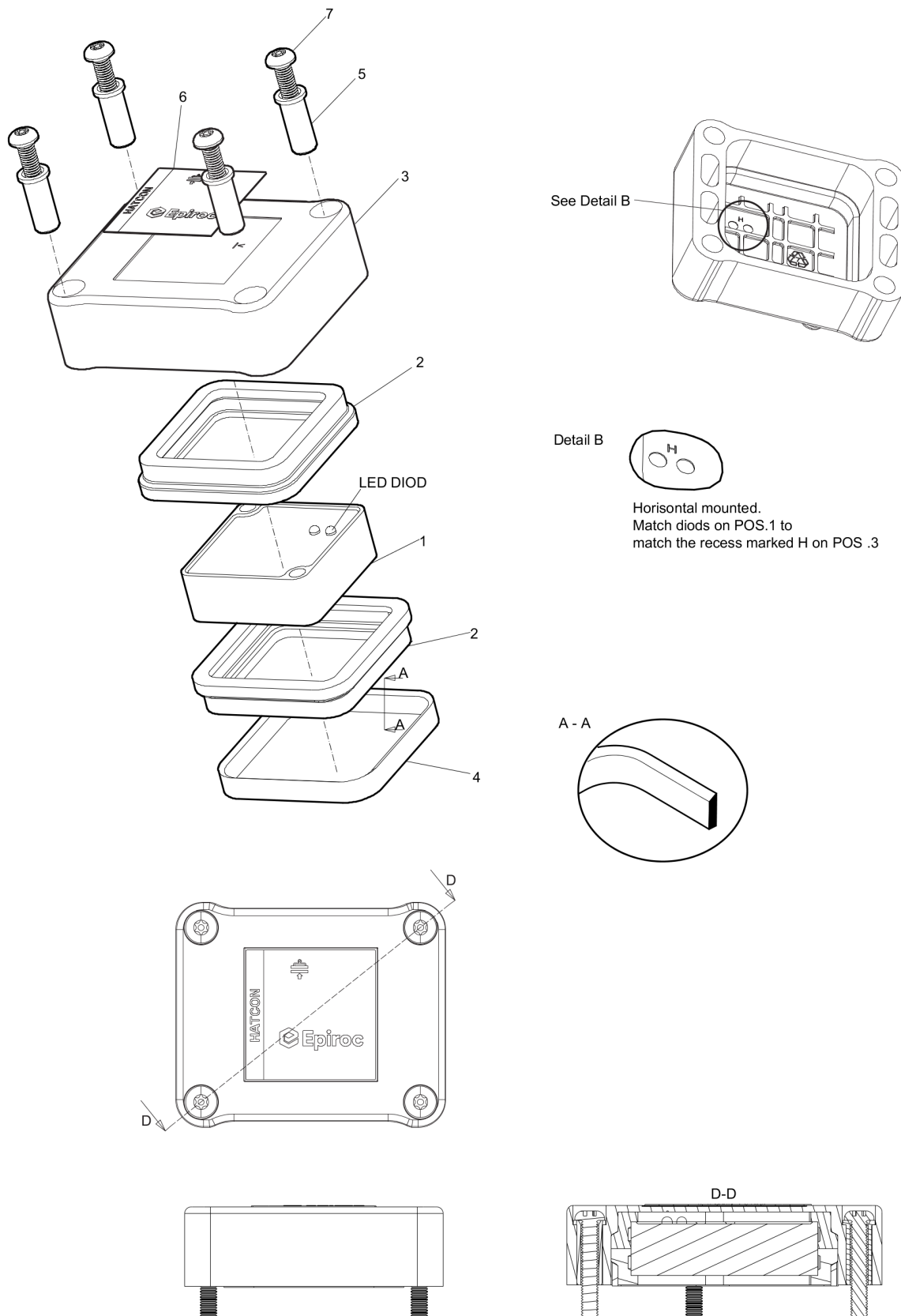


Refer to the DocMine web page for most up-to-date information. The printed information might be outdated.

Fri Jun 02 04:42:16 UTC 2023

Item	Part No.	Name	Qty	L
1	0211148303	SCREW	8	
2	3315411000	BACK HEAD	1	
3	0661150127	BACK-UP RING	2	
4	3361192007	O-RING	2	
5	3361192002	SEAL	1	
6	3361192003	SEAL	2	
7	3361192004	O-RING	2	
8	3361150004	PLATE SPRING	1	
9	3361150005	SPACER	1	
10	3361150106	CONTROL VALVE	1	
11	3361150002	CYLINDER BUSH	1	
12	3361192011	O-RING	1	
13	3361192013	SEAL	1	
14	3361192015	O-RING	1	
15	3361192014	SEAL	1	
16	3361192016	WIPER	1	
17	3315332830	PISTON	1	
18	3315296625	SEAL	1	
19	3115329002	SEAL RING	1	
20	0663925100	O-RING	1	
21	3363087286	FILLING VALVE, complete	1	
22	3360478426	THREADED PLUG	1	
23	3361192067	O-RING	2	
24	3361031476	FITTING	2	
25	3361353486	CAP	2	
26	3363066963	PLUG	1	
27	3315408005	CYLINDER HOUSING	1	
28	3360433774	GREASE NIPPLE	1	
30	3315418110	TOOL RETAINER	1	
31	0663212005	O-RING	1	
32	3361150012	WEAR BUSH	1	

Mechanical HATCON (Horizontal)

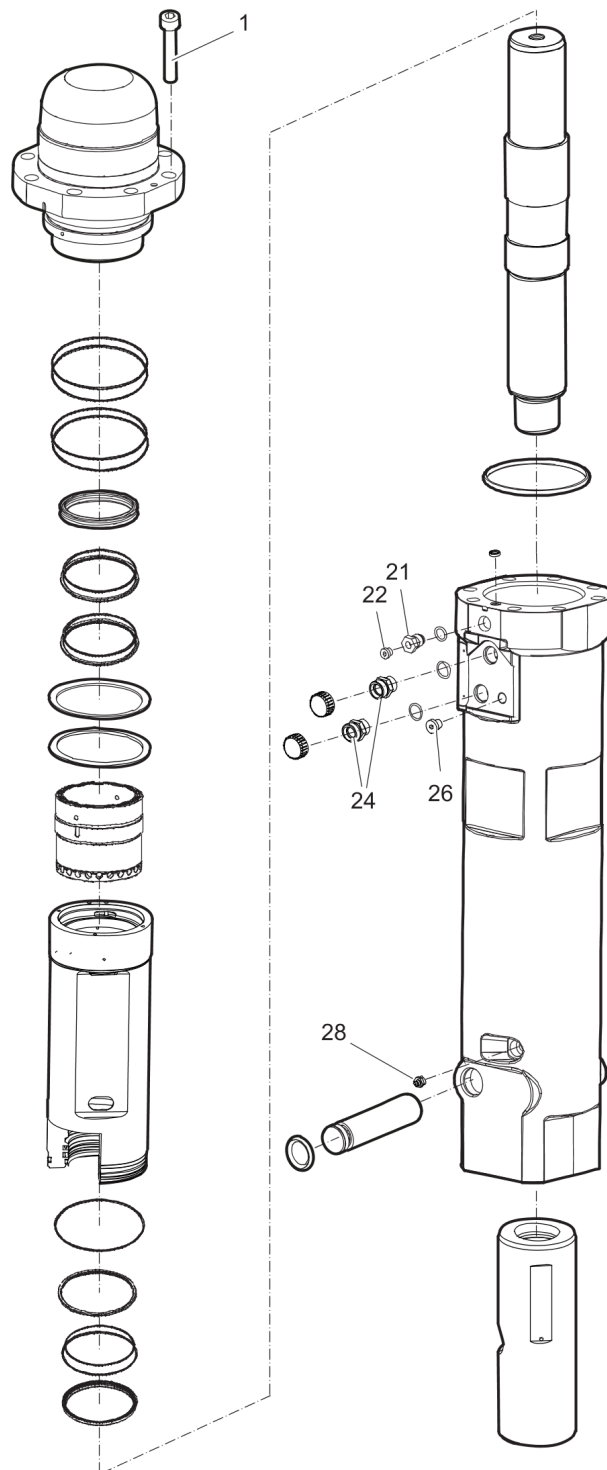


Refer to the DocMine web page for most up-to-date information. The printed information might be outdated.

Fri Jun 02 04:42:17 UTC 2023

Item	Part No.	Name	Qty	L
1		TRACKING MODULE HATCON	1	
2	3315439130	DAMPER HATCON	2	
3	3315439110	HOUSING TYPE 1 HATCON	1	
4	3315439140	LOCK RING HATCON	1	
5	3315439120	SLEEVE HATCON	4	
6	3315439100	PRODUCT LABEL HATCON	1	
7	3315442610	SCREW HATCON	4	

Mechanical Tightening torques



Item	Part No.	Name	Qty	L
1	-	SCREW - 200 Nm (148 ft lbf)	-	A
21	-	FILLING VALVE - 130 Nm (96 ft lbf)	-	
22	-	THREADED PLUG - 20 Nm (15 ft lbf)	-	
24	-	FITTING - 90 Nm (66 ft lbf)	-	
26	-	PLUG - 30 Nm (22 ft lbf)	-	
28	-	GREASE NIPPLE - 20 Nm (15 ft lbf)	-	

Comments for Page: Tightening torques

(L)OCAL REMARKS

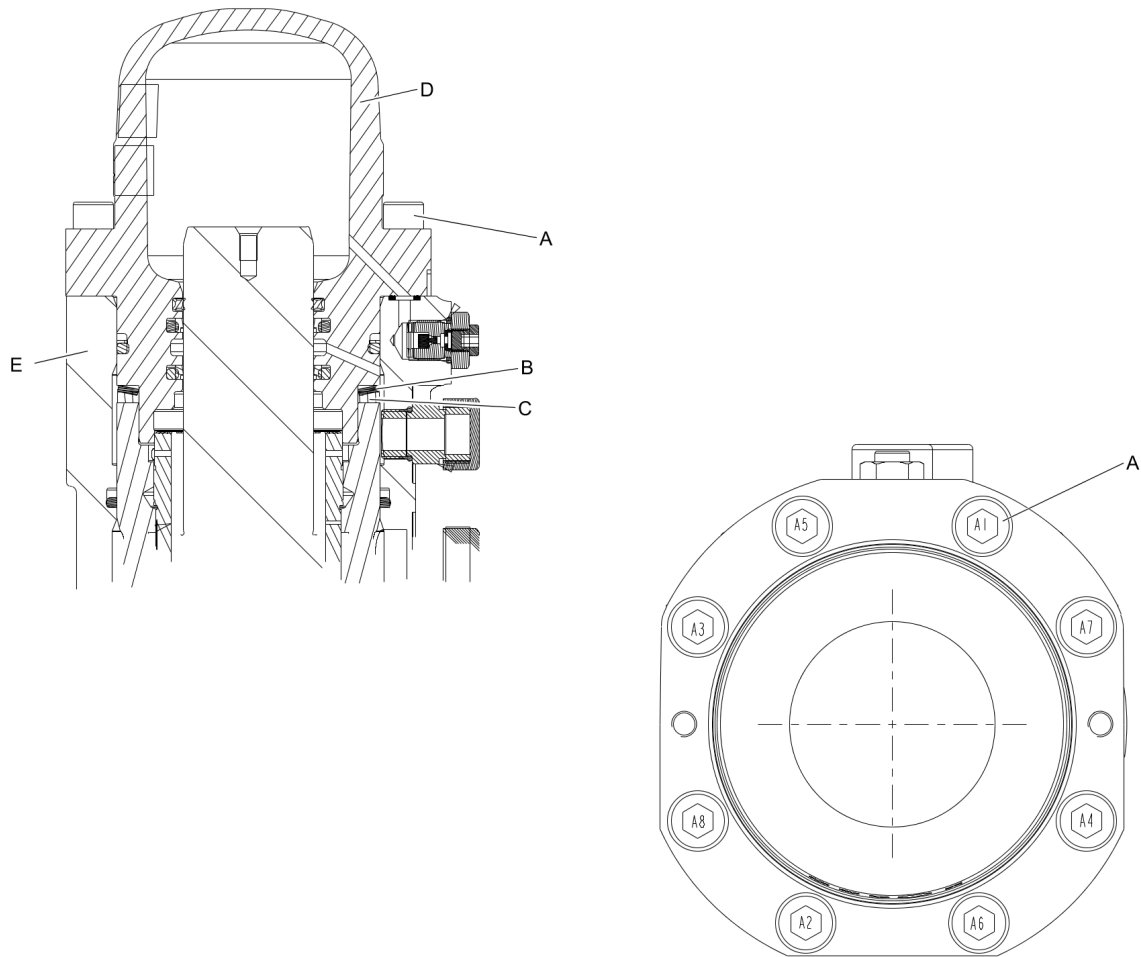
A | see "Assembly instruction"

use MOLYKOTE

[illegible]

This page intentionally left blank

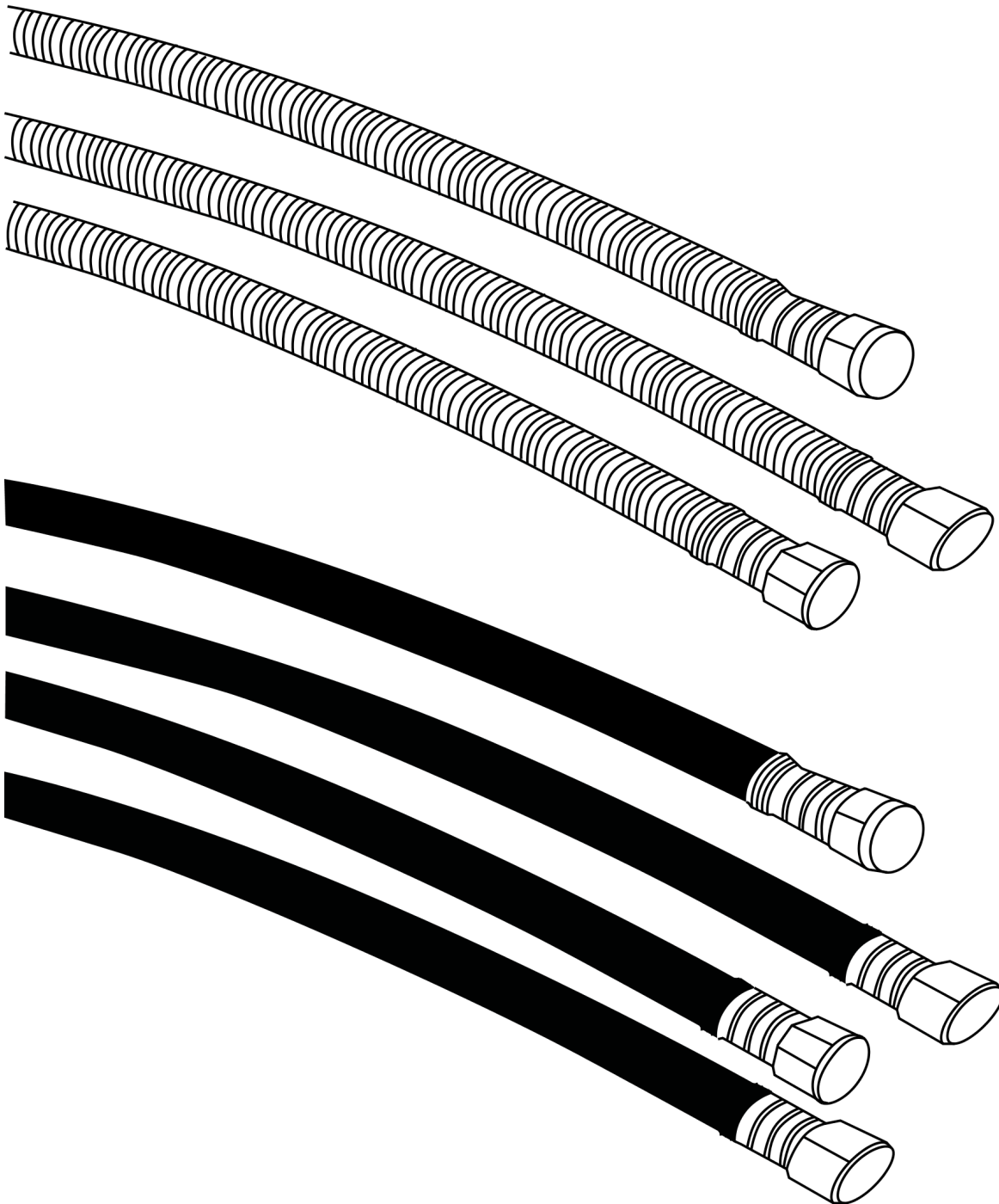
Mechanical Assembly instruction



1. Make sure the spring plate (B) and spacer (C) are centered before mounting the back head (D).
2. Press the back head (D) down on the spring plate (B) and spacer (C).
3. Grease the screws (A) with Molykote® 1000 (Molykote is a registered trademark of Dow Corning Corporation), and manually fit them on the back head (D)
4. Torque the screws (A) in the order from A1 to A8 in one step.

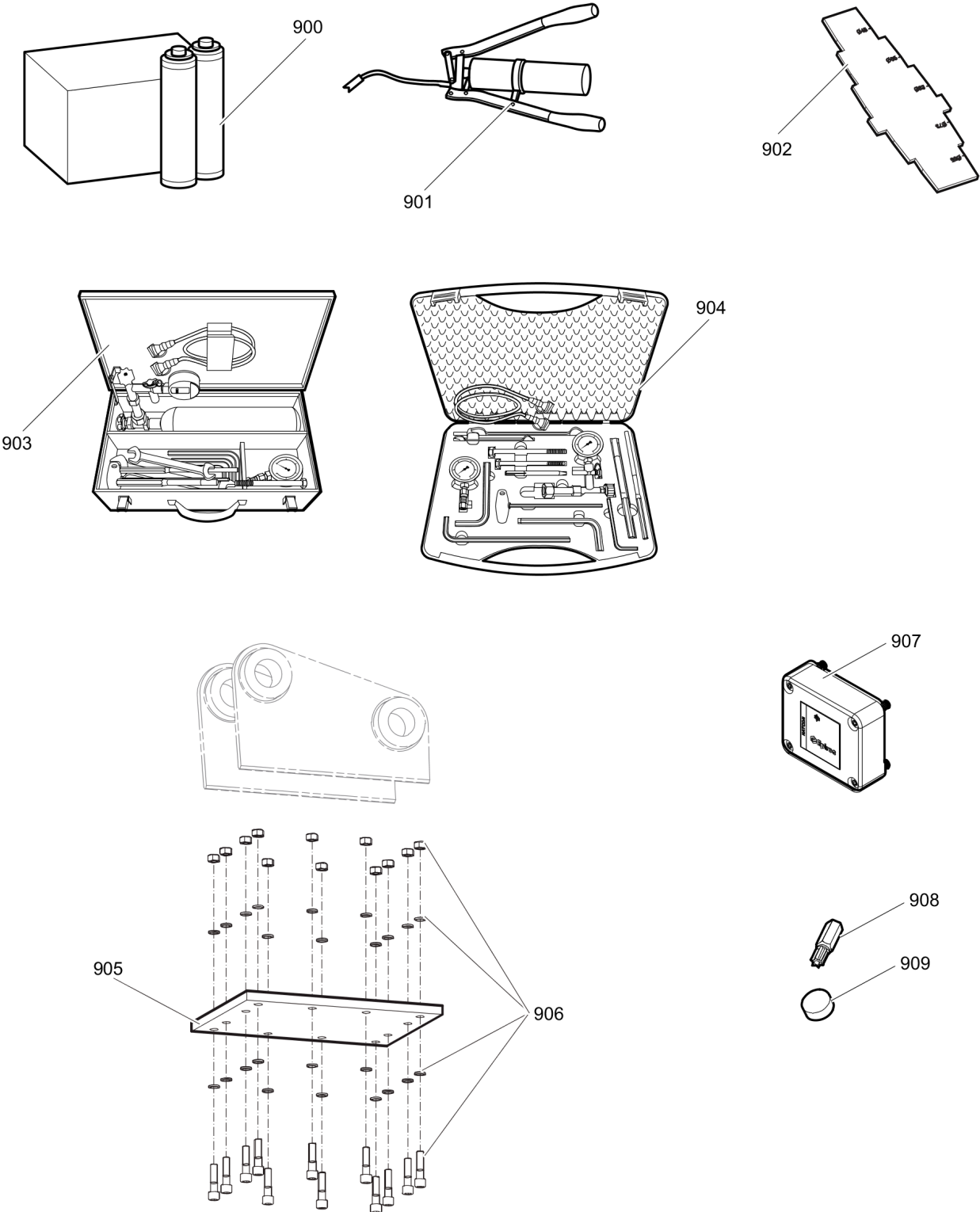
This page intentionally left blank

Options/accessories Hydraulic hose



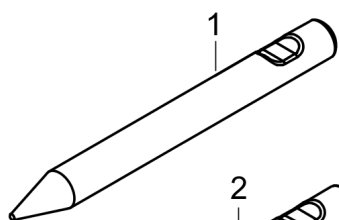
Item	Part No.	Name	Qty	L
	-	STANDARD CONNECTION HOSES	1	
-	3363115423	HYDRAULIC HOSE, both ends 18 L (M26x1.5) length 1750 mm (68 in.)	1	
-	3363491002	HYDRAULIC HOSE, both ends 18 L (M26x1.5) length 1500 mm (59 in.)	1	
-	3363101424	HYDRAULIC HOSE, I.D. 16 mm (0.63 in.) 18 L (M26 x 1.5), length 2000 mm (78.74 in.)	1	
-	3363115425	HYDRAULIC HOSE, both ends 18 L (M26x1.5) length 2400 mm (95 in.)	1	
	-	Heavy duty connction hoses with spring protection	1	
-	3360995717	HYDRAULIC HOSE, both ends 18 L (M26 x 1.5) length 1500 mm (59 in.)	1	
-	3363115426	HYDRAULIC HOSE, both ends 18 L (M26x1.5) length 1750 mm (68 in.)	1	
-	3362235159	HYDRAULIC HOSE, both ends 18 L (M26 x 1.5) length 2000 mm (79 in.)	1	
-	3363083313	HYDRAULIC HOSE, both ends 18 L (M26 x 1.5) length 2400 mm (95 in.)	1	

Options/accessories Optional equipment

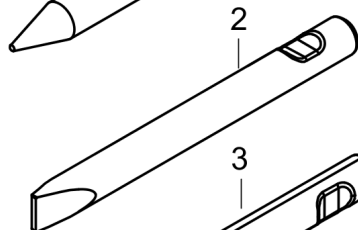


Item	Part No.	Name	Qty	L
900	3363094913	CHISEL PASTE CARTRIDGE FOR GREASE GUN, 12 x 400 g (12 x 0.88 lbs)	1	
901	0909107100	LUBRICAT.GUN	1	
902	3315303700	TEST GAUGE WEAR BUSH	1	
903	3363089844	MAINTENANCE AND CHARGING BOX, with nitrogen cylinder 2 l (0.43 gal (0.53 US gal))	1	
904	3363094940	MAINTENANCE AND CHARGING BOX without nitrogen cylinder	1	
905	3363099701	BASE PLATE WITH THROUGH BORINGS	1	
906	3363106508	BOLT KIT	1	
907	3315442506	HATCON KIT EC (3G)	1	
907	3315442526	HATCON KIT EC (LTE)	1	
908	3315439105	SECURITY BIT HATCON	1	
909	3315439106	MAGNET HATCON	1	

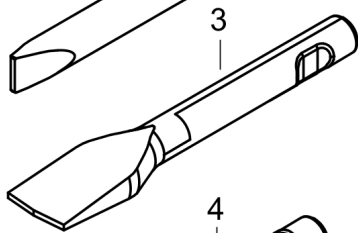
Options/accessories Working tools



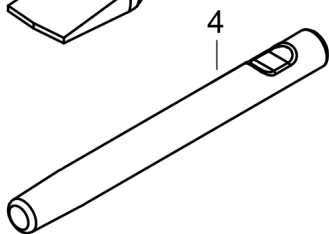
L=415 mm, Lt=760 mm, Wt=26.3 kg
L=16.34 inch, Lt=29.92 inch, Wt=58 lb



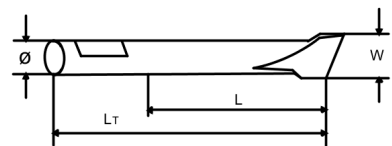
ø=80 mm, L=415 mm, Lt=760 mm, Wt=27.3 kg
W=3.15 inch, L=16.34 inch, Lt=29.92 inch, Wt=60.2 lb



W=200 mm, L=460 mm, Lt=745 mm, Wt=31.9 kg
W=7.87 inch, L=18.11 inch, Lt=29.33 inch, Wt=70.3 lb



L=415 mm, Lt=760 mm, Wt=28.9 kg
L=16.34 inch, Lt=29.92 inch, Wt=63.7 lb



Item	Part No.	Name	Qty	L
1	3083342432	MOIL POINT (conical)	1	
2	3083342433	CHISEL (cross)	1	
3	3363150005	ASPHALT CUTTER (cross)	1	
4	3083342434	BLUNT TOOL	1	

Any unauthorized use or copying of the contents or any part thereof is prohibited.
This applies in particular to trademarks, model denominations, part numbers, and drawings.