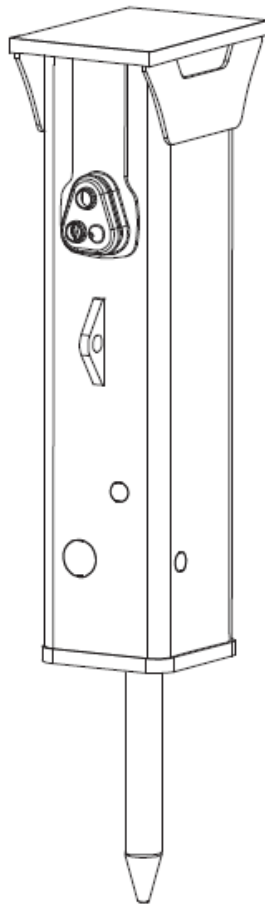


Spare parts list

Hydraulic breakers

EC 70T s/n BES094711 - BES140546



General information

This spare parts list applies to the following:

Part number	Description
8460050057	EC 70T
8460050086	EC 70T No sticker

Use only authorized parts. Any damage or malfunction caused by the use of unauthorized parts is not covered by Warranty or Product Liability. Any unauthorized use or copying of the contents or any part thereof is prohibited. This applies in particular to trademarks, model denominations, part numbers, and drawings.

Instructions for use

This spare parts list contains no safety regulations and is merely intended to assist in the ordering of spare parts.

For information about operating, servicing, or repairing, the relevant Safety and operating instructions must be consulted at all costs.

Please observe the safety instructions listed in the relevant Safety and operating instructions!

Service, repair and wear part kits

Seal kit	1
Label kit	3

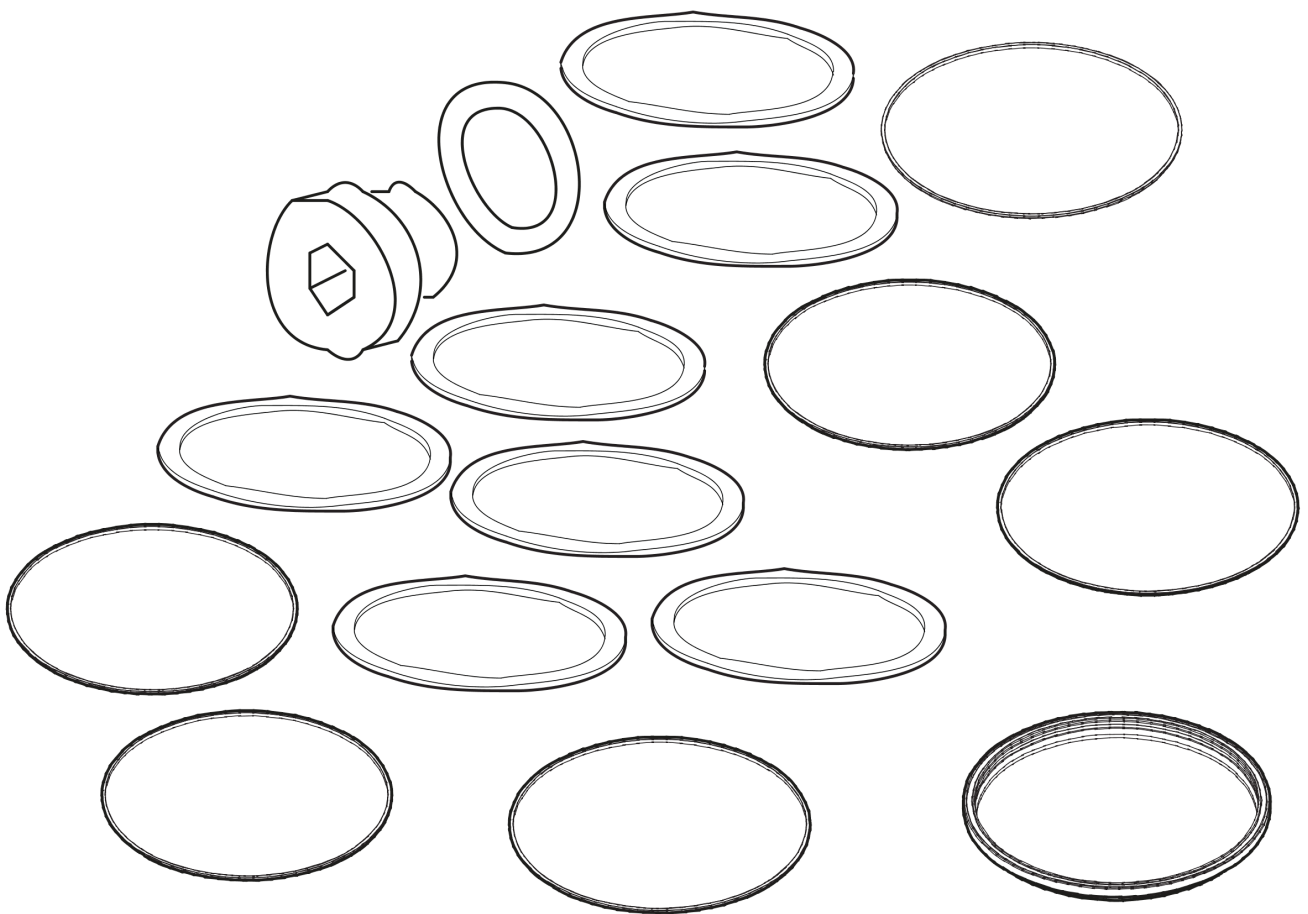
Mechanical

Breaker body penta box (Valid to BES097220)	5
Breaker body square box (Valid from BES097221)	7
Impact mechanism (Valid to BES110277)	9
Impact mechanism (Valid from BES110278)	11
Tightening torques	13
Assembly instruction	15
Main dimensions, mm (in.)	16

Options/accessories

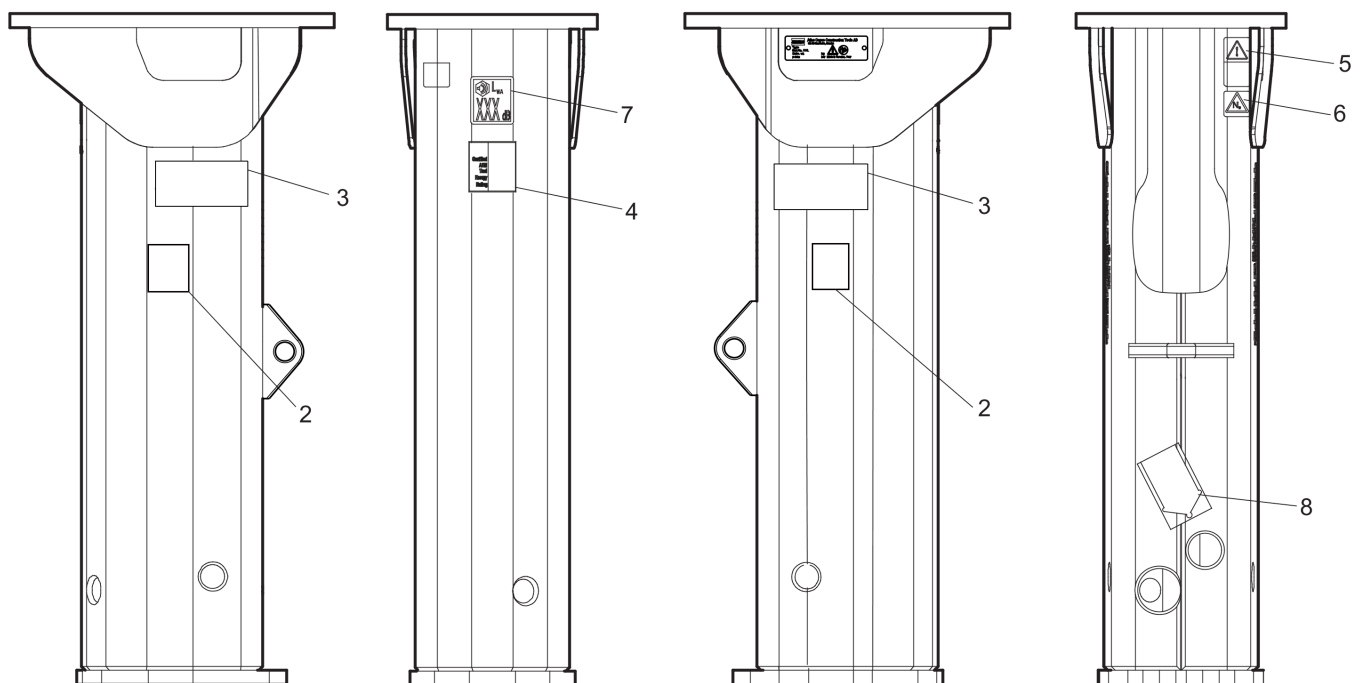
Optional equipment	18
Working tools	21
Hydraulic hose	23

Service, repair and wear part kits Seal kit



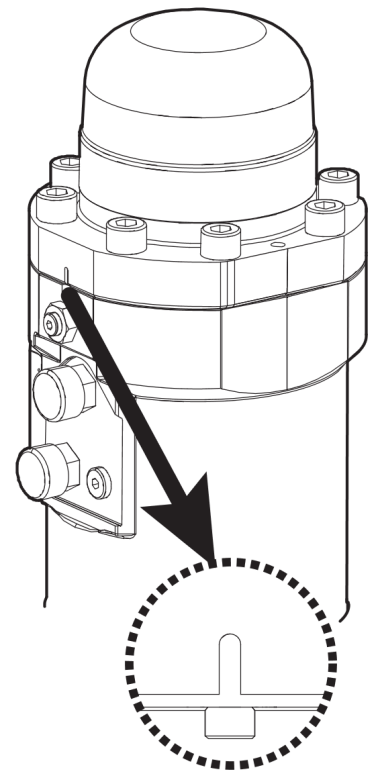
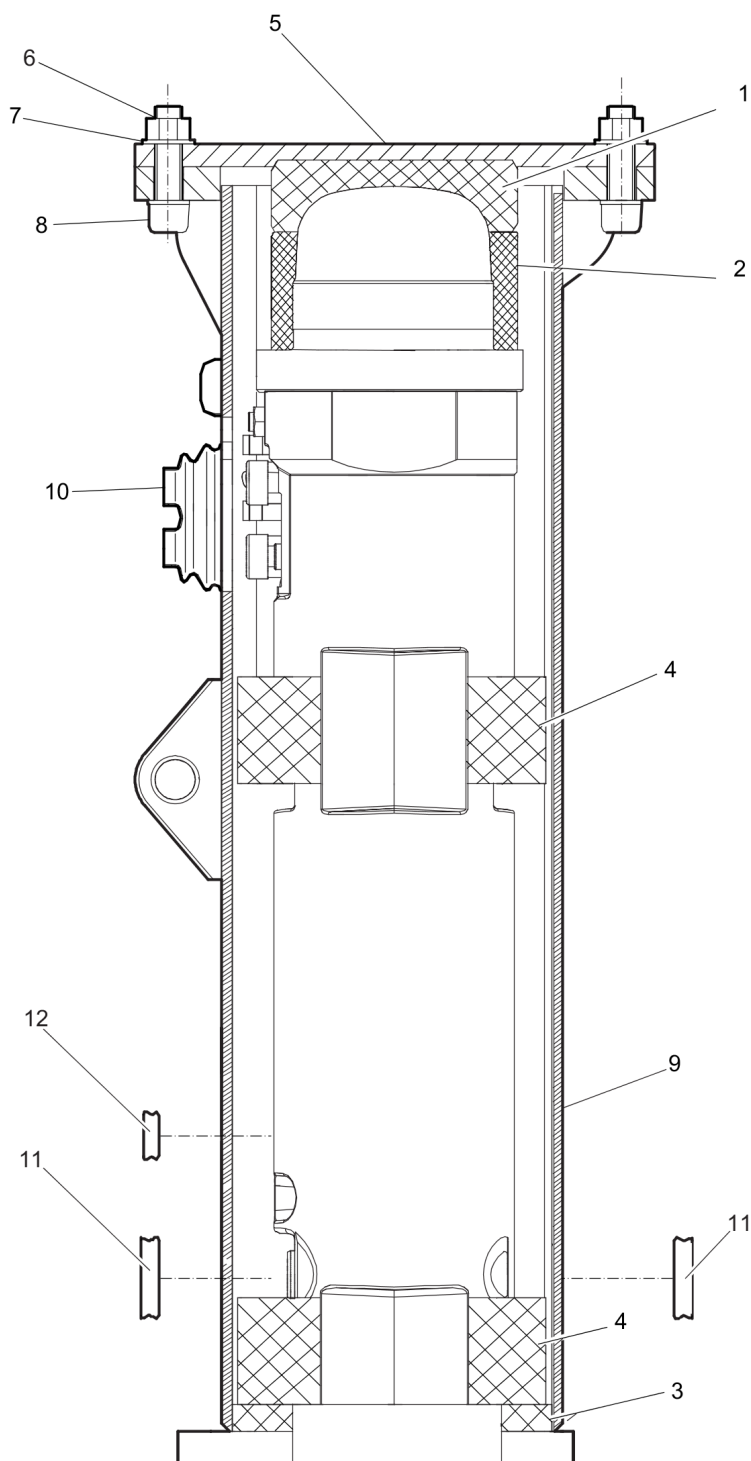
Item	Part No.	Name	Qty	L
-	3382070009	Seal kit	1	
-	0663212006	O-ring, 26 x 6 mm	1	A
-	0663925100	O-ring, 15.08x2.62	1	
-	3115329002	SEAL RING	1	
-	3360478426	Threaded plug	1	
-	3361192017	Seal	1	
-	3361192018	Seal	2	
-	3361192019	O-ring, $\varnothing 72.39 \times 5.33$ mm , $\varnothing 2.85 \times 0.21$ in.	2	
-	3315296620	One piece seal	1	
-	3361192022	O-ring, $\varnothing 116.84 \times 5.33$ mm , $\varnothing 4.60 \times 0.21$ in.	2	
-	3361192023	Back-up ring, $\varnothing 118.19 \times 4.65$ mm , $\varnothing 4.65 \times 0.18$ in.	2	
-	3361192025	O-ring, $\varnothing 113.67 \times 5.33$ mm, 90 shore (NBR)	1	
-	3361192027	Seal, 70 x 85.1 x 6.3 mm , 2.76 x 3.35 x 0.25 in.	1	
-	3361192015	O-ring, 85.09 x 5.33 mm	1	
-	3361192029	O-ring, 75.57 x 5.33 mm , 2.98 x 0.21 in.	1	
-	3361192030	Wiper, 70 x 80 x 6.3 x 9 mm , 2.76 x 3.15 x 0.25 x 0.35 in.	1	
-	3361192066	O-ring, 16.36x2.21	1	
-	3361192067	O-ring	1	

Service, repair and wear part kits Label kit

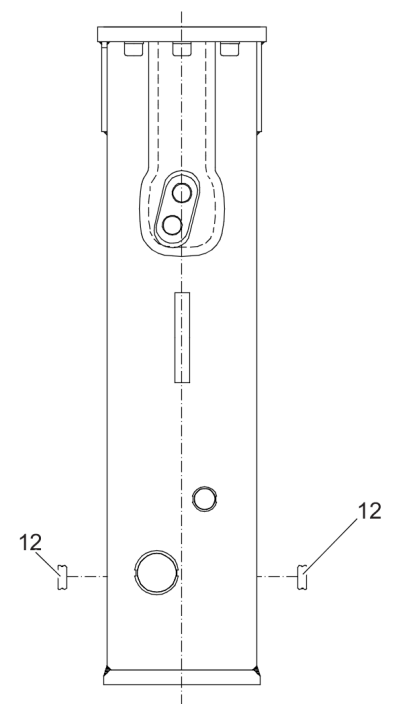


Item	Part No.	Name	Qty	L
1	3382070010	Label kit	1	
2	-	Product label	2	
3	-	Product label	2	
4	-	AEM sign	1	
5	3315262900	Safety label	1	
6	3315263000	Safety label	1	
7	-	Sound power label, 114 dB	1	
8	3360995411	Label - Lubricating symbol	1	

Mechanical Breaker body penta box (Valid to BES097220)

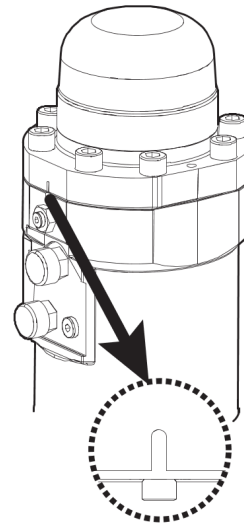
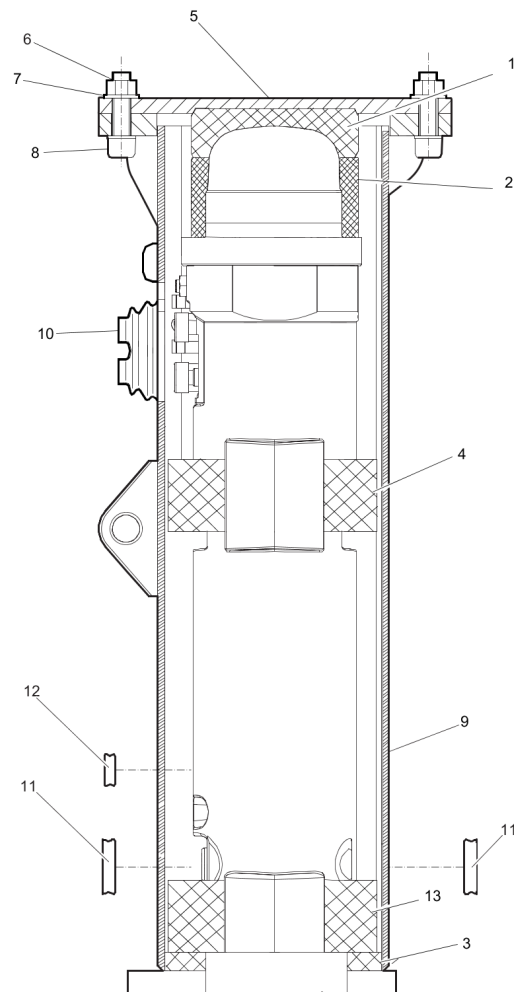


Install the back head onto cylinder housing where the marks meet each other.

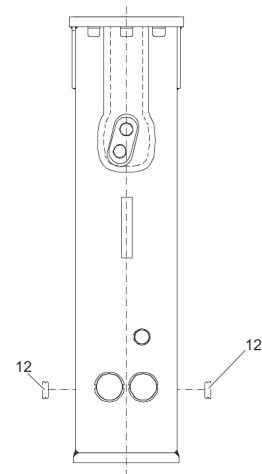


Item	Part No.	Name	Qty	L
1	3315416210	Shock absorber, upper	1	
2	3315416234	Spacer	1	
3	3315289900	Shock absorber	1	
4	3315425500	Lower guide	2	
5	3362264991	Base plate, optional	1	
6	3360103251	Nut	6	
7	3361850748	Pair of lock washers	12	
8	0211155703	HEX SOCK SCREW	6	
9	3315289300	Breaker box	1	
10	3362491006	Cover	1	
11	3362491007	Plug	2	
12	3362491004	Plug	3	

Mechanical Breaker body square box (Valid from BES097221)

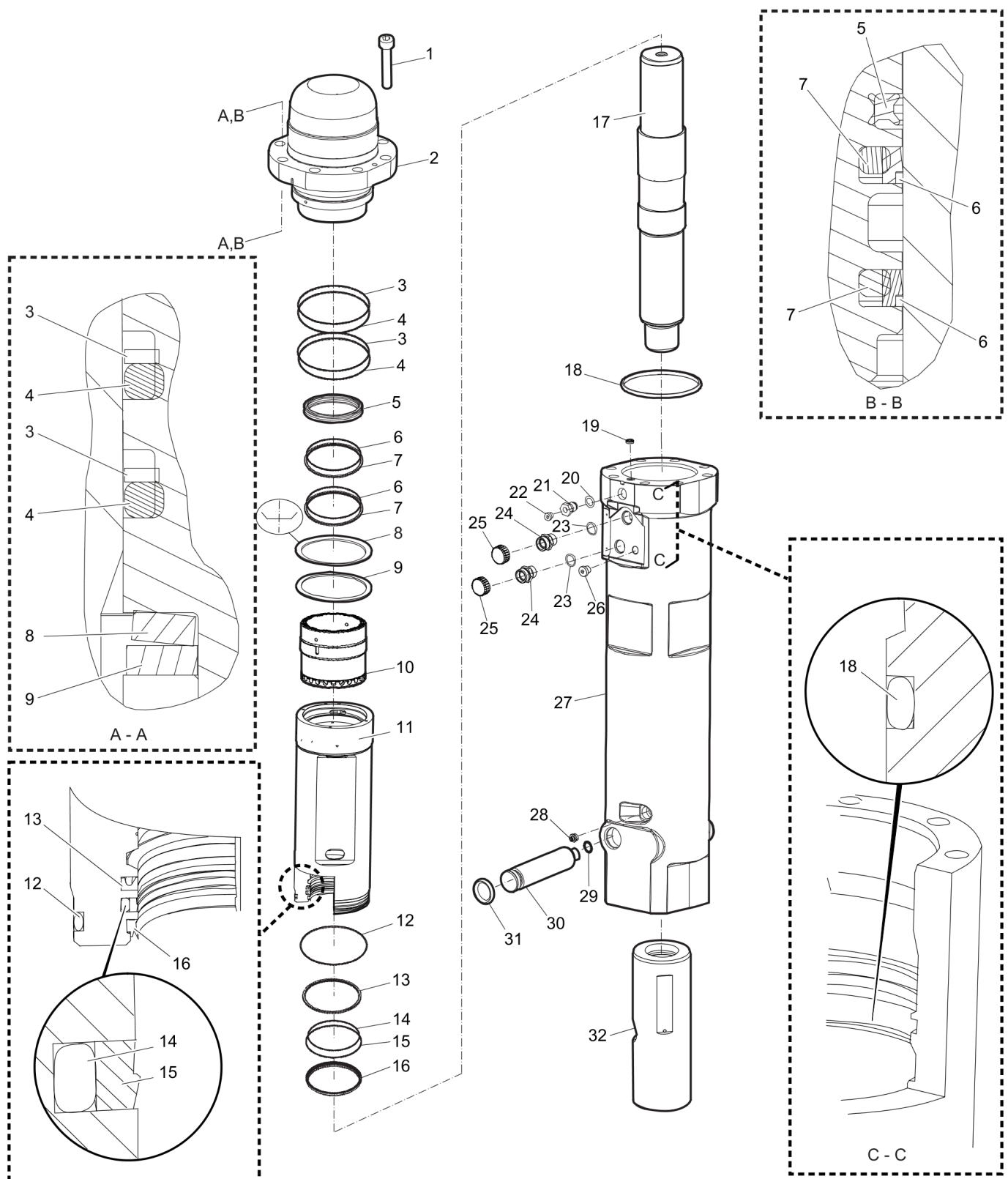


Install the back head onto cylinder housing where the marks meet each other.



Item	Part No.	Name	Qty	L
1	3315416210	Shock absorber, upper	1	
2	3315416234	Spacer	1	
3	3362440001	Shock absorber	1	
4	3315404217	Lower guide	1	
5	3362264991	Base plate, optional	1	
6	3360103251	Nut	6	
7	3361850748	Pair of lock washers	12	
8	0211155703	HEX SOCK SCREW	6	
9	3362140002	Breaker box	1	
10	3362491006	Cover	1	
11	3362491007	Plug	2	
12	3362491004	Plug	3	
13	3315404250	Lower guide	1	

Mechanical Impact mechanism (Valid to BES110277)



Refer to the DocMine web page for most up-to-date information. The printed information might be outdated.

Mon Feb 10 14:50:25 UTC 2020

Item	Part No.	Name	Qty	L
1	0211148303	SCREW	8	
2	3315413300	Back head	1	
3	3361192023	Back-up ring, $\varnothing 118.19 \times 4.65$ mm , $\varnothing 4.65 \times 0.18$ in.	2	
4	3361192022	O-ring, $\varnothing 116.84 \times 5.33$ mm , $\varnothing 4.60 \times 0.21$ in.	2	
5	3361192017	Seal	1	
6	3361192018	Seal	2	
7	3361192019	O-ring, $\varnothing 72.39 \times 5.33$ mm , $\varnothing 2.85 \times 0.21$ in.	2	
8	3361140004	Plate spring	1	
9	3361140005	Spacer	1	
10	3361140106	Control valve	1	
11	3361140002	Cylinder bush	1	
12	3361192025	O-ring, $\varnothing 113.67 \times 5.33$ mm, 90 shore (NBR)	1	
13	3361192027	Seal, $70 \times 85.1 \times 6.3$ mm , $2.76 \times 3.35 \times 0.25$ in.	1	
14	3361192029	O-ring, 75.57×5.33 mm , 2.98×0.21 in.	1	
15	3361192028	Seal	1	
16	3361192030	Wiper, $70 \times 80 \times 6.3 \times 9$ mm , $2.76 \times 3.15 \times 0.25 \times 0.35$ in.	1	
17	3315305130	Piston	1	
18	3315296620	One piece seal	1	
19	3115329002	SEAL RING	1	
20	0663925100	O-ring, 15.08x2.62	1	
21	3363087286	Filling valve complete	1	
22	3360478426	Threaded plug	1	
23	3361192067	O-ring	2	
24	3361031476	Nipple	2	
25	3361353486	Cap	2	
26	3363066963	Plug, M14 x 1.5 mm	1	
27	3315407000	Housing	1	
28	0544215300	GREASE NIPPLE	1	
29	3361192066	O-ring, 16.36x2.21	1	
30	3315410210	Retainer	1	
31	0663212006	O-ring, 26 x 6 mm	1	A
32	3361140009	Wear bush	1	

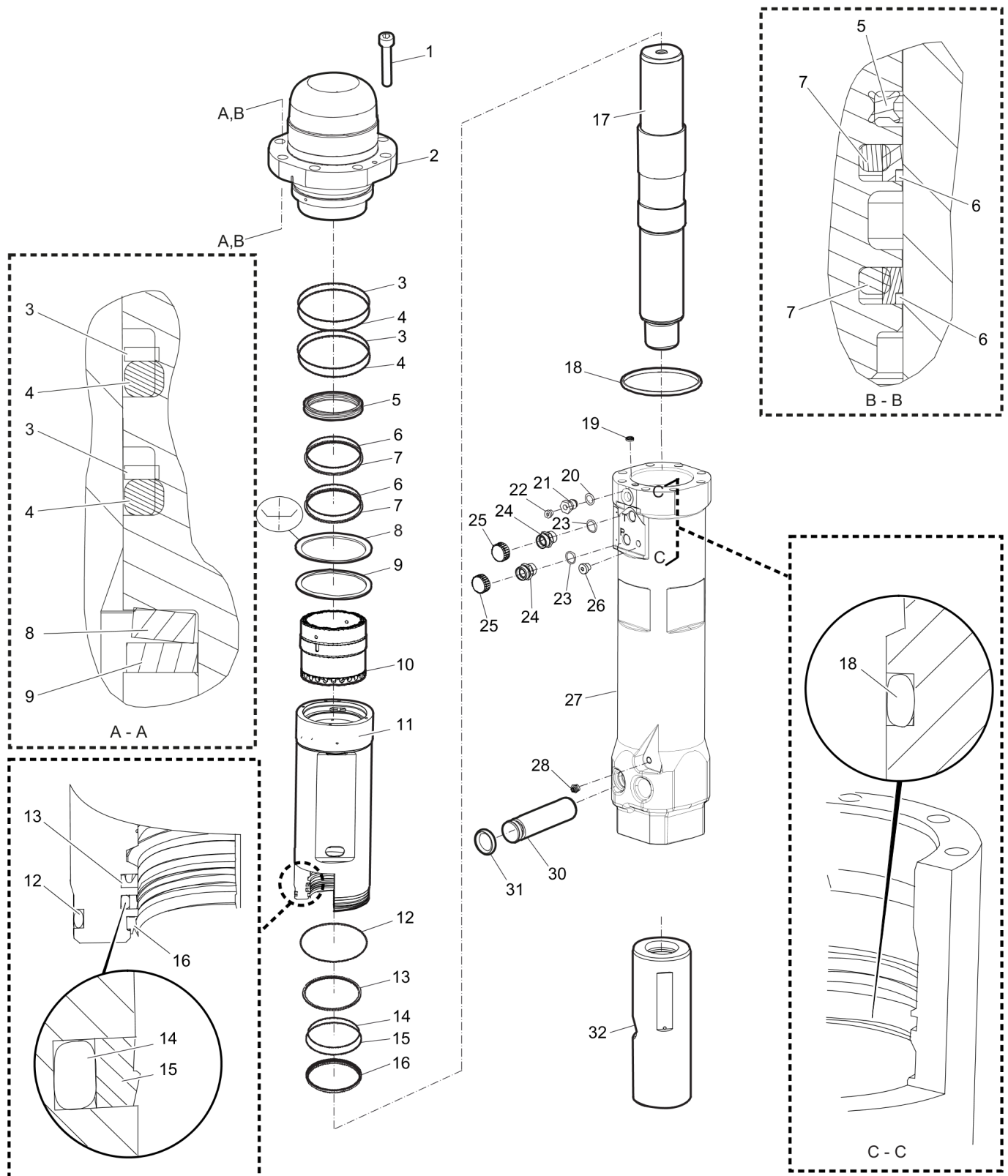
Comments for Page: Impact mechanism (Valid to BES110277)

A | Repair solution: Shore 90 28mm/ 6mm

Refer to the DocMine web page for most up-to-date information. The printed information might be outdated.

Mon Feb 10 14:50:25 UTC 2020

Mechanical Impact mechanism (Valid from BES110278)

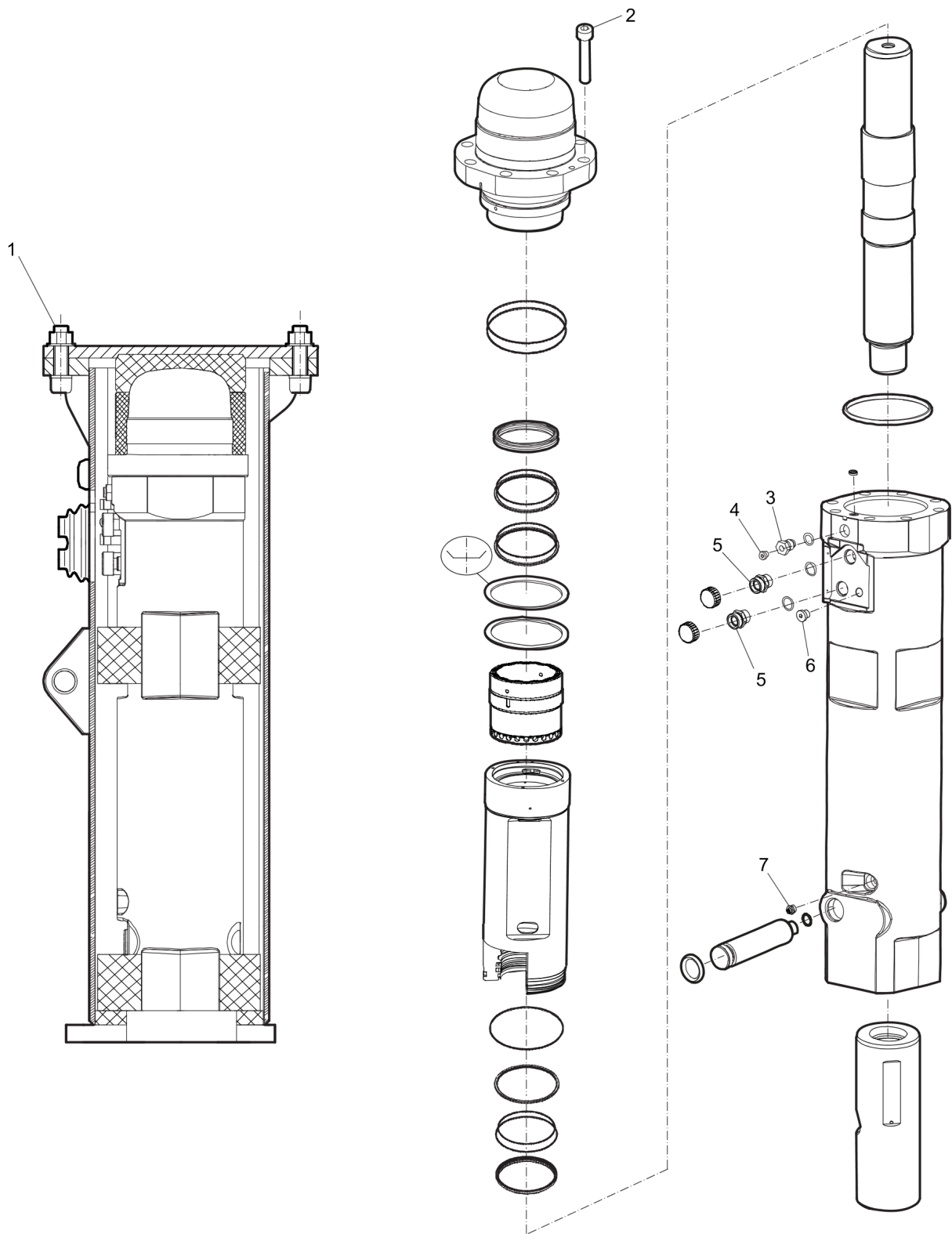


Refer to the DocMine web page for most up-to-date information. The printed information might be outdated.

Mon Feb 10 14:50:26 UTC 2020

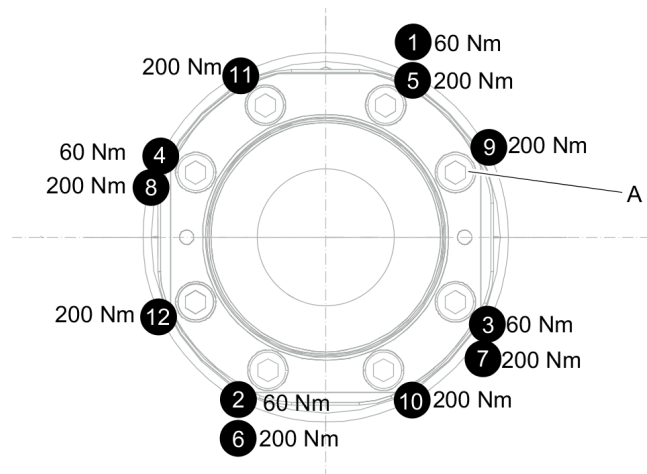
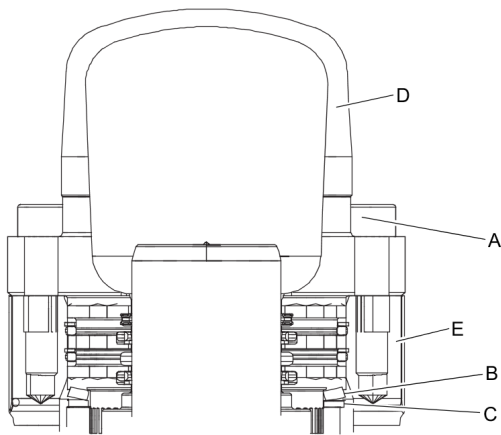
Item	Part No.	Name	Qty	L
1	0211148303	SCREW	8	
2	3315413300	Back head	1	
3	3361192023	Back-up ring, $\varnothing 118.19 \times 4.65$ mm , $\varnothing 4.65 \times 0.18$ in.	2	
4	3361192022	O-ring, $\varnothing 116.84 \times 5.33$ mm , $\varnothing 4.60 \times 0.21$ in.	2	
5	3361192017	Seal	1	
6	3361192018	Seal	2	
7	3361192019	O-ring, $\varnothing 72.39 \times 5.33$ mm , $\varnothing 2.85 \times 0.21$ in.	2	
8	3361140004	Plate spring	1	
9	3361140005	Spacer	1	
10	3361140106	Control valve	1	
11	3361140002	Cylinder bush	1	
12	3361192025	O-ring, $\varnothing 113.67 \times 5.33$ mm, 90 shore (NBR)	1	
13	3361192027	Seal, $70 \times 85.1 \times 6.3$ mm , $2.76 \times 3.35 \times 0.25$ in.	1	
14	3361192029	O-ring, 75.57×5.33 mm , 2.98×0.21 in.	1	
15	3361192028	Seal	1	
16	3361192030	Wiper, $70 \times 80 \times 6.3 \times 9$ mm , $2.76 \times 3.15 \times 0.25 \times 0.35$ in.	1	
17	3315305130	Piston	1	
18	3315296620	One piece seal	1	
19	3115329002	SEAL RING	1	
20	0663925100	O-ring, 15.08x2.62	1	
21	3363087286	Filling valve complete	1	
22	3360478426	Threaded plug	1	
23	3361192067	O-ring	2	
24	3361031476	Nipple	2	
25	3361353486	Cap	2	
26	3363066963	Plug, M14 x 1.5 mm	1	
27	3315407005	Housing	1	
28	0544215300	GREASE NIPPLE	1	
30	3315410215	Retainer	1	
31	0663212006	O-ring, 26×6 mm	1	A
32	3361140009	Wear bush	1	

Mechanical Tightening torques



Item	Part No.	Name	Qty	L
1	-	Screw, 390 Nm (288 ft lbf)	-	
2	-	Screw, 60 Nm/200 Nm (447148 ft lbf), see "Assembly instruction"	-	
3	-	Filling valve, 130 Nm (96 ft lbf)	-	
4	-	Threaded plug, 20 Nm (15 ft lbf)	-	
5	-	Nipple, 90 Nm (66 ft lbf)	-	
6	-	Plug, 30 Nm (22 ft lbf)	-	
7	-	Grease nipple, 20 Nm (15 ft lbf)	-	

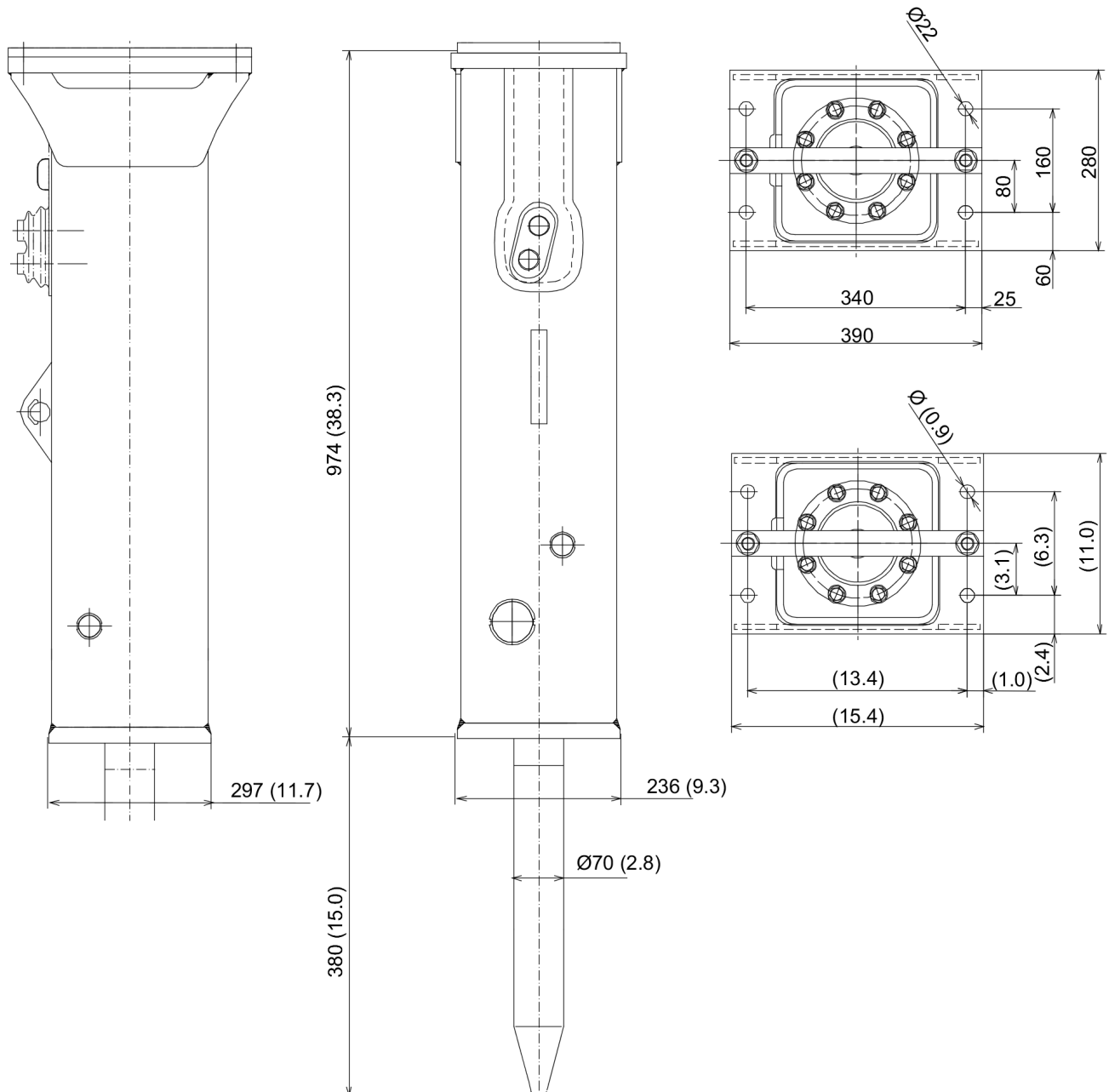
Mechanical Assembly instruction



1. Make sure the spring plate (B) and spacer (C) are centered before mounting the back head (D).
 2. Press the back head (D) down on the spring plate (B) and spacer (C).
 3. Grease the screws (A) with Molykote® 1000 (Molykote is a registered trademark of Dow Corning Corporation), and manually fit them on the back head (D)
 4. Torque the first two screws (A) in the order shown in picture above to 60 Nm (44 ft lbf). This will compress the spring plate (B), and fit the back head (D) into the cylinder housing (E). Torque the rest of screws (A) in the order shown in picture above to 200 Nm (148 ft lbf).
- NOTICE Always start by fitting screws by hands.
- NOTICE Tighten in two stages.
- Stage 1: 60 Nm (44 ft lbf)
- Stage 2: 200 Nm (148 ft lbf)

This page intentionally left blank

Mechanical Main dimensions, mm (in.)

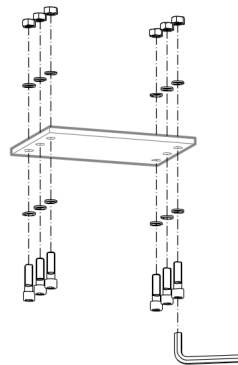
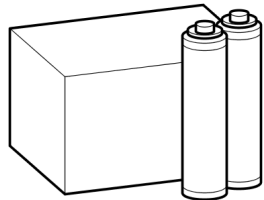
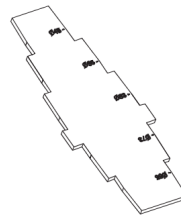
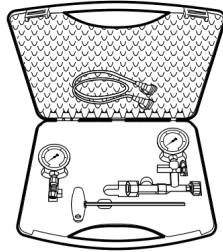
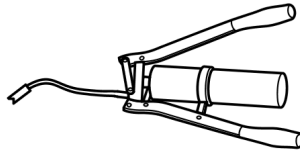
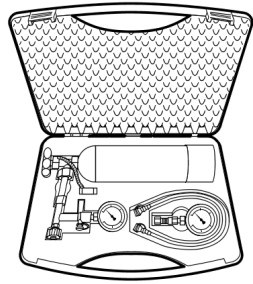


Refer to the DocMine web page for most up-to-date information. The printed information might be outdated.

Mon Feb 10 14:50:27 UTC 2020

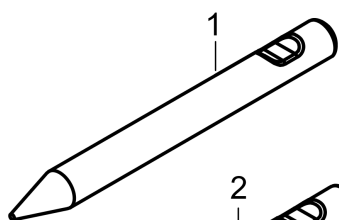
This page intentionally left blank

Options/accessories Optional equipment

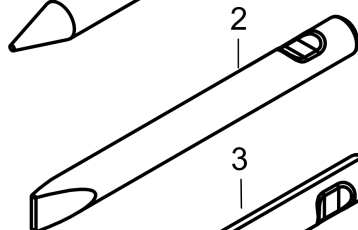


Item	Part No.	Name	Qty	L
1	3363094913	Chisel paste cartridge for grease gun, 12 x 400 g (0.88 lbs)	1	
2	0909107100	LUBRICAT.GUN	1	
3	3315303700	Test gauge wear bush	1	
4	3363491004	Charging box with nitrogen cylinder, 2 l, 0.43 gal (0.53 US gal)	1	
5	3363117786	Charging box without nitrogen cylinder	1	
6	3363099701	Base plate with through borings	1	
7	3363106508	Bolt kit	1	

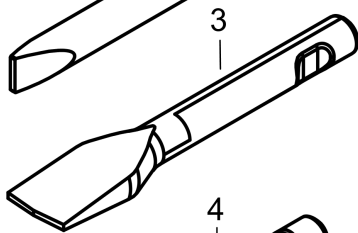
Options/accessories Working tools



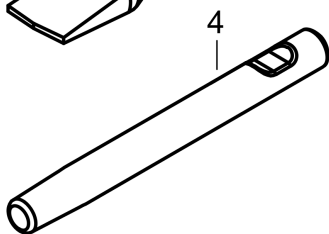
L=380 mm, Lt=665 mm, Wt=18 kg
L=14.96 inch, Lt=26.18 inch, Wt=39.7 lb



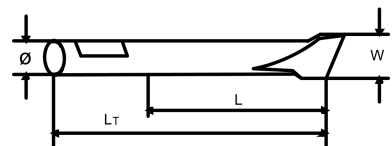
W=70 mm, L=380 mm, Lt=665 mm, Wt=18.7 kg
W=1.65 inch, L=10.43 inch, Lt=16.73 inch, Wt=9.3 lb



W=200 mm, L=435 mm, Lt=720 mm, Wt=22.7 kg
W=7.87 inch, L=17.13 inch, Lt=28.35 inch, Wt=50 lb

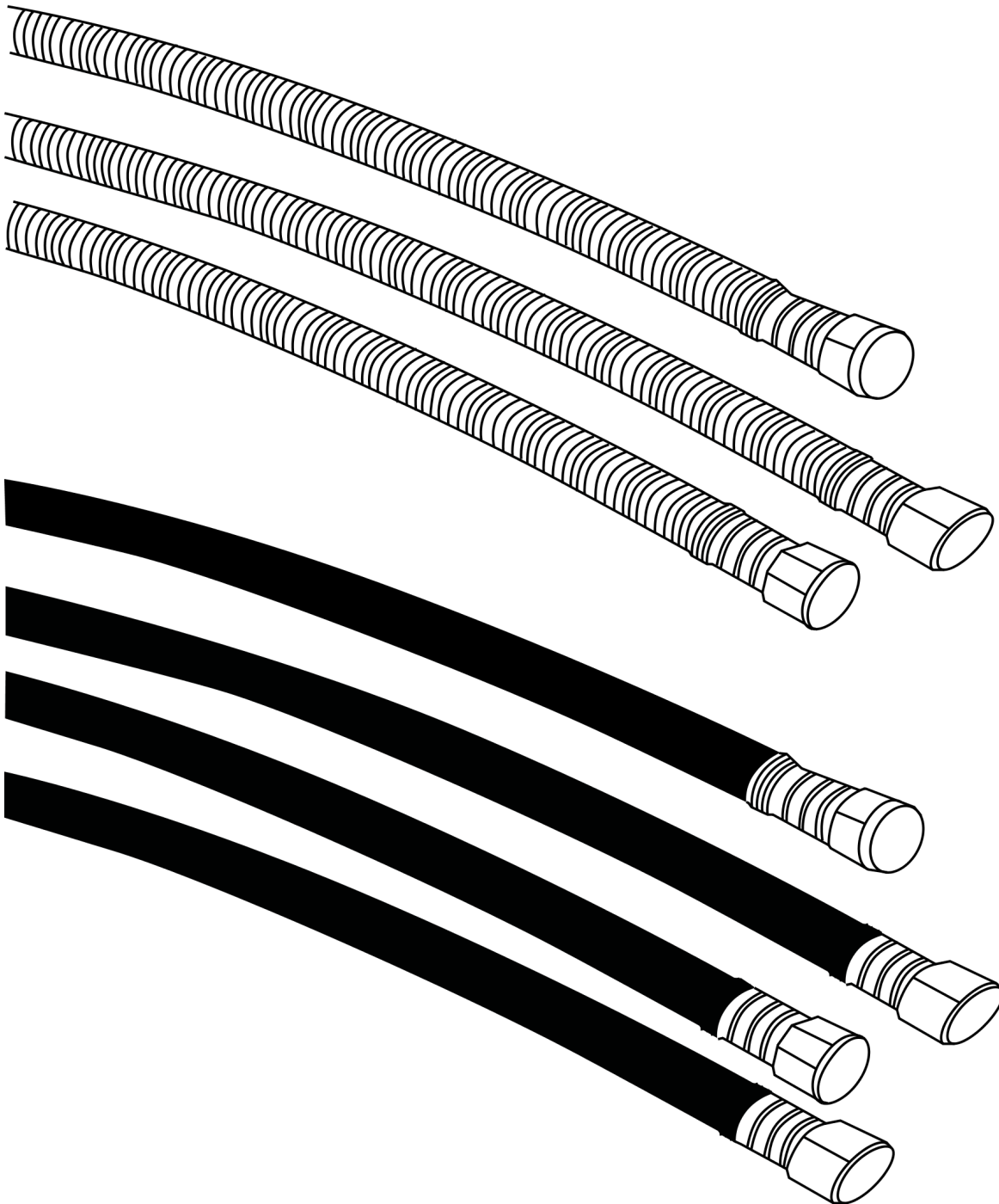


L=380 mm, Lt=665 mm, Wt=17.6 kg
L=14.96 inch, Lt=26.18 inch, Wt=38.8 lb



Item	Part No.	Name	Qty	L
1	3083342429	Moil point (conical)		
2	3083342430	Chisel (cross)		
3	3363140005	Asphalt cutter (cross)		
4	3083342431	Blunt tool		

Options/accessories Hydraulic hose



Item	Part No.	Name	Qty	L
Not Shown	-	Standard connection hoses	1	
-	3363115423	Hose, both ends 18 L(M26x1.5) length 1750 mm	1	
-	3363491002	Hose, both ends 18 L(M26x1.5) length 1500 mm	1	
-	3363101424	Hydraulic hose, I.D. 16 mm (0.63") 18 L (M26 x 1.5), length 2000 mm (78.74 in.)	1	
-	3363115425	Hose, both ends 18 L(M26x1.5) length 2400 mm	1	
Not Shown	-	Heavy duty connction hoses with spring protection	1	
-	3360995717	Hose, both ends 18 L(M26 x 1.5) length 1500 mm	1	
-	3363115426	Hose, both ends 18 L(M26x1.5) length 1750 mm	1	
-	3362235159	Hose, both ends 18 L(M26 x 1.5) length 2000 mm	1	
-	3363083313	Hose, both ends 18 L(M26 x 1.5) length 2400 mm	1	

Any unauthorized use or copying of the contents or any part thereof is prohibited.
This applies in particular to trademarks, model denominations, part numbers, and drawings.