

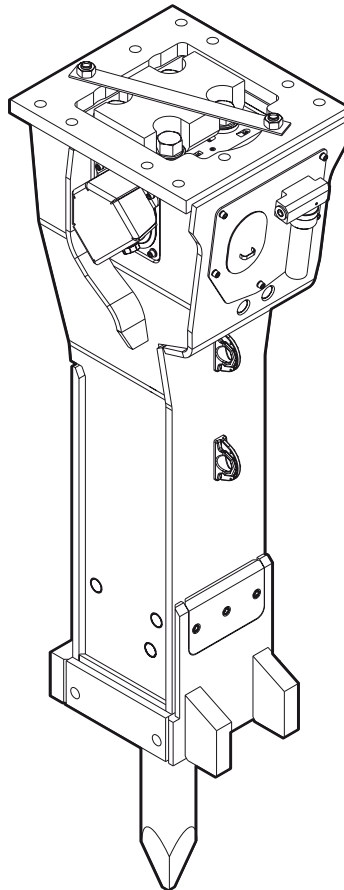
HB 2500, 2500 DP

Spare parts list

Hydraulic breakers

HB 2500 s/n DEQ130314 - DEQ140408

HB 2500 DP s/n DEQ130314 - DEQ140408



General information

This spare parts list applies to the following:

Part number	Description
3363092691	Hydraulic breaker HB 2500
3363093871	Hydraulic breaker HB 2500 DP

Use only authorized parts. Any damage or malfunction caused by the use of unauthorized parts is not covered by Warranty or Product Liability. Any unauthorized use or copying of the contents or any part thereof is prohibited. This applies in particular to trademarks, model denominations, part numbers, and drawings.

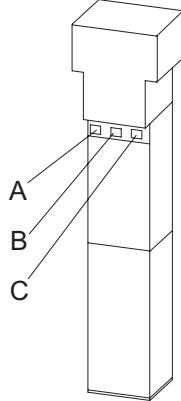
Instructions for use

This spare parts list contains no safety regulations and is merely intended to assist in the ordering of spare parts. For information about operating, servicing, or repairing, the relevant Safety and operating instructions must be consulted at all costs. Please observe the safety instructions listed in the relevant Safety and operating instructions!

Instructions for ordering

It is essential to indicate the serial number of the hydraulic attachment when ordering spare parts!
Please note the full identification number of your hydraulic attachment. The code can be found on the cylinder.
Determine the quantity of individual parts which are required and need to be ordered. The order must indicate the following details:

- full identification code of the hydraulic attachment
- required quantity
- part number
- description



- A. Cylinder number
- B. Type
- C. Serial number

Contents

Service, repair and wear part kits

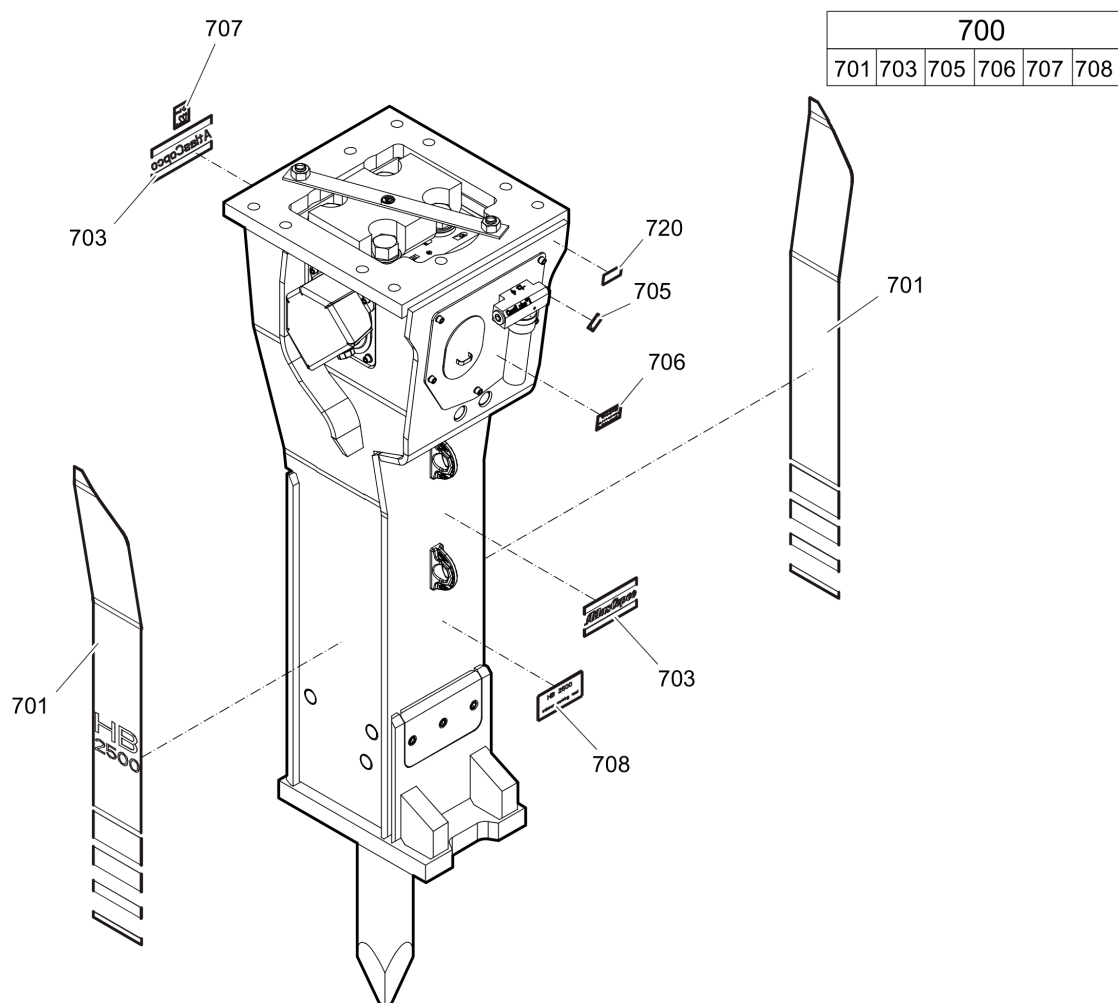
Label kit HB 2500	1
Label kit HB 2500 DustProtector	3
Kit list	5

Mechanical

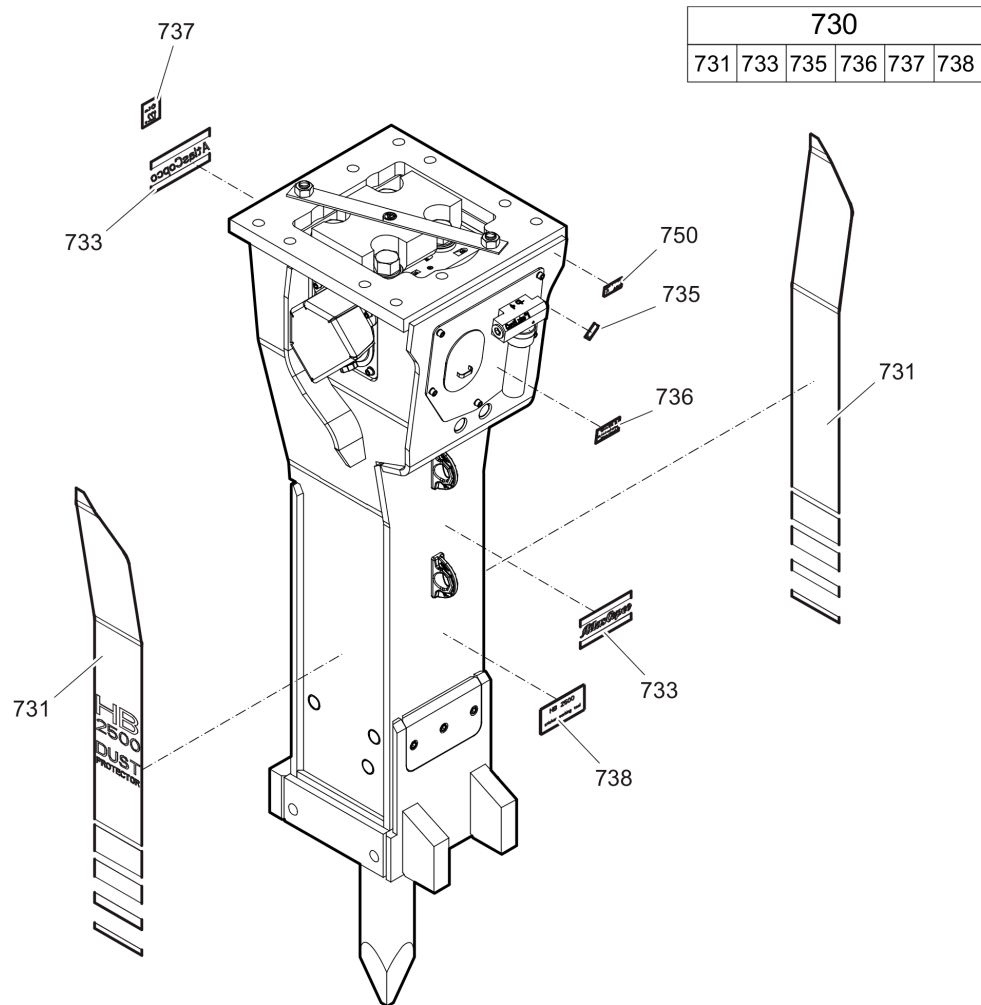
Hydraulic breaker HB 2500	10
Hydraulic breaker HB 2500 DustProtector	13
Percussion unit part 1: cylinder cover	16
Percussion unit part 2: cylinder	20
Percussion unit part 3: lower breaker part	23
Connecting kit for automatic lubrication system	25
StartSelect - AutoStart or AutoStop	27
Optional parts	29
Tightening torques	31
Dimensions HB 2500	34
Dimensions HB 2500 DustProtector	36

Options / accessories

Hydraulic hoses	38
Optional equipment	41
Working tools ClassicLine HB 2500	43
Working tools SilverLine HB 2500	45
Working tools ClassicLine HB 2500 DP	47
Working tools SilverLine HB 2500 DP	50

Service, repair and wear part kits Label kit HB 2500

Item	Part No.	Name	Qty	L
700(701-708)	3363094399	Label kit HB 2500	1	
701		Product label "HB 2500"	2	
703		Product label "Atlas Copco"	2	
705		Label - Lubricating symbol	1	
706		Label - Gas pressure	2	
707		Sound power	1	
708		Label working tools	1	
720		Name plate - Consult the Atlas Copco Customer Center/Dealer in your area.	1	

Service, repair and wear part kits Label kit HB 2500 DustProtector

Item	Part No.	Name	Qty	L
730(731-738)	3363098001	Label kit HB 2500 DP	1	
731		Product label "HB 2500 DP"	2	
733		Product label "Atlas Copco"	2	
735		Label - Lubricating symbol	1	
736		Label - Gas pressure	2	
737		Sound power	1	
738		Label working tools	1	
750		Name plate - Consult the Atlas Copco Customer Center/Dealer in your area.	1	

Service, repair and wear part kits Kit list

NO EXPLODED VIEW
AVAILABLE
FOR THIS BOM

Item	Part No.	Name	Qty	L
KIT	3363094605	Seal kit	1	
103	3360314375	O-ring	1	
108	3360314370	O-ring	1	
112	3363087085	Back-up ring	1	
113	3363110401	O-ring	1	
115	3360478171	O-ring	1	
120	3360478079	O-ring	1	
138	3360314373	O-ring	2	
164	3361031912	O-ring	1	
165	3361850529	Back-up ring	1	
166	3361031990	O-ring	1	
145(146-147)	3361850422	Seal kit	2	
146		O-ring	2	
147		Back-up ring	2	
182	3360478426	Threaded plug	1	
183	3360175125	O-ring	1	
202	3363098135	Seal	1	
204	3363094624	Seal	1	
290(291-292)	3363094642	Seal kit	2	
291		Back-up ring	1	
292		Seal	1	
305	3362267583	Seal	4	
306	3362267585	Seal	5	
307	3362267281	Seal	8	
310	3363094625	Wiper	1	
390(391-392)	3363094643	Seal kit	1	
391		Seal	1	
392		Back-up ring	1	
602	3363083245	O-ring	1	
KIT	3363091732	Seal kit for swivel joint for automatic lubrication system	1	
KIT	3363091467	Plastic parts kit	1	
2	3363093879	Elastic pad	1	
3	3361356925	Shock absorber	2	
4	3363088453	Guide plate	2	
5	3362264051	Guide plate	2	
6	3363093877	Plate	1	
KIT	3363098085	Tensioning bolt kit	1	A

Refer to Parts Online for the most up to date information. The printed information might be outdated.

Tue May 31 01:53:01 MDT 2016

Item	Part No.	Name	Qty	L
191		Tensioning bolt	2	
192	3363093651	Washer	2	
487	3363085499	Threaded insert	2	
KIT	3363098086	DustProtector kit	1	
11	3363097735	Floating ring (tribolid)	1	
12	3363033723	Counter ring	1	
13	3363033719	Guide ring	1	
14	3361854363	Locking bush	2	
15	3363070643	Bolt	2	
KIT	3363098087	Noise protection kit	1	
34	3363086015	Plug	12	
35	3362267893	Plug	1	
36	3363031181	Cover	2	
40	3363092697	Cover	1	
KIT	3363103404	Lower breaker part kit (steel)	1	
401	3360981927	Retainer bar	2	
402	3361854347	Bolt	2	
403	3362262925	Plug	4	
482	3363097721	Impact ring	1	
483	3363097723	Wear bush	1	
484	3363097727	Wear bush (steel)	1	
485	3361854363	Locking bush	4	
486	3361854347	Bolt	2	
-	3315038100	Chisel paste cartridge, 400 g 0.88 lb	1	
-	3363099205	Test gauge	1	
KIT	3363094395	Lower breaker part kit (bronze)	1	
401	3360981927	Retainer bar	2	
402	3361854347	Bolt	2	
403	3362262925	Plug	4	
482	3363097721	Impact ring	1	
483	3363097723	Wear bush	1	
484	3363097725	Wear bush (bronze)	1	
485	3361854363	Locking bush	4	
486	3361854347	Bolt	2	
-	3315038100	Chisel paste cartridge, 400 g 0.88 lb	1	
-	3363099205	Test gauge	1	
KIT	3363103405	Lower breaker part kit (steel) for DustProtector version	1	

Refer to Parts Online for the most up to date information. The printed information might be outdated.

Tue May 31 01:53:01 MDT 2016

Item	Part No.	Name	Qty	L
18	3363097733	Base for wiper	1	
19	3363097741	Wiper	1	
401	3360981927	Retainer bar	2	
402	3361854347	Bolt	2	
403	3362262925	Plug	4	
482	3363097721	Impact ring	1	
483	3363097723	Wear bush	1	
484	3363097727	Wear bush (steel)	1	
485	3361854363	Locking bush	4	
486	3361854347	Bolt	2	
-	3315038100	Chisel paste cartridge, 400 g 0.88 lb	1	
-	3363099205	Test gauge	1	
KIT	3363094396	Lower breaker part kit (bronze) for DustProtector version	1	
18	3363097733	Base for wiper	1	
19	3363097741	Wiper	1	
401	3360981927	Retainer bar	2	
402	3361854347	Bolt	2	
403	3362262925	Plug	4	
482	3363097721	Impact ring	1	
483	3363097723	Wear bush	1	
484	3363097725	Wear bush (bronze)	1	
485	3361854363	Locking bush	4	
486	3361854347	Bolt	2	
-	3315038100	Chisel paste cartridge, 400 g 0.88 lb	1	
-	3363099205	Test gauge	1	
KIT	3363098088	Fastening screw kit	1	
161	3363070490	Fastening screw	6	
163	3361333703	Pair of lock washers	6	
172	3361031989	Threaded insert	6	
KIT	3363089849	Accumulator repair kit	1	
-	3362261647	Diaphragm	1	
-	3360332259	Filling screw	1	
-	3360314460	O-ring	1	
-	3361335025	Protective cap	1	
-	3361031912	O-ring	1	
-	3361850529	Back-up ring	1	

Refer to Parts Online for the most up to date information. The printed information might be outdated.

Tue May 31 01:53:01 MDT 2016

Comments for Page: Kit list

A | You need Anti-Seize agent when fitting tensioning bolts. You have to order it separately.

Anti-seize 120 g, part number 3363094300

Or buy it locally according to the following specification:

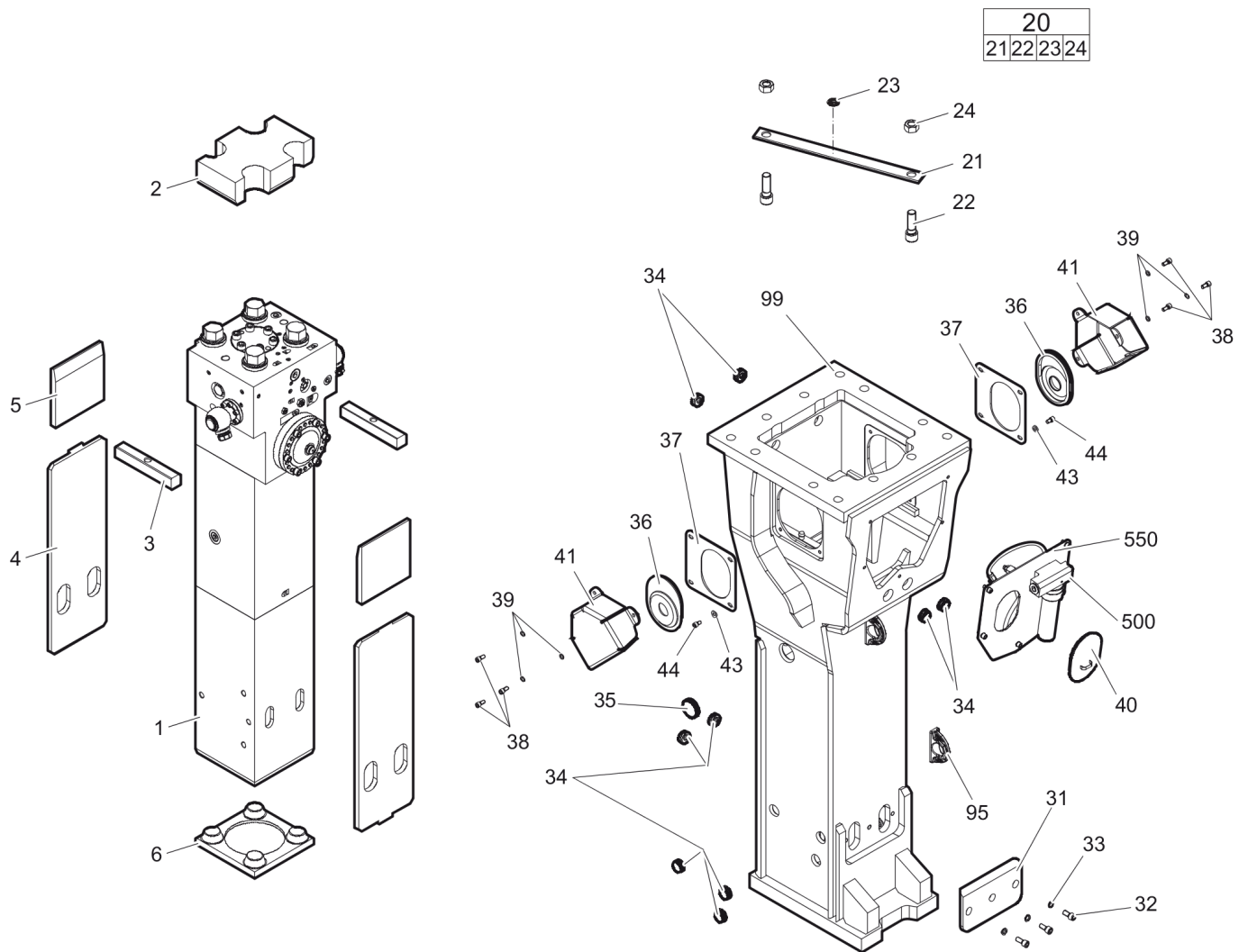
coefficient of friction 0.14 μ

coefficient of friction thread 0.13 μ

coefficient of friction on upside down 0.15 μ

This page intentionally left blank

Mechanical Hydraulic breaker HB 2500



Refer to Parts Online for the most up to date information. The printed information might be outdated.
Tue May 31 01:53:03 MDT 2016

Item	Part No.	Name	Qty	L
1		Percussion unit	1	A
2	3363093879	Elastic pad	1	
3	3361356925	Shock absorber	2	
4	3363088453	Guide plate	2	
5	3362264051	Guide plate	2	
6	3363093877	Plate	1	
20(21-24)	3363083343	Transport safety device complete	1	
21		Transport safety device	1	
22	3360026883	Allen screw	2	
23	3363091872	Label transport safety device	1	
24	3360103254	Nut	2	
31	3363098827	Plate	1	
32	3362328113	Allen screw	3	
33	3361333703	Pair of lock washers	3	
34	3363086015	Plug	12	
35	3362267893	Plug	1	
36	3363031181	Cover	2	
37	3363098830	Plate	2	
38	3360103750	Allen screw	6	
39	3361850596	Pair of lock washers	6	
40	3363092697	Cover	1	
41	3363111326	Swivel joint cover	2	
43	3363111296	Pair of lock washers	2	
44	3362328480	Allen screw	2	
95	3363111994	Lifting eye	2	B
99	3363098804	Breaker box	1	C
500	3363067123	Automatic lubrication system	1	D
550		Connecting kit for automatic lubrication system	1	A

Comments for Page: Hydraulic breaker HB 2500

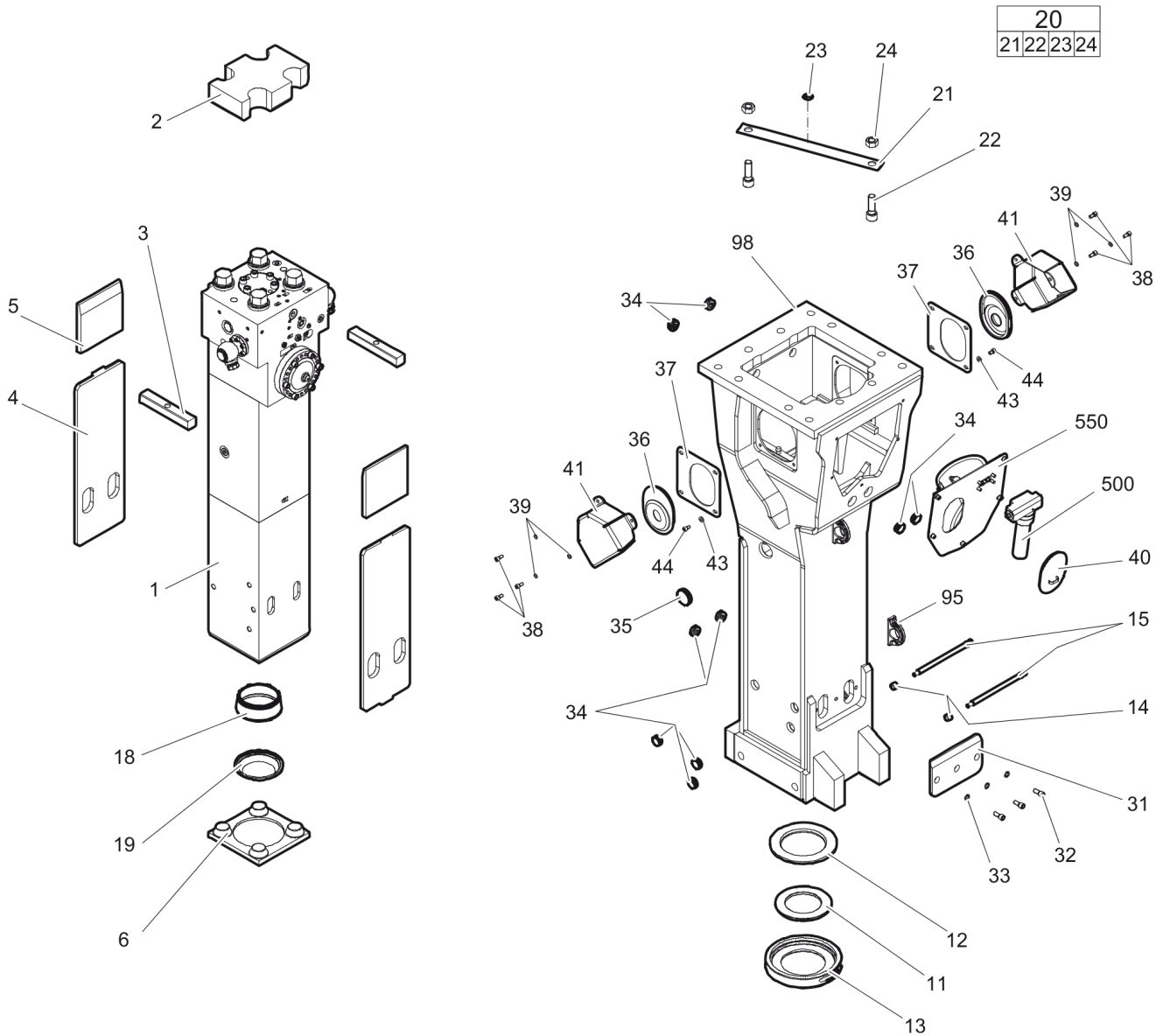
(L)OCAL REMARKS

A | see separate chapter

B | professional welding process necessary

C | with item 95

D | see separate Safety and operating instructions

Mechanical Hydraulic breaker HB 2500 DustProtector

Refer to Parts Online for the most up to date information. The printed information might be outdated.

Tue May 31 01:53:05 MDT 2016

Item	Part No.	Name	Qty	L
1		Percussion unit	1	A
2	3363093879	Elastic pad	1	
3	3361356925	Shock absorber	2	
4	3363088453	Guide plate	2	
5	3362264051	Guide plate	2	
6	3363093877	Plate	1	
11	3363097735	Floating ring (tribolid)	1	B
12	3363033723	Counter ring	1	
13	3363033719	Guide ring	1	
14	3361854363	Locking bush	2	
15	3363070643	Bolt	2	
18	3363097733	Base for wiper	1	
19	3363097741	Wiper	1	
20(21-24)	3363083343	Transport safety device complete	1	
21		Transport safety device	1	
22	3360026883	Allen screw	2	
23	3363091872	Label transport safety device	1	
24	3360103254	Nut	2	
31	3363098827	Plate	1	
32	3362328113	Allen screw	3	
33	3361333703	Pair of lock washers	3	
34	3363086015	Plug	12	
35	3362267893	Plug	1	
36	3363031181	Cover	2	
37	3363098830	Plate	2	
38	3360103750	Allen screw	6	
39	3361850596	Pair of lock washers	6	
40	3363092697	Cover	1	
41	3363111326	Swivel joint cover	2	
43	3363111296	Pair of lock washers	2	
44	3362328480	Allen screw	2	
95	3363111994	Lifting eye	2	C
98	3363098805	Breaker box	1	D
500	3363067123	Automatic lubrication system	1	E
550		Connecting kit for automatic lubrication system	1	A

Comments for Page: Hydraulic breaker HB 2500 DustProtector

(LOCAL REMARKS

A | see separate chapter

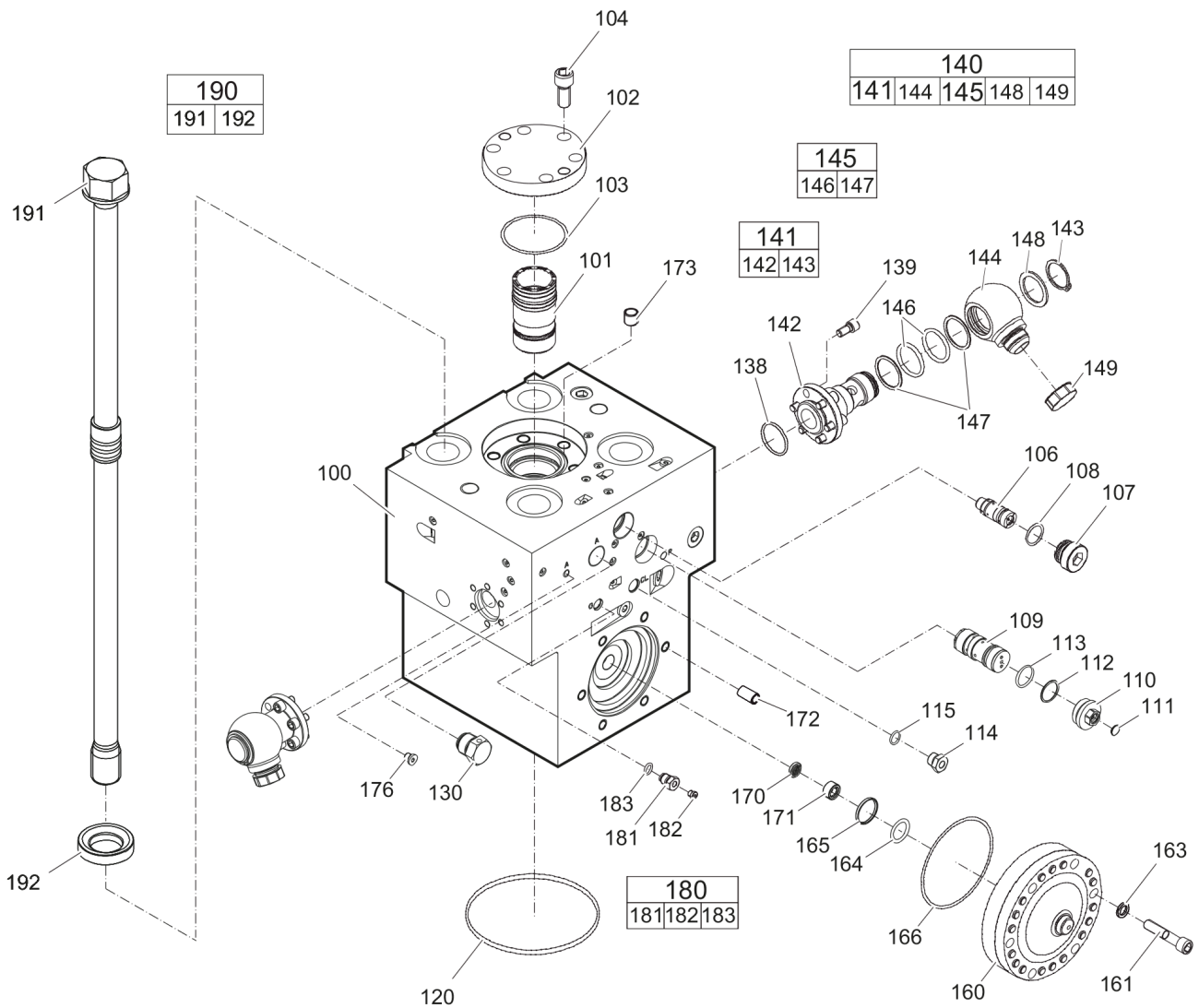
B | steel see chapter Optional parts

C | professional welding process necessary

D | with item 95

E | see separate Safety and operating instructions

This page intentionally left blank

Mechanical Percussion unit part 1: cylinder cover

Refer to Parts Online for the most up to date information. The printed information might be outdated.

Tue May 31 01:53:08 MDT 2016

Item	Part No.	Name	Qty	L
100	3363094601	Cylinder cover	1	A
101	3363109219	Main control valve	1	
102	3363097717	Cover	1	
103	3360314375	O-ring	1	
104	3360103776	Allen screw	6	
106	3363035453	Valve	1	B
107	3363035425	Threaded plug	1	
108	3360314370	O-ring	1	
109	3363085270	Safety valve	1	C
110	3363087086	Threaded plug	1	
111	3363087087	Threaded plug	1	
112	3363087085	Back-up ring	1	
113	3363110401	O-ring	1	
114	3361854657	Connecting screw	1	
115	3360478171	O-ring	1	
120	3360478079	O-ring	1	
130	3361854511	Non-return valve	1	
138	3360314373	O-ring	2	
139	3360103750	Allen screw	12	
140(141-149)	3363116891	Swivel joint complete	2	
141(142-143)	3363116890	Adapter complete	1	
142		Adapter	1	
143	3363103133	Snapring	1	
144	3361356643	Adapter	1	
145(146-147)	3361850422	Seal kit	1	
146		O-ring	2	
147		Back-up ring	2	
148	3361356645	Disk	1	
149	3361353489	Cap	1	
160	3363069585	HP-accumulator	1	
161	3363070490	Fastening screw	6	
163	3361333703	Pair of lock washers	6	
164	3361031912	O-ring	1	
165	3361850529	Back-up ring	1	
166	3361031990	O-ring	1	
170	3361844113	Strainer disk	1	
171	3361844115	Threaded plug	1	

Refer to Parts Online for the most up to date information. The printed information might be outdated.

Tue May 31 01:53:08 MDT 2016

Item	Part No.	Name	Qty	L
172	3361031989	Threaded insert	6	
173	3361031529	Threaded insert	6	
176	3360478439	Threaded plug	1	
180(181-183)	3363087286	Filling valve	1	
181		Filling valve	1	
182	3360478426	Threaded plug	1	
183	3360175125	O-ring	1	
190(191-192)	3363094604	Tensioning bolt complete	4	
191		Tensioning bolt	1	
192	3363093651	Washer	1	

Comments for Page: Percussion unit part 1: cylinder cover

(L)OCAL REMARKS

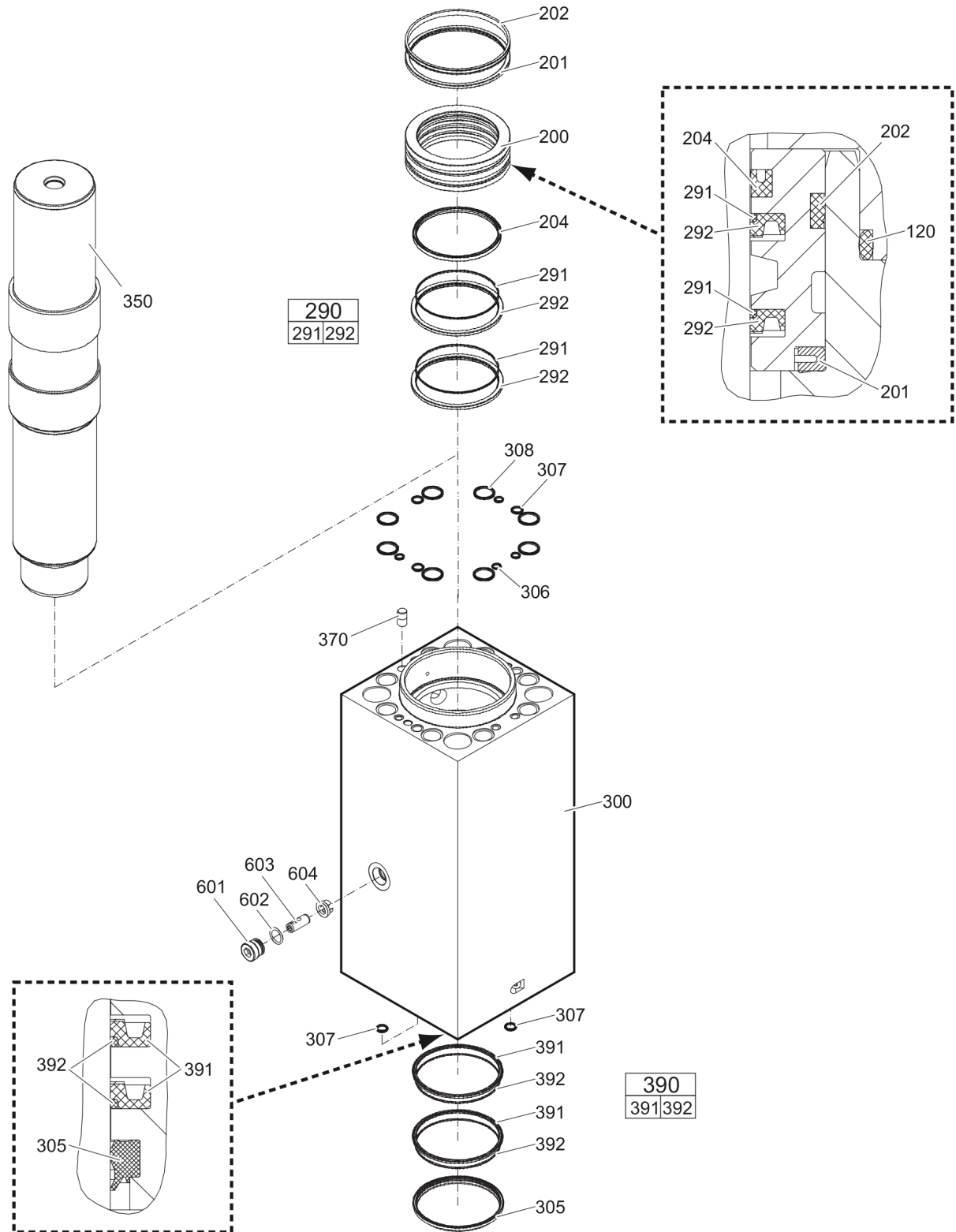
A | with items 170 - 176

B | AutoControl

C | PowerAdapt

Only in exchange for the part to be replaced. Consult the Atlas Copco Customer Center/Dealer in your area.

This page intentionally left blank

Mechanical Percussion unit part 2: cylinder

Refer to Parts Online for the most up to date information. The printed information might be outdated.

Tue May 31 01:53:10 MDT 2016

Item	Part No.	Name	Qty	L
200	3363097711	Seal bush	1	
201	3363097791	Ring	1	
202	3363098135	Seal	1	
204	3363094624	Seal	1	
290(291-292)	3363094641	Seal kit	2	
291		Back-up ring	1	
292		Seal	1	
300	3363094602	Cylinder	1	A
305	3363094625	Wiper	1	
306	3362267583	Seal	4	
307	3362267585	Seal	5	
308	3362267281	Seal	8	
350	3363094600	Percussion piston	1	
370	3362268185	Lock pin	1	
390(391-392)	3363094640	Seal kit	2	
391		Seal	1	
392		Back-up ring	1	
601	3363082593	Plug	1	
602	3363083245	O-ring	1	
603	3363097755	Valve	1	B
604	3363097731	Sleeve	1	

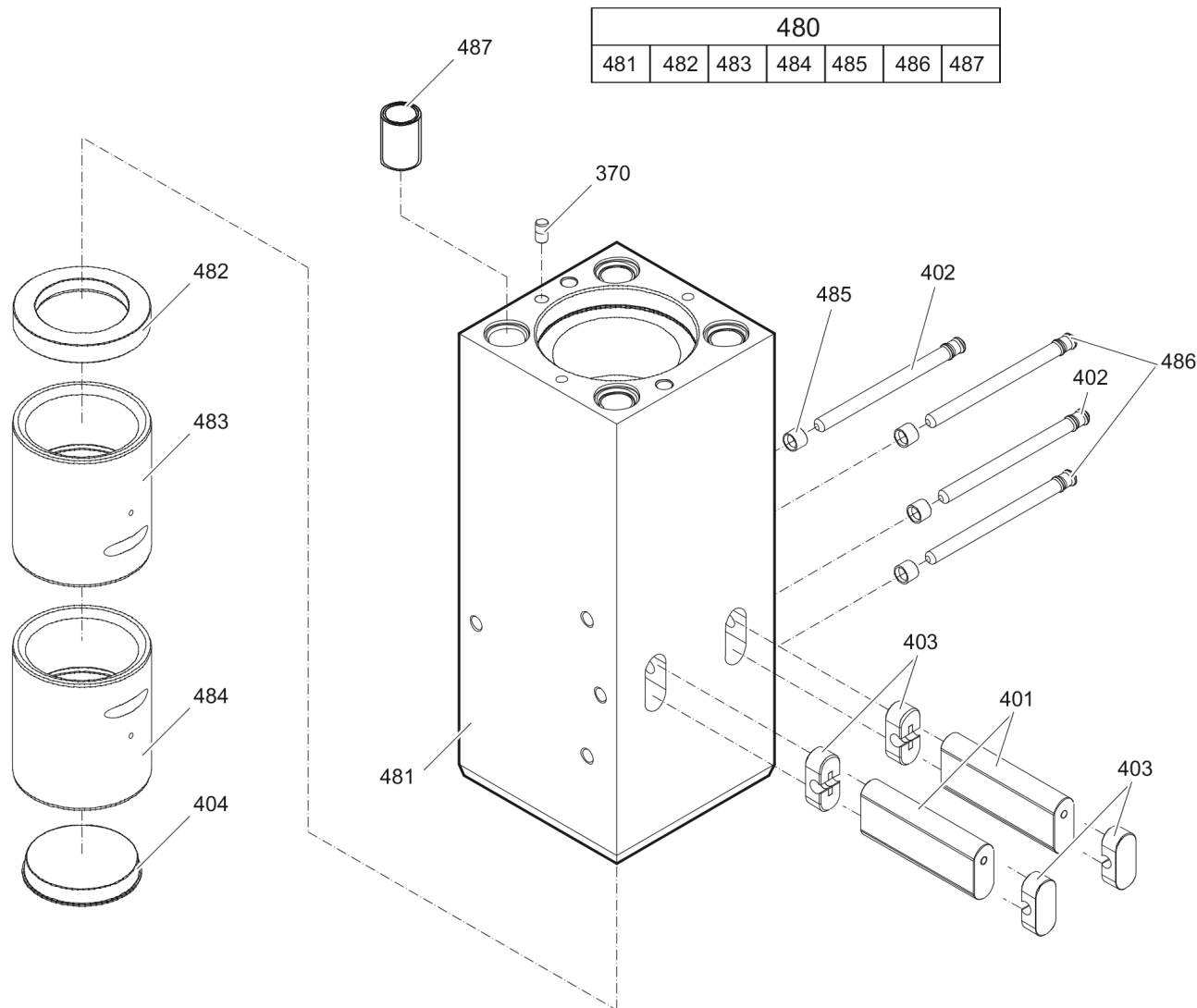
Comments for Page: Percussion unit part 2: cylinder

(L)OCAL REMARKS

A | with items 601-603

B | StartSelect

Mechanical Percussion unit part 3: lower breaker part

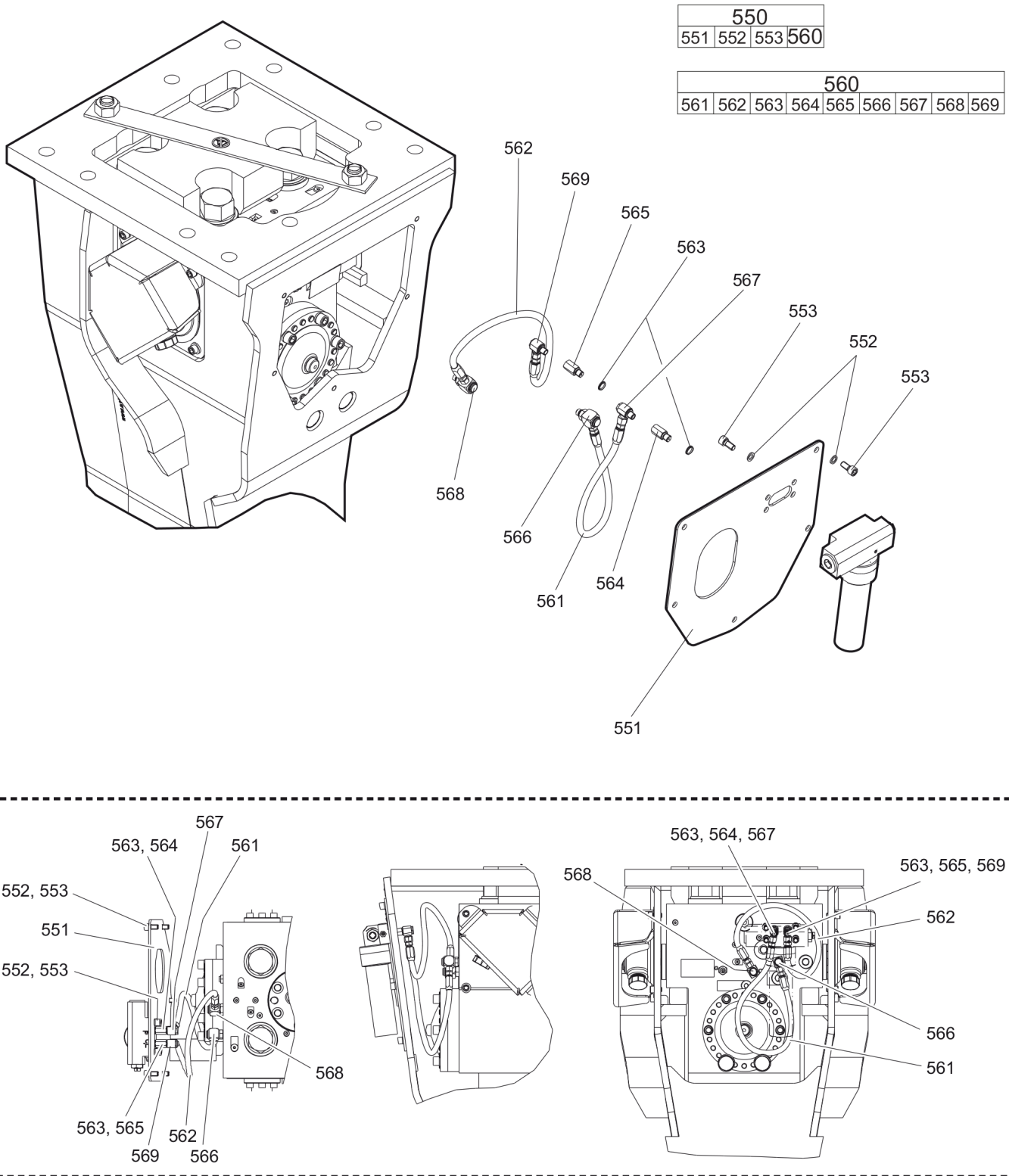


Item	Part No.	Name	Qty	L
370	3362268185	Lock pin	1	
401	3360981927	Retainer bar	2	
402	3361854347	Bolt	2	
403	3362262925	Plug	4	
404	3363085471	Protective cap	1	
480(481-487)	3363094603	Lower breaker part complete with lower wear bush steel	1	A
481		Lower breaker part	1	
482	3363097721	Impact ring	1	
483	3363097723	Wear bush	1	
484	3363097727	Wear bush (steel)	1	
485	3361854363	Locking bush	4	
486	3361854347	Bolt	2	
487	3363085499	Threaded insert	4	

Comments for Page: Percussion unit part 3: lower breaker part

(L)OCAL REMARKS

A | Note: When ordering a lower breaker part for DustProtector version it is imperative to order additionally the base for wiper (item 18) and the wiper (item 19).

Mechanical Connecting kit for automatic lubrication system

Item	Part No.	Name	Qty	L
550(551-560)		Connecting kit for automatic lubrication system	1	
551	3363098822	Plate	1	
552	3361850596	Pair of lock washers	9	
553	3360103750	Allen screw	9	A
560(561-569)	3363118210	Connecting kit for automatic lubrication system	1	B
561	3363083877	Hydraulic hose	1	C
562	3363087583	Hydraulic hose	1	D
563	3363066951	Seal	2	
564	3363068745	Adapter	1	E
565	3363066887	Adapter	1	E
566	3363087185	Fitting	1	E
567	3363066234	Fitting	1	E
568	3363087186	Fitting	1	E
569	3363066233	Fitting	1	E

Comments for Page: Connecting kit for automatic lubrication system

(L)OCAL REMARKS

A | secure all 4 allen screws with Loctite 243 screwed in the automatic lubrication system

B | without fastening elements

C | Oil line

secure with Loctite 243

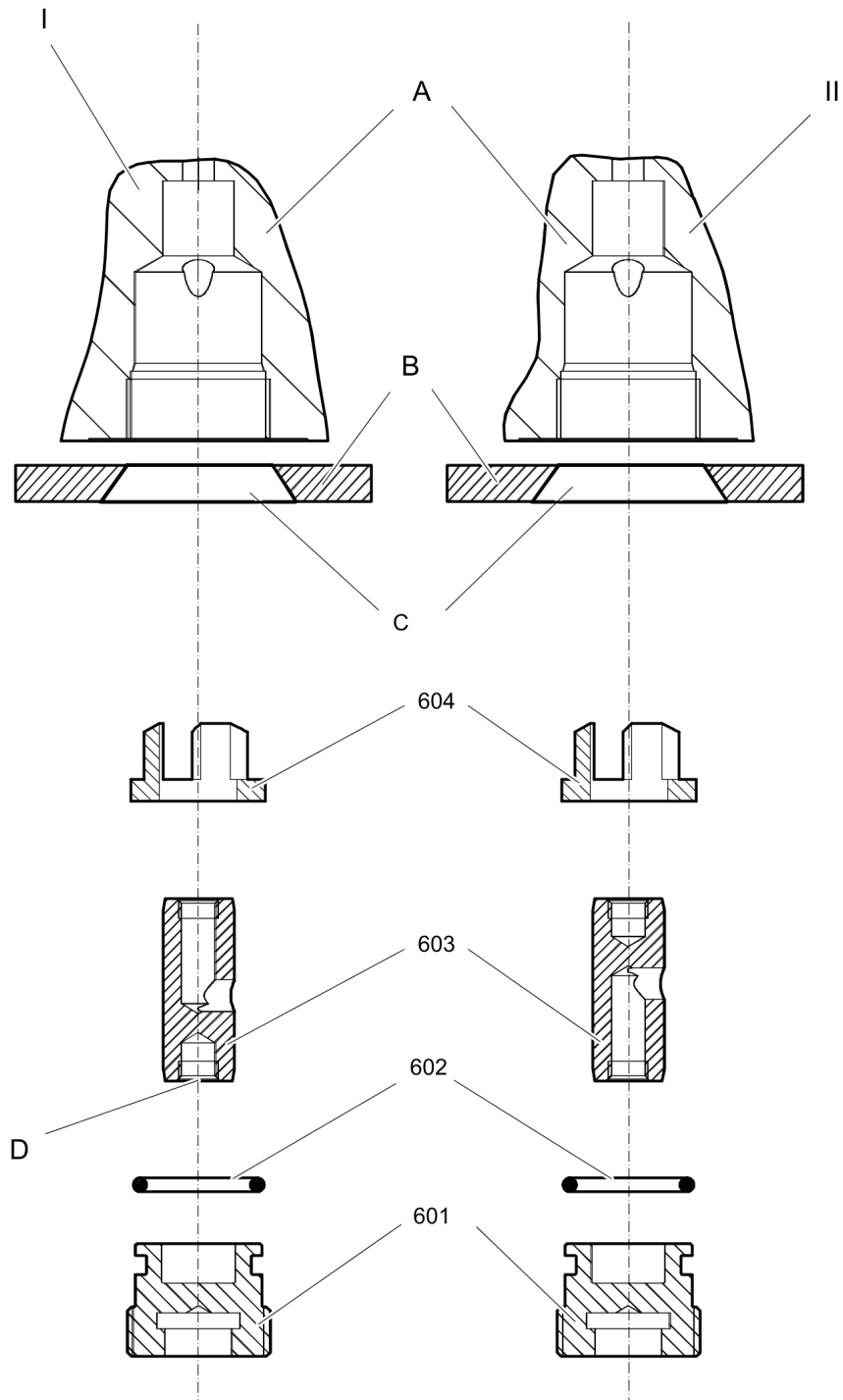
Route the hydraulic hoses as shown on the drawing. It must be ensured that the hydraulic hoses can move freely and are not in contact at any point.

D | Grease line

secure with Loctite 243

Route the hydraulic hoses as shown on the drawing. It must be ensured that the hydraulic hoses can move freely and are not in contact at any point.

E | secure with Loctite 243

Mechanical StartSelect - AutoStart or AutoStop

Item	Part No.	Name	Qty	L
601	3363082593	Plug	1	
602	3363083245	O-ring	1	
603	3363097755	Valve	1	A
604	3363097731	Sleeve	1	

Comments for Page: StartSelect - AutoStart or AutoStop

I = AutoStop setting

II = AutoStart setting (standard setting on delivery)

A. Port bore in cylinder

B. Wall of breaker box

C. Plug of breaker box

D. M 10 thread (both ends) for mounting

The position of the StartSelect unit is shown on the percussion unit illustrations.

(L)OCAL REMARKS

A | StartSelect

Mechanical Optional parts

NO EXPLODED VIEW
AVAILABLE
FOR THIS BOM

Item	Part No.	Name	Qty	L
11	3363097737	Floating ring (steel)	1	
484	3363097725	Wear bush (bronze)	1	

Mechanical Tightening torques

NO EXPLODED VIEW
AVAILABLE
FOR THIS BOM

Item	Part No.	Name	Qty	L
38	-	Allen screw - 80 Nm		A
44	-	Allen screw - 80 Nm		A
104	-	Allen screw - 380 Nm		B
107	-	Threaded plug - 300 Nm		C
110	-	Threaded plug - 300 Nm		D
130	-	Non-return valve - 200 Nm		E
138	-	Allen screw - 80 Nm		A
161	-	Fastening screw - 350 Nm		F
181	-	Filling valve - 130 Nm		G
182	-	Threaded plug - 20 Nm		H
191	-	Tensioning bolt		I
553	-	Allen screw - 85 Nm		A
561	-	Hydraulic hose - 42 Nm		J
562	-	Hydraulic hose - 16 Nm		K
564	-	Adapter - 55 Nm		J
565	-	Adapter - 45 Nm		J
566	-	Fitting - 60 Nm		L
567	-	Fitting - 55 Nm		M
568	-	Fitting - 50 Nm		N
569	-	Fitting - 45 Nm		O
601	-	Plug - 200 Nm		B

Comments for Page: Tightening torques

(L)OCAL REMARKS

A | Allen key size 10

B | Allen key size 17

C | Allen key size 22

D | Socket spanner size 24

E | Socket spanner size 41

F | Allen key size 14

G | Socket spanner size 22

H | Allen key size 5

I | Torque wrench or Power wrench size 65

1. Pretighten the tensioning bolts to 500 Nm, proceeding in a crosswise fashion,
2. then tighten each tensioning bolt through 120° (2 sides of hexagonal head) in a crosswise fashion,
3. finally tighten each tensioning bolt again through 150° (2 1/2 sides of hexagonal head) in a crosswise fashion.

J | Open-ended wrench size 19

K | Open-ended wrench size 17

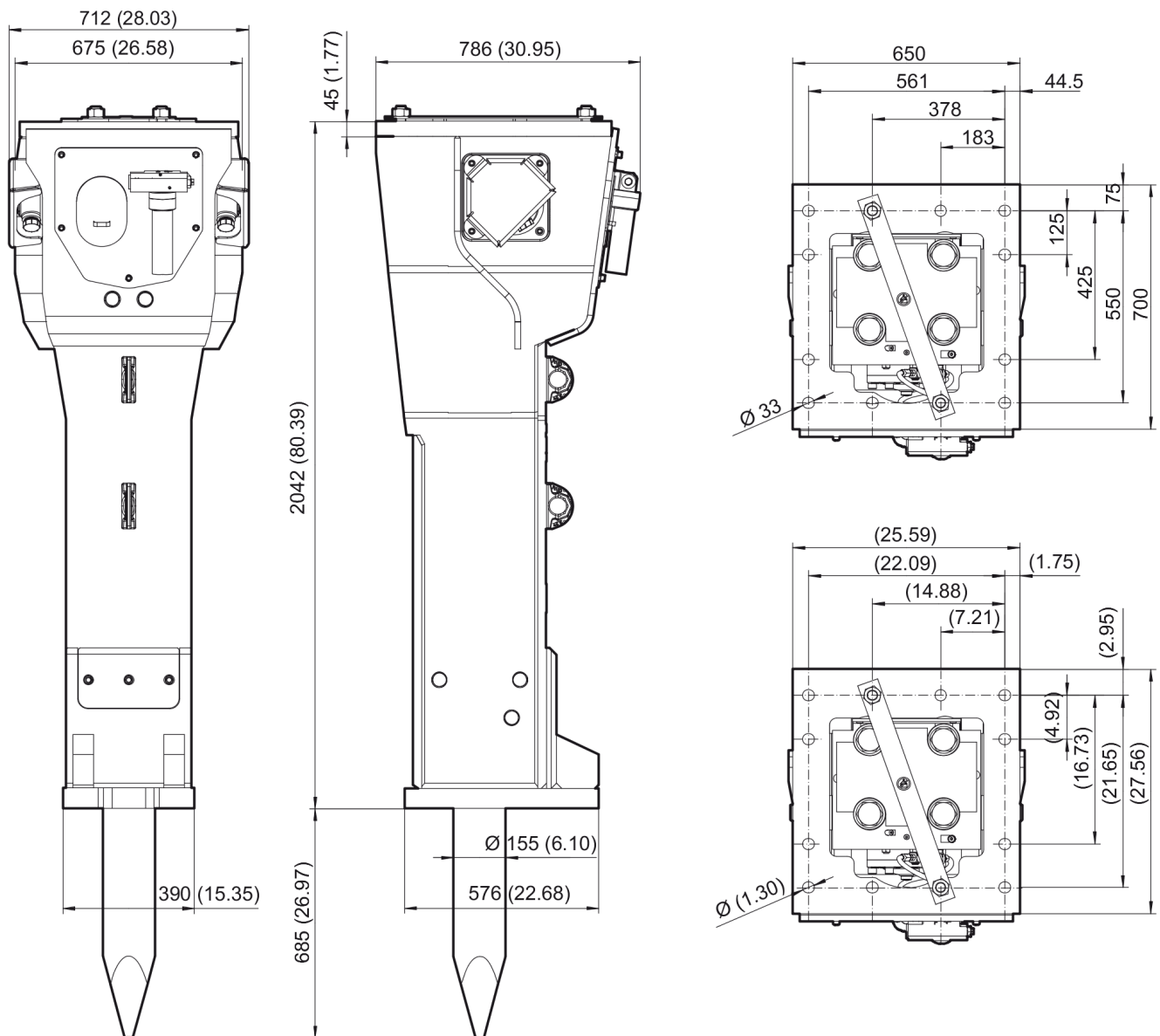
L | Open-ended wrench size 19, 22, 27

M | Open-ended wrench size 19, 22

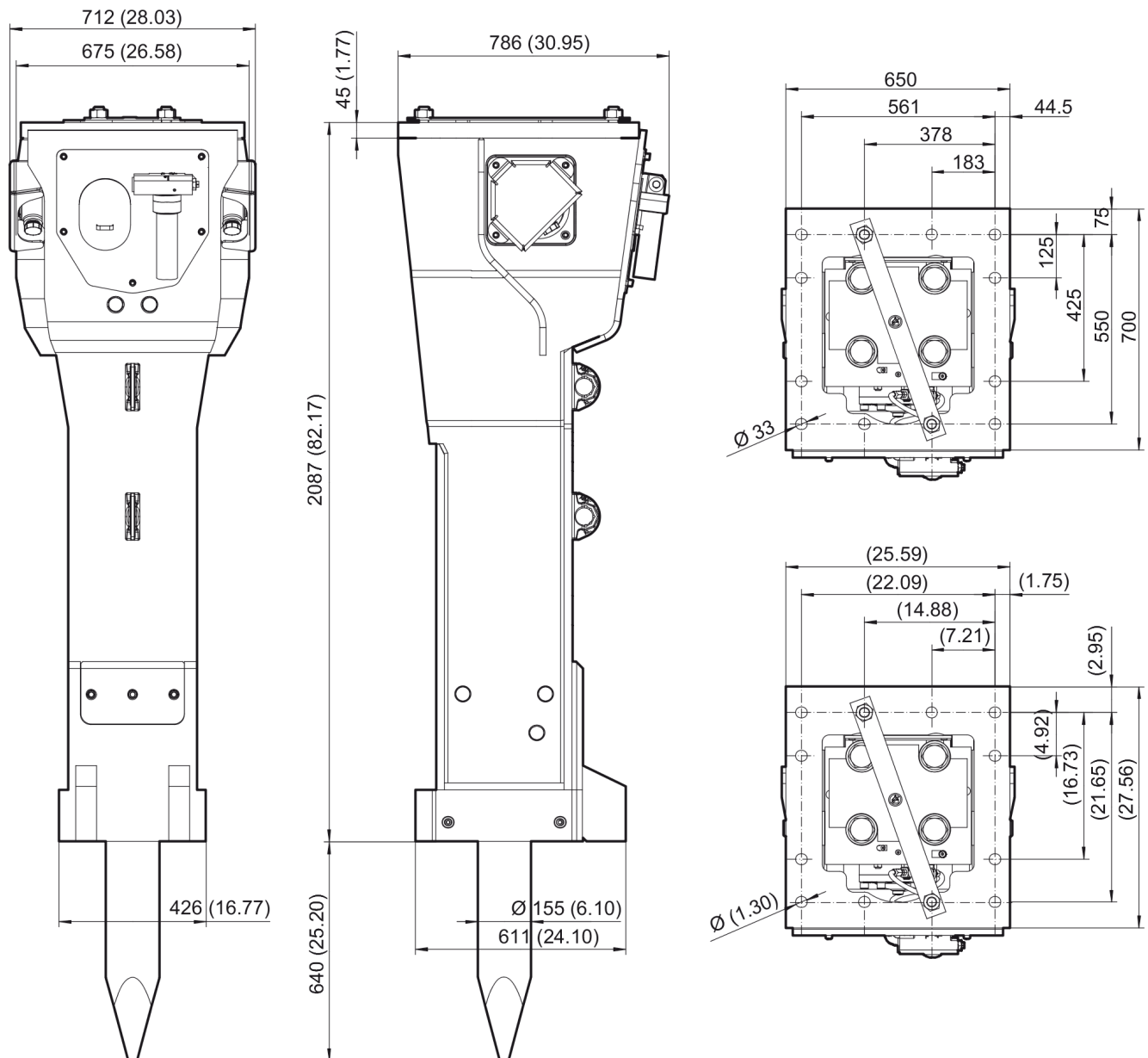
N | Open-ended wrench size 17, 22, 27

O | Open-ended wrench size 17, 19, 22

This page intentionally left blank

Mechanical Dimensions HB 2500

This page intentionally left blank

Mechanical Dimensions HB 2500 DustProtector

Refer to Parts Online for the most up to date information. The printed information might be outdated.

Tue May 31 01:53:18 MDT 2016

This page intentionally left blank

Options / accessories Hydraulic hoses

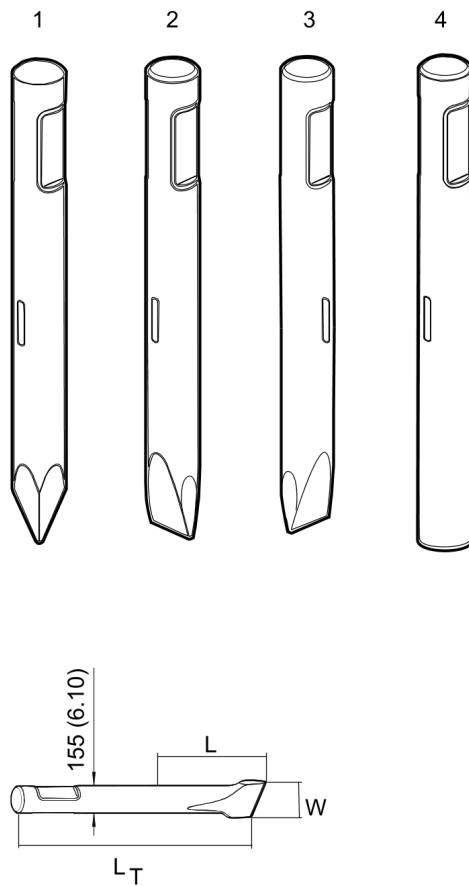
NO EXPLODED VIEW
AVAILABLE
FOR THIS BOM

Item	Part No.	Name	Qty	L
-	3363031190	Hydraulic hose, I.D. 25 (1"), both ends JIC 1 5/8", length 2300 mm (91 in.)	2	
-	3363031191	Hydraulic hose, I.D. 25 (1"), both ends JIC 1 5/8", length 2800 mm (110 in.)	2	

Options / accessories Optional equipment

NO EXPLODED VIEW
AVAILABLE
FOR THIS BOM

Item	Part No.	Name	Qty	L
-	3363091200	Chisel paste cartridge, 12 x 500 g (1.1 lbs)	1	
-	3363034567	Grease gun for 500 g cartridge	1	
-	3360433774	Grease nipple	1	
-	3363089844	Service box with nitrogen cylinder, 2 l, 0.43 gal (0.53 US gal)	1	
-	3363094940	Service box without nitrogen cylinder	1	
-	3363099205	Test gauge	1	
-	3363094952	Inside callipers upper wear bush	1	
Not Shown	-	Adapter plate matching the carrier Consult the Atlas Copco Customer Center/Dealer in your area.	1	
-	3363099795	Base plate with threaded inserts	1	
-	3363087303	Bolt kit	1	
-	3363100699	Base plate with through borings	1	
-	3363094575	Bolt kit	1	
-	3360209445	Allen key (22 mm)	1	
-	3363090531	Adapter kit for underwater applications	1	
-	3363097761	Piston retainer	1	

Options / accessories Working tools ClassicLine HB 2500

Item	Part No.	Name	Qty	L
1	3363094613	Moil point	1	A
1	3363094614	Moil point	1	B
2	3363094616	Chisel (cross)	1	C
2	3363094617	Chisel (cross)	1	D
3	3363094619	Chisel (parallel)	1	E
3	3363094620	Chisel (parallel)	1	F
4	3363094611	Blunt tool	1	G
4	3363097743	Blunt tool	1	H

Comments for Page: Working tools ClassicLine HB 2500

(L)OCAL REMARKS

A | L=480 mm, Lt=1150 mm, Wt=147.0 kg

L=18.9 inch, LT=45.28 inch, Wt=324.5 lb

B | L=680 mm, Lt=1350 mm, Wt=177.0 kg

L=26.77 inch, LT=53.15 inch, Wt=389.8 lb

C | W=155 mm, L=480 mm, Lt=1150 mm, Wt=154.0 kg

W=6.10 inch, L=18.90 inch, LT=45.28 inch, Wt=339.7 lb

D | W= 155 mm, L=680 mm, Lt=1350 mm, Wt=184.0 kg

W=6.10 inch, L=26.77 inch, LT=53.15 inch, Wt=405.0 lb

E | W= 155 mm, L=480 mm, Lt=1150 mm, Wt=154.0 kg

W=6.10 inch, L=18.90 inch, LT=45.28 inch, Wt=339.7 lb

F | W= 155 mm, L=680 mm, Lt=1350 mm, Wt=184.0 kg

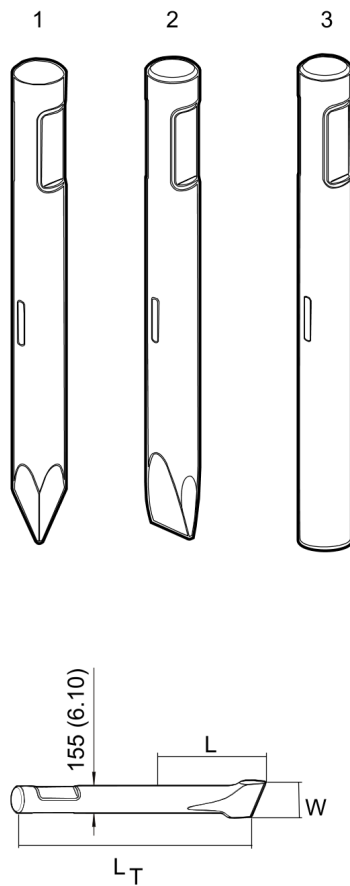
W=6.10 inch, L=26.77 inch, LT=53.15 inch, Wt=405.0 lb

G | L=480 mm, Lt=1150 mm, Wt=166.0 kg

L=18.90 inch, LT=45.28 inch, Wt=366.0 lb

H | L= 680 mm, Lt=1350 mm, Wt=196.0 kg

L=26.77 inch, LT=53.15 inch, Wt=431.3 lb

Options / accessories Working tools SilverLine HB 2500

Item	Part No.	Name	Qty	L
1	3363094919	Moil point	1	A
2	3363094918	Chisel (cross)	1	B
3	3363097763	Blunt tool	1	C

Comments for Page: Working tools SilverLine HB 2500

(L)OCAL REMARKS

A | L=680 mm, Lt=1350 mm, Wt=177.0 kg

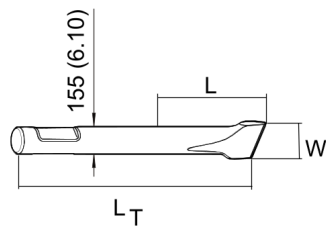
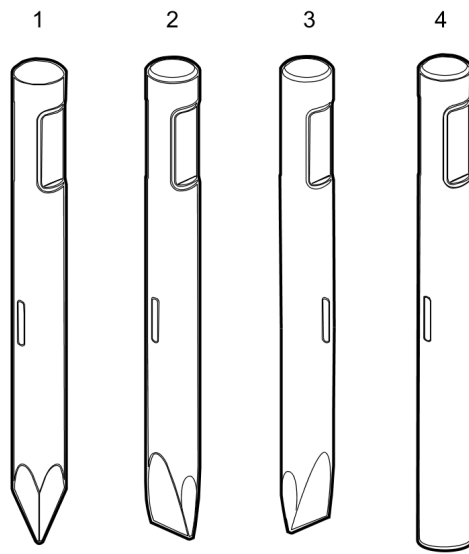
L=26.77 inch, LT=53.15 inch, Wt=389.8 lb

B | W= 155 mm, L=680 mm, Lt=1350 mm, Wt=184.0 kg

W=6.10 inch, L=26.77 inch, LT=53.15 inch, Wt=405.0 lb

C | L=680 mm, Lt=1350 mm, Wt=196.0 kg

L=26.77 inch, LT=53.15 inch, Wt=431.3 lb

Options / accessories Working tools ClassicLine HB 2500 DP

Item	Part No.	Name	Qty	L
1	3363094613	Moil point	1	A
1	3363094614	Moil point	1	B
2	3363094616	Chisel (cross)	1	C
2	3363094617	Chisel (cross)	1	D
3	3363094619	Chisel (parallel)	1	E
3	3363094620	Chisel (parallel)	1	F
4	3363094611	Blunt tool	1	G
4	3363097743	Blunt tool	1	H

Comments for Page: Working tools ClassicLine HB 2500 DP

(L)OCAL REMARKS

A | L=435 mm, Lt=1150 mm, Wt=147.0 kg

L=17.13 inch, LT=45.28 inch, Wt=324.5 lb

B | L=635 mm, Lt=1350 mm, Wt=177.0 kg

L=25.00 inch, LT=53.15 inch, Wt=389.8 lb

C | W= 155 mm, L=435 mm, Lt=1150 mm, Wt=154.0 kg

W=6.10 inch, L=17.13 inch, LT=45.28 inch, Wt=389.7 lb

D | W= 155 mm, L=635 mm, Lt=1350 mm, Wt=184.0 kg

W=6.10 inch, L=25.00 inch, LT=53.15 inch, Wt=405.0 lb

E | W= 155 mm, L=435 mm, Lt=1150 mm, Wt=154.0 kg

W=6.10 inch, L=17.13 inch, LT=45.28 inch, Wt=339.7 lb

F | W= 155 mm, L=635 mm, Lt=1350 mm, Wt=184.0 kg

W=6.10 inch, L=25.00 inch, LT=53.15 inch, Wt=405.0 lb

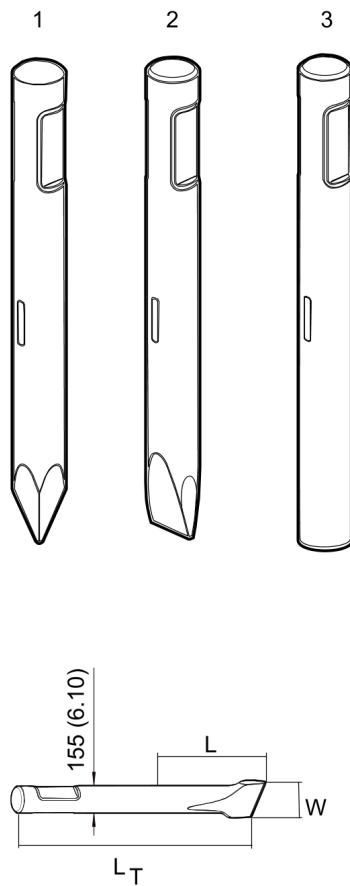
G | L=435 mm, Lt=1150 mm, Wt=166.0 kg

L=17.13 inch, LT=45.28 inch, Wt=366.0 lb

H | L= 635 mm, Lt=1350 mm, Wt=196.0 kg

L=25.00 inch, LT=53.15 inch, Wt=431.3 lb

This page intentionally left blank

Options / accessories Working tools SilverLine HB 2500 DP

Item	Part No.	Name	Qty	L
1	3363094919	Moil point	1	A
2	3363094918	Chisel (cross)	1	B
3	3363097763	Blunt tool	1	C

Comments for Page: Working tools SilverLine HB 2500 DP

(L)OCAL REMARKS

A | L=635 mm, Lt=1350 mm, Wt=177.0 kg

L=25.00 inch, LT=53.15 inch, Wt=389.8 lb

B | W= 155 mm, L=635 mm, Lt=1350 mm, Wt=184.0 kg

W=6.10 inch, L=25.00 inch, LT=53.15 inch, Wt=405.0 lb

C | L=635 mm, Lt=1350 mm, Wt=196.0 kg

L=25.00 inch, LT=53.15 inch, Wt=431.3 lb

Any unauthorized use or copying of the contents or any part thereof is prohibited.
This applies in particular to trademarks, model denominations, part numbers, and drawings.

