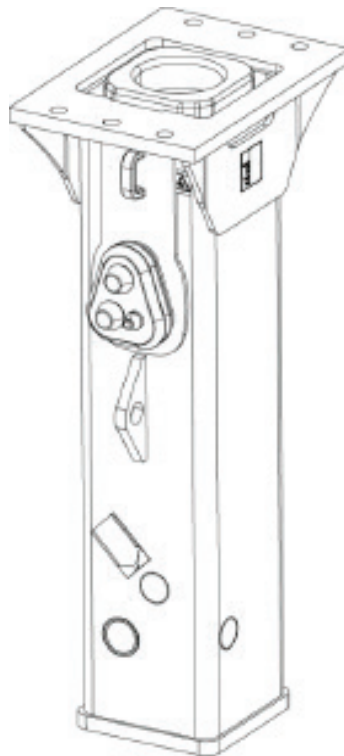


EC 60T

Spare parts list Hydraulic breakers

EC 60T s/n BES140034 –



General information

This spare parts list applies to the following:

Part number	Description
8460050092	EC 60T
8460050112	EC 60T
8460050137	EC 60T HATCON
8460050144	EC 60T HATCON LTE

Use only authorized parts. Any damage or malfunction caused by the use of unauthorized parts is not covered by Warranty or Product Liability. Any unauthorized use or copying of the contents or any part thereof is prohibited. This applies in particular to trademarks, model denominations, part numbers, and drawings.

Instructions for use

This spare parts list contains no safety regulations and is merely intended to assist in the ordering of spare parts.

For information about operating, servicing, or repairing, the relevant Safety and operating instructions must be consulted at all costs.

Please observe the safety instructions listed in the relevant Safety and operating instructions!

Service, repair and wear part kits

Label kit	1
Seal kit	3

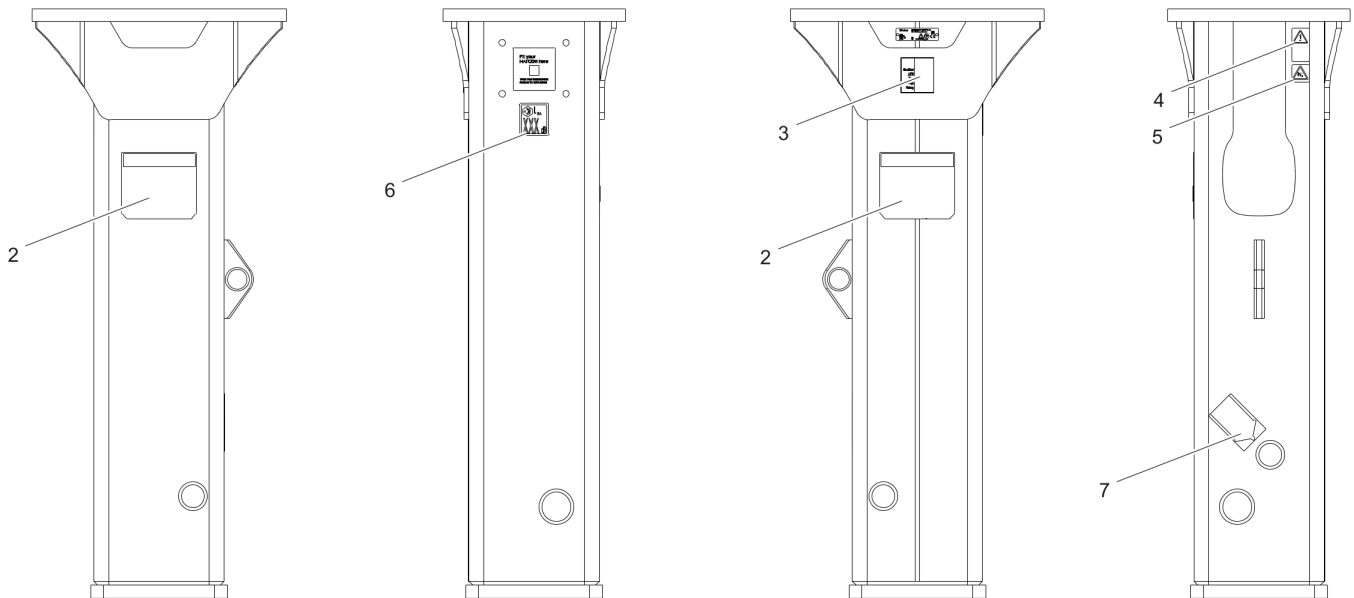
Mechanical

Hydraulic breaker	5
Percussion unit	7
HATCON (Horizontal)	9
Tightening torques	11
Assembly instruction	13
Dimensions	14

Options/accessories

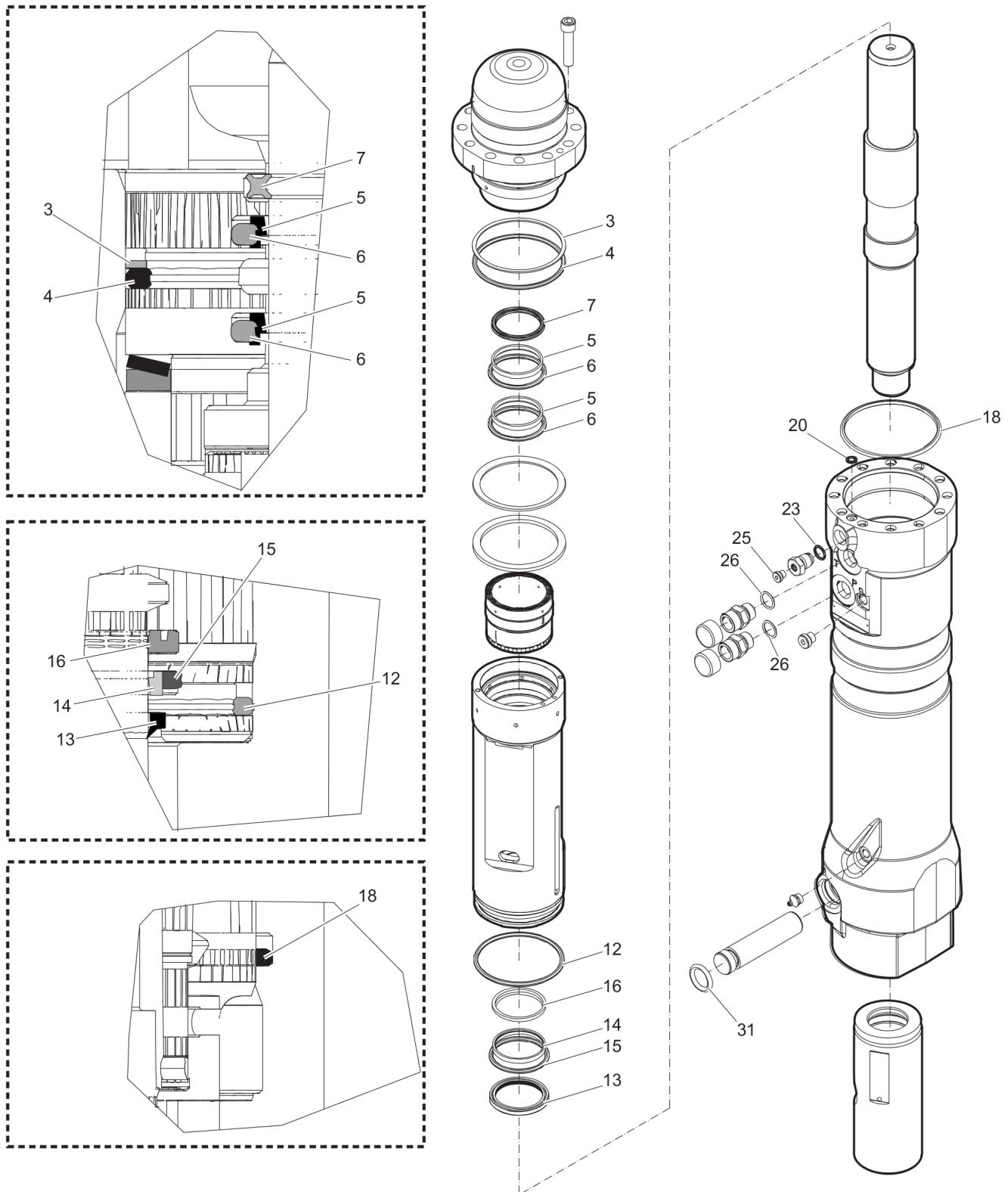
Hydraulic hose	16
Optional equipment	19
Working tools	21

Service, repair and wear part kits Label kit



Item	Part No.	Name	Qty	L
1	3382070015	LABEL KIT	1	
2		PRODUCT LABEL	2	
3		AEM SIGN	1	
4		SAFETY LABEL	1	
5		SAFETY LABEL	1	
6		SOUND POWER LABEL	1	
7		LABEL - LUBRICATING SYMBOL	1	

Service, repair and wear part kits Seal kit



Refer to the DocMine web page for most up-to-date information. The printed information might be outdated.

Fri Jun 16 08:34:20 UTC 2023

Item	Part No.	Name	Qty	L
1	3382070008	SEAL KIT	1	
3	3361192036	BACK-UP RING	1	A
4	3363091712	O-RING	1	B
5	3361192032	SEAL	2	
6	3361192033	O-RING	2	C
7	3361192031	QUADRING	1	D
12	3363091709	O-RING	1	E
13	3361192041	WIPER	1	F
14	3361192039	SEAL	1	
15	3361192040	O-RING	1	G
16	3361192038	SEAL	1	H
18	3315296615	SEAL	2	
20	3115329002	SEAL RING	1	
23	0663925100	O-RING	1	I
25	3360478426	THREADED PLUG	1	
26	3361192067	O-RING	2	
31	0663212006	O-RING	1	J
-	3360192066	O-RING	1	

Comments for Page: Seal kit

A | 108.66 x 4.65 mm (4.28 x 0.18 in.)

B | 107.32 x 5.33 mm (4.23 x 0.21 in.)

C | 62.87 x 5.33 mm (2.48 x 0.21 in.)

D | 56.69 x 5.33 mm (2.23 x 0.21 in.)

E | 104.14 x 5.33 mm (4.10 x 0.21 in.)

F | 60 x 68 x 4 x 7 mm (2.36 x 2.68 x 0.16 x 0.28 in.)

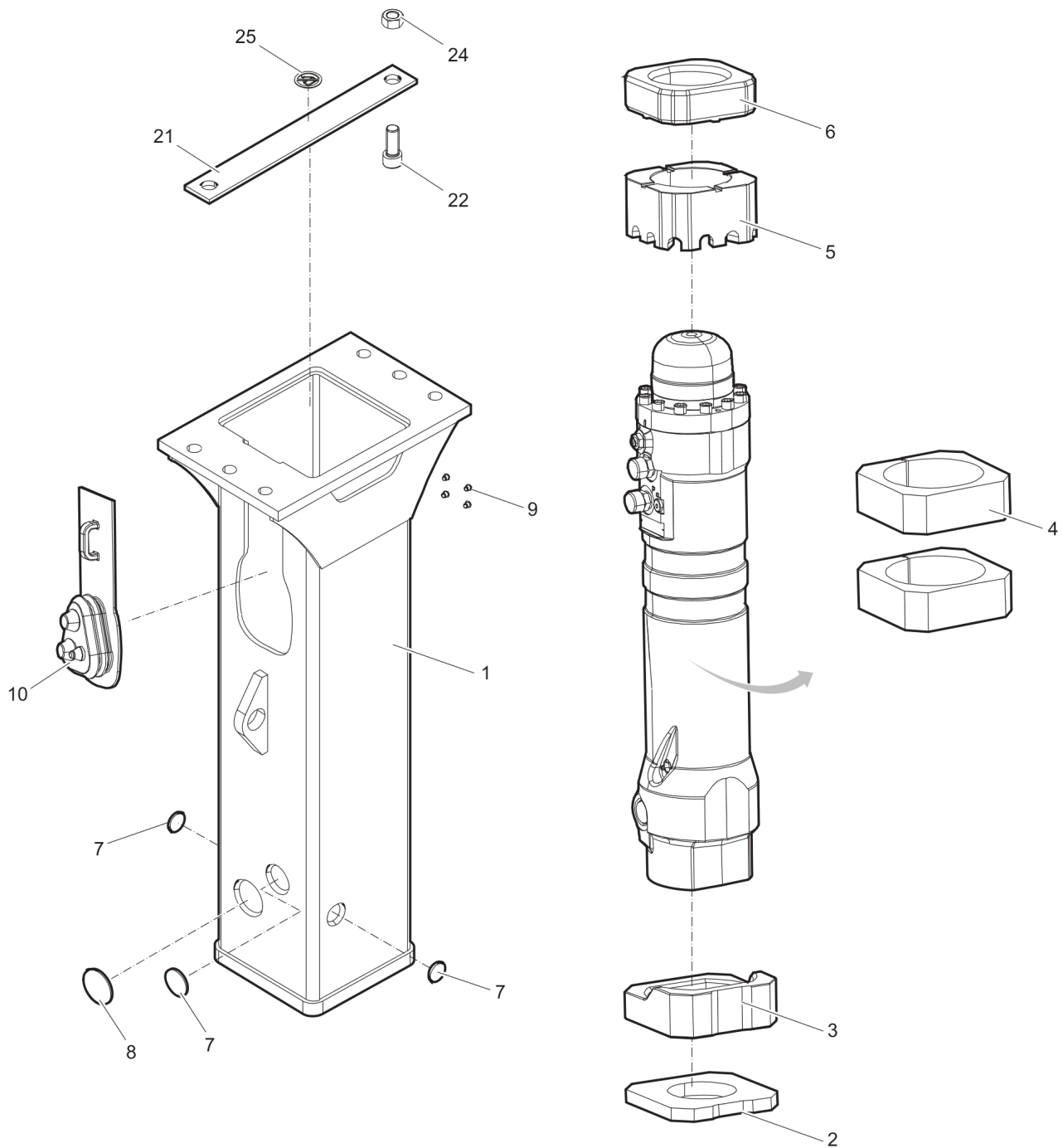
G | 66.04 x 5.33 mm (2.60 x 0.21 in.)

H | 60 x 75.5 x 7 mm (2.36 x 2.97 x 0.28 in.)

I | 15.08 x 2.62 mm (0.59 x 0.10 in.)

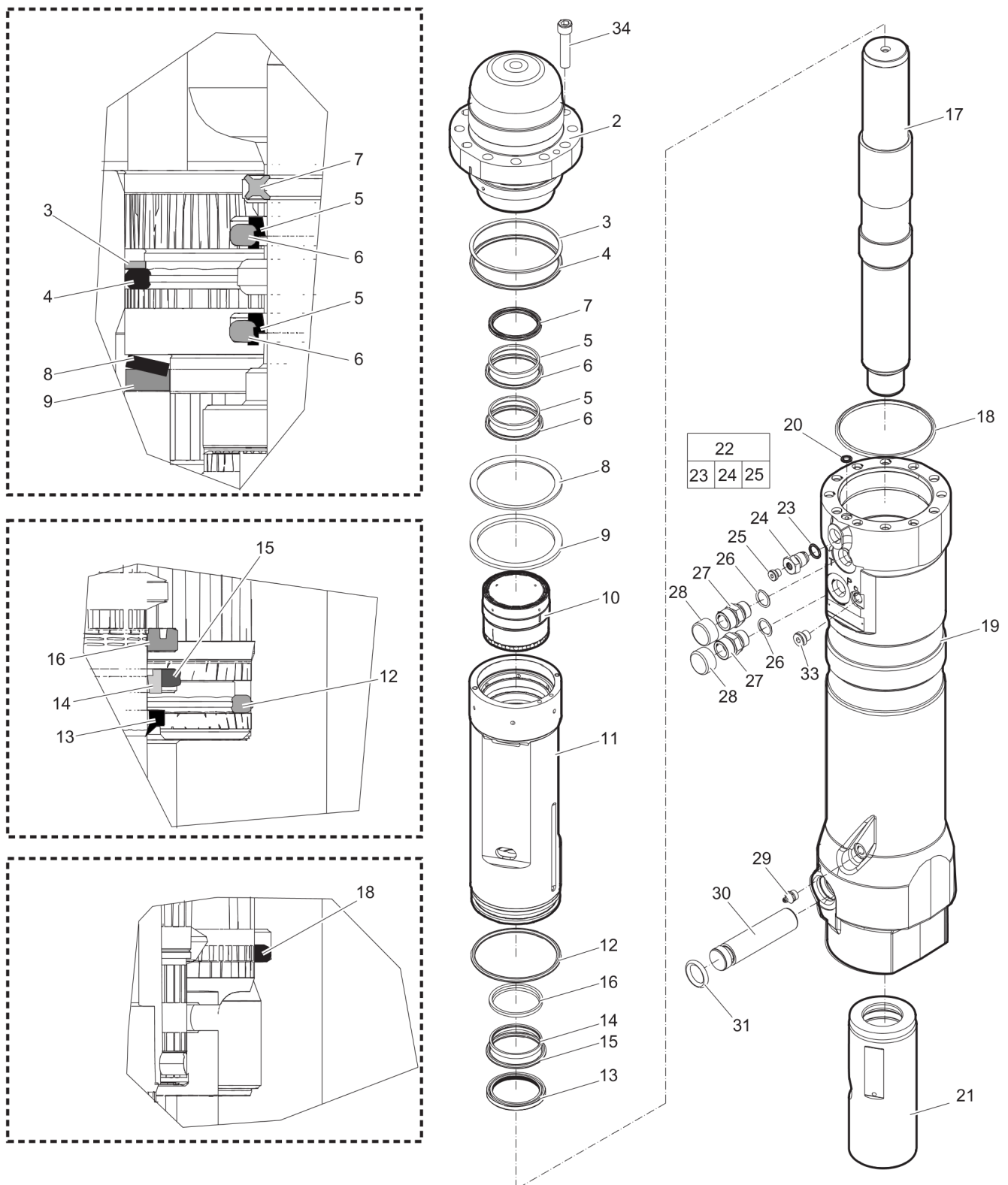
J | 26 x 6 mm (1.02 x 0.24 in.)

Mechanical Hydraulic breaker



Item	Part No.	Name	Qty	L
1	3362130002	BREAKER BOX	1	
2	3362430001	SHOCK ABSORBER	1	
3	3315289720	LOWER GUIDE PLATE	1	
4	3362430003	UPPER GUIDE PLATE	2	
5	3315431400	SPACER	1	
6	3315431300	SHOCK ABSORBER	1	
7	3362491004	PLUG	3	
8	3362491007	PLUG	1	
9	3315439145	PROTECTIVE PLUG HATCON	4	
10	3362491006	COVER	1	
21	3362491016	TRANSPORT SAFETY DEVICE	1	
22	0211155703	HEX SOCK SCREW	2	
24	3360103251	NUT	2	
25	3363091872	LABEL TRANSPORT SAFETY DEVICE	1	

Mechanical Percussion unit

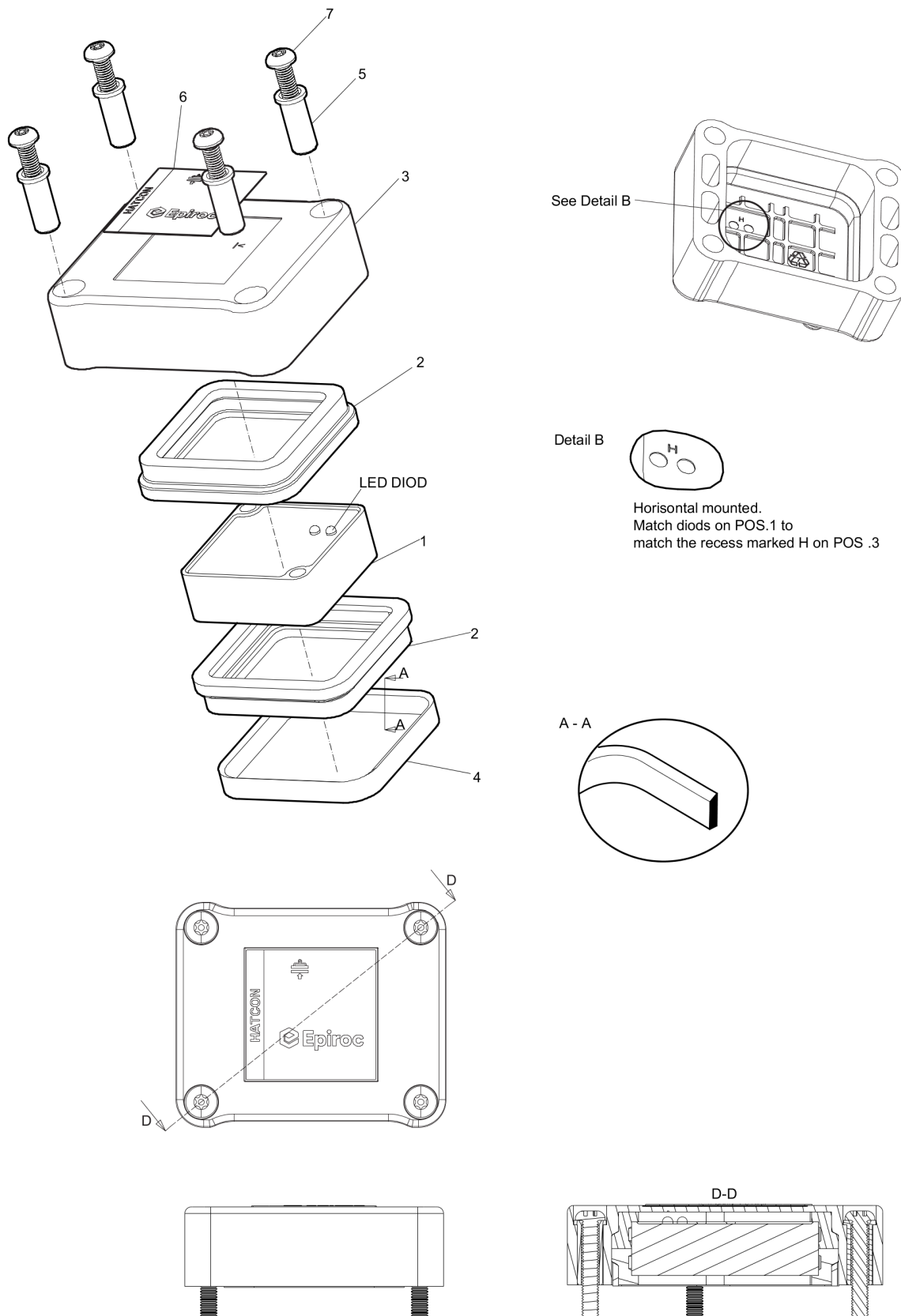


Refer to the DocMine web page for most up-to-date information. The printed information might be outdated.

Fri Jun 16 08:34:24 UTC 2023

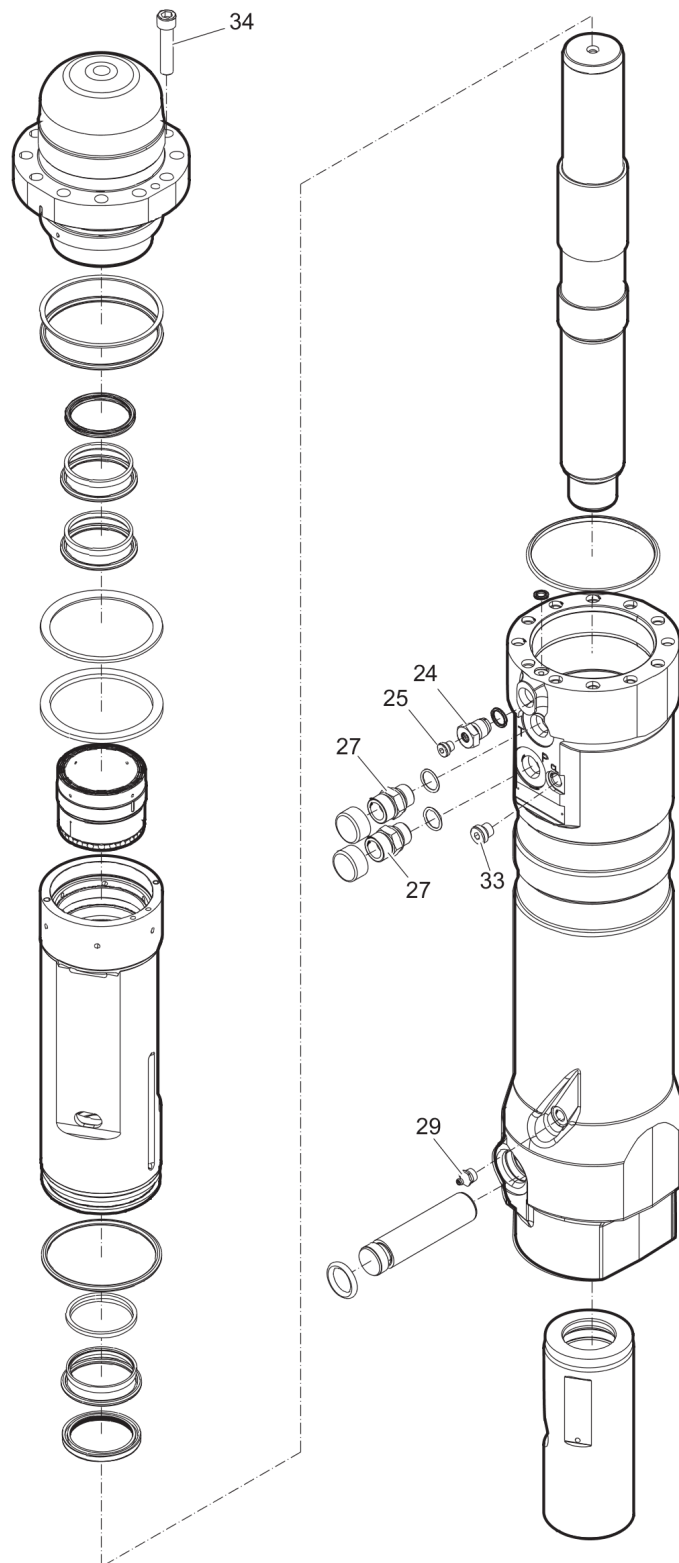
Item	Part No.	Name	Qty	L
2	3315416500	BACK HEAD	1	
3	3361192036	BACK-UP RING	1	
4	3363091712	O-RING	1	
5	3361192032	SEAL	2	
6	3361192033	O-RING	2	
7	3361192031	QUADRING	1	
8	3361130004	PLATE SPRING	1	
9	3361130005	SPACER	1	
10	3361130106	CONTROL VALVE	1	
11	3361130002	CYLINDER BUSH	1	
12	3363091709	O-RING	1	
13	3361192041	WIPER	1	
14	3361192039	SEAL	1	
15	3361192040	O-RING	1	
16	3361192038	SEAL	1	
17	3315332730	PISTON	1	
18	3315296615	SEAL	1	
19	3315429505	CYLINDER HOUSING	1	
20	3115329002	SEAL RING	1	
21	3361130009	WEAR BUSH	1	
22	3363087286	FILLING VALVE, complete	1	
23	0663925100	O-RING	1	
24		FILLING VALVE	1	
25	3360478426	THREADED PLUG	1	
26	3361192067	O-RING	2	
27	3361031476	FITTING	2	
28	3361353486	CAP	2	
29	3360433774	GREASE NIPPLE	1	
30	3315429515	TOOL RETAINER	1	
31	0663212006	O-RING	1	
33	3363066963	PLUG	1	
34	3315431100	SCREW	12	

Mechanical HATCON (Horizontal)



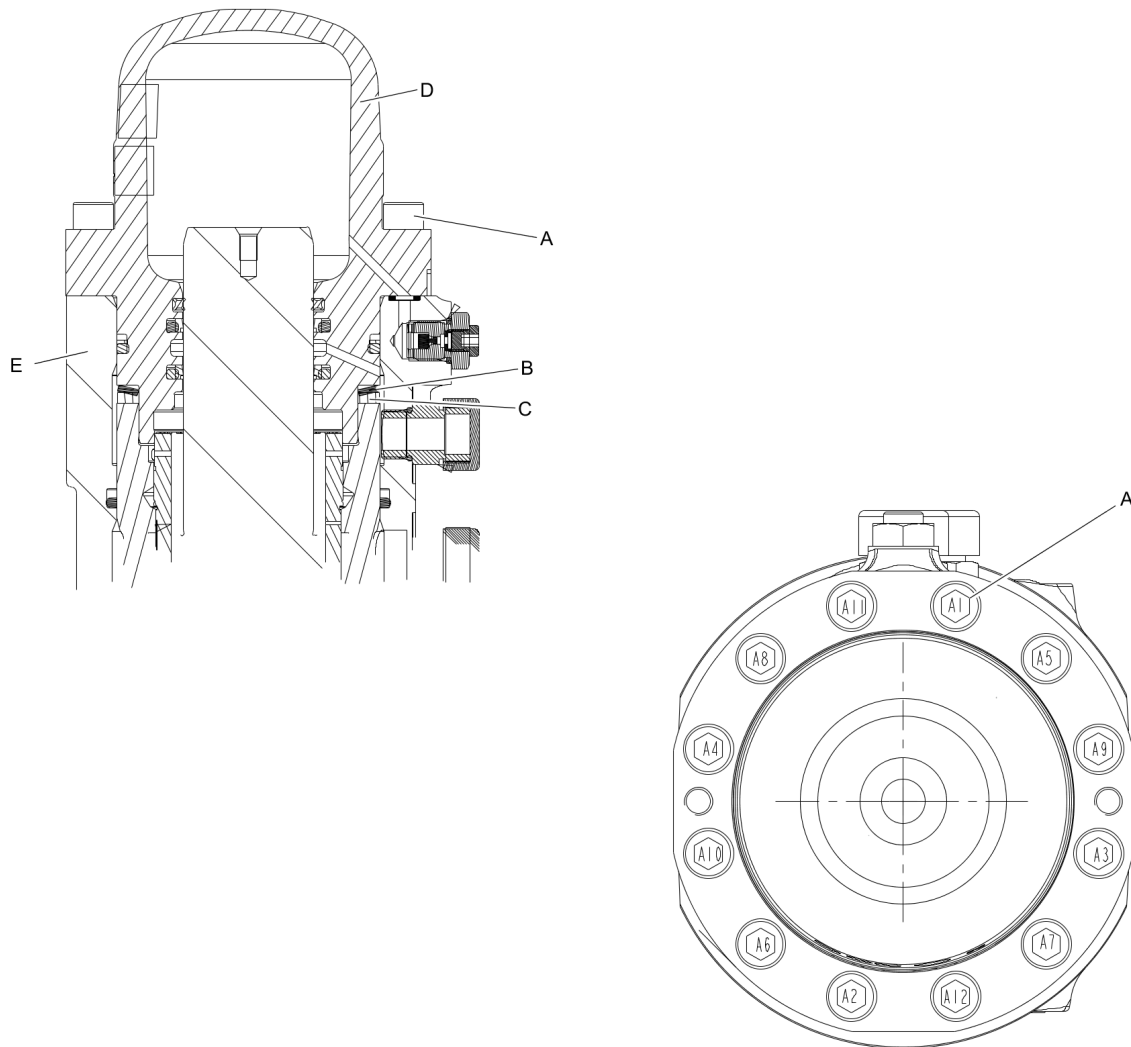
Item	Part No.	Name	Qty	L
1		TRACKING MODULE HATCON	1	
2	3315439130	DAMPER HATCON	2	
3	3315439110	HOUSING TYPE 1 HATCON	1	
4	3315439140	LOCK RING HATCON	1	
5	3315439120	SLEEVE HATCON	4	
6	3315439100	PRODUCT LABEL HATCON	1	
7	3315442610	SCREW HATCON	4	

Mechanical Tightening torques



Item	Part No.	Name	Qty	L
24	-	FILLING VALVE - 130 Nm (96 ft lbf)	-	
25	-	THREADED PLUG - 20 Nm (15 ft lbf)	-	
27	-	FITTING - 90 Nm (66 ft lbf)	-	
29	-	GREASE NIPPLE - 20 Nm (15 ft lbf)	-	
33	-	PLUG - 30 Nm (22 ft lbf)	-	
34	-	SCREW - 78 Nm (58 ft lbf)	-	

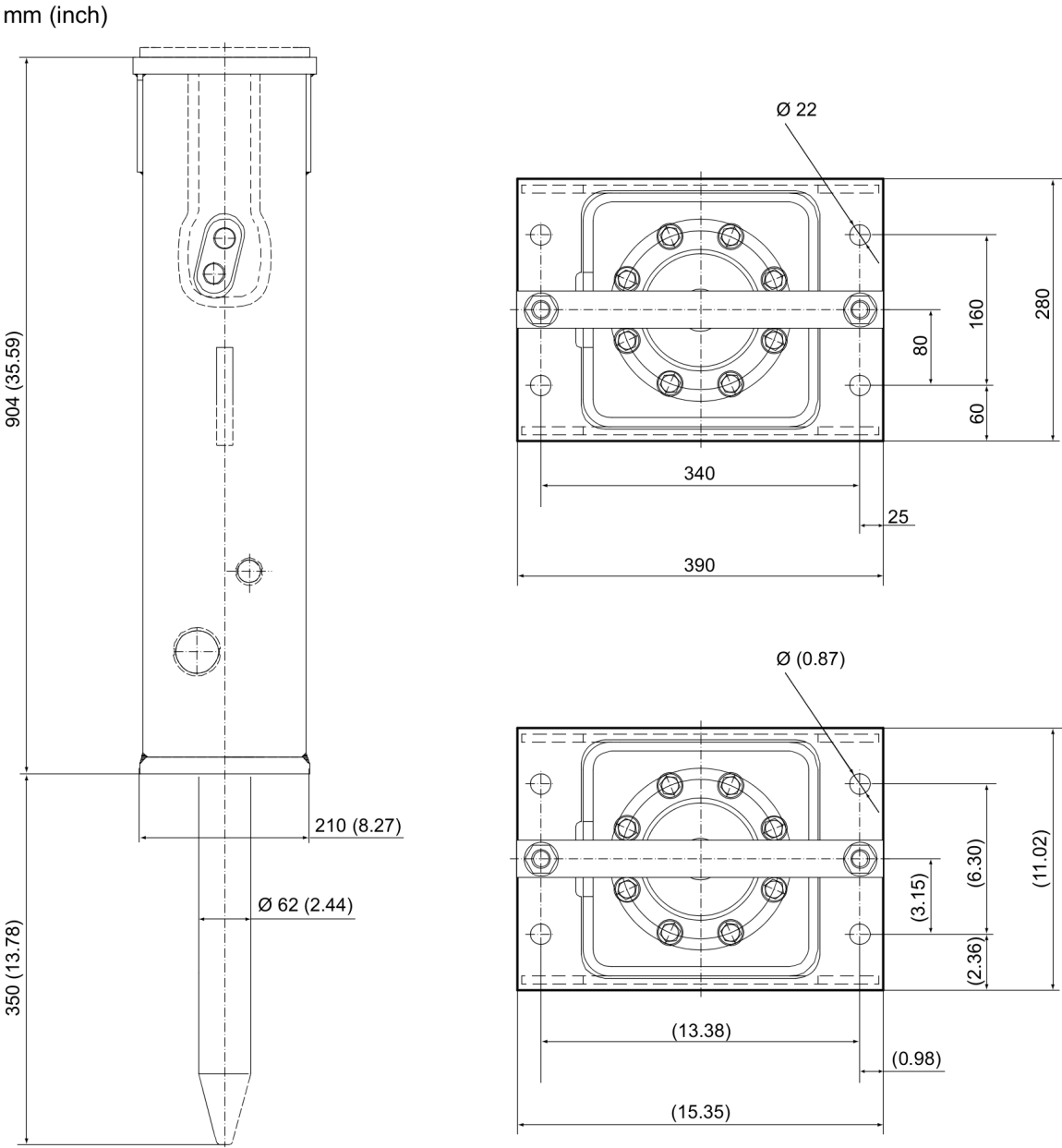
Mechanical Assembly instruction



1. Make sure the spring plate (B) and spacer (C) are centered before mounting the back head (D).
2. Press the back head (D) down on the spring plate (B) and spacer (C).
3. Grease the screws (A) with Molykote® 1000 (Molykote is a registered trademark of Dow Corning Corporation), and manually fit them on the back head (D)
4. Torque the screws (A) in the order from A1 to A12 in one step.

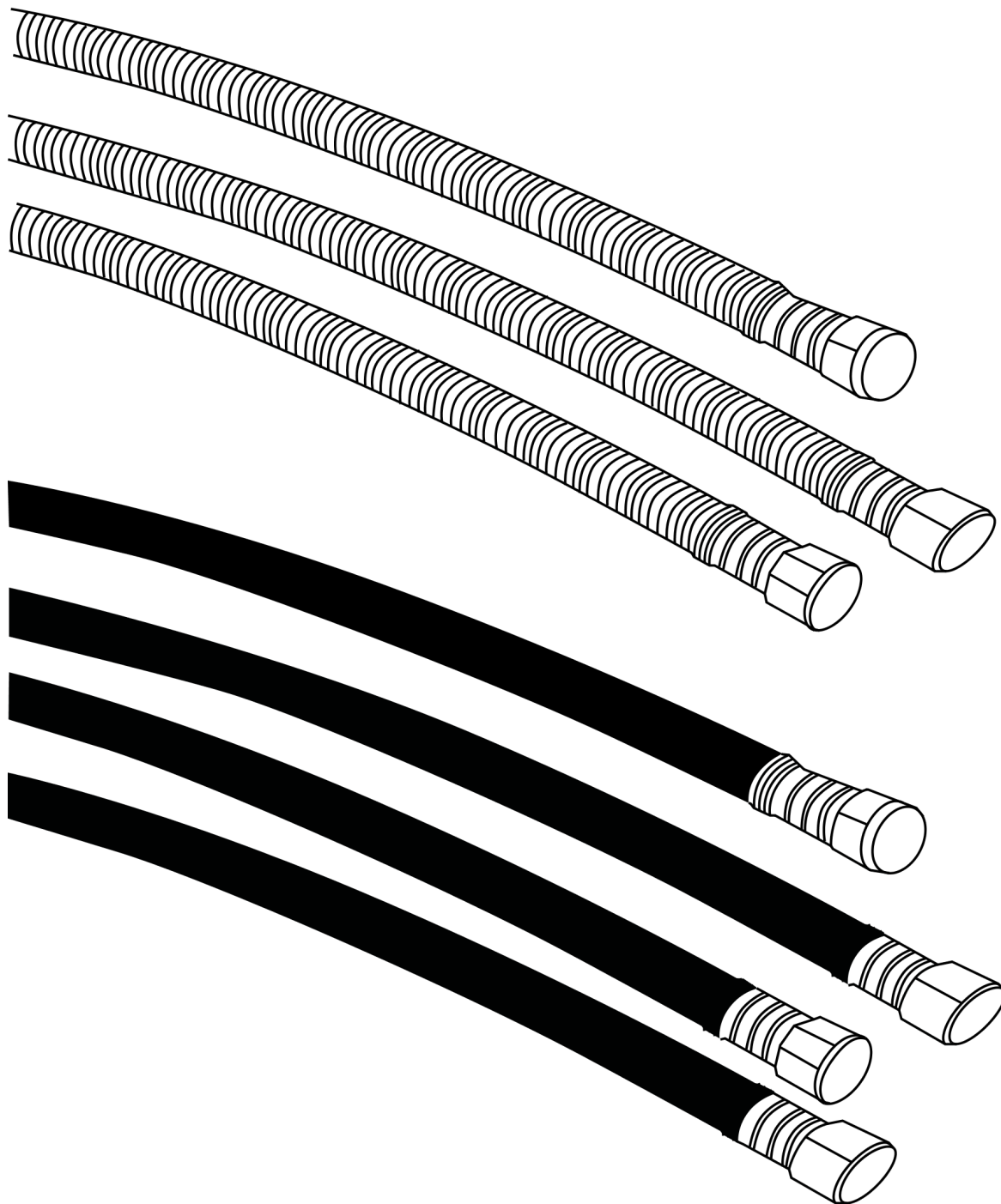
This page intentionally left blank

Mechanical Dimensions



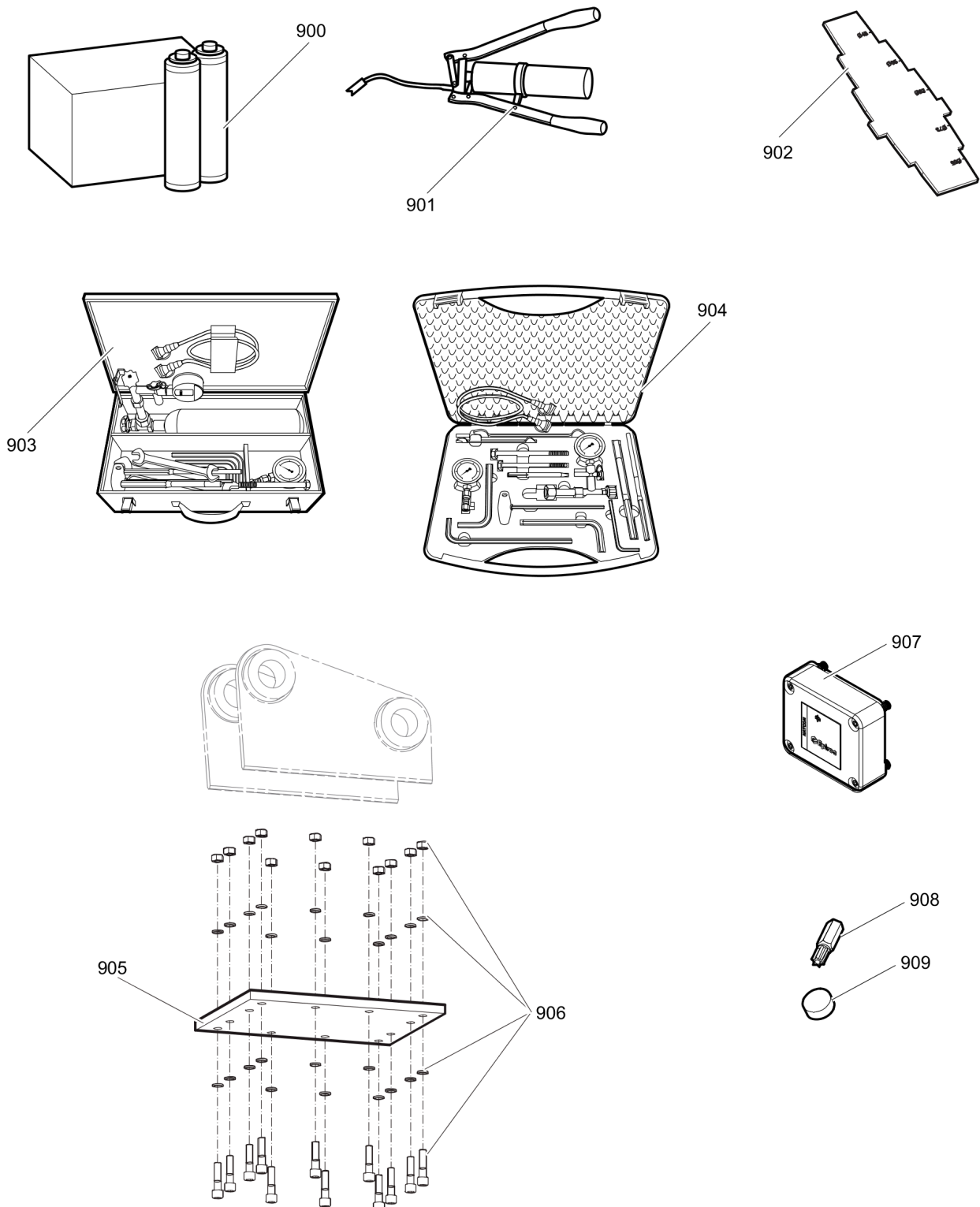
This page intentionally left blank

Options/accessories Hydraulic hose



Item	Part No.	Name	Qty	L
	-	STANDARD CONNECTION HOSES	1	
-	3363115423	HYDRAULIC HOSE, both ends 18 L (M26x1.5) length 1750 mm (68 in.)	1	
-	3363491002	HYDRAULIC HOSE, both ends 18 L (M26x1.5) length 1500 mm (59 in.)	1	
-	3363101424	HYDRAULIC HOSE, I.D. 16 mm (0.63 in.) 18 L (M26 x 1.5), length 2000 mm (78.74 in.)	1	
-	3363115425	HYDRAULIC HOSE, both ends 18 L (M26x1.5) length 2400 mm (95 in.)	1	
	-	Heavy duty connction hoses with spring protection	1	
-	3360995717	HYDRAULIC HOSE, both ends 18 L (M26 x 1.5) length 1500 mm (59 in.)	1	
-	3363115426	HYDRAULIC HOSE, both ends 18 L (M26x1.5) length 1750 mm (68 in.)	1	
-	3362235159	HYDRAULIC HOSE, both ends 18 L (M26 x 1.5) length 2000 mm (79 in.)	1	
-	3363083313	HYDRAULIC HOSE, both ends 18 L (M26 x 1.5) length 2400 mm (95 in.)	1	

Options/accessories Optional equipment

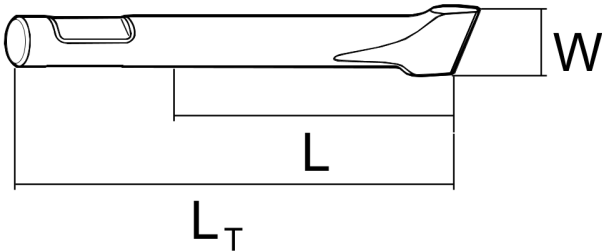
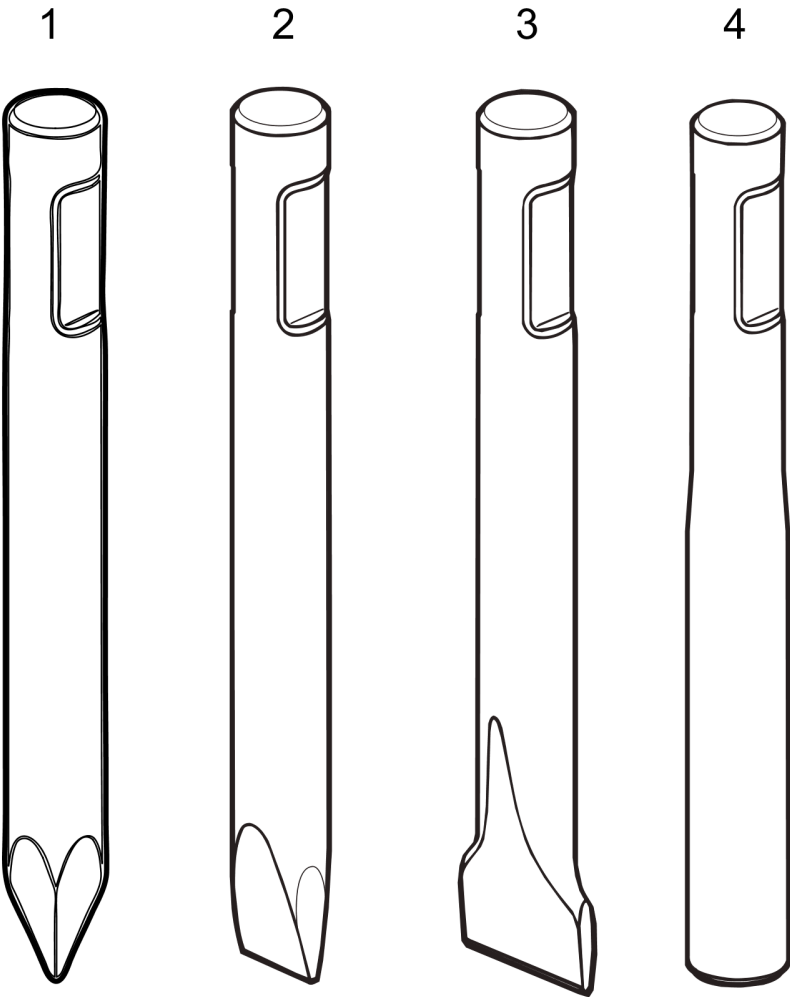


Refer to the DocMine web page for most up-to-date information. The printed information might be outdated.

Fri Jun 16 08:34:28 UTC 2023

Item	Part No.	Name	Qty	L
900	3363094913	CHISEL PASTE CARTRIDGE FOR GREASE GUN, 12 x 400 g (12 x 0.88 lbs)	1	
901	0909107100	LUBRICAT.GUN	1	
902	3315303700	TEST GAUGE WEAR BUSH	1	
903	3363089844	MAINTENANCE AND CHARGING BOX, with nitrogen cylinder 2 l (0.43 gal (0.53 US gal))	1	
904	3363094940	MAINTENANCE AND CHARGING BOX without nitrogen cylinder	1	
905	3363099701	BASE PLATE WITH THROUGH BORINGS	1	
906	3363106508	BOLT KIT	1	
907	3315442506	HATCON KIT EC (3G)	1	
907	3315442526	HATCON KIT EC (LTE)	1	
908	3315439105	SECURITY BIT HATCON	1	
909	3315439106	MAGNET HATCON	1	

Options/accessories Working tools



Item	Part No.	Name	Qty	L
1	3083342427	MOIL POINT		A
2	3083342428	CHISEL (cross)		B
3	3363130005	ASPHALT CUTTER (cross)		C
4	3083342426	BLUNT TOOL		D

Comments for Page: Working tools

A | L=390 mm, Lt=590 mm, Wt=12.5 kg

L=13.78 inch, Lt=23.23 inch, Wt=27.6 lb

B | W=62 mm, L=390 mm, Lt=590 mm, Wt=13 kg

W=2.44 inch, L=13.78 inch, Lt=23.23 inch, Wt=28.7 lb

C | W=140 mm, L=450 mm, Lt=650 mm, Wt=14.6 kg

W=5.51 inch, L=16.14 inch, Lt=25.59 inch, Wt=32.2 lb

D | L=390 mm, Lt=590 mm, Wt=13.1 kg

L=13.78 inch, Lt=23.23 inch, Wt=28.9 lb

Any unauthorized use or copying of the contents or any part thereof is prohibited.
This applies in particular to trademarks, model denominations, part numbers, and drawings.