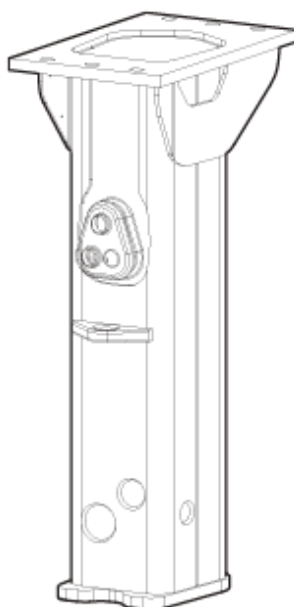


EC 50T

Spare parts list

Hydraulic breaker

EC 50T from s/n BES07136 - BES095541



General information

This spare parts list applies to the following:

Part number	Description
8460050097	EC 50T

Use only authorized parts. Any damage or malfunction caused by the use of unauthorized parts is not covered by Warranty or Product Liability.
Any unauthorized use or copying of the contents or any part thereof is prohibited. This applies in particular to trademarks, model denominations, part numbers, and drawings.

Instructions for use

This spare parts list contains no safety regulations and is merely intended to assist in the ordering of spare parts.

For information about operating, servicing, or repairing, the relevant Safety and operating instructions must be consulted at all costs.

Please observe the safety instructions listed in the relevant Safety and operating instructions!

Contents

Service, repair and wear part kits

Label kit	1
Seal kit	3

Mechanical

Percussion unit	5
Hydraulic breaker	7
Label	9
Tightening torque	11
Dimensions	13

Options/accessories

Optional equipment	14
Hydraulic hose	17
Working tools	19

Service, repair and wear part kits Label kit

NO EXPLODED VIEW
AVAILABLE
FOR THIS BOM

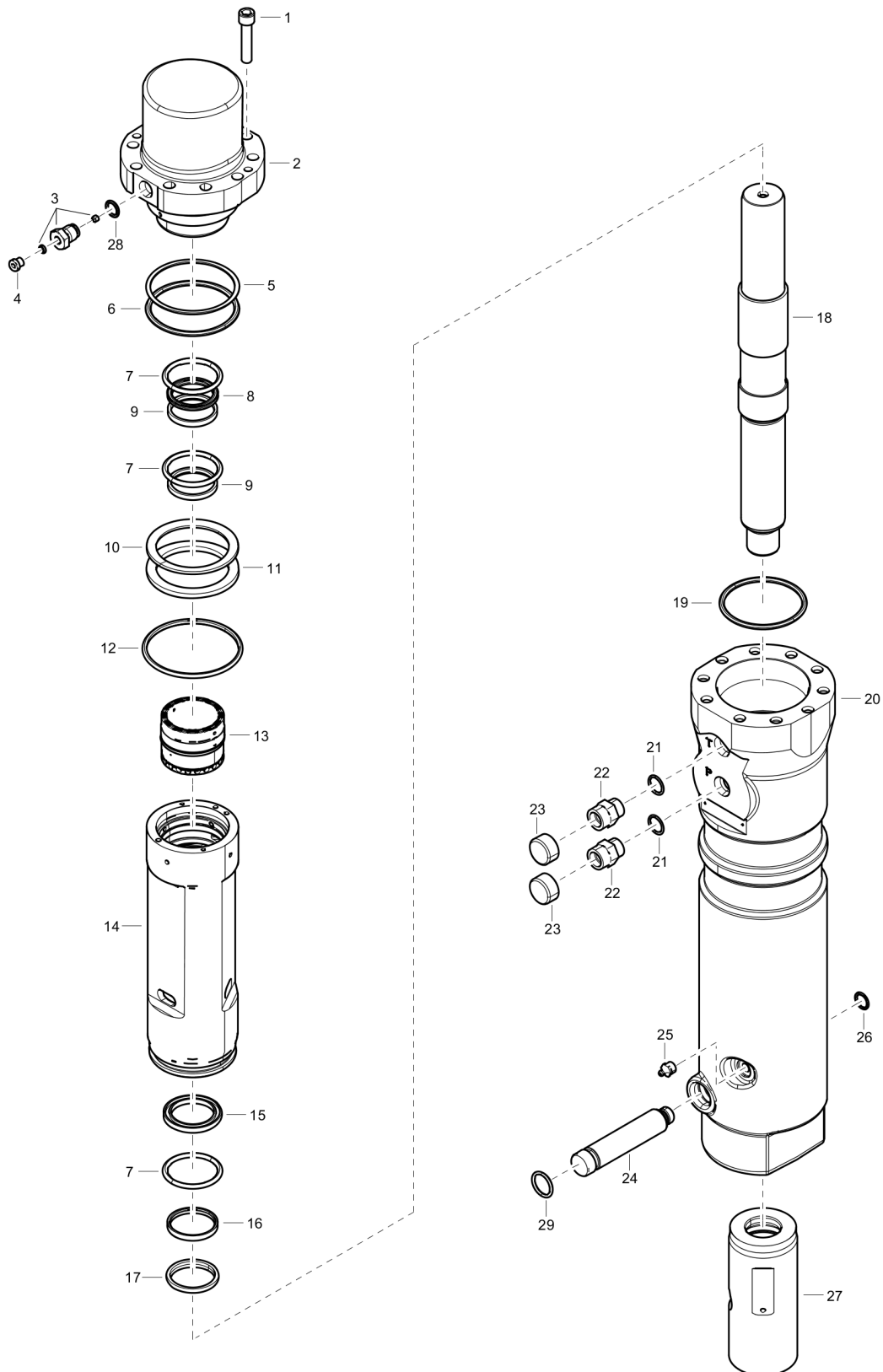
Item	Part No.	Name	Qty	L
1	3315387100	Label kit	1	
-	--	Safety label	1	
-	--	Safety label	1	
-	--	Grease label	1	

Service, repair and wear part kits Seal kit

NO EXPLODED VIEW
AVAILABLE
FOR THIS BOM

Item	Part No.	Name	Qty	L
1	3361120011	Seal kit	1	
-	--	O-ring	1	
-	--	Threaded plug	1	
-	--	Seal, 47 x 5.33 mm, 1.85 x 0.21 in.	1	
-	--	Seal	2	
-	--	O-ring, 56.52 x 5.33 mm, 2.23 x 0.21 in. (70 shore)	3	
-	--	O-ring, 69.22 x 5.33 mm , 2.73 x 0.21 in. (90 shore)	1	
-	--	Back-up ring, 70.31 x 4.65 mm , 2.77 x 0.18 in. (90 shore)	1	
-	--	O-ring, 94.62 x 5.33 mm , 3.72 x 0.21 in. (90 shore)	1	
-	--	Back-up ring, 94.83 x 4.65 mm , 3.73 x 0.18 in. (90 shore)	1	
-	--	Seal, Ø 104 mm, Ø 4.09 in	1	
-	--	O-ring, 88.25 x 5.33 mm , 3.47 x 0.21 in. (90 shore)	1	
-	--	Seal, 50 x 65.5 x 6 mm, 1.97 x 2.58 x 0.24 in.	1	
-	--	Seal	1	
-	--	Retainer	1	
-	--	O-ring, 19.18 x 2.46 mm , 0.76 x 0.10 in. (70 shore)	2	

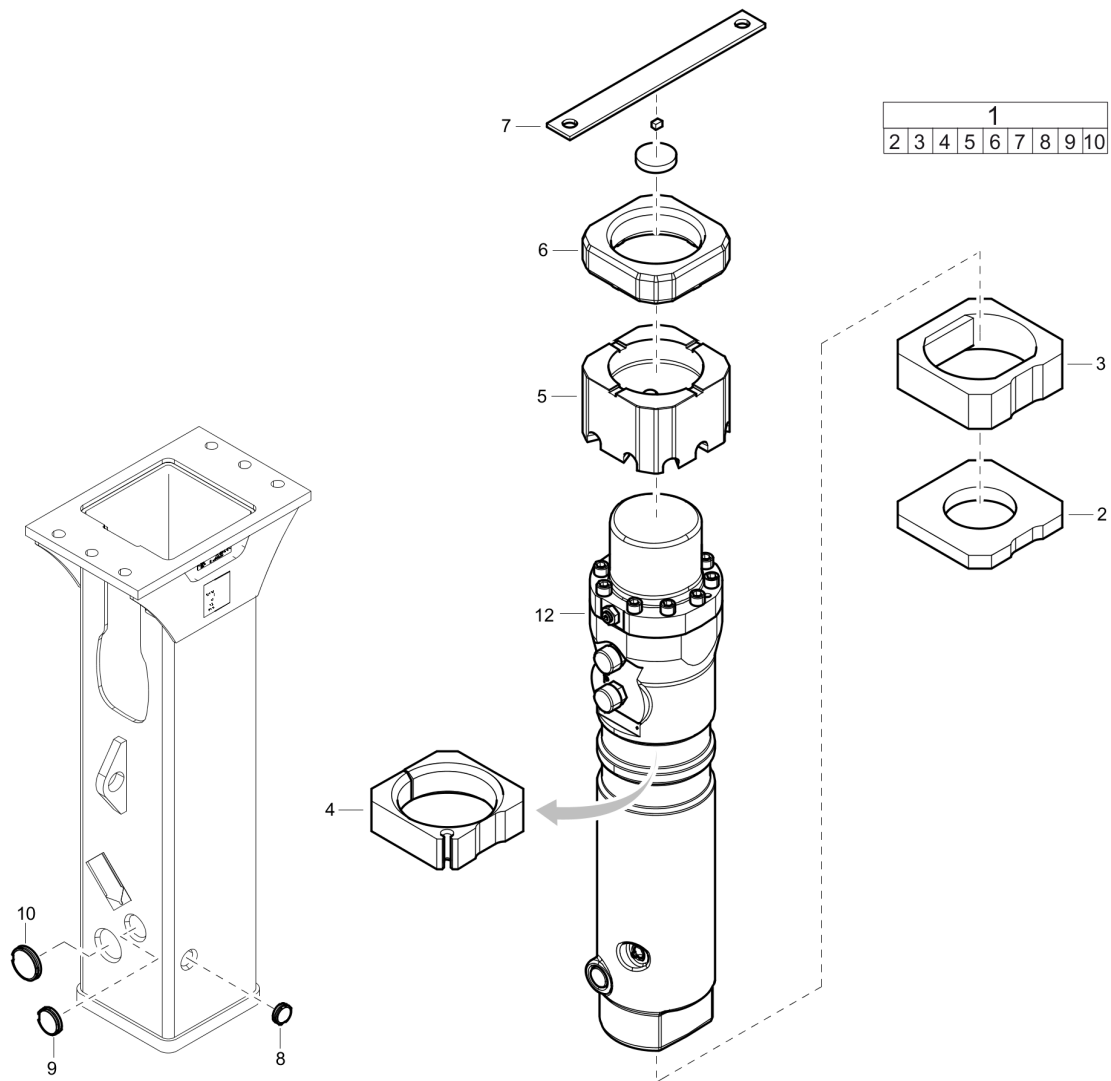
Mechanical Percussion unit



Refer to the Parts Online web page for most up-to-date information. The printed information might be outdated.

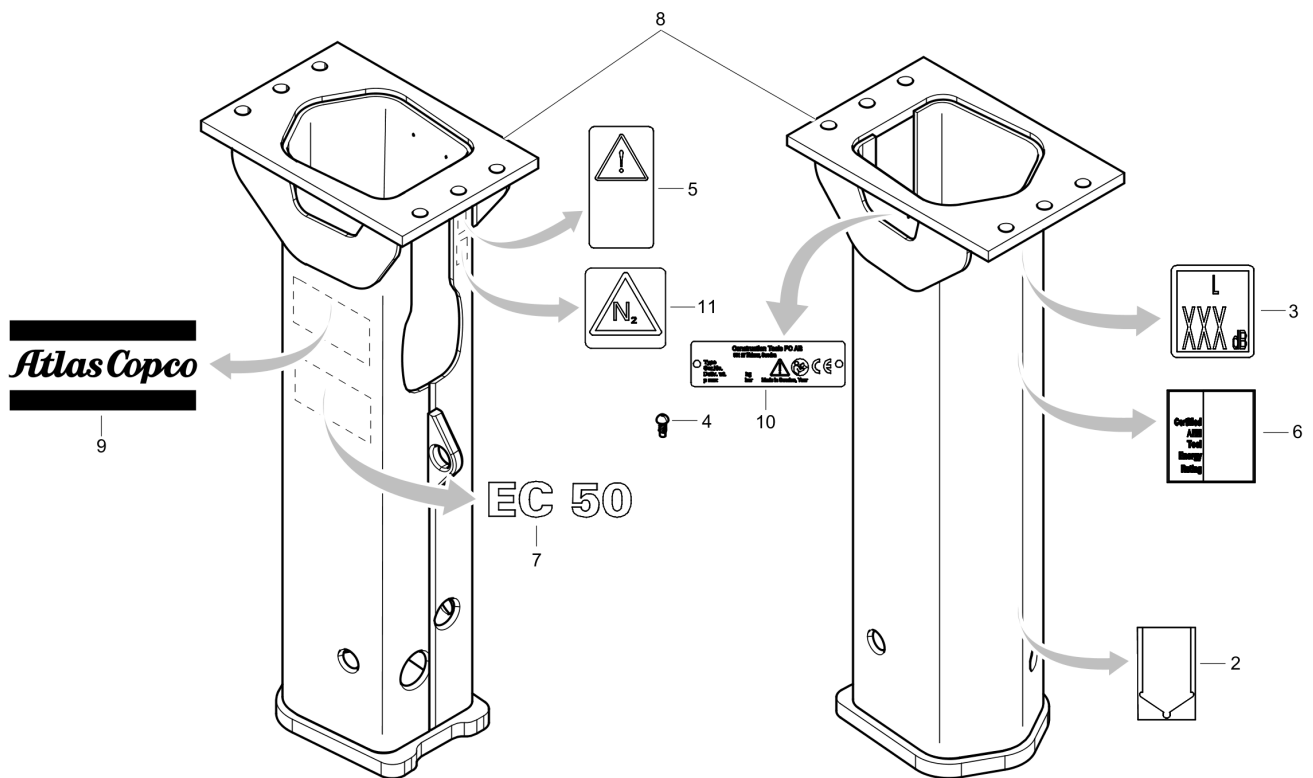
Item	Part No.	Name	Qty	L
-	3315429780	Percussion unit	1	
1	3315431100	MC6S M12x55 8.8 g627	10	
2	3315429600	Backhead	1	
3	3363087286	Filling valve complete	1	
4	3360478426	Threaded plug	1	
28	0663925100	O-ring, 15.08x2.62	1	
5	3361192021	Backup ring, 95	1	
6	3361192020	O-ring, 94.62x5.33	1	
7	3361192044	O-ring, 56.25x5.33	3	
8	3361192042	Quadring	1	
9	3361192043	Stepseal	2	
10	3361120004	Plate spring	1	
11	3361120005	Spacer	1	
12	3315296610	Sealing	1	
13	3361120106	Control valve	1	
14	3361120002	Cylinder body	1	
15	3361192049	Sealing	1	
16	3361192050	Stepseal	1	
17	3361192051	Wiper	1	
18	3315332600	Piston	1	
19	3361192047	O-ring, 88.25x5.33	1	
20	3315429700	Cylinder housing	1	
21	3361192067	O-ring	2	
22	3361031476	Nipple	2	
23	3361353486	Cap	2	
24	3315429800	Retainer	1	
25	0544215300	Grease nipple, ISO 7-R 1/4	1	
26	3361192066	O-ring, 16.36x2.21	1	
27	3361120009	Wear bushing	1	
29	0663212111	O-RING 22X3,5	1	

Mechanical Hydraulic breaker

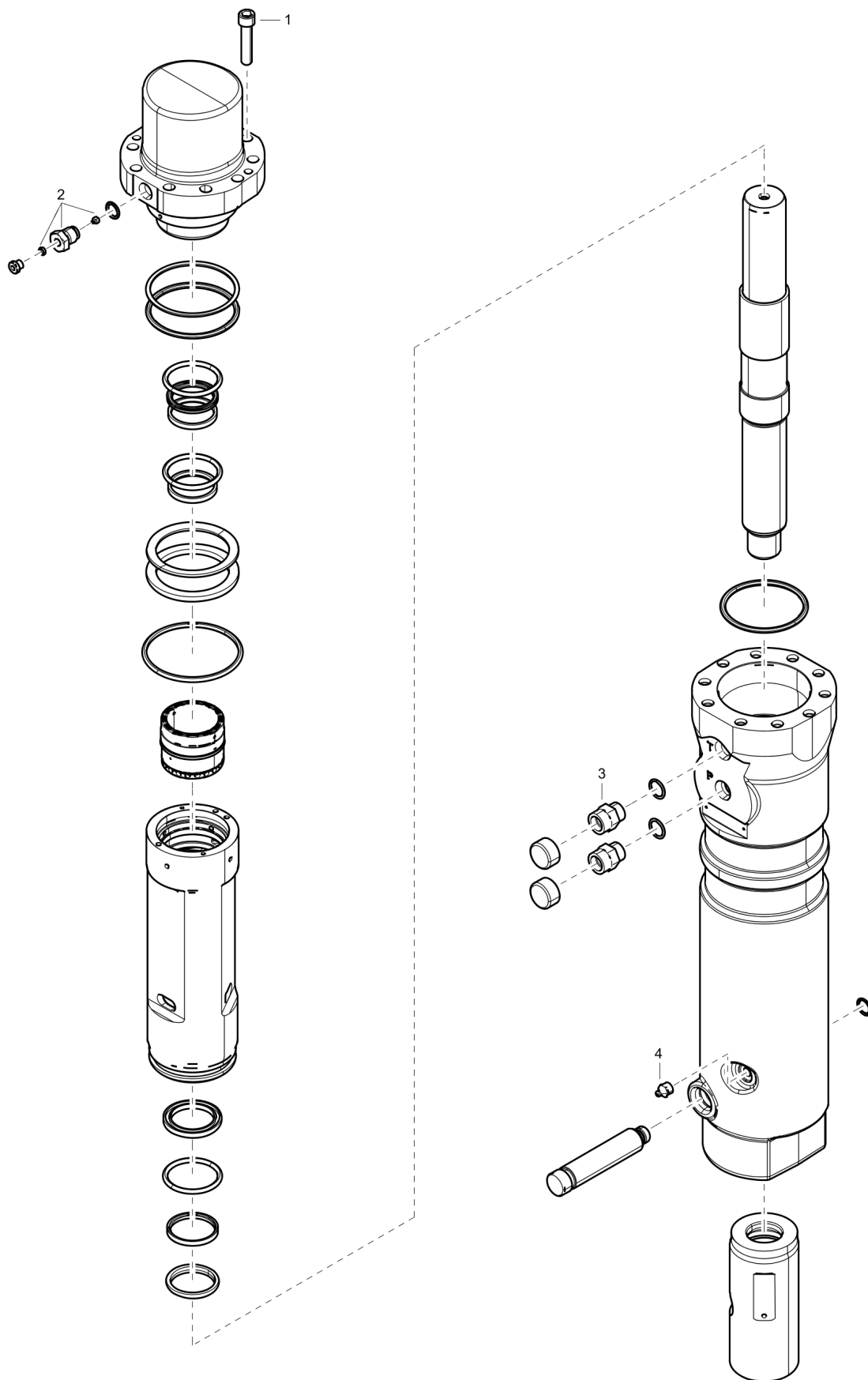


Item	Part No.	Name	Qty	L
1	3315432810	Hydraulic breaker EC50T	1	
2	3315288500	Shock absorber	1	
3	3315288600	Guide plate	1	
4	3315288700	Guide plate	2	
5	3315431700	Spacer	1	
6	3315431600	Shock absorber	1	
7	3362491017	Retainer	1	
8	3362491015	Plug	2	
9	3362491014	Plug	1	
10	3362491013	Plug	2	
12	3315429785	Painting instruction	1	

Mechanical Label

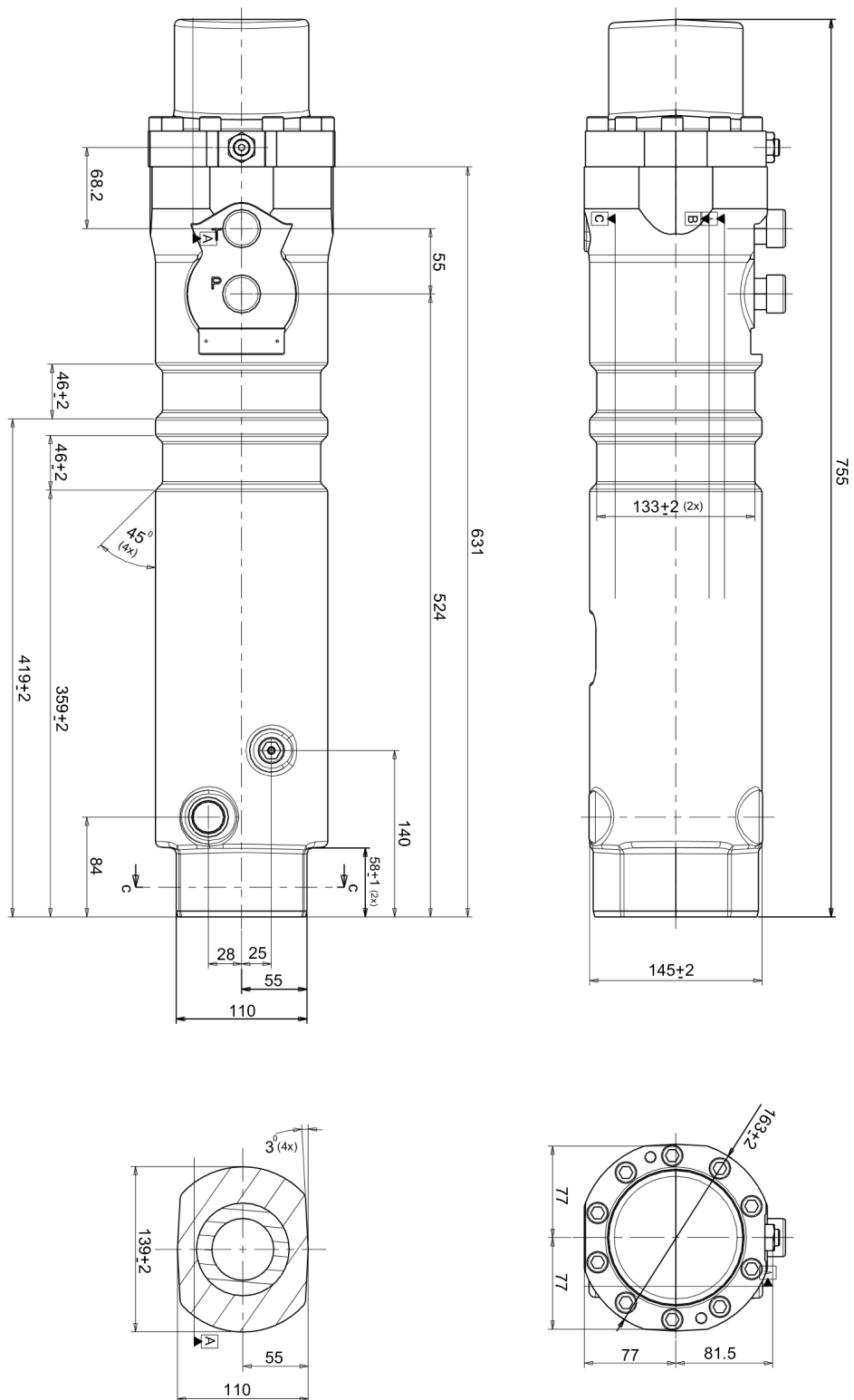


Item	Part No.	Name	Qty	L
1	3315422600	Painting and labeling	1	
2	3360995411	Label - Lubricating symbol	1	
3	-	Sound power label	1	
4	0244414400	Drive screw, 2.5x6	2	
5	3115262900	Safety label	1	
6	3315254600	AEM sign	1	
7	3315423000	EC 50 label	2	
8	3315286900	Hammer box	1	
9	3315294200	Product label "Atlas Copco"	2	
10	-	Data plate (Not available separately)	1	
11	3115263000	Safety label	1	

Mechanical Tightening torque

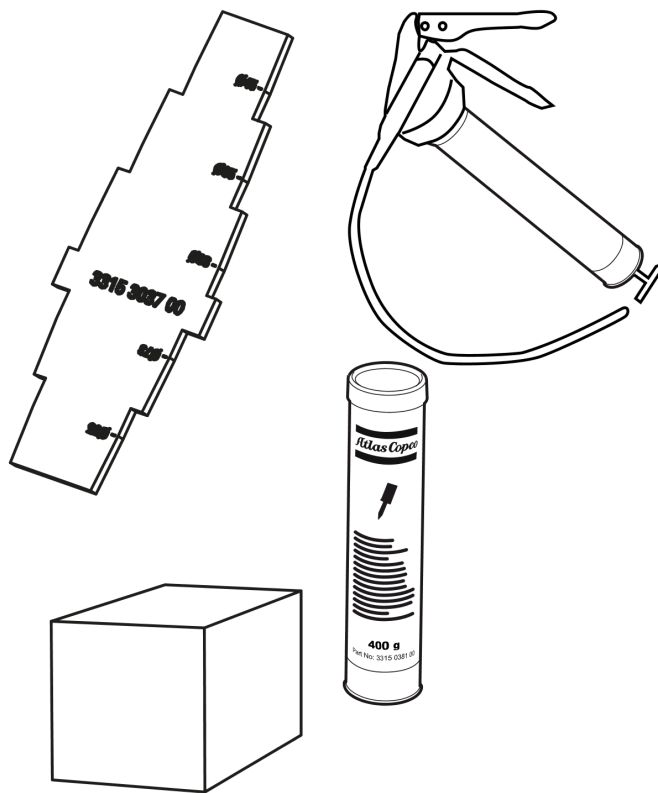
Refer to the Parts Online web page for most up-to-date information. The printed information might be outdated.

Item	Part No.	Name	Qty	L
1	-	Bolt, in production with new - 65 Nm	-	A
1	-	Bolt, in service with molycote- 78 Nm	-	
2	-	Filling valve- 130 Nm	-	
3	-	Nipple- 90 Nm	-	
4	-	Lubrication nipple- 20 Nm	-	

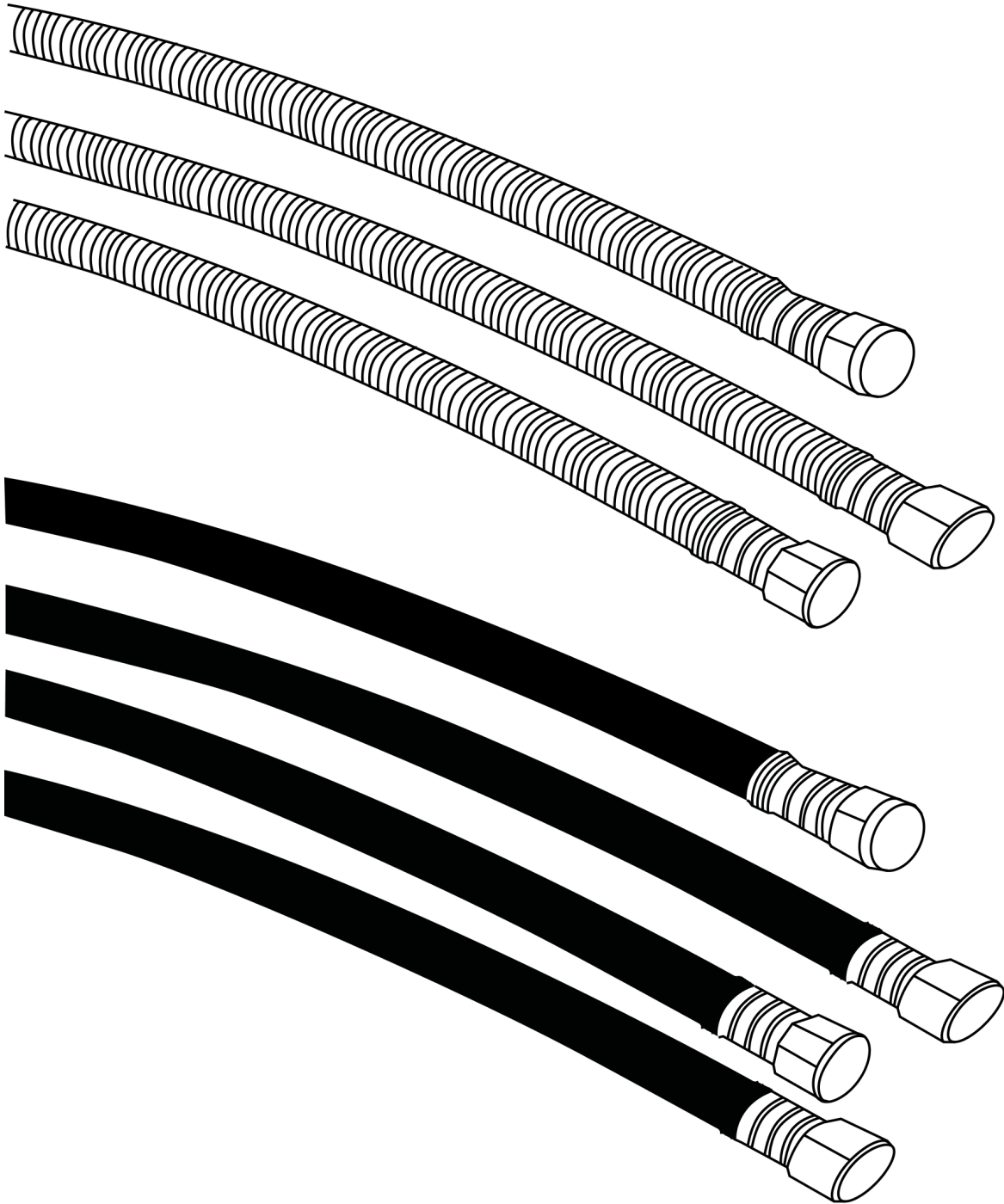
Mechanical Dimensions

Refer to the Parts Online web page for most up-to-date information. The printed information might be outdated.

This page intentionally left blank

Options/accessories Optional equipment

Item	Part No.	Name	Qty	L
1	3363094913	Chisel paste cartridge for grease gun, 12 x 400 g (0.88 lbs)	1	
2	0909107100	Grease gun for 400 g cartridge	1	
3	3315303700	Test gauge wear bush	1	
4	3363089844	Service box with nitrogen cylinder, 2 l, 0.43 gal (0.53 US gal)	1	
5	3363094940	Service box without nitrogen cylinder	1	
6	3362269303	Base plate	1	
7	3363106507	Bolt kit	1	

Options/accessories Hydraulic hose

Item	Part No.	Name	Qty	L
1	-	Standard connection hoses	1	
2	3363115420	Hydraulic hose, I.D. 12 (0.47"), both ends M 22 x 1.5, conical seal 24°, length 1500 mm (59.05 in.)	2	A
3	3363491001	Hydraulic hose, I.D. 12 (0.47"), both ends M22 x 1.5, conical seal 24°, length 1750 mm (69 in.)	2	B
4	3363101421	Hydraulic hose, I.D. 12 (0.47"), both ends M 22 x 1.5, conical seal 24°, length 2100 mm (82.68 in.)	2	C
5	-	Heavy duty connction hoses with spring protection	1	
6	3363115422	Hydraulic hose, I.D. 12 (0.47"), both ends M 22 x 1.5, conical seal 24°, length 1500 mm (59.05 in.)	2	D
7	3363353551	Hose	2	E
8	3363085946	Hydraulic hose, I.D. 12 (0.47"), both ends M22 x 1.5, conical seal 24°, length 2100 mm (83 in.)	2	F

Comments for Page: Hydraulic hose

A | 15 L, (M 22 x 1.5), length 1500 mm (59 in.)

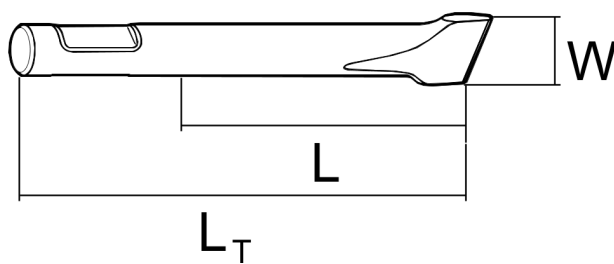
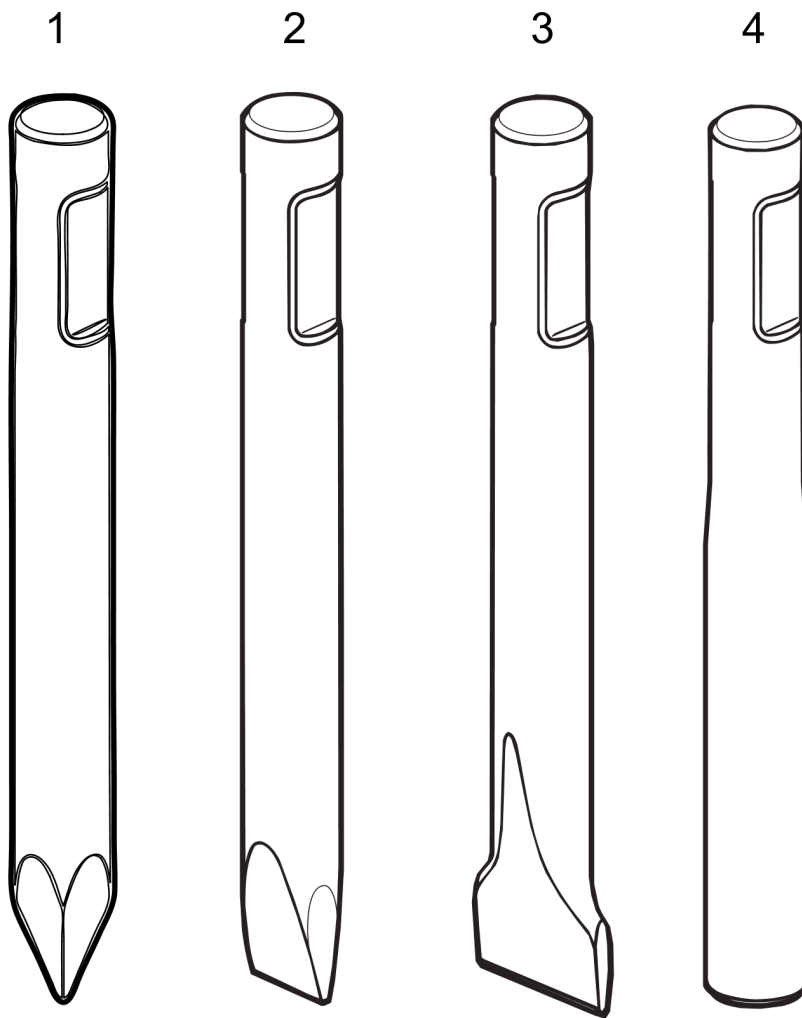
B | 15 L, (M 22 x 1.5), length 1750 mm (69 in.)

C | 15 L, (M 22 x 1.5), length 2100 mm (83 in.)

D | 15 L, (M 22 x 1.5), length 1500 mm (59 in.)

E | 15 L, (M 22 x 1.5), length 1750 mm (69 in.)

F | 15 L, (M 22 x 1.5), length 2100 mm (83 in.)

Options/accessories Working tools

Item	Part No.	Name	Qty	L
1	3363120001	Moil point		A
2	3363120002	Chisel (cross)		B
3	3363120005	Asphalt cutter (cross)		C
4	3363120003	Blunt tool		D

Comments for Page: Working tools

A | L=320 mm, Lt=530 mm, Wt=7.9 kg

L=12.6 inch, Lt=20.87 inch, Wt=17.4 lb

B | W=52 mm, L=320 mm, Lt=530 mm, Wt=8.3 kg

W=2.05 inch, L=12.6 inch, Lt=20.87 inch, Wt=18.3 lb

C | W=120 mm, L=370 mm, Lt=500 mm, Wt=9.7 kg

W=4.72 inch, L=14.57 inch, Lt=19.7 inch, Wt=21.4 lb

D | L=320 mm, Lt=530 mm, Wt=8.6 kg

L=12.60 inch, Lt=20.87 inch, Wt=19.0 lb

Any unauthorized use or copying of the contents or any part thereof is prohibited.
This applies in particular to trademarks, model denominations, part numbers, and
drawings.

