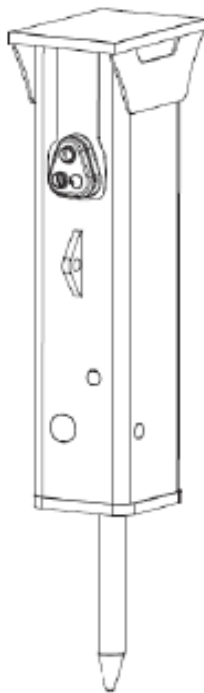


EC 50T

Spare parts list

Hydraulic breakers

EC 50T s/n BES140218 –



General information

This spare parts list applies to the following:

Part number	Description
8460050097	EC 50T
8460050111	EC 50T
8460050136	EC 50T HATCON
8460050141	EC 50T
8460050143	EC 50T HATCON LTE

Use only authorized parts. Any damage or malfunction caused by the use of unauthorized parts is not covered by Warranty or Product Liability. Any unauthorized use or copying of the contents or any part thereof is prohibited. This applies in particular to trademarks, model denominations, part numbers, and drawings.

Instructions for use

This spare parts list contains no safety regulations and is merely intended to assist in the ordering of spare parts.

For information about operating, servicing, or repairing, the relevant Safety and operating instructions must be consulted at all costs.

Please observe the safety instructions listed in the relevant Safety and operating instructions!

Service, repair and wear part kits

Label kit	1
Seal kit	3

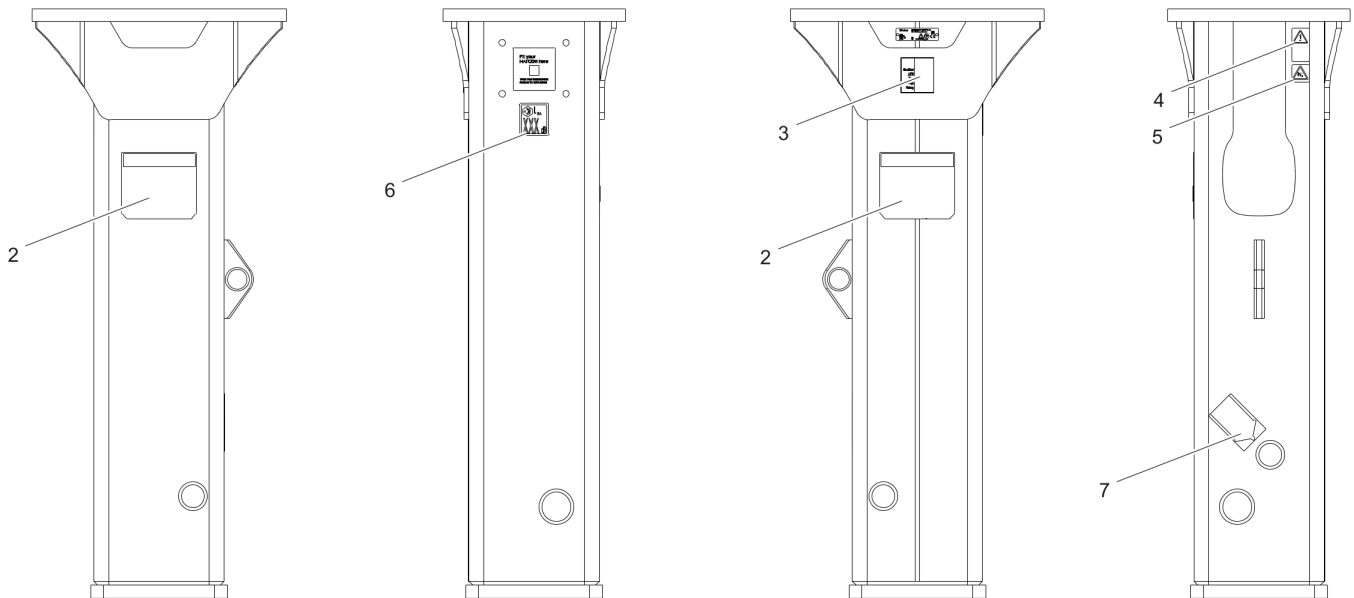
Mechanical

Hydraulic breaker	5
Percussion unit	7
HATCON (Horizontal)	9
Tightening torque	11
Assembly instruction	13
Dimensions	14

Options/accessories

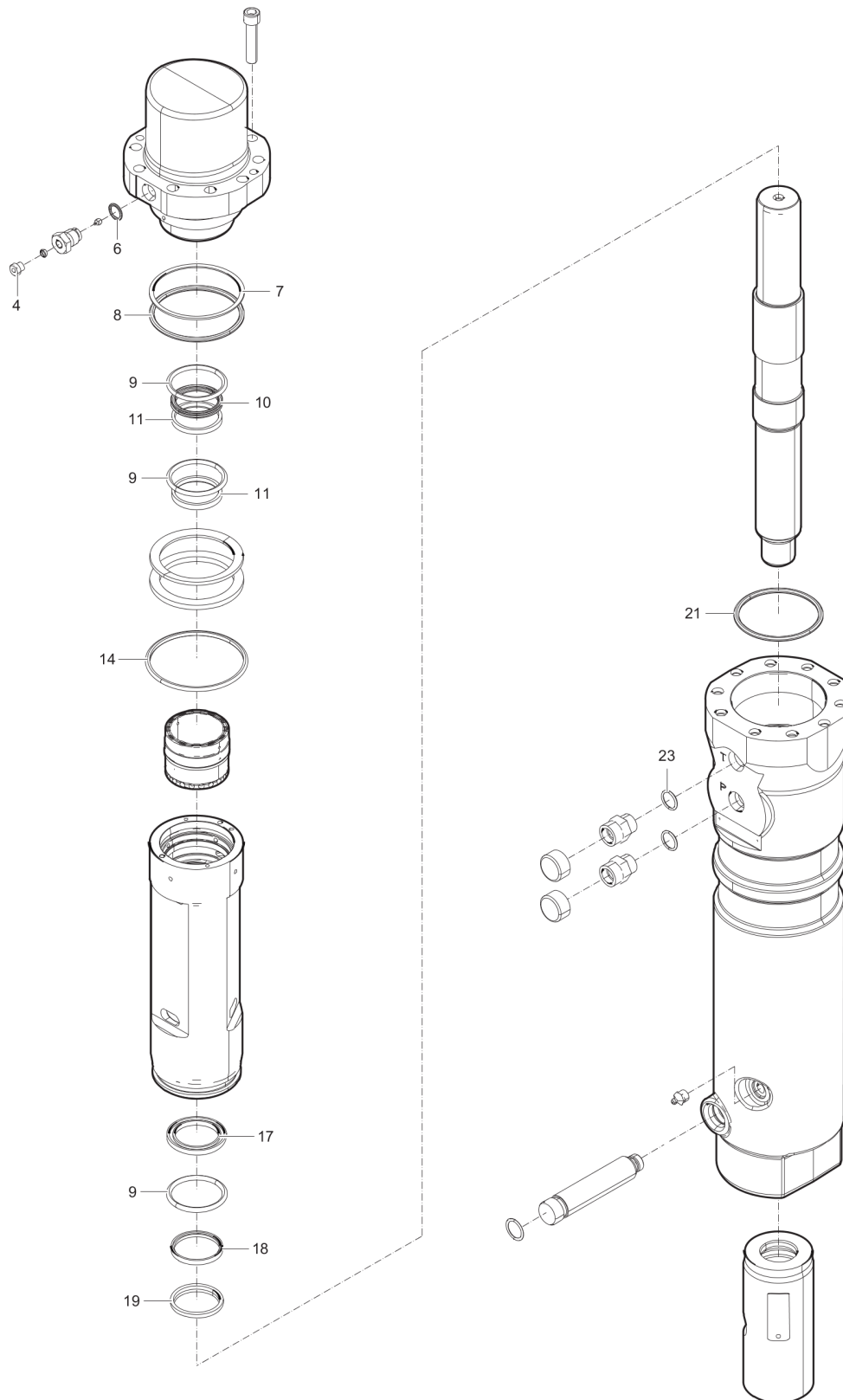
Hydraulic hose	16
Optional equipment	19
Working tools	21

Service, repair and wear part kits Label kit



Item	Part No.	Name	Qty	L
1	3382070014	LABEL KIT	1	
2		PRODUCT LABEL	2	
3		AEM SIGN	1	
4		SAFETY LABEL	1	
5		SAFETY LABEL	1	
6		SOUND POWER LABEL	1	
7		LABEL - LUBRICATING SYMBOL	1	

Service, repair and wear part kits Seal kit



Refer to the DocMine web page for most up-to-date information. The printed information might be outdated.

Mon Feb 19 05:12:55 UTC 2024

Item	Part No.	Name	Qty	L
KIT	3361120011	SEAL KIT	1	
4	3360478426	THREADED PLUG	1	
6	0663925100	O-RING	1	
7	0661150126	BACK-UP RING	1	A
8	3361192020	O-RING	1	B
9	3361192044	O-RING	3	C
10	3361192042	SEAL	1	
11	3361192043	STEPSEAL	2	
14	3315296610	SEAL	1	
17	3361192049	SEAL	1	D
18	3361192050	STEPSEAL	1	
19	3361192051	WIPER	1	
21	3361192047	O-RING	1	E
23	3361192067	O-RING	2	F
-	3361192045	O-RING	1	
-	3361192046	BACK-UP RING	1	G

Comments for Page: Seal kit

A | Ø 92.66 x 4.65 x 1.52 mm (Ø 3.65 x 0.18 x 0.06 in.) 90 Shore

Replaces 3361192021 , valid from BES102089

B | 94.62 x 5.33 mm (3.72 x 0.21 in.) 90 shore

C | 56.52 x 5.33 mm (2.23 x 0.21 in.)

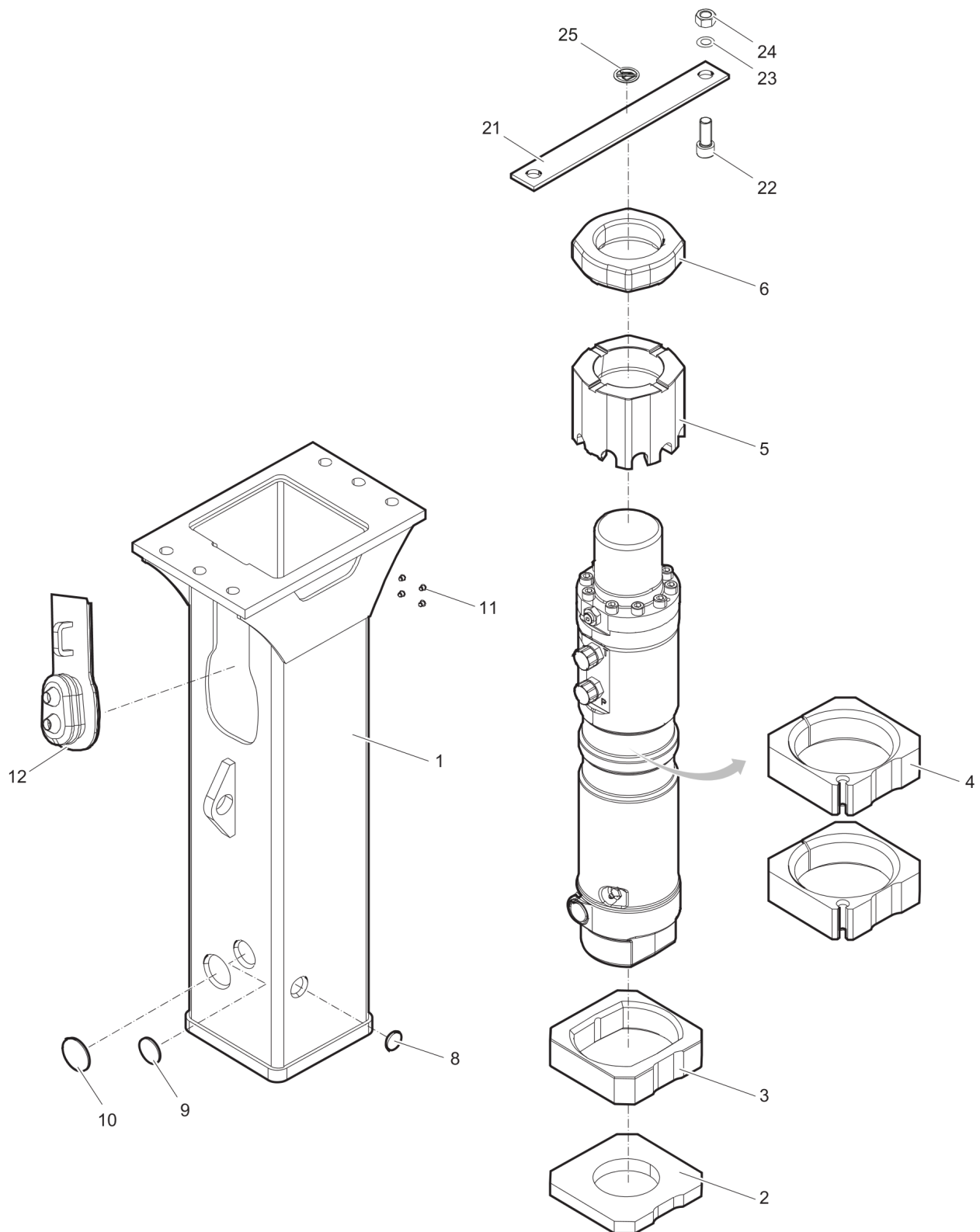
D | 50 x 65.5 x 6 mm (1.97 x 2.58 x 0.24 in.)

E | 88.25 x 5.33 mm (3.47 x 0.21 in.)

F | 19.18 x 2.46 mm (0.76 x 0.10 in.) 70 shore

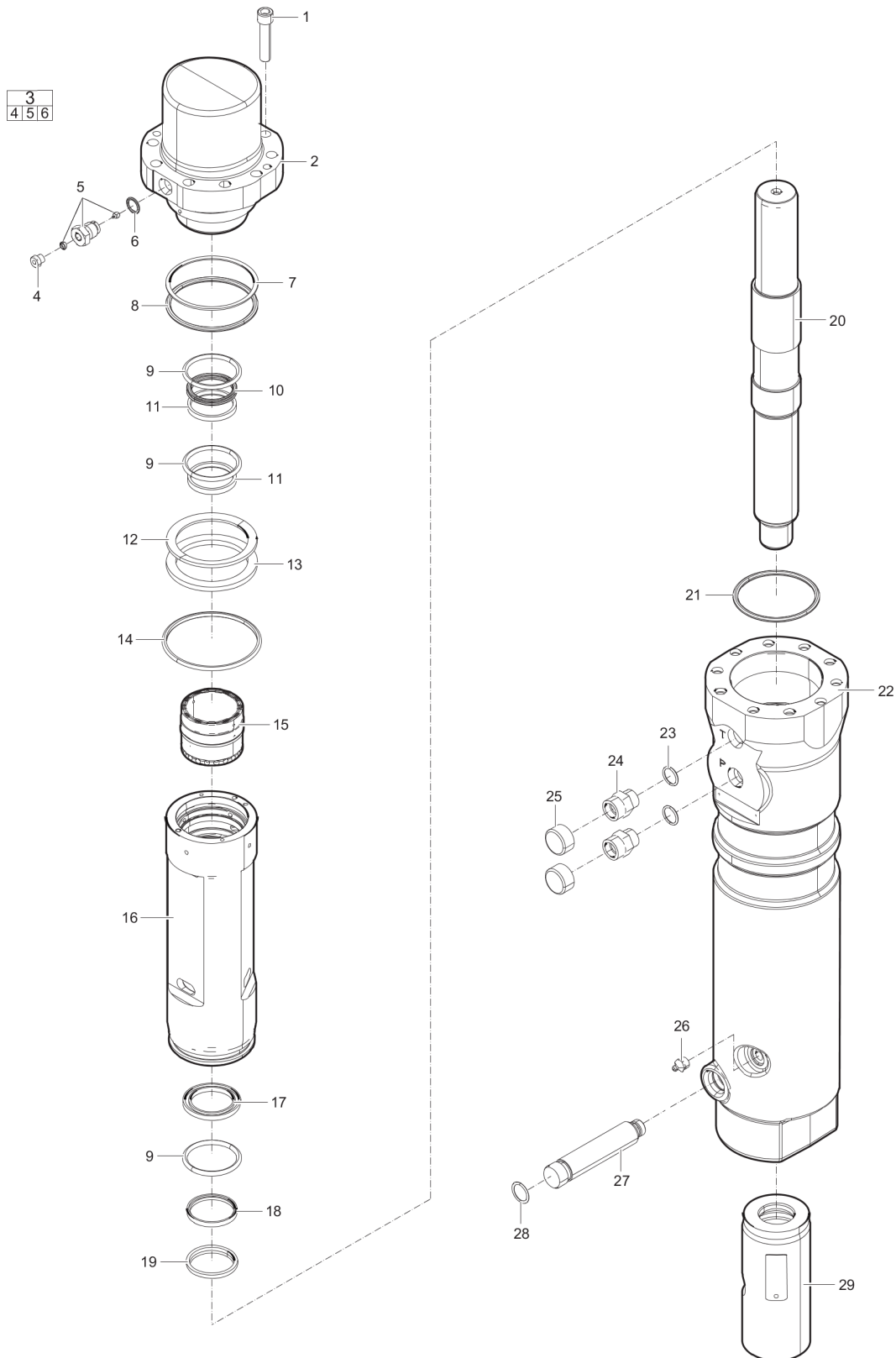
G | 70.31 x 4.65 mm (2.77 x 0.18 in.) 90 Shore

Mechanical Hydraulic breaker



Item	Part No.	Name	Qty	L
1	3362120002	BREAKER BOX	1	
2	3362420001	SHOCK ABSORBER	1	
3	3315288620	LOWER GUIDE PLATE	1	
4	3362420003	UPPER GUIDE PLATE	2	
5	3315431700	SPACER	1	
6	3315431600	SHOCK ABSORBER	1	
8	3362491015	PLUG	2	
9	3362491014	PLUG	2	
10	3362491013	PLUG	2	
11	3315439145	PROTECTIVE PLUG HATCON	4	
12	3362491009	COVER	1	
21	3362491017	TRANSPORT SAFETY DEVICE	1	
22	3360026644	ALLEN SCREW	2	
23	3361333703	PAIR OF LOCK WASHERS	2	
24	3360103270	NUT	2	
25	3363091872	LABEL TRANSPORT SAFETY DEVICE	1	

Mechanical Percussion unit

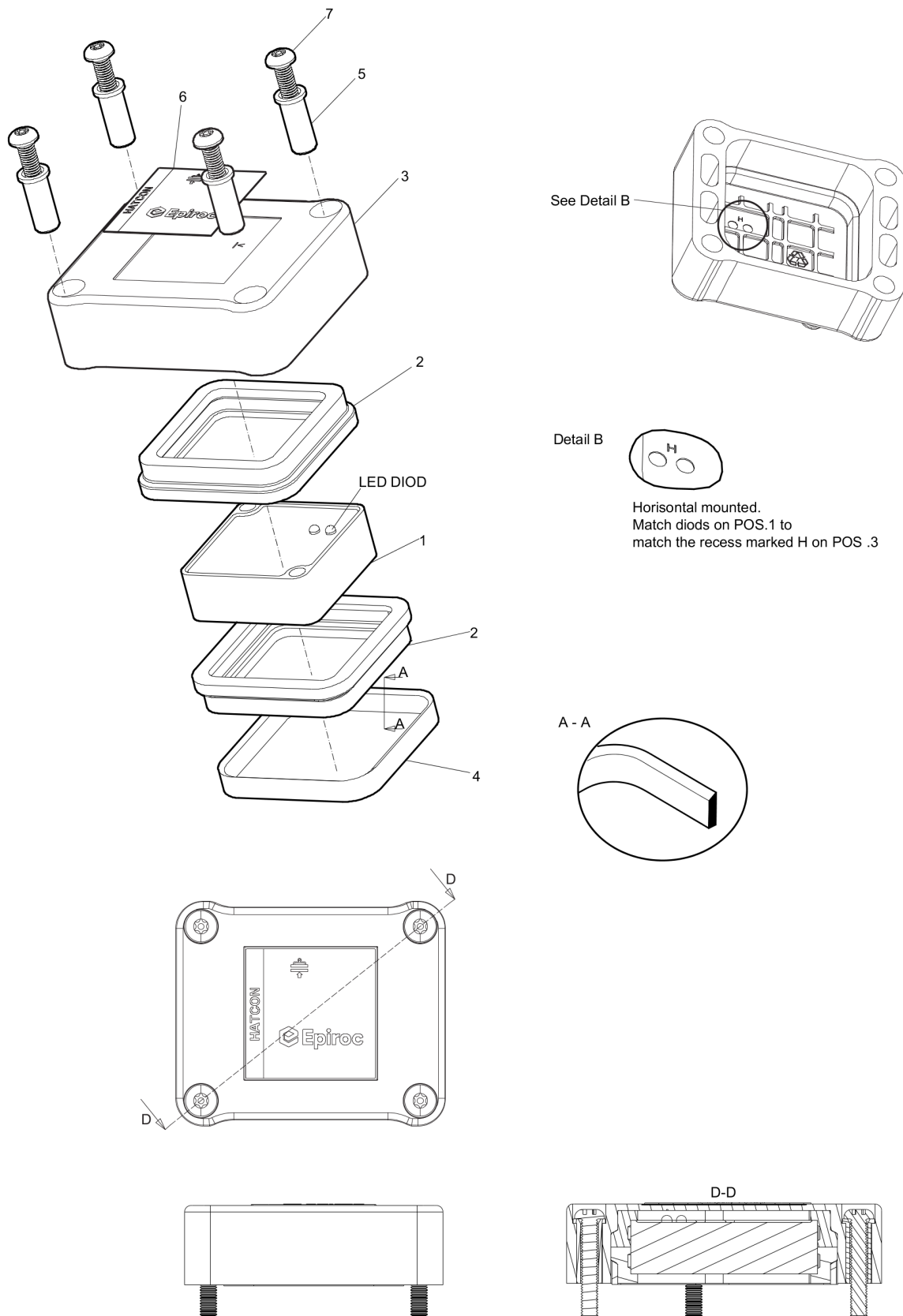


Refer to the DocMine web page for most up-to-date information. The printed information might be outdated.

Mon Feb 19 05:12:57 UTC 2024

Item	Part No.	Name	Qty	L
1	3315431100	SCREW	10	
2	3315429600	BACK HEAD	1	
3	3363087286	FILLING VALVE, complete	1	
4	3360478426	THREADED PLUG	1	
5		FILLING VALVE	1	
6	0663925100	O-RING	1	
7	0661150126	BACK-UP RING	1	
8	3361192020	O-RING	1	
9	3361192044	O-RING	3	
10	3361192042	SEAL	1	
11	3361192043	STEPSEAL	2	
12	3361120004	PLATE SPRING	1	
13	3361120005	SPACER	1	
14	3315296610	SEAL	1	
15	3361120106	CONTROL VALVE	1	
16	3361120002	CYLINDER BUSH	1	
17	3361192049	SEAL	1	
18	3361192050	STEPSEAL	1	
19	3361192051	WIPER	1	
20	3315332630	PISTON	1	
21	3361192047	O-RING	1	
22	3315429705	CYLINDER HOUSING	1	
23	3361192067	O-RING	2	
24	3361031476	FITTING	2	
25	3361353486	CAP	2	
26	3360433774	GREASE NIPPLE	1	
27	3315429811	TOOL RETAINER	1	
28	0663212111	O-RING	1	
29	3361120009	WEAR BUSH	1	

Mechanical HATCON (Horizontal)

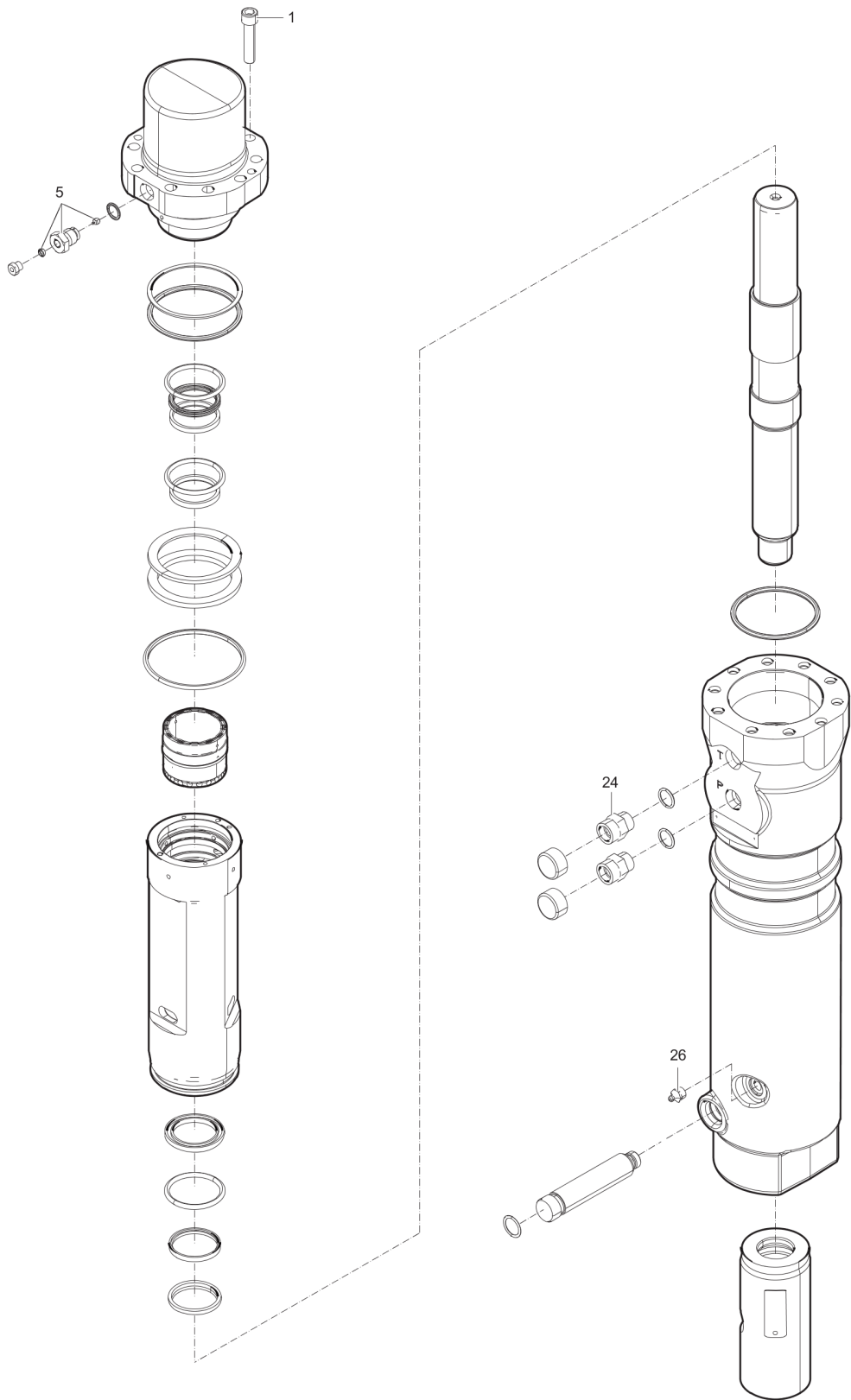


Refer to the DocMine web page for most up-to-date information. The printed information might be outdated.

Mon Feb 19 05:12:57 UTC 2024

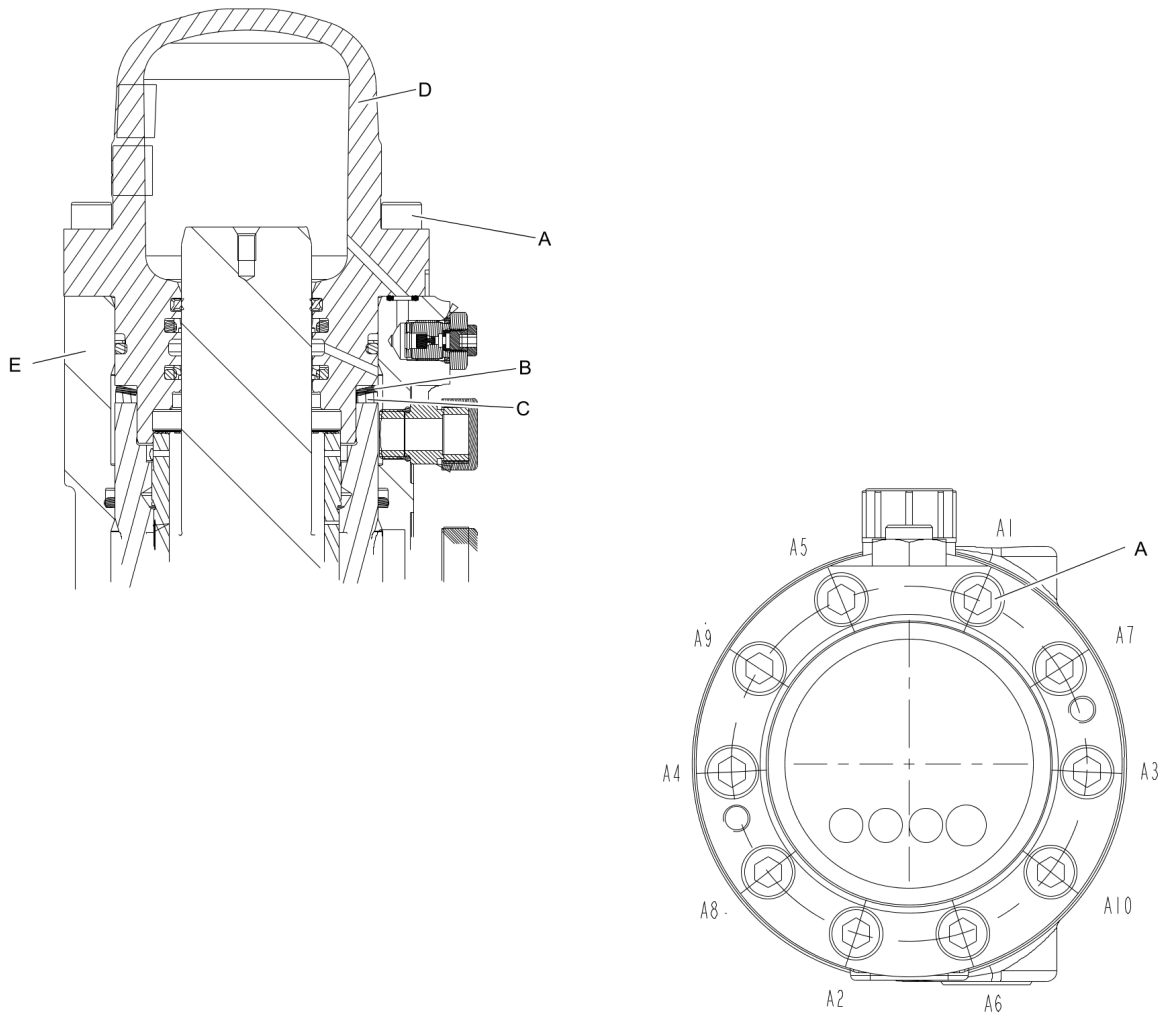
Item	Part No.	Name	Qty	L
1		TRACKING MODULE HATCON	1	
2	3315439130	DAMPER HATCON	2	
3	3315439110	HOUSING TYPE 1 HATCON	1	
4	3315439140	LOCK RING HATCON	1	
5	3315439120	SLEEVE HATCON	4	
6	3315439100	PRODUCT LABEL HATCON	1	
7	3315442610	SCREW HATCON	4	

Mechanical Tightening torque



Item	Part No.	Name	Qty	L
1	-	ALLEN SCREW, in production with new - 65 Nm (48 ft lbf)	-	
1	-	ALLEN SCREW, in service with molycote - 78 Nm (58 ft lbf)	-	
5	-	FILLING VALVE - 130 Nm (96 ft lbf)	-	
24	-	FITTING - 90 Nm (66 ft lbf)	-	
26	-	GREASE NIPPLE - 20 Nm (15 ft lbf)	-	

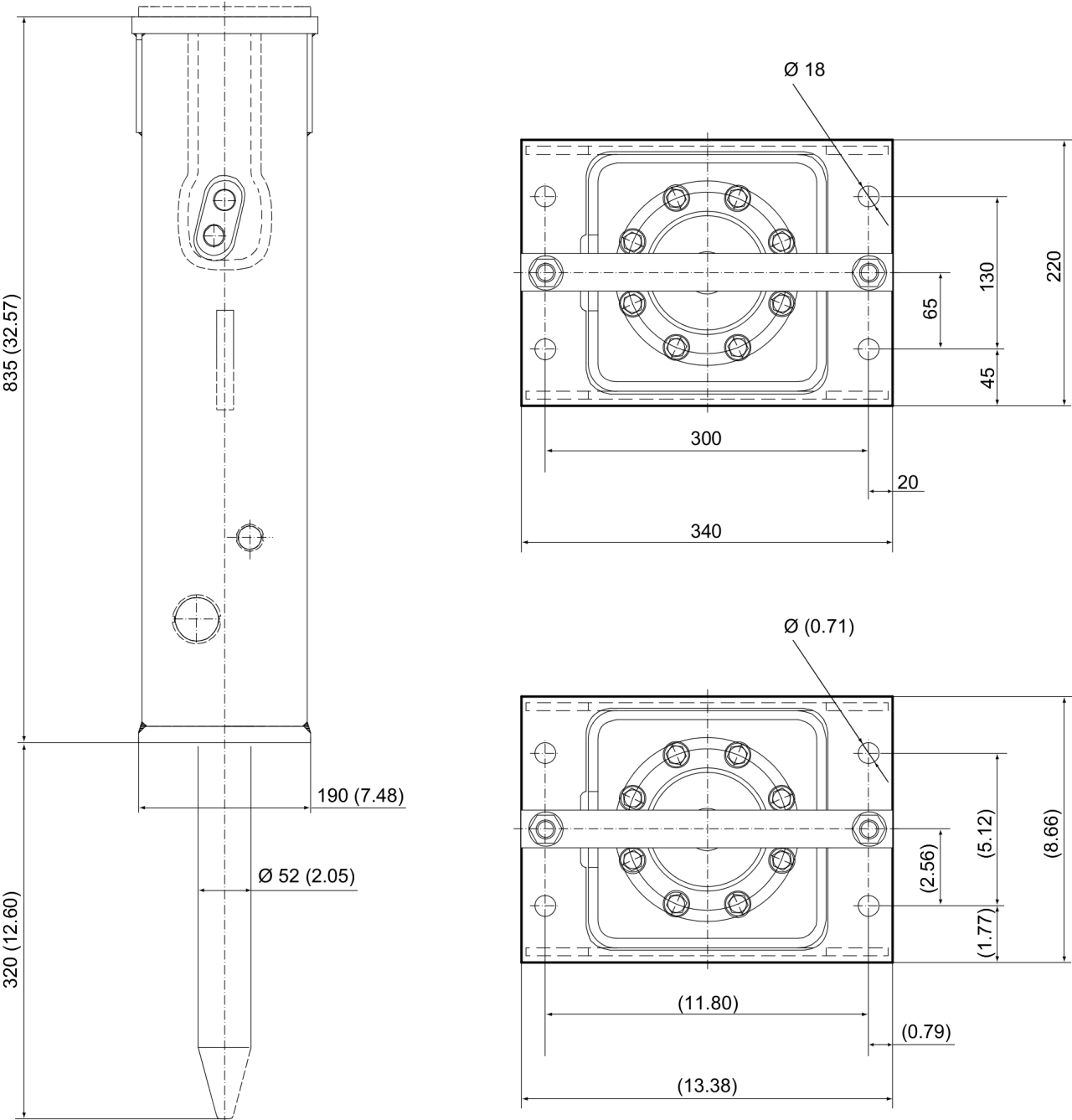
Mechanical Assembly instruction



1. Make sure the spring plate (B) and spacer (C) are centered before mounting the back head (D).
2. Press the back head (D) down on the spring plate (B) and spacer (C).
3. Grease the screws (A) with Molykote® 1000 (Molykote is a registered trademark of Dow Corning Corporation), and manually fit them on the back head (D)
4. Torque the screws (A) in the order from A1 to A10 in one step.

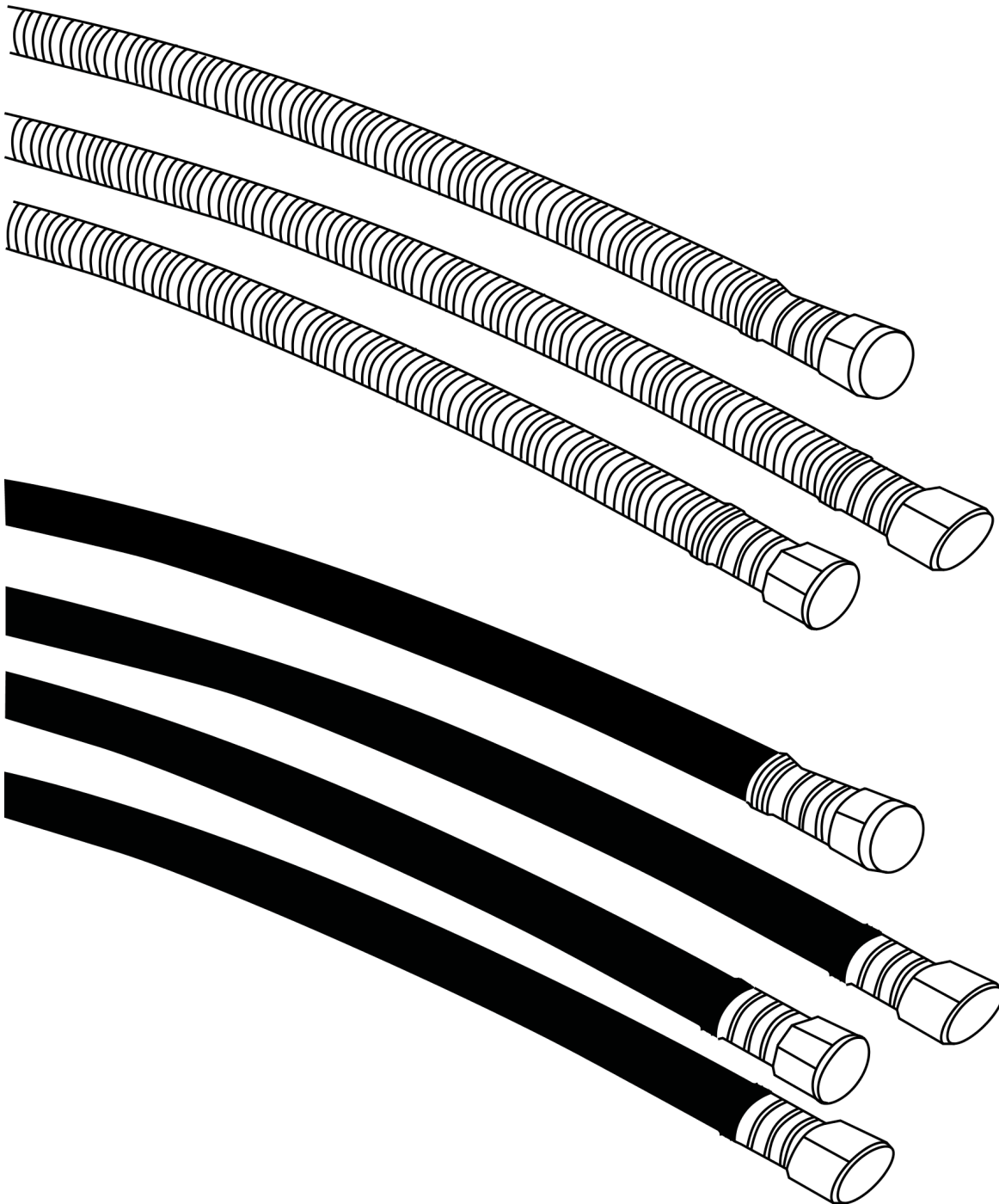
This page intentionally left blank

Mechanical Dimensions



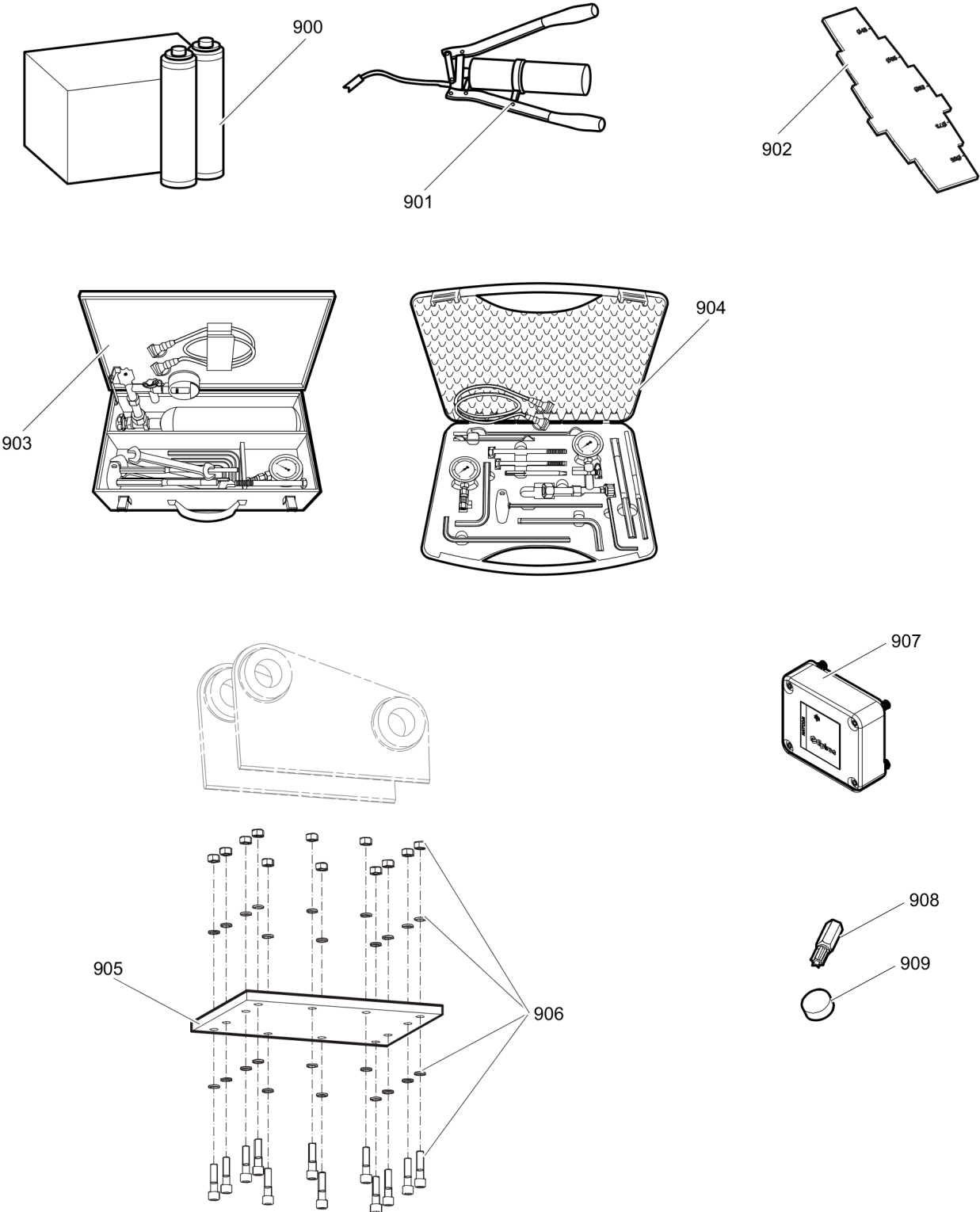
This page intentionally left blank

Options/accessories Hydraulic hose



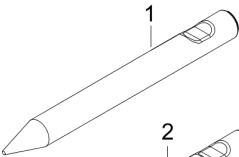
Item	Part No.	Name	Qty	L
	-	STANDARD CONNECTION HOSES	1	
-	3363115423	HYDRAULIC HOSE, both ends 18 L (M26x1.5) length 1750 mm (68 in.)	1	
-	3363491002	HYDRAULIC HOSE, both ends 18 L (M26x1.5) length 1500 mm (59 in.)	1	
-	3363101424	HYDRAULIC HOSE, I.D. 16 mm (0.63 in.) 18 L (M26 x 1.5), length 2000 mm (78.74 in.)	1	
-	3363115425	HYDRAULIC HOSE, both ends 18 L (M26x1.5) length 2400 mm (95 in.)	1	
	-	Heavy duty connction hoses with spring protection	1	
-	3360995717	HYDRAULIC HOSE, both ends 18 L (M26 x 1.5) length 1500 mm (59 in.)	1	
-	3363115426	HYDRAULIC HOSE, both ends 18 L (M26x1.5) length 1750 mm (68 in.)	1	
-	3362235159	HYDRAULIC HOSE, both ends 18 L (M26 x 1.5) length 2000 mm (79 in.)	1	
-	3363083313	HYDRAULIC HOSE, both ends 18 L (M26 x 1.5) length 2400 mm (95 in.)	1	

Options/accessories Optional equipment

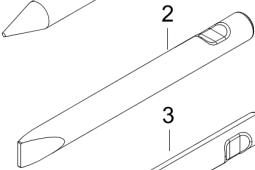


Item	Part No.	Name	Qty	L
900	3363094913	CHISEL PASTE CARTRIDGE FOR GREASE GUN, 12 x 400 g (12 x 0.88 lbs)	1	
901	0909107100	LUBRICAT.GUN	1	
902	3315303700	TEST GAUGE WEAR BUSH	1	
903	3363089844	MAINTENANCE AND CHARGING BOX, with nitrogen cylinder 2 l (0.43 gal (0.53 US gal))	1	
904	3363094940	MAINTENANCE AND CHARGING BOX without nitrogen cylinder	1	
905	3362269303	BASE PLATE WITH THROUGH BORINGS	1	
906	3363106507	BOLT KIT	1	
907	3315442506	HATCON KIT EC (3G)	1	
907	3315442526	HATCON KIT EC (LTE)	1	
908	3315439105	SECURITY BIT HATCON	1	
909	3315439106	MAGNET HATCON	1	

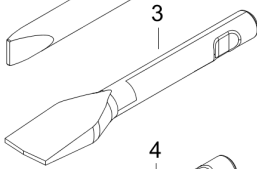
Options/accessories Working tools



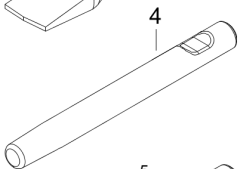
L=320 mm, Lt=530 mm, Wt=7.9 kg
L=12.6 inch, Lt=20.87 inch, Wt=17.4 lb



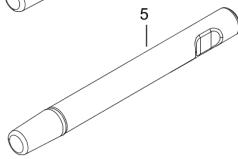
W=52 mm, L=320 mm, Lt=530 mm, Wt=8.3 kg
W=2.05 inch, L=12.6 inch, Lt=20.87 inch, Wt=18.3 lb



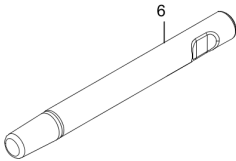
W=120 mm, L=370 mm, Lt=500 mm, Wt=9.7 kg
W=4.72 inch, L=14.57 inch, Lt=19.7 inch, Wt=21.4 lb



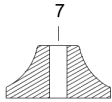
L=320 mm, Lt=530 mm, Wt=8.6 kg
L=12.60 inch, Lt=20.87 inch, Wt=19.0 lb



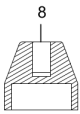
LT=340 mm, Wt=4,8 kg
LT=13.4 inch, Wt=10.6 lb



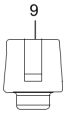
LT=490 mm, Wt=7.3kg
LT=19.3 inch, Wt=16.1 lb



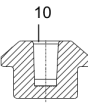
W= 200 mm, Wt=15 kg
W= 7.87 inch, Wt=33.1 lb



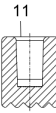
W=100 mm, Wt=8.5 kg
W=3.94 inch, Wt=18.7 lb



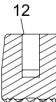
W=50 mm, Wt=3.3 kg
W=1.97 inch, Wt=7.3 lb



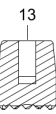
W=100 mm, Wt=5.4 kg
W=3.94 inch, Wt=11.9 lb



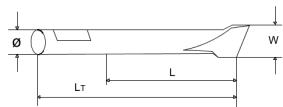
W=80 mm, Wt=3.1 kg
W=3.15 inch, Wt=6.8 lb



W=80 mm, Wt=4.3 kg
W=3.15 inch, Wt=9.5 lb



W=80 mm, Wt=5.2 kg
W=3.15 inch, Wt=11.5 lb



Item	Part No.	Name	Qty	L
1	3083342423	MOIL POINT	1	
2	3083342425	CHISEL (cross)	1	
3	3363120005	ASPHALT CUTTER (cross)	1	
4	3083342424	BLUNT TOOL	1	
5	3363125929	SHAFT	1	
6	3083342481	SHAFT	1	
7	3315370600	TAMPING PAD (square)	1	
8	3315371400	POST DRIVER PAD (round)	1	
9	3315372100	PILE DRIVER PAD (round)	1	
10	3315372200	PILE DRIVER	1	
11	3315372700	BUSH HAMMER	1	
12	3315372800	BUSHING PAD (round)	1	
13	3315372900	BUSH HAMMER	1	

Any unauthorized use or copying of the contents or any part thereof is prohibited.
This applies in particular to trademarks, model denominations, part numbers, and drawings.