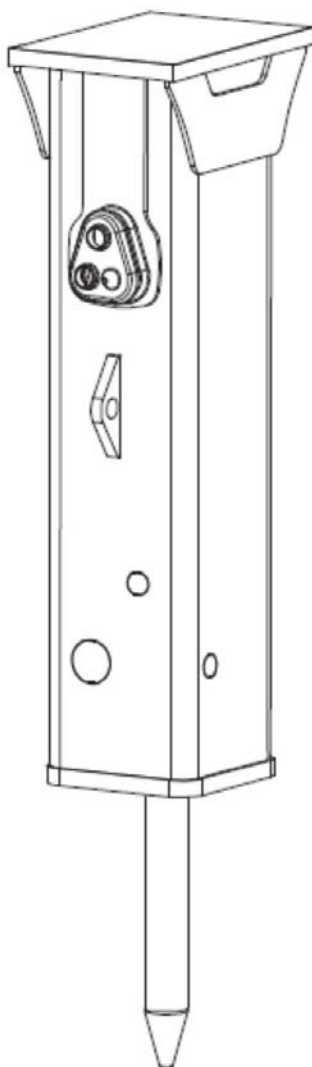


Spare parts list

Hydraulic breakers

EC 40T s/n BES079883 - BES095051



This spare parts list applies to the following:

Part number	Description
8460050102	EC 40T
8460050104	EC 40T (No sticker)

Use only authorized parts. Any damage or malfunction caused by the use of unauthorized parts is not covered by Warranty or Product Liability. Any unauthorized use or copying of the contents or any part thereof is prohibited. This applies in particular to trademarks, model denominations, part numbers, and drawings.

Instructions for use

This spare parts list contains no safety regulations and is merely intended to assist in the ordering of spare parts.

For information about operating, servicing, or repairing, the relevant Safety and operating instructions must be consulted at all costs.

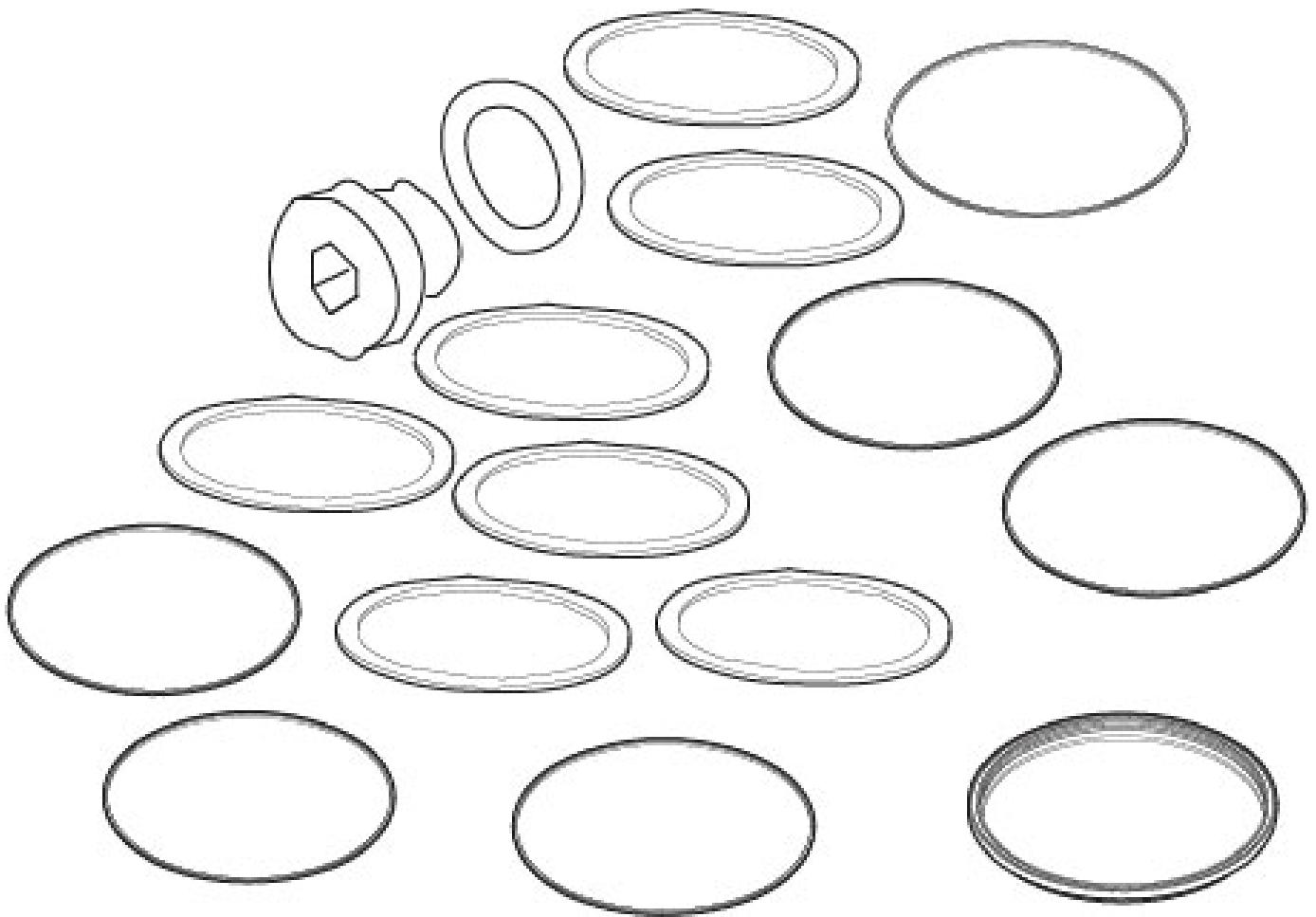
Please observe the safety instructions listed in the relevant Safety and operating instructions!

Kits and consumables	1
Service, repair and wear part kits	
Seal kit	3
Label kit	5
Mechanical	
Hydraulic breaker	7
Impact mechanism old version (- BES094081)	9
Impact mechanism upgrade (BES094082 -)	11
Main dimensions, mm (in.)	13
Tightening torque	14
Options/accessories	
Optional equipment	17
Hydraulic hose	19
Working tools	21

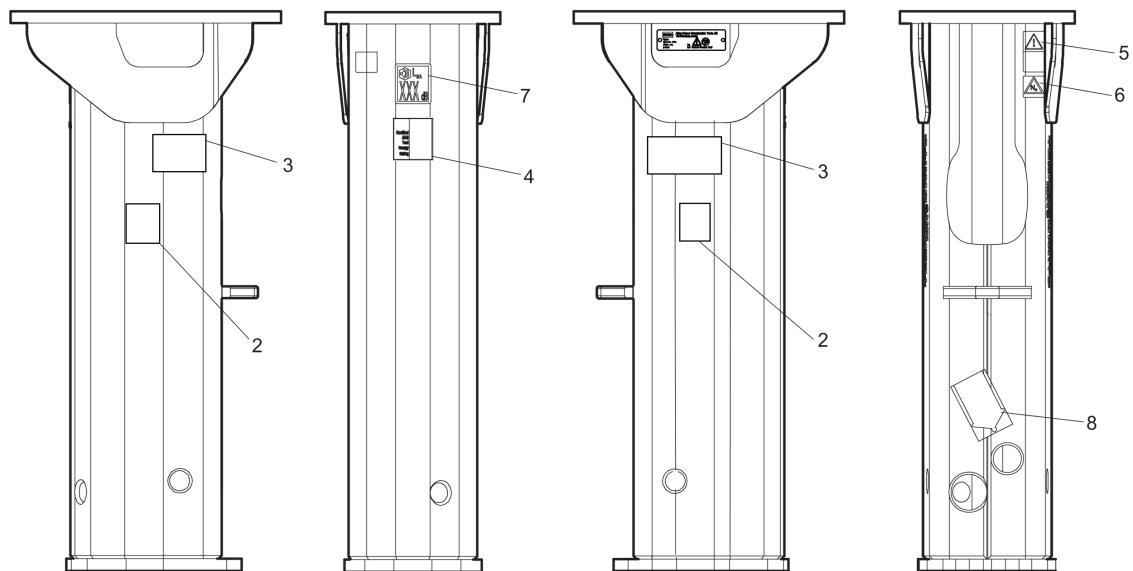
Kits and consumables

Service offers resume EC40T	Item	Description
Lubricants	1	Chisel paste cartridge (for manual greasing)
Main wear part	2	Elastic pad
	3	Retainer pin
	4	Shock absorber
	5	Split pin retainer
	6	Wear bush
Rebuild&Overhaul kits	7	Label kit
Start-Up Kits	8	Start-Up Kit Blunt
	9	Start-Up Kit Chisel (cross)
	10	Start-Up Kit Moil point
Wear&Repair Kits	11	Filling valve complete
	12	Seal kit

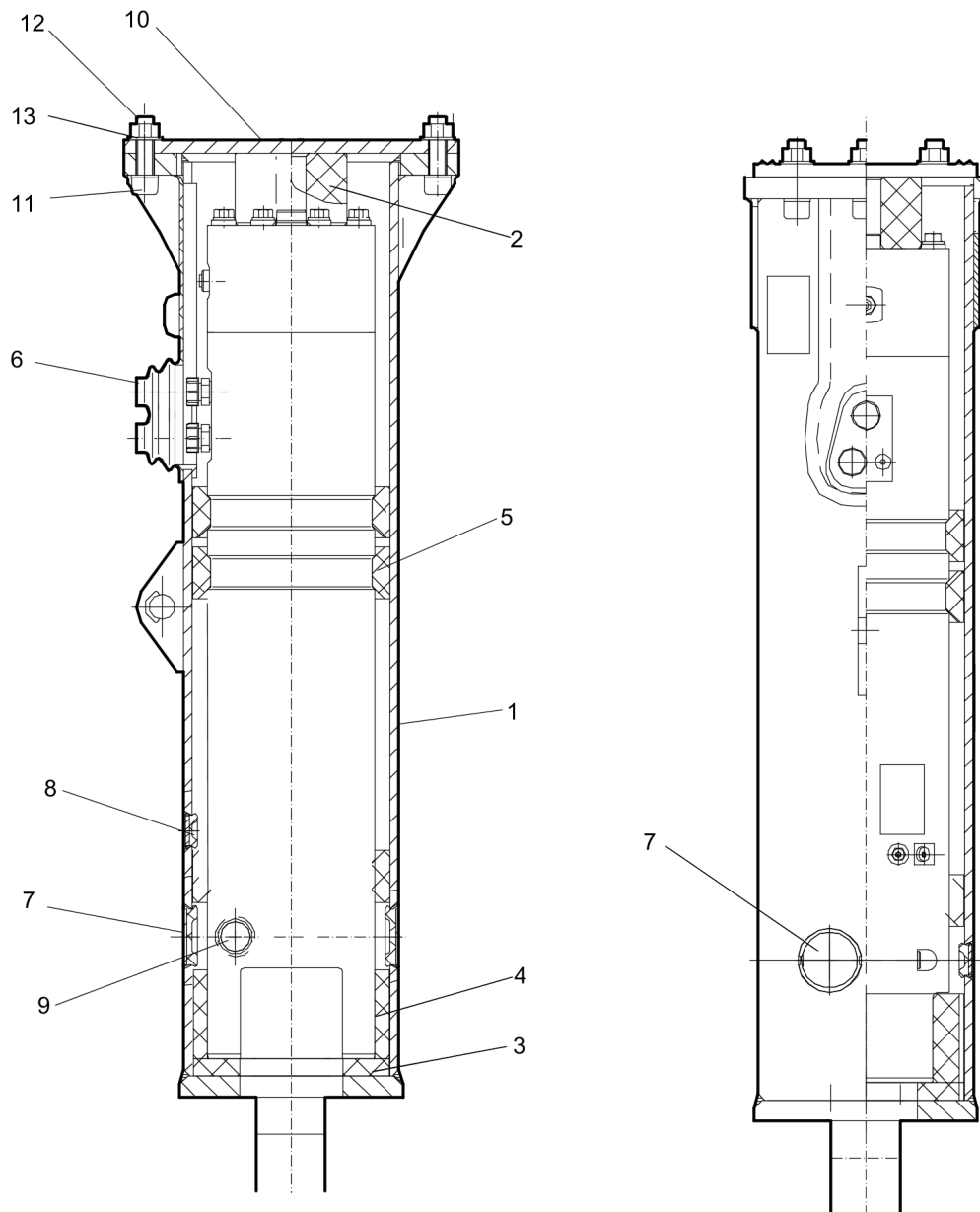
Item	Part No.	Name	Qty	L
1	3363094913	Chisel paste cartridge for grease gun, 12 x 400 g (0.88 lbs)	1	
2	3362491011	Elastic pad	1	
3	3361110010	Retainer pin	1	
4	3315288200	Shock absorber	1	
5	3363083854	Split pin	1	
6	3361110019	Wear bush	1	
7	3382070013	Label kit	1	
8	3382070019	Start-Up Kit Blunt	1	
9	3382070018	Start-Up Kit Chisel (cross)	1	
10	3382070017	Start-Up Kit Moil point	1	
11	3363087286	Filling valve complete	1	
12	3361110011	Seal kit	1	

Service, repair and wear part kits Seal kit

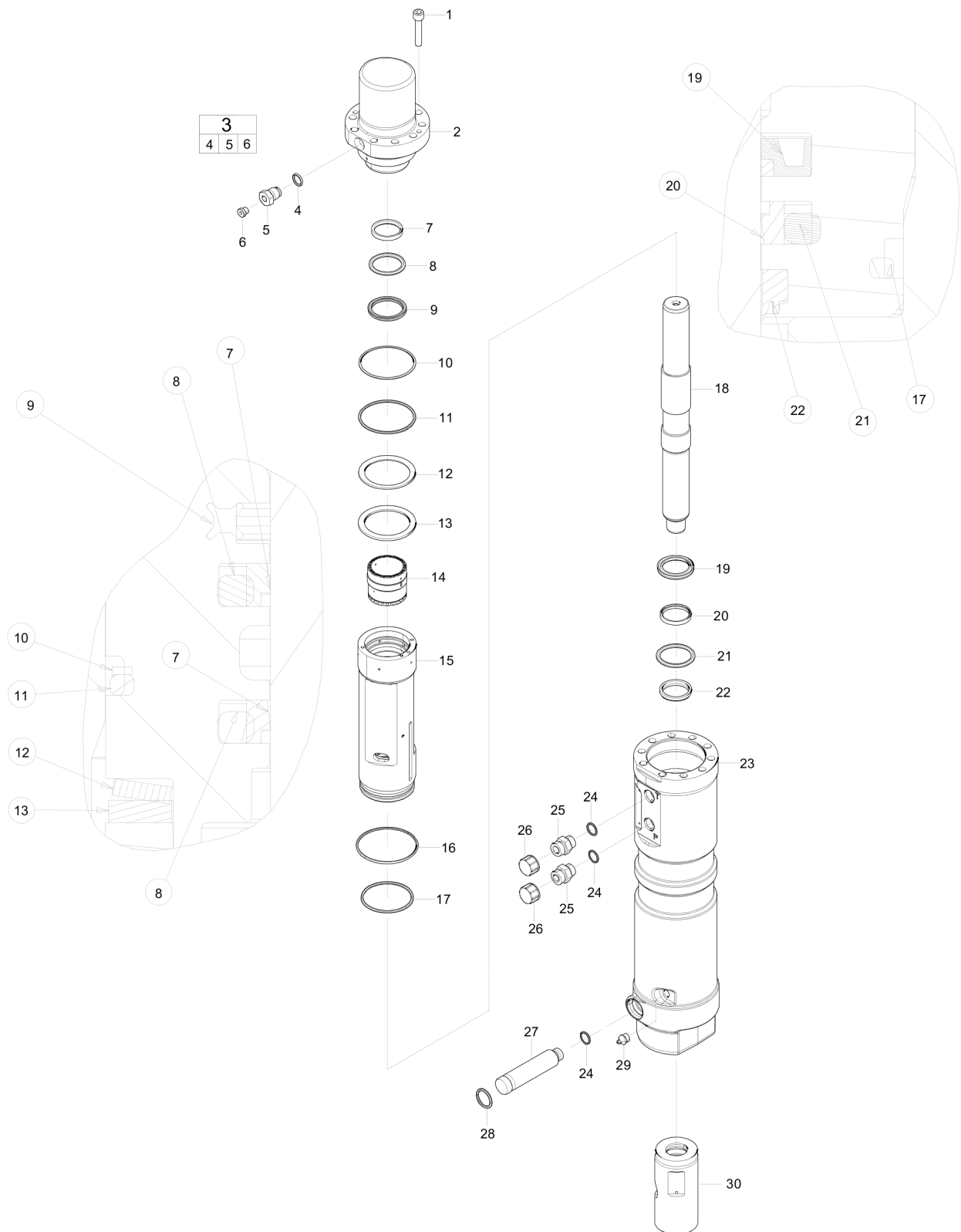
Item	Part No.	Name	Qty	L
1	3361110011	Seal kit	1	
2	0663925100	O-ring, 15.08x2.62	1	
3	3360478426	Threaded plug	1	
4	3361192052	Seal, 37.46 x 5.33 mm, (1.48 x 0.21") (70 shore)	1	
5	3361192053	stepseal	2	
6	3361192068	O-ring, 46.99 x 5.33 mm, (1.85 x 0.21") (70 shore)	1	
7	3361192055	O-ring, 56.74 x 3.53 mm, 2.23 x 0.14 in. (90 shore)	1	
8	3361192056	Back-up ring, 57.71 x 3 mm , 2.27 x 0.12 in. (90 shore)	1	
9	3361192057	O-ring, 78.97 x 3.53 mm, 3.11 x 0.14 in. (90 shore)	1	
10	3361192058	Back-up ring, 79.53 x 3 mm , (3.13 x 0.12") (90 shore)	1	
11	3361192072	O-ring, 43.82 x 5.33 mm, (1.73 x 0.21")	1	
12	3315296605	one piece Seal	1	
13	3361192061	O-ring, 72 x 3.53 mm, 2.84 x 0.14 in. (90 shore)	1	
14	3361192063	Seal, 40 x 55.6 x 6 mm, (1.58 x 2.19 x 0.24")	1	
15	3361192064	stepseal	1	
16	3361192065	Wiper, 40 x 48 x 5 mm, (1.58 x 1.89 x 0.20")	1	
17	3361192066	O-ring, 16.36x2.21	1	

Service, repair and wear part kits Label kit

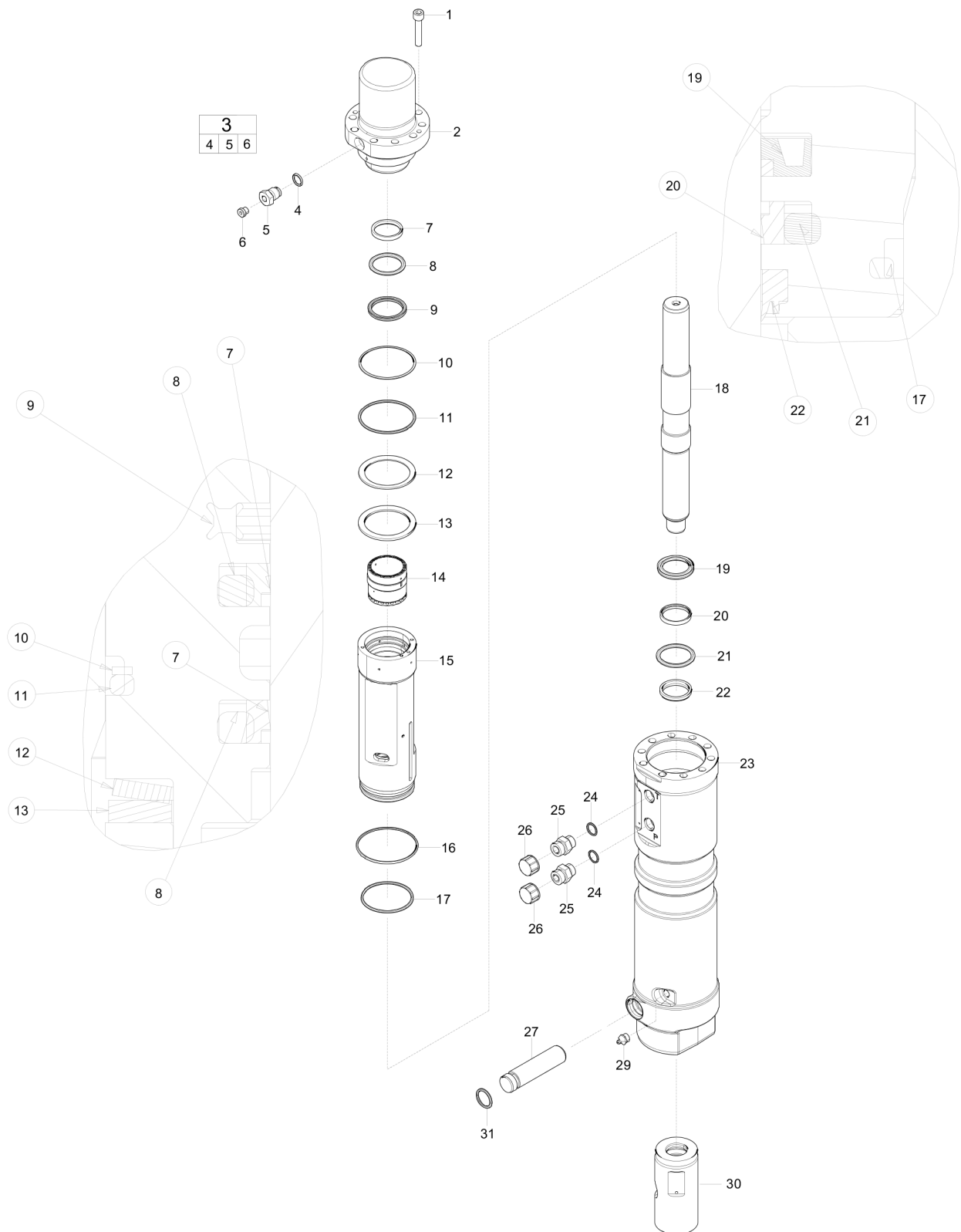
Item	Part No.	Name	Qty	L
1	3382070013	Label kit	1	
2	-	Product label	2	
3	-	Product label	2	
4	-	AEM sign	1	
5	3315262900	Safety label	1	
6	3315263000	Safety label	1	
7	-	Sound power label, 109 dB	1	
8	3360995411	Label - Lubricating symbol	1	

Mechanical Hydraulic breaker

Item	Part No.	Name	Qty	L
1	3315286100	Hammer box	1	
2	3362491011	Elastic pad	1	
3	3315288200	Shock absorber	1	
4	3315288300	Guide plate	1	
5	3315288400	Guide plate	2	
6	3362491012	Cover	1	
7	3362491013	Plug	1	
8	3362491014	Plug	1	
9	3362491015	Plug	3	
10	-	Base plate, see Optional equipment	1	
11	3360026644	Allen screw	6	
12	3360103270	Nut	6	
13	3361333703	Pair of lock washers	12	

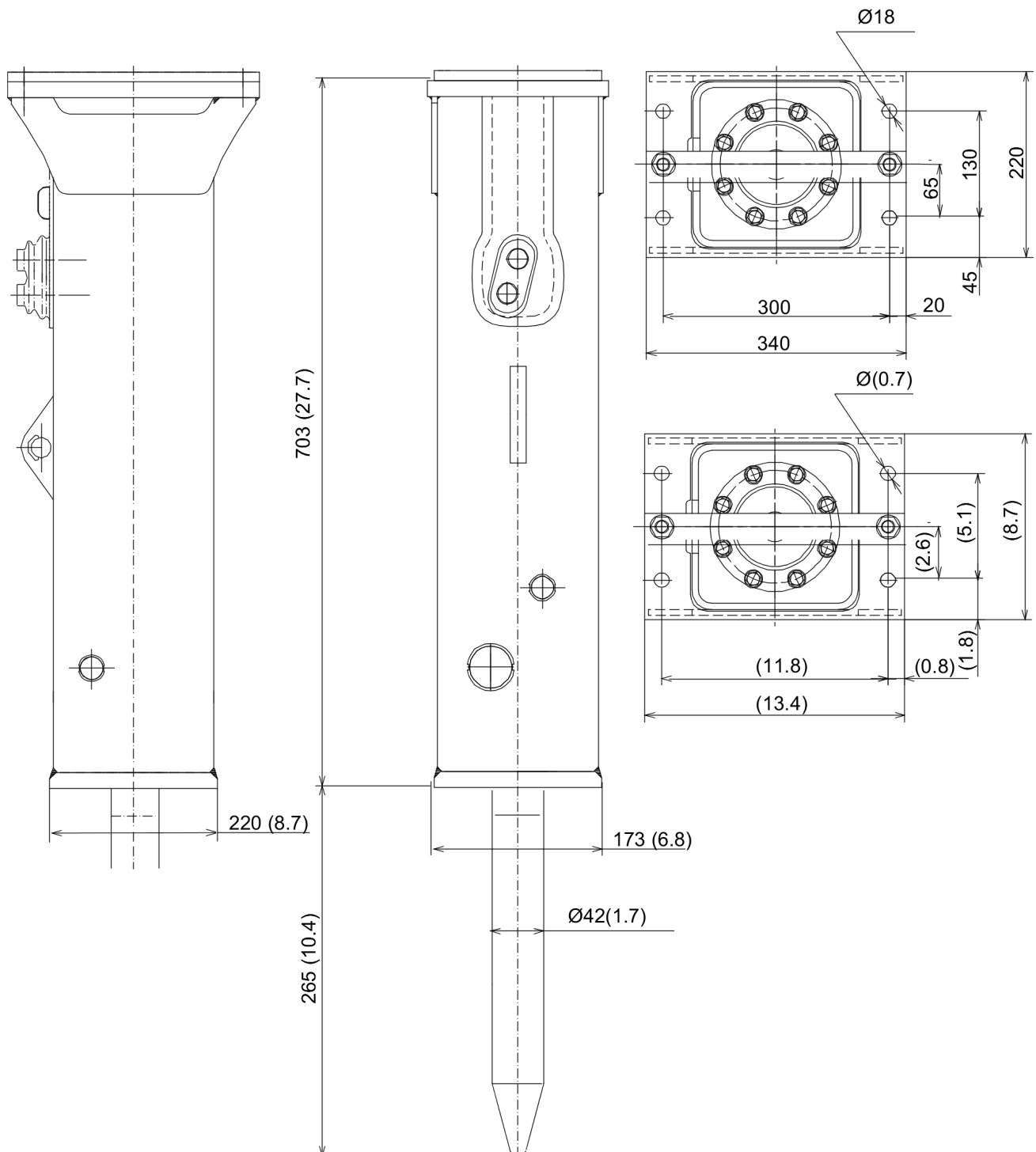
Mechanical Impact mechanism old version (- BES094081)

Item	Part No.	Name	Qty	L
1	3315431103	MC6S M10X50 8.8 G627	10	
2	3315430200	Back head	1	
3	3363087286	Filling valve complete	1	
4	0663925100	O-ring, 15.08x2.62	1	
5	-	Filling valve	1	
6	3360478426	Threaded plug	1	
7	3361192053	stepseal	2	
8	3361192072	O-ring, 43.82 x 5.33 mm, (1.73 x 0.21")	2	
9	3361192052	Seal, 37.46 x 5.33 mm, (1.48 x 0.21") (70 shore)	1	
10	3361192058	Back-up ring, 79.53 x 3 mm , (3.13 x 0.12") (90 shore)	1	
11	3360314456	O-ring, 78.97 x 3.53 mm, 3.11 x 0.14 in. (90 shore)	1	
12	3361110004	Plate spring	1	
13	3361110005	Spacer	1	
14	3361110106	Control valve	1	
15	3361110002	Cylinder bush	1	
16	3315296605	one piece Seal	1	
17	3360314661	O-ring, 72 x 3.53 mm, 2.84 x 0.14 in. (90 shore)	1	
18	3315332500	Piston	1	
19	3361192063	Seal, 40 x 55.6 x 6 mm, (1.58 x 2.19 x 0.24")	1	
20	3361192064	stepseal	1	
21	3361192068	O-ring, 46.99 x 5.33 mm, (1.85 x 0.21") (70 shore)	1	
22	3361192065	Wiper, 40 x 48 x 5 mm, (1.58 x 1.89 x 0.20")	1	
23	3315430100	Main Body	1	
24	3361192066	O-ring, 16.36x2.21	3	
25	3361031612	Fitting	2	
26	3361353485	Cap	2	
27	3315429810	Retainer pin	1	
28	0663212111	O-RING 22X3,5	1	
29	3363070299	Grease nipple, ISO 7-R 1/4	1	
30	3361110019	Wear bush	1	

Mechanical Impact mechanism upgrade (BES094082 -)

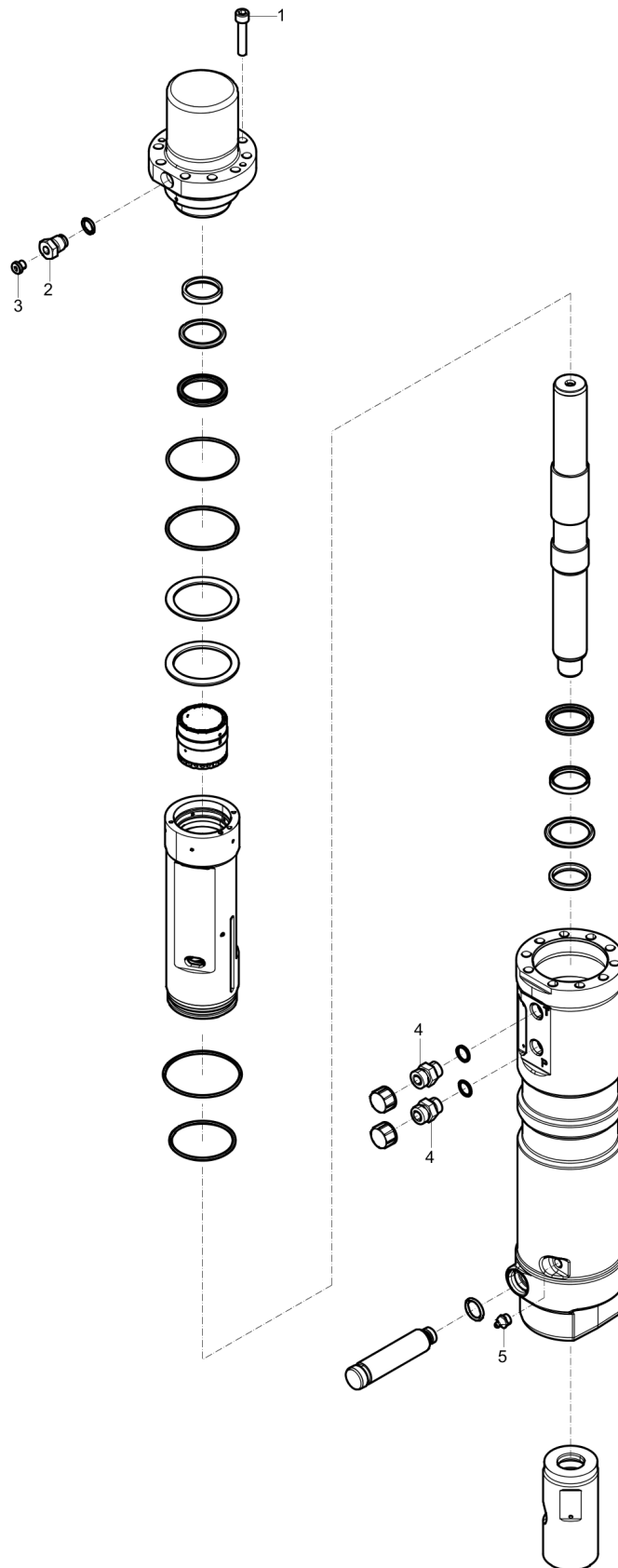
Refer to the Parts Online web page for most up-to-date information. The printed information might be outdated.

Item	Part No.	Name	Qty	L
1	3315431103	MC6S M10X50 8.8 G627	10	
2	3315430200	Back head	1	
3	3363087286	Filling valve complete	1	
4	0663925100	O-ring, 15.08x2.62	1	
5	-	Filling valve	1	
6	3360478426	Threaded plug	1	
7	3361192053	stepseal	2	
8	3361192072	O-ring, 43.82 x 5.33 mm, (1.73 x 0.21")	2	
9	3361192052	Seal, 37.46 x 5.33 mm, (1.48 x 0.21") (70 shore)	1	
10	3361192058	Back-up ring, 79.53 x 3 mm , (3.13 x 0.12") (90 shore)	1	
11	3361192057	O-ring, 78.97 x 3.53 mm, 3.11 x 0.14 in. (90 shore)	1	
12	3361110004	Plate spring	1	
13	3361110005	Spacer	1	
14	3361110106	Control valve	1	
15	3361110002	Cylinder bush	1	
16	3315296605	one piece Seal	1	
17	3361192061	O-ring, 72 x 3.53 mm, 2.84 x 0.14 in. (90 shore)	1	
18	3315332530	Piston	1	
19	3361192063	Seal, 40 x 55.6 x 6 mm, (1.58 x 2.19 x 0.24")	1	
20	3361192064	stepseal	1	
21	3361192068	O-ring, 46.99 x 5.33 mm, (1.85 x 0.21") (70 shore)	1	
22	3361192065	Wiper, 40 x 48 x 5 mm, (1.58 x 1.89 x 0.20")	1	
23	3315430105	Cylinder housing	1	
24	3361192066	O-ring, 16.36x2.21	2	
25	3361031612	Fitting	2	
26	3361353485	Cap	2	
27	3315429812	Retainer pin	1	
29	0544215300	Grease nipple, ISO 7-R 1/4	1	
30	3361110019	Wear bush	1	
31	0663212111	O-RING 22X3,5		

Mechanical Main dimensions, mm (in.)

Refer to the Parts Online web page for most up-to-date information. The printed information might be outdated.

This page intentionally left blank

Mechanical Tightening torque

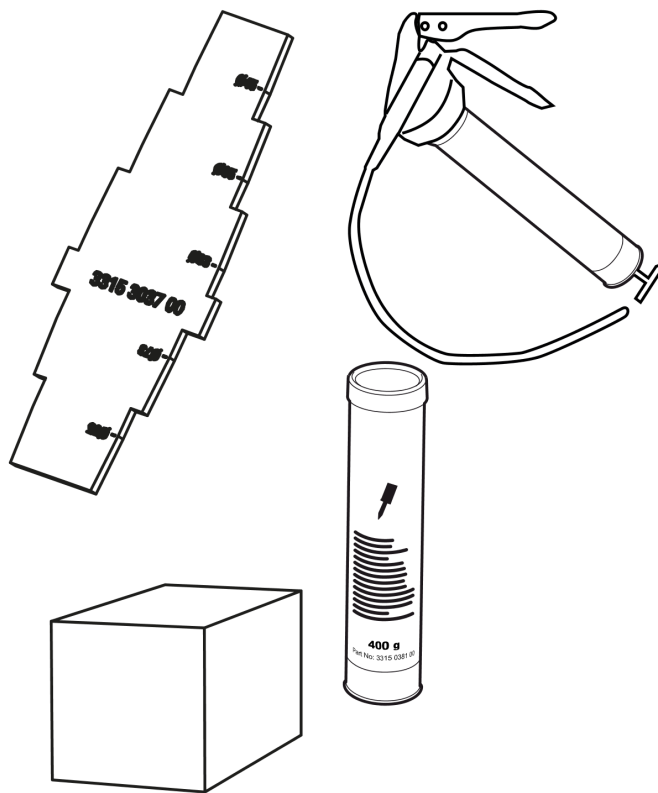
Item	Part No.	Name	Qty	L
1	-	MC6S M10x50 8.8		A
2	-	Filling valve - 130 Nm		
3	-	Threaded plug - 20 Nm		
4	-	Fitting - 60 Nm		
5	-	Grease nipple - 20 Nm		

Comments for Page: Tightening torque

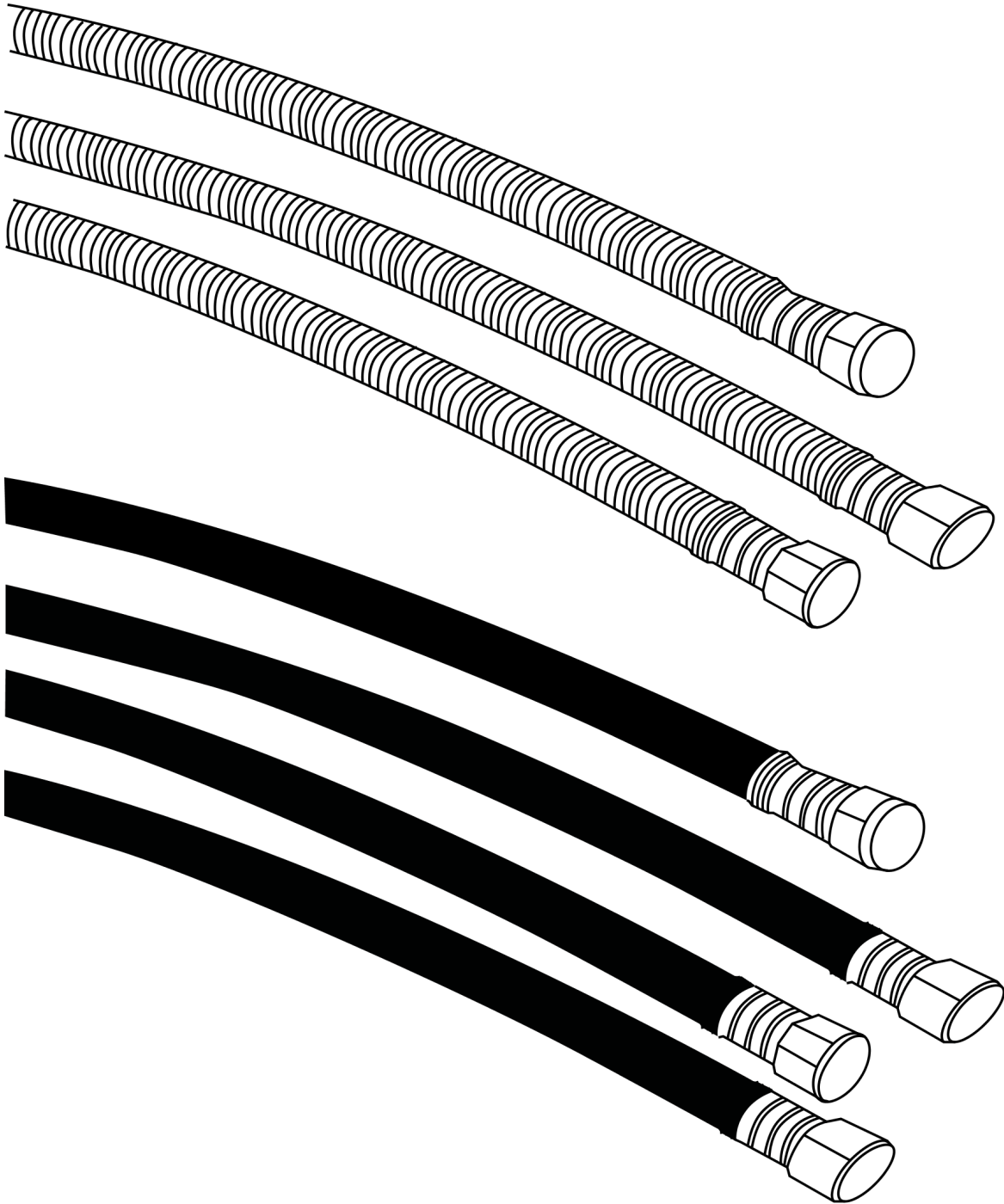
A: Pretighten the bolts to 15 Nm, proceeding in a crosswise fashion,

then tighten each bolt through 60° in a crosswise fashion,

finally tighten each bolt again through 30° in a crosswise fashion.

Options/accessories Optional equipment

Item	Part No.	Name	Qty	L
1	3363094913	Chisel paste cartridge for grease gun, 12 x 400 g (0.88 lbs)	1	
2	0909107100	Grease gun for 400 g cartridge	1	
3	3315303700	Test gauge wear bush	1	
4	3363089844	Maintenance and charging box with nitrogen cylinder, 2 l, 0.43 gal (0.53 US gal)	1	
5	3363094940	Maintenance and charging box without nitrogen cylinder	1	
6	3362269303	Base plate with through borings	1	
7	3363106507	Bolt kit	1	

Options/accessories Hydraulic hose

Item	Part No.	Name	Qty	L
1	-	Standard connection hoses	1	
2	3363115420	Hydraulic hose, I.D. 12 (0.47"), both ends M 22 x 1.5, conical seal 24°, length 1500 mm (59.05 in.)	2	A
3	3363491001	Hydraulic hose, I.D. 12 (0.47"), both ends M22 x 1.5, conical seal 24°, length 1750 mm (69 in.)	2	B
4	3363101421	Hydraulic hose, I.D. 12 (0.47"), both ends M 22 x 1.5, conical seal 24°, length 2100 mm (82.68 in.)	2	C
5	-	Heavy duty connction hoses with spring protection	1	
6	3363115422	Hydraulic hose, I.D. 12 (0.47"), both ends M 22 x 1.5, conical seal 24°, length 1500 mm (59.05 in.)	2	D
7	3363353551	Hose	2	E
8	3363085946	Hydraulic hose, I.D. 12 (0.47"), both ends M22 x 1.5, conical seal 24°, length 2100 mm (83 in.)	2	F

Comments for Page: Hydraulic hose

A | 15 L, (M 22 x 1.5), length 1500 mm (59 in.)

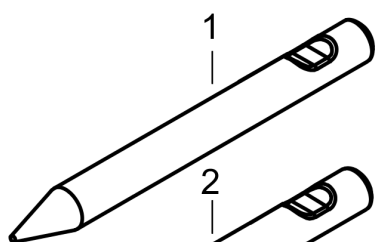
B | 15 L, (M 22 x 1.5), length 1750 mm (69 in.)

C | 15 L, (M 22 x 1.5), length 2100 mm (83 in.)

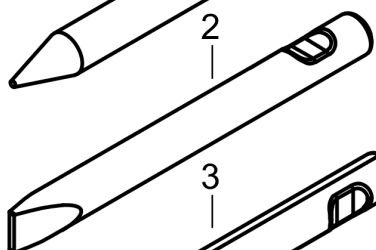
D | 15 L, (M 22 x 1.5), length 1500 mm (59 in.)

E | 15 L, (M 22 x 1.5), length 1750 mm (69 in.)

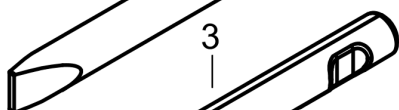
F | 15 L, (M 22 x 1.5), length 2100 mm (83 in.)

Options/accessories Working tools

L=320 mm, Lt=530 mm, Wt=7.9 kg
L=12.6 inch, Lt=20.87 inch, Wt=17.4 lb



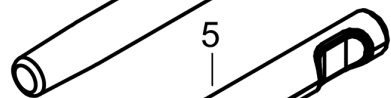
W=52 mm, L=320 mm, Lt=530 mm, Wt=8.3 kg
W=2.05 inch, L=12.6 inch, Lt=20.87 inch, Wt=18.3 lb



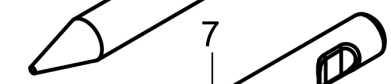
W=120 mm, L=370 mm, Lt=500 mm, Wt=9.7 kg
W=4.72 inch, L=14.57 inch, Lt=19.7 inch, Wt=21.4 lb



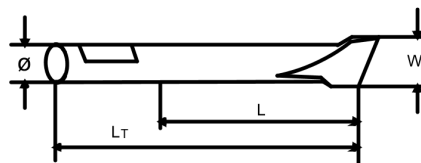
L=320 mm, Lt=530 mm, Wt=8.6 kg
L=12.60 inch, Lt=20.87 inch, Wt=19.0 lb



L=320 mm, Lt=530 mm, Wt=7.9 kg
L=12.6 inch, Lt=20.87 inch, Wt=17.4 lb



L=320 mm, Lt=530 mm, Wt=8.6 kg
L=12.60 inch, Lt=20.87 inch, Wt=19.0 lb



Item	Part No.	Name	Qty	L
1	3363110001	Moil point	1	A
2	3363110002	Chisel (cross)	1	B
3	3363110005	Asphalt cutter (cross)	1	C
4	3363110003	Blunt tool	1	D
5	3083342420	Narrow chisel	1	
6	3083342421	Moil point	1	
7	3083342422	Blunt tool	1	

Comments for Page: Working tools

A | L=265 mm, Lt=425 mm, Wt=4.0 kg

L=10.43 inch, Lt=16.73 inch, Wt=8.8 lb

B | W=42 mm, L=265 mm, Lt=425 mm, Wt=4.2 kg

W=1.65 inch, L=10.43 inch, Lt=16.73 inch, Wt=9.3 lb

C | W=120 mm, L=290 mm, Lt=450 mm, Wt=4.7 kg

W=4.72 inch, L=11.42 inch, Lt=11.72 inch, Wt=10.4 lb

D | L=265 mm, Lt=425 mm, Wt=4.4 kg

L=10.43 inch, Lt=16.73 inch, Wt=9.7 lb

E | L=415 mm

F | L=415 mm

G | L=415 mm

Any unauthorized use or copying of the contents or any part thereof is prohibited.
This applies in particular to trademarks, model denominations, part numbers, and
drawings.

