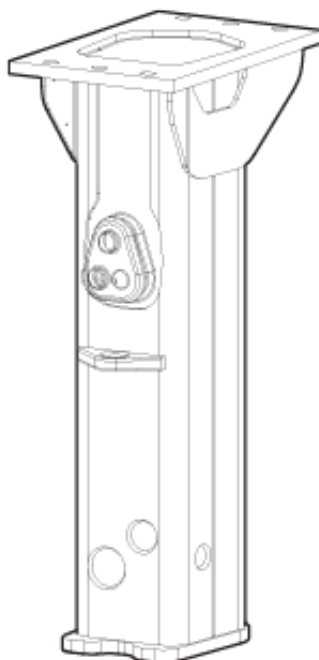


Spare parts list

Hydraulic breaker

EC 60T s/n BES091334 - BES095067



General information

This spare parts list applies to the following:

Part number	Description
8460050092	EC 60T
8460050093	EC 60T no sticker

Use only authorized parts. Any damage or malfunction caused by the use of unauthorized parts is not covered by Warranty or Product Liability.
Any unauthorized use or copying of the contents or any part thereof is prohibited. This applies in particular to trademarks, model denominations, part numbers, and drawings.

Instructions for use

This spare parts list contains no safety regulations and is merely intended to assist in the ordering of spare parts.

For information about operating, servicing, or repairing, the relevant Safety and operating instructions must be consulted at all costs.

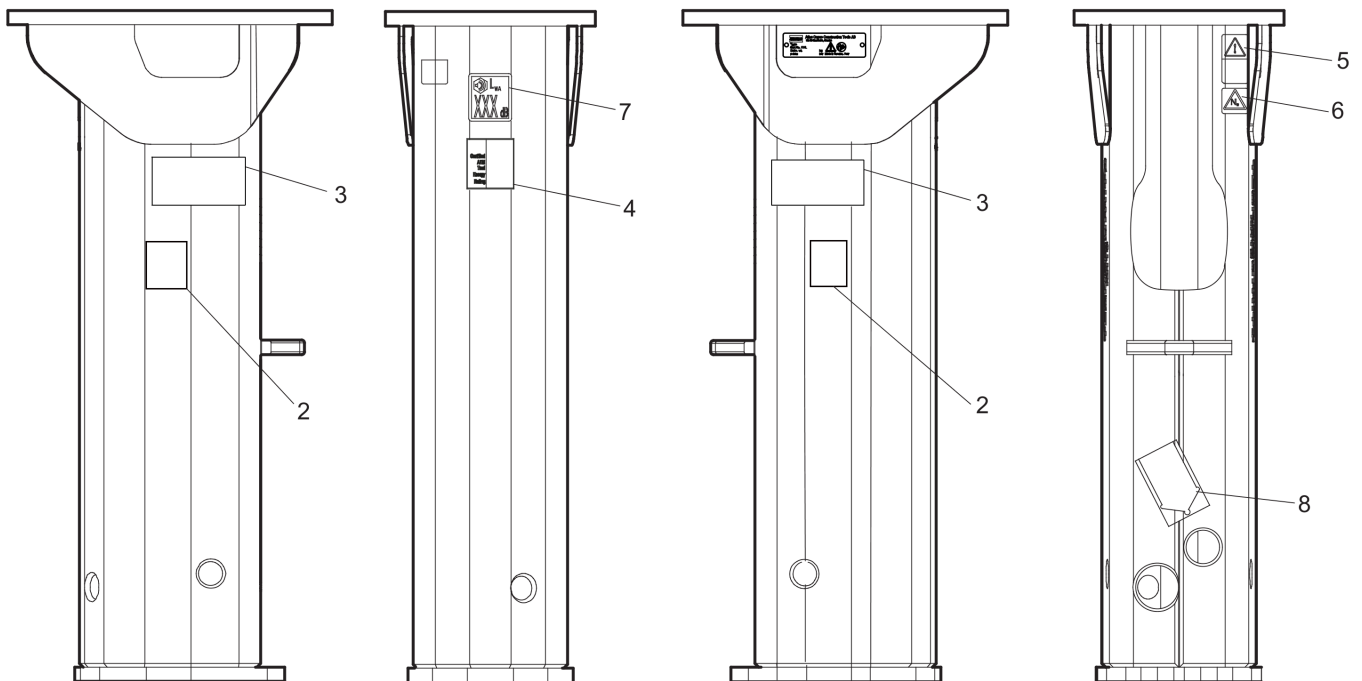
Please observe the safety instructions listed in the relevant Safety and operating instructions!

Kits and consumables	1
Service, repair and wear part kits	
Label kit	3
Seal kit	5
Mechanical	
Spare parts list	7
Tightening torques	9
Hydraulic breaker	11
Assembly instruction	13
Dimension	14
Options/accessories	
Optional equipment	16
Hydraulic hoses	19

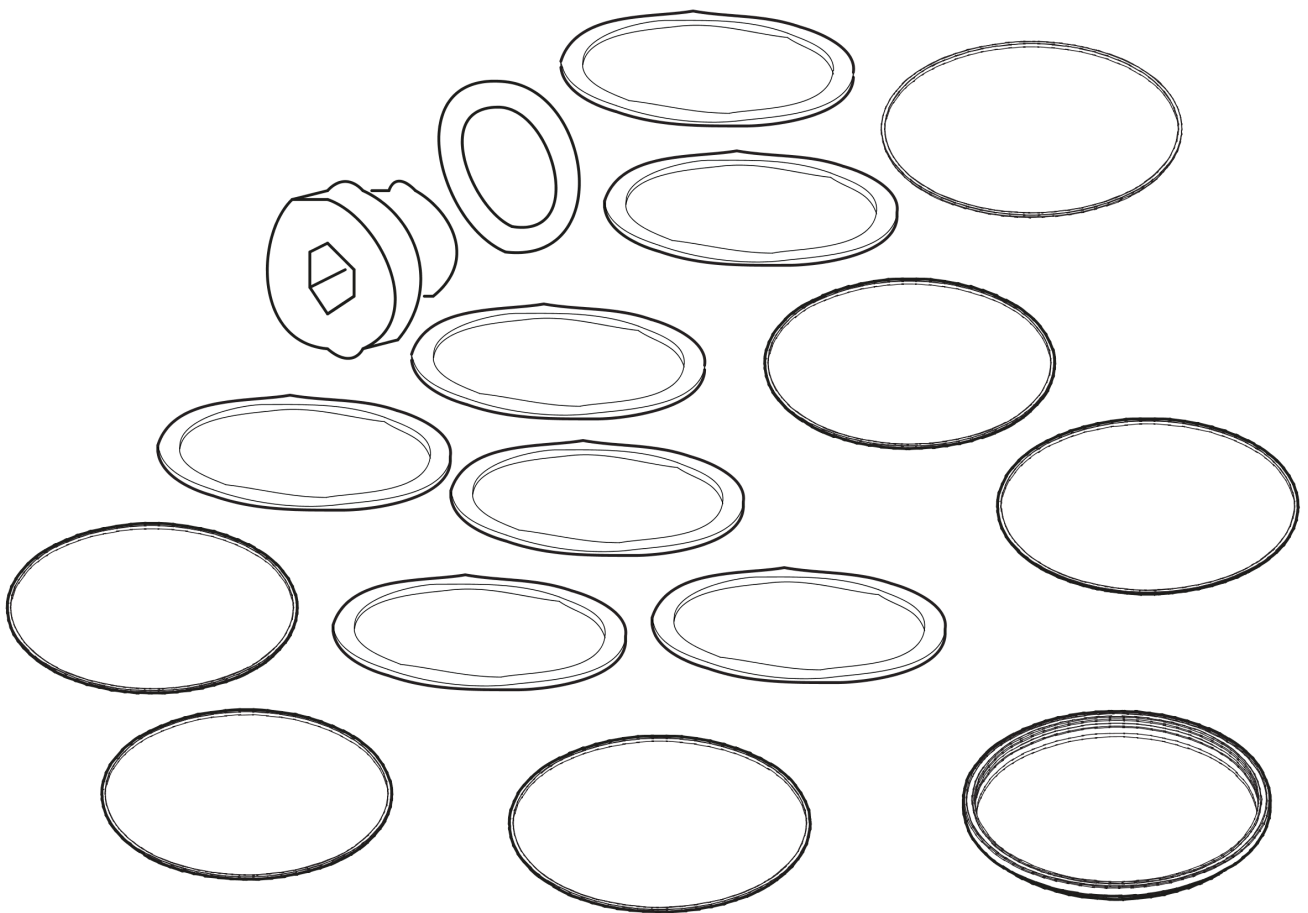
Kits and consumables

Service offers resume EC60T	Item	Description
Lubricants	1	Chisel paste cartridge (for manual greasing)
Main wear part	2	Elastic pad
	3	Retainer pin
	4	Shock absorber
	5	Split pin retainer
	6	Wear bush
Rebuild&Overhaul kits	7	Label kit
Start-Up Kits	8	Start-Up Kit Blunt
	9	Start-Up Kit Chisel (cross)
	10	Start-Up Kit Moil point
Wear&Repair Kits	11	Filling valve complete
	12	Seal kit

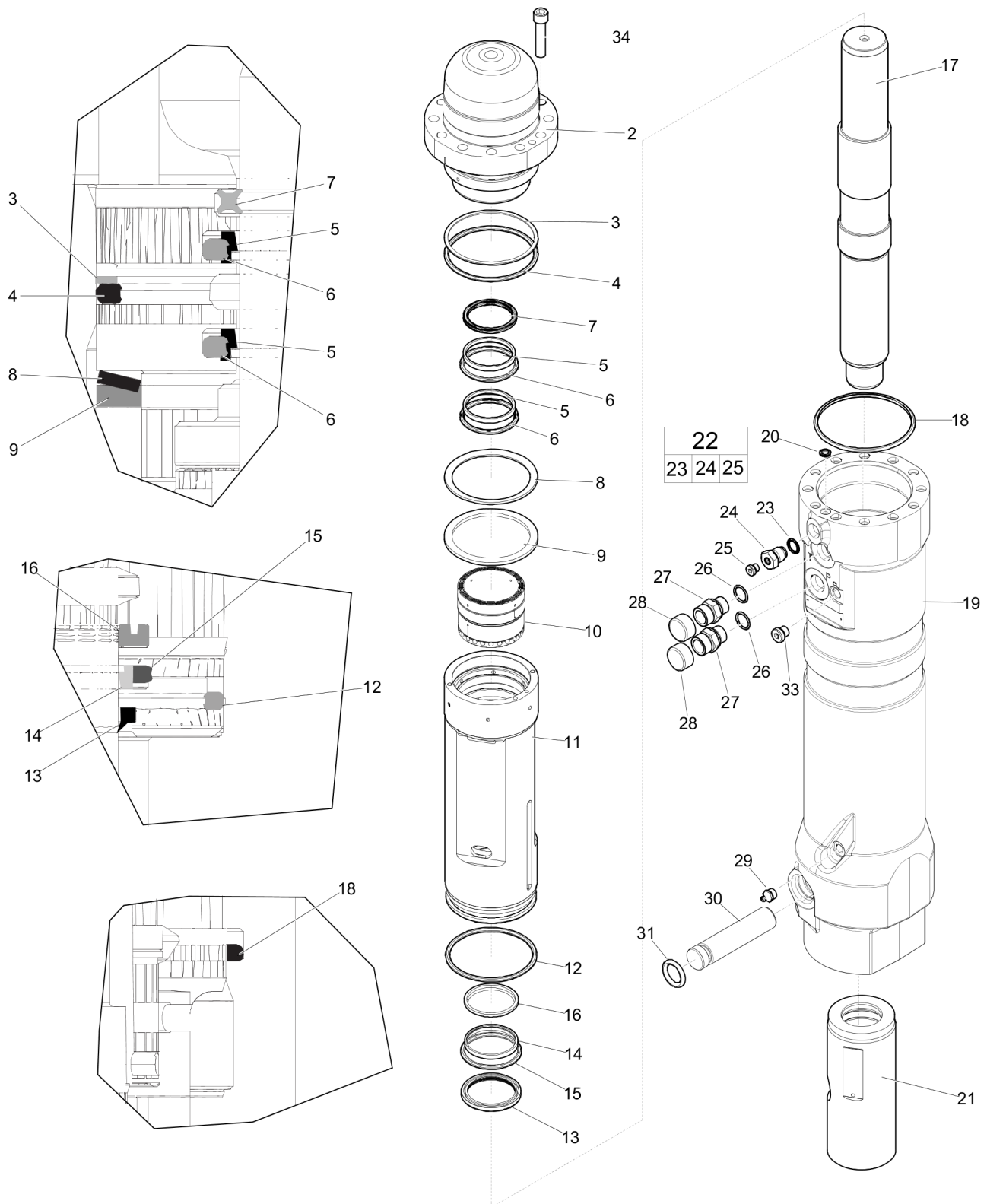
Item	Part No.	Name	Qty	L
1	3363094913	Chisel paste cartridge for grease gun, 12 x 400 g (0.88 lbs)	1	
2	3362491005	Elastic pad	1	
3	3361130010	Retainer pin	1	
4	3315289600	Shock absorber	1	
6	3361130009	Wear bush	1	
7	3382070015	Label kit	1	
8	3382070025	Start-Up Kit Blunt	1	
9	3382070024	Start-Up Kit Chisel (cross)	1	
10	3382070023	Start-Up Kit Moil point	1	
11	3363087286	Filling valve complete	1	
12	3361130011	Seal kit	1	

Service, repair and wear part kits Label kit

Item	Part No.	Name	Qty	L
1	3382070015	Label kit	1	
2	-	Product label	2	
3	-	Product label	2	
4	-	AEM sign	1	
5	3315262900	Safety label	1	
6	3315263000	Safety label	1	
7	-	Sound power label, 109 dB	1	
8	3360995411	Label - Lubricating symbol	1	

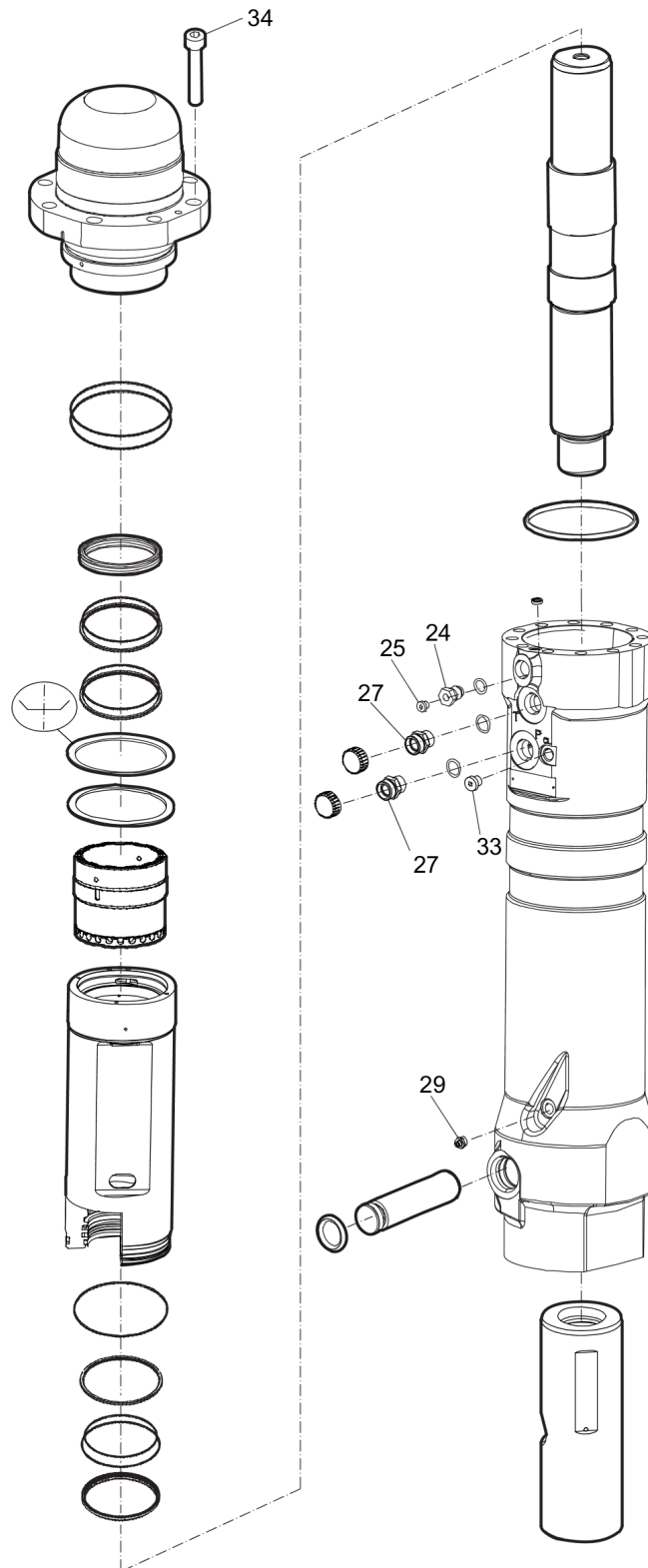
Service, repair and wear part kits Seal kit

Item	Part No.	Name	Qty	L
1	3382070008	Seal kit	1	
2	0663211949	O-ring, 26 x 6 mm	1	
3	0663925100	O-ring, 15.08x2.62	1	
4	3115329002	Seal, SRC 8 x 14 x 2.4 mm	1	
5	3315296615	Seal, ø118 mm	2	
6	3360478426	Threaded plug	1	
7	3363091709	O-ring, 104.14 x 5.33 mm	1	
8	3361192031	Quadring, 56.69 x 5.33 mm	1	
9	3361192032	Seal	2	
10	3361192033	O-ring, 62.87 x 5.33 mm	2	
11	3361192035	O-ring, 107.32 x 5.33 mm	1	
12	3361192036	Back-up ring, 108.66 x 4.65 mm	1	
13	3361192038	Seal, 60 x 75.5 x 6.3 mm	1	
14	3361192039	Seal	1	
15	3361192040	O-ring, 66.04 x 5.33 mm	1	
16	3360192066	O-ring	1	
17	3361192067	O-ring	2	

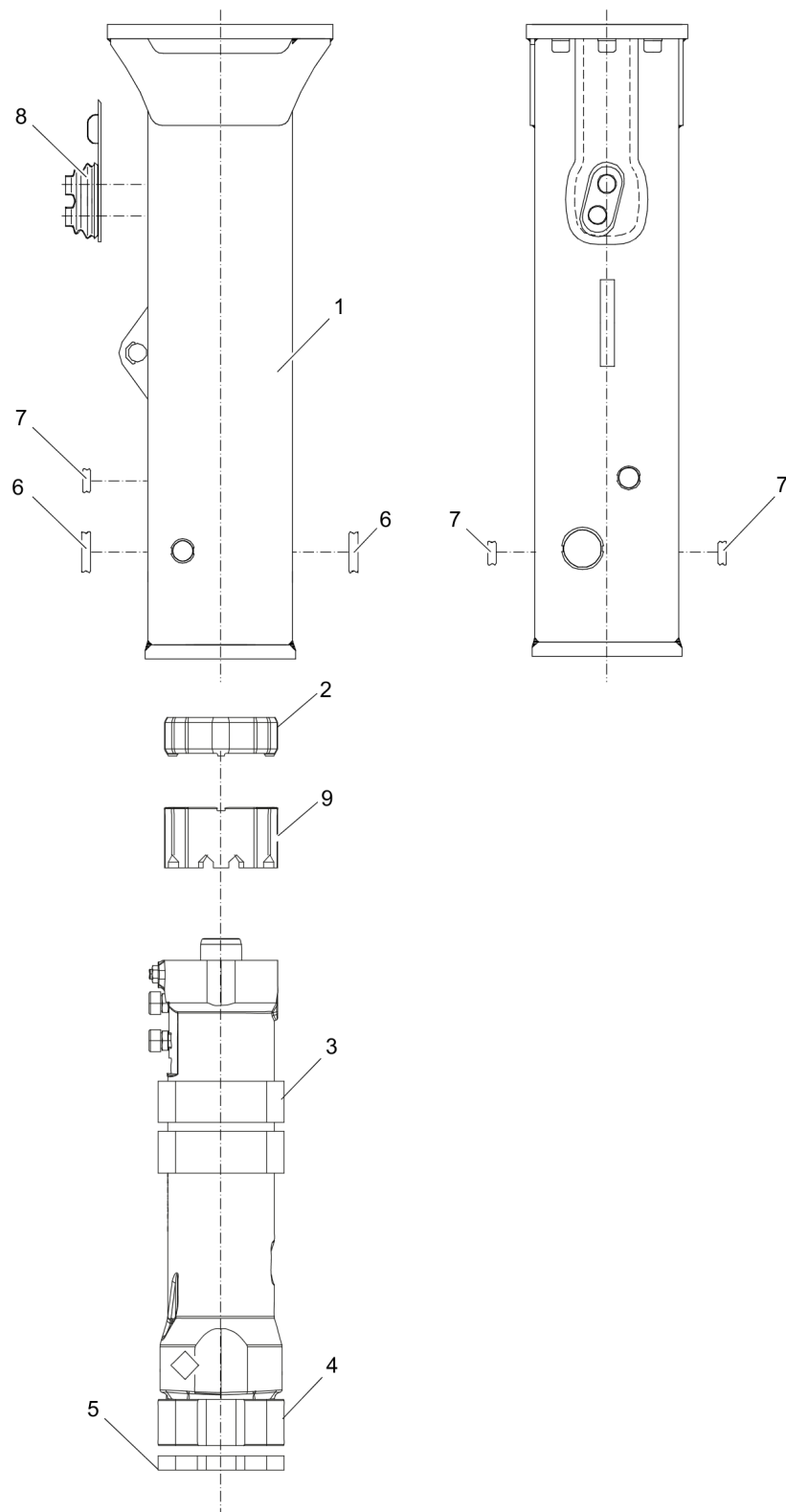
Mechanical Spare parts list

Refer to the Parts Online web page for most up-to-date information. The printed information might be outdated.

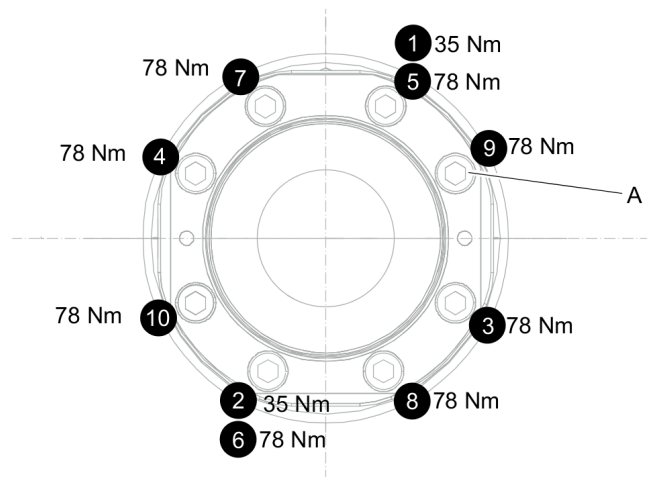
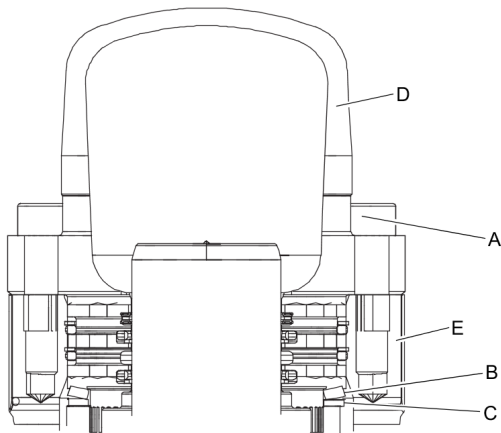
Item	Part No.	Name	Qty	L
2	3315416500	Back head	1	
3	3361192036	Back-up ring, 108.66 x 4.65 mm	1	
4	3361192035	O-ring, 107.32 x 5.33 mm	1	
5	3361192032	Seal	2	
6	3361192033	O-ring, 62.87 x 5.33 mm	2	
7	3361192031	Quadrang, 56.69 x 5.33 mm	1	
8	3361130004	Plate spring	1	
9	3361130005	Spacer	1	
10	3361130106	Control valve	1	
11	3361130002	Cylinder bush	1	
12	3361192005	O-ring, 104.14 x 5.33 mm	1	
13	3361192041	Wiper, 60 x 68 x 4 x 7 mm	1	
14	3361192039	Seal	1	
15	3361192040	O-ring, 66.04 x 5.33 mm	1	
16	3361192038	Seal, 60 x 75.5 x 6.3 mm	1	
17	3315332730	Piston	1	
18	3315296615	Seal, ø118 mm	1	
19	3315429505	Cylinder housing	1	
20	3115329002	Seal, SRC 8 x 14 x 2.4 mm	1	
21	3361130009	Wear bush	1	
22	3363087286	Filling valve complete	1	
23	0663925100	O-ring, 15.08x2.62	1	
24	3362264245	Filling valve	1	
25	3360478426	Threaded plug	1	
26	3361192067	O-ring	2	
27	3361031476	Fitting	2	
28	3361353486	Cap	2	
29	0544215300	Grease nipple, ISO 7-R 1/4	1	
30	3315429515	Retainer	1	
31	0663212006	O-ring, 26 x 6 mm	1	
33	3363066963	Plug, M14 x 1.5 mm	1	
34	3315431100	Screw	12	

Mechanical Tightening torques

Item	Part No.	Name	Qty	L
29	-	Grease nipple, 20 Nm	-	
34	-	Screw, 35 Nm/78 Nm, see "Assembly instruction"	-	
24	-	Filling valve, 130 Nm	-	
25	-	Threaded plug, 20 Nm	-	
27	-	Fitting, 90 Nm	-	
33	-	Plug, 30 Nm	-	

Mechanical Hydraulic breaker

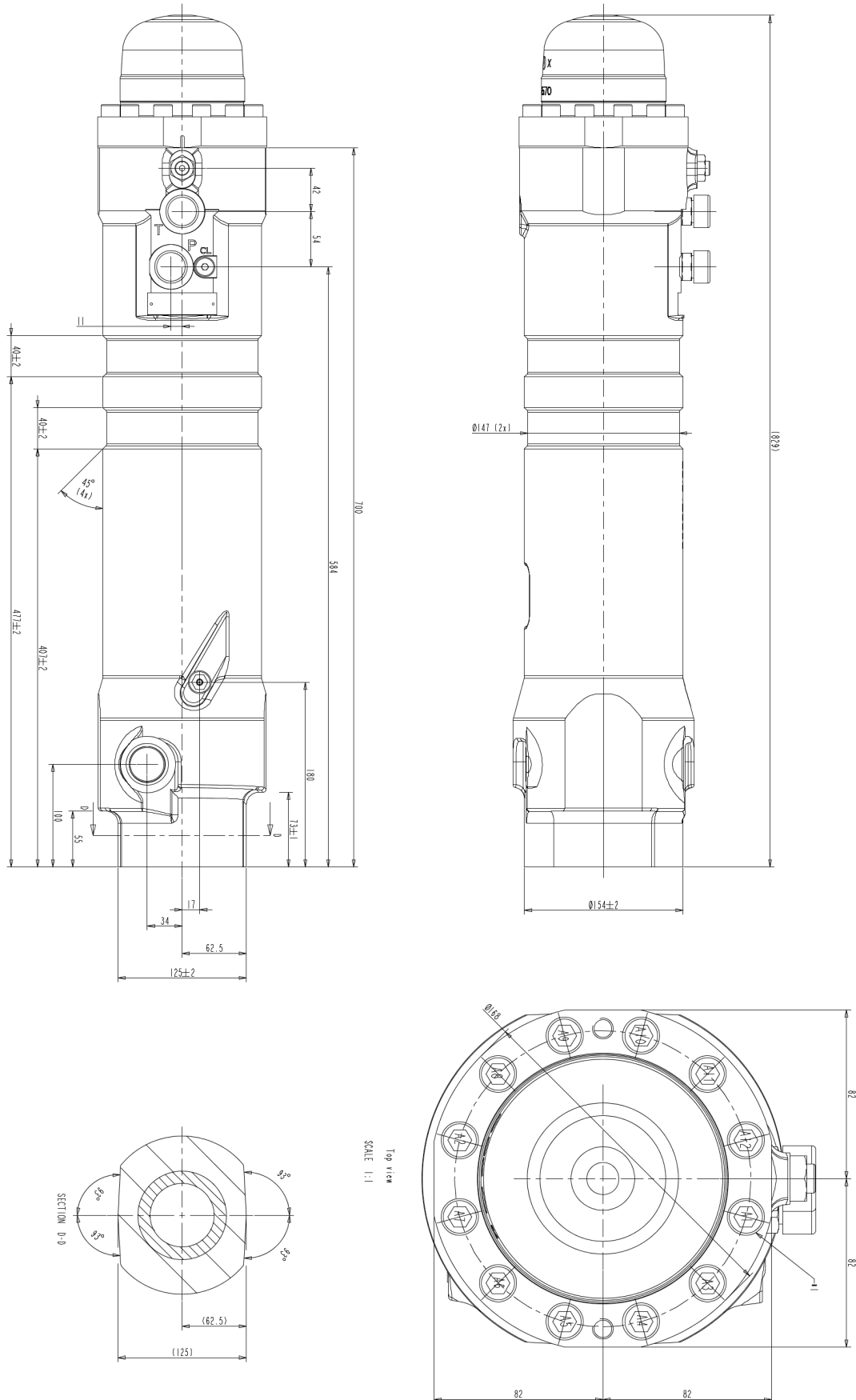
Item	Part No.	Name	Qty	L
1	3315289100	Breaker box	1	
2	3315431300	Shock absorber	1	
3	3315289800	Upper guiding	2	
4	3315289710	Lower guide	1	
5	3362430001	Shock absorber	1	
6	3362491007	Plug	1	
7	3362491004	Plug	4	
8	3362491006	Cover	1	
9	3315431400	Spacer	1	

Mechanical Assembly instruction

1. Make sure the spring plate (B) and spacer (C) are centered before mounting the back head (D).
 2. Press the back head (D) down on the spring plate (B) and spacer (C).
 3. Grease the screws (A) with Molykote® 1000 (Molykote is a registered trademark of Dow Corning Corporation), and manually fit them on the back head (D)
 4. Torque the first two screws (A) in the order shown in picture above to 35 Nm.
This will compress the spring plate (B), and fit the back head (D) into the cylinder housing (E).
Torque the rest of screws (A) in the order shown in picture above to 78 Nm.
- NOTICE Always start by fitting screws by hands.
- NOTICE Tighten in two stages.
- Stage 1: 35 Nm
- Stage 2: 78 Nm

This page intentionally left blank

Mechanical Dimension



Refer to the Parts Online web page for most up-to-date information. The printed information might be outdated.

This page intentionally left blank

Options/accessories Optional equipment

NO EXPLODED VIEW
AVAILABLE
FOR THIS BOM

Item	Part No.	Name	Qty	L
-	3363094913	Chisel paste cartridge for grease gun, 12 x 400 g (0.88 lbs)	1	A
-	0909107100	Grease gun for 400 g cartridge	1	
-	3363491004	Charging box with nitrogen cylinder, 2 l, 0.43 gal (0.53 US gal)	1	
-	3315303700	Test gauge wear bush	1	

Comments for Page: Optional equipment

(L)OCAL REMARKS

A | 400 g (0.88 lbs)

(carton of 12 pieces)

Options/accessories Hydraulic hoses

NO EXPLODED VIEW
AVAILABLE
FOR THIS BOM

Item	Part No.	Name	Qty	L
-	3363491002	Hose, both ends 18 L(M26x1.5) length 1500 mm	2	

Any unauthorized use or copying of the contents or any part thereof is prohibited.
This applies in particular to trademarks, model denominations, part numbers, and
drawings.

