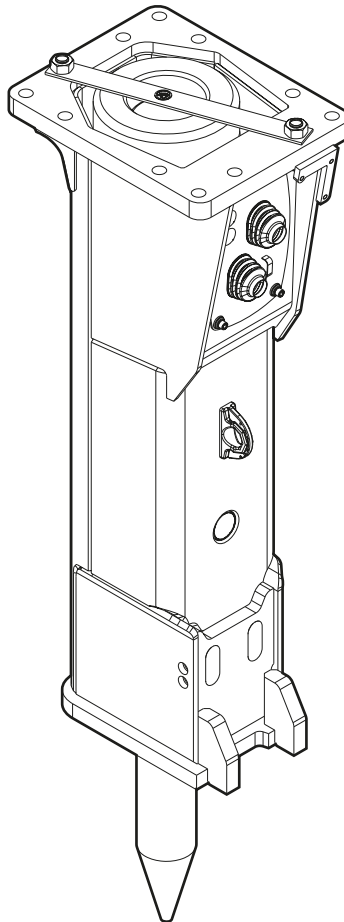


EC 135T

Spare parts list Hydraulic breakers

EC 135T s/n DEQ140734 - DEQ181204



General information

This spare parts list applies to the following:

Part number	Description
3363115609	Hydraulic breaker EC 135T

Use only authorized parts. Any damage or malfunction caused by the use of unauthorized parts is not covered by Warranty or Product Liability. Any unauthorized use or copying of the contents or any part thereof is prohibited. This applies in particular to trademarks, model denominations, part numbers, and drawings.

Instructions for use

This spare parts list contains no safety regulations and is merely intended to assist in the ordering of spare parts.

For information about operating, servicing, or repairing, the relevant Safety and operating instructions must be consulted at all costs.

Please observe the safety instructions listed in the relevant Safety and operating instructions!

Instructions for ordering

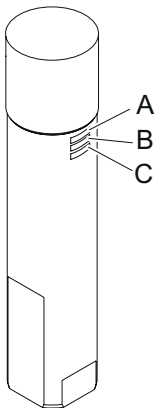
It is essential to indicate the serial number of the hydraulic attachment when ordering spare parts!

Please note the full identification number of your hydraulic attachment.

The code can be found on the main body.

Determine the quantity of individual parts which are required and need to be ordered. The order must indicate the following details:

- full identification code of the hydraulic attachment
- required quantity
- part number
- description



- A. Type
- B. Serial number
- C. Main body number

Service, repair and wear part kits

Label kit	1
Kit list	3

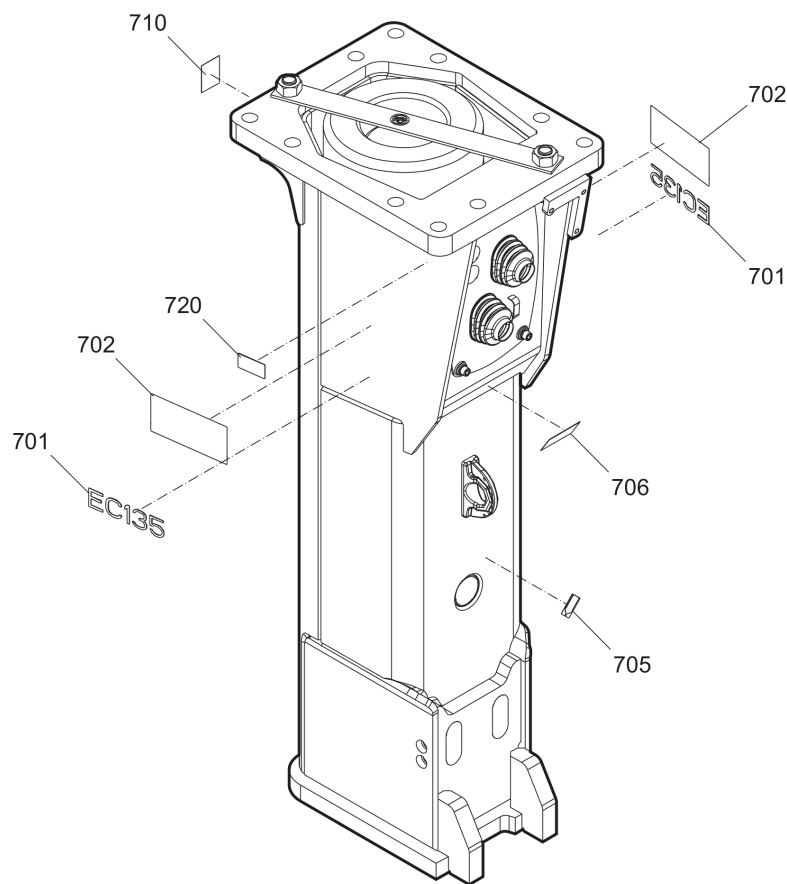
Mechanical

Hydraulic breaker	5
Percussion unit part 1: cover	7
Percussion unit part 2: main body complete	9
Tightening torques	11
Dimensions	13

Options / accessories

Hydraulic hoses	14
Optional equipment	17
Working tools	19

Service, repair and wear part kits Label kit



700				
701	702	705	706	710

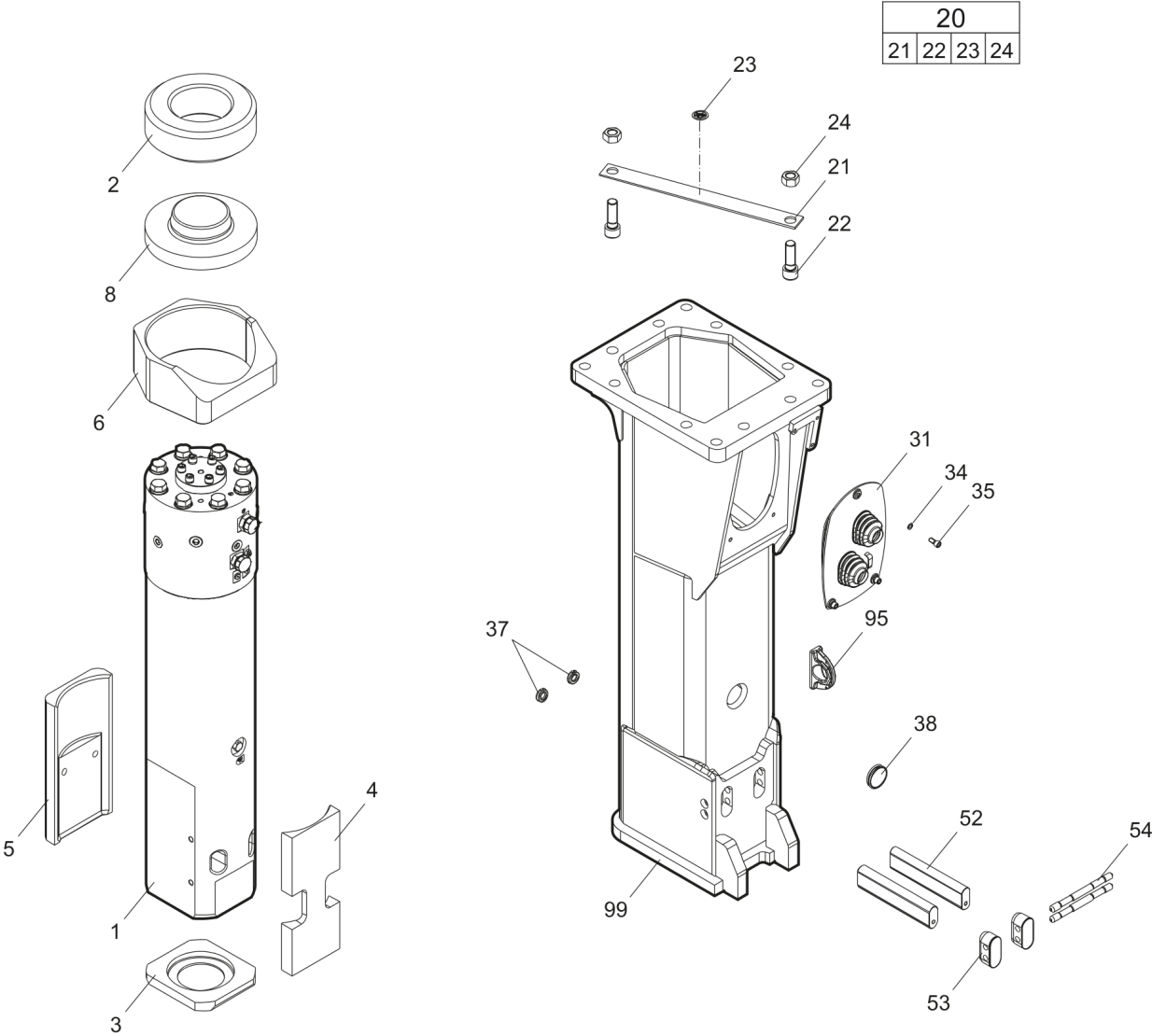
Item	Part No.	Name	Qty	L
700(701-710)	3363117024	Label kit EC 135T	1	
701		Product label "EC 135T"	2	
702		Label "Company"	2	
705		Label - Lubricating symbol	1	
706		Label - Gas pressure	1	
710		Sound power label	1	
720		Name plate - Consult the authorized Customer Center/Dealer in your area.	1	

Service, repair and wear part kits Kit list

NO EXPLODED VIEW
AVAILABLE
FOR THIS BOM

Item	Part No.	Name	Qty	L
KIT	3363110085	Seal kit	1	
101	3361031951	O-ring	1	
107	3363098702	O-ring	1	
160	3360314551	O-ring	2	
182	3360478426	Threaded plug	1	
183	3360175125	O-ring	1	
203	3363098700	Seal	1	
204	3363110027	Seal	1	
291	3363102141	Seal	1	
292	3363102143	Back-up ring	1	
305	3363098705	Wiper	1	
306	3363110029	Stirromatic	8	
307	3362267582	Stirromatic	1	
308	3362267583	Stirromatic	1	
391	3363102145	Seal	1	
392	3363102147	Back-up ring	1	

Mechanical Hydraulic breaker



Item	Part No.	Name	Qty	L
1		Percussion unit	1	A
2	3363105141	Elastic pad	1	
3	3363114783	Shock absorber	1	
4	3363115013	Guide plate	1	
5	3363115908	Guide plate	1	
6	3363115909	Guide ring	1	
8	3363105995	Cap	1	
20(21-24)	3363083416	Transport safety device complete	1	
21		Transport safety device	1	
22	3360026883	Allen screw	2	
23	3363091872	Label transport safety device	1	
24	3360103254	Nut	2	
31	3363115916	Cover	1	
34	3361850596	Pair of lock washers	3	
35	3360103750	Allen screw	3	
37	3362267897	Plug	2	
38	3362267893	Plug	1	
52	3363114768	Retainer bar	2	
53	3363114673	Plug	2	
54	3363114778	Bolt	2	
95	3363111994	Lifting eye	1	B
99	3363115898	Breaker box	1	C

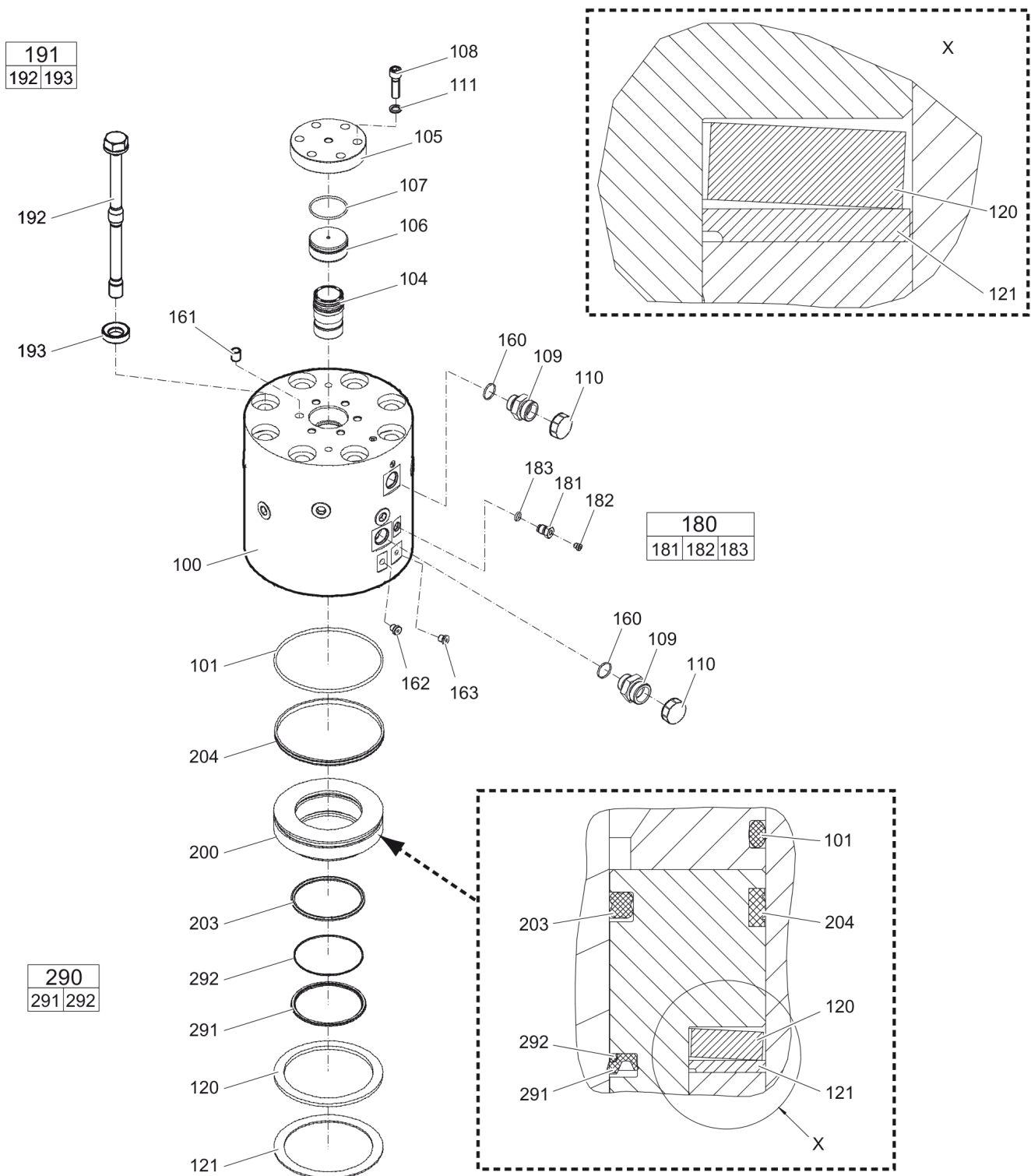
Comments for Page: Hydraulic breaker

(L)OCAL REMARKS

A | see separate chapter

B | professional welding process necessary

C | with item 95

Mechanical Percussion unit part 1: cover

Item	Part No.	Name	Qty	L
100	3363110017	Cover	1	A
101	3361031951	O-ring	1	
104	3363109459	Main control valve	1	
105	3363109465	Cover	1	
106	3363102115	Cover	1	
107	3363098702	O-ring	1	
108	3363083725	Allen screw	6	
109	3360995665	Fitting	2	B
110	3361353488	Protective cap	2	
111	3361333703	Pair of lock washers	6	
120	3363110016	Plate spring	1	
121	3363109471	Disk	1	C
160	3360314551	O-ring	2	
161	3361031915	Threaded insert	6	
162	3363066963	Plug, M14 x 1.5 mm	1	
163	3360478439	Threaded plug	1	
180(181-183)	3363087286	Filling valve complete	1	
181		Filling valve	1	
182	3360478426	Threaded plug	1	
183	3360175125	O-ring	1	
191(192-193)	3363110084	Bolt complete	8	
192		Bolt	1	
193	3363109463	Washer	1	
200	3363109461	Seal bush	1	
203	3363098700	Seal	1	
204	3363110027	Seal	1	
290(291-292)	3363103152	Seal kit	1	
291		Seal	1	
292		Back-up ring	1	

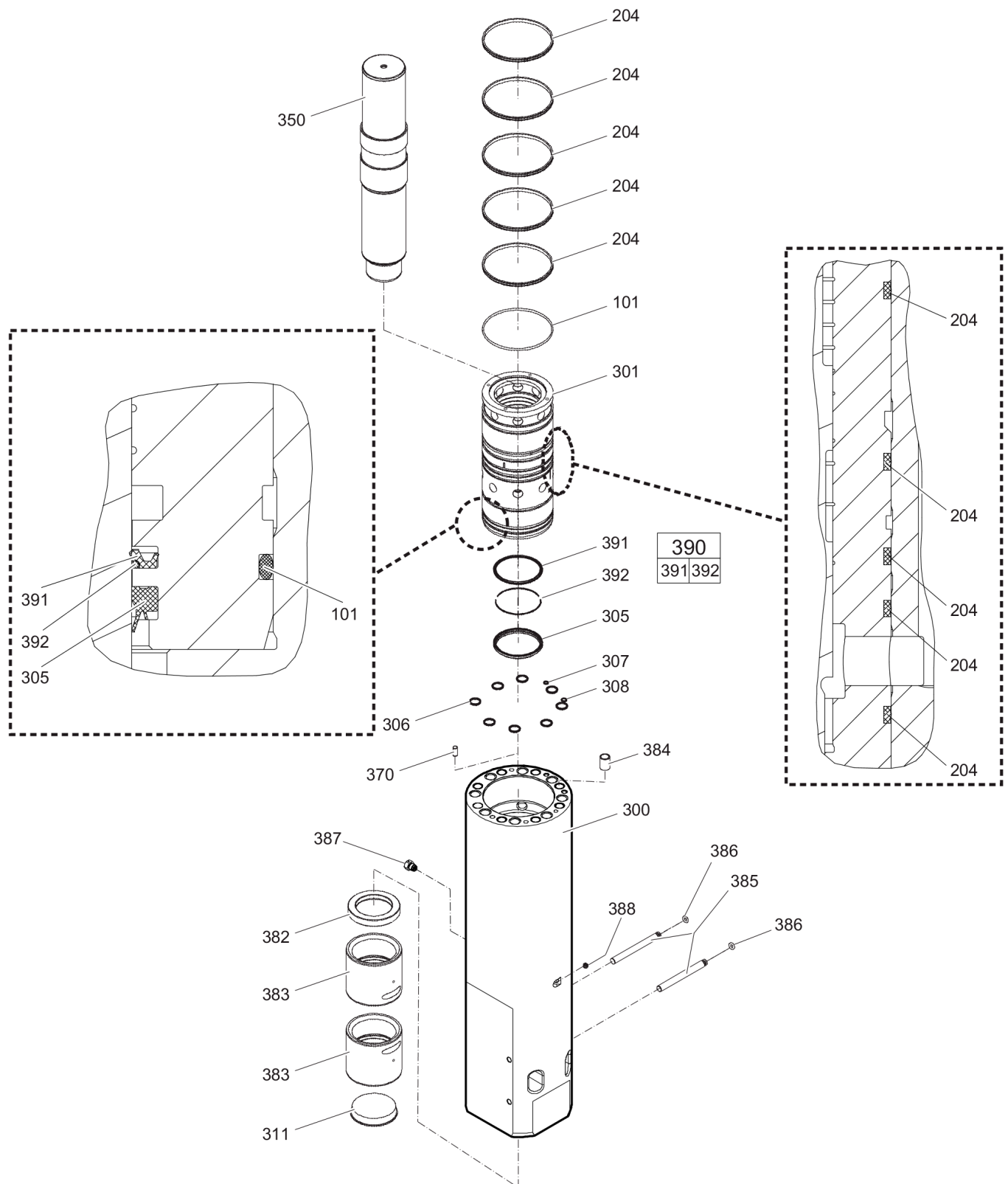
Comments for Page: Percussion unit part 1: cover

(L)OCAL REMARKS

A | with item 161 - 163

B | with item 160

C | observe mounting direction

Mechanical Percussion unit part 2: main body complete

Refer to Parts Online for the most up to date information. The printed information might be outdated.

Wed Nov 08 09:34:45 UTC 2017

Item	Part No.	Name	Qty	L
101	3361031951	O-ring	1	
204	3363110027	Seal	5	
300	3363114923	Main body	1	A
301	3363111447	Cylinder bush	1	
305	3363098705	Wiper	1	
306	3363110029	Stirromatic	8	
307	3362267582	Stirromatic	1	
308	3362267583	Stirromatic	1	
311	3360995339	Protective cap	1	
350	3363110020	Percussion piston	1	
370	3360106784	Parallel pin 14X28	1	
382	3363109467	Impact ring	1	
383	3363109469	Wear bush	2	
384	3363083574	Threaded insert	8	
385	3363109457	Bolt	2	
386	3363110076	O-ring	2	
387	3363109435	Non return valve, G1/2 in.	1	
388	3360433774	Grease nipple	1	
390(391-392)	3363103153	Seal kit	1	
391		Seal	1	
392		Back-up ring	1	

Comments for Page: Percussion unit part 2: main body complete

(L)OCAL REMARKS

A | with item 382 - 388

Mechanical Tightening torques

NO EXPLODED VIEW
AVAILABLE
FOR THIS BOM

Item	Part No.	Name	Qty	L
35	-	Allen screw - 10 Nm		A
108	-	Allen screw - 200 Nm		B
109	-	Fitting - 330 Nm		C
181	-	Filling valve - 130 Nm		D
182	-	Threaded plug - 20 Nm		E
192	-	Bolt		F
387	-	Non-return valve - 200 Nm		G

Comments for Page: Tightening torques

(L)OCAL REMARKS

A | Allen key size 10

B | Allen key size 14

C | Open-end wrench size 46

D | Socket spanner size 22

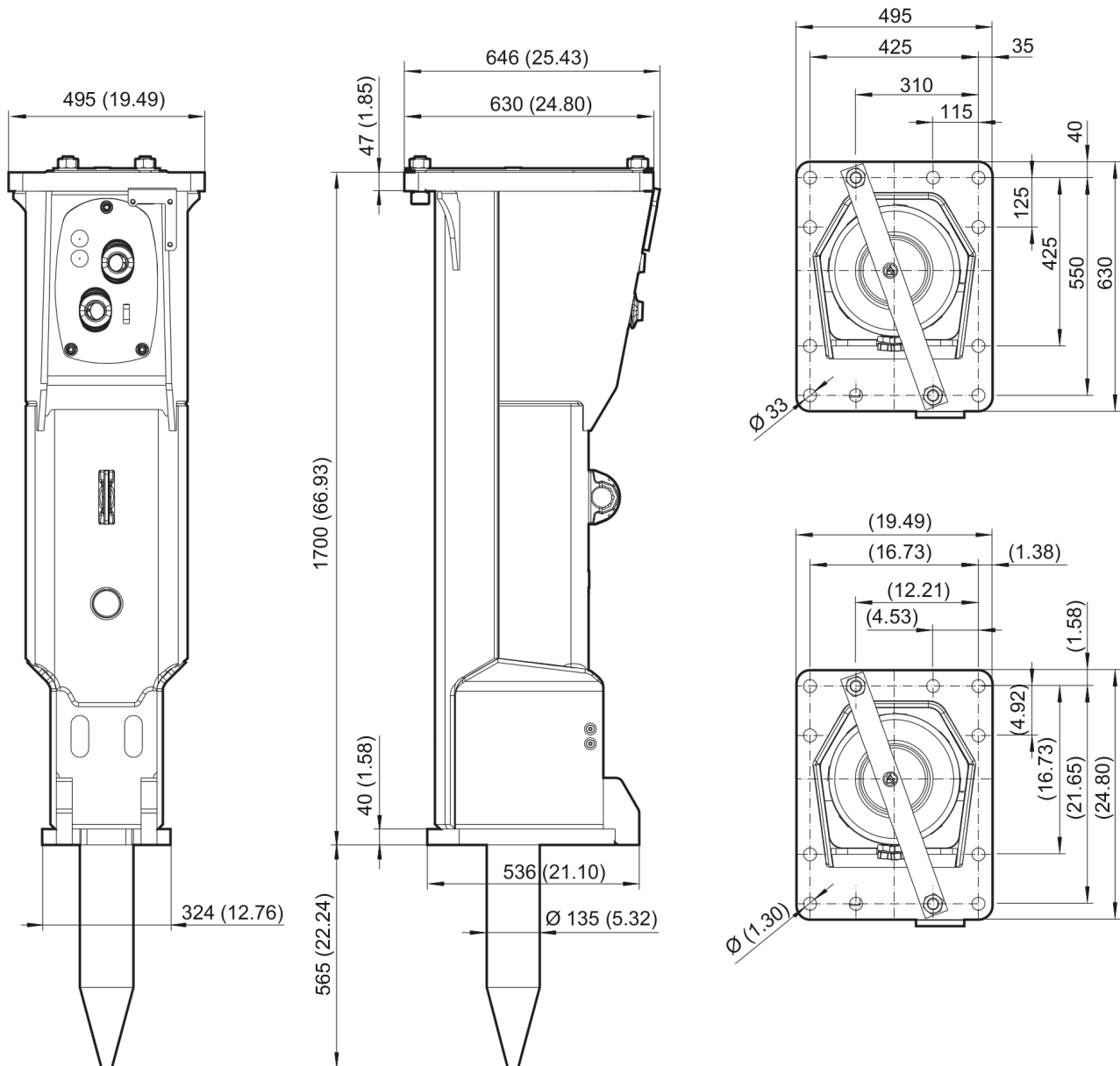
E | Allen key size 5

F | Torque wrench or Power wrench size 41

1. Pretighten the bolts to 100 Nm, proceeding in a crosswise fashion,
2. again pretighten the bolts to 100 Nm, proceeding in a crosswise fashion,
3. then tighten each bolt through 60° (1 sides of hexagonal head) in a crosswise fashion,
4. finally tighten each bolt again through 90° (1 ½ sides of hexagonal head) in a crosswise fashion.

G | Socket wrench size 27

Mechanical Dimensions



Refer to Parts Online for the most up to date information. The printed information might be outdated.

Wed Nov 08 09:34:46 UTC 2017

This page intentionally left blank

Options / accessories Hydraulic hoses

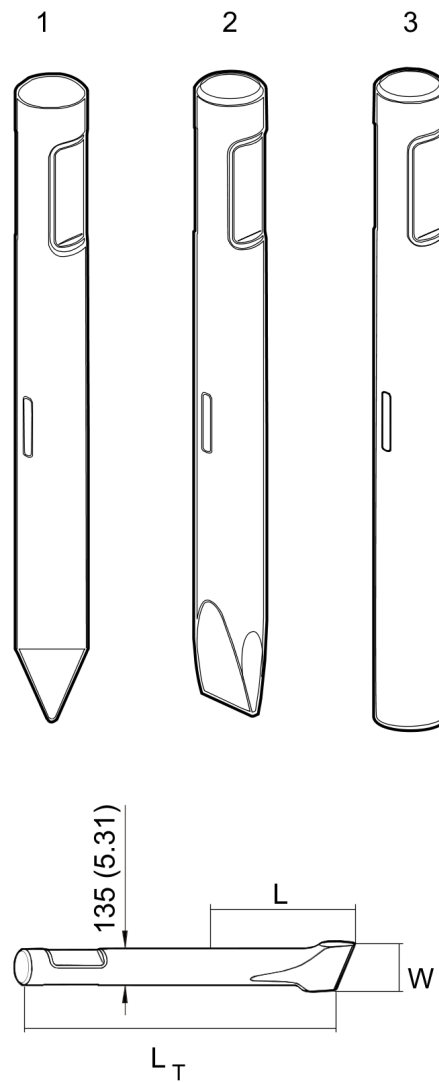
NO EXPLODED VIEW
AVAILABLE
FOR THIS BOM

Item	Part No.	Name	Qty	L
-	3360992340	Hydraulic hose, I.D. 25 (1"), both ends M42 x 2 conical seal 24°, length 2300 mm (91 in.)	2	
-	3363115797	Hydraulic hose, I.D. 25 (1"), both ends M42 x 2 conical seal 24°, length 2600 mm (102 in.)	2	
-	3361853859	Hydraulic hose, I.D. 25 (1"), both ends M42 x 2 conical seal 24°, length 2800 mm (110 in.)	2	

Options / accessories Optional equipment

NO EXPLODED VIEW
AVAILABLE
FOR THIS BOM

Item	Part No.	Name	Qty	L
-	3363091200	Chisel paste cartridge, 12 x 500 g (1.1 lbs)	1	
-	3363034567	Grease gun for 500 g cartridge	1	
-	3363089844	Maintenance and charging box with nitrogen cylinder, 2 l, 0.43 gal (0.53 US gal)	1	
-	3363094940	Maintenance and charging box without nitrogen cylinder	1	
-	3361852169	Test gauge lower wear bush	1	
-	3363094952	Inside callipers upper wear bush	1	
-		Adapter plate matching the carrier. Consult the authorized Customer Center/Dealer in your area.	1	
-	3363099797	Base plate with threaded inserts	1	
-	3363094537	Bolt kit	1	
-	3363100697	Base plate with through borings	1	
-	3363094575	Bolt kit	1	
-	3360209253	Allen key (19 mm)	1	

Options / accessories Working tools

Item	Part No.	Name	Qty	L
1	3363115937	Moil point		A
2	3363115938	Chisel (cross)		B
3	3363115939	Blunt tool		C

Comments for Page: Working tools

(L)OCAL REMARKS

A | L = 565 mm, LT = 1050 mm, Wt = 101.5 kg

L = 22.44 inch, LT = 41.34 inch, Wt = 223.8 lb

B | L = 565 mm, LT = 1050 mm, Wt = 107.8 kg

L = 22.44 inch, LT = 41.34 inch, Wt = 237.7 lb

C | L = 565 mm, LT = 1050 mm, Wt = 115.1 kg

L = 22.44 inch, LT = 41.34 inch, Wt = 253.8 lb

Any unauthorized use or copying of the contents or any part thereof is prohibited.
This applies in particular to trademarks, model denominations, part numbers, and drawings.