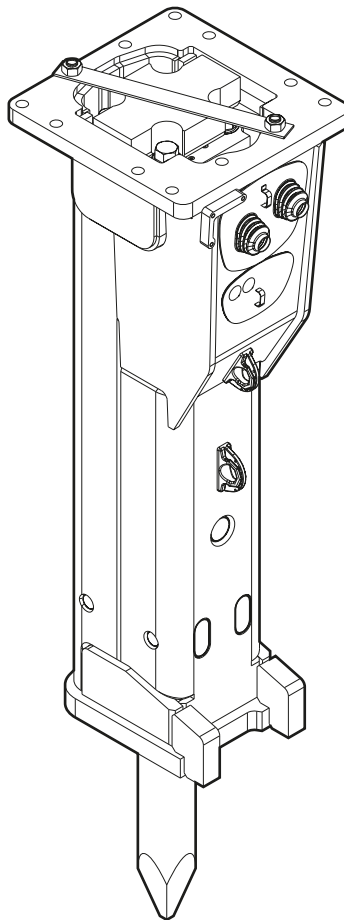


# EC 150T

---

## Spare parts list Hydraulic breakers

EC 150T s/n DEQ140896 - DEQ151617



# General information

This spare parts list applies to the following:

| Part number | Description               |
|-------------|---------------------------|
| 3363115611  | Hydraulic breaker EC 150T |

Use only authorized parts. Any damage or malfunction caused by the use of unauthorized parts is not covered by Warranty or Product Liability. Any unauthorized use or copying of the contents or any part thereof is prohibited. This applies in particular to trademarks, model denominations, part numbers, and drawings.

## Instructions for use

This spare parts list contains no safety regulations and is merely intended to assist in the ordering of spare parts.

For information about operating, servicing, or repairing, the relevant Safety and operating instructions must be consulted at all costs.

Please observe the safety instructions listed in the relevant Safety and operating instructions!

## Instructions for ordering

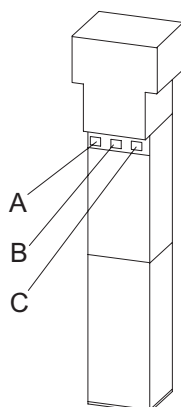
It is essential to indicate the serial number of the hydraulic attachment when ordering spare parts!

Please note the full identification number of your hydraulic attachment.

The code can be found on the cylinder.

Determine the quantity of individual parts which are required and need to be ordered. The order must indicate the following details:

- full identification code of the hydraulic attachment
- required quantity
- part number
- description



A. Cylinder number

B. Type

C. Serial number

## Contents

### Service, repair and wear part kits

|           |   |
|-----------|---|
| Label kit | 1 |
| Kit list  | 3 |

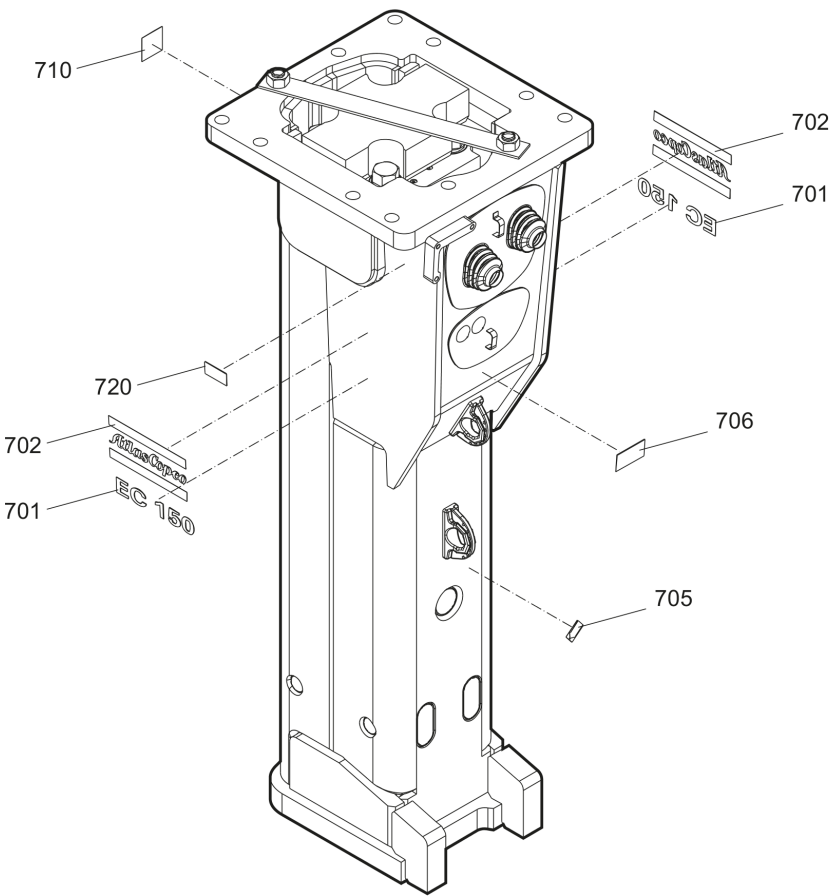
### Mechanical

|  |    |
|--|----|
| Hydraulic breaker                          | 5  |
| Percussion unit part 1: cylinder cover     | 7  |
| Percussion unit part 2: cylinder           | 10 |
| Percussion unit part 3: lower breaker part | 13 |
| Tightening torques                         | 15 |
| Dimensions                                 | 17 |

### Options / accessories

|                    |    |
|--------------------|----|
| Hydraulic hoses    | 18 |
| Optional equipment | 21 |
| Working tools      | 23 |

Service, repair and wear part kits    Label kit



| 700 |     |     |     |     |
|-----|-----|-----|-----|-----|
| 701 | 702 | 705 | 706 | 710 |

| Item         | Part No.   | Name  | Qty | L |
|--------------|------------|---|-----|---|
| 700(701-710) | 3363117053 | Label kit EC 150T   | 1   |   |
| 701          |            | Product label "EC 150T"   | 2   |   |
| 702          |            | Product label "Atlas Copco"   | 2   |   |
| 705          |            | Lubricating symbol  | 1   |   |
| 706          |            | Label gas pressure  | 1   |   |
| 710          |            | Sound power label   | 1   |   |
| 720          |            | Name plate - Consult the Atlas Copco Customer Center/Dealer in your area. | 1   |   |

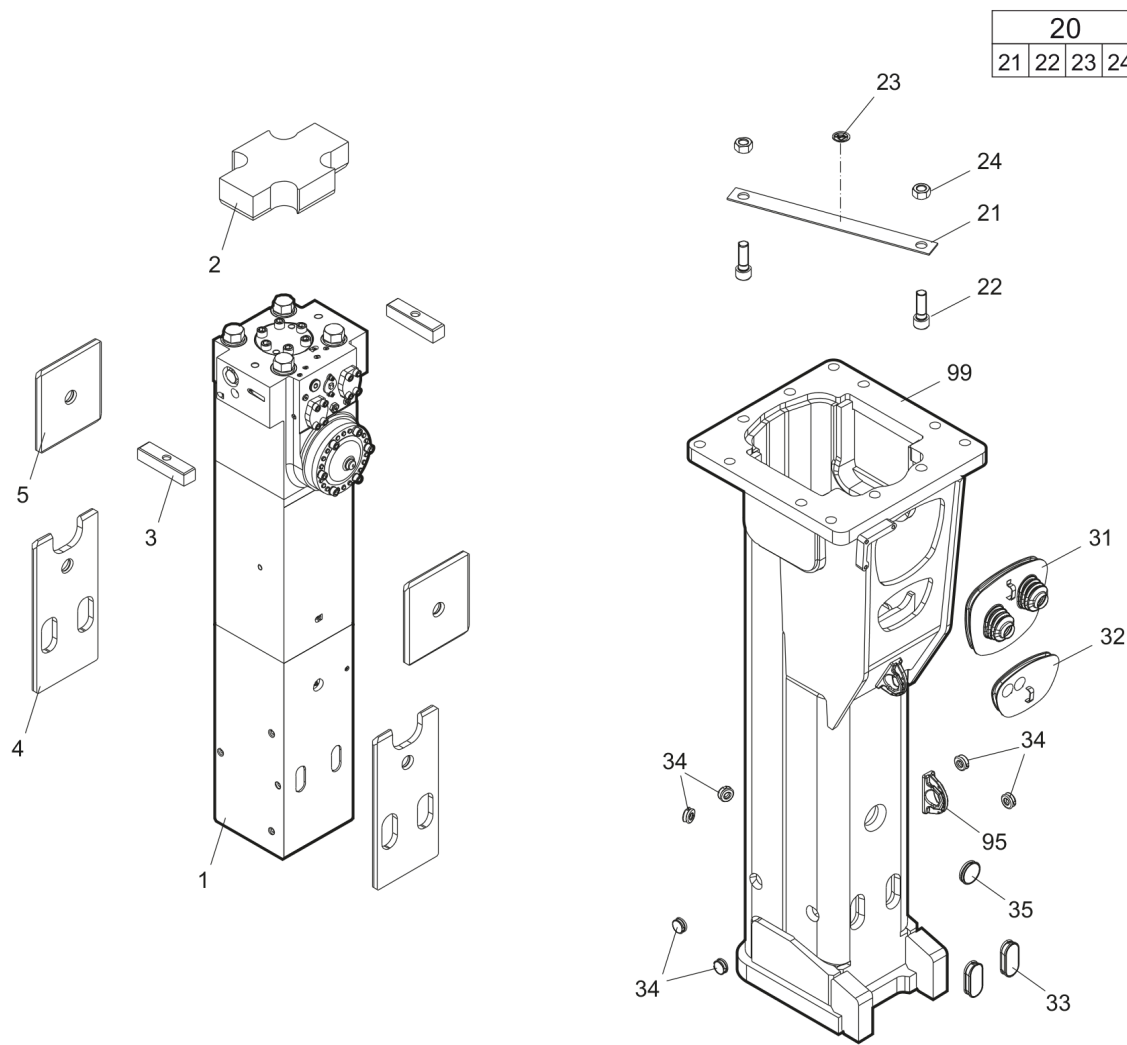
---

**Service, repair and wear part kits** Kit list

NO EXPLODED VIEW  
AVAILABLE  
FOR THIS BOM

| Item | Part No.   | Name                   | Qty | L |
|------|------------|------------------------|-----|---|
| KIT  | 3363112842 | Seal kit               | 1   |   |
| 103  | 3360314375 | O-ring                 | 1   |   |
| 131  | 3360314372 | O-ring                 | 2   |   |
| 164  | 3361031912 | O-ring                 | 1   |   |
| 165  | 3361850529 | Back-up ring           | 1   |   |
| 166  | 3361031990 | O-ring                 | 1   |   |
| 182  | 3360478426 | Threaded plug          | 1   |   |
| 183  | 3360175125 | O-ring                 | 1   |   |
| 194  | 3363112659 | O-ring                 | 1   |   |
| 195  | 3360314656 | O-ring                 | 1   |   |
| 201  | 3361855099 | Seal                   | 1   |   |
| 204  | 3363112705 | Seal                   | 1   |   |
| 291  |            | Back-up ring           | 1   |   |
| 292  |            | Seal                   | 1   |   |
| 301  | 3361031950 | O-ring                 | 1   |   |
| 302  | 3363083669 | Wiper                  | 1   |   |
| 305  | 3362267281 | Seal                   | 8   |   |
| 306  | 3362267585 | Seal                   | 5   |   |
| 307  | 3362267582 | Seal                   | 2   |   |
| 391  |            | Seal                   | 1   |   |
| 392  |            | Back-up ring           | 1   |   |
| 411  | 3360478097 | O-ring                 | 1   |   |
| KIT  | 3363098088 | Fastening screw kit    | 1   |   |
| 161  | 3363070490 | Fastening screw        | 6   |   |
| 163  | 3361333703 | Lock washer            | 6   |   |
| 172  | 3361031989 | Threaded insert        | 6   |   |
| KIT  | 3363089849 | Accumulator repair kit | 1   |   |
| -    | 3362261647 | Diaphragm              | 1   |   |
| -    | 3360332259 | Filling screw          | 1   |   |
| -    | 3360314460 | O-ring                 | 1   |   |
| -    | 3361335025 | Protective cap         | 1   |   |
| -    | 3361031912 | O-ring                 | 1   |   |
| -    | 3361850529 | Back-up ring           | 1   |   |

**Mechanical** Hydraulic breaker



| Item      | Part No.   | Name                             | Qty | L |
|-----------|------------|----------------------------------|-----|---|
| 1         |            | Percussion unit                  | 1   | A |
| 2         | 3363105835 | Elastic pad                      | 1   |   |
| 3         | 3363105837 | Shock absorber                   | 2   |   |
| 4         | 3363115362 | Guide plate                      | 2   |   |
| 5         | 3363115363 | Guide plate                      | 2   |   |
| 20(21-24) | 3363083343 | Transport safety device complete | 1   |   |
| 21        |            | Transport safety device          | 1   |   |
| 22        | 3360026883 | Allen screw                      | 2   |   |
| 23        | 3363091872 | Label transport safety device    | 1   |   |
| 24        | 3360103254 | Nut                              | 2   |   |
| 31        | 3363116067 | Cover                            | 1   |   |
| 32        | 3363116113 | Cover                            | 1   |   |
| 33        | 3363086011 | Plug                             | 2   |   |
| 34        | 3363086015 | Plug                             | 6   |   |
| 35        | 3362267893 | Plug                             | 1   |   |
| 95        | 3363111994 | Lifting eye                      | 2   | B |
| 99        | 3363116075 | Breaker box                      | 1   | C |

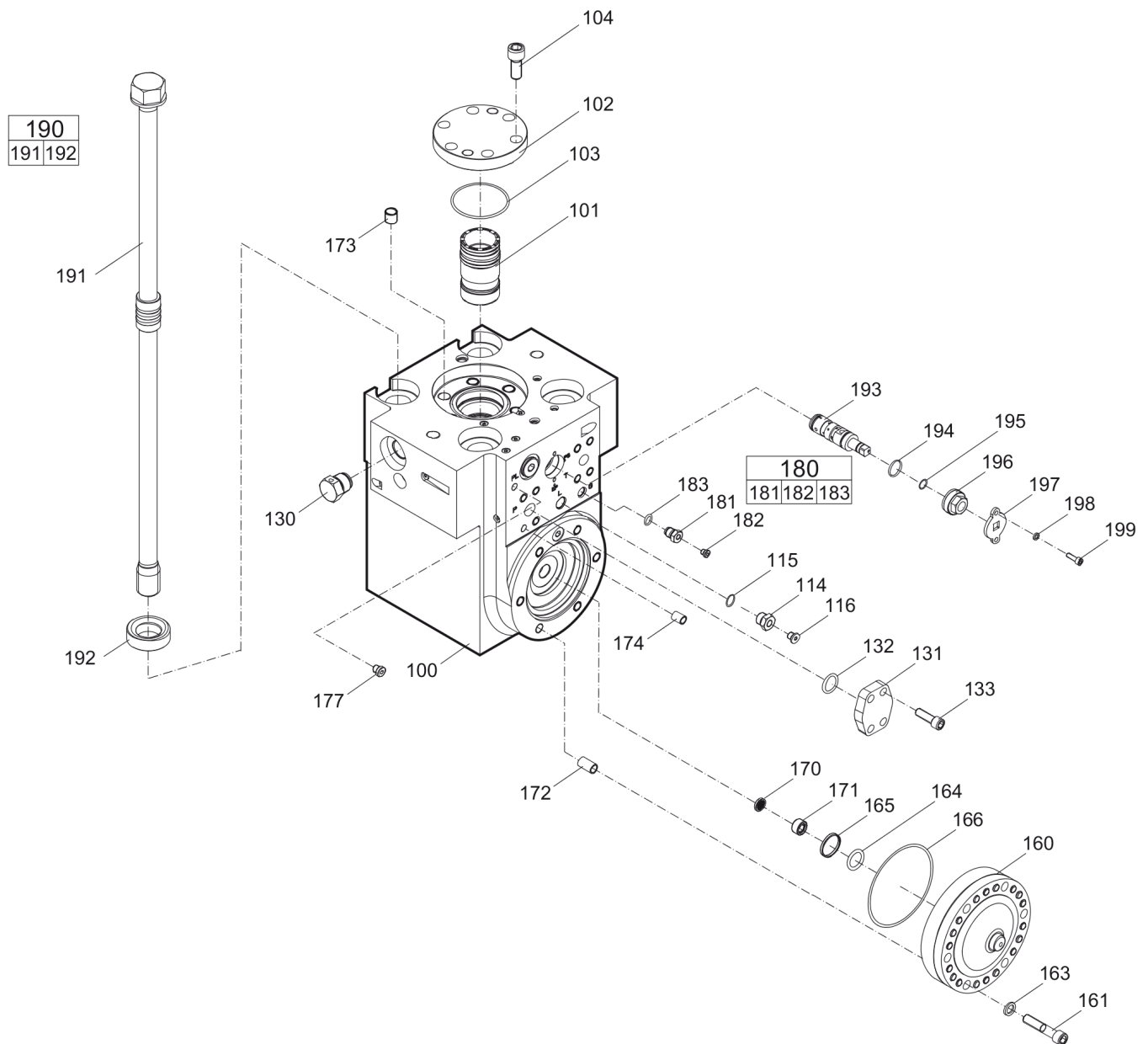
Comments for Page: Hydraulic breaker

(L)OCAL REMARKS

A | see separate chapter

B | professional welding process necessary

C | with item 95

**Mechanical** Percussion unit part 1: cylinder cover

Refer to Parts Online for the most up to date information. The printed information might be outdated.

Tue Aug 11 03:26:09 MDT 2015

| Item         | Part No.   | Name                     | Qty | L |
|--------------|------------|--------------------------|-----|---|
| 100          | 3363112739 | Cylinder cover           | 1   | A |
| 101          | 3363035439 | Main control valve       | 1   |   |
| 102          | 3361331555 | Cover                    | 1   |   |
| 103          | 3360314375 | O-ring                   | 1   |   |
| 104          | 3360103776 | Allen screw              | 6   |   |
| 114          | 3361854657 | Connecting screw         | 1   |   |
| 115          | 3360478171 | O-ring                   | 1   |   |
| 116          | 3360478439 | Threaded plug            | 1   |   |
| 130          | 3361854511 | Non-return valve         | 1   |   |
| 131          | 3363034041 | Blind flange             | 2   |   |
| 132          | 3360314372 | O-ring                   | 2   |   |
| 133          | 3363034274 | Allen screw              | 8   |   |
| 160          | 3363069585 | HP-accumulator           | 1   |   |
| 161          | 3363070490 | Fastening screw          | 6   |   |
| 163          | 3361333703 | Lock washer              | 6   |   |
| 164          | 3361031912 | O-ring                   | 1   |   |
| 165          | 3361850529 | Back-up ring             | 1   |   |
| 166          | 3361031990 | O-ring                   | 1   |   |
| 170          | 3361844113 | Strainer disk            | 1   |   |
| 171          | 3361844115 | Threaded plug            | 1   |   |
| 172          | 3361031989 | Threaded insert          | 6   |   |
| 173          | 3361031529 | Threaded insert          | 6   |   |
| 174          | 3361031946 | Threaded insert          | 8   |   |
| 177          | 3363066963 | Plug, M14 x 1.5 mm       | 1   |   |
| 180(181-183) | 3363087286 | Filling valve complete   | 1   |   |
| 181          |            | Filling valve            | 1   |   |
| 182          | 3360478426 | Threaded plug            | 1   |   |
| 183          | 3360175125 | O-ring                   | 1   |   |
| 190(191-192) | 3363106905 | Tensioning bolt complete | 4   |   |
| 191          |            | Tensioning bolt          | 1   |   |
| 192          | 3363093649 | Washer                   | 1   |   |
| 193          | 3363113244 | Valve                    | 1   | B |
| 194          | 3363112659 | O-ring                   | 1   |   |
| 195          | 3360314656 | O-ring                   | 1   |   |
| 196          | 3363113246 | Threaded plug            | 1   |   |
| 197          | 3363113243 | Plate                    | 1   |   |
| 198          | 3361850743 | Pair of lock washers     | 2   |   |

Refer to Parts Online for the most up to date information. The printed information might be outdated.

Tue Aug 11 03:26:09 MDT 2015

| Item | Part No.   | Name        | Qty | L |
|------|------------|-------------|-----|---|
| 199  | 3360103735 | Allen screw | 2   |   |

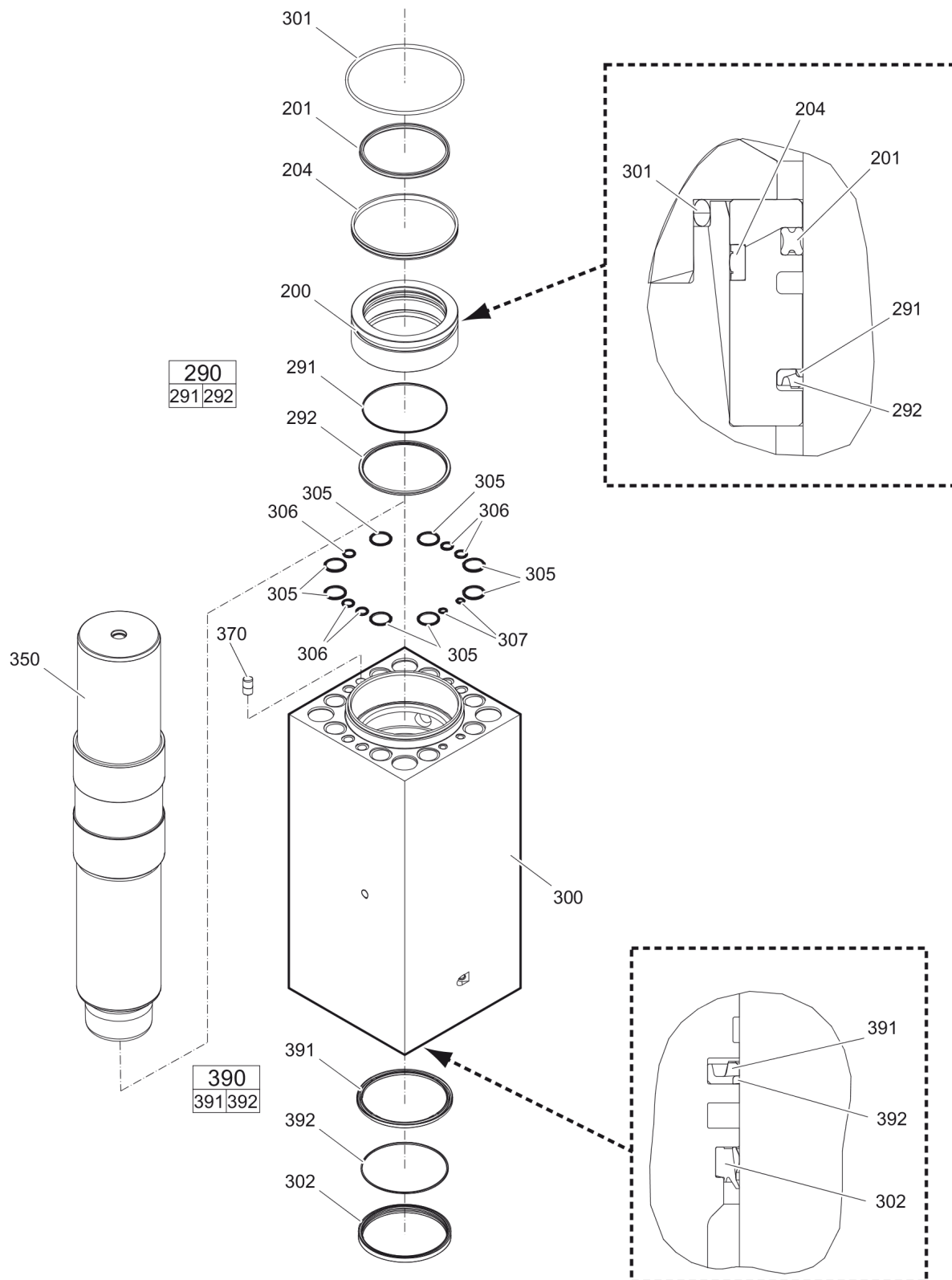
Comments for Page: Percussion unit part 1: cylinder cover

(L)OCAL REMARKS

A | with item 114 - 116 and 170 - 177

B | Stroke control

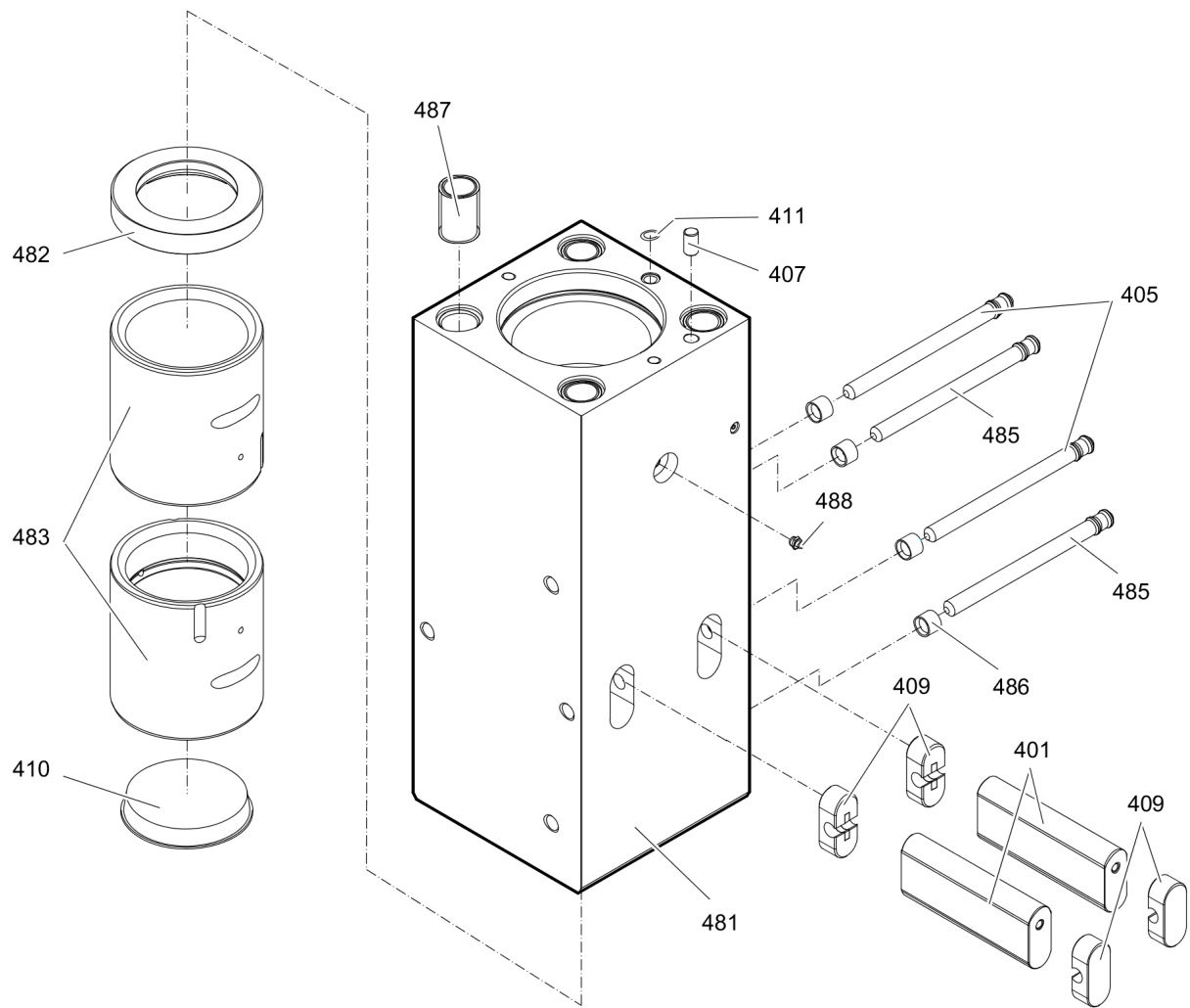
This page intentionally left blank

**Mechanical** Percussion unit part 2: cylinder

| Item         | Part No.   | Name              | Qty | L |
|--------------|------------|-------------------|-----|---|
| 200          | 3363112392 | Seal flange       | 1   |   |
| 201          | 3361855099 | Seal              | 1   |   |
| 204          | 3363112705 | Seal              | 1   |   |
| 290(291-292) | 3363083589 | Seal kit          | 1   |   |
| 291          |            | Back-up ring      | 1   |   |
| 292          |            | Seal              | 1   |   |
| 300          | 3363112528 | Cylinder          | 1   |   |
| 301          | 3361031950 | O-ring            | 1   |   |
| 302          | 3363083669 | Wiper             | 1   |   |
| 305          | 3362267281 | Seal              | 8   |   |
| 306          | 3362267585 | Seal              | 5   |   |
| 307          | 3362267582 | Seal              | 2   |   |
| 350          | 3363112401 | Percussion piston | 1   |   |
| 370          | 3362268185 | Lock pin          | 1   |   |
| 390(391-392) | 3363083590 | Seal kit          | 1   |   |
| 391          |            | Seal              | 1   |   |
| 392          |            | Back-up ring      | 1   |   |

**Mechanical** Percussion unit part 3: lower breaker part

| 480 |     |     |     |     |     |     |
|-----|-----|-----|-----|-----|-----|-----|
| 481 | 482 | 483 | 485 | 486 | 487 | 488 |



| Item         | Part No.   | Name                        | Qty | L |
|--------------|------------|-----------------------------|-----|---|
| 401          | 3360981927 | Retainer bar                | 2   |   |
| 405          | 3361854347 | Bolt                        | 2   |   |
| 407          | 3362261705 | Lock pin                    | 1   |   |
| 409          | 3362262925 | Plug                        | 4   |   |
| 410          | 3360995340 | Protective cap              | 1   |   |
| 411          | 3360478097 | O-ring                      | 1   |   |
| 480(481-488) | 3363106627 | Lower breaker part complete | 1   |   |
| 481          |            | Lower breaker part          | 1   |   |
| 482          | 3363069079 | Impact ring                 | 1   |   |
| 483          | 3363105553 | Wear bush                   | 2   |   |
| 485          | 3361854347 | Bolt                        | 2   |   |
| 486          | 3361854363 | Locking bush                | 4   |   |
| 487          | 3363085379 | Threaded insert             | 4   |   |
| 488          | 3360433774 | Grease nipple               | 1   |   |

---

**Mechanical** Tightening torques

NO EXPLODED VIEW  
AVAILABLE  
FOR THIS BOM

| Item | Part No. | Name                      | Qty | L |
|------|----------|---------------------------|-----|---|
| 22   | -        | Allen screw - 240 Nm      |     | A |
| 24   | -        | Nut - 240 Nm              |     | B |
| 104  | -        | Allen screw - 380 Nm      |     | C |
| 130  | -        | Non-return valve - 200 Nm |     | D |
| 133  | -        | Allen screw - 130 Nm      |     | E |
| 161  | -        | Allen screw - 350 Nm      |     | F |
| 181  | -        | Filling valve - 130 Nm    |     | G |
| 182  | -        | Threaded plug - 20 Nm     |     | H |
| 191  | -        | Tensioning bolt           |     | I |
| 196  | -        | Threaded plug - 300 Nm    |     | J |
| 199  | -        | Allen screw - 20 Nm       |     | K |

Comments for Page: Tightening torques

(L)OCAL REMARKS

A | Allen key size 22

B | Socket spanner size 46

C | Allen key size 17

D | Socket spanner size 41

E | Allen key size 12

F | Allen key size 14

G | Socket spanner size 22

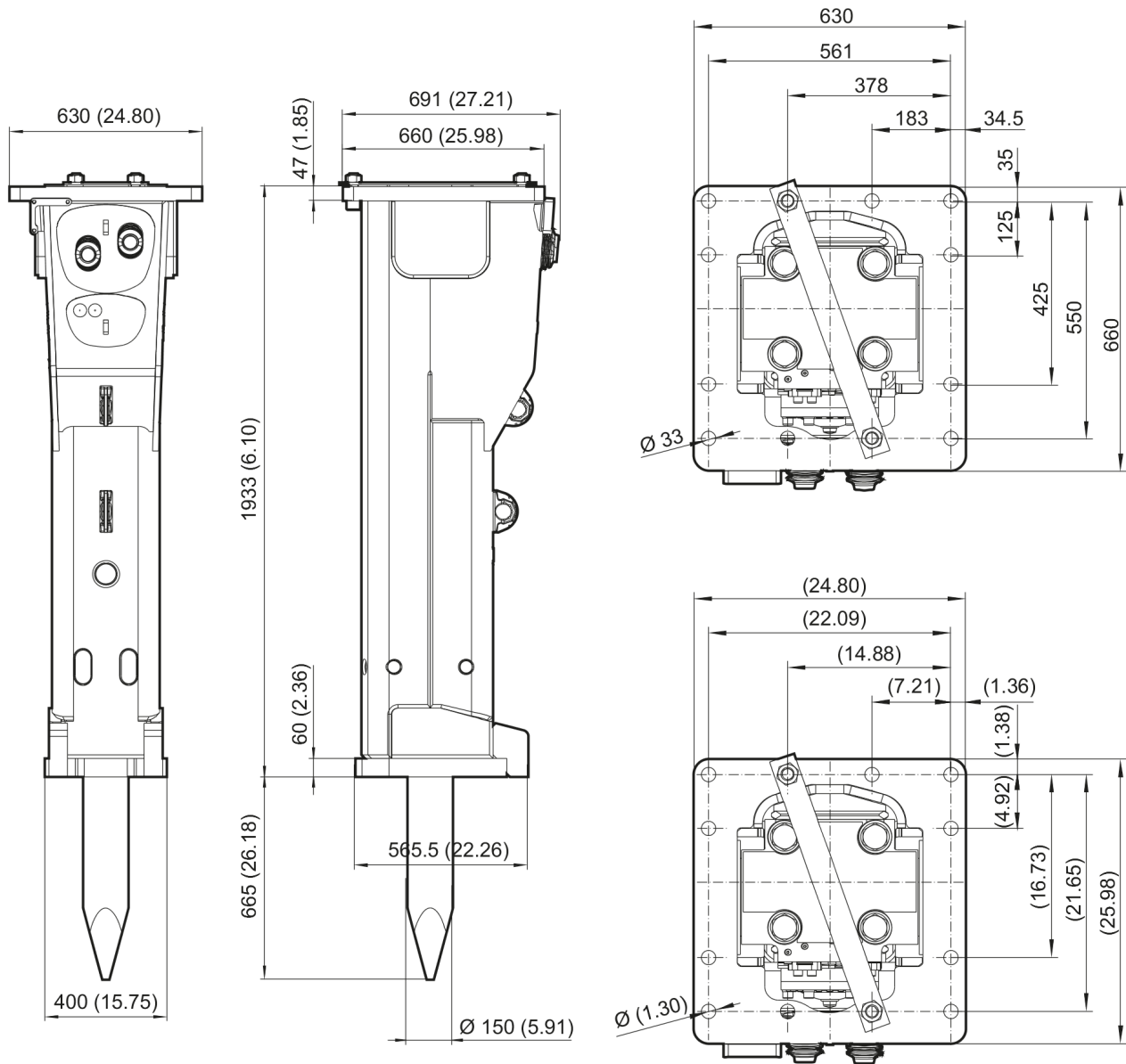
H | Allen key size 5

I | Torque wrench or Power wrench size 55

1. Pretighten the tensioning bolts to 500 Nm, proceeding in a crosswise fashion,
2. then tighten each tensioning bolt through 120° (2 sides of hexagonal head) in a crosswise fashion,
3. finally tighten each tensioning bolt again through 120° (2 sides of hexagonal head) in a crosswise fashion.

J | Socket spanner size 30

K | Allen key size 6

**Mechanical** Dimensions

This page intentionally left blank

---

**Options / accessories** Hydraulic hoses

NO EXPLODED VIEW  
AVAILABLE  
FOR THIS BOM

| Item      | Part No.   | Name  | Qty | L |
|-----------|------------|---|-----|---|
| Not Shown | -          | Hydraulic hoses   | -   |   |
| -         | 3363087015 | Hose with flange, I.D. 25 (1"), flange SAE 1 1/4" - 6000 PSI / JIC 1 5/8", length 2300 mm (91 in.)  | 2   |   |
| -         | 3363087016 | Hose with flange, I.D. 25 (1"), flange SAE 1 1/4" - 6000 PSI / JIC 1 5/8", length 2800 mm (110 in.) | 2   |   |
| Not Shown | -          | Accessories to the hydraulic hoses (for two hoses)  | -   |   |
| -         | 3360106074 | Allen screw   | 8   |   |
| -         | 3363089476 | Seal  | 2   |   |
| -         | 3363066963 | Plug, M14 x 1.5 mm  | 4   |   |

---

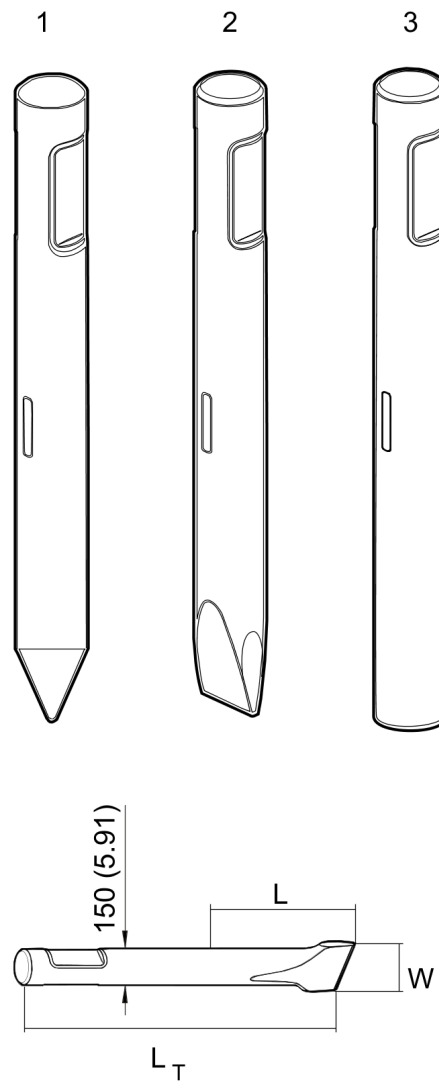
**Options / accessories** Optional equipment

NO EXPLODED VIEW  
AVAILABLE  
FOR THIS BOM

| Item      | Part No.   | Name   | Qty | L |
|-----------|------------|--|-----|---|
| -         | 3363091200 | Chisel paste cartridge, 12 x 500 g (1.1 lbs)   | 1   |   |
| -         | 3363034567 | Grease gun for 500 g cartridge   | 1   |   |
| -         | 3363089844 | Service box with nitrogen cylinder, 2 l, 0.43 gal (0.53 US gal)                                  | 1   |   |
| -         | 3363094940 | Service box without nitrogen cylinder  | 1   |   |
| -         | 3361852171 | Test gauge lower wear bush   | 1   |   |
| -         | 3363094952 | Inside callipers upper wear bush   | 1   |   |
| Not Shown | -          | Adapter plate matching the carrier. Consult the Atlas Copco Customer Center/Dealer in your area. | 1   |   |
| -         | 3363099795 | Base plate with threaded inserts   | 1   |   |
| -         | 3363087303 | Bolt kit   | 1   |   |
| -         | 3363100699 | Base plate with through borings  | 1   |   |
| -         | 3363094575 | Bolt kit   | 1   |   |
| -         | 3360209445 | Allen key (22 mm)  | 1   |   |
| -         | 3363117805 | Automatic lubrication system kit   | 1   | A |

Comments for Page: Optional equipment

A | ContiLube® II

**Options / accessories** Working tools

| Item | Part No.   | Name           | Qty | L |
|------|------------|----------------|-----|---|
| 1    | 3363087216 | Moil point     | 1   | A |
| 1    | 3363082241 | Moil point     | 1   | B |
| 2    | 3363085970 | Chisel (cross) | 1   | C |
| 2    | 3363082243 | Chisel (cross) | 1   | D |
| 3    | 3363087214 | Blunt tool     | 1   | E |
| 3    | 3363082245 | Blunt tool     | 1   | F |

Comments for Page: Working tools

(L)OCAL REMARKS

A | L = 515 mm, LT = 1150 mm, Wt = 137.0 kg

L = 20.28 inch, LT = 45.28 inch, Wt = 302.0 lb

B | L = 665 mm, LT = 1300 mm, Wt = 158.0 kg

L = 26.18 inch, LT = 51.18 inch, Wt = 348.3 lb

C | L = 515 mm, LT = 1150 mm, Wt = 143.0 kg

L = 20.28 inch, LT = 45.28 inch, Wt = 315.3 lb

D | L = 665 mm, LT = 1300 mm, Wt = 164.0 kg

L = 26.18 inch, LT = 51.18 inch, Wt = 361.6 lb

E | L = 515 mm, LT = 1150 mm, Wt = 155.0 kg

L = 20.28 inch, LT = 45.28 inch, Wt = 341.7 lb

F | L = 665 mm, LT = 1300 mm, Wt = 176.0 kg

L = 26.18 inch, LT = 51.18 inch, Wt = 388.0 lb

Any unauthorized use or copying of the contents or any part thereof is prohibited.  
This applies in particular to trademarks, model denominations, part numbers, and drawings.

