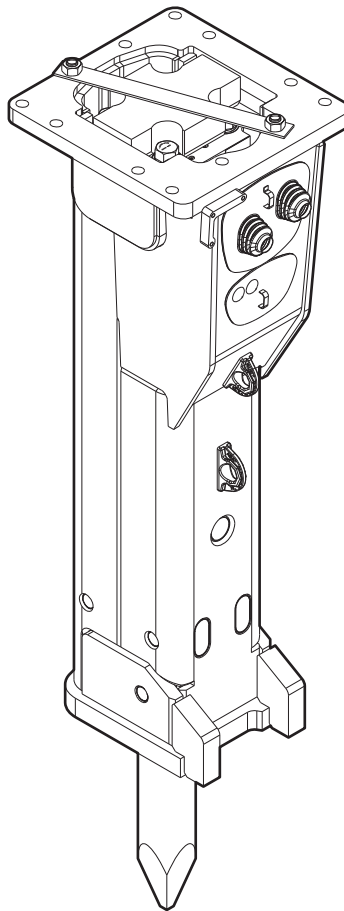


EC 150T

Spare parts list Hydraulic breakers

EC 150T s/n DEQ181223 -



General information

This spare parts list applies to the following:

Part number	Description
3363115611	Hydraulic breaker EC 150T
3363124828	Hydraulic breaker EC 150T with HATCON (3G)
3363126900	Hydraulic breaker EC 150T with HATCON (LTE)

Use only authorized parts. Any damage or malfunction caused by the use of unauthorized parts is not covered by Warranty or Product Liability. Any unauthorized use or copying of the contents or any part thereof is prohibited. This applies in particular to trademarks, model denominations, part numbers, and drawings.

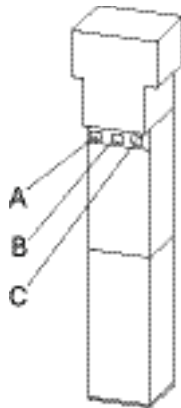
Instructions for use

This spare parts list contains no safety regulations and is merely intended to assist in the ordering of spare parts. For information about operating, servicing, or repairing, the relevant Safety and operating instructions must be consulted at all costs. Please observe the safety instructions listed in the relevant Safety and operating instructions!

Instructions for ordering

It is essential to indicate the serial number of the hydraulic attachment when ordering spare parts! Please note the full identification number of your hydraulic attachment. The code can be found on the cylinder. Determine the quantity of individual parts which are required and need to be ordered. The order must indicate the following details:

- full identification code of the hydraulic attachment
- required quantity
- part number
- description



- A. Cylinder number
- B. Type
- C. Serial number

Service, repair and wear part kits

Label kit	1
Kit list	3

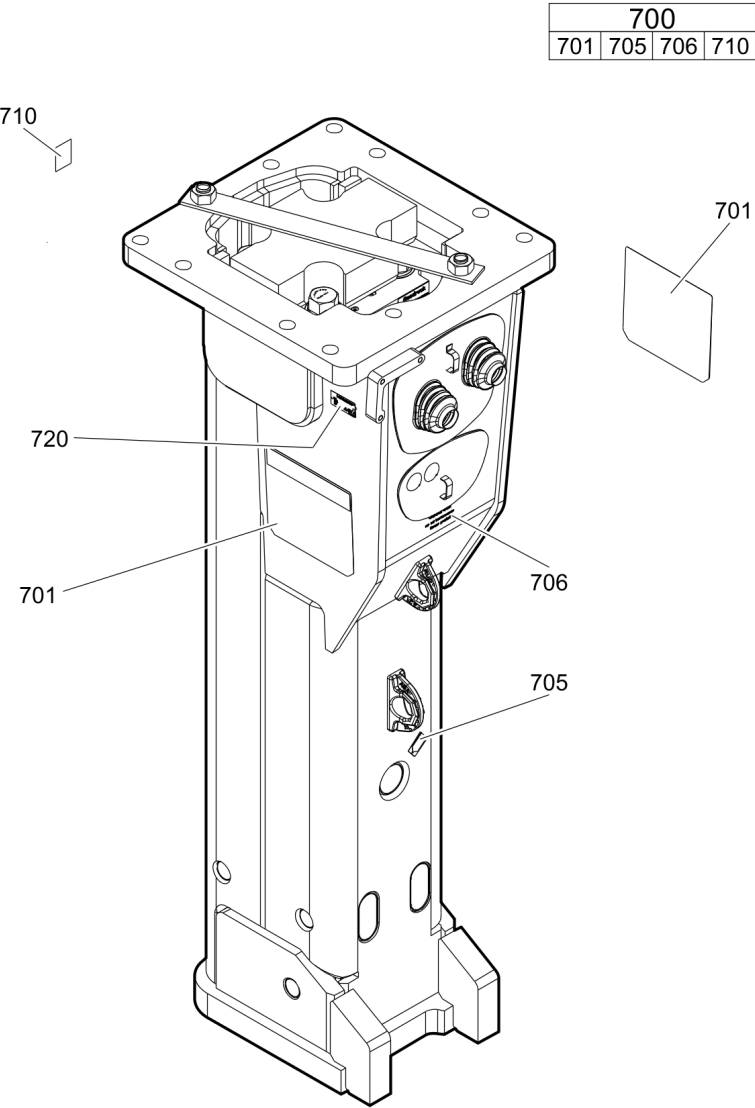
Mechanical

Hydraulic breaker	5
Percussion unit part 1: cylinder cover	7
Percussion unit part 2: cylinder	10
Percussion unit part 3: lower breaker part	13
HATCON	15
Tightening torques	17
Dimensions	19

Options / accessories

Hydraulic hoses	20
Optional equipment	23
Working tools ClassicLine	25

Service, repair and wear part kits Label kit



Item	Part No.	Name	Qty	L
700(701-710)	3363121471	Label kit	1	
701		Label "EC 150 Epiroc"	2	
705		LABEL - LUBRICATING SYMBOL	1	
706		GAS PRESSURE LABEL	2	
710		Sound power label	1	
720		NAME PLATE - Consult the authorized Customer Center/Dealer in your area.	1	

Service, repair and wear part kits Kit list

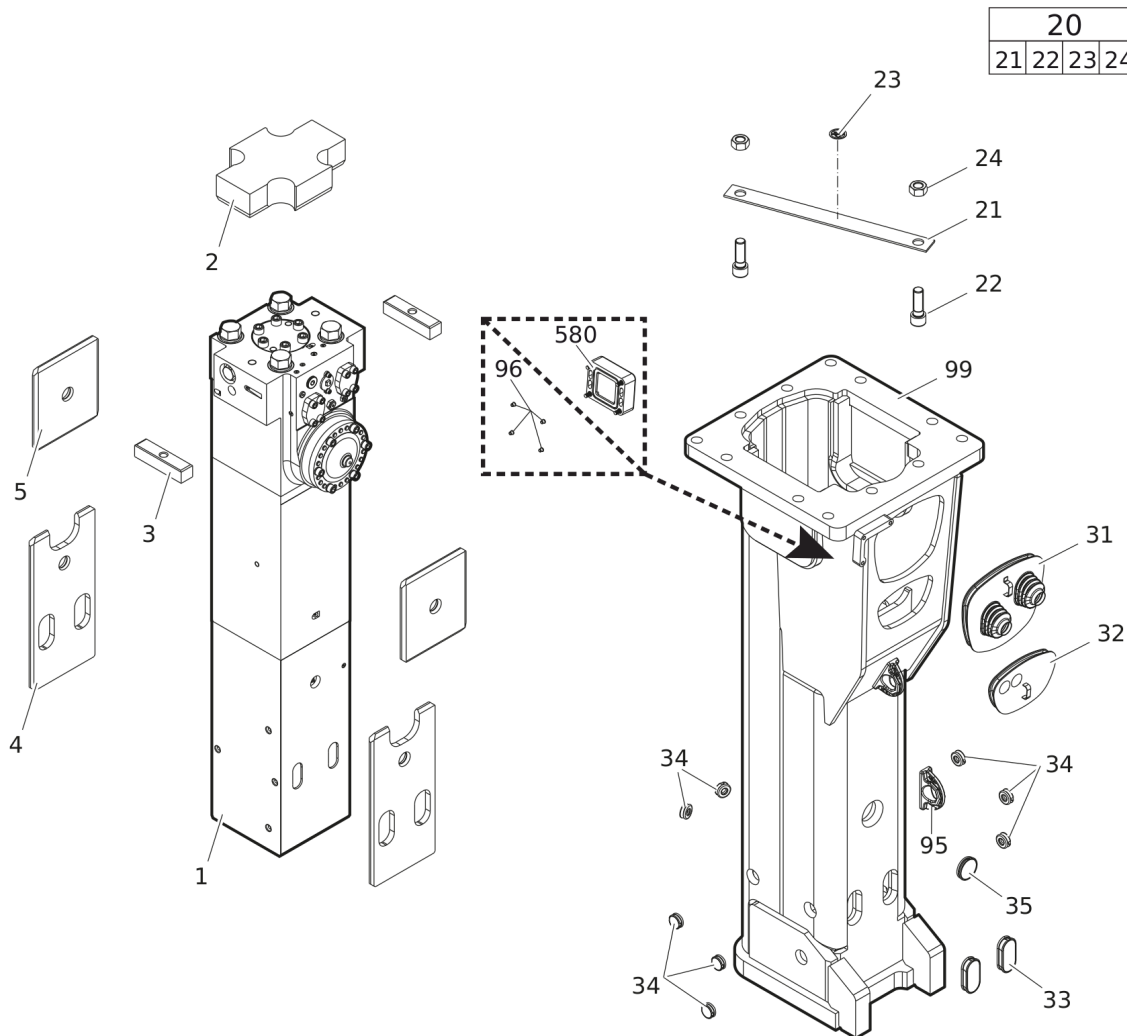
NO EXPLODED VIEW
AVAILABLE
FOR THIS BOM

Item	Part No.	Name	Qty	L
KIT	3363112842	Seal kit	1	
103	3360314375	O-RING	1	
131	3360314372	O-RING	2	
164	3361031912	O-ring	1	
165	3361850529	Back-up ring	1	
166	3361031990	O-ring	1	
182	3360478426	THREADED PLUG	1	
183	3360175125	O-RING	1	
194	3363112659	O-ring	1	
195	3360314656	O-ring	1	
201	3361855099	Seal	1	
204	3363112705	Seal	1	
290(291-292)	3363083589	Seal kit	1	
291		Back-up ring	1	
292		Seal	1	
301	3361031950	O-ring	1	
302	3363083669	Wiper	1	
305	3362267281	SEAL	8	
306	3362267585	SEAL	5	
307	3362267582	Stirromatic	2	
390(391-392)	3363083590	Seal kit	1	
391		Seal	1	
392		Back-up ring	1	
411	3360478097	O-RING	1	
KIT	3363098088	Fastening screw kit	1	
161	3363070490	ALLEN SCREW	6	
163	3361333703	PAIR OF LOCK WASHERS	6	
172	3361031989	Threaded insert	6	
KIT	3363089849	Accumulator repair kit	1	
-	3362261647	Diaphragm	1	
-	3360332259	FILLING SCREW	1	
-	3360314460	O-RING	1	
-	3361335025	PROTECTIVE CAP	1	
-	3361031912	O-ring	1	
-	3361850529	Back-up ring	1	

Refer to the DocMine web page for most up-to-date information. The printed information might be outdated.

Fri Oct 13 12:18:28 UTC 2023

Mechanical Hydraulic breaker



Item	Part No.	Name	Qty	L
1		Percussion unit	1	A
2	3363105835	Elastic pad	1	
3	3363105837	Shock absorber	2	
4	3363115362	Guide plate	2	
5	3363115363	Guide plate	2	
20(21-24)	3363083343	Transport safety device complete	1	
21		Transport safety device	1	
22	3360026883	Allen screw	2	
23	3363091872	LABEL TRANSPORT SAFETY DEVICE	1	
24	3360103254	Nut	2	
31	3363116067	Cover	1	
32	3363116113	Cover	1	
33	3363086011	Plug	2	
34	3363086015	Plug	8	
35	3362267893	Plug	1	
95	3363111994	LIFTING EYE	2	B
96	3315439145	PROTECTIVE PLUG HATCON	4	C
99	3363116075	Breaker box	1	D
580		HATCON	1	E

Comments for Page: Hydraulic breaker

(L)OCAL REMARKS

A | see separate chapter

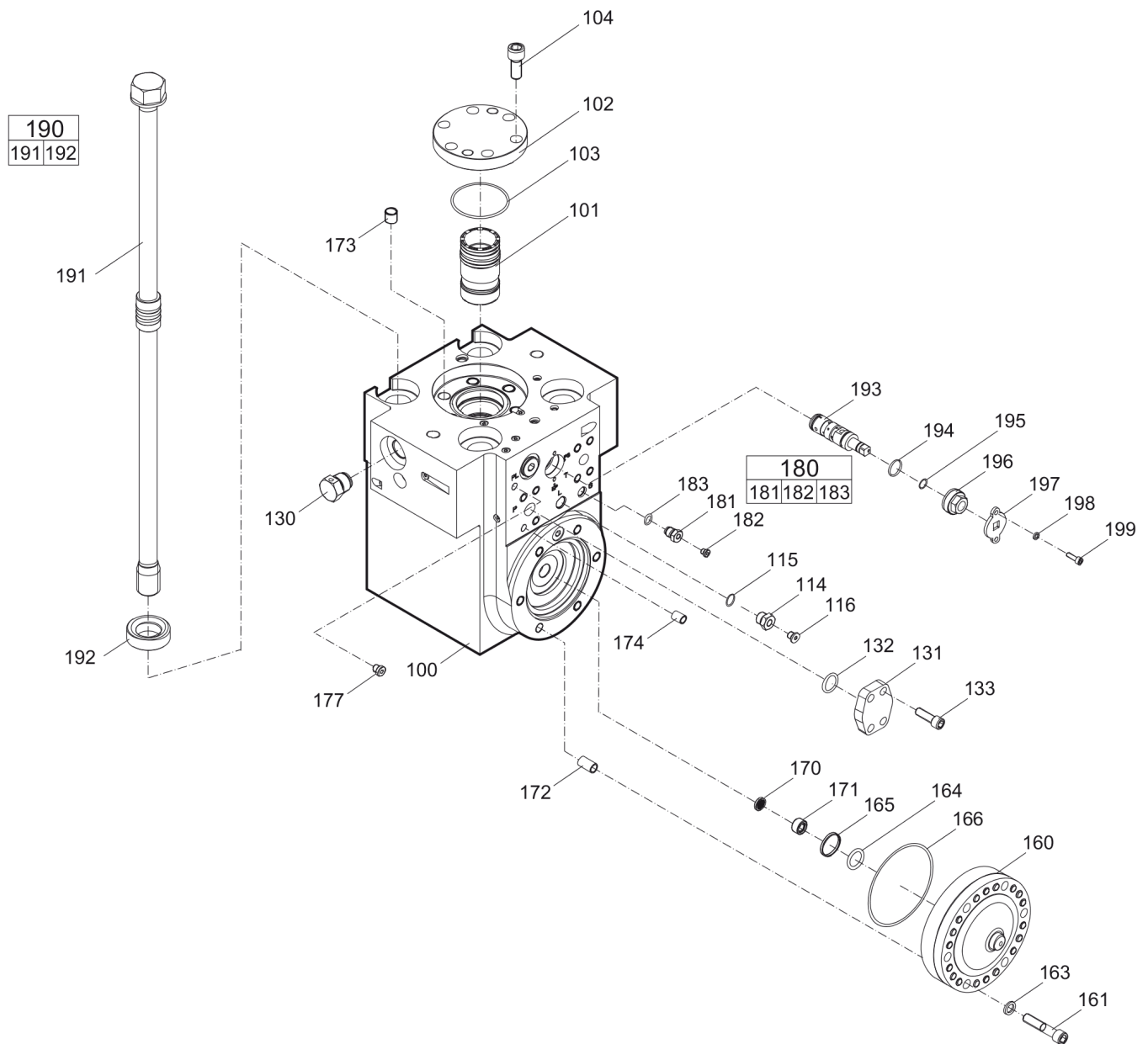
B | professional welding process necessary

C | only for hydraulic breakers without HATCON

D | with item 95 and 96

E | only for hydraulic breakers with HATCON / see separate chapter

Mechanical Percussion unit part 1: cylinder cover



Refer to the DocMine web page for most up-to-date information. The printed information might be outdated.

Fri Oct 13 12:18:31 UTC 2023

Item	Part No.	Name	Qty	L
100	3363112739	Cylinder cover	1	A
101	3363035439	Main control valve	1	
102	3361331555	COVER	1	
103	3360314375	O-RING	1	
104	3360103776	ALLEN SCREW	6	
114	3361854657	CONNECTING SCREW	1	
115	3360478171	O-RING	1	
116	3360478439	THREADED PLUG	1	
130	3361854511	NON-RETURN VALVE	1	
131	3363034041	Blind flange	2	
132	3360314372	O-RING	2	
133	3363034274	ALLEN SCREW	8	
160	3363069585	HP-accumulator	1	
161	3363070490	ALLEN SCREW	6	
163	3361333703	PAIR OF LOCK WASHERS	6	
164	3361031912	O-ring	1	
165	3361850529	Back-up ring	1	
166	3361031990	O-ring	1	
170	3361844113	STRAINER DISK	1	
171	3361844115	THREADED PLUG	1	
172	3361031989	Threaded insert	6	
173	3361031529	THREADED INSERT	6	
174	3361031946	Threaded insert	8	
177	3363066963	PLUG	1	
180(181-183)	3363087286	FILLING VALVE, complete	1	
181		FILLING VALVE	1	
182	3360478426	THREADED PLUG	1	
183	3360175125	O-RING	1	
190(191-192)	3363106905	Tensioning bolt complete	4	
191		Tensioning bolt	1	
192	3363093649	WASHER	1	
193	3363113244	Valve	1	B
194	3363112659	O-ring	1	
195	3360314656	O-ring	1	
196	3363113246	Threaded plug	1	
197	3363119005	Plate	1	
198	3361850743	PAIR OF LOCK WASHERS	2	

Refer to the DocMine web page for most up-to-date information. The printed information might be outdated.

Fri Oct 13 12:18:31 UTC 2023

Item	Part No.	Name	Qty	L
199	3360103735	Allen screw	2	

Comments for Page: Percussion unit part 1: cylinder cover

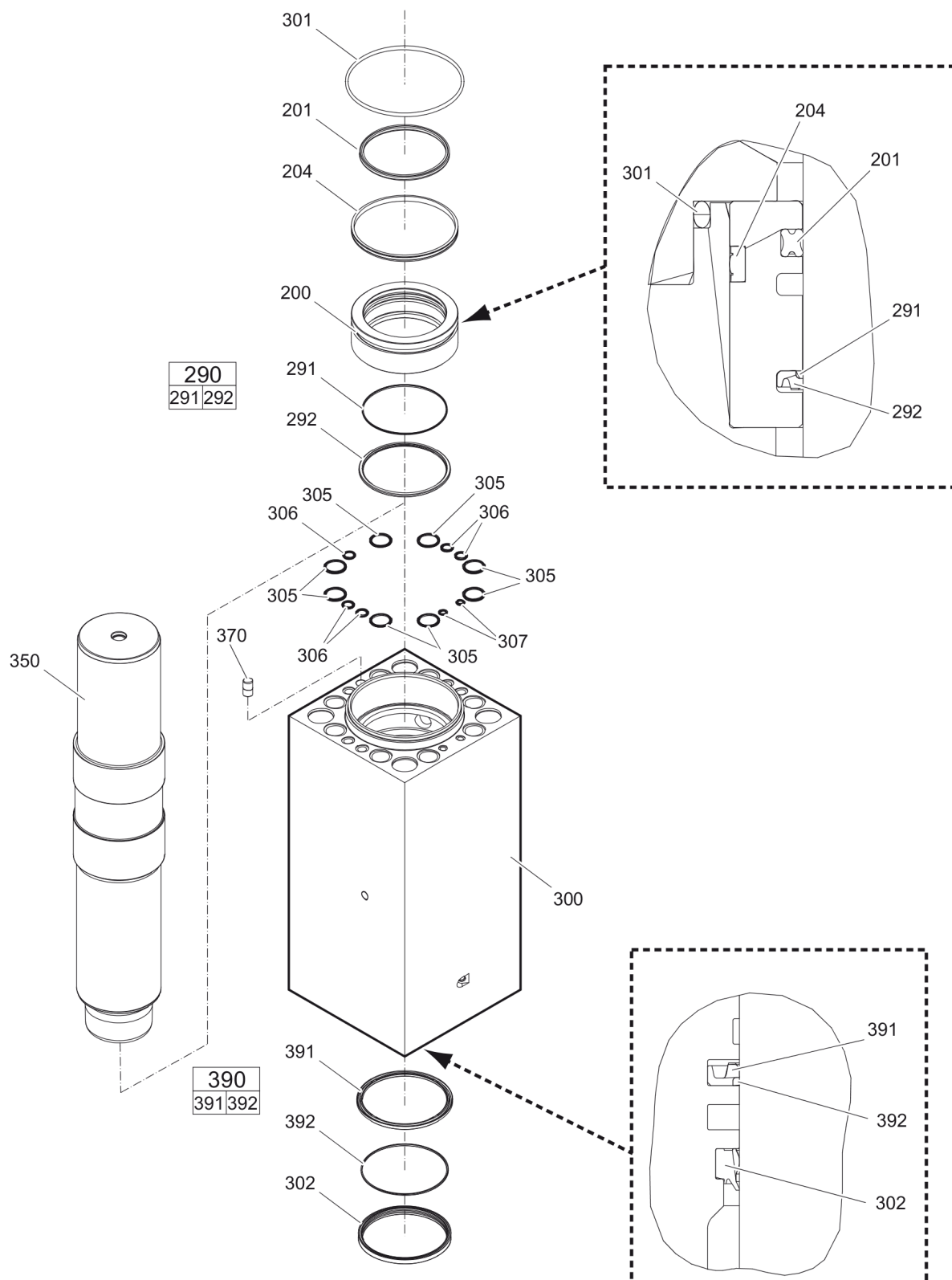
(L)OCAL REMARKS

A | with item 114 - 116 and 170 - 177

B | Stroke control

This page intentionally left blank

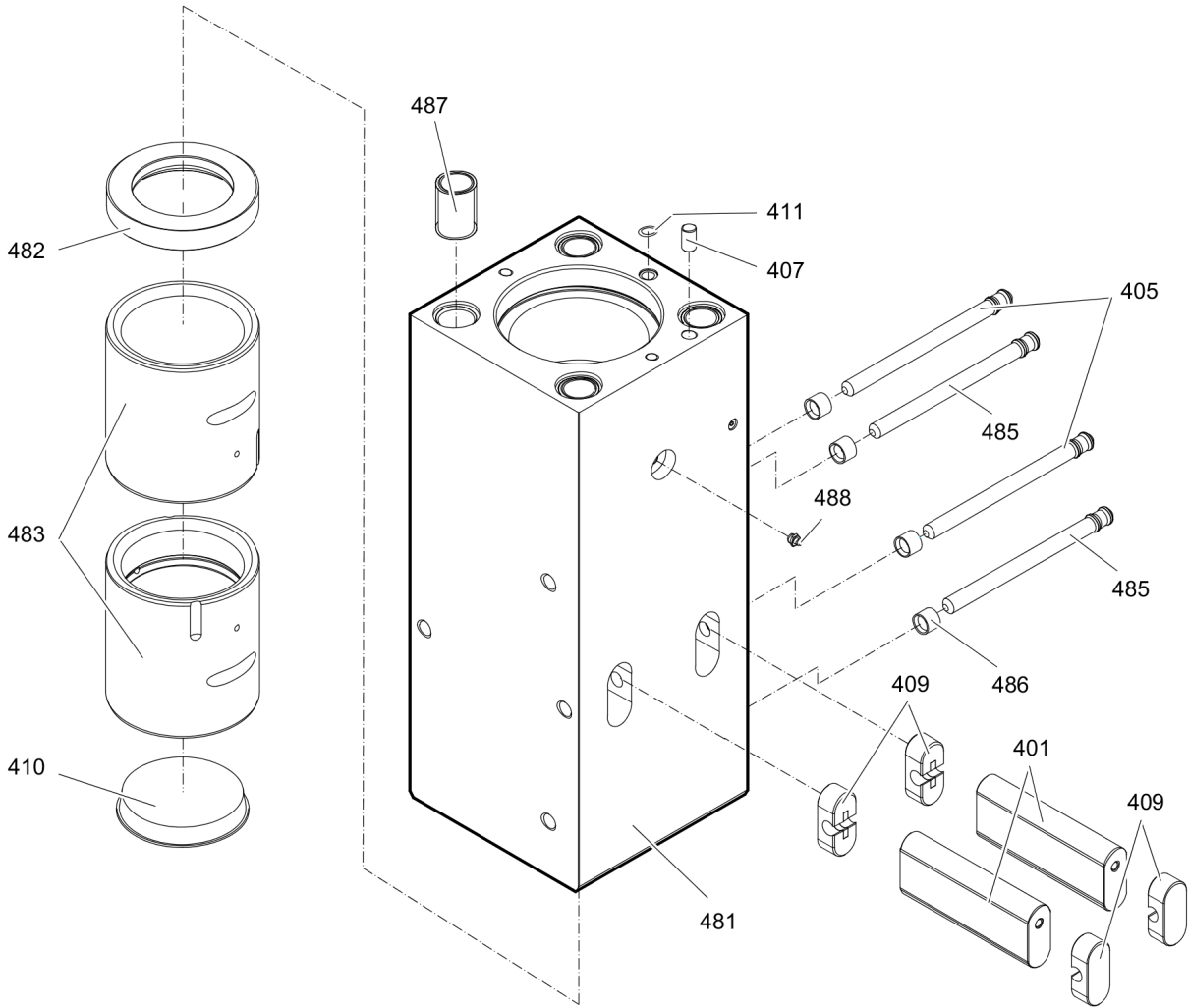
Mechanical Percussion unit part 2: cylinder



Item	Part No.	Name	Qty	L
200	3363112392	Seal flange	1	
201	3361855099	Seal	1	
204	3363112705	Seal	1	
290(291-292)	3363083589	Seal kit	1	
291		Back-up ring	1	
292		Seal	1	
300	3363112528	Cylinder	1	
301	3361031950	O-ring	1	
302	3363083669	Wiper	1	
305	3362267281	SEAL	8	
306	3362267585	SEAL	5	
307	3362267582	Stirromatic	2	
350	3363112401	Percussion piston	1	
370	3362268185	Lock pin	1	
390(391-392)	3363083590	Seal kit	1	
391		Seal	1	
392		Back-up ring	1	

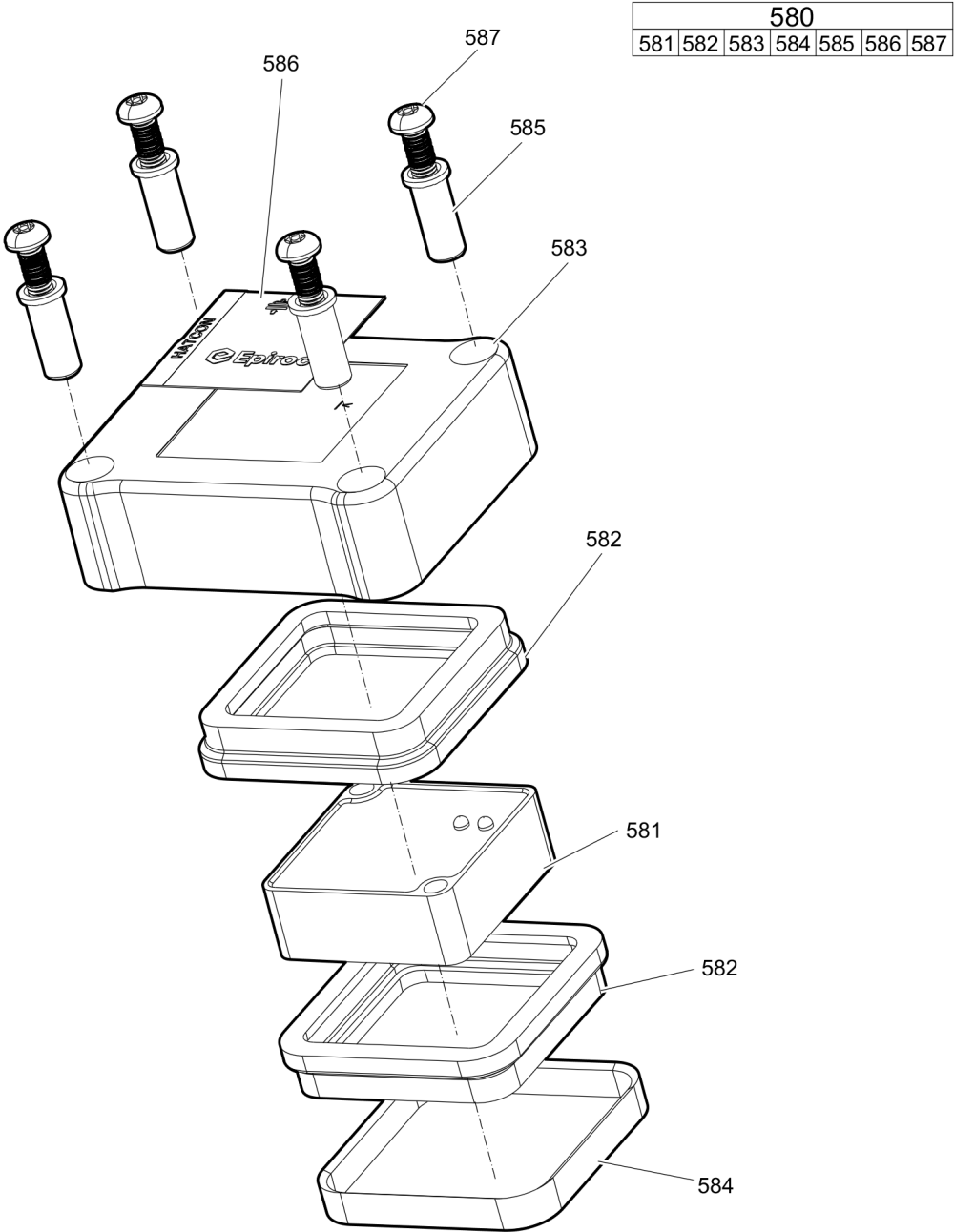
Mechanical Percussion unit part 3: lower breaker part

480						
481	482	483	485	486	487	488



Item	Part No.	Name	Qty	L
401	3360981927	Retainer bar	2	
405	3361854347	Bolt	2	
407	3362261705	Lock pin	1	
409	3362262925	Plug	4	
410	3360995340	Protective cap	1	
411	3360478097	O-RING	1	
480(481-488)	3363106627	Lower breaker part complete	1	
481		Lower breaker part	1	
482	3363069079	Impact ring	1	
483	3363105553	Wear bush	2	
485	3361854347	Bolt	2	
486	3361854363	LOCKING BUSH	4	
487	3363085379	THREADED INSERT	4	
488	3360433774	GREASE NIPPLE	1	

Mechanical HATCON



Item	Part No.	Name	Qty	L
580(581-587)		HATCON	1	A
581		TRACKING MODULE HATCON	1	
582	3315439130	DAMPER HATCON	2	
583	3315439110	HOUSING TYPE 1 HATCON	1	
584	3315439140	LOCK RING HATCON	1	
585	3315439120	SLEEVE HATCON	4	
586	3315439100	PRODUCT LABEL HATCON	1	
587	3315442600	SCREW HATCON	4	

Comments for Page: HATCON

A | part number see chapter "Optional equipment"

Mechanical Tightening torques

NO EXPLODED VIEW
AVAILABLE
FOR THIS BOM

Item	Part No.	Name	Qty	L
22	-	ALLEN SCREW - 240 Nm (177 ft lbf)	-	A
24	-	Nut - 240 Nm (177 ft lbf)	-	B
104	-	ALLEN SCREW - 380 Nm (280 ft lbf)	-	C
130	-	NON-RETURN VALVE - 200 Nm (148 ft lbf)	-	D
133	-	Allen screw - 130 Nm (96 ft lbf)	-	E
161	-	Allen screw - 350 Nm (258 ft lbf)	-	F
181	-	FILLING VALVE - 130 Nm (96 ft lbf)	-	G
182	-	THREADED PLUG - 20 Nm (15 ft lbf)	-	H
191	-	Tensioning bolt	-	I
196	-	THREADED PLUG - 300 Nm (221 ft lbf)	-	J
199	-	Allen screw - 20 Nm (15 ft lbf)	-	K
587	-	SCREW HATCON - 22 Nm (16 ft lbf)	-	L

Comments for Page: Tightening torques

(L)OCAL REMARKS

A | Allen key size 22

B | Socket spanner size 46

C | Allen key size 17

D | Socket spanner size 41

E | Allen key size 12

F | Allen key size 14

G | Socket spanner size 22

H | Allen key size 5

I | Torque wrench or Power wrench size 55

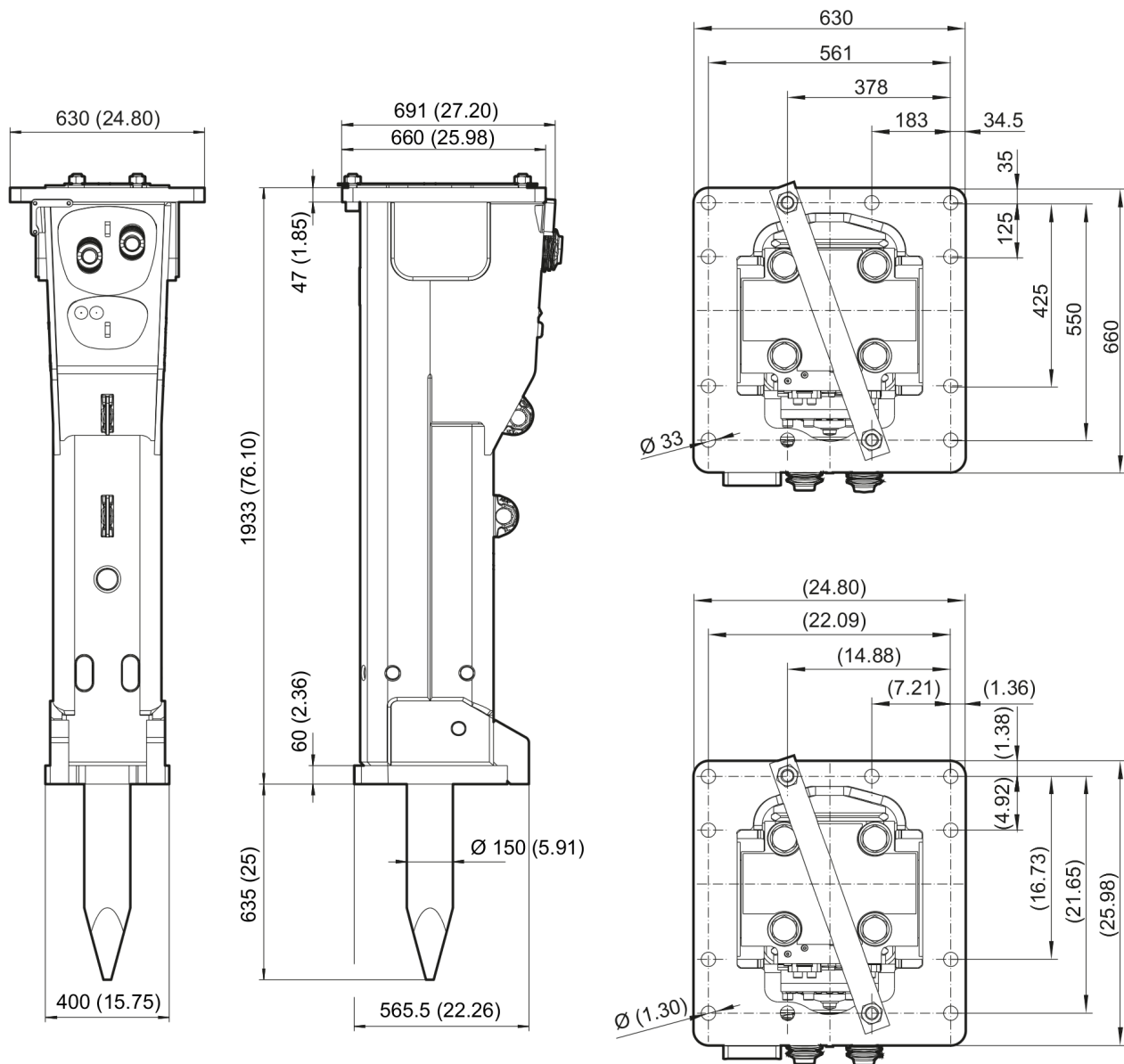
1. Pretighten the tensioning bolts to 500 Nm (369 ft lbf), proceeding in a crosswise fashion,
2. then tighten each tensioning bolt through 120° (2 sides of hexagonal head) in a crosswise fashion,
3. finally tighten each tensioning bolt again through 120° (2 sides of hexagonal head) in a crosswise fashion.

J | Socket spanner size 30

K | Allen key size 6

L | Security bit HATCON

Mechanical Dimensions



Refer to the DocMine web page for most up-to-date information. The printed information might be outdated.

Fri Oct 13 12:18:36 UTC 2023

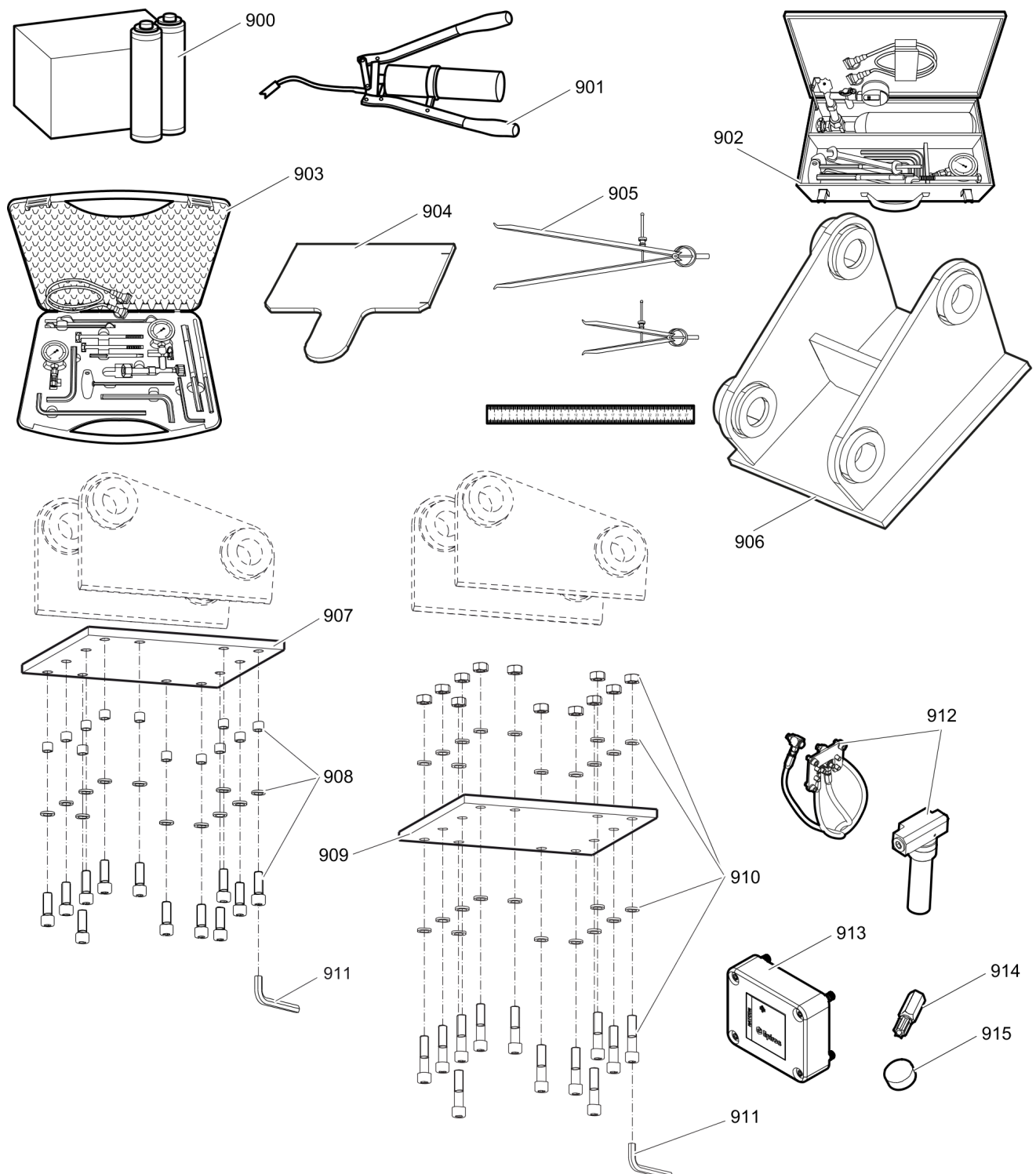
This page intentionally left blank

Options / accessories Hydraulic hoses

NO EXPLODED VIEW
AVAILABLE
FOR THIS BOM

Item	Part No.	Name	Qty	L
	-	Hydraulic hoses	-	
-	3363087015	Hydraulic hose with flange, I.D. 25 (1"), flange SAE 1 1/4" - 6000 PSI / JIC 1 5/8", length 2300 mm (91 in.)	2	
-	3363087016	Hydraulic hose with flange, I.D. 25 (1"), flange SAE 1 1/4" - 6000 PSI / JIC 1 5/8", length 2800 mm (110 in.)	2	
	-	Accessories to the hydraulic hoses (for two hoses)	-	
-	3360106074	Allen screw	8	
-	3363089476	Seal	2	
-	3363066963	PLUG	4	

Options / accessories Optional equipment



Item	Part No.	Name	Qty	L
900	3363122356	BIO CHISEL PASTE CARTRIDGE, 12 x 550 g (1.2 lbs)	1	
900	3363091200	CHISEL PASTE CARTRIDGE, 12 x 500 g (1.1 lbs)	1	
901	3363034567	GREASE PUMP	1	
902	3363491004	CHARGING BOX with nitrogen cylinder, 2 l, 0.43 gal (0.53 US gal)	1	
903	3363117786	CHARGING BOX without nitrogen cylinder	1	
904	3361852171	TEST GAUGE LOWER WEAR BUSH	1	
905	3363094952	INSIDE CALLIPERS UPPER WEAR BUSH	1	
906		ADAPTER PLATE matching the carrier. Consult the authorized Customer Center/Dealer in your area.	1	
907	3363099795	BASE PLATE WITH THREADED INSERTS	1	
908	3363087303	BOLT KIT	1	
909	3363100699	BASE PLATE WITH THROUGH BORINGS	1	
910	3363094575	BOLT KIT	1	
911	3360209445	ALLEN KEY (22 mm)	1	
912	3363117805	AUTOMATIC LUBRICATION SYSTEM KIT	1	A
913	3315442500	HATCON KIT 1 (3G)	1	B
913	3315442520	HATCON KIT 1 (LTE)	1	B
914	3315439105	SECURITY BIT HATCON	1	
915	3315439106	MAGNET HATCON	1	

Comments for Page: Optional equipment

A | ContiLube® II

B | with item 914 and 915

Hydraulic breakers are factory equipped with threads for attaching Retrofit kit HATCON

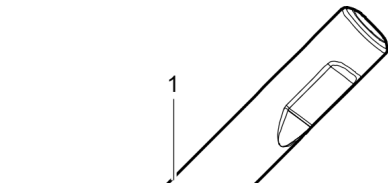
from s/n DEQ210184 - (EC 150T)

from s/n DEQ201091 - (EC 150T CL)

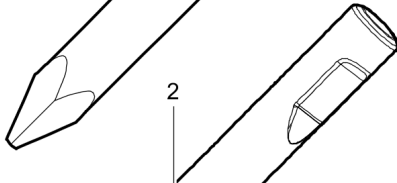
from s/n DEQ210181 - (EC 155T)

from s/n DEQ201047 - (EC 155T CL)

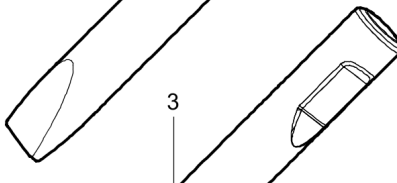
Options / accessories Working tools ClassicLine



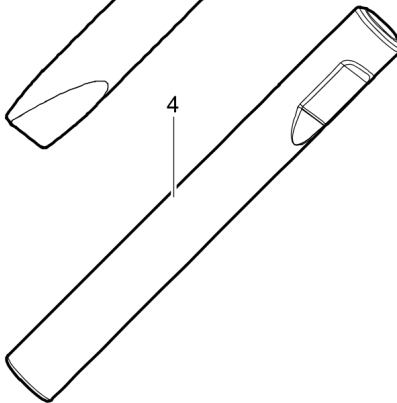
Ø=150 mm, L=635 mm, L_T=1270 mm, Wt=153.9 kg
 Ø=5.91 inch, L=25 inch, L_T=50.00, Wt=339.3 lb



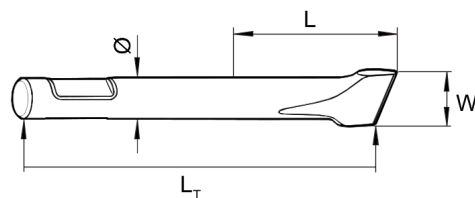
Ø=150 mm, W=150 mm, L=635 mm, L_T=1270 mm, Wt=160.1 kg
 Ø=5.91 inch, W=5.91 inch, L=25 inch, L_T=50.00, Wt=353.0 lb



Ø=150 mm, W=150 mm, L=635 mm, L_T=1270 mm, Wt=160.1 kg
 Ø=5.91 inch, W=5.91 inch, L=25 inch, L_T=50.00, Wt=353.0 lb



Ø=150 mm, L=635 mm, L_T=1270 mm, Wt=170.7 kg
 Ø=5.91 inch, L=25 inch, L_T=50.00, Wt=376.3 lb



Item	Part No.	Name	Qty	L
1	3363119609	Moil point	1	
2	3363119610	Chisel (cross)	1	
3	3363119611	Chisel (parallel)	1	
4	3363119612	Blunt tool	1	

Any unauthorized use or copying of the contents or any part thereof is prohibited.
This applies in particular to trademarks, model denominations, part numbers, and
drawings.