

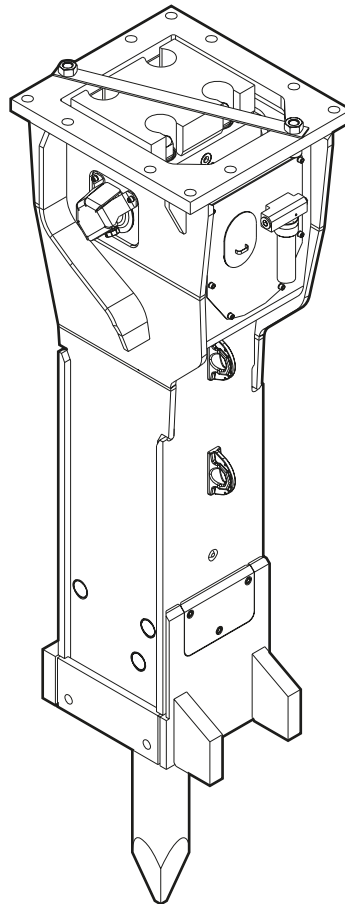
HB 4700, 4700 DP

Spare parts list

Hydraulic breakers

HB 4700 s/n DEQ140632 - DEQ171410

HB 4700 DP s/n DEQ140632 - DEQ171410



General information

This spare parts list applies to the following:

Part number	Description
3363102751	Hydraulic breaker HB 4700 with lower wear bush (steel)
3363116867	Hydraulic breaker HB 4700 with lower wear bush (bronze)
3363104461	Hydraulic breaker HB 4700 DustProtector with lower wear bush (steel)
3363116868	Hydraulic breaker HB 4700 DustProtector with lower wear bush (bronze)

Use only authorized parts. Any damage or malfunction caused by the use of unauthorized parts is not covered by Warranty or Product Liability. Any unauthorized use or copying of the contents or any part thereof is prohibited. This applies in particular to trademarks, model denominations, part numbers, and drawings.

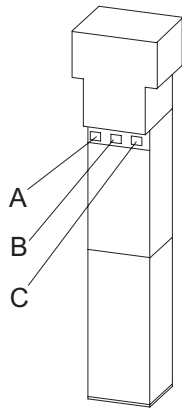
Instructions for use

This spare parts list contains no safety regulations and is merely intended to assist in the ordering of spare parts. For information about operating, servicing, or repairing, the relevant Safety and operating instructions must be consulted at all costs. Please observe the safety instructions listed in the relevant Safety and operating instructions!

Instructions for ordering

It is essential to indicate the serial number of the hydraulic attachment when ordering spare parts! Please note the full identification number of your hydraulic attachment. The code can be found on the cylinder. Determine the quantity of individual parts which are required and need to be ordered. The order must indicate the following details:

- full identification code of the hydraulic attachment
- required quantity
- part number
- description



- A. Cylinder number
- B. Type
- C. Serial number

Contents

Service, repair and wear part kits

Label kit HB 4700	1
Label kit HB 4700 DustProtector	3
Kit list	5

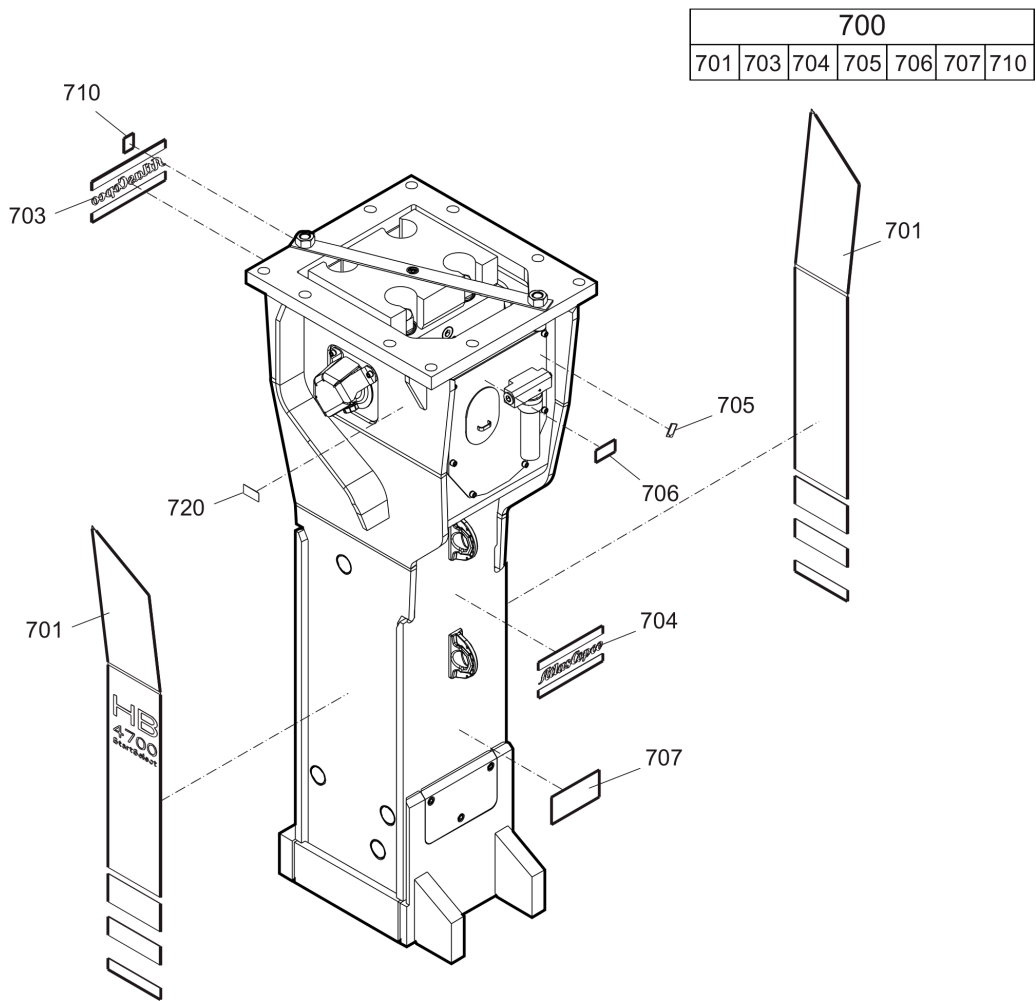
Mechanical

Hydraulic breaker HB 4700	10
Hydraulic breaker HB 4700 DustProtector	13
Percussion unit part 1: cylinder cover	16
Percussion unit part 2: cylinder	20
Percussion unit part 3: lower breaker part (steel)	23
Percussion unit part 3: lower breaker part (bronze)	25
Connecting kit for automatic lubrication system	27
StartSelect - AutoStart or AutoStop	29
Optional parts	31
Tightening torque	33
Dimensions HB 4700	36
Dimensions HB 4700 DP	38

Options / accessories

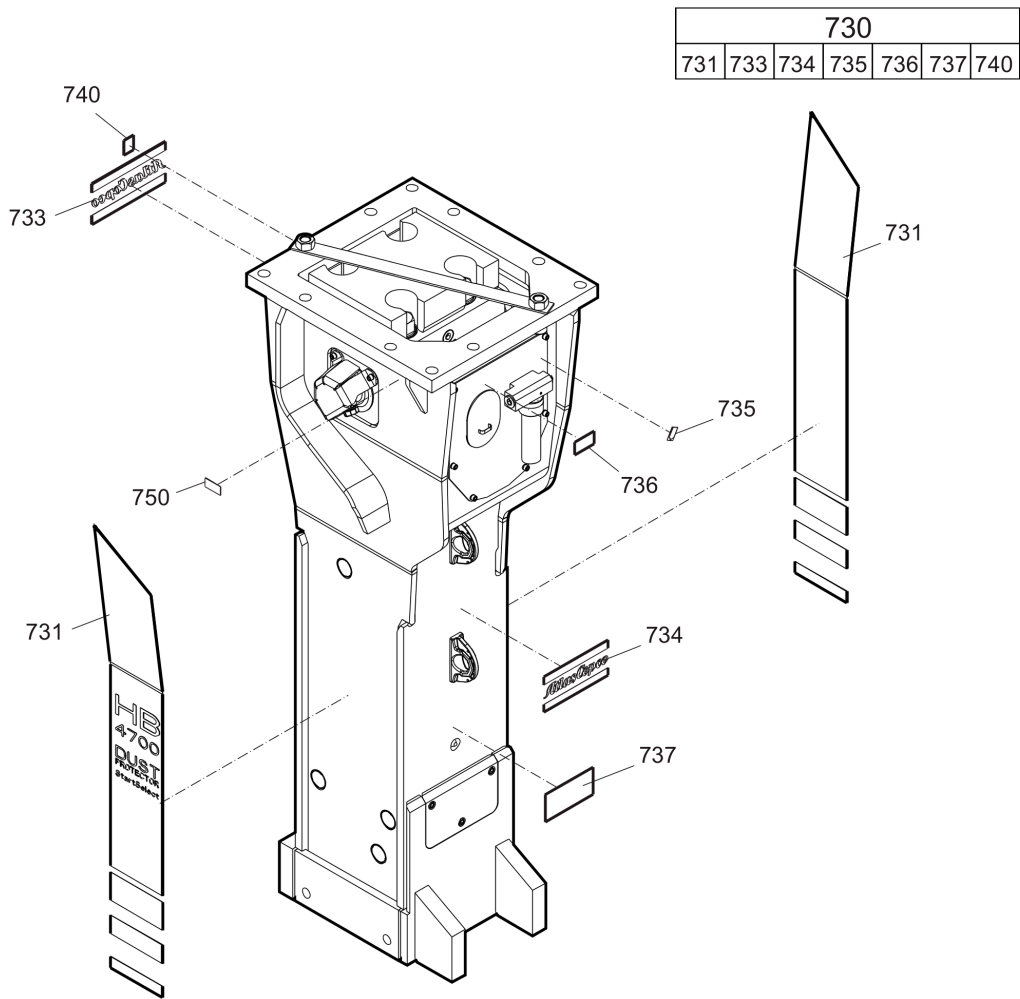
Hydraulic hoses	40
Optional equipment	43
Working tools ClassicLine HB 4700	45
Working tools SilverLine HB 4700	47
Working tools ClassicLine HB 4700 DP	49
Working tools SilverLine HB 4700 DP	51

Service, repair and wear part kits Label kit HB 4700



Item	Part No.	Name	Qty	L
700(701-710)	3363103839	Label kit HB 4700	1	
701		Product label "HB 4700"	2	
703		Product label "Atlas Copco"	1	
704		Product label "Atlas Copco"	1	
705		Label - Lubricating symbol	1	
706		Label - Gas pressure	1	
707		Label working tools	1	
710		Sound power label	1	
720		Name plate - Consult the Atlas Copco Customer Center/Dealer in your area.	1	

Service, repair and wear part kits Label kit HB 4700 DustProtector



Item	Part No.	Name	Qty	L
730(731-740)	3363103840	Label kit HB 4700 DP	1	
731		Product label "HB 4700 DP"	2	
733		Product label "Atlas Copco"	1	
734		Product label "Atlas Copco"	1	
735		Label - Lubricating symbol	1	
736		Label - Gas pressure	1	
737		Label working tools	1	
740		Sound power label	1	
750		Name plate - Consult the Atlas Copco Customer Center/Dealer in your area.	1	

Service, repair and wear part kits Kit list

NO EXPLODED VIEW
AVAILABLE
FOR THIS BOM

Item	Part No.	Name	Qty	L
KIT	3363103836	Seal kit	1	
103	3360314849	O-ring	1	
108	3360314370	O-ring	2	
112	3363110401	O-ring	1	
113	3363087085	Back-up ring	1	
115	3360478171	O-ring	1	
120	3363103803	O-ring	1	
138	3360314373	O-ring	2	
145(146-147)	3361850422	Seal kit	2	
146		O-ring	2	
147		Back-up ring	2	
164	3360314364	O-ring	1	
165	3360328046	Back-up ring	1	
182	3360478426	Threaded plug	1	
183	3360175125	O-ring	1	
202	3363103874	Seal	1	
204	3363103804	Seal	1	
290(291-292)	3363103837	Seal kit	2	
291		Back-up ring	1	
292		Seal	1	
305	3363103805	Wiper	1	
306	3362267583	Stirromatic	4	
307	3362267585	Seal	5	
308	3362267589	Seal	8	
390(391-392)	3363103838	Seal kit	2	
391		Seal	1	
392		Back-up ring	1	
602	3363083245	O-ring	1	
KIT	3363091732	Seal kit for swivel joint for automatic lubrication system	1	
KIT	3363116818	Plastic parts kit	1	
2	3363102759	Elastic pad	1	
3	3363102755	Shock absorber	2	
4	3363115360	Guide plate	2	
5	3363115361	Guide plate	2	
7	3363086237	Plate	1	
KIT	3363103859	Tensioning bolt kit	1	A
191		Tensioning bolt	2	

Refer to Parts Online for the most up to date information. The printed information might be outdated.

Tue Oct 25 07:07:36 UTC 2016

Item	Part No.	Name	Qty	L
192	3363093653	Washer	2	
488	3363085321	Threaded insert	2	
KIT	3363103860	DustProtector kit	1	
11	3363104427	Floating ring (tribolid)	1	
12	3363104425	Counter ring	1	
13	3363104429	Guide ring	1	
14	3363070644	Bolt	2	
15	3361854363	Locking bush	2	
KIT	3363116808	Noise protection kit	1	
34	3363086017	Plug	11	
36	3363115515	Cover	2	
40	3363092697	Cover	1	
KIT	3363103863	Lower breaker part kit (steel)	1	
401	3361331529	Retainer bar	2	
402	3362261540	Bolt	2	
403	3362262921	Plug	4	
482	3363105037	Impact ring	1	
483	3363105039	Wear bush	1	
484	3363105041	Wear bush (steel)	1	
485	3361854363	Locking bush	2	
486	3363105043	Bolt	2	
487	3362260433	Locking bush	2	
-	3315038100	Chisel paste cartridge, 400 g 0.88 lb	1	
-	3363104733	Test gauge lower wear bush	1	
KIT	3363103861	Lower breaker part kit (bronze)	1	
401	3361331529	Retainer bar	2	
402	3362261540	Bolt	2	
403	3362262921	Plug	4	
482	3363105037	Impact ring	1	
483	3363105039	Wear bush	1	
484	3363105051	Wear bush (bronze)	1	
485	3361854363	Locking bush	2	
486	3363105043	Bolt	2	
487	3362260433	Locking bush	2	
-	3315038100	Chisel paste cartridge, 400 g 0.88 lb	1	
-	3363104733	Test gauge lower wear bush	1	
KIT	3363103864	Lower breaker part kit (steel) for DustProtector version	1	

Refer to Parts Online for the most up to date information. The printed information might be outdated.

Tue Oct 25 07:07:36 UTC 2016

Item	Part No.	Name	Qty	L
18	3363105045	Base for wiper	1	
19	3363105047	Wiper	1	
401	3361331529	Retainer bar	2	
402	3362261540	Bolt	2	
403	3362262921	Plug	4	
482	3363105037	Impact ring	1	
483	3363105039	Wear bush	1	
484	3363105041	Wear bush (steel)	1	
485	3361854363	Locking bush	2	
486	3363105043	Bolt	2	
487	3362260433	Locking bush	2	
-	3315038100	Chisel paste cartridge, 400 g 0.88 lb	1	
-	3363104733	Test gauge lower wear bush	1	
KIT	3363103862	Lower breaker part kit (bronze) for DustProtector version	1	
18	3363105045	Base for wiper	1	
19	3363105047	Wiper	1	
401	3361331529	Retainer bar	2	
402	3362261540	Bolt	2	
403	3362262921	Plug	4	
482	3363105037	Impact ring	1	
483	3363105039	Wear bush	1	
484	3363105051	Wear bush (bronze)	1	
485	3361854363	Locking bush	2	
486	3363105043	Bolt	2	
487	3362260433	Locking bush	2	
-	3315038100	Chisel paste cartridge, 400 g 0.88 lb	1	
-	3363104733	Test gauge lower wear bush	1	
KIT	3363103487	Fastening screw kit	1	
161	3363113101	Fastening screw	4	
162	3363100049	Washer	4	
172	3361031546	Threaded insert	4	
KIT	3363089850	Accumulator repair kit	1	
-	3361329022	Diaphragm	1	
-	3360332259	Filling screw	1	
-	3360314460	O-ring	1	
-	3361335025	Protective cap	1	
-	3360314364	O-ring	1	

Refer to Parts Online for the most up to date information. The printed information might be outdated.

Tue Oct 25 07:07:36 UTC 2016

Item	Part No.	Name	Qty	L
-	3360328046	Back-up ring	1	

Comments for Page: Kit list

A | You need Anti-Seize agent when fitting tensioning bolts. You have to order it separately.

Anti-seize 120 g, part number 3363094300

Or buy it locally according to the following specification:

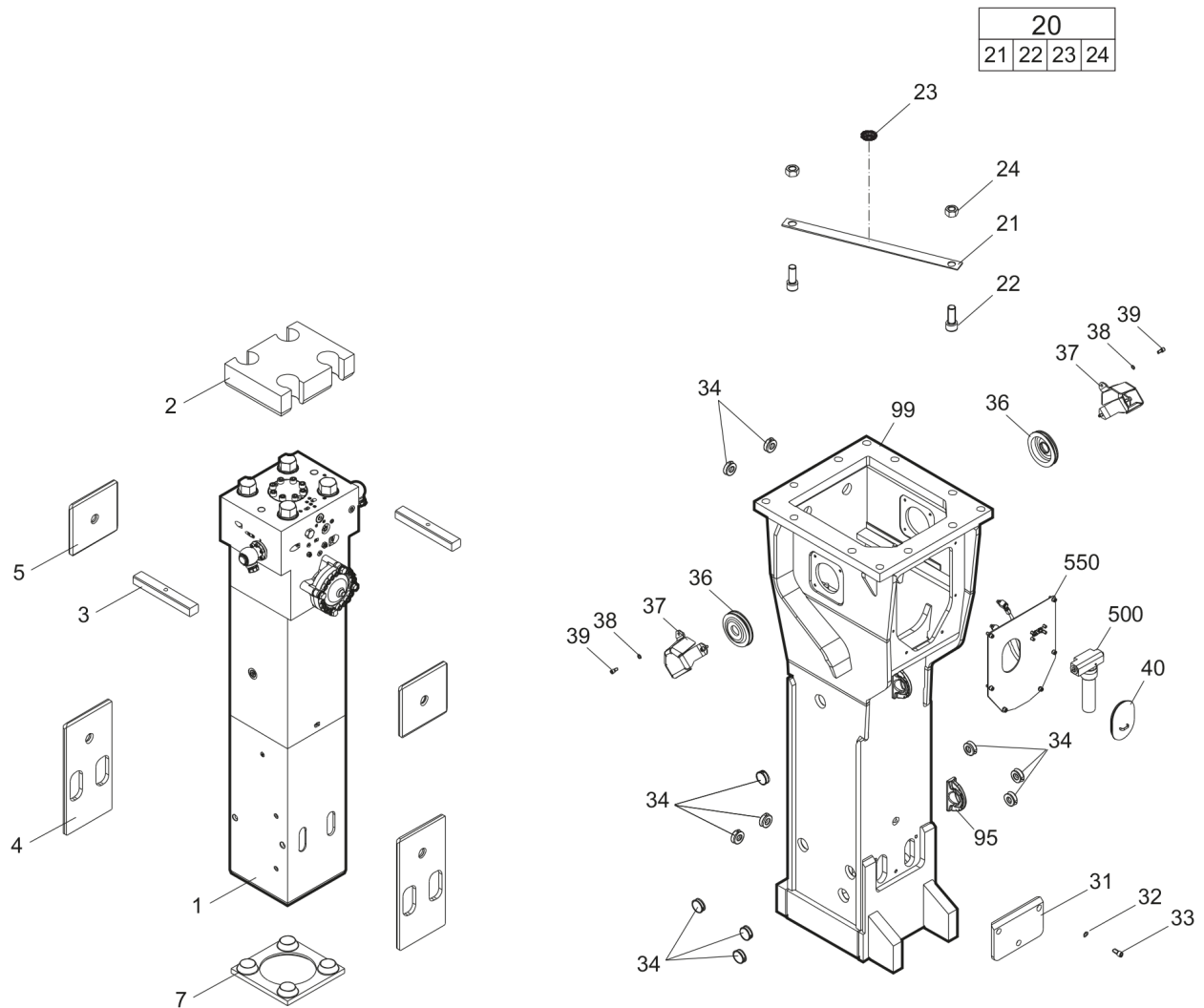
coefficient of friction 0.14

coefficient of friction thread 0.13

coefficient of friction on upside down 0.15

This page intentionally left blank

Mechanical Hydraulic breaker HB 4700



Item	Part No.	Name	Qty	L
1		Percussion unit	1	A
2	3363102759	Elastic pad	1	
3	3363102755	Shock absorber	2	
4	3363115360	Guide plate	2	
5	3363115361	Guide plate	2	
7	3363086237	Plate	1	
20(21-24)	3363094826	Transport safety device complete	1	
21		Transport safety device	1	
22	3360114151	Allen screw	2	
23	3363091872	Label transport safety device	1	
24	3360103255	Nut	2	
31	3363115523	Plate	1	
32	3361333703	Pair of lock washers	3	
33	3362328113	Allen screw	3	
34	3363086017	Plug	11	
36	3363115515	Cover	2	
37	3363115524	Swivel joint cover	2	
38	3361850596	Pair of lock washers	6	
39	3360103750	Allen screw	6	
40	3363092697	Cover	1	
95	3363111995	Lifting eye	2	B
99	3363115539	Breaker box	1	C
500	3363067123	Automatic lubrication system	1	D
550		Connecting kit for automatic lubrication system	1	A

Comments for Page: Hydraulic breaker HB 4700

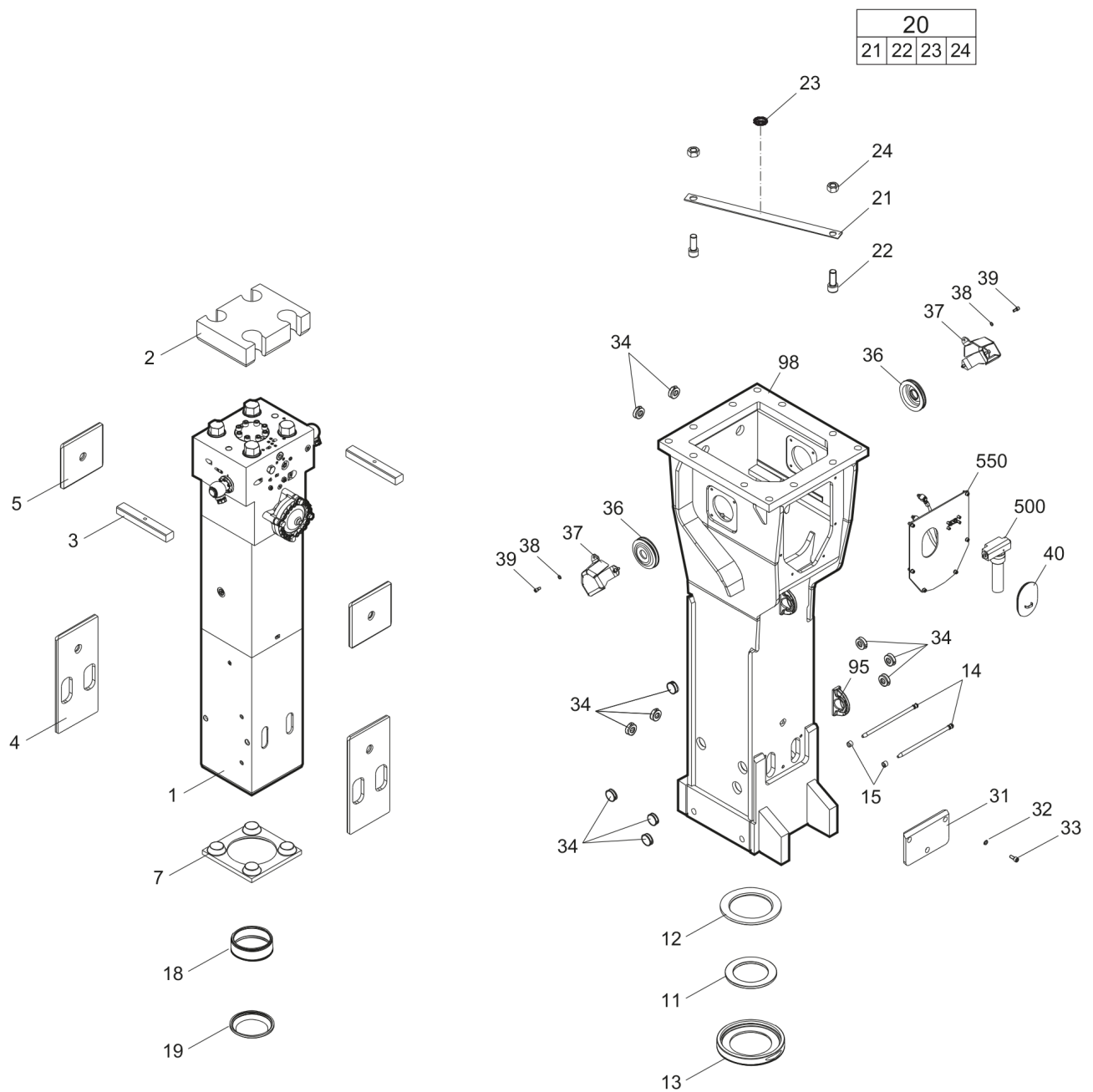
(L)OCAL REMARKS

A | see separate chapter

B | professional welding process necessary

C | with item 95

D | see separate Safety and operating instructions

Mechanical Hydraulic breaker HB 4700 DustProtector

Refer to Parts Online for the most up to date information. The printed information might be outdated.

Tue Oct 25 07:07:37 UTC 2016

Item	Part No.	Name	Qty	L
1		Percussion unit	1	A
2	3363102759	Elastic pad	1	
3	3363102755	Shock absorber	2	
4	3363115360	Guide plate	2	
5	3363115361	Guide plate	2	
7	3363086237	Plate	1	
11	3363104427	Floating ring (tribolid)	1	B
12	3363104425	Counter ring	1	
13	3363104429	Guide ring	1	
14	3363070644	Bolt	2	
15	3361854363	Locking bush	2	
18	3363105045	Base for wiper	1	
19	3363105047	Wiper	1	
20(21-24)	3363094826	Transport safety device complete	1	
21		Transport safety device	1	
22	3360114151	Allen screw	2	
23	3363091872	Label transport safety device	1	
24	3360103255	Nut	2	
31	3363115523	Plate	1	
32	3361333703	Pair of lock washers	3	
33	3362328113	Allen screw	3	
34	3363086017	Plug	11	
36	3363115515	Cover	2	
37	3363115524	Swivel joint cover	2	
38	3361850596	Pair of lock washers	6	
39	3360103750	Allen screw	6	
40	3363092697	Cover	1	
95	3363111995	Lifting eye	2	C
98	3363115538	Breaker box	1	D
500	3363067123	Automatic lubrication system	1	E
550		Connecting kit for automatic lubrication system	1	A

Comments for Page: Hydraulic breaker HB 4700 DustProtector

(L)OCAL REMARKS

A | see separate chapter

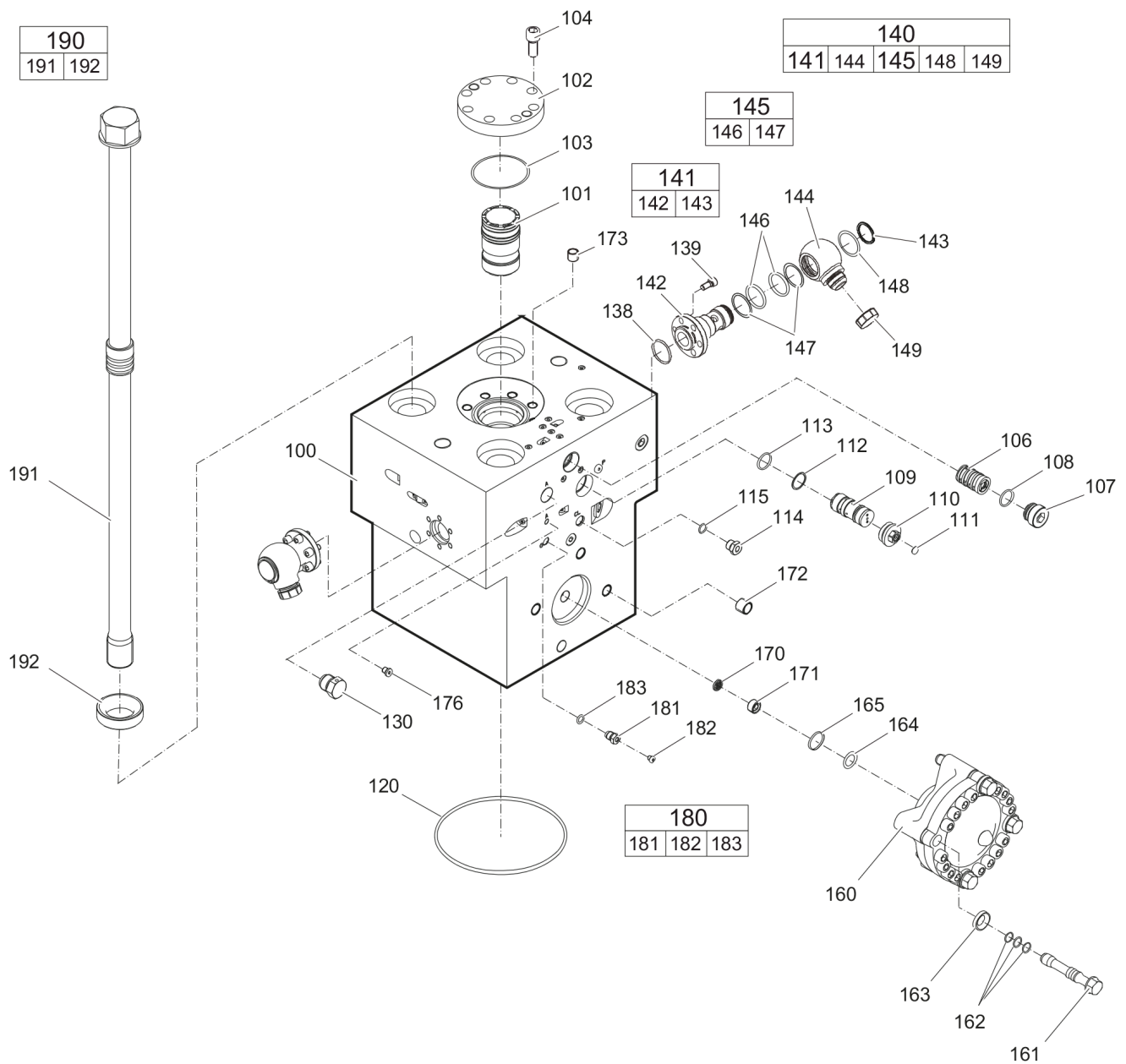
B | steel see chapter Optional parts

C | professional welding process necessary

D | with item 95

E | see separate Safety and operating instructions

This page intentionally left blank

Mechanical Percussion unit part 1: cylinder cover

Refer to Parts Online for the most up to date information. The printed information might be outdated.

Tue Oct 25 07:07:38 UTC 2016

Item	Part No.	Name	Qty	L
100	3363103872	Cylinder cover	1	A
101	3363105013	Main control valve	1	
102	3363105015	Cover	1	
103	3360314849	O-ring	1	
104	3360026782	Allen screw	6	
106	3363035453	Valve	1	B
107	3363035425	Threaded plug	1	
108	3360314370	O-ring	1	
109	3363085270	Safety valve	1	C
110	3363087086	Threaded plug	1	
111	3363087087	Threaded plug	1	
112	3363110401	O-ring	1	
113	3363087085	Back-up ring	1	
114	3361854657	Connecting screw	1	
115	3360478171	O-ring	1	
120	3363103803	O-ring	1	
130	3361854511	Non-return valve	1	
138	3360314373	O-ring	2	
139	3360103750	Allen screw	12	
140(141-149)	3363116891	Swivel joint complete	2	
141(142-143)	3363116890	Adapter complete	1	
142		Adapter	1	
143	3363116062	Snapring	1	
144	3361356643	Adapter	1	
145(146-147)	3361850422	Seal kit	1	
146		O-ring	2	
147		Back-up ring	2	
148	3361356645	Disk	1	
149	3361353489	Cap	1	
160	3363094981	HP-accumulator	1	
161	3363113101	Fastening screw	4	D
162	3363114730	Service kit O-rings	1	E
163	3363100049	Washer	4	
164	3360314364	O-ring	1	
165	3360328046	Back-up ring	1	
170	3361844113	Strainer disk	1	
171	3361844115	Threaded plug	1	

Refer to Parts Online for the most up to date information. The printed information might be outdated.

Tue Oct 25 07:07:38 UTC 2016

Item	Part No.	Name	Qty	L
172	3361031546	Threaded insert	4	
173	3361031529	Threaded insert	6	
176	3360478439	Threaded plug	1	
180(181-183)	3363087286	Filling valve complete	1	
181		Filling valve	1	
182	3360478426	Threaded plug	1	
183	3360175125	O-ring	1	
190(191-192)	3363103835	Tensioning bolt complete	4	
191		Tensioning bolt	1	
192	3363093653	Washer	1	

Comments for Page: Percussion unit part 1: cylinder cover

(L)OCAL REMARKS

A | with item 170 - 176

B | AutoControl

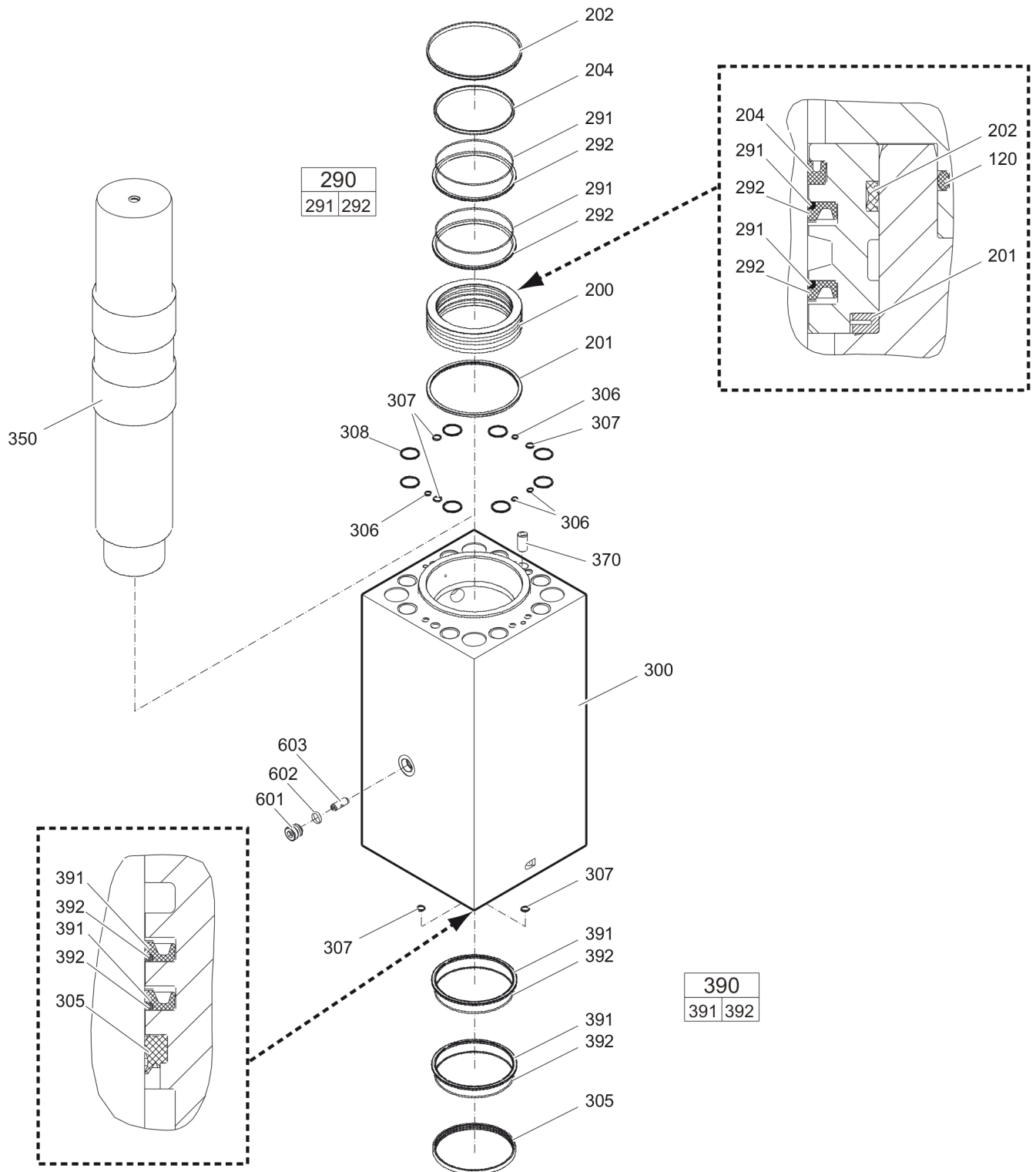
C | PowerAdapt

Only in exchange for the part to be replaced. Consult the Atlas Copco Customer Center/Dealer in your area.

D | each fastening screw with 3 o-rings item 162

E | 12 o-rings for all 4 fastening screws item 161

This page intentionally left blank

Mechanical Percussion unit part 2: cylinder

Item	Part No.	Name	Qty	L
200	3363105017	Seal bush	1	
201	3363105019	Ring	1	
202	3363103874	Seal	1	
204	3363103804	Seal	1	
290(291-292)	3363103837	Seal kit	2	
291		Back-up ring	1	
292		Seal	1	
300	3363103815	Cylinder	1	A
305	3363103805	Wiper	1	
306	3362267583	Stircomatic	4	
307	3362267585	Seal	1	
308	3362267589	Seal	8	
350	3363103828	Percussion piston	1	
370	3360921413	Lock pin	1	
390(391-392)	3363103838	Seal kit	2	
391		Seal	1	
392		Back-up ring	1	
601	3363082593	Plug	1	
602	3363083245	O-ring	1	
603	3363082505	Valve	1	B

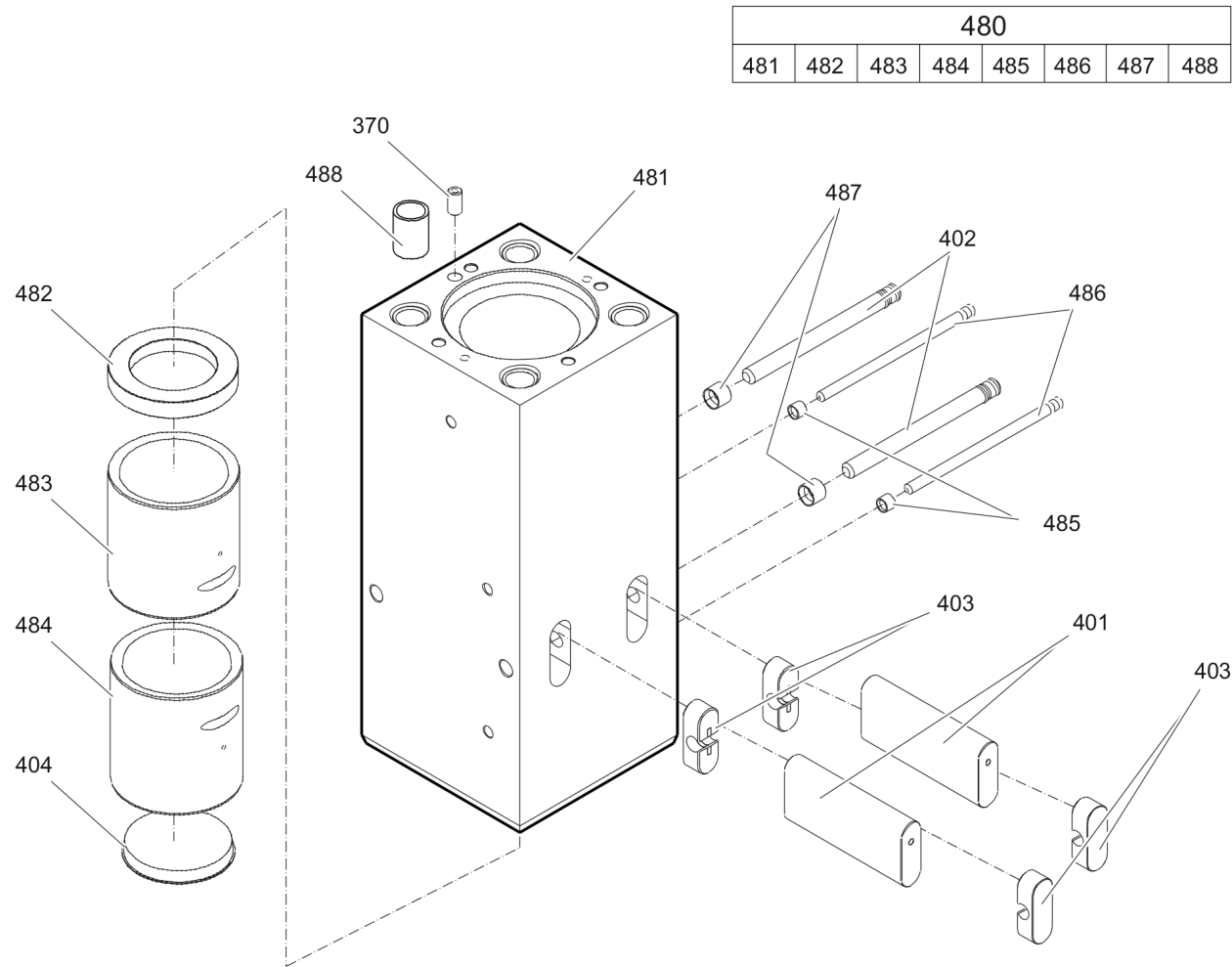
Comments for Page: Percussion unit part 2: cylinder

(L)OCAL REMARKS

A | with items 601 - 603

B | StartSelect

Mechanical Percussion unit part 3: lower breaker part (steel)



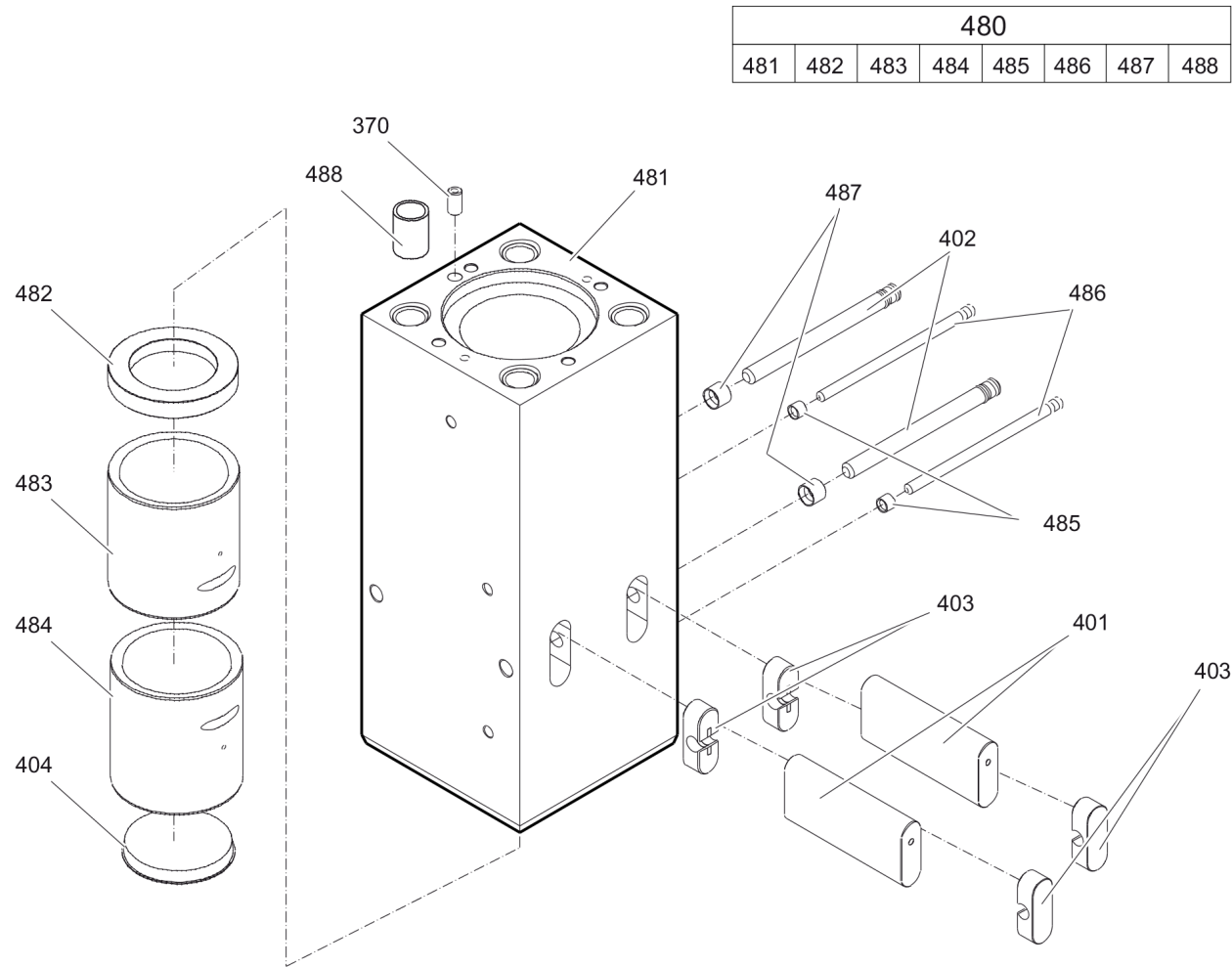
Item	Part No.	Name	Qty	L
370	3360921413	Lock pin	1	
401	3361331529	Retainer bar	2	
402	3362261540	Bolt	2	
403	3362262921	Plug	4	
404	3363103806	Protective cap	1	
480(481-488)	3363103818	Lower breaker part complete with lower wear bush steel	1	A
481		Lower breaker part	1	
482	3363105037	Impact ring	1	
483	3363105039	Wear bush	1	
484	3363105041	Wear bush (steel)	1	
485	3361854363	Locking bush	2	
486	3363105043	Bolt	2	
487	3362260433	Locking bush	2	
488	3363085321	Threaded insert	4	

Comments for Page: Percussion unit part 3: lower breaker part (steel)

(L)OCAL REMARKS

A | Note: When ordering a lower breaker part for DustProtector version it is imperative to order additionally the base for wiper (item 18) and the wiper (item 19).

Mechanical Percussion unit part 3: lower breaker part (bronze)



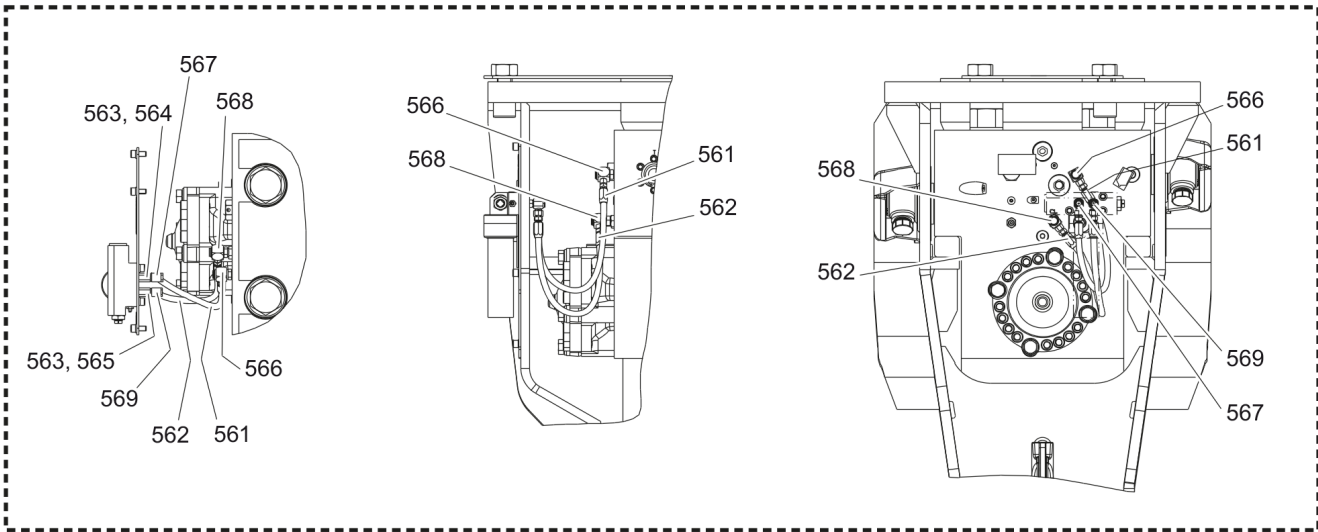
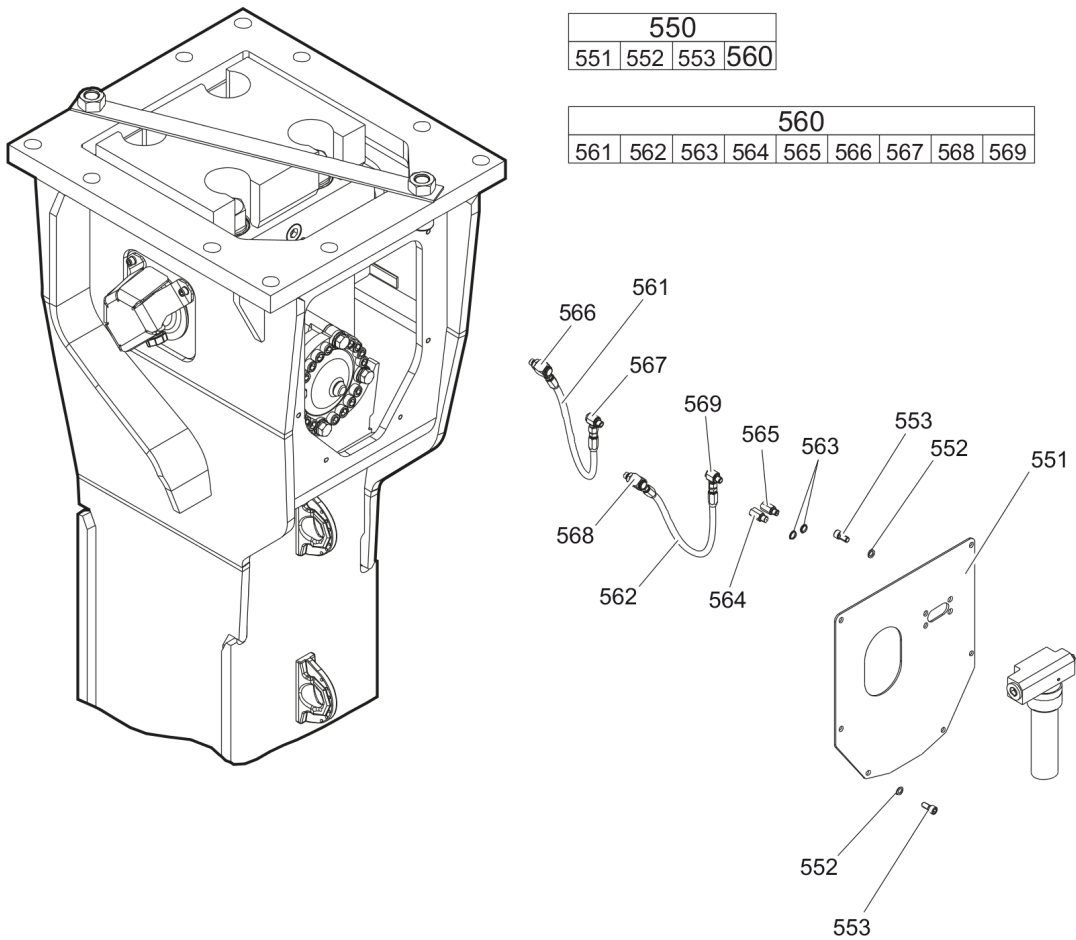
Item	Part No.	Name	Qty	L
370	3360921413	Lock pin	1	
401	3361331529	Retainer bar	2	
402	3362261540	Bolt	2	
403	3362262921	Plug	4	
404	3363103806	Protective cap	1	
480(481-488)	3363116910	Lower breaker part complete with lower wear bush bronze	1	A
481		Lower breaker part	1	
482	3363105037	Impact ring	1	
483	3363105039	Wear bush	1	
484	3363105051	Wear bush (bronze)	1	
485	3361854363	Locking bush	2	
486	3363105043	Bolt	2	
487	3362260433	Locking bush	2	
488	3363085321	Threaded insert	4	

Comments for Page: Percussion unit part 3: lower breaker part (bronze)

(L)OCAL REMARKS

A | Note: When ordering a lower breaker part for DustProtector version it is imperative to order additionally the base for wiper (item 18) and the wiper (item 19).

Mechanical Connecting kit for automatic lubrication system



Item	Part No.	Name	Qty	L
550(551-560)		Connecting kit for automatic lubrication system	1	
551	3363094863	Support	1	
552	3361850596	Pair of lock washers	10	
553	3360103750	Allen screw	10	A
560(561-569)	3363118209	Connecting kit for automatic lubrication system	1	B
561	3363083879	Hydraulic hose	1	C
562	3363083876	Hydraulic hose	1	D
563	3363066951	Seal	2	
564	3363068745	Adapter	1	E
565	3363066887	Adapter	1	E
566	3363087185	Fitting	1	E
567	3363066234	Fitting	1	E
568	3363087186	Fitting	1	E
569	3363066233	Fitting	1	E

Comments for Page: Connecting kit for automatic lubrication system

(L)OCAL REMARKS

A | secure all 4 Allen screws screwed in the automatic lubrication system with Loctite 243

B | without fastening elements

C | Oil line

secure with Loctite 243

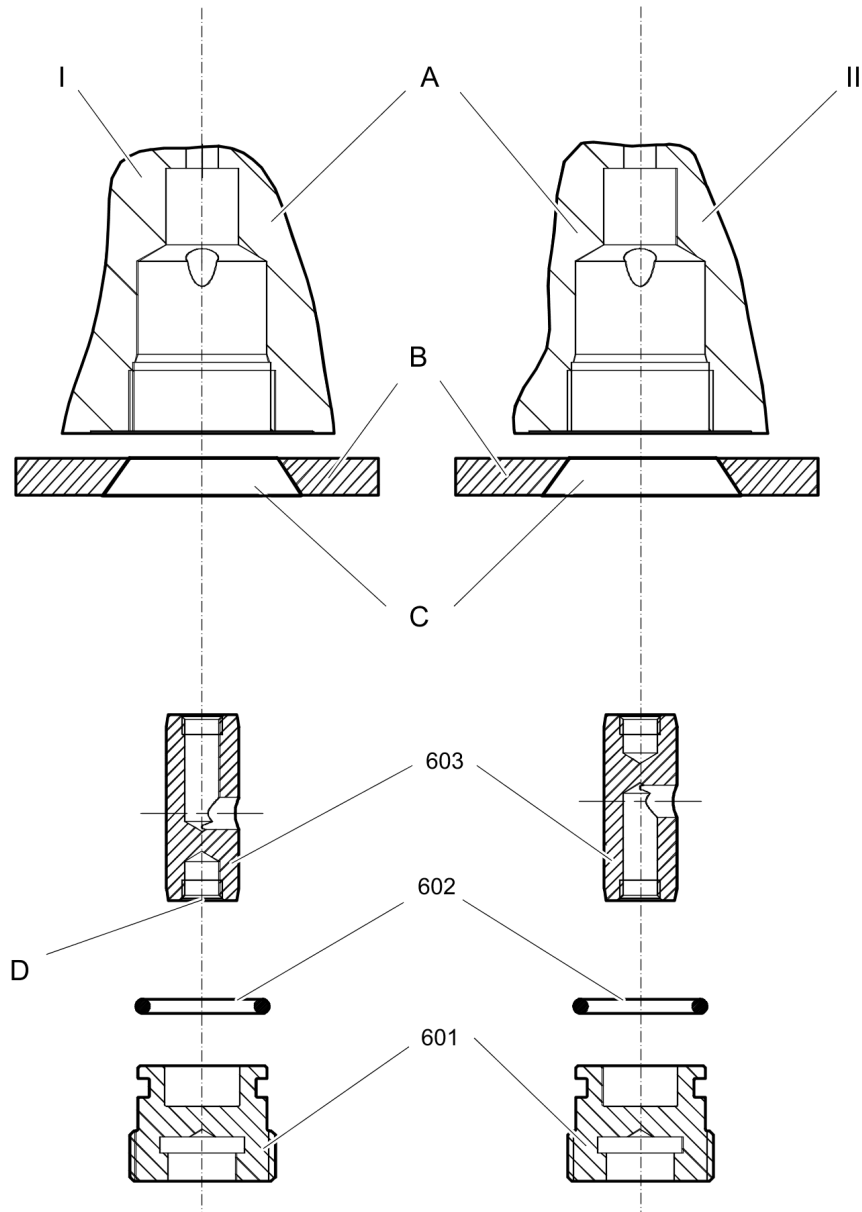
Route the hydraulic hoses as shown on the drawing. It must be ensured that the hydraulic hoses can move freely and are not in contact at any point.

D | Grease line

secure with Loctite 243

Route the hydraulic hoses as shown on the drawing. It must be ensured that the hydraulic hoses can move freely and are not in contact at any point.

E | secure with Loctite 243

Mechanical StartSelect - AutoStart or AutoStop

Item	Part No.	Name	Qty	L
601	3363082593	Plug	1	
602	3363083245	O-ring	1	
603	3363082505	Valve	1	A

Comments for Page: StartSelect - AutoStart or AutoStop

I = AutoStop setting

II = AutoStart setting (standard setting on delivery)

A. Port bore in cylinder

B. Wall of breaker box

C. Plug of breaker box

D. M 10 thread (both ends) for mounting

The position of the StartSelect unit is shown on the percussion unit illustrations.

(L)OCAL REMARKS

A | StartSelect

Mechanical Optional parts

NO EXPLODED VIEW
AVAILABLE
FOR THIS BOM

Item	Part No.	Name	Qty	L
11	3363104423	Floating ring (steel)	1	
484	3363105041	Wear bush (steel)	1	
484	3363105051	Wear bush (bronze)	1	

Mechanical Tightening torque

NO EXPLODED VIEW
AVAILABLE
FOR THIS BOM

Item	Part No.	Name	Qty	L
39	-	Allen screw - 85 Nm	-	A
104	-	Allen screw - 380 Nm	-	B
107	-	Threaded plug - 300 Nm	-	C
110	-	Threaded plug - 300 Nm	-	D
130	-	Non-return valve - 200 Nm	-	E
139	-	Allen screw - 80 Nm	-	A
161	-	Fastening screw -	-	F
181	-	Filling valve - 130 Nm	-	G
182	-	Threaded plug - 20 Nm	-	H
191	-	Tensioning bolt -	-	I
553	-	Allen screw - 85 Nm	-	A
561	-	Hydraulic hose - 42 Nm	-	J
562	-	Hydraulic hose - 16 Nm	-	K
564	-	Adapter - 55 Nm	-	J
565	-	Adapter - 45 Nm	-	J
566	-	Fitting - 60 Nm	-	L
567	-	Fitting - 55 Nm	-	M
568	-	Fitting - 50 Nm	-	N
569	-	Fitting - 45 Nm	-	O
601	-	Plug - 200 Nm	-	B

Comments for Page: Tightening torque

(L)OCAL REMARKS

A | Allen key size 10

B | Allen key size 17

C | Allen key size 22

D | Socket spanner size 24

E | Jaw spanner size 41

F | Socket spanner size 30

1. Treat the threads and threaded inserts for the fastening screws with an Anti-Seize agent.
2. Treat the surfaces between the fastening screw head, washer, and HP-accumulator cover with Anti-Seize.
3. Place on the HP-accumulator, and tighten the fastening screws by hand in a crosswise fashion.
4. Pretighten the fastening screws to 80 Nm, proceeding in a crosswise fashion,
5. then tighten each fastening screw through 30° in a crosswise fashion,
6. finally tighten each fastening screw again through 60° in a crosswise fashion.

G | Socket spanner size 22

H | Allen key size 5

I | Torque wrench or Power wrench size 75

1. Pretighten the tensioning bolts to 500 Nm, proceeding in a crosswise fashion,
2. then tighten each tensioning bolt through 180° (3 sides of hexagonal head) in a crosswise fashion,
3. finally tighten each tensioning bolt again through 120° (2 sides of hexagonal head) in a crosswise fashion.

J | Open-ended wrench size 19

K | Open-ended wrench size 17

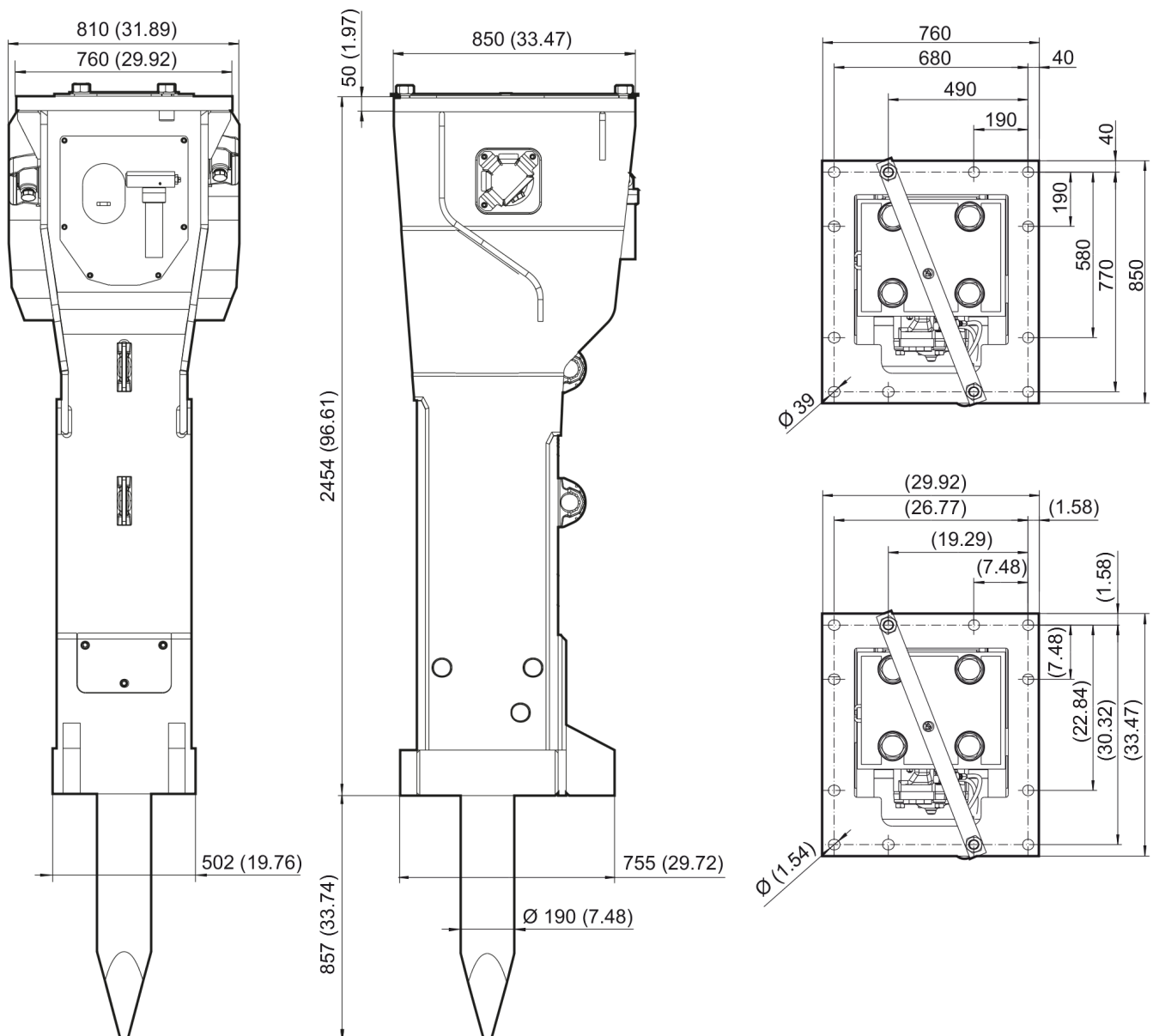
L | Open-ended wrench size 19, 22, 27

M | Open-ended wrench size 19, 22

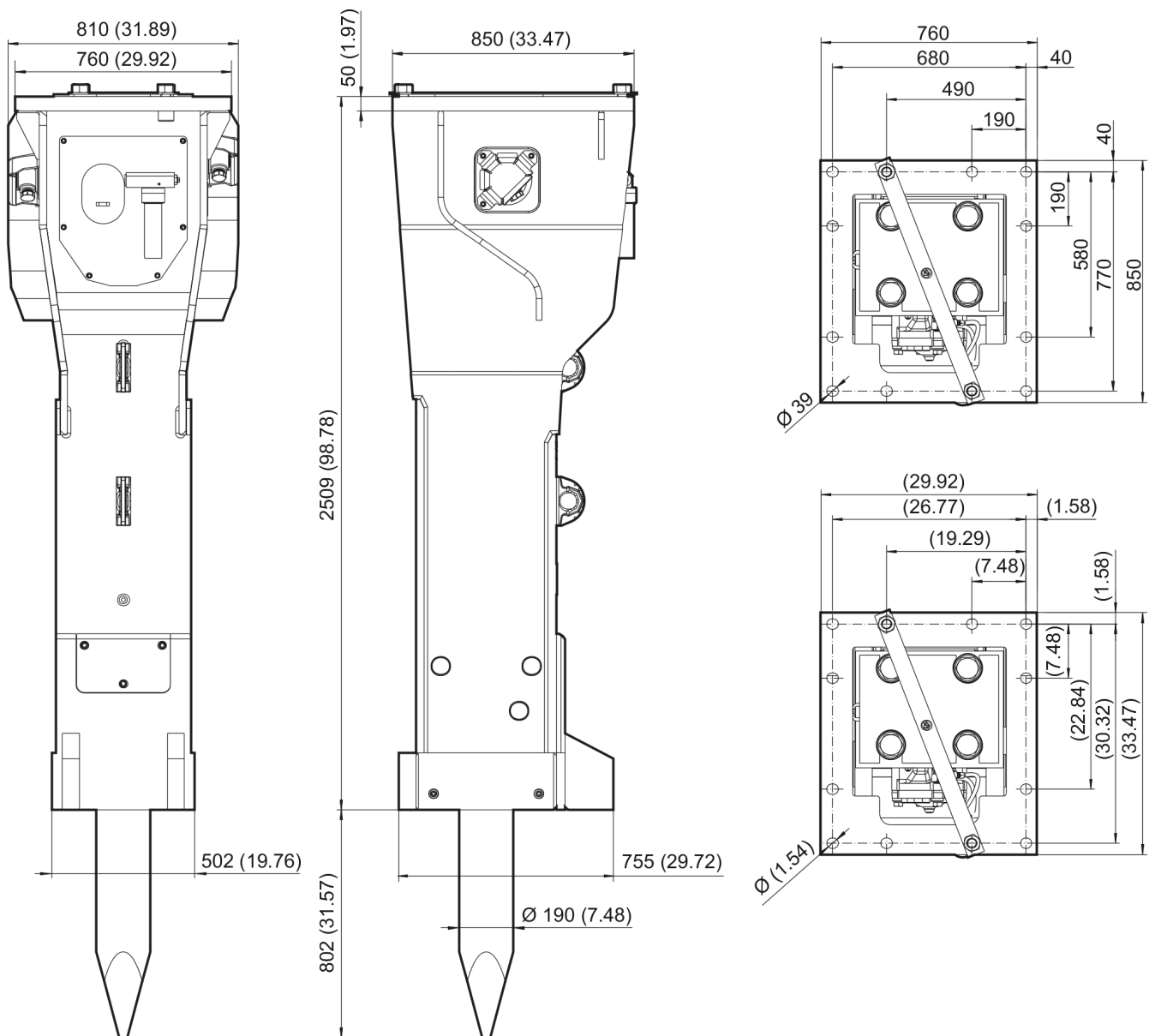
N | Open-ended wrench size 17, 22, 27

O | Open-ended wrench size 17, 19, 22

This page intentionally left blank

Mechanical Dimensions HB 4700

This page intentionally left blank

Mechanical Dimensions HB 4700 DP

This page intentionally left blank

Options / accessories Hydraulic hoses

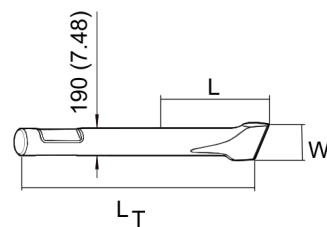
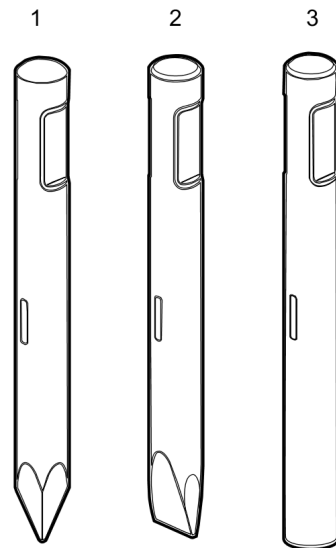
NO EXPLODED VIEW
AVAILABLE
FOR THIS BOM

Item	Part No.	Name	Qty	L
-	3361853860	Hydraulic hose, I.D. 32 (1 1/4"), both ends JIC 1 5/8", length 2800 mm (110 in.)	2	
-	3361853861	Hydraulic hose, I.D. 32 (1 1/4"), both ends JIC 1 5/8", length 3500 mm (138 in.)	2	

Options / accessories Optional equipment

NO EXPLODED VIEW
AVAILABLE
FOR THIS BOM

Item	Part No.	Name	Qty	L
-	3363091200	Chisel paste cartridge, 12 x 500 g (1.1 lbs)	1	
-	3363034567	Grease gun for 500 g cartridge	1	
-	3360433774	Grease nipple	1	
-	3363089845	Service box no. II with nitrogen cylinder, 5 l, 1.1 gal (1.32 US gal)	1	
-	3363094940	Service box without nitrogen cylinder	1	
-	3363104733	Test gauge lower wear bush	1	
-	3363094952	Inside callipers upper wear bush	1	
Not Shown	-	Adapter plate matching the carrier. Consult the Atlas Copco Customer Center/Dealer in your area.	1	
-	3363104727	Base plate with threaded inserts	1	
-	3363087304	Bolt kit	1	
-	3363104725	Base plate with through borings	1	
-	3363094576	Bolt kit	1	
-	3360478949	Allen key (27 mm)	1	
-	3363090531	Adapter kit for underwater applications	1	
-	3363105061	Piston retainer	1	

Options / accessories Working tools ClassicLine HB 4700

Item	Part No.	Name	Qty	L
1	3363103845	Moil point	1	A
1	3363103846	Moil point	1	B
2	3363103848	Chisel (cross)	1	C
2	3363103849	Chisel (cross)	1	D
3	3363103843	Blunt tool	1	E
3	3363105055	Blunt tool	1	F

Comments for Page: Working tools ClassicLine HB 4700

(L)OCAL REMARKS

A | L=660 mm, LT=1450 mm, Wt=277.0 kg

L=25.98 inch, LT=57.09 inch, Wt=610.7 lb

B | L=860 mm, LT=1650 mm, Wt=322.0 kg

L=33.86 inch, LT=64.96 inch, Wt=709.9 lb

C | W=190 mm, L=660 mm, LT=1450 mm, Wt=290.0 kg

W=7.48 inch, L=25.98 inch, LT=57.09 inch, Wt=639.3 lb

D | W=190 mm, L=860 mm, LT=1650 mm, Wt=335.0 kg

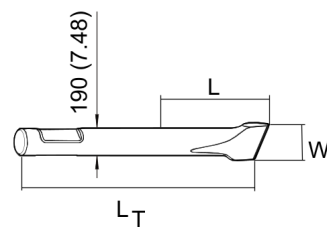
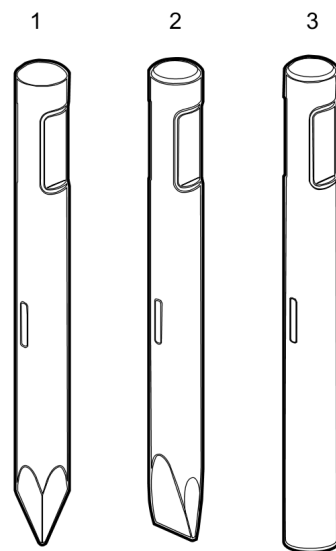
W=7.48 inch, L=33.86 inch, LT=64.96 inch, Wt=738.6 lb

E | L=660 mm, LT=1450 mm, Wt=313.0 kg

L=25.98 inch, LT=57.09 inch, Wt=690.1 lb

F | L=860 mm, LT=1650 mm, Wt=358.0 kg

L=33.86 inch, LT=64.96 inch, Wt=789.3 lb

Options / accessories Working tools SilverLine HB 4700

Item	Part No.	Name	Qty	L
1	3363103853	Moil point	1	A
2	3363103854	Chisel (cross)	1	B
3	3363105059	Blunt tool	1	C

Comments for Page: Working tools SilverLine HB 4700

(L)OCAL REMARKS

A | L=860 mm, LT=1650 mm, Wt=322.0 kg

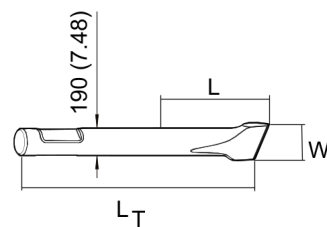
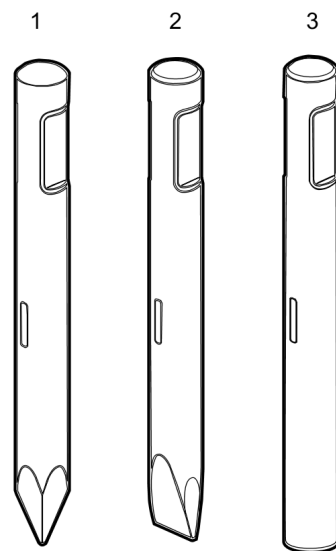
L=33.86 inch, LT=64.96 inch, Wt=709.9 lb

B | W=190 mm, L=860 mm, LT=1650 mm, Wt=335.0 kg

W=7.48 inch, L=33.86 inch, LT=64.96 inch, Wt=738.6 lb

C | L=860 mm, LT=1650 mm, Wt=358.0 kg

L=33.86 inch, LT=64.96 inch, Wt=789.3 lb

Options / accessories Working tools ClassicLine HB 4700 DP

Item	Part No.	Name	Qty	L
1	3363103845	Moil point	1	A
1	3363103846	Moil point	1	B
2	3363103848	Chisel (cross)	1	C
2	3363103849	Chisel (cross)	1	D
3	3363103843	Blunt tool	1	E
3	3363105055	Blunt tool	1	F

Comments for Page: Working tools ClassicLine HB 4700 DP

(L)OCAL REMARKS

A | L=605 mm, LT=1450 mm, Wt=277.0 kg

L=23.82 inch, LT=57.09 inch, Wt=610.7 lb

B | L=805 mm, LT=1650 mm, Wt=322.0 kg

L=31.69 inch, LT=64.96 inch, Wt=709.9 lb

C | W=190 mm, L=605 mm, LT=1450 mm, Wt=290.0 kg

W=7.48 inch, L=23.82 inch, LT=57.09 inch, Wt=639.3 lb

D | W=190 mm, L=805 mm, LT=1650 mm, Wt=335.0 kg

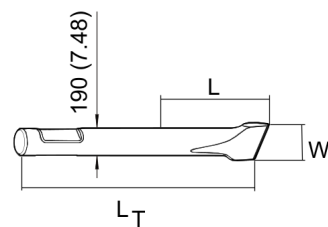
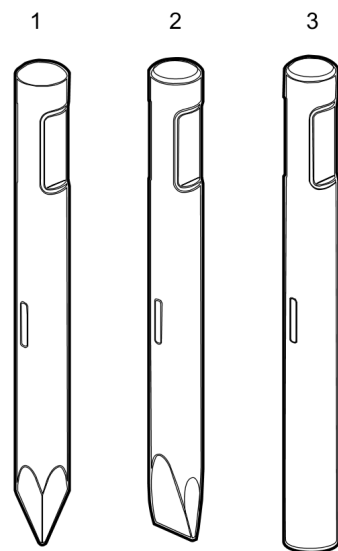
W=7.48 inch, L=31.69 inch, LT=64.96 inch, Wt=738.6 lb

E | L=605 mm, LT=1450 mm, Wt=313.0 kg

L=23.82 inch, LT=57.09 inch, Wt=690.1 lb

F | L=805 mm, LT=1650 mm, Wt=358.0 kg

L=31.69 inch, LT=64.96 inch, Wt=789.3 lb

Options / accessories Working tools SilverLine HB 4700 DP

Item	Part No.	Name	Qty	L
1	3363103853	Moil point	1	A
2	3363103854	Chisel (cross)	1	B
3	3363105059	Blunt tool	1	C

Comments for Page: Working tools SilverLine HB 4700 DP

(L)OCAL REMARKS

A | L=805 mm, LT=1650 mm, Wt=322.0 kg

L=31.69 inch, LT=64.96 inch, Wt=709.9 lb

B | W=190 mm, L=805 mm, LT=1650 mm, Wt=335.0 kg

W=7.48 inch, L=31.69 inch, LT=64.96 inch, Wt=738.6 lb

C | L=805 mm, LT=1650 mm, Wt=358.0 kg

L=31.69 inch, LT=64.96 inch, Wt=789.3 lb

Any unauthorized use or copying of the contents or any part thereof is prohibited.
This applies in particular to trademarks, model denominations, part numbers, and drawings.

