

# **SBU 220 s/n BES000001 - BES055534**

Spare parts list: Hydraulic breakers

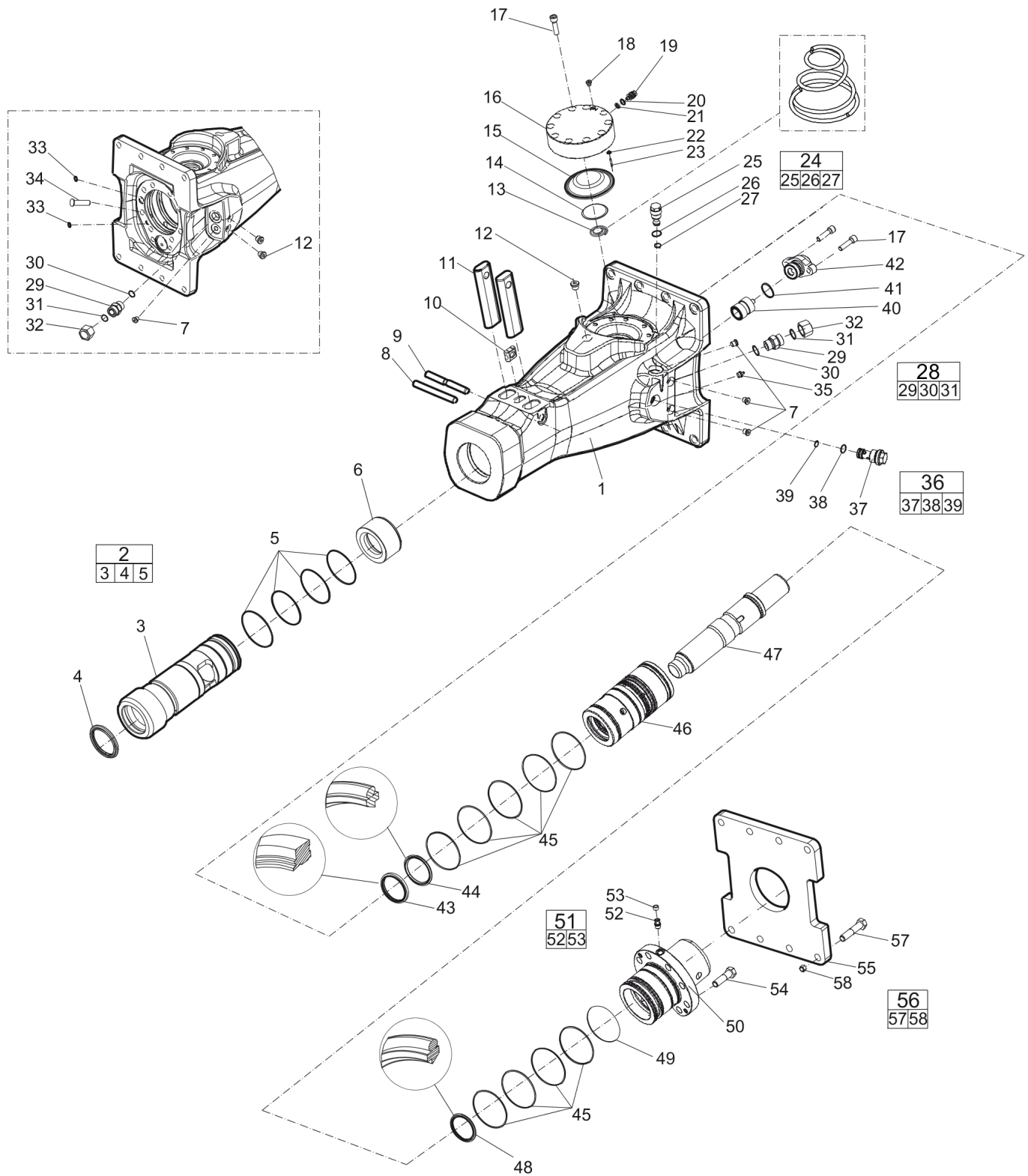
Kits and consumables .....	1
<b>Spare parts list</b>	
Spare parts list .....	3
Optional parts - Bushing oversize, complete .....	6
Optional parts - Restrictor, complete .....	9
<b>Tightening torque</b>	
Tightening torque .....	11
<b>Working tools</b>	
Working tools ClassicLine .....	13
Working tools ProLine .....	15
<b>Accessories</b>	
Optional equipment .....	17
Hydraulic hoses .....	19
<b>Kits</b>	
Label kit .....	21
Seal kit .....	23
Lower hammer part kit .....	25
Accumulator repair kit .....	27
<b>Dimensions</b>	
Dimensions (mm) .....	29



<b>Service offers resume SBU220</b>	<b>Item</b>	<b>Description</b>
<b>Lubricants</b>	1	Chisel paste cartridge (for manual greasing)
	2	Chisel paste cartridge for ContiLube® II Micro
<b>Main wear part</b>	3	Impact ring
	4	Lock buffer
	5	Lock pin
	6	Retainer bar
	7	Wear bush
<b>Rebuild&amp;Overhaul kits</b>	8	Label kit
<b>Start-Up Kits</b>	9	Start-Up Kit Blunt
	10	Start-Up Kit Chisel (cross)
	11	Start-Up Kit Chisel (X-Profile)
	12	Start-Up Kit Moil point
	13	Start-Up Kit Moil point (X-Profile)
<b>Wear&amp;Repair Kits</b>	14	ACC umulator repair kit
	15	Lower breaker part kit
	16	Seal kit

Item	Part No.	Name	Qty	Remarks	Reman No.	L
1	3363094913	CHISEL PASTE CARTRIDGE FOR GREASE GUN, 12 x 400 g (12 x 0.88 lbs)	1			
2	3363106447	CHISEL PASTE CATRIDGE, 20 x 150 g (20 x 0.33 lb)	1			
3	3315277800	STOP RING	1			
4	3315141900	LOCK BUFFER	1			
5	3315135000	LOCK PIN	1			
6	3315134900	RETAINER BAR	1			
7	3315354080	BUSHING STANDARD, complete	1			
8	3315373590	LABEL KIT	1			
9	3382070052	Start-Up Kit Blunt	1			
10	3382070050	Start-Up Kit Chisel (cross)	1			
11	3382070051	Start-Up Kit Chisel (X-Profile)	1			
12	3382070048	Start-Up Kit Moil point	1			
13	3382070049	Start-Up Kit Moil point (X-Profile)	1			
14	3315359490	ACCUMULATOR REPAIR KIT	1			
15	3315352145	LOWER HAMMER PART KIT	1			
16	3315359090	SEAL KIT	1			

## Spare parts list



Item	Part No.	Name	Qty	Remarks	Reman No.	L
1		BREAKER BODY	1			
2	3315354080	BUSHING STANDARD, complete	1			
3	--	Bushing, Ø90 mm, Ø3.54 in.	1			
4	3315356200	SCRAPER RING	1			
5	0663210498	O-RING	4			
6	3315277800	STOP RING	1			
7	0686644207	PLUG	4			
8	0108169127	SPRING PIN, option	1			
9	3315135000	LOCK PIN	1			
10	3315141900	LOCK BUFFER	1			
11	3315134900	RETAINER BAR	2			
12	0686371801	PLUG	3			
13	3315359600	COIL SPRING	1			
14	3315359500	DIAPHRAGM SUPPORT	1			
15	3315289000	DIAPHRAGM	1			
16	3315359400	ACCUMULATOR HOUSE	1			
17	0211196534	HEX SOCK. SCREW	12			
18	0686371805	PLUG	1			
19	3315366000	VALVE	1			
20	0663212000	O-RING	1			
21	3115329002	SEAL RING	1			
22	0663211400	O-RING	1			
23	0101414000	PIN	1			
24	3315335000	PRESSURE RELIEF VALVE, complete	1			
25		PRESSURE RELIEF VALVE	1			
26	0663903201	O-RING	1			
27	0663905401	O-RING	1			
28	0580001845	NIPPLE, complete	1			
29	--	FITTING	1			
30	0664000004	SEAL RING	1			
31	0663210217	O-RING				
32	0570700010	CAP	2			
33	0665090014	SEAL RING	2			
34	3315301100	PLUG	1			
35	3363070299	GREASE NIPPLE	1			
36	3315369551	RESTRICTOR STANDARD, complete	1			

Item	Part No.	Name	Qty	Remarks	Reman No.	L
37	--	Restrictor, standard, Ø5.1 mm, Ø0.2 in.	1			
38	0663903201	O-RING	1			
39	0663905401	O-RING	1			
40	3315362400	CONTROL VALVE	1			
41	0663990033	SEAL	1			
42	3315362900	VALVE COVER	1			
43	0665909956	WIPER	1			
44	0665070130	PISTON ROD SEAL	1			
45	0663990036	SEAL RING	9			
46	3315352120	Lower hammer part kit	1			
47	3315359110	PISTON	1			
48	0665070129	PISTON ROD SEAL	1			
49	0663211516	O-RING	1			
50	3315359300	BACK HEAD	1			
51	3315244881	CHECK VALVE, complete	1			
52		CHECK VALVE	1			
53	3315280800	VALVE RUBBER	1			
54	3315431201	HEXAGON BOLT	8			
55	3315295100	BASE PLATE	1			
56	3315296490	BOLT KIT	1			
57	--	Screw, M16 x 75 mm 8.8	8			
58		NUT	8			

Comments for Page: Spare parts list

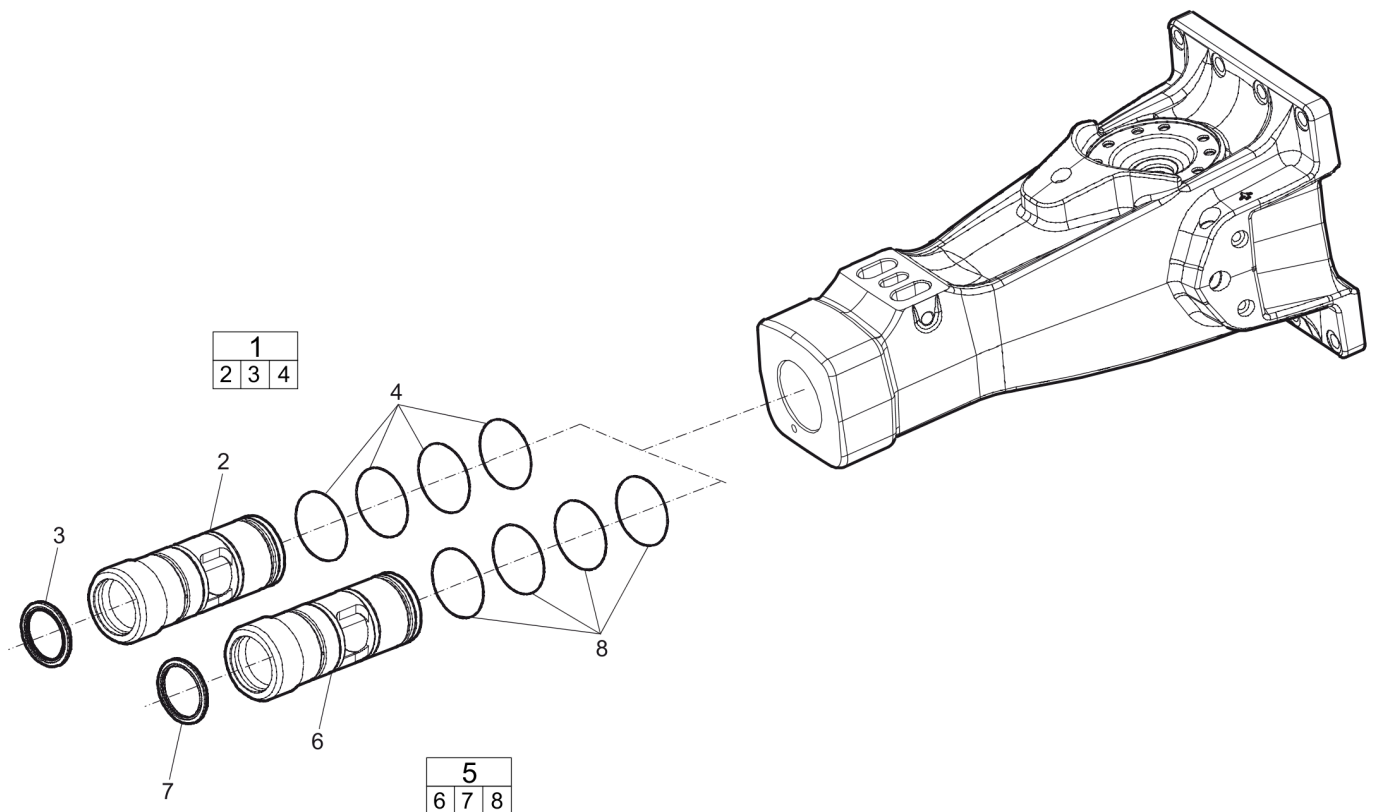
A | See Service bulletin SBBES 0028 (must buy new liner together with new piston).

B | See Service bulletin SBBES 0028 (must buy new piston together with new liner).



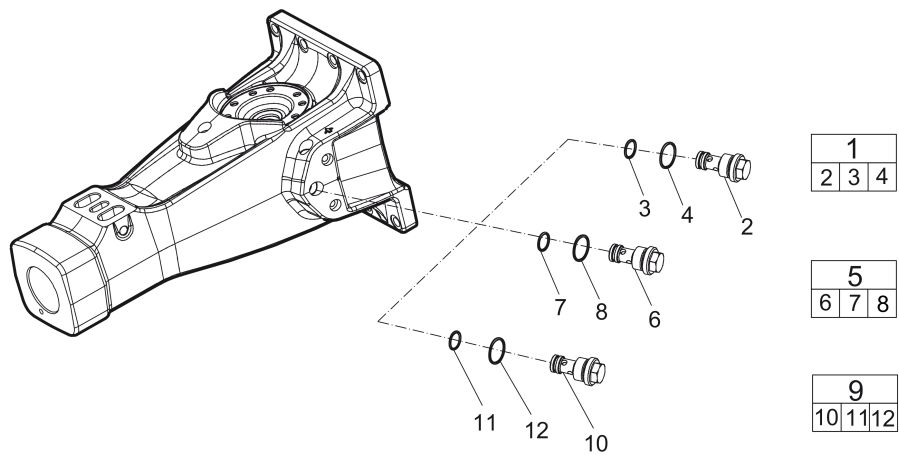
This page intentionally left blank

## Spare parts list



Item	Part No.	Name	Qty	Remarks	Reman No.	L
1	3315354060	BUSHING OVERSIZE, complete	1			
2	--	Bushing, Ø 91.5 mm , Ø 3.6 in.	1			
3	3315356200	SCRAPER RING	1			
4	0663210498	O-RING	4			
5	3315354063	BUSHING OVERSIZE, complete	1			
6	--	Bushing, Ø 93 mm, Ø 3.66 in.	1			
7	3315356200	SCRAPER RING	1			
8	0663210498	O-RING	4			

## Spare parts list



Item	Part No.	Name	Qty	Remarks	Reman No.	L
1	3315369540	RESTRICTOR, complete	1			
2	--	Restrictor, Ø 4.0 mm, Ø 0.16 in.	1			
3	0663903201	O-RING	1			
4	0663905401	O-RING	1			
5	3315369535	RESTRICTOR, complete	1			
6	--	Restrictor, Ø 4.5 mm, Ø 0.18 in.	1			
7	0663903201	O-RING	1			
8	0663905401	O-RING	1			
9	3315369555	RESTRICTOR, complete	1			
10	--	Restrictor, Ø 7.0 mm, Ø 0.28 in.	1			
11	0663903201	O-RING	1			
12	0663905401	O-RING	1			

Tightening torque

NO EXPLODED VIEW  
AVAILABLE  
FOR THIS BOM

Item	Part No.	Name	Qty	Remarks	Reman No.	L
7	-	PLUG - 30 Nm (22 ft lbf)	-			A
12		HEXAGON SOCKET PLUG - 80 Nm (59 ft lbf)	-			B
17		HEXAGON SOCKET PLUG - 120 Nm (89 ft lbf)	-			C
18		PLUG - 20 Nm (15 ft lbf)	-			
19	-	Charge valve - 20 Nm	-			
25	-	PRESSURE RELIEF VALVE - 80 Nm (59 ft lbf)	-			
29		FITTING - 120 Nm (89 ft lbf)	-			
35	-	GREASE NIPPLE - 30 Nm (22 ft lbf)	-			
52	-	CHECK VALVE - 30 Nm (22 ft lbf)	-			I
54	-	Hexagon head screw - 180 Nm	-			J
58	-	Nut - 170 Nm	-			

Comments for Page: Tightening torque

LOCTITE is a registered trademark of Henkel Corporation. 243 is a trademark of Henkel Corporation. Molykote is a registered trademark of Dow Corning Corporation.

(L)OCAL REMARKS

A | LOCTITE® 243™

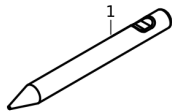
B | LOCTITE® 243™

C | Molykote®

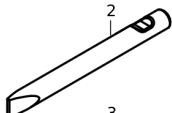
I | LOCTITE® 243™

J | Molykote®

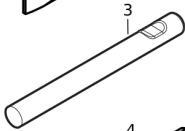
## Working tools



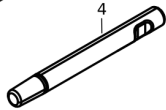
L=330 mm, LT=630 mm, Wt=13 kg  
L=12.99 inch, LT=24.8 inch, Wt= 28.66 lb



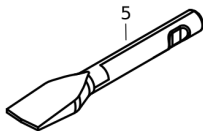
W= 65 mm, L=330 mm, LT=630 mm, Wt=14 kg  
W=2.56 inch, L= 12.99 inch, LT=24.8 inch, Wt=30.86 lb



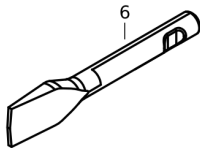
L=330 mm, LT=630 mm, Wt=15 kg  
L=12.99 inch, LT=24.8 inch, Wt=33.07 lb



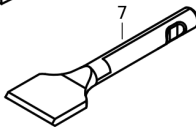
LT=630 mm, Wt=21 kg  
LT=24.8 inch, Wt=46.3 lb



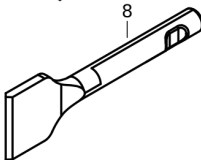
W=130 mm, L=350 mm, LT=650 mm, Wt=16 kg  
W=5.12 inch, L=13.78 inch, LT=25.6 inch, Wt=35.27 lb



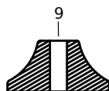
W=130 mm, L=350 mm, LT=650 mm, Wt=16kg  
W=5.12 inch, L=13.78 inch, LT=25.6 inch, Wt=35.27 lb



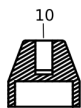
W=140 mm, L=350 mm, LT=650 mm, Wt=16 kg  
W=5.51 inch, L=13.78 inch, LT=25.6 inch, Wt=35.27 lb



W=140 mm, L=350 mm, LT=650 mm, Wt=16 kg  
W=5.51 inch, L=11.02 inch, LT=25.6 inch, Wt=35.27 lb



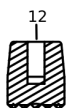
W= Ø300 mm, Wt=33 kg  
W= Ø11.81 inch, Wt=1.3 lb



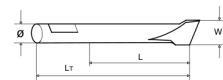
W=Ø150 mm, Wt=21 kg  
W= Ø5.9 inch, Wt=0.83 lb



W=Ø100 mm, Wt=9 kg  
W= Ø3.9 inch, Wt=0.35 lb



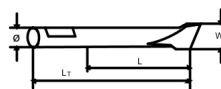
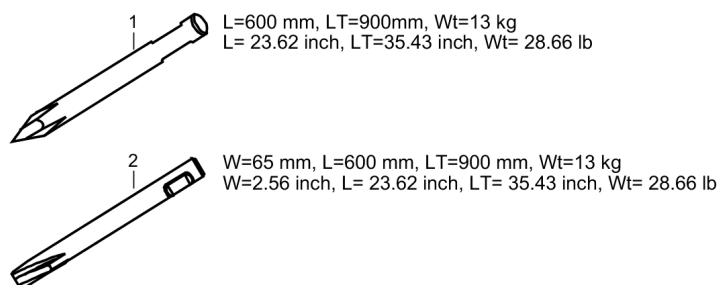
W=Ø130 , Wt=9,8 kg  
W= Ø5.1 inch, Wt=0.38 lb





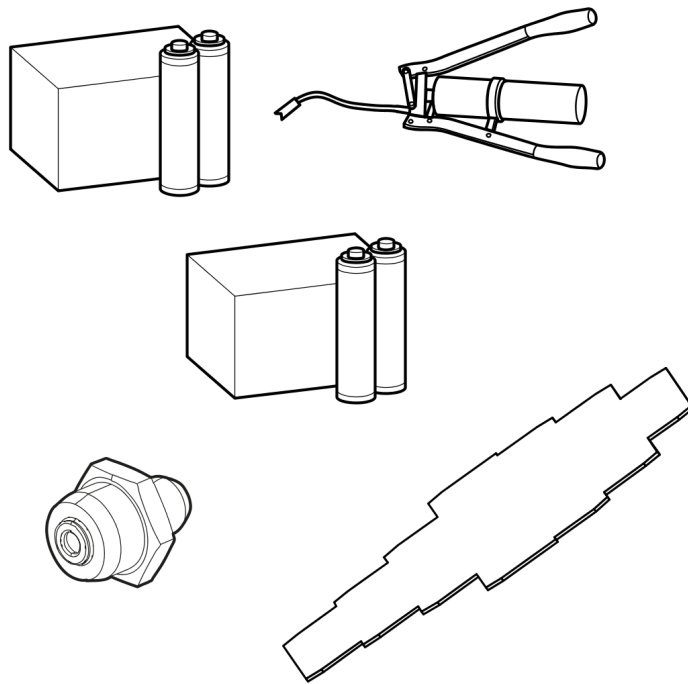
Item	Part No.	Name	Qty	Remarks	Reman No.	L
1	3083316206	MOIL POINT	1			
2	3083316105	CHISEL (cross)	1			
3	3083341105	BLUNT TOOL	1			
4	3315370205	SHAFT	1			
5	3083316300	WIDE CHISEL (cross)	1			
6	3083316700	WIDE CHISEL (parallel)	1			
7	3083340946	ASPHALT CUTTER (cross)	1			
8	3083340947	ASPHALT CUTTER (parallel)	1			
9	3315370900	TAMPING PAD (square)	1			
10	3315371700	POST DRIVER PAD (round)	1			
11	3315372300	PILE DRIVER PAD (round)	1			
12	3315373000	BUSHING PAD (round)	1			

## Working tools



Item	Part No.	Name	Qty	Remarks	Reman No.	L
1	3363120263	MOIL POINT (X-Profile)	1			
2	3363120264	CHISEL (X-profile)	1			

## Accessories



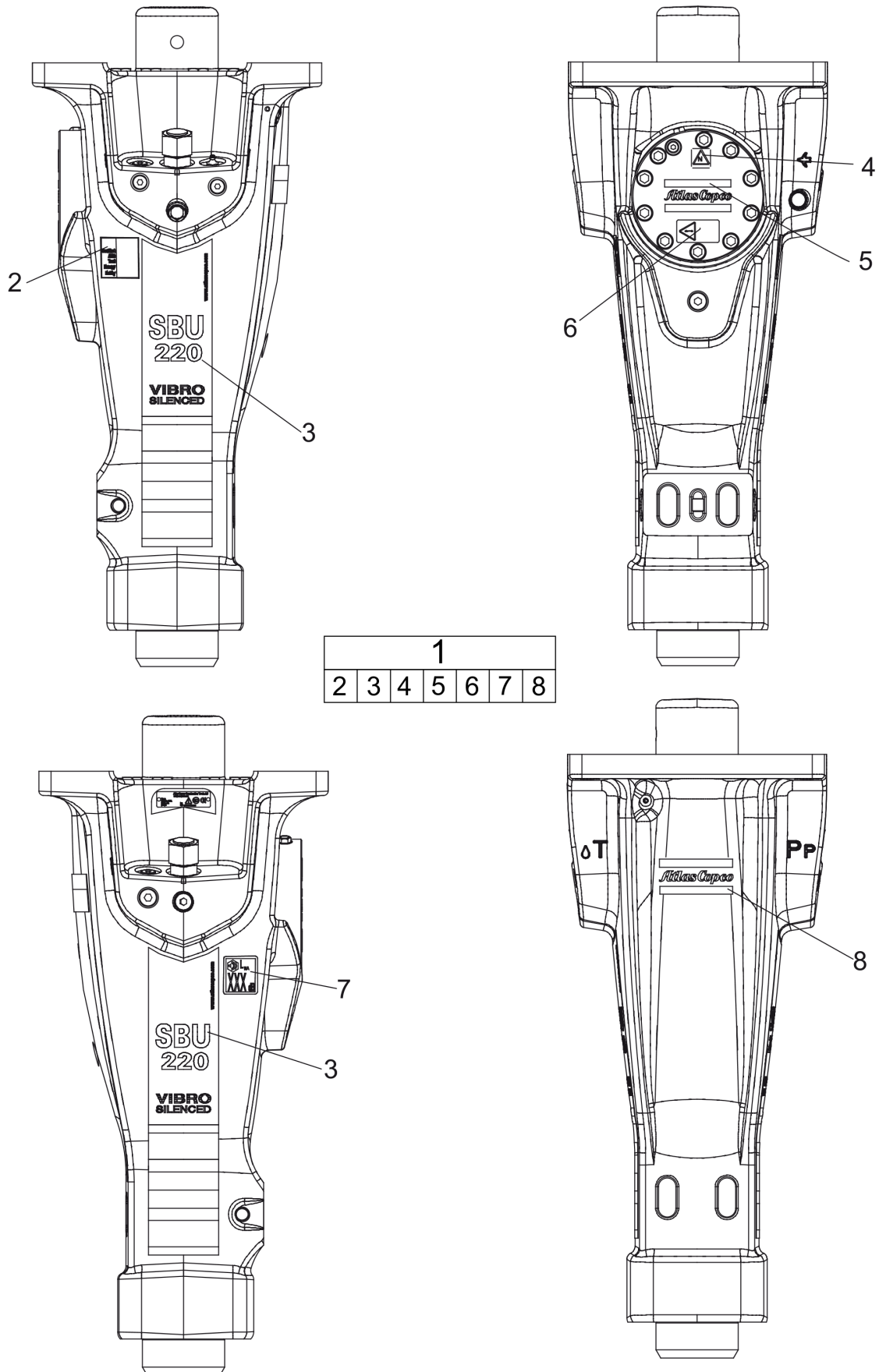
Item	Part No.	Name	Qty	Remarks	Reman No.	L
-	3315383190	CONTILUBE II MICRO	1			
-	0909107100	LUBRICAT.GUN	1			
-	3363122354	BIO CHISEL PASTE, 20 x 150 g (0.33 lbs)	1			
-	3363122355	BIO CHISEL PASTE CARTRIDGE FOR GREASE GUN, 12 x 400 g (0.88 lbs)	1			
-	3363122357	BIO CHISEL PASTE CONTAINER 15 kg (33 lbs)	1			
-	3363122358	BIO CHISEL PASTE CONTAINER 45 kg (99 lbs)	1			
-	3360920415	FILLING DEVICE, for accumulator	1			
-	3363094459	NIPPLE, for charging the accumulator	1			
-	3361329803	FILLING HOSE, for charging the accumulator	1			
-	3315353100	BUSHING WEAR CONTROLLER	1			

## Accessories

NO EXPLODED VIEW  
AVAILABLE  
FOR THIS BOM

Item	Part No.	Name	Qty	Remarks	Reman No.	L
-	3360995717	HYDRAULIC HOSE, both ends 18 L (M26 x 1.5) length 1500 mm (59 in.)	2			
-	3362235159	HYDRAULIC HOSE, both ends 18 L (M26 x 1.5) length 2000 mm (79 in.)	2			
-	3363083313	HYDRAULIC HOSE, both ends 18 L (M26 x 1.5) length 2400 mm (95 in.)	2			
-	3363098019	ADDITIONAL FITTING KIT	1			

## Kits





Item	Part No.	Name	Qty	Remarks	Reman No.	L
1	3315373590	LABEL KIT	1			
2	--	AEM label	1			
3	--	PRODUCT LABEL	2			A
4	--	SAFETY LABEL	1			
5	--	PRODUCT LABEL	1			B
6	--	SAFETY LABEL	1			
7	--	Noise level label	1			
8	--	PRODUCT LABEL	1			C

Comments for Page: Label kit

(L)OCAL REMARKS

A | "SBU 220"

B | "Atlas Copco"

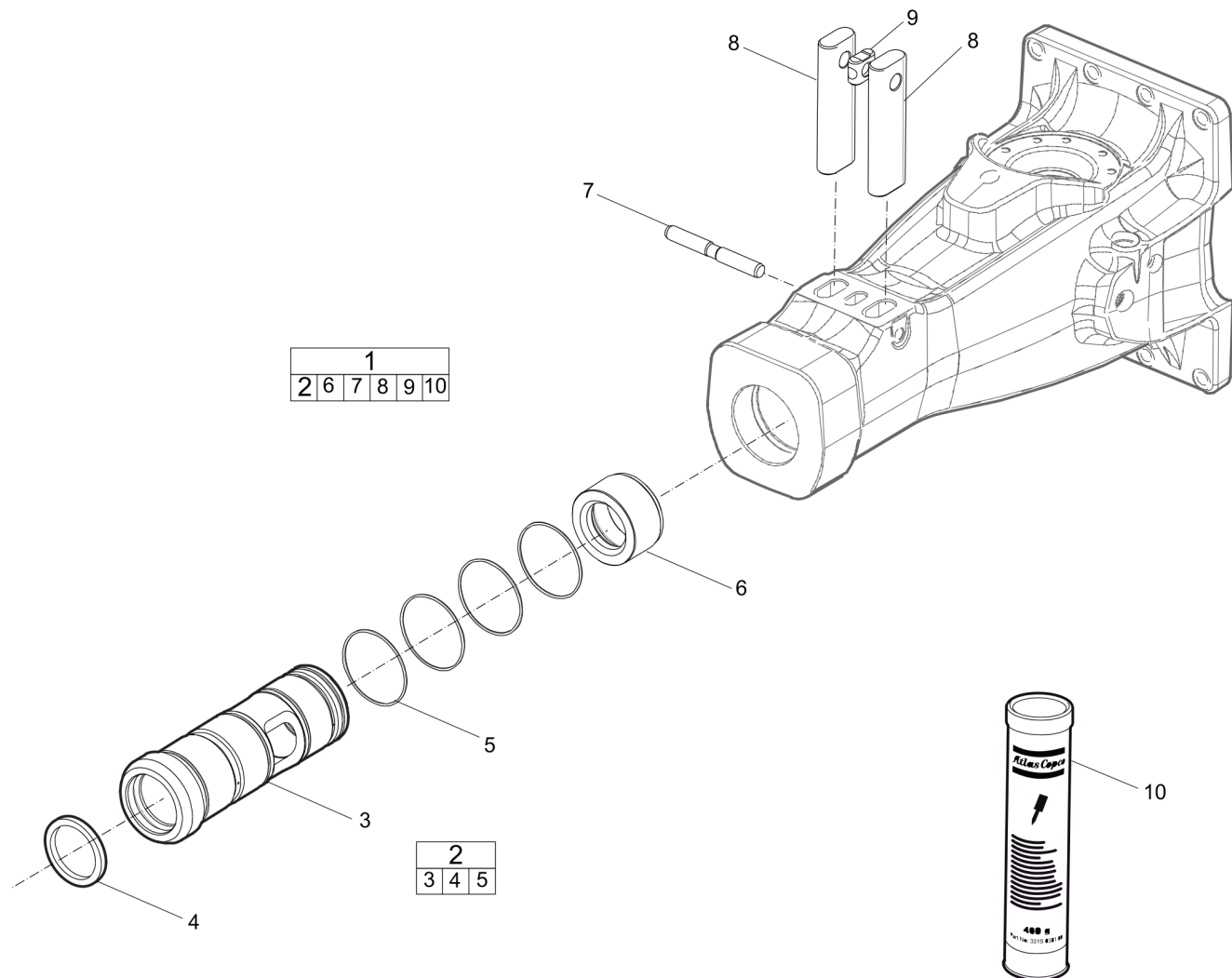
C | "Atlas Copco"

## Kits

NO EXPLODED VIEW  
AVAILABLE  
FOR THIS BOM

Item	Part No.	Name	Qty	Remarks	Reman No.	L
1	3315359090	SEAL KIT	1			
-	0663212000	O-RING	1			
-	3115329002	SEAL RING	1			
-	0663210498	O-RING	4			
-	0663211400	O-RING	1			
-	0663990036	SEAL RING	9			
-	0663990033	SEAL	1			
-	0663905401	O-RING	2			
-	0665090014	SEAL RING	2			
-	3315301100	PLUG	1			
-	0665909956	WIPER	1			
-	0665070129	PISTON ROD SEAL	1			
-	0665070130	PISTEN ROD SEAL	1			
-	3315280800	VALVE RUBBER	1			
-	0663903201	O-RING	2			
-	3315356200	SCRAPER RING	1			
-	0664000004	SEAL RING	2			
-	0663210217	O-RING	2			
-	0663211516	O-RING	1			

## Kits



Item	Part No.	Name	Qty	Remarks	Reman No.	L
1	3315352145	LOWER HAMMER PART KIT	1			
2	3315354080	BUSHING STANDARD, complete	1			
3		BUSHING	1			
4	3315356200	SCRAPER RING	1			
5	0663210498	O-RING	4			
6	3315277800	STOP RING	1			
7	3315135000	LOCK PIN	1			
8	3315134900	RETAINER BAR	2			
9	3315141900	LOCK BUFFER	1			
10	--	CHISEL PASTE CARTRIDGE	1			A

Comments for Page: Lower hammer part kit

(L)OCAL REMARKS

A | 400 g

0.88 lb

Kits

NO EXPLODED VIEW  
AVAILABLE  
FOR THIS BOM

Item	Part No.	Name	Qty	Remarks	Reman No.	L
1	3315359490	ACCUMULATOR REPAIR KIT	1			
-	3315359600	COIL SPRING	1			
-	3315359500	DIAPHRAGM SUPPORT	1			
-	3315289000	DIAPHRAGM	1			
-	3115329002	SEAL RING	1			
-	0663212000	O-RING	1			
-	3315366000	VALVE	1			
-	0663211400	O-RING	1			
-	0101414000	PIN	1			
-	0211196534	HEX SOCK. SCREW	10			A
-	0686371805	PLUG	1			B

Comments for Page: Accumulator repair kit

(L)OCAL REMARKS

A | Screw with extra high fatigue strength.

B | VSTI R 1/8 - ED

## Dimensions

