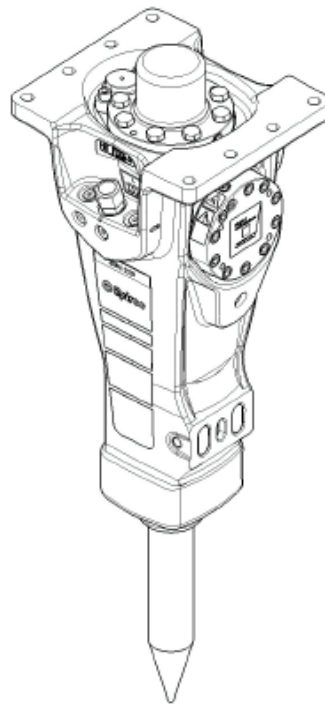


# SBU 220

---

## Spare parts list Hydraulic breakers

SBU 220 s/n BES090753 –



# General information

This spare parts list applies to the following:

Part number	Description
8460030055	SBU 220
8460030056	SBU 220 HATCON
8460030058	SBU 220 HATCON LTE

Use only authorized parts. Any damage or malfunction caused by the use of unauthorized parts is not covered by Warranty or Product Liability. Any unauthorized use or copying of the contents or any part thereof is prohibited. This applies in particular to trademarks, model denominations, part numbers, and drawings.

## Instructions for use

This spare parts list contains no safety regulations and is merely intended to assist in the ordering of spare parts. For information about operating, servicing, or repairing, the relevant Safety and operating instructions must be consulted at all costs. Please observe the safety instructions listed in the relevant Safety and operating instructions!

**Service, repair and wear part kits**

Label kit ..... 1

Seal kit ..... 3

Lower hammer part kit .....5

Accumulator repair kit ..... 7

**Mechanical**

Hydraulic breaker ..... 9

HATCON (Horizontal) ..... 12

Bushing oversize, complete ..... 15

Restrictor, complete ..... 17

Tightening torque ..... 19

Dimensions (mm) ..... 21

**Options/accessories**

Hydraulic hoses ..... 22

Optional equipment ..... 25

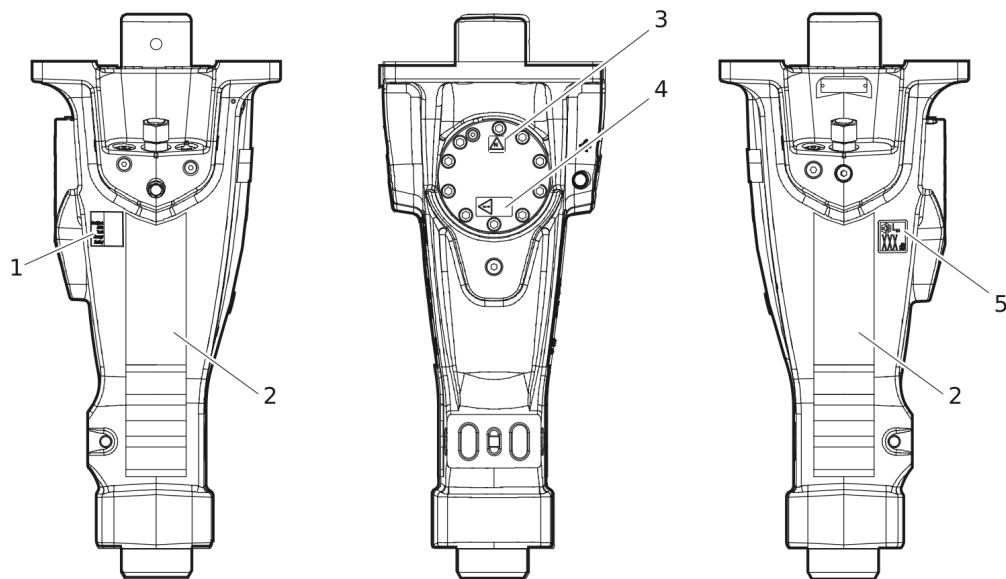
Working tools ClassicLine ..... 27

Working tools ProLine ..... 29

**Annex**

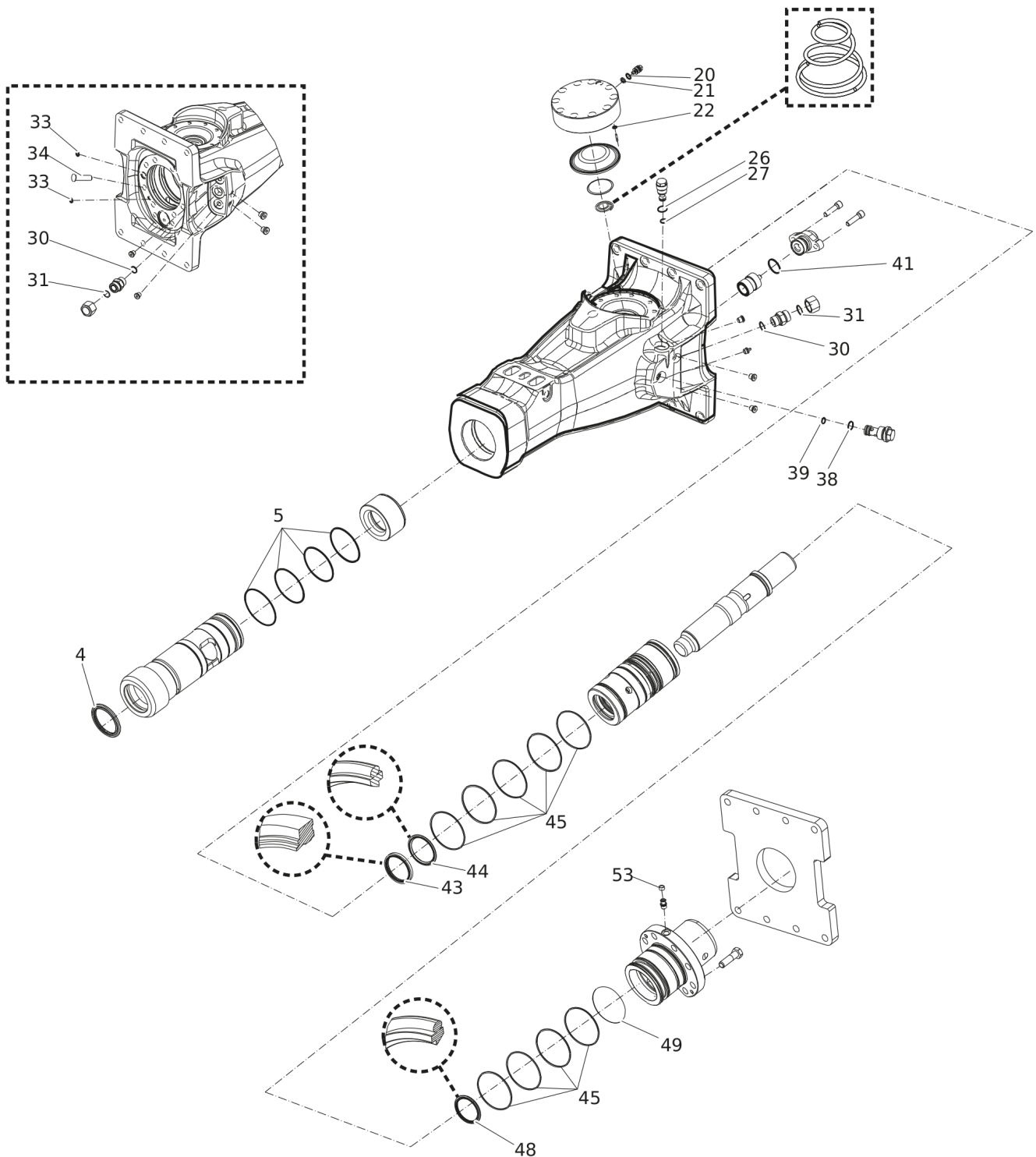
Environmental Product Compliance - REACH Declaration .....31

## Service, repair and wear part kits Label kit



Item	Part No.	Name	Qty	L
KIT	3315373590	LABEL KIT	1	
1		AEM SIGN	1	
2		PRODUCT LABEL	2	
3		SAFETY LABEL	1	
4		SAFETY LABEL	1	
5		SOUND POWER LABEL	1	

## Service, repair and wear part kits Seal kit

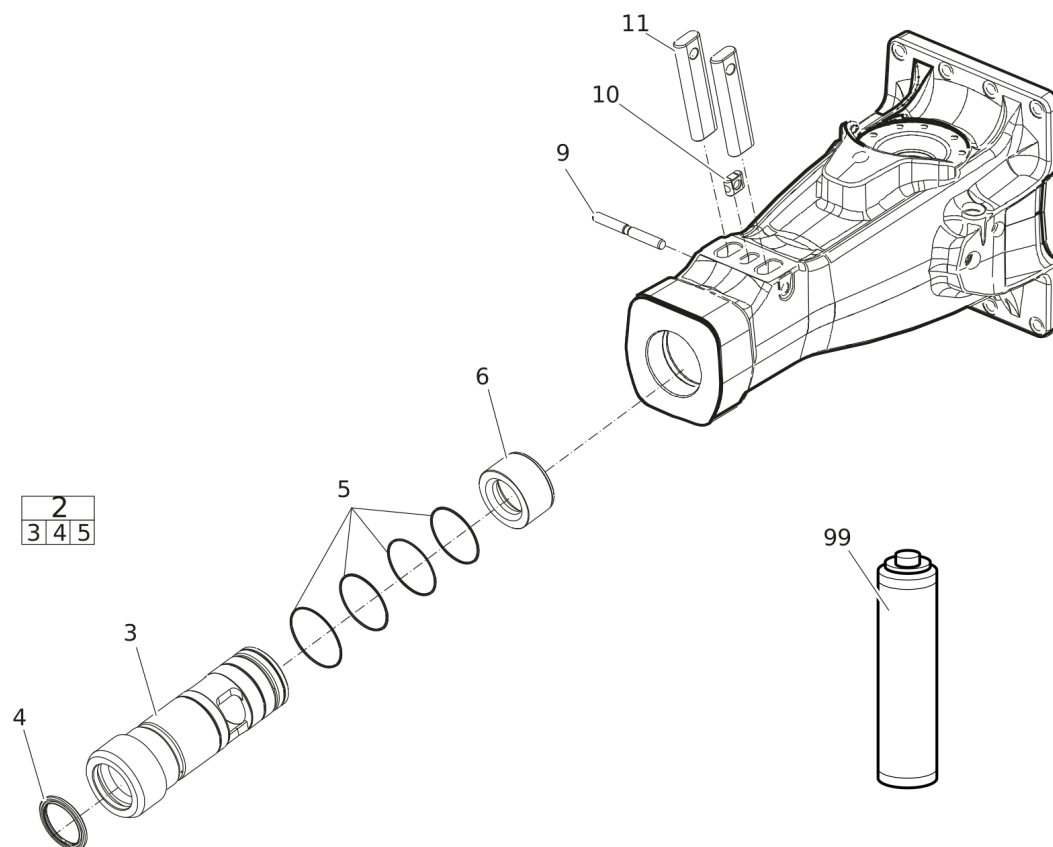


Refer to the DocMine web page for most up-to-date information. The printed information might be outdated.

Thu Aug 10 08:39:18 UTC 2023

Item	Part No.	Name	Qty	L
KIT	3315359090	SEAL KIT	1	
4	3315356200	SCRAPER RING	1	
5	0663210498	O-RING	4	
20	0663212000	O-RING	1	
21	3115329002	SEAL RING	1	
22	0663211400	O-RING	1	
26	0663903201	O-RING	1	
27	0663905401	O-RING	1	
30	0664000004	SEAL RING	1	
31	0663210217	O-RING	1	
33	0665090014	SEAL RING	2	
34	3315301100	PLUG	1	
38	0663903201	O-RING	1	
39	0663905401	O-RING	1	
41	0663990033	SEAL	1	
42	3315362900	VALVE COVER	1	
43	0665909956	WIPER	1	
44	0665070130	PISTEN ROD SEAL	1	
45	0663990036	SEAL RING	9	
48	0665070129	PISTON ROD SEAL	1	
49	0663211516	O-RING	1	
53	3315280800	VALVE RUBBER	1	

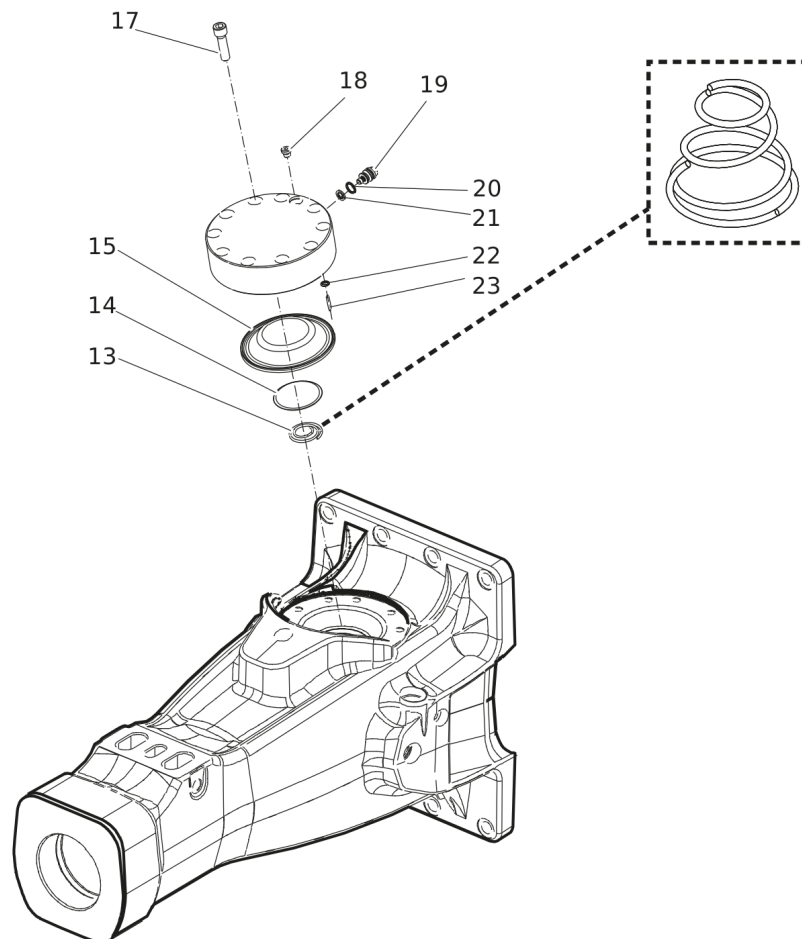
## Service, repair and wear part kits Lower hammer part kit





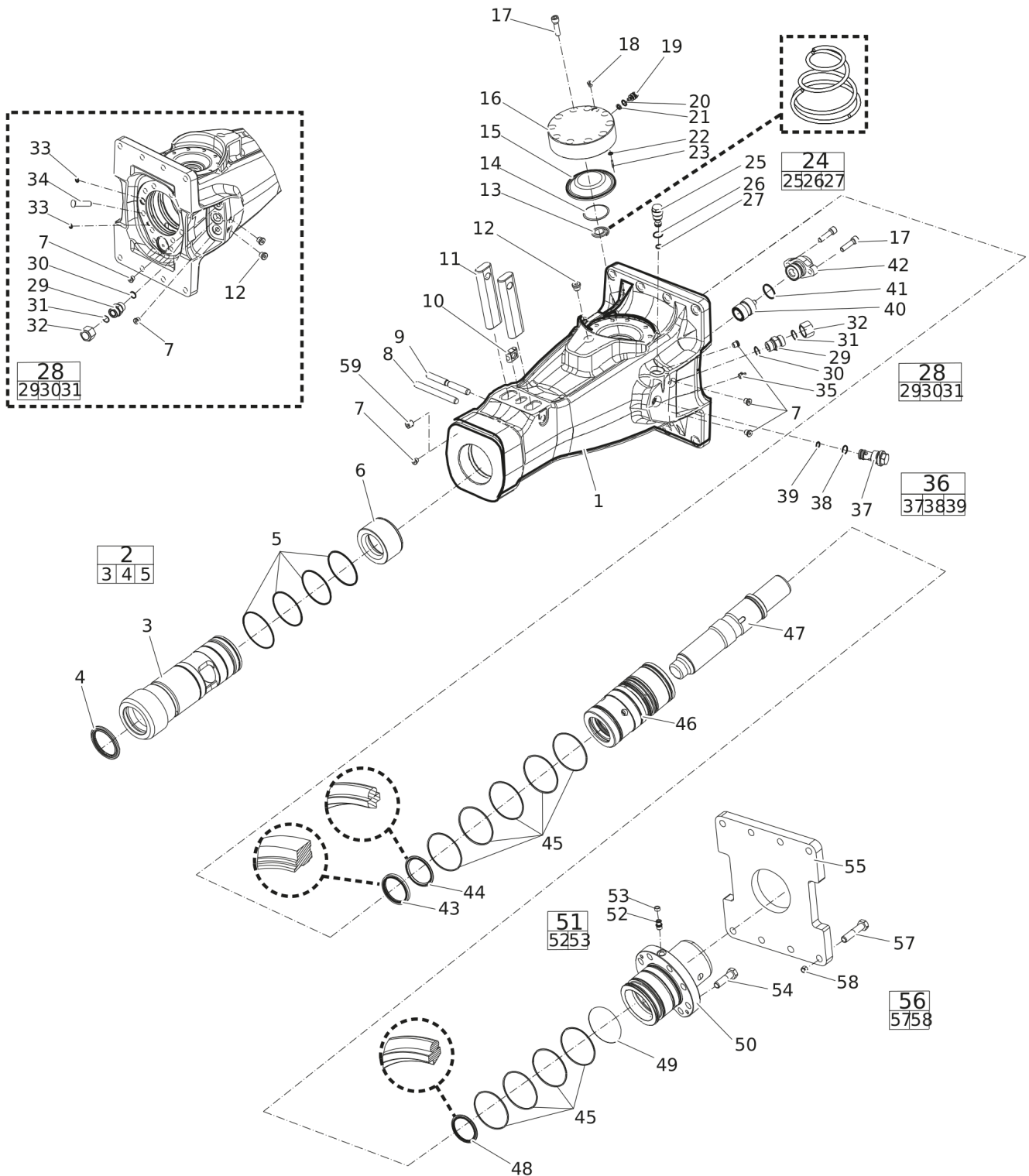
Item	Part No.	Name	Qty	L
KIT	3315352145	LOWER HAMMER PART KIT	1	
2	3315354080	BUSHING STANDARD, complete	1	
3		BUSHING, Ø 90 mm (Ø 3.54 in.)	1	
4	3315356200	SCRAPER RING	1	
5	0663210498	O-RING	4	
6	3315277800	STOP RING	1	
9	3315135000	LOCK PIN	1	
10	3315141900	LOCK BUFFER	1	
11	3315134900	RETAINER BAR	2	
99		BIO CHISEL PASTE CARTRIDGE, 1 x 400 g (0.88 lbs)	1	A

## Service, repair and wear part kits Accumulator repair kit



Item	Part No.	Name	Qty	L
KIT	3315359490	ACCUMULATOR REPAIR KIT	1	
13	3315359600	COIL SPRING	1	
14	3315359500	DIAPHRAGM SUPPORT	1	
15	3315289000	DIAPHRAGM	1	
17	0211196534	HEX SOCK. SCREW	10	
18	0686371805	PLUG	1	
19	3315366000	VALVE	1	
20	0663212000	O-RING	1	
21	3115329002	SEAL RING	1	
22	0663211400	O-RING	1	
23	0101414000	PIN	1	

## Mechanical Hydraulic breaker



Refer to the DocMine web page for most up-to-date information. The printed information might be outdated.

Thu Aug 10 08:39:19 UTC 2023

Item	Part No.	Name	Qty	L
1		BREAKER BODY	1	
2	3315354080	BUSHING STANDARD, complete	1	
3		BUSHING, Ø 90 mm (Ø 3.54 in.)	1	
4	3315356200	SCRAPER RING	1	
5	0663210498	O-RING	4	
6	3315277800	STOP RING	1	
7	0686644207	PLUG	6	
8	0108169127	SPRING PIN, option	1	
9	3315135000	LOCK PIN	1	
10	3315141900	LOCK BUFFER	1	
11	3315134900	RETAINER BAR	2	
12	0686371801	PLUG	3	
13	3315359600	COIL SPRING	1	
14	3315359500	DIAPHRAGM SUPPORT	1	
15	3315289000	DIAPHRAGM	1	
16	3315359400	ACCUMULATOR HOUSE	1	
17	0211196534	HEX SOCK. SCREW	12	
18	0686371805	PLUG	1	
19	3315366000	VALVE	1	
20	0663212000	O-RING	1	
21	3115329002	SEAL RING	1	
22	0663211400	O-RING	1	
23	0101414000	PIN	1	
24	3315335000	PRESSURE RELIEF VALVE, complete	1	A
25		PRESSURE RELIEF VALVE	1	
26	0663903201	O-RING	1	
27	0663905401	O-RING	1	
28	0580001845	NIPPLE, complete	2	
29		NIPPLE	1	
30	0664000004	SEAL RING	1	
31	0663210217	O-RING	1	
32	0570700010	CAP	2	
33	0665090014	SEAL RING	2	
34	3315301100	PLUG	1	
35	3363070299	GREASE NIPPLE	1	
36	3315369551	RESTRICTOR STANDARD, complete	1	
37		RESTRICTION	1	B

Refer to the DocMine web page for most up-to-date information. The printed information might be outdated.

Thu Aug 10 08:39:19 UTC 2023

Item	Part No.	Name	Qty	L
38	0663903201	O-RING	1	
39	0663905401	O-RING	1	
40	3315362400	CONTROL VALVE	1	
41	0663990033	SEAL	1	
42	3315362900	VALVE COVER	1	
43	0665909956	WIPER	1	
44	0665070130	PISTON ROD SEAL	1	
45	0663990036	SEAL RING	9	
46	3315359210	LINER	1	
47	3315359110	PISTON	1	
48	0665070129	PISTON ROD SEAL	1	
49	0663211516	O-RING	1	
50	3315359300	BACK HEAD	1	
51	3315244881	CHECK VALVE, complete	1	
52		CHECK VALVE	1	
53	3315280800	VALVE RUBBER	1	
54	3315431201	HEXAGON BOLT	8	
55	3315295100	BASE PLATE	1	
56	3315296490	BOLT KIT	1	
57		SCREW, M16 x 75 mm 8.8	8	
58		NUT, M16	8	
59	3315395200	WATER NOSSLE	1	

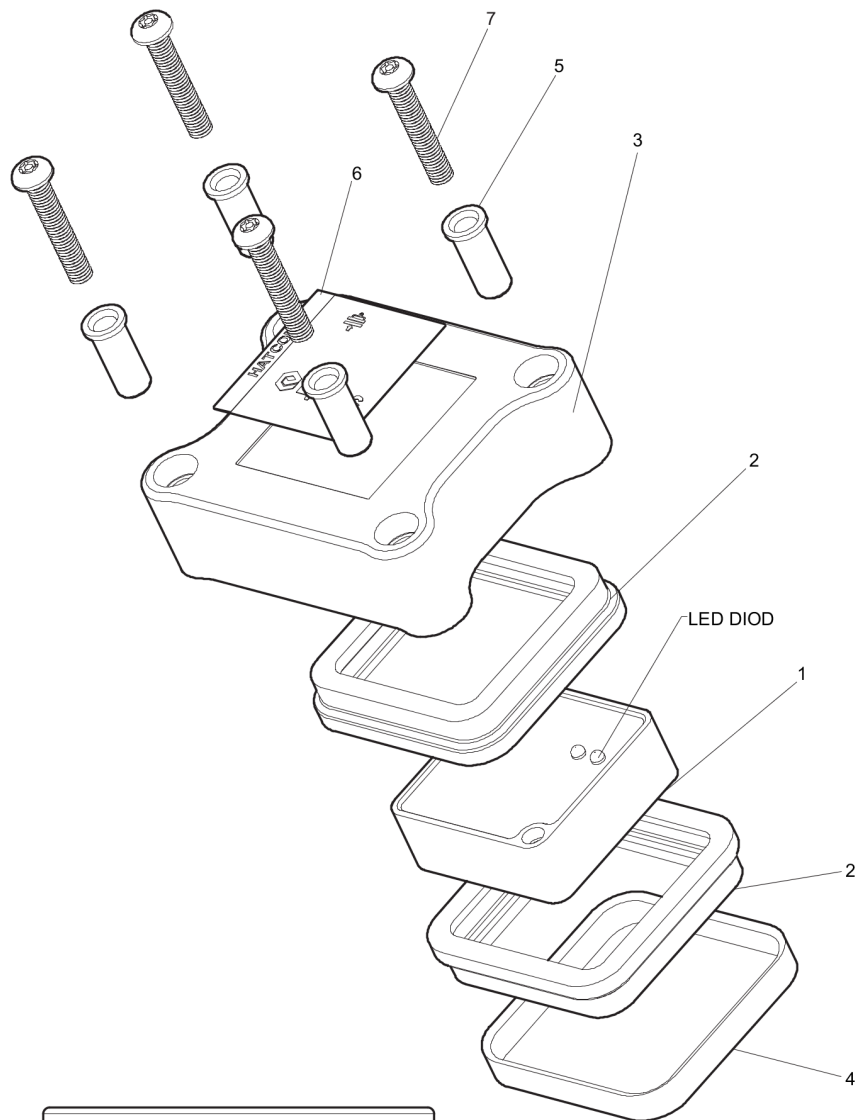
Comments for Page: Hydraulic breaker

A | CAS No. see chapter "Environmental Product Compliance - REACH Declaration"

B | RESTRICTOR, Ø 5.1 mm (Ø 0.2 in.)

This page intentionally left blank

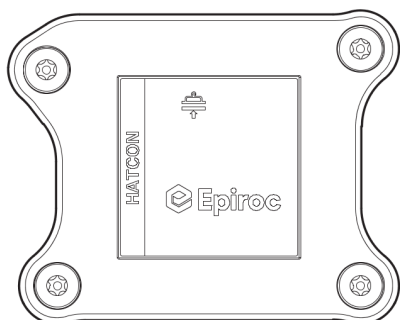
## Mechanical HATCON (Horizontal)



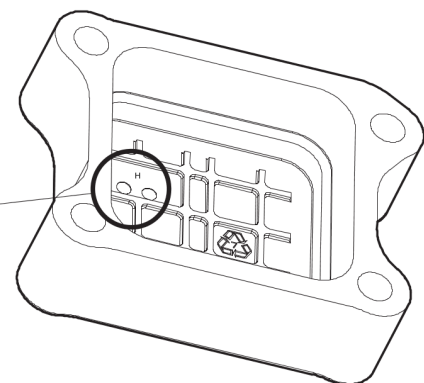
DETAIL A



Horizontal mounted.  
Match diods on POS.1 to  
match the recess marked H on POS .3



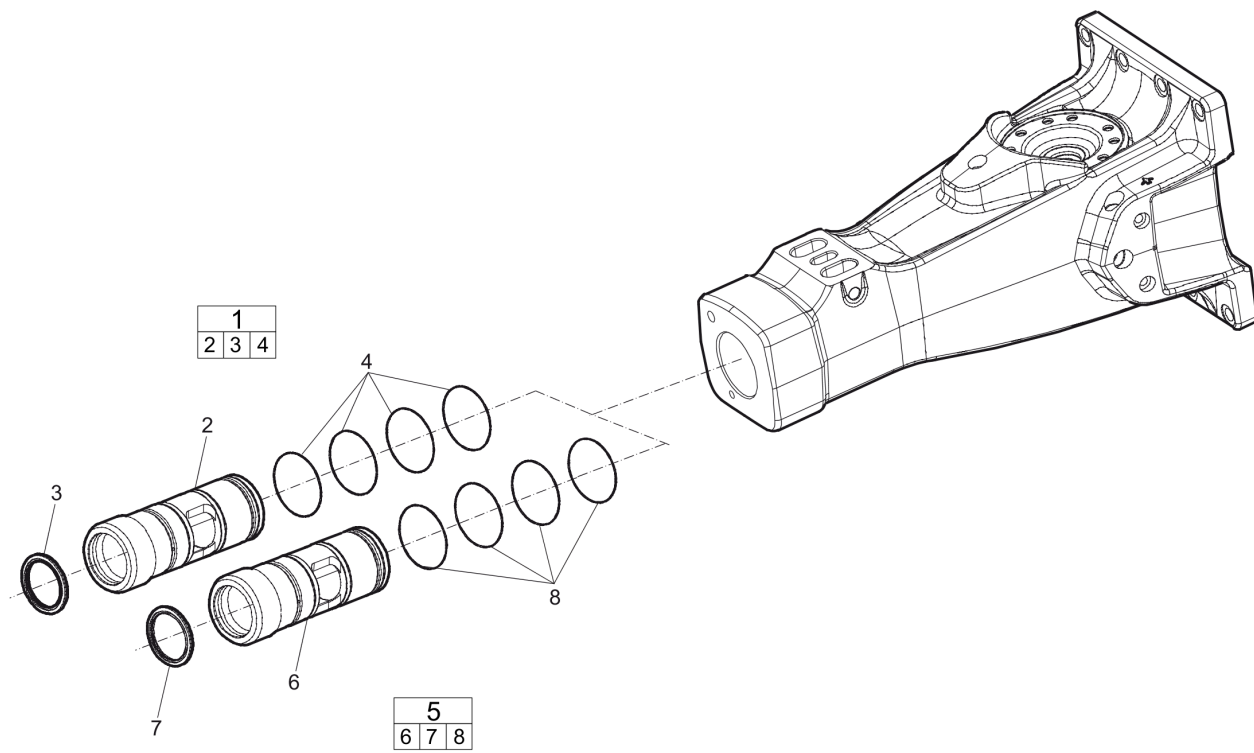
SEE DETAIL A





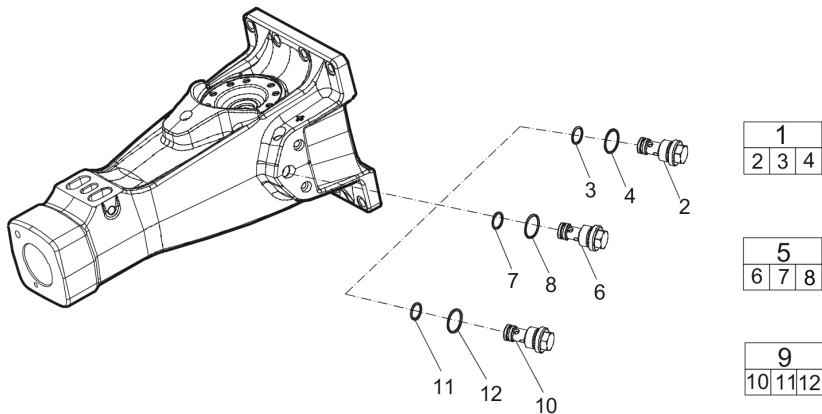
Item	Part No.	Name	Qty	L
1		TRACKING MODULE HATCON	1	
2	3315439130	DAMPER HATCON	2	
3	3315439116	HOUSING TYPE 3 HATCON	1	
4	3315439140	LOCK RING HATCON	1	
5	3315139120	SLEEVE	4	
6	3315439100	PRODUCT LABEL HATCON	1	
7	3315442600	SCREW HATCON	4	

Mechanical Bushing oversize, complete



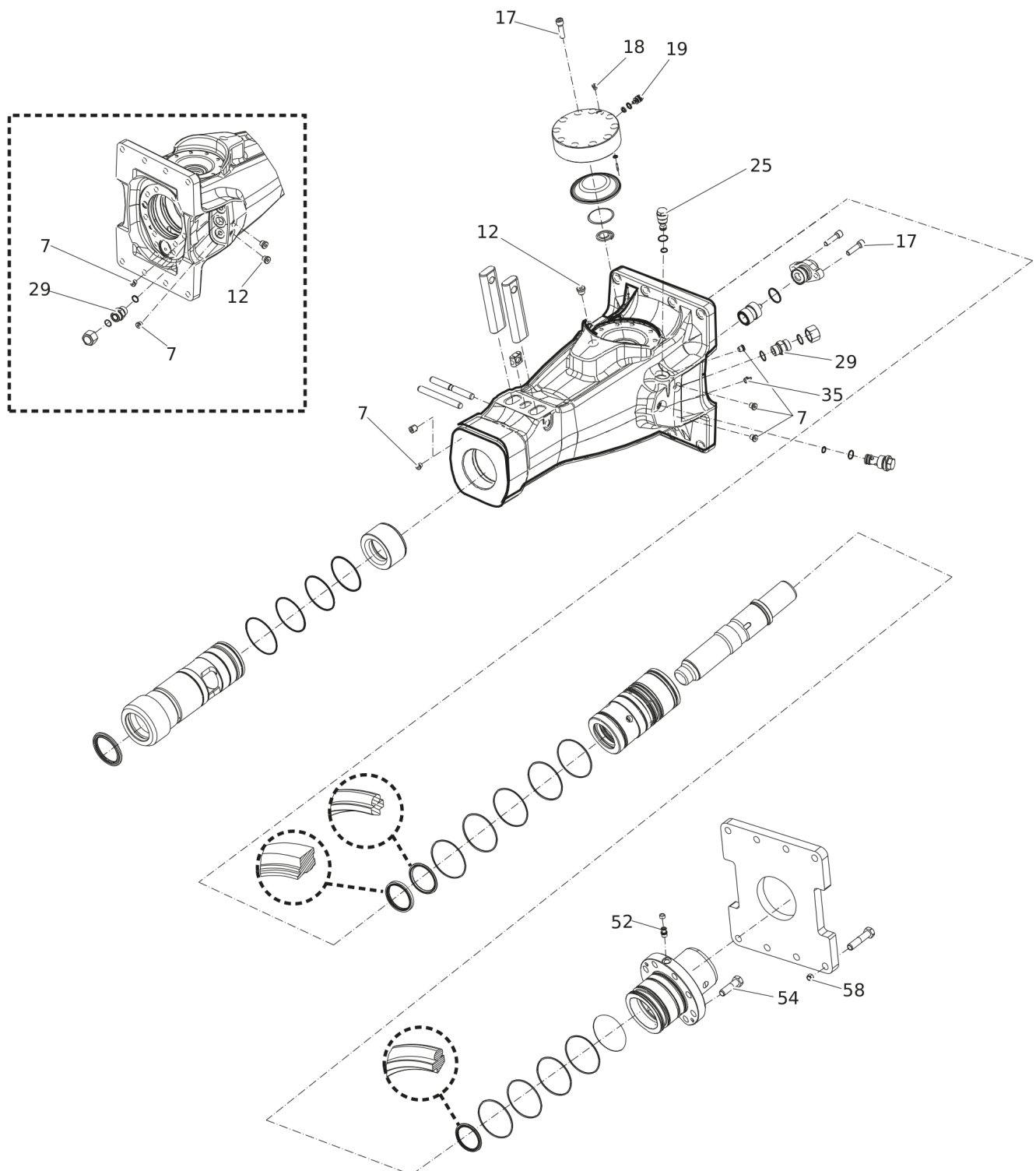
Item	Part No.	Name	Qty	L
1	3315354060	BUSHING OVERSIZE, complete	1	
2		BUSHING, Ø 91.5 mm (Ø 3.6 in.)	1	
3	3315356200	SCRAPER RING	1	
4	0663210498	O-RING	4	
5	3315354063	BUSHING OVERSIZE, complete	1	
6		BUSHING, Ø 93 mm (Ø 3.66 in.)	1	
7	3315356200	SCRAPER RING	1	
8	0663210498	O-RING	4	

Mechanical Restrictor, complete



Item	Part No.	Name	Qty	L
1	3315369540	RESTRICTOR, complete	1	
2		RESTRICTOR, Ø 4.0 mm (Ø 0.16 in.)	1	
3	0663903201	O-RING	1	
4	0663905401	O-RING	1	
5	3315369535	RESTRICTOR, complete	1	
6		RESTRICTOR, Ø 4.5 mm (Ø 0.18 in.)	1	
7	0663903201	O-RING	1	
8	0663905401	O-RING	1	
9	3315369555	RESTRICTOR, complete	1	
10		RESTRICTOR, Ø 6.7 mm (Ø 0.26 in.)	1	
11	0663903201	O-RING	1	
12	0663905401	O-RING	1	

## Mechanical Tightening torque



Item	Part No.	Name	Qty	L
7		PLUG - 30 Nm (22 ft lbf)	-	A
12		PLUG - 80 Nm (59 ft lbf)	-	A
17		HEXAGON SOCKET SCREW - 120 Nm (89 ft lbf)	-	B
18		PLUG - 20 Nm (15 ft lbf)	-	
19		VALVE - 20 Nm (15 ft lbf)	-	
25		PRESSURE RELIEF VALVE - 60 Nm (44 ft lbf)	-	
29		NIPPLE - 120 Nm (89 ft lbf)	-	
35		GREASE NIPPLE - 30 Nm (22 ft lbf)	-	
52		CHECK VALVE - 30 Nm (22 ft lbf)	-	A
54		HEXAGON HEAD Bolt - 180 Nm (133 ft lbf)	-	B
58		NUT - 170 Nm (125 ft lbf)	-	

Comments for Page: Tightening torque

LOCTITE is a registered trademark of Henkel Corporation. 243 is a trademark of Henkel Corporation. Molykote is a registered trademark of Dow Corning Corporation.

(L)OCAL REMARKS

A | LOCTITE® 243™

B | Molykote®

Technical drawing of the Hilti H 1000 S hammer drill bit, showing three views: front, side, and top. The drawing includes dimensions in millimeters and inches.

**Front View Dimensions:**

- Total length: 1061 (41.8)
- Length to handle: 732 (29)
- Length to chuck: 688 (27)
- Chuck diameter: Ø100 (3.9)
- Chuck width: 43 (1.7)
- Chuck height: 68 (2.7)
- Bit length: 165 (6.5)

**Side View Dimensions:**

- Top width: 136 (5.4)
- Top width: 124 (4.9)
- Top angle: 16°
- Side width: 83 (3.3)
- Bit diameter: Ø65 (2.6)
- Bit length: 170 (6.7)

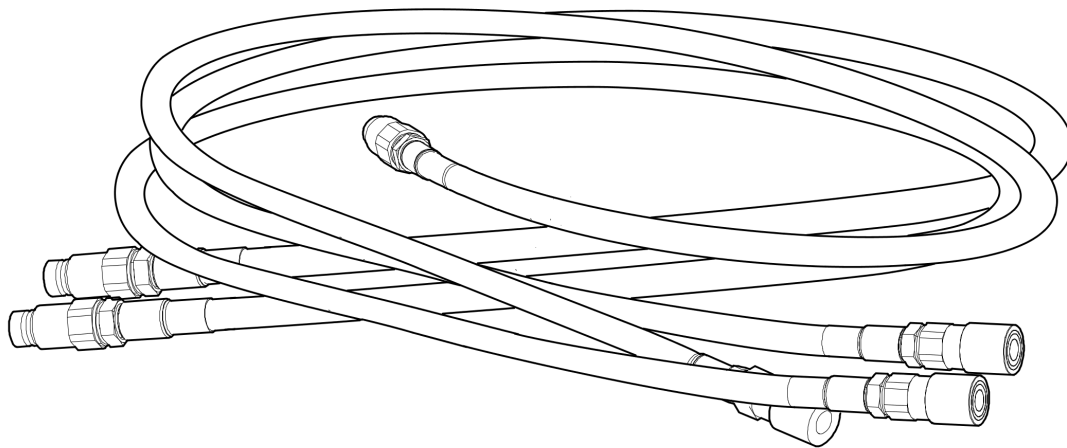
**Top View Dimensions:**

- Overall width: 314 (12.4)
- Overall height: 350 (13.8)
- Inner width: 155 (6.1)
- Inner height: 159 (6.3)
- Bit diameter: Ø18 (Ø0.7)
- Bit length: 45 (1.8)
- Bit width: 88 (3.5)
- Bit height: 90 (3.5)
- Bit width: 88 (3.5)



This page intentionally left blank

## Options/accessories Hydraulic hoses



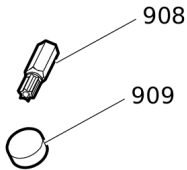
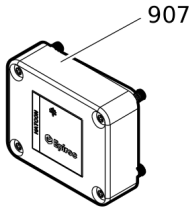
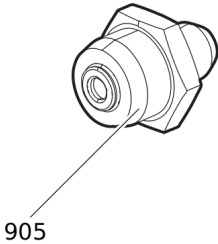
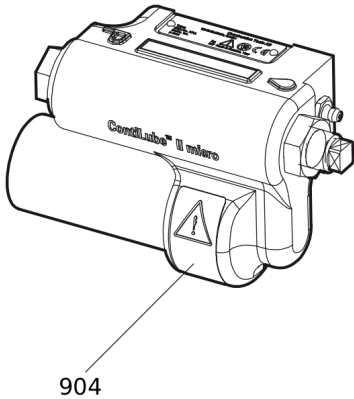
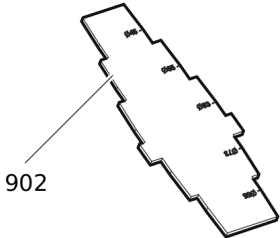
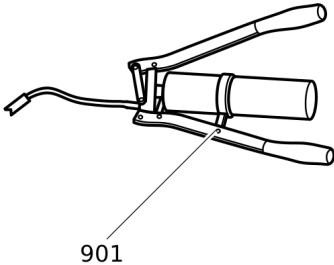
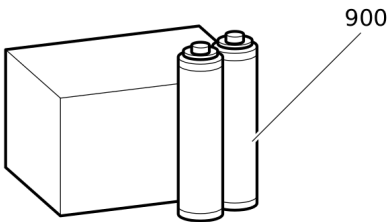
Item	Part No.	Name	Qty	L
-	3360995717	HYDRAULIC HOSE, both ends 18 L (M26 x 1.5) length 1500 mm (59 in.)	2	
-	3362235159	HYDRAULIC HOSE, both ends 18 L (M26 x 1.5) length 2000 mm (79 in.)	2	
-	3363083313	HYDRAULIC HOSE, both ends 18 L (M26 x 1.5) length 2400 mm (95 in.)	2	
-	3363098019	ADDITIONAL FITTING KIT	1	A

Comments for Page: Hydraulic hoses

(L)OCAL REMARKS

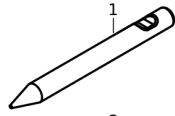
A | Needed to fit two hoses to the hydraulic breaker

Options/accessories    Optional equipment

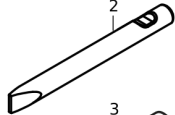


Item	Part No.	Name	Qty	L
900	3363122354	BIO CHISEL PASTE, 20 x 150 g (0.33 lbs)	1	
900	3363122355	BIO CHISEL PASTE CARTRIDGE FOR GREASE GUN, 12 x 400 g (0.88 lbs)	1	
-	3363122357	BIO CHISEL PASTE CONTAINER 15 kg (33 lbs)	1	
-	3363122358	BIO CHISEL PASTE CONTAINER 45 kg (99 lbs)	1	
901	0909107100	LUBRICAT.GUN	1	
902	3315353100	BUSHING WEAR CONTROLLER	1	
904	3315383190	CONTILUBE II MICRO	1	
905	3363094459	NIPPLE, for charging the accumulator	1	
-	3360920415	FILLING DEVICE, for accumulator	1	
-	3361329803	FILLING HOSE, for charging the accumulator	1	
907	3315442502	HATCON KIT 2 2G/3G	1	
907	3315442521	HATCON KIT 2 (LTE, 2G/4G)	1	
908	3315439105	SECURITY BIT HATCON	1	
909	3315439106	MAGNET HATCON	1	

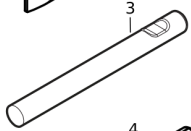
## Options/accessories Working tools ClassicLine



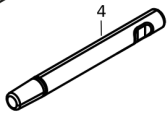
L=330 mm, LT=630 mm, Wt=13 kg  
L=12.99 inch, LT=24.8 inch, Wt= 28.66 lb



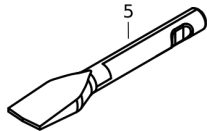
W= 65 mm, L=330 mm, LT=630 mm, Wt=14 kg  
W=2.56 inch, L= 12.99 inch, LT=24.8 inch, Wt=30.86 lb



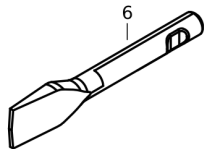
L=330 mm, LT=630 mm, Wt=15 kg  
L=12.99 inch, LT=24.8 inch, Wt=33.07 lb



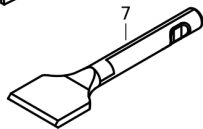
LT=630 mm, Wt=21 kg  
LT=24.8 inch, Wt=46.3 lb



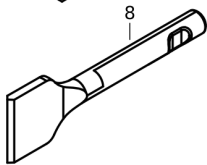
W=130 mm, L=350 mm, LT=650 mm, Wt=16 kg  
W=5.12 inch, L=13.78 inch, LT=25.6 inch, Wt=35.27 lb



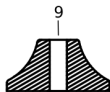
W=130 mm, L=350 mm, LT=650 mm, Wt=16kg  
W=5.12 inch, L=13.78 inch, LT=25.6 inch, Wt=35.27 lb



W=140 mm, L=350 mm, LT=650 mm, Wt=16 kg  
W=5.51 inch, L=13.78 inch, LT=25.6 inch, Wt=35.27 lb



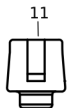
W=140 mm, L=350 mm, LT=650 mm, Wt=16 kg  
W=5.51 inch, L=11.02 inch, LT=25.6 inch, Wt=35.27 lb



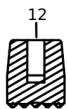
W= Ø300 mm, Wt=33 kg  
W= Ø11.81 inch, Wt=1.3 lb



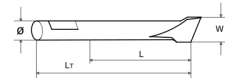
W=Ø150 mm, Wt=21 kg  
W= Ø5.9 inch, Wt=0.83 lb



W=Ø100 mm, Wt=9 kg  
W= Ø3.9 inch, Wt=0.35 lb



W=Ø130 , Wt=9.8 kg  
W= Ø5.1 inch, Wt=0.38 lb

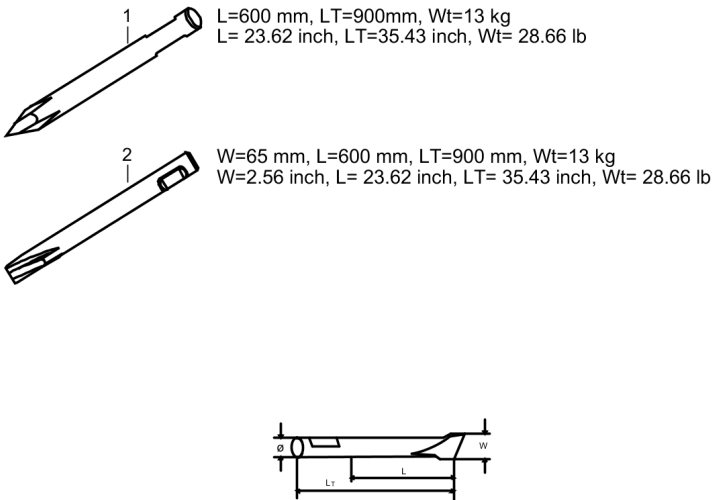


Refer to the DocMine web page for most up-to-date information. The printed information might be outdated.

Thu Aug 10 08:39:26 UTC 2023

Item	Part No.	Name	Qty	L
1	3083316206	MOIL POINT	1	
2	3083316105	CHISEL (cross)	1	
3	3083341105	BLUNT TOOL	1	
4	3315370205	SHAFT	1	
5	3083316300	WIDE CHISEL (cross)	1	
6	3083316700	WIDE CHISEL (parallel)	1	
7	3083340946	ASPHALT CUTTER (cross)	1	
8	3083340947	ASPHALT CUTTER (parallel)	1	
9	3315370900	TAMPING PAD (square)	1	
10	3315371700	POST DRIVER PAD (round)	1	
11	3315372300	PILE DRIVER PAD (round)	1	
12	3315373000	BUSHING PAD (round)	1	

Options/accessories Working tools ProLine





Item	Part No.	Name	Qty	L
1	3363120263	MOIL POINT (X-Profile)	1	
2	3363120264	CHISEL (X-profile)	1	

Annex Environmental Product Compliance - REACH Declaration

NO EXPLODED VIEW  
AVAILABLE  
FOR THIS BOM

Item	Part No.	Name	Qty	L
24	-	PRESSURE RELIEF VALVE, complete, Part No. 3315335000 - CAS No. 7439-92-1	-	

Comments for Page: Environmental Product Compliance - REACH Declaration

EU REACH Candidate List substances present in product listed above.

Any unauthorized use or copying of the contents or any part thereof is prohibited.  
This applies in particular to trademarks, model denominations, part numbers, and drawings.