

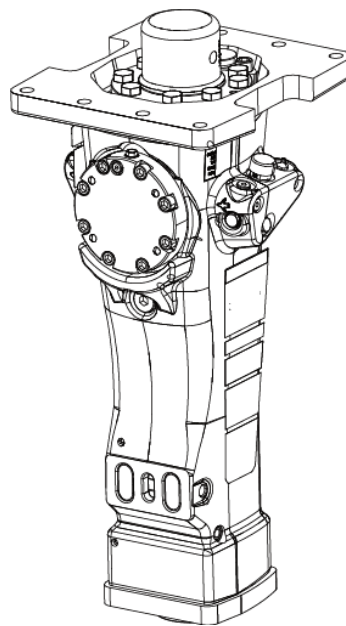
# SB 552 Tunnel

---

## Spare parts list

### Hydraulic breakers

SB 552 Tunnel s/n BES129967 –



# General information

This spare parts list applies to the following:

Part number	Description
8460030083	SB 552 Tunnel

Use only authorized parts. Any damage or malfunction caused by the use of unauthorized parts is not covered by Warranty or Product Liability. Any unauthorized use or copying of the contents or any part thereof is prohibited. This applies in particular to trademarks, model denominations, part numbers, and drawings.

## Instructions for use

This spare parts list contains no safety regulations and is merely intended to assist in the ordering of spare parts.

For information about operating, servicing, or repairing, the relevant Safety and operating instructions must be consulted at all costs.

Please observe the safety instructions listed in the relevant Safety and operating instructions!

**Service, repair, wear part kits**

Label kit ..... 1

Seal kit ..... 3

Lower hammer part kit .....5

Accumulator repair kit ..... 7

**Mechanical**

Hydraulic breaker ..... 9

Optional parts - Bushing oversize, complete ..... 12

Optional parts - Restrictor completes ..... 15

Tightening torque ..... 17

Dimensions (mm) ..... 19

Assembly instruction ..... 20

**Options/accessories**

Hydraulic hoses ..... 22

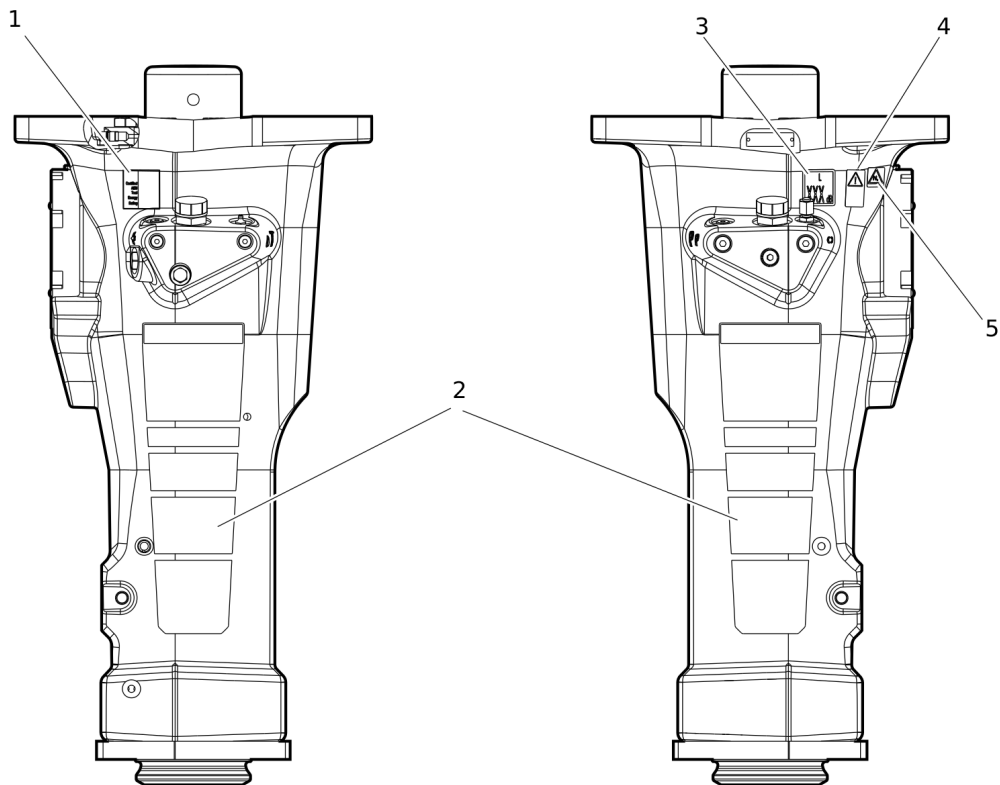
Optional equipment ..... 25

Working Tools ClassicLine ..... 27

**Annex**

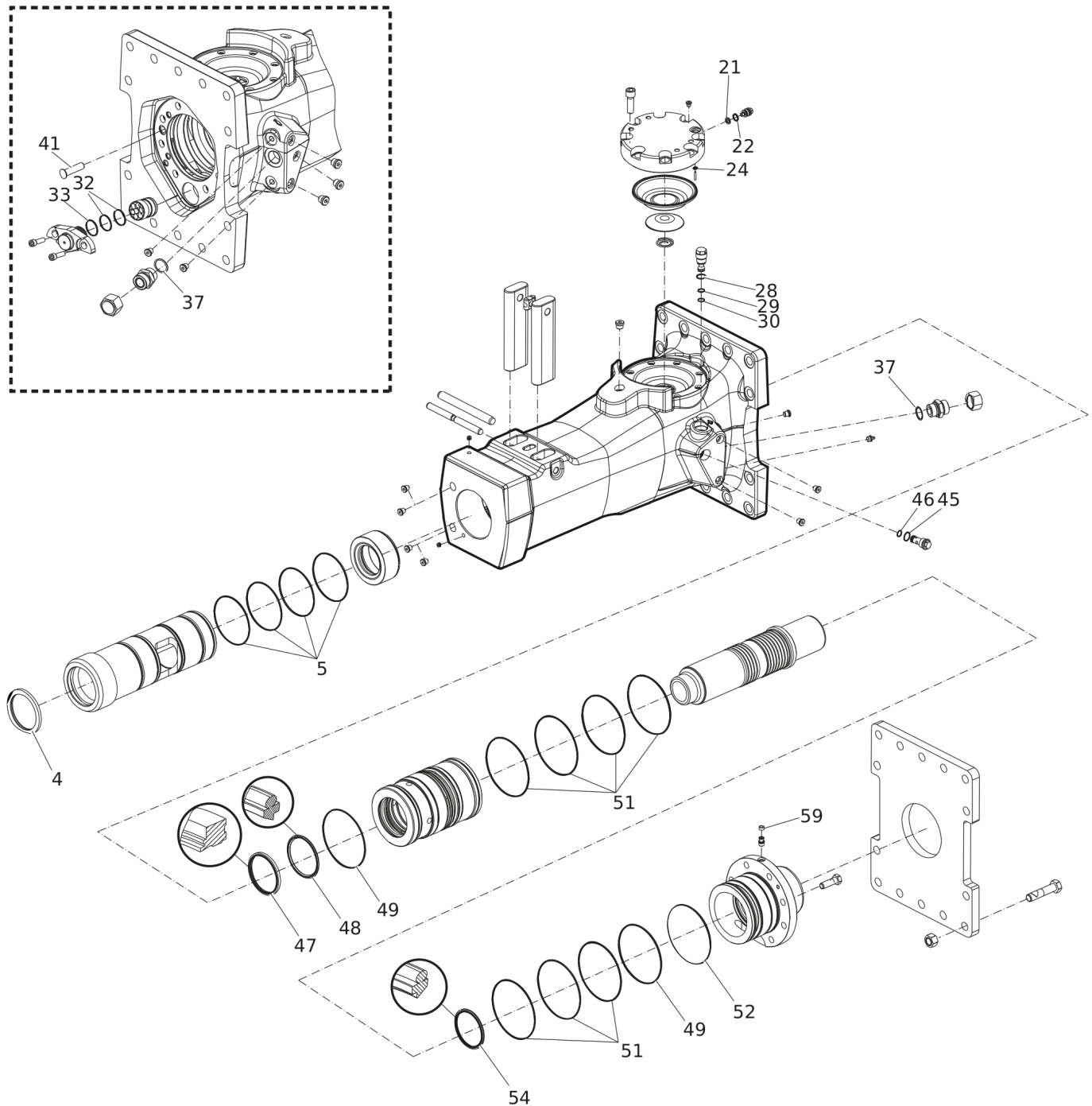
Environmental Product Compliance - REACH Declaration .....29

Service, repair, wear part kits Label kit



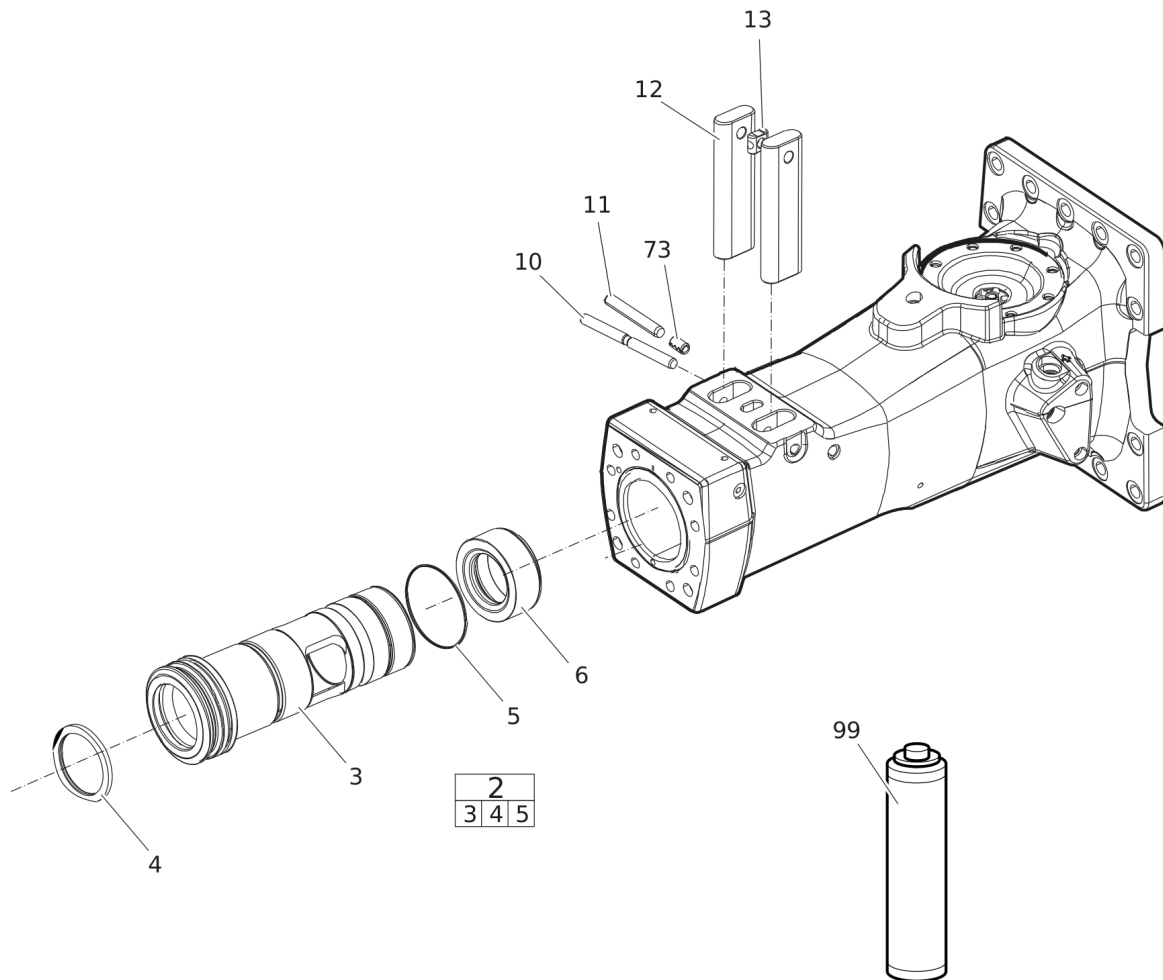
Item	Part No.	Name	Qty	L
KIT	3315321590	LABEL KIT	1	
1		AEM SIGN	1	
2		PRODUCT LABEL	2	
3		SOUND POWER LABEL	1	
4		SAFETY LABEL	1	
5		SAFETY LABEL	1	

## Service, repair, wear part kits Seal kit



Item	Part No.	Name	Qty	L
KIT	3315303690	SEAL KIT	1	
4	3315303000	SCRAPER RING	1	
5	0663210823	O-RING	4	
21	3115329002	SEAL RING	1	
22	0663212000	O-RING	1	
24	0663211400	O-RING	1	
28	9125621100	O-RING	1	
29	0663210421	O-RING	1	
30	0661200401	BACK-UP RING	1	
32	0663990026	SEAL RING	2	
33	0663211491	O-RING	1	
37	0664000005	SEAL RING	1	
41	3315336700	PLUG	1	
45	0663210421	O-RING	1	
46	9125621100	O-RING	1	
47	0665909965	WIPER	1	
48	0665070134	PISTON ROD SEAL	1	
49	0663990027	SEAL RING	2	
51	0663211303	O-RING	7	
52	0663211506	O-RING	1	
54	0665070133	PISTON ROD SEAL	1	
59	3315280800	VALVE RUBBER	1	

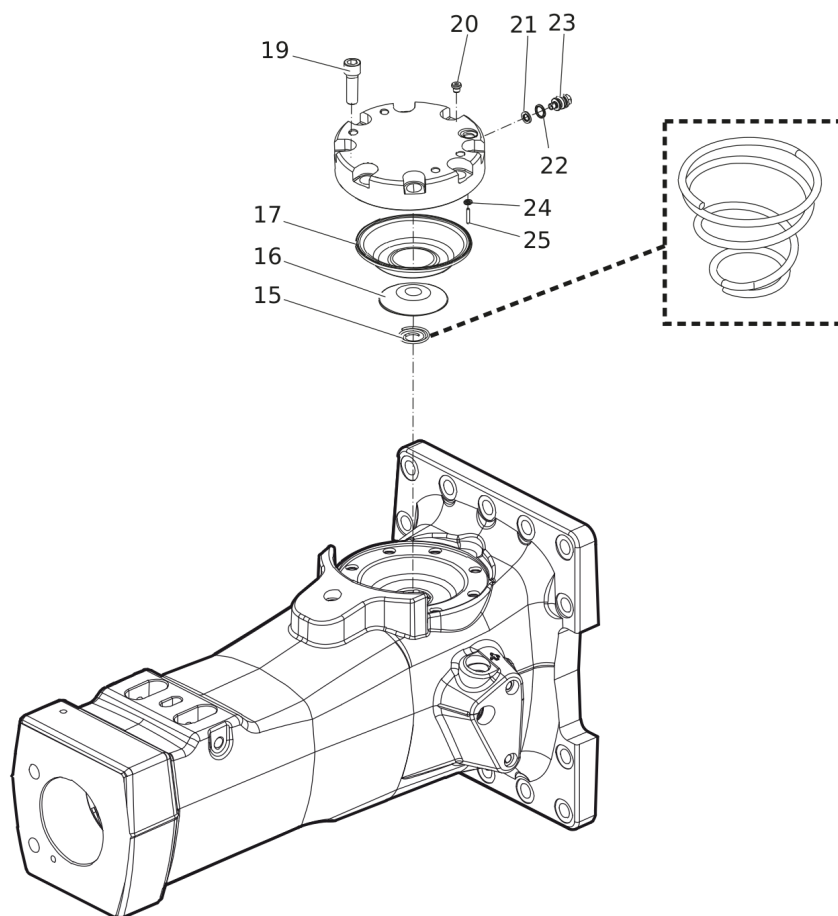
## Service, repair, wear part kits Lower hammer part kit





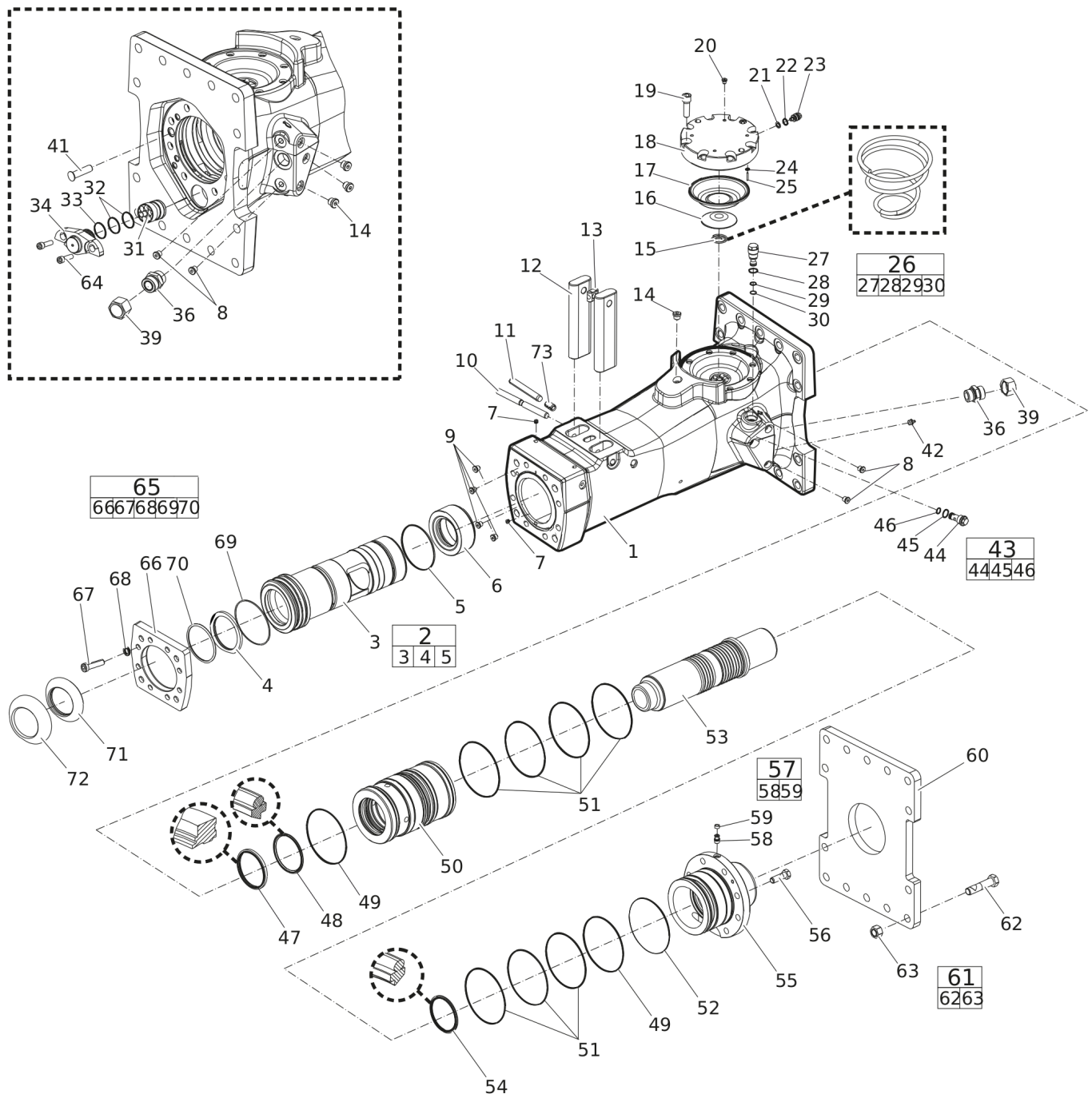
Item	Part No.	Name	Qty	L
KIT	3382070199	LOWER HAMMER PART KIT	1	
2	3382070197	BUSHING, complete	1	
3		BUSHING	1	
4	3315303000	SCRAPER RING	1	
5	0663210823	O-RING	4	
6	3315302800	STOP RING	1	
10	3315319110	LOCK PIN	1	
11	3315434900	BUSHING PIN	1	
12	3315442750	RETAINER BAR	2	
13	3315141900	LOCK BUFFER	1	
73	0108110322	SPRING PIN	1	
99		BIO CHISEL PASTE CARTRIDGE, 1 x 400 g (0.88 lbs)	1	

## Service, repair, wear part kits Accumulator repair kit



Item	Part No.	Name	Qty	L
KIT	3315303190	ACCUMULATOR REPAIR KIT	1	
15	3315303500	COIL SPRING	1	
16	3315303201	DIAPHRAGM SUPPORT	1	
17	3315416300	DIAPHRAGM	1	
19	0211196544	HEXAGON SOCKET SCREW	8	
20	0686371805	PLUG	1	
21	3115329002	SEAL RING	1	
22	0663212000	O-RING	1	
23	3315366000	VALVE	1	
24	0663211400	O-RING	1	
25	0101414000	PIN	1	

## Mechanical Hydraulic breaker



Refer to the DocMine web page for most up-to-date information. The printed information might be outdated.

Tue Oct 31 11:29:07 UTC 2023

Item	Part No.	Name	Qty	L
1		BREAKER BODY	1	
2	3382070197	BUSHING, complete	1	
3		BUSHING	1	
4	3315303000	SCRAPER RING	1	
5	0663210823	O-RING	4	
6	3315302800	STOP RING	1	
7	0686100009	PLUG	2	
8	0686644207	PLUG	4	
9	3315395200	WATER NOSSLE	4	
10	3315319110	LOCK PIN	1	
11	3315434900	BUSHING PIN	1	
12	3315442750	RETAINER BAR	2	
13	3315141900	LOCK BUFFER	1	
14	0686371801	PLUG	4	
15	3315303500	COIL SPRING	1	
16	3315303201	DIAPHRAGM SUPPORT	1	
17	3315416300	DIAPHRAGM	1	
18	3315303100	DIAPHRAGM COVER	1	
19	0211196544	HEXAGON SOCKET SCREW	8	
20	0686371805	PLUG	1	
21	3115329002	SEAL RING	1	
22	0663212000	O-RING	1	
23	3315366000	VALVE	1	
24	0663211400	O-RING	1	
25	0101414000	PIN	1	
26	3315365800	PRESSURE RELIEF VALVE, complete	1	A
27	-	PRESSURE RELIEF VALVE	1	
28	0663212141	O-RING	1	
29	0663210421	O-RING	1	
30	0661200401	BACK-UP RING	1	
31	3315312100	CONTROL VALVE	1	
32	0663990026	SEAL RING	2	
33	0663211491	O-RING	1	
34	3315362820	VALVE COVER	1	
36	3176634800	NIPPLE	1	
39	3176542900	CAP	2	
41	3315336700	PLUG	1	

Refer to the DocMine web page for most up-to-date information. The printed information might be outdated.

Tue Oct 31 11:29:07 UTC 2023

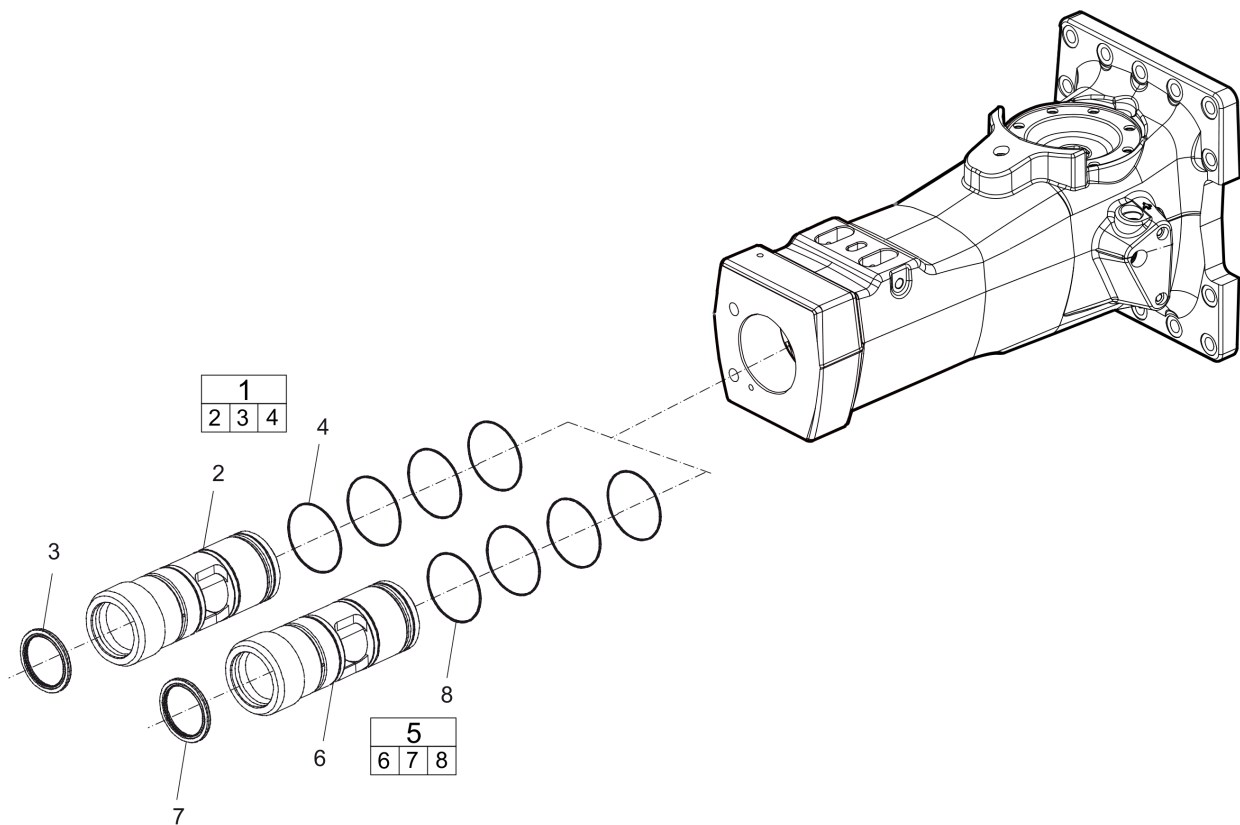
Item	Part No.	Name	Qty	L
42	3360433774	GREASE NIPPLE	1	
43	3315369655	RESTRICTOR, complete	1	
44		RESTRICTOR, 7.7 mm (0.30 in.)	1	
45	0663210421	O-RING	1	
46	0663212141	O-RING	1	
47	0665909965	WIPER	1	
48	0665070134	PISTON ROD SEAL	1	
49	0663990027	SEAL RING	2	
50	3315302520	LINER	1	
51	0663211303	O-RING	7	
52	0663211506	O-RING	1	
53	3315442000	PISTON	1	
54	0665070133	PISTON ROD SEAL	1	
55	3315303410	BACK HEAD	1	
56	0147155503	SCREW, HEX HEAD	8	
57	3315244881	CHECK VALVE, complete	1	
58		CHECK VALVE	1	
59	3315280800	VALVE RUBBER	1	
60	3315307700	BASE PLATE	1	
61	3315323990	BOLT KIT	1	
62	-	SCREW	14	
63		NUT	14	
64	0211110495	HEXAGON SOCKET SCREW	2	
65	3382070198	WEAR PLATE, complete	1	
66		WEAR PLATE	1	
67	3315431101	HEXAGON SOCKET SCREW	8	
68	0333520027	LOCK WASHER	8	
69	0663210658	O-RING	1	
70	0663212007	O-RING	1	
71	3315440404	DUST COVER	1	
72	3315440403	FRONT SHIELD	1	
73	0108110322	SPRING PIN	1	

Comments for Page: Hydraulic breaker

A | CAS No. see chapter "Environmental Product Compliance - REACH Declaration"

This page intentionally left blank

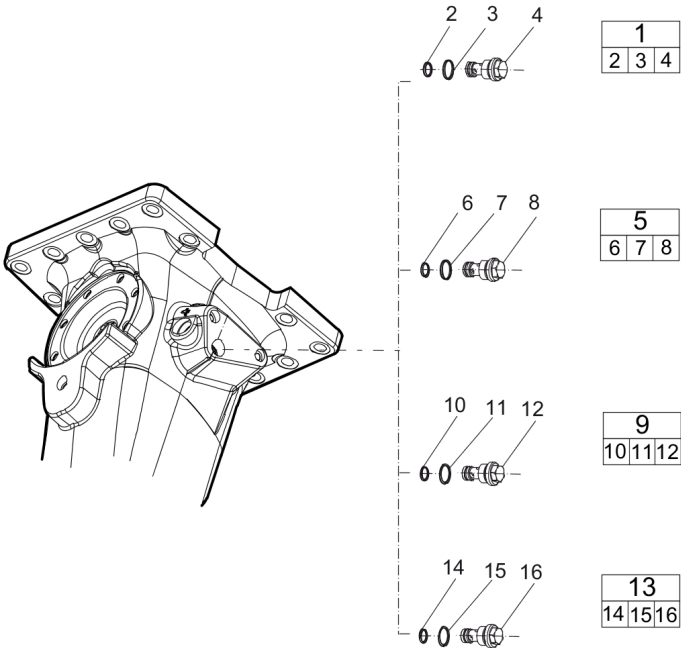
## Mechanical Optional parts - Bushing oversize, complete





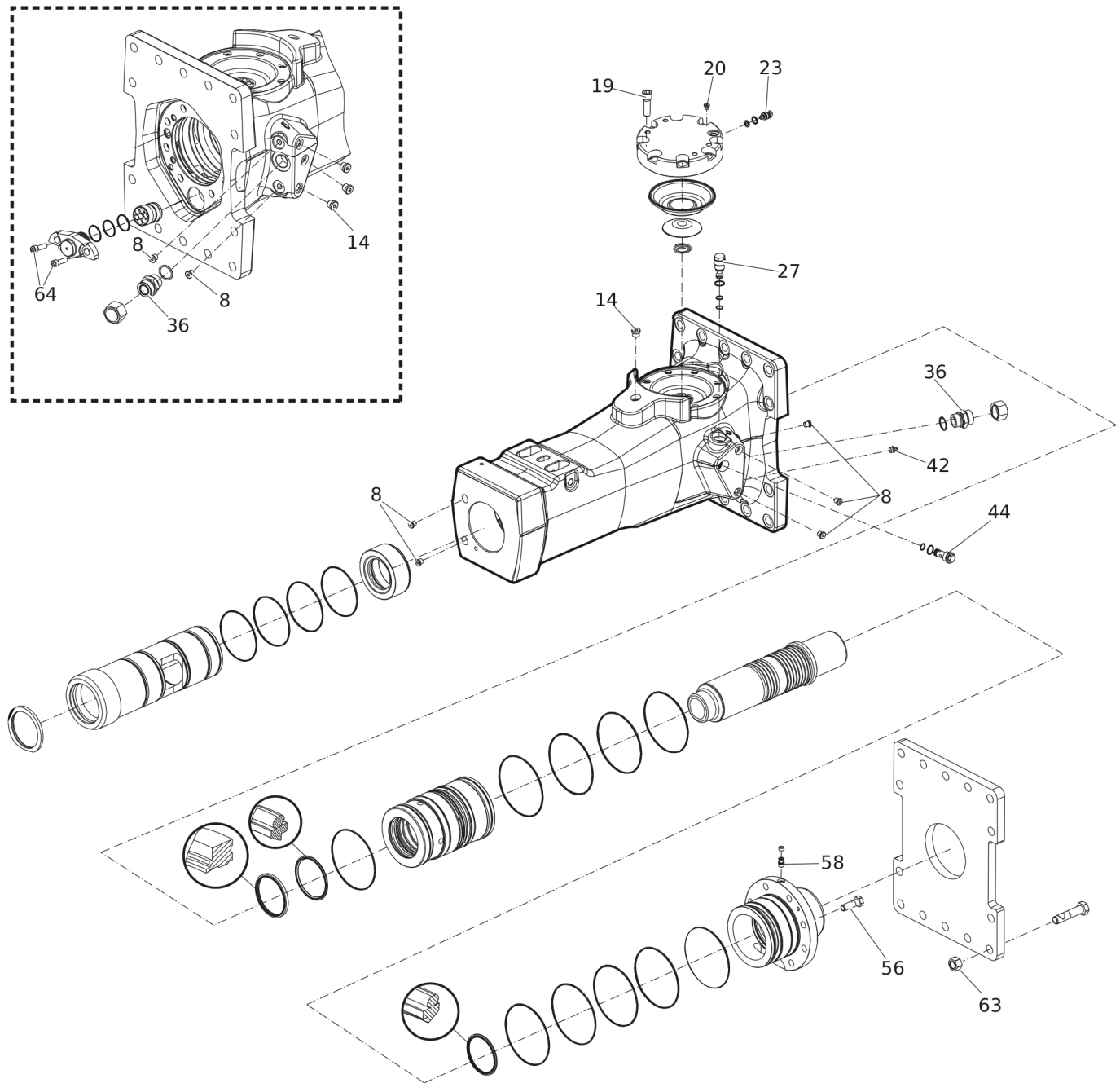
Item	Part No.	Name	Qty	L
1	3382070200	BUSHING, complete	1	
2		BUSHING, Ø 135.5 mm (Ø 5.33 in.)	1	
3	3315303000	SCRAPER RING	1	
4	0663210823	O-RING	4	
5	3382070201	BUSHING, complete	1	
6		BUSHING, Ø 137 mm (Ø 5.39 in.)	1	
7	3315303000	SCRAPER RING	1	
8	0663210823	O-RING	4	

Mechanical Optional parts - Restrictor completes



Item	Part No.	Name	Qty	L
1	3315369635	RESTRICTOR, complete	1	
2	0663210421	O-RING	1	
3	0663212141	O-RING	1	
4		RESTRICTOR	1	
5	3315369645	RESTRICTOR, complete	1	
6	0663210421	O-RING	1	
7	0663212141	O-RING	1	
8		RESTRICTOR	1	
9	3315369655	RESTRICTOR, complete	1	
10	9125621100	O-RING	1	
11	0663210421	O-RING	1	
12		RESTRICTOR, 7.7 mm (0.30 in.)	1	
13	3315369691	RESTRICTOR, complete	1	
14	0663210421	O-RING	1	
15	9125621100	O-RING	1	
16		RESTRICTOR, 9.1 mm (0.36 in.)	1	

## Mechanical Tightening torque



Refer to the DocMine web page for most up-to-date information. The printed information might be outdated.

Tue Oct 31 11:29:09 UTC 2023

Item	Part No.	Name	Qty	L
8		PLUG - 30 Nm (22 ft lbf)	-	A
14		PLUG - 80 Nm (59 ft lbf)	-	A
19		HEXAGON SOCKET SCREW - 300 Nm (221 ft lbf)	-	B
20		PLUG - 20 Nm (15 ft lbf)	-	
23		VALVE - 27 Nm (20 ft lbf)	-	
27		PRESSURE RELIEF VALVE - 80 Nm (59 ft lbf)	-	
36		PIPE COUPLING - 315 Nm (232 ft lbf)	-	
42		GREASE NIPPLE - 30 Nm (22 ft lbf)	-	
44		RESTRICTOR - 80 Nm (59 ft lbf)	-	
56		HEXAGON HEAD SCREW - 315 Nm (232 ft lbf)	-	B
58		CHECK VALVE - 30 Nm (22 ft lbf)	-	A
63		NUT - 400 Nm (295 ft lbf)	-	B
64		HEXAGON SOCKET SCREW - 615 Nm (454 ft lbf)	-	B

Comments for Page: Tightening torque

LOCTITE is a registered trademark of Henkel Corporation. 243 is a trademark of Henkel Corporation.

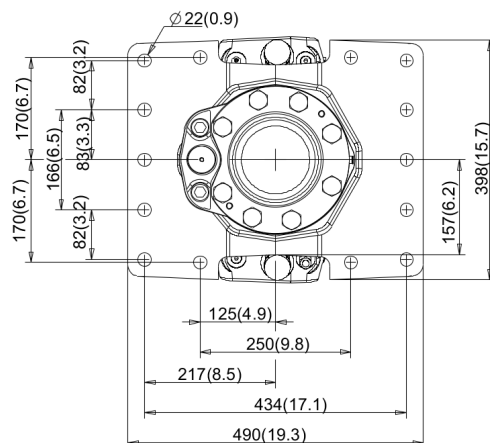
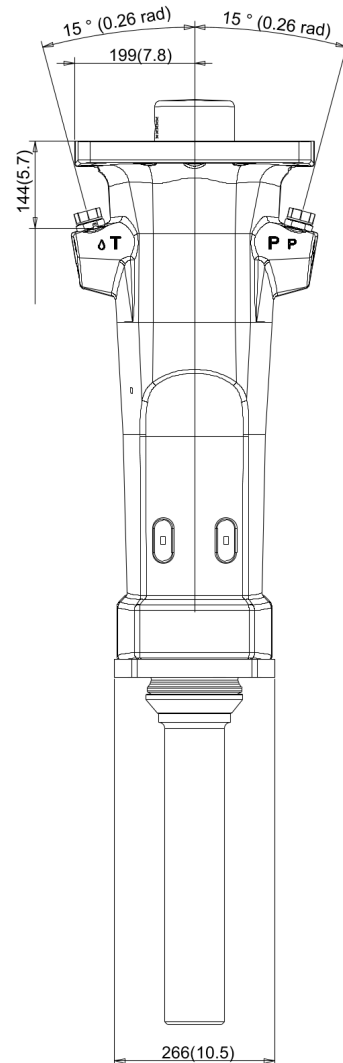
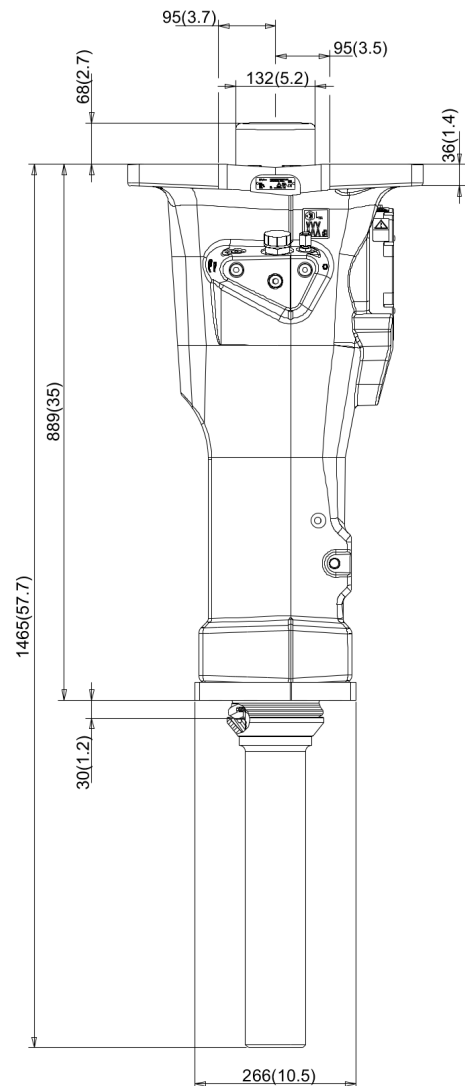
Molykote is a registered trademark of Dow Corning Corporation.

#### (L)OCAL REMARKS

A | LOCTITE® 243™

B | Molykote®

## Mechanical Dimensions (mm)

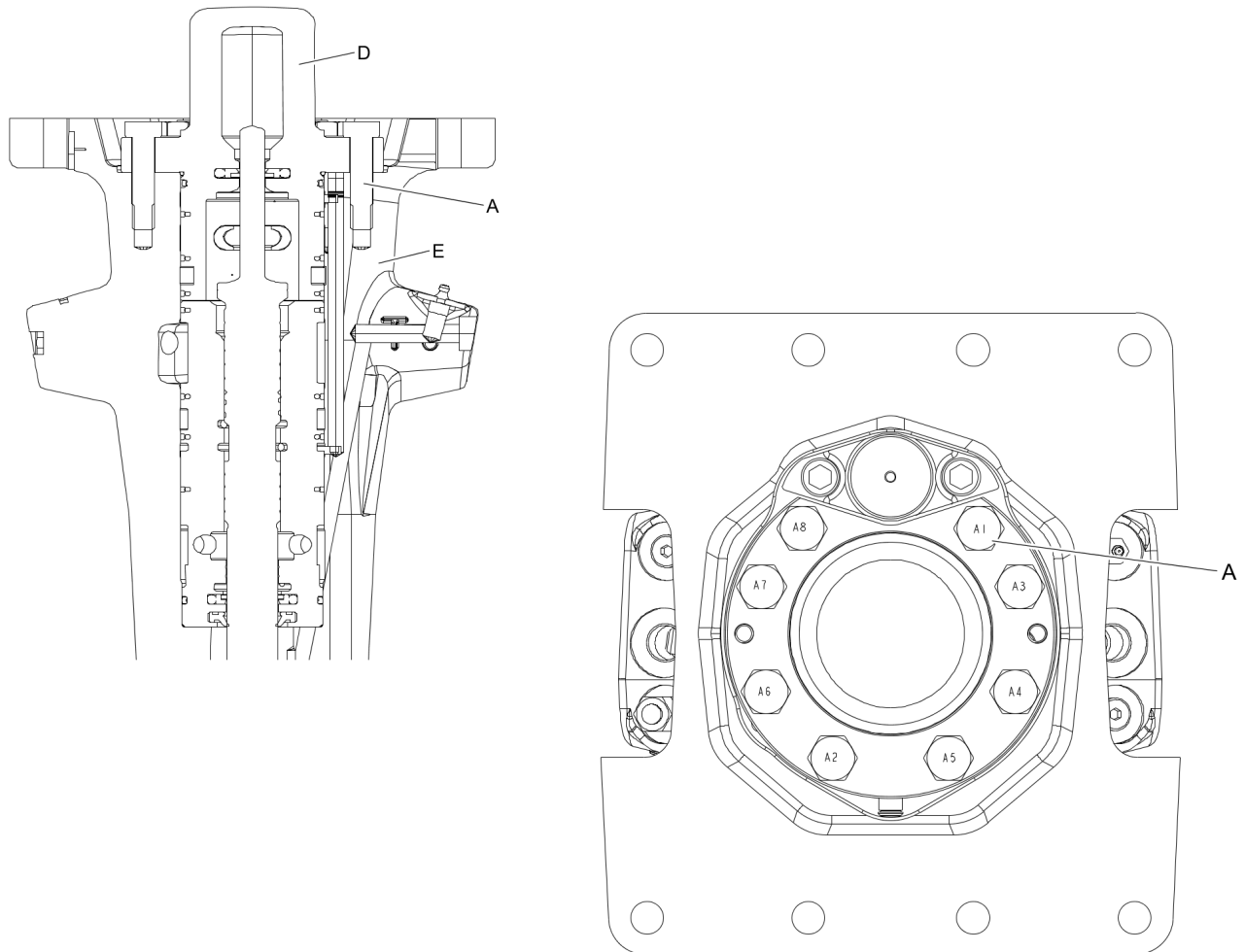


Refer to the DocMine web page for most up-to-date information. The printed information might be outdated.

Tue Oct 31 11:29:11 UTC 2023

This page intentionally left blank

## Mechanical Assembly instruction

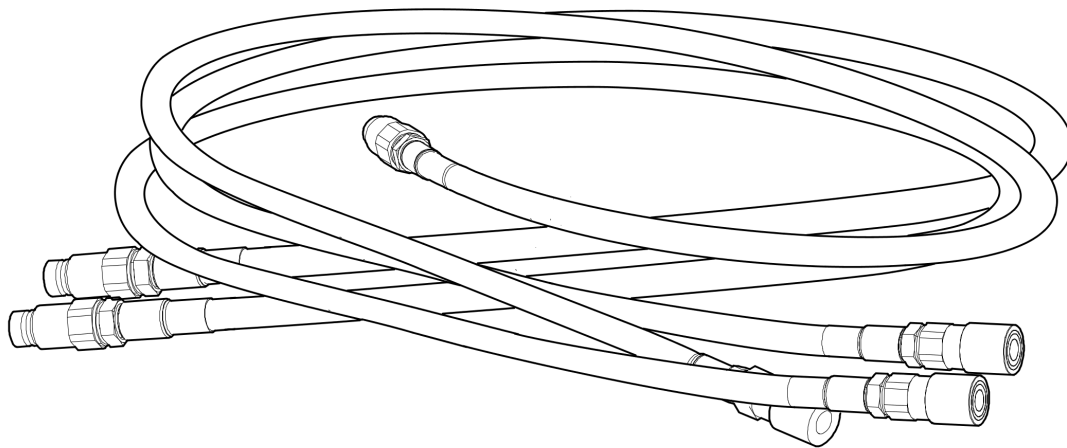


1. Press the back head (D) down on the hammer body(E).
2. Grease the screws (A) with Molykote® 1000 (Molykote is a registered trademark of Dow Corning Corporation), and manually fit them on the back head (D)
3. Torque the screws (A) in the order from A1 to A8.



This page intentionally left blank

## Options/accessories Hydraulic hoses



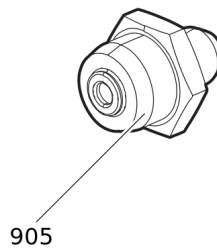
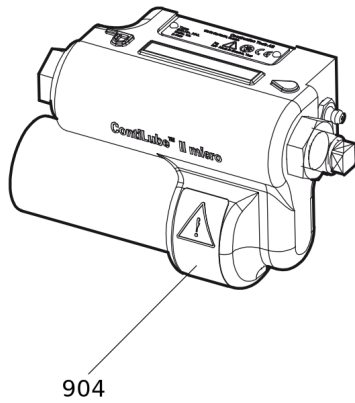
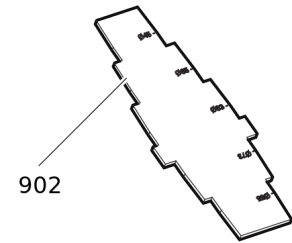
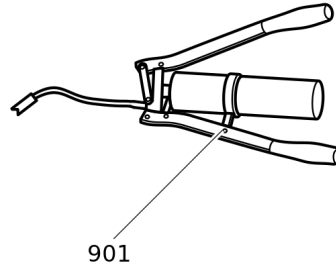
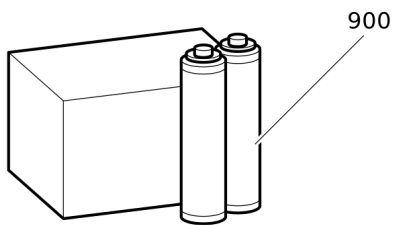
Item	Part No.	Name	Qty	L
-	3360332294	HYDRAULIC HOSE, I.D. 20 (0.79 in.), both ends M36 x 2 mm conical seal 24°, length 2,300 mm (90.5 in.)	2	
-	3363085947	HYDRAULIC HOSE, I.D. 20 (0.79 in.), both ends M36 x 2 mm conical seal 24°, length 2,800 mm (110.2 in.)	2	
-	3363094964	ADDITIONAL FITTING KIT	1	A

Comments for Page: Hydraulic hoses

(L)OCAL REMARKS

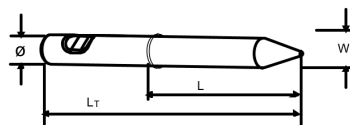
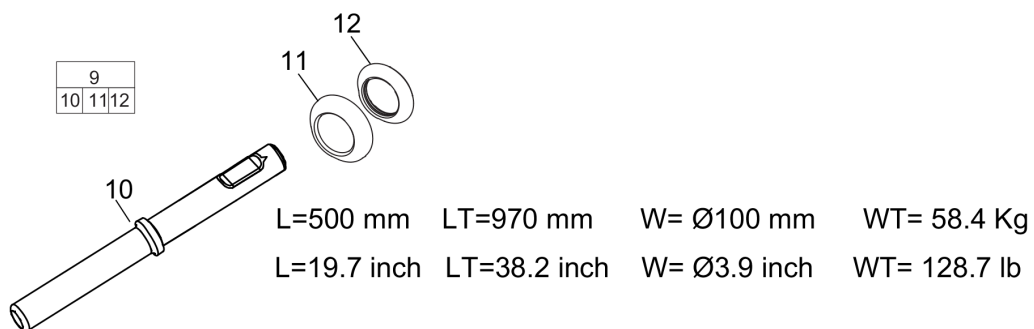
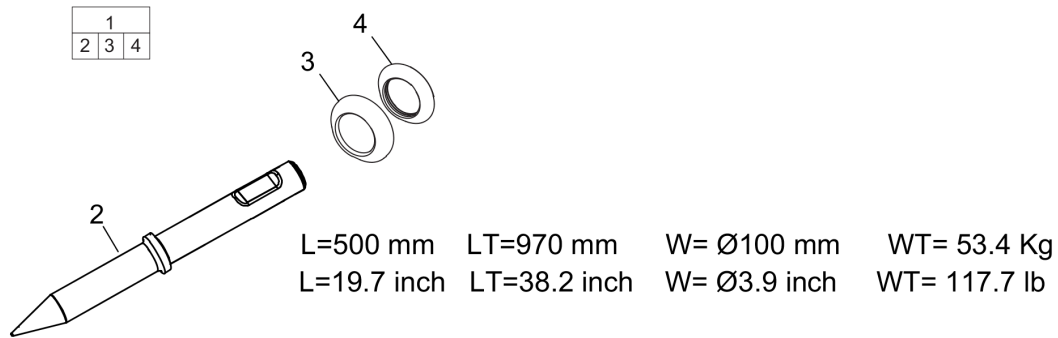
A | needed to fit two hoses to the hydraulic breaker

## Options/accessories Optional equipment



Item	Part No.	Name	Qty	L
900	3363122354	BIO CHISEL PASTE, 20 x 150 g (0.33 lbs)	1	A
900	3363122355	BIO CHISEL PASTE CARTRIDGE FOR GREASE GUN, 12 x 400 g (0.88 lbs)	1	
-	3363122357	BIO CHISEL PASTE CONTAINER 15 kg (33 lbs)	1	
-	3363122358	BIO CHISEL PASTE CONTAINER 45 kg (99 lbs)	1	
901	0909107100	LUBRICAT.GUN	1	
902	3315353100	BUSHING WEAR CONTROLLER	1	
904	3315383190	CONTILUBE II MICRO	1	
905	3363094459	NIPPLE, for charging the accumulator	1	
-	3360920415	FILLING DEVICE, for accumulator	1	
-	3361329803	FILLING HOSE, for charging the accumulator	1	

## Options/accessories Working Tools ClassicLine



Item	Part No.	Name	Qty	L
1	3083342710	MOIL POINT Tunnel	1	
2		MOIL POINT	1	
3	3315440403	FRONT SHIELD	1	
4	3315440404	DUST COVER	1	
5	3083342711	CHISEL (cross) Tunnel	1	
6		CHISEL (cross)	1	
7	3315440403	FRONT SHIELD	1	
8	3315440404	DUST COVER	1	
9	3083342712	BLUNT TOOL Tunnel	1	
10		BLUNT TOOL	1	
11	3315440403	FRONT SHIELD	1	
12	3315440404	DUST COVER	1	

Annex Environmental Product Compliance - REACH Declaration

NO EXPLODED VIEW  
AVAILABLE  
FOR THIS BOM



Item	Part No.	Name	Qty	L
26	-	Pressure relief valve, complete, Part No. 3315365800 - CAS No. 7439-92-1	-	

Comments for Page: Environmental Product Compliance - REACH Declaration

EU REACH Candidate List substances present in product listed above.





Any unauthorized use or copying of the contents or any part thereof is prohibited.  
This applies in particular to trademarks, model denominations, part numbers, and drawings.