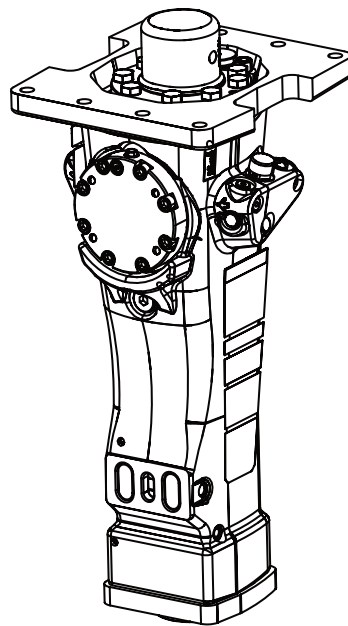


SB 202 Tunnel

Spare parts list

Hydraulic breakers

SB 202 Tunnel s/n BES127481 –



General information

This spare parts list applies to the following:

| Part number | Description |
|-------------|---------------|
| 8460030053 | SB 202 Tunnel |

Use only authorized parts. Any damage or malfunction caused by the use of unauthorized parts is not covered by Warranty or Product Liability. Any unauthorized use or copying of the contents or any part thereof is prohibited. This applies in particular to trademarks, model denominations, part numbers, and drawings.

Instructions for use

This spare parts list contains no safety regulations and is merely intended to assist in the ordering of spare parts.

For information about operating, servicing, or repairing, the relevant Safety and operating instructions must be consulted at all costs.

Please observe the safety instructions listed in the relevant Safety and operating instructions!

Service, repair and wear part kits

| | |
|----------------------------------|---|
| Label kit | 1 |
| Seal kit | 3 |
| Lower hammer part kit | 5 |
| Accumulator repair kit | 7 |

Mechanical

| | |
|--------------------------------------|----|
| Hydraulic breaker | 9 |
| Bushing oversize, complete | 13 |
| Restrictor, complete | 15 |
| Tightening torque | 17 |
| Dimensions mm (in.) | 19 |
| Assembly instruction | 20 |

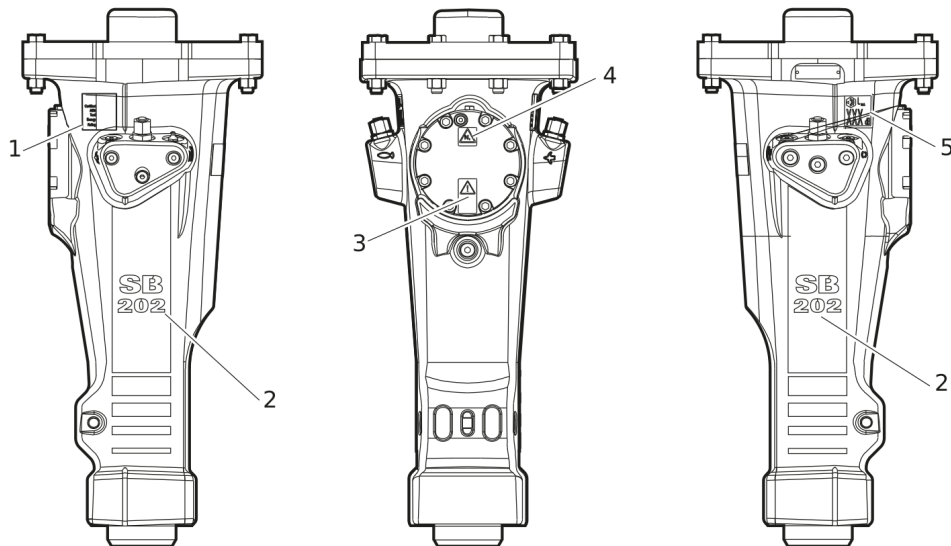
Options / accessories

| | |
|-------------------------------------|----|
| Optional equipment | 22 |
| Hydraulic hoses | 25 |
| Working Tools ClassicLine | 27 |

Annex

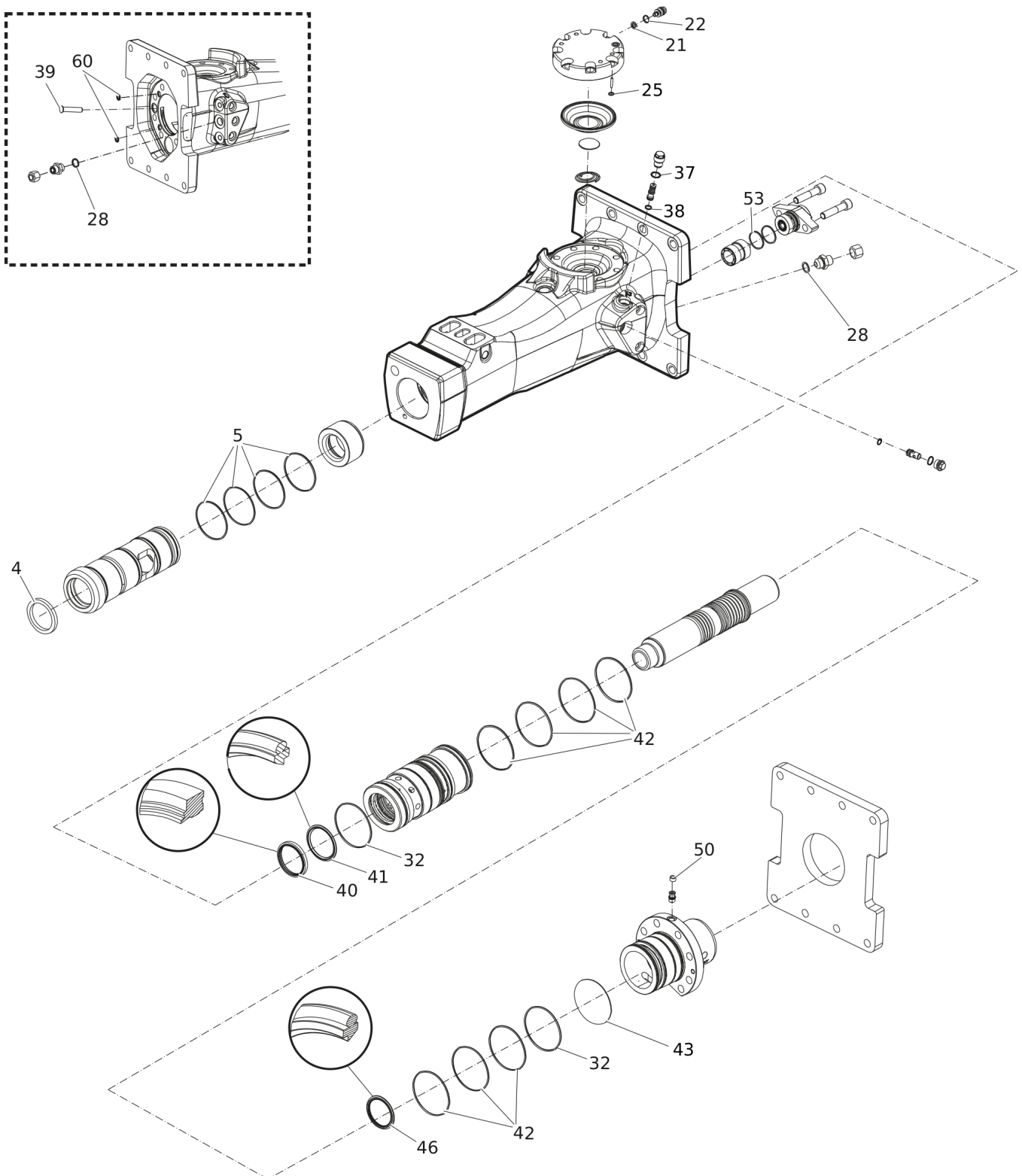
| | |
|--|----|
| Environmental Product Compliance - REACH Declaration | 29 |
|--|----|

Service, repair and wear part kits Label kit



| Item | Part No. | Name | Qty | L |
|------|------------|-------------------|-----|---|
| KIT | 3315294390 | LABEL KIT | 1 | |
| 1 | | AEM SIGN | 1 | |
| 2 | | PRODUCT LABEL | 2 | |
| 3 | | SAFETY LABEL | 1 | |
| 4 | | SAFETY LABEL | 1 | |
| 5 | | SOUND POWER LABEL | 1 | |

Service, repair and wear part kits Seal kit



Refer to the DocMine web page for most up-to-date information. The printed information might be outdated.

Fri Nov 10 08:17:34 UTC 2023

| Item | Part No. | Name | Qty | L |
|------|------------|-----------------|-----|---|
| KIT | 3382070079 | SEAL KIT | 1 | |
| 4 | 3315356200 | SCRAPER RING | 1 | |
| 5 | 0663210498 | O-RING | 4 | |
| 21 | 3115329002 | SEAL RING | 1 | |
| 22 | 0663212000 | O-RING | 1 | |
| 25 | 0663211400 | O-RING | 1 | |
| 28 | 0664000003 | SEAL RING | 2 | |
| 32 | 0663990036 | SEAL RING | 2 | |
| 37 | 0663903201 | O-RING | 1 | A |
| 38 | 0663905401 | O-RING | 1 | B |
| 39 | 3315336700 | PLUG | 1 | |
| 40 | 0665909956 | WIPER | 1 | |
| 41 | 0665070130 | PISTEN ROD SEAL | 1 | |
| 42 | 0663210494 | O-RING | 7 | |
| 43 | 0663211516 | O-RING | 1 | C |
| 46 | 0665070129 | PISTON ROD SEAL | 1 | |
| 50 | 3315280800 | VALVE RUBBER | 1 | |
| 53 | 0663211444 | O-RING | 2 | |
| 60 | 0665090014 | SEAL RING | 2 | |

Comments for Page: Seal kit

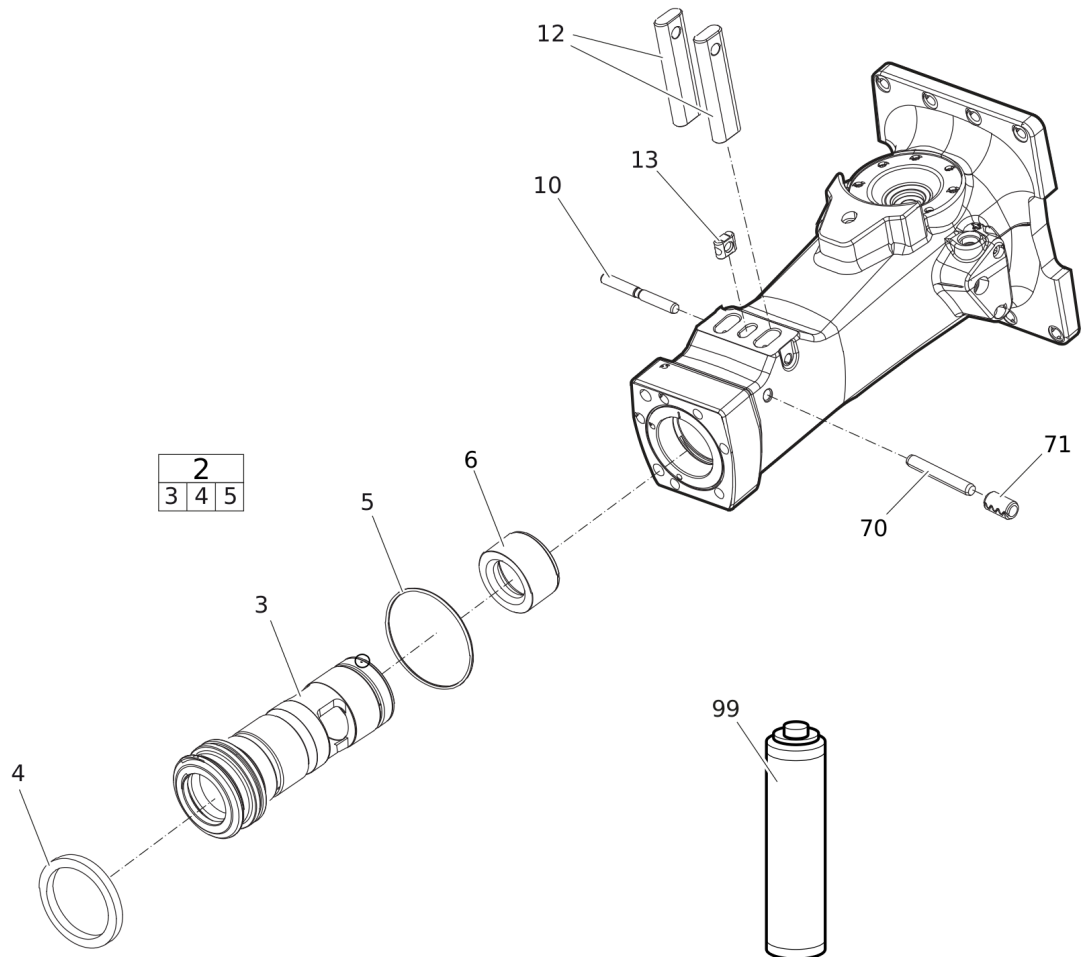
(L)OCAL REMARKS

A | Ø 15.6 x 1.78 (Ø 0.61 x 0.07 in.)

B | Ø 10.82 x 1.78 mm (Ø 0.43 x 0.07 in.) 90 shore

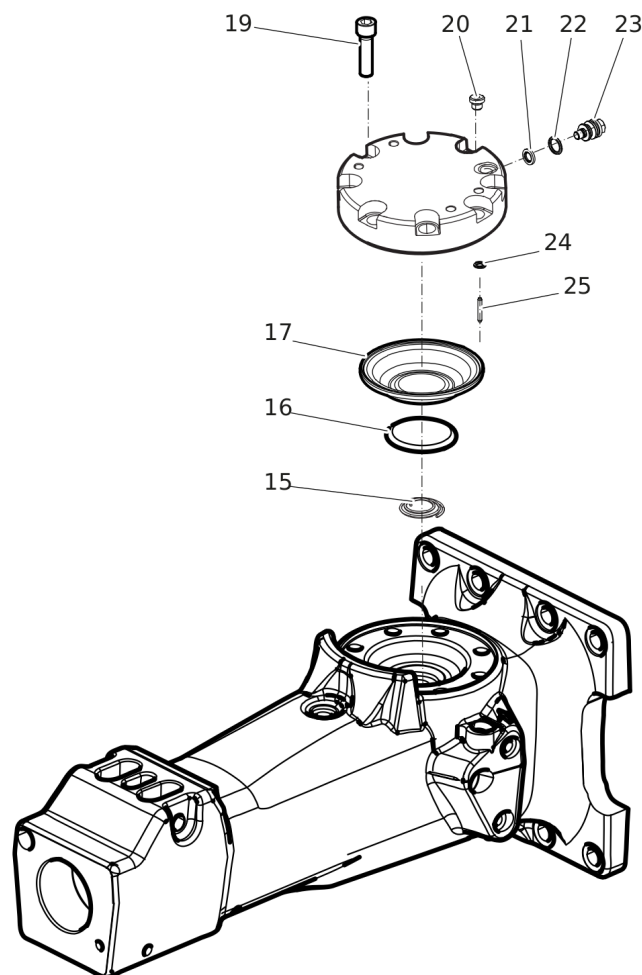
C | Ø 101.27 x 2.62 mm (Ø 3.99 x 0.10 in.)

Service, repair and wear part kits Lower hammer part kit



| Item | Part No. | Name | Qty | L |
|------|------------|--|-----|---|
| KIT | 3382070194 | LOWER HAMMER PART KIT | 1 | |
| 2 | 3382070192 | BUSHING TUNNEL, complete | 1 | |
| 3 | | BUSHING, Ø 90 mm (Ø 3.54 in.) | 1 | |
| 4 | 3315356200 | SCRAPER RING | 1 | |
| 5 | 0663210498 | O-RING | 1 | |
| 6 | 3315277800 | STOP RING | 1 | |
| 10 | 3315135010 | LOCK PIN | 1 | |
| 12 | 3315134910 | RETAINER BAR | 2 | |
| 13 | 3315141900 | LOCK BUFFER | 1 | |
| 70 | 3315434910 | BUSHING PIN | 1 | |
| 71 | 0108110322 | SPRING PIN | 1 | |
| 99 | | BIO CHISEL PASTE CARTRIDGE, 1 x 400 g (0.88 lbs) | 1 | |

Service, repair and wear part kits Accumulator repair kit



| Item | Part No. | Name | Qty | L |
|------|------------|------------------------|-----|---|
| KIT | 3382070078 | ACCUMULATOR REPAIR KIT | 1 | |
| 15 | 3315359600 | COIL SPRING | 1 | |
| 16 | 3315359500 | DIAPHRAGM SUPPORT | 1 | |
| 17 | 3315289000 | DIAPHRAGM | 1 | |
| 19 | 0211196534 | HEX SOCK. SCREW | 8 | A |
| 20 | 0686371805 | PLUG | 1 | B |
| 21 | 3115329002 | SEAL RING | 1 | |
| 22 | 0663212000 | O-RING | 1 | |
| 23 | 3315366000 | VALVE | 1 | |
| 24 | 0663211400 | O-RING | 1 | |
| 25 | 0101414000 | PIN | 1 | |

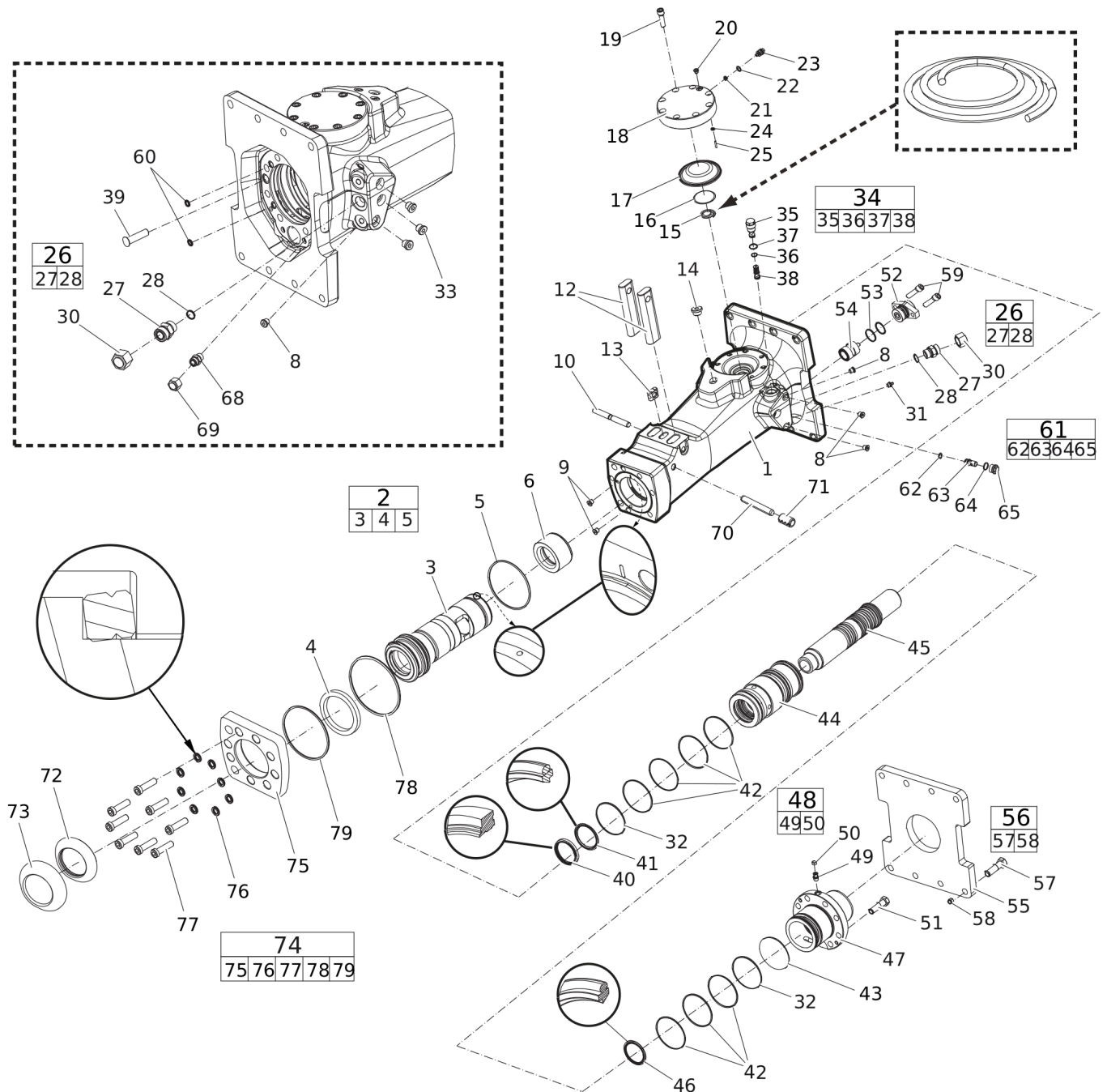
Comments for Page: Accumulator repair kit

(L)OCAL REMARKS

A | Screw with extra high fatigue strength.

B | VSTI R 1/8-ED

Mechanical Hydraulic breaker



Refer to the DocMine web page for most up-to-date information. The printed information might be outdated.

Fri Nov 10 08:17:37 UTC 2023

| Item | Part No. | Name | Qty | L |
|------|------------|---------------------------------|-----|---|
| 1 | | BREAKER BODY | 1 | |
| 2 | 3382070192 | BUSHING TUNNEL, complete | 1 | A |
| 3 | | BUSHING, Ø 90 mm (Ø 3.54 in.) | 1 | |
| 4 | 3315356200 | SCRAPER RING | 1 | |
| 5 | 0663210498 | O-RING | 4 | |
| 6 | 3315277800 | STOP RING | 1 | |
| 8 | 0686644207 | PLUG | 4 | |
| 9 | 3315395200 | WATER NOSSLE | 2 | |
| 10 | 3315135010 | LOCK PIN | 1 | |
| 12 | 3315134910 | RETAINER BAR | 2 | |
| 13 | 3315141900 | LOCK BUFFER | 1 | |
| 14 | 0686371803 | PLUG | 1 | |
| 15 | 3315359600 | COIL SPRING | 1 | |
| 16 | 3315359500 | DIAPHRAGM SUPPORT | 1 | |
| 17 | 3315289000 | DIAPHRAGM | 1 | |
| 18 | 3315282400 | ACCUMULATOR HOUSE | 1 | |
| 19 | 0211196534 | HEX SOCK. SCREW | 8 | |
| 20 | 0686371805 | PLUG | 1 | |
| 21 | 3115329002 | SEAL RING | 1 | |
| 22 | 0663212000 | O-RING | 1 | |
| 23 | 3315366000 | VALVE | 1 | |
| 24 | 0101414000 | PIN | 1 | |
| 25 | 0663211400 | O-RING | 1 | |
| 26 | 0580001846 | PIPE COUPLING | 2 | |
| 27 | | NIPPLE | 1 | |
| 28 | 0664000003 | SEAL RING | 1 | |
| 30 | 3361353486 | CAP | 2 | |
| 31 | 3360433774 | GREASE NIPPLE | 1 | |
| 32 | 0663990036 | SEAL RING | 2 | |
| 33 | 0686371801 | PLUG | 3 | |
| 34 | 3315335000 | PRESSURE RELIEF VALVE, complete | 1 | B |
| 35 | | VALVE PLUG | 1 | |
| 36 | | PRESSURE RELIEF VALVE | 1 | |
| 37 | 0663903201 | O-RING | 1 | |
| 38 | 0663905401 | O-RING | 1 | |
| 39 | 3315336700 | PLUG | 1 | |
| 40 | 0665909956 | WIPER | 1 | |

Refer to the DocMine web page for most up-to-date information. The printed information might be outdated.

Fri Nov 10 08:17:37 UTC 2023

| Item | Part No. | Name | Qty | L |
|------|------------|-----------------------------------|-----|---|
| 41 | 0665070130 | PISTEN ROD SEAL | 1 | |
| 42 | 0663210494 | O-RING | 7 | |
| 43 | 0663211516 | O-RING | 1 | |
| 44 | 3315277420 | LINER | 1 | |
| 45 | 3315441900 | PISTON | 1 | |
| 46 | 0665070129 | PISTON ROD SEAL | 1 | |
| 47 | 3315293110 | BACK HEAD | 1 | |
| 48 | 3315244881 | CHECK VALVE, complete | 1 | |
| 49 | | CHECK VALVE | 1 | |
| 50 | 3315280800 | VALVE RUBBER | 1 | |
| 51 | 0147148103 | SCREW, HEX HEAD | 8 | |
| 52 | 3315352020 | VALVE COVER | 1 | |
| 53 | 0663211444 | O-RING | 2 | |
| 54 | 3315277600 | CONTROL VALVE | 1 | |
| 55 | 3315295100 | BASE PLATE | 1 | |
| 56 | 3315296490 | BOLT KIT | 1 | |
| 57 | | SCREW M6 x 20 mm (0.79 in.) 8.8 | 8 | |
| 58 | | NUT, M16 | 8 | |
| 59 | 0211110349 | SCREW, M14 x 65 mm (2.56 in.) | 2 | |
| 60 | 0665090014 | SEAL RING | 2 | |
| 61 | 3315369477 | RESTRICTOR, complete | 1 | |
| 62 | 0663210421 | O-RING | 1 | |
| 63 | | RESTRICTOR, Ø 7.7 mm (Ø 0.30 in.) | 1 | |
| 64 | 0663212141 | O-RING | 1 | |
| 65 | 3315369200 | RESTRICTOR PLUG | 1 | |
| 68 | 3176634800 | NIPPLE | 1 | |
| 69 | 3176542900 | CAP | 1 | |
| 70 | 3315434910 | BUSHING PIN | 1 | |
| 71 | 0108110322 | SPRING PIN | 1 | |
| 72 | 3315440402 | DUST COVER | 1 | |
| 73 | 3315440401 | FRONT SHIELD | 1 | |
| 74 | 3382070193 | WEAR PLATE, complete | 1 | |
| 75 | | WEAR PLATE | 1 | |
| 76 | 5750533237 | LOCK WASHER | 8 | |
| 77 | 3315431100 | SCREW | 8 | |
| 78 | 0663210787 | O-RING | 1 | |
| 79 | 0663211198 | O-RING | 1 | |

Refer to the DocMine web page for most up-to-date information. The printed information might be outdated.

Fri Nov 10 08:17:37 UTC 2023

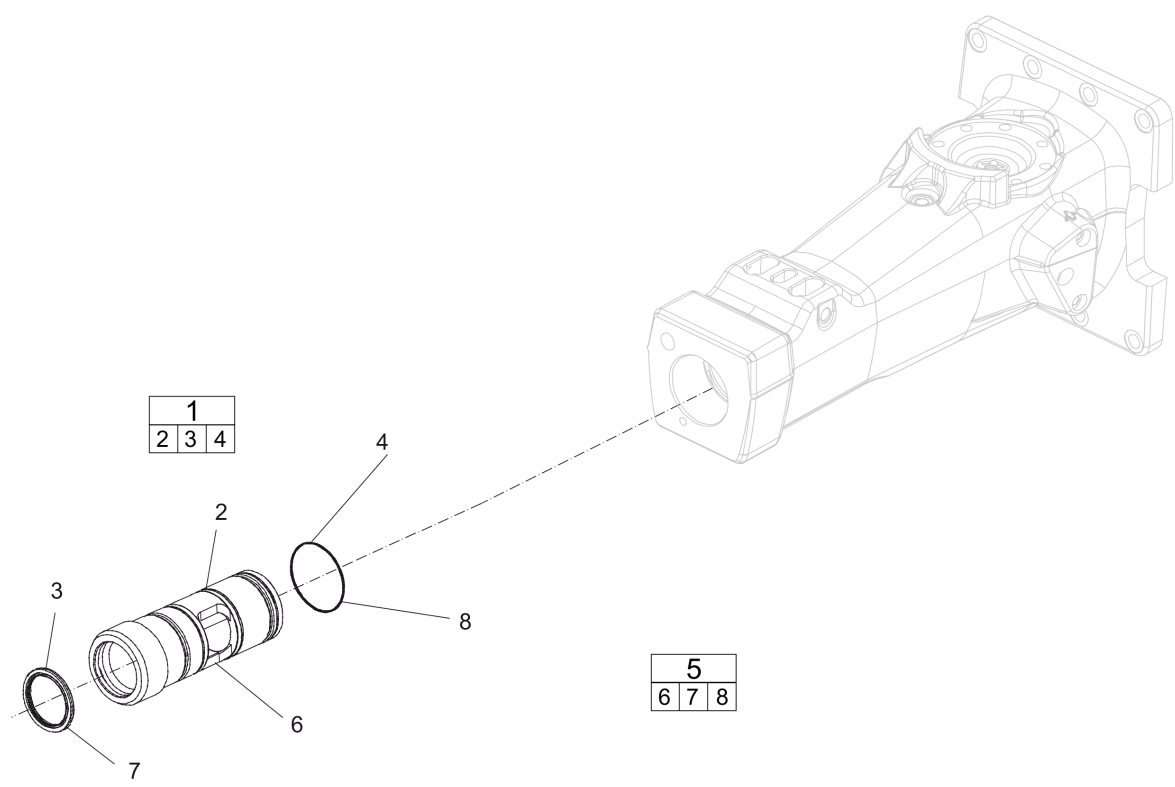
Comments for Page: Hydraulic breaker

(L)OCAL REMARKS

A | For more bushings, see section "Bushing oversize, complete".

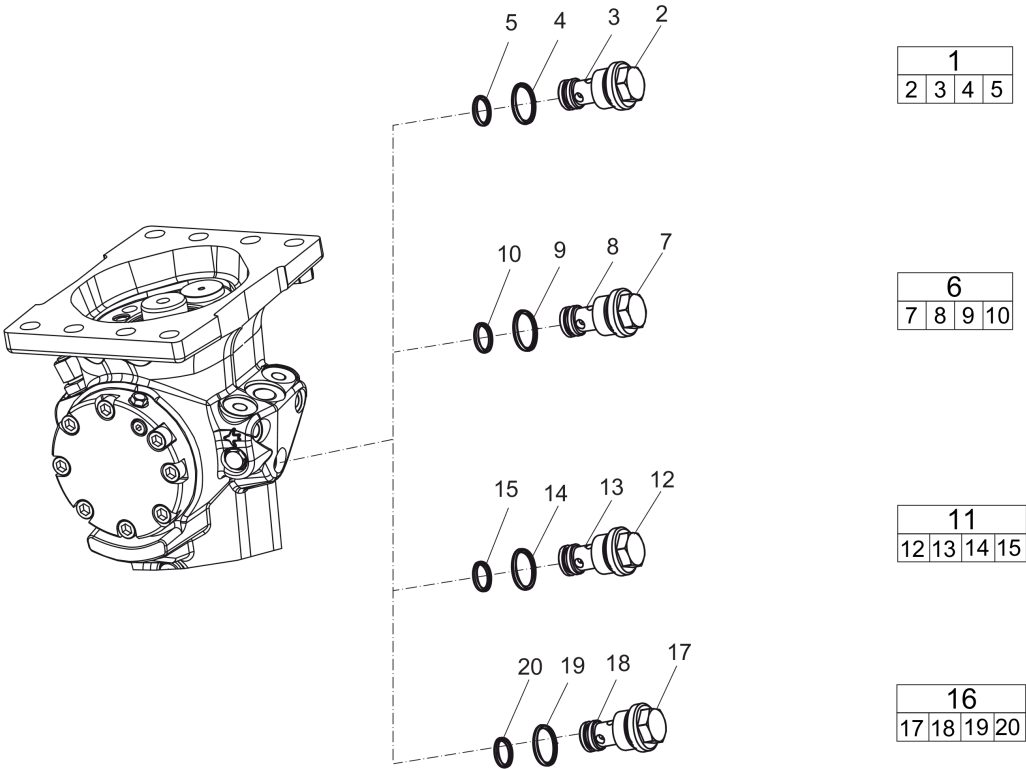
B | CAS No. see chapter "Environmental Product Compliance - REACH Declaration"

Mechanical Bushing oversize, complete



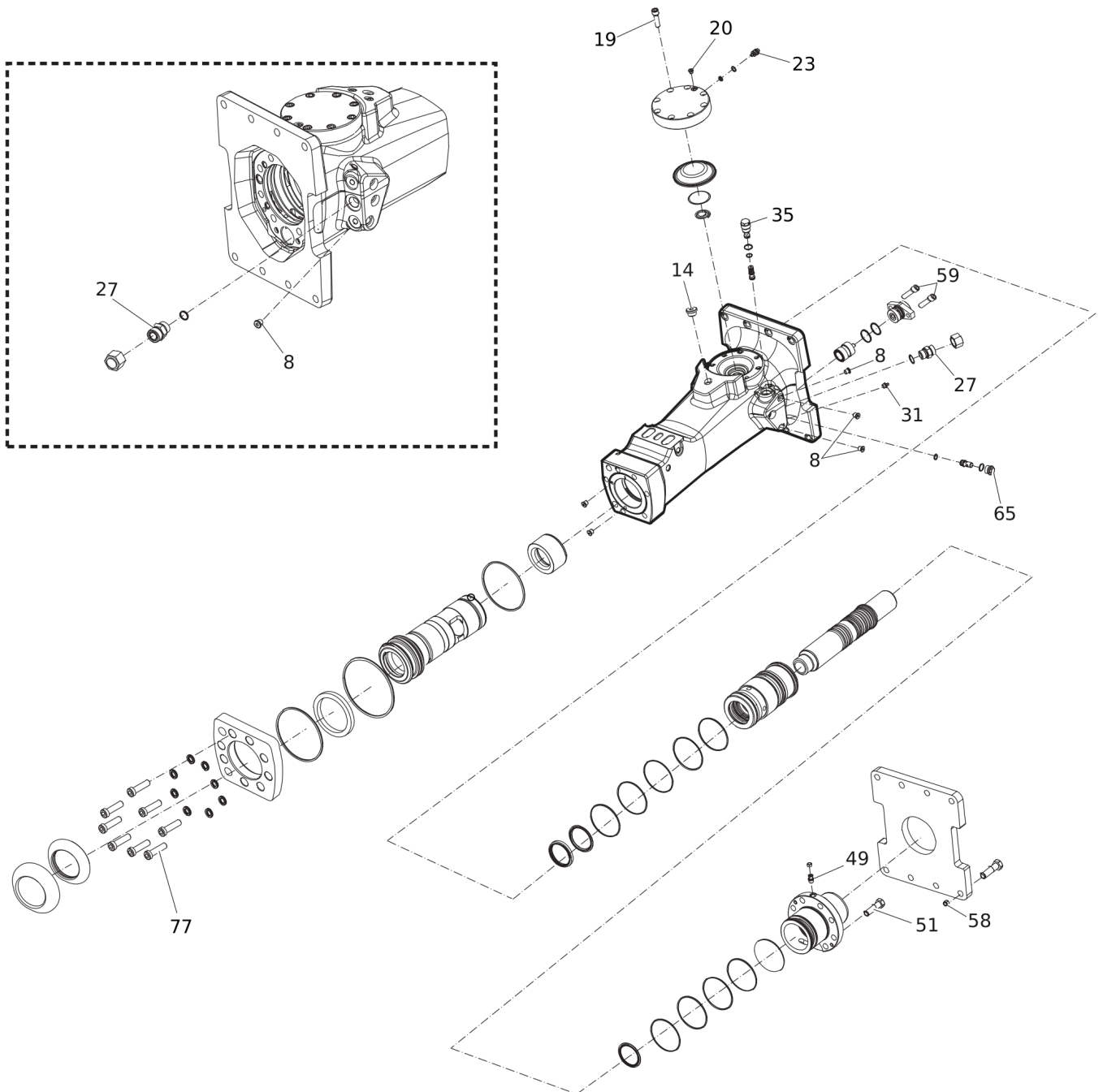
| Item | Part No. | Name | Qty | L |
|------|------------|--------------------------------|-----|---|
| 1 | 3382070195 | BUSHING OVERSIZE, complete | 1 | |
| 2 | | BUSHING, Ø 91.5 mm (Ø 3.6 in.) | 1 | |
| 3 | 3315356200 | SCRAPER RING | 1 | |
| 4 | 0663210498 | O-RING | 1 | |
| 5 | 3382070196 | BUSHING OVERSIZE, complete | 1 | |
| 6 | | BUSHING, Ø 93 mm (Ø 3.7 in.) | 1 | |
| 7 | 3315356200 | SCRAPER RING | 1 | |
| 8 | 0663210498 | O-RING | 1 | |

Mechanical Restrictor, complete



| Item | Part No. | Name | Qty | L |
|------|------------|--|-----|---|
| 1 | 3315369460 | RESTRICTOR, complete | 1 | |
| 2 | 3315369200 | RESTRICTOR PLUG | 1 | |
| 3 | | RESTRICTOR, Ø 6.0 mm (Ø 0.24 in.) | 1 | |
| 4 | 0663212141 | O-RING | 1 | |
| 5 | 0663210421 | O-RING | 1 | |
| 6 | 3315369454 | RESTRICTOR, complete | 1 | |
| 7 | 3315369200 | RESTRICTOR PLUG | 1 | |
| 8 | | RESTRICTOR, Ø 5.4 mm (Ø 0.21 in.) | 1 | |
| 9 | 0663212141 | O-RING | 1 | |
| 10 | 0663210421 | O-RING | 1 | |
| 11 | 3315369450 | RESTRICTOR, complete (optional) | 1 | |
| 12 | 3315369200 | RESTRICTOR PLUG | 1 | |
| 13 | | RESTRICTOR SLEEVE, Ø 5.0 mm (Ø 0.20 in.) | 1 | |
| 14 | 0663212141 | O-RING | 1 | |
| 15 | 0663210421 | O-RING | 1 | |
| 16 | 3315369445 | RESTRICTOR, complete (optional) | 1 | |
| 20 | 0663210421 | O-RING | 1 | |
| 19 | 0663212141 | O-RING | 1 | |
| 18 | | RESTRICTOR SLEEVE, Ø 4.5 mm (Ø 0.18 in.) | 1 | |
| 17 | 3315369200 | RESTRICTOR PLUG | 1 | |

Mechanical Tightening torque



Refer to the DocMine web page for most up-to-date information. The printed information might be outdated.

Fri Nov 10 08:17:38 UTC 2023

| Item | Part No. | Name | Qty | L |
|------|----------|---|-----|---|
| 8 | | PLUG - 30 Nm (22 ft lbf) | - | A |
| 14 | | HEXAGON SOCKET PLUG - 80 Nm (59 ft lbf) | - | A |
| 19 | | HEXAGON SOCKET PLUG - 120 Nm (89 ft lbf) | - | B |
| 20 | | PLUG - 20 Nm (15 ft lbf) | - | |
| 23 | | VALVE - 27 Nm (20 ft lbf) | - | |
| 27 | | NIPPLE - 120 Nm (89 ft lbf) | - | |
| 31 | | GREASE NIPPLE - 30 Nm (22 ft lbf) | - | |
| 35 | | PRESSURE RELIEF VALVE - 60 Nm (44 ft lbf) | | |
| 49 | | CHECK VALVE - 30 Nm (22 ft lbf) | - | A |
| 51 | | HEXAGON HEAD SCREW M16 x 60 - 180 Nm (133 ft lbf) | - | B |
| 58 | | NUT M 16 - 200 Nm (148 ft lbf) | - | B |
| 59 | | SCREW M14 x 65 - 180 Nm (133 ft lbf) | - | |
| 65 | | RESTRICTOR PLUG - 80 Nm (59 ft lbf) | - | |
| 77 | | SCREW M12 x 55 - 240 Nm (177 ft lbf) | | |

Comments for Page: Tightening torque

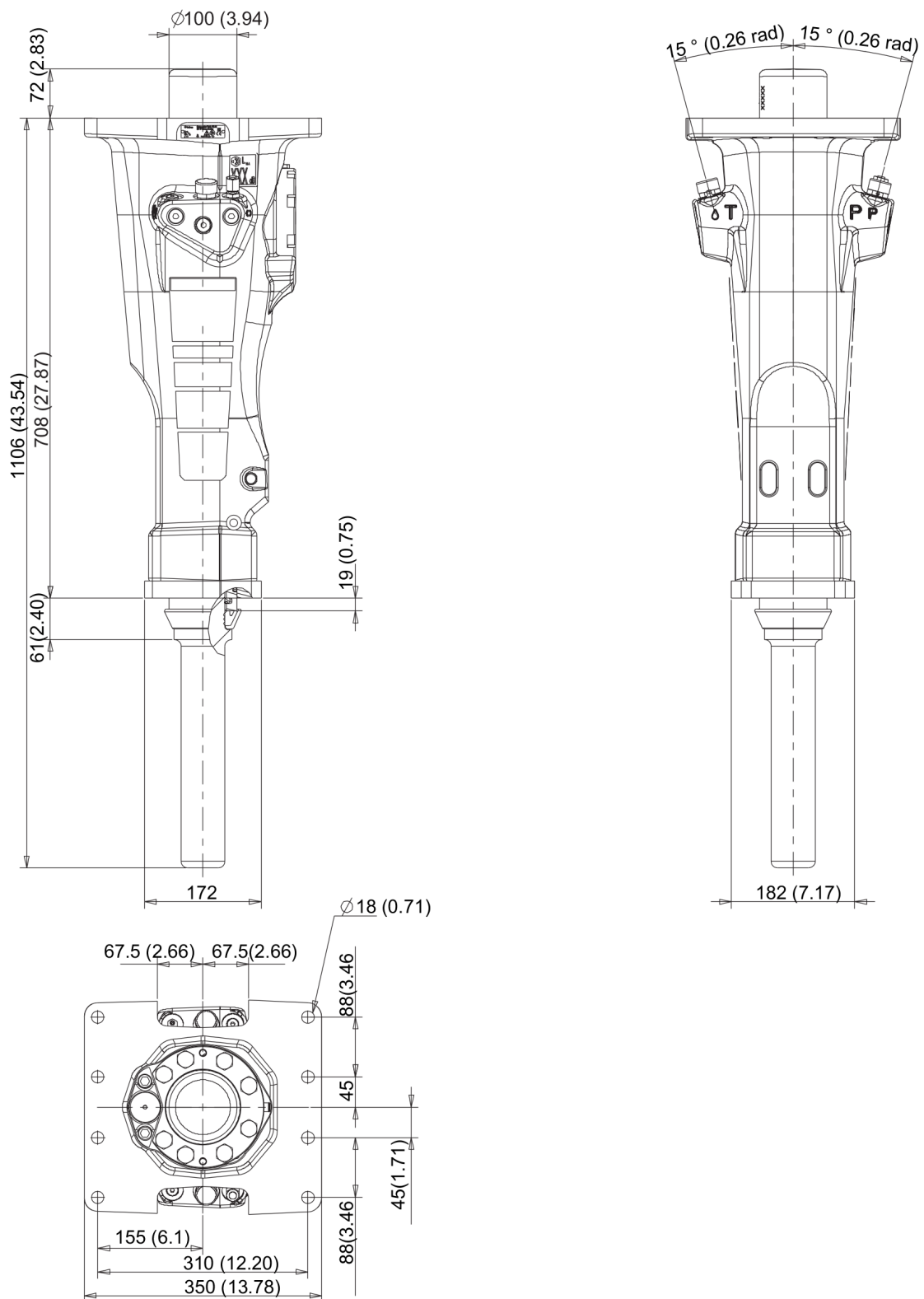
LOCTITE is a registered trademark of Henkel Corporation. 243 is a trademark of Henkel Corporation. Molycote is a registered trademark of Dow Corning Corporation.

(L)OCAL REMARKS

A | LOCTITE® 243™

B | Molycote®

Mechanical Dimensions mm (in.)

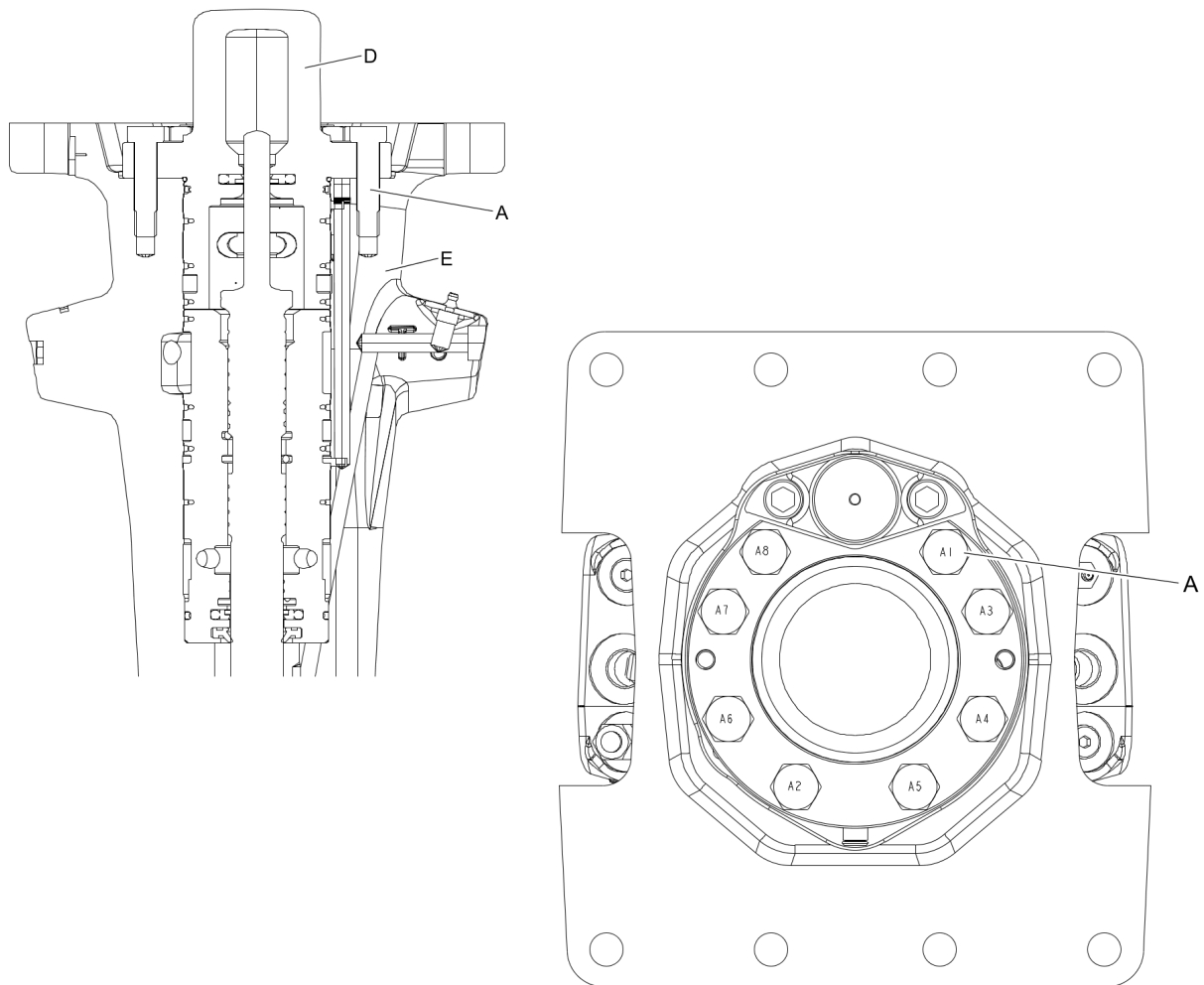


Refer to the DocMine web page for most up-to-date information. The printed information might be outdated.

Fri Nov 10 08:17:38 UTC 2023

This page intentionally left blank

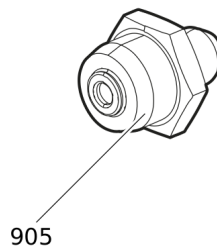
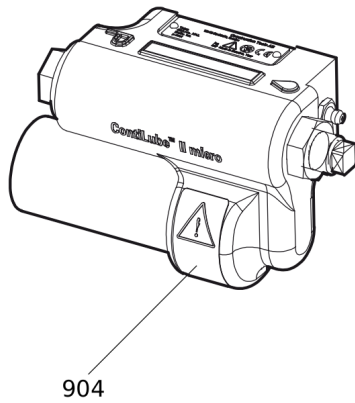
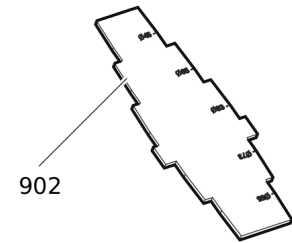
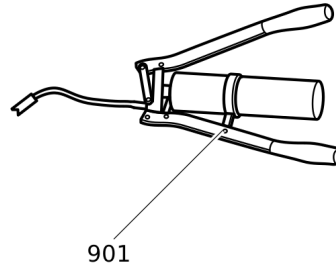
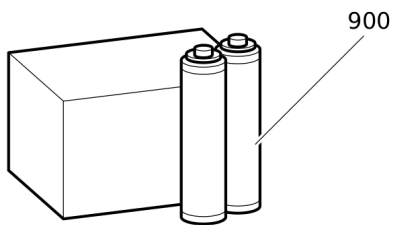
Mechanical Assembly instruction



1. Press the back head (D) down on the hammer body(E).
2. Grease the screws (A) with Molykote® 1000 (Molykote is a registered trademark of Dow Corning Corporation), and manually fit them on the back head (D)
3. Torque the screws (A) in the order from A1 to A8.

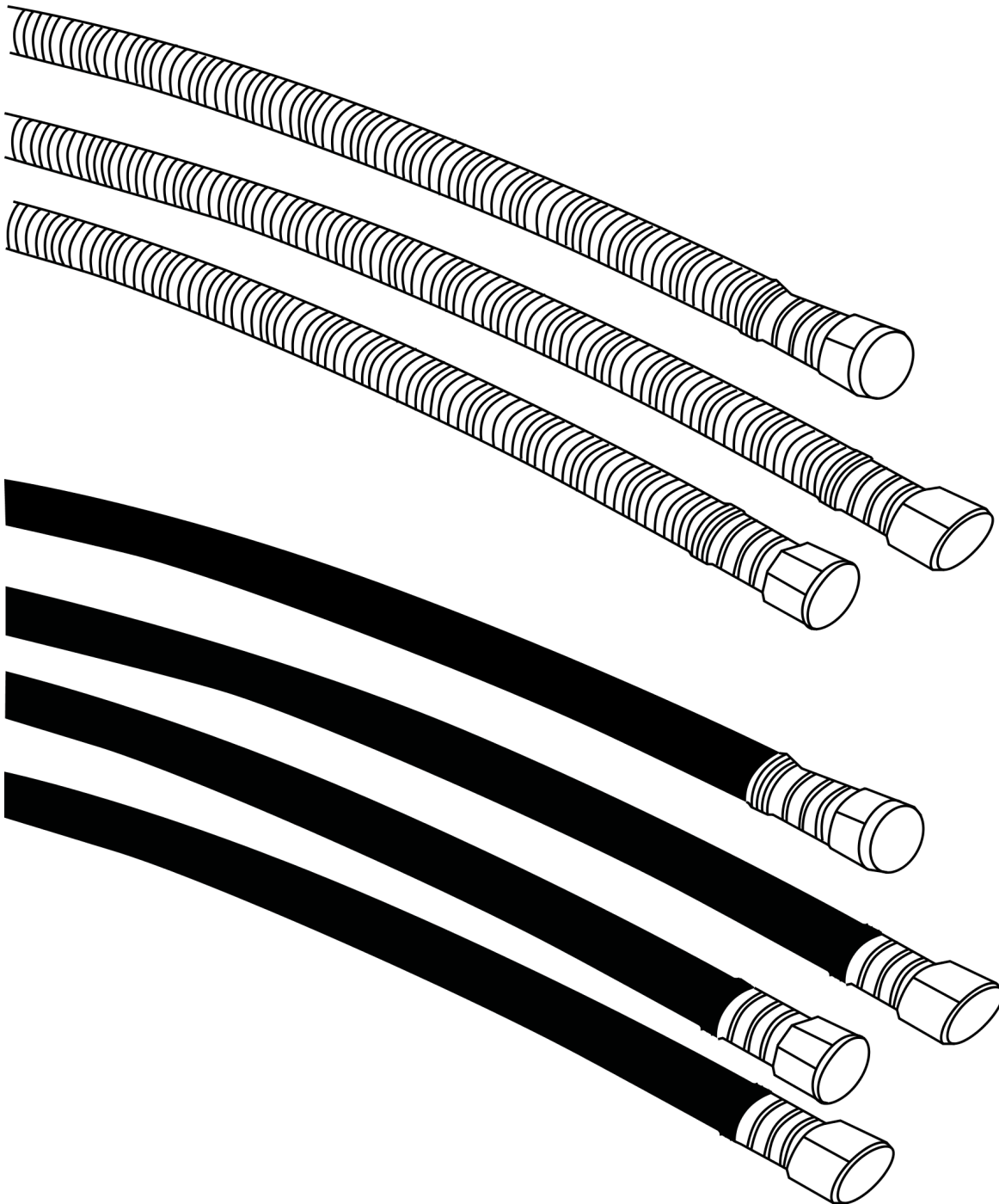
This page intentionally left blank

Options / accessories Optional equipment



| Item | Part No. | Name | Qty | L |
|------|------------|--|-----|---|
| 900 | 3363122354 | BIO CHISEL PASTE, 20 x 150 g (0.33 lbs) | 1 | |
| 900 | 3363122355 | BIO CHISEL PASTE CARTRIDGE FOR GREASE GUN, 12 x 400 g (0.88 lbs) | 1 | |
| - | 3363122357 | BIO CHISEL PASTE CONTAINER 15 kg (33 lbs) | 1 | |
| - | 3363122358 | BIO CHISEL PASTE CONTAINER 45 kg (99 lbs) | 1 | |
| - | 3363094669 | FILLING DEVICE | 1 | |
| - | 3363066411 | FILLING DEVICE | 1 | |
| - | 3315383980 | FILLING ADAPTER | 1 | |
| 901 | 0909107100 | LUBRICAT.GUN | 1 | |
| 902 | 3315353100 | BUSHING WEAR CONTROLLER | 1 | |
| 904 | 3315383190 | CONTILUBE II MICRO | 1 | |
| 905 | 3363094459 | NIPPLE, for charging the accumulator | 1 | |
| - | 3360920415 | FILLING DEVICE, for accumulator | 1 | |
| - | 3361329803 | FILLING HOSE, for charging the accumulator | 1 | |
| - | 3315386780 | WELDING KIT, universal | 1 | |
| - | 3315386280 | HOSE KIT, universal | 1 | |

Options / accessories Hydraulic hoses



| Item | Part No. | Name | Qty | L |
|------|------------|--|-----|---|
| | - | HEAVY DUTY CONNECTION HOSES | - | |
| - | 3360995717 | HYDRAULIC HOSE, both ends 18 L (M26 x 1.5) length 1500 mm (59 in.) | 2 | |
| - | 3362235159 | HYDRAULIC HOSE, both ends 18 L (M26 x 1.5) length 2000 mm (79 in.) | 2 | |
| - | 3363115426 | HYDRAULIC HOSE, both ends 18 L (M26x1.5) length 1750 mm (68 in.) | 2 | |
| - | 3363083313 | HYDRAULIC HOSE, both ends 18 L (M26 x 1.5) length 2400 mm (95 in.) | 2 | |
| | - | STANDARD CONNECTION HOSES | - | |
| - | 3363491002 | HYDRAULIC HOSE, both ends 18 L (M26x1.5) length 1500 mm (59 in.) | 2 | |
| - | 3363115423 | HYDRAULIC HOSE, both ends 18 L (M26x1.5) length 1750 mm (68 in.) | 2 | |
| - | 3363115424 | HYDRAULIC HOSE, both ends 18 L (M26x1.5) length 2000 mm (79 in.) | 2 | |
| - | 3363115425 | HYDRAULIC HOSE, both ends 18 L (M26x1.5) length 2400 mm (95 in.) | 2 | |
| - | 3363098018 | ADDITIONAL FITTING KIT | 1 | A |

Comments for Page: Hydraulic hoses

(L)OCAL REMARKS

A | Needed to fit two hoses to the hydraulic breaker

Options / accessories Working Tools ClassicLine

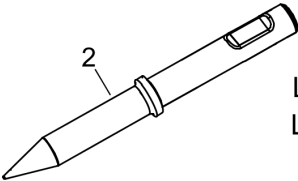
1

234

3

4

2



L=350 mm

LT=680 mm

W= Ø65 mm

WT= 15.8 Kg

L=13.8 inch

LT=26.8 inch

W= Ø2.6 inch

WT= 34.8 lb

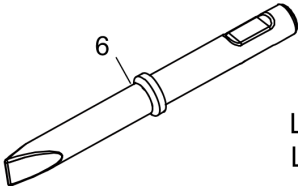
5

678

7

8

6



L=350 mm

LT=680 mm

W= Ø65 mm

WT= 16.5 Kg

L=13.8 inch

LT=26.8 inch

W= Ø2.6 inch

WT= 36.4 lb

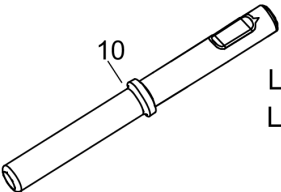
9

101112

11

12

10



L=350 mm

LT=680 mm

W= Ø65 mm

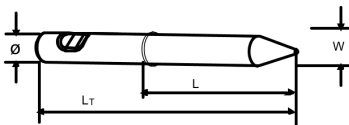
WT= 17.5 Kg

L=13.8 inch

LT=26.8 inch

W= Ø2.6 inch

WT= 38.6 lb



| Item | Part No. | Name | Qty | L |
|------|------------|-----------------------|-----|---|
| 1 | 3083342701 | MOIL POINT TUNNEL | 1 | |
| 2 | | MOIL POINT | 1 | |
| 3 | 3315440401 | FRONT SHIELD | 1 | |
| 4 | 3315440402 | DUST COVER | 1 | |
| 5 | 3083342702 | CHISEL (cross) TUNNEL | 1 | |
| 6 | | CHISEL (cross) | 1 | |
| 7 | 3315440401 | FRONT SHIELD | 1 | |
| 8 | 3315440402 | DUST COVER | 1 | |
| 9 | 3083342703 | BLUNT TOOL TUNNEL | 1 | |
| 10 | | BLUNT TOOL | 1 | |
| 11 | 3315440401 | FRONT SHIELD | 1 | |
| 12 | 3315440402 | DUST COVER | 1 | |

Annex Environmental Product Compliance - REACH Declaration

NO EXPLODED VIEW
AVAILABLE
FOR THIS BOM

| Item | Part No. | Name | Qty | L |
|------|----------|--|-----|---|
| 25 | - | Pressure relief valve, complete, Part No. 3315365800 - CAS No. 7439-92-1 | - | |

Comments for Page: Environmental Product Compliance - REACH Declaration

EU REACH Candidate List substances present in product listed above.

Any unauthorized use or copying of the contents or any part thereof is prohibited.
This applies in particular to trademarks, model denominations, part numbers, and drawings.