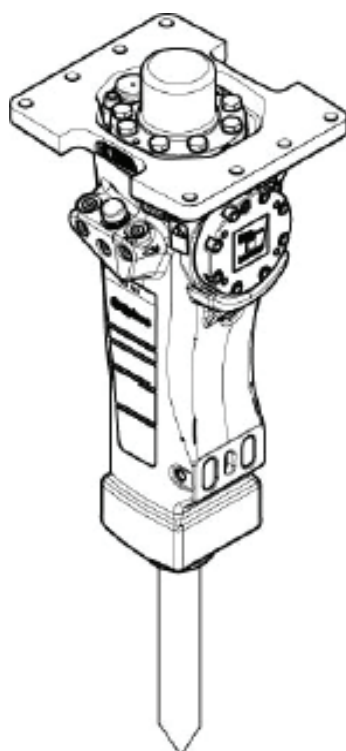


SB 202

Spare parts list Hydraulic breakers

SB 202 s/n BES051618 –



General information

This spare parts list applies to the following:

Part number	Description
8460030050	SB 202
8460030054	SB 202 HATCON
8460030057	SB 202 HATCON LTE

Use only authorized parts. Any damage or malfunction caused by the use of unauthorized parts is not covered by Warranty or Product Liability. Any unauthorized use or copying of the contents or any part thereof is prohibited. This applies in particular to trademarks, model denominations, part numbers, and drawings.

Instructions for use

This spare parts list contains no safety regulations and is merely intended to assist in the ordering of spare parts.

For information about operating, servicing, or repairing, the relevant Safety and operating instructions must be consulted at all costs.

Please observe the safety instructions listed in the relevant Safety and operating instructions!

Service, repair and wear part kits

Label kit	1
Seal kit	3
Lower hammer part kit	5
Accumulator repair kit	7

Mechanical

Hydraulic breaker	9
HATCON (Horizontal)	12
Bushing oversize, complete	15
Restrictor, complete	17
Tightening torque	19
Dimensions mm (in.)	21

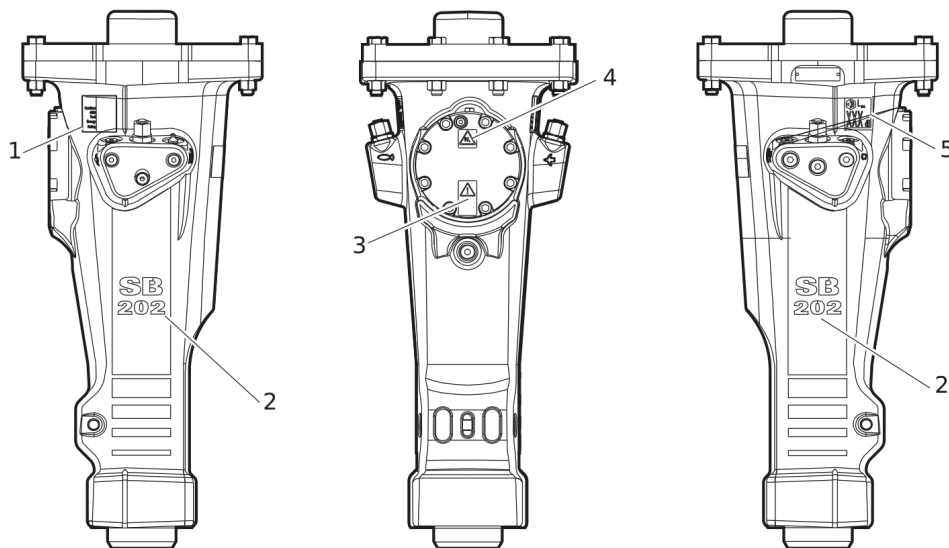
Options / accessories

Hydraulic hoses	22
Optional equipment	25
Working tools ClassicLine	27
Working tools ProLine	29

Annex

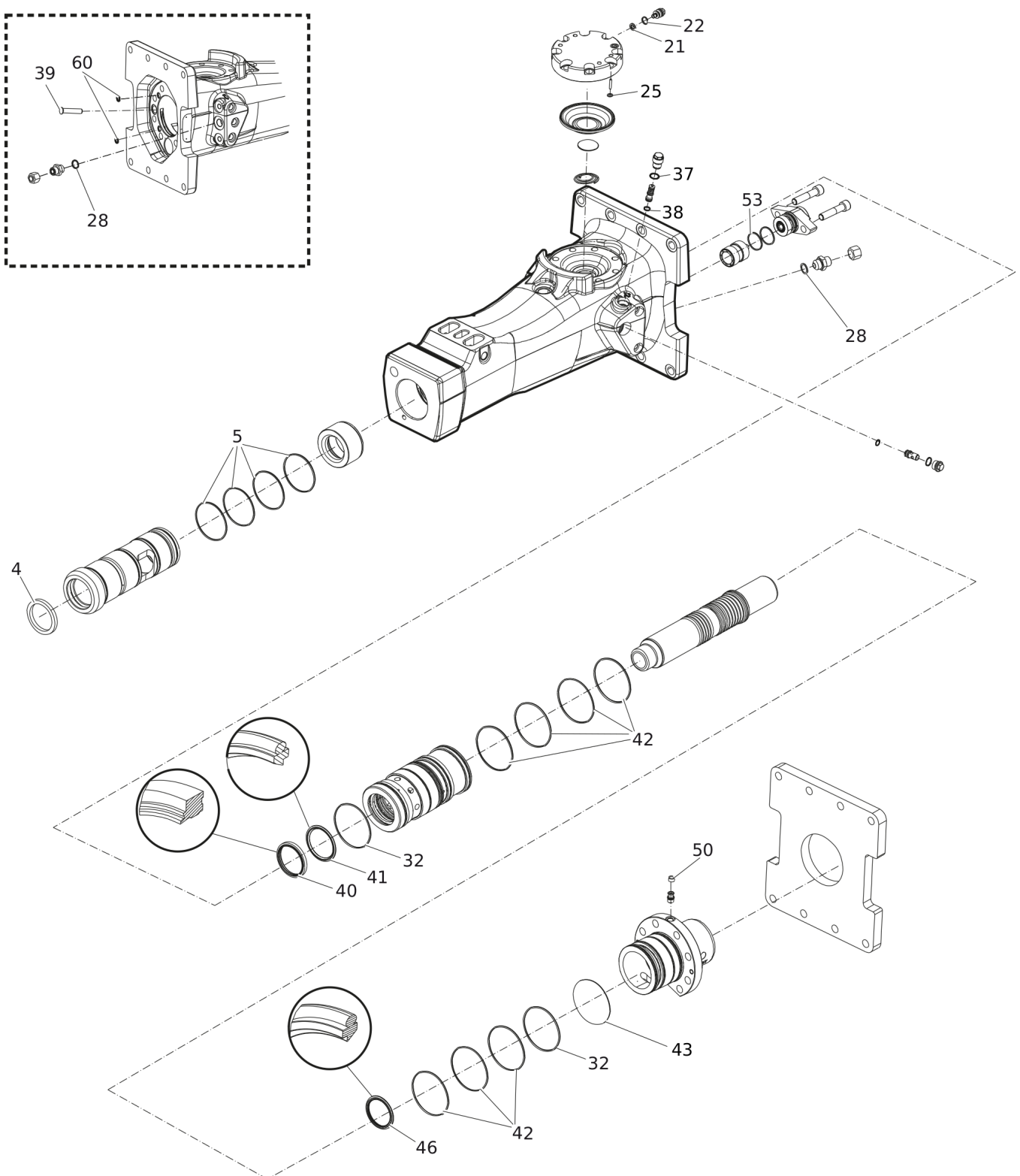
Environmental Product Compliance - REACH Declaration	31
--	----

Service, repair and wear part kits Label kit



Item	Part No.	Name	Qty	L
KIT	3315294390	LABEL KIT	1	
1		AEM SIGN	1	
2		PRODUCT LABEL	2	
3		SAFETY LABEL	1	
4		SAFETY LABEL	1	
5		SOUND POWER LABEL	1	

Service, repair and wear part kits Seal kit



Refer to the DocMine web page for most up-to-date information. The printed information might be outdated.

Fri Nov 10 10:47:18 UTC 2023

Item	Part No.	Name	Qty	L
KIT	3382070079	SEAL KIT	1	
4	3315356200	SCRAPER RING	1	
5	0663210498	O-RING	4	
21	3115329002	SEAL RING	1	
22	0663212000	O-RING	1	
25	0663211400	O-RING	1	
28	0664000003	SEAL RING	2	
32	0663990036	SEAL RING	2	
37	0663903201	O-RING	1	A
38	0663905401	O-RING	1	B
39	3315336700	PLUG	1	
40	0665909956	WIPER	1	
41	0665070130	PISTEN ROD SEAL	1	
42	0663210494	O-RING	7	
43	0663211516	O-RING	1	C
46	0665070129	PISTON ROD SEAL	1	
50	3315280800	VALVE RUBBER	1	
53	0663211444	O-RING	2	
60	0665090014	SEAL RING	2	

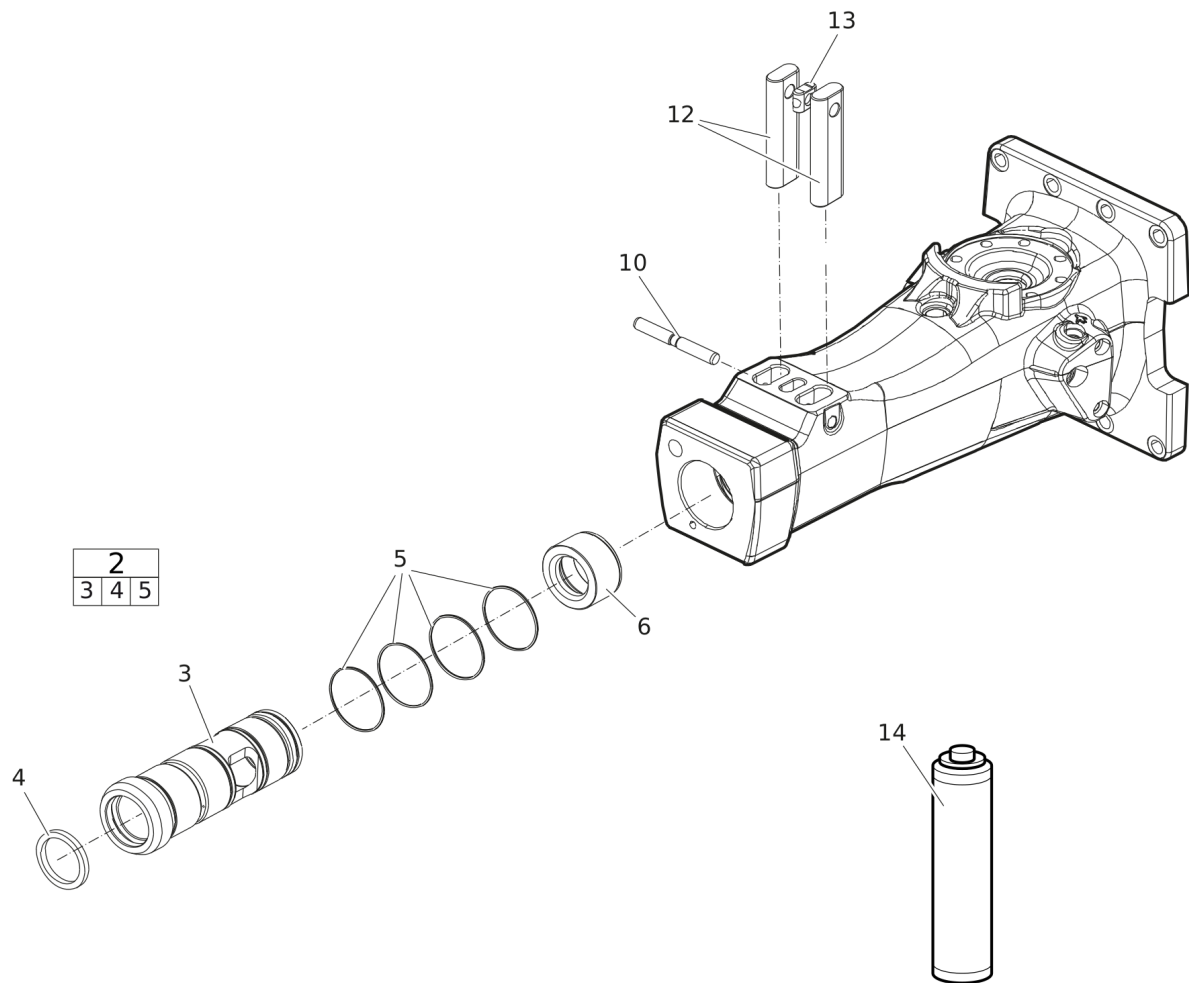
Comments for Page: Seal kit

(L)OCAL REMARKS

A | Ø 15.6 x 1.78 (Ø 0.61 x 0.07 in.)

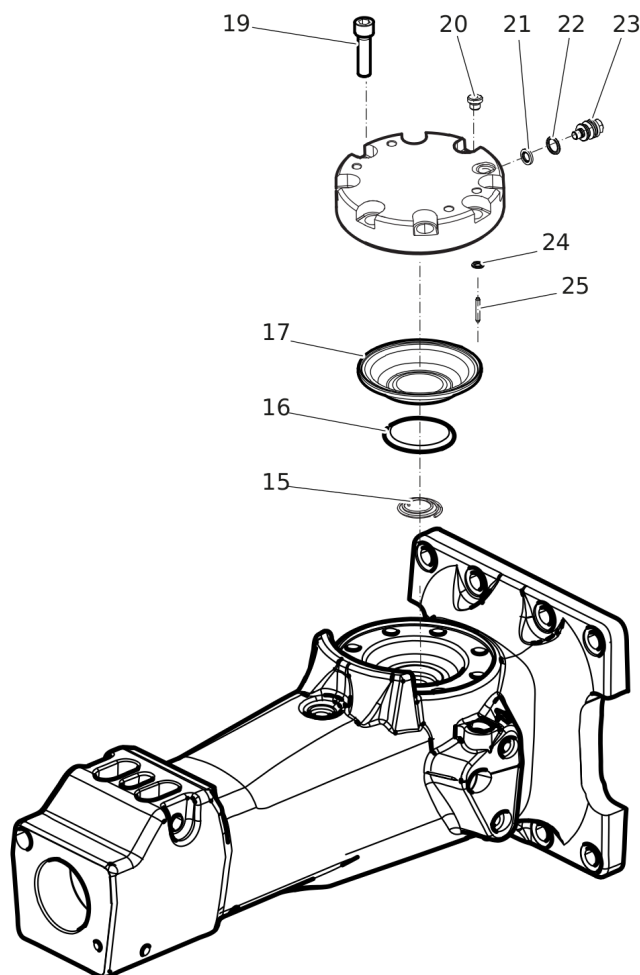
B | Ø 10.82 x 1.78 mm (Ø 0.43 x 0.07 in.) 90 shore

C | Ø 101.27 x 2.62 mm (Ø 3.99 x 0.10 in.)



Item	Part No.	Name	Qty	L
KIT	3315352145	LOWER HAMMER PART KIT	1	
2	3315354080	BUSHING STANDARD, complete	1	
3		BUSHING, Ø 90 mm (Ø 3.54 in.)	1	
4	3315356200	SCRAPER RING	1	
5	0663210498	O-RING	4	
6	3315277800	STOP RING	1	
10	3315135000	LOCK PIN	1	
12	3315134900	RETAINER BAR	2	
13	3315141900	LOCK BUFFER	1	
14		BIO CHISEL PASTE CARTRIDGE, 1 x 400 g (0.88 lbs)	1	

Service, repair and wear part kits Accumulator repair kit



Item	Part No.	Name	Qty	L
KIT	3382070078	ACCUMULATOR REPAIR KIT	1	
15	3315359600	COIL SPRING	1	
16	3315359500	DIAPHRAGM SUPPORT	1	
17	3315289000	DIAPHRAGM	1	
19	0211196534	HEX SOCK. SCREW	8	A
20	0686371805	PLUG	1	B
21	3115329002	SEAL RING	1	
22	0663212000	O-RING	1	
23	3315366000	VALVE	1	
24	0663211400	O-RING	1	
25	0101414000	PIN	1	

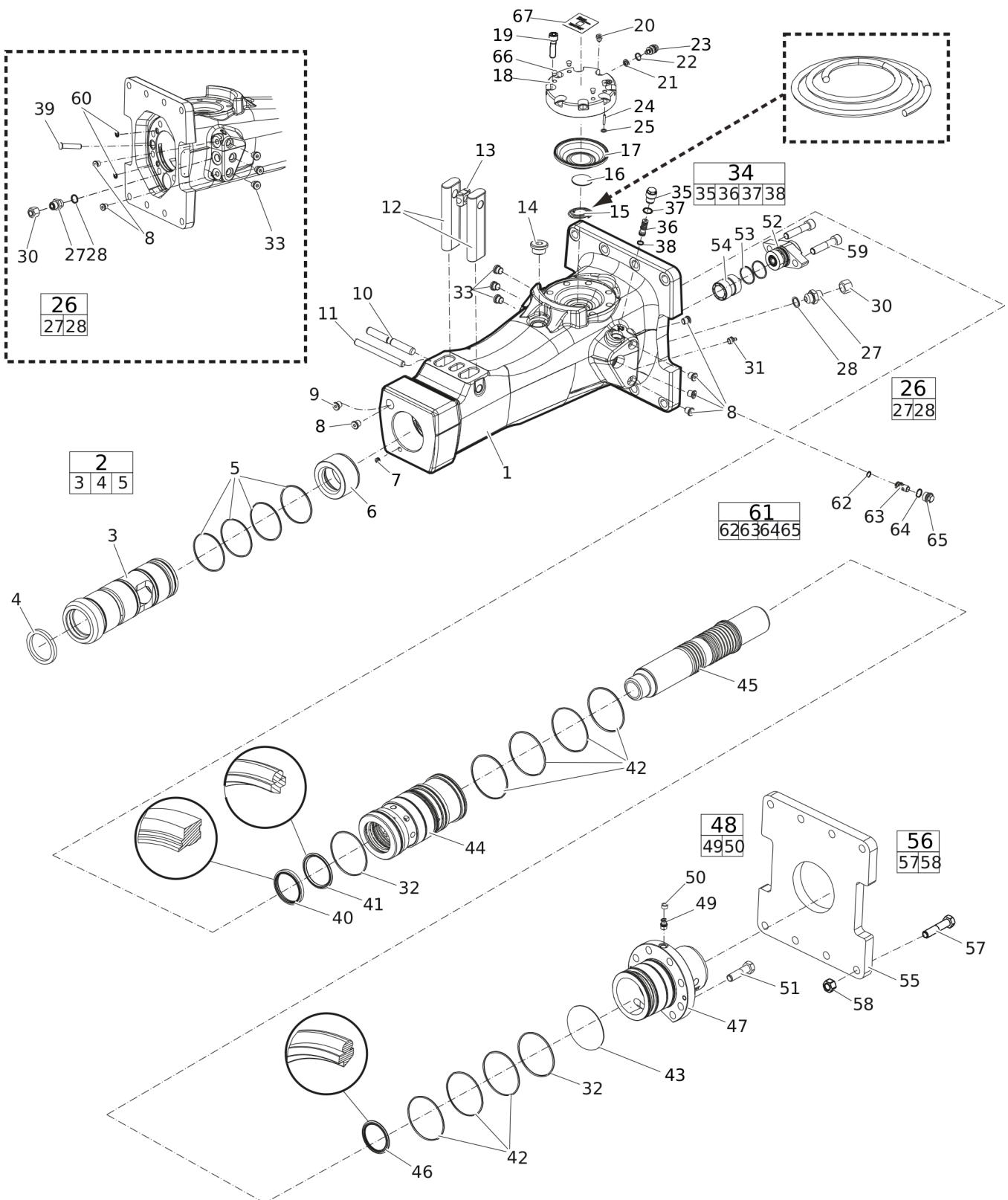
Comments for Page: Accumulator repair kit

(L)OCAL REMARKS

A | Screw with extra high fatigue strength.

B | VSTI R 1/8-ED

Mechanical Hydraulic breaker



Refer to the DocMine web page for most up-to-date information. The printed information might be outdated.

Fri Nov 10 10:47:21 UTC 2023

Item	Part No.	Name	Qty	L
1		BREAKER BODY	1	
2	3315354080	BUSHING STANDARD, complete	1	A
3		BUSHING, Ø 90 mm (Ø 3.54 in.)	1	
4	3315356200	SCRAPER RING	1	
5	0663210498	O-RING	4	
6	3315277800	STOP RING	1	
7	0686100009	PLUG	1	
8	0686644207	PLUG	6	
9	3315395200	WATER NOSSLE	1	
10	3315135000	LOCK PIN	1	
11	0108169127	SPRING PIN, option	1	
12	3315134900	RETAINER BAR	2	
13	3315141900	LOCK BUFFER	1	
14	0686371803	PLUG	1	
15	3315359600	COIL SPRING	1	
16	3315359500	DIAPHRAGM SUPPORT	1	
17	3315289000	DIAPHRAGM	1	
18	3315282410	ACCUMULATOR HOUSE	1	
19	0211196534	HEX SOCK. SCREW	8	
20	0686371805	PLUG	1	
21	3115329002	SEAL RING	1	
22	0663212000	O-RING	1	
23	3315366000	VALVE	1	
24	0101414000	PIN	1	
25	0663211400	O-RING	1	
26	0580001846	PIPE COUPLING	2	
27		NIPPLE	1	
28	0664000003	SEAL RING	1	
30	3361353486	CAP	2	
31	3360433774	GREASE NIPPLE	1	
32	0663990036	SEAL RING	2	
33	0686371801	PLUG	3	
34	3315335000	PRESSURE RELIEF VALVE, complete	1	B
35		VALVE PLUG	1	
36		PRESSURE RELIEF VALVE	1	
37	0663903201	O-RING	1	
38	0663905401	O-RING	1	

Refer to the DocMine web page for most up-to-date information. The printed information might be outdated.

Fri Nov 10 10:47:21 UTC 2023

Item	Part No.	Name	Qty	L
39	3315336700	PLUG	1	
40	0665909956	WIPER	1	
41	0665070130	PISTON ROD SEAL	1	
42	0663210494	O-RING	7	
43	0663211516	O-RING	1	
44	3315277420	LINER	1	
45	3315277300	PISTON	1	
46	0665070129	PISTON ROD SEAL	1	
47	3315293110	BACK HEAD	1	
48	3315244881	CHECK VALVE, complete	1	
49		CHECK VALVE	1	
50	3315280800	VALVE RUBBER	1	
51	0147148103	SCREW, HEX HEAD	8	
52	3315352020	VALVE COVER	1	
53	0663211444	O-RING	2	
54	3315277600	CONTROL VALVE	1	
55	3315295100	BASE PLATE	1	
56	3315296490	BOLT KIT	1	
57		SCREW M6 x 20 mm (0.79 in.) 8.8	8	
58		NUT, M16	8	
59	0211110349	SCREW, M14 x 65 mm (2.56 in.)	2	
60	0665090014	SEAL RING	2	
61	3315369460	RESTRICTOR, complete	1	
62	0663210421	O-RING	1	
63		RESTRICTOR, Ø 6.0 mm (Ø 0.24 in.)	1	
64	0663212141	O-RING	1	
65	3315369200	RESTRICTOR PLUG	1	
66	3315439145	PROTECTIVE PLUG HATCON	4	
67	3315439101	HATCON LABEL	1	

Comments for Page: Hydraulic breaker

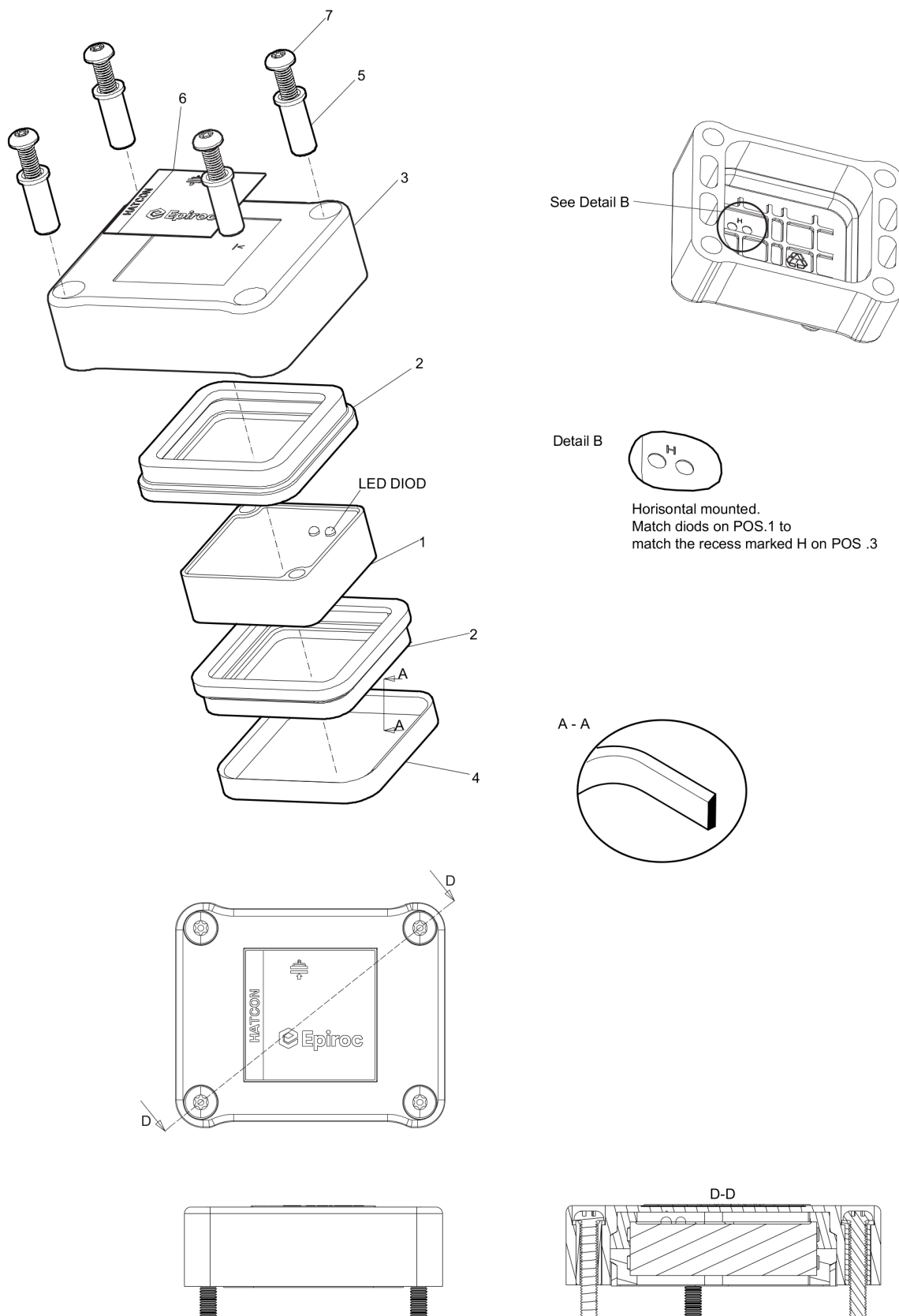
(L)OCAL REMARKS

A | For more bushings, see section "Bushing oversize, complete".

B | CAS No. see chapter "Environmental Product Compliance - REACH Declaration"

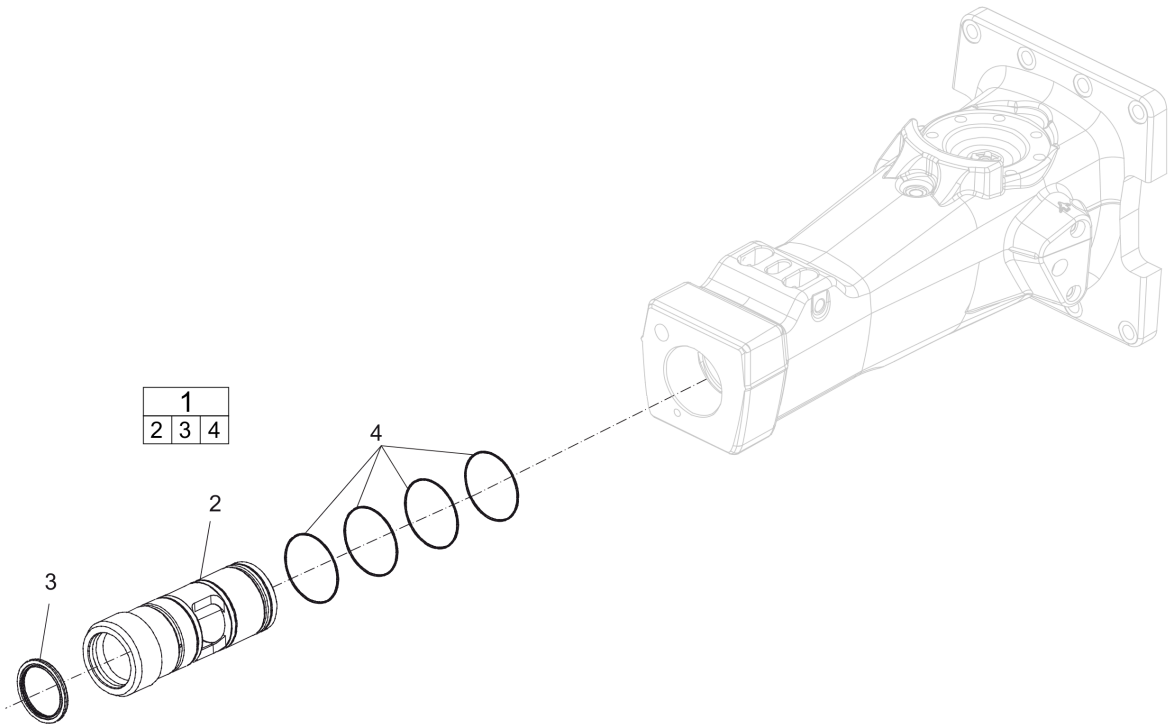
This page intentionally left blank

Mechanical HATCON (Horizontal)



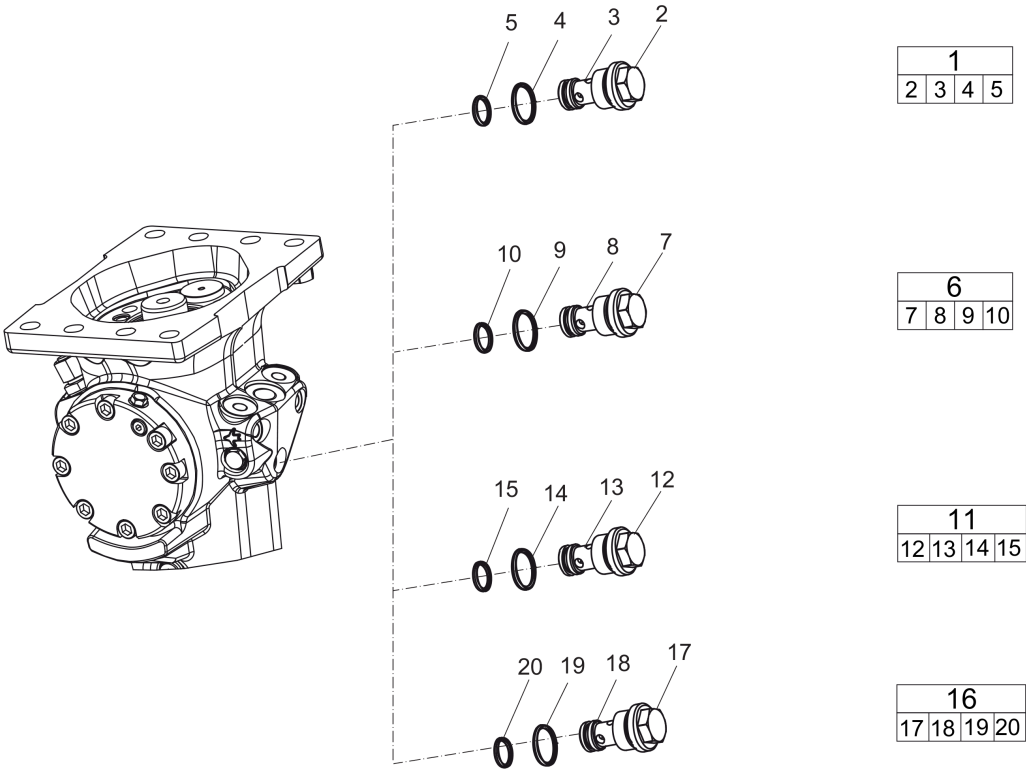
Item	Part No.	Name	Qty	L
1		TRACKING MODULE HATCON	1	
2	3315439130	DAMPER HATCON	2	
3	3315439110	HOUSING TYPE 1 HATCON	1	
4	3315439140	LOCK RING HATCON	1	
5	3315439120	SLEEVE HATCON	4	
6	3315439100	PRODUCT LABEL HATCON	1	
7	3315442600	SCREW HATCON	4	

Mechanical Bushing oversize, complete



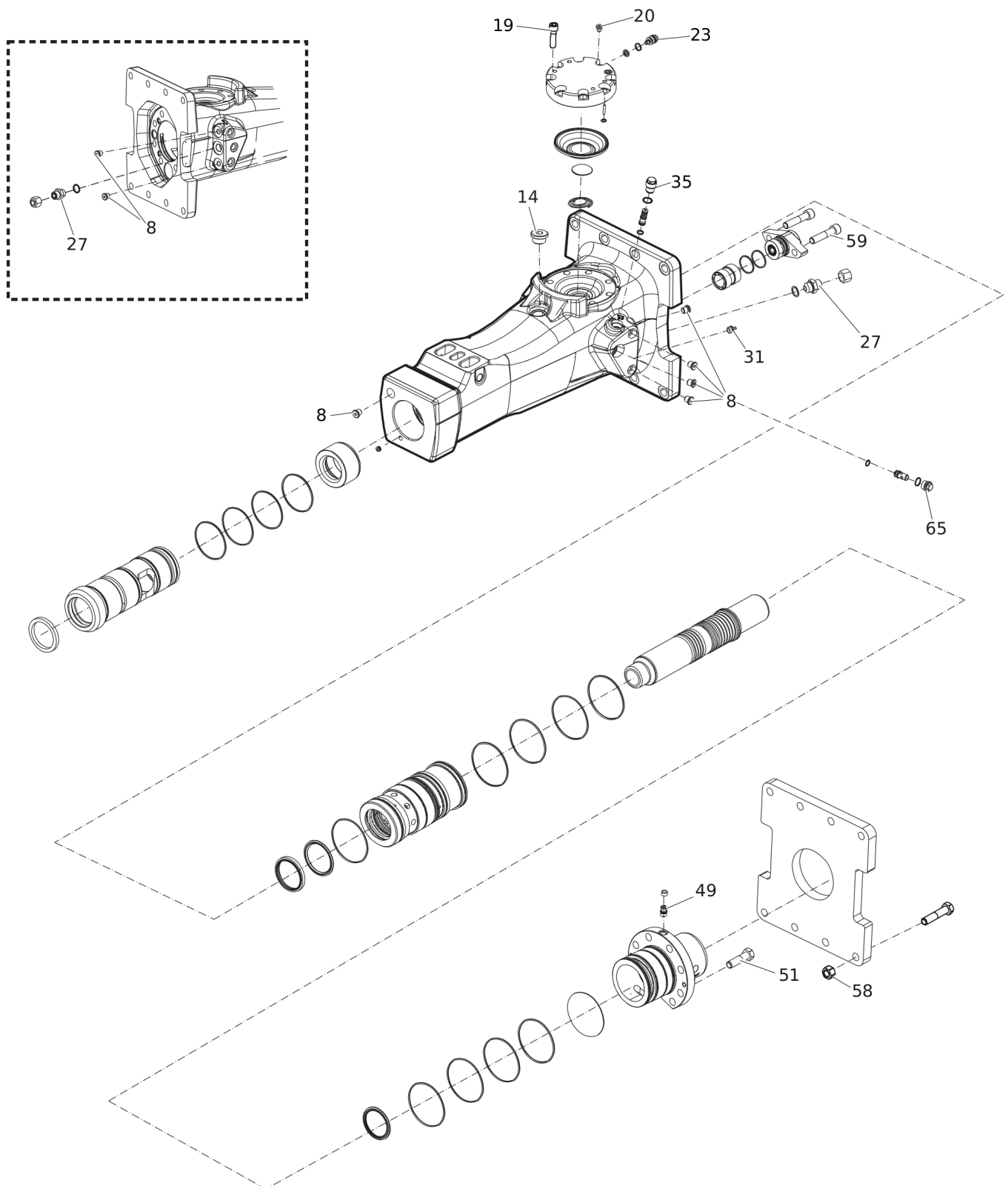
Item	Part No.	Name	Qty	L
1	3315277990	BUSHING OVERSIZE, complete	1	
2		BUSHING, Ø 91.5 mm (Ø 3.6 in.)	1	
3	3315282500	SCRAPER RING	1	
4	0663210498	O-RING	4	

Mechanical Restrictor, complete



Item	Part No.	Name	Qty	L
1	3315369460	RESTRICTOR, complete	1	
2	3315369200	RESTRICTOR PLUG	1	
3		RESTRICTOR, Ø 6.0 mm (Ø 0.24 in.)	1	
4	0663212141	O-RING	1	
5	0663210421	O-RING	1	
6	3315369454	RESTRICTOR, complete	1	
7	3315369200	RESTRICTOR PLUG	1	
8		RESTRICTOR, Ø 5.4 mm (Ø 0.21 in.)	1	
9	0663212141	O-RING	1	
10	0663210421	O-RING	1	
11	3315369450	RESTRICTOR, complete (optional)	1	
12	3315369200	RESTRICTOR PLUG	1	
13		RESTRICTOR SLEEVE, Ø 5.0 mm (Ø 0.20 in.)	1	
14	0663212141	O-RING	1	
15	0663210421	O-RING	1	
16	3315369445	RESTRICTOR, complete (optional)	1	
20	0663210421	O-RING	1	
19	0663212141	O-RING	1	
18		RESTRICTOR SLEEVE, Ø 4.5 mm (Ø 0.18 in.)	1	
17	3315369200	RESTRICTOR PLUG	1	

Mechanical Tightening torque



Refer to the DocMine web page for most up-to-date information. The printed information might be outdated.

Fri Nov 10 10:47:22 UTC 2023

Item	Part No.	Name	Qty	L
8		PLUG - 30 Nm (22 ft lbf)	-	A
14		HEXAGON SOCKET PLUG - 80 Nm (59 ft lbf)	-	A
19		HEXAGON SOCKET PLUG - 120 Nm (89 ft lbf)	-	B
20		PLUG - 20 Nm (15 ft lbf)	-	
23		VALVE - 27 Nm (20 ft lbf)	-	
27		NIPPLE - 120 Nm (89 ft lbf)	-	
31		GREASE NIPPLE - 30 Nm (22 ft lbf)	-	
35		PRESSURE RELIEF VALVE - 60 Nm (44 ft lbf)	-	
49		CHECK VALVE - 30 Nm (22 ft lbf)	-	A
51		HEXAGON HEAD SCREW M16 x 60 - 180 Nm (133 ft lbf)	-	B
58		NUT M 16 - 200 Nm (148 ft lbf)	-	B
59		SCREW M14 x 65 - 180 Nm (133 ft lbf)	-	
65		RESTRICTOR PLUG - 80 Nm (59 ft lbf)	-	

Comments for Page: Tightening torque

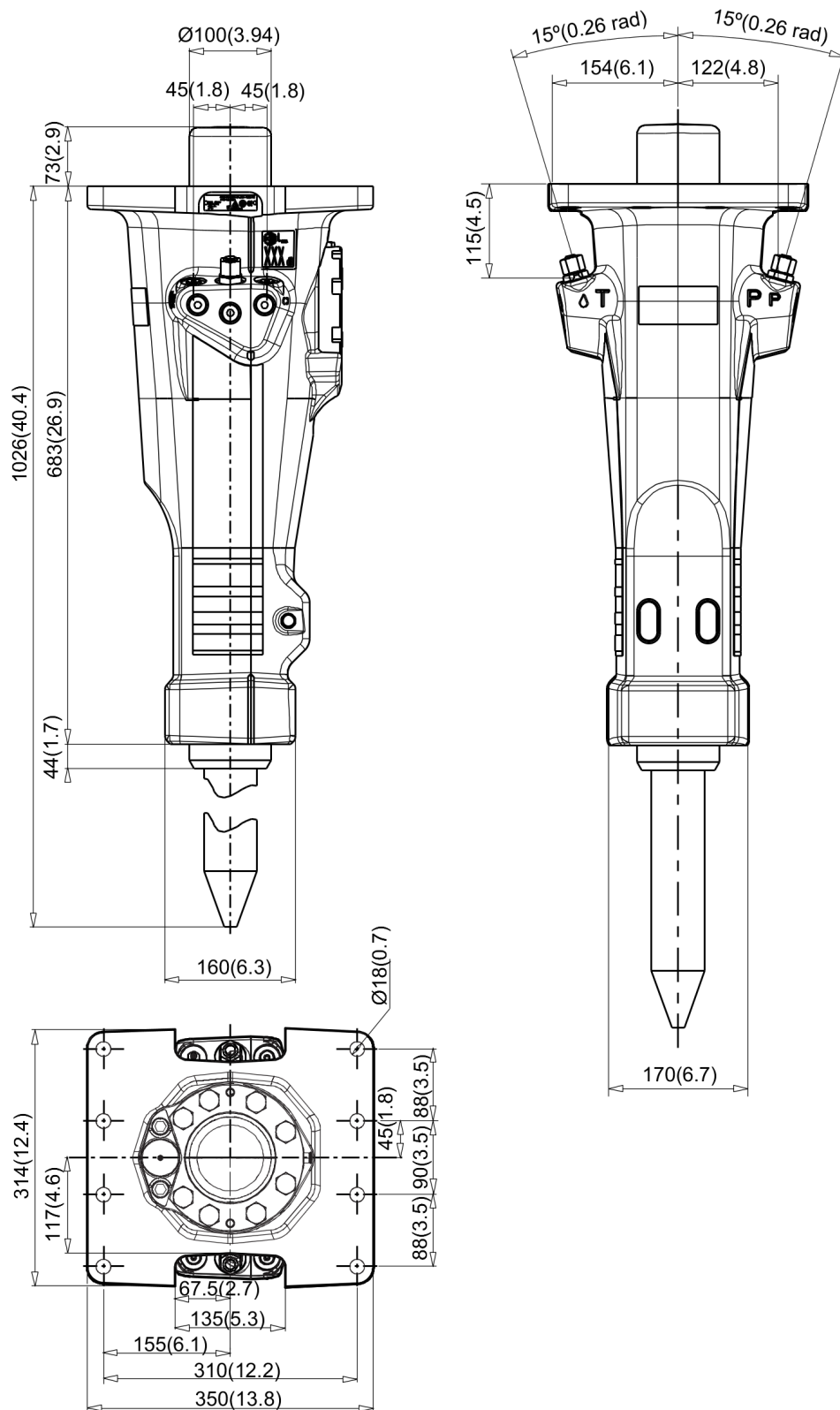
LOCTITE is a registered trademark of Henkel Corporation. 243 is a trademark of Henkel Corporation. Molycote is a registered trademark of Dow Corning Corporation.

(L)OCAL REMARKS

A | LOCTITE® 243™

B | Molycote®

Mechanical Dimensions mm (in.)

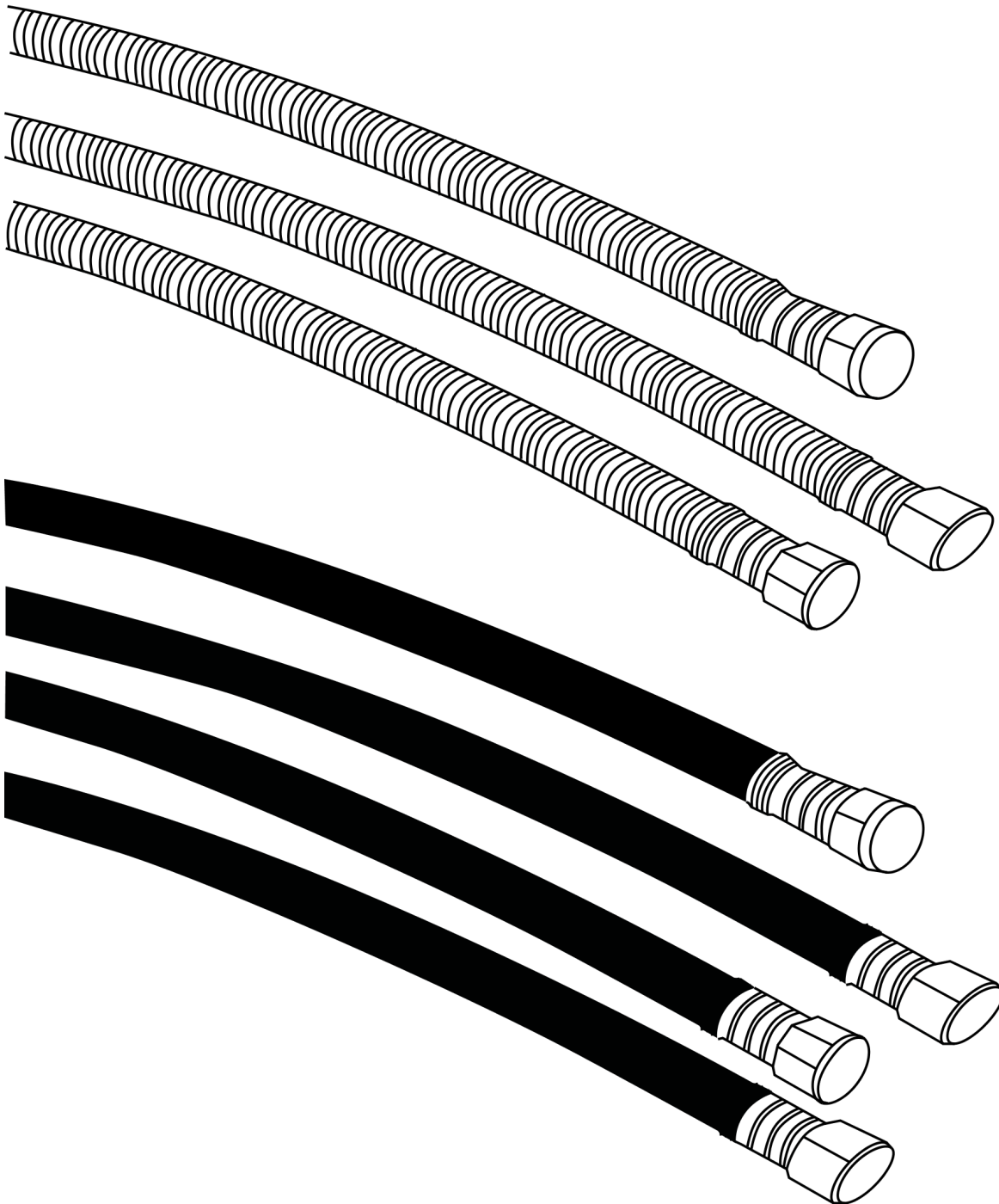


Refer to the DocMine web page for most up-to-date information. The printed information might be outdated.

Fri Nov 10 10:47:23 UTC 2023

This page intentionally left blank

Options / accessories Hydraulic hoses



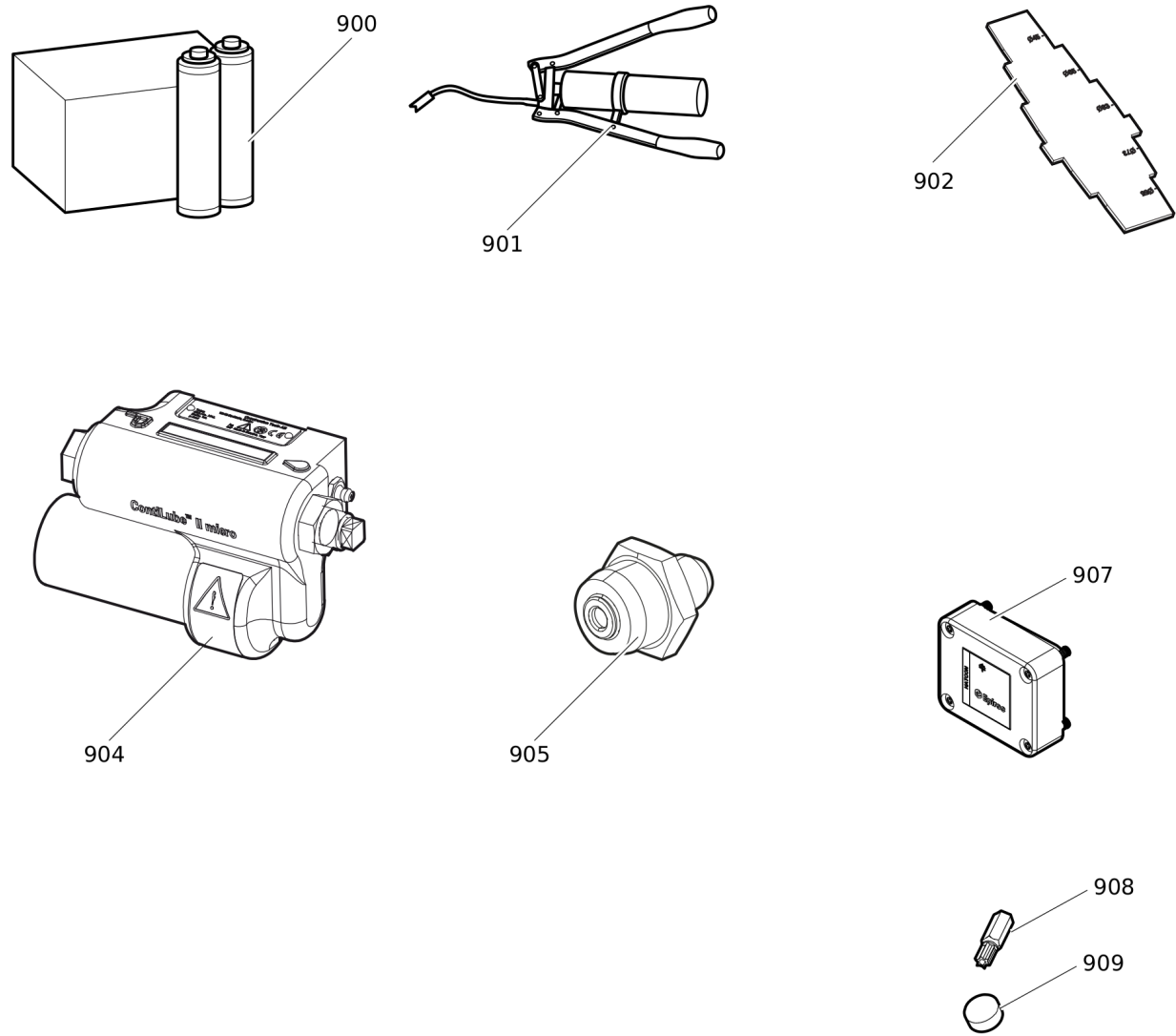
Item	Part No.	Name	Qty	L
	-	HEAVY DUTY CONNECTION HOSES	-	
-	3360995717	HYDRAULIC HOSE, both ends 18 L (M26 x 1.5) length 1500 mm (59 in.)	2	
-	3362235159	HYDRAULIC HOSE, both ends 18 L (M26 x 1.5) length 2000 mm (79 in.)	2	
-	3363115426	HYDRAULIC HOSE, both ends 18 L (M26x1.5) length 1750 mm (68 in.)	2	
-	3363083313	HYDRAULIC HOSE, both ends 18 L (M26 x 1.5) length 2400 mm (95 in.)	2	
	-	STANDARD CONNECTION HOSES	-	
-	3363491002	HYDRAULIC HOSE, both ends 18 L (M26x1.5) length 1500 mm (59 in.)	2	
-	3363115423	HYDRAULIC HOSE, both ends 18 L (M26x1.5) length 1750 mm (68 in.)	2	
-	3363115424	HYDRAULIC HOSE, both ends 18 L (M26x1.5) length 2000 mm (79 in.)	2	
-	3363115425	HYDRAULIC HOSE, both ends 18 L (M26x1.5) length 2400 mm (95 in.)	2	
-	3363098018	ADDITIONAL FITTING KIT	1	A

Comments for Page: Hydraulic hoses

(L)OCAL REMARKS

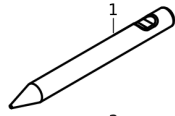
A | Needed to fit two hoses to the hydraulic breaker

Options / accessories Optional equipment

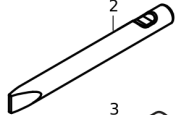


Item	Part No.	Name	Qty	L
900	3363122354	BIO CHISEL PASTE, 20 x 150 g (0.33 lbs)	1	
900	3363122355	BIO CHISEL PASTE CARTRIDGE FOR GREASE GUN, 12 x 400 g (0.88 lbs)	1	
-	3363122357	BIO CHISEL PASTE CONTAINER 15 kg (33 lbs)	1	
-	3363122358	BIO CHISEL PASTE CONTAINER 45 kg (99 lbs)	1	
901	0909107100	LUBRICAT.GUN	1	
902	3315353100	BUSHING WEAR CONTROLLER	1	
904	3315383190	CONTILUBE II MICRO	1	
905	3363094459	NIPPLE, for charging the accumulator	1	
-	3360920415	FILLING DEVICE, for accumulator	1	
-	3361329803	FILLING HOSE, for charging the accumulator	1	
907	3315442500	HATCON KIT 1 (3G)	1	
907	3315442520	HATCON KIT 1 (LTE)	1	
908	3315439105	SECURITY BIT HATCON	1	
909	3315439106	MAGNET HATCON	1	

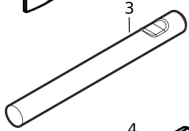
Options / accessories Working tools ClassicLine



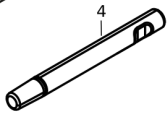
L=330 mm, LT=630 mm, Wt=13 kg
L=12.99 inch, LT=24.8 inch, Wt= 28.66 lb



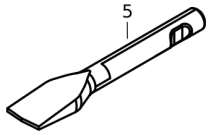
W= 65 mm, L=330 mm, LT=630 mm, Wt=14 kg
W=2.56 inch, L= 12.99 inch, LT=24.8 inch, Wt=30.86 lb



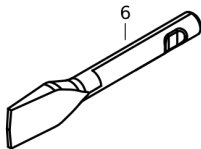
L=330 mm, LT=630 mm, Wt=15 kg
L=12.99 inch, LT=24.8 inch, Wt=33.07 lb



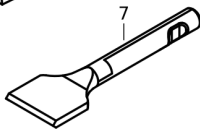
LT=630 mm, Wt=21 kg
LT=24.8 inch, Wt=46.3 lb



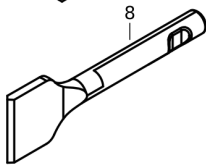
W=130 mm, L=350 mm, LT=650 mm, Wt=16 kg
W=5.12 inch, L=13.78 inch, LT=25.6 inch, Wt=35.27 lb



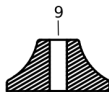
W=130 mm, L=350 mm, LT=650 mm, Wt=16kg
W=5.12 inch, L=13.78 inch, LT=25.6 inch, Wt=35.27 lb



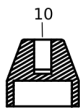
W=140 mm, L=350 mm, LT=650 mm, Wt=16 kg
W=5.51 inch, L=13.78 inch, LT=25.6 inch, Wt=35.27 lb



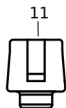
W=140 mm, L=350 mm, LT=650 mm, Wt=16 kg
W=5.51 inch, L=11.02 inch, LT=25.6 inch, Wt=35.27 lb



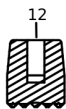
W= Ø300 mm, Wt=33 kg
W= Ø11.81 inch, Wt=1.3 lb



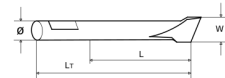
W=Ø150 mm, Wt=21 kg
W= Ø5.9 inch, Wt=0.83 lb



W=Ø100 mm, Wt=9 kg
W= Ø3.9 inch, Wt=0.35 lb



W=Ø130 , Wt=9.8 kg
W= Ø5.1 inch, Wt=0.38 lb

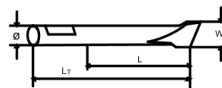
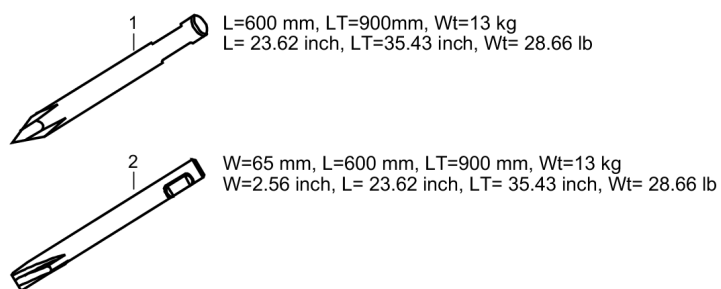


Refer to the DocMine web page for most up-to-date information. The printed information might be outdated.

Fri Nov 10 10:47:24 UTC 2023

Item	Part No.	Name	Qty	L
1	3083316206	MOIL POINT	1	
2	3083316105	CHISEL (cross)	1	
3	3083341105	BLUNT TOOL	1	
4	3315370205	SHAFT	1	
5	3083316300	WIDE CHISEL (cross)	1	
6	3083316700	WIDE CHISEL (parallel)	1	
7	3083340946	ASPHALT CUTTER (cross)	1	
8	3083340947	ASPHALT CUTTER (parallel)	1	
9	3315370900	TAMPING PAD (square)	1	
10	3315371700	POST DRIVER PAD (round)	1	
11	3315372300	PILE DRIVER PAD (round)	1	
12	3315373000	BUSHING PAD (round)	1	

Options / accessories Working tools ProLine



Item	Part No.	Name	Qty	L
1	3363120263	MOIL POINT (X-Profile)	1	
2	3363120264	CHISEL (X-profile)	1	

Annex Environmental Product Compliance - REACH Declaration

NO EXPLODED VIEW
AVAILABLE
FOR THIS BOM

Item	Part No.	Name	Qty	L
34	-	PRESSURE RELIEF VALVE, complete, Part No. 3315335000 - CAS No. 7439-92-1	-	

Comments for Page: Environmental Product Compliance - REACH Declaration

EU REACH Candidate List substances present in product listed above.

Any unauthorized use or copying of the contents or any part thereof is prohibited.
This applies in particular to trademarks, model denominations, part numbers, and drawings.