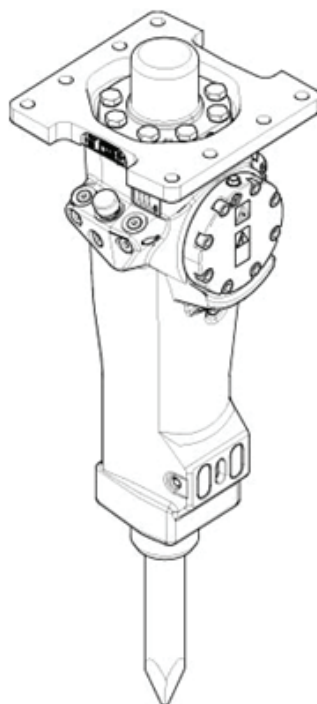


SB 152

Spare parts list Hydraulic breakers

SB 152 s/n BES130502 –



General information

This spare parts list applies to the following:

Part number	Description
8460030042	SB 152
8460030044	SB 152 HATCON
8460030047	SB 152 HATCON LTE

Use only authorized parts. Any damage or malfunction caused by the use of unauthorized parts is not covered by Warranty or Product Liability. Any unauthorized use or copying of the contents or any part thereof is prohibited. This applies in particular to trademarks, model denominations, part numbers, and drawings.

Instructions for use

This spare parts list contains no safety regulations and is merely intended to assist in the ordering of spare parts.

For information about operating, servicing, or repairing, the relevant Safety and operating instructions must be consulted at all costs.

Please observe the safety instructions listed in the relevant Safety and operating instructions!

Service, repair and wear part kits

Label kit	1
Seal kit	3
Lower hammer part kit	5
Accumulator repair kit	7

Mechanical

Hydraulic breaker	9
HATCON (Horizontal)	12
Optional parts - Bushing oversize, complete	15
Optional parts - Restrictor, complete	17
Tightening torque	19
Dimensions (mm)	21

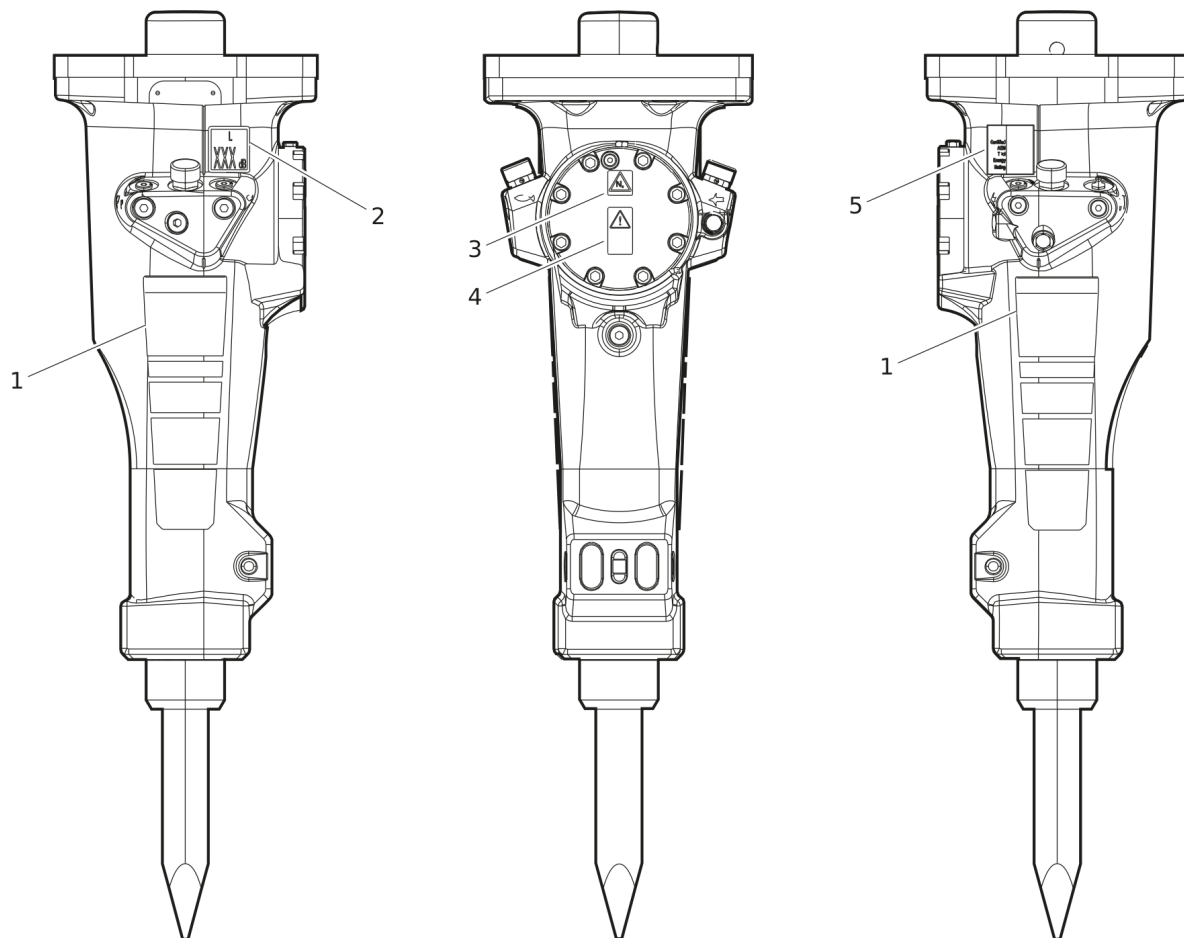
Options/accessories

Hydraulic hoses	22
Optional equipment	25
Working tools ClassicLine	27
Working tools ProLine	29

Annex

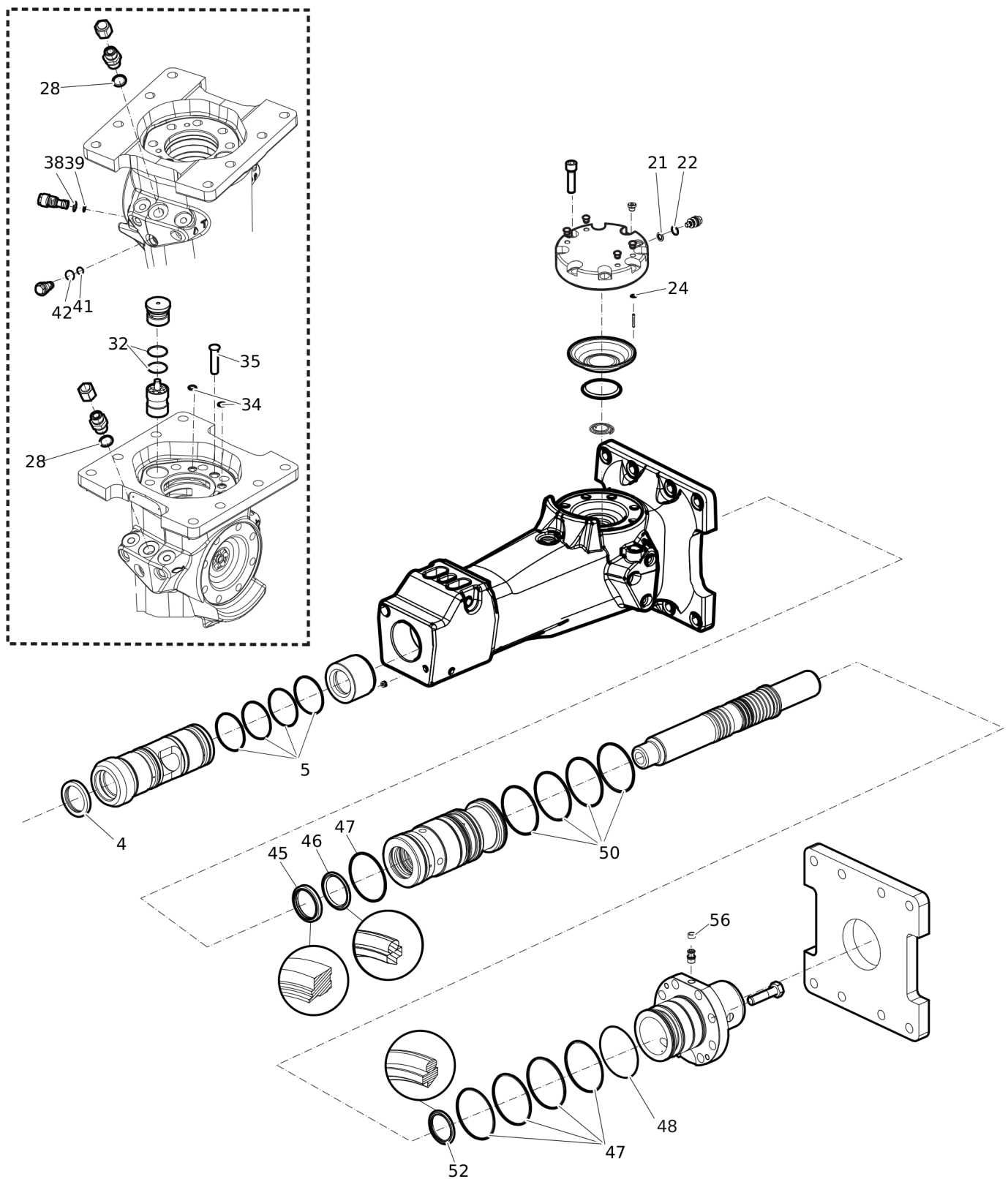
Environmental Product Compliance - REACH Declaration	31
--	----

Service, repair and wear part kits Label kit



Item	Part No.	Name	Qty	L
KIT	3315290591	LABEL KIT	1	
1		PRODUCT LABEL	2	
2		SOUND POWER LABEL	1	
3		SAFETY LABEL	1	
4		SAFETY LABEL	1	
5		AEM SIGN	1	

Service, repair and wear part kits Seal kit

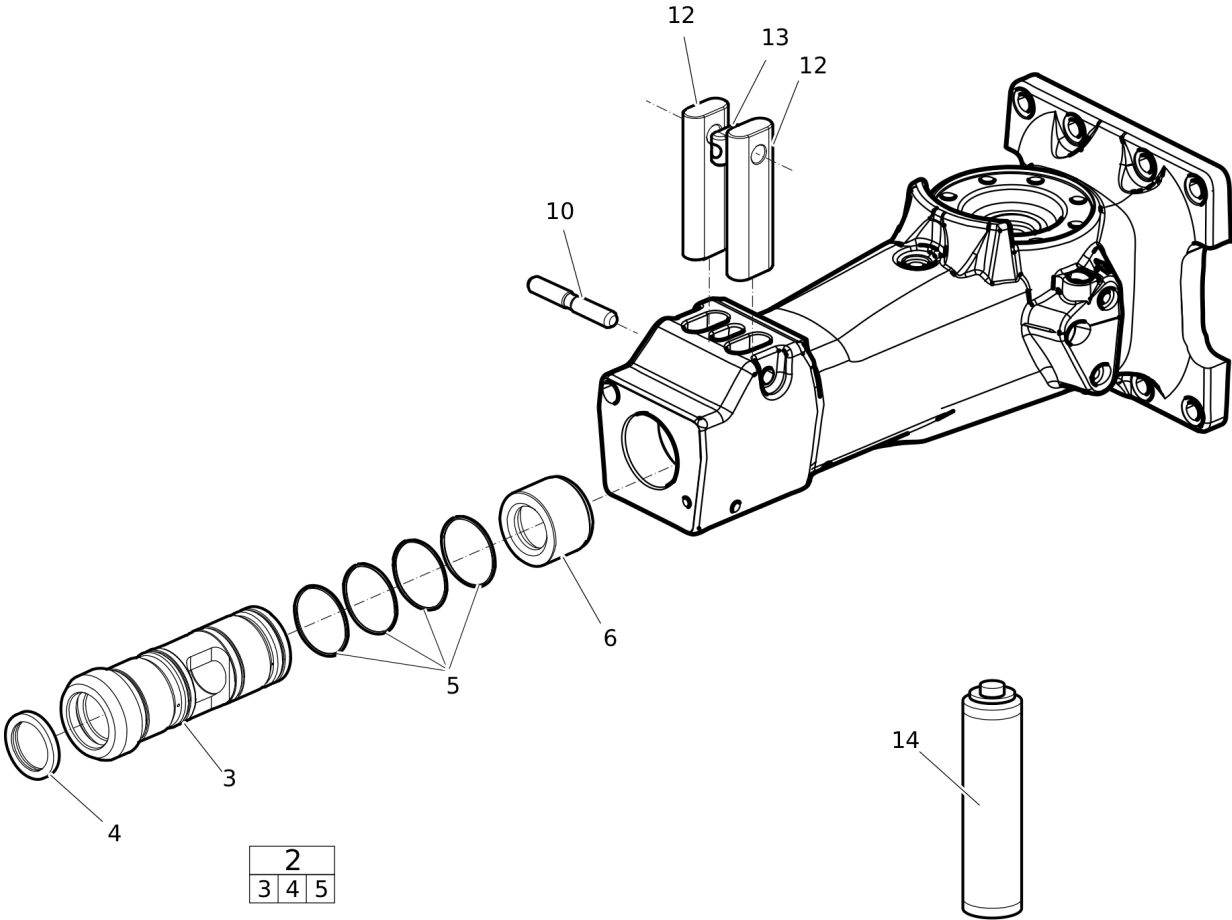


Refer to the DocMine web page for most up-to-date information. The printed information might be outdated.

Thu Jun 29 09:11:24 UTC 2023

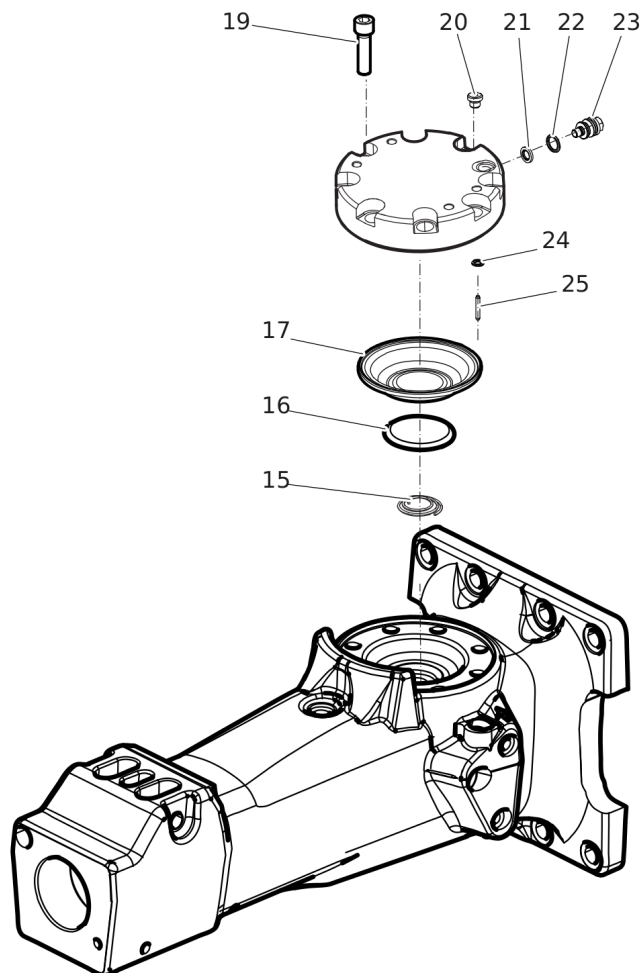
Item	Part No.	Name	Qty	L
KIT	3315290590	SEAL KIT	1	
4	3315356400	SCRAPER RING	1	
5	0663210289	O-RING	4	
21	3115329002	SEAL RING	1	
22	0663212000	O-RING	1	
24	0663211400	O-RING	1	
28	0664000003	SEAL RING	1	
32	0663211490	O-RING	2	
34	0665090014	SEAL RING	2	
35	3315305000	PLUG	1	
38	0663903201	O-RING	1	
39	0663905401	O-RING	1	
41	0663905401	O-RING	1	
42	0663903201	O-RING	1	
45	0665909954	WIPER	1	
46	0665070131	PISTON ROD SEAL	1	
47	0663211456	O-RING	5	
48	0663210631	O-RING	1	
50	0663210053	O-RING	4	
52	0665070132	PISTON ROD SEAL	1	
56	3315280800	VALVE RUBBER	1	

Service, repair and wear part kits Lower hammer part kit



Item	Part No.	Name	Qty	L
KIT	3382070206	LOWER HAMMER PART KIT	1	
2	3315353980	BUSHING STANDARD, complete	1	
3		BUSHING	1	
4	3315356400	SCRAPER RING	1	
5	0663210289	O-RING	4	
6	3315291800	STOP RING	1	
7	3315293000	LOCK PIN	1	
8	3315134900	RETAINER BAR	2	
9	3315141900	LOCK BUFFER	1	
10		BIO CHISEL PASTE CARTRIDGE, 1 x 400 g (0.88 lbs)	1	

Service, repair and wear part kits Accumulator repair kit



Item	Part No.	Name	Qty	L
KIT	3382070078	ACCUMULATOR REPAIR KIT	1	
15	3315359600	COIL SPRING	1	
16	3315359500	DIAPHRAGM SUPPORT	1	
17	3315289000	DIAPHRAGM	1	
19	0211196534	HEX SOCK. SCREW	8	A
20	0686371805	PLUG	1	B
21	3115329002	SEAL RING	1	
22	0663212000	O-RING	1	
23	3315366000	VALVE	1	
24	0663211400	O-RING	1	
25	0101414000	PIN	1	

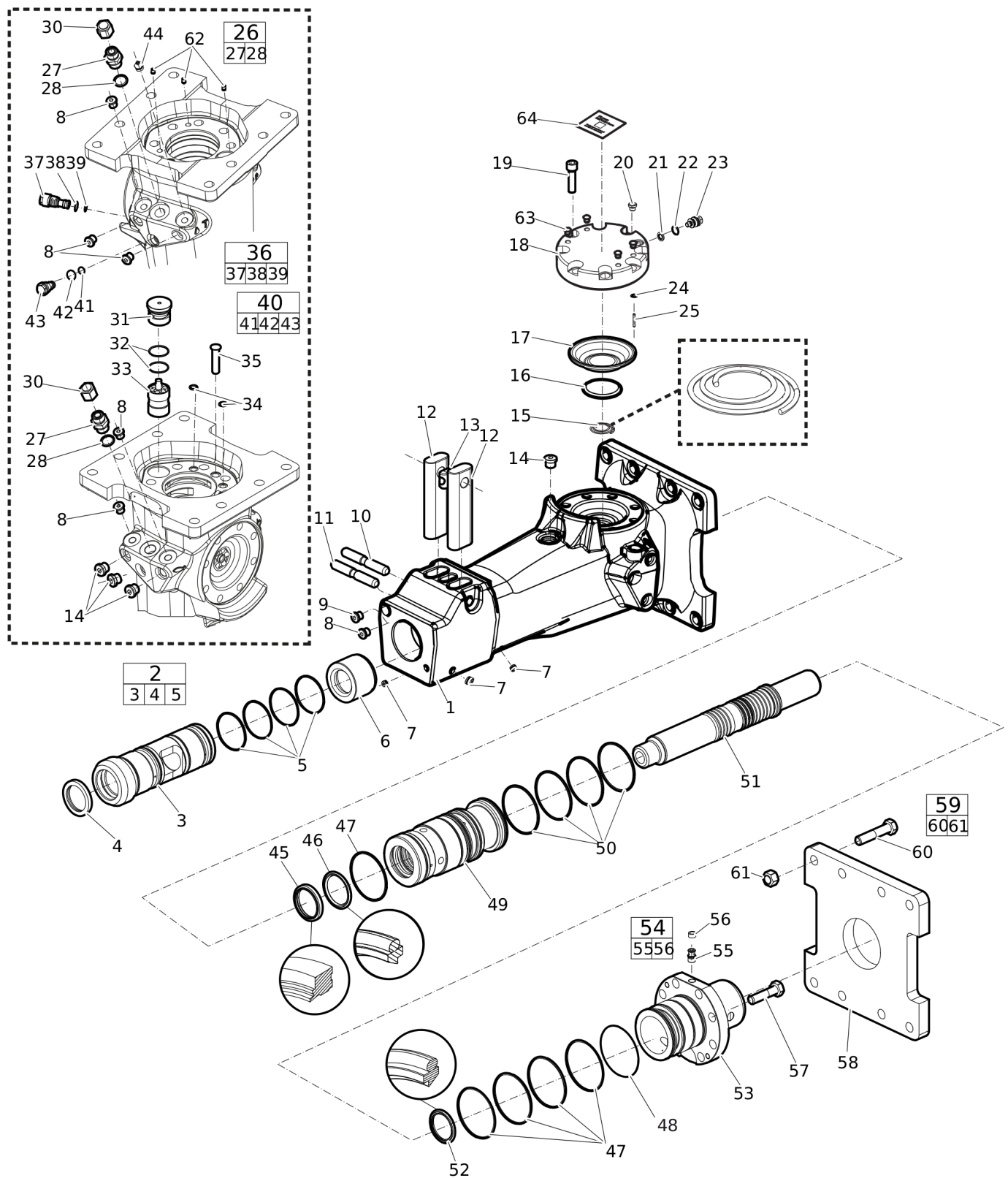
Comments for Page: Accumulator repair kit

(L)OCAL REMARKS

A | Screw with extra high fatigue strength.

B | VSTI R 1/8-ED

Mechanical Hydraulic breaker



Refer to the DocMine web page for most up-to-date information. The printed information might be outdated.

Thu Jun 29 09:11:28 UTC 2023

Item	Part No.	Name	Qty	L
1		BREAKER BODY	1	
2	3315353980	BUSHING STANDARD, complete	1	A
3	--	BUSHING, Ø 75 mm (Ø 2.95 in.)	1	
4	3315356400	SCRAPER RING	1	
5	0663210289	O-RING	4	
6	3315291800	STOP RING	1	
7	5750533851	PLUG	3	B
8	0686644207	PLUG	6	C
9	3315395200	WATER NOSSLE	1	
10	3315293000	LOCK PIN	1	
11	0108169126	SPRING PIN, option	1	
12	3315134900	RETAINER BAR	2	
13	3315141900	LOCK BUFFER	1	
14	0686371801	PLUG	4	D
15	3315359600	COIL SPRING	1	
16	3315359500	DIAPHRAGM SUPPORT	1	
17	3315289000	DIAPHRAGM	1	
18	3315282410	ACCUMULATOR HOUSE	1	
19	0211196534	HEX SOCK. SCREW	8	E
20	0686371805	PLUG	1	F
21	3115329002	SEAL RING	1	
22	0663212000	O-RING	1	
23	3315366000	VALVE	1	
24	0663211400	O-RING	1	
25	0101414000	PIN	1	
26	0580001846	PIPE COUPLING	1	G
27	--	NIPPLE	1	
28	0664000003	SEAL RING	2	
30	0570700019	CAP	2	
31	3315364000	VALVE COVER	1	
32	0663211490	O-RING	2	
33	3315291910	CONTROL VALVE	1	
34	0665090014	SEAL RING	2	
35	3315305000	PLUG	1	
36	3315335000	PRESSURE RELIEF VALVE, complete	1	H
37	--	PRESSURE RELIEF VALVE	1	
38	0663903201	O-RING	1	

Refer to the DocMine web page for most up-to-date information. The printed information might be outdated.

Thu Jun 29 09:11:28 UTC 2023

Item	Part No.	Name	Qty	L
39	0663905401	O-RING	1	
40	3315369551	RESTRICTOR STANDARD, complete	1	I
41	0663905401	O-RING	1	
42	0663903201	O-RING	1	
43	--	RESTRICTOR, Ø 5.5 mm (Ø 0.22 in.)	1	
44	3360433774	GREASE NIPPLE	1	J
45	0665909954	WIPER	1	
46	0665070131	PISTON ROD SEAL	1	
47	0663211456	O-RING	5	
48	0663210631	O-RING	1	
49	3315291300	LINER	1	
50	0663210053	O-RING	4	
51	3315291700	PISTON	1	
52	0665070132	PISTON ROD SEAL	1	
53	3315293900	BACK HEAD	1	
54	3315244881	CHECK VALVE, complete	1	
55		CHECK VALVE	1	
56	3315280800	VALVE RUBBER	1	
57	3315431201	HEXAGON BOLT	8	
58	3315304300	BASE PLATE with through borings	1	
59	3315296490	BOLT KIT	1	
60		SCREW	8	
61		NUT	8	
62	3315442601	PLUG	1	B
63	3315439145	PROTECTIVE PLUG HATCON	4	
64		HATCON LABEL	1	

Comments for Page: Hydraulic breaker

A | For more bushings, see section "Bushing oversize, complete".

B | Ø 10 mm (Ø 0.39 in.)

C | VSTI R 1/4 - ED

D | VSTI R 3/8 - ED

E | Screw with extra high fatigue strength.

F | VSTI R 1/8 - ED

G | There are two "Nipple, complete" on the machine.

H | CAS No. see chapter "Environmental Product Compliance - REACH Declaration"

I | Formore restrictors, see section "Restrictor, complete".

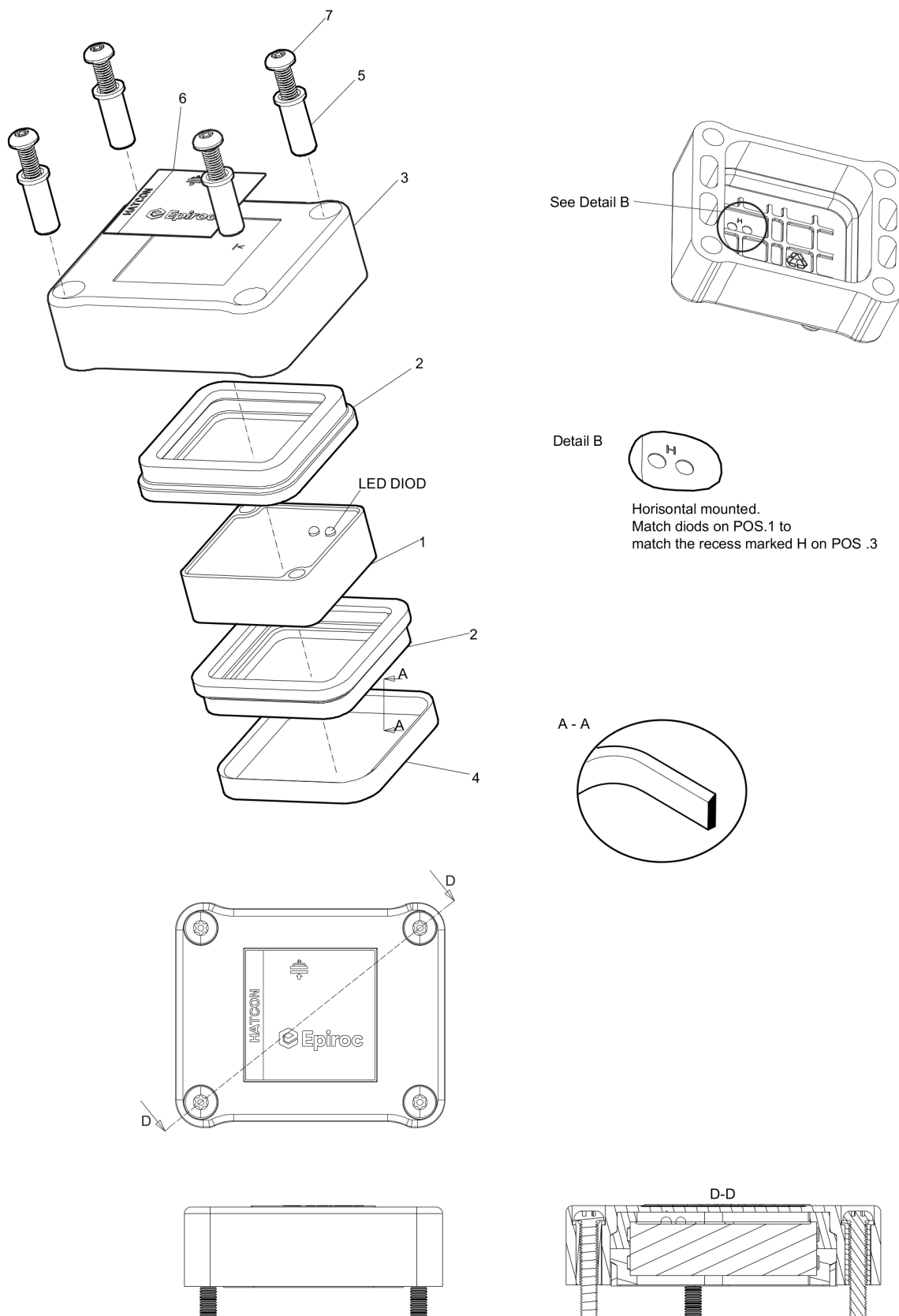
J | ISO 7-R 1/4

Refer to the DocMine web page for most up-to-date information. The printed information might be outdated.

Thu Jun 29 09:11:30 UTC 2023

This page intentionally left blank

Mechanical HATCON (Horizontal)

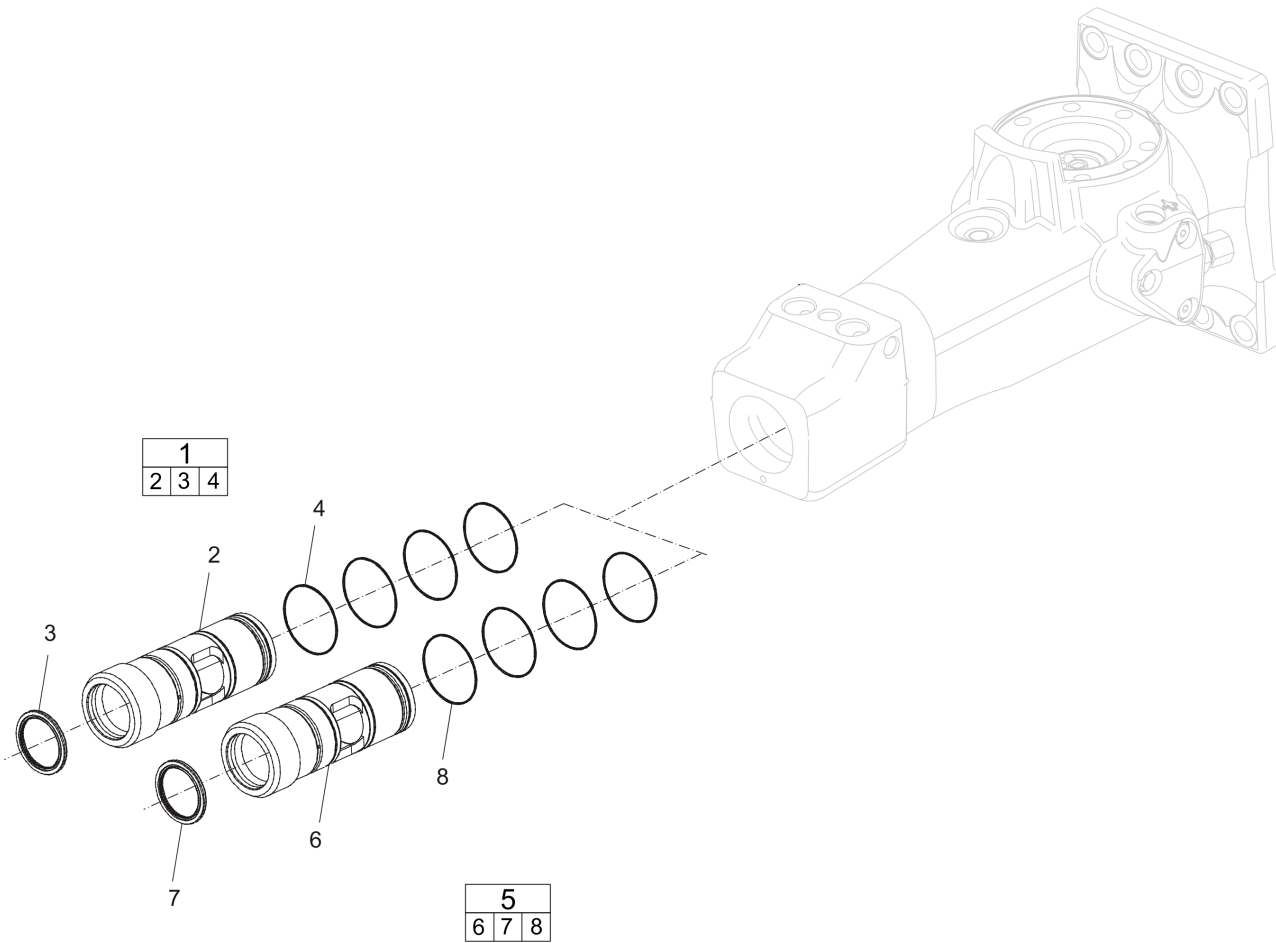


Refer to the DocMine web page for most up-to-date information. The printed information might be outdated.

Thu Jun 29 09:11:30 UTC 2023

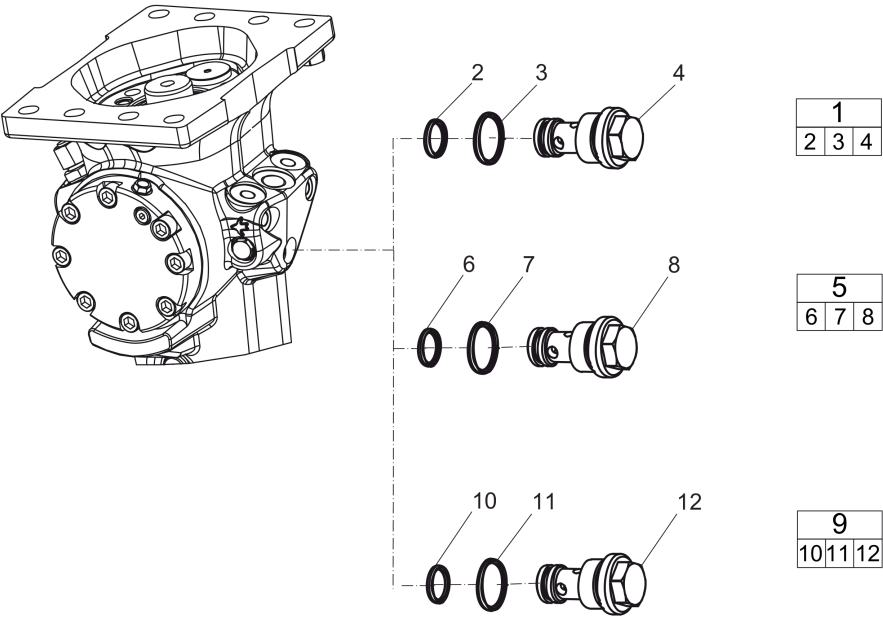
Item	Part No.	Name	Qty	L
1		TRACKING MODULE HATCON	1	
2	3315439130	DAMPER HATCON	2	
3	3315439110	HOUSING TYPE 1 HATCON	1	
4	3315439140	LOCK RING HATCON	1	
5	3315439120	SLEEVE HATCON	4	
6	3315439100	PRODUCT LABEL HATCON	1	
7	3315442600	SCREW HATCON	4	

Mechanical Optional parts - Bushing oversize, complete



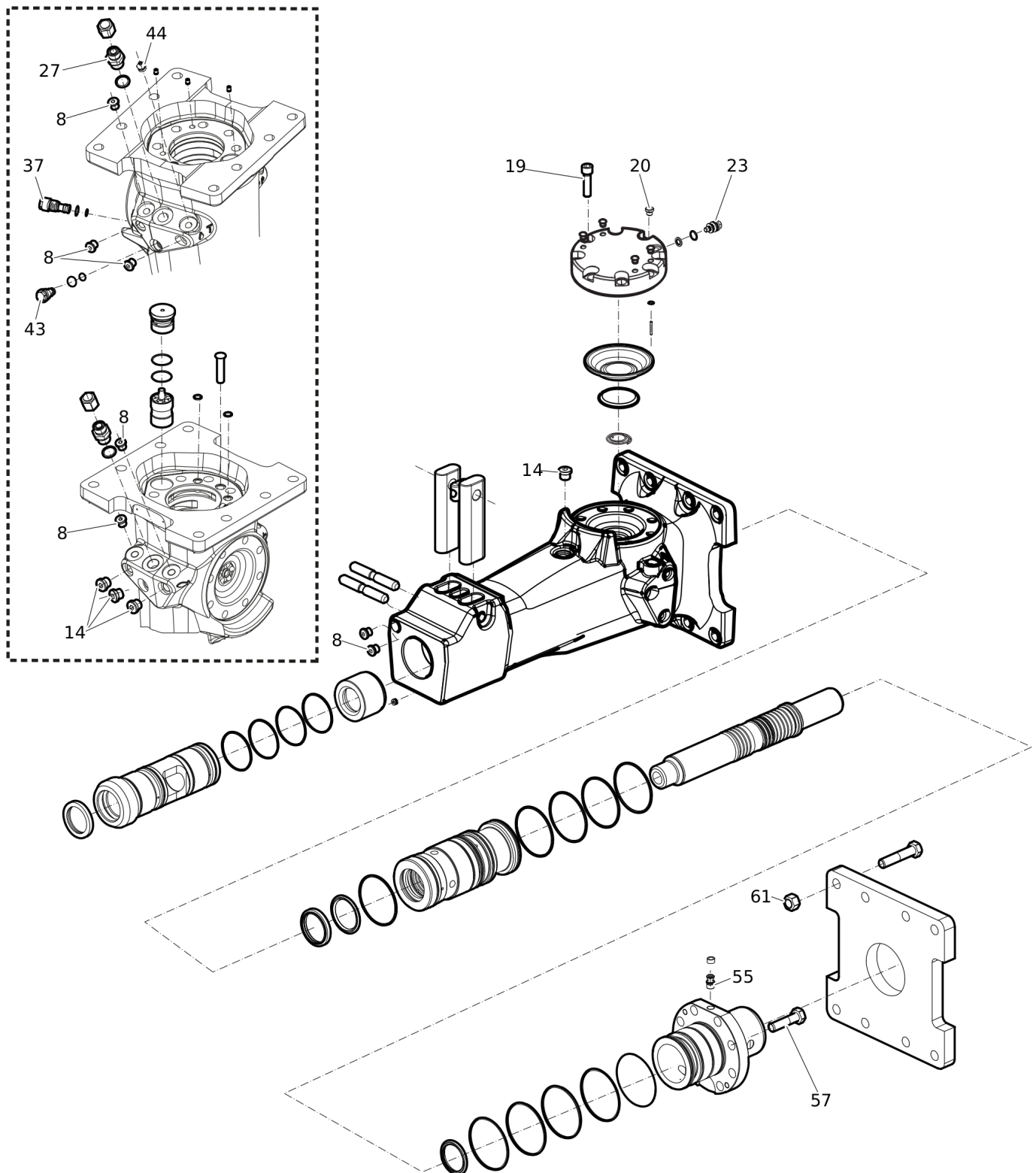
Item	Part No.	Name	Qty	L
1	3315353960	BUSHING OVERSIZE, complete	1	
2	--	BUSHING, Ø 76.5 mm (Ø 3.01 in.)	1	
3	3315356400	SCRAPER RING	1	
4	0663210612	O RING	4	
5	3315353963	BUSHING OVERSIZE, complete	1	
6	--	BUSHING, Ø 78 mm (Ø 3.07 in.)	1	
7	3315356400	SCRAPER RING	1	
8	0663210612	O RING	4	

Mechanical Optional parts - Restrictor, complete



Item	Part No.	Name	Qty	L
1	3315369535	RESTRICTOR, complete	1	
2	0663905401	O-RING	1	
3	0663903201	O-RING	1	
4		RESTRICTOR, Ø 4.5 mm (Ø 0.18 in.)	1	
5	3315369540	RESTRICTOR, complete	1	
6	0663905401	O-RING	1	
7	0663903201	O-RING	1	
8		RESTRICTOR, Ø 4.0 mm (Ø 0.16 in.)	1	
9	3315369545	RESTRICTOR, complete	1	
10	0663905401	O-RING	1	
11	0663903201	O-RING	1	
12		RESTRICTOR, Ø 5.5 mm (Ø 0.22 in.)	1	

Mechanical Tightening torque



Refer to the DocMine web page for most up-to-date information. The printed information might be outdated.

Thu Jun 29 09:11:32 UTC 2023

Item	Part No.	Name	Qty	L
8	-	HEXAGON SOCKET PLUG - 30 Nm (22 ft lbf)	-	A
14	-	HEXAGON SOCKET PLUG - 80 Nm (59 ft lbf)	-	A
19	-	HEXAGON SOCKET PLUG - 120 Nm (89 ft lbf)	-	B
20	-	HEXAGON SOCKET PLUG - 20 Nm (15 ft lbf)	-	
23		VALVE - 27 Nm (20 ft lbf)	-	
27		NIPPLE - 120 Nm (89 ft lbf)	-	
37	-	PRESSURE RELIEF VALVE - 60 Nm (44 ft lbf)	-	
43	-	RESTRICTOR - 80 Nm (59 ft lbf)	-	
44		GREASE NIPPLE - 30 Nm (22 ft lbf)	-	
55	-	CHECK VALVE - 30 Nm (22 ft lbf)	-	A
57	-	HEXAGON HEAD SCREW - 180 Nm (133 ft lbf)	-	B
61	-	NUT - 200 Nm (148 ft lbf)	-	

Comments for Page: Tightening torque

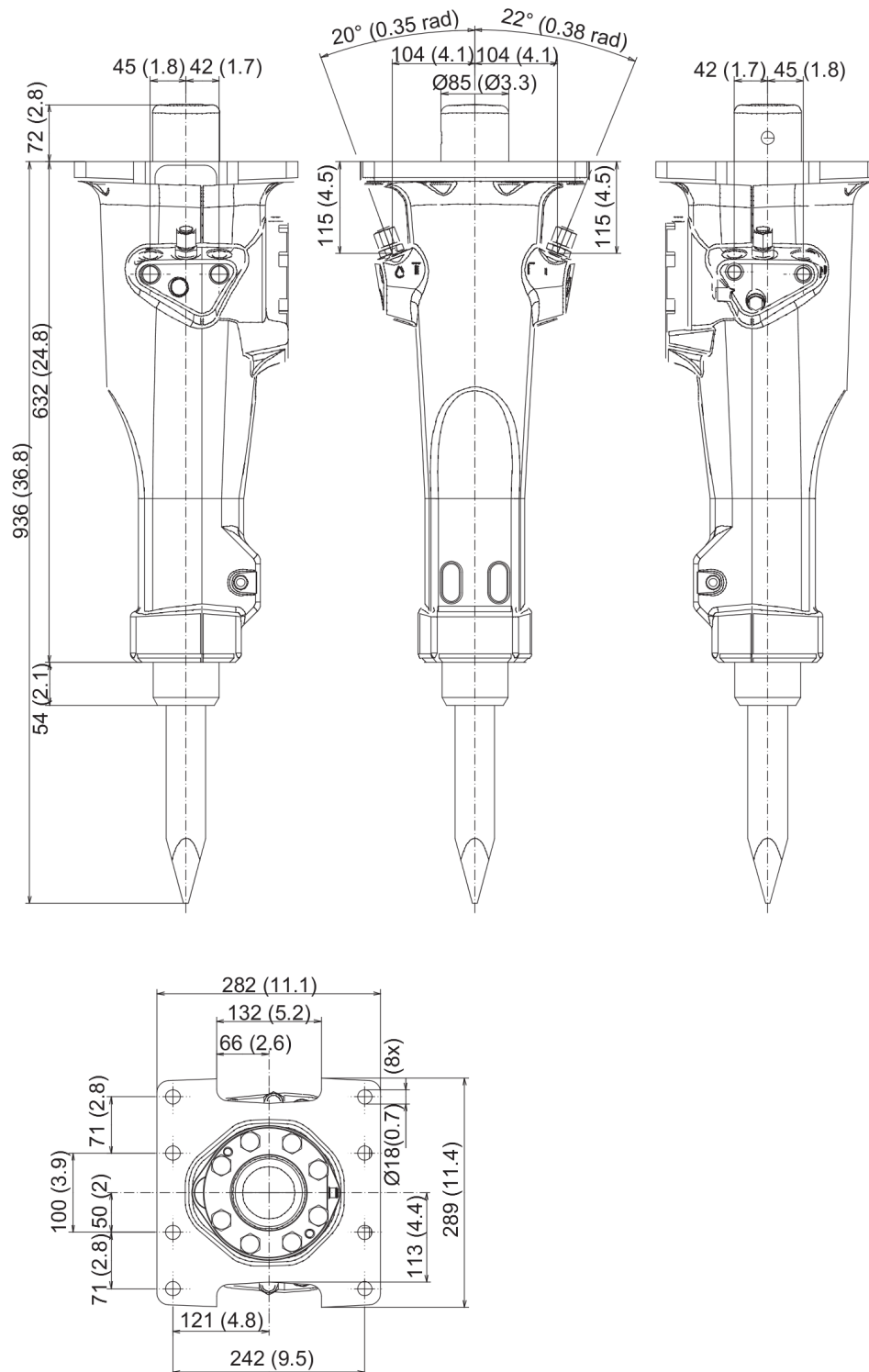
LOCTITE is a registered trademark of Henkel Corporation. 243 is a trademark of Henkel Corporation. Molycote is a registered trademark of Dow Corning Corporation.

(L)OCAL REMARKS

A | LOCTITE® 243™

B | Molycote

Mechanical Dimensions (mm)

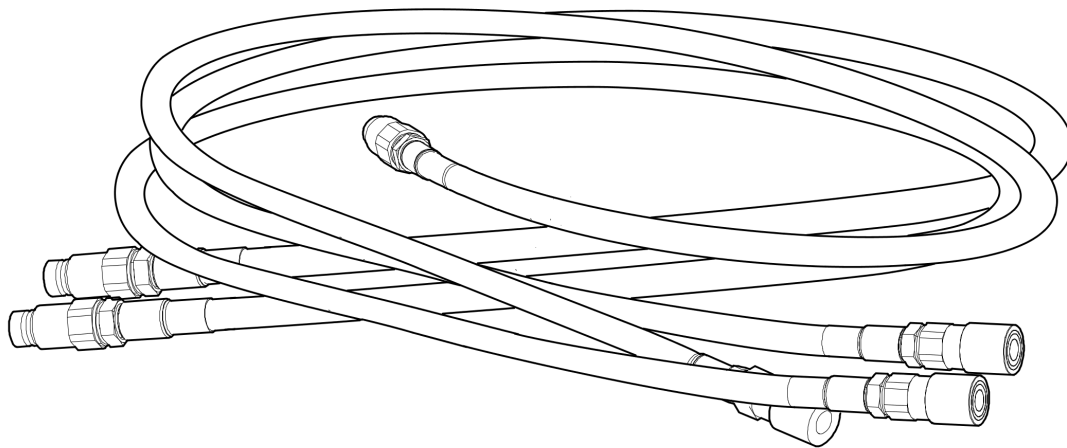


Refer to the DocMine web page for most up-to-date information. The printed information might be outdated.

Thu Jun 29 09:11:32 UTC 2023

This page intentionally left blank

Options/accessories Hydraulic hoses



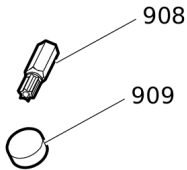
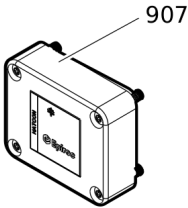
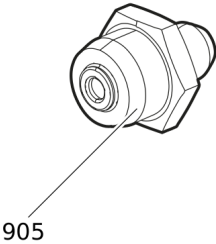
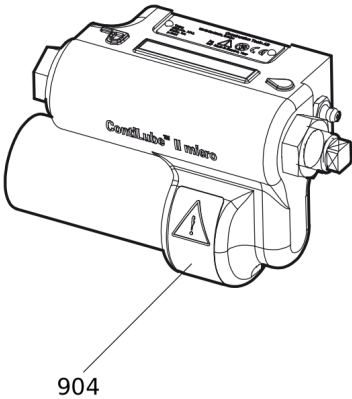
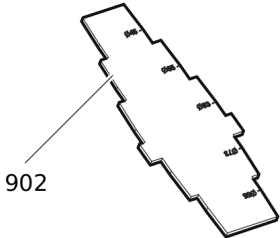
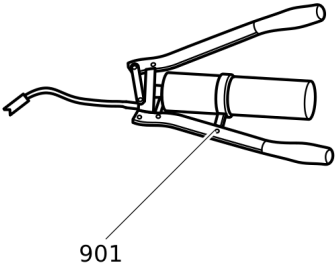
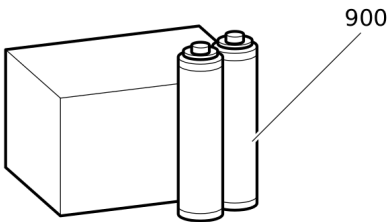
Item	Part No.	Name	Qty	L
-	3360995717	HYDRAULIC HOSE, both ends 18 L (M26 x 1.5) length 1500 mm (59 in.)	2	
-	3362235159	HYDRAULIC HOSE, both ends 18 L (M26 x 1.5) length 2000 mm (79 in.)	2	
-	3363083313	HYDRAULIC HOSE, both ends 18 L (M26 x 1.5) length 2400 mm (95 in.)	2	
-	3363098018	ADDITIONAL FITTING KIT	1	A

Comments for Page: Hydraulic hoses

(L)OCAL REMARKS

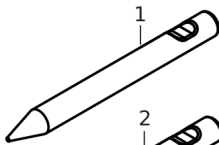
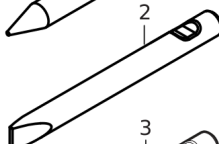
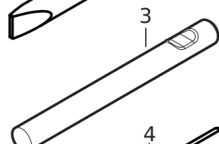
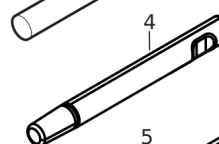
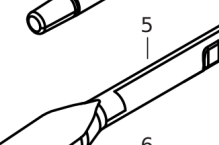
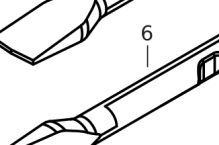

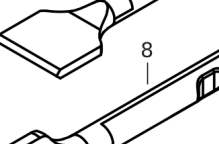
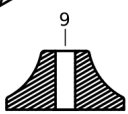
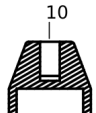
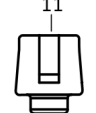
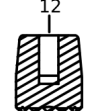
A | Needed to fit two hoses to the hydraulic breaker

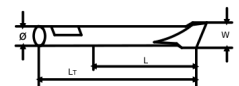
Options/accessories Optional equipment



Item	Part No.	Name	Qty	L
900	3363122354	BIO CHISEL PASTE, 20 x 150 g (0.33 lbs)	1	
900	3363122355	BIO CHISEL PASTE CARTRIDGE FOR GREASE GUN, 12 x 400 g (0.88 lbs)	1	
-	3363122357	BIO CHISEL PASTE CONTAINER 15 kg (33 lbs)	1	
-	3363122358	BIO CHISEL PASTE CONTAINER 45 kg (99 lbs)	1	
901	0909107100	LUBRICAT.GUN	1	
902	3315353100	BUSHING WEAR CONTROLLER	1	
904	3315383190	CONTILUBE II MICRO	1	
905	3363094459	NIPPLE, for charging the accumulator	1	
-	3360920415	FILLING DEVICE, for accumulator	1	
-	3361329803	FILLING HOSE, for charging the accumulator	1	
907	3315442500	HATCON KIT 1 (3G)	1	
907	3315442520	HATCON KIT 1 (LTE)	1	
908	3315439105	SECURITY BIT HATCON	1	
909	3315439106	MAGNET HATCON	1	

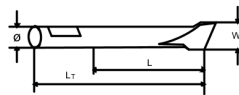
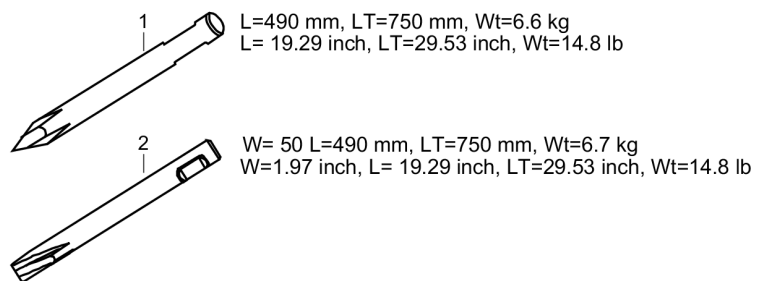
Options/accessories Working tools ClassicLine

	L=280 mm, LT=540 mm, Wt=6.7 kg L= 11.02 nch, LT=21.26 inch, Wt=14.8 lb
	W= 50 mm, L=280 mm, LT=540 mm, Wt=6,9kg W=1.97inch, L= 11.02 inch, LT=21.26 inch, Wt=14.8 lb
	W=50mm L=280 mm, LT=540 mm, Wt=9.3 kg W= 1.97 inch, L=11.02 inch, LT=21.26 inch, Wt=14.8 lb
	LT=540 mm, Wt=6.8kg LT=21.26 inch, Wt=15.0 lb
	W=110 mm, L=220 mm, LT=480 mm, Wt=7,2 kg W=4.33 inch, L=8.66 inch, LT=18.9 inch, Wt=15.9 lb
	W=110 mm, L=220 mm, LT=480 mm, Wt=7.2 kg W=4.33 inch, L=8.66 inch, LT=18.9 inch, Wt=15.9 lb
	W=120 mm, L=230 mm, LT=490 mm, Wt=6.4 kg W=4.72 inch, L=9.06 inch, LT=19.26 inch, Wt=14.1 lb
	W=120 mm, L=230 mm, LT=490 mm, Wt=6,4 kg W=4.72 inch, L=9.06 inch, LT=19.26 inch, Wt=14.1 lb
	W= Ø200 mm, Wt=15 kg W=Ø7.87 inch, Wt=33.1 lb
	W=Ø100 mm, Wt=8.5 kg W=Ø3.94 inch, Wt=18.7 lb
	W=Ø50 mm, Wt=3.3 kg W=Ø1.97 inch, Wt=7.3 lb
	W=Ø90 mm, Wt=4.1 kg W=Ø3.54 inch, Wt=9.0 lb



Item	Part No.	Name	Qty	L
1	3083342413	MOIL POINT	1	
2	3083342415	CHISEL (cross)	1	
3	3083342414	BLUNT TOOL	1	
4	3315370101	SHAFT	1	
5	3083317100	WIDE CHISEL	1	
6	3083317200	WIDE CHISEL indexed 90°	1	
7	3083317300	ASPHALT CUTTER	1	
8	3083317400	ASPHALT CUTTER indexed 90°	1	
9	3315370600	TAMPING PAD (square)	1	
10	3315371400	POST DRIVER PAD (round)	1	
11	3315372100	PILE DRIVER PAD (round)	1	
12	3315372800	BUSHING PAD (round)	1	

Options/accessories Working tools ProLine



Item	Part No.	Name	Qty	L
1	3363120261	MOIL POINT (X-profile)	1	
2	3363120262	CHISEL (X-profile)	1	

Annex Environmental Product Compliance - REACH Declaration

NO EXPLODED VIEW
AVAILABLE
FOR THIS BOM

Item	Part No.	Name	Qty	L
36	-	PRESSURE RELIEF VALVE, complete, Part No. 3315335000 - CAS No. 7439-92-1	-	

Comments for Page: Environmental Product Compliance - REACH Declaration

EU REACH Candidate List substances present in product listed above.

Any unauthorized use or copying of the contents or any part thereof is prohibited.
This applies in particular to trademarks, model denominations, part numbers, and drawings.